



5 Fabas Street, Box 100, La Broquerie, Manitoba R0A 0W0  
p: 1.204.424.5359 f: 1.204.424.5177 www.hylife.com

April 12, 2023  
File: 111440368

**Attention: Siobhan Burland Ross**

Director (Acting), Environmental Approvals Branch  
Manitoba Environment and Climate  
14 Fultz Boulevard  
Winnipeg, MB R3Y 0L6

Dear Director,

**Reference: NOA Request – Licence 2870 RRR R3 Innovations Inc./Town of Neepawa IWWTF  
Wastewater Transfer, Neepawa, MB**

In accordance with Section 14(1) of *The Environment Act*, R3 Innovations Inc. and the Town of Neepawa are jointly submitting a notice of alteration request for a transfer of wastewater from the Springhill Industrial Wastewater Treatment Facility (SH IWWTF) to Cell #1 at the Town of Neepawa (the Town) municipal wastewater treatment facility.

The R3 IWWTF is jointly owned by R3 Innovations Inc. (R3II) and the Town. An upset in the treatment process at the R3 IWWTF was detected on March 27, 2023 that resulted in the need divert wastewater to the nearby Springhill IWWTF (SH IWWTF). The diversion was communicated to Manitoba Environment and Climate (MEC) per the terms of Environment Act Licence 2870 RRR for the first day of the diversion on March 28, 2023. Based on current information, R3II does not anticipate being able to rectify the process upset and restore normal operations within the available storage capacity at the SH IWWTF while maintaining production at the HyLife pork processing facility. R3II is therefore requesting approval to transfer wastewater stored in the SH IWWTF to the Town of Neepawa's municipal wastewater treatment facility via a temporary overland pump and transfer line system (the Project) while the R3 IWWTF treatment process upset is investigated and restored to normal operations. R3II seeks to transfer approximately 40,000-50,000 m<sup>3</sup> of wastewater from the SH IWWTF to cell #1 at the Town Municipal Lagoon Facility in a manner similar to that approved by Manitoba Conservation and Climate on December 10, 2021.

R3II and the Town are seeking an expedited approval to proceed with the Project to address the difficulty of managing partially treated wastewater effluent from the R3 IWWTF while maintaining production and employment at the HyLife Foods pork processing plant.

This letter documents the proposed wastewater transfer, the potential resultant environmental effects and planned mitigation measures.

**LAND OWNERSHIP AND PROPERTY RIGHTS**

The Project Site (PS) comprises the lands occupied by the existing R3 IWWTF, the Town of Neepawa Municipal Lagoon Facility, and the transfer line and related equipment from the R3 IWWTF outfall, across R3II lands and a portion of the Neepawa golf course, to cell #1 of the municipal facility. The subject properties and transfer line route are located north of PTH 16 on the east side of the Town of Neepawa.



5 Fabas Street, Box 100, La Broquerie, Manitoba R0A 0W0  
p: 1.204.424.5359 f: 1.204.424.5177 www.hylife.com

April 12, 2023

Page 2 of 11

**Reference: R3 Innovations Inc./Town of Neepawa IWWTF Wastewater Transfer, Neepawa, MB**

The wastewater transfer line will be routed across parcels of land owned by the Town of Neepawa (i.e., the SH IWWTF, Neepawa golf course, and Town Municipal lagoon facility) as well as land owned by R3II. The line will commence at the SH IWWTF and extend west approximately 350 m to Municipal Road 86W (also known as Neepawa Road). At this point, the line will be routed north along Road 86W for approximately 500 m, before crossing the road and continuing west for approximately 250 m along a trail to the edge of the river valley. The line will then be routed downslope to the northeastern limits of the Neepawa golf course and cross the Whitemud River over a golf cart bridge to continue upslope to the south side of the Town municipal lagoon facility's easternmost lagoon cell, approximately 250 m. At this point, the line will be routed along the southern and western berm extents of the municipal lagoon cells for approximately 800 m, to terminate at Lagoon Cell #1 (see Figure 1-1). A more detailed description of the line and equipment is provided below.

The existing SH IWWTF is located in the Town of Neepawa on SW35-14-15W, adjacent to the R3 IWWTF. The existing R3 IWWTF is located in the Town of Neepawa on property owned by R3II. The legal description for the subject property is described as Parcels A and B, Plan 48468 (NLTO). Current Certificates of Title for the property are for R3 Innovations Inc., as noted in CT# 2421295 and CT# 2421294 (Appendix B). The existing R3 IWWTF currently occupies approximately 2.0 ha on the site (land and buildings).

The Neepawa Golf & Country Club (Neepawa golf course) is located in the Town of Neepawa on property owned by the Town on NW/NE34-14-15W, part SW34-14-15W, and part SE34-14-15W. The legal description of the subject property is described as Parcel A, Plan 37707 NLTO. Current Certificates of Title for the property are for Neepawa Golf and Country Club Inc. as noted in CT# 1680840 and CT# 1722322 NLTO.

The Town of Neepawa Municipal Treatment Facility (Town Municipal lagoon facility) is located in the Town of Neepawa on property owned by the Town on NW/NE34-14-15W. The legal description is described as the north half of NW34-14-15W, NE34-14-15W, and Plan 4872 NLTO. Current Certificates of Title for the property are for The Town of Neepawa as noted in CT# 2764298 NLTO, CT# 1680842 NLTO, CT# 121098 NLTO and CT# 101022 NLTO.

## **PROPOSED ALTERATION**

The proposed Project is the transfer of stored wastewater approximately 2.3 km northwest from the SH IWWTF to Cell #1 (the westernmost cell), at the Town municipal treatment facility. The Town of Neepawa has agreed to receive the wastewater transferred from R3 Innovations at the municipal facility (pending approval by MEC) for storage, treatment, and subsequent discharge to the Whitemud River via the municipal treatment system outlet.



5 Fabas Street, Box 100, La Broquerie, Manitoba R0A 0W0  
p: 1.204.424.5359 f: 1.204.424.5177 www.hylife.com

April 12, 2023

Page 3 of 11

**Reference: R3 Innovations Inc./Town of Neepawa IWWTF Wastewater Transfer, Neepawa, MB**

The wastewater would be conveyed using two 600 horsepower portable diesel-fueled pumps connected by flexible collapsible 0.2 m (8-inch) diameter sections of hose (rated up to 200 psi) temporarily laid overland between the two facilities. Sections of hose will be coupled using sexless couplers. One pump will be located at the west side of the SH IWWTF to draw wastewater from the cell and pump it via the hose to a point on the west side of the Whitemud River where a second pump will be placed to convey the wastewater the remaining distance to Cell #1 at the Town municipal facility.

The hose will run west from the pump placed at the SH IWWTF, to Municipal Road 86W and then proceed north along the Road ditch (crossing the road either via existing culvert or on top of the road, in which case the road would be temporarily closed and detour routes are available via neighbouring section roads) and then west across a field before proceeding downslope, reaching the eastern-most golf course bridge over the Whitemud River. The hose would be routed across the bridge, to a second pump on the west side of the river. From the second pump, the hose would be routed along the inner southern cell berms of the Town treatment facility and overland to the inner east side of Cell #1 where the discharge is planned to occur. Figure 1-2 illustrates the planned conveyance route from the SH IWWTF to the Town's Cell #1.

The Project would be completed by a licensed manure applicator engaged by R3 Innovations with regular monitoring of the line conducted by the contractor/R3II staff during the transfer. The equipment will be placed using two tractors and associated transport trucks, with equipment setup and take-down anticipated to take approximately 2 days. The transfer itself is expected to be completed within approximately 1 week.

Completion of the transfer would proceed as soon as possible in April 2023, upon regulatory approval and coordination with the selected contractor. No changes to permanent infrastructure are required for the transfer. The Town of Neepawa has agreed to receive the wastewater transferred from R3 Innovations at the municipal facility as described above for storage, treatment, and discharge to the Whitemud River via the municipal treatment system outlet.

Expected project inputs include diesel fuel for equipment vehicles and pumps (2-3 trucks to transport the crew, tractors, pumps and equipment to the site, and 2 portable pumps) as well as the wastewater from the SH IWWTF. Project outputs will include noise and emissions from the equipment vehicles and pumps and the discharge of the transferred wastewater to Cell #1 (the Primary Cell) at the Town municipal treatment facility. Pumps are expected to run continuously during the operation (approximately 1 week) with refueling conducted as necessary. Diesel fuel will be dispensed to the pumps at the PS from truck mounted slip tanks.

No changes to chemical, electricity, and natural gas usage at the R3 IWWTF are anticipated and incremental changes in terms of waste production, traffic volumes, or health and safety issues are anticipated to be negligible.



5 Fabas Street, Box 100, La Broquerie, Manitoba R0A 0W0  
p: 1.204.424.5359 f: 1.204.424.5177 www.hylife.com

April 12, 2023

Page 4 of 11

**Reference: R3 Innovations Inc./Town of Neepawa IWWTF Wastewater Transfer, Neepawa, MB**

## ENVIRONMENTAL EFFECTS AND MITIGATION

Biophysical and socio-economic valued components (VCs) that could be affected through interactions of the environment and the Project were identified to scope the assessment. The rationale for for exclusion or inclusion of further assessment for each VC is explained, and potential general interactions between the Project and VCs are identified in Table 1-1.

**Table 1-1 Designation of Valued Components**

Valued Component	Potential Project/ Environment Interaction	Rationale for Exclusion or Inclusion and Project Potential Effect
Air quality/ Greenhouse gas emissions	x	Air emissions are anticipated from wastewater transfer activities related to on-site vehicle and equipment use (e.g., 2 pumps and 4 pieces of equipment/transport vehicles). Project emissions are expected to result in a negligible increase in the context of existing site emissions and operational traffic at the HyLife and R3 facilities proximate to the PS. Air quality/greenhouse gas emissions have therefore been excluded from further assessment of environmental effects.
Soils/terrain	x	The limited ground pressure and size of the project equipment footprint (laydown of flexible hose and pump equipment) will result in limited disturbance of soils along the transfer route. Most of these soils have been previously disturbed/developed by the SH IWWTF, Town municipal treatment system and the R3 IWWTF. No excavations or changes to slopes are required for the hose transfer. Accordingly, interaction with soils/terrain is considered negligible and excluded from further assessment of environmental effects.



5 Fabas Street, Box 100, La Broquerie, Manitoba R0A 0W0  
p: 1.204.424.5359 f: 1.204.424.5177 www.hylife.com

April 12, 2023  
Page 5 of 11

**Reference: R3 Innovations Inc./Town of Neepawa IWWTF Wastewater Transfer, Neepawa, MB**

**Table 1-1 Designation of Valued Components**

Valued Component	Potential Project/ Environment Interaction	Rationale for Exclusion or Inclusion and Project Potential Effect
Surface water/ groundwater	x	<p>The potential adverse effects of the project on surface water and groundwater are negligible. A qualified contractor using well-maintained monitored equipment will conduct the transfer and, with the exception of the portion crossing the bridge, most of the line will be routed away from surface water or along the inner cell walls at the Town treatment facility.</p> <p>No changes in the licensed effluent discharge rate or quality are proposed for either facility and effects on effluent and surface water quality after treatment at the Town treatment facility will be negligible.</p> <p>The interaction of the Project with surface and groundwater will not be considered further, although accidents and malfunctions (i.e., leaks) specific to effects on this VC are considered below.</p>
Vegetation	x	<p>With the exception of the immediate vicinity of the Whitemud River bridge crossing, no native vegetation is present at the PS (with all lands previously developed as agricultural, golf course, roadside ditches, or industrial/wastewater treatment sites). The hose will be located across developed land and adjacent to existing treatment cells. Laydown of the transfer hose on the ground surface at the proposed time of year (early spring) is not anticipated to affect vegetation and no ground excavation is required. Vegetation is therefore excluded from further assessment of environmental effects.</p>
Wildlife and wildlife habitat	x	<p>No substantive wildlife or natural wildlife habitat is present on the PS and the temporary nature of Project construction provides mitigation for effects on wildlife. Effects on wildlife and wildlife habitat are therefore excluded from further assessment of environmental effects.</p>



5 Fabas Street, Box 100, La Broquerie, Manitoba R0A 0W0  
 p: 1.204.424.5359 f: 1.204.424.5177 www.hylife.com

April 12, 2023  
 Page 6 of 11

**Reference: R3 Innovations Inc./Town of Neepawa IWWTF Wastewater Transfer, Neepawa, MB**

**Table 1-1 Designation of Valued Components**

Valued Component	Potential Project/ Environment Interaction	Rationale for Exclusion or Inclusion and Project Potential Effect
Property and land use	x	<p>Project activities will occur within an existing industrial area and open space area in a location that has supported current land uses for many years. The PS is zoned for the existing land uses. Potential negative land use interactions are limited to a temporary short term road closure to facilitate hose crossing of Road 86W, unless an existing culvert crossing is used, and minor inconvenience caused by the presence of the transfer line across the fringe of the golf course and across the bridge (the bridge will remain usable, as will the golf course). The golf course is currently closed for the season so there is no conflict with use. Due to the limited nature of the interaction (a 0.2 m hose crossing lands that are largely not undergoing conflicting use during the Project) no negative interaction is anticipated from the temporary use. The VC is excluded from further assessment of environmental effects.</p>
Infrastructure and services	x	<p>The proposed Project will generate a negligible increase in traffic in the LAA due to the transportation and placement of required equipment (i.e., hose segments and pumps). With the potential exception of a minor closure of the northern portion of Road 86W (low traffic volume) if an existing culvert crossing is not present, there will be no need for changes in the provision of municipal infrastructure and services (i.e., external roads, sewer, water) in the PS. If the road closure is necessary to facilitate the hose crossing, detours via nearby section roads are available and will be managed in cooperation with the Town.</p> <p>The SH IWWTF and the Town municipal treatment system are utilities that support/provide wastewater treatment for R3 IWWTF and the Town. The proposed wastewater transfer to the Town municipal treatment system will support the emergency operation of the R3 IWWTF and is expected to have negligible effect on the capacity/treatment capability of the municipal treatment system. No significant negative interactions with infrastructure and services are anticipated and therefore further assessment of the VC is not required.</p>





5 Fabas Street, Box 100, La Broquerie, Manitoba R0A 0W0  
p: 1.204.424.5359 f: 1.204.424.5177 www.hylife.com

April 12, 2023  
Page 7 of 11

Reference: R3 Innovations Inc./Town of Neepawa IWWTF Wastewater Transfer, Neepawa, MB

**Table 1-1 Designation of Valued Components**

Valued Component	Potential Project/ Environment Interaction	Rationale for Exclusion or Inclusion and Project Potential Effect
Employment and economy	x	A positive financial benefit to the Town of Neepawa will be realized, through the fees charged to R3II for the treatment of the transferred wastewater and local crew purchasing effects (a small contractor workforce [less than 10 persons] is expected to complete the installation and decommissioning work in less than 2 weeks). No adverse effects related to employment and economy in the LAA are anticipated from the wastewater transfer and resultant effects are not considered further.
Heritage resources	x	The PS is located within an existing industrial area and open space area that is already disturbed. No ground disturbances are anticipated for the Project, heritage resources are therefore not considered further in the assessment
Aesthetics and noise	x	The PS is located within an existing industrial area and open space area; the proposed wastewater transfer will not result in a substantial change to LAA visual aesthetics due to the low-profile nature of the transfer line. The timing of the project mitigates visual impacts in proximity to the golf course as it will be closed at the time of the transfer. Noise will be generated by pump operations but the location of the Project and proximity to the nearest residence is expected to mitigate sound with negligible effect to residences. Otherwise, noise generation will continue to be typical of historic use in the area. No noise complaints have been received by R3II in several years of operation including during previous construction and facility expansions. The Project will not substantially affect aesthetics or noise in the LAA. Aesthetics and noise have therefore been excluded from further assessment of environmental effects.
Health and safety	x	Contractors engaged in the Project will be subject to worker protection standards and procedures under <i>The Workplace Safety and Health Act (Manitoba)</i> . The proposed transfer is not anticipated to change the risks for worker/public Health and Safety. Health and Safety is therefore excluded from further assessment of environmental effects.



5 Fabas Street, Box 100, La Broquerie, Manitoba R0A 0W0  
 p: 1.204.424.5359 f: 1.204.424.5177 www.hylife.com

April 12, 2023

Page 8 of 11

**Reference: R3 Innovations Inc./Town of Neepawa IWWTF Wastewater Transfer, Neepawa, MB**

**Table 1-1 Designation of Valued Components**

Valued Component	Potential Project/ Environment Interaction	Rationale for Exclusion or Inclusion and Project Potential Effect
Notes: x – no significant potential project/environment interaction ✓ - potential significant project/environment interaction PS – Project Site (SH IWWTF Property/Town of Neepawa Municipal Lagoon Property/R3 IWWTF Property) LAA – Local Assessment Area (3k radius from PS)		

As the Project only involves the transfer of wastewater from one wastewater facility to another for storage, treatment, and discharge in accordance with licence requirements, the mitigation measures incorporated in the Project are primarily related to routing and placement of the transfer line, use of a qualified manure/wastewater application contractor, conducting the transfer in early spring, and planning the transfer to be completed in a limited time.

#### **EFFECTS OF THE ENVIRONMENT ON THE PROJECT**

A spring flooding event, like the severe summer flooding event that occurred in 2021 at Neepawa from the rupture of the Park Lake dam created downstream severe erosion and washout effects along the Whitemud River reaching as far as portions of the municipal golf course. Such an event could cause short-term interruption to the wastewater transfer and potentially damage the golf course bridge used for routing the transfer hose. The dam has not yet been reconstructed, so the risk of such a release and effects on the proposed Project is negligible. Furthermore, continual operational monitoring of the transfer operation will provide the ability to pause the wastewater transfer and relocate equipment if flood conditions develop that would put the transfer operation or bridge infrastructure at risk. Implementation of environmental protection measures for drainage control and flooding response will serve to limit flooding effects on Project infrastructure and personnel.

#### **ACCIDENTS AND MALFUNCTIONS**

Accidents and malfunctions can potentially result in harm to on-site personnel, damage to equipment, the release of contaminants and/or hazardous materials from equipment/vehicles and the transfer line, and degradation of the environment and human health and safety. The effects of accidents and malfunctions for the Project are primarily related to the potential for transfer line failure and/or fuel spills due to leaks or improper storage and handling. R3II will





5 Fabas Street, Box 100, La Broquerie, Manitoba R0A 0W0  
p: 1.204.424.5359 f: 1.204.424.5177 www.hylife.com

April 12, 2023

Page 9 of 11

**Reference: R3 Innovations Inc./Town of Neepawa IWWTF Wastewater Transfer, Neepawa, MB**

engage a qualified manure applicator to conduct and monitor the transfer and mitigate the risk of spills/leakage and resultant effects on groundwater and surface water.

During operation, there exists the potential for environmental effects due to fuel spills and/or wastewater leakage from vehicles, pump equipment, transfer hoses, and accidents that can result in the release of fluids to the environment (i.e., diesel, oils, wastewater, etc.). The first 1.2 km of the transfer hose route will be across fields, or along Municipal Road 86W, away from surface water. Further, the hose sections along the south side of the Town treatment facility will be routed along the inner side of the treatment cells enroute to Cell #1 so that potential leaks (if they were to develop) would flow into a treatment cell.

Pumps will be placed at the SH IWWTF and west of the bridge to maintain flow rates and line pressures. The proposed transfer line will be placed on existing developed properties and monitored regularly for signs of leaks (pressure drop) during operation by the contractor and/or R3II staff. The pumps can be remotely operated/shut down by the operator to ensure that flow is properly maintained, and the risk of leakage is limited. Monitoring will be in place to meet requirements per previous approval correspondence for a similar procedure (letter from Manitoba Conservation and Climate to R3 Innovations Inc. and Town of Neepawa – Environment Act Licence 2870 RRR – Notice of Alteration, December 10, 2021).

If a notable change in pressure develops, pumping will be stopped, the line inspected to determine needed repairs or changes in operation, and the need for repairs/clean-up will be determined and implemented if necessary. Clean-up would be completed by earth moving equipment and/or by vacuum truck (if liquid) that would be retained by R3II if required.

During the wastewater transfer operations from the SH IWWTF, regular visual inspection of the transfer line and pump locations along the route across the subject properties will be undertaken for signs of leakage or other potential signs of wear. The implementation of, and adherence to, measures outlined above to mitigate potential effects related to accidents and malfunctions will serve to reduce the likelihood of these events occurring.

Recovery from effects of such an event on groundwater or the river could potentially be short- to medium-term in duration and multiple-irregular in frequency (limited to the 1-week project duration). Adverse effects on groundwater would be reversible with remediation.

Additional measures to avoid adverse effects include the following:

- Appropriate fire extinguishers will be available on-site during operation and maintained to manufacturer's standards.



5 Fabas Street, Box 100, La Broquerie, Manitoba R0A 0W0  
p: 1.204.424.5359 f: 1.204.424.5177 www.hylife.com

April 12, 2023  
Page 10 of 11

**Reference: R3 Innovations Inc./Town of Neepawa IWWTF Wastewater Transfer, Neepawa, MB**

- Potentially hazardous materials will be stored and handled at dedicated areas and labelled in accordance with applicable regulatory requirements.
- Hazardous materials will be transported in accordance with the *Dangerous Goods Handling and Transportation Act* and used according to product-use instructions.
- Refueling of vehicles and equipment will adhere to proper procedures.
- Emergency spill kits will be maintained on the SH IWWTF site and staff will be trained to properly deploy spill kit materials and cleanup spills.
- Inspections of hydraulic and fuel systems on equipment and machinery will be undertaken on a regular basis. Leaks detected will be repaired immediately by trained personnel.
- The transfer line will be routed away from surface water bodies to the extent practical, including placement along the inner cell boundaries at the Town municipal treatment facility, and routing over the bridge across the Whitemud River.
- The transfer line and diesel pumps will be regularly monitored and maintained to detect and avoid leaks and failures.
- R3II continues to maintain policies related to emergency preparedness, workplace hazardous materials information system (WHMIS) and spill response procedures.

## CONCLUSION

This NOA application has been prepared by R3II for a stored wastewater transfer from the SH IWWTF to the Town municipal treatment facility for storage, treatment, and discharge to the Whitemud River via the municipal facility outlet. The NOA application is filed in accordance with Section 14(1) of *The Environment Act* that requires a proponent to notify the Director (for Class 1 and 2 developments) if the proponent intends to alter a licensed development (MSD 2016). Potential interactions of the Project and the environment were evaluated with likely interactions examined to assess residual effects on the assumption of typical mitigation measures representative of best practices. Based on information available to date and as presented herein, adverse effects of the proposed wastewater transfer to the biophysical and socio-economic environment are expected to be not significant. It is anticipated that the proposed alterations will be considered as a minor alteration to the R3 IWWTF licensed development.

## CLOSURE

Should you require any additional information or clarifications please do not hesitate to contact Mr. Sheldon Stott, P.Ag., Senior Director of Corporate Sustainability, HyLife Foods LP; or Mr. Stephen Biswanger, P.Eng., Stantec Consulting Ltd.



5 Fabas Street, Box 100, La Broquerie, Manitoba R0A 0W0  
p: 1.204.424.5359 f: 1.204.424.5177 www.hylife.com

April 12, 2023  
Page 11 of 11

**Reference: R3 Innovations Inc./Town of Neepawa IWWTF Wastewater Transfer, Neepawa, MB**

Regards,




Sheldon Stott, P.Ag. Senior Director of Corporate Sustainability

Attachment: NOA Form and Supporting Figures

c. Stephen Biswanger, Stantec


# Notice of Alteration Form

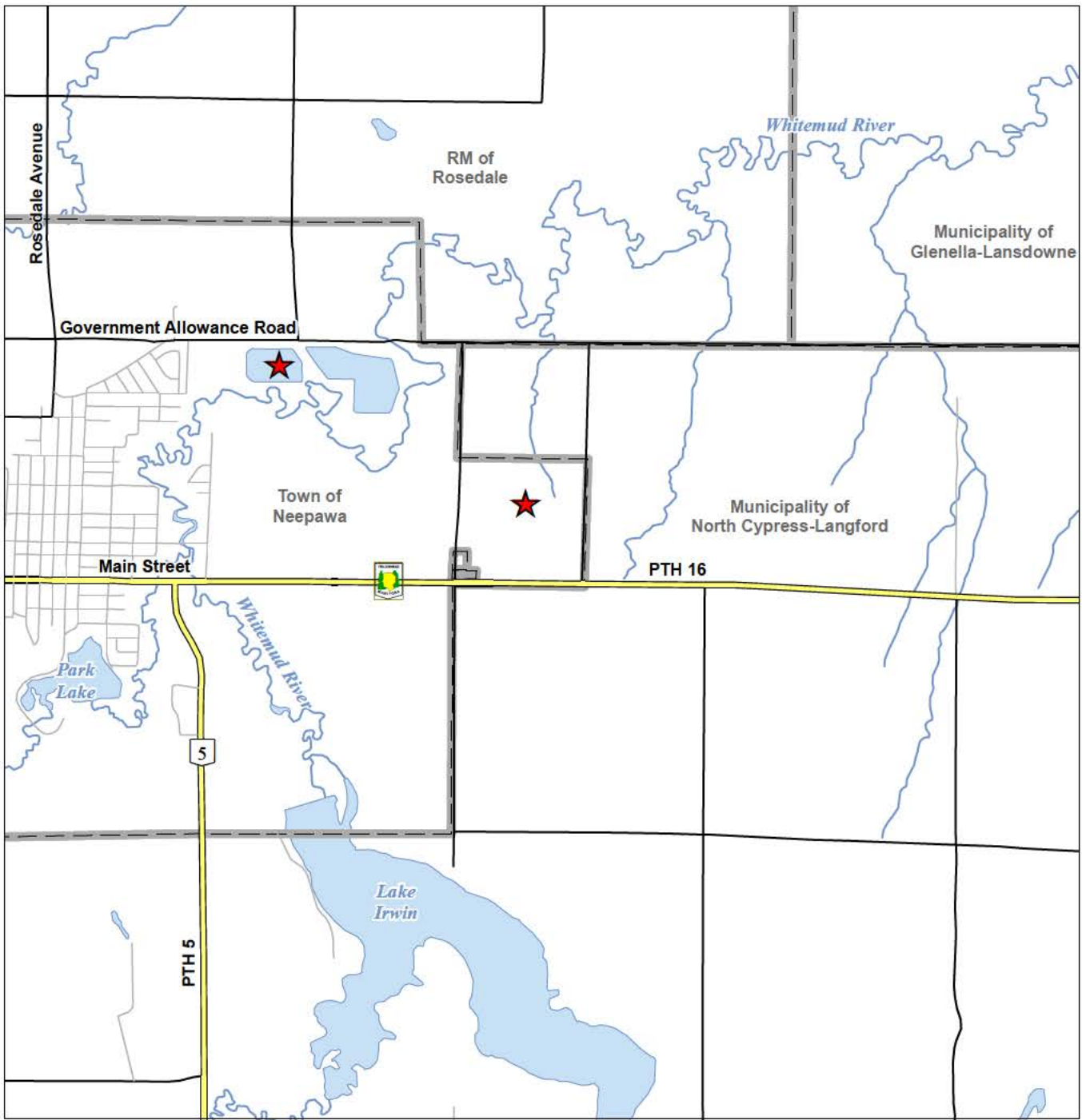
File No. : 2755.20	Environment Act Licence No. : 2870 RRR
Legal name of the Licencee: R3 Innovations Inc./Town of Neepawa	
Name of the development: R3 Innovations Inc./Town of Neepawa 2023 WW Transfer	
Category and Type of development per Classes of Development Regulation: Waste Treatment and Storage <input type="button" value="v"/> <SELECT> <input type="button" value="v"/>	
Licencee Contact Person: Mr. Sheldon Stott, P.Ag., Senior Director of Corporate Sustainability Mailing address of the Licencee: Box 1000, 623 Main Street City: Neepawa Province: Manitoba Postal Code: R3C 1A5 Phone Number: (204) 424-2313 Fax: (204) 424-5177 Email: sheldon.stott@hylife.com	
Name of proponent contact person for purposes of the environmental assessment (e.g. consultant): Mr. Stephen Biswanger, P.Eng.	
Phone: (204) 924-7061 Fax: (204) 453-9012	Mailing address: 500 - 311 Portage Avenue, Winnipeg, MB
Email address: stephen.biswanger@stantec.com	
Short Description of Alteration (max 90 characters): R3 Innovations is seeking to transfer wastewater to the Town of Neepawa municipal plant	
Alteration fee attached: Yes: <input checked="" type="checkbox"/> No: <input type="checkbox"/>	
If No, please explain:	
Date: 2023-04-12	Signature:  Printed name: Sheldon Stott
<p>A complete Notice of Alteration (NoA) consists of the following components:</p> <ul style="list-style-type: none"> <li><input checked="" type="checkbox"/> Cover letter</li> <li><input checked="" type="checkbox"/> Notice of Alteration Form</li> <li><input checked="" type="checkbox"/> 1 hard copy and 1 electronic copy of the NoA detailed report (see "<a href="#">Information Bulletin - Alteration to Developments with Environment Act Licences</a>")</li> <li><input checked="" type="checkbox"/> \$500 Application fee, if applicable (Cheque, payable to the Minister of Finance)</li> </ul>	
<p><b>Submit the complete NoA to:</b>                  Director, Environmental Approvals Branch                  Manitoba Environment, Climate and Parks                  1007 Century Street                  Winnipeg, Manitoba R3H 0W4  <a href="mailto:EABDirector@gov.mb.ca">EABDirector@gov.mb.ca</a></p> <p><b>For more information:</b>                  Phone: (204) 945-8321 Fax: (204) 945-5229  <a href="https://www.gov.mb.ca/sd/permits_licenses_approvals/eal/licence/index.html">https://www.gov.mb.ca/sd/permits_licenses_approvals/eal/licence/index.html</a></p>	
<p><b>Note: Per Section 14(3) of the Environment Act, Major Notices of Alteration must be filed through submission of an Environment Act Proposal Form (see "Information Bulletin – Environment Act Proposal Report Guidelines")</b></p>	



# Notice of Alteration Form



File No. : 2755.20	Environment Act Licence No. : 2870 RRR
Legal name of the Licencee: R3 Innovations Inc./Town of Neepawa	
Name of the development: R3 Innovations Inc./Town of Neepawa 2023 WW Transfer	
Category and Type of development per Classes of Development Regulation: Waste Treatment and Storage <input type="button" value="v"/> <SELECT> <input type="button" value="v"/>	
Licencee Contact Person: Ms. Colleen Synchyshyn, CAO Mailing address of the Licencee: Box 339, 275 Hamilton Street City: Neepawa Province: Manitoba Postal Code: ROJ 1H0 Phone Number:(204) 476-7603 Fax:- Email: neepawacao@wcgwave.ca	
Name of proponent contact person for purposes of the environmental assessment (e.g. consultant): Mr. Stephen Biswanger, P.Eng.	
Phone: (204) 924-7061 Fax: (204) 453-9012	Mailing address: 500 - 311 Portage Avenue, Winnipeg, MB
Email address: stephen.biswanger@stantec.com	
Short Description of Alteration (max 90 characters): R3 Innovations is seeking to transfer wastewater to the Town of Neepawa municipal plant	
Alteration fee attached: Yes: <input checked="" type="checkbox"/> No: <input type="checkbox"/> If No, please explain:	
Date: 2023-04-12	Signature:  Printed name: Colleen Synchyshyn
<p>A complete Notice of Alteration (NoA) consists of the following components:</p> <ul style="list-style-type: none"> <li><input checked="" type="checkbox"/> Cover letter</li> <li><input checked="" type="checkbox"/> Notice of Alteration Form</li> <li><input checked="" type="checkbox"/> 1 hard copy and 1 electronic copy of the NoA detailed report (see "<a href="#">Information Bulletin - Alteration to Developments with Environment Act Licences</a>")</li> <li><input checked="" type="checkbox"/> \$500 Application fee, if applicable (Cheque, payable to the Minister of Finance)</li> </ul>	
<p><b>Submit the complete NoA to:</b>                  Director, Environmental Approvals Branch                  Manitoba Environment, Climate and Parks                  1007 Century Street                  Winnipeg, Manitoba R3H 0W4  <a href="mailto:EABDirector@gov.mb.ca">EABDirector@gov.mb.ca</a></p> <p><b>For more information:</b>                  Phone: (204) 945-8321 Fax: (204) 945-5229  <a href="https://www.gov.mb.ca/sd/permits/licenses_approvals/eal/licence/index.html">https://www.gov.mb.ca/sd/permits/licenses_approvals/eal/licence/index.html</a></p>	
<p><b>Note: Per Section 14(3) of the Environment Act, Major Notices of Alteration must be filed through submission of an <a href="#">Environment Act Proposal Form</a> (see "<a href="#">Information Bulletin – Environment Act Proposal Report Guidelines</a>")</b></p>	



- Legend**
- ★ Site Location
  - Major Road
  - Minor Road
  - Local Road
  - Watercourse
  - Waterbody
  - Rural Municipality



**Project Location** Prepared by ACampigotto on 2023-04-12  
 Town of Neepawa, Manitoba Reviewed by BKrawchuk on 2023-04-12

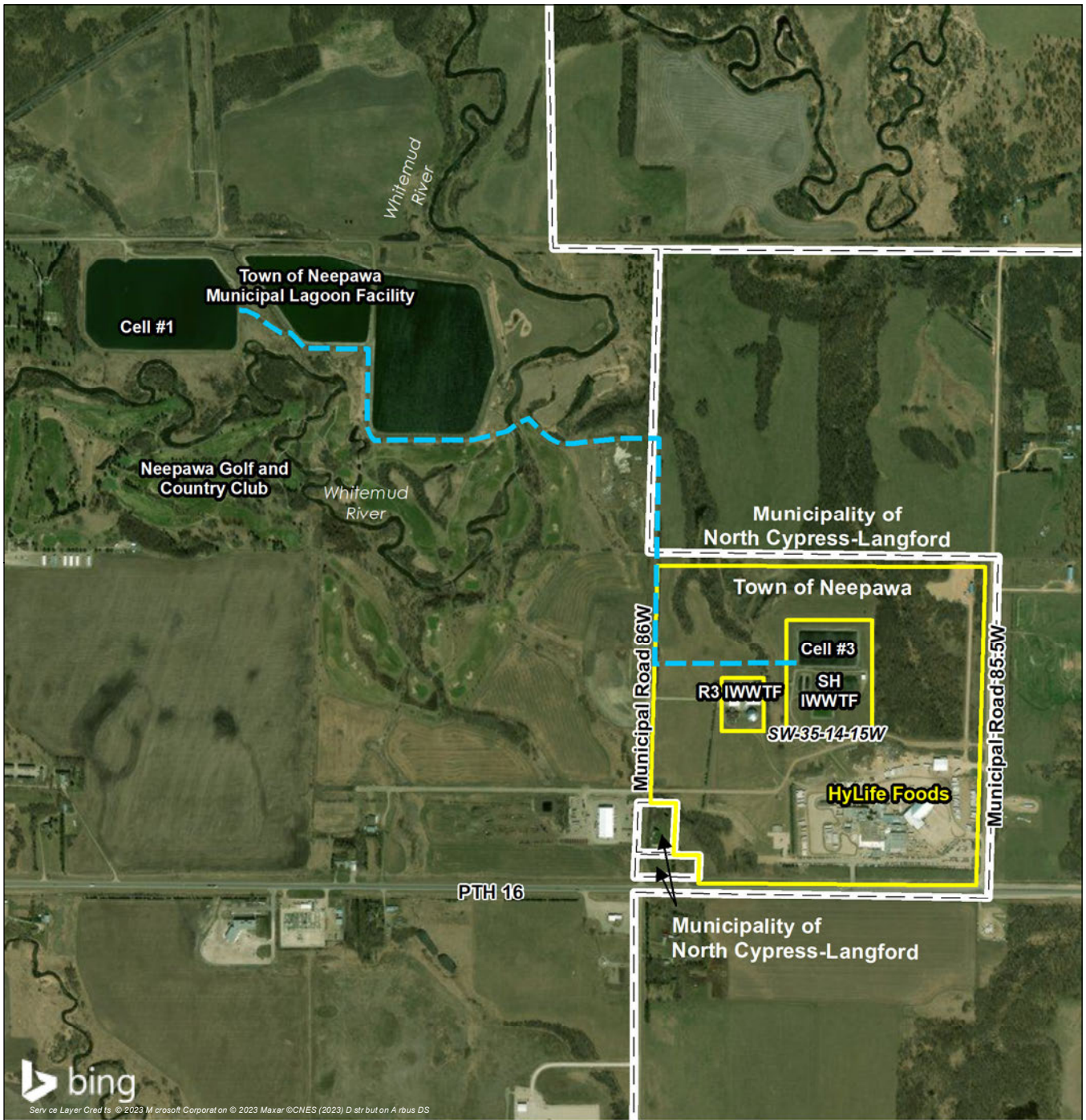
**Client/Project** 111440388  
 R3 Innovations Inc./Town of Neepawa  
 Wastewater Transfer  
 Notice of Alteration

**Figure No.**  
 1-1

**Title**  
 Project Location

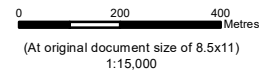
**Notes**  
 1. Coordinate System: NAD 1983 UTM Zone 14N  
 2. Base Data Sources: Government of Manitoba





**Legend**

- Rural Municipality
- Planned Transfer Hose Route



*Project Location* Town of Neepawa, Manitoba  
 Prepared by ACampigotto on 2023-04-12  
 Reviewed by BKrawchuk on 2023-04-12

*Client/Project* R3 Innovations Inc./Town of Neepawa  
 Wastewater Transfer  
 Notice of Alteration  
 11440368

*Figure No.*  
**1-2**

*Title*  
**Planned Transfer Hose Route**

**Notes**

1. Coordinate System: NAD 1983 UTM Zone 14N
2. Base Data Sources: Government of Manitoba.
3. Aerial imagery Source: Microsoft product screenshot reprinted with permission from Microsoft Corporation.