



October 31, 2014

Tracey Braun, M.Sc.
Director, Environmental Assessment and Licensing
Manitoba Conservation
123 Main Street, Suite 160,
Winnipeg, Manitoba R3C 1A5

Dear Ms. Braun:

Re: Notice of Alteration for Maple Leaf Foods Inc., 6355 Richmond Avenue East, Brandon – Environment Act Licence No. 2311 S2 4R

Further to your discussion with Anne Tennier and your letter dated July 30th, 2014 granting authorization to continue to operate a temporary dry manure scrape out pad at our Brandon pork plant, we are submitting this letter in accordance with Section 14 (1)(a) of *The Environment Act*, as a request for an alteration to our plant licence No. 2311 S2 4R.

We are requesting your authorization to proceed with the construction and operation of a second scrape out pad on which to handle manure soaked straw from our hog hauling trucks. The plant has been operating on a temporary pad since the spring of 2014 and is authorized to operate the temporary pad until May 29th, 2015.

The recent detection of a case of *Porcine Epidemic Diarrhea* virus (PEDv) in Manitoba continues to concern us, and as such we wish to make permanent this extra security precaution to protect the health of the livestock from possible cross-contamination.

ALTERATION

The proposed permanent pad covers the identical footprint of the authorized temporary pad. Figure 1 (attached) shows the footprint of the proposed pad on the site. It will be built approximately 130 m north of the current permanent manure pad.

The pad will be constructed as concrete slab-on-grade surrounded by concrete blocks. As with the original pad, the trucks will unload their straw on the concrete and the straw will be contained within the block structure. The straw will continue to be removed daily.

The pad will be graded to a drain. Any drainage or runoff on the pad will be collected in a sump. This sump will drain to a lift station that will pump the runoff into our wastewater pre-treatment system, and subsequently to the City of Brandon combined wastewater treatment facility to receive full treatment before discharge to the Assiniboine River.

The concrete pad and lift station are currently in the design engineering phase. Detailed drawings and specifications will be available when the construction contract is awarded (currently scheduled for

passionate people;
passionate about food



mid-November 2014). The lift station is currently scheduled to be commissioned in March of 2015. The new pad will be ready to operate before the temporary authorization expires in May of 2015.

OPERATIONS

As discussed in telephone conversations with Anne Tennier, the material being handled at this pad is manure-soaked straw from the trailers of our livestock haul trucks. There is no liquid manure handled at the facility. The straw is pushed into the collection box as soon as the trucks are scraped out and the material is removed daily. There will be no change to any of our operations as a result of the new pad.

ENVIRONMENTAL EFFECTS

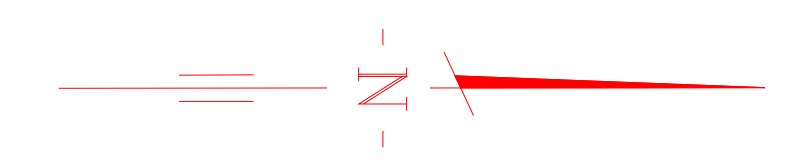
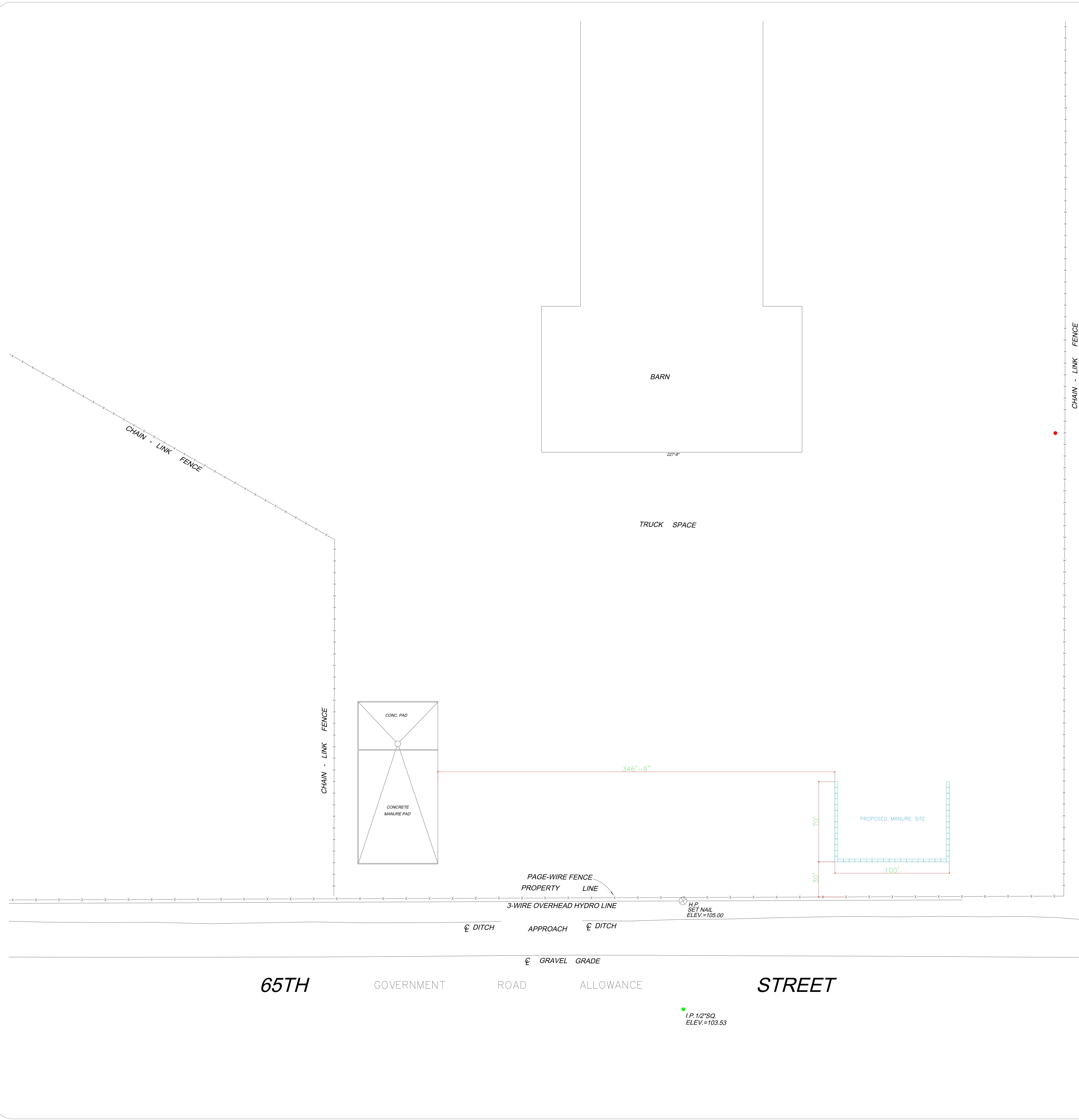
We do not expect any significant environmental effects as a result of this alteration. The material is dry and is collected daily. Any surface water runoff that comes in contact with the material will be collected and thoroughly treated before discharge. The volume and loading of the runoff into the wastewater treatment system is not expected to be significant. A slight increase in truck traffic during construction would be seen, however this would be minor and temporary. This alteration would not affect the number of hog trucks or any production levels in the plant.

Ms. Braun, I greatly appreciate the effort that you and your staff will make in processing this request for alteration. Should you or your staff have any questions or concerns, please do not hesitate to contact me at 204-235-8100 ext. 4103 or on my cell at 204-229-9594.

Sincerely,

Joel Grant, M.Sc.
Environmental Projects Manager
Maple Leaf Foods Inc.

- cc. Siobhan Burland Ross, Manitoba Conservation
- Jennifer Winsor, Manitoba Conservation
- Morgan Curran-Blaney, Plant Manager, Maple Leaf Foods
- Dan Lenton, Production Manager, Maple Leaf Foods
- Anne Tennier, VP Environmental Affairs, Maple Leaf Foods
- Steve Ingram, VP Manufacturing, Maple Leaf Foods



IN PART OF THE
S.E. 1/4 SEC. 19, TWP. 10, RGE 18 W.P.M.

NOTES:
ALL DISTANCES ARE IN FEET AND DECIMALS THEREOF.
SURVEY BARS WERE FOUND OR PLACED AT ALL POINTS SHOWN THUS .
CHAIN-LINK FENCE IS SHOWN THUS .
PAGE-WIRE FENCE SHOWN THUS .
OVERHEAD HYDRO LINES SHOWN THUS .
HYDRO POLE SHOWN THUS .

REVISIONS				
REV	DESCRIPTION	REV BY	VER BY	DATE
-	AS BUILT			

NO.	REVISION	DATE	BY

MAPLE LEAF FOODS
BRANDON, MB

SCALE: NTS
DATE: FEBRUARY 14, 2014
DRAWN: BCW
DWG. NO: -

PROJECT NO: CONSULTANT DRAWING NO.: Cont. Draw No.
DESIGNED BY: Des By DATE DESIGNED: Des Date

ALL RIGHTS RESERVED. NO PART OF THIS WORK MAY BE USED, REPRODUCED, DISTRIBUTED, DISPLAYED, OR COMMUNICATED IN ANY WAY, FORM, OR BY ANY MEANS WITHOUT THE PRIOR WRITTEN CONSENT OF MAPLE LEAF FOODS INC.



DRAWING TITLE:
TEMPORARY MANURE SITE
SECONDARY MANURE SITE

PLANT ADDRESS:	CAD FILE:
DRAWN BY: BCW	DATE DRAWN: 14/02/14
CHECKED BY: Cbk By	DATE CHECKED: Cbk Date
SCALE: NTS	SIZE: E
DATE PLOTTED: Pli Date	DRAWING NO: -

