

**PREFERRED ROUTE MAP GRIDS 1 THROUGH 17**

**D83P Transmission Project**

Project Infrastructure

— Preferred Route

Infrastructure

— Transmission Line

■ Converter / Transformer Station

Landbase

— Trans Canada Highway

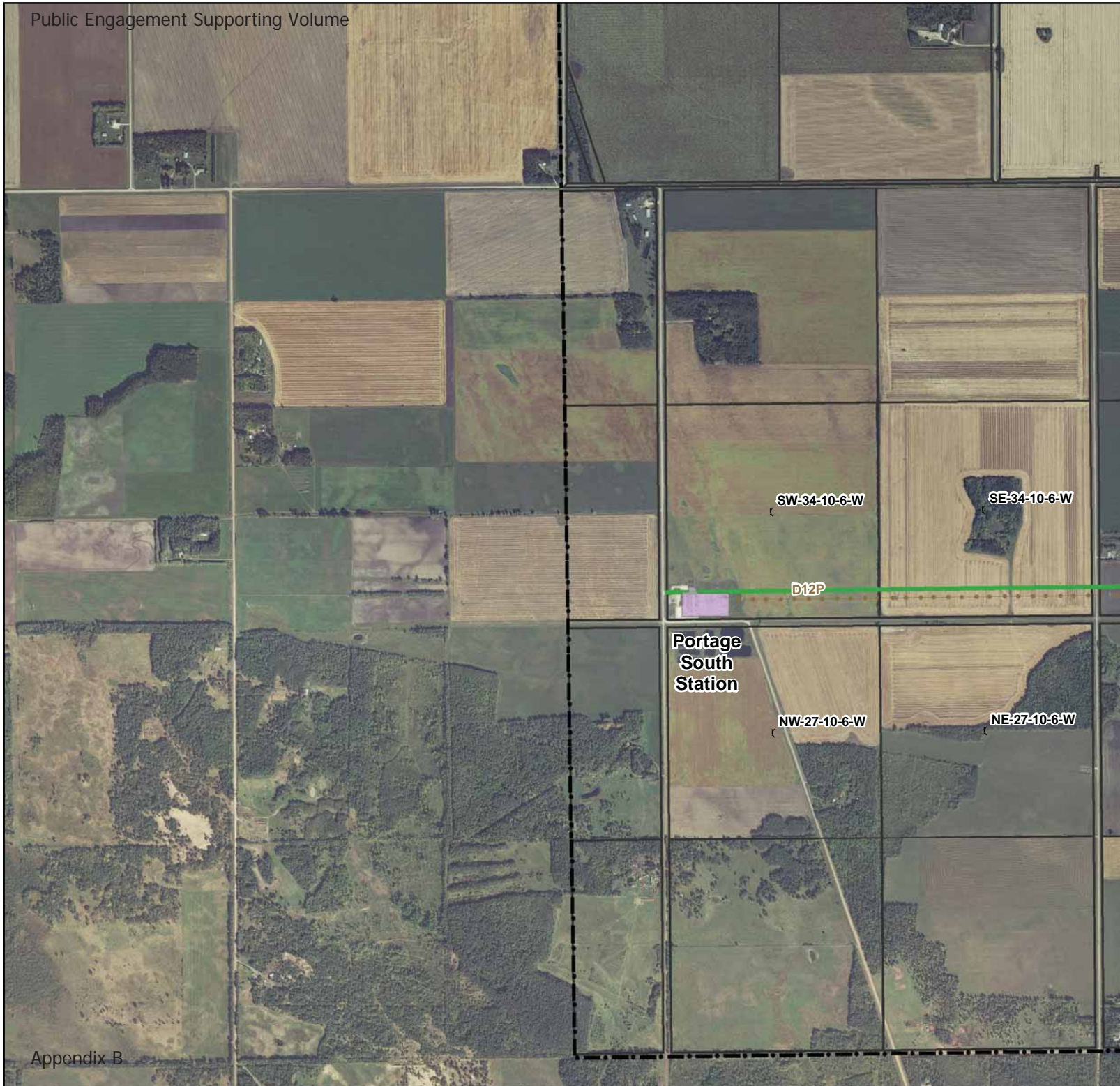
— Provincial Road

— Railway

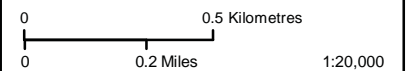
□ Study Area

□ Landowner Parcel

□ Rural Municipality



Coordinate System: UTM Zone 14N NAD83  
Data Source: MBHydro, ProvMB, NRCAN,  
Stantec, WRCS  
Date Created: April 2, 2012



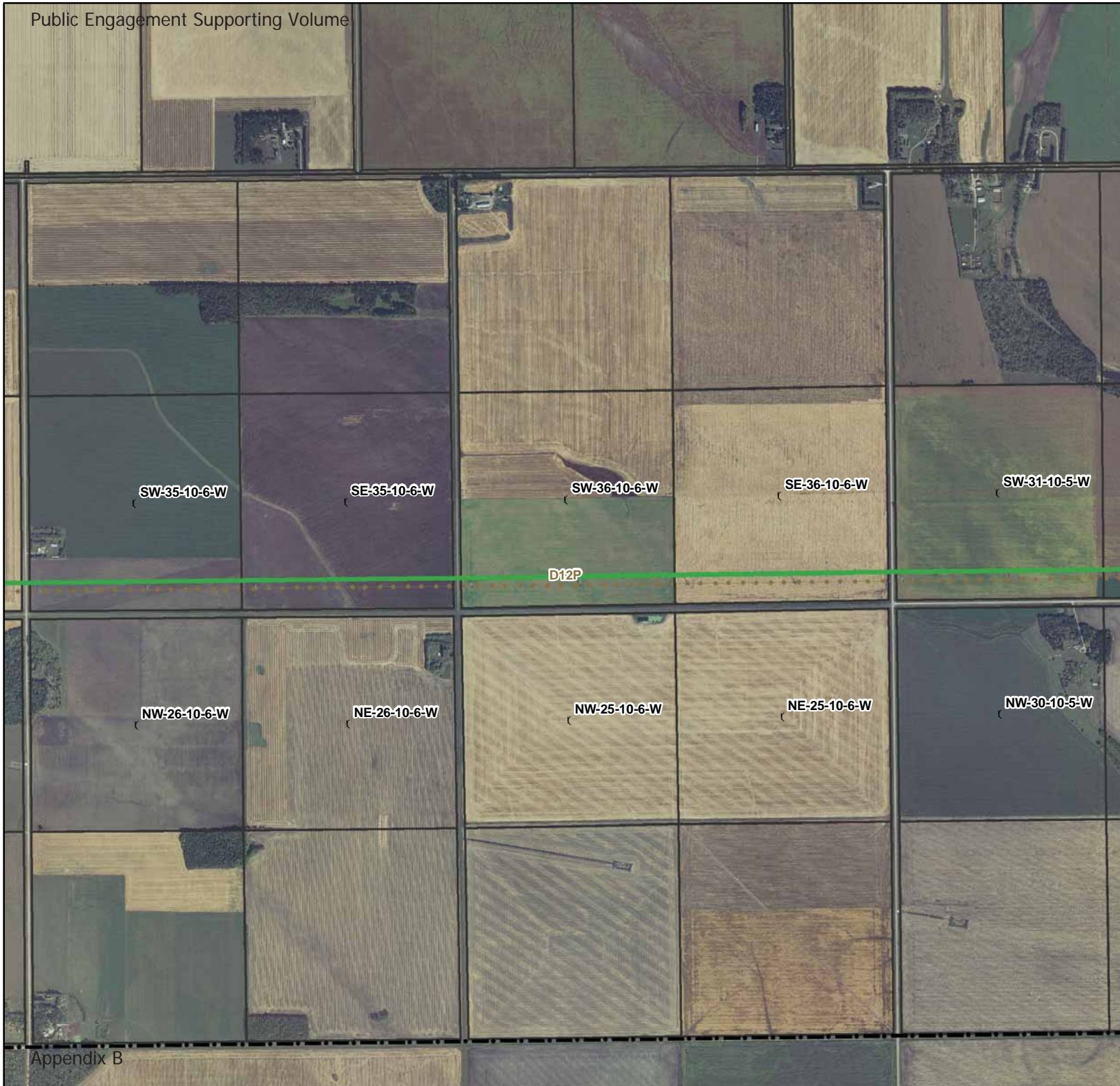
**Preferred Route  
Grid 1**

**D83P Transmission Project**

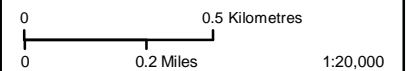
Project Infrastructure  
— Preferred Route

Infrastructure  
— Transmission Line

Landbase  
— Trans Canada Highway  
— Provincial Road  
— Railway  
— Study Area  
— Landowner Parcel  
— Rural Municipality



Coordinate System: UTM Zone 14N NAD83  
Data Source: MBHydro, ProvMB, NRCAN,  
Stantec, WRCS  
Date Created: April 2, 2012



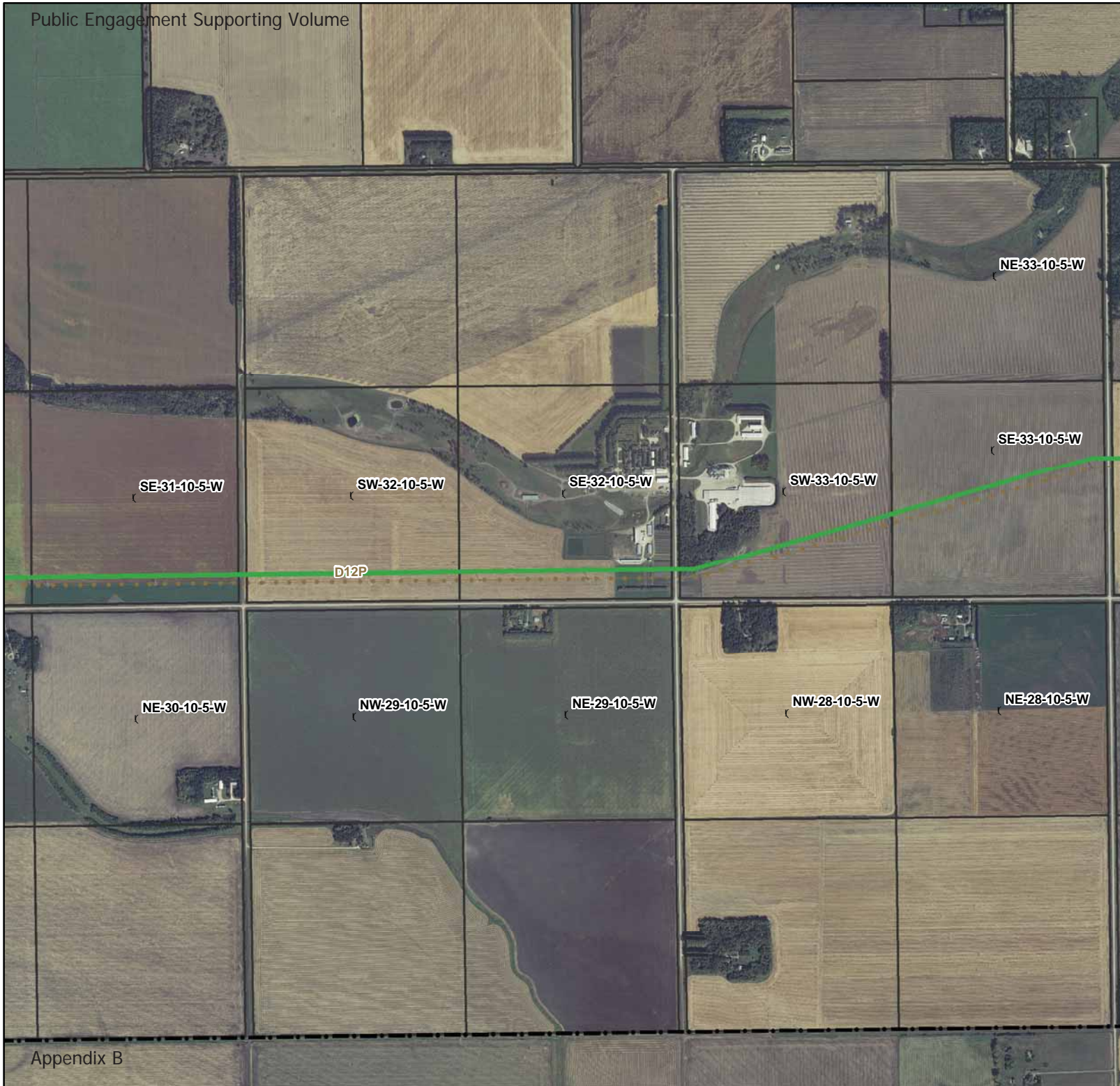
**Preferred Route  
Grid 2**

**D83P Transmission Project**

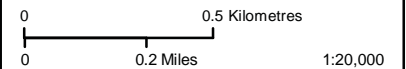
Project Infrastructure  
— Preferred Route

Infrastructure  
— Transmission Line

Landbase  
— Trans Canada Highway  
— Provincial Road  
— Railway  
— Study Area  
— Landowner Parcel  
— Rural Municipality



Coordinate System: UTM Zone 14N NAD83  
Data Source: MBHydro, ProvMB, NRCAN,  
Stantec, WRCS  
Date Created: April 2, 2012



**Preferred Route  
Grid 3**

**D83P Transmission Project**

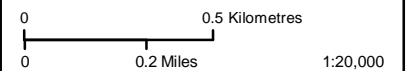
Project Infrastructure  
— Preferred Route

Infrastructure  
— Transmission Line

Landbase  
— Trans Canada Highway  
— Provincial Road  
— Railway  
— Study Area  
— Landowner Parcel  
— Rural Municipality




Coordinate System: UTM Zone 14N NAD83  
Data Source: MBHydro, ProvMB, NRCAN,  
Stantec, WRCS  
Date Created: April 2, 2012




**Preferred Route  
Grid 4**

**D83P Transmission Project**

Project Infrastructure

 Preferred Route

Infrastructure


 Transmission Line


Landbase

 Trans Canada Highway

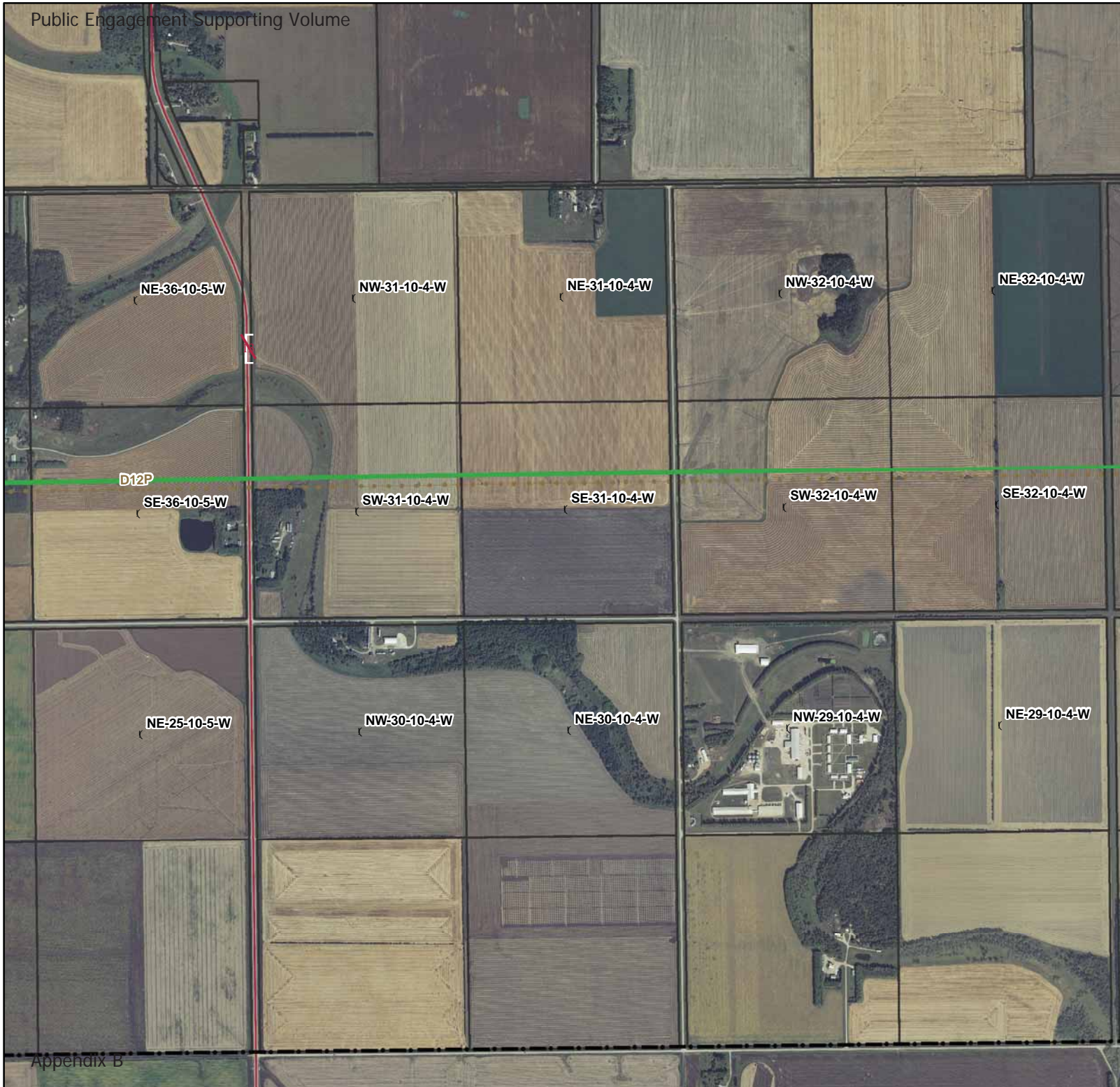
 Provincial Road

 Railway

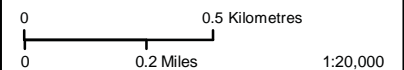
 Study Area

 Landowner Parcel

 Rural Municipality





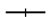





Coordinate System: UTM Zone 14N NAD83  
Data Source: MBHydro, ProvMB, NRCAN,  
Stantec, WRCS  
Date Created: April 2, 2012



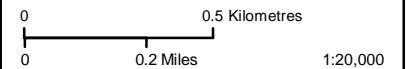
**Preferred Route  
Grid 5**

**D83P Transmission Project**

- Project Infrastructure
-  Preferred Route
- Infrastructure
-  Transmission Line
- Landbase
-  Trans Canada Highway
  -  Provincial Road
  -  Railway
  -  Study Area
  -  Landowner Parcel
  -  Rural Municipality



Coordinate System: UTM Zone 14N NAD83  
 Data Source: MBHydro, ProvMB, NRCAN,  
 Stantec, WRCS  
 Date Created: April 2, 2012



**Preferred Route  
Grid 6**

**D83P Transmission Project**



Project Infrastructure

— Preferred Route

Infrastructure

— Transmission Line

Landbase

— Trans Canada Highway

— Provincial Road

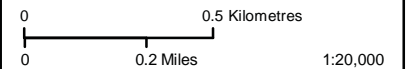
— Railway

— Study Area

— Landowner Parcel

— Rural Municipality

Coordinate System: UTM Zone 14N NAD83  
Data Source: MBHydro, ProvMB, NRCAN,  
Stantec, WRCS  
Date Created: April 2, 2012




**Preferred Route  
Grid 7**




**D83P Transmission Project**

Project Infrastructure


 Preferred Route

Infrastructure


 Transmission Line


Landbase

 Trans Canada Highway

 Provincial Road

 Railway

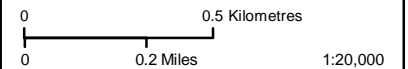
 Study Area

 Landowner Parcel

 Rural Municipality



Coordinate System: UTM Zone 14N NAD83  
Data Source: MBHydro, ProvMB, NRCAN,  
Stantec, WRCS  
Date Created: April 2, 2012



**Preferred Route  
Grid 8**

**D83P Transmission Project**

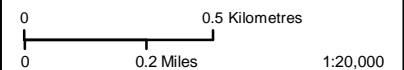
Project Infrastructure  
— Preferred Route

Infrastructure  
— Transmission Line

Landbase  
— Trans Canada Highway  
— Provincial Road  
— Railway  
— Study Area  
— Landowner Parcel  
— Rural Municipality



Coordinate System: UTM Zone 14N NAD83  
Data Source: MBHydro, ProvMB, NRCAN,  
Stantec, WRCS  
Date Created: April 2, 2012



**Preferred Route  
Grid 9**

**D83P Transmission Project**

Project Infrastructure

— Preferred Route

Infrastructure

— Transmission Line

Landbase

— Trans Canada Highway

— Provincial Road

— Railway

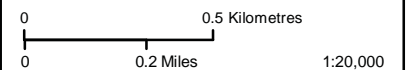
— Study Area

— Landowner Parcel

— Rural Municipality



Coordinate System: UTM Zone 14N NAD83  
Data Source: MBHydro, ProvMB, NRCAN,  
Stantec, WRCS  
Date Created: April 2, 2012



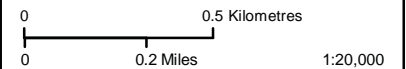
**Preferred Route  
Grid 10**

**D83P Transmission Project**

- Project Infrastructure
- Preferred Route
- Infrastructure
- Transmission Line
- Landbase
- Trans Canada Highway
  - Provincial Road
  - Railway
  - Study Area
  - Landowner Parcel
  - Rural Municipality




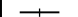




Coordinate System: UTM Zone 14N NAD83  
 Data Source: MBHydro, ProvMB, NRCAN,  
 Stantec, WRCS  
 Date Created: April 2, 2012



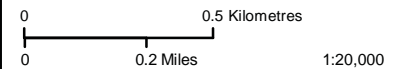
**Preferred Route  
 Grid 11**

**D83P Transmission Project**

- Project Infrastructure
-  Preferred Route
- Infrastructure
-  Transmission Line
- Landbase
-  Trans Canada Highway
  -  Provincial Road
  -  Railway
  -  Study Area
  -  Landowner Parcel
  -  Rural Municipality



Coordinate System: UTM Zone 14N NAD83  
 Data Source: MBHydro, ProvMB, NRCAN, Stantec, WRCS  
 Date Created: April 2, 2012



**Preferred Route  
Grid 12**

**D83P Transmission Project**

Project Infrastructure

— Preferred Route

Infrastructure

— Transmission Line

Landbase

— Trans Canada Highway

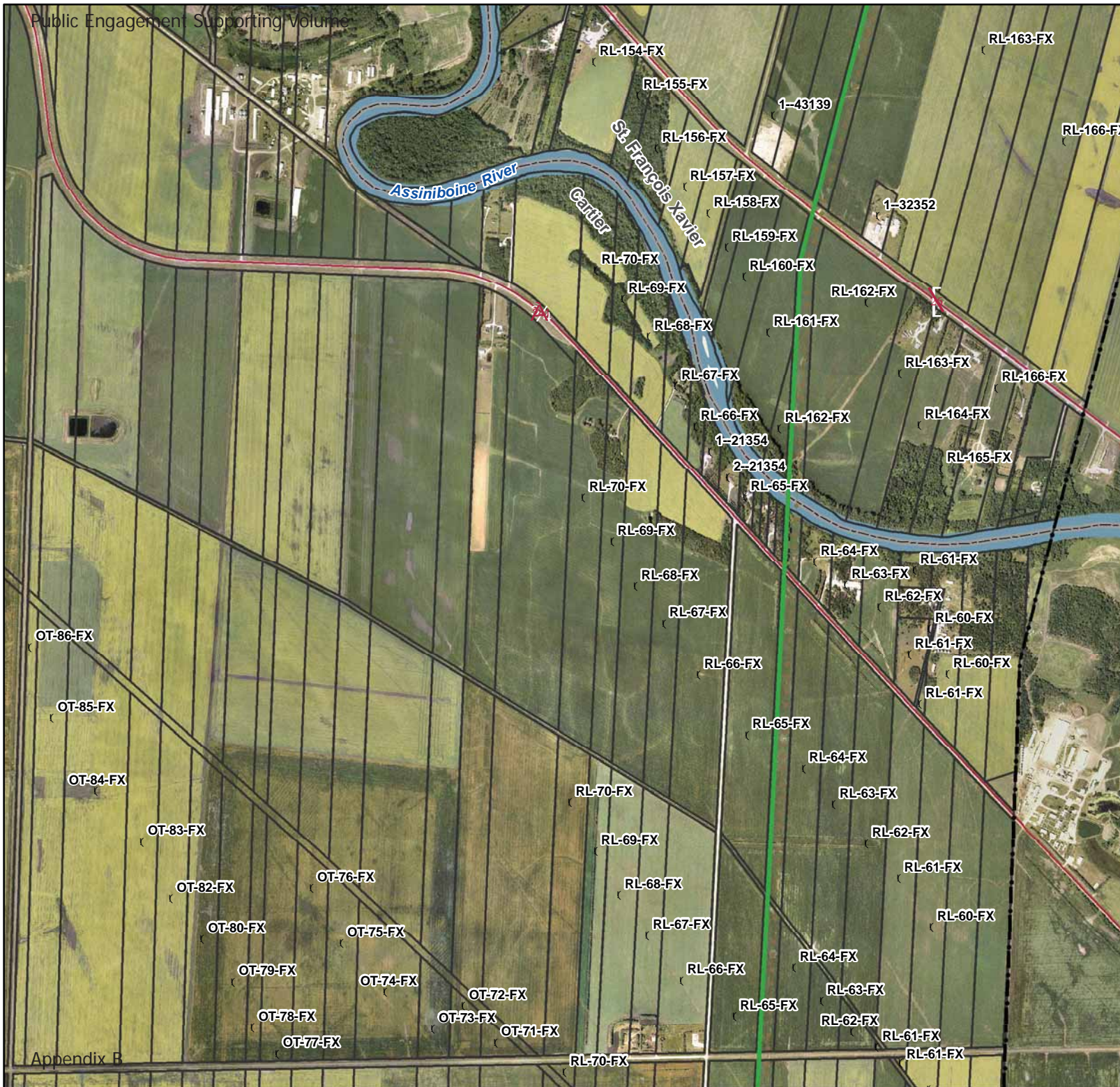
— Provincial Road

— Railway

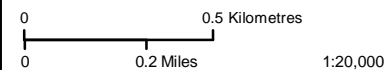
— Study Area

— Landowner Parcel

— Rural Municipality



Coordinate System: UTM Zone 14N NAD83  
Data Source: MBHydro, ProvMB, NRCAN,  
Stantec, WRCS  
Date Created: April 2, 2012



**Preferred Route  
Grid 13**

**D83P Transmission Project**

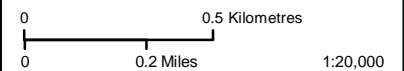
Project Infrastructure  
— Preferred Route

Infrastructure  
— Transmission Line

Landbase  
— Trans Canada Highway  
— Provincial Road  
— Railway  
— Study Area  
— Landowner Parcel  
— Rural Municipality



Coordinate System: UTM Zone 14N NAD83  
Data Source: MBHydro, ProvMB, NRCAN,  
Stantec, WRCS  
Date Created: April 2, 2012



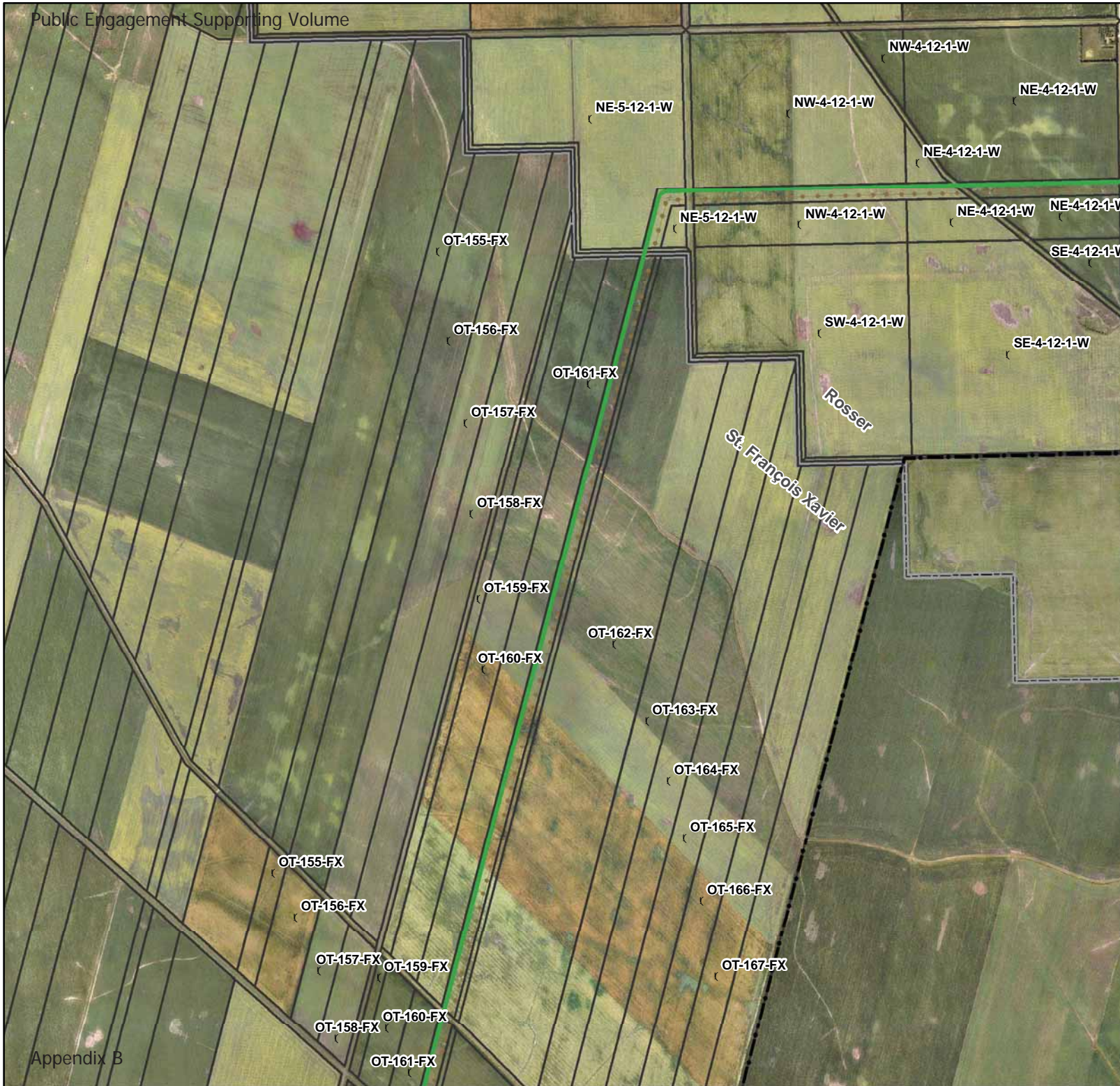
**Preferred Route  
Grid 14**

**D83P Transmission Project**

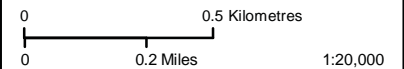
Project Infrastructure  
— Preferred Route

Infrastructure  
— Transmission Line

Landbase  
— Trans Canada Highway  
— Provincial Road  
— Railway  
— Study Area  
— Landowner Parcel  
— Rural Municipality



Coordinate System: UTM Zone 14N NAD83  
Data Source: MBHydro, ProvMB, NRCAN,  
Stantec, WRCS  
Date Created: April 2, 2012



**Preferred Route  
Grid 15**

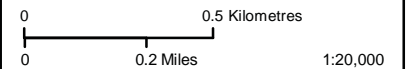


**D83P Transmission Project**

- Project Infrastructure**
- Preferred Route
- Infrastructure**
- Transmission Line
- Landbase**
- Trans Canada Highway
  - Provincial Road
  - Railway
  - Study Area
  - Landowner Parcel
  - Rural Municipality



Coordinate System: UTM Zone 14N NAD83  
 Data Source: MBHydro, ProvMB, NRCAN, Stantec, WRCS  
 Date Created: April 2, 2012



**Preferred Route  
Grid 16**

**D83P Transmission Project**

Project Infrastructure

— Preferred Route

Infrastructure

— Transmission Line

■ Converter / Transformer Station

Landbase

— Trans Canada Highway

— Provincial Road

— Railway

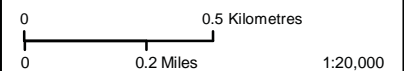
□ Study Area

□ Landowner Parcel

□ Rural Municipality



Coordinate System: UTM Zone 14N NAD83  
Data Source: MBHydro, ProvMB, NRCAN,  
Stantec, WRCS  
Date Created: April 2, 2012



**Preferred Route  
Grid 17**