

# Environmental Assessment: Surface Water and Sediments

## Management and Mitigation Measures

- Water supply regulated under existing *Environment Act* Licences/Water Rights Licences
- Wastewater treatment at Chisel Water Treatment Plant under existing *Environment Act* Licence and MMER
- Ore stockpile and conveyer belt will be covered to reduce exposure of ore to precipitation
- Fuel storage areas to be equipped with secondary containment
- Discharge from the Anderson TIA is controlled by the effluent quality requirements under the existing *Environment Act* Licence and MMER
- Dams at TIA will be engineered and constructed to minimize seepage
- Any seepage that occurs will be contained by a seepage collection system

# Environmental Assessment: Surface Water and Sediments

## Management and Mitigation Measures

- Tailings will be contained within the TIA
- Pipelines will be equipped with secondary containment and installed aboveground with sand mounded over top
- Any seepage that occurs will be contained by a seepage collection system
- Monitoring of water and sediment quality to continue to ensure the effectiveness of mitigation measures
- Trees will be removed from flooded area in TIA



# Environmental Assessment: Surface Water and Sediments



Anderson Creek with Anderson Bay in background

## Residual Impact

- No residual impact anticipated

## Preliminary Conclusion

- Negligible impact to surface water or sediment quality

# Environmental Assessment: Groundwater

## Existing Environment

- Shallow groundwater is at or near the ground surface
- Hydrogeological testing completed near the Lalor Deposit – no significant deep groundwater encountered at the site
- Water Resources Branch records indicate no domestic groundwater use within 5 km of site

## Potential Sources of Impacts to Groundwater

- Pipeline leaks
- Chemical/fuel leaks during construction or operation
- Seepage at Anderson TIA dams



Typical Fen/Bog Area in Lalor Region

# Environmental Assessment: Groundwater

## Management and Mitigation Measures

- Fuel storage to include spill containment and spill response kits
- Pipelines will be equipped with secondary containment and installed aboveground with sand mounded over top
- Dams at TIA will be engineered and constructed to minimize seepage
- Any seepage that occurs will be contained by a seepage collection system
- Regular inspection and maintenance of dams and pipelines will be undertaken

## Residual Impact

- No residual impact anticipated

## Conclusion

- Negligible impact to groundwater

Monitoring well at existing Anderson Dam



# Environmental Assessment: Aquatic Resources

## Existing Environment

- Baseline studies conducted in potentially affected waterbodies in May and September 2011 and June 2012
  - Fish and fish habitat, metal residuals in fish, phytoplankton and zooplankton and benthic invertebrates
- Anderson Bay and Snow Lake support a variety of fish species throughout the year
- Fishing effort did not capture fish in Nutt Lake, Stall Lake, Unnamed Lake 1, and Unnamed Creek 1
- Arm Lake, Threehouse Lake, Ghost Lake, Nutt Lake, Threehouse Creek, Ghost Creek and Tern Ditch were determined not to support significant fish populations (only Brook Stickleback were captured)
- Anderson Creek supports a variety of small-bodied fish species

## Potential Sources of Impacts to Aquatic Resources

- Supply of fresh water (from existing licensed sources)
- Wastewater generated from concentrator operations
- Changes in water quality at Anderson Creek
- Chemical/fuel leaks during construction or operation
- Seepage from dams at Anderson TIA

Pearl Dace from Anderson Creek



# Environmental Assessment: Aquatic Resources

## Management and Mitigation Measures

- Water supply regulated under existing Environment Act Licences/Water Rights Licences
- Wastewater treatment at Chisel Water Treatment Plant under existing Environment Act Licence and MMER
- Fuel storage areas to be equipped with secondary containment
- Water quality assessment underway at Anderson TIA. Water discharged from Anderson TIA into Anderson Creek will continue to meet regulatory requirements
- Seepage collection system will be installed at the dam sites
- Shoreline of Anderson TIA will be cleared prior to flooding
- Monitoring of aquatic resources to continue to ensure the effectiveness of mitigation measures

## Residual Impact

- No residual impact anticipated

## Conclusion

- Negligible impact to aquatic resources



# Environmental Assessment: Terrestrial Resources

## Existing Environment

- Terrestrial surveys undertaken in September 2007, July 2010, June 2011, September 2011, and June 2012
- Typical vegetation in Project Area includes: black spruce, jack pine and sphagnum moss
- Dense forest canopy limits understory growth
- Wildlife diversity in Project Area is low due to high density of forest canopy and limited diversity of vegetation
- Evidence of bear, coyote, fox, deer, timber wolf, otter, beavers, eagles, pelicans, crane, loons, frogs, moose and ravens observed in terrestrial surveys in the Project Area
- Woodland caribou known to occur in the Churchill River Ecoregion
- Project Site does not represent a unique or critical habitat for vegetation or wildlife species





# Environmental Assessment: Terrestrial Resources

## Potential Sources of Impacts to Terrestrial Resources

- Habitat fragmentation due to presence of infrastructure
- Loss of habitat due to clearing and flooding
- Improved predator access due to access road/clearing
- Vehicle collisions with wildlife
- Noise may deter wildlife from the Project Area
- Dust generation and deposition on vegetation



Typical mixed woods on rock outcrop environment

## Management and Mitigation Measures

- Hubbay is participating in Manitoba Conservation's ongoing large scale caribou study in northern Manitoba (which includes the Lalor Project Region) Minimal clearing is planned for the project as construction will occur primarily on existing developed areas
- Site speed limits imposed to minimize animal strikes
- Traffic and Noise study currently underway
  - Mitigation measures will be developed to minimize noise and traffic impacts to wildlife
- Dust control as required

# Environmental Assessment: Terrestrial Resources

## Residual Impact

- Preliminary conclusion: No residual impact anticipated on terrestrial resources
- Potential noise impacts to be confirmed upon conclusion of noise/traffic study

## Conclusion

- Negligible impact to terrestrial resources



Beaver in Lalor Region

# Environmental Assessment: Resource Use

## Existing Environment

- Regional resource users include: trappers, cottages and remote residences, lodge owners, snowmobilers, forestry, and fisheries users (recreational and commercial)
- Cottages and remote residences at Anderson Bay, Berry Bay, Taylor Bay, Bartlett's Landing, and Cook Lake
- Lodges/inns located in the Project Region
- 2 registered trap lines in the Project Area
- No First Nation communities located within the Project Region



## Potential Sources of Impacts to Resource Use

- Noise effects on cottagers
- Noise effects on trap lines
- Access to trap lines
- Noise and access to hunting and fishing areas
- Recreational access



# Environmental Assessment: Resource Use

## Management and Mitigation Measures

- Consultation with trap line owners to minimize potential impacts
- Noise and traffic study underway
  - Mitigation measures will be recommended to minimize noise and traffic impacts to wildlife and human receptors

## Residual Impact

- Preliminary conclusion: No residual impact anticipated on any resource that could be used for trapping, fishing, hunting, camping or cottage use in the Project Region (to be confirmed upon conclusion of the noise assessment)

## Conclusion

- Negligible impact to resource use anticipated



# Environmental Assessment: Heritage Resources

## Existing Environment

- Provincial Historic Resources Branch records do not indicate any historic or heritage resources at the Project Site
- Project Site is within limits of existing approved development

## Potential Sources and Impacts

- None, as no historic or heritage resources anticipated at the Project Site
- Closest documented resources are located outside the Project Area



Petroglyphs at Tramping Lake

# Environmental Assessment: Resource Use



## Management and Mitigation Measures

- None required

## Residual Impact

- No residual impact anticipated

## Conclusion

- Impact to heritage resources is expected to be negligible

# Environmental Assessment: Traffic and Noise

## Traffic

- Assessment of traffic volumes and potential impacts to existing transportation infrastructure currently underway

## Noise

- Assessment conducted for Lalor Mine. Follow-up assessment to address concentrator will occur August/September 2012
- Assessment includes: crushing, blasting, generator, exhaust fans and vehicle noise
- Based on findings from Lalor Mine noise assessment and the isolated nature of site and surrounding vegetation, negligible noise effects to wildlife and human receptors expected
- Engineered controls will be installed at potential noise-producing structures
- Operational controls will be implemented as a mitigation measure if required

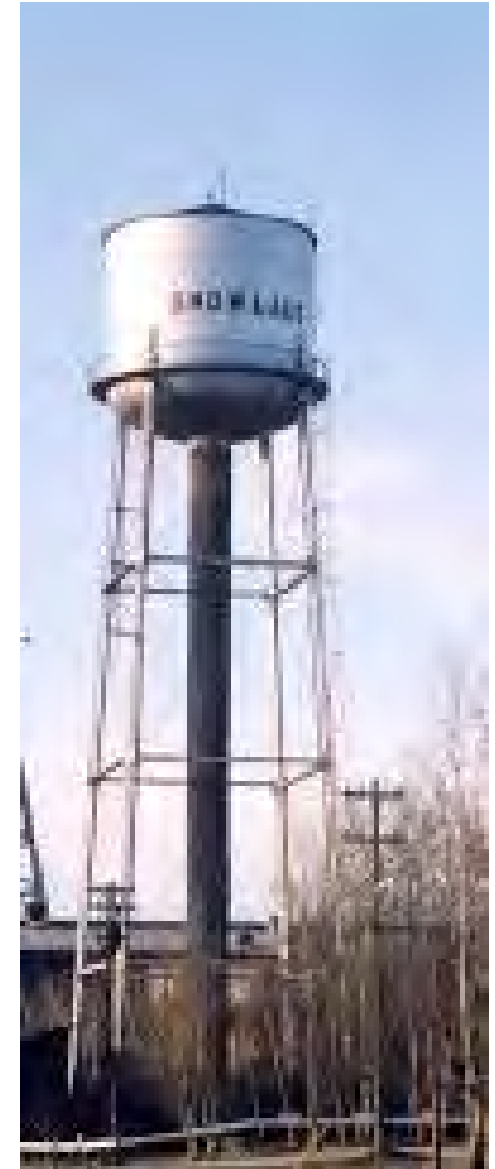
# Environmental Assessment Conclusions

- **Surface Water and Sediments**  
Negligible impacts anticipated
- **Aquatic Resources**  
Negligible impacts anticipated
- **Terrestrial Resources**  
Negligible impacts anticipated
- **Groundwater**  
Negligible impacts anticipated
- **Heritage Resources**  
Negligible impacts anticipated
- **Resource Use**  
Negligible impacts anticipated
- **Traffic and Noise**  
Study underway. Negligible noise effects to wildlife and human receptors expected



# Socio-Economic Benefits

- Town of Snow Lake located 18 km by road from Concentrator site
- Population of 723 (2011 Census)
- No permanent camps will be located at the Concentrator site
  - Housing in Snow Lake will be required to support the project
- Lalor Concentrator will employ approximately 70 full-time employees, a majority of whom will be employees currently working at the Stall Lake Concentrator.



# Socio-Economic Benefits

- Any additional staffing requirements will be fulfilled from the Town of Snow Lake, City of Flin Flon and/or neighbouring communities to the extent possible
- Business activity expected to be sustained or augmented
- Concentrate produced would be processed at the Flin Flon metallurgical complex, providing additional socioeconomic benefit



# Closure Planning

- Hudbay has successfully completed reclamation on many mining operations across Canada, with several of these sites located in the Snow Lake region
- The area will be returned, to the extent possible, to its natural state following the procedures outlined in Manitoba *Mine Closure Regulation 67/99*



Konuto Lake Mine  
(Post Closure)

# Closure Plan

## Tasks to be included in the Lalor Concentrator Closure Plan:

- Removing all buildings and foundations
- Removing and appropriately disposing any stockpiled rock
- Removing and appropriately disposing any miscellaneous infrastructure such as power lines, generators, transformers, pipelines pumps, water storage tanks, etc.
- Removing and appropriately disposing site refuse
- Scarifying the access road
- Removing all fuel storage tanks
- Testing, removing and/or remediating any contaminated soils
- Re-grading and contouring stockpile pads, concentrator haul road and parking area
- Re-vegetating disturbed areas in order to restore landscape to the extent possible to their native appearance

# Closure Plan

Anderson TIA Closure Plan will continue to include:

- Maintenance of sufficient water cover over deposited tailings
- Maintenance and inspection of control structures and seepage collection system
- Post-closure water quality monitoring

Financial assurance will cover post-closure maintenance and monitoring costs

# Next Steps

- Environmental assessment is in progress
  - Feedback from this Open House will be included
  - Completion targeted for Fall 2012
- Hudbay plans to submit an Environment Act Proposal to Manitoba Conservation in Fall/Winter
- Manitoba Conservation will advertise and make the Environment Act Proposal and Environmental Assessment report available for public review

- Construction will take place only after regulatory approval has been obtained (target date for construction is from February 2013 to September 2015)
- Operation is expected to take place between September 2014 to 2027 (based on known reserves)
- Closure Phase anticipated to start upon depletion of known reserves



# Future Project Planning

- Potential expansion of Anderson TIA (Phase 2 and Phase 3)
- Potential Addition of Gold Plant to the Lalor Concentrator
- Reed Copper Project
- New Waste Disposal Ground (Landfill)



# Comments and Questions

- The project team wants to hear from you
- Please take the time to complete a questionnaire and submit any comments on the forms provided

AECOM - Clifton Samoiloff

Phone: 204-477-5381

email: [Cliff.Samoiloff@aecom.com](mailto:Cliff.Samoiloff@aecom.com)

Hudbay – Stephen West

Phone: 204-687-2229

email: [steph.west@hudbayminerals.com](mailto:steph.west@hudbayminerals.com)

Hudbay – Jay Cooper

Phone: 204-687-2667

email: [jay.cooper@hudbayminerals.com](mailto:jay.cooper@hudbayminerals.com)

# Lalor Concentrator Project

Public Open House  
 Snow Lake Community Hall  
 August 8, 2012

Sign-In Sheet		
Name	Organization	Contact Information (Optional)
SOMIA SADIQ	AECOM	Somia.sadiq@aecom.com
CLIFF SAMOILOFF	AECOM	Cliff.Samoiloff@aecom.com
Al Trotter	Hudbay	
JOE NILSEN	HUDBAY	
Stephen West	Hudbay	Steph.west@hudbayminerals.com
Tony Butt	"	
Tony Summers	"	
JAY COOPER	HUDBAY	Jay.Cooper@hudbayminerals.com
Kare Hoover	"	Kare.HOOPER@HUDBAYMINERALS.COM
Judith Stever		
Sandra Hoover		
W. Jacob	Snow Lake	

# Lalor Concentrator Project

Public Open House  
 Snow Lake Community Hall  
 August 8, 2012

Sign-In Sheet		
Name	Organization	Contact Information (Optional)
Vi Wood	SNOWLAKE	
C. Ferguson	SHRES	-
Paul Hummer	-	
Bruce Church	Snow Lake Pres	
Debra Green	S.C.	
Viktor Lazear	Town office	
Keith Scott		
Russell Bartlett	Snow Lake - Trapper	
Ted Stabback	Snow Lake	
Marc Jackson	Snow Lake	

# LALOR CONCENTRATOR PROJECT

Public Open House  
Snow Lake Community Hall  
August 8, 2012

## COMMENT SHEET

Contact Information (Optional):

Name: Judy Steeves Phone Number: 358-2472

Address: \_\_\_\_\_

e-mail \_\_\_\_\_

Location: (Relative to the Proposed Project):

\_\_\_\_\_  
\_\_\_\_\_

Do you have any concerns about the proposed Lalor Concentrator Project?

Yes  No

If so, what are your concerns?

\_\_\_\_\_  
\_\_\_\_\_  
\_\_\_\_\_  
\_\_\_\_\_  
\_\_\_\_\_

Do you use the Project Area for any activity that you feel could be affected by the project?

Yes  No

If yes, would you please describe your activity and where you carry it out?

\_\_\_\_\_  
\_\_\_\_\_  
\_\_\_\_\_  
\_\_\_\_\_



# LALOR CONCENTRATOR PROJECT

Public Open House  
Snow Lake Community Hall  
August 8, 2012

## COMMENT SHEET

Contact Information (Optional):

Name: Judy Steeves Phone Number: 358-2472

Address: \_\_\_\_\_

e-mail \_\_\_\_\_

Location: (Relative to the Proposed Project):

\_\_\_\_\_  
\_\_\_\_\_

Do you have any concerns about the proposed Lalor Concentrator Project?

Yes  No

If so, what are your concerns?

\_\_\_\_\_  
\_\_\_\_\_  
\_\_\_\_\_  
\_\_\_\_\_  
\_\_\_\_\_

Do you use the Project Area for any activity that you feel could be affected by the project?

Yes  No

If yes, would you please describe your activity and where you carry it out?

\_\_\_\_\_  
\_\_\_\_\_  
\_\_\_\_\_  
\_\_\_\_\_



# LALOR CONCENTRATOR PROJECT

Public Open House  
Snow Lake Community Hall  
August 8, 2012

## COMMENT SHEET

**Contact Information (Optional):**

Name: \_\_\_\_\_ Phone Number: \_\_\_\_\_

Address: \_\_\_\_\_

e-mail \_\_\_\_\_

**Location: (Relative to the Proposed Project):**

---

---

**Do you have any concerns about the proposed Lalor Concentrator Project?**

Yes  No

If so, what are your concerns?

---

---

---

---

---

---

---

---

**Do you use the Project Area for any activity that you feel could be affected by the project?**

Yes  No

If yes, would you please describe your activity and where you carry it out?

---

---

---

---

---

---





## Lalor Concentrator Information Session Snow Lake

DATE OF MEETING : Aug 8, 2012

TIME OF MEETING : 7:00 pm

### Questions

- This list of questions is paraphrased and may omissions as transcribed.

NO.	Question
1	<p>Q - I've heard the mine now is roughly 15 years and any new business that wanted to start up in Snow Lake that are trying to borrow money to start the business any banks don't want to look at anything just for 15 years. Is there anything in the near future or in drill for the last year or so that could extend the life of this mine so people may be able to inform the banks that it would be more then 15 years. Is there anything in the future like that?</p> <p>A – Once they are back underground they do intended to do further drilling deeper down but until they get down the shaft and do the later development and tie in the ventilation it will be a while before they drill deeper. Anything in the gold will have to be cultured drill holes that they do from the surface and then there is a known copper zone that needs further definition. There is plan for further drilling but is not going to happen in the next little while. I do know there are a lot of juniors in the area drilling but I really couldn't speak to any success they may be having or possible leads. The only other one we have is the Reed. So right now it is about the maximum 15 years</p>
2	<p>Q – Have you got the outline of the (Lalor) Ore Body?</p> <p>A – They know the outline of the upper area of the ore body but the lower body still needs still needs further definition. We can only do that drilling once we get down deeper.</p>
3	<p>Q - You talked about a landfill is that a landfill for the community or is that a landfill for Hudbay use only?</p> <p>A – It is a landfill for Hudbay use we have a couple of license disposal facility's one at the Stall Concentrator and one out at Chisel. We would like to develop a more modern one in the area around Lalor. We have been doing surveys in the last 3 years they did some drilling and have zoned in on one spot which happens to be just past the photo site toward the Chisel Lake area.</p>
4	<p>Q – What type of materials would be in the landfill there?</p> <p>A – It would be mine garbage; we of course would practice recycle. We are looking at the sewage plants so we can have sludge pits versus hauling that waste the way we are now. We are still doing the soil test work and just looking into the design</p>

	end we have to include when we submit the proposal.
5	<p>Q – Is Hudbay trucking ore up (Lalor Ramp) right now?</p> <p>A – No not from Lalor. There is a ceremony scheduled for Aug 14, 2012 were they will bring a bit up the vent raise but they are still a ways from real production out of those areas. What you may have heard is they blasted a couple rounds of ore but there is nothing coming up to surface yet.</p>
6	<p>Q – What is going to happen to the existing concentrator site when you shut it down?</p> <p>A – It will be put on care and maintenance, but again we have got to first build this one. There is still work to be done there.</p>
7	<p>Q – The concentrator pipeline is going to run right through part of my trap line, I am concerned with the noise factor while the construction is going on. I trap that on a regular basses and while the construction is going on I won't be able to get into that area. How long do you anticipate the construction of the pipeline?</p> <p>A – We have not set the timeline for start of construction or exactly how long it takes. Certainly start to finish the construction of the pipeline is going to be a number of months typically are during the spring summer and fall that we will be doing that. Because we have not figured that out yet we can't tell how long it will be. You do have winter to trap. Hudbay could make some accommodations and try to work around your trapping schedule the best we can.</p>
8	<p>Q – If you can share this publicly water daily consumption or collection that you will be pumping from Snow Lake and if any studies have been done regarding water sources here for the future of 20 to 25 years ahead.</p> <p>A – We think looking at the numbers roughly 40% of the water that is used today will be used in the future roughly that would be 150 gallons per minute coming from Snow Lake. Presently 450 gallons per minute is being used. I think last year we used 789 thousand cubic meters and plans are to use 290 thousand cubic meters. As far as 25 years outlook we don't have any plans to utilize any other water sources for the concentrator other then the existing pump house at Snow Lake. As well as reprocessing water from Anderson which is very similar to today but at a higher capacity. We have identified through testing other water bodies in the area that could be used as potential water sources in the future.</p>
9	<p>Q – How many pound of dust per day will be exposed to the area and any emission controls you are taking now during this project?</p> <p>A – The potential dust generators in this operation are the conveying, stockpiling and the crushing of ore. What we are doing is the ore will be pulled from the bin in the headframe onto 2 conveyers that are covered. They will take the ore to the Jaw Crusher. The Jaw Crusher is inside a building and the building is equipped with wet scrubber for a dust collection. The crushed</p>

	ore will then be conveyed to a stock pile that is going to be to the North of the Mill building we are going to cover the stock pile with a building or coverall to prevent dust from escaping from the pile. Then from there it is conveyed into the Mill. What we are doing to control the dust is to contain it; cover the stock pile and use dust covers whenever we need to within the building.
10	Q - The Lalor vent raise is it making water? A – It is making very minimal water from the bottom.
11	Q – In the Lalor Main shaft did you hit water on the first hole? A – No it is only down 200 meters and the design of that going down they will be grouting all the way.
12	Q – The fresh water down in the mine to run the equipment is that going to be from Snow Lake? A – No it comes from Chisel Lake.
13	Q – What are the guys going to drink underground are they going to have to carry a water bottle down there? A – They take water down.
14	Q - The Con Haul at 4500 tones per day how many trips con are going down the highway? A – Roughly speaking we are going to be making about 400 tones of zinc concentrate a day plus or minus so that's about 12 trucks a day. With copper concentrate is typically much less then that it could be as much as 4 or 5 trucks a day so 17 trucks a day.
15	Q – It was mentioned the dam is going to be 5 meters high phase one. Have you come up with a dam design that has something better for fish, oxygenating the water and making sure we release something into the creek and Anderson Bay that is beneficial to the fish? A – The main point of the dam is to basically raise water level to allow for the dams definition. The five meter site allows us are water cover and for what is called a probable maximum precipitation event. This is a rain storm in the area of 600mm or 2 feet in a 24hr period and a large wind storm an absolute deluge of water plus a very windy so that the wind blows over top. That is why the height is there. The new spillway design will incorporate some sort oxygenating system for when we release water we really haven't worked out that type of detail. We have done studies in Anderson Creek and try to test as much as possible but the main process of the design at this point is just for holding back water and containment definition. With this much improved pump system in the spring time we will be able to control the flow of the release water from the dam so it

	<p>wouldn't necessarily have oxygen depleted water. We have had much better ability to control that and release the water properly and deal with it. As well the spillway allows the opportunity to oxygenate the water before we release it. Although the designs are very crude the not necessarily at this point looked at for fish habitat it does cause a lot more operational ability as study this year to be releasing oxygenated water in the spring.</p> <p>The key is to be able to hold it without a discharge until the ice is off and then add the oxygen. The new structures going up are going to give us the flexibility to hold back water until the ice is off the lake and it wont be an oxygen problem.</p>
16	<p>Q – Is Hudbay aware the local resource group is going to be looking at all spawning areas that keep Wekusko Lake and Anderson Lake.</p> <p>A – Yes we have done some work at Anderson Creek and found that the fish habitat is quite good. In-fact we did find a type of fish there that is there only because of Anderson. The treated environment is affecting the habitat for that species. The field studies show that there really isn't a significant impact as it is right now on Anderson Creek, from the perspective of a water quality.</p>
17	<p>Q – Is Hudbay going to cut down the forest that is along the lake or are they just going to let it flood?</p> <p>A – Hudbay is not going to let it flood. We will cut back the area we think it will flood to. You don't want to have tree stumps sticking out of the water, it is best to take it out first and clear up all the brush. You end up with that flow loosely to your sill and you're picking it up anyway so we prefer to do take it down.</p>
18	<p>Q – When they floods an area like that with all the branches, limbs and stuff like that does that put mercury in the water?</p> <p>A – It has been a potential at hydro powered dams when they flood that you do get the organic mercury it's not the same as in mining in a pit mercury. You can get minor levels when you flood back but I know we are not flooding like a hydro dam with miles and miles we are only talking a very small area of the shore line and a good portion of the shore line around Anderson is rock face.</p>
19	<p>Q – If there is mercury is it going to get into Wekusko Lake?</p> <p>A – First thing that has to happen it has to be released out of the organics and there are not al lot of organics in the area. So I don't think it will be an issue at all.</p>
20	<p>Q – When does Hudbay plan to start cutting the forest out?</p> <p>A – We can't do anything until we have environment approval. After that we start looking at the flood lines make sure we have all the titled land in areas that we need. Then we will start and the best time to do this is the winter due to the terrain. It takes</p>

	<p>time to get land titles.  Within phase 1 of Dam construction for the entire flooded area if you take the number of years we are anticipating less then 100 hectors of wetted area. Between today and lets say 2017 we most likely clear roughly 100 hectors.</p>
21	<p>Q – Is the road being built (392) going to be the new dam?  A – That is not going to be part of the dam. It is just relocating the highway of to the right. The dam is going to be toward the existing dam in that area moving out.</p>
22	<p>Q – Are you going to have to run the dam all the way down the old highway?  A – We have done all the topo maps and got the elevation so we are just following the elevation that we need. Reference to slid with map of road and dam.</p>
23	<p>Q – What is the elevation on the South West side of Anderson above the water?  A – 277.7 meters above sea level. When we looked at phase 3 the water level comes up 7.3 meters. The elevation runs flooding back in the opposite direction the natural tendency is for it to come in the same direction regardless of the elevation the dams are at.</p>
24	<p>Q – Is the new concentrator going to make gold in Snow Lake or is it going to have to be go to Flin Flon?  A – The gold will be in the copper con and it will be shipped to Flin Flon. As of today no gold will be processed in Snow Lake but that is part of future possibilities if it makes economic sense.  The nature of the process is that we recover about 65% of gold in the copper concentrate and when we sell that copper concentrate we get paid for that gold. The rest of the gold is actually quit difficult to recover by floatation and in future when we look at the gold plant the gold plant will be extracting gold tailing from the past fill plant. That is in the future and we are not there yet.</p>
25	<p>Q - What is Hudbay going to build that dam out of clay, crushed rock, or limestone?  A – All of the above; clay, crushed rock and limestone. With an impervious clay core to minimize seepage. Reference to slide showing dam cross cut.</p>
26	<p>Q – When you build the dam and you dig into the clay don't make a pond if the beavers get in there the government has to take them out. This costs us (residents) mega dollars.</p>

	<p>A – The tendency of using the clay core is to produce a water body in the area. Part of the original design and all the geotechnical work that was done in the area has allowed us to find clay close to the existing structure as well as rock building type material. So we believe that in very small radius of existing dams we have enough clay and rock building material.</p>
27	<p>Q – Is Hudbay going to guarantee us (Snow Lake residents) the dam is not going to leak?</p> <p>A – There is a seepage collection system and modular monitoring of the dams. It will be built on very tight guidelines as far as engineering controls, quality controls and quality assurance.</p>
28	<p>Q – Is Hudbay going to use mettle culverts?</p> <p>A – Presently there is a pipe that allows controlled flow and renewed control structure utilizing a concrete spillway. The existing pipe has been in place since 1979 and it is still in really good shape. The plan is to plug of that pipe and just use the clay core as well as the concrete spillway so there won't be any steel pipes in the new structure.</p>
29	<p>Q – Are we loosing the Skidoo trail on the rail bed?</p> <p>A – Quite possibly. We are going to definitely be looking at it there. We know that until we get the detail on the pipelines going across. We have to look at it from a risk once we start opening up there are several crossing of creeks we have to go through and depending on how that rail bed is developed with the pipelines there may not be much room we would want to, but we may have to look at working with the Snow Mobile Club to go elsewhere.</p>

## Sweet Nothings



Please see us for giftware, souvenirs, jewelry, computer parts and service, baby and bath items, flowers, pictures, and the work of a variety of local artists, artisans, musicians, and writers.

Open Tuesday to Friday from 12:00 to 5:00 p.m., Saturday from 10:00 a.m. to 4:00 p.m. Phone: 358-7659, FAX: 358-9669



Commstream  
Communications Inc.

Providing business and residential High Speed Wireless Internet service to Snow Lake and the surrounding area.

Packages start as low as \$34.95. Give us a call today and find out how we can hook you up with lightning fast High Speed Internet!

Call toll free at 1-866-206-3707, E-mail: webmaster@commstream.net, or see our web page: www.commstream.net

\$1.00



# THE

# UNDERGROUND PRESS

P.O. Box 492, SNOW LAKE, MANITOBA, R0B 1M0

Volume 16, Issue 17

Snow Lake, Manitoba

August 16, 2012

Did you  
Know?

- That should the cross country ski trails accessed from the bush near the Hydro substation be left inaccessible, the town will look at keeping the road to the Ski Chalet open in the winter, in order for skiers to use the trails situated around it. Councilor Chris Samborski advised that he will see that the item is placed on the agenda at the first Public Works Committee meeting in the fall.
- That there are only 1598 days until Snow Lake's 70th Anniversary and 3423 days until Snow Lake's 75th Anniversary.
- That the Snow Lake Motor Inn is only closed for three days out of the year? Christmas Day, Good Friday, and Easter Sunday!
- That former resident Walter and his wife Marie Szumilak are still working on the hybridization of a new Day Lily that will be named for Kate Rice. Walter says that he has several seedlings that show distinct possibilities and that he hopes to narrow it down to a finalist by next summer. He has asked that I be involved in the final selection, so I'll do my best to pick one that will bear justice to our Lady of the Lake!
- That first ore at Lalor was brought to surface on Tuesday, August 14th and the ribbon was cut on the Reed Copper Project later that same afternoon? Watch for stories on both in the next edition.
- That the Snow Lake Mining Museum is marking out a scaled down mining claim in the bush behind their building. At some point in the future, they will invite youngsters to come out and experience what it would be like to stake a claim. Another great idea from the folks who work hard to preserve our heritage! MJ

## Hudbay holds second information session



Main Photo (R): Jay Cooper, Cliff Samoiloff, Stephen West, Karl Hoover, Joel Nilsen, and Vania Hardy.  
Inset: Chisel North Water Treatment Plant ~ photos by Marc Jackson

For the second time in as many months, representatives of Hudbay (accompanied by AECOM on this occasion) were in Snow Lake to host an information session on the environmental licencing, construction, and eventual commissioning of their Lalor Project Concentrator.

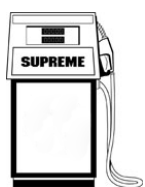
The gathering was held on the evening of August 8<sup>th</sup>, in the Lawrie Marsh Community Hall. As was the case with the previous assembly, held June 26<sup>th</sup>, many of the chairs were empty, but those in attendance were vocal and confirmed their interest in the project during the question and answer session that closed out the presentation.

Hudbay's Assistant Superintendent of Environmental Control, Jay Cooper initiated the presentation. He introduced colleges in attendance who were: AECOM's Manager, Environment, Health and Safety Consulting, Cliff Samoiloff; Project Manager for the Lalor Concentrator, Karl Hoover; Section Leader of Hudbay's Air and Water Programs, Joel Nilsen, Hudbay's Superintendent of Environmental Control, Stephen West, Hudbay's Vania Hardy, and AECOM's Lead

Assessor Somia Sadiq.

Cooper began by giving an overview of Hudbay's activities in the area since the late 1950's and a summary of timelines in respect to the development of the Lalor Project. Following Cooper, Karl Hoover recapped the rationale for the Lalor Concentrator, as well as much of the information that was presented to those attending the June meeting. Both men referred to the numerous poster boards set up around the perimeter of the hall and invited attendees to view these at the conclusion of the presentation to further study topics that were cited.

This time around, Hoover did provide a little more insight into the Concentrator Facility itself; noting that the main concentrator building will include a crusher annex, back-up diesel generator annex, offices, a control room, laboratories, change houses and washrooms, a warehouse, maintenance shops, a concentrate loadout facility, and will make use of the onsite sewage treatment plant. He also reiterated the fact that traffic in the area will be reduced as a result of the mill's location at the Lalor site, in *See HUBBAY on page 4...*



Franals Snow Lake Service

Open 6:00 a.m. to 9:00 p.m.  
Convenience, Fuel, Movies, Etc.



Friendly Korner Restaurant

Hours - Open from 6:00 a.m. to 2:30 p.m.

Where friends meet - Lunch specials daily - We now have WiFi!

CORNERVIEW ENTERPRISES

Store hours: 6:00 a.m. - 8:00 p.m. Mon. - Fri,  
6:00 a.m. - 6:00 p.m. Sat, 12:00 p.m. - 6:00  
p.m. on Sunday \*\*Closed for all holidays\*\*



Groceries, Fresh Meat, Dry Goods,  
Books, M.L.C.C.; we have a little bit of  
everything!



## Another successful Pioneer Days weekend at Herb Lake Landing



*Herb Lake Landing residents and Pioneers. BACK (L): Al McDougall, Freda Hiebert, Margo McDougall, and Hazel Corman. FRONT (L) Don Hiebert and Jim Corman ~ photo and story courtesy of Cathy Stabback*

Pioneer Days began Friday of the August long weekend with a Treasure Hunt. This was a new event organized by veteran activity coordinator, Dawn Roberts. Clues were scattered throughout the community and one clue lead to the other, by following Herb Lake Landing historical hints. At each stop a letter of the alphabet was collected. At the conclusion, the letters had to be unscrambled to reveal the message 'Let the games begin'. Six teams enjoyed taking part in this new event.

Saturday morning the entire community woke to the sound of Jim Corman's air horn. Everyone made their way to the Gathering Place for the annual pancake and sausage breakfast, cooked by veteran cooks Al McDougall, Blaine Spencer, and Sharon Boruck. After breakfast teams were made up of all those interested in participating in the two day Horseshoe Tournament. The tournament commenced at 10:00 a.m. sharp, along the beach. This has always been a popular event, and this year was no exception, 24 teams participated.

The wind wreaked havoc with the lake, therefore Davey Roberts' canoe races and canoe jousting events were postponed to the following day. Ladder Ball, Viking, Chess, Frisnok (a.k.a. Beersbee) kept some busy throughout the afternoon, until the fire pits were lit and wieners were roasted for supper. This was followed by the cutting and serving of the 95<sup>th</sup> Anniversary cake. This year the cake was made by Hazel Corman and decorated by her grand-daughters Shannon

Bartlett and Ashley Wootton.

The events for Saturday concluded just before midnight, with a walk through the 'Courage Trail', this year laid out by Blaine and Darwin Spencer. Sixty-eight courageous people walked through the bush and over rough terrain; everyone returned safely. This was followed by stories of courage and survival as everyone gathered around the bonfire upon their return from the trail.

Peter Roberts serenaded everyone with a few of his favourite songs, before day two of Pioneer Days come to a close. Once again the community was awakened before 8:00 a.m. on Sunday by Jim Corman, and once again that was our cue to head down to the Gathering Place for another breakfast of pancakes and sausages. This time pancakes were cooked by Brad Spencer, while Al took care of the sausages.

The Horseshoe Tournament reconvened shortly after ten. At its conclusion, Peter Roberts and Lynden Kucharyshen were crowned champions. The wind continued, therefore the Canoe Races and Canoe Jousting were cancelled. This was unfortunate, because we had some newly designed jousting sticks that we wanted to try.

The afternoon continued with more Ladder Ball, until the Tug of War rope and Smoosh Race boards were brought into the mix. Young and old participated in various games of tug of war. The grand finale tug of war was the fifty and over against the thirty and under. The fifty and over were victorious because of its 'Old Man Strength'

and perhaps a few extra people. Those who were adventurous strapped on the Smoosh boards to race across the grass. Soon after, those who didn't think they were adventurous were strapping on the boards to give it a try. The next event was the highly anticipated Potluck supper.

Everyone grabbed their steaming casserole dishes and simmering slow cookers and headed to the Gathering Place. More tables were moved in until there were enough places to seat 84 people. Margo McDougall said grace before the feast was

*See PIONEER on page 4...*

### CLARENCE PETERSEN MLA FOR FLIN FLON CONSTITUENCY



Constituency Office:  
24 Main Street, P. O. Box  
331, FLIN FLON, MB  
R8A 1N1  
Phone: 1-204-687-3367  
Fax: 1-204-687-3398

Constituency Office Hours:  
9:00 a.m. - 12:00 p.m.  
and 1:00 p.m. - 4:00 p.m.

Legislature Office:  
Room 234, 450 Broadway,  
WINNIPEG, MB  
R3C 0V8  
Phone: 1-204-945-3710  
Fax: 1-204-948-2005

## Thank you...

*To everybody at the South End for a great weekend at Pioneer Days. Special thanks go out to the Cormans, Butlers, McDougalls, Stabbacks, Roberts', and anybody else who volunteered to host the event. It was well worth the trip!*

*~ Morgan Cann ~*

### HUBERDEAU COGGAN ROBBINS LLP Barristers and Solicitors

2<sup>nd</sup> Floor, 436 Thompson Dr., N., Thompson, MB., R8N 0C6

"For all of your legal needs"

Alain Huberdeau of Huberdeau Coggan Robbins LLP will be accepting appointments at the Senior Centre in Snow Lake, Manitoba, on the following dates:

- August 17<sup>th</sup>, 2012;
- September 28<sup>th</sup>, 2012;
- October 26<sup>th</sup>, 2012; and
- November 23<sup>rd</sup>, 2012.

Limited appointment space available. Please contact Brittany at 1-204-677-2366 to book your appointment.



### ad policy and rates

#### Ad Policy:

The Underground Press shall not be responsible for any loss or damage to any advertiser or third party resulting from any error or omission in any advertisement at any time. Advertising is accepted on the condition that, in the event of typographical error, the advertising space occupied by the incorrect item will not be charged for. In the event of a typographical error that has advertised goods or services at the wrong price, goods or services don't necessarily have to be sold, as advertising is merely an offer to sell, and may be withdrawn at any time.

Advertisers are responsible to check their ads. Claims for adjustment are limited to errors appearing in the first insertion only. The Underground Press reserves the right to delete any words or phrases deemed by the publisher to be objectionable or refuse to publish any advertisement.

#### Rates

Line Rate: \$0.25 per line (14 lines per column inch)

Business Card, 4" x 2", 56 lines: \$14.00  
Sixteenth Page, 4" x 2.5", 70 lines: \$17.50

Thirteenth Page, 4" x 3.5", 98 lines: \$24.50  
Eighth Page, 4" X 5", 140 lines: \$35.00

Sixth Page, 6" x 5", 210 lines: \$52.50  
Quarter Page, 6" x 7" or 8" x 5 1/4", 294 lines: \$73.50

Third Page, 6" x 9", 378 lines: \$94.50  
Half Page, 10" x 8", 560 lines: \$140.00  
Full Page, 10" x 16", 1120 lines: \$280.00  
Back Page, 10" x 16", 1120 lines: \$336.00

\* 5% GST added to all rates and subscriptions

**Deadline for all advertising is Monday at 5:00 p.m. for that week's edition.**

Make all cheques payable to:  
**The Underground Press**  
PO Box 492,  
Snow Lake, MB. R0B 1M0

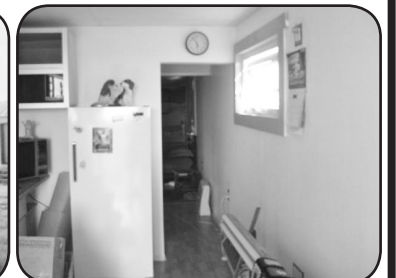
PLEASE NOTE, *THE UNDERGROUND PRESS* DEADLINE IS 5:00 PM ON THE MONDAY BEFORE PUBLICATION - NO EXCEPTIONS.

Publisher and Editor, Marc Jackson



The Underground Press  
P.O. Box 492,  
Snow Lake, MB.  
R0B 1M0  
editor@undergroundpress.ca

## Cottage for sale!



TWO YEAR OLD COTTAGE FOR SALE... MUST BE MOVED. BUILDING MEASURES 9 FEET WIDE BY 36 FEET LONG (6 INCH WALLS), 8 INCHES OF ROOF INSULATION (AVERAGE WINTER HYDRO BILL, \$58), ALREADY ON A MOVING TRAILER. COTTAGE HAS ALL THE LIVING AMENITIES, HARDWOOD FLOORS, FULLY FURNISHED, ALL APPLIANCES, WHIRLPOOL BATH, SELF-CONTAINED. GREAT FOR 1 OR 2 PEOPLE. \$32,000.00 TRAILER INCLUDED. \$25,000.00 WITHOUT TRAILER.

CONTACT: GARRY BOSCHMAN, P.O. BOX 414,  
PORTAGE LA PRAIRIE, MANITOBA, R1N 3B7.  
PHONE: 1-204-872-3196... ANYTIME.



## The Chambers

by Marc Jackson, compiled from Town generated reports.

The regular Council Meeting of The Town of Snow Lake was held at 6:30 p.m. on July 17, 2012. In attendance were: Mayor C. Fisher, Councilors B. Forsyth-Flamand, D. Mayer, A. Kowalchuk, A. Enright, Project Manager V. Lazar, and Chief Administrative Officer J. Precourt. Absent: Councilors C. Samborski, and R. Klyne.

Minutes of the regular council meeting of July 3, 2012 were adopted; all statutory requirements having been fulfilled.

There were no additions to the agenda and no delegates.

Under Reports, A) Community Development Officer's report was discussed: a) Ms. Mihychuk advised that she has reviewed the airport proposals with the project manager and committee of council. b) A meeting was held with Snow Lake Museum Chairman, Paul Hawman in respect to potential Kate Rice information sharing and fundraising events. c) A meeting took place with Sue Matheson in regard Kate Rice research. d) Ms. Mihychuk met with VMS to discuss core logging and storage needs. e) She assisted contractors with identifying a temporary trailer location in town, so they didn't have to continually relocate it within Wekusko Park. f) She toured the proposed BacTech sites with Manitoba Conservation representatives. g) She assisted Chief Mining Engineer in organizing Snow Lake meetings for their planned visit. h) Held a breakfast meeting for discussions with VP Operations of QMX. i) Consulted with local business owners about economic development opportunities. j) She presented Kate Rice documentation to a number of PDAC board members. k) Initiated research on a Western Diversification Community Infrastructure Improvement Fund application. The Community Development Officer report was received for filing.

Under Reports, B) The Project Manager's (PM) report was discussed. a) Lazar noted that Stantec had arranged a pre-construction meeting for the WWTP (Waste Water Treatment Plant) upgrade in Winnipeg in order to discuss organizational aspects, construction drawings preparation, timeline and schedule, contractor's crew deployment and site preparation. b) The issue of excluding a monorail hoist and trolley from the WWTP project was been addressed and discussed with MWSB (Manitoba Water Services Board) and Stantec. A lower cost replacement will be proposed by Stantec shortly. c) The airport consultants arrived in town on week of July 23, 2012 to work with the Airport Steering Committee and Town representatives in order to obtain necessary information and suggestions. Recommendations regarding runway resurfacing were discussed as well. d) The layout of eight industrial lots have been reviewed and discussed in regard to different design proposals. e) As part of the application to Crown Lands, a sketch of the acquired area for industrial

lots has been submitted to the Surveyors for proper calculation and elimination of any issues and discrepancies during future application approval. f) The schedule for the Curling Rink and Fire Hall roofs application was requested. It was confirmed by the Contractor that both roofs would be completed by the end of July. In relation to his Two Week Plan, the PM expected to 1) Coordinate the WWTP construction schedule and site preparation. 2) Work with the selected consultant and steering committee for Airport study. 3) Discuss plans for residential development with Conservation Manitoba. The Project Manager's report was received for filing.

Under Reports, C) the Public Works Foreman's report was discussed. A work summary for the period from June 24 - July 7 was provided. During the period the crew worked at: Helping the Recreation Department at the beach, completing the sewer flushing and televising program, started sidewalk demolition (school to Cinder hill), hauled gravel to Bartlett Landing, started work on Bartlett Landing boat launch area, worked on pumps at # 5 Lift station, snaked the sewer at the beach after Canada Day events, installed a new culvert on Spruce St. back lane, topped up back up genset fuel after power outage, did airport checks, pushed the dump, pumped out portable toilets after Canada Day, worked on airport generator building, swept streets, snake the sewer at a residence on Kerr Ave., installed running boards on recreation truck, install two way radio in recreation truck, worked on street sweeper gear assembly, burned the woodpile at the dump, read water meters. Under Custom Work, the Foreman reported that Public Works hauled gravel by tandem to a residence at Berry Bay and to another within the town proper. In relation to their Two Week Plan, the Foreman advised the crew would work at: Continuing with the sidewalk project, screen sand, haul sand, haul gravel, sweep streets, and work on capital purchases. The Public Works Foreman's report was received for filing. During the meeting a resolution was passed approving an employee training and development request for L. Kucharyshen to participate in grader training.

Under Reports, C2) The Utility Maintenance report was discussed and received for filing.

Under Reports, D) The Recreation Maintenance report was discussed. A work summary for the period July 1 - 16 was provided. During the period the recreation crew worked at: Installing a kitchen window at the town house, snaked the sewer at the beach after Canada Day events, putting the floating dock back in place after the wind blew it in, painted the front wall of the arena, painting the outdoor arena buildings, sliding hill shed, and beer shed at beach, watering flowers and cutting grass as required, painted the Snow Lake sign and garbage bin at beach, did prep work for new sidewalks, repaired lawn cutting equipment, worked with roofing

contractors at the curling rink, ordered the slide for Lipsey park. In relation to their Two Week Plan, the Supervisor advised the crew would work at: Grass cutting, flower bed maintenance, when electrician becomes available, finishing the light retrofit at fire hall, forming sidewalks, overseeing roof projects, supervising students and setting work schedules. The Recreation Maintenance Supervisor's report was received for filing.

Under Reports, E) the Committee of the Whole Minutes of July 10, 2012 were received for filing (ED. NOTE: *These minutes were printed in their entirety in the August 2<sup>nd</sup> edition of The Underground Press*). Council noted that they would like to extend an invitation to Mr. J. Burden to participate on the Advisory Committee for the Snow Lake Airport Development Plan.

Under Reports, F) The Fire Chief's report was discussed. Chief Anaka advised that there had been no callouts during the period covered by his report Practices: Wednesday, July 4, 2012: The firefighters cleaned up and put away fireworks equipment and tidied up the hall.

Wednesday, July 11, 2012: The department took a tour of the Taylor/Berry Bay subdivisions. The Fire Chief's report was received for filing.

Under Reports G) The Mayor's Report - 1) Mayor Fisher advised the council that a new Mayor's column would appear in the *Underground Press* covering the topic of conditional use permits and core shacks. He also noted that both he and Mr. Precourt had been interviewed for the newspaper in respect to several issues including land development. 2) Mayor Fisher participated in the Provincial Interdepartmental Committee teleconference wherein they discussed progress on land development, economic development, and community planning. 3) The mayor viewed the repairs to the curling rink roof. 4) He also discussed economic development issues and strategies for prioritization with CAO Precourt and EDO Mihychuk.

Under Reports, H) the Administrator's report was discussed; in it he noted the following: 1) The CAO participated in the July 5, 2012 Provincial Interdepartmental Committee meeting regarding community planning, land development, and mining issues. 2) He toured all three joint development areas with representatives from Crown Lands and Forestry. 3) He attended the July 10, 2012, Committee of the Whole meeting. 4) Along with Mayor Fisher, was interviewed by the *Underground Press* regarding Snow Lake issues. 5) On July 11, 2012, the CAO met with the Director of the Mines Branch, Chief Mine Engineer, and Mines Inspector to discuss Snow Lake issues; reclamation project, mining surface rights, etc. 6) He met with a Crown Lands appraiser to discuss land valuations in Snow Lake. 7) He posted the Sanitation Maintenance Person job. For his two week plan, the CAO will continue to review proposed amendments to the 2012 Emergency Plan/Operational Exercise Planning, commence the Airport Development Plan, the formation of the advisory committee, and continue with 2012

capital purchases. The CAO noted that he required a resolution for 2011/2012 supplementary taxes. During the meeting it was moved, seconded, and passed. As well, council requested an invitation be sent for the next Provincial Interdepartmental Committee meeting to be held in Snow Lake. The Administrator's report was received for filing.

Accounts for the Town of Snow Lake were received for filing and there were no by-laws.

Under I) Correspondence: 1) Snow Lake Family Resource Centre in regard to a Maintenance Request. The Resource Centre asked that if and/or when the town is able they could spread some gravel in the Centre's parking lot, filling in low spots. The request was forwarded to Committee.

2) Marlene Kerr, in respect to having the town designate the area in front of her home as 'disabled parking'. Council denied the request to erect a disabled parking sign in a residential area.

3) Elaine Samborski in relation to the trailer court and land development. Although excited about area development, Ms. Samborski points out the fact that the homes in the trailer court are close to the road, people also park in front of their homes, and homes in the area with children are on the uptick. She asks that council consider dropping the speed limit on English Drive from 40 kph to 20 - 25 kph before there is an incident on the street. "Signs indicating 'children at play' and 'no exit' would help the situation," she wrote. The request was forwarded to Committee.

4) Minister of Northern Affairs in regard to Northern Manitoba History and the 100 anniversary of Northern Manitoba. The information was filed.

5) Elder Abuse Committee in respect to use of the Community Hall. The Committee on Elder Abuse is hosting a Regional Seminar on Elder Abuse on October 3<sup>rd</sup>. Their secretary, Grace Chrapun, asked that the town grant use of the hall for the event free of charge. The request was forwarded to Committee.

6) Ross Orr, Bac-Tech Environmental in relation to a Council Delegation. (ED. NOTE: *This was the same letter that Mr. Orr sent to the editor of the Underground Press, published in the July 19<sup>th</sup> edition.*) The letter was filed as information.

Under Other: Councilor D. Mayer asked that the wild rice growing in Berry Bay be cut by Manitoba Conservation. "It may present a hazard to nearby residents' drinking water," said the councilor. Council agreed, a letter should be drafted, requesting the wild rice be destroyed.

Mayer also noted that delegations to previous council meetings have exceeded the maximum amount of time for their presentation and have been off-topic. Council agreed that delegations should not be seated at the Council table, and will be required to provide their materials beforehand and follow a set timeframe.

The council went in camera to discuss business of a staffing, legal and preliminary nature. When they resumed their regular order of business, they approved the Employment Agreement for CAO J. Precourt for 2012 to 2015. Following this, the meeting was adjourned. ~ **MJ from town generated minutes and reports**

...**HUDBAY** from page 1

in addition to how the concentrator will allow the production of a paste backfill, which will not only reduce the amount of tailings sent to the Anderson Tailings Impoundment Area (TIA), but is also said to be the best possible ground support system for the Lalor mine. Other benefits will be improved ore recovery, and an increased use of recycled water and as a result, reduced use of fresh water.

Jay Cooper was called back to the podium to outline existing infrastructure that would be used in the project, as well as the project's components, the realignment of Highway #392, and the phased improvements at the Anderson TIA. One interesting item during this portion of the presentation was a detailed explanation of the water usage for the new facility. Use of fresh water in the process will drop dramatically – from 40% currently to 11% once the Lalor concentrator is commissioned. "In terms of what's being used today," said Cooper, "there will be a considerable decrease in water being pumped from the pump house on Snow Lake." Cooper illustrated how the pipeline system will include three separate pipes. One that will transport re-cycled water from the Anderson TIA for use in the Concentrator (primary source of process water); a second that will convey fresh water from their Snow Lake pumphouse for use in the concentrator (supplemental source of process water); and a third which will carry tailings from the concentrator to the Anderson TIA. Wastewater from the mine (including treated sewage) will be piped to the Chisel North Water Treatment Plant. From there, it will be discharged to the environment.

Cliff Samoiloff was then called forward to summarize the environmental assessment process. As with the speakers before him, Samoiloff said that they were not about to assume that everyone's concerns would be answered with their presentation, he stressed the importance of directing questions to them both during the subsequent Q&A session or one on one after it. "The process itself is really quite simple," Samoiloff began. "Essentially, the point is to determine, what is the environment like before a project starts? What is the environment going to be like when the project is finished? And what happens along the way?" He said part of their job was to find ways for the project to impact the environment as little as possible. He then cited some of the possible impacts (physical, terrestrial, aquatic, and socio economic) as well as focusing on the scope of the assessment. The scope included time-based boundaries that covered the construction period, from February 2013 to September 2015, operation period, from September 2014 to 2027, and closure, from 2027

to the future. The geographic boundaries of study he defined were the project site or footprint, the project area, of up to 2 km beyond the site, and the project region, of up to 10 km outside the site. Samoiloff stated that these boundaries could be adjusted to suit the environmental component affected.

He expanded upon the management and mitigation measures that would be in place for the various aspects of the project, explaining that tailings will be contained within the tailings impoundment area and any seepage that occurs will be contained by a seepage collection system. As well, pipelines will be equipped with secondary containment and installed aboveground with sand mounded over top. Water and sediment will be continually monitored to ensure the effectiveness of mitigation measures. Additionally, trees will be removed from flooded area in the TIA. Samoiloff said they anticipated that impacts would be negligible in all study areas; however, their traffic and noise survey was still underway.

At this point, Jay Cooper made his final appearance at the podium to impart some of the Socio-Economic benefits of the project, in respect to the Town of Snow Lake. Cooper said housing in Snow Lake will be required to support the project; however, as Hudbay has always maintained, there will be no permanent camps located at the site. When commissioned, the Lalor Concentrator will employ approximately 70 full-time employees, a majority of whom will be employees currently working at the Stall Lake Concentrator. He said any additional staffing requirements will be fulfilled from Snow Lake, Flin Flon and neighbouring communities. As well, business activity is expected to be sustained or augmented, and with the concentrate from Lalor being processed in Flin Flon, this would provide additional socioeconomic benefit.

Following an explanation of the closure plan for the project and removal of buildings and remediation at the site, Cooper opened the floor to questions. As was the case previously, the presenters showed patience in answering some questions and called upon each other's knowledge in answering others. A good cross section of queries were posed in the end session. They covered the realms of business development, the orebody, plans for the existing concentrator, trapping, dust control, water resources, highway traffic, tailings impoundment, dam construction, snowmobile access, and fish spawning habitat. When this session wound down, people were thanked for attending and invited to partake in refreshments, view the numerous poster boards, and talk to presenters one on one if they wished. **MJ**

...**PIONEER** from page 2

enjoyed. Before the conclusion of the supper Emcee Dawn Roberts announced the last event for the weekend, before thanking everyone for coming and in particular, the permanent residents of Herb Lake Landing, for making the weekend happen for everyone's enjoyment.

The last event was the Scavenger Hunt and although it took on a new format, it was well received. The list and instructions were handed out and the teams were asked to collect a number of items and return to the fire pit in front of Stabback's at 8:00 p.m. Cindy and Brian Shapka and Michelle and Tom Bridgeman were there to begin judging. Points were given for the items collected, before each team's Labrador Tea was put on the fire to boil. While the kettles were simmering each team's bannocks were applied to willow sticks and baked over the fire. When the bannock and tea were ready, the teams served tea and bannock to the judges. After much tasting

and decision making, the judges declared Team 'Great North' the overall winners. Blaine Spencer, Sharon Boruck, Bev Taylor, and Jim (?) had the best bannock and were awarded second place. The third place went to the Roberts' team who had the best tea. Honourable mention went to the Stoltz team, whose Labrador Tea is still steeping. Ron Stoltz kept the fire going for those who wanted to make the most of their last day at Herb Lake Landing. When they turned in for the night, the weekend was officially over.

Throughout the weekend, Linda and Garfield Butler held an 'Open House' and many people stopped in to enjoy reminiscing about Herb Lake, as they looked through Linda's many photo albums. Also throughout the weekend the Shapka's and Corman's lit up the night sky with a display of fireworks.

And that wraps up the 4<sup>th</sup> Annual Pioneer Days at Herb Lake Landing...

~ by Cathy Stabback

## Who's liable?



Councilor Chris Samborski ~ photo by Marc Jackson

Over the last several weeks, all, or most of the groups that use the recreation facilities owned and operated by the Town of Snow Lake were asked to advise the Town whether or not they carry liability insurance. This came as a shock to some and the first question it evoked was, "why?"

The reason is that the town now has a policy requiring that all user organizations and/or individuals have commercial general liability insurance in the minimum amount of \$2,000,000 prior to their event(s) taking place.

The Town's Chief Administrative Officer (CAO) Jeff Precourt says that it came about after council asked that recreational user groups and facility use be looked at. He says that they narrowed it down to three items that they really wanted to look at. The first was insurance and liability, which Precourt says was something their insurance provider requested they address immediately, secondly, fees and rental charges. The third is roles and responsibilities. "We've had a big disparity between our facilities in what some users are in charge of and others aren't," said Precourt. "Some facilities we have Town employees in, some we don't."

The CAO says that the first phase of addressing inequities within the Town's recreational umbrella began with the letters going out in relation to who did or didn't have liability insurance. He says that Snow Lake is slightly out of step

with other municipalities in that most have required users to have this type of coverage for years. "Which facility out there doesn't require some sort of insurance, especially when you are renting a multi-million dollar facility," Precourt asked rhetorically? "It's for the safety of the people who are participating and it's for protection of the financial interests of the town, basically everyone who is involved."

Precourt says that more or less everybody who uses the facilities will be required to have some level of insurance. They are querying groups now to get a feel for who has what. Some of the groups... quite a few already have it, so it won't affect them in any way," he said. "Some groups don't, so we are going to have to deal with that."

He adds that there is also another measure to it, that of one day rentals... for weddings, socials, meetings, car shows and the like. They too, will be required to have insurance. "It's not that expensive (\$25 - \$125 per day depending if there is alcohol or not)," said Precourt. "They can either get it themselves or fill out and fax the form we have and get it right there (at the Town office)."

Asked how this would affect the town's affiliated groups, or groups considered to be sponsored by the town or under their umbrella, Precourt says that they are currently looking at this as well. "It hasn't been well defined, and over time

see **LIABLE** on page 5...



(L): Al Bassham, Gail Eastman, Halleigh Johnston, and Rick Stabback show their prowess at the Pioneer Days Tug-of-War ~ photo courtesy of Cathy Stabback



### FOR SALE BY OWNER

PRAIRIE LAKE LODGE, LAKE OF THE PRAIRIES, RUSSELL, MANITOBA STILL HAS A GOOD SELECTION OF LOTS AVAILABLE FOR BUILDING OR TRAILER USAGE YEAR AROUND. ENJOY GOLF, EXCELLENT FISHING OR NATURE AT ITS BEST.

REASONABLY PRICED STARTING AT \$27,500.00 AND IMMEDIATE TITLED POSSESSION. CONTACT GERALD 204-773-0380 OR KEATING@ESCAPE.CA

...**LIABLE** from page 4

we've had new activities come online, so there has been a lot of uncertainty about who is and isn't covered and who should or shouldn't be," he said. "In the roles and responsibilities phase, that is where we will decide where everybody lies."

Councilor Chris Samborski was also in attendance and he chimed in stating that the Town certainly wants to make it clear that they will not inhibit any type of recreation with their decisions on this matter. "We've been quite pro-recreation, getting rid of fees and things like that," said the first term Councilor. "My own personal opinion is that if it comes down to paying a nominal fee for a volunteer group in the facility, well then let's cover it. We have these multi-million dollar facilities and this \$300,000 recreation budget and these buildings are barely used, so why would you want to inhibit use? The town's financial situation is on the upswing, so that certainly isn't

something that we want to do."

Questioned if user groups had been included in discussions on decisions that would ultimately affect them, Precourt answered that on the first part – the liability issue – no, because it was a must do matter. However, he says that for the next two phases, users will be asked to take an active part. Samborski concurred, "Ya, I think you'll see a little more action on it in the fall. We will get the Recreation Committee back together and that's when we'll tackle that."

The town has forms that allow for liability insurance to be applied for from the Western Financial Group on their Outside User Policy. An example of costs would see activities such as badminton and dance costing \$75 per season for 25 participants and others such as Volleyball and swimming costing out at \$150 per season for 25 participants... even a beer garden can be covered for \$100 per day.

**MJ**

## Town presented with plan



*Town Community Development Officer and author of their new Three Year Economic Development Plan, Mary Ann Mihychuk ~ photo by Marc Jackson*

The Town of Snow Lake was recently presented with a multi-year Economic Development Plan prepared by their Community Development Officer, MaryAnn Mihychuk. The document was dated June 30, 2012 and covers a three year period, presumably beginning at that date.

Expanding upon Snow Lake's 2009 Sustainable Community Plan, this newly enhanced project outlines a three year economic development work plan, which targets the community's future, while attempting to foster all aspects of its growth. The plan notes that the town is on the cusp of a number of new developments and it is crucial they have the fabric in place to direct and oversee all future advance of the community. "Each of these mineral development projects will bring significant revenues and jobs into the community and will increase Snow Lake's capacity to address residential, commercial, industrial, and infrastructure needs, which will be required as the town anticipates population growth to 2,100 by 2014," Mihychuk wrote in the plan's executive summary.

The report indicates that the number of direct jobs in the community, coming solely from the growth of area mining activity, will increase 260%, from the existing level of roughly 274, to a level of 736 jobs by 2015. "These mineral-related jobs will bring growth in secondary services and support jobs and opportunities tripling the population," the narrative reads. "This Economic

Development Plan takes a mineral resource perspective. The primary goal is to promote and stimulate mixed use services and small-to-medium sized sustainable businesses that are locally controlled and owned."

The plan maintains that in order to achieve the advantages the mineral development projects have to offer, Snow Lake must participate in what are described as, "three major economic *New North* development initiatives, aimed at strengthening its role and resources to be a leading Manitoba community." They are: a) A core services hub – set up to market Snow Lake as a mineral supply and service centre; b) A centre of expertise – to develop a mining remediation research entity in Snow Lake; c) Growth and development – which will focus on Snow Lake as a centre for business recruitment.

To become a Core Service Hub - Mineral Supply and Service Centre, the document advises that Snow Lake should develop into an Exploration Mining and Service Centre for Manitoba and eastern Saskatchewan. "This role for the Town of Snow Lake presents a niche opportunity to service the Exploration sector," it reads. "This sector, being less cyclical like mining, would provide greater long-term sustainability. Snow Lake businesses would aim to cultivate supplier relationships in a buy local strategy with large-scale mining companies."

The second initiative, becoming a Centre of Expertise - Mine Remediation Research Centre. The paper explains that

the Town of Snow Lake is ideally suited to host a 'world-class' research centre on mine closure and remediation based on three strategic factors. "First, the Snow Lake Greenstone Belt and area has a unique history with the prolific closure of more than 60-100 producing open pit and underground operations for base and precious metals," reads the document. "Second, Bactech Environmental is building the world's first remediation bioleach plant in Snow Lake and has committed to funding a Centre of Excellence in Bioleach remediation, and third, Snow Lake is centrally located between the Northern Manitoba Mining Academy in Flin Flon and the cold weather testing centre in Thompson."

The third enterprise put forward is Growth and Development - Business Recruitment, Retention and Quality of Life. Within the document, Mihychuk maintains that in order for the town to entice new business to, and preserve it within the area, stakeholders need to be proactive in marketing the business

opportunities available in the community. "In addition, Snow Lake should consider establishing some type of settlement service to assist professionals who have already been hired, and their employable family members find appropriately skilled work in their professional area of interest as well as introduce them to the educational, cultural and recreational programs," she writes.

The report also tackles the ever present issue that challenges businesses - securing financing. Noting that businesses in Snow Lake, similar to other mining towns, face significant challenges in raising capital due to poor awareness of the mineral industry, it recommends that the Town, in concert with the Province, explore financing opportunities and promote the region nationally through information sessions to investment and financing groups. The full report is interesting reading and is available through the Town Office and no doubt at some point on their website as well. **MJ**

## Committee of the whole meets

The Snow Lake Town Council held a Committee of the Whole on July 24, 2012 at 6:30 p.m., the off week of their regular council meeting.

Present at the gathering were: Deputy Mayor Rupert Klyne, Councilors Brenda Forsyth-Flamand, Angela Enright, Dave Mayer, Aldon Kowalchuk, and CAO Jeff Precourt

Deputy Mayor Klyne called the meeting to order at 6:30 p.m.

The first item up for discussion focused on the community's new Garbage Collection Maintenance Person. The committee went in-camera to discuss business of a staffing nature, specifically the garbage collection maintenance person position and then resumed their regular order of business.

Next was a proposal from the Snow Lake Motor Inn. The committee discussed a land development proposal from the Motor Inn, which looked to purchase property adjacent to their building for construction of an outdoor patio. During their deliberations, the committee reviewed information provided by the Provincial Assessment Branch regarding commercial property values in northern Manitoba (including the City of Thompson). They also discussed the approximate costs for surveying and subdividing the 1,200 sq. foot parcel. The committee decided to recommend that tentative approval be given for this development proposal; however, with the conditions that the land would be valued at \$1.25 per sq. foot, the survey/subdivision cost would be charged to the purchaser, and the patio structure must be constructed within 2 years.

Subsequently, the committee dealt with a material request from the Family Resource Centre. The request was that gravel material and the spreading of same be granted to the Family Resource Centre/Northern Tykes Daycare free-of-charge. The committee reviewed an estimate of approximately 15 to 20 yards of materials at a cost of \$480 to \$640, plus one hour of loader work at \$110.00. The total estimated cost was \$590 to \$750. The

Committee discussed the Town's previous contributions to this organization including funding in the 2012 budget. In the end the committee decided against recommending the approval of the request and asked that future requests be forwarded to the Town's annual budget committee.

Following this item the committee dealt with a request from the Elder Abuse Committee asking that use of the community hall be granted free-of-charge for a conference they will hold October 3, 2012. The committee of the whole reviewed the notes regarding the conference's approx. \$12,000 Provincial grant funding. The Town's previous Community Development Officer had assisted in obtaining this funding for the conference. They discussed approximate costs to the Town associated with the use of the hall, including cleaning and other employee costs and in the end refused approval of the request.

Next the committee heard some concerns in respect to the English Drive development. They reviewed correspondence from Elaine Samborski regarding trepidations about the increased traffic and development on English Drive. She requested the speed limit be reduced further from the current 40 km/hour, erection of dead-end signs and a secondary access to the English Drive extension. The committee recommended that this information be taken under advisement as the residential land development continues to proceed.

The final item for discussion was Snow Lake Water Pressure. The committee discussed lower water pressure in several areas of Snow Lake, particularly Brentwood and the Elm/Balsam area. They discussed the capacity needs of several local businesses and issues associated with low water pressure, before recommending that a water leak detection program be implemented. As well, they recommended that several Elm Street businesses have their water pressure tested, followed by an increase of 5 psi at the water plant and then re-tested. The meeting adjourned at 8:30 p.m. ~ **MJ from a town report**



PENNY DAYS!



**A total of 46 people attended Penny day at the Snow Lake Mining Museum. The penny Parade was a big success, with tickets sold all week and the draw being made at 5:00 PM on August 8th. Winners were: Jesse Yoder, Marilyn Humeniuk, Maddox McMechan, Bob Forsyth, Kaylee Forsyth, Brenda Forsyth-Flamand, Sandy Hawman, Wendie Pilgrim, Mason Tower, Austen Roberts, Anna Roberts, Margie Fulmore, Vince Shaw, Marlene Kerr, Kaynen McMechan, and Sharon Stubbs. Thank you to all who so generously donated!**

## Street Party/Pig Roast an 'oinking' good time!



people who had nothing to do with either the organization or administering of the event rolled up the sleeves and lent a hand to set supper up in the restaurant. "It was Snow Laker's coming together as they always do," he said. "A real show of community effort."

Main Street was rockin' during the Royal Canadian Legion Branch # 241 and Snow Lake Motor Inn sponsored street party, held during the afternoon and evening hours of Saturday, August 11th. Anyone who was there described the atmosphere as, "awesome"! Gerard Lamontagne, who along with wife Roxane, owns and manages the Motor Inn said, "Unquestionably, a great time was had by all!"

Lamontagne said the event kicked off at around 3:00 p.m. and the big attraction an hour later was the Legion's weekly 'Meat Draw'. "Only this week's draw was outside on the street," he said. By the time the Pig Roast supper (6:00 p.m.) rolled around, the skies were threatening and close to 250 people were milling about, talking, laughing, and visiting on the street in front of the two establishments.

Right before supper was served, the rain came, so Lamontagne says he conferred with Legion President, Cauline Armsworthy and they made the decision to transfer things inside. As the Motor Inn's Rose Room was deemed the best spot to shift to, that move was put into motion. Lamontagne says that

While supper was served to people who lined up inside, Rupert Klyne cut the pig and Lamontagne transferred it into the restaurant. As fast as he could do this, people were gobbling it up. Many were heard to say that the barbecued pork and salads that accompanied it were part of one of the finest meals they'd partaken in.

With the rain coming down, both the Legion and Motor Inn were full. "And still," Lamontagne says "There were 30 - 40 real 'troopers' who were partying outside." Nevertheless, when the rain abated, local band, Dix 'N' Chix played, people moved onto the street and milled back and forth between the bar and the Legion. All proceeds from the dinner were donated to 'Families in Need' as was the house's half of the Meat Draw's 50/50.

Asked if he'd do it again, Lamontagne said, "Definitely, the Legion and especially Cauline were great to work with. We did some good and this thing went over really well." *MJ*



Snow Lake Motor Inn's Gerard Lamontagne and Legion Branch # 241 President, Cauline Armsworthy showing off supper! ~ photos courtesy of Darrell Hicks



## Why do we say that?

by: Phyllis Verbeek

Summer lingers on, with sunny days and long evenings, boasting incredible sunsets. This is indeed the period in each year equaled by no other, and there is no better place to enjoy this tranquility than here in Northern Manitoba. Blue lakes, sandy beaches, the smell of barbeque, and the sounds of laughter all play a part in summer fun in Snow Lake.

One might describe this extraordinary season of enjoyment with a well-known phrase: 'in the groove'. This is an idiom meaning - performing very well, or excellent. The phrase originally alluded to running accurately in a channel, or groove with the basis being from Thomas Edison's talking machine (otherwise known as the phonograph). The phonograph was a scientific marvel in 1877 when Thomas patented his phenomenon! His invention was made from a brass pipe into which he had cut spirals. Tin foil wrapped over the brass was indented by sound impressions and this sound was reproduced with some precision to the original sound by means of a cumbersome needle making contact with the foil. Everything worked well as long as the needle remained in the groove made by the foil. When the needle jumped the groove: not so good! The term was taken up by jazz musicians in the 1920s and later began to be used more loosely. Today we are 'in the groove' when we are performing in sync, while enjoying the experience.

Closely related to 'in the groove', is another commonly used phrase: 'on the beam'. This phrase refers to a plan or enterprise which is consistent and unwavering: (ie, a consistent plan to frequent the golf course or fishing hole every sunny day this summer!) The term

originated with airport control by use of a beam. Early navigators, such as the Wright brothers, had no guidance system and landed their aircraft using only intuition and best efforts. The introduction of a beam of light (guidance beams) sent from the ground, with receiving sets on aircraft did wonders to improve safe landings. A pilot could now locate a beam and follow it to base by means of instrumentation. Today any successful plan carried out without interruption is considered 'on the beam'.

Perhaps we are enjoying our summer in 'high gear'. This term suggests doing something at top speed or with certainty; (ie, children swimming every day of summer sunshine, with no desire to change the routine). Early use of automobiles necessitated shifting of gears. This exercise demanded energy and attention in order to reach full potential. One began driving in low gear, advanced to second gear, then to third gear and finally to high gear. Today many sports cars have reverted to a form of this original design and are known as a car with four on the floor. The system works with low gear giving power to get things rolling. Second gear offers an increase in speed but with a reduction in pulling power. When high gear has been reached, the effort affords the maximum speed that horsepower and road conditions permit. If you are in high gear you are spending your time smoothly and efficiently.

It is my wish that you, my readers, are spending your summer *in the groove, on the beam, and in high gear.*

# ROSS

Industries Ltd.

Journeyman Machinist  
Portable Line Boring and  
Bore Welding  
Custom Machining  
Hydraulic Repair  
Bar Stock Sales

204-687-7738  
13 Mitchell Rd, Flin Flon  
www.rossindustries.ca  
paul@rossindustries.ca



### NOTICE OF PUBLIC AUCTION SALE OF LANDS FOR ARREARS OF TAXES TOWN OF SNOW LAKE

Pursuant to subsection 367(7) of The Municipal Act, notice is hereby given that unless the tax arrears for the designated year and costs in respect of the hereinafter described properties are paid in full to the Municipality prior to the commencement of the auction, the Municipality will on the **14th** day of **September, 2012**, at the hour of **1:00 PM**, at the office of the Town of Snow Lake, 113 Elm Street, Snow Lake, Manitoba, proceed to sell by public auction the following described properties:

Roll Number	Description	Assessed Value	Amount of Arrears & Costs for Which Property May be Offered for Sale
60700	LOT 2 PLAN 24606 PLTO IN 67-16 WPM 2 SANDY BEACH	L -\$3,200 B -\$30,100	\$4,342.19

The tax sale is subject to the following terms and conditions with respect to each property:

- The municipality **may** exercise its right to set a reserve bid in the amount of the arrears and costs.
- The municipality makes no representations or warranties whatsoever concerning the properties being sold.
- The successful purchaser must, at the time of the sale, make payment in **cash, certified cheque or bank draft** to the Town of Snow Lake as follows:
  - The full purchase price if it is \$5,000 or less; OR
  - If the purchase price is greater than \$5,000, the purchaser must provide a non-refundable deposit in the amount of \$5,000 and the balance of the purchase price must be paid within 20 days of the sale.
- The risk for the property lies with the purchaser immediately following the auction.
- The purchaser is responsible for obtaining vacant possession.
- If the property is non-residential property, the purchaser must pay GST to the municipality or, if a GST registrant, provide a GST Declaration.
- The purchaser will be responsible for registering the transfer of title in the land titles office, including the registration fees.

Dated this 26<sup>th</sup> day of July, 2012.

Managed by:



Jeff Precourt  
Chief Administrative Officer  
Town of Snow Lake  
Phone: (204) 358-2551  
Fax: (204) 358-2112



Is this your new house?  
Call 204-529-2533 to find out more or brad@pennerbuilders.com

**penner**  
builders



## London, Rome... Parres?

By Jim Parres

### INCINERATED?

The thunder was crashing, the lightning bolts were flashing and I was soaking wet. I was standing on top of a knobby rock outcrop, with the nozzle in my hands, washing the soil off the iron formation. We had 1000 feet of fire hose hooked up to a Honda fire pump and I could barely hang on to the hose with all the pressure. A person certainly didn't want to slip on the wet rocks.

It went through my head that should I get electrocuted people who knew me would say, "What was that crazy SOB doing standing out in the rain, on a hill, during a thunder storm?" My defense would be that I was TRYING to get some production, as the weather has really been against us...

Gerry White, an Ontario Ministry of Northern Development and Mines geologist, was to come out to the property in a few days' time to eyeball the alteration in our rocks. John Scott, our Consultant geologist, would accompany Gerry and show him the contorted iron formation and related structures. They were flying in with North Star Air, out of Pickle Lake, in a Cessna Caravan, which was once used as an executive aircraft. The pilot was a young lady from Kenora, Ontario, by the name of Pam.

North Star has put this Caravan up for sale as the

insurance is very pricey and business has been slow ever since the Natives placed a moratorium on the huge development at the 'Ring of Fire'.

Cartwright Drilling has seven machines available. P C Gold is completely shut down. Fladgate Consulting has laid geologists off. Many of the Northern businesses, such as North Star, are hurting. The Reserve we deal with is expecting a settlement of \$150 million from Hydro.

The 'Junior' market, used to raise exploration funds, has also 'gone south', so there isn't a lot of happiness in the mineral exploration community in these parts. A number of consulting companies have laid off staff, while other contractors cling to the exorbitant rates they were charging during the 'hay-days'.

I had a crew of five helping me and we were concentrating on stripping outcrops on the south edge of the chemical sediments belt. The weather has been really crappy, with only two good days in the last week. As well, the river has come back up and is threatening our camp again. Last year it was the fire; this year flooding.

Two of the crew were cutting quad trails into outcrops I had located by traversing. We started close to the pump on East-West creek and stripped three areas of mafic volcanic. That took an entire day. The crew were laying out the hoseline on trails between the outcrops. Once we finished washing, we unhooked the nozzle, coupled the hoses together and advanced. On our best day, we

washed nine separate exposures, as the rest of the crew cut trees and striped some soil to prepare the outcrops for washing. This is a cost effective way of getting a good handle on the geology.

Once Gerry and John arrived, we did the tour through the burn and looped back on the recently stripped outcrops. Gerry took some samples and seemed pleased with our work. We also toured the gold zone, where the quartz veins with the VG (visible gold) are on the contact of some mafic volcanic containing magnetite and a fragmental unit that has undergone deformation (shearing and stretching).

A bear arrived overnight and chewed up a plastic gas can. It reminded me of the time my wife and I were cutting picket lines at Beardmore, Ontario, back in the 80's. We came back to the Baseline for lunch and our gas cans and oil jugs had all been chewed up. He got our lunches and Five Alive drinks, while we were running chain saws about 600 feet away.

The cost of any drilling program (for us) is exacerbated by the fact the property is remote and sometimes the drill needs to be moved by a helicopter. In the old days, they winched the drill through the bush from one collar location to the next.

BHP-Utah and Northern Dynasty (Ontario Joint Venture) had previously explored this general area immediately after the discovery of the Musselwhite Gold Mine, currently operated by Gold Corp. This discovery set off a flurry of regional activity centered on iron formations as a host rock for the migrating gold-quartz solutions. Wish us luck!

London, Rome... Parres?



## Talk of the Town!

by: Mayor Clarence Fisher

Different levels of government look after different things. The federal government looks after things like trade and defence. The province handles health care and education. As a local government, one of the responsibilities that we have to look after is all of the garbage that is produced in the community.

Before I became mayor, I never really gave garbage much thought. The garbage truck came a few days a week to my house and when I needed to drop off extra, I took my truck to the dump. Now, I know that dealing with all of the issues around the garbage that is produced in town is a complex puzzle that needs to be planned out.

By the time this column is published, the Town will have begun picking up garbage from around

town. We have hired a new employee who will be looking after this job during his morning hours and we are currently looking for a garbage truck.

A garbage truck is a significant investment for the Town. We are purchasing this truck similar to the way that we would buy a new fire truck. We expect it to last for years. With this in mind, we are looking for a truck that has an arm on it that will pick up garbage cans automatically and dump them into the truck. We are going this route looking ahead to the future. If we are buying a truck to be used in town for years to come, what do we want that to be like? It really doesn't make much sense to have an older style truck, while we have an expanding population.

These types of trucks require a specific kind of garbage can that can

be picked up by the truck. Since it is the Town that has made the decision to purchase this type of truck, we are also going to purchase cans for each of the properties in town. These cans are becoming standard in most places that have automatic garbage trucks. Each residence in Snow Lake will eventually receive one of these large wheeled garbage cans. (If you are interested in seeing what they are like, stop by the Town office, they have one there as a sample.) Each of these cans has a serial number on it and will stay with your home. Even if you move or decide to sell your house, the garbage can must stay behind for the next resident. This is also standard practice in most places. These cans are on wheels and can be handled by seniors and wheeled around quite easily.

Making this change means that we need to look at a number of different things that will be affected. For example, we need to look at how we clear snow in the winter. We also need to look at how the truck will work in different areas of town. In some places

the cans will need to be placed in the alley for easy pick up, while in others, just like now, they will need to go in the front. This may mean that parking regulations will need to be put into effect in some areas to ensure that there is enough room for the truck to pick up the cans. Again, all of these things are pretty standard in places that have upgraded to auto loading trucks.

While we are looking at changing how the garbage is picked up from your home or business, we are also going to be looking at how recycling is done in town. Many communities have moved to one day per week garbage pickup and possibly a second day for recycling. While, unfortunately, we aren't at the point where we can make a move like that, it is something that we have talked about and will be considering once we settle in to this new system. In the end, our hope is that once the wrinkles are ironed out, this change will mean a high quality of service for everyone in Snow Lake.



### SNOW LAKE RECOVERY GROUP

is a fellowship of men and women who share their experience, strength and hope with each other that they may solve their common problem and help others to recover from addiction.

Meeting times are:  
Sunday at 2:00 p.m. in the Family Resource Centre basement or Thursdays at 8:00 p.m. in the Hospital Board Room

PH: Jerry - 7732, Monique - 7088, Colleen - 7634, or Terry - 9890



### .Stoupe's Tire and Towing.

212 Jasper Avenue  
Phone: 358.2627

\*CALL US ABOUT TIRES, CAR TIRES, TRUCK TIRES, QUAD TIRES... ANY TYPE OF TIRES... YOU NAME IT\*

SEE US FOR: \*Tire repairs, change overs, and balancing  
\*Towing and boosting \* Vehicle lock-outs\*

\*\* CAA Local Contractor \*\*  
See us for CAA Memberships!



### H.D. CENTRAL EXPRESS

(BUS DEPOT) 358-9743

10:00 AM - 5:00 PM, MON - SAT

Effective July 1, 2012

H D Central Express will be open

Mon to Thurs	10 to 5
Fri	10 to 6
Sat	closed
Sun	closed

We will be taking freight every week day leaving here at 12.30 (noon)  
Bus Passengers MUST buy their tickets here and get themselves to Ponton.

Any questions please feel free to stop by the bus depot, and we will do our best to help you out. Thank You.



Thompson and Area RCMP  
Drug Tip Line  
(204) 677-6995  
All calls are anonymous.



### SNOW LAKE BAPTIST CHURCH 101 LIPSEY DRIVE



#### Service Times

Sunday School - 10:00 a.m.

Worship Service - 11:00 a.m.

Sunday Evening Service - 7:30 p.m.

Wednesday Bible Study and Prayer meeting - 7:30 p.m.

Call Pastor Fenwick at 358-2002





# CAPITAL MATTER\$

BY: DUSTIN LAMONTAGNE

## Showdown in Londontown

From a marketing perspective, is there any event, worldwide, more lucrative for a company to gain instant exposure than the Summer Olympics? With 150 plus countries; 2 billion viewers; primetime coverage from every TV network on Earth, the Olympics is a spectacle like no other.

I tried to convince Marc to send me to cover the games for the UG Press, but I guess it just wasn't in the budget this year. Oh well, I will watch and listen to the analysis on TV like all the other rubes, while the commentators try to drain every ounce of drama out of sports like Ping Pong or the Steeplechase.

What is it with our species, that every four years we get absolutely mesmerized by men and women competing in the likes of synchronized trampoline, shooting, archery, equestrian, kayaking, water polo, group synchronized swimming, rhythmic gymnastics and about 40 more obscure sports everyone will forget in another 2 weeks? Sure, there is a little more attention paid to the major sports like soccer, basketball, gymnastics, track and swimming, but those athletes will be forgotten just the same.

Every Games produces a few heroes who are transformed instantly into

marketing saviours destined for cereal boxes and lunch kits across America. Mary Lou Retton, Carl Lewis, Donovan Bailey, Jamie Sale, and Michael Phelps are names which come to mind from past games. Does anyone remember Eddie the Eagle from the Calgary games?

There were some great stories profiled along the way. For companies like Coke and McDonald's, sponsorship of the Olympics is a no-brainer, as they are giant multinationals whose products are basically for everyone, so they gain worldwide exposure. For other companies, I am not so sure the money is well spent. Will UPS ship more packages as a result of its Olympic advertising, or will Bud sell more beer? I am not sure the major demographic watching swimming or gymnastics is males aged 18-35. In any event, the Olympics are no longer about the sport in my estimation, but about the corporate sponsorship and the host city.

By far, the most watched events are the opening and closing ceremonies. The budget for the London Games was estimated at \$6-7 billion, when they made the formal bid to get the games some 12 years earlier. How much over budget did the esteemed accounting professionals from 10 Downing Street go? Last estimate I heard is that the London Games will come in at about \$20 billion. That is

more than just a rounding error. Dad just lost his job due to austerity measures kids, but at least we got to see a washed up Paul McCartney belt out tunes at \$20 million a crack.

Almost every city which hosts an Olympic games leaves a legacy of white elephants in its wake... perhaps, none more so than Montreal in 1976. Montealers have poured more than a \$1 billion into Olympic Stadium alone and it is still a piece of junk. Montreal has never recovered from the '76 Games, and is no longer the world class city it once was. After all, what does a city do with a \$100 million velodrome, long after the cyclists have all gone? The aquatic facility in London is absolutely stunning, but guess who gets to foot the bill for maintaining a pool which can accommodate 10000 spectators long after the swimmers have made their last strokes? Vancouver spent \$150 million dollars on the speed skating track for the 2010 Winter Olympics. Am I the only person who thinks that may just be a little over the top, for a sport very few people participate in? An arena or stadium, I can understand spending big dough on; after all, these are multiuse facilities which can be busy for decades to come. But are we really going to see Justin Beiber play the Ice skating oval in Vancouver? I'm quite sure the facility can't host a monster truck jam.

More often than not, these facilities get used very little and strain the finances of the host cities for decades. The Athens games basically bankrupted Greece, although the work ethic of the populace may have been a contributing factor.

When we know going in that the Olympics is generally a financial disaster waiting to happen, what country or city in their right mind would want to host them? Is this not the perfect definition of insanity? The obvious reason is that we have politicians in charge who have no accountability and they have egos in need of stroking. Everyone wants to leave a legacy these days. The Greeks discovered 4000 years ago that it was easier to build temples and host gladiator competitions than to be fiscally responsible. Wait a second, didn't I just mention that Greece went bankrupt? Maybe this isn't the business model the rest of the world should emulate. \$\$

As with any investment decision, research or consultation with a professional investment advisor is recommended.

This material is not to be construed as a direct offer or solicitation. The securities mentioned may not necessarily be considered to be suitable investments for all clients. Contact your investment advisor to discuss your individual investment needs.

*Dustin Lamontagne is an Investment Advisor with Mackie Research Capital. The opinions, estimates and projections herein are those of the author and may not reflect that of Mackie Research Capital. The information and opinions contained herein have been compiled and derived from sources believed to be reliable, but no representation or warranty, expressed or implied, is made as to their accuracy or completeness.*



## Thank you Snow Lake...

The Royal Canadian Legion Branch # 241 and the Snow Lake Motor Inn would like to thank the incredible Town of Snow Lake for making the 2012 Street Party such a huge success! We would like to thank the following for making all the salads for the event: Iona Johnston, Bev Meuse, Esther Simpson, Annette Lamontagne, Lois Charron, and Linda Woods. We would also like to thank the following for helping out on Saturday: Bryce Henderson, Ryan Evans, Davey Roberts, Larry Barnesky, Darrell Hicks, Terry Rudd, Jason Frost, Rupert Klyne, Aldon Kowalchuk, Marie Pettipas, Chris Maloney, the local band, Jr. Lavallee, Daryl Armsworthy, David Morrison, Gerald de la Roche, Darlene and Bill Pleasance, the Town of Snow Lake, Kristen McKenzie, and anybody else who lent a hand! We sincerely apologize if we missed the name of anybody who helped out. And of course, a huge thank you to the local band and all those who helped move them when the rain came. As well, thanks to all those who helped us move the pig roast indoors. The spirit, generosity, and unity of the Town of Snow Lake has once again proven itself worthy of utmost praise!

Thank you all again from the Royal Canadian Legion Branch # 241 and the Snow Lake Motor Inn!



Someone's idea of a joke... or is it true, every house in Manitoba was tuned in, watching the Olympics, and cheering on Canada? (note the homeowner to the bottom right in the photo) ~ photo courtesy of Ted Stabback

Below: Photo of a sample garbage can that will be issued to all Snow Lake residents ~ photo by Marc Jackson



## THE SNOW LAKE MOTOR INN AND THE ROSE ROOM RESTAURANT PRESENT 3 NEW SUPPER SPECIALS!



**Monday- Steak Night! (5 pm to 8.30 pm)** Featuring a prime rib-eye steak, fresh fried mushrooms, baked potato with all the fixings, Caesar salad, baked beans, garlic toast, and a bar beverage! All for \$15!

**Wednesday- Family Pasta Night! (5 pm to 8 pm)** Featuring homemade spaghetti & meatballs or lasagne! Accompanied by Caesar salad, garlic toast, and ice cream for dessert! \$9.99 for adults, \$6.99 for kids!



**Friday - Prime Rib Sandwich Night! (5 pm to 8.30 pm)** A whole loin of prime rib cooked rotisserie style on our barbecue! Thinly sliced, dipped in au jus and piled high on a fresh bun with sautéed onions and horseradish mayo! Accompanied by potato salad, southern coleslaw, baked beans, and a bar beverage! All for \$15!



On these nights, or any other but Sunday, you can also enjoy Marie's famous homemade burgers and fries, towering clubhouse, tasty whistle dog, and 'Homemade' soups and deserts! Plus delicious specials on Tuesday, Thursday, and Saturday! Come on down folks!



**Restaurant Hours: Mon to Thurs - 4 pm to 8.30 pm. Fri & Sat- 11.30 am to 8.30 pm, grill off at 8 pm. Sunday - Closed**  
For takeout orders phone: 204.358.2331  
All specials are plus taxes