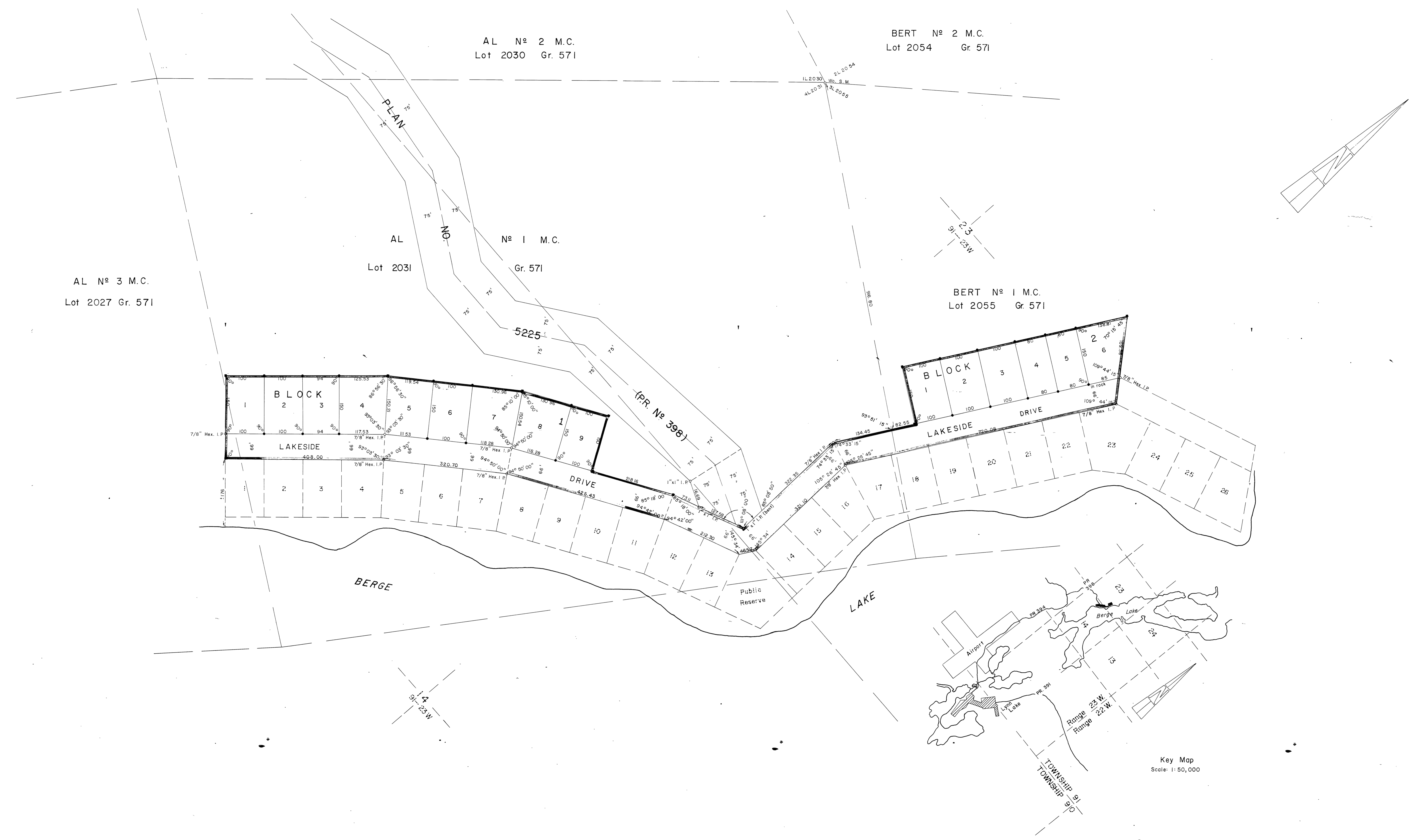


Carl Gustaf
Director of Surveys

PLAN OF SUBDIVISION
Of Part of Unsurveyed Sections 14 & 23
In Unsubdivided Twp. 91 Rge. 23 W.P.M.
UNORGANIZED TERRITORY
MANITOBA

Scale: 1 inch = 100 feet.



NOTES
All distances are in feet or decimals of feet.
Survey monuments found on the ground are described and shown thus .
Iron posts 1" x 1/4" x 3/16" marked M.L.S. were placed at all points shown thus .
Iron posts 3/8" x 3/4" x 20 were placed at all points shown thus .
All 7/8" hexagonal I.C.'s found were placed by J.M. Stewart 1956.
All plans referred to are on record in the Neepawa Land Titles Office.
Stakeins planted from aerial photograph A-14889-109 on record in the Director of Survey's Office.
Land affected by the registration of this plan is shown bordered pink hereon.

AFFIDAVIT
I, Ian Robson Bowman of the City of Winnipeg, Manitoba Land Surveyor, make oath and say that I did personally supervise the survey represented by this plan, that the survey was made between November 17, 1976, and November 21, 1976, and that the survey and plan are correct and true to the best of my knowledge and belief.

Sworn before me at Winnipeg
this 7th day of January A.D. 1977. *Ian Robson Bowman*
M.L.S.

A surveyor authorized to practice under "The Land Surveyors Act"

APPROVALS
Approved and Confirmed
This 10th day of January A.D. 1977
Carl Gustaf
Director of Surveys

Approved
This 2nd day of August A.D. 1977
Ian Robson Bowman
for Minister of Renewable Resources and Transportation Services

The Manitoba Hydro-Electric Board
[Signature]
Secretary

Approved
This 20 day of September A.D. 1977
[Signature]
Registrar - General

Approved
This 25 day of July A.D. 1977
[Signature]
Director of Parks

Approved
This 20 day of September A.D. 1977
[Signature]
The Manitoba Telephone System
General Manager



REGISTRATION
Entered and registered in the Neepawa Land Titles Office this 2nd day of NOVEMBER A.D. 1977. at 11:00 a.m. as PLAN NO. 6324
[Signature]
District Registrar

EXAMINER OF SURVEYS
APPROVED
Valid for 12 months unless registered
This 20 day of Sept. A.D. 1977.
[Signature]
Examiner of Surveys

Key Map
Scale: 1:50,000