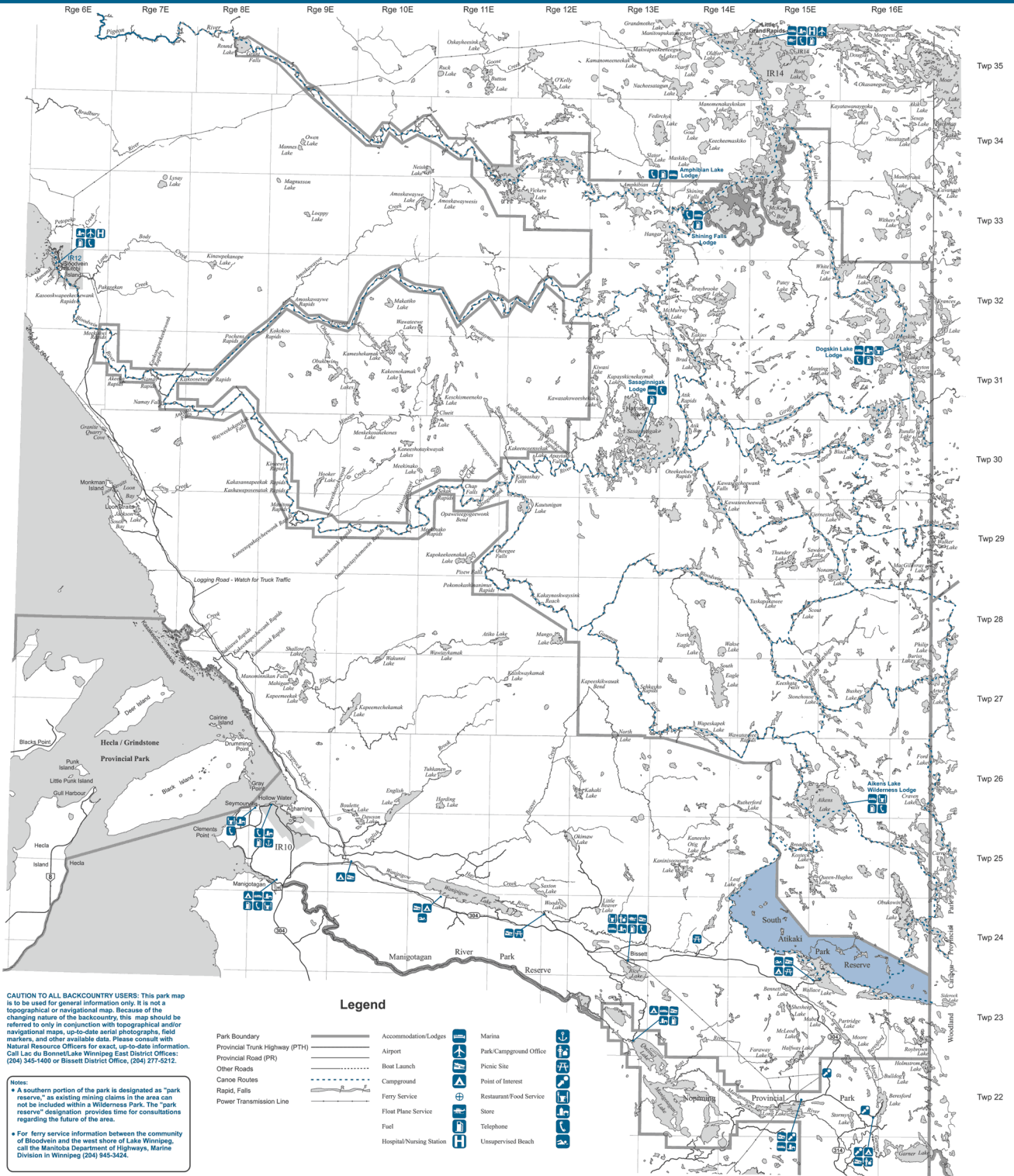


# Atikaki Provincial Wilderness Park



**CAUTION TO ALL BACKCOUNTRY USERS:** This park map is to be used for general information only. It is not a topographical or navigational map. Because of the changing nature of the backcountry, this map should be referred to only in conjunction with topographical and/or navigational maps, up-to-date aerial photographs, field markers, and other available data. Please consult with Natural Resource Officers for exact, up-to-date information. Call Lac du Bonnet/Lake Winnipeg East District Offices: (204) 345-1400 or Bissett District Office, (204) 277-5212.

**Notes:**

- A southern portion of the park is designated as "park reserve," as existing mining claims in the area can not be included within a Wilderness Park. The "park reserve" designation provides time for consultations regarding the future of the area.
- For ferry service information between the community of Bloodvein and the west shore of Lake Winnipeg, call the Manitoba Department of Highways, Marine Division in Winnipeg (204) 945-3424.

## Legend

Park Boundary		Accommodation Lodges		Marina	
Provincial Trunk Highway (PTH)		Airport		Park/Campground Office	
Provincial Road (PR)		Boat Launch		Picnic Site	
Other Roads		Campground		Point of Interest	
Canoe Routes		Ferry Service		Restaurant/Food Service	
Rapid, Falls		Floot Plane Service		Store	
Power Transmission Line		Fuel		Telephone	
		Hospital/Nursing Station		Unsupervised Beach	

