

# Poplar/Nanowin Rivers Park Reserve

## Proposal to Repeal the Poplar/Nanowin Rivers Park Reserve

### Introduction

The Poplar/Nanowin Rivers Park Reserve is located approximately 290 kilometres north of Winnipeg, stretching from the eastern shore of Lake Winnipeg to the Manitoba-Ontario border. The park reserve is 7,757 km<sup>2</sup> in size and includes 15 registered traplines in the Poplar River trapline district. The area features landscapes representing the Lac Seul Upland portion of Manitoba's Precambrian Boreal Forest Natural Region and includes marshes, bogs and granite outcroppings and forests of tamarack, black spruce, aspen poplar and jack pine.

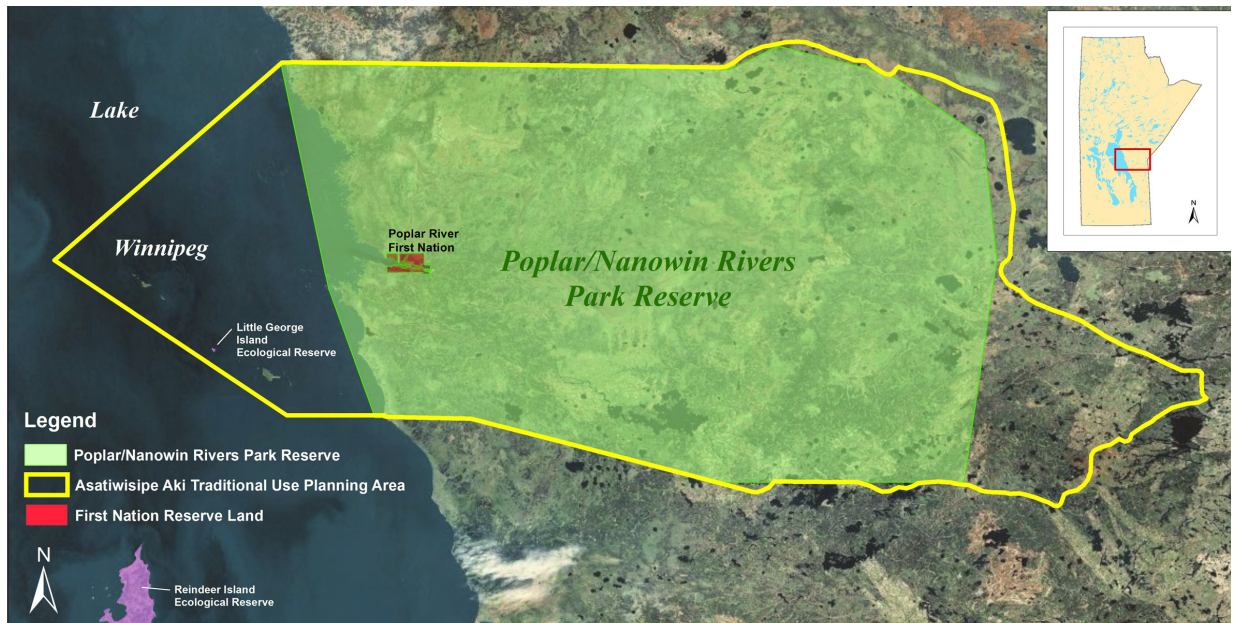
### What is a Park Reserve?

To assist in the creation of new provincial parks and protected areas, *The Provincial Parks Act* provides for the establishment of park reserves. Park reserves provide interim protection to areas while being considered for inclusion in the provincial park system or for designation as a protected area.

Park reserves are placed on candidate areas for an initial period of six months and can be extended for a period of five years. Poplar/Nanowin Rivers Park Reserve was first designated in 1999, with the support of Poplar River First Nation (PRFN). The designation provided interim protection to the area while PRFN and Manitoba undertook a process to complete a land management plan for the First Nation's traditional area, including the park reserve. The park reserve was intended to also protect woodland caribou habitat, promote the natural and cultural heritage for the area and to provide nature oriented recreational opportunities. The park reserve designation was renewed in 2004 and again in 2009. The current park reserve timeframe for Poplar/Nanowin Rivers expires September 30, 2013.

Initial planning process conducted by PRFN and Manitoba considered designation options for protecting the First Nation's traditional area, including the park reserve area. At the time, First Nation's traditional lands could only be protected through legislation designed for specific purposes such as the creation of provincial parks (ex: *The Provincial Parks Act*). In 2009, the province introduced new legislation that would allow for the planning and protection of First Nation lands east of Lake Winnipeg – *The East Side Traditional Lands Planning and Special Protected Areas Act*. The act provides PRFN and other east side First Nations with legislation to legally establish land use plans and protection for their traditional areas.





In June 2011, the Province of Manitoba designated the PRFN Asatiwisi Aki Management Plan under *The East Side Traditional Lands Planning and Special Protected Areas Act*.

The designation provides legal protection to the PRFN planning area, including the area already designated as Poplar/Nanowin Rivers Park Reserve. The plan outlines initiatives such as educational programs, ecotourism and interpretive and cultural programs. The province is now in process of implementing the plan with PRFN and has included the planning area as part of the current UNESCO World Heritage Site nomination bid.

## Proposal

- To repeal the Poplar/Nanowin Rivers Park Reserve designation.

With the designation of the Asatiwisi Aki Management Plan and protection of the planning area, the Province of Manitoba is proposing to repeal the Poplar/Nanowin Rivers Park Reserve, eliminating a dual designation for the planning area. PRFN supports the decision to repeal the park reserve.

## Share your Views

We want to hear from you. Your input will help shape the future of Poplar/Nanowin Rivers Park Reserve.

To obtain a comment sheet, please visit [www.manitobaparks.com](http://www.manitobaparks.com) or call Manitoba Conservation and Water Stewardship at 204-945-6784 or (toll free) 1-800-214-6497.

Your comments must be received no later than **February 20, 2012**.

You can email us directly at [parksystem@gov.mb.ca](mailto:parksystem@gov.mb.ca) or send your comments to:

### Park Reserves

Parks and Natural Areas  
 Box 53, 200 Saulteaux Crescent  
 Winnipeg, MB R3J 3W3  
 Fax: 204-945-0012