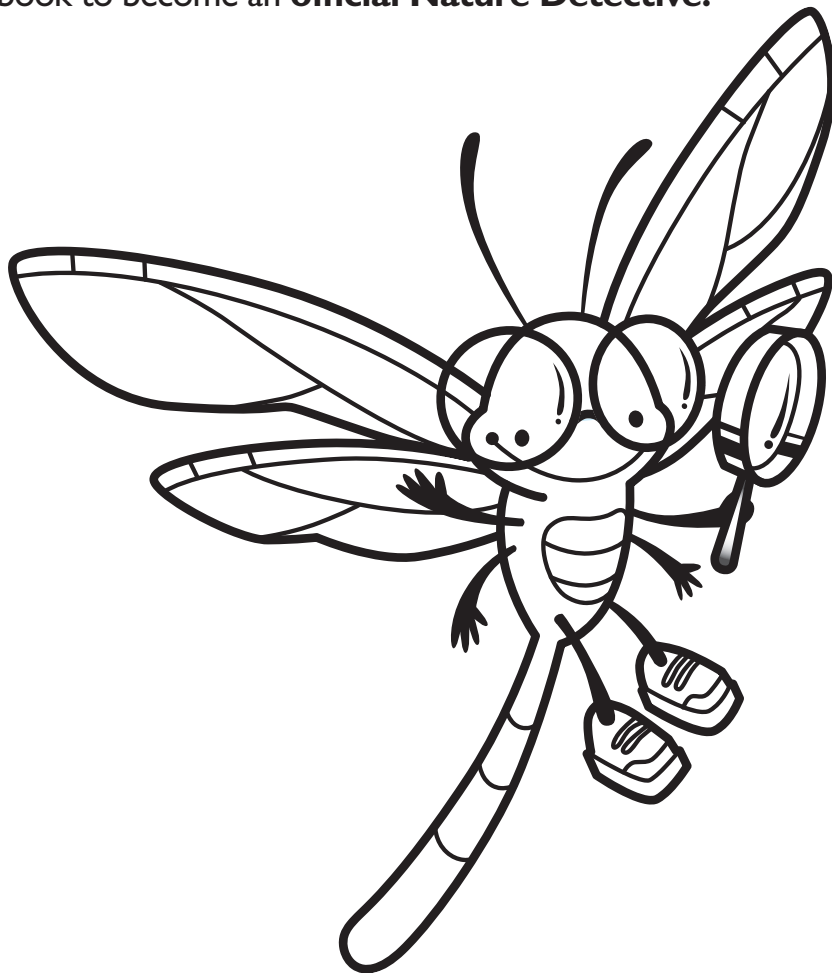


# MANITOBA PARKS Nature Detective

Ages 3-5

**Hi!** Would you like to become a Nature Detective just like Bolt the Dragonfly? Complete the activities in this booklet to discover more about Manitoba's provincial parks and the great ways for you to explore the outdoors. Once you are done, fill in the back page and return the book to become an **official Nature Detective!**



My name is

I am visiting

Provincial Park

What are your three favourite things to do in a park?

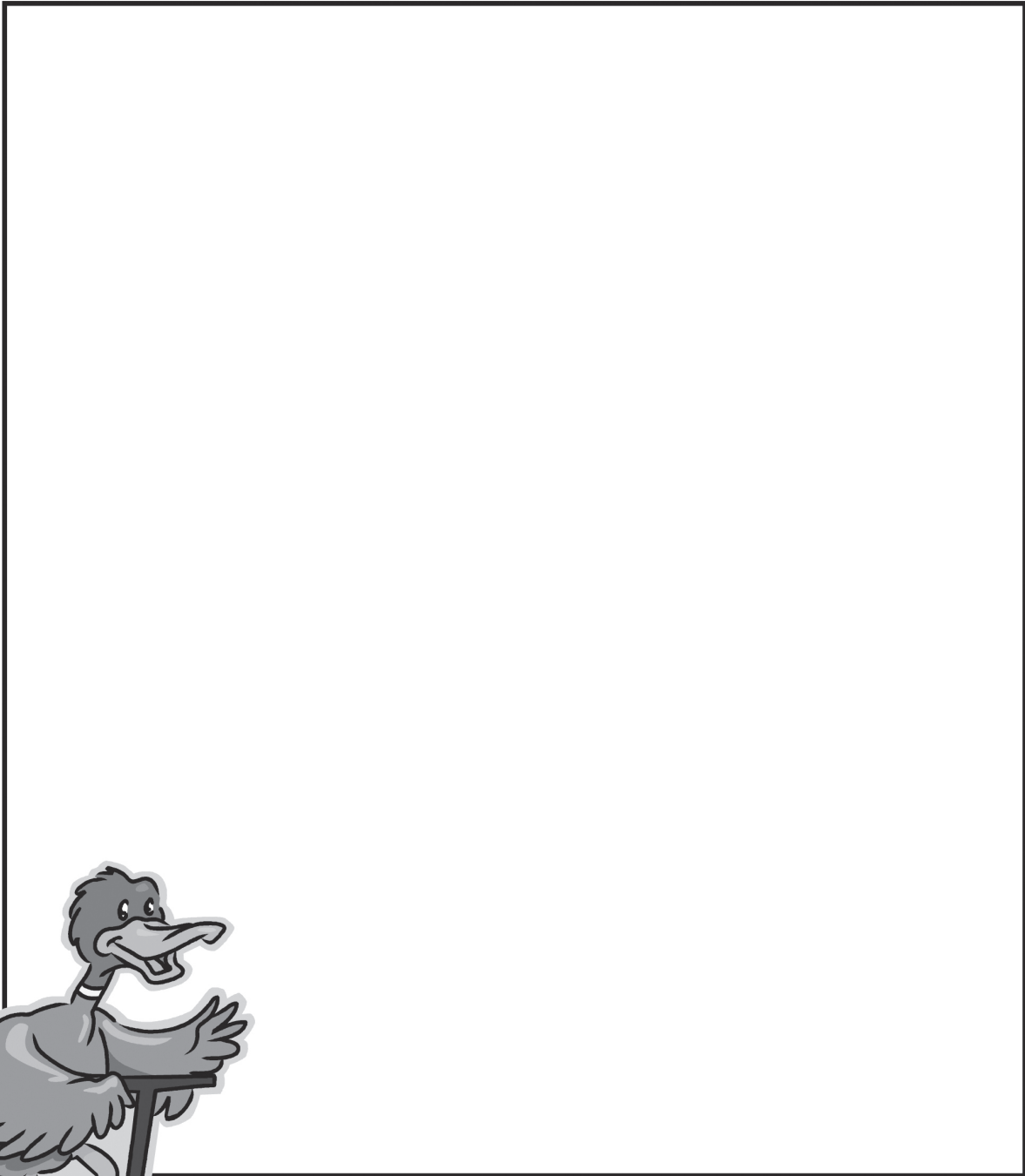
1)

2)

3)

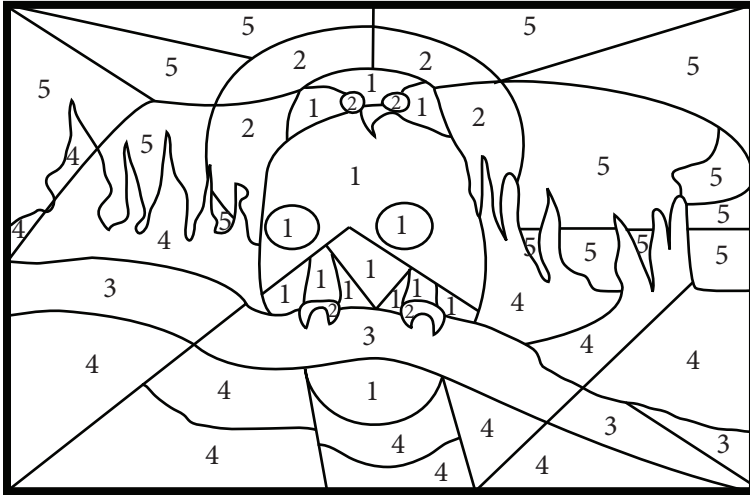
If you need further assistance in completing these activities, look for a Park Interpreter at park programs and interpretive centres for help.

Draw a picture of your favourite summer activities



# Colour By Number

Use the colour chart below to discover who is Manitoba's provincial bird.



<b>Gray</b>	<b>1</b>
<b>Yellow</b>	<b>2</b>
<b>Brown</b>	<b>3</b>
<b>Green</b>	<b>4</b>
<b>Black</b>	<b>5</b>

## Did you know?

The Great Gray Owl has a wingspan of 1.5 metres and can see 65 times better than the average person at night.

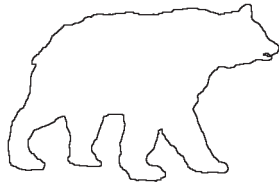
# Spot the Differences

Find 6 differences in the Smokey Bear images.

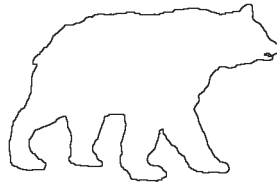


# A Bear of a Different Colour

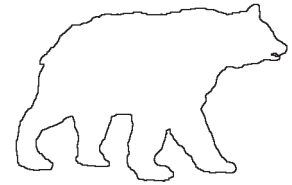
Black Bears don't live up to their name as they are not always black. Follow the labels below to colour the bears. Remember: if you see a bear stay calm and remember to tell an adult!



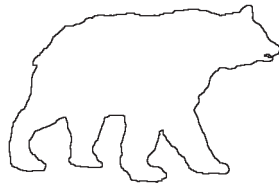
**Black**



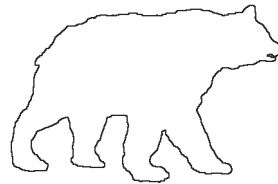
**Red (Cinnamon)**



**Brown**



**Blue (Gray)**

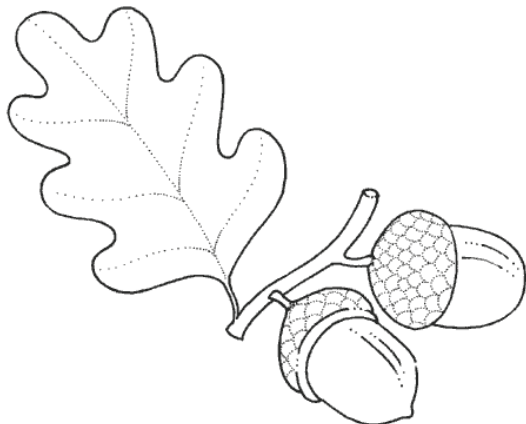


**Yellow (Blonde)**

Help the bears stay healthy – draw three things that are good for bears to eat (like berries, acorns or ants), and draw one thing that could make bears sick (like garbage).

## Leaf it to Me...

Leaves are food for many creatures that live in a park. Can you find a leaf that has been chewed by a creature? Place the leaf that you found under the page and using the edge of a crayon, rub over the leaf and it will appear on this side.



# Beach Safety Maze

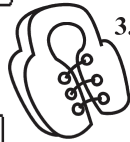
Make your way to the different images and learn the rules of the water.

START



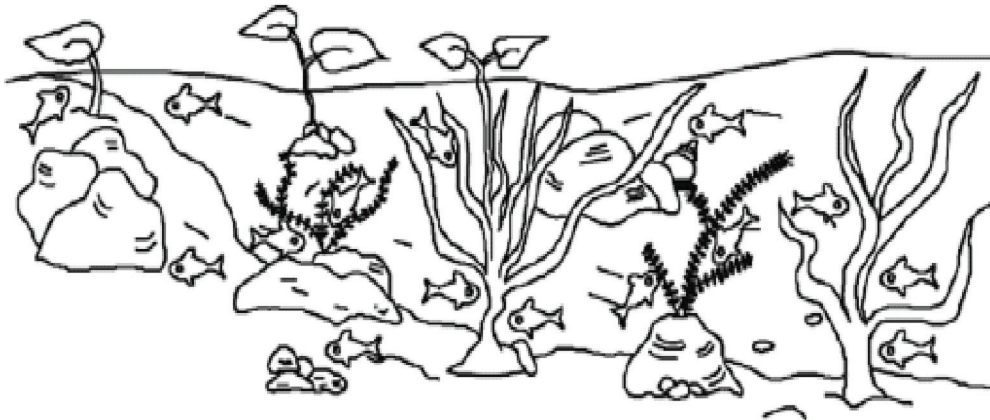
## BEACH SAFETY RULES:

- 1) Never dive in shallow or unfamiliar water
- 2) Learn to swim
- 3) Wear a lifejacket when in, on or around the water
- 4) Don't use toys as lifesavers
- 5) Make sure an adult is always watching you



# Fish Find

There are 15 fish swimming below. Can you find them all?

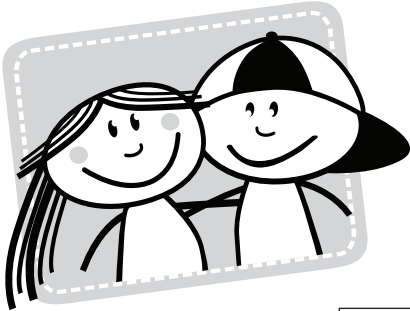


# Parks Bingo

Here's a game to play while you are traveling or on vacation this year. When you see one of the objects pictured in the BINGO card, mark it with a pencil or crayon. If more than one person is playing, the first to see the object marks it on their card. Bingo can be won by marking all objects on any straight or diagonal line, or by playing "black out" with all objects having to be marked.



# Nature Detective Crossword

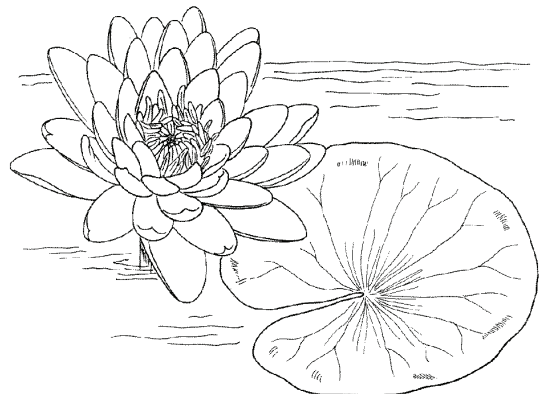
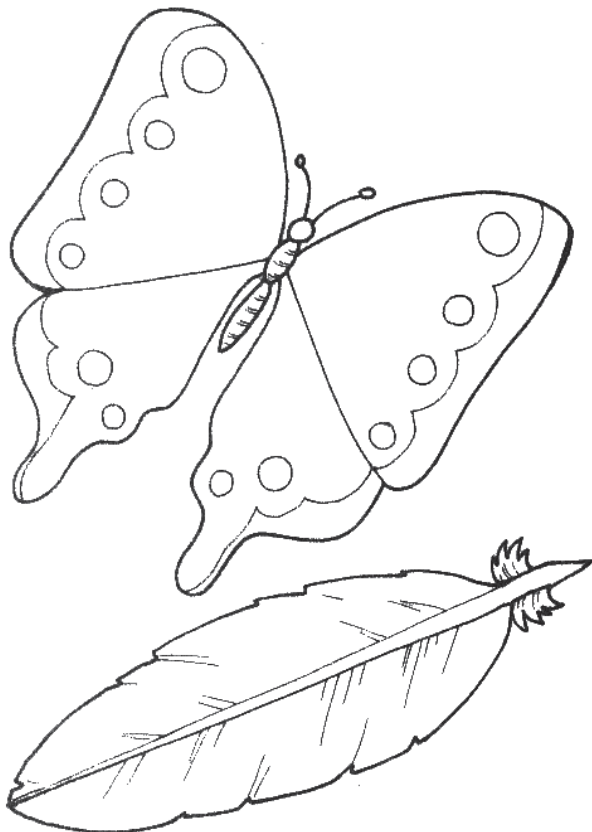


## Across

- 1) What game helps you to look for things in the Park?
- 4) What can help find your way to park?
- 5) What grows on a tree?
- 7) What is a way to remember your visit? You could \_\_\_\_\_ a picture.
- 8) What lives under the water?
- 9) What is a fun place to visit?

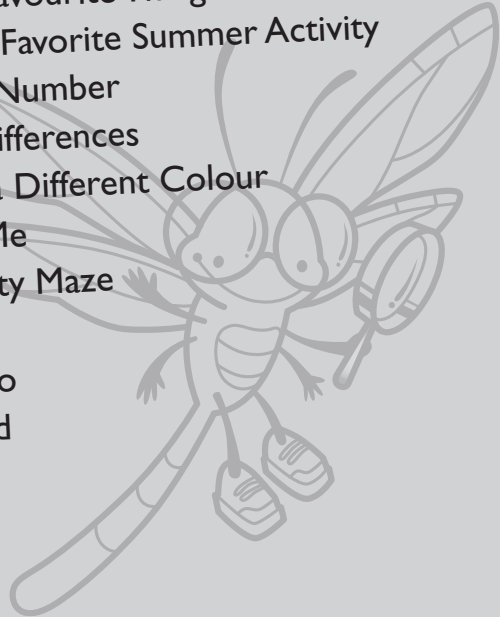
## Down

- 1) Where is a fun place to play (as long as you remember to be safe)?
- 2) What animal comes out at night?
- 3) What animal can be many colours?
- 6) What does Smokey Bear help to prevent?



## Nature Detective Checklist of Activities:

- My Three Favourite Things...
- Draw your Favorite Summer Activity
- Colour by Number
- Spot the Differences
- A Bear of a Different Colour
- Leaf it to Me
- Beach Safety Maze
- Fish Find
- Parks Bingo
- Crossword



Check off the boxes of each activity you have completed. Return the completed booklet to receive your official pin and certificate. (Your book will also be returned to you.)

Did you enjoy doing this activity book? If so, you can do other Junior Naturalist / Park Explorer books at the following locations:

Whiteshell  
Spruce Woods  
Birds Hill  
Hecla  
Grand Beach

Completed booklets can be returned to campground offices, park interpreters or mailed to the address below:

Nature Detective Program  
Head of Interpretation  
Parks and Natural Areas  
200 Saulteaux Crescent  
Winnipeg, MB, R3J 3W3

Nature Detective: \_\_\_\_\_

Adult: \_\_\_\_\_

## YOU ARE ALMOST AN OFFICIAL NATURE DETECTIVE!

Child's Name \_\_\_\_\_

Address \_\_\_\_\_

City \_\_\_\_\_

Province \_\_\_\_\_

Postal Code \_\_\_\_\_