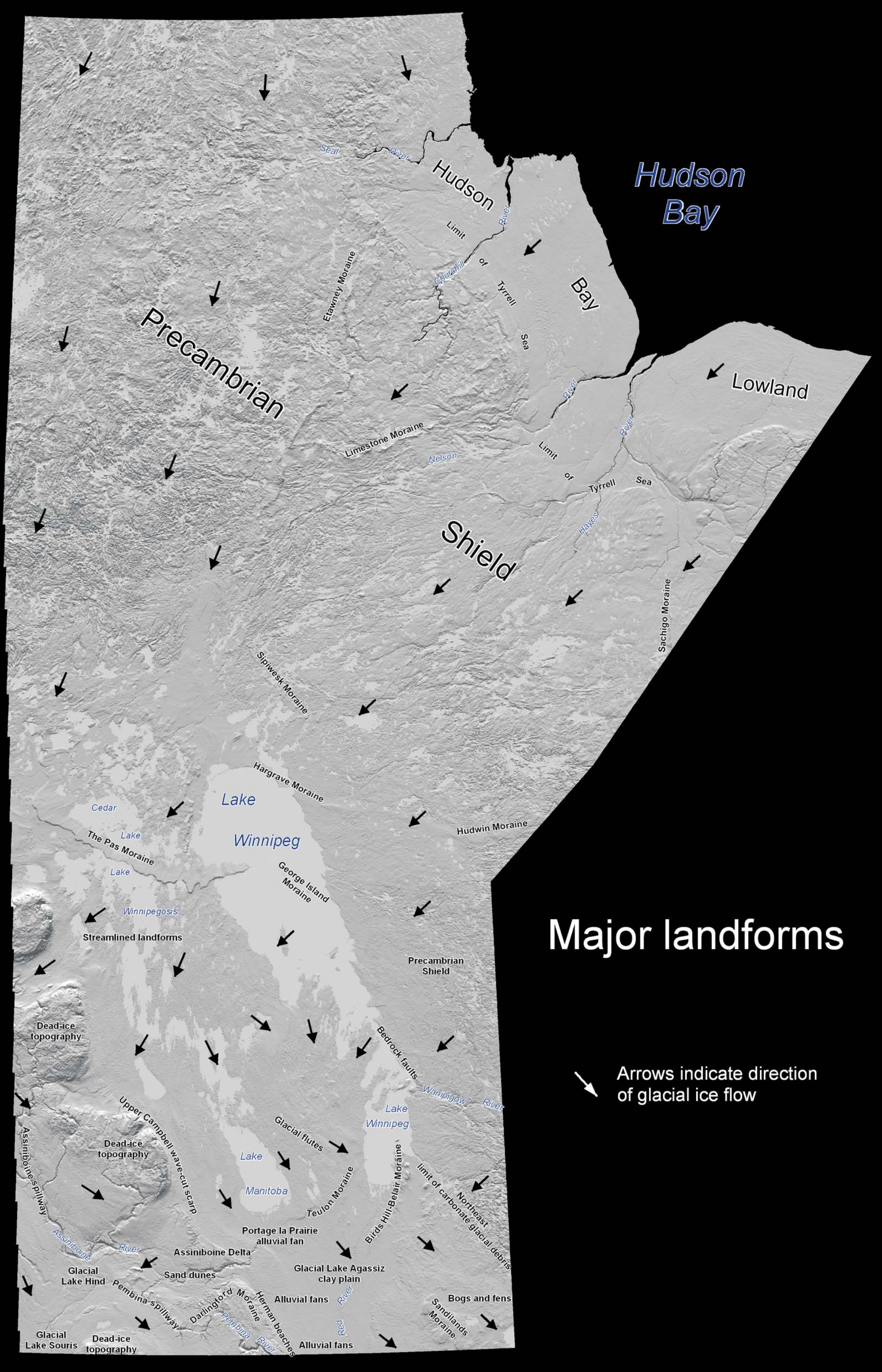


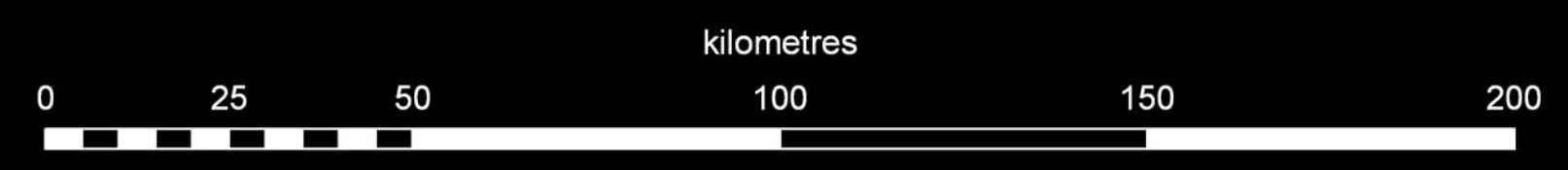
Geoscientific Map MAP2005-3  
3-D topography  
of  
Manitoba



Universal Transverse Mercator  
North American Datum 1983  
Zone 14  
120 Metre pixel

Copies of this map can be obtained from:  
Manitoba Industry, Economic Development and Mines  
Manitoba Geological Survey, Publication Sales  
360-1995 Elton Ave.  
Winnipeg, MB  
R2C 2P2  
Canada

Phone: (204) 944-4104  
Toll-free: 1-800-223-5213  
E-mail: [manishb@gov.mb.ca](mailto:manishb@gov.mb.ca)  
Available for free download at [www.gov.mb.ca/ednrimd](http://www.gov.mb.ca/ednrimd)



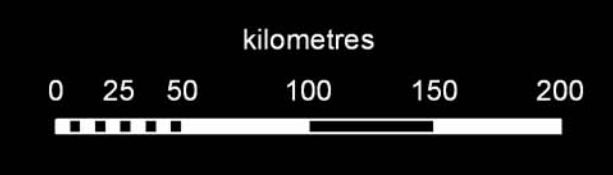
Further information about the SRTM can be obtained from  
NASA  
at <http://www.nasa.com>

Analysis created by:  
P. J. Moore  
National Center for Earth-surface Dynamics  
University of Minnesota  
Department of Geology and Geophysics

Published by:  
Manitoba Industry, Economic Development and Mines  
Manitoba Geological Survey, 2005.

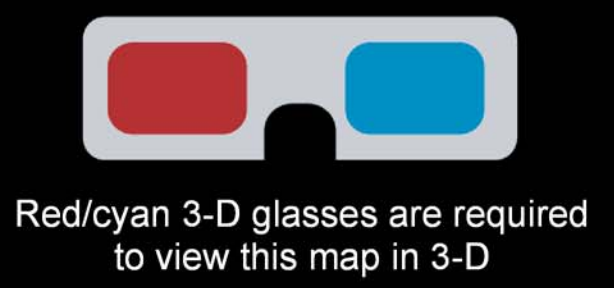
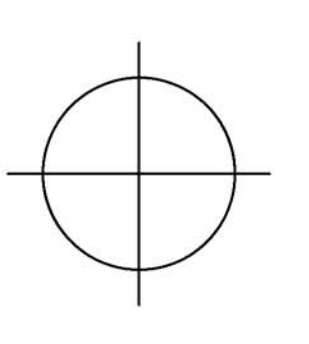
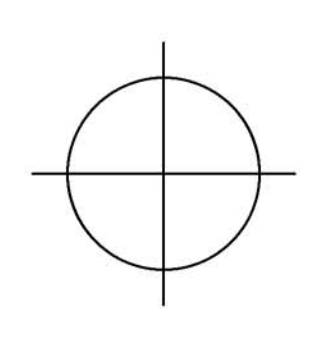
Suggested reference:  
Moore, P.J., Haines, G.L.D. and Keller, G.R. 2005. 3-D topography of Manitoba. Manitoba Industry, Economic Development and Mines,  
Manitoba Geological Survey, Geoscientific Map MAP2005-3, Scale 1:1 000 000.

Data derived from the Shuttle Radar Topography Mission (SRTM) was obtained from:  
United States Geological Survey 2002. Shuttle radar topography mission. Digital elevation model, Manitoba. United States Geological Survey,  
URL: <http://redcsp11.er.usgs.gov/pub/data/srtm/>, portions of files N48W85W.ngz.zip through N60W102.W.zip, 1.5 Mb (variable), 90 m cell,  
spaced .ngf format (Mar. 2003).

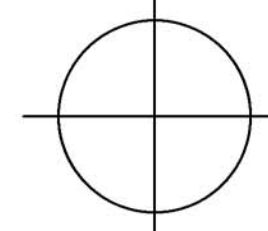


Major landforms

Arrows indicate direction  
of glacial ice flow



Red/cyan 3-D glasses are required  
to view this map in 3-D



UNIVERSITY  
OF MINNESOTA

