

LEGEND

ARCHAEO PROTEROZOIC	12	Quartz-feldspar porphyry
	11	Pink porphyritic granite
	10	Grey gneissic granite
	9	Quartz monzonite
	8	FALCON LAKE STOCK Diorite, gabbro
KEEWATIN	7	Mixed Keweenaw rocks and pegmatite
	6	Silicified basalt and tuff
	5	Clastic sedimentary and related rocks
	4	Basic tuff
	3	Basic agglomerate
	2	State
	1	Andesite, basalt

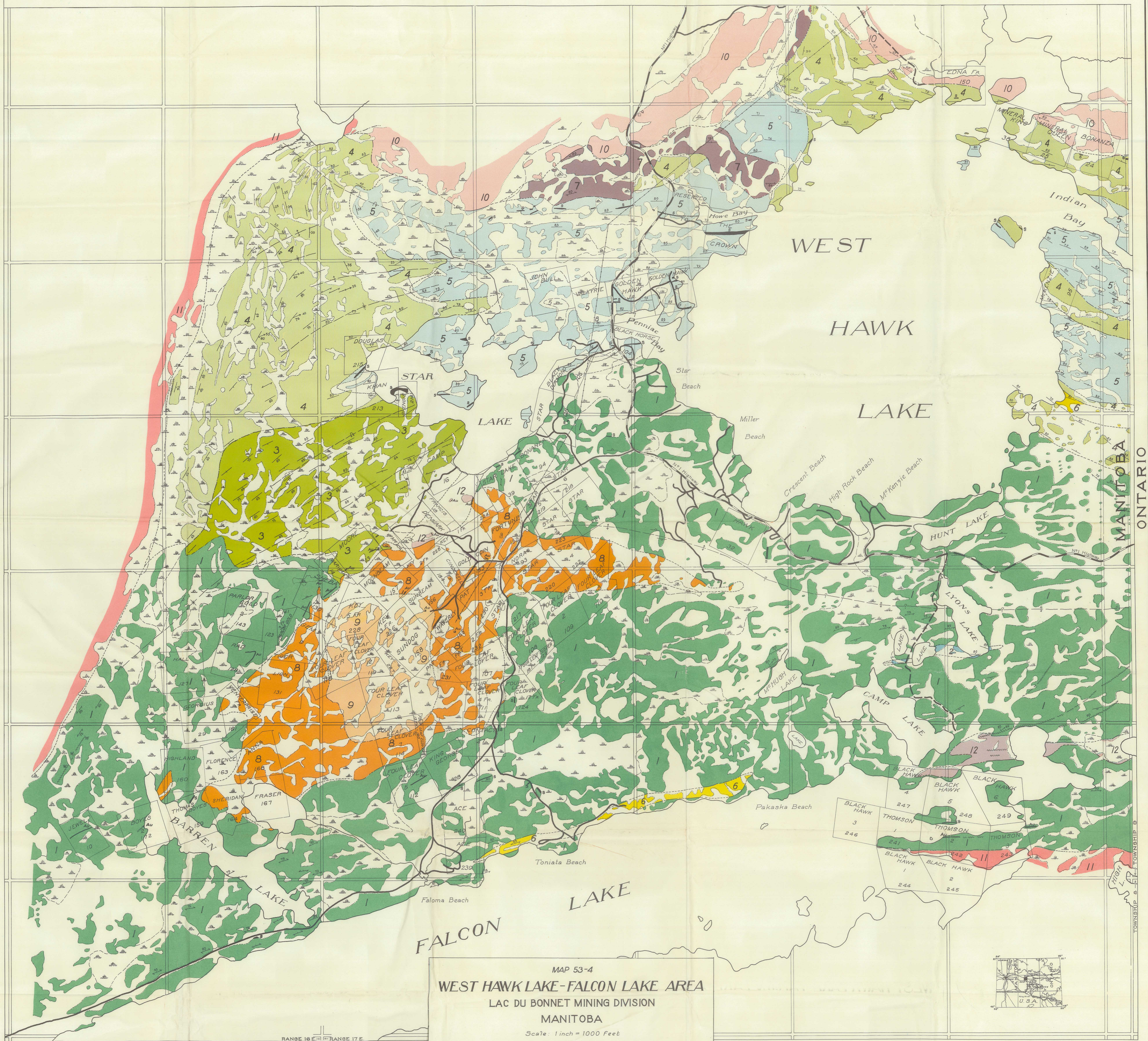
SYMBOLS

Area of outcrop	
Area of swamp and muskeg	
Geological boundaries (defined, assumed, gradational)	
Strike and dip of bedding	
Plunge of linear feature (indicated by arrow)	
Strike and dip of schistosity	
Synclinal axis (upright fold, overturned fold)	
Anticlinal axis (upright fold, overturned fold)	
Top of lava flows (pillows)	
Fault and/or shear zone	
Mineralized zone (S-sulphides, Au-gold, W-schistosity)	
Mine shaft	
Quarry	
No. 1 highway, Manitoba	
Improved earth or gravel road, trail	
Transmission line	

Approximate magnetic declination 4°30'E.
Decreasing 0°7'30" annually

Geology by J.F. Davies, 1953
(To accompany Mines Branch Publication 53-4)

Base map compiled from information supplied by Surveys Branch, consisting of surveys of Falcon Lake, Star Lake, and West Hawk Lake, road surveys and claim surveys, and from vertical aerial photographs.



MAP 53-4
WEST HAWK LAKE-FALCON LAKE AREA
LAC DU BONNET MINING DIVISION
MANITOBA

Scale: 1 inch = 1000 feet