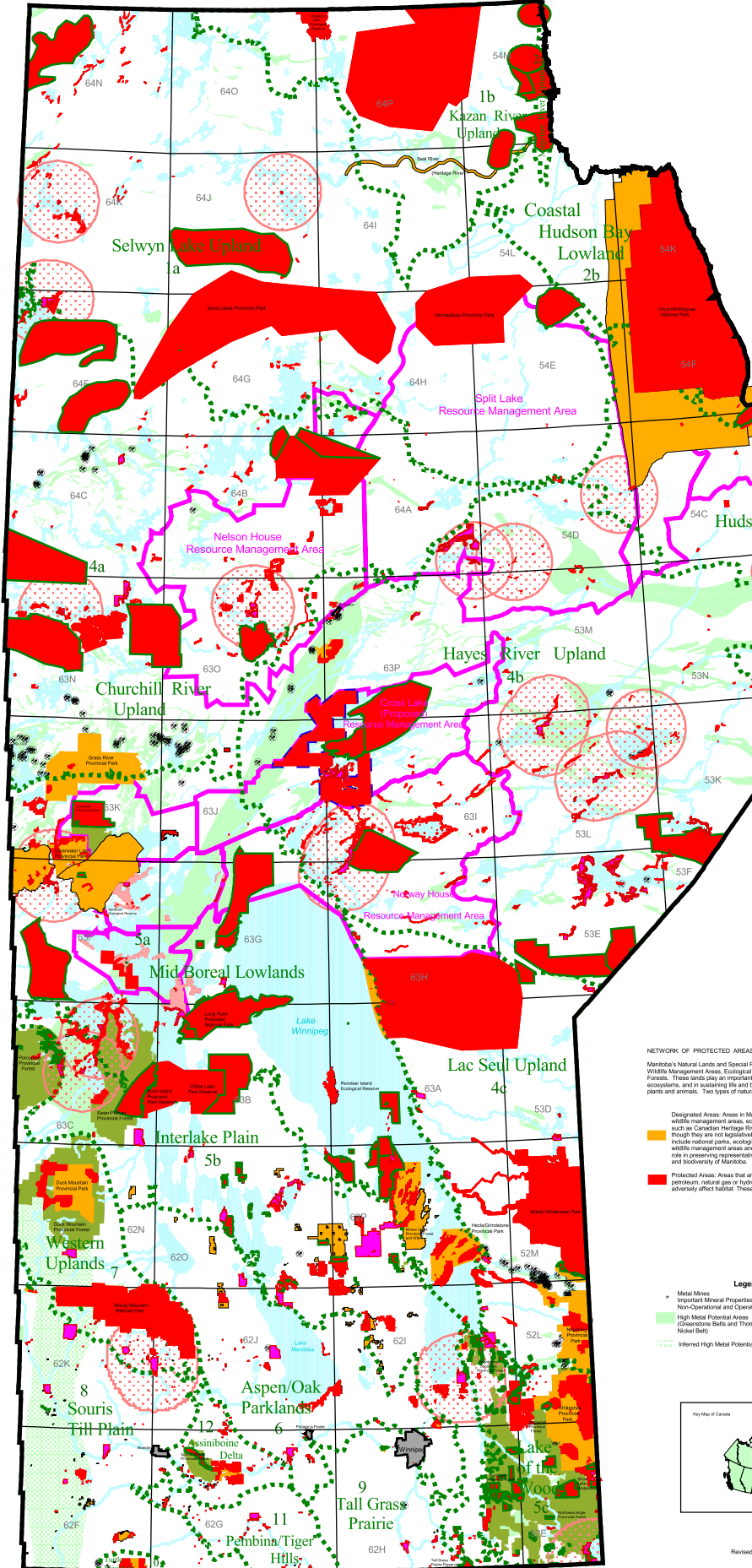


Land Access for Mineral Exploration and Development



INTRODUCTION - SUSTAINABLE DEVELOPMENT

Mining is Manitoba's second leading primary resource sector, after agriculture, and is a cornerstone of the provincial economy. Manitoba annually produces in excess of \$10 billion dollars worth of mineral product. The wealth generated from the mining sector helps pay for health, social, educational and environmental programs that improve the quality of life for Manitobans and, at the same time, provides the essential materials required for industrial civilization. Manitoba has utilized its natural resources including minerals to achieve one of the highest standards of living in the world.

The state of our environment is important to Manitobans, and the diversity of landscapes and ecosystems within the province warrant protection. Manitoba is committed to establishing a network of protected areas by the year 2020 that represents the province's natural regions. Logging, mining or the development of oil, petroleum, natural gas or hydro-electric power or other activities that significantly and adversely affect habitat are not permitted in protected areas. At least 12% of Manitoba will be set aside for this protected lands initiative.

ABOUT THE MAP

This map has been prepared in order to provide basic land use and tenure information affecting land access for mineral exploration and development in Manitoba. Land use encumbrances, including provincial lands where mining activity is legally banned, have been highlighted. Other sensitive lands where mineral exploration can be accommodated have also been documented. This summarizes current land use and tenure information, which is compiled by Mines Branch in an up to date and authoritative format and on an ongoing basis. Such information is made available to mineral explorationists so they can effectively plan exploration programs.

For further details contact Chuck Jones, Resource Management Geologist
 Unit 390 1205 Elbow Avenue, Winnipeg, Manitoba, R2G 3P2
 Phone: (204)465-6519 or Fax: (204)465-6427 or email: cge@pegg.gov.mb.ca

LAND ACCESS

Mineral deposits are non-renewable and the mining industry must continually discover and develop new economically viable deposits in order to maintain production levels. Ongoing access to lands with mineral potential for mineral exploration and development purposes and certainty of tenure for viable deposits are major components of maintaining a viable mining industry. Single or conflicting land use designations create a climate of uncertainty and are a serious impediment to attracting and retaining mineral exploration. Every effort is being made by the Province to processing plan resource allocation in a rational manner, which minimizes such uncertainty.

FIRST NATIONS LANDS

The Government of Manitoba and Canada have outstanding land settlement obligations to the First Nations in Manitoba. Land selections made by First Nations initiated under the Treaty Land Entitlement (TLE) or Northern Flood Agreement (NFA) will be converted into Indian Reserves.

NETWORK OF PROTECTED AREAS

Manitoba's Natural Lands and Special Places included Federal and Provincial Parks, Wildlife Management Areas, Ecological Reserves, Heritage Rivers and Provincial Forests. These lands play an important role in preserving representative landscapes and ecosystems, and in sustaining life and biodiversity by supporting a variety of native plants and animals. Two types of natural lands occur:

- Designated Areas: Areas in Manitoba include national and provincial parks, wildlife management areas, ecological reserves and provincial forests. Some areas, such as Canadian Heritage Rivers, receive special management considerations even though they are not legislatively designated. Manitoba's network of protected areas will include national parks, ecological reserves, parks, or, or entire provincial parks, wildlife management areas and provincial forest. Protected lands play an important role in preserving representative landscapes and ecosystems and in sustaining life and biodiversity of Manitoba.
- Protected Areas: Areas that are free from logging, mining or the development of oil, petroleum, natural gas or hydro-electric power or other activities that significantly and adversely affect habitat. These lands contribute to Manitoba's protected area initiative.

Legend

- Metal Mines
- Important Mines/Properties
- Non-Operational and Operational
- High Metal Potential Areas
- Greenstone Belts and Thompson Nickel Belt
- Inferred High Metal Potential Areas
- Natural Region Boundary
- Provincial Forests

Key Map of Canada



- Existing First Nations Reserve Lands
- Treaty Land Entitlement (TLE) and Northern Flood Agreement (NFA)
- Lands selected by First Nations for Treaty Land Entitlement and Northern Flood Agreement are not generally available for mineral exploration. Approval for mineral exploration must be given by the appropriate First Nations band.
- Community Interest Zones (CIZ)
- Explorations may stake, develop mineral claims and obtain mineral leases within lands identified as Community Interest Zones. Exploration permits must however be reviewed and approved by affected First Nations.
- Northern Flood Hold Areas
- Land compensation for outstanding claims for flooding damage will be turned over to First Nations to become reserve land. Mineral exploration is generally not permitted within these hold areas. Approval for mineral exploration must be granted by the appropriate First Nations Band.
- Resource Management Areas
- Resource co-management areas and boards are currently being established to provide advice on resource use and allocation issues within the resource management area. Although notification of mineral exploration is not a legal obligation it is recommended.

COMMITMENT TO SUSTAINABLE DEVELOPMENT

Manitoba's commitment to "Sustainable Development" in the minerals sector is incorporated in The Mines and Minerals Act. The Department of Energy and Mines has developed a Minerals Strategy and implemented a land use program towards meeting the goals of the department's strategic plan.

- Program goals are:
- To provide fair and equitable access to land with mineral potential;
 - To provide legal protection for mineral dispositions, mining rights and lands with high mineral potential;
 - To minimize conflicts by avoiding incompatible land use allocations;
 - To improve security of tenure for the mining industry; and
 - To provide increased certainty in the permitting process.
- Program initiatives include:
- A comprehensive departmental land use and mineral evaluation review process;
 - Effective participation in interdepartmental land use review processes for both private and crown lands;
 - Developing an inventory of land use designations and mineral tenure information and;
 - Maintaining up-to-date land use data to assist industry in planning exploration programs.