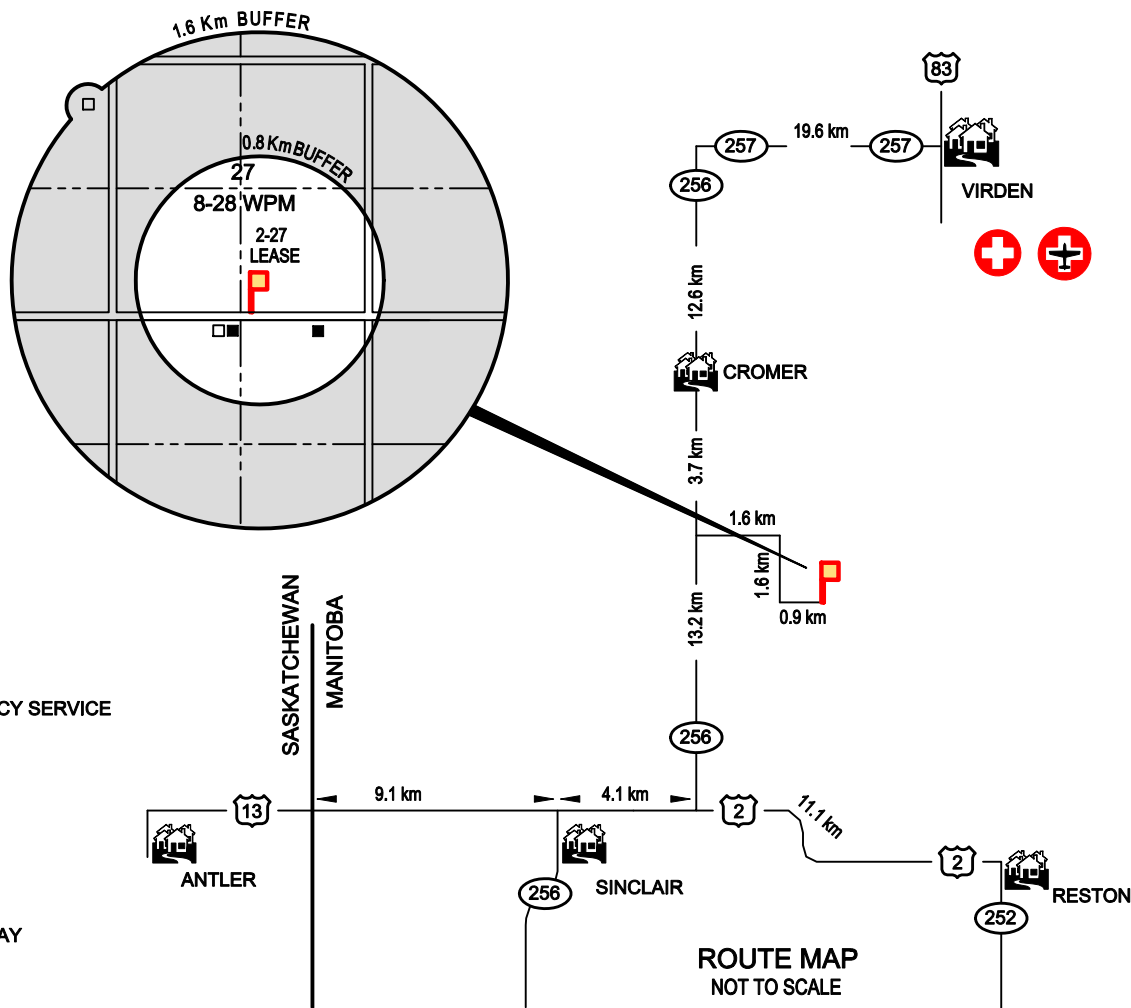


BLACK GOLD SINCLAIR 2-27-8-28WPM

WELL SITE AND ACCESS ROAD
 WELL SITE SURFACE LOCATION
 LSD. 2 - SEC. 27 - TWP. 8 - RGE. 28WPM
 R.M. of PIPESTONE



RESIDENCE SKETCH

- RESIDENCE
- ABANDONED RESIDENCE

LEGEND

- HOSPITAL
- LIFE FLIGHT EMERGENCY SERVICE
- SECONDARY HIGHWAY
- PRIMARY HIGHWAY
- MUNICIPAL ROAD
- TRANSCANADA HIGHWAY

ROUTE MAP NOT TO SCALE

LEGEND:

Distances are in metres. SCALE: 1:5000

Portions referred to shown thus:

Legal Survey Posts (found / placed)

Planted Wood Hub

Fence Lines

Oil / Gas Lines

Overhead Power Lines

Buried Power Cables

Buried Telecom Cables

Bush

Low Area / Slough

Water Covered Area

Surveyed Well Centre

Standing Well

Producer

Abandoned Producer

Abandoned Dry

Injection Well

Injection Well (Former Producer)

Abandoned Water Injection

Abandoned Water Injection (Former Producer)

Salt Water Disposal

Salt Water Disposal (Former Producer)

Abandoned Salt Water Disposal

Abd. Salt Water Disposal (Former Prod.)

Dual Completion

Abandoned Dual Completion

Junked and Abandoned

Surface Location - Horizontal / Directional / Slant

Water Supply Well

Abandoned Water Supply Well

Abandoned Structure Test Hole

OPERATOR:

BLACK GOLD ENERGY LTD.

WELL LICENCE INFORMATION

THE PROPOSED WELL CENTRE IS:

	YES	NO
-At least 1.5 km from the Corporate Limits of a City, Town or Village	<input type="checkbox"/>	<input type="checkbox"/>
- At least 75m from any shoreline	<input type="checkbox"/>	<input type="checkbox"/>
-At least 75m from any Surface Improvements	<input type="checkbox"/>	<input type="checkbox"/>
-At least 45m from any surveyed road	<input type="checkbox"/>	<input type="checkbox"/>
-At least 75m from any aircraft runway or taxiway	<input type="checkbox"/>	<input type="checkbox"/>
-At least 75m from any water well	<input type="checkbox"/>	<input type="checkbox"/>
-Approximately 5.7 km from the nearest urban centre (Cromer)	<input type="checkbox"/>	<input type="checkbox"/>
-Approximately 0.3 km from the nearest residence (NW¼ 22-8-28)	<input type="checkbox"/>	<input type="checkbox"/>



FACILITIES SHOWN ON THIS PLAN ARE FOR INFORMATIONAL PURPOSES ONLY. PRIOR TO ANY CONSTRUCTION ON LEASE OR ACCESS ROAD, BLACK GOLD ENERGY LTD., MTS COMMUNICATIONS INC., MANITOBA HYDRO, AND MANITOBA HYDRO-GAS OPERATIONS MUST BE CONTACTED FOR LOCATION OF ANY UNDERGROUND FACILITIES THAT MAY EXIST.

There are no surface or underground improvements within 76m of well centre except as shown. OTHER FACILITIES MAY EXIST, OF WHICH WE WERE UNAWARE OF OR UNABLE TO LOCATE.

All distances shown are horizontal and at ground level.

All bearings are NAD 83 (Zone 14) UTM grid bearings.
The Combined Scale Factor derived is 0.999838

FIELD BOOK
V29
PAGE(S)
N/A

Surveyed by: CR
Drafted by: MT
Checked by: DAB

No.	DATE	DESCRIPTION	DWN	CKD
0	SEPT 26, 2008	ISSUED	MT	DAB

REVISIONS

LENNON TRILOGY
 PROFESSIONAL LAND SURVEYORS
 BRANDON / VIRDEN
 Phone (204) 748-6860 Fax (204) 748-6165
 Toll Free 1-877-748-6860

PLS
MEMBER

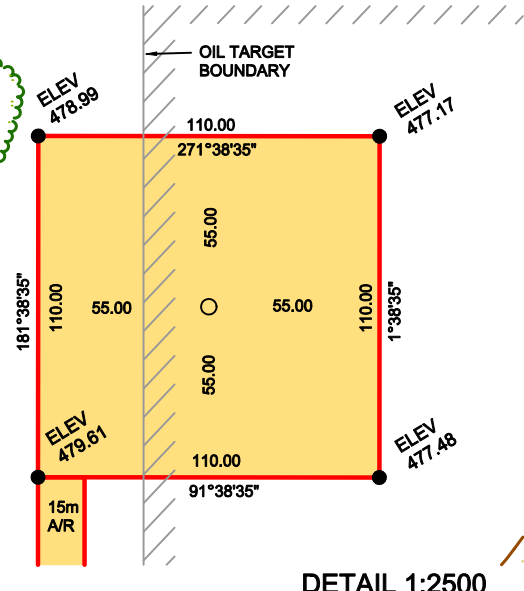
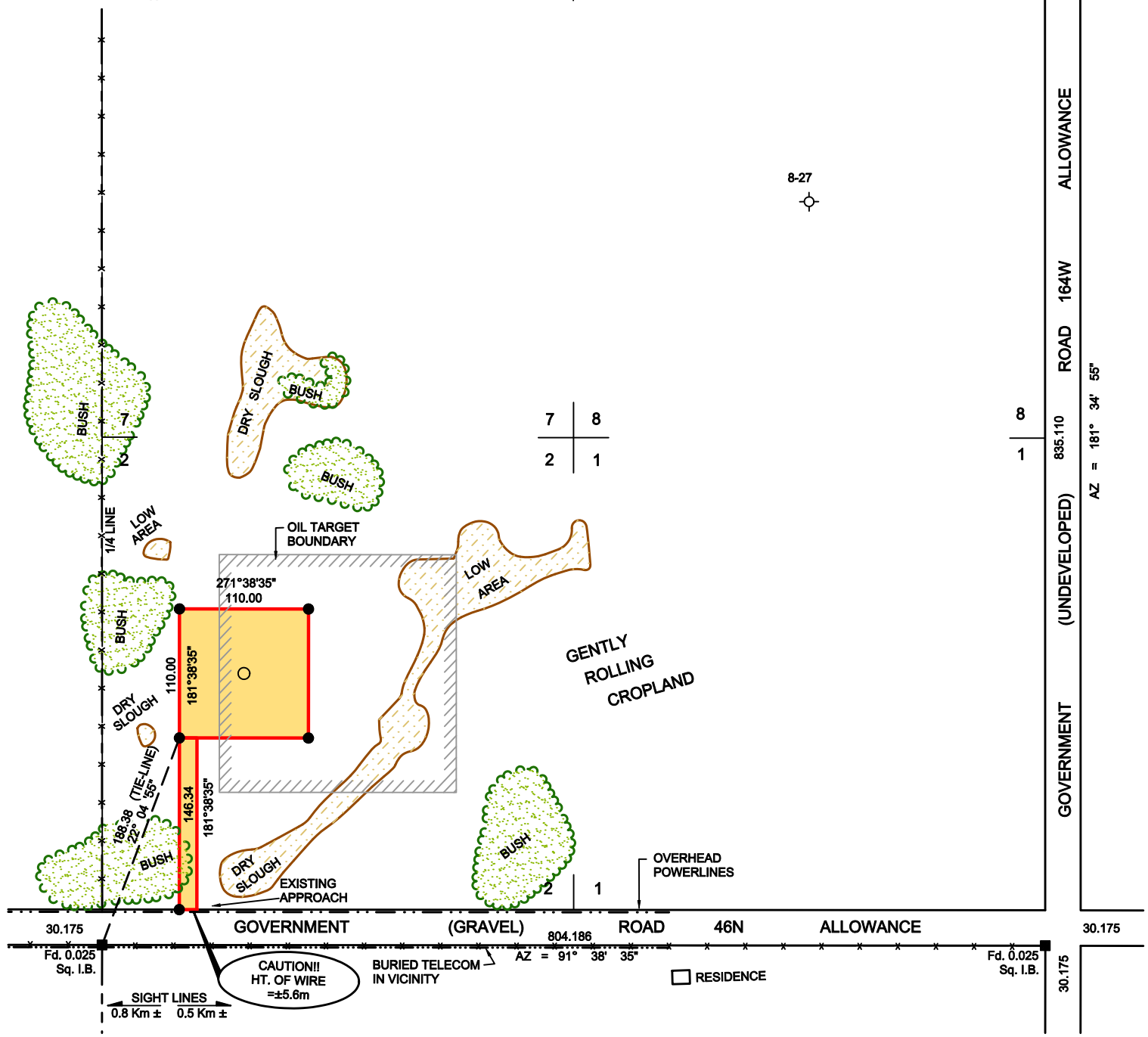
Client File: N/A
 NTS SHEET: 62 F/11
 LENNON TRILOGY File: V08647

8-27

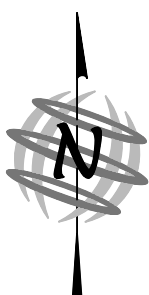
7 | 8
2 | 1

8

1



GIVEN CO-ORDINATES:
201.35 North of South
603.15 West of East
SURVEYED CO-ORDINATES:
201.35 North of South
683.15 West of East
REASON FOR MOVEMENT:
TOPOGRAPHY



LOCAL CO-ORDINATES
201.35 N of S } Sec 27
683.15 W of E }
UTM CO-ORDINATES (NAD 83)
5505619.558 N } CSRS
341303.737 E }
UTM CO-ORDINATES (NAD 27)
5505399.740 N } CSRS
341332.110 E }
LATITUDE / LONGITUDE(LL83)
49°40'55.881" } CSRS
101°11'59.905" }

CERTIFICATE OF TITLE
SE¼ 27-8-28 CT No. 191845

WELL CENTRE ELEVATION: 478.91
Elevations shown are in Geodetic Datum from the Province of Manitoba Mon. #82R754

AREAS:

WELL SITE	1.210 ha	2.99 ac
ACCESS ROAD	0.220 ha	0.54 ac
TOTAL	1.430 ha	3.53 ac

I certify that the survey represented by this plan is correct to the best of my knowledge and was completed on the 25th day of September, 2008.