

AREAS:

GAS PLANT SITE	3.785 ha	9.35 ac
<b>TOTAL</b>	<b>3.785 ha</b>	<b>9.35 ac</b>

CERTIFICATE OF TITLE

NE 1/4 21-1-25WPM CT No. 2137887

Owner(s): Blayne Thomas Temple  
Owner(s): Debra Ann Temple

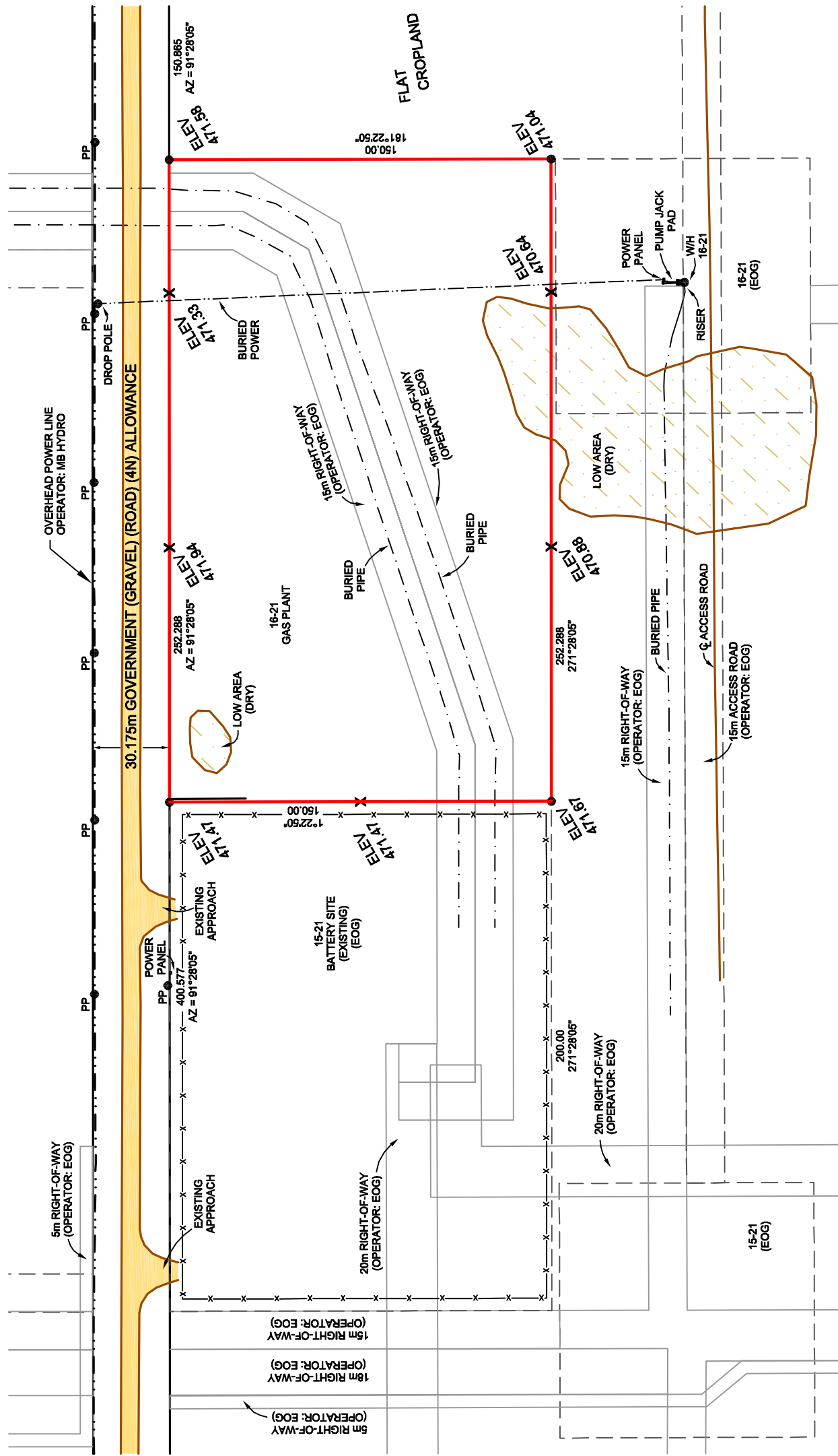
Elevations shown are in Geodetic Datum from the Province of Manitoba Mon. #82R708

I certify that the survey represented by this plan is correct to the best of my knowledge and was completed on the 3rd day of September, 2010.

*Ken W. Bailey*  
KEN W. BAILEY  
MANITOBA LAND SURVEYOR  
MEMBER  
*[Signature]*  
Witness

NOTE:

- Rev. 1 - Sept. 7, 2010: Revised Areas
- Rev. 2 - Sept. 13, 2010: Extended Lease East
- Rev. 3 - Oct. 5, 2010: Remove boundary between existing and extension
- Rev. 4 - Jan. 12, 2011: Show 16-21 Gas Plant as separate entity



NOTE:  
TIE FROM SE CORNER PROPOSED GAS PLANT LEASE TO:  
16-21 WELLHEAD AZ= 224°18'05" DIST= 71.34

DETAIL  
DETAIL 1:2000



Altus Geomatics  
Manitoba  
REVISION

EOG WASKADA 16-21-1-25WPM  
PROPOSED GAS PLANT