

CROSSING TABLE

Drawing No.	Description	Status	Location
X1	Undeveloped Government Road (150W) Allowance	Issued Rev.0	Between S.E. 20-1-26WPM & S.W. 20-1-26WPM
X2	Same	Issued Rev.0	S.W. 20-1-26WPM
X3	South River	Issued Rev.0	Between N.E. 19 & S.E. 20-1-26WPM
X4	Undeveloped Government Road (4N) Allowance	Issued Rev.0	Between N.E. 19 & S.E. 20-1-26WPM
X5	Undeveloped Government Road (150W) Allowance	Issued Rev.0	Between N.E. 19 & N.W. 20-1-26WPM
X6	Government Road (4N) Allowance (J.G.R.)	Issued Rev.0	Between N.E. 19 & S.E. 20-1-26WPM
X7	Government Road (150W) Allowance (J.G.R.)	Issued Rev.0	Between S.W. 29 & S.E. 20-1-26WPM
X8	Low Run (24m. Wide)	Issued Rev.0	S.W. 20-1-26WPM
X9	Natural Drainage (4m. Wide)	Issued Rev.0	S.W. 20-1-26WPM
X10	Low Run (4m. Wide)	Issued Rev.0	S.W. 20-1-26WPM
X11	Natural Drainage (3m. Wide)	Issued Rev.0	S.E. 20-1-26WPM
X12	Overhead Power Line - Operator: MB Hydro	Issued Rev.0	S.E. 20-1-26WPM
X13	Buried Water Line - Operator: RM of Arthur	Issued Rev.0	S.E. 20-1-26WPM

The revision stated in the Status column refers to the Construction Plan revision.

MLS AFFIDAVIT

I certify that the survey represented by this plan is correct to the best of my knowledge.

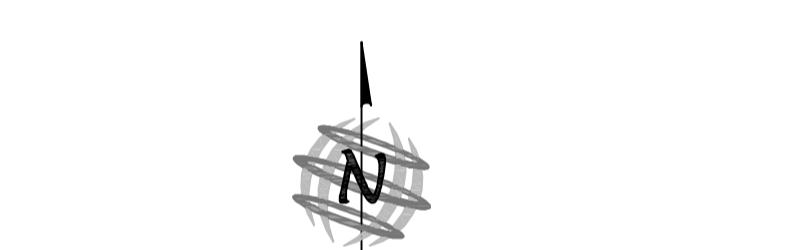
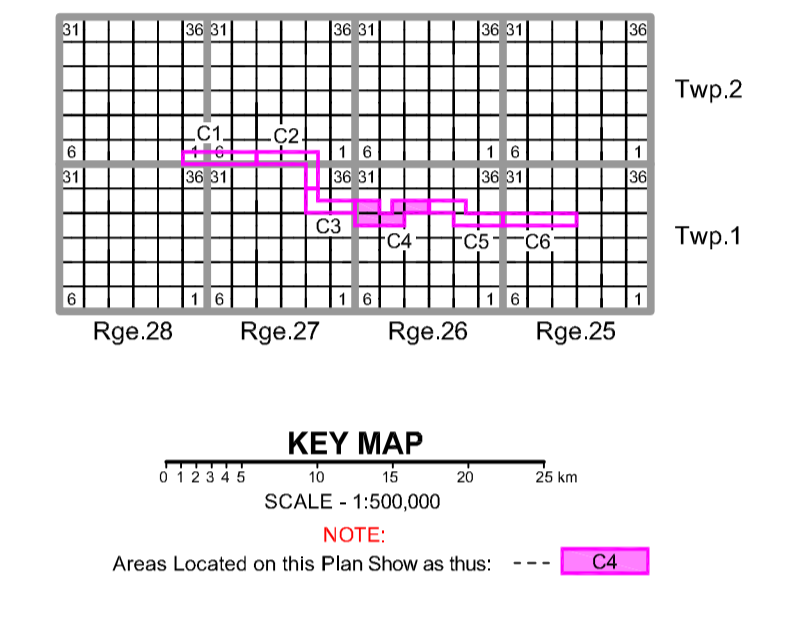
OPERATOR:
EDG RESOURCES CANADA INC.

Witness: _____

PIPE SPECIFICATIONS

Nominal Pipe Size	O.D.	mm.	Material	Pressure	Depth
150mm	152	6.0	Cast Iron	100 kPa	1.5m
100mm	102	4.0	Cast Iron	100 kPa	1.5m
75mm	76	3.0	Cast Iron	100 kPa	1.5m
50mm	51	2.0	Cast Iron	100 kPa	1.5m
30mm	32	1.25	Cast Iron	100 kPa	1.5m
20mm	21	0.75	Cast Iron	100 kPa	1.5m
15mm	16	0.6	Cast Iron	100 kPa	1.5m
10mm	11	0.4	Cast Iron	100 kPa	1.5m
8mm	9	0.35	Cast Iron	100 kPa	1.5m
6mm	7	0.25	Cast Iron	100 kPa	1.5m
4mm	5	0.15	Cast Iron	100 kPa	1.5m

Total length of right-of-way along posted boundary : 5.03 km
 Crossings associated with this drawing: 13
 Crossings plans required : 13
 (Crossing plans issued for bridge crossings only)



- #### LEGEND
- Placed Wooden Hub / Deflection Point shown thus:
 - 0.025 x 0.025 sq IP shown thus:
 - Survey Monuments Found shown thus:
 - Well heads found shown thus:
 - Marker Posts shown thus:
 - Counter Stank Posts shown thus:
 - Right- of -Way boundary shown thus:
- #### NOTES
- All Marker Posts placed are 0.3 metres inside the GRA unless shown otherwise.
 - Right-of-way to be filed is 20.00 metres in perpendicular width throughout unless shown otherwise.
 - Bearings are grid and are referred to UTM projection, NAD 83 (Zone 14) datum and are derived by Global Positioning System.
 - To the best of our knowledge the closest known Residence is 0.37 km.
 - To the best of our knowledge the closest known Surface Development (Residence) is 0.37 km.
 - The closest urban center is the Town of Couler 3.4 km. Northwest of the pipe line.
- #### DISCLAIMER
- This plan represents the best information available at the time of survey. Altus Geomatics Manitoba and its employees take no responsibility for the location of any underground pipes, conduits, or facilities, whether shown on or omitted from this plan. Facilities shown on this plan are for informational purposes only. Prior to any construction on lease or access road, EDG RESOURCES CANADA INC., MTS Communications Inc., Manitoba Hydro, and Manitoba Hydro-Gas Operations MUST be contacted for location of any underground facilities that may exist.

NO.	REVISIONS	INITIALS	DATE



CONSTRUCTION PLAN

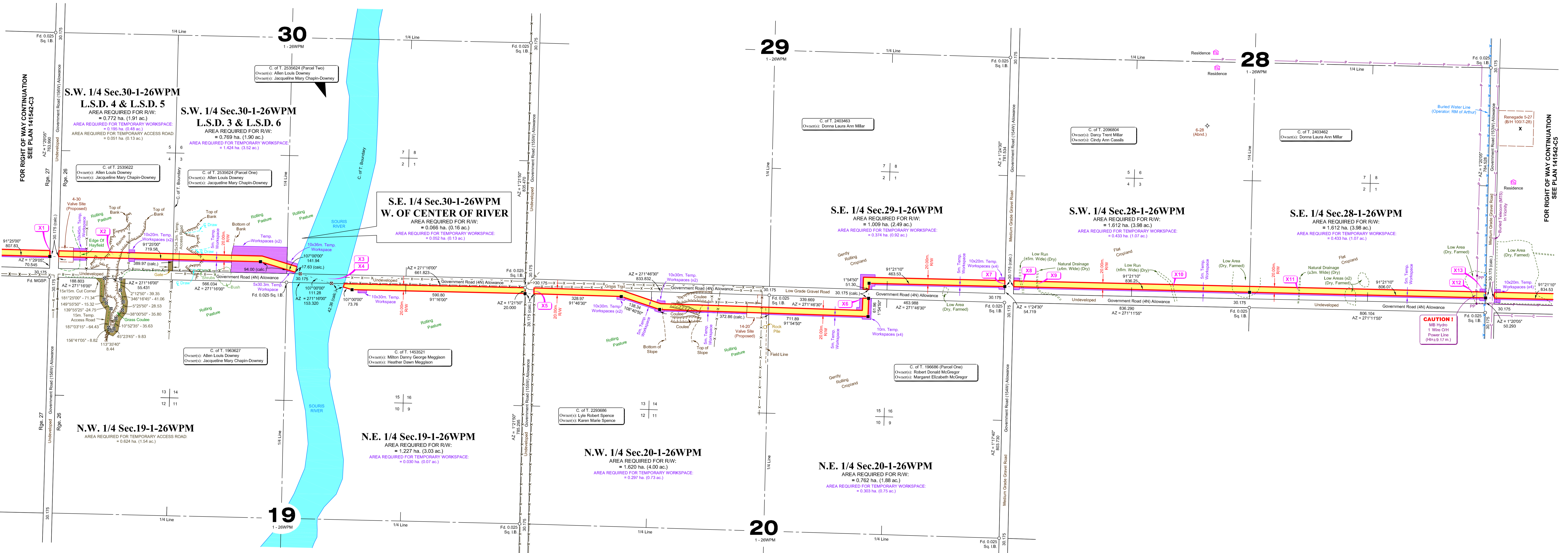
of

RIGHT-OF-WAY

In
 N. 1/2 Sec. 20,
 S. 1/2 Sec. 28,
 S.E. 1/4 Sec. 29
 &
 S. 1/2 Sec. 30
 Twp.1 - Rge.26WPM

Rural Municipality of Arthur
 2011

Scale - 1 : 5000



FOR RIGHT OF WAY CONTINUATION
 SEE PLAN 141542-C3

FOR RIGHT OF WAY CONTINUATION
 SEE PLAN 141542-C5

FOR RIGHT OF WAY CONTINUATION
 SEE PLAN 141542-C3