

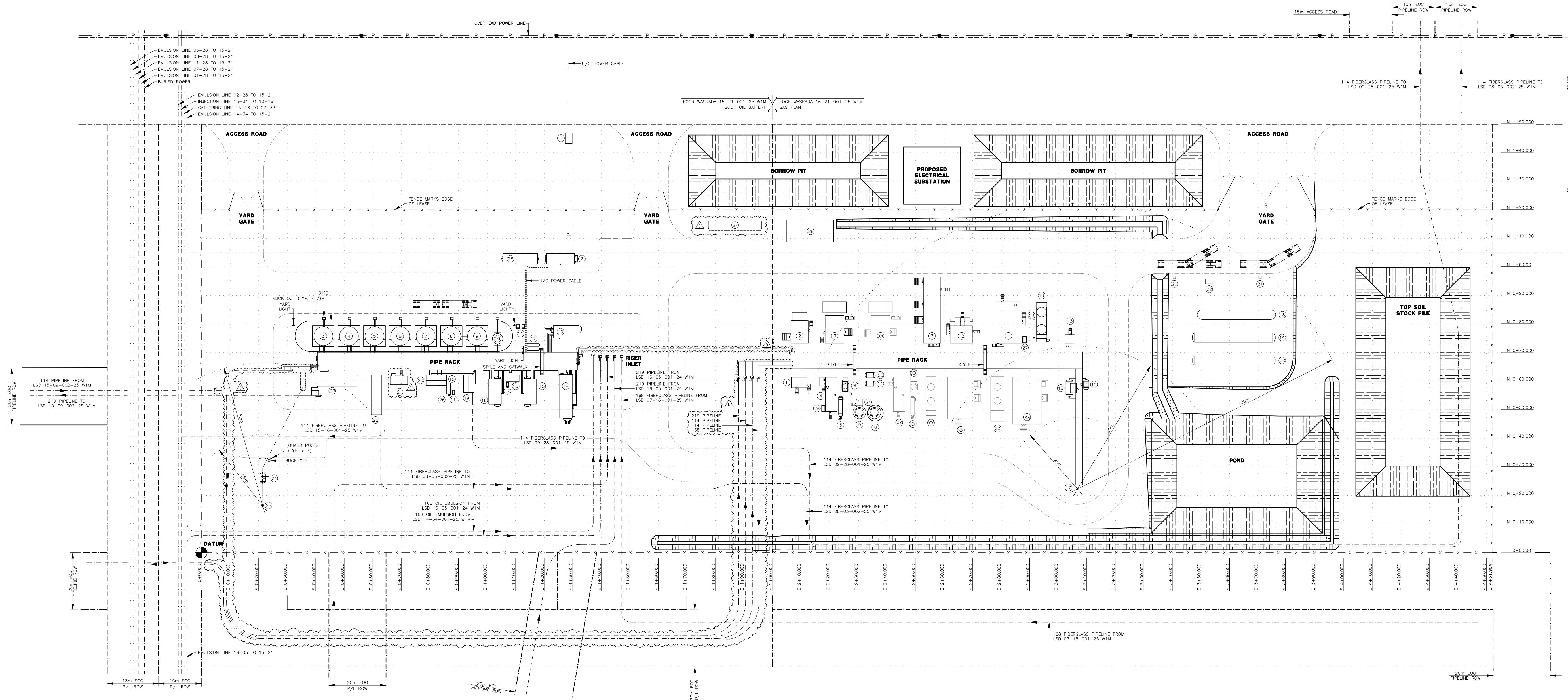


ITEM #	DESCRIPTION
1.	TRANSFORMER
2.	OFFICE/MCC BUILDING M-700
3.	SALES OIL TANK T-832
4.	SALES OIL TANK T-831
5.	SALES OIL TANK T-830
6.	EMULSION TANK T-821
7.	EMULSION TANK T-820
8.	PRODUCED WATER TANK T-811
9.	PRODUCED WATER TANK T-810
10.	POP TANK T-800

ITEM #	DESCRIPTION
11.	500 GAL. CHEMICAL TANK T-805/T-806 x 3
12.	PROPANE BULLET x 3
13.	TREATER BUILDING S-130
14.	FREE WATER INDOOR/OUT BUILDING S-120
15.	TREATER BUILDING S-100
16.	CUT SHACK K-210
17.	500 GAL. CHEMICAL TANK
18.	TREATER BUILDING S-110
19.	WATER DISPOSAL BUILDING U-510
20.	PUMP BUILDING U-500

ITEM #	DESCRIPTION
21.	WPI BUILDING K-200
22.	WATER PUMP SKID
23.	OIL PUMP BUILDING
24.	FLARE INDOOR/OUT DRUM R-600
25.	FLARE STACK R-610
26.	LOADING SKID
27.	OFFICE BUILDING
28.	OFFICE/FICE BUILDING M-701

NO.	DESCRIPTION
WD-03-PP-01-A	FOUNDATION PLAN
WD-02-PE-01-A	PIPING ELEVATION
WD-02-PP-01-A	PIPING PLAN



ITEM #	DESCRIPTION
1.	GROUP INLET SEPARATOR SKID (BU-2500)
2.	ELECTRIC BOOSTER COMPRESSOR (BU-2000)
3.	INLET COMPRESSOR #1 (BU-1-3000)
4.	AMINE SKID (BU-1-4000)
5.	AMINE REBOLLER (R-1-4230)
6.	AMINE COOLER (AE-1-4220/4130)
7.	V/A & MFC BUILDING (BU-9500)
8.	MAKE-UP WATER TANK (TK-4300)
9.	MAKE-UP WATER TANK (TK-4310)
10.	REFRIG. COOLER (AE-1-5150A/5150B/5200)

ITEM #	DESCRIPTION
11.	REFRIG PACKAGE #1 (BU-1-5000)
12.	PROCESS HEAT MEDIUM BLDG. (BU-7000)
13.	SALES & FUEL GAS METERING SKID (BU-1600)
14.	U/G FLOOR DRAIN TANK (TK-4000)
15.	A/G LOW PRESSURE FK00 (SK-8500)
16.	A/G HIGH PRESSURE FK00 (SK-8520)
17.	HIGH/LOW PRESSURE FLARE STACK (FS-8510)
18.	LPG BULLET #1 (U-7500)
19.	LPG BULLET #2 (U-7510)
20.	METER/BULKHEAD SKID #1 (SK-7760)

ITEM #	DESCRIPTION
21.	REFRIG PACKAGE #2 (BU-1-5000)
22.	LPG LOADING PUMPS SKID (SK-7750)
23.	REFRIG. ACCUMULATOR (V-1-5160)
24.	LPG MAKE-UP PUMP SHACK (BU-9000)
25.	U/G HYDROCARBON DRAIN TANK (TK-4550)
26.	AMINE DRAIN TANK (TK-9030)
27.	GLYCOL DRAIN TANK (TK-9020)
28.	PROPOSED SHIP
XX.	FUTURE EQUIPMENT

ENGINEER'S STAMP