

PENN WEST PETROLEUM LTD.

INDIVIDUAL OWNERSHIP PLAN

SHOWING

PIPELINE RIGHT OF WAY

IN

N.W. 1/4 SEC. 19 TWP. 1 RGE. 25 WPM

R.M. OF BRENDA

SCALE: 1:5000
PIPELINE #1



OWNER(S): LESLIE JAMES MCGREGOR

LEGEND

PORTIONS REFERRED TO SHOWN THUS

WORKSPACE AREA SHOWN THUS

SURVEY MONUMENTS FOUND SHOWN THUS

SURVEY MONUMENTS PLANTED SHOWN THUS

SURVEY MARKS (IRON SPIKES) PLANTED SHOWN THUS

DISTANCES ARE SHOWN IN METRES

DATE: 2013.03.19

CERTIFIED CORRECT:

TITLE NO.: 1699082/2

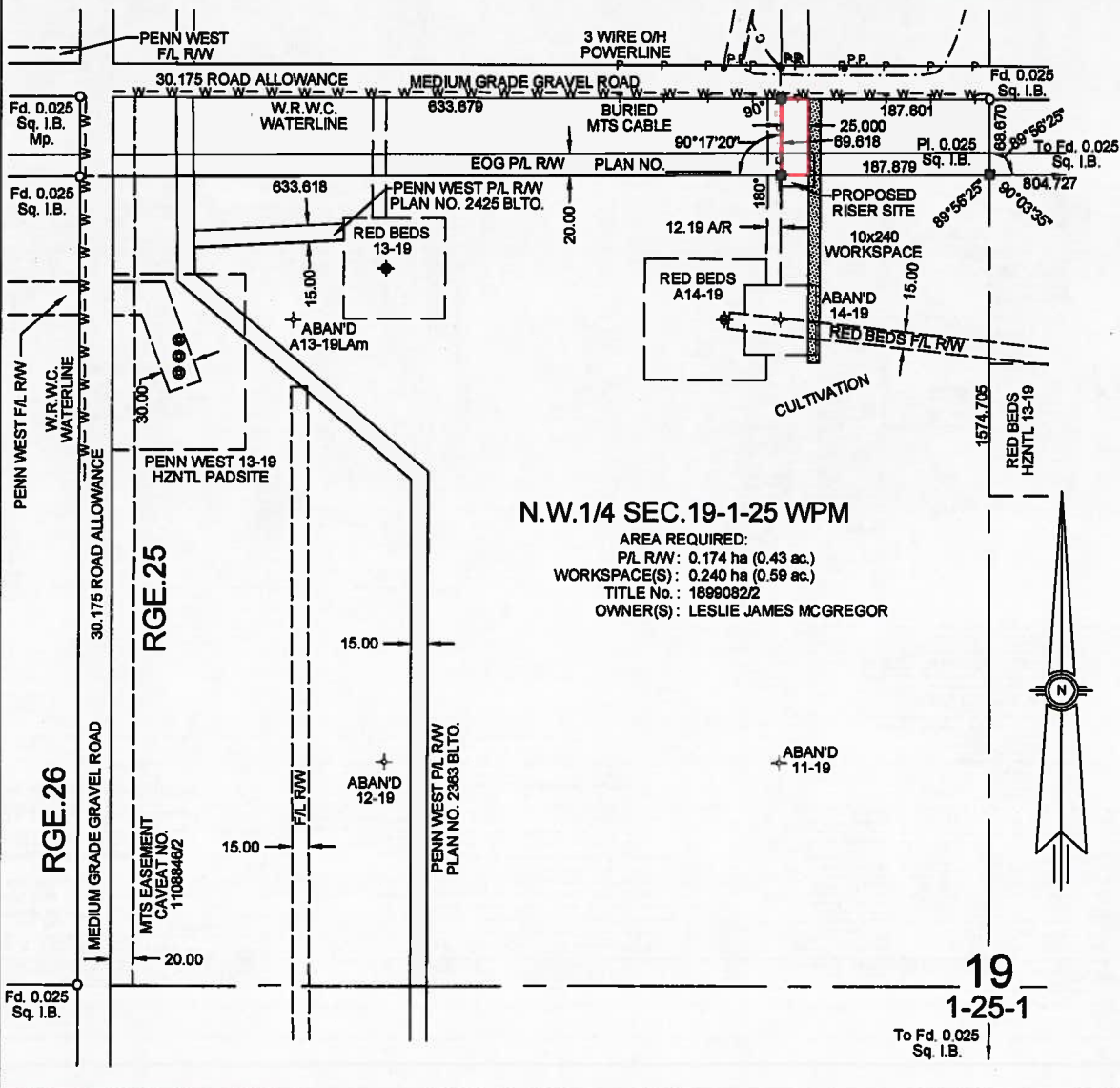
AREA REQ'D: 0.174 ha
0.43 ac.

Jade H. McLeod
JADE H. MCLEOD
MANITOBA LAND SURVEYOR



CALTECH
SURVEYS (MB)
Regina (306) Ph: 775-1814 Fax: 775-1818
Virden (204) Ph: 748-1053 Fax: 748-1059

CALTECH JOB NO.: 413-1074 413-1074101.DWG PWP FILE NO.: 13-0081		REV.	DATE	DESCRIPTION	DWG	CK'D
	0	2013.03.19		ISSUED	RF	CR



19
1-25-1
To Fd. 0.025
Sq. I.B.

PENN WEST PETROLEUM LTD.

INDIVIDUAL OWNERSHIP PLAN SHOWING PIPELINE RIGHT OF WAY








IN
S.W. 1/4 SEC. 30 TWP. 1 RGE. 25 WPM
R.M. OF BRENDA

SCALE: 1:5000
PIPELINE #1

OWNER(S): JP TREWIN FARMS LTD.

LEGEND

PORTIONS REFERRED TO SHOWN THUS 
 WORKSPACE AREA SHOWN THUS 
 SURVEY MONUMENTS FOUND SHOWN THUS 
 SURVEY MONUMENTS PLANTED SHOWN THUS 
 SURVEY MARKS (IRON SPIKES) PLANTED SHOWN THUS 
 DISTANCES ARE SHOWN IN METRES
 DATE: 2013.03.19
 CERTIFIED CORRECT:

TITLE NO.: 1579661/2

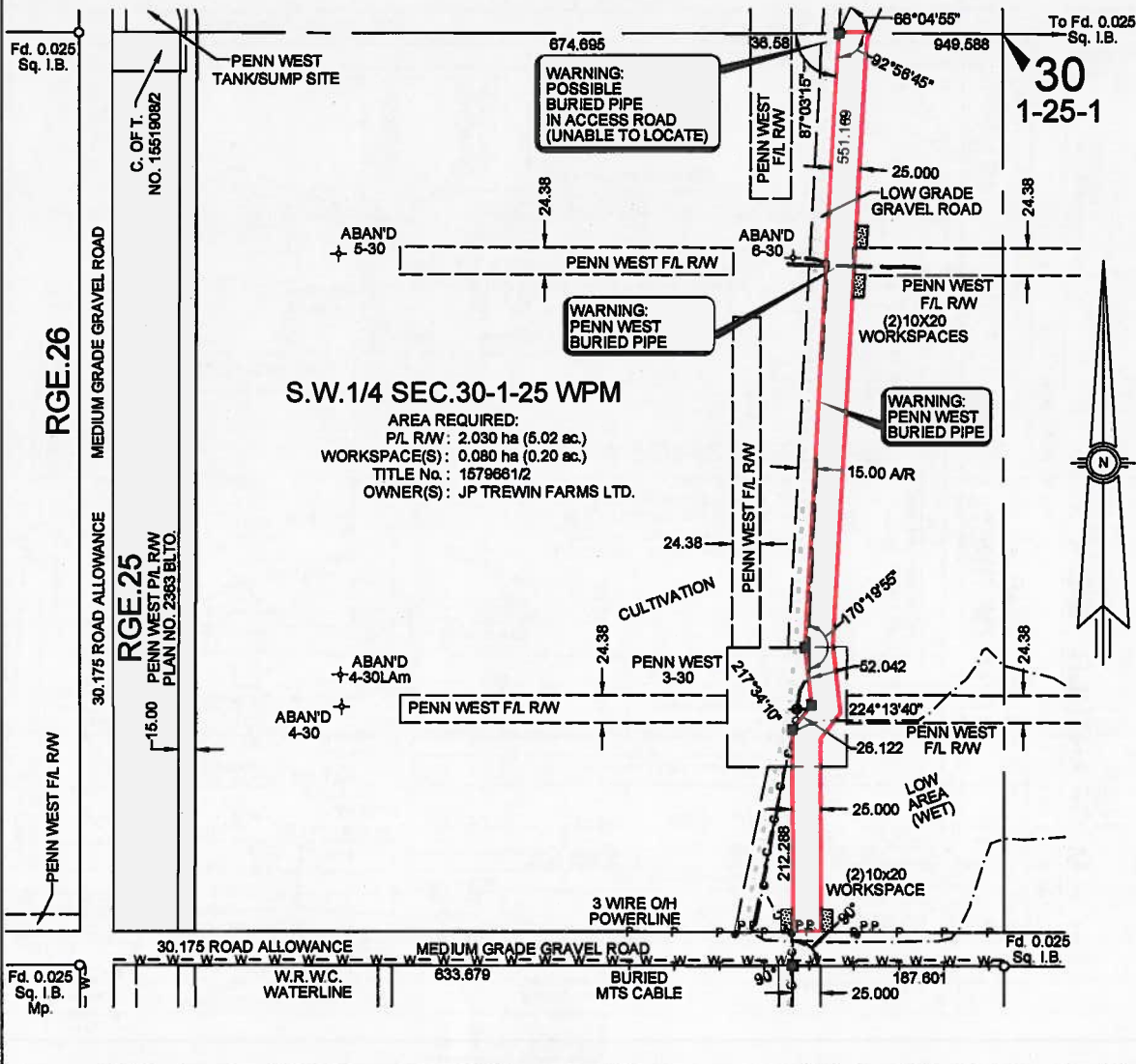
AREA REQ'D: 2.030 ha
5.02 ac.

J.H.M. McLeod
JADE H. MCLEOD
MANITOBA LAND SURVEYOR



CALTECH JOB NO.: 413-1074 413-1074/01.DWG PWP FILE NO.: 13-0061

REV.	DATE	DESCRIPTION	DWG	CKD
0	2013.03.19	ISSUED	RF	CR



S.W. 1/4 SEC. 30-1-25 WPM
 AREA REQUIRED:
 P/L RAW: 2.030 ha (5.02 ac.)
 WORKSPACE(S): 0.080 ha (0.20 ac.)
 TITLE No.: 1579661/2
 OWNER(S): JP TREWIN FARMS LTD.

To Fd. 0.025
Sq. I.B.
30
1-25-1

PENN WEST PETROLEUM LTD.

INDIVIDUAL OWNERSHIP PLAN

SHOWING

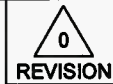
PIPELINE RIGHT OF WAY

IN

N.W. 1/4 SEC. 30 TWP. 1 RGE. 25 WPM

R.M. OF BRENDA

SCALE: 1:5000
PIPELINE #1



OWNER(S): JP TREWIN FARMS LTD.

LEGEND

- PORTIONS REFERRED TO SHOWN THUS
- WORKSPACE AREA SHOWN THUS
- SURVEY MONUMENTS FOUND SHOWN THUS
- SURVEY MONUMENTS PLANTED SHOWN THUS
- SURVEY MARKS (IRON SPIKES) PLANTED SHOWN THUS
- DISTANCES ARE SHOWN IN METRES
- DATE: 2013.03.19
- CERTIFIED CORRECT:

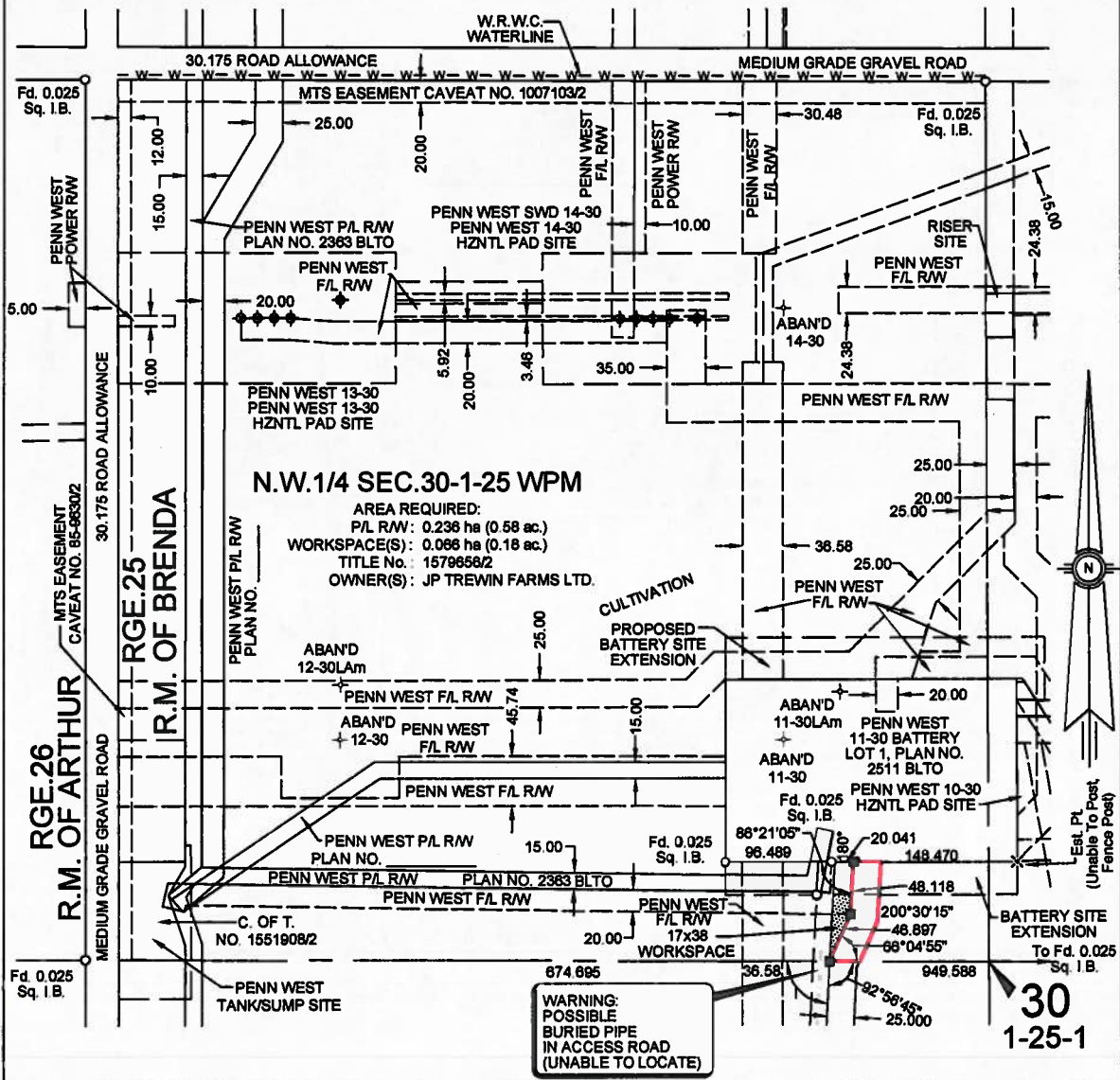
TITLE NO.: 1579656/2

AREA REQ'D: 0.236 ha
0.58 ac.

JADE H. MCLEOD
MANITOBA LAND SURVEYOR

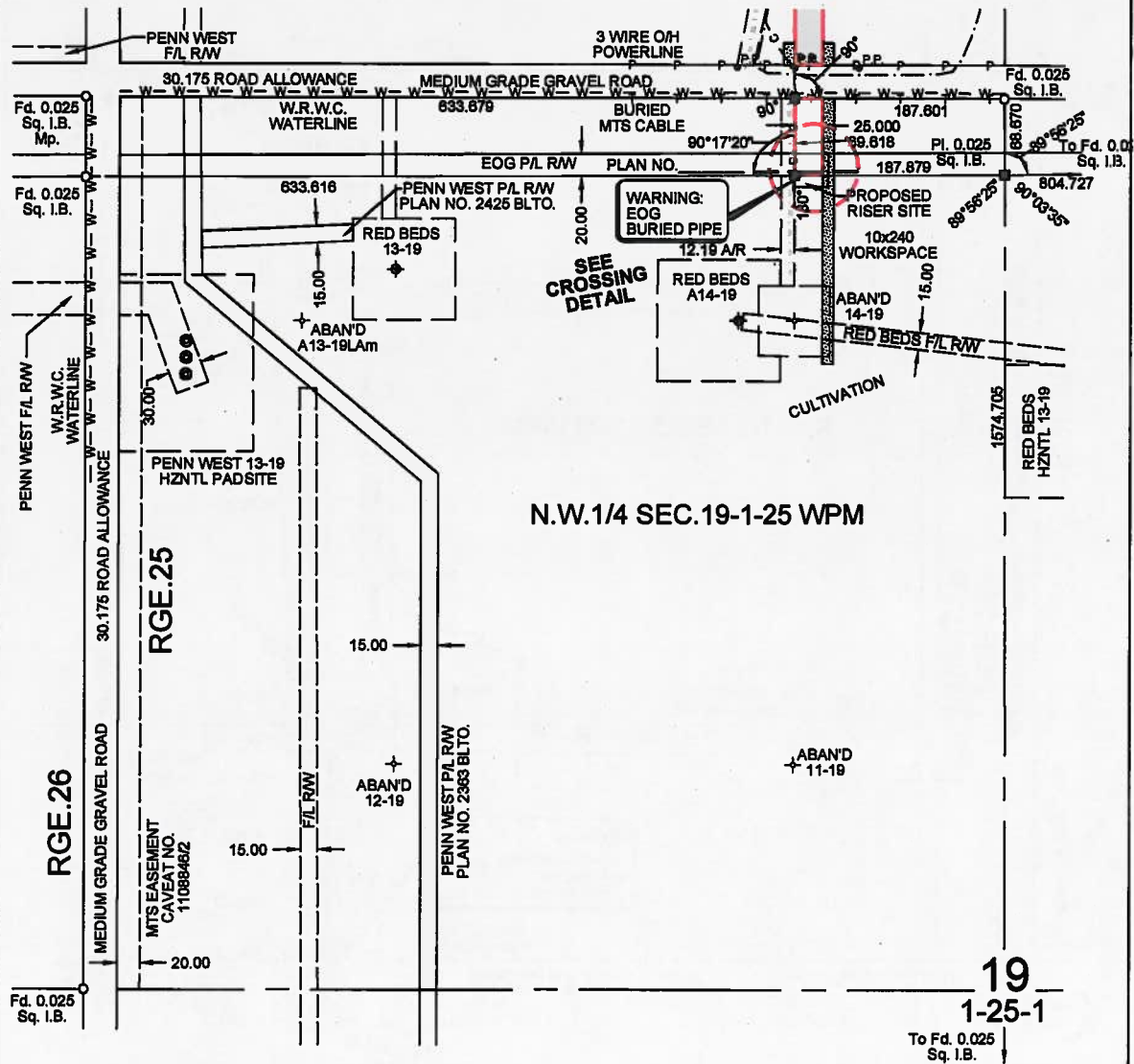


CALTECH JOB NO.: 413-1074 413-1074#01.DWG		PWP FILE NO.: 13-0081	
REV.	DATE	DESCRIPTION	DWG CK'D
0	2013.03.19	ISSUED	RF CR



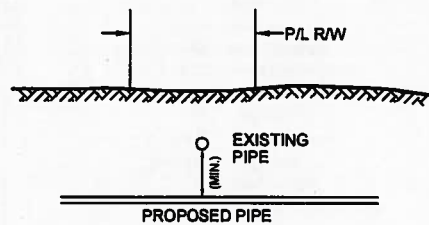
PENN WEST PETROLEUM LTD.

PLAN SHOWING PROPOSED PIPELINE RIGHT OF WAY CROSSING
 EOG P/L RW
 PLAN NO. _____
 WITHIN THE
 N.W. 1/4 SEC. 19 TWP. 1 RGE. 25 WPM
 R.M. OF BRENDA
 SCALE 1:5000
 PIPELINE #1



PIPE SPECIFICATIONS:

- Fluid: Gas
- MOP: 15307 kPa
- OD: 114.3 mm
- Wall: -
- Road X: -
- Material Type: Steel
- Material Standard: Z245.1
- Material Grade: 359
- Category: 2
- Internal Protect: None
- Joint Type: Welded
- Liner Type: -
- Method of Installation: -



CROSSING DETAIL

- Not to Scale -

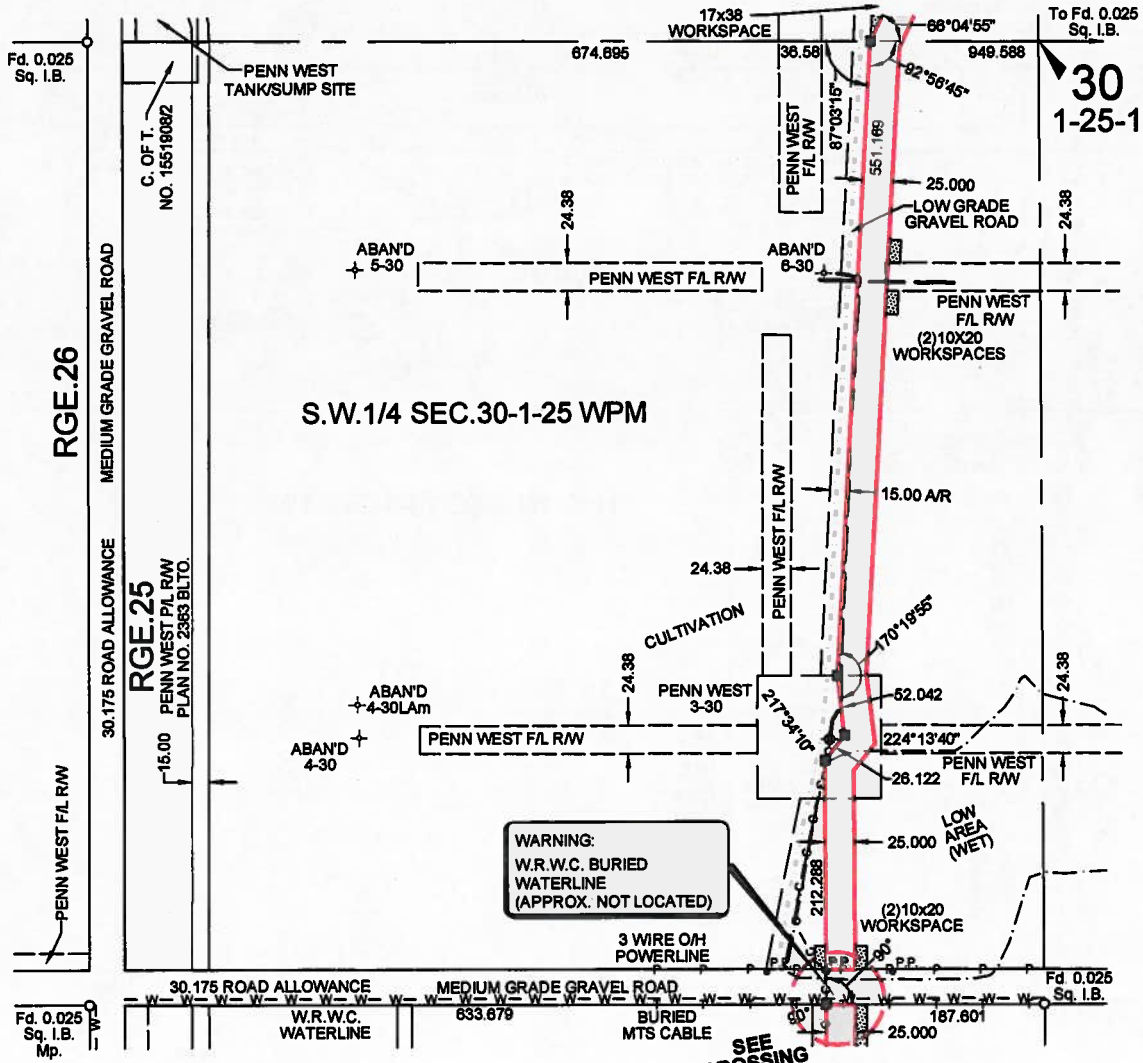
CALTECH
 SURVEYS (MB)
 Regina (306) Ph: 775-1814 Fax: 775-1818
 Virden (204) Ph: 748-1053 Fax: 748-1059

REV.	DATE	DESCRIPTION	DWG	CK'D
0	2013.03.19	ISSUED	RF	CR

CALTECH JOB NO.: 413-1074	
PWP FILE NO.: 13-0081	
413-1074x01.DWG	REVISION

PENN WEST PETROLEUM LTD.

PLAN SHOWING PROPOSED PIPELINE RIGHT OF WAY CROSSING
 WASKADA RURAL WATER CO-OP WATERLINE
 WITHIN THE
 S.W. 1/4 SEC. 30 TWP. 1 RGE. 25 WPM
 R.M. OF BRENDA
 SCALE 1:5000
 PIPELINE #1

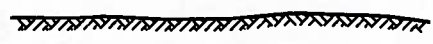


WARNING:
 W.R.W.C. BURIED
 WATERLINE
 (APPROX. NOT LOCATED)

SEE
 CROSSING
 DETAIL

PIPE SPECIFICATIONS:

- Fluid: Gas
- MOP: 15307 kPa
- OD: 114.3 mm
- Wall: -
- Road X: -
- Material Type: Steel
- Material Standard: Z245.1
- Material Grade: 359
- Category: 2
- Internal Protect: None
- Joint Type: Welded
- Liner Type: -
- Method of Installation: -



CROSSING DETAIL

- Not to Scale -

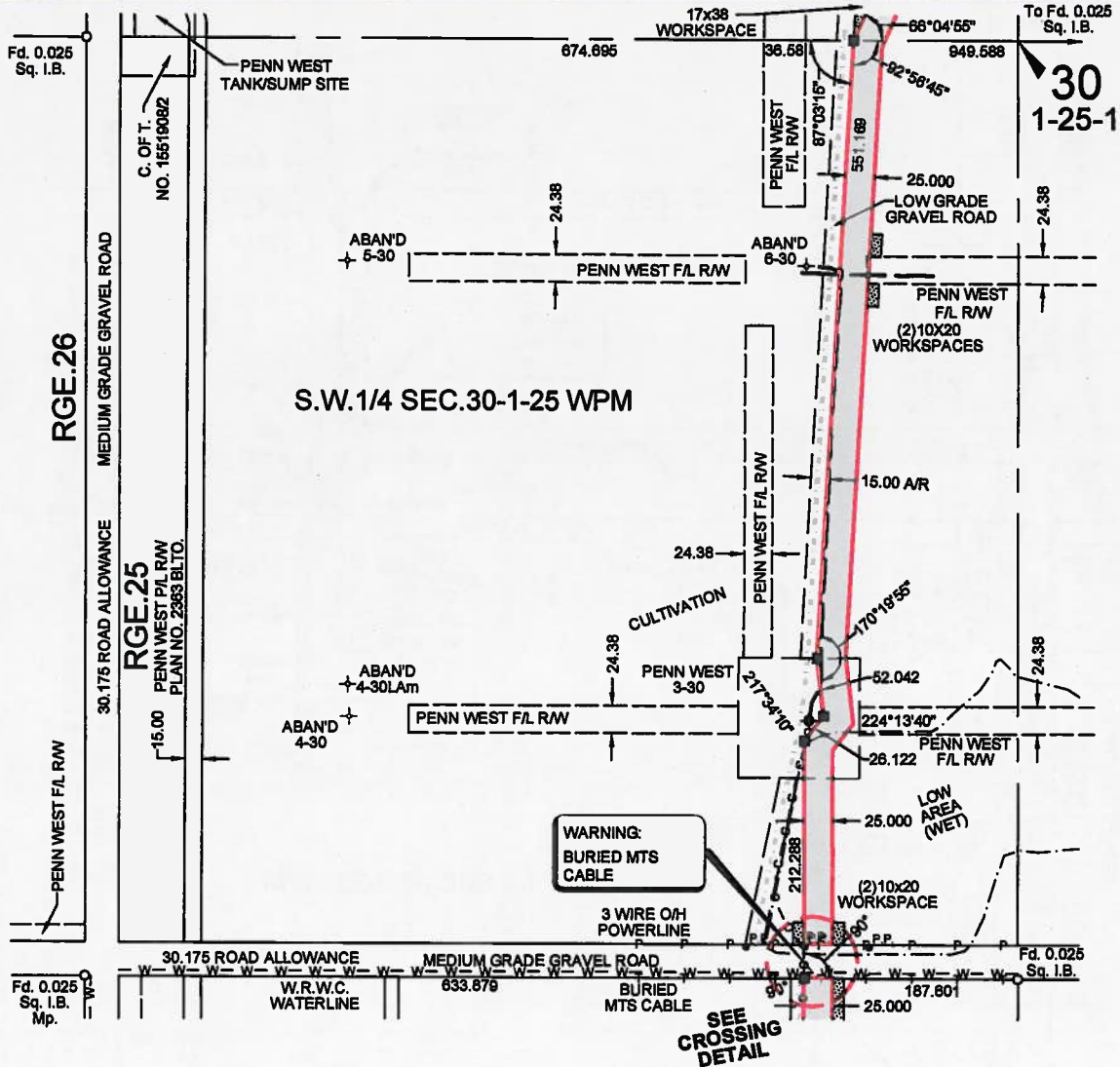
CALTECH
 SURVEYS (MB)
 Regina (306) Ph: 775-1814 Fax: 775-1818
 Virden (204) Ph: 748-1053 Fax: 748-1059

REV.	DATE	DESCRIPTION	DWG	CK'D
0	2013.03.19	ISSUED	RF	CR

CALTECH JOB NO.: 413-1074	REVISION
PWP FILE NO.: 13-0081	
413-1074x01.DWG	DWG No.: 413-1074-8X

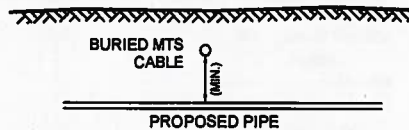
PENN WEST PETROLEUM LTD.

PLAN SHOWING PROPOSED PIPELINE RIGHT OF WAY CROSSING
 BURIED MTS CABLE
 WITHIN THE
 S.W. 1/4 SEC. 30 TWP. 1 RGE. 25 WPM
 R.M. OF BRENDA
 SCALE 1:5000
 PIPELINE #1



PIPE SPECIFICATIONS:

Fluid: Gas
 MOP: 15307 kPa
 OD: 114.3 mm
 Wall: -
 Road X: -
 Material Type: Steel
 Material Standard: Z245.1
 Material Grade: 359
 Category: 2
 Internal Protect: None
 Joint Type: Welded
 Liner Type: -
 Method of Installation: -



CROSSING DETAIL

- Not to Scale -



Regina (306) Ph: 775-1814 Fax: 775-1818
 Virden (204) Ph: 748-1053 Fax: 748-1059

REV.	DATE	DESCRIPTION	DWG	CKD
0	2013.03.19	ISSUED	RF	CR

CALTECH JOB NO.: 413-1074

PWP FILE NO.: 13-0061

413-1074x01.DWG

DWG No.: 413-1074-7X

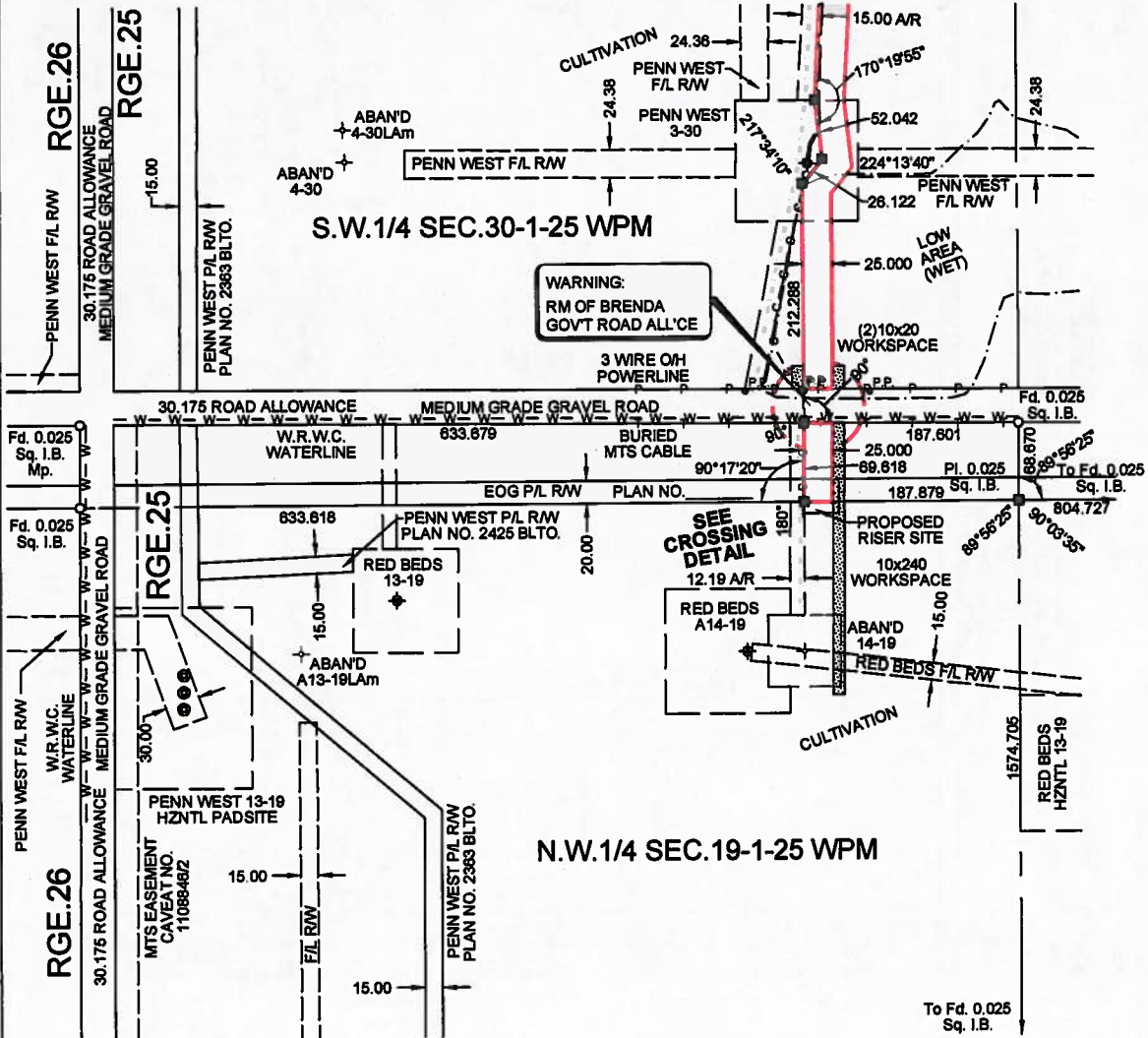


PENN WEST PETROLEUM LTD.

PLAN SHOWING PROPOSED PIPELINE RIGHT OF WAY CROSSING
DEVELOPED ROAD ALLOWANCE

BETWEEN
S.W. 1/4 SEC. 30 TWP. 1 RGE. 25 WPM &
N.W. 1/4 SEC. 19 TWP. 1 RGE. 25 WPM
R.M. OF BRENDA

SCALE 1:5000
PIPELINE #1



PIPE SPECIFICATIONS:

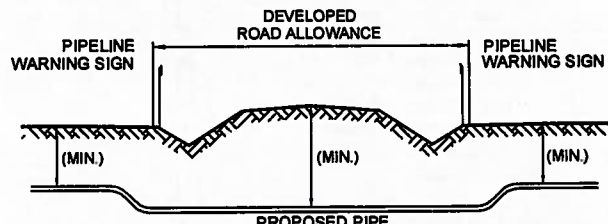
Fluid: Gas
MOP: 15307 kPa
OD: 114.3 mm
Wall: -
Road X: -
Material Type: Steel
Material Standard: 2245.1
Material Grade: 359
Category: 2
Internal Protect: None
Joint Type: Welded
Liner Type: -
Method of Installation: -



APPROVED:

R.M. OF BRENDA
SPECIAL CONDITIONS? YES ___ NO ___
PLEASE NOTE ANY SPECIAL CONDITIONS ON REVERSE.

ADMINISTRATOR



CROSSING DETAIL

- Not to Scale -



Regina (306) Ph: 775-1814 Fax: 775-1818
Virden (204) Ph: 748-1053 Fax: 748-1059

REV.	DATE	DESCRIPTION	DWG	CK'D
0	2013.03.19	ISSUED	RF	CR

413-1074x01.DWG

CALTECH JOB NO.: 413-1074

PWP FILE NO.: 13-0061

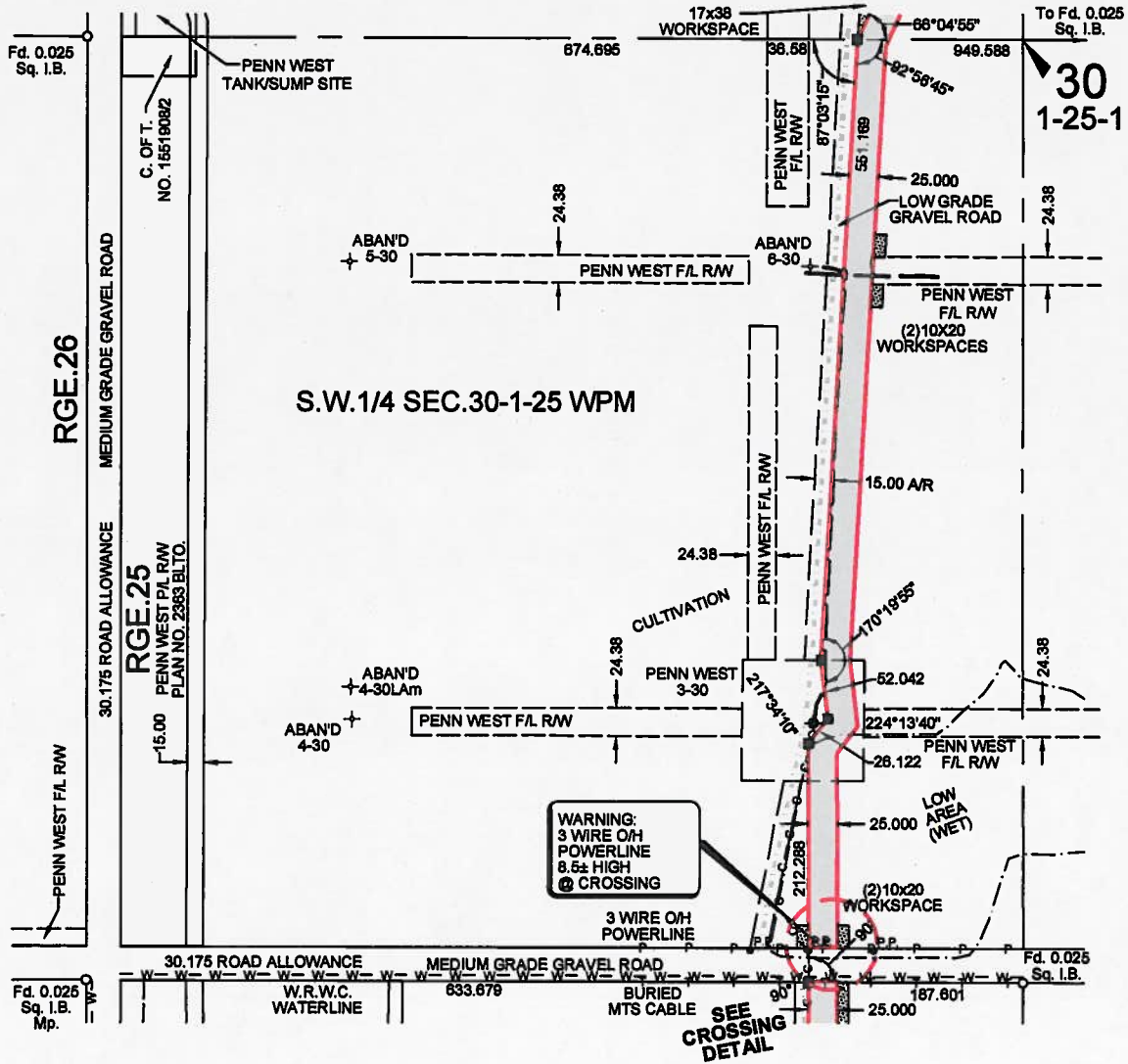
DWG No.: 413-1074-6X



REVISION

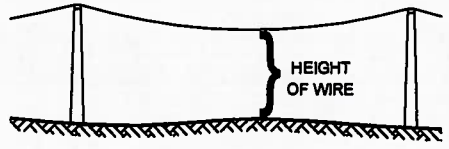
PENN WEST PETROLEUM LTD.

PLAN SHOWING PROPOSED PIPELINE RIGHT OF WAY CROSSING
 MB HYDRO 3-WIRE OVERHEAD POWERLINE
 ON THE S. BDY OF THE
 S.W. 1/4 SEC. 30 TWP. 1 RGE. 25 WPM
 R.M. OF BRENDA
 SCALE 1:5000
 PIPELINE #1



PIPE SPECIFICATIONS:

- Fluid: Gas
- MOP: 15307 kPa
- OD: 114.3 mm
- Wall: -
- Road X: -
- Material Type: Steel
- Material Standard: Z245.1
- Material Grade: 359
- Category: 2
- Internal Protect: None
- Joint Type: Welded
- Liner Type: -
- Method of Installation: -



CROSSING DETAIL

- Not to Scale -

CALTECH SURVEYS (MB)
 Regina (306) Ph: 775-1814 Fax: 775-1818
 Virden (204) Ph: 748-1053 Fax: 748-1059

REV.	DATE	DESCRIPTION	DWG	CKD
0	2013.03.19	ISSUED	RF	CR

CALTECH JOB NO.: 413-1074
PWP FILE NO.: 13-0061
DWG No.: 413-1074-5X

0
REVISION

413-1074x01.DWG

