

**DALY UNIT NO. 8**  
**WATERFLOOD EOR PROJECT**  
**ANNUAL REPORT FOR 2017**

**June 13, 2018**

**Tundra Oil and Gas**

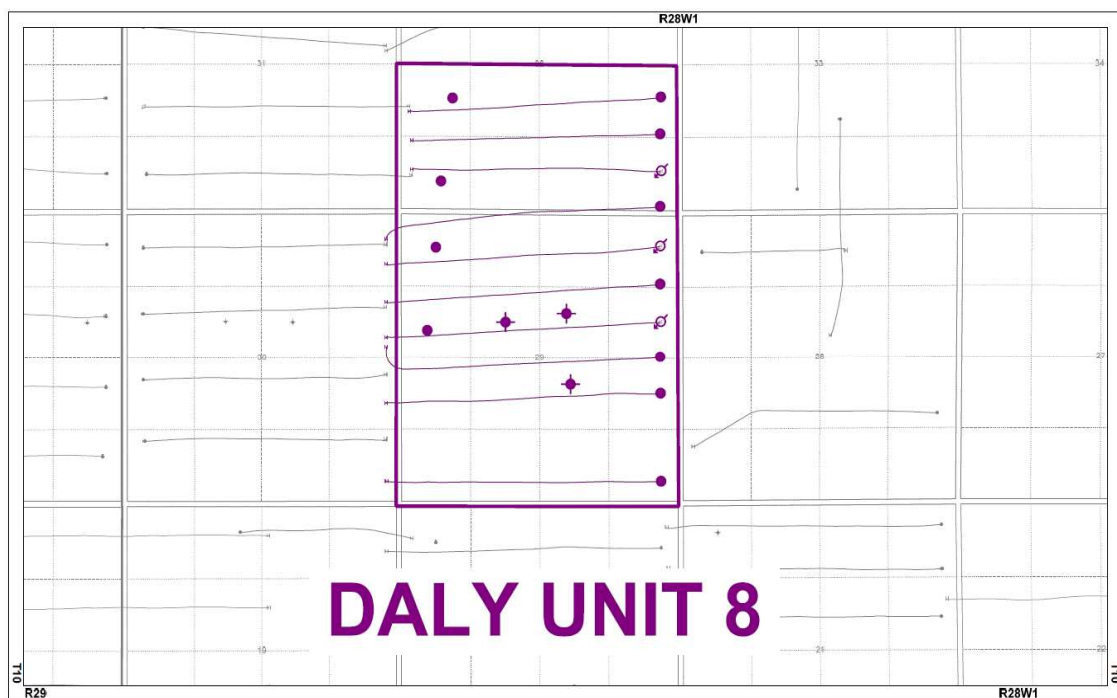
## Table of Contents

INTRODUCTION.....	3
DISCUSSION.....	3
Production History .....	3
Waterflood History.....	5
Waterflood EOR Operating Strategy and Performance .....	6
Water Source and Quality .....	6
Injection Wellhead Pressures .....	6
Reservoir Pressure .....	6
Well Servicing .....	6
Waterflood Performance Discussion .....	6
List of Appendices.....	7
Appendix A: Injection Pattern Summary	
Appendix B: Average Monthly Injection Wellhead Pressures	
Appendix C: Reservoir Pressure Summary	
Appendix D: Injector Pattern Production/Injection Rates, Cumulative and VRR Plots	

## **INTRODUCTION**

Daly Unit No. 8 Enhanced Oil Recovery (EOR) Waterflood Project was approved under Waterflood Order No. 37, effective October 1st, 2014 with Tundra Oil and Gas (Tundra) as Operator. The EOR project area, outlined in purple in Figure 1, contains 3 abandoned vertical wells, 4 vertical and 7 horizontal producing wells and 3 injection wells in 24 LSDs in Township 10, Range 28W1.

**Figure 1: Daly Unit No. 8 Area Outline**



In accordance with Section 73 of the Manitoba Drilling and Production Regulation, Tundra submits the following 2017 Annual Progress Report for Daly Unit No. 8 as required by Waterflood Order No. 37.

## **DISCUSSION**

### **Production History**

For the wells included in Daly Unit No. 8, production started in February 1986 with the 00/07-29 and 00/10-29-010-28W1/00 wells. Oil production peaked at 60.0 m<sup>3</sup>/d in October of 2011. In 2017, the average production for the unit was 11.13 m<sup>3</sup>/d of oil and 38.48 m<sup>3</sup>/d of water, and the average WOR was 3.49 m<sup>3</sup>/m<sup>3</sup>. Water injection commenced in Daly Unit No. 8 in February 2016. The rates and WOR are presented in Figure 2.

**Figure 2: Daly Unit No. 8 Production/Injection Rates and WOR vs. Time**

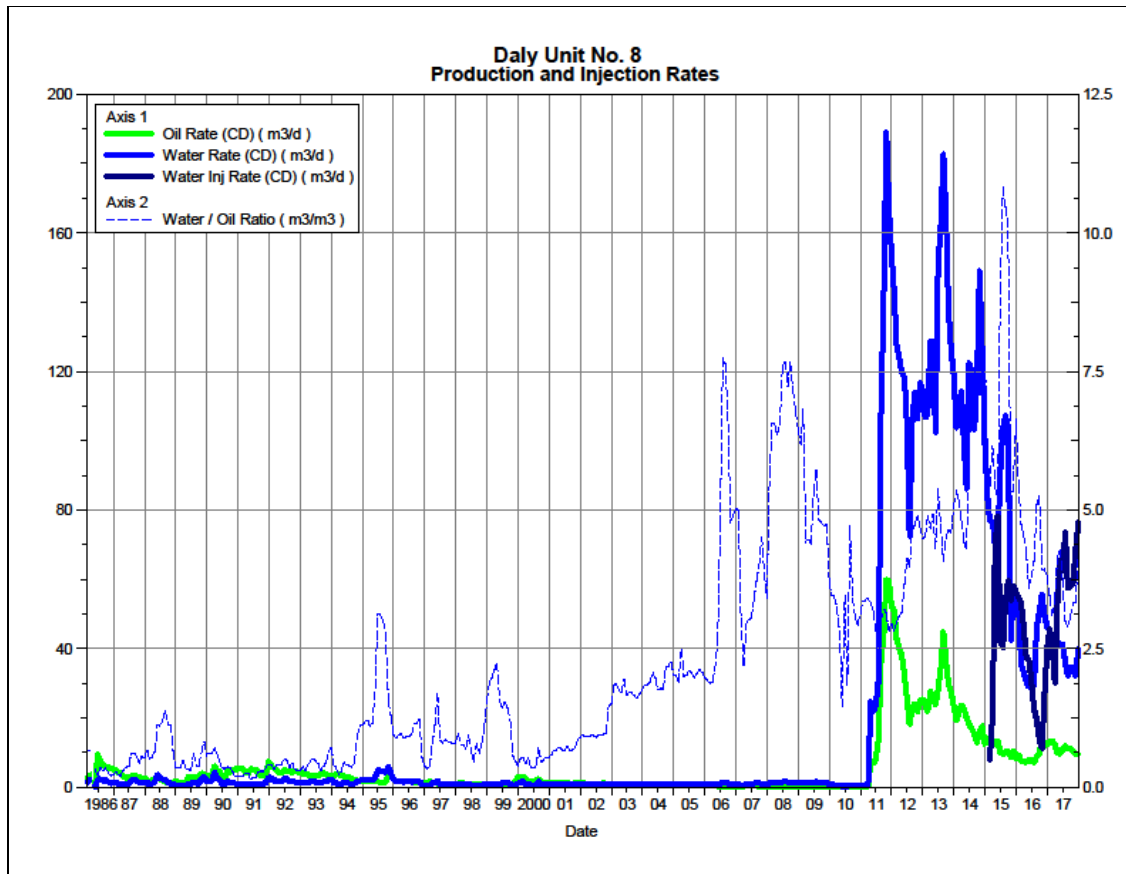
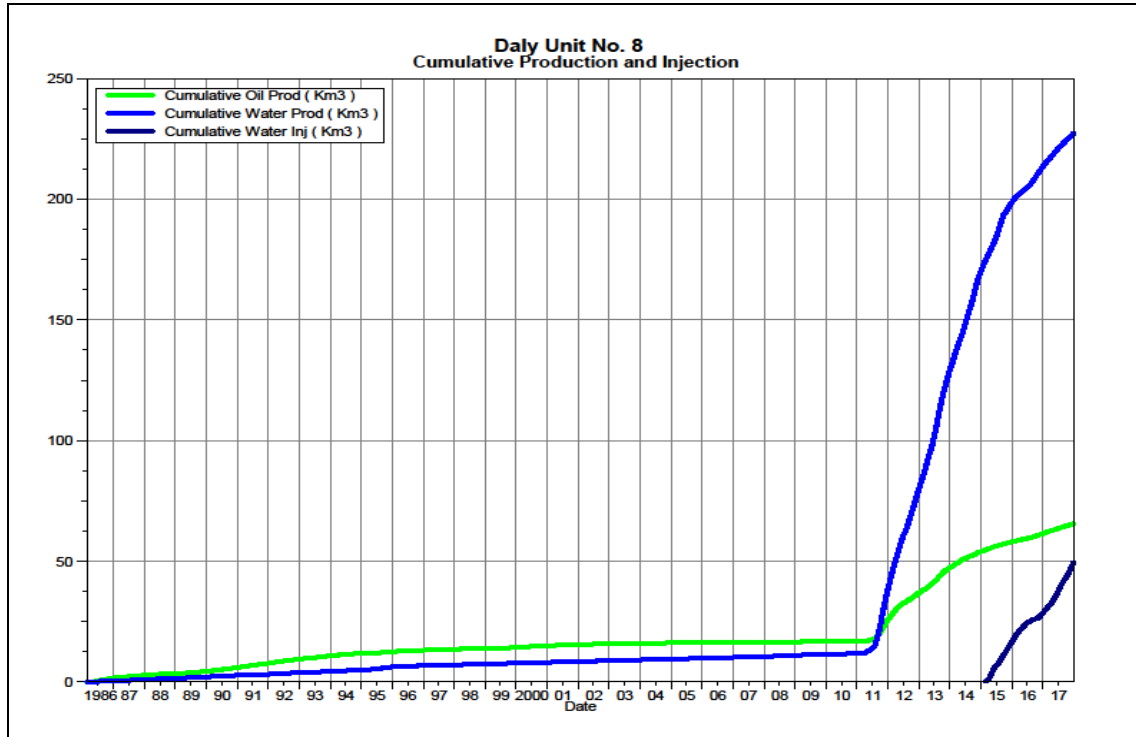


Figure 3 shows the cumulative production for Daly Unit No. 8 to the end of December 2017 as 65.5 e³m³ of oil and 227.5 e³m³ of water, representing an 9.4% recovery factor of the OOIP (696.7 e³m³). The cumulative water injected is 49.5 e³m³.

**Figure 3: Daly Unit No. 8 Cumulative Oil, Water and Water Injected vs. Time**



### **Waterflood History**

The five (5) horizontal injection wells proposed for Daly Unit No. 8 were drilled in 2011 and put on production that same year. The waterflood currently has four (4) 20 acre line drive waterflood patterns and a half 40 acre line drive waterflood pattern. In 2015, the 00/09-29, 00/16-29 and 00/01-32-010-28W1 producers were converted to injectors. Injection commenced in Daly Unit No. 8 in February 2015. In December 2017, Tundra converted the 02/08-29 producer to injection.

Tundra's future plans for this unit include converting the 00/08-32 producer and 02/01-29 producer into injectors and drilling a horizontal producer between the 02/01-29 and 02/08-29 injectors, creating a sixth (6th) 20 acre line drive waterflood pattern.

Production performance by injector pattern are summarized in Appendix A.

Any future revisions to the waterflood development or surveillance plan would be based on new production or performance response data, technical studies, or observed reservoir behavior and reserves recovery interpretations.

## **Waterflood EOR Operating Strategy and Performance**

### **Water Source and Quality**

Injection water for Daly Unit No. 8 will be supplied from the Jurassic source water well at 100/02-25-010-29W1 (00/02-25). Tundra received approval from the Petroleum Branch in March 2013 to use the 00/02-25 well as a source water well for waterflood operations. Jurassic-sourced water will be pumped from the 00/02-25 source well to the Daly 12-24-10-29 battery, where it will be filtered and then pumped up to injection system pressure.

### **Injection Wellhead Pressures**

The average monthly wellhead injection pressures are summarized in Appendix B. The average injection pressure for Daly Unit No. 8 was 2575 kPag in 2017.

### **Reservoir Pressure**

Where practical, Tundra is committed to collecting pressure data from newly drilled wells. For Daly Unit No. 8, pressure data taken in 2013 from 4 locations is available. A summary table is presented in Appendix C. Pressures are corrected to a common datum of -450 m SS for comparison with other units in the area.

### **Well Servicing**

Table 1 lists the maintenance that was required in Daly Unit No. 8 in 2017.

**Table 1: Service and Maintenance in Daly Unit No. 8**

100.09-29-010-28W1.00	Cemented Liner Cleanout	03/14/2017
100.16-29-010-28W1.00	Cemented Liner Cleanout	03/22/2017
102.08-29-010-28W1.00	Cemented Liner Cleanout / Injection Conversion	12/03/2017
100.01-32-010-28W1.00	Rigless Acid Stimulation	10/26/2017
102.08-32-010-28W1.00	Pump Change/Lower PSN	11/21/2017

### **Waterflood Performance Discussion**

Water injection began in Q1 2015, after the conversion of the 00/16-29 and 00/01-32 producers to injectors. At the end of 2017, Daly Unit No. 8 had 4 injection patterns in place. Since water injection only started in February 2015, there is no waterflood analysis that can be done at this time.

A summary table of the injection pattern(s) is presented in Appendix A. Plots of the production and injection data along with the VRR information are presented in Appendix D for each of the injection pattern(s).

## **List of Appendices**

Appendix A: Injection Pattern Summary

Appendix B: Average Monthly Injection Wellhead Pressures

Appendix C: Reservoir Pressure Summary

Appendix D: Injector Pattern Production/Injection Rates, Cumulative and VRR Plot and  
Table for the following injectors:

02/08-29-010-28W1/0

00/09-29-010-28W1/0

00/16-29-010-28W1/0

00/01-32-010-28W1/0

00/08-32-010-28W1/0

## Appendix A

### Daly Unit No. 8 Pattern Summary as of December 2017

Pattern Name	Injector Location (010-28W1)	Status	No. of Supported Wells	Supported Wells (010-28W1)	Allocation Factor	Pattern Prod Start Month	Inj Start Month	Oil Rate (m³/d)	Water Rate (m³/d)	WOR (m³/m³)	Water Injection (m³/d)	Cum Oil (E³m³)	Cum Water (E³m³)	Cum Inj Water (E³m³)	Monthly VRR	Cum VRR
02/08-29-010-28 Injector	02/08-30	Capable of Oil Production	3	00/07-29 02/01-29, 03/08-29	1 0.5	Jul 2011	Dec 2017	1.35	7.18	5.30	3.35	10.28	71.64	0.10	0.389	0.001
00/09-29-010-28 Injector	00/09-30	Capable of Oil Production	6	00/10-29, 00/11-29, 00/12-29, 00/13-29 03/08-29, 02/16-29	1 0.5	Jul 2011	Aug 2015	1.98	10.63	5.37	23.97	19.25	57.63	13.91	1.880	0.178
00/16-29-010-28 Injector	00/16-30	Capable of Oil Production	2	02/16-29, 02/01-32	0.5	Jul 2011	Feb 2015	2.09	7.00	3.35	24.55	11.13	36.38	17.17	2.656	0.356
00/01-32-010-28 Injector	00/04-32	Capable of Oil Production	3	00/04-32 02/01-32, 02/08-32	1 0.5	Apr 2011	Mar 2015	1.93	7.85	4.07	24.61	12.72	35.98	18.34	2.482	0.370
00/08-32-010-28 Injector	00/05-32	Capable of Oil Production	2	00/05-32 02/08-32	1 0.5	Mar 2011	-	2.08	7.23	3.47	-	10.18	19.85	0.00	0.000	0.000



## Appendix B

	Average Monthly Injection Pressure (kPag)			
Month	102/08-29	100/09-29	100/16-29	100/01-32
Jan-15				
Feb-15	0	0	7	0
Mar-15	0	0	-59	-65
Apr-15	0	0	517	-92
May-15	0	0	1736	119
Jun-15	0	0	1413	-73
Jul-15	0	0	1819	171
Aug-15	0	-78	2405	672
Sep-15	0	-89	2407	1044
Oct-15	0	127	2944	1660
Nov-15	0	1340	3687	2585
Dec-15	0	1881	3882	3087
Jan-16	0	2385	4310	3331
Feb-16	0	2677	3944	3794
Mar-16	0	3070	3889	3910
Apr-16	0	3440	3948	3934
May-16	0	3701	3928	3985
Jun-16	0	3935	3794	3947
Jul-16	0	3779	3933	4086
Aug-16	0	3836	3895	4117
Sep-16	0	3911	3663	3163
Oct-16	0	3917	3941	1138
Nov-16	0	3487	3954	258
Dec-16	0	3964	3726	2231
Jan-17	0	3657	3754	3233
Feb-17	0	1978	3333	4070
Mar-17	0	-86	2157	4045
Apr-17	0	-84	-88	3947
May-17	0	153	103	4033
Jun-17	0	979	834	4001
Jul-17	0	1685	1170	4144
Aug-17	0	2114	1922	4113
Sep-17	0	2546	2158	4081
Oct-17	0	2923	2559	3913
Nov-17	0	2973	2946	2982
Dec-17	-77	3538	3263	3640

## APPENDIX C

### Daly Unit No. 8 - Pressure Summary

Location	Test Date	Final Pressure (kPaa)	MPP (mTVD)	KB	Datum Depth	Gradient	Pressure @ -450 masl
103/08-29-010-28W1/00	Feb 2nd - 22nd, 2013	5526.5	819.6	519.9	-450	8.25	6767
102/16-29-010-28W1/00	Jan 28th - Feb 11th, 2013	4229.8	818.2	519.3	-450	8.25	5476
102/01-32-010-28W1/00	Feb 9th - 23rd, 2013	5702.6	825.9	520.1	-450	8.25	6892
102/08-32-010-28W1/00	Jan 18th - 29th, 2013	3905.8	825.1	520.7	-450	8.25	5107

## **Appendix D**

### **Rates and VRR Plots**

# Pattern: 02/08-29-010-28Inj Set: DalyUnit#8BKKK

Oil Formation Vol Factor : 1.07100 m3/m3

Water Formation Vol Factor : 1.00150 m3/m3

Water / Oil Ratio : 9.83 m3/m3

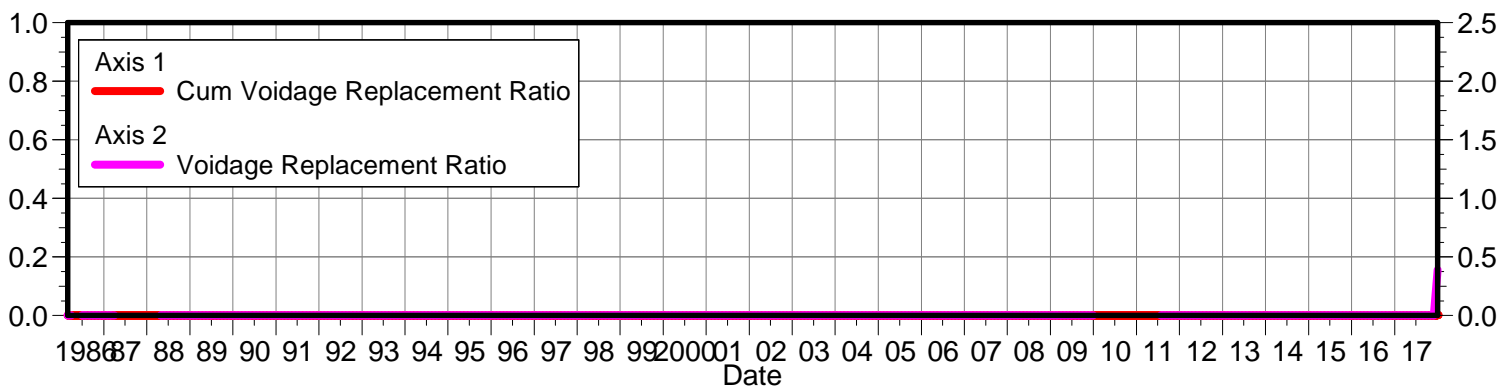
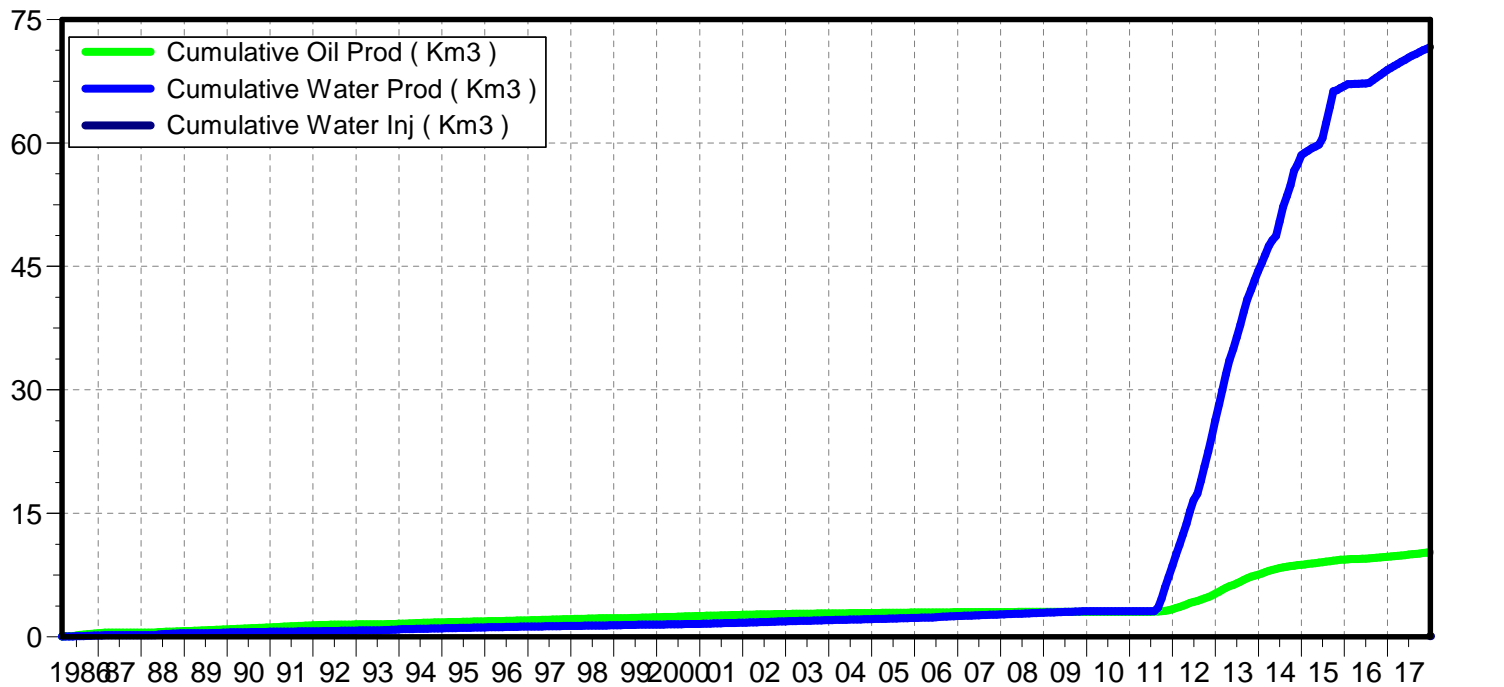
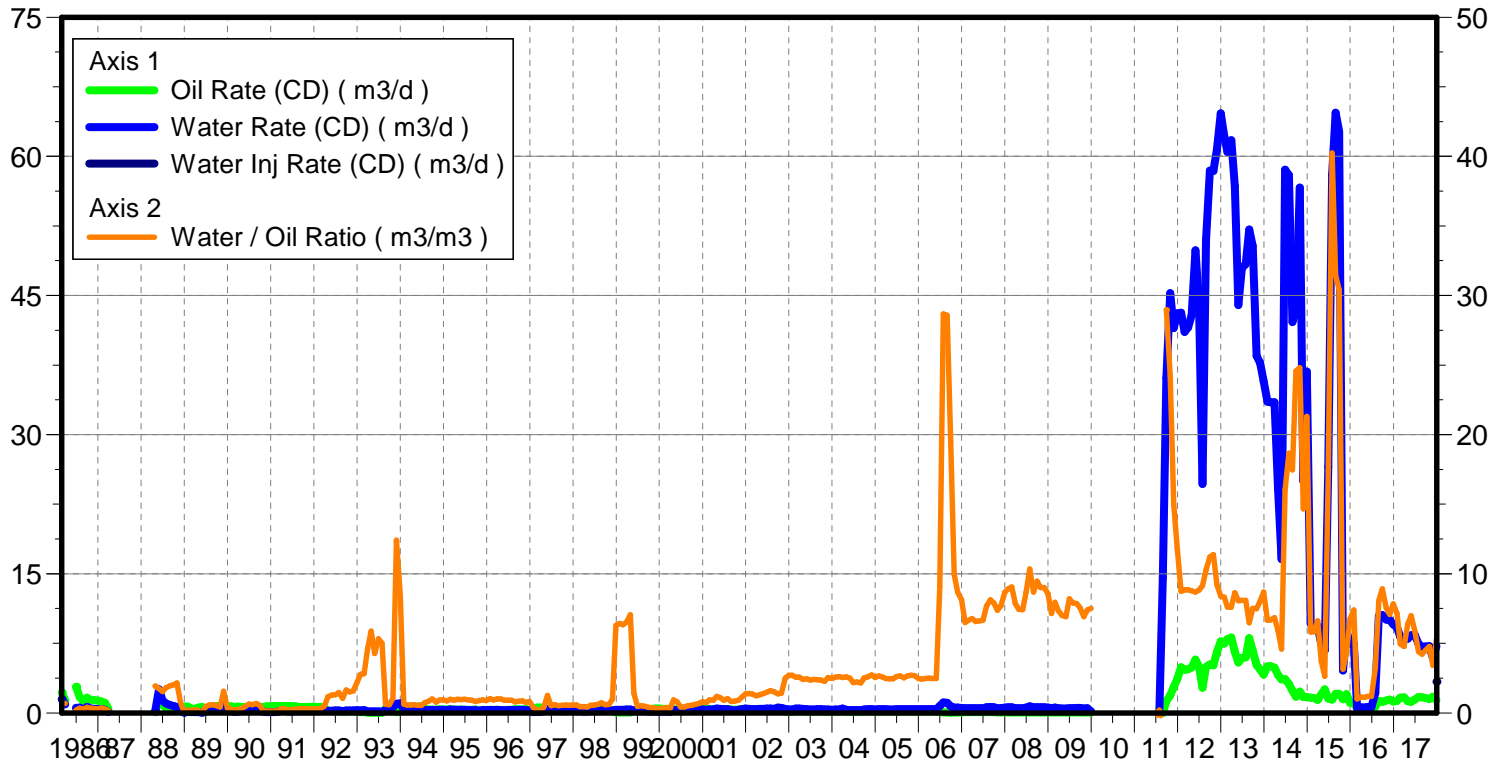
June 06, 2018

Operator: TUNDRA\_OIL\_AND\_GAS\_PARTNER

Oil Rate (CD) : 1.71 m3/d

Water Rate (CD) : 6.64 m3/d

Water Inj Rate (CD) : 24.64 m3/d



Date	Oil Rate (CD) m3/d	Water Rate (CD) m3/d	Water Oil Ratio m3/m3	Water Inj Rate (CD) m3/d	Cum Oil Prod Km3	Cum Water Prod Km3	Cum Water Inj Km3	VRR	Cum VRR
1/31/1986					0.00	0.00	0.00		
2/28/1986	2.21	1.47	0.67		0.06	0.04	0.00	0.000	0.000
3/31/1986	1.36	0.92	0.67		0.10	0.07	0.00	0.000	0.000
4/30/1986					0.10	0.07	0.00		0.000
5/31/1986					0.10	0.07	0.00		0.000
6/30/1986	2.82	0.54	0.19		0.19	0.09	0.00	0.000	0.000
7/31/1986	1.72	0.58	0.34		0.24	0.10	0.00	0.000	0.000
8/31/1986	1.27	0.34	0.27		0.28	0.11	0.00	0.000	0.000
9/30/1986	1.64	0.65	0.39		0.33	0.13	0.00	0.000	0.000
10/31/1986	1.40	0.47	0.34		0.37	0.15	0.00	0.000	0.000
11/30/1986	1.37	0.42	0.31		0.41	0.16	0.00	0.000	0.000
12/31/1986	1.35	0.39	0.29		0.46	0.17	0.00	0.000	0.000
1/31/1987	1.22	0.44	0.36		0.49	0.19	0.00	0.000	0.000
2/28/1987	1.10	0.33	0.30		0.53	0.20	0.00	0.000	0.000
3/31/1987	0.42	0.07	0.18		0.54	0.20	0.00	0.000	0.000
4/30/1987					0.54	0.20	0.00		0.000
5/31/1987					0.54	0.20	0.00		0.000
6/30/1987					0.54	0.20	0.00		0.000
7/31/1987					0.54	0.20	0.00		0.000
8/31/1987					0.54	0.20	0.00		0.000
9/30/1987					0.54	0.20	0.00		0.000
10/31/1987					0.54	0.20	0.00		0.000
11/30/1987					0.54	0.20	0.00		0.000
12/31/1987					0.54	0.20	0.00		0.000
1/31/1988					0.54	0.20	0.00		0.000
2/29/1988					0.54	0.20	0.00		0.000
3/31/1988					0.54	0.20	0.00		0.000
4/30/1988	0.08	0.15	1.92		0.54	0.20	0.00	0.000	0.000
5/31/1988	1.45	2.54	1.75		0.59	0.28	0.00	0.000	0.000
6/30/1988	0.86	1.32	1.53		0.61	0.32	0.00	0.000	0.000
7/31/1988	0.55	1.00	1.82		0.63	0.35	0.00	0.000	0.000
8/31/1988	0.44	0.86	1.96		0.64	0.38	0.00	0.000	0.000
9/30/1988	0.37	0.75	2.02		0.65	0.40	0.00	0.000	0.000
10/31/1988	0.30	0.65	2.15		0.66	0.42	0.00	0.000	0.000
11/30/1988	0.51	0.39	0.77		0.68	0.43	0.00	0.000	0.000
12/31/1988	0.69	0.02	0.03		0.70	0.43	0.00	0.000	0.000
1/31/1989	0.66	0.14	0.20		0.72	0.44	0.00	0.000	0.000
2/28/1989	0.47	0.08	0.17		0.73	0.44	0.00	0.000	0.000
3/31/1989	0.43	0.09	0.22		0.75	0.44	0.00	0.000	0.000
4/30/1989	0.58	0.10	0.18		0.76	0.45	0.00	0.000	0.000
5/31/1989	0.65	0.03	0.04		0.78	0.45	0.00	0.000	0.000
6/30/1989	0.35	0.16	0.46		0.79	0.45	0.00	0.000	0.000
7/31/1989	0.65	0.37	0.57		0.81	0.46	0.00	0.000	0.000
8/31/1989	0.64	0.37	0.58		0.83	0.47	0.00	0.000	0.000
9/30/1989	0.70	0.36	0.51		0.86	0.49	0.00	0.000	0.000
10/31/1989	0.79	0.35	0.44		0.88	0.50	0.00	0.000	0.000

Date	Oil Rate (CD) m3/d	Water Rate (CD) m3/d	Water Oil Ratio m3/m3	Water Inj Rate (CD) m3/d	Cum Oil Prod Km3	Cum Water Prod Km3	Cum Water Inj Km3	VRR	Cum VRR
11/30/1989	0.73	1.13	1.55		0.90	0.53	0.00	0.000	0.000
12/31/1989	0.64	0.21	0.32		0.92	0.54	0.00	0.000	0.000
1/31/1990	0.71	0.19	0.26		0.94	0.54	0.00	0.000	0.000
2/28/1990	0.63	0.13	0.21		0.96	0.55	0.00	0.000	0.000
3/31/1990	0.66	0.16	0.25		0.98	0.55	0.00	0.000	0.000
4/30/1990	0.64	0.21	0.32		1.00	0.56	0.00	0.000	0.000
5/31/1990	0.65	0.31	0.47		1.02	0.57	0.00	0.000	0.000
6/30/1990	0.57	0.37	0.64		1.04	0.58	0.00	0.000	0.000
7/31/1990	0.55	0.33	0.59		1.06	0.59	0.00	0.000	0.000
8/31/1990	0.58	0.39	0.68		1.07	0.60	0.00	0.000	0.000
9/30/1990	0.66	0.36	0.54		1.09	0.61	0.00	0.000	0.000
10/31/1990	0.65	0.11	0.16		1.11	0.61	0.00	0.000	0.000
11/30/1990	0.72	0.10	0.13		1.14	0.62	0.00	0.000	0.000
12/31/1990	0.72	0.09	0.13		1.16	0.62	0.00	0.000	0.000
1/31/1991	0.74	0.09	0.13		1.18	0.62	0.00	0.000	0.000
2/28/1991	0.76	0.12	0.16		1.20	0.63	0.00	0.000	0.000
3/31/1991	0.76	0.23	0.30		1.23	0.63	0.00	0.000	0.000
4/30/1991	0.72	0.21	0.30		1.25	0.64	0.00	0.000	0.000
5/31/1991	0.76	0.16	0.21		1.27	0.64	0.00	0.000	0.000
6/30/1991	0.70	0.17	0.24		1.29	0.65	0.00	0.000	0.000
7/31/1991	0.70	0.18	0.26		1.31	0.66	0.00	0.000	0.000
8/31/1991	0.64	0.19	0.30		1.33	0.66	0.00	0.000	0.000
9/30/1991	0.64	0.19	0.30		1.35	0.67	0.00	0.000	0.000
10/31/1991	0.64	0.18	0.29		1.37	0.67	0.00	0.000	0.000
11/30/1991	0.64	0.19	0.29		1.39	0.68	0.00	0.000	0.000
12/31/1991	0.67	0.19	0.28		1.41	0.68	0.00	0.000	0.000
1/31/1992	0.65	0.18	0.28		1.43	0.69	0.00	0.000	0.000
2/29/1992	0.62	0.21	0.33		1.45	0.70	0.00	0.000	0.000
3/31/1992	0.49	0.24	0.49		1.47	0.70	0.00	0.000	0.000
4/30/1992	0.21	0.24	1.16		1.47	0.71	0.00	0.000	0.000
5/31/1992	0.18	0.23	1.27		1.48	0.72	0.00	0.000	0.000
6/30/1992	0.20	0.26	1.30		1.48	0.73	0.00	0.000	0.000
7/31/1992	0.18	0.26	1.47		1.49	0.73	0.00	0.000	0.000
8/31/1992	0.17	0.18	1.04		1.49	0.74	0.00	0.000	0.000
9/30/1992	0.16	0.27	1.65		1.50	0.75	0.00	0.000	0.000
10/31/1992	0.18	0.27	1.51		1.51	0.76	0.00	0.000	0.000
11/30/1992	0.18	0.28	1.57		1.51	0.76	0.00	0.000	0.000
12/31/1992	0.13	0.28	2.20		1.51	0.77	0.00	0.000	0.000
1/31/1993	0.10	0.28	2.77		1.52	0.78	0.00	0.000	0.000
2/28/1993	0.10	0.28	2.82		1.52	0.79	0.00	0.000	0.000
3/31/1993	0.04	0.16	4.64		1.52	0.79	0.00	0.000	0.000
4/30/1993	0.03	0.16	5.88		1.52	0.80	0.00	0.000	0.000
5/31/1993	0.04	0.15	4.27		1.52	0.80	0.00	0.000	0.000
6/30/1993	0.03	0.16	5.33		1.52	0.81	0.00	0.000	0.000
7/31/1993	0.02	0.11	5.00		1.53	0.81	0.00	0.000	0.000
8/31/1993	0.46	0.28	0.62		1.54	0.82	0.00	0.000	0.000

Date	Oil Rate (CD) m3/d	Water Rate (CD) m3/d	Water Oil Ratio m3/m3	Water Inj Rate (CD) m3/d	Cum Oil Prod Km3	Cum Water Prod Km3	Cum Water Inj Km3	VRR	Cum VRR
9/30/1993	0.90	0.53	0.58		1.57	0.84	0.00	0.000	0.000
10/31/1993	0.63	0.65	1.04		1.59	0.86	0.00	0.000	0.000
11/30/1993	0.08	0.99	12.42		1.59	0.89	0.00	0.000	0.000
12/31/1993	0.12	1.03	8.42		1.59	0.92	0.00	0.000	0.000
1/31/1994	0.60	0.38	0.64		1.61	0.93	0.00	0.000	0.000
2/28/1994	0.57	0.32	0.56		1.63	0.94	0.00	0.000	0.000
3/31/1994	0.55	0.32	0.57		1.64	0.95	0.00	0.000	0.000
4/30/1994	0.57	0.34	0.60		1.66	0.96	0.00	0.000	0.000
5/31/1994	0.67	0.36	0.53		1.68	0.97	0.00	0.000	0.000
6/30/1994	0.72	0.39	0.55		1.70	0.98	0.00	0.000	0.000
7/31/1994	0.39	0.30	0.76		1.72	0.99	0.00	0.000	0.000
8/31/1994	0.36	0.30	0.85		1.73	1.00	0.00	0.000	0.000
9/30/1994	0.33	0.33	1.00		1.74	1.01	0.00	0.000	0.000
10/31/1994	0.37	0.29	0.77		1.75	1.02	0.00	0.000	0.000
11/30/1994	0.35	0.33	0.92		1.76	1.03	0.00	0.000	0.000
12/31/1994	0.36	0.34	0.94		1.77	1.04	0.00	0.000	0.000
1/31/1995	0.35	0.31	0.87		1.78	1.05	0.00	0.000	0.000
2/28/1995	0.36	0.35	0.98		1.79	1.06	0.00	0.000	0.000
3/31/1995	0.37	0.34	0.91		1.80	1.07	0.00	0.000	0.000
4/30/1995	0.35	0.34	0.99		1.81	1.08	0.00	0.000	0.000
5/31/1995	0.35	0.34	0.96		1.82	1.09	0.00	0.000	0.000
6/30/1995	0.33	0.32	0.97		1.83	1.10	0.00	0.000	0.000
7/31/1995	0.33	0.31	0.94		1.84	1.11	0.00	0.000	0.000
8/31/1995	0.34	0.30	0.90		1.85	1.12	0.00	0.000	0.000
9/30/1995	0.36	0.29	0.81		1.87	1.13	0.00	0.000	0.000
10/31/1995	0.27	0.24	0.88		1.87	1.14	0.00	0.000	0.000
11/30/1995	0.32	0.30	0.93		1.88	1.15	0.00	0.000	0.000
12/31/1995	0.33	0.29	0.89		1.89	1.15	0.00	0.000	0.000
1/31/1996	0.31	0.32	1.02		1.90	1.16	0.00	0.000	0.000
2/29/1996	0.33	0.31	0.94		1.91	1.17	0.00	0.000	0.000
3/31/1996	0.32	0.32	1.01		1.92	1.18	0.00	0.000	0.000
4/30/1996	0.30	0.30	1.00		1.93	1.19	0.00	0.000	0.000
5/31/1996	0.30	0.27	0.91		1.94	1.20	0.00	0.000	0.000
6/30/1996	0.32	0.29	0.92		1.95	1.21	0.00	0.000	0.000
7/31/1996	0.33	0.30	0.91		1.96	1.22	0.00	0.000	0.000
8/31/1996	0.38	0.31	0.80		1.97	1.23	0.00	0.000	0.000
9/30/1996	0.37	0.31	0.84		1.98	1.24	0.00	0.000	0.000
10/31/1996	0.37	0.32	0.86		2.00	1.25	0.00	0.000	0.000
11/30/1996	0.38	0.29	0.76		2.01	1.26	0.00	0.000	0.000
12/31/1996	0.31	0.26	0.82		2.02	1.26	0.00	0.000	0.000
1/31/1997	0.22	0.09	0.39		2.02	1.27	0.00	0.000	0.000
2/28/1997	0.56	0.12	0.21		2.04	1.27	0.00	0.000	0.000
3/31/1997	0.57	0.11	0.19		2.06	1.27	0.00	0.000	0.000
4/30/1997	0.49	0.21	0.42		2.07	1.28	0.00	0.000	0.000
5/31/1997	0.33	0.41	1.26		2.08	1.29	0.00	0.000	0.000
6/30/1997	0.40	0.21	0.52		2.09	1.30	0.00	0.000	0.000

Date	Oil Rate (CD) m3/d	Water Rate (CD) m3/d	Water Oil Ratio m3/m3	Water Inj Rate (CD) m3/d	Cum Oil Prod Km3	Cum Water Prod Km3	Cum Water Inj Km3	VRR	Cum VRR
7/31/1997	0.38	0.22	0.58		2.11	1.31	0.00	0.000	0.000
8/31/1997	0.38	0.20	0.51		2.12	1.31	0.00	0.000	0.000
9/30/1997	0.39	0.21	0.53		2.13	1.32	0.00	0.000	0.000
10/31/1997	0.37	0.21	0.56		2.14	1.32	0.00	0.000	0.000
11/30/1997	0.38	0.21	0.55		2.15	1.33	0.00	0.000	0.000
12/31/1997	0.38	0.21	0.56		2.16	1.34	0.00	0.000	0.000
1/31/1998	0.36	0.21	0.58		2.17	1.34	0.00	0.000	0.000
2/28/1998	0.45	0.20	0.46		2.19	1.35	0.00	0.000	0.000
3/31/1998	0.39	0.17	0.45		2.20	1.35	0.00	0.000	0.000
4/30/1998	0.37	0.16	0.42		2.21	1.36	0.00	0.000	0.000
5/31/1998	0.35	0.19	0.55		2.22	1.36	0.00	0.000	0.000
6/30/1998	0.35	0.20	0.56		2.23	1.37	0.00	0.000	0.000
7/31/1998	0.33	0.20	0.60		2.24	1.38	0.00	0.000	0.000
8/31/1998	0.35	0.25	0.73		2.25	1.38	0.00	0.000	0.000
9/30/1998	0.33	0.19	0.58		2.26	1.39	0.00	0.000	0.000
10/31/1998	0.33	0.20	0.61		2.27	1.40	0.00	0.000	0.000
11/30/1998	0.26	0.26	0.97		2.28	1.40	0.00	0.000	0.000
12/31/1998	0.05	0.35	6.29		2.28	1.42	0.00	0.000	0.000
1/31/1999	0.05	0.33	6.44		2.28	1.43	0.00	0.000	0.000
2/28/1999	0.05	0.34	6.33		2.29	1.44	0.00	0.000	0.000
3/31/1999	0.05	0.36	6.53		2.29	1.45	0.00	0.000	0.000
4/30/1999	0.05	0.38	7.06		2.29	1.46	0.00	0.000	0.000
5/31/1999	0.20	0.28	1.41		2.29	1.47	0.00	0.000	0.000
6/30/1999	0.38	0.18	0.47		2.31	1.47	0.00	0.000	0.000
7/31/1999	0.39	0.20	0.51		2.32	1.48	0.00	0.000	0.000
8/31/1999	0.40	0.19	0.48		2.33	1.48	0.00	0.000	0.000
9/30/1999	0.39	0.16	0.41		2.34	1.49	0.00	0.000	0.000
10/31/1999	0.44	0.15	0.35		2.36	1.49	0.00	0.000	0.000
11/30/1999	0.47	0.16	0.34		2.37	1.50	0.00	0.000	0.000
12/31/1999	0.46	0.13	0.28		2.38	1.50	0.00	0.000	0.000
1/31/2000	0.42	0.15	0.34		2.40	1.51	0.00	0.000	0.000
2/29/2000	0.42	0.15	0.36		2.41	1.51	0.00	0.000	0.000
3/31/2000	0.45	0.14	0.30		2.42	1.51	0.00	0.000	0.000
4/30/2000	0.36	0.34	0.94		2.43	1.52	0.00	0.000	0.000
5/31/2000	0.38	0.30	0.79		2.45	1.53	0.00	0.000	0.000
6/30/2000	0.48	0.20	0.42		2.46	1.54	0.00	0.000	0.000
7/31/2000	0.46	0.20	0.43		2.47	1.55	0.00	0.000	0.000
8/31/2000	0.43	0.22	0.52		2.49	1.55	0.00	0.000	0.000
9/30/2000	0.47	0.26	0.55		2.50	1.56	0.00	0.000	0.000
10/31/2000	0.36	0.22	0.60		2.51	1.57	0.00	0.000	0.000
11/30/2000	0.41	0.28	0.69		2.53	1.58	0.00	0.000	0.000
12/31/2000	0.45	0.36	0.79		2.54	1.59	0.00	0.000	0.000
1/31/2001	0.45	0.35	0.76		2.55	1.60	0.00	0.000	0.000
2/28/2001	0.40	0.38	0.94		2.56	1.61	0.00	0.000	0.000
3/31/2001	0.40	0.36	0.91		2.58	1.62	0.00	0.000	0.000
4/30/2001	0.38	0.46	1.19		2.59	1.63	0.00	0.000	0.000



Date	Oil Rate (CD) m3/d	Water Rate (CD) m3/d	Water Oil Ratio m3/m3	Water Inj Rate (CD) m3/d	Cum Oil Prod Km3	Cum Water Prod Km3	Cum Water Inj Km3	VRR	Cum VRR
5/31/2001	0.39	0.43	1.10		2.60	1.65	0.00	0.000	0.000
6/30/2001	0.44	0.40	0.92		2.61	1.66	0.00	0.000	0.000
7/31/2001	0.40	0.40	1.02		2.63	1.67	0.00	0.000	0.000
8/31/2001	0.35	0.28	0.81		2.64	1.68	0.00	0.000	0.000
9/30/2001	0.33	0.28	0.83		2.65	1.69	0.00	0.000	0.000
10/31/2001	0.37	0.34	0.92		2.66	1.70	0.00	0.000	0.000
11/30/2001	0.35	0.41	1.15		2.67	1.71	0.00	0.000	0.000
12/31/2001	0.35	0.48	1.38		2.68	1.73	0.00	0.000	0.000
1/31/2002	0.32	0.44	1.39		2.69	1.74	0.00	0.000	0.000
2/28/2002	0.30	0.41	1.34		2.70	1.75	0.00	0.000	0.000
3/31/2002	0.34	0.41	1.23		2.71	1.76	0.00	0.000	0.000
4/30/2002	0.32	0.42	1.31		2.72	1.78	0.00	0.000	0.000
5/31/2002	0.32	0.45	1.39		2.73	1.79	0.00	0.000	0.000
6/30/2002	0.31	0.46	1.48		2.74	1.80	0.00	0.000	0.000
7/31/2002	0.29	0.47	1.59		2.75	1.82	0.00	0.000	0.000
8/31/2002	0.29	0.43	1.51		2.76	1.83	0.00	0.000	0.000
9/30/2002	0.43	0.59	1.38		2.77	1.85	0.00	0.000	0.000
10/31/2002	0.39	0.55	1.40		2.78	1.87	0.00	0.000	0.000
11/30/2002	0.17	0.42	2.49		2.79	1.88	0.00	0.000	0.000
12/31/2002	0.14	0.37	2.71		2.79	1.89	0.00	0.000	0.000
1/31/2003	0.13	0.36	2.71		2.79	1.90	0.00	0.000	0.000
2/28/2003	0.19	0.48	2.58		2.80	1.92	0.00	0.000	0.000
3/31/2003	0.19	0.48	2.57		2.80	1.93	0.00	0.000	0.000
4/30/2003	0.19	0.45	2.41		2.81	1.94	0.00	0.000	0.000
5/31/2003	0.17	0.41	2.44		2.82	1.96	0.00	0.000	0.000
6/30/2003	0.16	0.38	2.35		2.82	1.97	0.00	0.000	0.000
7/31/2003	0.16	0.38	2.41		2.83	1.98	0.00	0.000	0.000
8/31/2003	0.16	0.38	2.38		2.83	1.99	0.00	0.000	0.000
9/30/2003	0.16	0.39	2.37		2.84	2.00	0.00	0.000	0.000
10/31/2003	0.17	0.38	2.27		2.84	2.02	0.00	0.000	0.000
11/30/2003	0.14	0.36	2.55		2.84	2.03	0.00	0.000	0.000
12/31/2003	0.14	0.34	2.47		2.85	2.04	0.00	0.000	0.000
1/31/2004	0.14	0.36	2.57		2.85	2.05	0.00	0.000	0.000
2/29/2004	0.14	0.38	2.62		2.86	2.06	0.00	0.000	0.000
3/31/2004	0.18	0.46	2.55		2.86	2.07	0.00	0.000	0.000
4/30/2004	0.12	0.32	2.59		2.87	2.08	0.00	0.000	0.000
5/31/2004	0.12	0.29	2.50		2.87	2.09	0.00	0.000	0.000
6/30/2004	0.13	0.29	2.17		2.87	2.10	0.00	0.000	0.000
7/31/2004	0.13	0.29	2.22		2.88	2.11	0.00	0.000	0.000
8/31/2004	0.14	0.29	2.14		2.88	2.12	0.00	0.000	0.000
9/30/2004	0.14	0.36	2.51		2.89	2.13	0.00	0.000	0.000
10/31/2004	0.15	0.38	2.59		2.89	2.14	0.00	0.000	0.000
11/30/2004	0.15	0.40	2.73		2.90	2.15	0.00	0.000	0.000
12/31/2004	0.15	0.38	2.54		2.90	2.16	0.00	0.000	0.000
1/31/2005	0.15	0.39	2.65		2.91	2.18	0.00	0.000	0.000
2/28/2005	0.15	0.40	2.58		2.91	2.19	0.00	0.000	0.000

Date	Oil Rate (CD) m3/d	Water Rate (CD) m3/d	Water Oil Ratio m3/m3	Water Inj Rate (CD) m3/d	Cum Oil Prod Km3	Cum Water Prod Km3	Cum Water Inj Km3	VRR	Cum VRR
3/31/2005	0.16	0.39	2.47		2.91	2.20	0.00	0.000	0.000
4/30/2005	0.15	0.38	2.46		2.92	2.21	0.00	0.000	0.000
5/31/2005	0.15	0.38	2.46		2.92	2.22	0.00	0.000	0.000
6/30/2005	0.15	0.40	2.61		2.93	2.24	0.00	0.000	0.000
7/31/2005	0.15	0.41	2.67		2.93	2.25	0.00	0.000	0.000
8/31/2005	0.15	0.39	2.52		2.94	2.26	0.00	0.000	0.000
9/30/2005	0.15	0.41	2.65		2.94	2.27	0.00	0.000	0.000
10/31/2005	0.15	0.41	2.70		2.95	2.29	0.00	0.000	0.000
11/30/2005	0.15	0.41	2.67		2.95	2.30	0.00	0.000	0.000
12/31/2005	0.15	0.38	2.48		2.96	2.31	0.00	0.000	0.000
1/31/2006	0.16	0.39	2.42		2.96	2.32	0.00	0.000	0.000
2/28/2006	0.16	0.39	2.48		2.97	2.33	0.00	0.000	0.000
3/31/2006	0.15	0.39	2.50		2.97	2.34	0.00	0.000	0.000
4/30/2006	0.16	0.39	2.47		2.98	2.36	0.00	0.000	0.000
5/31/2006	0.16	0.39	2.47		2.98	2.37	0.00	0.000	0.000
6/30/2006	0.08	0.76	9.08		2.98	2.39	0.00	0.000	0.000
7/31/2006	0.04	1.11	28.67		2.98	2.43	0.00	0.000	0.000
8/31/2006	0.04	1.11	28.58		2.99	2.46	0.00	0.000	0.000
9/30/2006	0.04	0.72	19.55		2.99	2.48	0.00	0.000	0.000
10/31/2006	0.06	0.58	9.94		2.99	2.50	0.00	0.000	0.000
11/30/2006	0.07	0.58	8.65		2.99	2.52	0.00	0.000	0.000
12/31/2006	0.07	0.55	8.14		2.99	2.53	0.00	0.000	0.000
1/31/2007	0.08	0.50	6.50		2.99	2.55	0.00	0.000	0.000
2/28/2007	0.07	0.50	6.67		3.00	2.56	0.00	0.000	0.000
3/31/2007	0.07	0.50	6.78		3.00	2.58	0.00	0.000	0.000
4/30/2007	0.08	0.50	6.57		3.00	2.59	0.00	0.000	0.000
5/31/2007	0.08	0.51	6.63		3.00	2.61	0.00	0.000	0.000
6/30/2007	0.08	0.51	6.65		3.01	2.62	0.00	0.000	0.000
7/31/2007	0.08	0.62	7.68		3.01	2.64	0.00	0.000	0.000
8/31/2007	0.08	0.63	8.13		3.01	2.66	0.00	0.000	0.000
9/30/2007	0.08	0.61	7.91		3.01	2.68	0.00	0.000	0.000
10/31/2007	0.07	0.50	7.38		3.02	2.70	0.00	0.000	0.000
11/30/2007	0.07	0.51	7.70		3.02	2.71	0.00	0.000	0.000
12/31/2007	0.06	0.56	8.65		3.02	2.73	0.00	0.000	0.000
1/31/2008	0.07	0.60	8.90		3.02	2.75	0.00	0.000	0.000
2/29/2008	0.07	0.59	9.05		3.02	2.77	0.00	0.000	0.000
3/31/2008	0.06	0.51	7.85		3.03	2.78	0.00	0.000	0.000
4/30/2008	0.07	0.50	7.45		3.03	2.80	0.00	0.000	0.000
5/31/2008	0.07	0.50	7.43		3.03	2.81	0.00	0.000	0.000
6/30/2008	0.07	0.58	8.70		3.03	2.83	0.00	0.000	0.000
7/31/2008	0.07	0.70	10.33		3.03	2.85	0.00	0.000	0.000
8/31/2008	0.07	0.62	8.68		3.04	2.87	0.00	0.000	0.000
9/30/2008	0.06	0.60	9.47		3.04	2.89	0.00	0.000	0.000
10/31/2008	0.07	0.61	9.00		3.04	2.91	0.00	0.000	0.000
11/30/2008	0.07	0.60	9.00		3.04	2.92	0.00	0.000	0.000
12/31/2008	0.07	0.58	8.57		3.04	2.94	0.00	0.000	0.000

Date	Oil Rate (CD) m3/d	Water Rate (CD) m3/d	Water Oil Ratio m3/m3	Water Inj Rate (CD) m3/d	Cum Oil Prod Km3	Cum Water Prod Km3	Cum Water Inj Km3	VRR	Cum VRR
1/31/2009	0.07	0.51	7.14		3.05	2.96	0.00	0.000	0.000
2/28/2009	0.07	0.57	7.95		3.05	2.97	0.00	0.000	0.000
3/31/2009	0.07	0.50	7.33		3.05	2.99	0.00	0.000	0.000
4/30/2009	0.07	0.47	7.00		3.05	3.00	0.00	0.000	0.000
5/31/2009	0.07	0.47	6.90		3.05	3.02	0.00	0.000	0.000
6/30/2009	0.06	0.52	8.21		3.06	3.03	0.00	0.000	0.000
7/31/2009	0.06	0.51	7.90		3.06	3.05	0.00	0.000	0.000
8/31/2009	0.07	0.53	7.86		3.06	3.07	0.00	0.000	0.000
9/30/2009	0.07	0.53	7.52		3.06	3.08	0.00	0.000	0.000
10/31/2009	0.07	0.47	6.90		3.06	3.10	0.00	0.000	0.000
11/30/2009	0.07	0.49	7.40		3.07	3.11	0.00	0.000	0.000
12/31/2009	0.02	0.15	7.50		3.07	3.12	0.00	0.000	0.000
1/31/2010					3.07	3.12	0.00		0.000
2/28/2010					3.07	3.12	0.00		0.000
3/31/2010					3.07	3.12	0.00		0.000
4/30/2010					3.07	3.12	0.00		0.000
5/31/2010					3.07	3.12	0.00		0.000
6/30/2010					3.07	3.12	0.00		0.000
7/31/2010					3.07	3.12	0.00		0.000
8/31/2010					3.07	3.12	0.00		0.000
9/30/2010					3.07	3.12	0.00		0.000
10/31/2010					3.07	3.12	0.00		0.000
11/30/2010					3.07	3.12	0.00		0.000
12/31/2010					3.07	3.12	0.00		0.000
1/31/2011					3.07	3.12	0.00		0.000
2/28/2011					3.07	3.12	0.00		0.000
3/31/2011					3.07	3.12	0.00		0.000
4/30/2011					3.07	3.12	0.00		0.000
5/31/2011					3.07	3.12	0.00		0.000
6/30/2011					3.07	3.12	0.00		0.000
7/31/2011	0.14	0.00	0.00		3.07	3.12	0.00	0.000	0.000
8/31/2011	0.00	14.61			3.07	3.57	0.00	0.000	0.000
9/30/2011	1.25	36.11	28.97		3.11	4.65	0.00	0.000	0.000
10/31/2011	1.87	45.25	24.22		3.17	6.05	0.00	0.000	0.000
11/30/2011	2.76	41.48	15.01		3.25	7.30	0.00	0.000	0.000
12/31/2011	3.64	43.07	11.84		3.36	8.63	0.00	0.000	0.000
1/31/2012	4.94	43.13	8.74		3.52	9.97	0.00	0.000	0.000
2/29/2012	4.64	41.08	8.84		3.65	11.16	0.00	0.000	0.000
3/31/2012	4.70	41.54	8.84		3.80	12.45	0.00	0.000	0.000
4/30/2012	4.88	42.85	8.78		3.94	13.74	0.00	0.000	0.000
5/31/2012	5.74	49.86	8.69		4.12	15.28	0.00	0.000	0.000
6/30/2012	5.00	44.10	8.83		4.27	16.60	0.00	0.000	0.000
7/31/2012	2.70	24.68	9.14		4.35	17.37	0.00	0.000	0.000
8/31/2012	4.96	51.00	10.28		4.51	18.95	0.00	0.000	0.000
9/30/2012	5.22	58.48	11.21		4.66	20.71	0.00	0.000	0.000
10/31/2012	5.14	58.42	11.38		4.82	22.52	0.00	0.000	0.000

Date	Oil Rate (CD) m3/d	Water Rate (CD) m3/d	Water Oil Ratio m3/m3	Water Inj Rate (CD) m3/d	Cum Oil Prod Km3	Cum Water Prod Km3	Cum Water Inj Km3	VRR	Cum VRR
11/30/2012	6.59	60.75	9.22		5.02	24.34	0.00	0.000	0.000
12/31/2012	7.70	64.63	8.39		5.26	26.34	0.00	0.000	0.000
1/31/2013	7.47	62.14	8.32		5.49	28.27	0.00	0.000	0.000
2/28/2013	7.96	60.46	7.59		5.71	29.96	0.00	0.000	0.000
3/31/2013	8.13	61.75	7.59		5.97	31.88	0.00	0.000	0.000
4/30/2013	6.57	56.78	8.65		6.16	33.58	0.00	0.000	0.000
5/31/2013	5.45	43.98	8.07		6.33	34.94	0.00	0.000	0.000
6/30/2013	5.93	47.92	8.08		6.51	36.38	0.00	0.000	0.000
7/31/2013	5.98	48.40	8.09		6.70	37.88	0.00	0.000	0.000
8/31/2013	8.05	52.11	6.47		6.95	39.50	0.00	0.000	0.000
9/30/2013	6.71	50.34	7.50		7.15	41.01	0.00	0.000	0.000
10/31/2013	5.14	38.49	7.48		7.31	42.20	0.00	0.000	0.000
11/30/2013	4.69	37.72	8.04		7.45	43.33	0.00	0.000	0.000
12/31/2013	4.12	35.75	8.69		7.57	44.44	0.00	0.000	0.000
1/31/2014	5.04	33.55	6.66		7.73	45.48	0.00	0.000	0.000
2/28/2014	5.01	33.50	6.68		7.87	46.42	0.00	0.000	0.000
3/31/2014	4.90	33.49	6.84		8.02	47.45	0.00	0.000	0.000
4/30/2014	4.09	24.14	5.90		8.15	48.18	0.00	0.000	0.000
5/31/2014	3.62	16.59	4.59		8.26	48.69	0.00	0.000	0.000
6/30/2014	3.65	58.56	16.05		8.37	50.45	0.00	0.000	0.000
7/31/2014	3.11	57.98	18.65		8.46	52.25	0.00	0.000	0.000
8/31/2014	2.41	42.13	17.47		8.54	53.55	0.00	0.000	0.000
9/30/2014	1.76	43.31	24.58		8.59	54.85	0.00	0.000	0.000
10/31/2014	2.28	56.64	24.82		8.66	56.61	0.00	0.000	0.000
11/30/2014	1.71	25.00	14.66		8.71	57.36	0.00	0.000	0.000
12/31/2014	1.73	36.80	21.30		8.77	58.50	0.00	0.000	0.000
1/31/2015	1.65	9.60	5.82		8.82	58.80	0.00	0.000	0.000
2/28/2015	1.59	9.31	5.84		8.86	59.06	0.00	0.000	0.000
3/31/2015	1.42	9.37	6.61		8.91	59.35	0.00	0.000	0.000
4/30/2015	1.99	7.40	3.72		8.97	59.57	0.00	0.000	0.000
5/31/2015	2.55	6.74	2.64		9.04	59.78	0.00	0.000	0.000
6/30/2015	1.53	26.57	17.36		9.09	60.58	0.00	0.000	0.000
7/31/2015	1.44	58.03	40.25		9.14	62.37	0.00	0.000	0.000
8/31/2015	2.06	64.69	31.43		9.20	64.38	0.00	0.000	0.000
9/30/2015	2.06	62.67	30.42		9.26	66.26	0.00	0.000	0.000
10/31/2015	1.45	4.57	3.15		9.31	66.40	0.00	0.000	0.000
11/30/2015	2.04	8.85	4.35		9.37	66.67	0.00	0.000	0.000
12/31/2015	1.10	7.46	6.78		9.40	66.90	0.00	0.000	0.000
1/31/2016	1.00	7.41	7.39		9.43	67.13	0.00	0.000	0.000
2/29/2016	0.54	0.55	1.01		9.45	67.14	0.00	0.000	0.000
3/31/2016	0.52	0.59	1.15		9.46	67.16	0.00	0.000	0.000
4/30/2016	0.50	0.56	1.12		9.48	67.18	0.00	0.000	0.000
5/31/2016	0.54	0.64	1.19		9.50	67.20	0.00	0.000	0.000
6/30/2016	0.53	0.63	1.19		9.51	67.22	0.00	0.000	0.000
7/31/2016	0.67	2.15	3.22		9.53	67.29	0.00	0.000	0.000
8/31/2016	1.30	10.48	8.09		9.57	67.61	0.00	0.000	0.000

Date	Oil Rate (CD) m3/d	Water Rate (CD) m3/d	Water Oil Ratio m3/m3	Water Inj Rate (CD) m3/d	Cum Oil Prod Km3	Cum Water Prod Km3	Cum Water Inj Km3	VRR	Cum VRR
9/30/2016	1.18	10.55	8.92		9.61	67.93	0.00	0.000	0.000
10/31/2016	1.33	10.07	7.55		9.65	68.24	0.00	0.000	0.000
11/30/2016	1.42	10.04	7.07		9.69	68.54	0.00	0.000	0.000
12/31/2016	1.22	9.54	7.82		9.73	68.84	0.00	0.000	0.000
1/31/2017	1.29	9.19	7.15		9.77	69.12	0.00	0.000	0.000
2/28/2017	1.65	8.19	4.96		9.82	69.35	0.00	0.000	0.000
3/31/2017	1.68	8.01	4.76		9.87	69.60	0.00	0.000	0.000
4/30/2017	1.25	8.00	6.37		9.91	69.84	0.00	0.000	0.000
5/31/2017	1.20	8.36	6.97		9.94	70.10	0.00	0.000	0.000
6/30/2017	1.43	8.43	5.91		9.99	70.35	0.00	0.000	0.000
7/31/2017	1.69	7.45	4.40		10.04	70.58	0.00	0.000	0.000
8/31/2017	1.69	7.13	4.22		10.09	70.80	0.00	0.000	0.000
9/30/2017	1.59	7.16	4.50		10.14	71.02	0.00	0.000	0.000
10/31/2017	1.51	7.20	4.77		10.19	71.24	0.00	0.000	0.000
11/30/2017	1.74	5.92	3.41		10.24	71.42	0.00	0.000	0.000
12/31/2017	1.35	7.18	5.30	3.35	10.28	71.64	0.10	0.389	0.001

# Pattern: 00/09-29-010-28Inj Set: DalyUnit#8BKKN

Oil Formation Vol Factor : 1.07100 m3/m3

Water Formation Vol Factor : 1.00150 m3/m3

Water / Oil Ratio : 6.56 m3/m3

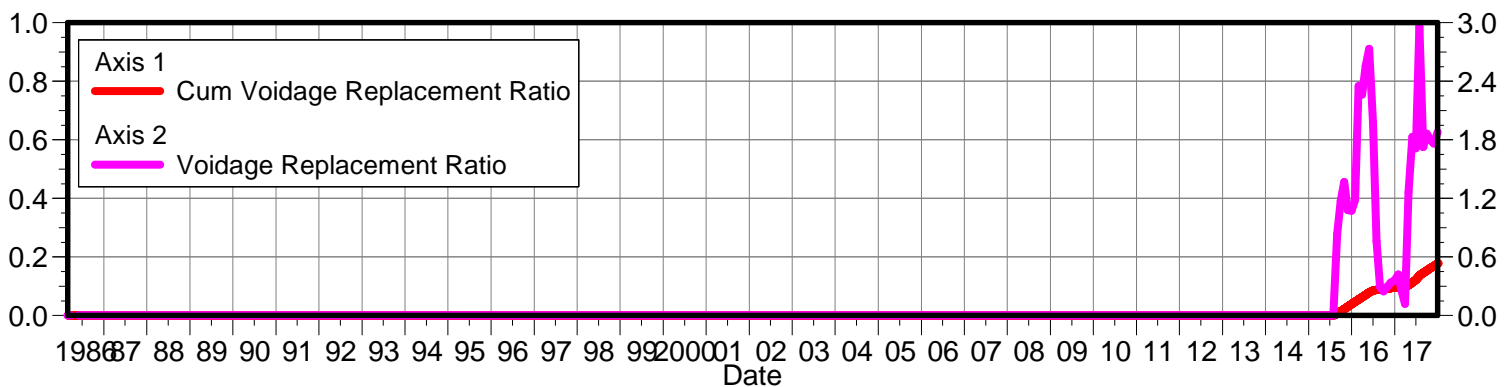
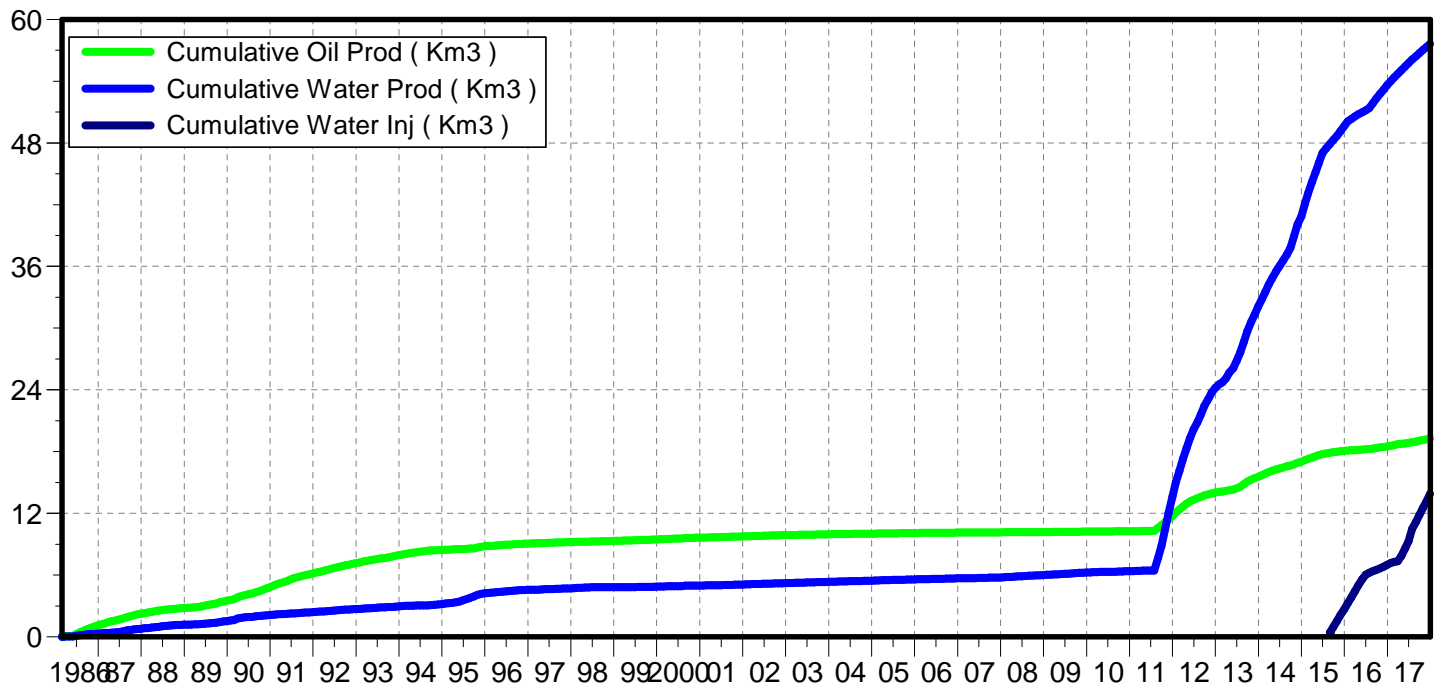
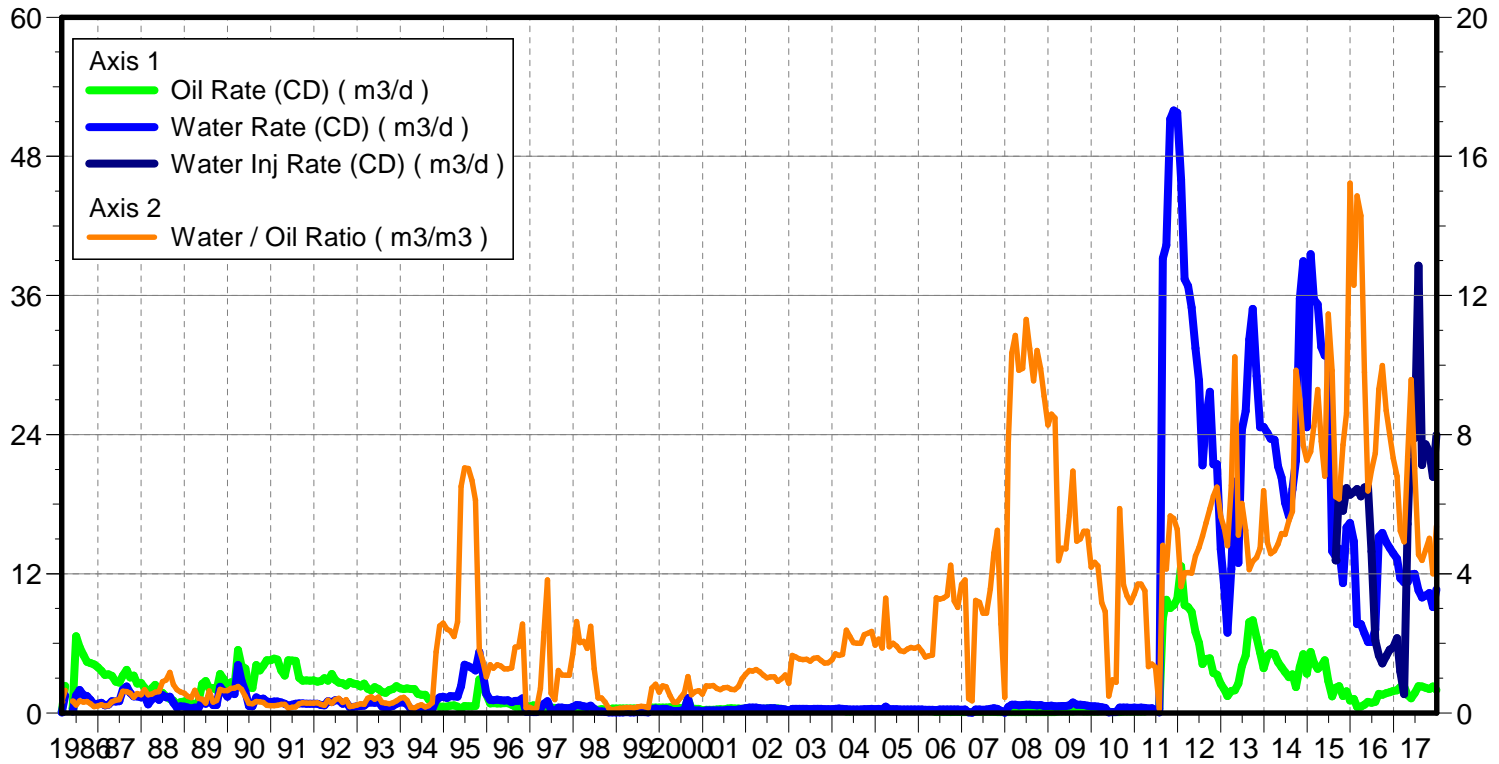
June 06, 2018

Operator: TUNDRA\_OIL\_AND\_GAS\_PARTNER

Oil Rate (CD) : 2.30 m3/d

Water Rate (CD) : 10.28 m3/d

Water Inj Rate (CD) : 23.86 m3/d



Date	Oil Rate (CD) m3/d	Water Rate (CD) m3/d	Water Oil Ratio m3/m3	Water Inj Rate (CD) m3/d	Cum Oil Prod Km3	Cum Water Prod Km3	Cum Water Inj Km3	VRR	Cum VRR
1/31/1986					0.00	0.00	0.00		
2/28/1986	0.10	0.03	0.32		0.00	0.00	0.00	0.000	0.000
3/31/1986	2.32	1.51	0.65		0.07	0.05	0.00	0.000	0.000
4/30/1986					0.07	0.05	0.00		0.000
5/31/1986	0.38	0.13	0.34		0.09	0.05	0.00	0.000	0.000
6/30/1986	6.62	1.51	0.23		0.29	0.10	0.00	0.000	0.000
7/31/1986	5.66	1.96	0.35		0.46	0.16	0.00	0.000	0.000
8/31/1986	4.97	1.55	0.31		0.61	0.21	0.00	0.000	0.000
9/30/1986	4.41	1.46	0.33		0.75	0.25	0.00	0.000	0.000
10/31/1986	4.30	1.12	0.26		0.88	0.28	0.00	0.000	0.000
11/30/1986	4.17	0.74	0.18		1.01	0.31	0.00	0.000	0.000
12/31/1986	3.92	0.78	0.20		1.13	0.33	0.00	0.000	0.000
1/31/1987	3.64	0.86	0.24		1.24	0.36	0.00	0.000	0.000
2/28/1987	3.29	0.66	0.20		1.33	0.38	0.00	0.000	0.000
3/31/1987	3.33	0.70	0.21		1.44	0.40	0.00	0.000	0.000
4/30/1987	3.18	1.00	0.32		1.53	0.43	0.00	0.000	0.000
5/31/1987	2.69	0.98	0.37		1.61	0.46	0.00	0.000	0.000
6/30/1987	2.62	1.01	0.39		1.69	0.49	0.00	0.000	0.000
7/31/1987	3.22	1.99	0.62		1.79	0.55	0.00	0.000	0.000
8/31/1987	3.72	2.28	0.61		1.91	0.62	0.00	0.000	0.000
9/30/1987	3.05	1.73	0.57		2.00	0.67	0.00	0.000	0.000
10/31/1987	3.21	1.42	0.44		2.10	0.72	0.00	0.000	0.000
11/30/1987	2.53	1.41	0.56		2.17	0.76	0.00	0.000	0.000
12/31/1987	2.57	1.35	0.52		2.25	0.80	0.00	0.000	0.000
1/31/1988	2.17	1.46	0.67		2.32	0.85	0.00	0.000	0.000
2/29/1988	1.40	0.72	0.52		2.36	0.87	0.00	0.000	0.000
3/31/1988	2.13	1.15	0.54		2.43	0.90	0.00	0.000	0.000
4/30/1988	2.41	1.42	0.59		2.50	0.95	0.00	0.000	0.000
5/31/1988	1.84	1.12	0.61		2.56	0.98	0.00	0.000	0.000
6/30/1988	1.72	1.54	0.90		2.61	1.03	0.00	0.000	0.000
7/31/1988	1.43	1.35	0.94		2.65	1.07	0.00	0.000	0.000
8/31/1988	1.19	1.39	1.17		2.69	1.11	0.00	0.000	0.000
9/30/1988	1.05	0.86	0.82		2.72	1.14	0.00	0.000	0.000
10/31/1988	0.67	0.45	0.67		2.74	1.15	0.00	0.000	0.000
11/30/1988	0.93	0.56	0.60		2.77	1.17	0.00	0.000	0.000
12/31/1988	0.97	0.55	0.57		2.80	1.18	0.00	0.000	0.000
1/31/1989	0.94	0.45	0.48		2.83	1.20	0.00	0.000	0.000
2/28/1989	0.84	0.37	0.44		2.85	1.21	0.00	0.000	0.000
3/31/1989	0.73	0.47	0.65		2.88	1.22	0.00	0.000	0.000
4/30/1989	0.93	0.39	0.42		2.90	1.24	0.00	0.000	0.000
5/31/1989	2.50	0.97	0.39		2.98	1.27	0.00	0.000	0.000
6/30/1989	2.76	0.79	0.29		3.06	1.29	0.00	0.000	0.000
7/31/1989	2.12	1.33	0.63		3.13	1.33	0.00	0.000	0.000
8/31/1989	2.15	0.67	0.31		3.20	1.35	0.00	0.000	0.000
9/30/1989	1.97	0.69	0.35		3.25	1.37	0.00	0.000	0.000
10/31/1989	3.34	2.26	0.68		3.36	1.44	0.00	0.000	0.000

Date	Oil Rate (CD) m3/d	Water Rate (CD) m3/d	Water Oil Ratio m3/m3	Water Inj Rate (CD) m3/d	Cum Oil Prod Km3	Cum Water Prod Km3	Cum Water Inj Km3	VRR	Cum VRR
11/30/1989	2.91	1.87	0.64		3.45	1.50	0.00	0.000	0.000
12/31/1989	2.18	1.39	0.64		3.51	1.54	0.00	0.000	0.000
1/31/1990	2.63	1.86	0.71		3.60	1.60	0.00	0.000	0.000
2/28/1990	2.26	1.62	0.72		3.66	1.64	0.00	0.000	0.000
3/31/1990	5.44	4.13	0.76		3.83	1.77	0.00	0.000	0.000
4/30/1990	4.05	2.75	0.68		3.95	1.85	0.00	0.000	0.000
5/31/1990	3.84	1.83	0.48		4.07	1.91	0.00	0.000	0.000
6/30/1990	2.22	0.60	0.27		4.13	1.93	0.00	0.000	0.000
7/31/1990	2.15	0.57	0.27		4.20	1.95	0.00	0.000	0.000
8/31/1990	4.12	1.35	0.33		4.33	1.99	0.00	0.000	0.000
9/30/1990	3.66	1.17	0.32		4.44	2.02	0.00	0.000	0.000
10/31/1990	4.08	1.22	0.30		4.56	2.06	0.00	0.000	0.000
11/30/1990	4.55	0.99	0.22		4.70	2.09	0.00	0.000	0.000
12/31/1990	4.53	0.94	0.21		4.84	2.12	0.00	0.000	0.000
1/31/1991	4.67	0.98	0.21		4.99	2.15	0.00	0.000	0.000
2/28/1991	4.60	0.98	0.21		5.12	2.18	0.00	0.000	0.000
3/31/1991	3.67	0.90	0.24		5.23	2.21	0.00	0.000	0.000
4/30/1991	3.23	0.80	0.25		5.33	2.23	0.00	0.000	0.000
5/31/1991	4.53	0.61	0.13		5.47	2.25	0.00	0.000	0.000
6/30/1991	4.50	0.71	0.16		5.60	2.27	0.00	0.000	0.000
7/31/1991	4.48	0.78	0.17		5.74	2.29	0.00	0.000	0.000
8/31/1991	3.04	0.80	0.26		5.83	2.32	0.00	0.000	0.000
9/30/1991	2.78	0.81	0.29		5.92	2.34	0.00	0.000	0.000
10/31/1991	2.81	0.78	0.28		6.00	2.37	0.00	0.000	0.000
11/30/1991	2.78	0.78	0.28		6.09	2.39	0.00	0.000	0.000
12/31/1991	2.80	0.78	0.28		6.17	2.42	0.00	0.000	0.000
1/31/1992	2.69	0.78	0.29		6.26	2.44	0.00	0.000	0.000
2/29/1992	2.74	0.67	0.24		6.34	2.46	0.00	0.000	0.000
3/31/1992	3.00	0.65	0.22		6.43	2.48	0.00	0.000	0.000
4/30/1992	2.77	1.01	0.36		6.51	2.51	0.00	0.000	0.000
5/31/1992	3.36	0.92	0.27		6.62	2.54	0.00	0.000	0.000
6/30/1992	2.84	1.09	0.38		6.70	2.57	0.00	0.000	0.000
7/31/1992	2.61	1.10	0.42		6.78	2.61	0.00	0.000	0.000
8/31/1992	2.55	0.78	0.30		6.86	2.63	0.00	0.000	0.000
9/30/1992	2.35	0.91	0.39		6.93	2.66	0.00	0.000	0.000
10/31/1992	2.67	0.49	0.18		7.02	2.67	0.00	0.000	0.000
11/30/1992	2.53	0.50	0.20		7.09	2.69	0.00	0.000	0.000
12/31/1992	2.47	0.56	0.23		7.17	2.70	0.00	0.000	0.000
1/31/1993	2.29	0.60	0.26		7.24	2.72	0.00	0.000	0.000
2/28/1993	2.53	0.63	0.25		7.31	2.74	0.00	0.000	0.000
3/31/1993	2.08	0.87	0.42		7.38	2.77	0.00	0.000	0.000
4/30/1993	1.94	0.91	0.47		7.43	2.79	0.00	0.000	0.000
5/31/1993	2.22	0.88	0.40		7.50	2.82	0.00	0.000	0.000
6/30/1993	2.06	0.94	0.46		7.56	2.85	0.00	0.000	0.000
7/31/1993	1.81	0.55	0.30		7.62	2.87	0.00	0.000	0.000
8/31/1993	1.72	0.48	0.28		7.67	2.88	0.00	0.000	0.000



Date	Oil Rate (CD) m3/d	Water Rate (CD) m3/d	Water Oil Ratio m3/m3	Water Inj Rate (CD) m3/d	Cum Oil Prod Km3	Cum Water Prod Km3	Cum Water Inj Km3	VRR	Cum VRR
9/30/1993	1.98	0.52	0.26		7.73	2.90	0.00	0.000	0.000
10/31/1993	2.05	0.60	0.29		7.80	2.92	0.00	0.000	0.000
11/30/1993	2.31	0.80	0.34		7.87	2.94	0.00	0.000	0.000
12/31/1993	2.11	0.89	0.42		7.93	2.97	0.00	0.000	0.000
1/31/1994	2.06	0.91	0.44		8.00	3.00	0.00	0.000	0.000
2/28/1994	2.10	0.77	0.37		8.05	3.02	0.00	0.000	0.000
3/31/1994	2.05	0.32	0.15		8.12	3.03	0.00	0.000	0.000
4/30/1994	2.06	0.27	0.13		8.18	3.04	0.00	0.000	0.000
5/31/1994	1.66	0.32	0.19		8.23	3.05	0.00	0.000	0.000
6/30/1994	1.57	0.37	0.23		8.28	3.06	0.00	0.000	0.000
7/31/1994	1.57	0.27	0.17		8.33	3.06	0.00	0.000	0.000
8/31/1994	1.16	0.25	0.21		8.36	3.07	0.00	0.000	0.000
9/30/1994	1.07	0.32	0.30		8.40	3.08	0.00	0.000	0.000
10/31/1994	0.62	1.08	1.75		8.41	3.12	0.00	0.000	0.000
11/30/1994	0.54	1.35	2.49		8.43	3.16	0.00	0.000	0.000
12/31/1994	0.54	1.40	2.58		8.45	3.20	0.00	0.000	0.000
1/31/1995	0.54	1.29	2.40		8.46	3.24	0.00	0.000	0.000
2/28/1995	0.61	1.45	2.36		8.48	3.28	0.00	0.000	0.000
3/31/1995	0.65	1.42	2.19		8.50	3.32	0.00	0.000	0.000
4/30/1995	0.53	1.39	2.62		8.52	3.37	0.00	0.000	0.000
5/31/1995	0.35	2.31	6.51		8.53	3.44	0.00	0.000	0.000
6/30/1995	0.59	4.15	7.04		8.55	3.56	0.00	0.000	0.000
7/31/1995	0.57	4.01	7.02		8.56	3.69	0.00	0.000	0.000
8/31/1995	0.58	3.88	6.68		8.58	3.81	0.00	0.000	0.000
9/30/1995	0.60	3.67	6.12		8.60	3.92	0.00	0.000	0.000
10/31/1995	2.90	5.26	1.82		8.69	4.08	0.00	0.000	0.000
11/30/1995	2.29	3.41	1.49		8.76	4.18	0.00	0.000	0.000
12/31/1995	1.59	1.65	1.03		8.81	4.23	0.00	0.000	0.000
1/31/1996	0.81	1.13	1.39		8.83	4.27	0.00	0.000	0.000
2/29/1996	0.86	1.10	1.28		8.86	4.30	0.00	0.000	0.000
3/31/1996	0.83	1.15	1.39		8.88	4.33	0.00	0.000	0.000
4/30/1996	0.80	1.08	1.35		8.91	4.37	0.00	0.000	0.000
5/31/1996	0.84	1.06	1.26		8.93	4.40	0.00	0.000	0.000
6/30/1996	0.85	1.08	1.27		8.96	4.43	0.00	0.000	0.000
7/31/1996	0.72	0.93	1.30		8.98	4.46	0.00	0.000	0.000
8/31/1996	0.55	1.04	1.89		9.00	4.49	0.00	0.000	0.000
9/30/1996	0.54	1.03	1.90		9.02	4.52	0.00	0.000	0.000
10/31/1996	0.49	1.26	2.55		9.03	4.56	0.00	0.000	0.000
11/30/1996	0.61	0.09	0.15		9.05	4.57	0.00	0.000	0.000
12/31/1996	0.55	0.09	0.16		9.07	4.57	0.00	0.000	0.000
1/31/1997	0.66	0.08	0.12		9.09	4.57	0.00	0.000	0.000
2/28/1997	0.58	0.07	0.13		9.10	4.57	0.00	0.000	0.000
3/31/1997	0.54	0.38	0.71		9.12	4.59	0.00	0.000	0.000
4/30/1997	0.34	0.79	2.31		9.13	4.61	0.00	0.000	0.000
5/31/1997	0.27	1.02	3.82		9.14	4.64	0.00	0.000	0.000
6/30/1997	0.45	0.25	0.57		9.15	4.65	0.00	0.000	0.000

Date	Oil Rate (CD) m3/d	Water Rate (CD) m3/d	Water Oil Ratio m3/m3	Water Inj Rate (CD) m3/d	Cum Oil Prod Km3	Cum Water Prod Km3	Cum Water Inj Km3	VRR	Cum VRR
7/31/1997	0.43	0.16	0.38		9.16	4.65	0.00	0.000	0.000
8/31/1997	0.38	0.47	1.22		9.18	4.67	0.00	0.000	0.000
9/30/1997	0.42	0.46	1.09		9.19	4.68	0.00	0.000	0.000
10/31/1997	0.37	0.40	1.08		9.20	4.69	0.00	0.000	0.000
11/30/1997	0.38	0.41	1.08		9.21	4.71	0.00	0.000	0.000
12/31/1997	0.30	0.51	1.69		9.22	4.72	0.00	0.000	0.000
1/31/1998	0.26	0.68	2.63		9.23	4.74	0.00	0.000	0.000
2/28/1998	0.33	0.66	2.02		9.24	4.76	0.00	0.000	0.000
3/31/1998	0.28	0.58	2.06		9.25	4.78	0.00	0.000	0.000
4/30/1998	0.27	0.50	1.85		9.26	4.79	0.00	0.000	0.000
5/31/1998	0.25	0.62	2.49		9.26	4.81	0.00	0.000	0.000
6/30/1998	0.27	0.34	1.26		9.27	4.82	0.00	0.000	0.000
7/31/1998	0.28	0.12	0.43		9.28	4.83	0.00	0.000	0.000
8/31/1998	0.31	0.13	0.43		9.29	4.83	0.00	0.000	0.000
9/30/1998	0.30	0.09	0.31		9.30	4.83	0.00	0.000	0.000
10/31/1998	0.27	0.04	0.13		9.31	4.84	0.00	0.000	0.000
11/30/1998	0.38	0.03	0.09		9.32	4.84	0.00	0.000	0.000
12/31/1998	0.38	0.04	0.11		9.33	4.84	0.00	0.000	0.000
1/31/1999	0.37	0.05	0.14		9.34	4.84	0.00	0.000	0.000
2/28/1999	0.37	0.05	0.14		9.35	4.84	0.00	0.000	0.000
3/31/1999	0.38	0.06	0.15		9.36	4.84	0.00	0.000	0.000
4/30/1999	0.37	0.06	0.15		9.37	4.84	0.00	0.000	0.000
5/31/1999	0.38	0.05	0.14		9.39	4.85	0.00	0.000	0.000
6/30/1999	0.37	0.06	0.17		9.40	4.85	0.00	0.000	0.000
7/31/1999	0.38	0.07	0.19		9.41	4.85	0.00	0.000	0.000
8/31/1999	0.39	0.07	0.18		9.42	4.85	0.00	0.000	0.000
9/30/1999	0.40	0.06	0.14		9.43	4.85	0.00	0.000	0.000
10/31/1999	0.47	0.33	0.71		9.45	4.86	0.00	0.000	0.000
11/30/1999	0.47	0.39	0.82		9.46	4.88	0.00	0.000	0.000
12/31/1999	0.47	0.28	0.60		9.48	4.88	0.00	0.000	0.000
1/31/2000	0.45	0.35	0.78		9.49	4.90	0.00	0.000	0.000
2/29/2000	0.47	0.35	0.75		9.50	4.91	0.00	0.000	0.000
3/31/2000	0.48	0.24	0.49		9.52	4.91	0.00	0.000	0.000
4/30/2000	0.47	0.14	0.30		9.53	4.92	0.00	0.000	0.000
5/31/2000	0.45	0.14	0.31		9.55	4.92	0.00	0.000	0.000
6/30/2000	0.41	0.18	0.44		9.56	4.93	0.00	0.000	0.000
7/31/2000	0.40	0.24	0.59		9.57	4.93	0.00	0.000	0.000
8/31/2000	1.22	1.28	1.04		9.61	4.97	0.00	0.000	0.000
9/30/2000	0.36	0.19	0.52		9.62	4.98	0.00	0.000	0.000
10/31/2000	0.35	0.22	0.61		9.63	4.99	0.00	0.000	0.000
11/30/2000	0.34	0.22	0.64		9.64	4.99	0.00	0.000	0.000
12/31/2000	0.23	0.13	0.54		9.65	5.00	0.00	0.000	0.000
1/31/2001	0.26	0.20	0.78		9.66	5.00	0.00	0.000	0.000
2/28/2001	0.27	0.21	0.77		9.66	5.01	0.00	0.000	0.000
3/31/2001	0.27	0.21	0.78		9.67	5.02	0.00	0.000	0.000
4/30/2001	0.28	0.20	0.70		9.68	5.02	0.00	0.000	0.000

Date	Oil Rate (CD) m3/d	Water Rate (CD) m3/d	Water Oil Ratio m3/m3	Water Inj Rate (CD) m3/d	Cum Oil Prod Km3	Cum Water Prod Km3	Cum Water Inj Km3	VRR	Cum VRR
5/31/2001	0.31	0.20	0.66		9.69	5.03	0.00	0.000	0.000
6/30/2001	0.29	0.21	0.72		9.70	5.03	0.00	0.000	0.000
7/31/2001	0.36	0.27	0.73		9.71	5.04	0.00	0.000	0.000
8/31/2001	0.40	0.27	0.67		9.72	5.05	0.00	0.000	0.000
9/30/2001	0.36	0.24	0.67		9.73	5.06	0.00	0.000	0.000
10/31/2001	0.38	0.29	0.76		9.75	5.07	0.00	0.000	0.000
11/30/2001	0.34	0.34	0.98		9.76	5.08	0.00	0.000	0.000
12/31/2001	0.36	0.40	1.11		9.77	5.09	0.00	0.000	0.000
1/31/2002	0.37	0.45	1.22		9.78	5.10	0.00	0.000	0.000
2/28/2002	0.38	0.45	1.20		9.79	5.12	0.00	0.000	0.000
3/31/2002	0.36	0.45	1.25		9.80	5.13	0.00	0.000	0.000
4/30/2002	0.35	0.41	1.18		9.81	5.14	0.00	0.000	0.000
5/31/2002	0.35	0.38	1.08		9.82	5.15	0.00	0.000	0.000
6/30/2002	0.37	0.38	1.01		9.83	5.17	0.00	0.000	0.000
7/31/2002	0.39	0.41	1.03		9.85	5.18	0.00	0.000	0.000
8/31/2002	0.38	0.39	1.03		9.86	5.19	0.00	0.000	0.000
9/30/2002	0.37	0.34	0.91		9.87	5.20	0.00	0.000	0.000
10/31/2002	0.35	0.34	0.98		9.88	5.21	0.00	0.000	0.000
11/30/2002	0.27	0.29	1.09		9.89	5.22	0.00	0.000	0.000
12/31/2002	0.21	0.18	0.85		9.89	5.23	0.00	0.000	0.000
1/31/2003	0.21	0.35	1.65		9.90	5.24	0.00	0.000	0.000
2/28/2003	0.23	0.36	1.60		9.91	5.25	0.00	0.000	0.000
3/31/2003	0.23	0.35	1.55		9.91	5.26	0.00	0.000	0.000
4/30/2003	0.23	0.35	1.54		9.92	5.27	0.00	0.000	0.000
5/31/2003	0.22	0.34	1.54		9.93	5.28	0.00	0.000	0.000
6/30/2003	0.21	0.32	1.48		9.93	5.29	0.00	0.000	0.000
7/31/2003	0.22	0.34	1.57		9.94	5.30	0.00	0.000	0.000
8/31/2003	0.21	0.34	1.59		9.95	5.31	0.00	0.000	0.000
9/30/2003	0.22	0.34	1.51		9.95	5.32	0.00	0.000	0.000
10/31/2003	0.22	0.32	1.43		9.96	5.33	0.00	0.000	0.000
11/30/2003	0.23	0.33	1.44		9.97	5.34	0.00	0.000	0.000
12/31/2003	0.22	0.33	1.52		9.97	5.35	0.00	0.000	0.000
1/31/2004	0.20	0.35	1.70		9.98	5.36	0.00	0.000	0.000
2/29/2004	0.22	0.37	1.66		9.99	5.37	0.00	0.000	0.000
3/31/2004	0.21	0.36	1.68		9.99	5.38	0.00	0.000	0.000
4/30/2004	0.14	0.33	2.38		10.00	5.39	0.00	0.000	0.000
5/31/2004	0.14	0.30	2.19		10.00	5.40	0.00	0.000	0.000
6/30/2004	0.15	0.30	2.02		10.01	5.41	0.00	0.000	0.000
7/31/2004	0.15	0.30	2.00		10.01	5.42	0.00	0.000	0.000
8/31/2004	0.15	0.30	2.00		10.02	5.43	0.00	0.000	0.000
9/30/2004	0.15	0.33	2.25		10.02	5.44	0.00	0.000	0.000
10/31/2004	0.15	0.33	2.29		10.02	5.45	0.00	0.000	0.000
11/30/2004	0.15	0.34	2.34		10.03	5.46	0.00	0.000	0.000
12/31/2004	0.17	0.33	1.94		10.03	5.47	0.00	0.000	0.000
1/31/2005	0.16	0.34	2.12		10.04	5.48	0.00	0.000	0.000
2/28/2005	0.16	0.29	1.86		10.04	5.49	0.00	0.000	0.000

Date	Oil Rate (CD) m3/d	Water Rate (CD) m3/d	Water Oil Ratio m3/m3	Water Inj Rate (CD) m3/d	Cum Oil Prod Km3	Cum Water Prod Km3	Cum Water Inj Km3	VRR	Cum VRR
3/31/2005	0.16	0.53	3.30		10.05	5.50	0.00	0.000	0.000
4/30/2005	0.16	0.31	1.90		10.05	5.51	0.00	0.000	0.000
5/31/2005	0.16	0.32	2.00		10.06	5.52	0.00	0.000	0.000
6/30/2005	0.16	0.31	1.92		10.06	5.53	0.00	0.000	0.000
7/31/2005	0.17	0.30	1.79		10.07	5.54	0.00	0.000	0.000
8/31/2005	0.16	0.29	1.76		10.07	5.55	0.00	0.000	0.000
9/30/2005	0.16	0.30	1.84		10.08	5.56	0.00	0.000	0.000
10/31/2005	0.16	0.30	1.88		10.08	5.57	0.00	0.000	0.000
11/30/2005	0.16	0.30	1.86		10.09	5.58	0.00	0.000	0.000
12/31/2005	0.16	0.30	1.90		10.09	5.59	0.00	0.000	0.000
1/31/2006	0.17	0.30	1.77		10.10	5.60	0.00	0.000	0.000
2/28/2006	0.17	0.28	1.60		10.10	5.60	0.00	0.000	0.000
3/31/2006	0.16	0.27	1.65		10.11	5.61	0.00	0.000	0.000
4/30/2006	0.17	0.28	1.66		10.11	5.62	0.00	0.000	0.000
5/31/2006	0.07	0.25	3.30		10.12	5.63	0.00	0.000	0.000
6/30/2006	0.09	0.28	3.27		10.12	5.64	0.00	0.000	0.000
7/31/2006	0.09	0.29	3.30		10.12	5.65	0.00	0.000	0.000
8/31/2006	0.09	0.29	3.37		10.12	5.66	0.00	0.000	0.000
9/30/2006	0.07	0.28	4.25		10.13	5.66	0.00	0.000	0.000
10/31/2006	0.09	0.29	3.21		10.13	5.67	0.00	0.000	0.000
11/30/2006	0.10	0.29	3.03		10.13	5.68	0.00	0.000	0.000
12/31/2006	0.07	0.27	3.70		10.13	5.69	0.00	0.000	0.000
1/31/2007	0.07	0.28	3.83		10.14	5.70	0.00	0.000	0.000
2/28/2007	0.08	0.03	0.41		10.14	5.70	0.00	0.000	0.000
3/31/2007	0.08	0.03	0.35		10.14	5.70	0.00	0.000	0.000
4/30/2007	0.09	0.28	3.23		10.14	5.71	0.00	0.000	0.000
5/31/2007	0.09	0.29	3.18		10.15	5.72	0.00	0.000	0.000
6/30/2007	0.10	0.28	2.86		10.15	5.73	0.00	0.000	0.000
7/31/2007	0.10	0.29	2.87		10.15	5.74	0.00	0.000	0.000
8/31/2007	0.10	0.35	3.57		10.16	5.75	0.00	0.000	0.000
9/30/2007	0.09	0.41	4.59		10.16	5.76	0.00	0.000	0.000
10/31/2007	0.06	0.34	5.25		10.16	5.77	0.00	0.000	0.000
11/30/2007	0.07	0.17	2.55		10.16	5.77	0.00	0.000	0.000
12/31/2007	0.06	0.03	0.45		10.16	5.78	0.00	0.000	0.000
1/31/2008	0.07	0.53	7.76		10.17	5.79	0.00	0.000	0.000
2/29/2008	0.07	0.71	10.35		10.17	5.81	0.00	0.000	0.000
3/31/2008	0.06	0.70	10.85		10.17	5.83	0.00	0.000	0.000
4/30/2008	0.07	0.66	9.85		10.17	5.85	0.00	0.000	0.000
5/31/2008	0.07	0.67	9.90		10.17	5.87	0.00	0.000	0.000
6/30/2008	0.06	0.72	11.32		10.18	5.90	0.00	0.000	0.000
7/31/2008	0.07	0.71	10.48		10.18	5.92	0.00	0.000	0.000
8/31/2008	0.07	0.68	9.55		10.18	5.94	0.00	0.000	0.000
9/30/2008	0.06	0.66	10.42		10.18	5.96	0.00	0.000	0.000
10/31/2008	0.07	0.67	9.90		10.18	5.98	0.00	0.000	0.000
11/30/2008	0.07	0.61	9.10		10.19	6.00	0.00	0.000	0.000
12/31/2008	0.07	0.59	8.27		10.19	6.02	0.00	0.000	0.000

Date	Oil Rate (CD) m3/d	Water Rate (CD) m3/d	Water Oil Ratio m3/m3	Water Inj Rate (CD) m3/d	Cum Oil Prod Km3	Cum Water Prod Km3	Cum Water Inj Km3	VRR	Cum VRR
1/31/2009	0.07	0.61	8.59		10.19	6.03	0.00	0.000	0.000
2/28/2009	0.07	0.57	8.47		10.19	6.05	0.00	0.000	0.000
3/31/2009	0.13	0.56	4.38		10.20	6.07	0.00	0.000	0.000
4/30/2009	0.13	0.60	4.74		10.20	6.09	0.00	0.000	0.000
5/31/2009	0.13	0.59	4.72		10.20	6.10	0.00	0.000	0.000
6/30/2009	0.12	0.66	5.69		10.21	6.12	0.00	0.000	0.000
7/31/2009	0.13	0.90	6.95		10.21	6.15	0.00	0.000	0.000
8/31/2009	0.15	0.72	4.93		10.22	6.17	0.00	0.000	0.000
9/30/2009	0.14	0.72	5.00		10.22	6.20	0.00	0.000	0.000
10/31/2009	0.13	0.69	5.22		10.22	6.22	0.00	0.000	0.000
11/30/2009	0.12	0.63	5.22		10.23	6.24	0.00	0.000	0.000
12/31/2009	0.13	0.55	4.20		10.23	6.25	0.00	0.000	0.000
1/31/2010	0.13	0.56	4.33		10.24	6.27	0.00	0.000	0.000
2/28/2010	0.13	0.53	4.23		10.24	6.29	0.00	0.000	0.000
3/31/2010	0.15	0.48	3.17		10.24	6.30	0.00	0.000	0.000
4/30/2010	0.15	0.44	2.91		10.25	6.31	0.00	0.000	0.000
5/31/2010	0.09	0.04	0.48		10.25	6.32	0.00	0.000	0.000
6/30/2010	0.07	0.06	0.95		10.25	6.32	0.00	0.000	0.000
7/31/2010	0.08	0.07	0.88		10.26	6.32	0.00	0.000	0.000
8/31/2010	0.08	0.45	5.88		10.26	6.33	0.00	0.000	0.000
9/30/2010	0.13	0.47	3.68		10.26	6.35	0.00	0.000	0.000
10/31/2010	0.13	0.45	3.37		10.27	6.36	0.00	0.000	0.000
11/30/2010	0.14	0.43	3.17		10.27	6.37	0.00	0.000	0.000
12/31/2010	0.13	0.45	3.41		10.27	6.39	0.00	0.000	0.000
1/31/2011	0.12	0.44	3.70		10.28	6.40	0.00	0.000	0.000
2/28/2011	0.12	0.45	3.71		10.28	6.41	0.00	0.000	0.000
3/31/2011	0.12	0.42	3.51		10.29	6.43	0.00	0.000	0.000
4/30/2011	0.29	0.39	1.33		10.29	6.44	0.00	0.000	0.000
5/31/2011	0.28	0.39	1.40		10.30	6.45	0.00	0.000	0.000
6/30/2011	0.17	0.23	1.31		10.31	6.46	0.00	0.000	0.000
7/31/2011	0.38	0.05	0.12		10.32	6.46	0.00	0.000	0.000
8/31/2011	8.13	39.20	4.82		10.57	7.67	0.00	0.000	0.000
9/30/2011	9.76	40.34	4.13		10.86	8.88	0.00	0.000	0.000
10/31/2011	9.05	51.21	5.66		11.15	10.47	0.00	0.000	0.000
11/30/2011	9.29	51.96	5.59		11.42	12.03	0.00	0.000	0.000
12/31/2011	9.81	51.75	5.28		11.73	13.64	0.00	0.000	0.000
1/31/2012	12.66	46.01	3.63		12.12	15.06	0.00	0.000	0.000
2/29/2012	9.29	37.42	4.03		12.39	16.15	0.00	0.000	0.000
3/31/2012	9.12	36.81	4.04		12.67	17.29	0.00	0.000	0.000
4/30/2012	8.70	34.96	4.02		12.93	18.34	0.00	0.000	0.000
5/31/2012	6.97	31.46	4.52		13.15	19.31	0.00	0.000	0.000
6/30/2012	6.03	28.67	4.75		13.33	20.17	0.00	0.000	0.000
7/31/2012	4.20	21.36	5.09		13.46	20.83	0.00	0.000	0.000
8/31/2012	4.65	25.39	5.46		13.61	21.62	0.00	0.000	0.000
9/30/2012	4.72	27.69	5.87		13.75	22.45	0.00	0.000	0.000
10/31/2012	3.44	21.43	6.24		13.85	23.12	0.00	0.000	0.000

Date	Oil Rate (CD) m3/d	Water Rate (CD) m3/d	Water Oil Ratio m3/m3	Water Inj Rate (CD) m3/d	Cum Oil Prod Km3	Cum Water Prod Km3	Cum Water Inj Km3	VRR	Cum VRR
11/30/2012	3.31	21.45	6.49		13.95	23.76	0.00	0.000	0.000
12/31/2012	2.50	14.12	5.64		14.03	24.20	0.00	0.000	0.000
1/31/2013	2.03	10.80	5.32		14.09	24.53	0.00	0.000	0.000
2/28/2013	1.44	6.92	4.81		14.13	24.73	0.00	0.000	0.000
3/31/2013	1.90	12.41	6.54		14.19	25.11	0.00	0.000	0.000
4/30/2013	1.95	19.94	10.23		14.25	25.71	0.00	0.000	0.000
5/31/2013	2.53	12.93	5.12		14.33	26.11	0.00	0.000	0.000
6/30/2013	4.06	24.42	6.02		14.45	26.84	0.00	0.000	0.000
7/31/2013	4.96	26.04	5.25		14.60	27.65	0.00	0.000	0.000
8/31/2013	7.82	32.21	4.12		14.85	28.65	0.00	0.000	0.000
9/30/2013	7.99	34.84	4.36		15.09	29.69	0.00	0.000	0.000
10/31/2013	6.50	29.05	4.47		15.29	30.59	0.00	0.000	0.000
11/30/2013	5.21	24.63	4.73		15.44	31.33	0.00	0.000	0.000
12/31/2013	3.86	24.67	6.39		15.56	32.10	0.00	0.000	0.000
1/31/2014	4.93	24.14	4.89		15.72	32.85	0.00	0.000	0.000
2/28/2014	5.17	23.63	4.57		15.86	33.51	0.00	0.000	0.000
3/31/2014	5.05	23.57	4.66		16.02	34.24	0.00	0.000	0.000
4/30/2014	4.38	21.27	4.86		16.15	34.88	0.00	0.000	0.000
5/31/2014	3.94	20.31	5.15		16.27	35.51	0.00	0.000	0.000
6/30/2014	3.53	18.11	5.13		16.38	36.05	0.00	0.000	0.000
7/31/2014	3.07	16.96	5.52		16.47	36.57	0.00	0.000	0.000
8/31/2014	3.33	19.29	5.80		16.58	37.17	0.00	0.000	0.000
9/30/2014	2.21	21.78	9.85		16.64	37.83	0.00	0.000	0.000
10/31/2014	3.96	35.70	9.01		16.77	38.93	0.00	0.000	0.000
11/30/2014	5.07	38.97	7.68		16.92	40.10	0.00	0.000	0.000
12/31/2014	3.39	24.64	7.26		17.02	40.87	0.00	0.000	0.000
1/31/2015	5.27	39.56	7.51		17.19	42.09	0.00	0.000	0.000
2/28/2015	4.33	35.68	8.24		17.31	43.09	0.00	0.000	0.000
3/31/2015	3.79	35.23	9.30		17.42	44.18	0.00	0.000	0.000
4/30/2015	4.04	31.56	7.81		17.55	45.13	0.00	0.000	0.000
5/31/2015	4.53	30.83	6.80		17.69	46.09	0.00	0.000	0.000
6/30/2015	2.76	31.61	11.47		17.77	47.03	0.00	0.000	0.000
7/31/2015	1.42	13.96	9.84		17.81	47.47	0.00	0.000	0.000
8/31/2015	2.17	13.48	6.21	13.16	17.88	47.88	0.41	0.833	0.006
9/30/2015	2.31	14.18	6.15	19.50	17.95	48.31	0.99	1.172	0.015
10/31/2015	1.45	11.19	7.71	17.42	17.99	48.66	1.53	1.367	0.023
11/30/2015	1.86	15.98	8.62	19.40	18.05	49.14	2.12	1.080	0.031
12/31/2015	1.08	16.38	15.23	18.81	18.08	49.64	2.70	1.073	0.039
1/31/2016	1.20	14.79	12.29	19.06	18.12	50.10	3.29	1.186	0.047
2/29/2016	0.52	7.66	14.86	19.31	18.14	50.32	3.85	2.351	0.055
3/31/2016	0.54	7.67	14.29	18.68	18.15	50.56	4.43	2.264	0.063
4/30/2016	0.70	6.85	9.79	19.43	18.17	50.77	5.01	2.556	0.071
5/31/2016	0.96	6.12	6.38	19.52	18.20	50.96	5.62	2.731	0.080
6/30/2016	0.88	6.11	6.97	13.93	18.23	51.14	6.03	1.978	0.085
7/31/2016	0.96	7.18	7.47	6.26	18.26	51.36	6.23	0.762	0.088
8/31/2016	1.63	15.20	9.31	4.97	18.31	51.84	6.38	0.293	0.089

Date	Oil Rate (CD) m3/d	Water Rate (CD) m3/d	Water Oil Ratio m3/m3	Water Inj Rate (CD) m3/d	Cum Oil Prod Km3	Cum Water Prod Km3	Cum Water Inj Km3	VRR	Cum VRR
9/30/2016	1.55	15.54	9.99	4.27	18.36	52.30	6.51	0.248	0.091
10/31/2016	1.69	14.72	8.69	4.90	18.41	52.76	6.66	0.297	0.092
11/30/2016	1.78	14.24	8.00	5.47	18.46	53.18	6.83	0.339	0.094
12/31/2016	1.88	13.77	7.32	5.65	18.52	53.61	7.00	0.358	0.095
1/31/2017	1.95	13.29	6.80	6.45	18.58	54.02	7.20	0.420	0.097
2/28/2017	2.22	11.62	5.23	3.57	18.64	54.35	7.30	0.255	0.098
3/31/2017	2.29	11.25	4.91	1.61	18.71	54.70	7.35	0.118	0.098
4/30/2017	1.53	11.27	7.36	16.30	18.76	55.04	7.84	1.262	0.104
5/31/2017	1.25	11.95	9.58	24.32	18.80	55.41	8.59	1.832	0.114
6/30/2017	1.71	12.01	7.03	23.70	18.85	55.77	9.30	1.713	0.123
7/31/2017	2.32	10.55	4.55	38.58	18.92	56.09	10.50	2.960	0.138
8/31/2017	2.27	9.96	4.39	21.39	18.99	56.40	11.16	1.726	0.146
9/30/2017	2.16	10.13	4.68	23.17	19.06	56.71	11.86	1.862	0.154
10/31/2017	2.06	10.33	5.02	22.52	19.12	57.03	12.56	1.798	0.162
11/30/2017	2.28	9.12	4.00	20.37	19.19	57.30	13.17	1.763	0.169
12/31/2017	1.98	10.63	5.37	23.97	19.25	57.63	13.91	1.880	0.178

# Pattern: 00/16-29-010-28Inj Set: DalyUnit#8BKKN

Oil Formation Vol Factor : 1.07100 m3/m3

Water Formation Vol Factor : 1.00150 m3/m3

Water / Oil Ratio : 4.43 m3/m3

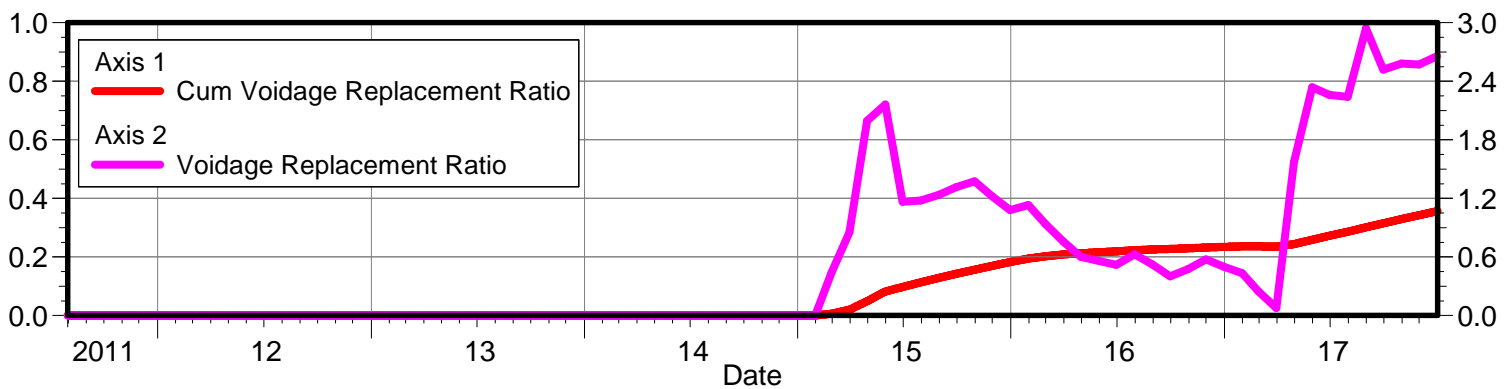
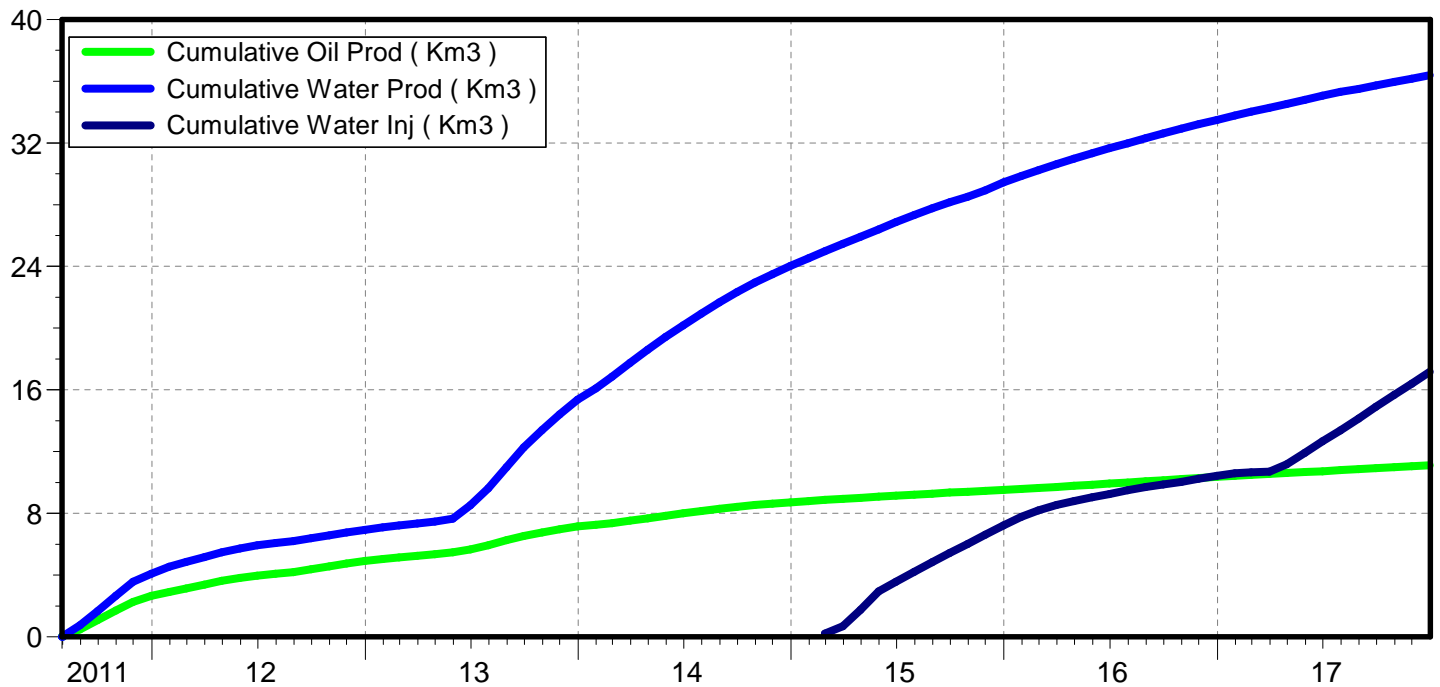
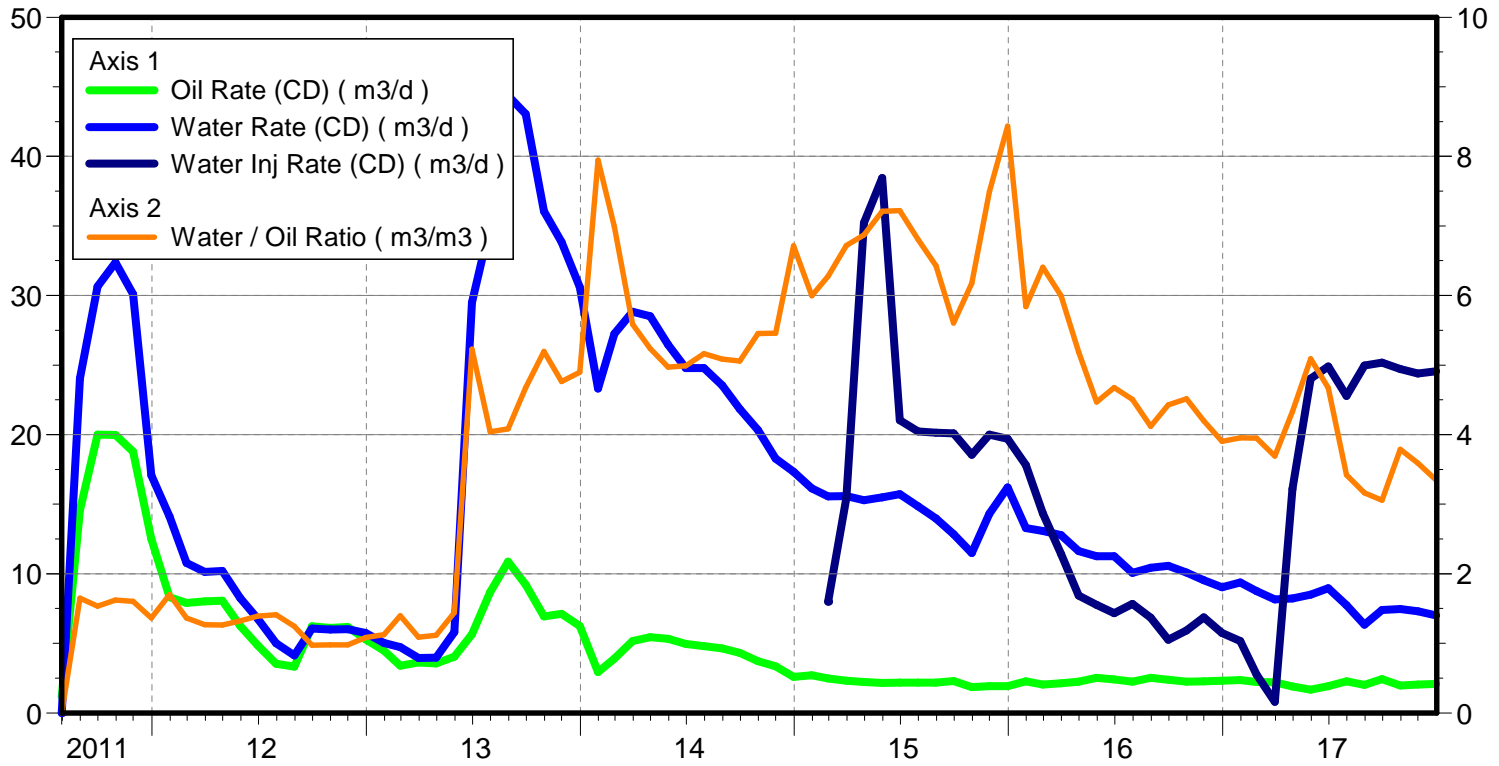
June 06, 2018

Operator: TUNDRA\_OIL\_AND\_GAS\_PARTNER

Oil Rate (CD) : 2.20 m3/d

Water Rate (CD) : 7.52 m3/d

Water Inj Rate (CD) : 24.64 m3/d





Date	Oil Rate (CD) m3/d	Water Rate (CD) m3/d	Water Oil Ratio m3/m3	Water Inj Rate (CD) m3/d	Cum Oil Prod Km3	Cum Water Prod Km3	Cum Water Inj Km3	VRR	Cum VRR
6/30/2011					0.00	0.00	0.00		
7/31/2011	1.19	0.00	0.00		0.04	0.00	0.00	0.000	0.000
8/31/2011	14.57	24.05	1.65		0.49	0.75	0.00	0.000	0.000
9/30/2011	19.99	30.65	1.53		1.09	1.66	0.00	0.000	0.000
10/31/2011	19.99	32.38	1.62		1.71	2.67	0.00	0.000	0.000
11/30/2011	18.78	30.11	1.60		2.27	3.57	0.00	0.000	0.000
12/31/2011	12.51	17.08	1.37		2.66	4.10	0.00	0.000	0.000
1/31/2012	8.31	14.12	1.70		2.92	4.54	0.00	0.000	0.000
2/29/2012	7.90	10.77	1.36		3.15	4.85	0.00	0.000	0.000
3/31/2012	8.01	10.14	1.27		3.39	5.17	0.00	0.000	0.000
4/30/2012	8.07	10.20	1.26		3.64	5.47	0.00	0.000	0.000
5/31/2012	6.24	8.25	1.32		3.83	5.73	0.00	0.000	0.000
6/30/2012	4.85	6.75	1.39		3.97	5.93	0.00	0.000	0.000
7/31/2012	3.54	5.00	1.41		4.08	6.08	0.00	0.000	0.000
8/31/2012	3.32	4.12	1.24		4.19	6.21	0.00	0.000	0.000
9/30/2012	6.22	6.07	0.98		4.37	6.39	0.00	0.000	0.000
10/31/2012	6.11	5.99	0.98		4.56	6.58	0.00	0.000	0.000
11/30/2012	6.17	6.02	0.98		4.75	6.76	0.00	0.000	0.000
12/31/2012	5.29	5.73	1.08		4.91	6.94	0.00	0.000	0.000
1/31/2013	4.48	5.03	1.12		5.05	7.09	0.00	0.000	0.000
2/28/2013	3.40	4.74	1.39		5.15	7.23	0.00	0.000	0.000
3/31/2013	3.62	3.95	1.09		5.26	7.35	0.00	0.000	0.000
4/30/2013	3.56	3.97	1.12		5.37	7.47	0.00	0.000	0.000
5/31/2013	4.03	5.82	1.44		5.49	7.65	0.00	0.000	0.000
6/30/2013	5.64	29.51	5.23		5.66	8.53	0.00	0.000	0.000
7/31/2013	8.69	35.09	4.04		5.93	9.62	0.00	0.000	0.000
8/31/2013	10.87	44.36	4.08		6.27	11.00	0.00	0.000	0.000
9/30/2013	9.21	43.05	4.68		6.54	12.29	0.00	0.000	0.000
10/31/2013	6.94	36.06	5.19		6.76	13.41	0.00	0.000	0.000
11/30/2013	7.11	33.85	4.76		6.97	14.42	0.00	0.000	0.000
12/31/2013	6.25	30.60	4.90		7.16	15.37	0.00	0.000	0.000
1/31/2014	2.94	23.32	7.95		7.25	16.09	0.00	0.000	0.000
2/28/2014	3.90	27.24	6.99		7.36	16.86	0.00	0.000	0.000
3/31/2014	5.16	28.82	5.59		7.52	17.75	0.00	0.000	0.000
4/30/2014	5.44	28.52	5.24		7.69	18.61	0.00	0.000	0.000
5/31/2014	5.32	26.45	4.97		7.85	19.43	0.00	0.000	0.000
6/30/2014	4.97	24.79	4.99		8.00	20.17	0.00	0.000	0.000
7/31/2014	4.80	24.79	5.16		8.15	20.94	0.00	0.000	0.000
8/31/2014	4.63	23.53	5.08		8.29	21.67	0.00	0.000	0.000
9/30/2014	4.32	21.84	5.06		8.42	22.32	0.00	0.000	0.000
10/31/2014	3.73	20.32	5.45		8.54	22.95	0.00	0.000	0.000
11/30/2014	3.35	18.27	5.46		8.64	23.50	0.00	0.000	0.000
12/31/2014	2.58	17.34	6.72		8.72	24.04	0.00	0.000	0.000
1/31/2015	2.69	16.15	5.99		8.80	24.54	0.00	0.000	0.000
2/28/2015	2.48	15.57	6.28	8.00	8.87	24.97	0.22	0.439	0.006
3/31/2015	2.32	15.59	6.72	15.45	8.94	25.46	0.70	0.855	0.020

Date	Oil Rate (CD) m3/d	Water Rate (CD) m3/d	Water Oil Ratio m3/m3	Water Inj Rate (CD) m3/d	Cum Oil Prod Km3	Cum Water Prod Km3	Cum Water Inj Km3	VRR	Cum VRR
4/30/2015	2.23	15.28	6.87	35.23	9.01	25.92	1.76	1.995	0.050
5/31/2015	2.15	15.49	7.21	38.45	9.08	26.40	2.95	2.162	0.082
6/30/2015	2.18	15.72	7.22	21.03	9.14	26.87	3.58	1.165	0.098
7/31/2015	2.18	14.84	6.80	20.23	9.21	27.33	4.21	1.178	0.113
8/31/2015	2.17	13.97	6.43	20.13	9.28	27.76	4.83	1.236	0.128
9/30/2015	2.29	12.84	5.61	20.10	9.35	28.15	5.44	1.315	0.143
10/31/2015	1.86	11.49	6.18	18.55	9.40	28.50	6.01	1.376	0.156
11/30/2015	1.91	14.32	7.49	20.00	9.46	28.93	6.61	1.222	0.169
12/31/2015	1.92	16.21	8.43	19.71	9.52	29.43	7.22	1.079	0.182
1/31/2016	2.27	13.28	5.84	17.81	9.59	29.85	7.78	1.133	0.194
2/29/2016	2.04	13.09	6.41	14.34	9.65	30.23	8.19	0.939	0.202
3/31/2016	2.13	12.79	6.00	11.42	9.72	30.62	8.54	0.758	0.208
4/30/2016	2.24	11.63	5.19	8.43	9.78	30.97	8.80	0.601	0.212
5/31/2016	2.52	11.26	4.47	7.77	9.86	31.32	9.04	0.557	0.216
6/30/2016	2.41	11.26	4.68	7.17	9.93	31.66	9.25	0.518	0.219
7/31/2016	2.24	10.07	4.51	7.84	10.00	31.97	9.50	0.629	0.223
8/31/2016	2.53	10.42	4.12	6.84	10.08	32.29	9.71	0.521	0.225
9/30/2016	2.39	10.57	4.43	5.27	10.15	32.61	9.87	0.401	0.227
10/31/2016	2.24	10.09	4.51	5.94	10.22	32.92	10.05	0.476	0.229
11/30/2016	2.27	9.54	4.20	6.87	10.29	33.21	10.26	0.573	0.232
12/31/2016	2.31	9.03	3.90	5.74	10.36	33.49	10.44	0.499	0.234
1/31/2017	2.37	9.37	3.96	5.16	10.44	33.78	10.60	0.433	0.236
2/28/2017	2.21	8.75	3.95	2.75	10.50	34.02	10.67	0.247	0.236
3/31/2017	2.21	8.16	3.69	0.81	10.57	34.28	10.70	0.077	0.235
4/30/2017	1.90	8.21	4.33	16.10	10.62	34.52	11.18	1.572	0.244
5/31/2017	1.67	8.49	5.09	24.03	10.68	34.79	11.93	2.338	0.258
6/30/2017	1.92	8.96	4.67	24.90	10.73	35.06	12.67	2.261	0.272
7/31/2017	2.26	7.74	3.42	22.77	10.80	35.30	13.38	2.240	0.286
8/31/2017	2.00	6.35	3.16	24.97	10.87	35.49	14.15	2.941	0.300
9/30/2017	2.42	7.41	3.06	25.17	10.94	35.72	14.91	2.518	0.314
10/31/2017	1.97	7.46	3.79	24.71	11.00	35.95	15.67	2.581	0.329
11/30/2017	2.04	7.31	3.59	24.40	11.06	36.17	16.41	2.571	0.342
12/31/2017	2.09	7.00	3.35	24.55	11.13	36.38	17.17	2.656	0.356

# Pattern: 00/01-32-010-28Inj Set: DalyUnit#8BKKN

Oil Formation Vol Factor : 1.07100 m3/m3

Water Formation Vol Factor : 1.00150 m3/m3

Water / Oil Ratio : 3.43 m3/m3

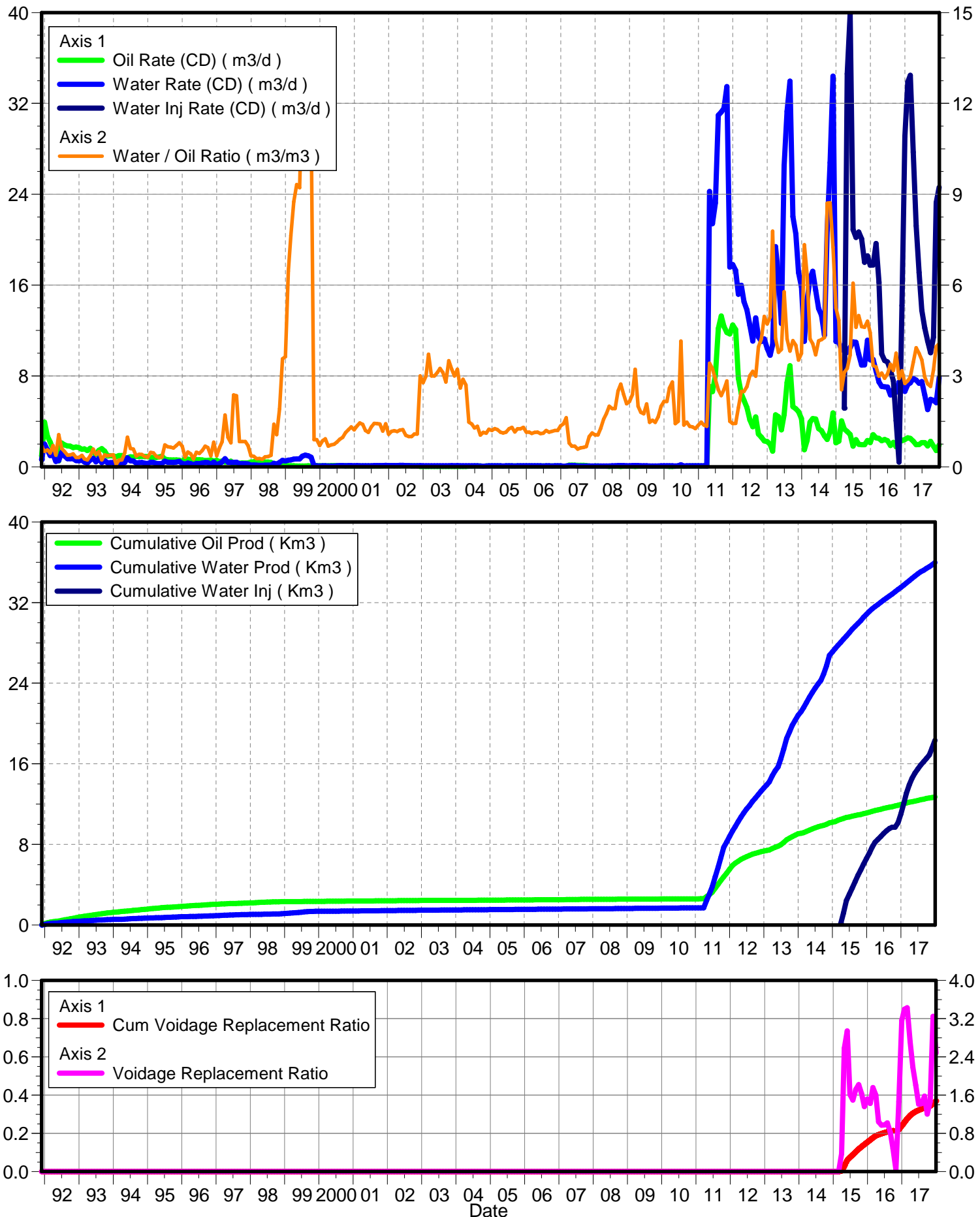
June 06, 2018

Operator: TUNDRA\_OIL\_AND\_GAS\_PARTNER

Oil Rate (CD) : 2.13 m3/d

Water Rate (CD) : 8.90 m3/d

Water Inj Rate (CD) : 24.21 m3/d



Date	Oil Rate (CD) m3/d	Water Rate (CD) m3/d	Water Oil Ratio m3/m3	Water Inj Rate (CD) m3/d	Cum Oil Prod Km3	Cum Water Prod Km3	Cum Water Inj Km3	VRR	Cum VRR
10/31/1991					0.00	0.00	0.00		
11/30/1991	0.96	0.64	0.67		0.03	0.02	0.00	0.000	0.000
12/31/1991	3.93	2.00	0.51		0.15	0.08	0.00	0.000	0.000
1/31/1992	2.67	1.48	0.55		0.23	0.13	0.00	0.000	0.000
2/29/1992	2.18	0.99	0.45		0.30	0.16	0.00	0.000	0.000
3/31/1992	1.54	1.07	0.70		0.34	0.19	0.00	0.000	0.000
4/30/1992	1.22	0.47	0.38		0.38	0.20	0.00	0.000	0.000
5/31/1992	0.51	0.55	1.06		0.40	0.22	0.00	0.000	0.000
6/30/1992	2.08	1.25	0.60		0.46	0.26	0.00	0.000	0.000
7/31/1992	1.92	0.95	0.50		0.52	0.29	0.00	0.000	0.000
8/31/1992	1.83	0.70	0.38		0.58	0.31	0.00	0.000	0.000
9/30/1992	1.81	0.71	0.39		0.63	0.33	0.00	0.000	0.000
10/31/1992	1.68	0.71	0.42		0.68	0.35	0.00	0.000	0.000
11/30/1992	1.74	0.54	0.31		0.73	0.37	0.00	0.000	0.000
12/31/1992	1.69	0.52	0.31		0.79	0.38	0.00	0.000	0.000
1/31/1993	1.53	0.58	0.38		0.83	0.40	0.00	0.000	0.000
2/28/1993	1.58	0.41	0.26		0.88	0.41	0.00	0.000	0.000
3/31/1993	1.43	0.33	0.23		0.92	0.42	0.00	0.000	0.000
4/30/1993	1.63	0.59	0.36		0.97	0.44	0.00	0.000	0.000
5/31/1993	1.29	0.75	0.59		1.01	0.47	0.00	0.000	0.000
6/30/1993	1.08	0.44	0.41		1.04	0.48	0.00	0.000	0.000
7/31/1993	1.45	0.73	0.50		1.09	0.50	0.00	0.000	0.000
8/31/1993	1.59	0.36	0.23		1.14	0.51	0.00	0.000	0.000
9/30/1993	1.38	0.54	0.39		1.18	0.53	0.00	0.000	0.000
10/31/1993	0.95	0.35	0.36		1.21	0.54	0.00	0.000	0.000
11/30/1993	0.97	0.37	0.38		1.24	0.55	0.00	0.000	0.000
12/31/1993	0.95	0.38	0.40		1.27	0.56	0.00	0.000	0.000
1/31/1994	0.88	0.06	0.07		1.29	0.56	0.00	0.000	0.000
2/28/1994	0.99	0.21	0.22		1.32	0.57	0.00	0.000	0.000
3/31/1994	0.98	0.22	0.23		1.35	0.58	0.00	0.000	0.000
4/30/1994	0.81	0.37	0.46		1.38	0.59	0.00	0.000	0.000
5/31/1994	0.79	0.78	0.98		1.40	0.61	0.00	0.000	0.000
6/30/1994	0.87	0.53	0.60		1.43	0.63	0.00	0.000	0.000
7/31/1994	0.86	0.50	0.58		1.45	0.64	0.00	0.000	0.000
8/31/1994	0.94	0.33	0.36		1.48	0.65	0.00	0.000	0.000
9/30/1994	0.90	0.37	0.41		1.51	0.66	0.00	0.000	0.000
10/31/1994	0.92	0.37	0.40		1.54	0.68	0.00	0.000	0.000
11/30/1994	0.90	0.30	0.34		1.57	0.69	0.00	0.000	0.000
12/31/1994	0.90	0.28	0.31		1.59	0.69	0.00	0.000	0.000
1/31/1995	0.82	0.39	0.48		1.62	0.71	0.00	0.000	0.000
2/28/1995	0.82	0.38	0.46		1.64	0.72	0.00	0.000	0.000
3/31/1995	0.83	0.28	0.34		1.67	0.73	0.00	0.000	0.000
4/30/1995	0.86	0.26	0.31		1.69	0.73	0.00	0.000	0.000
5/31/1995	0.92	0.29	0.32		1.72	0.74	0.00	0.000	0.000
6/30/1995	0.67	0.48	0.72		1.74	0.76	0.00	0.000	0.000
7/31/1995	0.61	0.40	0.66		1.76	0.77	0.00	0.000	0.000

Date	Oil Rate (CD) m3/d	Water Rate (CD) m3/d	Water Oil Ratio m3/m3	Water Inj Rate (CD) m3/d	Cum Oil Prod Km3	Cum Water Prod Km3	Cum Water Inj Km3	VRR	Cum VRR
8/31/1995	0.60	0.39	0.65		1.78	0.78	0.00	0.000	0.000
9/30/1995	0.60	0.37	0.62		1.80	0.79	0.00	0.000	0.000
10/31/1995	0.59	0.41	0.70		1.82	0.81	0.00	0.000	0.000
11/30/1995	0.59	0.46	0.79		1.83	0.82	0.00	0.000	0.000
12/31/1995	0.43	0.29	0.68		1.85	0.83	0.00	0.000	0.000
1/31/1996	0.74	0.23	0.31		1.87	0.84	0.00	0.000	0.000
2/29/1996	0.66	0.32	0.49		1.89	0.84	0.00	0.000	0.000
3/31/1996	0.64	0.27	0.43		1.91	0.85	0.00	0.000	0.000
4/30/1996	0.66	0.17	0.26		1.93	0.86	0.00	0.000	0.000
5/31/1996	0.61	0.29	0.48		1.95	0.87	0.00	0.000	0.000
6/30/1996	0.62	0.27	0.44		1.97	0.88	0.00	0.000	0.000
7/31/1996	0.60	0.32	0.53		1.99	0.89	0.00	0.000	0.000
8/31/1996	0.55	0.37	0.68		2.00	0.90	0.00	0.000	0.000
9/30/1996	0.57	0.36	0.64		2.02	0.91	0.00	0.000	0.000
10/31/1996	0.61	0.22	0.36		2.04	0.91	0.00	0.000	0.000
11/30/1996	0.51	0.41	0.81		2.05	0.93	0.00	0.000	0.000
12/31/1996	0.56	0.20	0.36		2.07	0.93	0.00	0.000	0.000
1/31/1997	0.45	0.28	0.64		2.08	0.94	0.00	0.000	0.000
2/28/1997	0.50	0.41	0.82		2.10	0.95	0.00	0.000	0.000
3/31/1997	0.41	0.71	1.71		2.11	0.98	0.00	0.000	0.000
4/30/1997	0.41	0.39	0.97		2.12	0.99	0.00	0.000	0.000
5/31/1997	0.49	0.39	0.79		2.14	1.00	0.00	0.000	0.000
6/30/1997	0.16	0.39	2.37		2.14	1.01	0.00	0.000	0.000
7/31/1997	0.17	0.39	2.35		2.15	1.02	0.00	0.000	0.000
8/31/1997	0.31	0.26	0.84		2.16	1.03	0.00	0.000	0.000
9/30/1997	0.33	0.28	0.83		2.17	1.04	0.00	0.000	0.000
10/31/1997	0.33	0.27	0.83		2.18	1.05	0.00	0.000	0.000
11/30/1997	0.35	0.24	0.70		2.19	1.06	0.00	0.000	0.000
12/31/1997	0.41	0.15	0.36		2.20	1.06	0.00	0.000	0.000
1/31/1998	0.44	0.15	0.34		2.22	1.06	0.00	0.000	0.000
2/28/1998	0.55	0.15	0.27		2.23	1.07	0.00	0.000	0.000
3/31/1998	0.47	0.13	0.27		2.25	1.07	0.00	0.000	0.000
4/30/1998	0.46	0.11	0.25		2.26	1.08	0.00	0.000	0.000
5/31/1998	0.42	0.14	0.33		2.27	1.08	0.00	0.000	0.000
6/30/1998	0.42	0.14	0.34		2.29	1.08	0.00	0.000	0.000
7/31/1998	0.39	0.15	0.38		2.30	1.09	0.00	0.000	0.000
8/31/1998	0.22	0.31	1.41		2.30	1.10	0.00	0.000	0.000
9/30/1998	0.22	0.24	1.06		2.31	1.11	0.00	0.000	0.000
10/31/1998	0.20	0.38	1.92		2.32	1.12	0.00	0.000	0.000
11/30/1998	0.16	0.57	3.56		2.32	1.13	0.00	0.000	0.000
12/31/1998	0.14	0.52	3.64		2.33	1.15	0.00	0.000	0.000
1/31/1999	0.09	0.58	6.46		2.33	1.17	0.00	0.000	0.000
2/28/1999	0.08	0.60	7.64		2.33	1.19	0.00	0.000	0.000
3/31/1999	0.08	0.68	8.75		2.33	1.21	0.00	0.000	0.000
4/30/1999	0.07	0.68	9.32		2.34	1.23	0.00	0.000	0.000
5/31/1999	0.07	0.68	9.22		2.34	1.25	0.00	0.000	0.000

Date	Oil Rate (CD) m3/d	Water Rate (CD) m3/d	Water Oil Ratio m3/m3	Water Inj Rate (CD) m3/d	Cum Oil Prod Km3	Cum Water Prod Km3	Cum Water Inj Km3	VRR	Cum VRR
6/30/1999	0.07	0.93	12.68		2.34	1.28	0.00	0.000	0.000
7/31/1999	0.07	1.02	14.41		2.34	1.31	0.00	0.000	0.000
8/31/1999	0.08	0.97	12.58		2.34	1.34	0.00	0.000	0.000
9/30/1999	0.07	0.85	11.55		2.35	1.36	0.00	0.000	0.000
10/31/1999	0.09	0.08	0.90		2.35	1.37	0.00	0.000	0.000
11/30/1999	0.10	0.09	0.90		2.35	1.37	0.00	0.000	0.000
12/31/1999	0.09	0.06	0.70		2.36	1.37	0.00	0.000	0.000
1/31/2000	0.09	0.08	0.86		2.36	1.37	0.00	0.000	0.000
2/29/2000	0.09	0.08	0.92		2.36	1.38	0.00	0.000	0.000
3/31/2000	0.09	0.06	0.68		2.36	1.38	0.00	0.000	0.000
4/30/2000	0.10	0.07	0.72		2.37	1.38	0.00	0.000	0.000
5/31/2000	0.10	0.07	0.74		2.37	1.38	0.00	0.000	0.000
6/30/2000	0.11	0.09	0.81		2.37	1.38	0.00	0.000	0.000
7/31/2000	0.10	0.09	0.91		2.38	1.39	0.00	0.000	0.000
8/31/2000	0.10	0.10	0.97		2.38	1.39	0.00	0.000	0.000
9/30/2000	0.08	0.09	1.13		2.38	1.39	0.00	0.000	0.000
10/31/2000	0.09	0.11	1.22		2.38	1.40	0.00	0.000	0.000
11/30/2000	0.07	0.10	1.32		2.39	1.40	0.00	0.000	0.000
12/31/2000	0.07	0.09	1.22		2.39	1.40	0.00	0.000	0.000
1/31/2001	0.07	0.10	1.35		2.39	1.41	0.00	0.000	0.000
2/28/2001	0.06	0.09	1.44		2.39	1.41	0.00	0.000	0.000
3/31/2001	0.06	0.09	1.40		2.39	1.41	0.00	0.000	0.000
4/30/2001	0.07	0.08	1.20		2.40	1.41	0.00	0.000	0.000
5/31/2001	0.07	0.08	1.14		2.40	1.42	0.00	0.000	0.000
6/30/2001	0.06	0.08	1.32		2.40	1.42	0.00	0.000	0.000
7/31/2001	0.07	0.11	1.43		2.40	1.42	0.00	0.000	0.000
8/31/2001	0.07	0.10	1.43		2.41	1.42	0.00	0.000	0.000
9/30/2001	0.07	0.10	1.41		2.41	1.43	0.00	0.000	0.000
10/31/2001	0.09	0.11	1.18		2.41	1.43	0.00	0.000	0.000
11/30/2001	0.08	0.11	1.42		2.41	1.43	0.00	0.000	0.000
12/31/2001	0.09	0.10	1.07		2.42	1.44	0.00	0.000	0.000
1/31/2002	0.09	0.11	1.17		2.42	1.44	0.00	0.000	0.000
2/28/2002	0.09	0.11	1.19		2.42	1.44	0.00	0.000	0.000
3/31/2002	0.08	0.09	1.16		2.42	1.45	0.00	0.000	0.000
4/30/2002	0.09	0.11	1.21		2.43	1.45	0.00	0.000	0.000
5/31/2002	0.10	0.12	1.23		2.43	1.45	0.00	0.000	0.000
6/30/2002	0.09	0.10	1.04		2.43	1.46	0.00	0.000	0.000
7/31/2002	0.10	0.10	1.00		2.44	1.46	0.00	0.000	0.000
8/31/2002	0.09	0.09	1.00		2.44	1.46	0.00	0.000	0.000
9/30/2002	0.09	0.09	1.08		2.44	1.47	0.00	0.000	0.000
10/31/2002	0.08	0.09	1.08		2.44	1.47	0.00	0.000	0.000
11/30/2002	0.03	0.10	3.00		2.44	1.47	0.00	0.000	0.000
12/31/2002	0.03	0.08	2.78		2.44	1.47	0.00	0.000	0.000
1/31/2003	0.03	0.09	3.00		2.45	1.48	0.00	0.000	0.000
2/28/2003	0.03	0.09	3.71		2.45	1.48	0.00	0.000	0.000
3/31/2003	0.03	0.08	3.00		2.45	1.48	0.00	0.000	0.000

Date	Oil Rate (CD) m3/d	Water Rate (CD) m3/d	Water Oil Ratio m3/m3	Water Inj Rate (CD) m3/d	Cum Oil Prod Km3	Cum Water Prod Km3	Cum Water Inj Km3	VRR	Cum VRR
4/30/2003	0.03	0.08	3.00		2.45	1.48	0.00	0.000	0.000
5/31/2003	0.03	0.09	3.11		2.45	1.49	0.00	0.000	0.000
6/30/2003	0.03	0.09	3.25		2.45	1.49	0.00	0.000	0.000
7/31/2003	0.03	0.09	3.11		2.45	1.49	0.00	0.000	0.000
8/31/2003	0.03	0.09	2.80		2.45	1.49	0.00	0.000	0.000
9/30/2003	0.03	0.09	3.50		2.45	1.50	0.00	0.000	0.000
10/31/2003	0.03	0.09	3.22		2.45	1.50	0.00	0.000	0.000
11/30/2003	0.03	0.09	3.00		2.45	1.50	0.00	0.000	0.000
12/31/2003	0.03	0.09	3.22		2.46	1.51	0.00	0.000	0.000
1/31/2004	0.03	0.08	2.60		2.46	1.51	0.00	0.000	0.000
2/29/2004	0.03	0.09	2.89		2.46	1.51	0.00	0.000	0.000
3/31/2004	0.03	0.09	2.70		2.46	1.51	0.00	0.000	0.000
4/30/2004	0.06	0.08	1.47		2.46	1.52	0.00	0.000	0.000
5/31/2004	0.05	0.08	1.41		2.46	1.52	0.00	0.000	0.000
6/30/2004	0.06	0.08	1.28		2.46	1.52	0.00	0.000	0.000
7/31/2004	0.06	0.08	1.33		2.47	1.52	0.00	0.000	0.000
8/31/2004	0.07	0.07	1.05		2.47	1.53	0.00	0.000	0.000
9/30/2004	0.05	0.06	1.13		2.47	1.53	0.00	0.000	0.000
10/31/2004	0.06	0.06	1.11		2.47	1.53	0.00	0.000	0.000
11/30/2004	0.07	0.09	1.24		2.47	1.53	0.00	0.000	0.000
12/31/2004	0.06	0.08	1.20		2.47	1.53	0.00	0.000	0.000
1/31/2005	0.06	0.08	1.26		2.48	1.54	0.00	0.000	0.000
2/28/2005	0.06	0.08	1.22		2.48	1.54	0.00	0.000	0.000
3/31/2005	0.07	0.08	1.14		2.48	1.54	0.00	0.000	0.000
4/30/2005	0.06	0.06	1.12		2.48	1.54	0.00	0.000	0.000
5/31/2005	0.07	0.08	1.14		2.48	1.55	0.00	0.000	0.000
6/30/2005	0.07	0.08	1.25		2.49	1.55	0.00	0.000	0.000
7/31/2005	0.06	0.08	1.30		2.49	1.55	0.00	0.000	0.000
8/31/2005	0.06	0.07	1.15		2.49	1.55	0.00	0.000	0.000
9/30/2005	0.07	0.08	1.25		2.49	1.56	0.00	0.000	0.000
10/31/2005	0.06	0.08	1.25		2.49	1.56	0.00	0.000	0.000
11/30/2005	0.07	0.09	1.30		2.50	1.56	0.00	0.000	0.000
12/31/2005	0.07	0.08	1.14		2.50	1.56	0.00	0.000	0.000
1/31/2006	0.07	0.08	1.14		2.50	1.57	0.00	0.000	0.000
2/28/2006	0.07	0.08	1.10		2.50	1.57	0.00	0.000	0.000
3/31/2006	0.07	0.08	1.14		2.50	1.57	0.00	0.000	0.000
4/30/2006	0.07	0.08	1.14		2.51	1.57	0.00	0.000	0.000
5/31/2006	0.07	0.08	1.09		2.51	1.57	0.00	0.000	0.000
6/30/2006	0.06	0.07	1.11		2.51	1.58	0.00	0.000	0.000
7/31/2006	0.06	0.08	1.20		2.51	1.58	0.00	0.000	0.000
8/31/2006	0.07	0.08	1.14		2.52	1.58	0.00	0.000	0.000
9/30/2006	0.06	0.07	1.17		2.52	1.58	0.00	0.000	0.000
10/31/2006	0.06	0.08	1.20		2.52	1.59	0.00	0.000	0.000
11/30/2006	0.07	0.08	1.20		2.52	1.59	0.00	0.000	0.000
12/31/2006	0.06	0.09	1.35		2.52	1.59	0.00	0.000	0.000
1/31/2007	0.04	0.05	1.42		2.52	1.59	0.00	0.000	0.000

Date	Oil Rate (CD) m3/d	Water Rate (CD) m3/d	Water Oil Ratio m3/m3	Water Inj Rate (CD) m3/d	Cum Oil Prod Km3	Cum Water Prod Km3	Cum Water Inj Km3	VRR	Cum VRR
2/28/2007	0.05	0.07	1.62		2.53	1.60	0.00	0.000	0.000
3/31/2007	0.13	0.10	0.78		2.53	1.60	0.00	0.000	0.000
4/30/2007	0.15	0.10	0.68		2.53	1.60	0.00	0.000	0.000
5/31/2007	0.14	0.10	0.68		2.54	1.60	0.00	0.000	0.000
6/30/2007	0.12	0.07	0.58		2.54	1.61	0.00	0.000	0.000
7/31/2007	0.12	0.07	0.62		2.55	1.61	0.00	0.000	0.000
8/31/2007	0.12	0.07	0.64		2.55	1.61	0.00	0.000	0.000
9/30/2007	0.11	0.07	0.67		2.55	1.61	0.00	0.000	0.000
10/31/2007	0.06	0.06	1.00		2.55	1.61	0.00	0.000	0.000
11/30/2007	0.06	0.06	1.12		2.56	1.62	0.00	0.000	0.000
12/31/2007	0.06	0.06	1.06		2.56	1.62	0.00	0.000	0.000
1/31/2008	0.06	0.06	1.06		2.56	1.62	0.00	0.000	0.000
2/29/2008	0.05	0.07	1.27		2.56	1.62	0.00	0.000	0.000
3/31/2008	0.05	0.07	1.57		2.56	1.62	0.00	0.000	0.000
4/30/2008	0.04	0.07	1.75		2.56	1.63	0.00	0.000	0.000
5/31/2008	0.04	0.07	2.00		2.56	1.63	0.00	0.000	0.000
6/30/2008	0.04	0.08	1.92		2.57	1.63	0.00	0.000	0.000
7/31/2008	0.04	0.08	1.92		2.57	1.63	0.00	0.000	0.000
8/31/2008	0.04	0.10	2.50		2.57	1.64	0.00	0.000	0.000
9/30/2008	0.04	0.10	2.73		2.57	1.64	0.00	0.000	0.000
10/31/2008	0.04	0.10	2.38		2.57	1.64	0.00	0.000	0.000
11/30/2008	0.04	0.08	2.08		2.57	1.65	0.00	0.000	0.000
12/31/2008	0.04	0.09	2.15		2.57	1.65	0.00	0.000	0.000
1/31/2009	0.04	0.10	2.38		2.57	1.65	0.00	0.000	0.000
2/28/2009	0.03	0.10	3.22		2.58	1.65	0.00	0.000	0.000
3/31/2009	0.05	0.10	2.00		2.58	1.66	0.00	0.000	0.000
4/30/2009	0.05	0.09	1.80		2.58	1.66	0.00	0.000	0.000
5/31/2009	0.05	0.09	1.75		2.58	1.66	0.00	0.000	0.000
6/30/2009	0.04	0.09	2.08		2.58	1.67	0.00	0.000	0.000
7/31/2009	0.05	0.07	1.47		2.58	1.67	0.00	0.000	0.000
8/31/2009	0.05	0.07	1.53		2.58	1.67	0.00	0.000	0.000
9/30/2009	0.05	0.07	1.47		2.59	1.67	0.00	0.000	0.000
10/31/2009	0.05	0.07	1.64		2.59	1.67	0.00	0.000	0.000
11/30/2009	0.04	0.08	2.00		2.59	1.68	0.00	0.000	0.000
12/31/2009	0.04	0.09	2.15		2.59	1.68	0.00	0.000	0.000
1/31/2010	0.04	0.09	2.15		2.59	1.68	0.00	0.000	0.000
2/28/2010	0.04	0.09	2.60		2.59	1.69	0.00	0.000	0.000
3/31/2010	0.03	0.09	2.80		2.59	1.69	0.00	0.000	0.000
4/30/2010	0.05	0.07	1.43		2.59	1.69	0.00	0.000	0.000
5/31/2010	0.06	0.09	1.50		2.60	1.69	0.00	0.000	0.000
6/30/2010	0.04	0.18	4.15		2.60	1.70	0.00	0.000	0.000
7/31/2010	0.05	0.07	1.38		2.60	1.70	0.00	0.000	0.000
8/31/2010	0.05	0.08	1.47		2.60	1.70	0.00	0.000	0.000
9/30/2010	0.06	0.08	1.33		2.60	1.71	0.00	0.000	0.000
10/31/2010	0.06	0.08	1.32		2.60	1.71	0.00	0.000	0.000
11/30/2010	0.06	0.08	1.26		2.61	1.71	0.00	0.000	0.000



Date	Oil Rate (CD) m3/d	Water Rate (CD) m3/d	Water Oil Ratio m3/m3	Water Inj Rate (CD) m3/d	Cum Oil Prod Km3	Cum Water Prod Km3	Cum Water Inj Km3	VRR	Cum VRR
12/31/2010	0.06	0.08	1.37		2.61	1.71	0.00	0.000	0.000
1/31/2011	0.05	0.08	1.47		2.61	1.72	0.00	0.000	0.000
2/28/2011	0.06	0.08	1.38		2.61	1.72	0.00	0.000	0.000
3/31/2011	0.04	0.05	1.33		2.61	1.72	0.00	0.000	0.000
4/30/2011	7.08	24.23	3.42		2.83	2.45	0.00	0.000	0.000
5/31/2011	6.61	21.40	3.24		3.03	3.11	0.00	0.000	0.000
6/30/2011	8.04	23.24	2.89		3.27	3.81	0.00	0.000	0.000
7/31/2011	12.16	30.95	2.54		3.65	4.77	0.00	0.000	0.000
8/31/2011	13.28	31.24	2.35		4.06	5.73	0.00	0.000	0.000
9/30/2011	12.36	31.56	2.55		4.43	6.68	0.00	0.000	0.000
10/31/2011	11.82	33.47	2.83		4.80	7.72	0.00	0.000	0.000
11/30/2011	11.70	17.58	1.50		5.15	8.25	0.00	0.000	0.000
12/31/2011	12.48	17.80	1.43		5.54	8.80	0.00	0.000	0.000
1/31/2012	12.09	17.28	1.43		5.91	9.33	0.00	0.000	0.000
2/29/2012	7.79	15.18	1.95		6.14	9.77	0.00	0.000	0.000
3/31/2012	6.43	15.98	2.49		6.34	10.27	0.00	0.000	0.000
4/30/2012	5.84	14.52	2.49		6.51	10.71	0.00	0.000	0.000
5/31/2012	5.21	13.81	2.65		6.67	11.13	0.00	0.000	0.000
6/30/2012	4.14	12.45	3.01		6.80	11.51	0.00	0.000	0.000
7/31/2012	3.52	11.07	3.15		6.91	11.85	0.00	0.000	0.000
8/31/2012	4.38	13.12	2.99		7.04	12.26	0.00	0.000	0.000
9/30/2012	2.89	11.44	3.96		7.13	12.60	0.00	0.000	0.000
10/31/2012	2.61	11.03	4.22		7.21	12.94	0.00	0.000	0.000
11/30/2012	2.27	11.25	4.96		7.28	13.28	0.00	0.000	0.000
12/31/2012	2.21	10.43	4.72		7.35	13.60	0.00	0.000	0.000
1/31/2013	1.98	9.81	4.94		7.41	13.91	0.00	0.000	0.000
2/28/2013	1.38	10.73	7.78		7.45	14.21	0.00	0.000	0.000
3/31/2013	4.57	19.38	4.24		7.59	14.81	0.00	0.000	0.000
4/30/2013	4.41	16.66	3.78		7.72	15.31	0.00	0.000	0.000
5/31/2013	3.25	12.62	3.88		7.82	15.70	0.00	0.000	0.000
6/30/2013	4.59	26.51	5.78		7.96	16.49	0.00	0.000	0.000
7/31/2013	7.41	31.29	4.22		8.19	17.46	0.00	0.000	0.000
8/31/2013	8.90	33.95	3.82		8.46	18.52	0.00	0.000	0.000
9/30/2013	5.29	22.03	4.17		8.62	19.18	0.00	0.000	0.000
10/31/2013	5.11	20.51	4.01		8.78	19.81	0.00	0.000	0.000
11/30/2013	4.86	17.10	3.52		8.93	20.33	0.00	0.000	0.000
12/31/2013	4.24	15.84	3.74		9.06	20.82	0.00	0.000	0.000
1/31/2014	1.51	11.06	7.33		9.10	21.16	0.00	0.000	0.000
2/28/2014	2.32	14.68	6.33		9.17	21.57	0.00	0.000	0.000
3/31/2014	3.93	16.59	4.22		9.29	22.09	0.00	0.000	0.000
4/30/2014	4.24	17.21	4.06		9.42	22.60	0.00	0.000	0.000
5/31/2014	4.21	15.55	3.69		9.55	23.08	0.00	0.000	0.000
6/30/2014	3.35	13.94	4.16		9.65	23.50	0.00	0.000	0.000
7/31/2014	3.18	13.34	4.20		9.75	23.92	0.00	0.000	0.000
8/31/2014	2.71	11.58	4.27		9.83	24.27	0.00	0.000	0.000
9/30/2014	2.40	20.85	8.70		9.90	24.90	0.00	0.000	0.000

Date	Oil Rate (CD) m3/d	Water Rate (CD) m3/d	Water Oil Ratio m3/m3	Water Inj Rate (CD) m3/d	Cum Oil Prod Km3	Cum Water Prod Km3	Cum Water Inj Km3	VRR	Cum VRR
10/31/2014	3.07	26.78	8.72		10.00	25.73	0.00	0.000	0.000
11/30/2014	4.75	34.39	7.25		10.14	26.76	0.00	0.000	0.000
12/31/2014	2.11	11.03	5.24		10.21	27.10	0.00	0.000	0.000
1/31/2015	2.26	10.96	4.84		10.28	27.44	0.00	0.000	0.000
2/28/2015	4.05	10.28	2.54		10.39	27.73	0.00	0.000	0.000
3/31/2015	3.32	10.34	3.11	5.16	10.49	28.05	0.16	0.372	0.004
4/30/2015	3.11	10.08	3.25	34.60	10.59	28.35	1.20	2.582	0.030
5/31/2015	2.85	10.50	3.69	39.87	10.67	28.68	2.43	2.943	0.061
6/30/2015	1.81	11.00	6.07	20.87	10.73	29.01	3.06	1.613	0.076
7/31/2015	2.38	10.96	4.60	20.19	10.80	29.35	3.69	1.495	0.090
8/31/2015	1.99	9.91	4.99	20.68	10.86	29.66	4.33	1.719	0.105
9/30/2015	1.94	8.96	4.63	20.07	10.92	29.93	4.93	1.820	0.118
10/31/2015	1.95	8.97	4.61	18.00	10.98	30.20	5.49	1.628	0.131
11/30/2015	2.32	11.14	4.81	18.57	11.05	30.54	6.04	1.363	0.143
12/31/2015	2.13	9.42	4.43	17.74	11.12	30.83	6.59	1.518	0.154
1/31/2016	2.82	9.44	3.34	17.77	11.21	31.12	7.14	1.426	0.166
2/29/2016	2.56	8.43	3.30	19.66	11.28	31.37	7.71	1.761	0.178
3/31/2016	2.50	7.47	2.99	16.26	11.36	31.60	8.22	1.603	0.188
4/30/2016	2.29	7.08	3.10	9.93	11.43	31.81	8.52	1.042	0.193
5/31/2016	2.40	7.04	2.93	9.35	11.50	32.03	8.81	0.974	0.199
6/30/2016	2.29	7.02	3.06	9.23	11.57	32.24	9.08	0.975	0.204
7/31/2016	1.87	6.32	3.38	8.48	11.63	32.44	9.35	1.020	0.208
8/31/2016	2.15	6.83	3.18	7.55	11.69	32.65	9.58	0.827	0.212
9/30/2016	1.75	6.56	3.75	4.07	11.75	32.84	9.70	0.482	0.214
10/31/2016	2.55	7.45	2.92	0.42	11.83	33.08	9.72	0.041	0.213
11/30/2016	2.29	7.27	3.17	14.20	11.89	33.29	10.14	1.461	0.220
12/31/2016	2.41	6.63	2.75	29.10	11.97	33.50	11.04	3.161	0.239
1/31/2017	2.55	7.25	2.84	33.90	12.05	33.72	12.10	3.398	0.260
2/28/2017	2.49	7.39	2.96	34.46	12.12	33.93	13.06	3.427	0.279
3/31/2017	2.25	7.77	3.45	27.71	12.19	34.17	13.92	2.723	0.295
4/30/2017	1.94	7.63	3.93	21.23	12.25	34.40	14.56	2.188	0.306
5/31/2017	1.96	7.35	3.74	17.10	12.31	34.63	15.09	1.809	0.316
6/30/2017	2.13	7.50	3.53	13.77	12.37	34.85	15.50	1.409	0.322
7/31/2017	2.13	6.33	2.97	12.23	12.44	35.05	15.88	1.420	0.328
8/31/2017	1.84	5.03	2.74	11.06	12.49	35.20	16.22	1.580	0.334
9/30/2017	2.23	5.94	2.66	10.03	12.56	35.38	16.52	1.205	0.338
10/31/2017	1.82	5.84	3.21	11.42	12.62	35.56	16.88	1.467	0.344
11/30/2017	1.42	5.64	3.96	23.27	12.66	35.73	17.57	3.249	0.357
12/31/2017	1.93	7.85	4.07	24.61	12.72	35.98	18.34	2.482	0.370

# Pattern: 00/08-32-010-28Inj Set: DalyUnit#8BKKN

Oil Formation Vol Factor : 1.07100 m3/m3

Water Formation Vol Factor : 1.00150 m3/m3

Water / Oil Ratio : 3.03 m3/m3

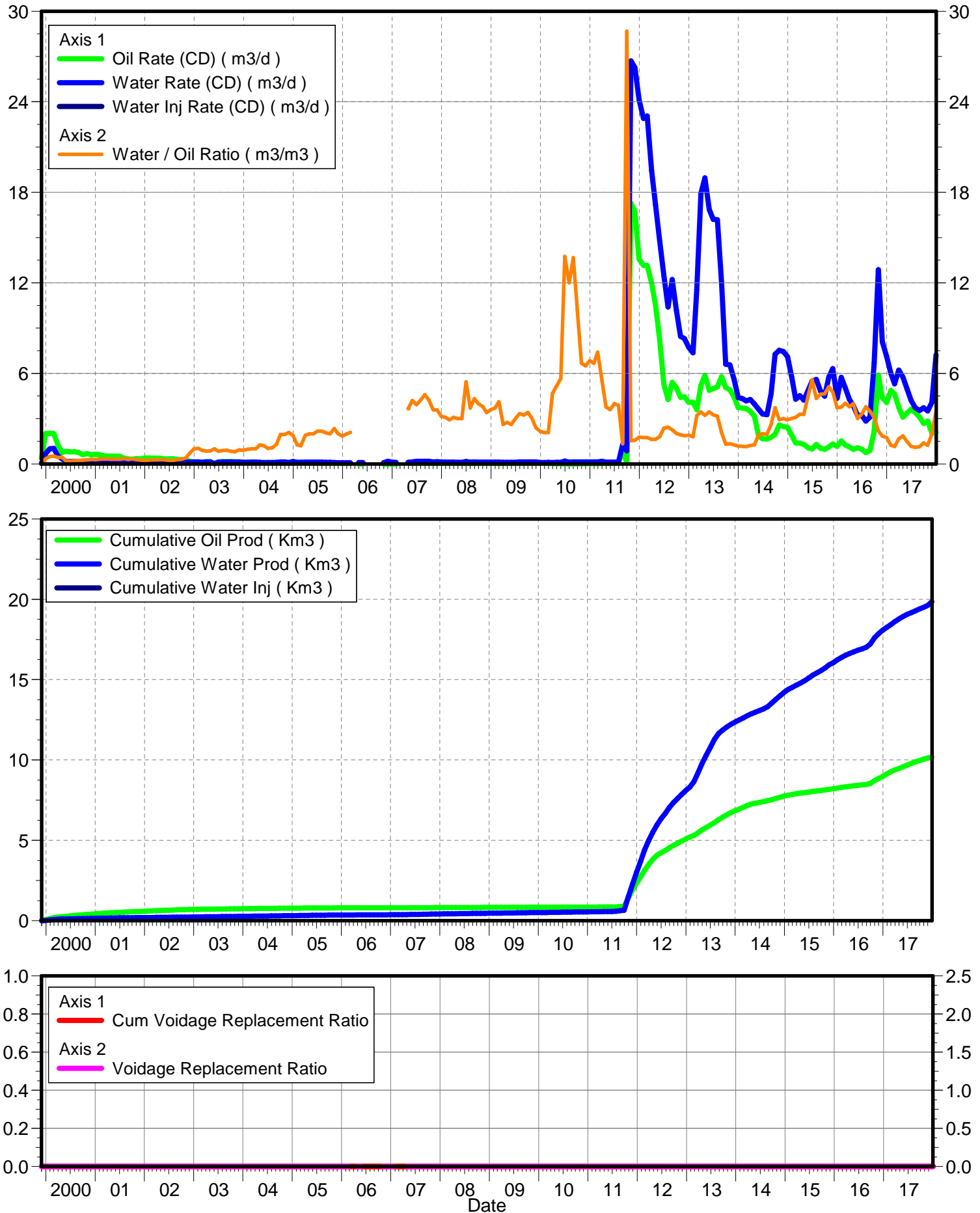
June 06, 2018

Operator: TUNDRA\_OIL\_AND\_GAS\_PARTNER

Oil Rate (CD) : 1.86 m3/d

Water Rate (CD) : 7.57 m3/d

Water Inj Rate (CD) : \* m3/d



Date	Oil Rate (CD) m3/d	Water Rate (CD) m3/d	Water Oil Ratio m3/m3	Water Inj Rate (CD) m3/d	Cum Oil Prod Km3	Cum Water Prod Km3	Cum Water Inj Km3	VRR	Cum VRR
10/31/1999					0.00	0.00	0.00		
11/30/1999	0.38	0.03	0.08		0.01	0.00	0.00	0.000	0.000
12/31/1999	2.01	0.68	0.34		0.07	0.02	0.00	0.000	0.000
1/31/2000	2.03	1.00	0.49		0.14	0.05	0.00	0.000	0.000
2/29/2000	2.00	1.03	0.51		0.19	0.08	0.00	0.000	0.000
3/31/2000	1.26	0.53	0.42		0.23	0.10	0.00	0.000	0.000
4/30/2000	0.75	0.33	0.45		0.26	0.11	0.00	0.000	0.000
5/31/2000	0.84	0.14	0.17		0.28	0.11	0.00	0.000	0.000
6/30/2000	0.80	0.15	0.19		0.31	0.12	0.00	0.000	0.000
7/31/2000	0.81	0.17	0.22		0.33	0.12	0.00	0.000	0.000
8/31/2000	0.75	0.17	0.23		0.35	0.13	0.00	0.000	0.000
9/30/2000	0.62	0.15	0.25		0.37	0.13	0.00	0.000	0.000
10/31/2000	0.68	0.19	0.27		0.39	0.14	0.00	0.000	0.000
11/30/2000	0.61	0.18	0.30		0.41	0.15	0.00	0.000	0.000
12/31/2000	0.63	0.18	0.28		0.43	0.15	0.00	0.000	0.000
1/31/2001	0.61	0.19	0.31		0.45	0.16	0.00	0.000	0.000
2/28/2001	0.54	0.17	0.32		0.47	0.16	0.00	0.000	0.000
3/31/2001	0.52	0.17	0.33		0.48	0.17	0.00	0.000	0.000
4/30/2001	0.51	0.16	0.31		0.50	0.17	0.00	0.000	0.000
5/31/2001	0.51	0.16	0.31		0.51	0.18	0.00	0.000	0.000
6/30/2001	0.51	0.16	0.31		0.53	0.18	0.00	0.000	0.000
7/31/2001	0.38	0.14	0.36		0.54	0.19	0.00	0.000	0.000
8/31/2001	0.32	0.10	0.30		0.55	0.19	0.00	0.000	0.000
9/30/2001	0.31	0.10	0.33		0.56	0.19	0.00	0.000	0.000
10/31/2001	0.35	0.10	0.29		0.57	0.19	0.00	0.000	0.000
11/30/2001	0.34	0.09	0.25		0.58	0.20	0.00	0.000	0.000
12/31/2001	0.40	0.09	0.23		0.59	0.20	0.00	0.000	0.000
1/31/2002	0.39	0.10	0.25		0.61	0.20	0.00	0.000	0.000
2/28/2002	0.38	0.10	0.27		0.62	0.21	0.00	0.000	0.000
3/31/2002	0.38	0.10	0.26		0.63	0.21	0.00	0.000	0.000
4/30/2002	0.36	0.10	0.28		0.64	0.21	0.00	0.000	0.000
5/31/2002	0.32	0.09	0.27		0.65	0.21	0.00	0.000	0.000
6/30/2002	0.34	0.08	0.23		0.66	0.22	0.00	0.000	0.000
7/31/2002	0.34	0.08	0.23		0.67	0.22	0.00	0.000	0.000
8/31/2002	0.28	0.08	0.28		0.68	0.22	0.00	0.000	0.000
9/30/2002	0.28	0.09	0.31		0.69	0.22	0.00	0.000	0.000
10/31/2002	0.29	0.11	0.39		0.70	0.23	0.00	0.000	0.000
11/30/2002	0.16	0.11	0.72		0.70	0.23	0.00	0.000	0.000
12/31/2002	0.13	0.13	1.00		0.70	0.24	0.00	0.000	0.000
1/31/2003	0.14	0.14	1.02		0.71	0.24	0.00	0.000	0.000
2/28/2003	0.12	0.11	0.91		0.71	0.24	0.00	0.000	0.000
3/31/2003	0.15	0.13	0.85		0.72	0.25	0.00	0.000	0.000
4/30/2003	0.15	0.13	0.86		0.72	0.25	0.00	0.000	0.000
5/31/2003	0.03	0.03	1.00		0.72	0.25	0.00	0.000	0.000
6/30/2003	0.14	0.11	0.83		0.73	0.25	0.00	0.000	0.000
7/31/2003	0.14	0.13	0.89		0.73	0.26	0.00	0.000	0.000

Date	Oil Rate (CD) m3/d	Water Rate (CD) m3/d	Water Oil Ratio m3/m3	Water Inj Rate (CD) m3/d	Cum Oil Prod Km3	Cum Water Prod Km3	Cum Water Inj Km3	VRR	Cum VRR
8/31/2003	0.15	0.13	0.91		0.74	0.26	0.00	0.000	0.000
9/30/2003	0.16	0.13	0.83		0.74	0.27	0.00	0.000	0.000
10/31/2003	0.15	0.12	0.81		0.74	0.27	0.00	0.000	0.000
11/30/2003	0.14	0.13	0.93		0.75	0.27	0.00	0.000	0.000
12/31/2003	0.11	0.10	0.91		0.75	0.28	0.00	0.000	0.000
1/31/2004	0.11	0.11	0.97		0.76	0.28	0.00	0.000	0.000
2/29/2004	0.11	0.11	1.00		0.76	0.28	0.00	0.000	0.000
3/31/2004	0.11	0.11	1.00		0.76	0.29	0.00	0.000	0.000
4/30/2004	0.09	0.11	1.27		0.77	0.29	0.00	0.000	0.000
5/31/2004	0.08	0.10	1.20		0.77	0.29	0.00	0.000	0.000
6/30/2004	0.09	0.10	1.04		0.77	0.30	0.00	0.000	0.000
7/31/2004	0.09	0.09	1.07		0.77	0.30	0.00	0.000	0.000
8/31/2004	0.08	0.11	1.31		0.78	0.30	0.00	0.000	0.000
9/30/2004	0.07	0.13	1.95		0.78	0.31	0.00	0.000	0.000
10/31/2004	0.07	0.13	1.95		0.78	0.31	0.00	0.000	0.000
11/30/2004	0.05	0.10	2.07		0.78	0.31	0.00	0.000	0.000
12/31/2004	0.09	0.16	1.89		0.78	0.32	0.00	0.000	0.000
1/31/2005	0.09	0.11	1.26		0.79	0.32	0.00	0.000	0.000
2/28/2005	0.09	0.10	1.21		0.79	0.33	0.00	0.000	0.000
3/31/2005	0.06	0.12	1.89		0.79	0.33	0.00	0.000	0.000
4/30/2005	0.06	0.11	2.00		0.79	0.33	0.00	0.000	0.000
5/31/2005	0.06	0.12	2.00		0.79	0.34	0.00	0.000	0.000
6/30/2005	0.06	0.12	2.18		0.80	0.34	0.00	0.000	0.000
7/31/2005	0.05	0.12	2.18		0.80	0.34	0.00	0.000	0.000
8/31/2005	0.05	0.10	2.07		0.80	0.35	0.00	0.000	0.000
9/30/2005	0.05	0.10	2.00		0.80	0.35	0.00	0.000	0.000
10/31/2005	0.04	0.09	2.33		0.80	0.35	0.00	0.000	0.000
11/30/2005	0.04	0.08	2.00		0.80	0.35	0.00	0.000	0.000
12/31/2005	0.04	0.08	1.85		0.80	0.36	0.00	0.000	0.000
1/31/2006	0.04	0.08	2.00		0.81	0.36	0.00	0.000	0.000
2/28/2006	0.04	0.08	2.09		0.81	0.36	0.00	0.000	0.000
3/31/2006					0.81	0.36	0.00		0.000
4/30/2006	0.00	0.09			0.81	0.36	0.00	0.000	0.000
5/31/2006	0.00	0.09			0.81	0.37	0.00	0.000	0.000
6/30/2006					0.81	0.37	0.00		0.000
7/31/2006					0.81	0.37	0.00		0.000
8/31/2006					0.81	0.37	0.00		0.000
9/30/2006					0.81	0.37	0.00		0.000
10/31/2006	0.00	0.07			0.81	0.37	0.00	0.000	0.000
11/30/2006	0.00	0.18			0.81	0.37	0.00	0.000	0.000
12/31/2006	0.00	0.12			0.81	0.38	0.00	0.000	0.000
1/31/2007	0.00	0.11			0.81	0.38	0.00	0.000	0.000
2/28/2007					0.81	0.38	0.00		0.000
3/31/2007					0.81	0.38	0.00		0.000
4/30/2007	0.03	0.11	3.67		0.81	0.39	0.00	0.000	0.000
5/31/2007	0.03	0.14	4.20		0.81	0.39	0.00	0.000	0.000

Date	Oil Rate (CD) m3/d	Water Rate (CD) m3/d	Water Oil Ratio m3/m3	Water Inj Rate (CD) m3/d	Cum Oil Prod Km3	Cum Water Prod Km3	Cum Water Inj Km3	VRR	Cum VRR
6/30/2007	0.04	0.17	3.92		0.81	0.39	0.00	0.000	0.000
7/31/2007	0.04	0.18	4.23		0.81	0.40	0.00	0.000	0.000
8/31/2007	0.04	0.18	4.58		0.81	0.41	0.00	0.000	0.000
9/30/2007	0.04	0.17	4.25		0.81	0.41	0.00	0.000	0.000
10/31/2007	0.04	0.14	3.58		0.81	0.42	0.00	0.000	0.000
11/30/2007	0.04	0.14	3.58		0.82	0.42	0.00	0.000	0.000
12/31/2007	0.04	0.13	3.15		0.82	0.42	0.00	0.000	0.000
1/31/2008	0.04	0.12	3.08		0.82	0.43	0.00	0.000	0.000
2/29/2008	0.04	0.12	2.92		0.82	0.43	0.00	0.000	0.000
3/31/2008	0.04	0.12	3.08		0.82	0.43	0.00	0.000	0.000
4/30/2008	0.04	0.11	3.00		0.82	0.44	0.00	0.000	0.000
5/31/2008	0.04	0.11	3.00		0.82	0.44	0.00	0.000	0.000
6/30/2008	0.03	0.16	5.44		0.82	0.45	0.00	0.000	0.000
7/31/2008	0.03	0.12	3.70		0.82	0.45	0.00	0.000	0.000
8/31/2008	0.03	0.13	4.33		0.83	0.45	0.00	0.000	0.000
9/30/2008	0.03	0.12	4.00		0.83	0.46	0.00	0.000	0.000
10/31/2008	0.03	0.12	3.80		0.83	0.46	0.00	0.000	0.000
11/30/2008	0.03	0.11	3.40		0.83	0.46	0.00	0.000	0.000
12/31/2008	0.03	0.12	3.60		0.83	0.47	0.00	0.000	0.000
1/31/2009	0.03	0.12	3.70		0.83	0.47	0.00	0.000	0.000
2/28/2009	0.03	0.12	4.13		0.83	0.47	0.00	0.000	0.000
3/31/2009	0.04	0.11	2.62		0.83	0.48	0.00	0.000	0.000
4/30/2009	0.04	0.11	2.75		0.83	0.48	0.00	0.000	0.000
5/31/2009	0.04	0.11	2.62		0.84	0.48	0.00	0.000	0.000
6/30/2009	0.04	0.11	3.00		0.84	0.49	0.00	0.000	0.000
7/31/2009	0.04	0.13	3.33		0.84	0.49	0.00	0.000	0.000
8/31/2009	0.04	0.14	3.23		0.84	0.50	0.00	0.000	0.000
9/30/2009	0.04	0.14	3.42		0.84	0.50	0.00	0.000	0.000
10/31/2009	0.05	0.14	3.00		0.84	0.50	0.00	0.000	0.000
11/30/2009	0.05	0.13	2.38		0.84	0.51	0.00	0.000	0.000
12/31/2009	0.05	0.10	2.14		0.84	0.51	0.00	0.000	0.000
1/31/2010	0.04	0.09	2.08		0.85	0.51	0.00	0.000	0.000
2/28/2010	0.05	0.10	2.07		0.85	0.52	0.00	0.000	0.000
3/31/2010	0.02	0.09	4.67		0.85	0.52	0.00	0.000	0.000
4/30/2010	0.02	0.10	5.17		0.85	0.52	0.00	0.000	0.000
5/31/2010	0.02	0.11	5.67		0.85	0.53	0.00	0.000	0.000
6/30/2010	0.01	0.18	13.75		0.85	0.53	0.00	0.000	0.000
7/31/2010	0.01	0.12	12.00		0.85	0.54	0.00	0.000	0.000
8/31/2010	0.01	0.13	13.67		0.85	0.54	0.00	0.000	0.000
9/30/2010	0.01	0.14	10.25		0.85	0.54	0.00	0.000	0.000
10/31/2010	0.02	0.13	6.67		0.85	0.55	0.00	0.000	0.000
11/30/2010	0.02	0.13	6.50		0.85	0.55	0.00	0.000	0.000
12/31/2010	0.02	0.13	6.83		0.85	0.56	0.00	0.000	0.000
1/31/2011	0.02	0.13	6.67		0.85	0.56	0.00	0.000	0.000
2/28/2011	0.02	0.13	7.40		0.85	0.56	0.00	0.000	0.000
3/31/2011	0.03	0.18	5.50		0.85	0.57	0.00	0.000	0.000

Date	Oil Rate (CD) m3/d	Water Rate (CD) m3/d	Water Oil Ratio m3/m3	Water Inj Rate (CD) m3/d	Cum Oil Prod Km3	Cum Water Prod Km3	Cum Water Inj Km3	VRR	Cum VRR
4/30/2011	0.03	0.11	3.78		0.86	0.57	0.00	0.000	0.000
5/31/2011	0.03	0.12	3.60		0.86	0.58	0.00	0.000	0.000
6/30/2011	0.03	0.12	4.00		0.86	0.58	0.00	0.000	0.000
7/31/2011	0.03	0.11	3.89		0.86	0.58	0.00	0.000	0.000
8/31/2011	0.96	1.27	1.33		0.89	0.62	0.00	0.000	0.000
9/30/2011	0.03	0.86	28.67		0.89	0.65	0.00	0.000	0.000
10/31/2011	17.27	26.72	1.55		1.42	1.48	0.00	0.000	0.000
11/30/2011	16.72	26.25	1.57		1.93	2.26	0.00	0.000	0.000
12/31/2011	13.57	24.13	1.78		2.35	3.01	0.00	0.000	0.000
1/31/2012	13.16	22.90	1.74		2.75	3.72	0.00	0.000	0.000
2/29/2012	13.15	23.06	1.75		3.14	4.39	0.00	0.000	0.000
3/31/2012	11.98	19.45	1.62		3.51	4.99	0.00	0.000	0.000
4/30/2012	10.53	17.16	1.63		3.82	5.51	0.00	0.000	0.000
5/31/2012	8.20	14.75	1.80		4.08	5.97	0.00	0.000	0.000
6/30/2012	5.26	12.49	2.37		4.24	6.34	0.00	0.000	0.000
7/31/2012	4.27	10.40	2.44		4.37	6.66	0.00	0.000	0.000
8/31/2012	5.40	12.23	2.26		4.53	7.04	0.00	0.000	0.000
9/30/2012	5.05	10.19	2.02		4.69	7.35	0.00	0.000	0.000
10/31/2012	4.40	8.45	1.92		4.82	7.61	0.00	0.000	0.000
11/30/2012	4.45	8.30	1.86		4.96	7.86	0.00	0.000	0.000
12/31/2012	4.08	7.73	1.90		5.08	8.10	0.00	0.000	0.000
1/31/2013	4.09	7.36	1.80		5.21	8.33	0.00	0.000	0.000
2/28/2013	3.59	11.54	3.22		5.31	8.65	0.00	0.000	0.000
3/31/2013	5.21	17.94	3.44		5.47	9.21	0.00	0.000	0.000
4/30/2013	5.88	18.95	3.23		5.65	9.77	0.00	0.000	0.000
5/31/2013	4.88	16.85	3.45		5.80	10.30	0.00	0.000	0.000
6/30/2013	4.99	16.21	3.25		5.95	10.78	0.00	0.000	0.000
7/31/2013	5.11	16.19	3.17		6.11	11.28	0.00	0.000	0.000
8/31/2013	5.78	12.03	2.08		6.29	11.66	0.00	0.000	0.000
9/30/2013	5.05	6.60	1.31		6.44	11.86	0.00	0.000	0.000
10/31/2013	4.91	6.57	1.34		6.59	12.06	0.00	0.000	0.000
11/30/2013	4.44	5.61	1.26		6.72	12.23	0.00	0.000	0.000
12/31/2013	3.74	4.39	1.17		6.84	12.36	0.00	0.000	0.000
1/31/2014	3.70	4.33	1.17		6.95	12.50	0.00	0.000	0.000
2/28/2014	3.66	4.17	1.14		7.06	12.61	0.00	0.000	0.000
3/31/2014	3.49	4.28	1.23		7.17	12.75	0.00	0.000	0.000
4/30/2014	3.15	3.96	1.26		7.26	12.87	0.00	0.000	0.000
5/31/2014	1.86	3.62	1.95		7.32	12.98	0.00	0.000	0.000
6/30/2014	1.66	3.31	1.99		7.37	13.08	0.00	0.000	0.000
7/31/2014	1.65	3.26	1.97		7.42	13.18	0.00	0.000	0.000
8/31/2014	1.78	4.66	2.62		7.47	13.32	0.00	0.000	0.000
9/30/2014	1.95	7.27	3.72		7.53	13.54	0.00	0.000	0.000
10/31/2014	2.57	7.54	2.93		7.61	13.78	0.00	0.000	0.000
11/30/2014	2.48	7.44	3.00		7.69	14.00	0.00	0.000	0.000
12/31/2014	2.43	7.10	2.92		7.76	14.22	0.00	0.000	0.000
1/31/2015	1.90	5.75	3.02		7.82	14.40	0.00	0.000	0.000

Date	Oil Rate (CD) m3/d	Water Rate (CD) m3/d	Water Oil Ratio m3/m3	Water Inj Rate (CD) m3/d	Cum Oil Prod Km3	Cum Water Prod Km3	Cum Water Inj Km3	VRR	Cum VRR
2/28/2015	1.39	4.28	3.09		7.86	14.52	0.00	0.000	0.000
3/31/2015	1.37	4.52	3.30		7.90	14.66	0.00	0.000	0.000
4/30/2015	1.29	4.24	3.27		7.94	14.78	0.00	0.000	0.000
5/31/2015	1.09	4.85	4.46		7.97	14.93	0.00	0.000	0.000
6/30/2015	0.98	5.49	5.58		8.00	15.10	0.00	0.000	0.000
7/31/2015	1.29	5.60	4.35		8.04	15.27	0.00	0.000	0.000
8/31/2015	1.05	4.84	4.62		8.08	15.42	0.00	0.000	0.000
9/30/2015	0.97	4.49	4.64		8.11	15.56	0.00	0.000	0.000
10/31/2015	1.12	5.75	5.11		8.14	15.74	0.00	0.000	0.000
11/30/2015	1.32	6.32	4.77		8.18	15.92	0.00	0.000	0.000
12/31/2015	1.17	4.35	3.71		8.22	16.06	0.00	0.000	0.000
1/31/2016	1.53	5.73	3.76		8.26	16.24	0.00	0.000	0.000
2/29/2016	1.25	5.04	4.02		8.30	16.38	0.00	0.000	0.000
3/31/2016	1.13	4.27	3.79		8.34	16.52	0.00	0.000	0.000
4/30/2016	0.96	3.86	4.00		8.36	16.63	0.00	0.000	0.000
5/31/2016	1.06	3.21	3.02		8.40	16.73	0.00	0.000	0.000
6/30/2016	0.97	3.22	3.30		8.43	16.83	0.00	0.000	0.000
7/31/2016	0.75	2.84	3.79		8.45	16.92	0.00	0.000	0.000
8/31/2016	0.89	3.11	3.48		8.48	17.01	0.00	0.000	0.000
9/30/2016	2.18	6.70	3.07		8.54	17.21	0.00	0.000	0.000
10/31/2016	5.89	12.87	2.19		8.72	17.61	0.00	0.000	0.000
11/30/2016	4.40	8.10	1.84		8.86	17.86	0.00	0.000	0.000
12/31/2016	4.07	7.11	1.75		8.98	18.08	0.00	0.000	0.000
1/31/2017	4.86	5.99	1.23		9.13	18.26	0.00	0.000	0.000
2/28/2017	4.63	5.30	1.15		9.26	18.41	0.00	0.000	0.000
3/31/2017	3.75	6.22	1.66		9.38	18.60	0.00	0.000	0.000
4/30/2017	3.11	5.75	1.85		9.47	18.78	0.00	0.000	0.000
5/31/2017	3.37	4.96	1.47		9.58	18.93	0.00	0.000	0.000
6/30/2017	3.63	4.22	1.16		9.69	19.06	0.00	0.000	0.000
7/31/2017	3.41	3.72	1.09		9.79	19.17	0.00	0.000	0.000
8/31/2017	3.10	3.54	1.14		9.89	19.28	0.00	0.000	0.000
9/30/2017	2.68	3.72	1.39		9.97	19.39	0.00	0.000	0.000
10/31/2017	2.84	3.51	1.24		10.06	19.50	0.00	0.000	0.000
11/30/2017	2.04	4.08	2.00		10.12	19.62	0.00	0.000	0.000
12/31/2017	2.08	7.23	3.47		10.18	19.85	0.00	0.000	0.000