

TORC OIL & GAS LTD.

EAST MANSON UNIT #6

ENHANCED OIL RECOVERY (EOR) ANNUAL REPORT

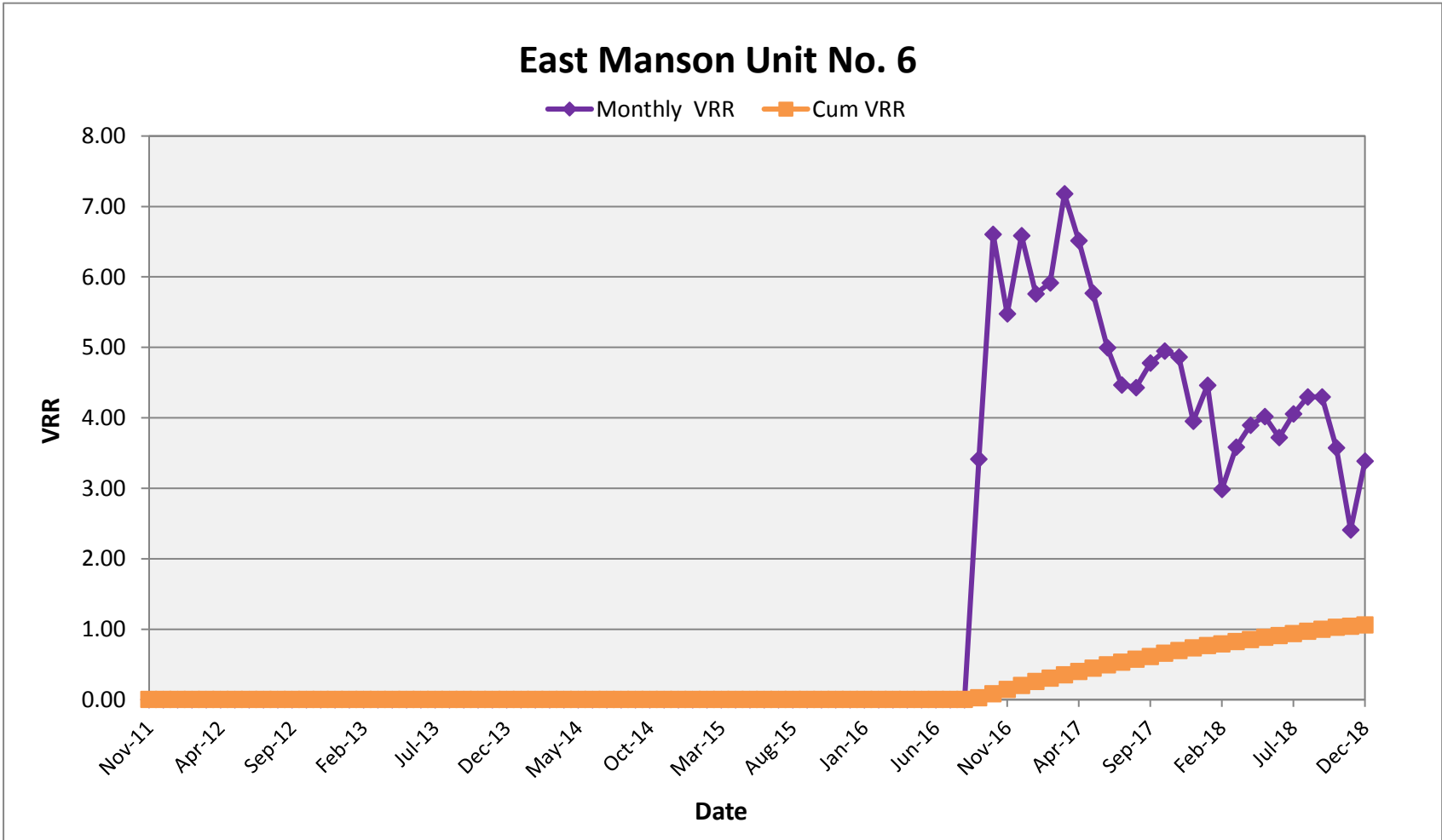
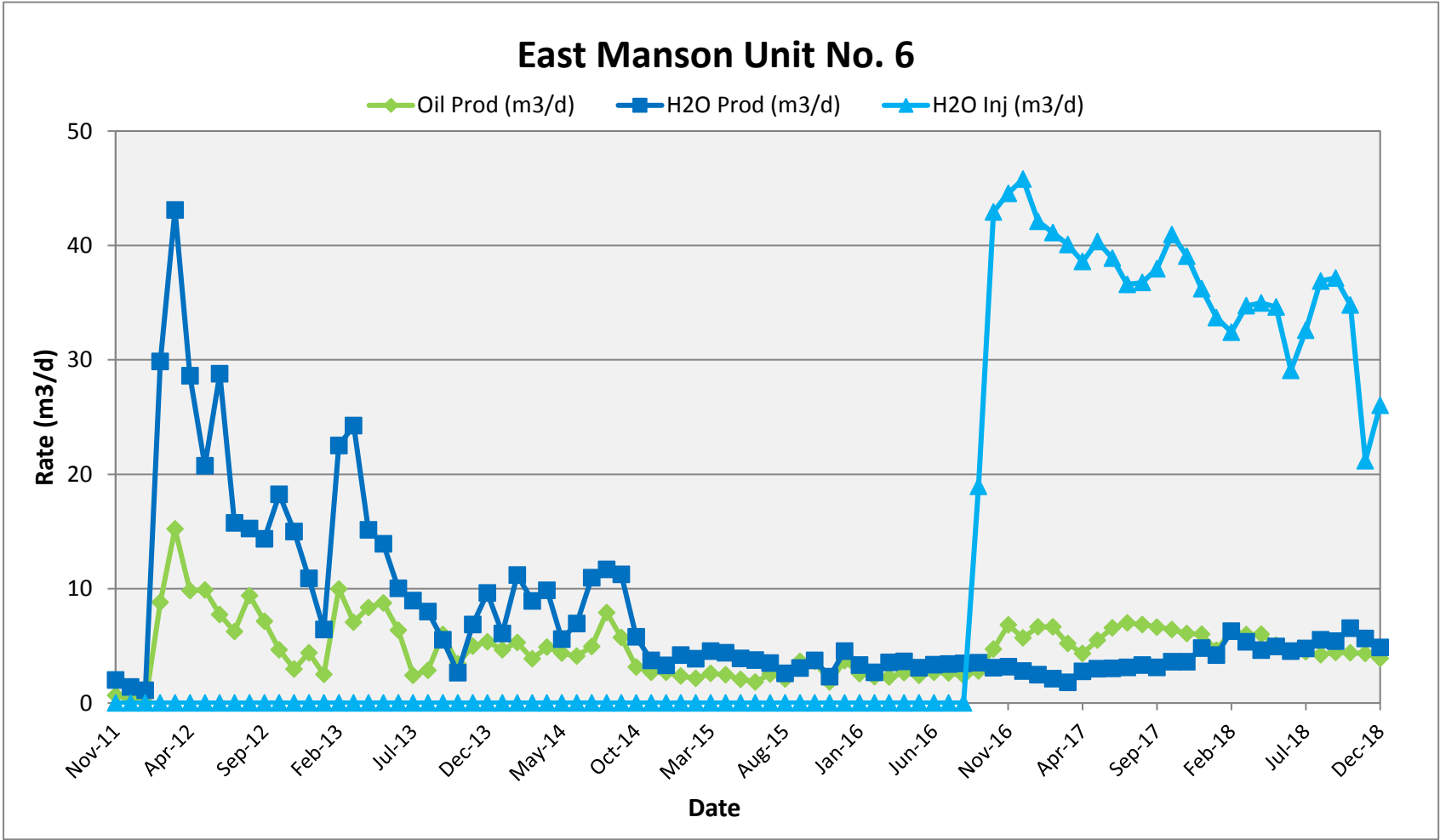
Discussion:

East Manson Unit #6 (EMU #6) delivered another year of steady and reliable flood performance throughout 2018. In its second full year since inception, this flood continued to show that injection conformance has been effective in arresting production decline and providing sufficient pressure maintenance to the reservoir.

EMU 6 was another beneficiary of the capital project to increase operating pressure of the injection pipeline system. However, similar to other units, TORC realized that more water injection is not always better. The offsetting producing wells experienced slightly higher water cut with little to no impact on oil production.

TORC will focus its efforts on waterflood optimization in 2019, which will include revising waterflood targets to lower the monthly VRR to ~1.0 within EMU 6.

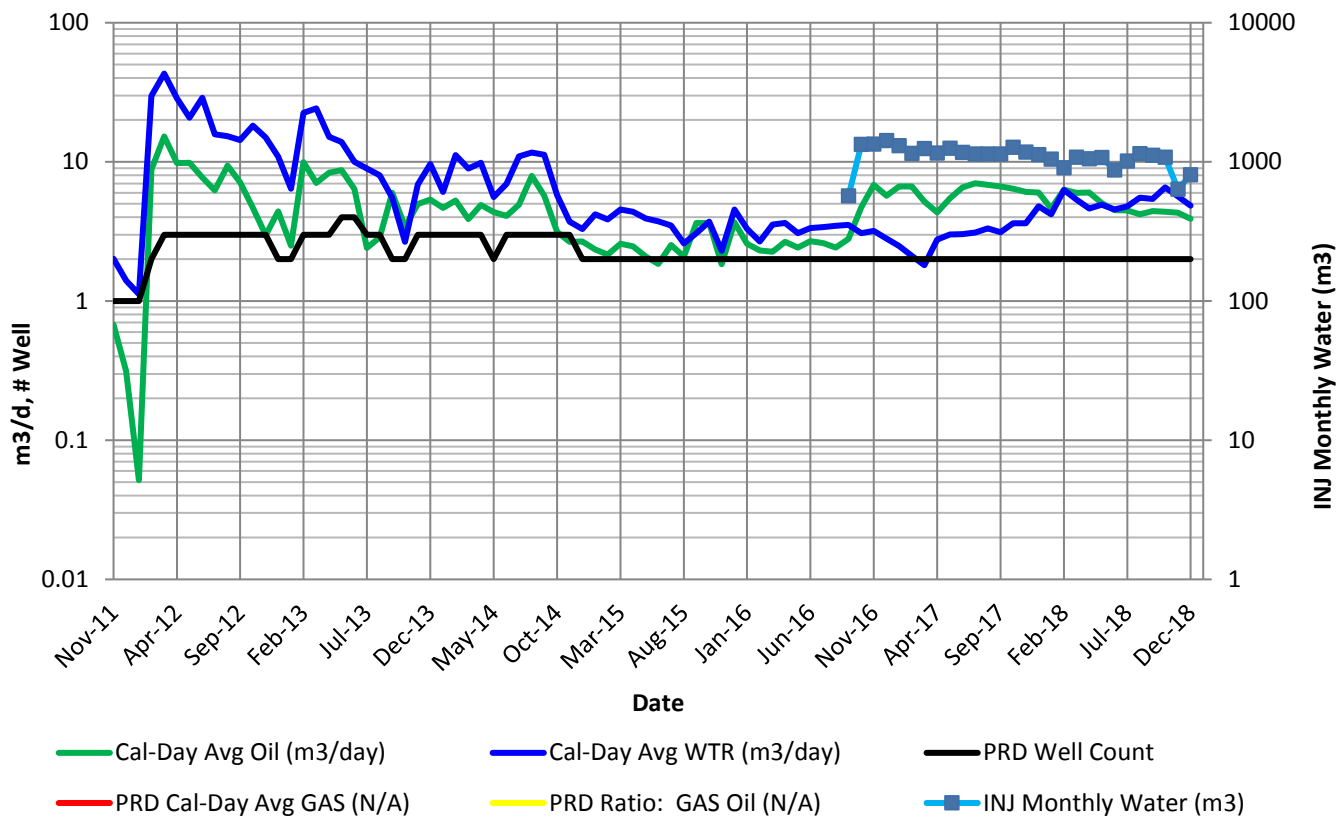
	Date	Oil Prod (m3/d)	Gas Prod (e3m3/d)	H2O Prod (m3/d)	H2O Inj (m3/d)	Monthly VRR	Cum VRR	Cum PRD Oil (m3)	Cum PRD Gas (e3m3)	Cum PRD Water (m3)	Cum INJ Water (m3)
EMU No.6	Dec-2018	4	-	5	26	3.38	1.057	12,540	-	19,956	30,722



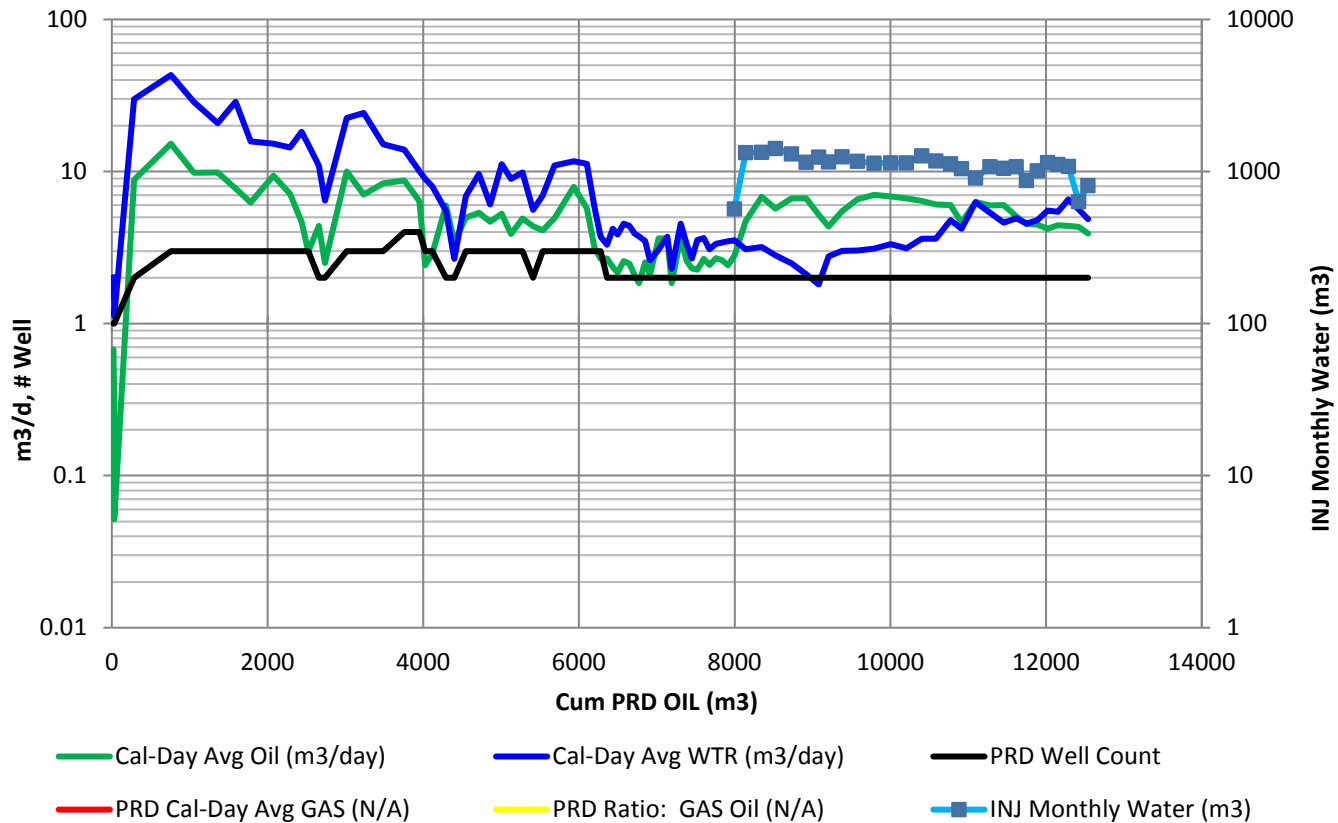
East Manson Unit No. 6 (Section 28-013-28W1) - VRR Table																										
Month	Days	Monthly Oil Prod (bbl)	Monthly Oil Prod (m3)	Monthly Gas Prod (E3m3)	Monthly H2O Prod (bbl)	Monthly H2O Prod (m3)	Monthly H2O Inj (bbl)	Monthly H2O Inj (m3)	Oil Prod (m3/d)	Gas Prod (E3m3/d)	H2O Prod (m3/d)	H2O Inj (m3/d)	Cum Oil (bbl)	Cum Oil (m3)	Cum Gas (E3m3)	Cum H2O (m3)	Cum H2O Inj (m3)	Prod Well Count	GOR (m3/m3)	H2OCut %	Voidage (rm3/d)	Monthly VRR	Cum GOR (m3/m3)	H2OCut %	Cum Void (rm3)	Cum VRR
Nov-11	30	128	20.3	0	381	60.5	0	0	1	0	2	0	128	20	0	61	0	1	0	74.9%	3	0.00	0.0	74.9%	75.7	0.000
Dec-11	31	61	9.7	0	274	43.5	0	0	0	0	1	0	189	30	0	104	0	1	0	81.8%	2	0.00	0.0	77.6%	126.5	0.000
Jan-12	31	10	1.6	0	218	34.7	0	0	0	0	1	0	199	32	0	139	0	1	0	95.6%	1	0.00	0.0	81.4%	162.5	0.000
Feb-12	29	1,607	255.4	0	5,445	865.7	0	0	9	0	30	0	1,805	287	0	1004	0	2	0	77.2%	36	0.00	0.0	77.8%	1219.1	0.000
Mar-12	31	2,971	472.3	0	8,405	1,336.2	0	0	15	0	43	0	4,776	759	0	2341	0	3	0	73.9%	54	0.00	0.0	75.5%	2906.9	0.000
Apr-12	30	1,851	294.3	0	5,399	858.4	0	0	10	0	29	0	6,628	1054	0	3199	0	3	0	74.5%	36	0.00	0.0	75.2%	3984.5	0.000
May-12	31	1,924	305.9	0	4,046	643.3	0	0	10	0	21	0	8,552	1360	0	3842	0	3	0	67.8%	28	0.00	0.0	73.9%	4854.4	0.000
Jun-12	30	1,458	231.8	0	5,433	863.8	0	0	8	0	29	0	10,010	1591	0	4706	0	3	0	78.8%	35	0.00	0.0	74.7%	5891.8	0.000
Jul-12	31	1,217	193.5	0	3,073	488.5	0	0	6	0	16	0	11,227	1785	0	5195	0	3	0	71.6%	20	0.00	0.0	74.4%	6524.1	0.000
Aug-12	31	1,833	291.4	0	2,975	472.9	0	0	9	0	15	0	13,060	2076	0	5668	0	3	0	61.9%	22	0.00	0.0	73.2%	7212.2	0.000
Sep-12	30	1,347	214.2	0	2,708	430.6	0	0	7	0	14	0	14,408	2291	0	6098	0	3	0	66.8%	20	0.00	0.0	72.7%	7801.3	0.000
Oct-12	31	909	144.6	0	3,558	565.7	0	0	5	0	18	0	15,317	2435	0	6664	0	3	0	79.6%	22	0.00	0.0	73.2%	8475.4	0.000
Nov-12	30	562	89.3	0	2,830	449.9	0	0	3	0	15	0	15,879	2524	0	7114	0	3	0	83.4%	17	0.00	0.0	73.8%	8992.8	0.000
Dec-12	31	857	136.3	0	2,126	338.0	0	0	4	0	11	0	16,736	2661	0	7452	0	2	0	71.3%	14	0.00	0.0	73.7%	9431.9	0.000
Jan-13	31	488	77.6	0	1,254	199.3	0	0	3	0	6	0	17,224	2738	0	7651	0	2	0	72.0%	8	0.00	0.0	73.6%	9688.9	0.000
Feb-13	28	1,758	279.5	0	3,963	630.1	0	0	10	0	23	0	18,982	3018	0	8281	0	3	0	69.3%	30	0.00	0.0	73.3%	10526.3	0.000
Mar-13	31	1,375	218.6	0	4,730	752.0	0	0	7	0	24	0	20,357	3236	0	9033	0	3	0	77.5%	30	0.00	0.0	73.6%	11441.7	0.000
Apr-13	30	1,577	250.7	0	2,854	453.8	0	0	8	0	15	0	21,934	3487	0	9487	0	3	0	64.4%	21	0.00	0.0	73.1%	12080.9	0.000
May-13	31	1,705	271.0	0	2,715	431.6	0	0	9	0	14	0	23,639	3758	0	9919	0	4	0	61.4%	20	0.00	0.0	72.5%	12712.5	0.000
Jun-13	30	1,203	191.3	0	1,893	300.9	0	0	6	0	10	0	24,842	3950	0	10219	0	4	0	61.1%	15	0.00	0.0	72.1%	13154.6	0.000
Jul-13	31	471	74.8	0	1,746	277.5	0	0	2	0	9	0	25,313	4024	0	10497	0	3	0	78.8%	11	0.00	0.0	72.3%	13488.2	0.000
Aug-13	31	559	88.9	0	1,559	247.9	0	0	3	0	8	0	25,873	4113	0	10745	0	3	0	73.6%	10	0.00	0.0	72.3%	13802.3	0.000
Sep-13	30	1,128	179.4	0	1,041	165.6	0	0	6	0	6	0	27,001	4293	0	10910	0	2	0	48.0%	10	0.00	0.0	71.8%	14099.6	0.000
Oct-13	31	668	106.1	0	519	82.4	0	0	3	0	3	0	27,668	4399	0	10993	0	2	0	43.7%	5	0.00	0.0	71.4%	14260.0	0.000
Nov-13	30	940	149.4	0	1,297	206.2	0	0	5	0	7	0	28,608	4548	0	11199	0	3	0	58.0%	11	0.00	0.0	71.1%	14576.3	0.000
Dec-13	31	1,046	166.3	0	1,878	298.5	0	0	5	0	10	0	29,654	4714	0	11498	0	3	0	64.2%	14	0.00	0.0	70.9%	14997.7	0.000
Jan-14	31	911	144.8	0	1,186	188.6	0	0	5	0	6	0	30,564	4859	0	11686	0	3	0	56.6%	10	0.00	0.0	70.6%	15292.9	0.000
Feb-14	28	931	148.0	0	1,971	313.3	0	0	5	0	11	0	31,495	5007	0	12000	0	3	0	67.9%	15	0.00	0.0	70.6%	15715.9	0.000
Mar-14	31	756	120.3	0	1,743	277.0	0	0	4	0	9	0	32,252	5127	0	12277	0	3	0	69.7%	12	0.00	0.0	70.5%	16082.1	0.000
Apr-14	30	924	146.9	0	1,858	295.3	0	0	5	0	10	0	33,175	5274	0	12572	0	3	0	66.8%	13	0.00	0.0	70.4%	16486.1	0.000
May-14	31	850	135.2	0	1,090	173.3	0	0	4	0	6	0	34,026	5409	0	12745	0	2	0	56.2%	9	0.00	0.0	70.2%	16759.0	0.000
Jun-14	30	774	123.1	0	1,311	208.5	0	0	4	0	7	0	34,800	5533	0	12954	0	3	0	62.9%	10	0.00	0.0	70.1%	17058.4	0.000
Jul-14	31	963	153.1	0	2,135	339.5	0	0	5	0	11	0	35,762	5686	0	13293	0	3	0	68.9%	15	0.00	0.0	70.0%	17511.3	0.000
Aug-14	31	1,544	245.5	0	2,279	362.3	0	0	8	0	12	0	37,307	5931	0	13655	0	3	0	59.6%	18	0.00	0.0	69.7%	18054.6	0.000
Sep-14	30	1,079	171.5	0	2,123	337.5	0	0	6	0	11	0	38,385	6103	0	13993	0	3	0	66.3%	15	0.00	0.0	69.6%	18519.0	0.000
Oct-14	31	612	97.2	0	1,126	179.1	0	0	3	0	6	0	38,997	6200	0	14172	0	3	0	64.8%	8	0.00	0.0	69.6%	18769.9	0.000
Nov-14	30	503	80.0	0	701	111.5	0	0	3	0	4	0	39,500	6280	0	14283	0	3	0	58.2%	6	0.00	0.0	69.5%	18940.4	0.000
Dec-14	31	521	82.8	0	642	102.0	0	0	3	0	3	0	40,021	6363	0	14385	0	2	0	55.2%	5	0.00	0.0	69.3%	19103.4	0.000
Jan-15	31	458	72.8	0	817	130.0	0	0	2	0	4	0	40,480	6436	0	14515	0	2	0	64.1%	6	0.00	0.0	69.3%	19287.2	0.000
Feb-15	28	381	60.5	0	680	108.0	0	0	2	0	4	0	40,860	6496	0	14623	0	2	0	64.1%	5	0.00	0.0	69.2%	19440.0	0.000
Mar-15	31	503	80.0	0	886	140.9	0	0	3	0	5	0	41,364	6576	0	14764	0	2	0	63.8%	6	0.00	0.0	69.2%	19640.0	0.000
Apr-15	30	467	74.2	0	827	131.5	0	0	2	0	4	0	41,831	6650	0	14896	0	2	0	63.9%	6	0.00	0.0	69.1%	19826.3	0.000
May-15	31	407	64.6	0	763	121.4	0	0	2	0	4	0	42,237	6715	0	15017	0	2	0	65.3%	5	0.00	0.0	69.1%	19995.5	0.000
Jun-15	30	349	55.4	0	707	112.5	0	0	2	0	4	0	42,586	6770	0	15130	0	2	0	67.0%	5	0.00	0.0	69.1%	20148.9	0.000
Jul-15	31	492	78.2	0	681	108.2	0	0	3	0	3	0	43,078	6849	0	15238	0	2	0	58.0%	5	0.00	0.0	69.0%	20314.9	0.000
Aug-15	31	408	64.8	0	507	80.5	0	0	2	0	3	0	43,486	6913	0	15318	0	2	0	55.4%	4	0.00	0.0	68.9%	20443.1	0.000
Sep-15	30	687	109.2	0	580	92.1	0	0	4	0	3	0	44,173	7023	0	15411	0	2	0	45.8%	6	0.00	0.0	68.7%	20615.5	0.000
Oct-15	31	709	112.8	0	726	115.4	0	0	4	0	4	0	44,882	7135	0	15526	0	2	0	50.6%	6	0.00	0.0	68.5%	20813.7	0.000
Nov-15	30	348	55.3	0	434	68.9	0	0	2	0	2	0	45,230	7191	0	15595	0	2	0	55.5%	4	0.00	0.0	68.4%	20923.4	0.000
Dec-15	31	719	114.4	0	887	141.1	0	0	4	0	5	0	45,949	7305	0	15736	0	2	0	55.2%	7	0.00	0.0	68.3%	21148.7	0.000
Jan-16	31	502	79.8	0	645	102.5	0	0	3	0	3	0	46,451	7385	0	15838	0	2	0	56.2%	5	0.00	0.0	68.2%	21310.0	0.000
Feb-16	29	421	66.9	0	490	77.8	0	0	2	0	3	0	46,872	7452	0	15916	0	2	0	53.8%	4	0.00	0.0	68.1%	21437.1	0.000
Mar-16	31	441	70.1	0	690	109.8	0	0	2	0	4	0	47,314	7522	0	16026	0	2	0	61.0%	5	0.00	0.0	68.1%	21598.6	0.000
Apr-16	30	502	79.8	0	689	109.6	0	0	3	0	4	0	47,816	7602	0	16136	0	2	0	57.8%	6	0.00	0.0	68.0%	21767.0	0.000
May-16	31	473	75.2	0	600	95.4	0	0	2	0	3	0	48,289	7677	0	16231	0	2	0	55.9%	5	0.00	0.0	67.9%	21917.8	0.000
Jun-16	3																									

East Manson Unit No. 6 (Section 28-013-28W1) - VRR Table																										
Month	Days	Monthly	Monthly	Monthly	Monthly	Monthly	Monthly	Monthly	Oil Prod	Gas Prod	H2O Prod	H2O Inj	Cum Oil	Cum Oil	Cum Gas	Cum H2O	Cum H2O Inj	Prod	GOR							
		Oil Prod	Oil Prod	Gas Prod	H2O Prod	H2O Prod	H2O Inj	H2O Inj												H2OCut	Voidage	Monthly	Cum GOR	H2OCut	Cum Void	Cum VRR
		(bbl)	(m3)	(E3m3)	(bbl)	(m3)	(bbl)	(m3)	(m3/d)	(E3m3/d)	(m3/d)	(m3/d)	(bbl)	(m3)	(E3m3)	(m3)	(m3)	Well	(m3/m3)	%	(rm3/d)	VRR	(m3/m3)	%	(rm3)	
Feb-17	28	1,172	186.4	0	373	59.2	7,241	1,151	7	0	2	41	56,091	8917	0	17065	7113	2	0	24.1%	7	5.92	0.0	65.7%	23661.4	0.302
Mar-17	31	1,013	161.1	0	353	56.1	7,815	1,242	5	0	2	40	57,104	9079	0	17121	8355	2	0	25.8%	6	7.18	0.0	65.3%	23835.4	0.352
Apr-17	30	819	130.2	0	523	83.1	7,282	1,158	4	0	3	39	57,923	9209	0	17204	9513	2	0	39.0%	6	6.52	0.0	65.1%	24014.0	0.398
May-17	31	1,070	170.2	0	587	93.2	7,867	1,251	5	0	3	40	58,993	9379	0	17297	10764	2	0	35.4%	7	5.77	0.0	64.8%	24231.9	0.446
Jun-17	30	1,238	196.8	0	570	90.5	7,337	1,166	7	0	3	39	60,231	9576	0	17388	11930	2	0	31.5%	8	5.00	0.0	64.5%	24466.6	0.490
Jul-17	31	1,366	217.2	0	606	96.3	7,137	1,135	7	0	3	37	61,597	9793	0	17484	13065	2	0	30.7%	8	4.47	0.0	64.1%	24722.0	0.531
Aug-17	31	1,336	212.4	0	648	103.0	7,168	1,140	7	0	3	37	62,933	10005	0	17587	14204	2	0	32.7%	8	4.43	0.0	63.7%	24980.6	0.572
Sep-17	30	1,254	199.3	0	590	93.7	7,163	1,139	7	0	3	38	64,187	10205	0	17681	15343	2	0	32.0%	8	4.78	0.0	63.4%	25220.3	0.611
Oct-17	31	1,251	198.9	0	705	112.2	7,988	1,270	6	0	4	41	65,438	10403	0	17793	16613	2	0	36.1%	8	4.95	0.0	63.1%	25478.2	0.655
Nov-17	30	1,148	182.5	0	683	108.7	7,373	1,172	6	0	4	39	66,585	10586	0	17902	17785	2	0	37.3%	8	4.86	0.0	62.8%	25720.6	0.695
Dec-17	31	1,174	186.6	0	935	148.7	7,064	1,123	6	0	5	36	67,759	10773	0	18051	18908	2	0	44.3%	9	3.95	0.0	62.6%	26006.2	0.731
Jan-18	31	900	143.1	0	819	130.3	6,572	1,045	5	0	4	34	68,659	10916	0	18181	19953	2		47.7%	8	4.46	0.0	62.5%	26241.6	0.764
Feb-18	28	1,114	177.1	0	1,105	175.7	5,708	908	6	0	6	32	69,773	11093	0	18356	20861	2		49.8%	11	2.98	0.0	62.3%	26547.4	0.790
Mar-18	31	1,165	185.3	0	1,043	165.9	6,772	1,077	6	0	5	35	70,938	11278	0	18522	21937	2		47.2%	10	3.58	0.0	62.2%	26849.4	0.821
Apr-18	30	1,134	180.3	0	870	138.4	6,600	1,049	6	0	5	35	72,072	11458	0	18661	22987	2		43.4%	9	3.90	0.0	62.0%	27120.1	0.852
May-18	31	988	157.1	0	963	153.1	6,752	1,073	5	0	5	35	73,060	11615	0	18814	24060	2		49.4%	9	4.02	0.0	61.8%	27388.6	0.883
Jun-18	30	851	135.3	0	857	136.3	5,487	872	5	0	5	29	73,911	11751	0	18950	24932	2		50.2%	8	3.72	0.0	61.7%	27624.3	0.907
Jul-18	31	873	138.9	0	933	148.4	6,355	1,010	4	0	5	33	74,784	11889	0	19098	25943	2		51.7%	8	4.05	0.0	61.6%	27874.7	0.935
Aug-18	31	821	130.6	0	1,078	171.4	7,195	1,144	4	0	6	37	75,606	12020	0	19270	27087	2		56.8%	9	4.30	0.0	61.6%	28142.3	0.967
Sep-18	30	836	133.0	0	1,023	162.7	7,008	1,114	4	0	5	37	76,442	12153	0	19432	28201	2		55.0%	9	4.30	0.0	61.5%	28402.9	0.998
Oct-18	31	855	136.0	0	1,277	203.1	6,786	1,079	4	0	7	35	77,297	12289	0	19636	29280	2		59.9%	10	3.57	0.0	61.5%	28706.2	1.025
Nov-18	30	816	129.7	0	1,067	169.7	3,997	635	4	0	6	21	78,113	12419	0	19805	29915	2		56.7%	9	2.41	0.0	61.5%	28971.4	1.038
Dec-18	31	761	121.0	0	947	150.6	5,075	807	4	0	5	26	78,874	12540	0	19956	30722	2		55.4%	8	3.38	0.0	61.4%	29211.1	1.057

East Manson Unit No. 6 - Rate Time



East Manson Unit No. 6 - Rate Cum



East Manson Unit No. 6 - Injection Parameters

Month	Oil Rate (m3/d)	Gas Rate (e3m3/d)	Water Rate (m3/d)	Water Inj Rate (m3/d)	Water Inj Press (psi)	Cum Oil (m3)	Cum Gas (e3m3)	Cum Water (m3)	Cum Inj Water (m3)	GOR (m3/m3)	WOR (m3/m3)
Jan-18	4.6	0.0	4.2	33.7	551	10,916	0.0	18,181	19953.2	0	0.91
Feb-18	6.3	0.0	6.3	32.4	557	11,093	0.0	18,356	20860.7	0	0.99
Mar-18	6.0	0.0	5.4	34.7	567	11,278	0.0	18,522	21937.3	0	0.90
Apr-18	6.0	0.0	4.6	35.0	565	11,458	0.0	18,661	22986.6	0	0.77
May-18	5.1	0.0	4.9	34.6	566	11,615	0.0	18,814	24060.0	0	0.97
Jun-18	4.5	0.0	4.5	29.1	535	11,751	0.0	18,950	24932.4	0	1.01
Jul-18	4.5	0.0	4.8	32.6	601	11,889	0.0	19,098	25942.7	0	1.07
Aug-18	4.2	0.0	5.5	36.9	699	12,020	0.0	19,270	27086.6	0	1.31
Sep-18	4.4	0.0	5.4	37.1	721	12,153	0.0	19,432	28200.8	0	1.22
Oct-18	4.4	0.0	6.6	34.8	721	12,289	0.0	19,636	29279.7	0	1.49
Nov-18	4.3	0.0	5.7	21.2	530	12,419	0.0	19,805	29915.0	0	1.31
Dec-18	3.9	0.0	4.9	26.0	481	12,540	0.0	19,956	30721.9	0	1.24

02/01-28-013-28W1 Rate vs Pressure

