

Hydrologic Forecast Centre - Manitoba Transportation and Infrastructure

Red River Tributary Flows		
Last Reading Date	Hydrometric Stations	Flow (cfs)
13-May-24	Pembina River near Windygates	174
13-May-24	Roseau River at Gardenton	742
13-May-24	Roseau River near Dominion City	872
13-May-24	Rat River near Sundown	141
13-May-24	Rat River near Otterburne	330
13-May-24	Main Drain near Dominion City	2
13-May-24	Joubert Creek at St. Pierre-Jolys	83
20-Apr-24	Shannon Creek near Morris	6
13-May-24	Morris River near Rosenort	47
13-May-24	Little Morris River near Rosenort	43
13-May-24	Boyne River near Carman	51
13-May-24	La Salle River near Sanford	3
13-May-24	Netley Creek near Petersfield	21

Note: Please go to the next pages to view the historical and current flow hydrographs for these rivers

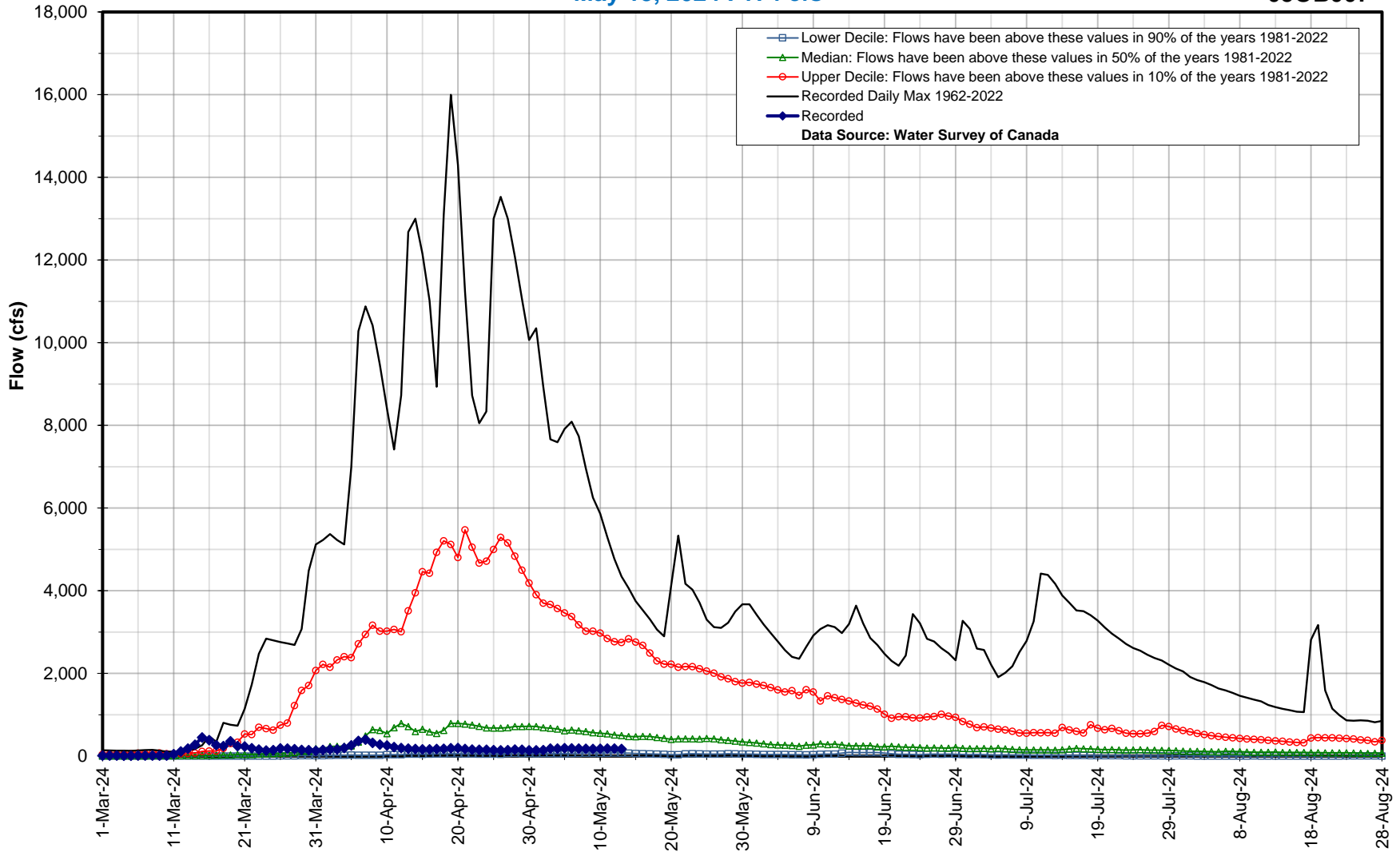
* Real-time flow and level data is provisional and subject to change. Data provided by Water Survey of Canada/Environment Canada

Hydrologic Forecast Centre - Manitoba Transportation and Infrastructure

Pembina River near Windygates

May 13, 2024 : 174 cfs

05OB007

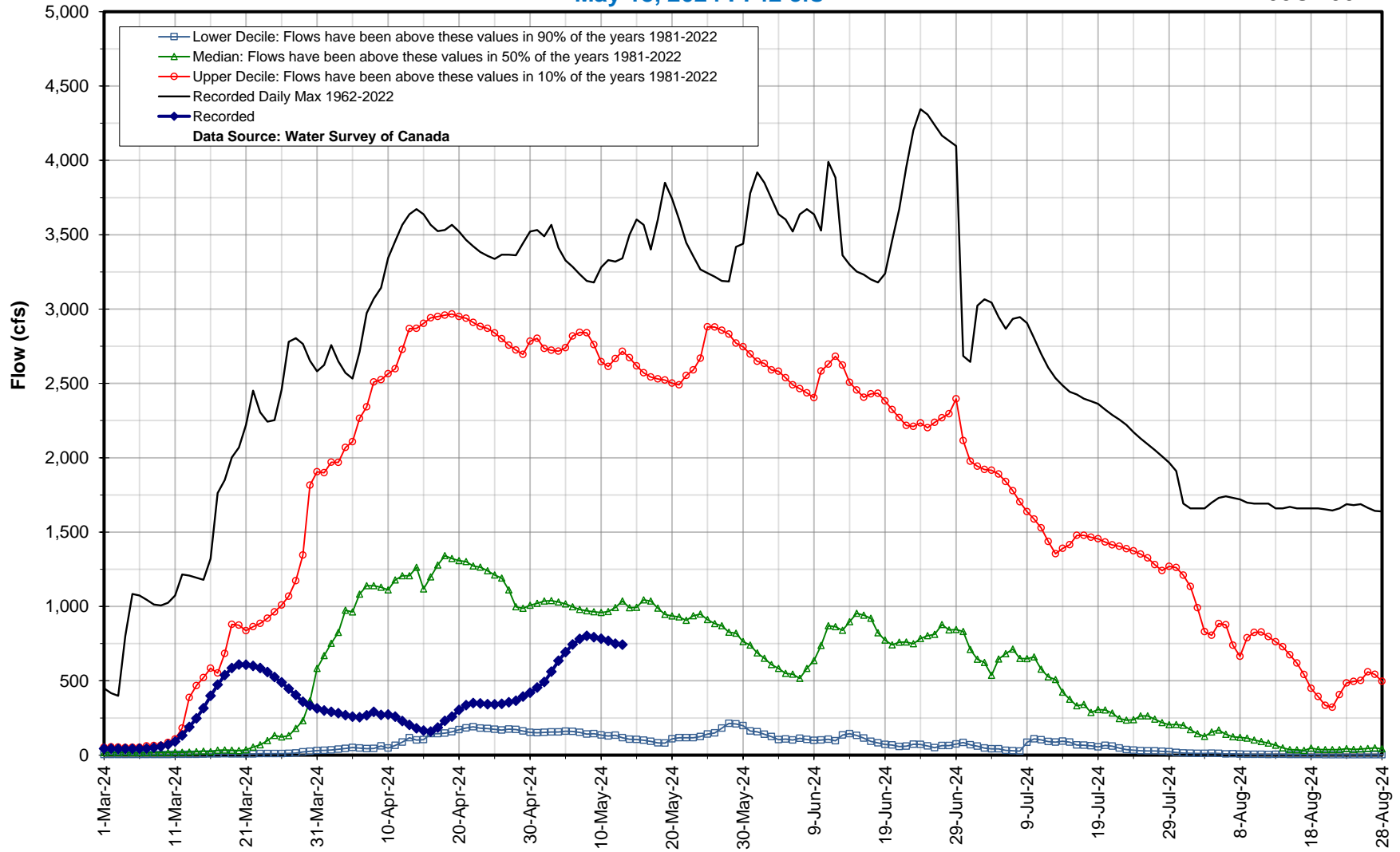


Hydrologic Forecast Centre - Manitoba Transportation and Infrastructure

Roseau River at Gardenton

May 13, 2024 : 742 cfs

050D004

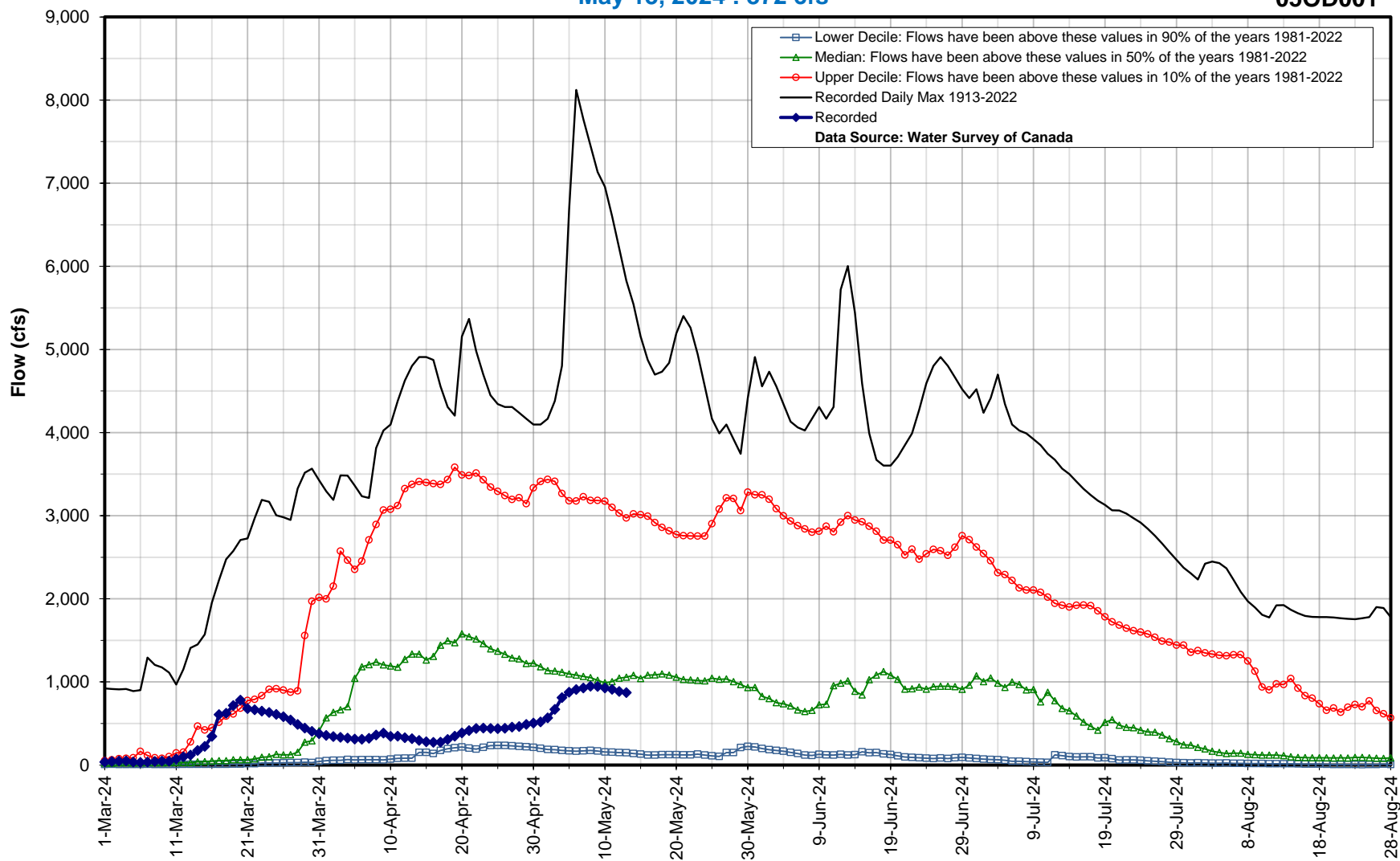


Hydrologic Forecast Centre - Manitoba Transportation and Infrastructure

Roseau River near Dominion City

May 13, 2024 : 872 cfs

05OD001



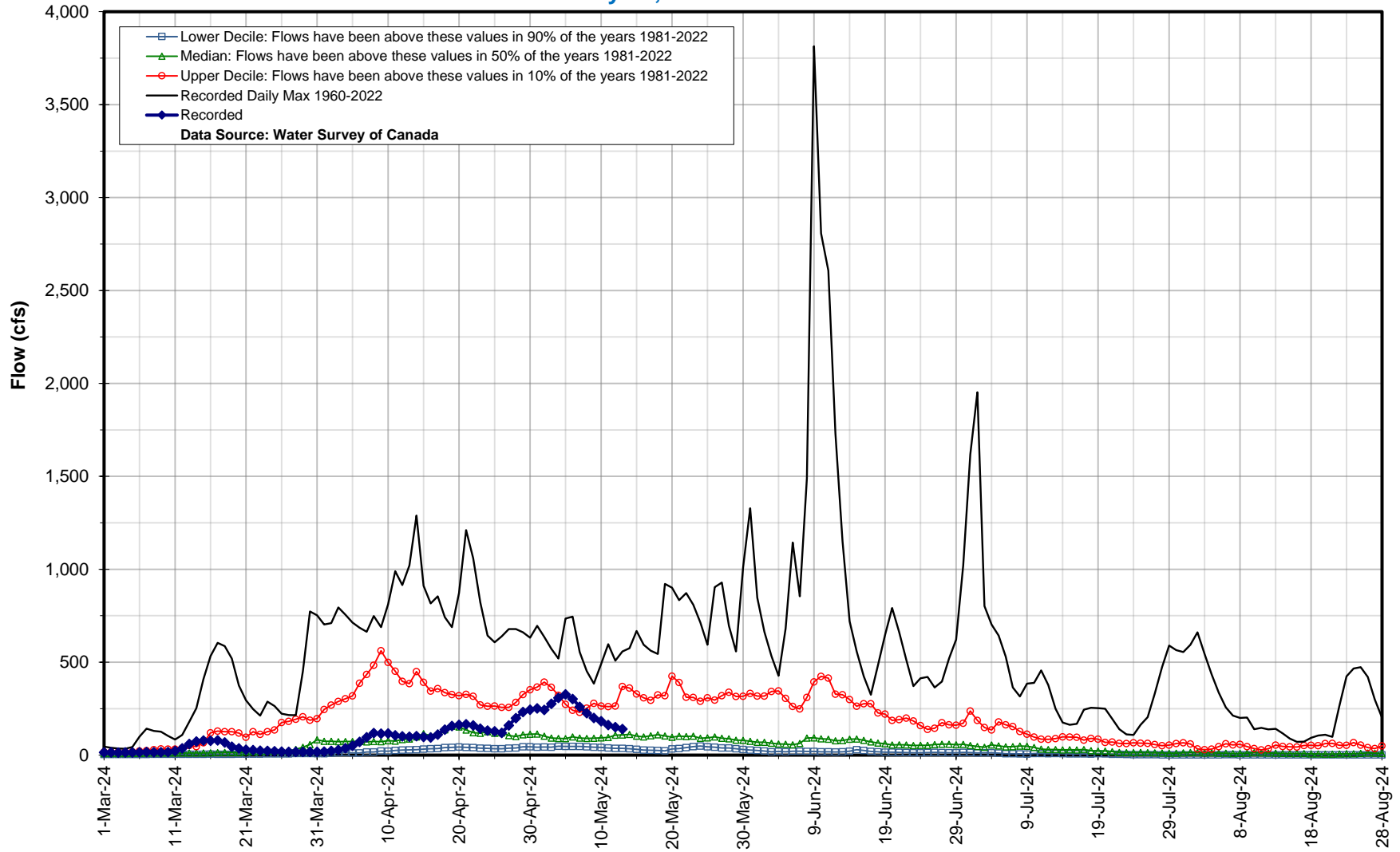
Lower Decile: Flows have been above these values in 90% of the years 1981-2022
Median: Flows have been above these values in 50% of the years 1981-2022
Upper Decile: Flows have been above these values in 10% of the years 1981-2022
Recorded Daily Max 1913-2022
Recorded
Data Source: Water Survey of Canada

Hydrologic Forecast Centre - Manitoba Transportation and Infrastructure

Rat River near Sundown

May 13, 2024 : 141 cfs

050E004



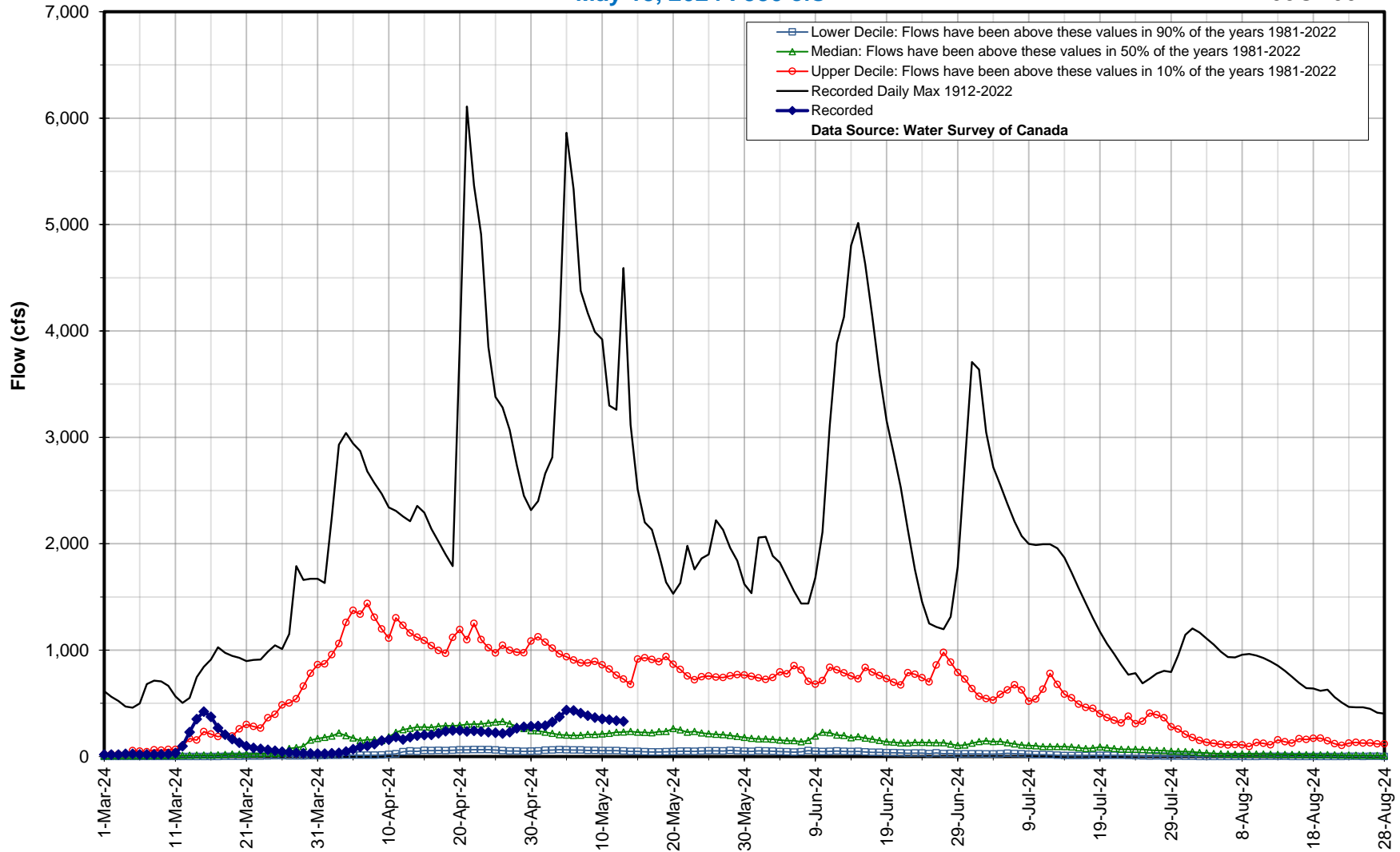
—□— Lower Decile: Flows have been above these values in 90% of the years 1981-2022
—△— Median: Flows have been above these values in 50% of the years 1981-2022
—○— Upper Decile: Flows have been above these values in 10% of the years 1981-2022
— Recorded Daily Max 1960-2022
—◆— Recorded
Data Source: Water Survey of Canada

Hydrologic Forecast Centre - Manitoba Transportation and Infrastructure

Rat River near Otterburne

May 13, 2024 : 330 cfs

05OE001



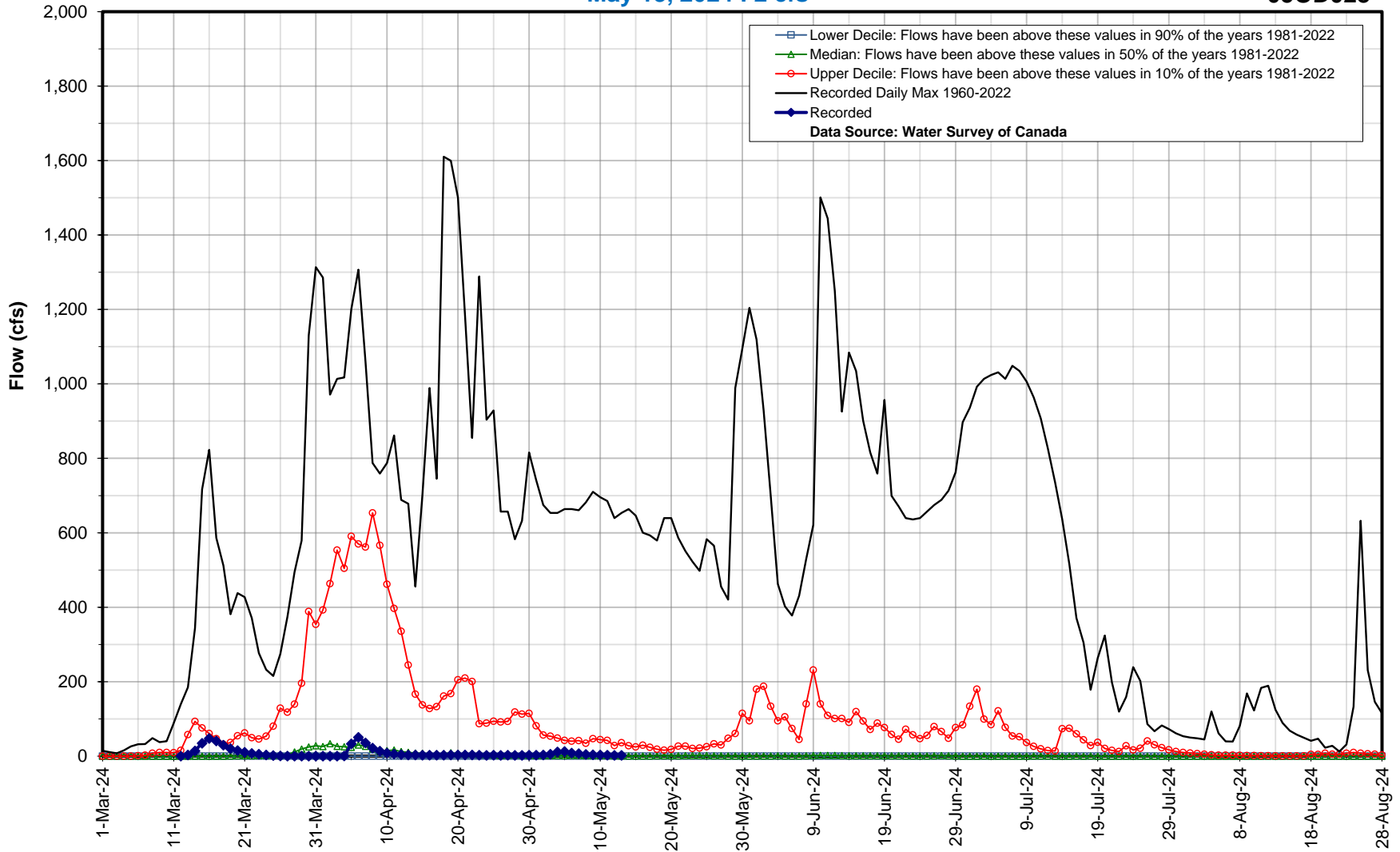
Lower Decile: Flows have been above these values in 90% of the years 1981-2022
Median: Flows have been above these values in 50% of the years 1981-2022
Upper Decile: Flows have been above these values in 10% of the years 1981-2022
Recorded Daily Max 1912-2022
Recorded
Data Source: Water Survey of Canada

Hydrologic Forecast Centre - Manitoba Transportation and Infrastructure

Main Drain near Dominion City

May 13, 2024 : 2 cfs

05OD028

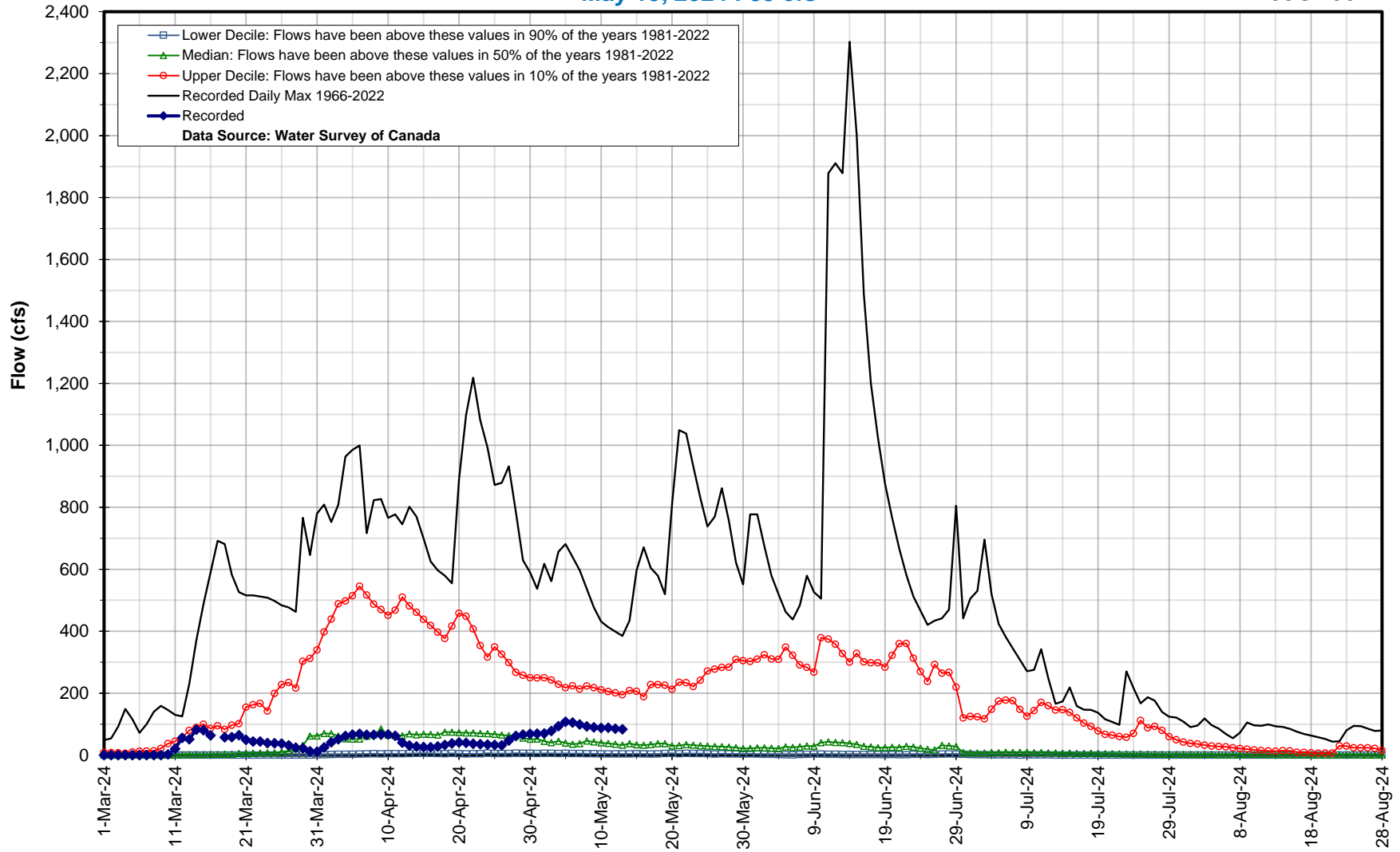


Hydrologic Forecast Centre - Manitoba Transportation and Infrastructure

Joubert Creek at St. Pierre-Jolys

May 13, 2024 : 83 cfs

05OE007

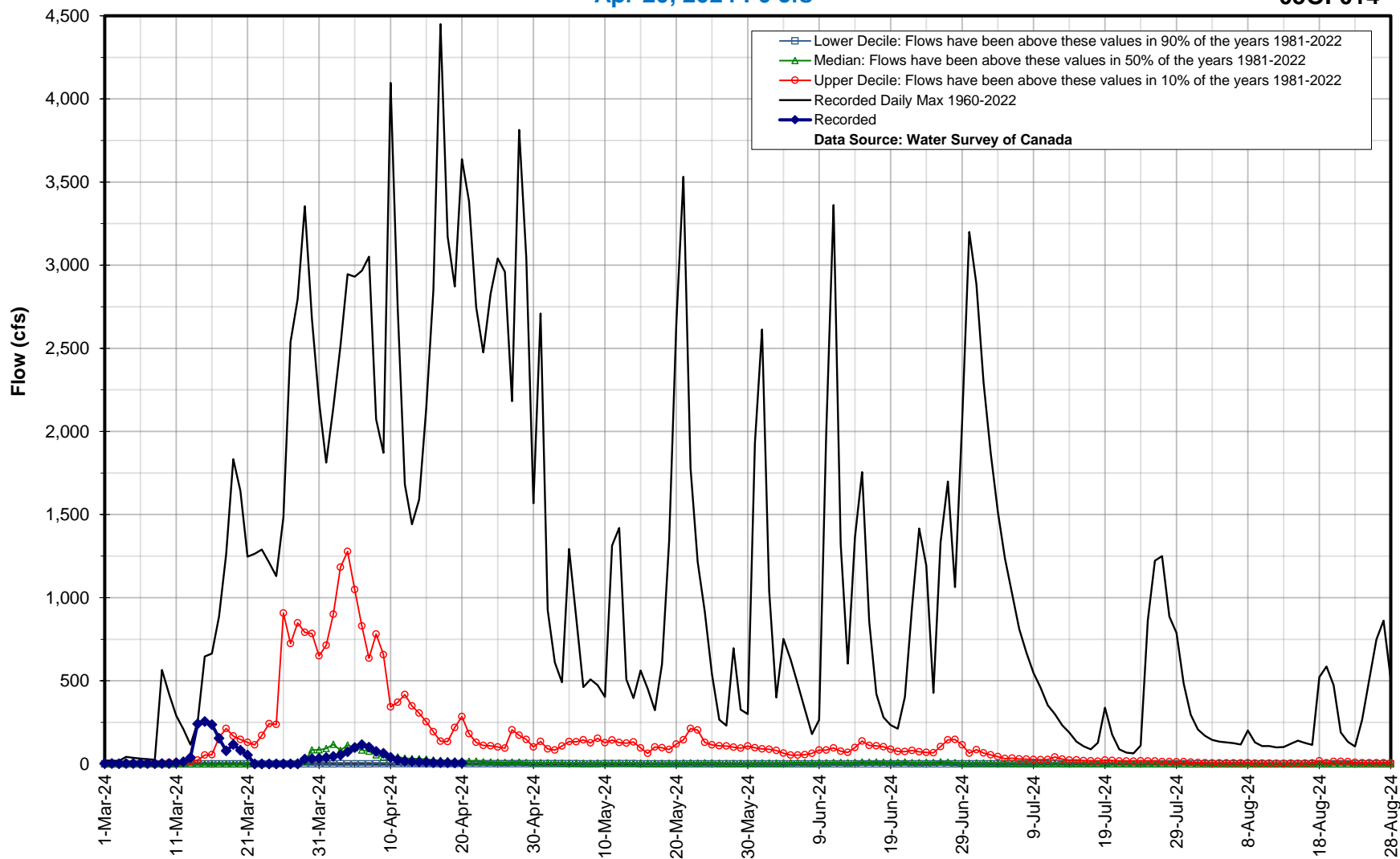


Hydrologic Forecast Centre - Manitoba Transportation and Infrastructure

Shannon Creek near Morris

Apr 20, 2024 : 6 cfs

05OF014

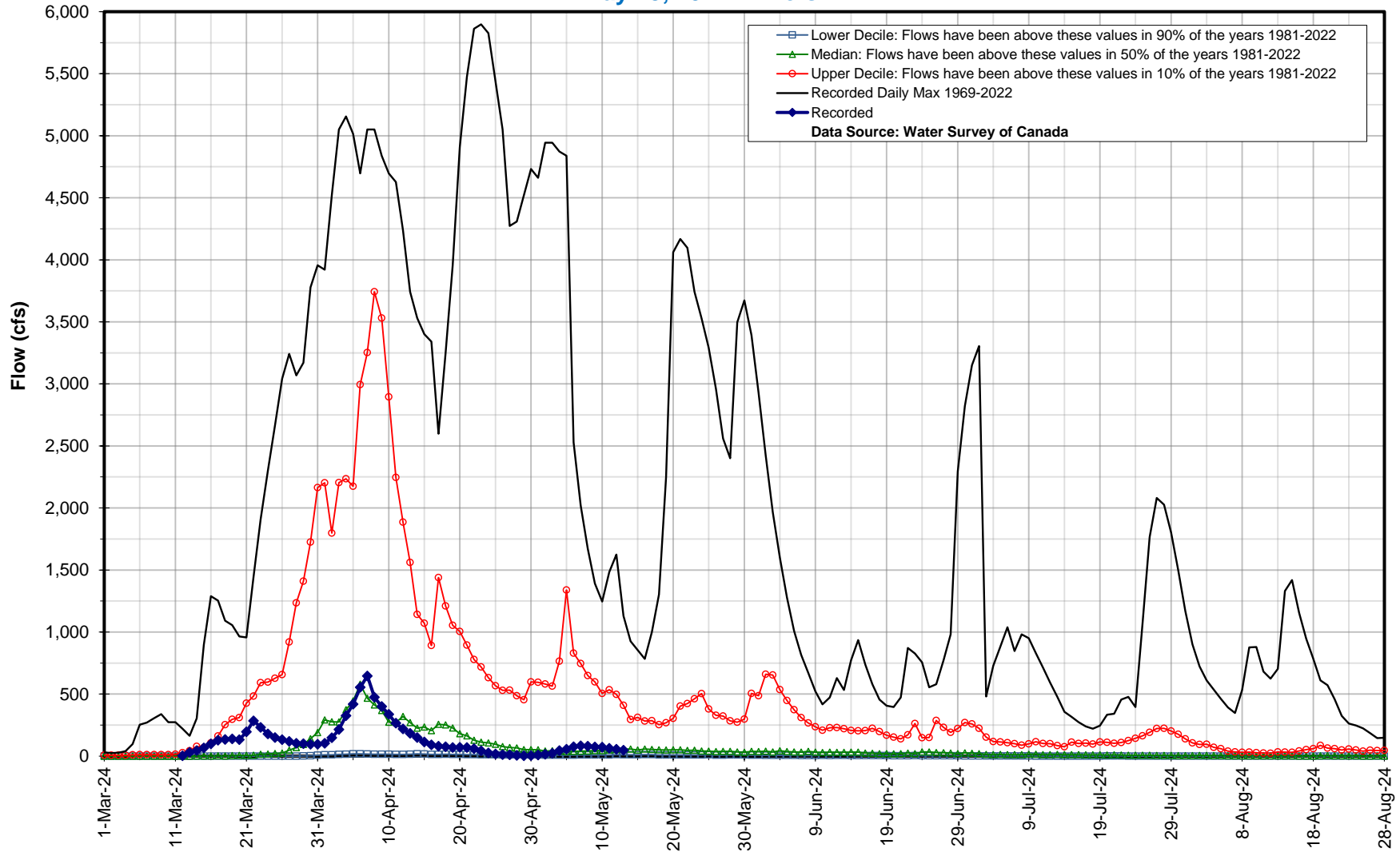


Hydrologic Forecast Centre - Manitoba Transportation and Infrastructure

Morris River near Rosenort

May 13, 2024 : 47 cfs

05OF020

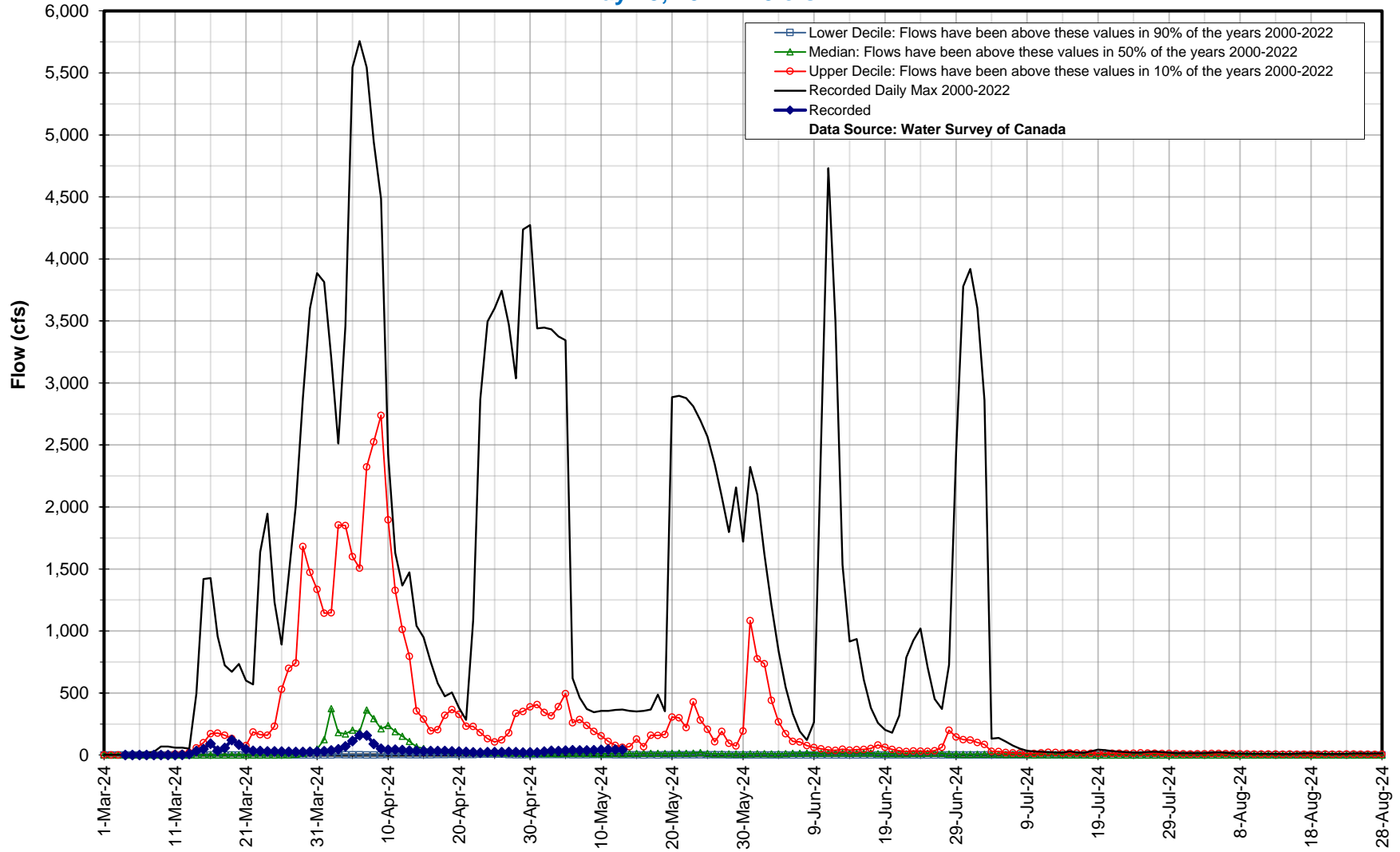


Hydrologic Forecast Centre - Manitoba Transportation and Infrastructure

Little Morris River near Rosenort

May 13, 2024 : 43 cfs

05OF024

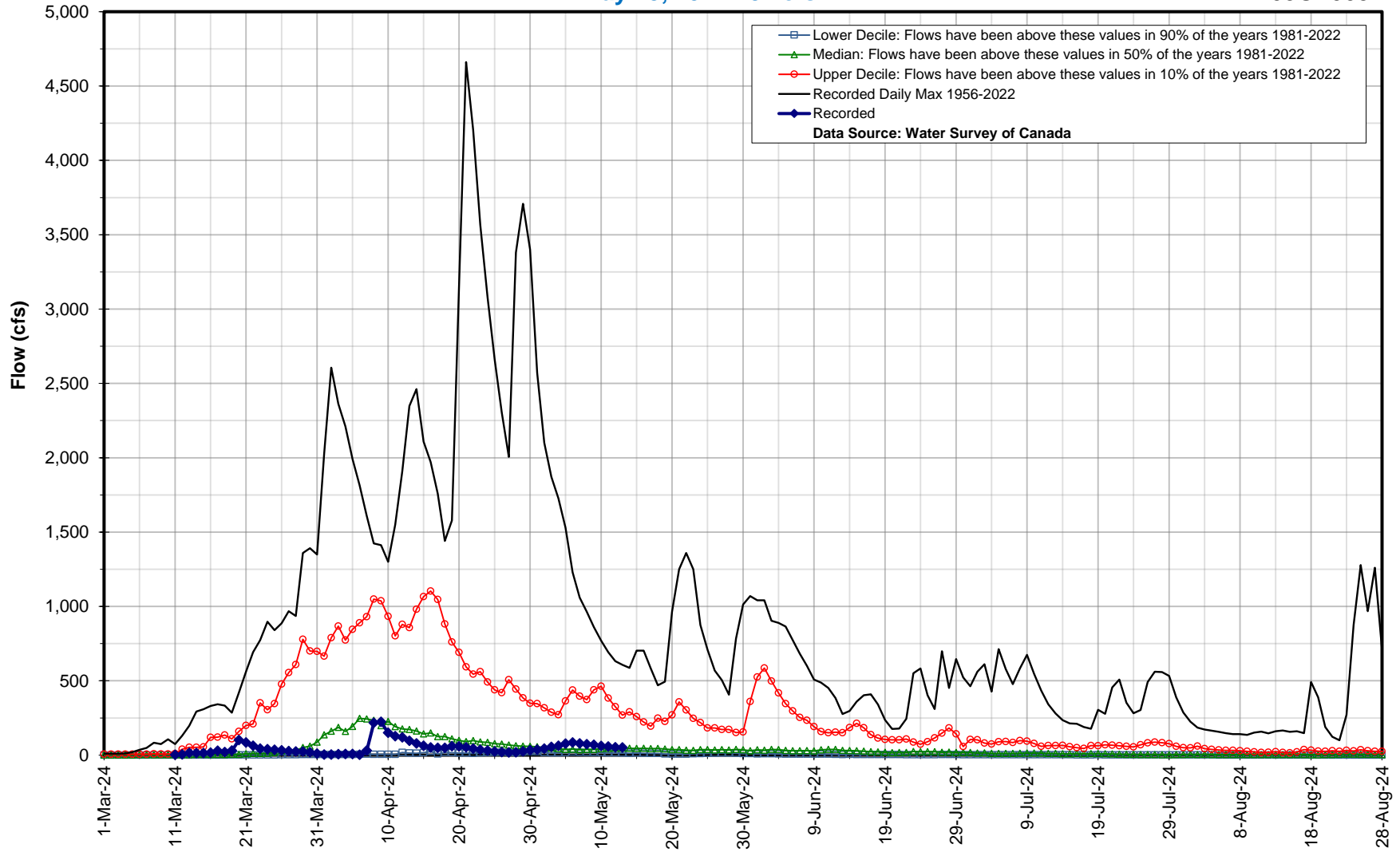


Hydrologic Forecast Centre - Manitoba Transportation and Infrastructure

Boyne River near Carman

May 13, 2024 : 51 cfs

05OF003



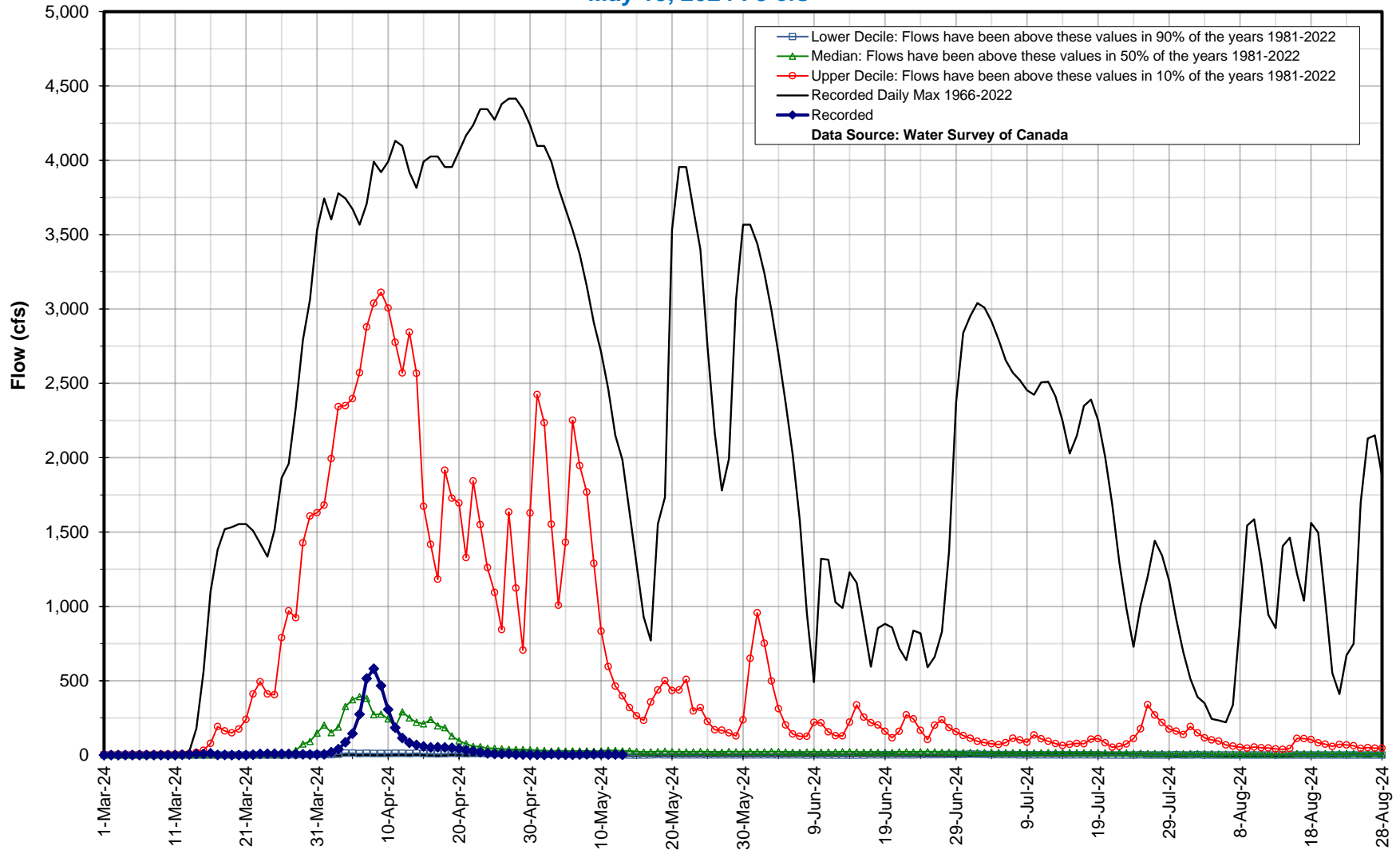
— Lower Decile: Flows have been above these values in 90% of the years 1981-2022
— Median: Flows have been above these values in 50% of the years 1981-2022
— Upper Decile: Flows have been above these values in 10% of the years 1981-2022
— Recorded Daily Max 1956-2022
— Recorded
Data Source: Water Survey of Canada

Hydrologic Forecast Centre - Manitoba Transportation and Infrastructure

La Salle River near Sanford

May 13, 2024 : 3 cfs

05OG001

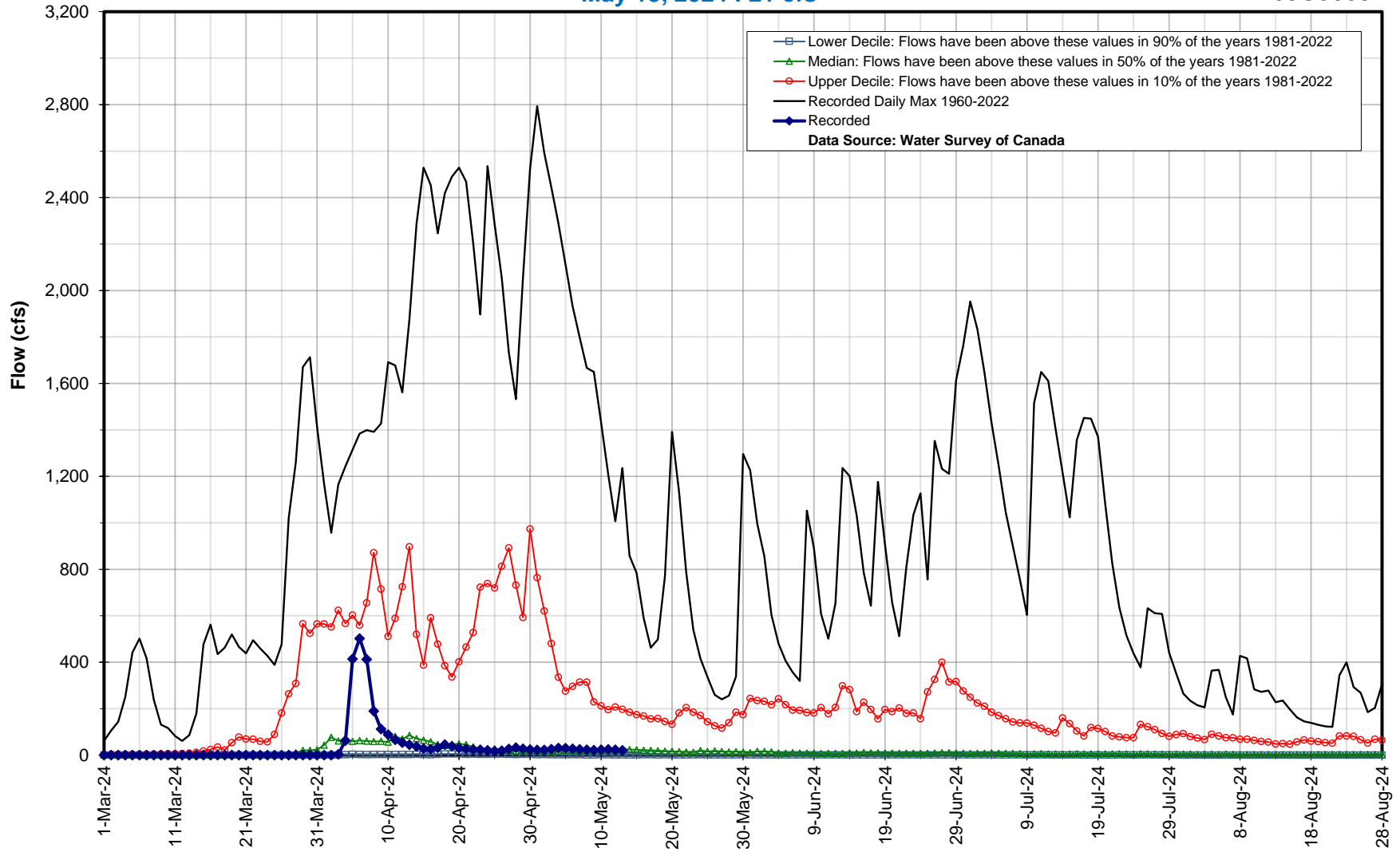


Hydrologic Forecast Centre - Manitoba Transportation and Infrastructure

Netley Creek near Petersfield

May 13, 2024 : 21 cfs

050J008



Legend:
- Lower Decile: Flows have been above these values in 90% of the years 1981-2022
- Median: Flows have been above these values in 50% of the years 1981-2022
- Upper Decile: Flows have been above these values in 10% of the years 1981-2022
- Recorded Daily Max 1960-2022
- Recorded
Data Source: Water Survey of Canada