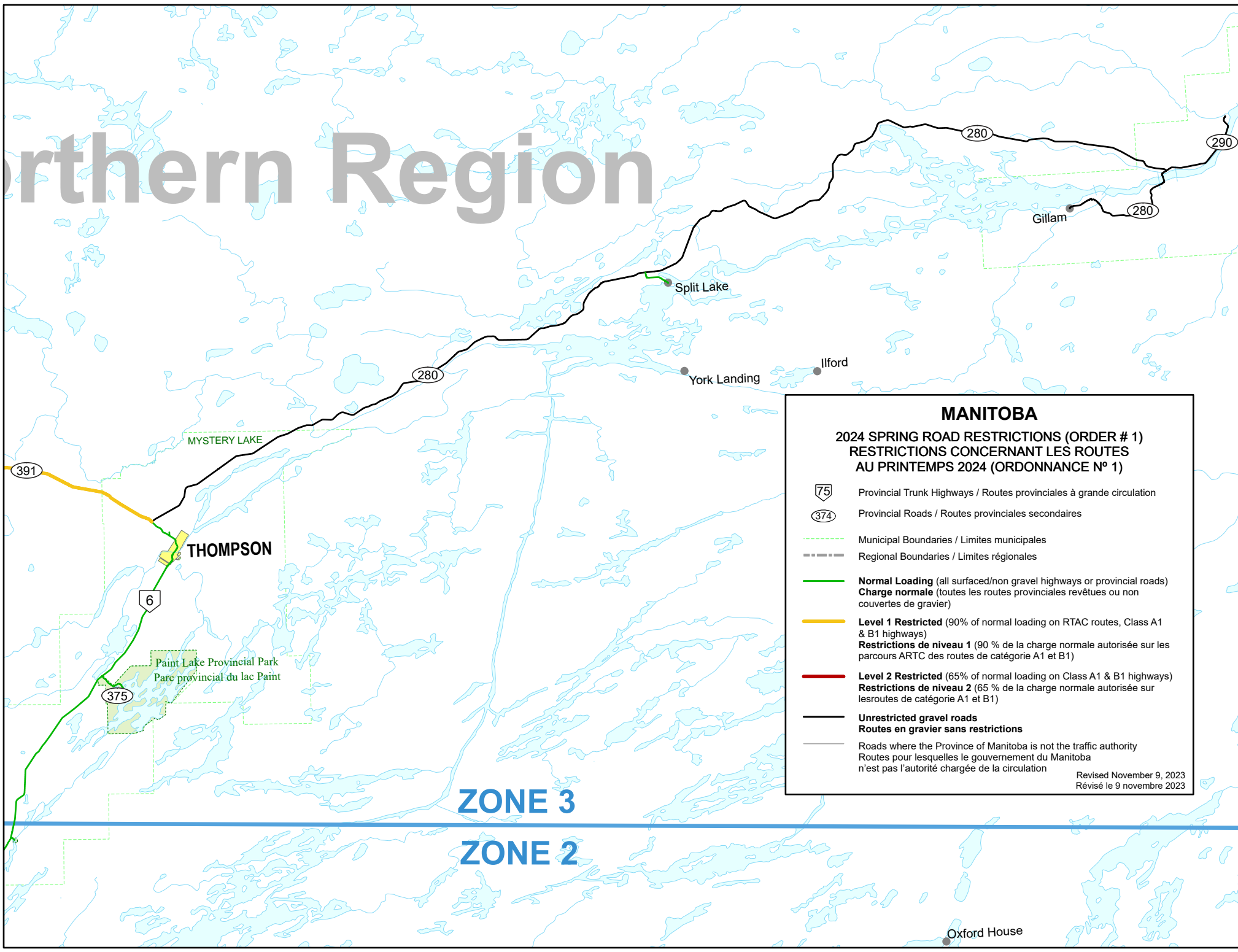
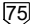










# orthern Region



**MANITOBA**

**2024 SPRING ROAD RESTRICTIONS (ORDER # 1)**  
**RESTRICTIONS CONCERNANT LES ROUTES**  
**AU PRINTEMPS 2024 (ORDONNANCE N° 1)**

-  Provincial Trunk Highways / Routes provinciales à grande circulation
-  Provincial Roads / Routes provinciales secondaires
-  Municipal Boundaries / Limites municipales
-  Regional Boundaries / Limites régionales
-  **Normal Loading** (all surfaced/non gravel highways or provincial roads)  
**Charge normale** (toutes les routes provinciales revêtues ou non couvertes de gravier)
-  **Level 1 Restricted** (90% of normal loading on RTAC routes, Class A1 & B1 highways)  
**Restrictions de niveau 1** (90 % de la charge normale autorisée sur les parcours ARTC des routes de catégorie A1 et B1)
-  **Level 2 Restricted** (65% of normal loading on Class A1 & B1 highways)  
**Restrictions de niveau 2** (65 % de la charge normale autorisée sur les routes de catégorie A1 et B1)
-  **Unrestricted gravel roads**  
**Routes en gravier sans restrictions**
-  Roads where the Province of Manitoba is not the traffic authority  
 Routes pour lesquelles le gouvernement du Manitoba n'est pas l'autorité chargée de la circulation

Revised November 9, 2023  
Révisé le 9 novembre 2023

**ZONE 3**

**ZONE 2**