

Bipole III Transmission Project

Project Infrastructure

- Final Preferred Route
- Planning Section Division
- Local Study Area

Infrastructure

- Converter Station
- Generating Station
- Bipole I and II
- Transmission Line

Access

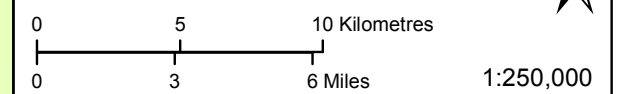
- 12 Proposed Access Route
- 12RT Proposed Access Point*
- 12 Abandoned Rail crossing
- 12 Rail crossing
- 12 Transmission Line Crossing
- 12 Major Stream Crossing (Not yet identified)

* R=Access point along existing highway
T= Access point along Bipole III Final Preferred Route

Landbase

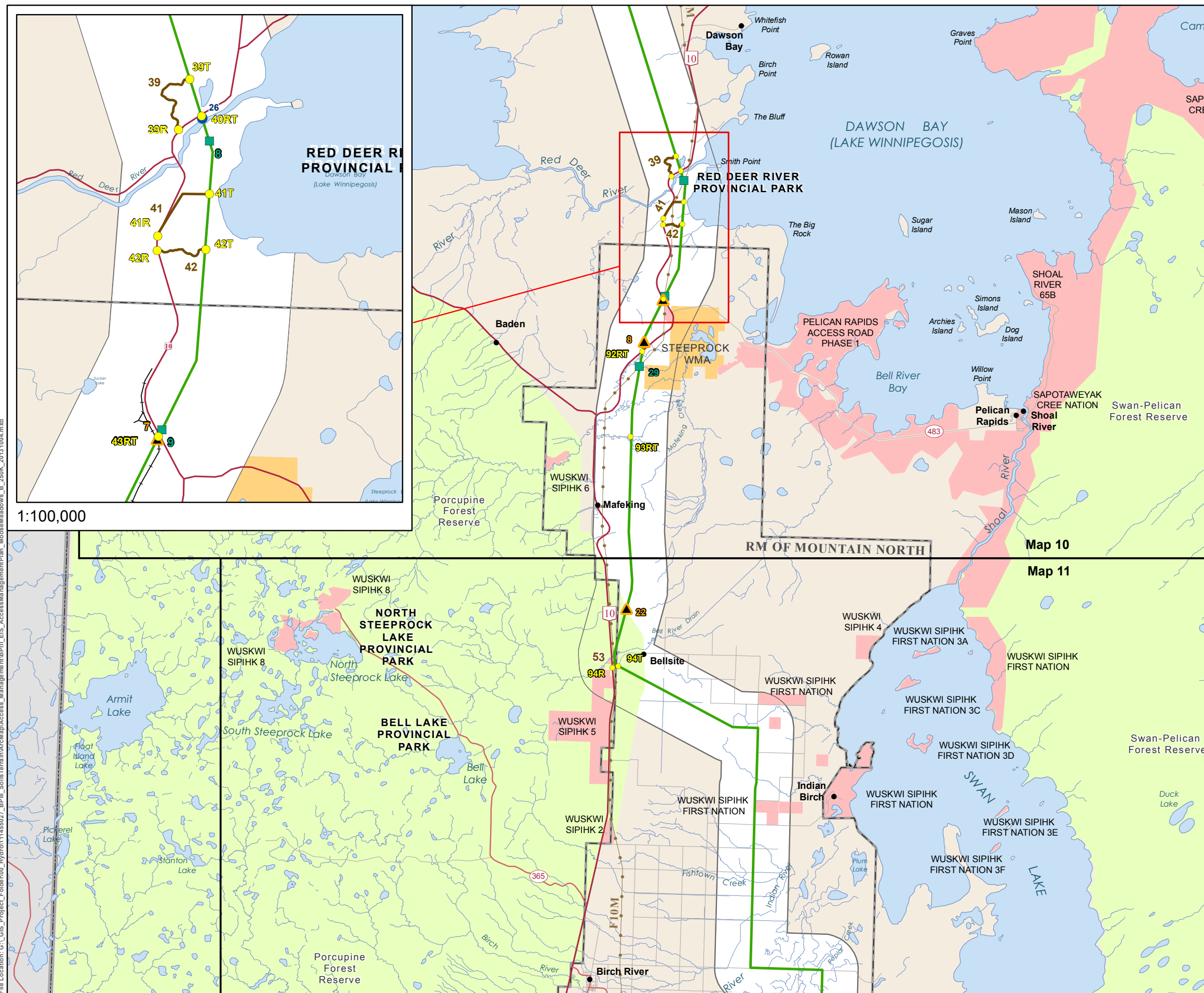
- Community
- City / Town
- First Nation
- National/Provincial Park
- Rural Municipality
- Wildlife Management Area

Coordinate System: UTM Zone 14N NAD83
Data Source: MBHydro, Stantec, ProvMB
Date Created: October 08, 2013



Construction Access Opportunities

File Location: G:\GIS\Project_Folder\00_Hydro\11455027_BP111_Soils\Terrain\MapAccess_Management\BP111_EIS_AccessManagementPlan_Moose Meadows_B_250K_20131004.mxd



1:100,000

G:\GIS\Project_Folder\00_Hydro\11455027_BP\III_Soils\Terrain\DD\Construction Access Re-Routes

STREAM CROSSINGS

| ID | Easting | Northing | Waterbody Name | Access Notes and Comments | Water Width (m) | Channel Width (m) | Bank Stability (Right Bank) | Bank Stability (Left Bank) | Substrate |
|----|---------|----------|----------------|---------------------------|-----------------|-------------------|-----------------------------|----------------------------|-----------|
|----|---------|----------|----------------|---------------------------|-----------------|-------------------|-----------------------------|----------------------------|-----------|

Stream crossings with constraints have not yet been identified. Ground truthing will occur prior to construction.

PROPOSED ACCESS POINTS

| ID | Easting | Northing | Comments | Access Type | Distance to Previous Access Point Along ROW | Distance to Next Access Point Along ROW | Distance to Previous Access Point Along Road | Distance to Next Access Point Along Road |
|------|---------|----------|--|-------------|---|---|--|--|
| 92RT | 360382 | 5849530 | PTH 10 crossing | Road/FPR | 3.7km | 5.8km | 4.6km | 9.5km |
| 93RT | 359605 | 5843781 | Access route along existing gravel road intersecting with PTH 10 | Road | 5.8km | 15.7km | 9.5km | 18.7km |
| 94R | 358383 | 5828201 | Access route 53 along existing road intersecting with PTH 10 | Road | NA | NA | 18.7km | 45km |
| 94T | 358757 | 5828313 | Access route 53 along existing road intersecting with PTH 10 | FPR | 16km | 40km | NA | NA |

PROPOSED ACCESS ROUTES

| ID | Easting | Northing | Description | Rationale | Issues | Access Length |
|----|---------|----------|--------------------------------|---------------|--------|----------------|
| 53 | NA | NA | Existing mile road from PTH 10 | Existing road | none | 400m to PTH 10 |

TRANSMISSION LINE CROSSINGS

| ID | Easting | Northing | T-Line Name |
|----|---------|----------|---------------------------------------|
| 29 | 360199 | 5848523 | Overflowing River to Minitonas (F10M) |

RAILWAY CROSSINGS

| ID | Easting | Northing | Status |
|----|---------|----------|-----------|
| 22 | 359333 | 5832182 | Abandoned |

Bipole III Transmission Project

Project Infrastructure

- Final Preferred Route
- Planning Segment Division
- Local Study Area

Infrastructure

- Converter Station
- Generating Station
- Bipole I and II
- Transmission Line

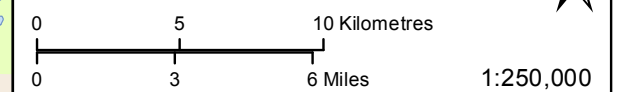
Access

- 12 Proposed Access Route
 - 12RT Proposed Access Point*
 - 12 Abandoned Rail crossing
 - 12 Rail crossing
 - 12 Transmission Line Crossing
 - 12 Major Stream Crossing
- * R=Access point along existing highway
T= Access point along Bipole III Final Preferred Route

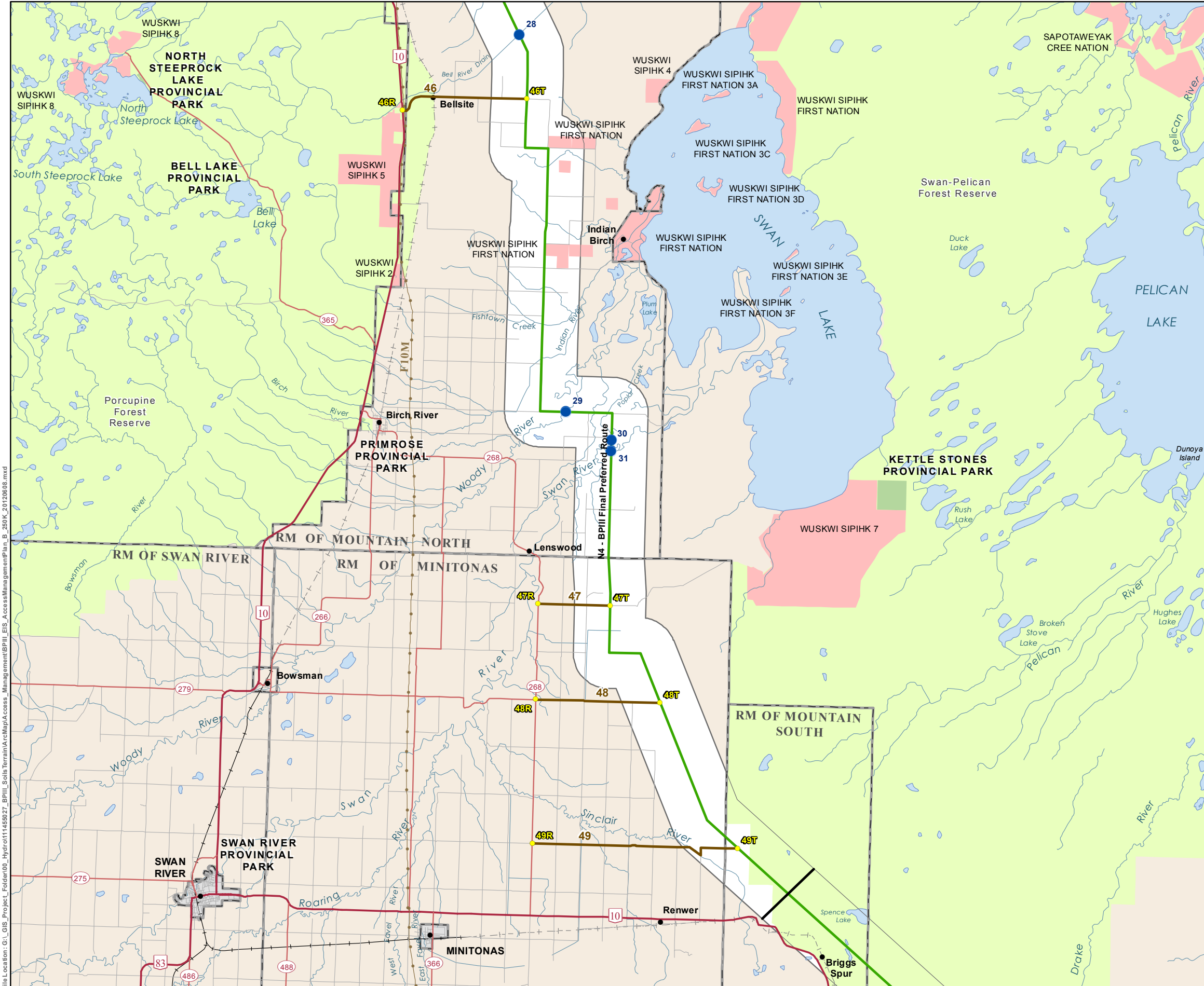
Landbase

- Community
- City / Town
- First Nation
- National/Provincial Park
- Rural Municipality
- Wildlife Management Area

Coordinate System: UTM Zone 14N NAD83
Data Source: MBHydro, Stantec, ProvMB
Date Created: October 08, 2013



Construction Access Opportunities



File Location: G:_Projec_ Folder\05_Hydro\1145927_BP111_Soils Terrain\ArcMap\Access_Management\BP111_EIS_Access_Management\Plan_B_250K_20120808.mxd

C:\GIS\Project_Folder\0221-Hydro\11255079_BPIII_Soils\DD\BPIII\AccessDatabase\Tables_2010412.mxd

| STREAM CROSSINGS | | | | | | | | | |
|------------------|---------|----------|-------------------------|--|-----------------|-------------------|-----------------------------|----------------------------|-----------|
| ID | Easting | Northing | Waterbody Name | Access Notes and Comments | Water Width (m) | Channel Width (m) | Bank Stability (Right Bank) | Bank Stability (Left Bank) | Substrate |
| 28 | 366290 | 5833352 | Bell River Drain | | 7 | | 100 | 100 | |
| 29 | 369423 | 5807910 | Woody River | 2m banks, steep and unstable | 19 | | 40 | 40 | Fines |
| 30 | 372497 | 5805993 | Swan River (oxbow lake) | | | | 100 | 100 | |
| 31 | 372476 | 5805232 | Swan River | Not assessed at crossing due to access | 34 | 45 | 40 | 40 | Fines |

| PROPOSED ACCESS POINTS | | | | | | | | | |
|------------------------|---------|----------|--|-------------|---|---|--|--|--|
| ID | Easting | Northing | Comments | Access Type | Distance to Previous Access Point Along ROW | Distance to Next Access Point Along ROW | Distance to Previous Access Point Along Road | Distance to Next Access Point Along Road | |
| 46R | 358391 | 5828251 | Access point 46 along existing road intersecting with PTH 10 | Road | NA | NA | 19km | 45km | |
| 46T | 366766 | 5829013 | Access point 46 along existing road intersecting with PTH 10 | ROW | 16km | 40km | NA | NA | |
| 47R | 367558 | 5794965 | Access point 47 along existing road intersecting with PR 268 | Road | NA | NA | 45km | 6km | |
| 47T | 372407 | 5794830 | Access point 47 along existing road intersecting with PR 268 | ROW | 40km | 8.7km | NA | NA | |
| 48R | 367388 | 5788507 | Access point 48 along existing road intersecting with PR 268 | Road | NA | NA | 6km | 9.5km | |
| 48T | 375759 | 5788262 | Access point 48 along existing road intersecting with PR 268 | ROW | 8.7km | 11.3km | NA | NA | |
| 49R | 367151 | 5778786 | Access point 49 along existing road intersecting with PR 268 | Road | NA | NA | 9.5km | 43km | |
| 49T | 381025 | 5778427 | Access point 49 along existing road intersecting with PR 268 | ROW | 11.3km | 22km | NA | NA | |

| PROPOSED ACCESS ROUTES | | | | | | |
|------------------------|--|---|---------------------------|-------------------|------------------|--|
| ID | | Description | Rationale | Issues | Access Length | |
| 46 | | Access route along existing mile road from PTH 10 | Bellsite RM road - gravel | | 8.9km to PTH 10 | |
| 47 | | Access route along existing mile road from PR 268 | RM road - gravel | | 4.8km to PR 268 | |
| 48 | | Access route along existing mile road from PR 268 | RM road - gravel | | 8.4km to PR 268 | |
| 49 | | Access route along existing mile road from PR 268 | Mostly RM road | 2 miles no gravel | 14.6km to PR 268 | |

Note: Existing mile road crossings have not been identified for Agro-Manitoba

* Disclaimer: Municipal Roads to be used as access points on a "as required" basis on maps 11 thru 17



28-Bell River Drain



29-Woody River



30-Oxbow lake of Swan River



31-Swan River

Bipole III Transmission Project

Project Infrastructure

- Final Preferred Route
- Planning Segment Division
- Local Study Area

Infrastructure

- Converter Station
- Generating Station
- Bipole I and II
- Transmission Line

Access

- 12 Proposed Access Route
 - 12RT Proposed Access Point*
 - 12 Abandoned Rail crossing
 - 12 Rail crossing
 - 12 Transmission Line Crossing
 - 12 Major Stream Crossing
- * R=Access point along existing highway
T= Access point along Bipole III Final Preferred Route

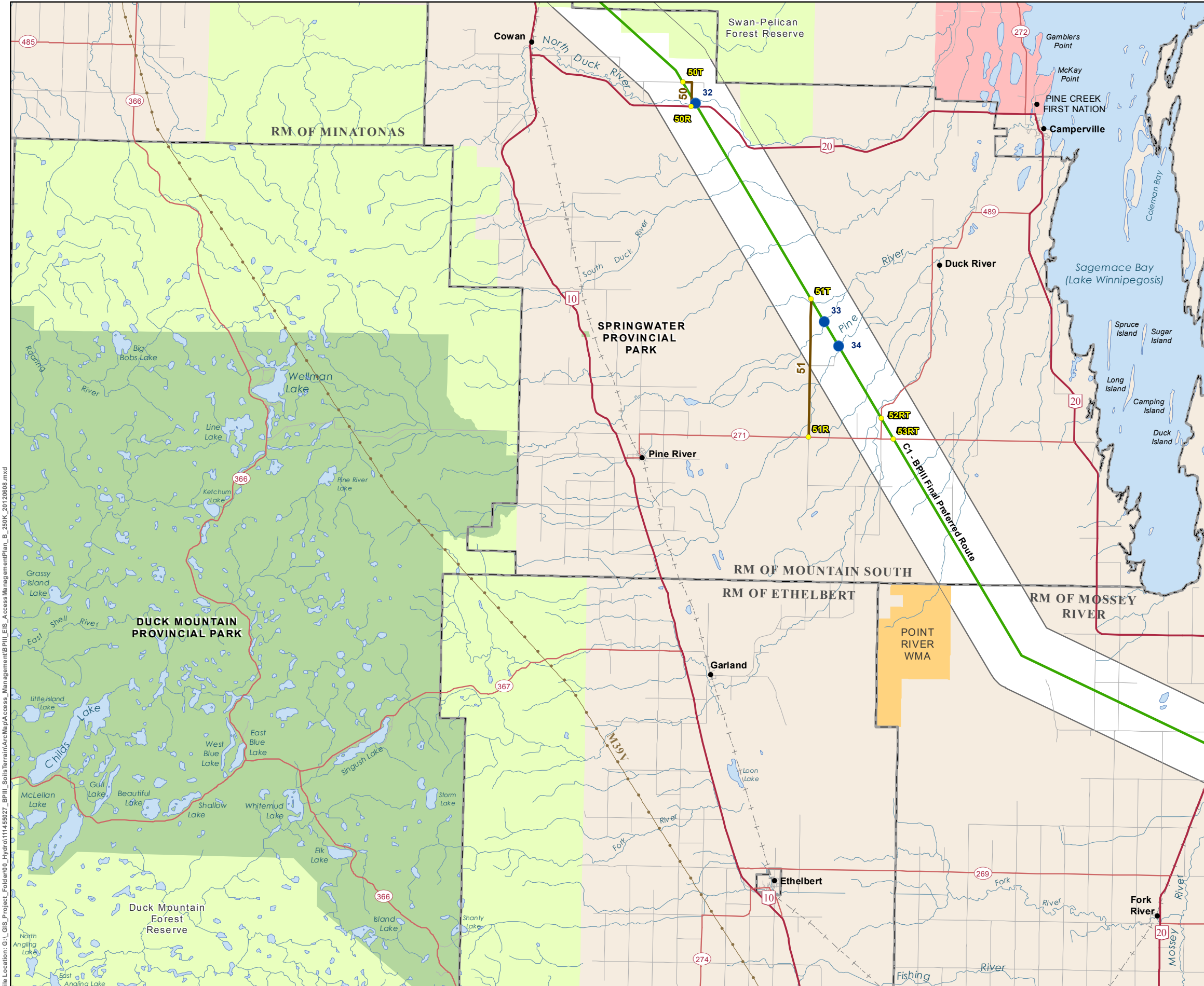
Landbase

- Community
- City / Town
- First Nation
- National/Provincial Park
- Rural Municipality
- Wildlife Management Area

Coordinate System: UTM Zone 14N NAD83
Data Source: MBHydro, Stantec, ProvMB
Date Created: October 08, 2013



Construction Access Opportunities



File Location: G:\GIS_Projects\Folder002_Hydro\11455927_BPHI1_Soils_Terrain\ArcMap\Access_Management\BPHI1_EIS_Access_Management\Plan_B_250K_20120808.mxd

G:\GIS_Project_Folder\0221-Hydro\11255079_BPIII_Soils\IDD\BPIII\AccessDatabase\Tables_2010412_indd

| STREAM CROSSINGS | | | | | | | | | |
|------------------|---------|----------|-----------------------|--|-----------------|-------------------|-----------------------------|----------------------------|--------------------------------|
| ID | Easting | Northing | Waterbody Name | Access Notes and Comments | Water Width (m) | Channel Width (m) | Bank Stability (Right Bank) | Bank Stability (Left Bank) | Substrate |
| 32 | 398019 | 5762042 | North Duck River | 4.5 and 2.0m high steep unstable | 13 | 18 | 50 | 40 | Fines, gravel, cobble, boulder |
| 33 | 406694 | 5747339 | Pine River Crossing 1 | Not assessed at crossing due to access | 7 | | 90 | 100 | |
| 34 | 407689 | 5745653 | Pine River Crossing 2 | Not assessed at crossing due to access | 7 | | 80 | 90 | |

| PROPOSED ACCESS POINTS | | | | | | | | | |
|------------------------|---------|----------|--|-------------|---|---|--|--|--|
| ID | Easting | Northing | Comments | Access Type | Distance to Previous Access Point Along ROW | Distance to Next Access Point Along ROW | Distance to Previous Access Point Along Road | Distance to Next Access Point Along Road | |
| 50R | 397725 | 5761862 | Access point 50 along existing road intersecting with PTH 20 | Road | NA | NA | 43km | 57km | |
| 50T | 397166 | 5763489 | Access point 50 along existing road intersecting with PTH 20 | ROW | 22km | 17km | NA | NA | |
| 51R | 405651 | 5739553 | Access point 51 along existing road intersecting with PR 271 | Road | NA | NA | 57km | 6.2km | |
| 51T | 405814 | 5748832 | Access point 51 along existing road intersecting with PR 271 | ROW | 17km | 9.3km | NA | NA | |
| 52RT | 410551 | 5740802 | PR 489 crossing | Road/ROW | 9.3km | 1.7km | 6.2km | 2.3km | |
| 53RT | 411371 | 5739413 | PR 271 crossing | Road/ROW | 1.7km | 32km | 2.3km | 43km | |

| PROPOSED ACCESS ROUTES | | | | | | |
|------------------------|--|---|---------------|--------|-----------------|--|
| ID | | Description | Rationale | Issues | Access Length | |
| 50 | | Access route along existing mile road from PTH 20 | Existing road | | 2.2km to PTH 20 | |
| 51 | | Access route along existing mile road from PR 271 | Existing road | | 9.3km to PR 271 | |

Note: Existing mile road crossings have not been identified for Agro-Manitoba

* Disclaimer: Municipal roads may be used for access as required



32-North Duck River



33-Pine River Crossing 1



34-Pine River crossing 2

Bipole III Transmission Project

Project Infrastructure

- Final Preferred Route
- Planning Segment Division
- Local Study Area

Infrastructure

- Converter Station
- Generating Station
- Bipole I and II
- Transmission Line

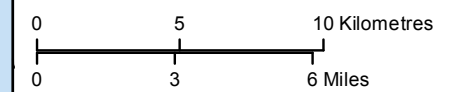
Access

- Proposed Access Route
 - Proposed Access Point*
 - Abandoned Rail crossing
 - Rail crossing
 - Transmission Line Crossing
 - Major Stream Crossing
- * R=Access point along existing highway
T=Access point along Bipole III Final Preferred Route

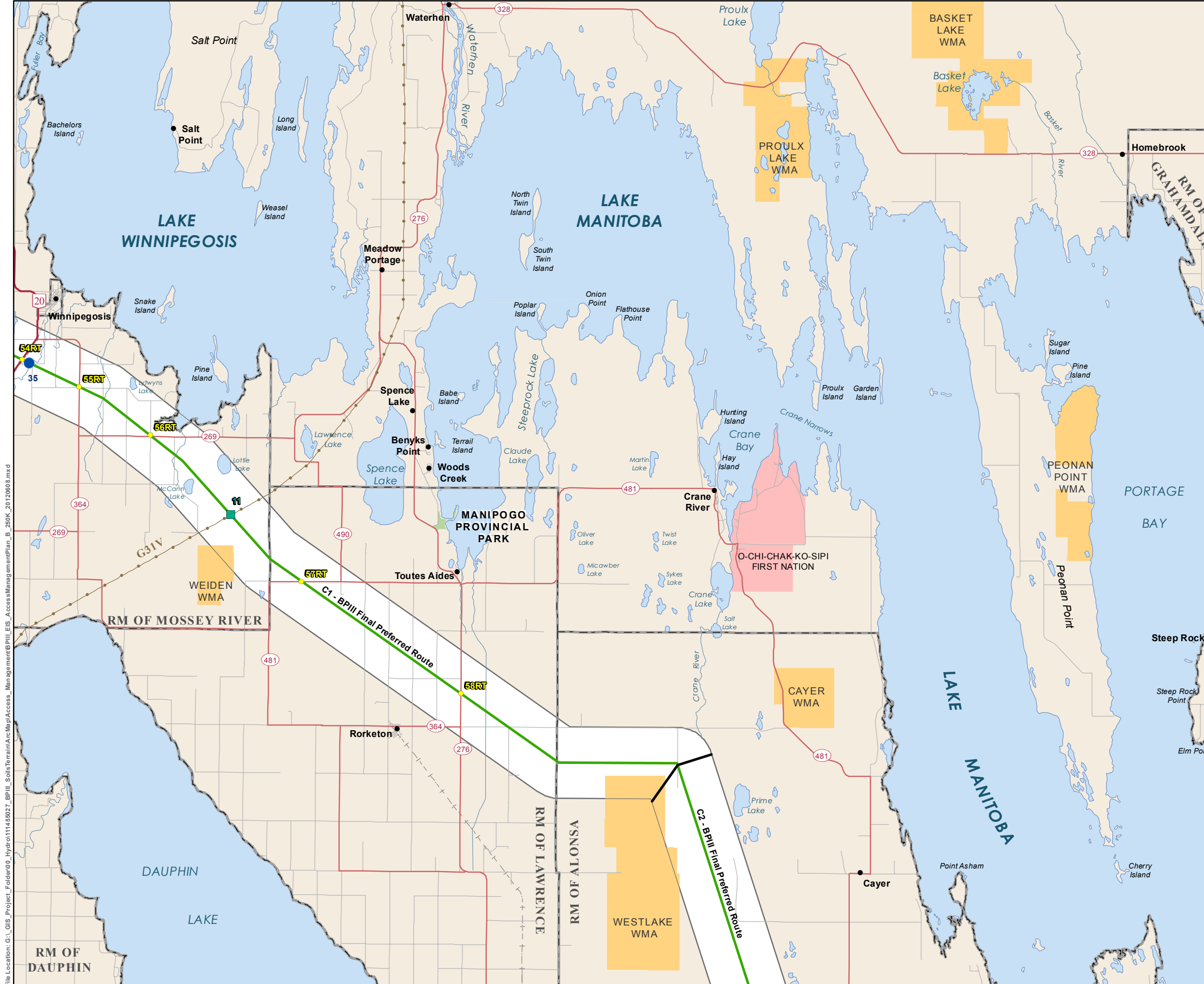
Landbase

- Community
- City / Town
- First Nation
- National/Provincial Park
- Rural Municipality
- Wildlife Management Area

Coordinate System: UTM Zone 14N NAD83
Data Source: MBHydro, Stantec, ProvMB
Date Created: October 08, 2013



Construction Access Opportunities



File Location: G:\GIS_Projects\Folder05_Hydro\11445927_BPIII_SoilsToRail\ArcMap\Access_Management\BPIII_EIS_AccessManagementPlan_B_250K_20120808.mxd

G:\GIS_Project_Folder\0221-Hydro\11255079_BPIII_Soils\DD\BPIII\AccessDatabase\Tables_2010412.indd

| STREAM CROSSINGS | | | | | | | | | |
|------------------|---------|----------|----------------|-------------------------------|-----------------|-------------------|-----------------------------|----------------------------|-----------|
| ID | Easting | Northing | Waterbody Name | Access Notes and Comments | Water Width (m) | Channel Width (m) | Bank Stability (Right Bank) | Bank Stability (Left Bank) | Substrate |
| 35 | 434144 | 5718019 | Mossy River | 2.5 and 3.5m high steep banks | 18 | | 100 | 100 | Fines |

| PROPOSED ACCESS POINTS | | | | | | | | |
|------------------------|---------|----------|-----------------|-------------|---|---|--|--|
| ID | Easting | Northing | Comments | Access Type | Distance to Previous Access Point Along ROW | Distance to Next Access Point Along ROW | Distance to Previous Access Point Along Road | Distance to Next Access Point Along Road |
| 54RT | 433675 | 5718251 | PTH 20 crossing | Road/ROW | 32km | 4.2km | 43km | 7.7km |
| 55RT | 437535 | 5716406 | PR 364 crossing | Road/ROW | 4.2km | 6km | 7.7km | 8.2km |
| 56RT | 442339 | 5713113 | PR 269 crossing | Road/ROW | 6km | 14km | 8.2km | 25km |
| 57RT | 452561 | 5703240 | PR 481 crossing | Road/ROW | 14km | 13km | 25km | 18km |
| 58RT | 463337 | 5695648 | PR 276 crossing | Road/ROW | 13km | 50km | 18km | 72km |

| TRANSMISSION LINE CROSSINGS | | | |
|-----------------------------|---------|----------|----------------------------|
| ID | Easting | Northing | T-Line Name |
| 11 | 447769 | 5707737 | Grand Rapids to Vermillion |

Note: Existing mile road crossings have not been identified for Agro-Manitoba
 * Disclaimer: Municipal roads may be used for access as required



North South Consultants Inc.

35-Mossy River