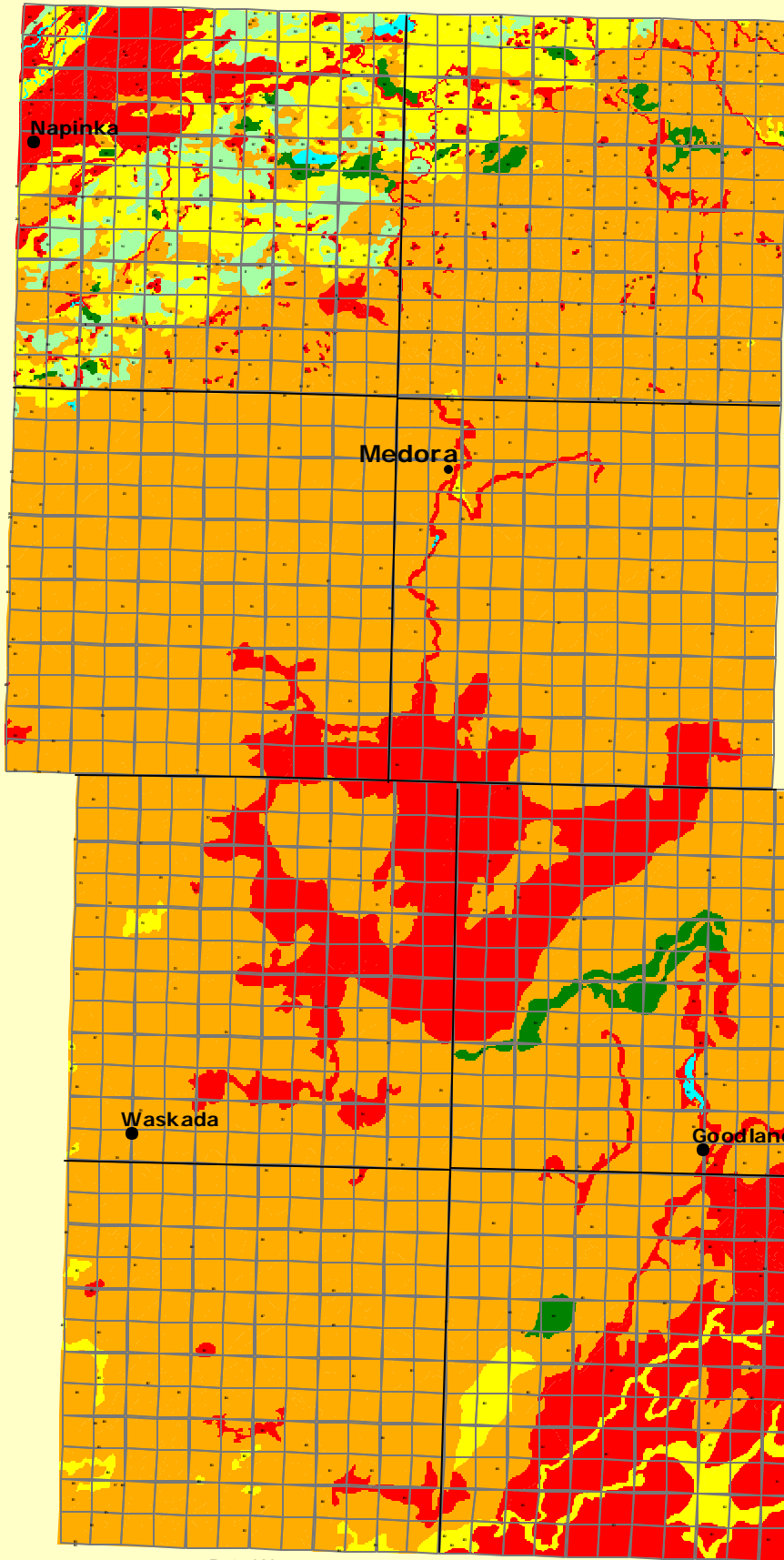

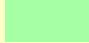







Rural Municipality of Brenda

Soil Suitability for Irrigated Potato Production



Soil Suitability Classes for Irrigated Potato Production

| | Area (ha) | % of RM |
|--|-----------|---------|
|  Class 1 | 999 | 1.3 |
|  Class 2 | 1517 | 2.0 |
|  Class 3 | 5120 | 6.6 |
|  Class 4 | 54857 | 70.6 |
|  Class 5 | 15091 | 19.4 |
|  water | | |
|  unclassified | | |

Universal Transverse Mercator (NAD27) Projection
 Derived from Detail Soil Information
 (1:20 000, 1:40 000)



Tp 2

Tp 1

Agriculture Resources Section
 Soils and Crops Branch
 Manitoba Agriculture and Food

subject to revision

R 25W

R 24W