

Hydrologic Forecast Centre - Manitoba Transportation and Infrastructure

Eastern Manitoba Flows and Levels			
Last Reading Date	Hydrometric Stations	Flow (cfs)	Level (feet)
3-Jul-25	Whitemouth River near Whitemouth	63	
3-Jul-25	Bloodvein River above Bloodvein Bay	977	
3-Jul-25	Winnipeg River at Lac du Bonnet		836.03
3-Jul-25	Whiteshell River at Outlet of Jessica Lake	15	
3-Jul-25	Birch River near Prawda	7	
3-Jul-25	Brokenhead River near Beausejour	28	
3-Jul-25	Devils Creek near Libau	1	

Note: Please go to the next pages to view the historical and current flow hydrographs for these rivers

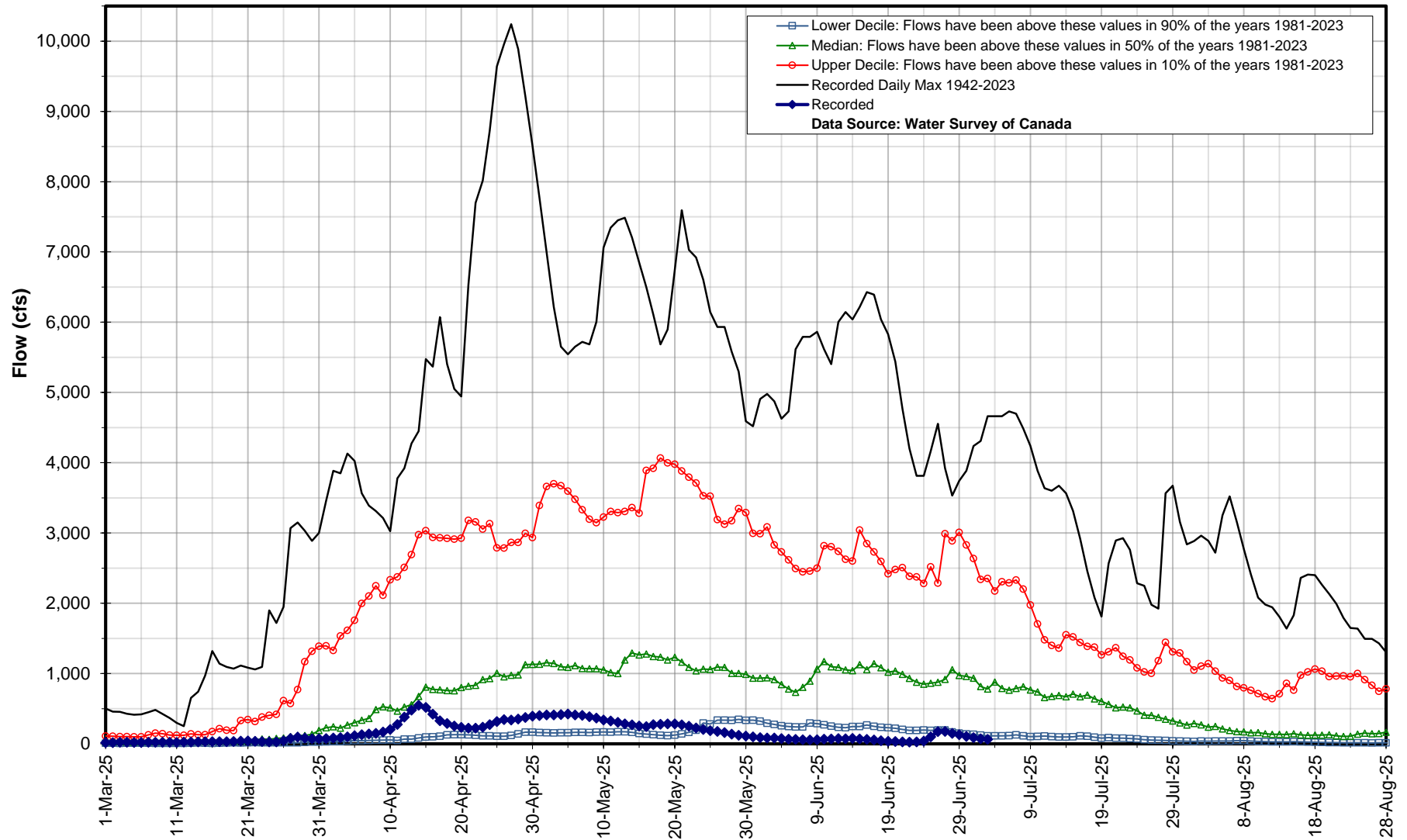
* Real-time flow and level data is provisional and subject to change. Data provided by Water Survey of Canada/Environment Canada

Hydrologic Forecast Centre - Manitoba Transportation and Infrastructure

Whitemouth River near Whitemouth

Jul 03, 2025 : 63 cfs

05PH003

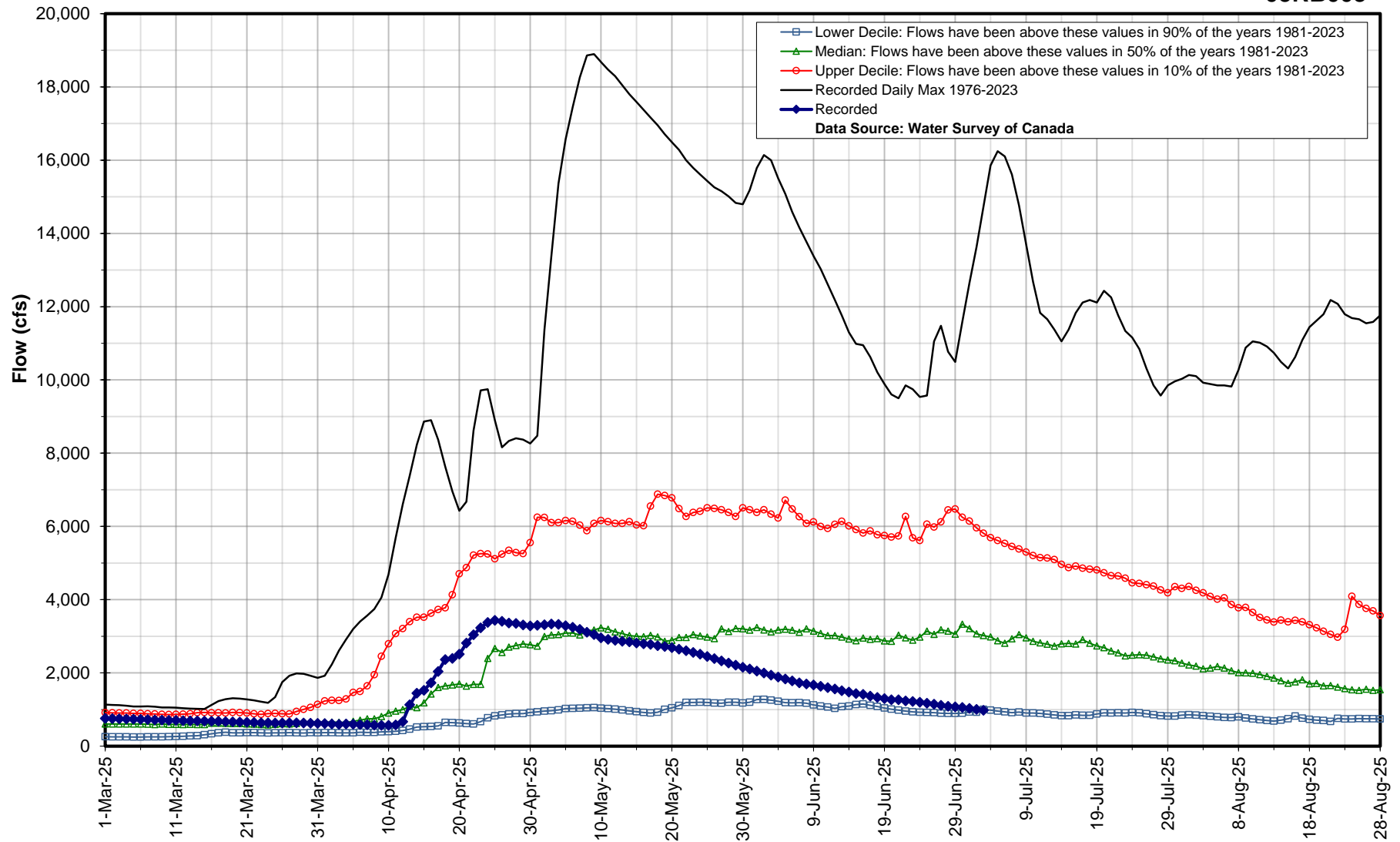


Hydrologic Forecast Centre - Manitoba Transportation and Infrastructure

Bloodvein River above Bloodvein Bay

Jul 03, 2025 : 977 cfs

05RB003

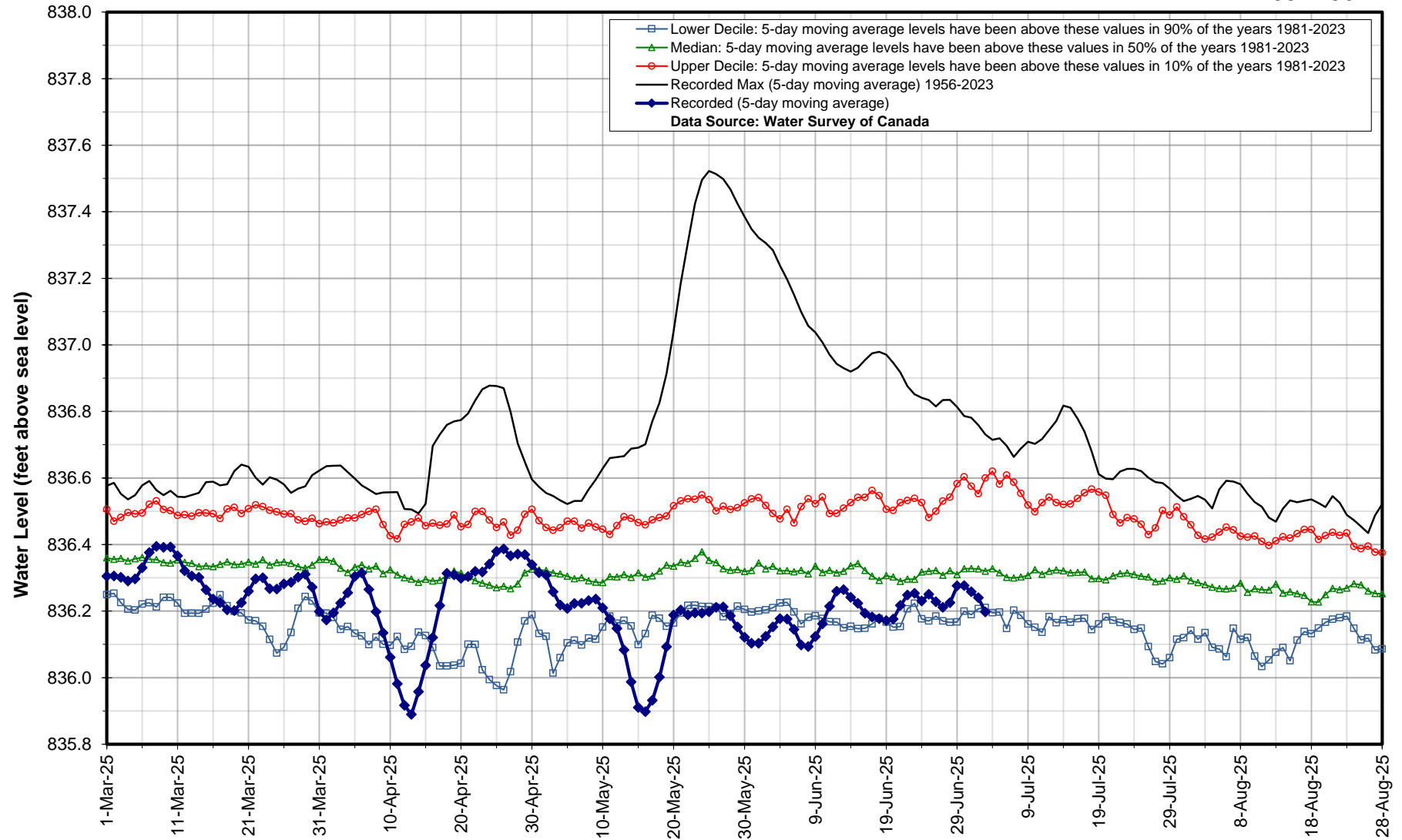


Hydrologic Forecast Centre - Manitoba Transportation and Infrastructure

Winnipeg River at Lac du Bonnet

Jul 03, 2025 : 836.03 ft

05PF062

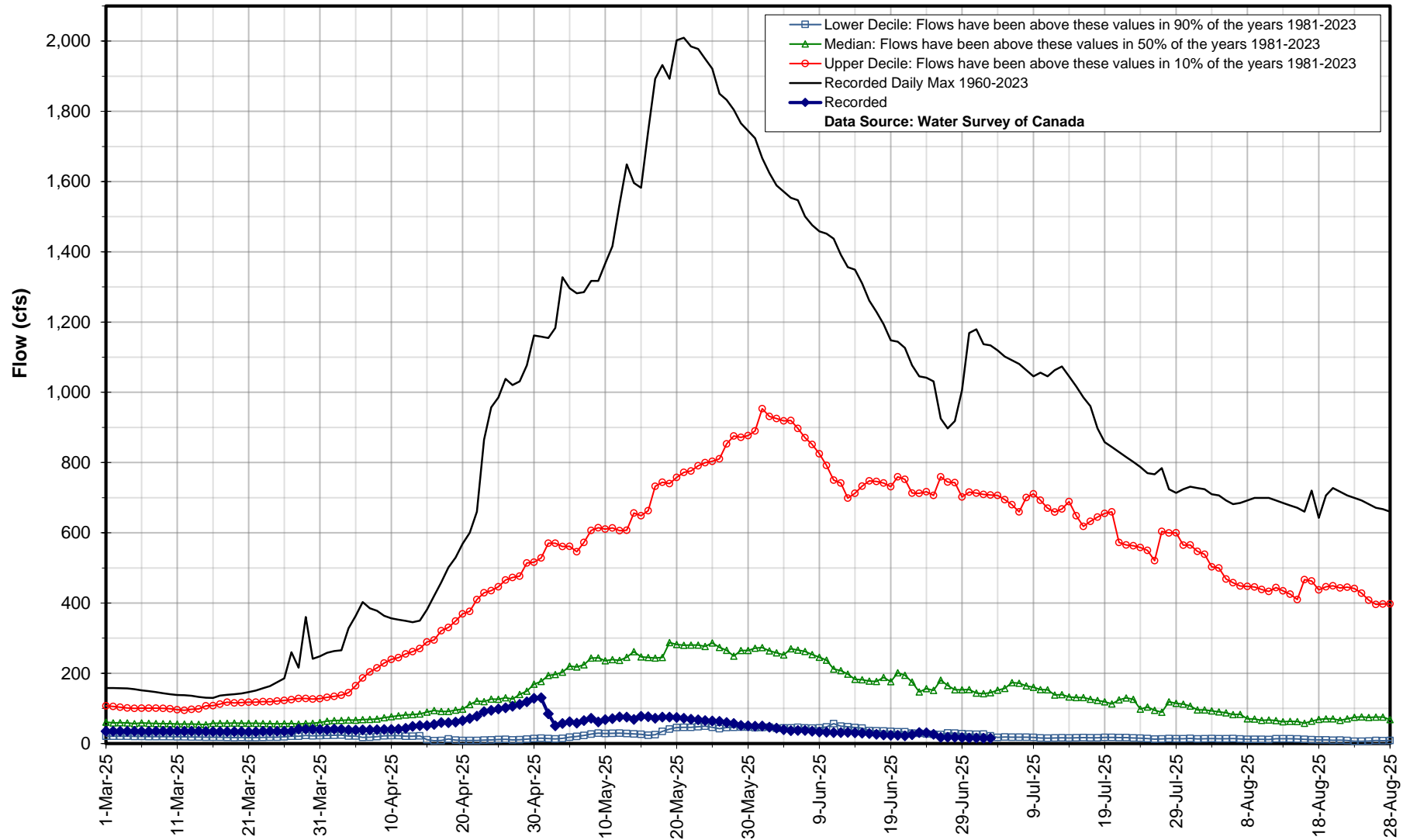


Hydrologic Forecast Centre - Manitoba Transportation and Infrastructure

Whiteshell River at Outlet of Jessica Lake

Jul 03, 2025 : 15 cfs

05PG001

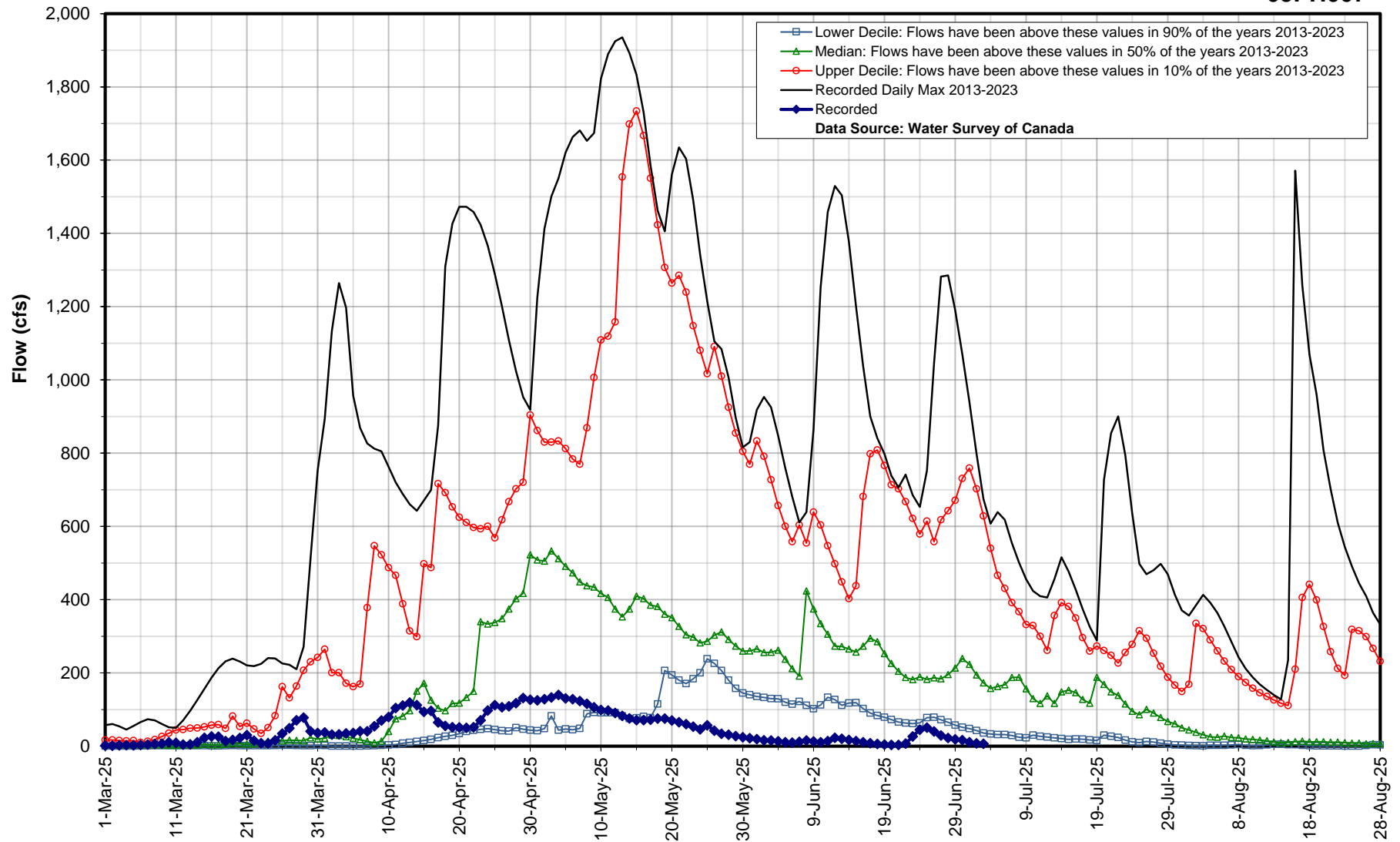


Hydrologic Forecast Centre - Manitoba Transportation and Infrastructure

Birch River near Prawda

Jul 03, 2025 : 7 cfs

05PH007

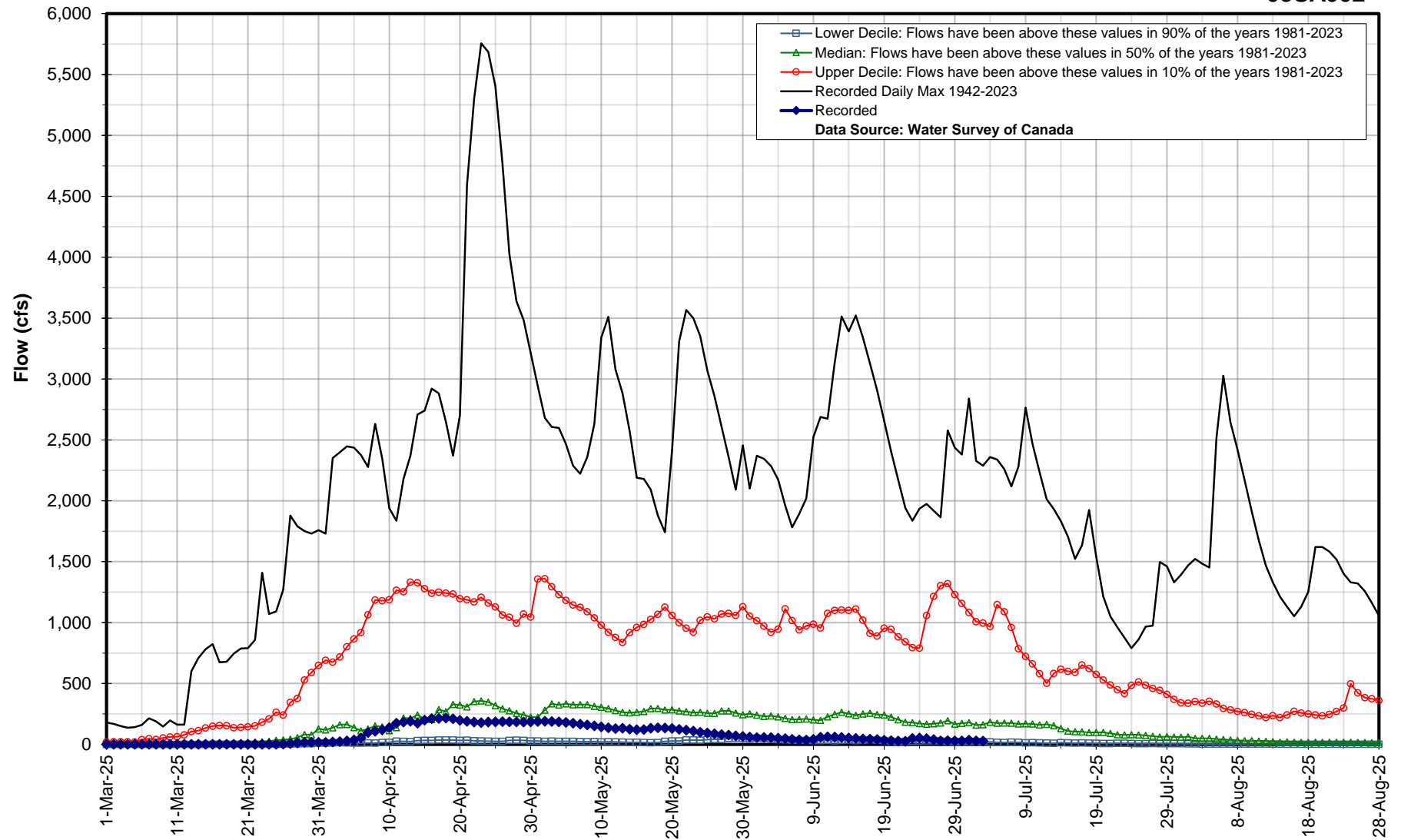


Hydrologic Forecast Centre - Manitoba Transportation and Infrastructure

Brokenhead River near Beausejour

Jul 03, 2025 : 28 cfs

05SA002



Hydrologic Forecast Centre - Manitoba Transportation and Infrastructure

Devils Creek near Libau

Jul 03, 2025 : 1 cfs

050J016

