

## Hydrologic Forecast Centre - Manitoba Transportation and Infrastructure

Red River Tributary Flows		
Last Reading Date	Hydrometric Stations	Flow (cfs)
3-Jul-25	La Salle River near Sanford	9
3-Jul-25	Snowflake Creek near Snowflake	1
3-Jul-25	Mowbray Creek near Mowbray	0
3-Jul-25	Main Drain near Dominion City	0
3-Jul-25	Joubert Creek at St. Pierre-Jolys	2
3-Jul-25	Morris River near Rosenort	5
3-Jul-25	Little Morris River near Rosenort	0.9
3-Jul-25	Boyne River near Carman	3
3-Jul-25	Netley Creek near Petersfield	0
3-Jul-25	Deadhorse Creek near Rosenfeld	9
3-Jul-25	Buffalo Creek near Rosenfeld	0
3-Jul-25	Riviere aux Marais near Christie	0
3-Jul-25	Vita Drain near Stuartburn	6
3-Jul-25	Manning Canal near Ile Des Chenes	173
3-Jul-25	Tourond Creek near Tourond	2
3-Jul-25	Marsh River near Otterburne	0
3-Jul-25	Joubert Creek near Pansy	1
3-Jul-25	Shannon Creek near Morris	9

**Note:** Please go to the next pages to view the historical and current flow hydrographs for these rivers

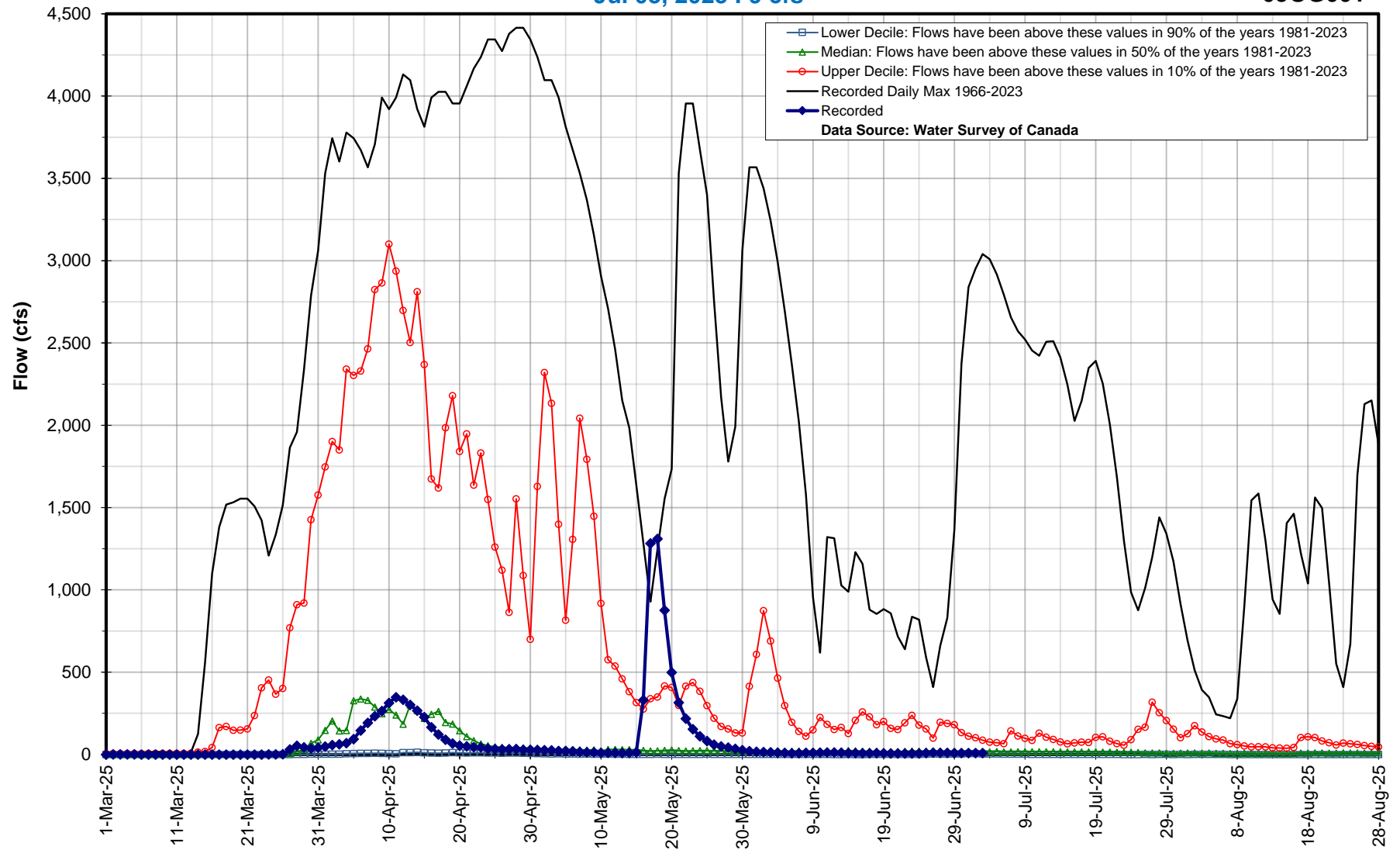
\* Real-time flow and level data is provisional and subject to change. Data provided by Water Survey of Canada/Environment Canada

Hydrologic Forecast Centre - Manitoba Transportation and Infrastructure

La Salle River near Sanford

Jul 03, 2025 : 9 cfs

05OG001

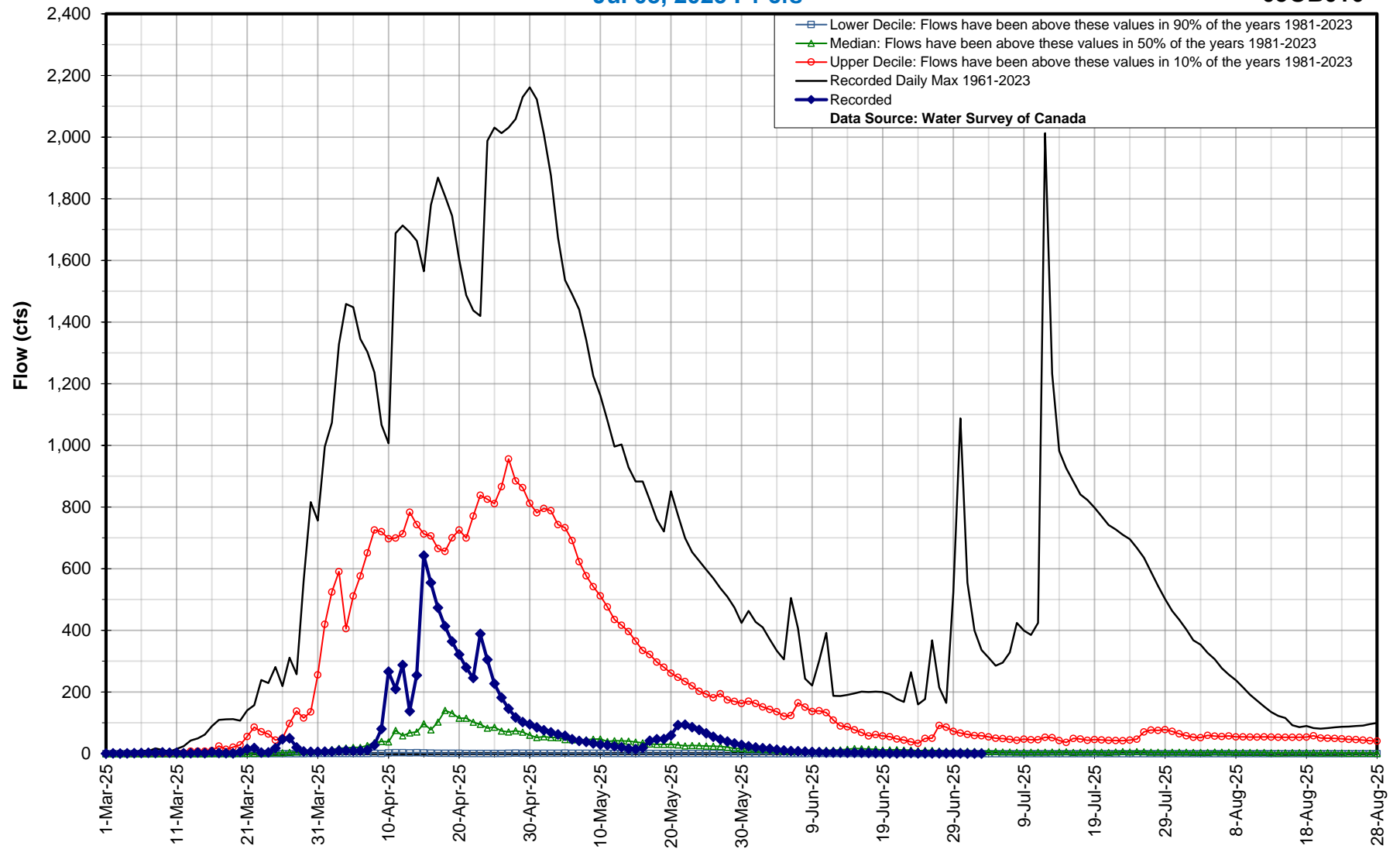


Hydrologic Forecast Centre - Manitoba Transportation and Infrastructure

**Snowflake Creek near Snowflake**

Jul 03, 2025 : 1 cfs

05OB016

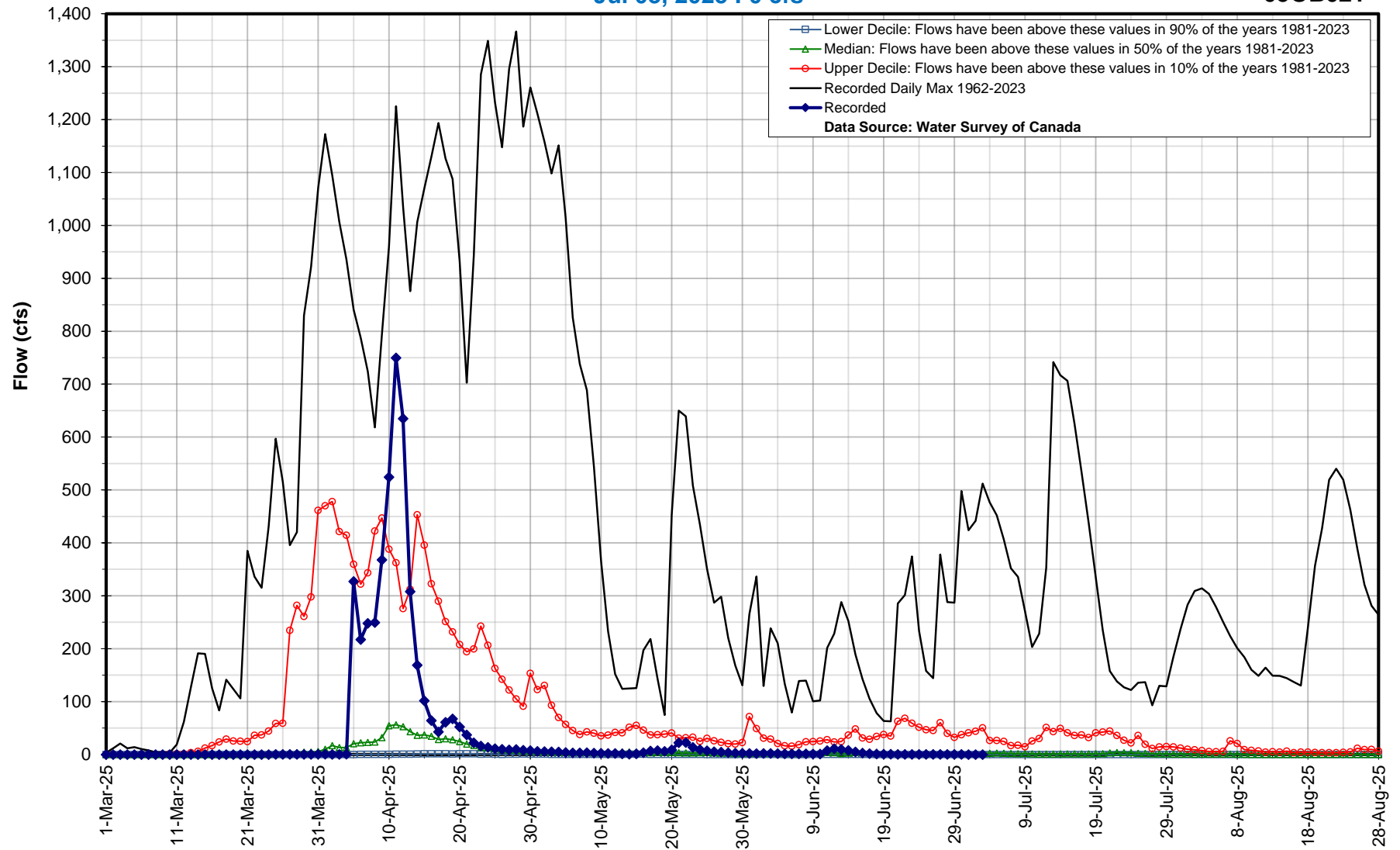


Hydrologic Forecast Centre - Manitoba Transportation and Infrastructure

**Mowbray Creek near Mowbray**

Jul 03, 2025 : 0 cfs

050B021

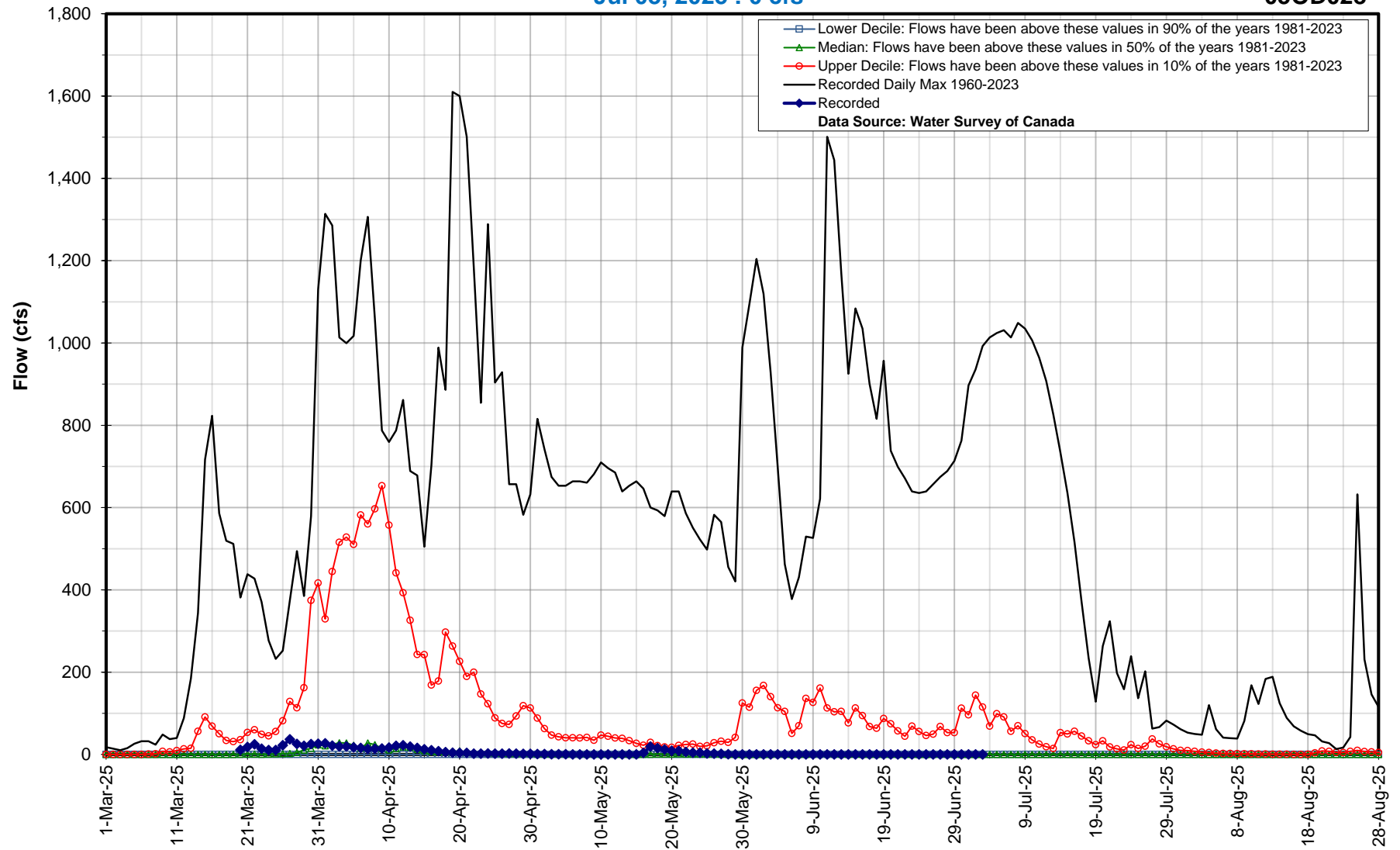


Hydrologic Forecast Centre - Manitoba Transportation and Infrastructure

Main Drain near Dominion City

Jul 03, 2025 : 0 cfs

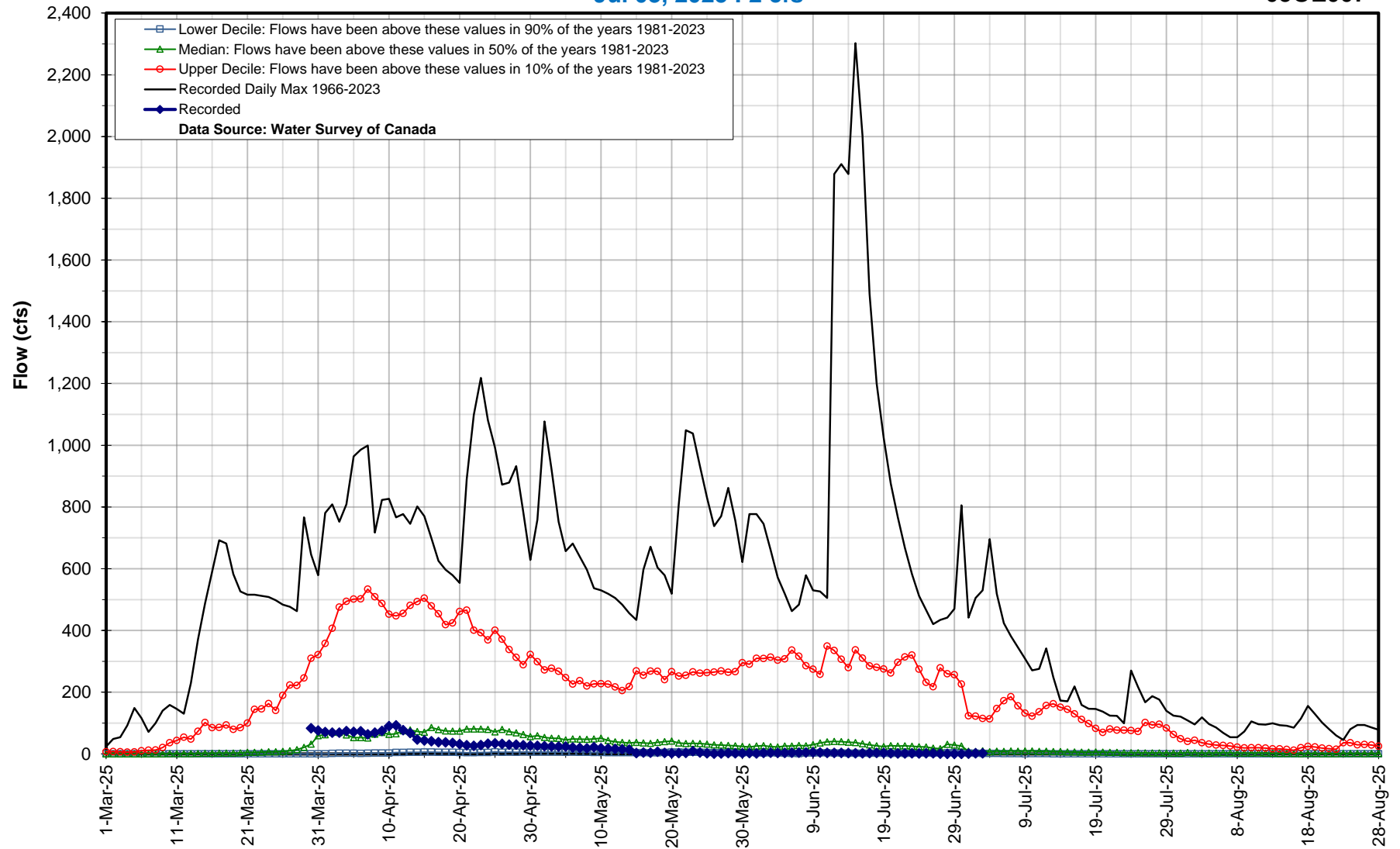
05OD028



## Joubert Creek at St. Pierre-Jolys

Jul 03, 2025 : 2 cfs

050E007

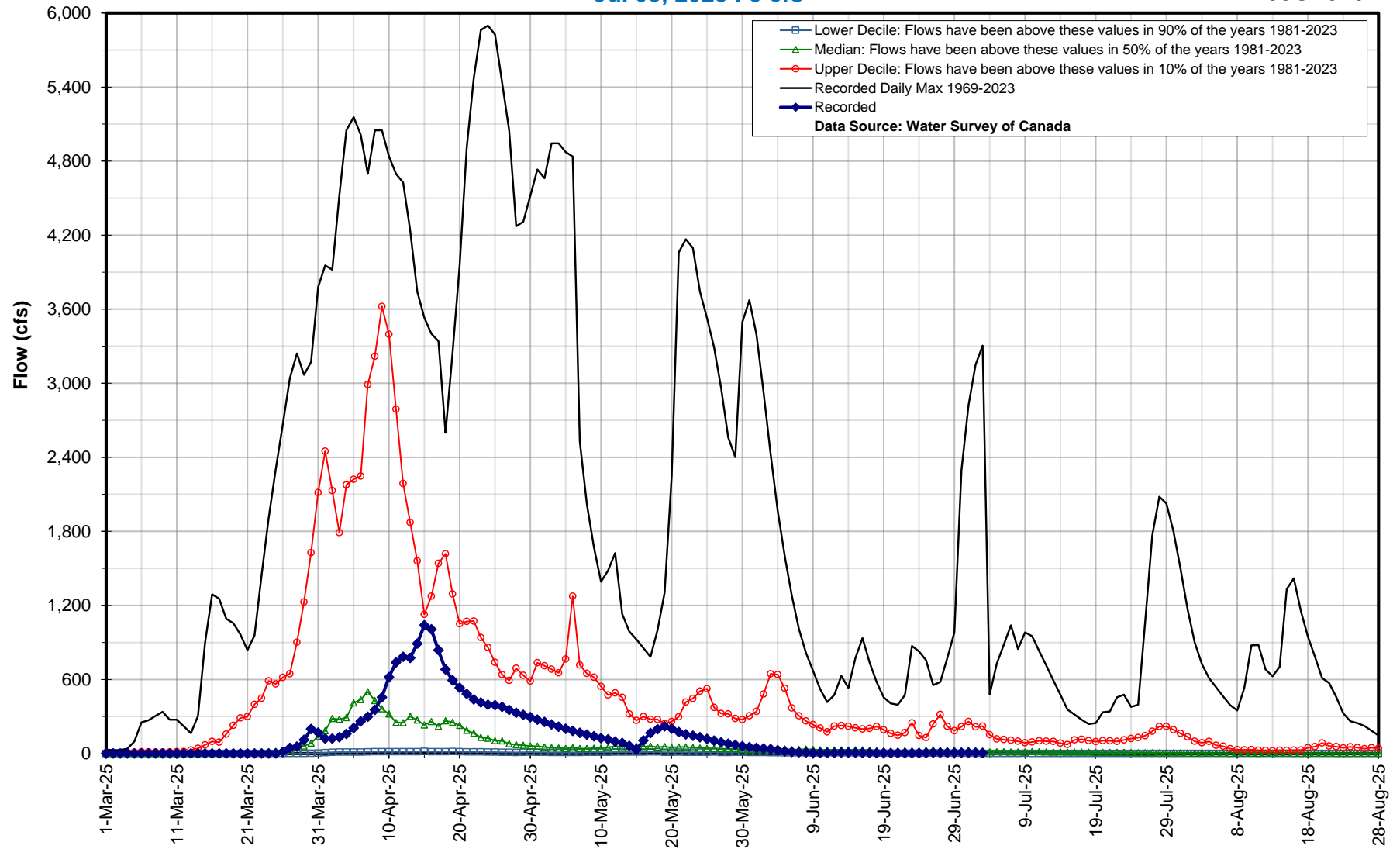


Hydrologic Forecast Centre - Manitoba Transportation and Infrastructure

**Morris River near Rosenort**

Jul 03, 2025 : 5 cfs

05OF020

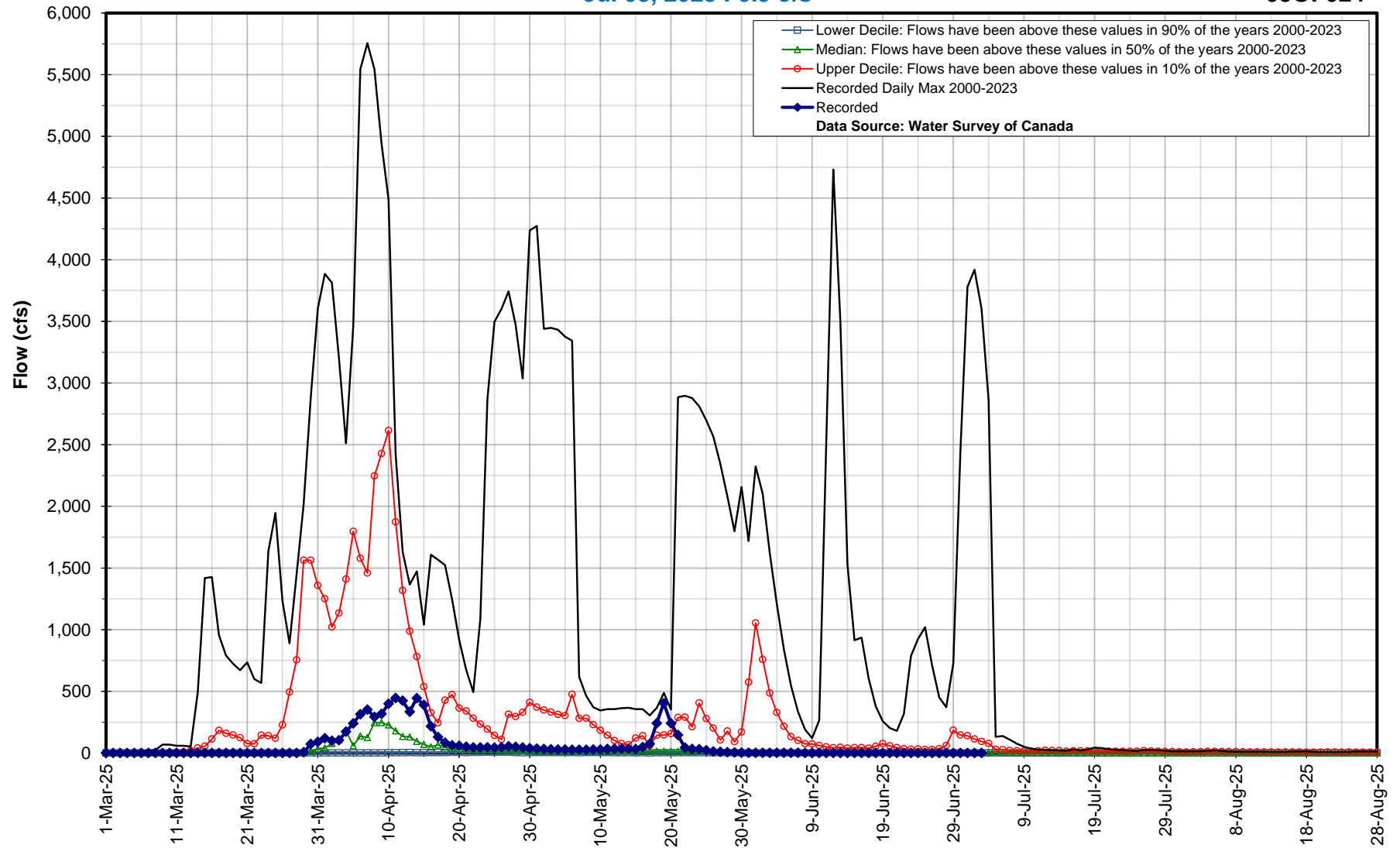


Hydrologic Forecast Centre - Manitoba Transportation and Infrastructure

**Little Morris River near Rosenort**

**Jul 03, 2025 : 0.9 cfs**

**05OF024**



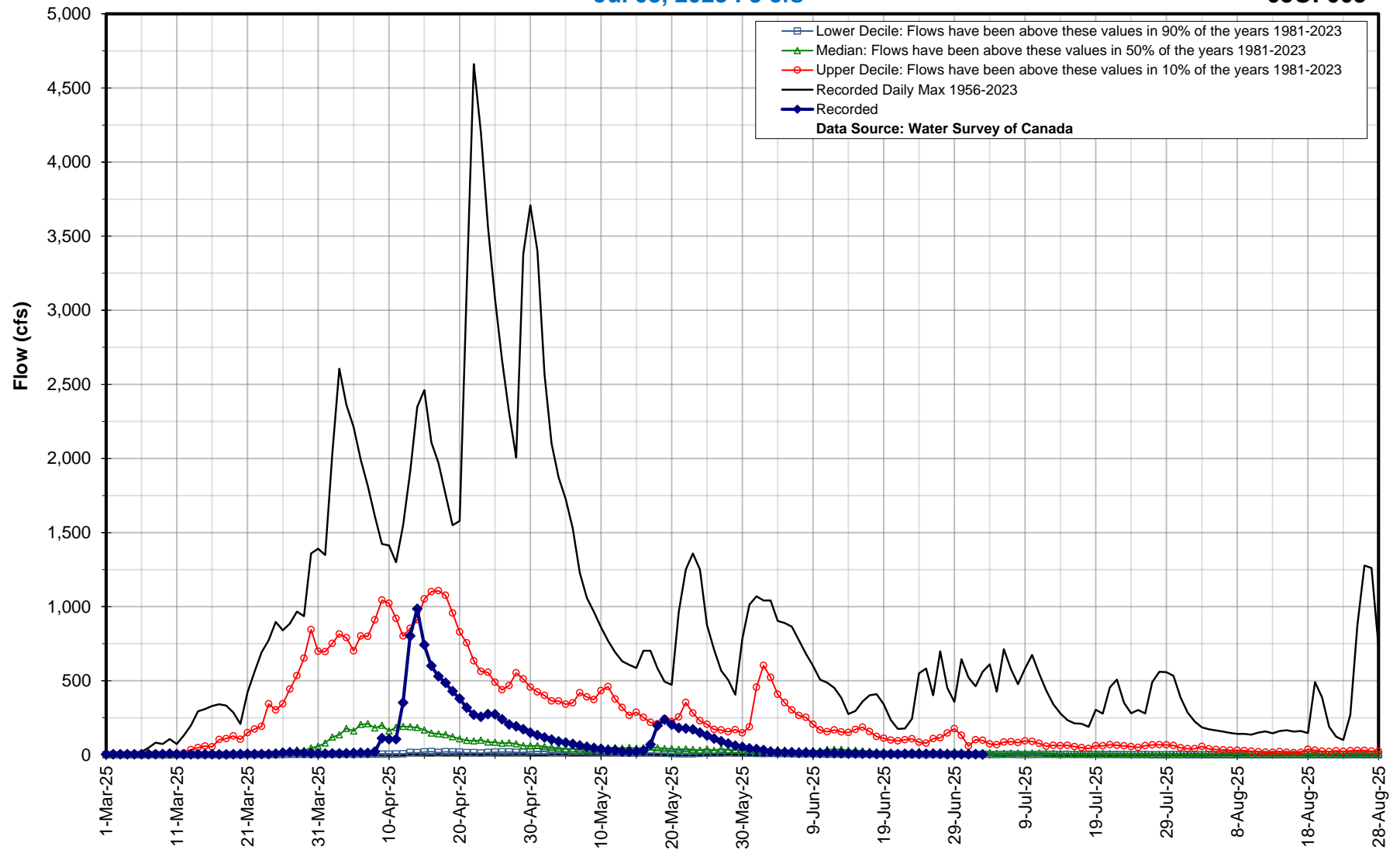


Hydrologic Forecast Centre - Manitoba Transportation and Infrastructure

Boyne River near Carman

Jul 03, 2025 : 3 cfs

050F003

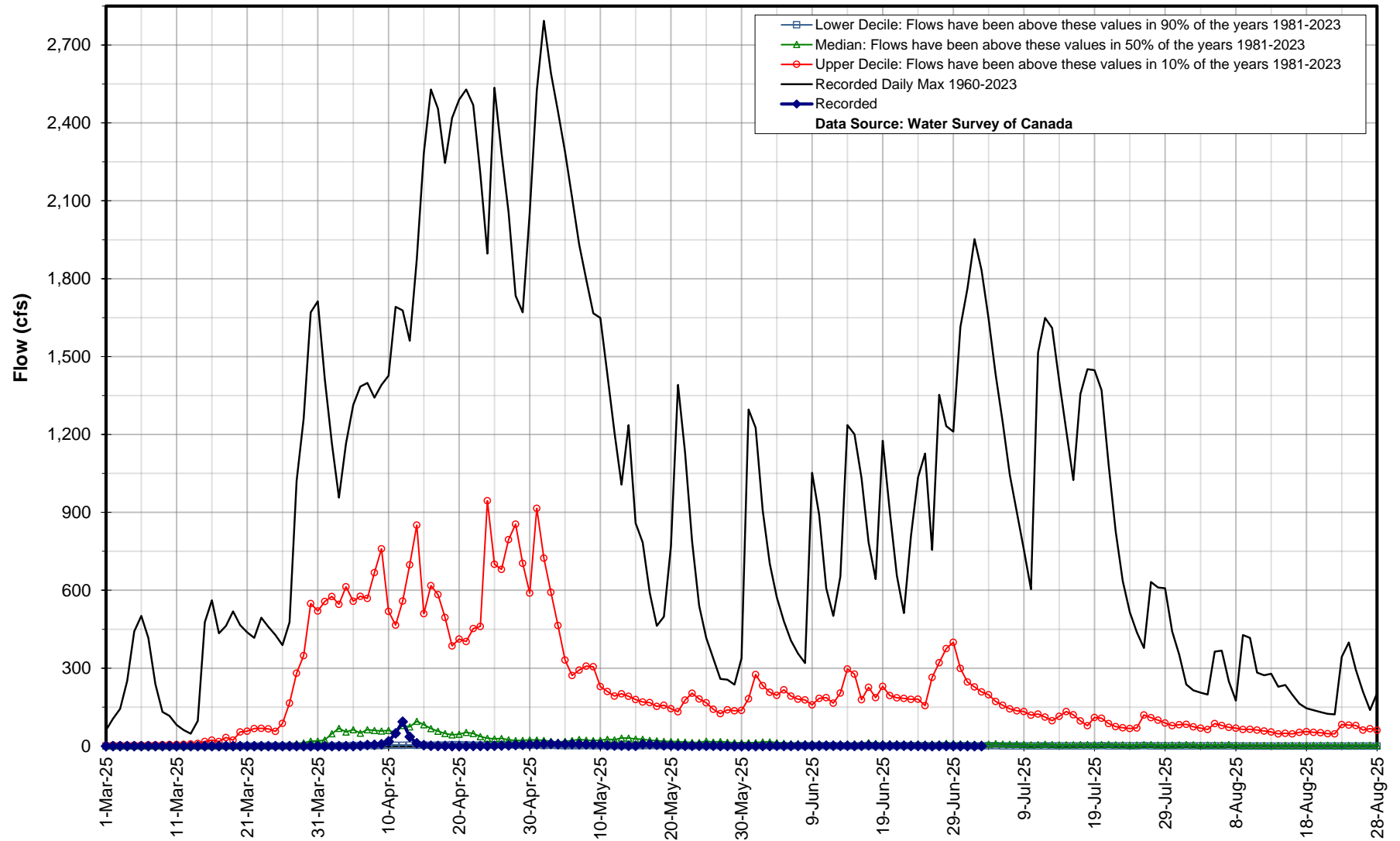


Hydrologic Forecast Centre - Manitoba Transportation and Infrastructure

Netley Creek near Petersfield

Jul 03, 2025 : 0 cfs

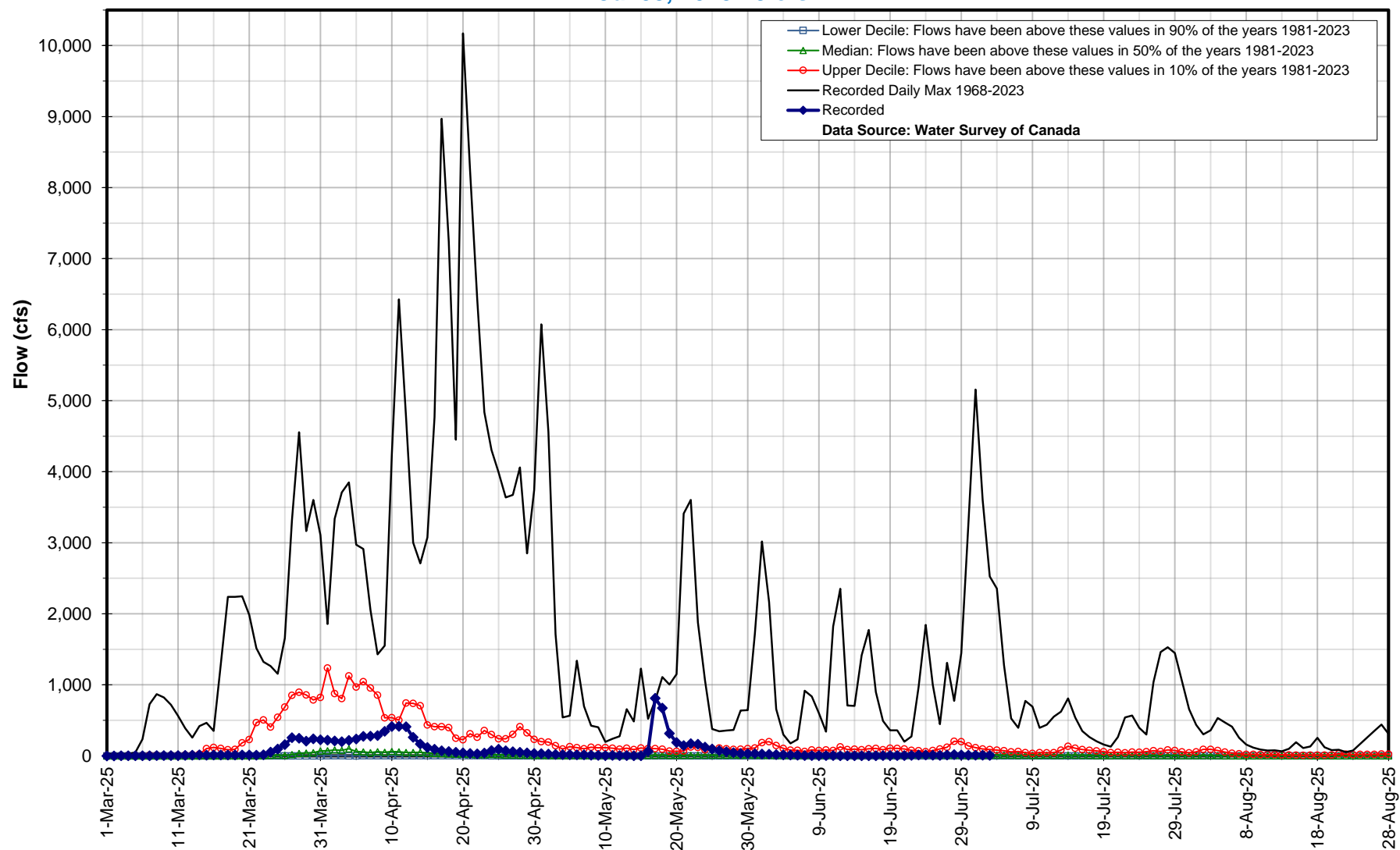
050J008



## Deadhorse Creek near Rosenfeld

Jul 03, 2025 : 9 cfs

05OC016

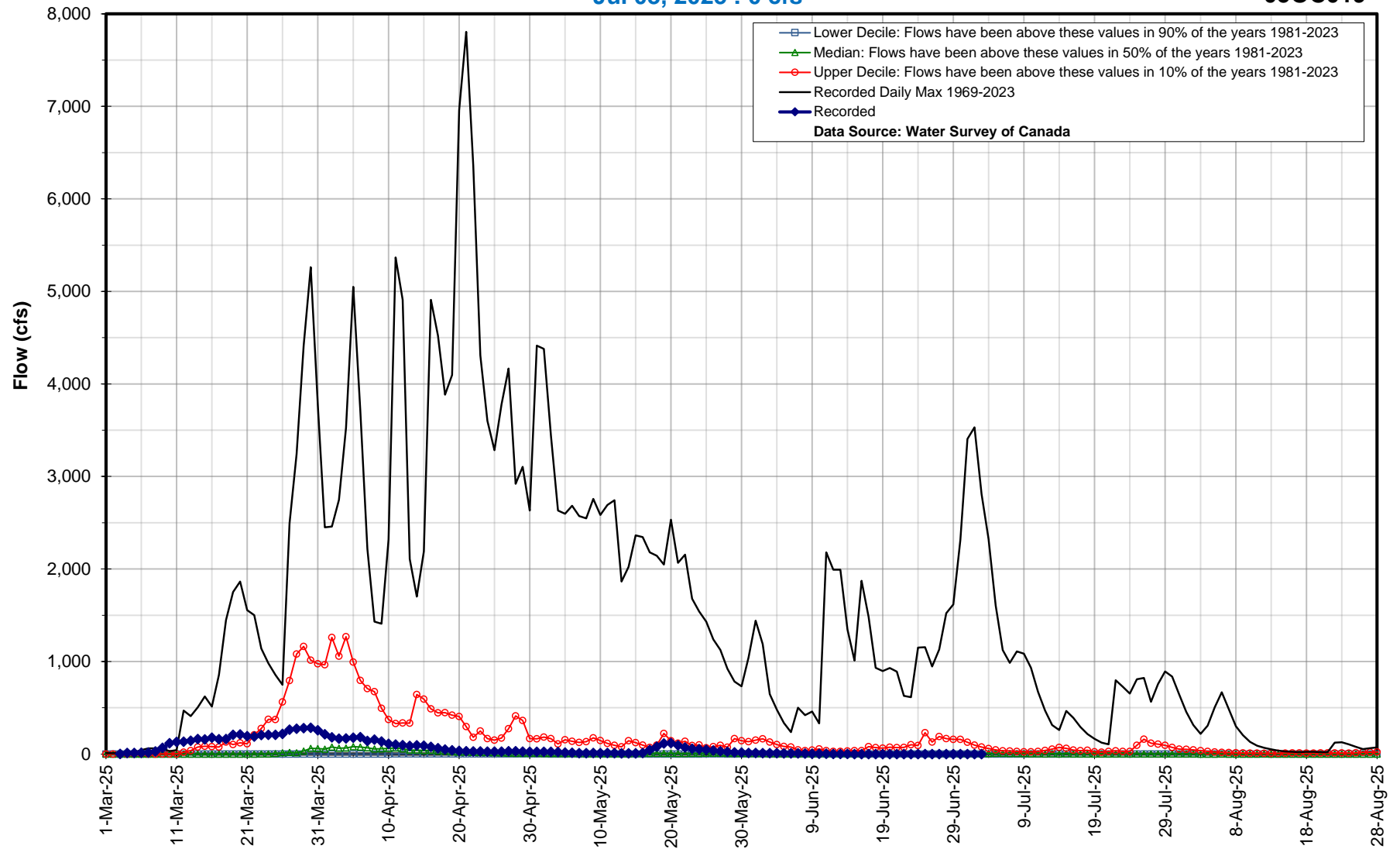


Hydrologic Forecast Centre - Manitoba Transportation and Infrastructure

**Buffalo Creek near Rosenfeld**

**Jul 03, 2025 : 0 cfs**

**05OC019**

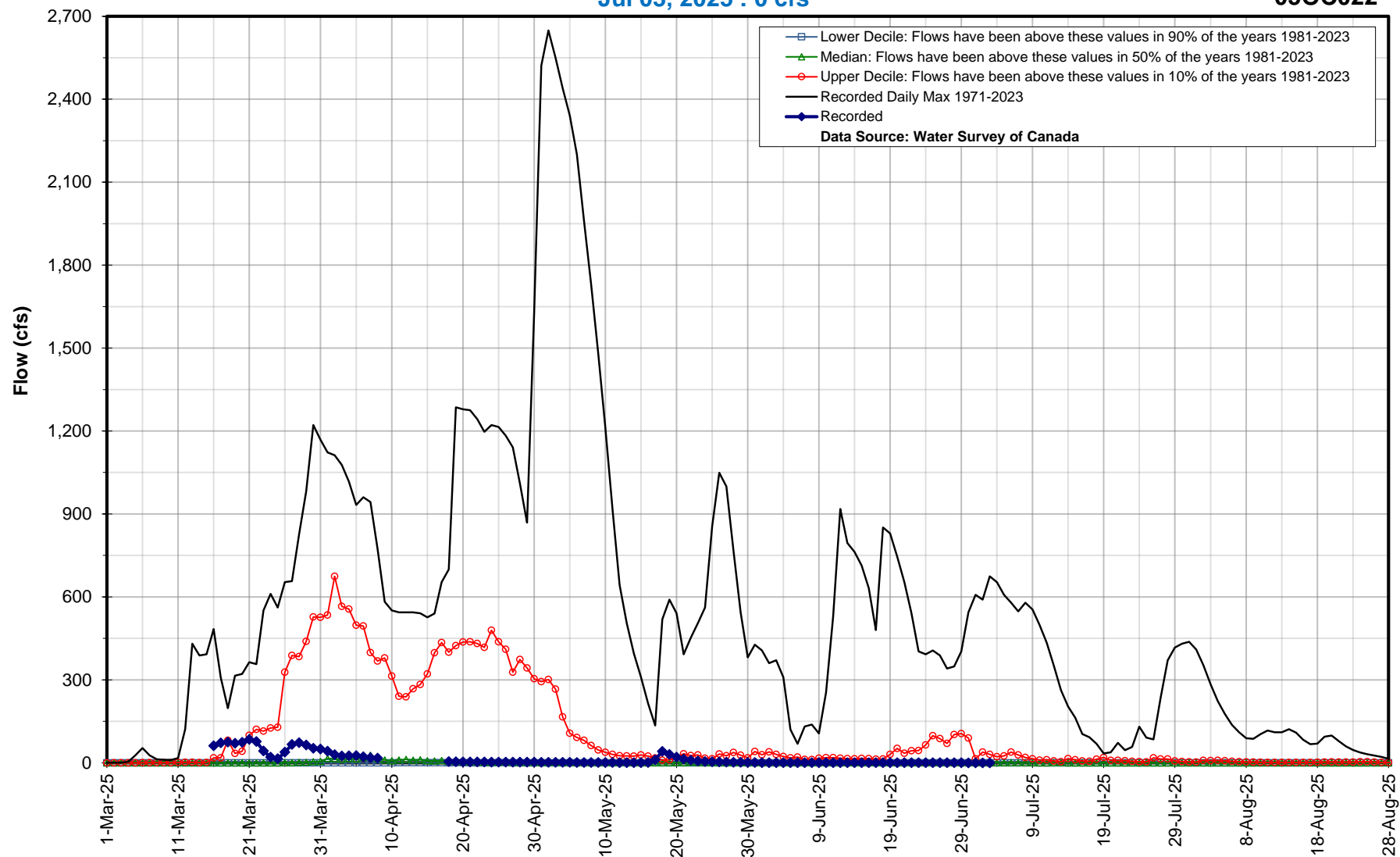


Hydrologic Forecast Centre - Manitoba Transportation and Infrastructure

Riviere aux Marais near Christie

Jul 03, 2025 : 0 cfs

05OC022

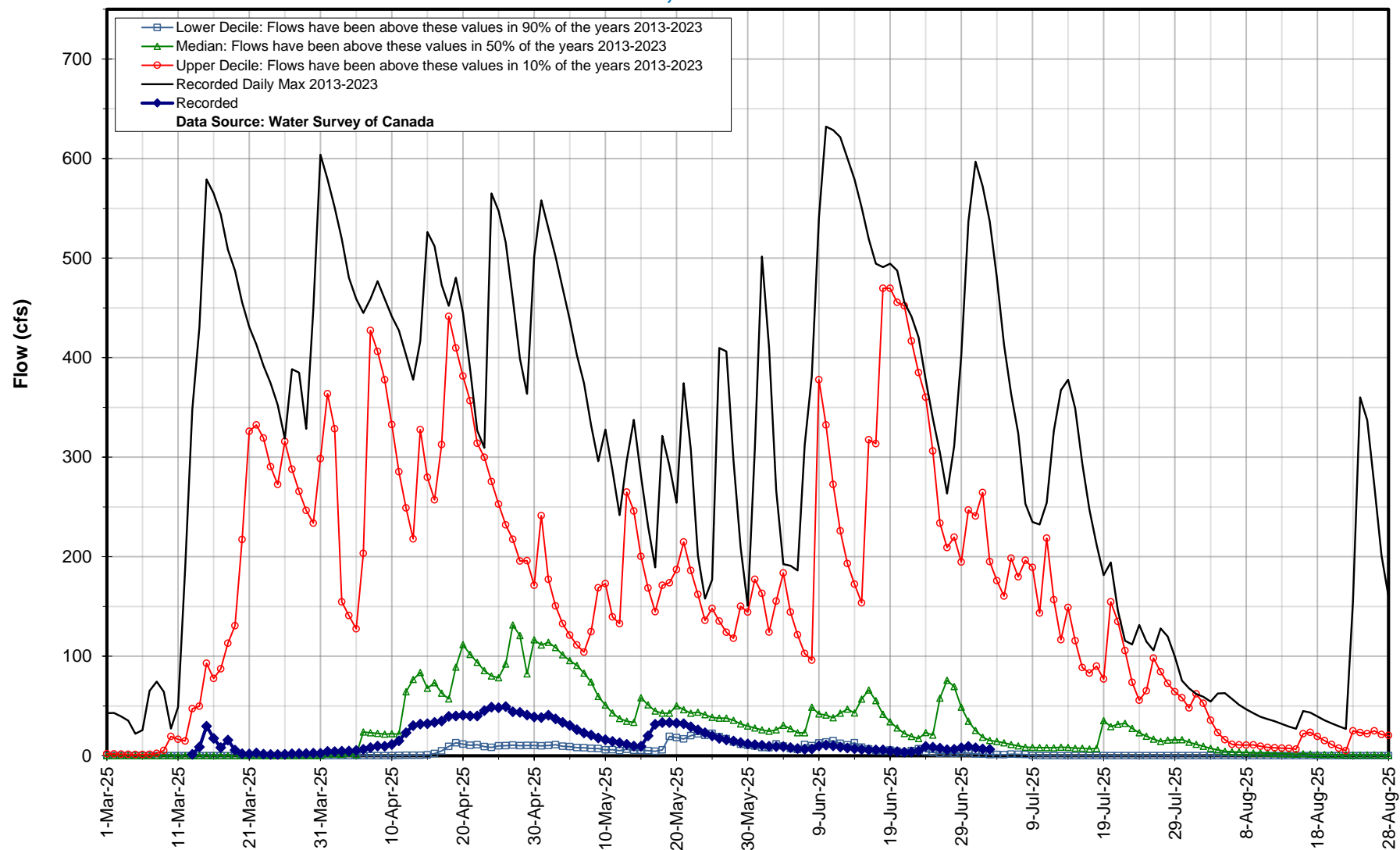


Hydrologic Forecast Centre - Manitoba Transportation and Infrastructure

Vita Drain near Stuartburn

Jul 03, 2025 : 6 cfs

05OD034

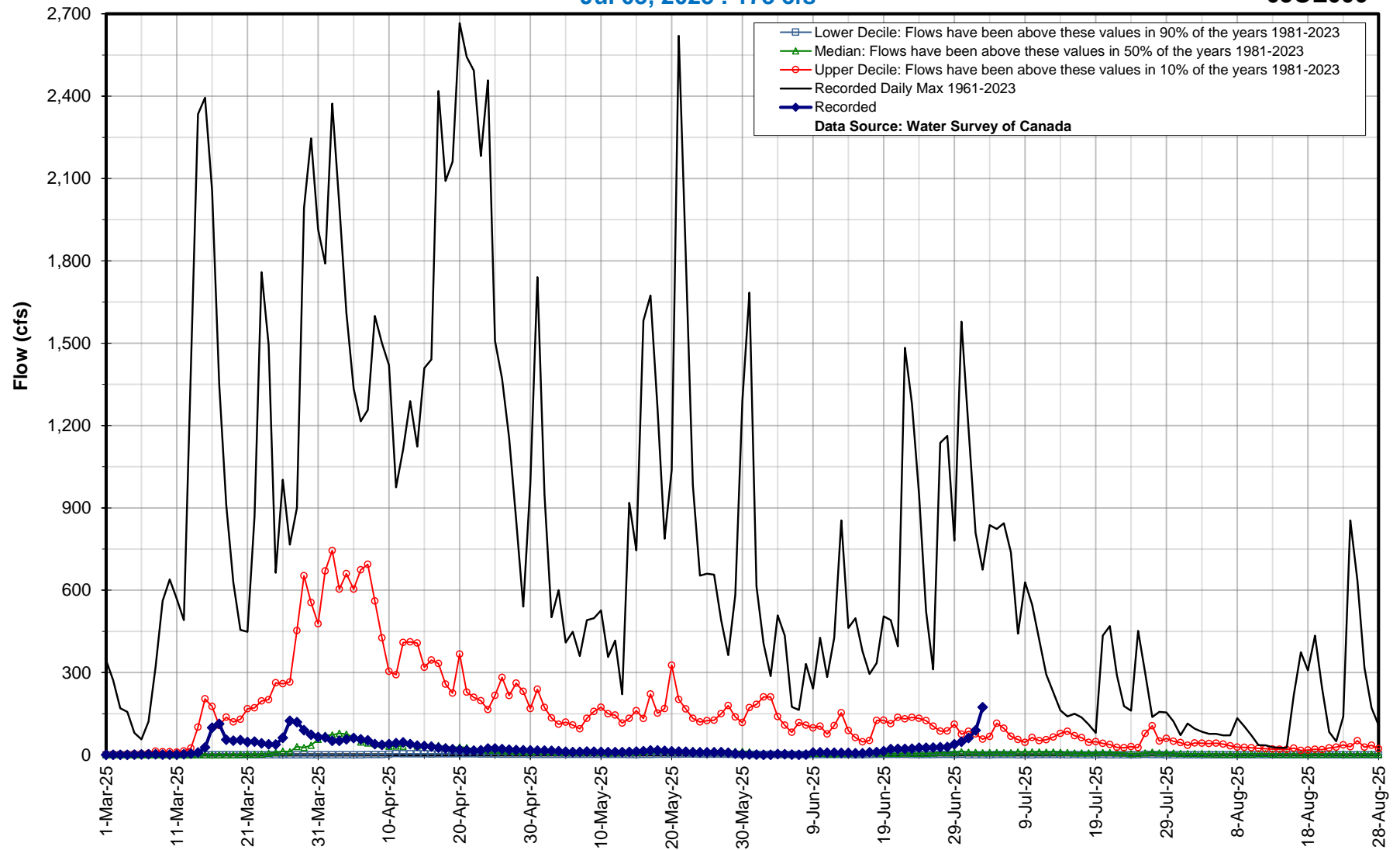


Hydrologic Forecast Centre - Manitoba Transportation and Infrastructure

**Manning Canal near Ile Des Chenes**

**Jul 03, 2025 : 173 cfs**

**05OE006**

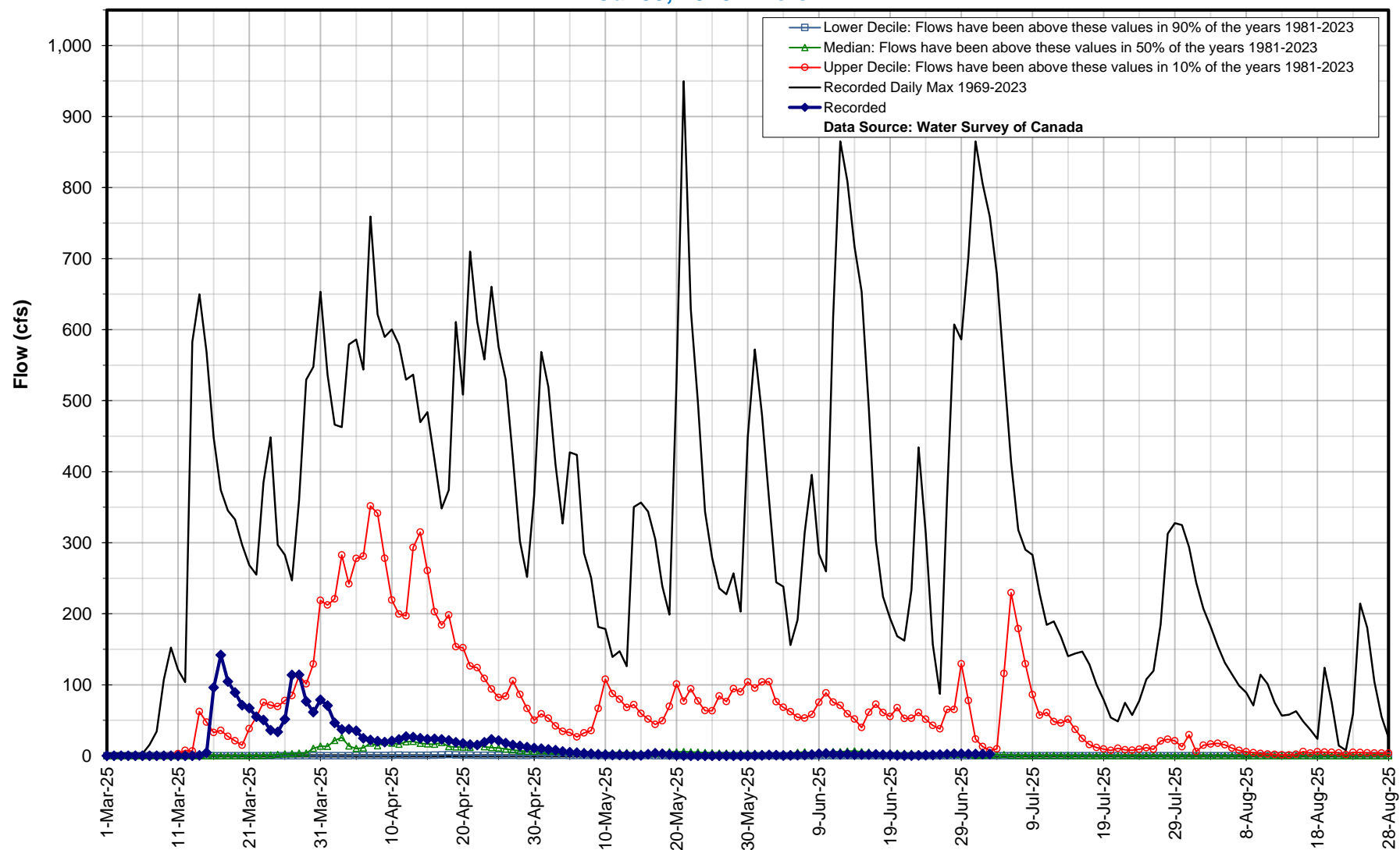


Hydrologic Forecast Centre - Manitoba Transportation and Infrastructure

**Tourond Creek near Tourond**

**Jul 03, 2025 : 2 cfs**

**05OE009**



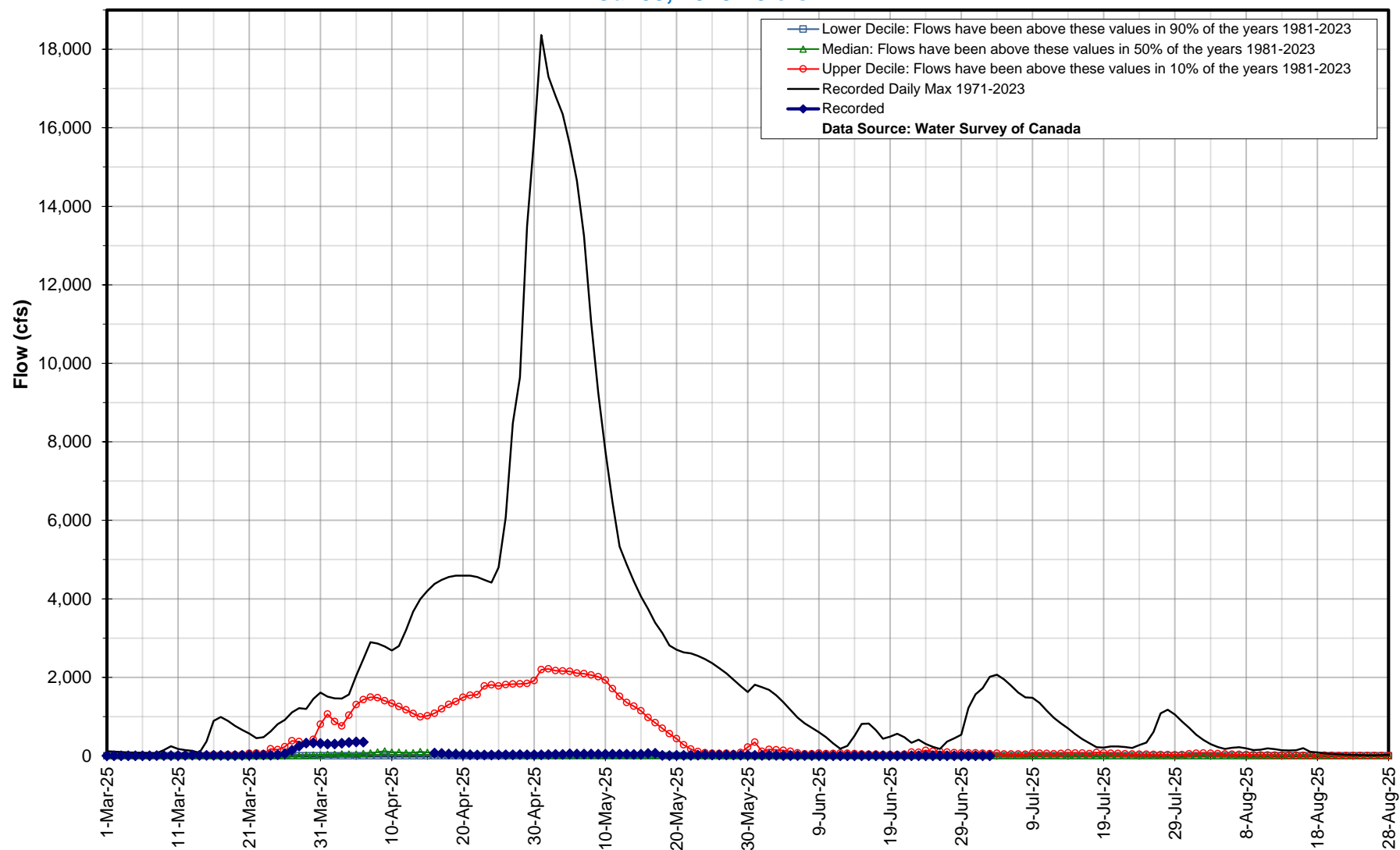


Hydrologic Forecast Centre - Manitoba Transportation and Infrastructure

Marsh River near Otterburne

Jul 03, 2025 : 0 cfs

05OE010

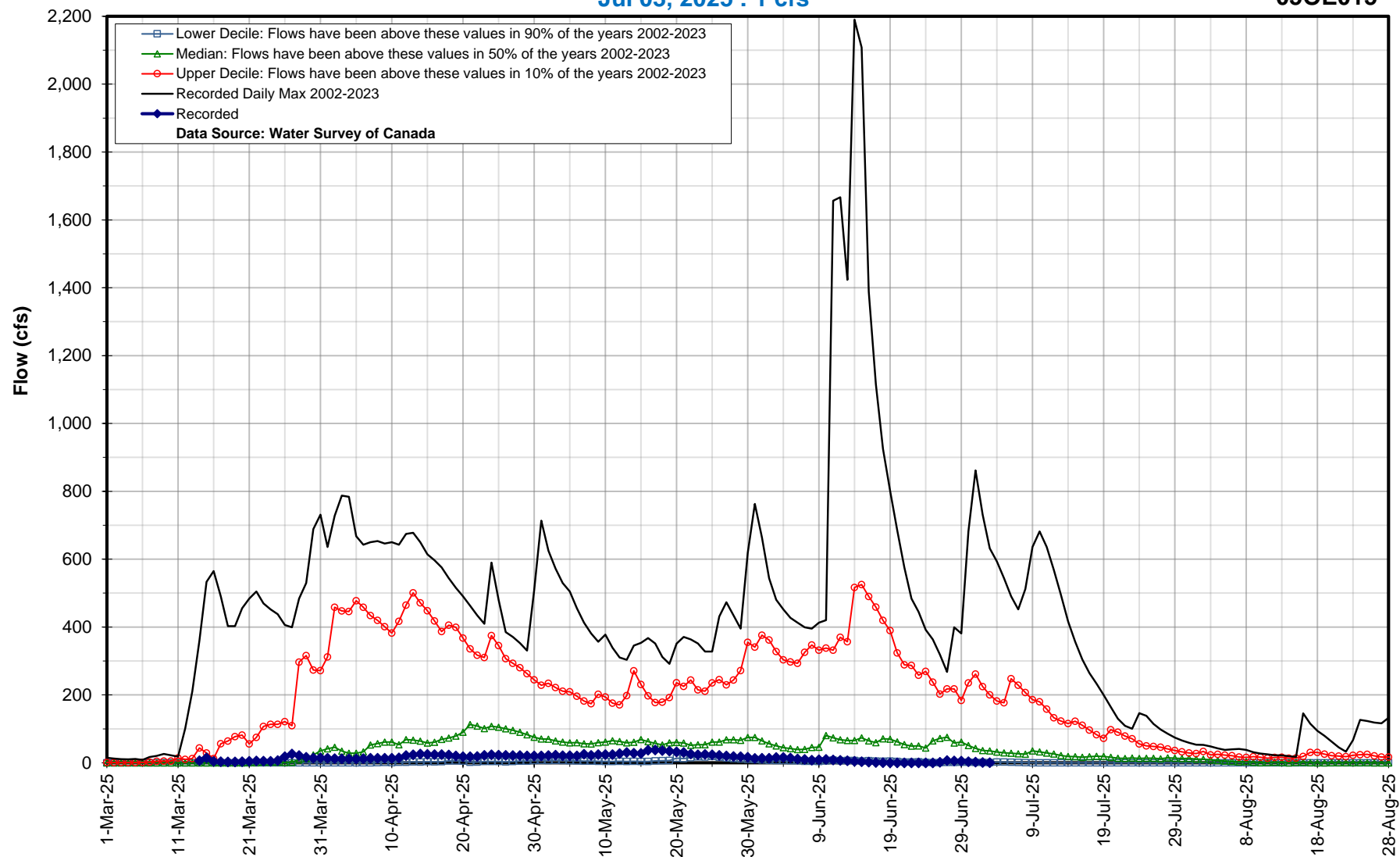


Hydrologic Forecast Centre - Manitoba Transportation and Infrastructure

Joubert Creek near Pansy

Jul 03, 2025 : 1 cfs

050E015



Hydrologic Forecast Centre - Manitoba Transportation and Infrastructure

**Shannon Creek near Morris**

**Jul 03, 2025 : 9 cfs**

**05OF014**

