

Hydrologic Forecast Centre - Manitoba Transportation and Infrastructure

Eastern Manitoba Flows and Levels			
Last Reading Date	Hydrometric Stations	Flow (cfs)	Level (feet)
15-Dec-25	Whitemouth River near Whitemouth	129	
15-Dec-25	Bloodvein River above Bloodvein Bay	694	
15-Dec-25	Winnipeg River at Lac du Bonnet		836.26
15-Dec-25	Whiteshell River at Outlet of Jessica Lake	67	
31-Oct-25	**Birch River near Prawda	---	
31-Oct-25	**Brokenhead River near Beausejour	---	
31-Oct-25	**Devils Creek near Libau	---	

Note: Please go to the next pages to view the historical and current flow hydrographs for these rivers

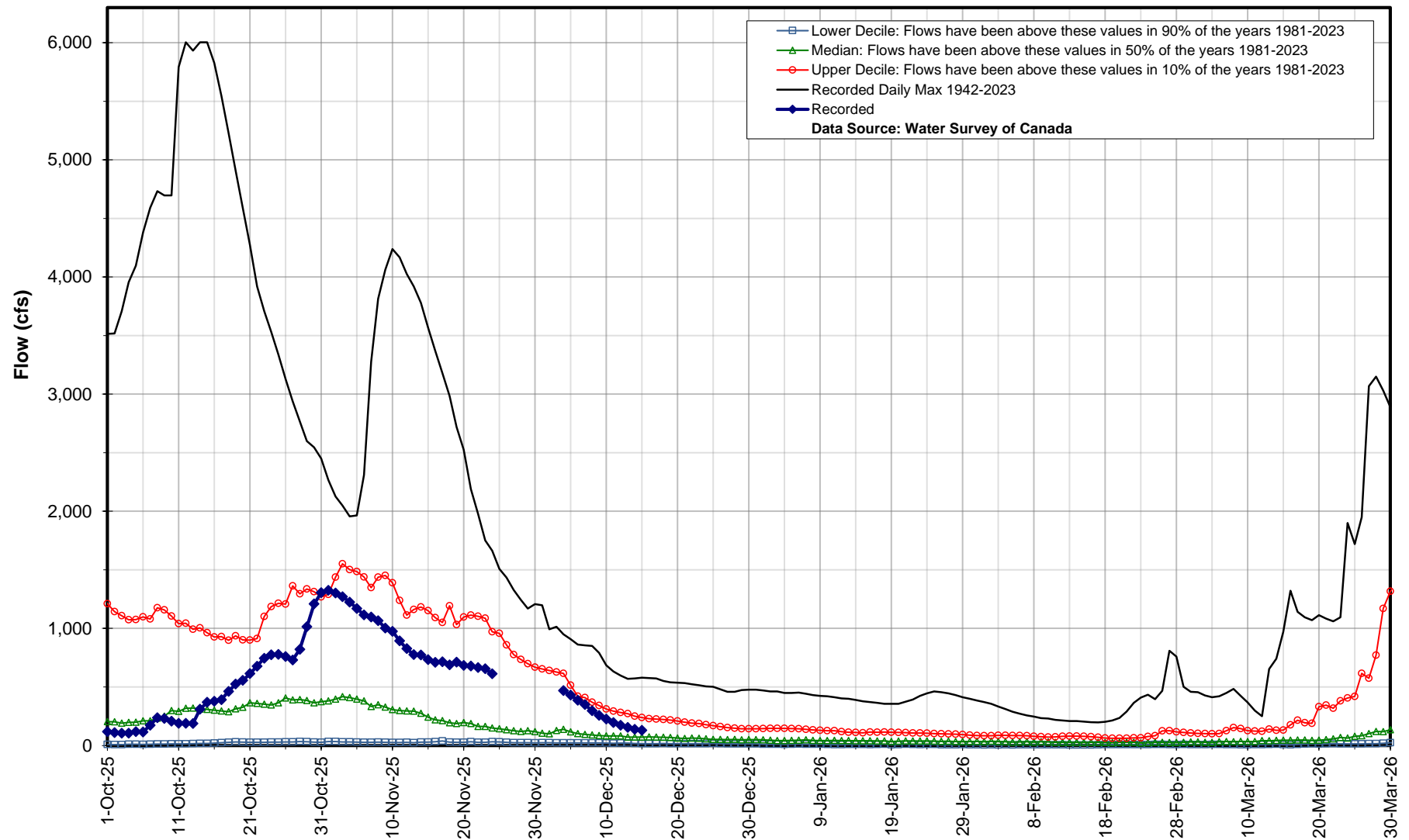
* Real-time flow and level data is provisional and subject to change. Data provided by Water Survey of Canada/Environment Canada

** Data from this gauge is currently unavailable because this gauge is only operational during open water season (March to October)

Whitemouth River near Whitemouth

Dec 15, 2025 : 129 cfs

05PH003

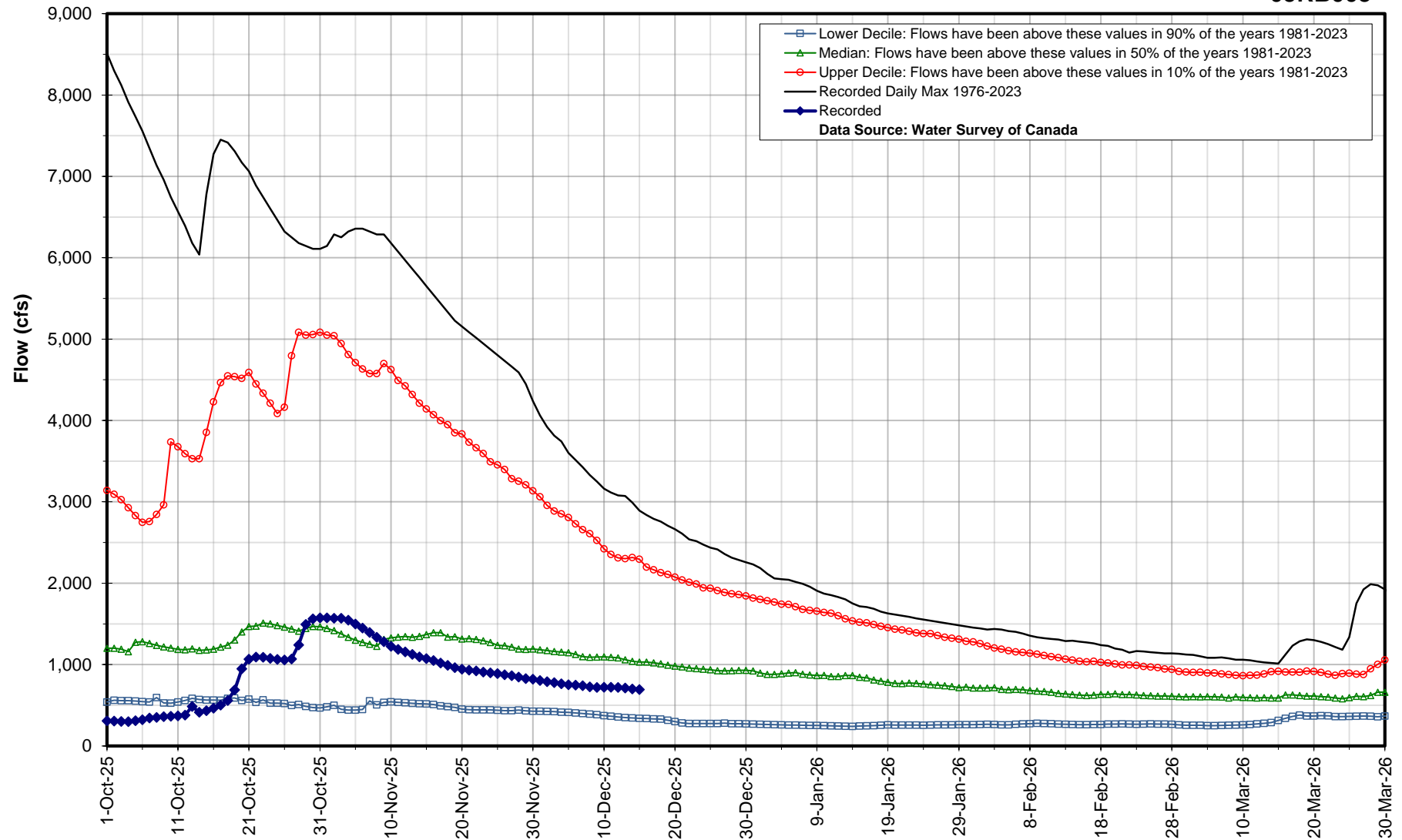


Hydrologic Forecast Centre - Manitoba Transportation and Infrastructure

Bloodvein River above Bloodvein Bay

Dec 15, 2025 : 694 cfs

05RB003

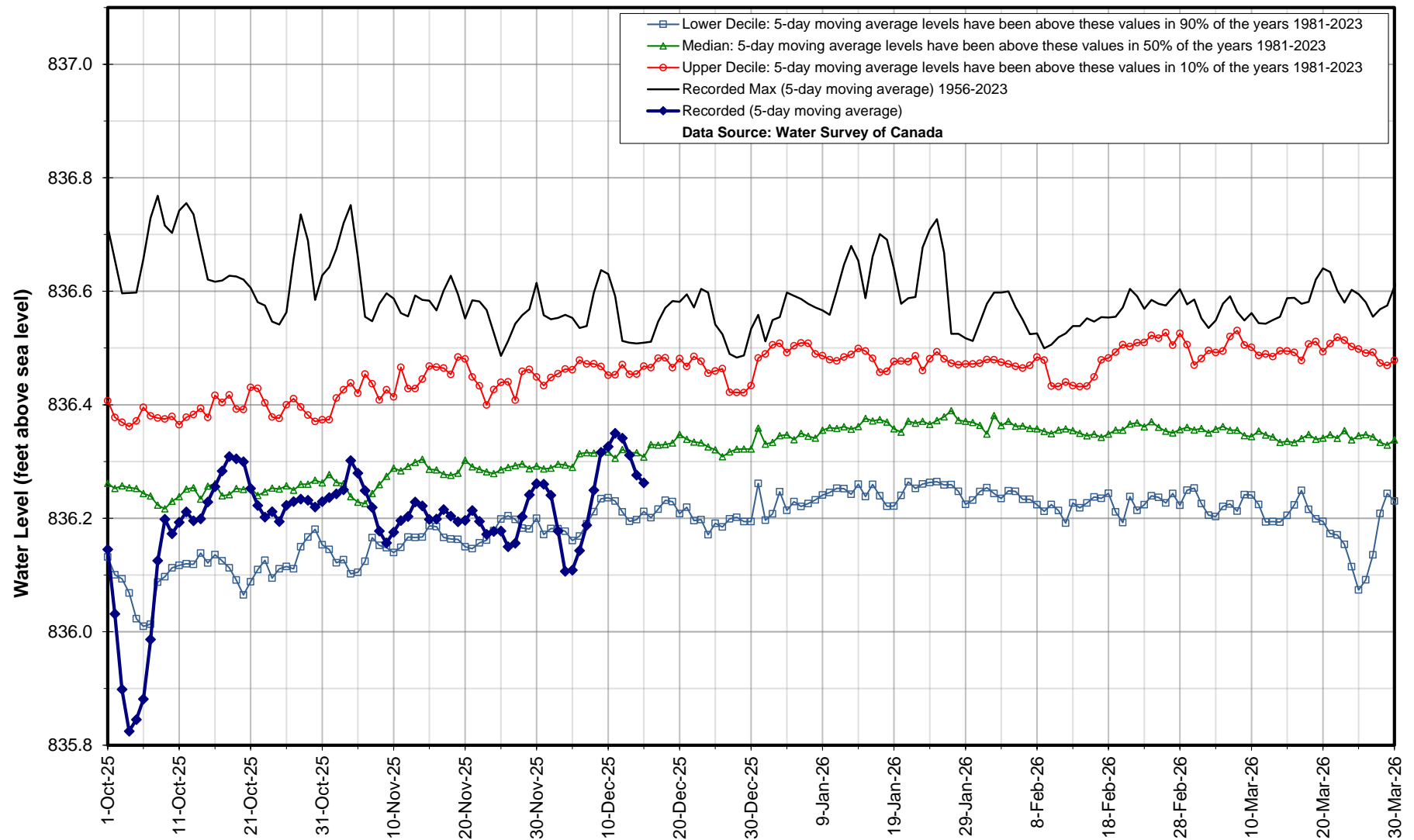


Hydrologic Forecast Centre - Manitoba Transportation and Infrastructure

Winnipeg River at Lac du Bonnet

Dec 15, 2025 : 836.26 ft

05PF062

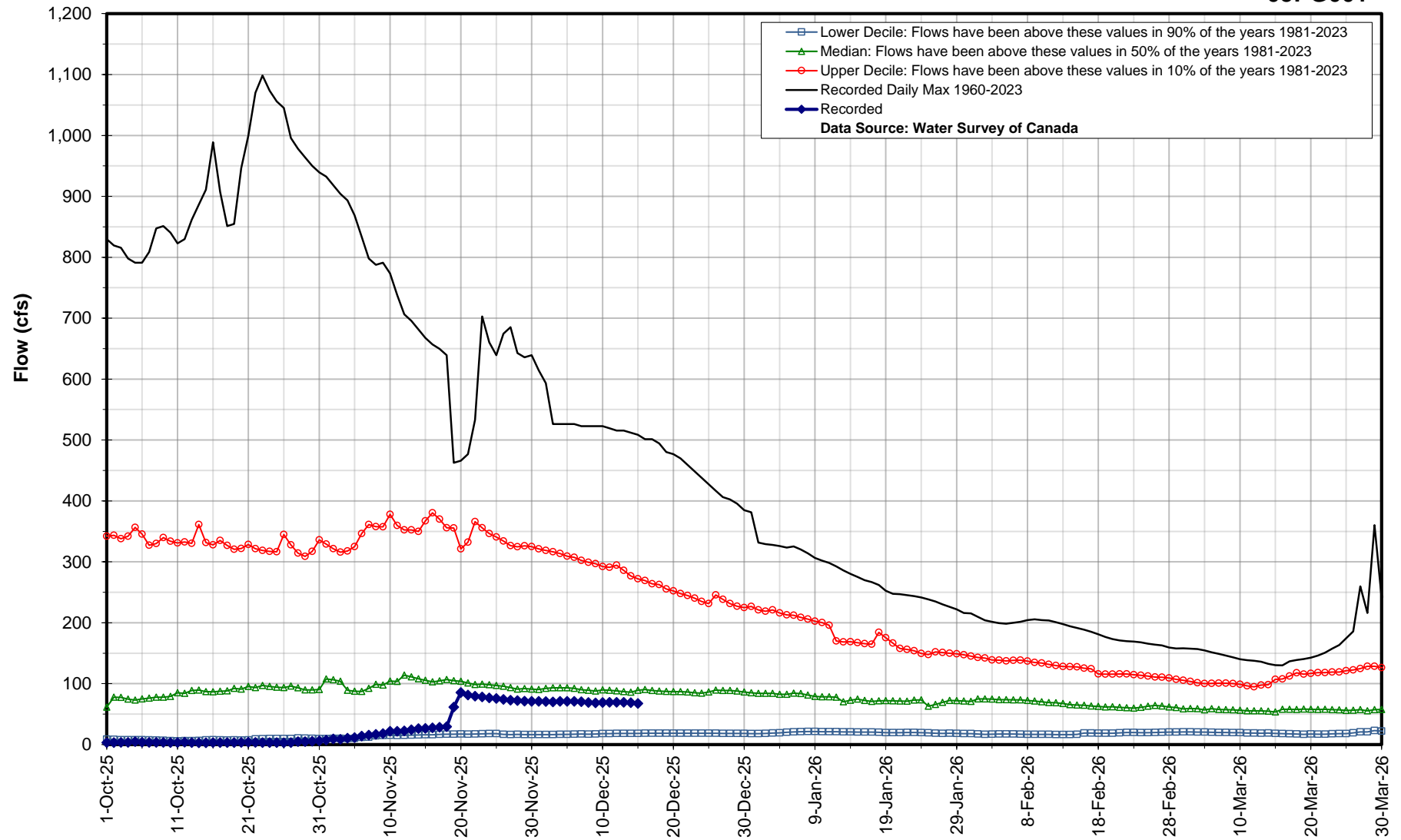


Hydrologic Forecast Centre - Manitoba Transportation and Infrastructure

Whiteshell River at Outlet of Jessica Lake

Dec 15, 2025 : 67 cfs

05PG001

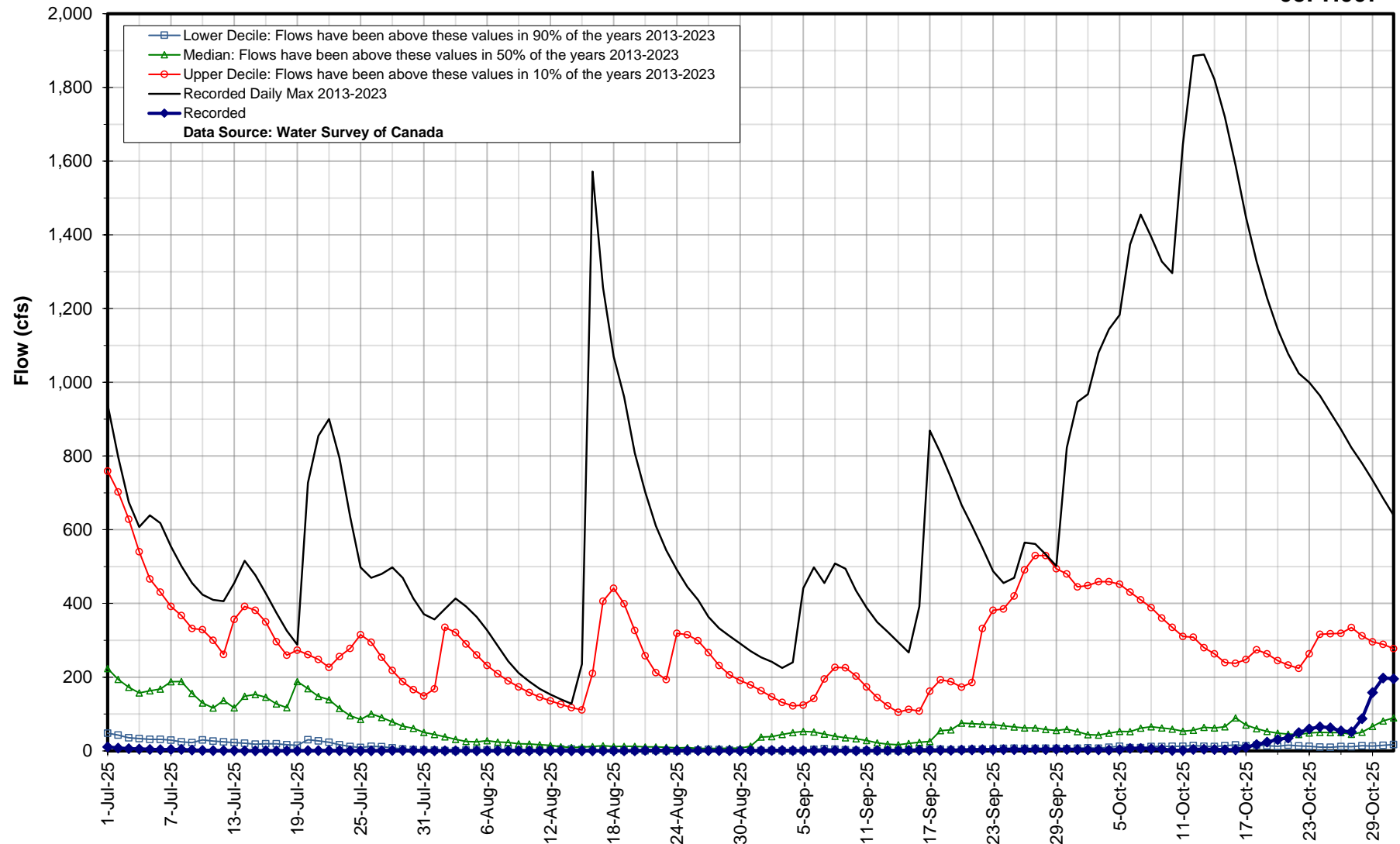


Hydrologic Forecast Centre - Manitoba Transportation and Infrastructure

Birch River near Prawda

Oct 31, 2025 : 196 cfs

05PH007

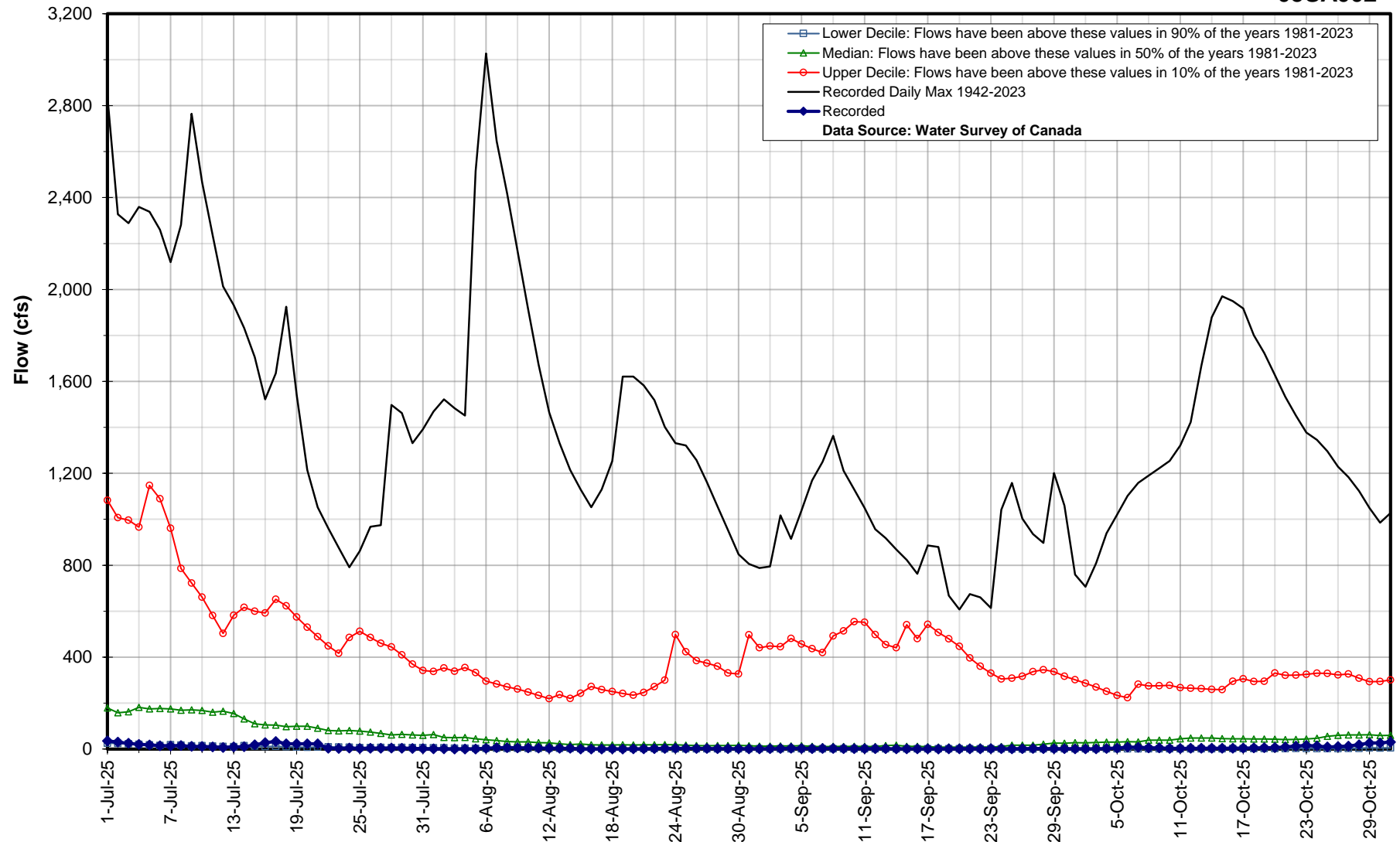


Hydrologic Forecast Centre - Manitoba Transportation and Infrastructure

Brokenhead River near Beausejour

Oct 31, 2025 : 31 cfs

05SA002



Hydrologic Forecast Centre - Manitoba Transportation and Infrastructure

Devils Creek near Libau

Oct 31, 2025 : 3 cfs

05OJ016

