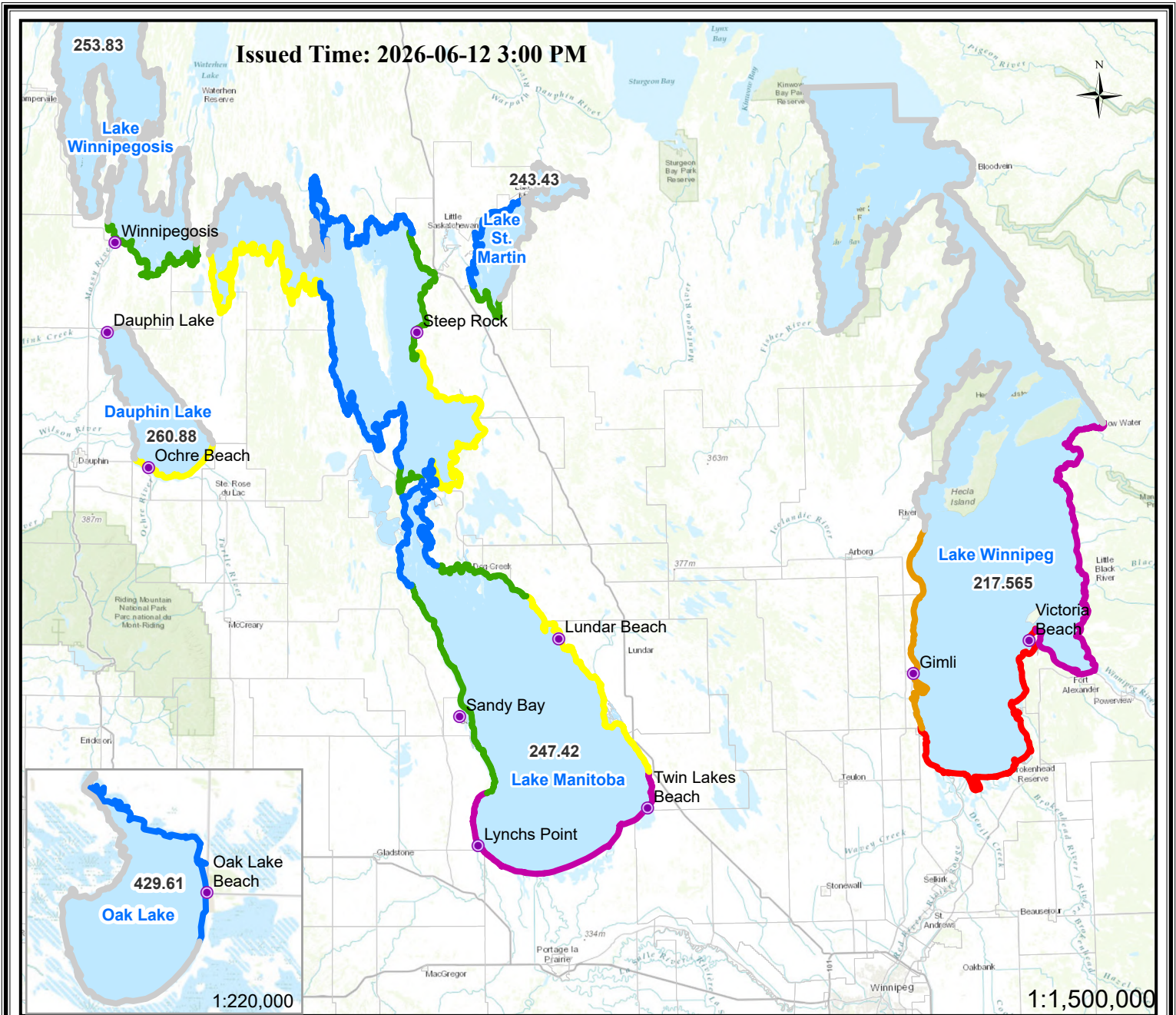


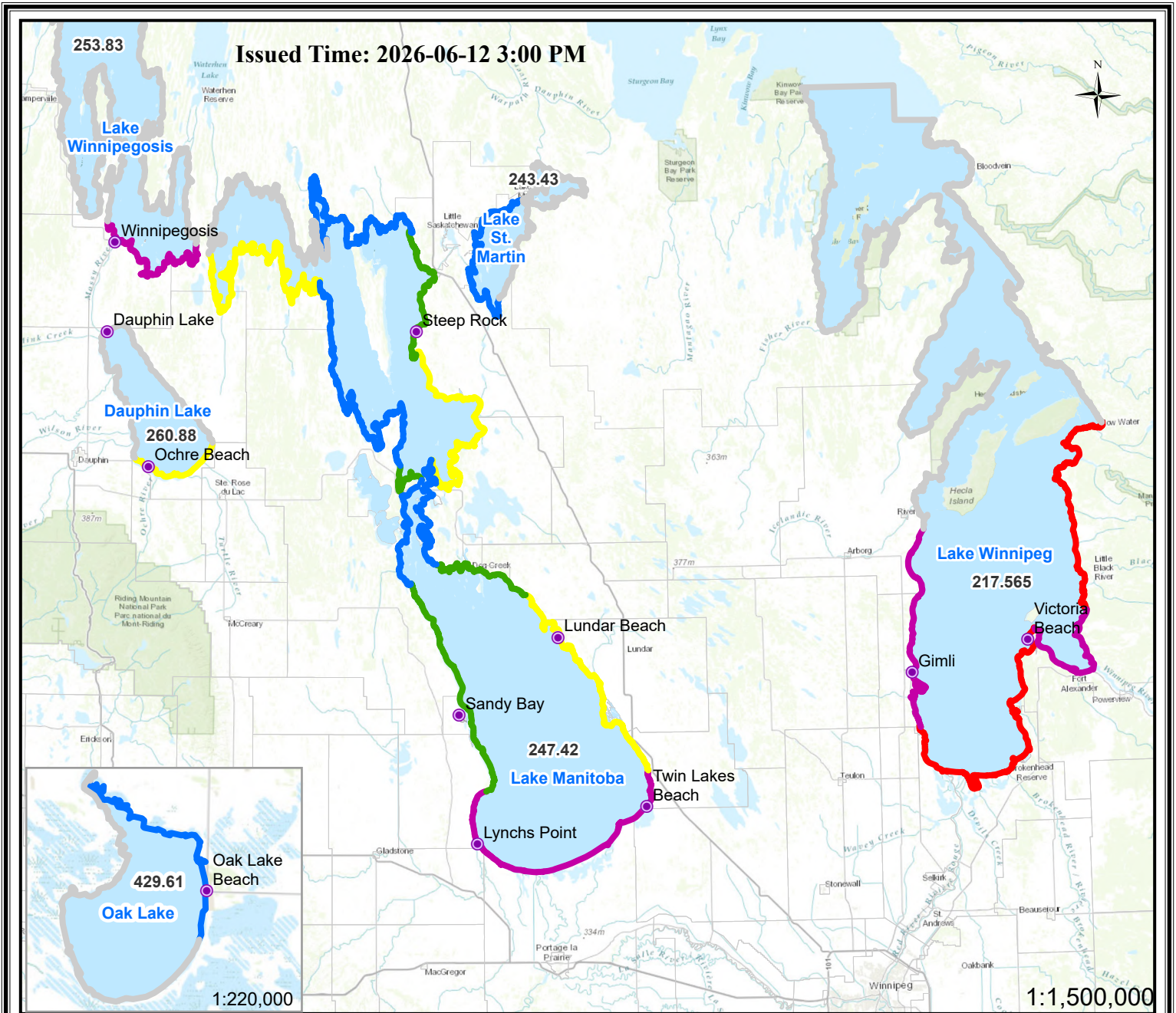
Manitoba Lake Wind Effect Forecast for June 13 AM, 2026



Location	Ave.Dir.from North (degree)	Ave. Speed (km/h)	Location	Ave.Dir.from North (degree)	Ave. Speed (km/h)	Wind Effect Alert Categories	
Dauphin Lake	NW(319)	40	Manipogo area	NW(328)	39	Severe	Crest level increase will be greater than 1.5 meters; Wave action will be very significant and forceful.
MB Lake west side - Sandy Bay	NW(303)	42	Crane River area	NW(319)	33		
MB Lake south side - Twin Beaches	NW(310)	50	Wpg Lake - Victoria Beach	NW(322)	44	High	Crest level increase will be in a range 0.9 ~ 1.5 meters; Wave action will be significant.
MB Lake middle - Vogar/The Narrows	NW(314)	40	Wpg Lake - Gimli Beach	NW(326)	33		
MB Lake east side - Lundar Beach	NW(312)	46	Wpg Lake - Alberta Beach	NW(320)	39	Moderate-High	Crest level increase will be in a range 0.6 ~ 0.9 meters; Wave action will be considerable.
Northend 1	NW(337)	20	Wpg Lake - O'Hanly	NW(322)	42		
Northend 2	NW(331)	18	Wpg Lake south side	NW(325)	43	Moderate	Crest level increase will be in a range 0.3 ~ 0.6 meters; Wave action will be moderate.
Guynemer	NW(320)	34	Lake Winnipegosis south side	NW(326)	41		
The Bluff	NW(318)	39	Oak Lake east side community	NW(319)	29	Low	Crest level increase will be less than 0.3 meters; Wave action will be low.
Wapah area	NW(314)	40	Oak Lake north side community	NW(319)	28		
Dolly Creek area	NW(320)	40	Lake St. Martin north side	N(341)	25	No Alert	Wind set-up and wave action are predicted to be light.
Mathesons Point	NW(325)	40	Lake St. Martin west side	N(341)	22		
Steep rock	NW(324)	37	Lake St. Martin southwest side	N(342)	30	No Data	Wind effect data not available.
Fairford area	N(338)	30	Lake St. Martin south Side	N(342)	30		

Note: All water levels labeled within the lakes are current wind eliminated lake levels provided in meters

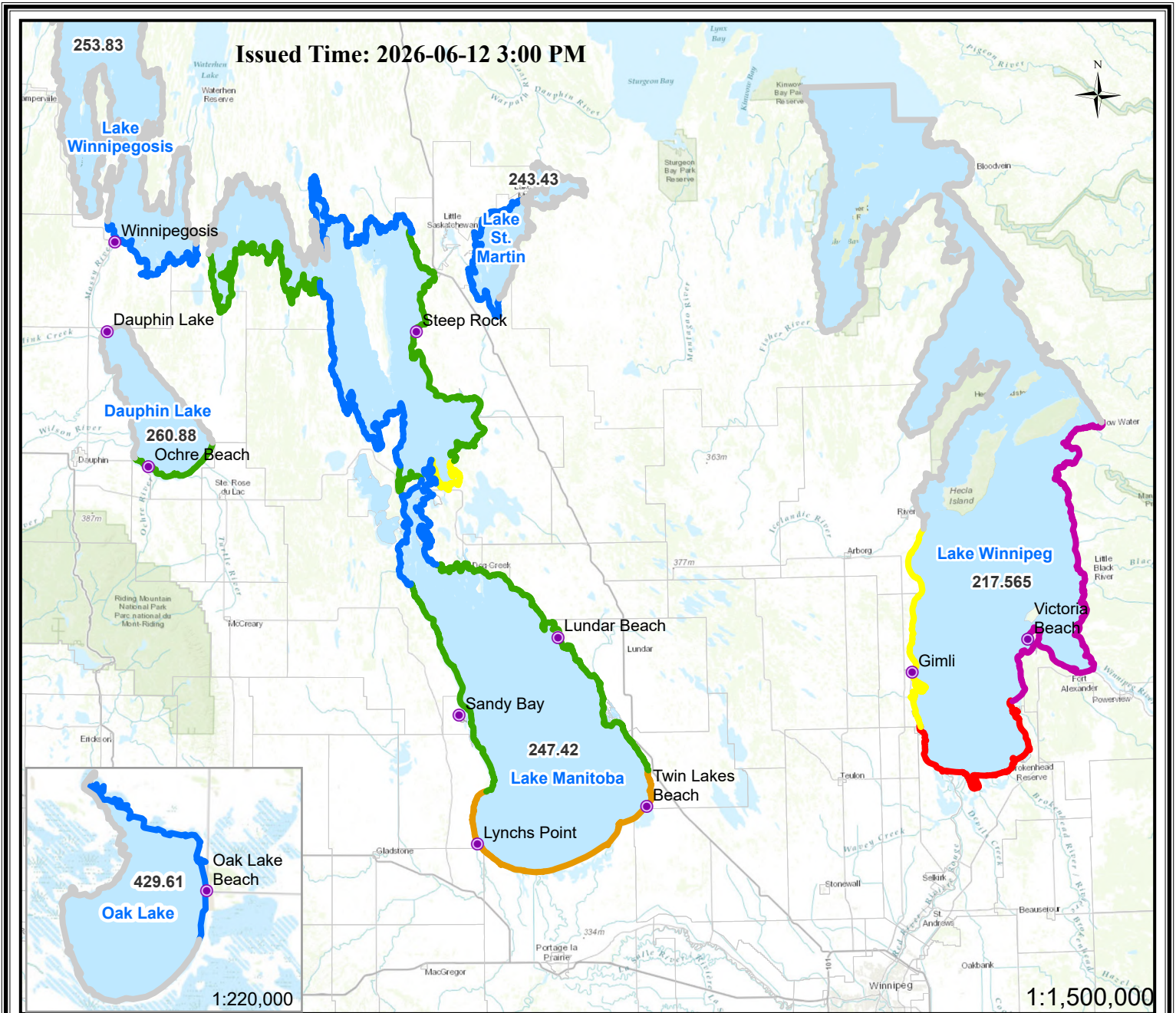
Manitoba Lake Wind Effect Forecast for June 13 PM, 2026



Location	Ave.Dir.from North (degree)	Ave. Speed (km/h)	Location	Ave.Dir.from North (degree)	Ave. Speed (km/h)	Wind Effect Alert Categories	
Dauphin Lake	N(344)	34	Manipogo area	NW(333)	40	Severe	Crest level increase will be greater than 1.5 meters; Wave action will be very significant and forceful.
MB Lake west side - Sandy Bay	NW(332)	45	Crane River area	NW(330)	36		
MB Lake south side - Twin Beaches	NW(330)	48	Wpg Lake - Victoria Beach	NW(335)	47	High	Crest level increase will be in a range 0.9 ~ 1.5 meters; Wave action will be significant.
MB Lake middle - Vogar/The Narrows	NW(330)	40	Wpg Lake - Gimli Beach	NW(337)	35		
MB Lake east side - Lundar Beach	NW(332)	44	Wpg Lake - Alberta Beach	NW(335)	43	Moderate-High	Crest level increase will be in a range 0.6 ~ 0.9 meters; Wave action will be considerable.
Northend 1	NW(330)	24	Wpg Lake - O'Hanly	NW(332)	46		
Northend 2	NW(331)	23	Wpg Lake south side	N(340)	45	Moderate	Crest level increase will be in a range 0.3 ~ 0.6 meters; Wave action will be moderate.
Guynemer	NW(329)	37	Lake Winnipegosis south side	N(339)	37		
The Bluff	NW(329)	40	Oak Lake east side community	NW(335)	27	Low	Crest level increase will be less than 0.3 meters; Wave action will be low.
Wapah area	NW(329)	43	Oak Lake north side community	NW(334)	26		
Dolly Creek area	NW(330)	42	Lake St. Martin north side	NW(330)	24	No Alert	Wind set-up and wave action are predicted to be light.
Mathesons Point	NW(330)	41	Lake St. Martin west side	NW(331)	24		
Steep rock	NW(331)	39	Lake St. Martin southwest side	NW(332)	31	No Data	Wind effect data not available.
Fairford area	NW(331)	33	Lake St. Martin south Side	NW(333)	30		

Note: All water levels labeled within the lakes are current wind eliminated lake levels provided in meters

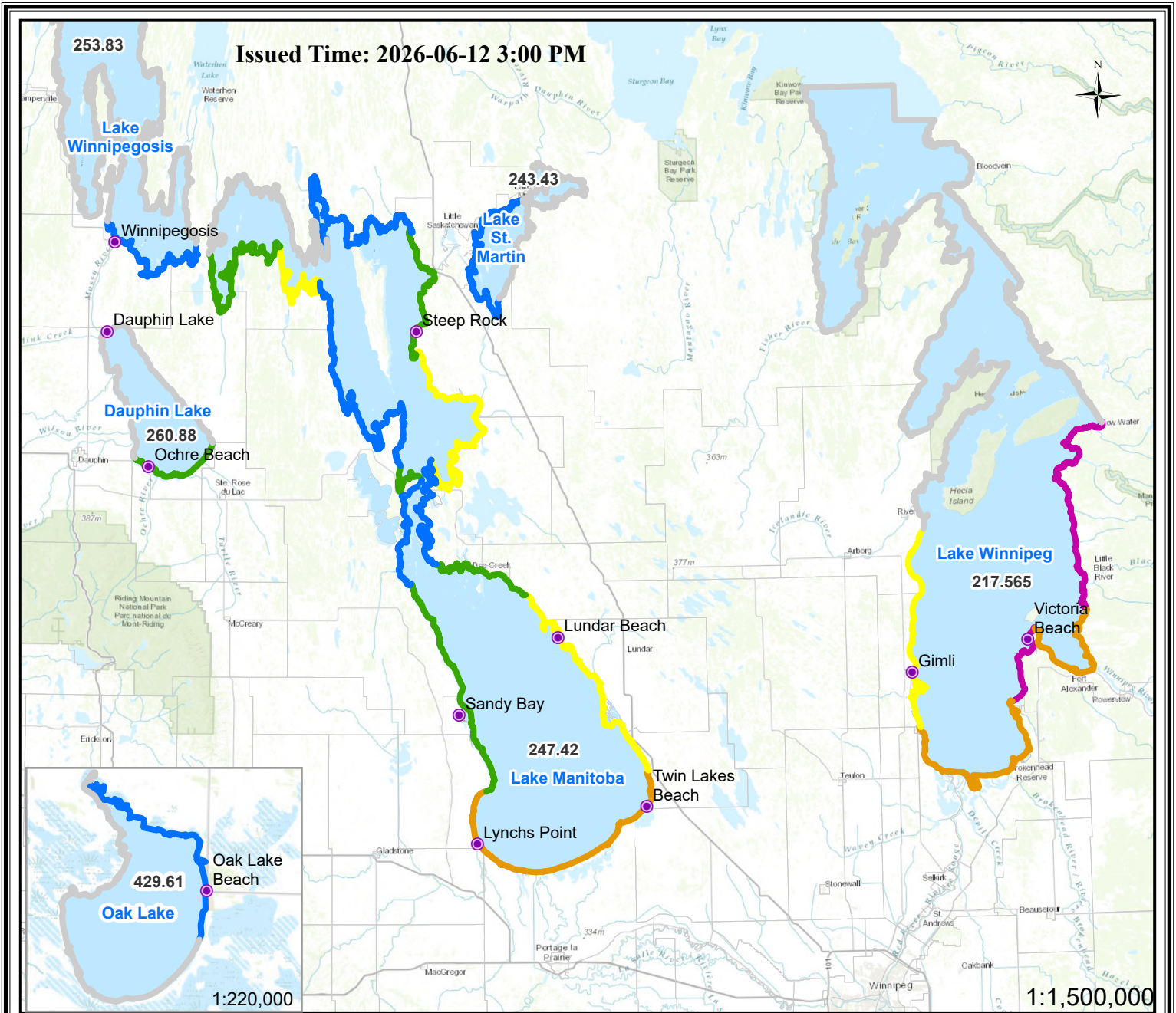
Manitoba Lake Wind Effect Forecast for June 14 AM, 2026



Location	Ave.Dir.from North (degree)	Ave. Speed (km/h)	Location	Ave.Dir.from North (degree)	Ave. Speed (km/h)	Wind Effect Alert Categories	
Dauphin Lake	NW(314)	26	Manipogo area	NW(321)	29	Severe	Crest level increase will be greater than 1.5 meters; Wave action will be very significant and forceful.
MB Lake west side - Sandy Bay	N(339)	34	Crane River area	NW(320)	26		
MB Lake south side - Twin Beaches	N(349)	38	Wpg Lake - Victoria Beach	NW(332)	41	High	Crest level increase will be in a range 0.9 ~ 1.5 meters; Wave action will be significant.
MB Lake middle - Vogar/The Narrows	NW(324)	29	Wpg Lake - Gimli Beach	NW(317)	25		
MB Lake east side - Lundar Beach	NW(328)	31	Wpg Lake - Alberta Beach	NW(336)	37	Moderate-High	Crest level increase will be in a range 0.6 ~ 0.9 meters; Wave action will be considerable.
Northend 1	NW(322)	16	Wpg Lake - O'Hanly	NW(335)	36		
Northend 2	NW(320)	15	Wpg Lake south side	NW(334)	41	Moderate	Crest level increase will be in a range 0.3 ~ 0.6 meters; Wave action will be moderate.
Guynemer	NW(322)	27	Lake Winnipegosis south side	NW(330)	27		
The Bluff	NW(322)	30	Oak Lake east side community	NW(319)	17	Low	Crest level increase will be less than 0.3 meters; Wave action will be low.
Wapah area	N(340)	32	Oak Lake north side community	NW(318)	16		
Dolly Creek area	NW(327)	31	Lake St. Martin north side	NW(321)	19	No Alert	Wind set-up and wave action are predicted to be light.
Mathesons Point	NW(326)	31	Lake St. Martin west side	NW(323)	17		
Steep rock	NW(324)	29	Lake St. Martin southwest side	NW(334)	23	No Data	Wind effect data not available.
Fairford area	NW(322)	24	Lake St. Martin south Side	NW(336)	24		

Note: All water levels labeled within the lakes are current wind eliminated lake levels provided in meters

Manitoba Lake Wind Effect Forecast for June 14 PM, 2026



Location	Ave.Dir.from North (degree)	Ave. Speed (km/h)	Location	Ave.Dir.from North (degree)	Ave. Speed (km/h)	Wind Effect Alert Categories	
Dauphin Lake	NW(323)	25	Manipogo area	NW(324)	32	Severe	Crest level increase will be greater than 1.5 meters; Wave action will be very significant and forceful.
MB Lake west side - Sandy Bay	NW(331)	37	Crane River area	NW(322)	31		
MB Lake south side - Twin Beaches	NW(328)	38	Wpg Lake - Victoria Beach	NW(332)	36	High	Crest level increase will be in a range 0.9 ~ 1.5 meters; Wave action will be significant.
MB Lake middle - Vogar/The Narrows	NW(325)	35	Wpg Lake - Gimli Beach	NW(327)	25		
MB Lake east side - Lundar Beach	NW(323)	41	Wpg Lake - Alberta Beach	NW(331)	33	Moderate-High	Crest level increase will be in a range 0.6 ~ 0.9 meters; Wave action will be considerable.
Northend 1	NW(324)	23	Wpg Lake - O'Hanly	NW(328)	37		
Northend 2	NW(321)	21	Wpg Lake south side	NW(331)	31	Moderate	Crest level increase will be in a range 0.3 ~ 0.6 meters; Wave action will be moderate.
Guynemer	NW(322)	32	Wpg Lake Winnipegosis south side	NW(331)	25		
The Bluff	NW(322)	36	Oak Lake east side community	NW(322)	22	Low	Crest level increase will be less than 0.3 meters; Wave action will be low.
Wapah area	NW(325)	37	Oak Lake north side community	NW(323)	21		
Dolly Creek area	NW(322)	38	Lake St. Martin north side	NW(322)	25	No Alert	Wind set-up and wave action are predicted to be light.
Mathesons Point	NW(320)	38	Lake St. Martin west side	NW(326)	24		
Steep rock	NW(321)	35	Lake St. Martin southwest side	NW(327)	30	No Data	Wind effect data not available.
Fairford area	NW(322)	31	Lake St. Martin south Side	NW(327)	28		

Note: All water levels labeled within the lakes are current wind eliminated lake levels provided in meters