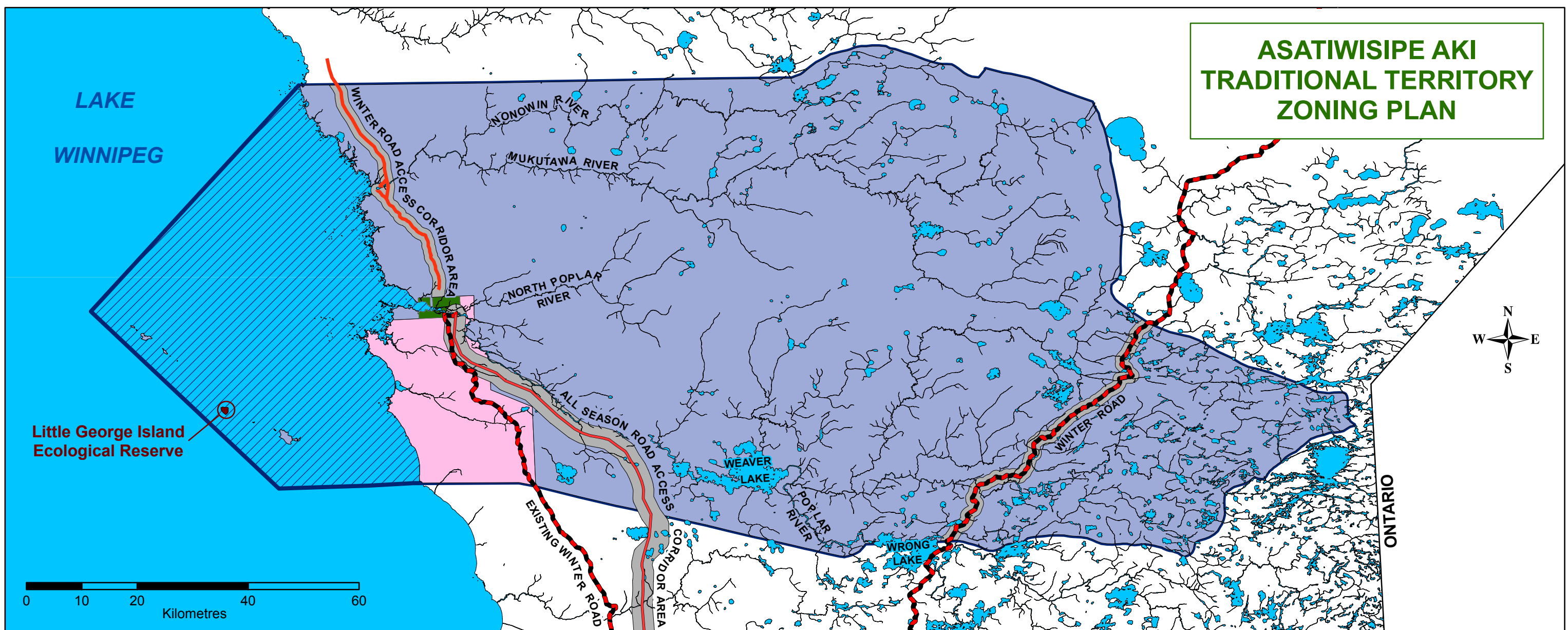


ASATIWISIPE AKI TRADITIONAL TERRITORY ZONING PLAN



- | | | |
|---|--|--|
| <p>ASATIWISIPE AKI TRADITIONAL TERRITORY</p> <p>Poplar River First Nation</p> <p>Asatiwisipe Aki Protected Area</p> <ul style="list-style-type: none"> ■ The main purpose of the zone is to protect natural landscapes and ecological processes while allowing traditional use of the land and recreational uses in accordance with guidelines established by the Mutual Land Relationship Board. ■ No logging, mining or development of oil, petroleum, natural gas or hydro-electric power facilities will be permitted. ■ Other resource based uses and associated facilities may be permitted in accordance with guidelines established by the Mutual Land Relationship Board. <p>Asatiwisipe Aki Protected Islands Area</p> <ul style="list-style-type: none"> ■ Only islands above the ordinary high water mark (OHWM) of Lake Winnipeg in this area are included. ■ The main purpose of the zone is to protect natural landscapes and ecological processes on the islands while allowing traditional use of the land and recreational uses in accordance with guidelines established by the Mutual Land Relationship Board. ■ No logging, mining or development of oil, petroleum natural gas or hydro-electric power facilities will be permitted. ■ Other resource based uses and associated facilities may be permitted in accordance with guidelines established by the Mutual Land Relationship Board. | <p>Asatiwisipe Aki Community Resource Area</p> <ul style="list-style-type: none"> ■ The main purpose of the zone is to ensure ecological processes continue while allowing traditional use of the land and local use of the resources and recreational uses in accordance with guidelines established by the Mutual Land Relationship Board. ■ Resource uses by the community that are anticipated and subject to specific approval by the Mutual Land Relationship Board include: <ul style="list-style-type: none"> ● gravel extraction ● community logging ● air strip development ● community saw mill development ■ The zone accommodates the main road access and hydro line to the community ■ No logging, mining or development of oil, petroleum, natural gas or hydro-electric power facilities will be permitted for commercial purposes. <p>Little George Island Ecological Reserve</p> <ul style="list-style-type: none"> ■ All those portions of Little George Island in Lake Winnipeg shown on Director of Surveys Plan No. 20253 are designated as an Ecological Reserve under The Ecological Reserves Act (Regulation 166/87) and are included in this zone. ■ Little George Island is a prime nesting site for colonial nesting birds including very large nesting populations of Caspian Terns and Common Terns. ■ Traditional use of the land and resources is permitted in accordance with guidelines established by the Board. Other uses of the land and resources may be allowed by regulation or permit issued under The Ecological Reserves Act. | <p>Winter Road Access Corridor Area (width 2 km)</p> <ul style="list-style-type: none"> ■ The main purpose of the zone is to allow an area for winter road development, maintenance management and rerouting as required while ensuring that ecological process and traditional use of the land continues. ■ The width of the corridor is 2 kilometers. ■ The corridors are aligned to be consistent with the winter road alignments endorsed through the WNO process. ■ Road alignment within the corridor will require a clearing width of 20 meters. Resources for road construction can be acquired from within the corridor in accordance with guidelines established by the Mutual Land Relationship Board. ■ The Mutual Land Relationship Board may permit other compatible community and recreational uses and facilities within the corridor. ■ No logging, mining or development of oil, petroleum, natural gas or hydro-electric power facilities will be permitted for commercial use. <p>All Season Road Access Corridor Area</p> <ul style="list-style-type: none"> ■ Proposed All Season Road to be established within this Access Corridor Area. Further negotiations with Poplar River required to finalize the permanent all season road alignment. No logging, mining or development of oil, petroleum, natural gas or hydro-electric power facilities will be permitted for commercial use. |
|---|--|--|