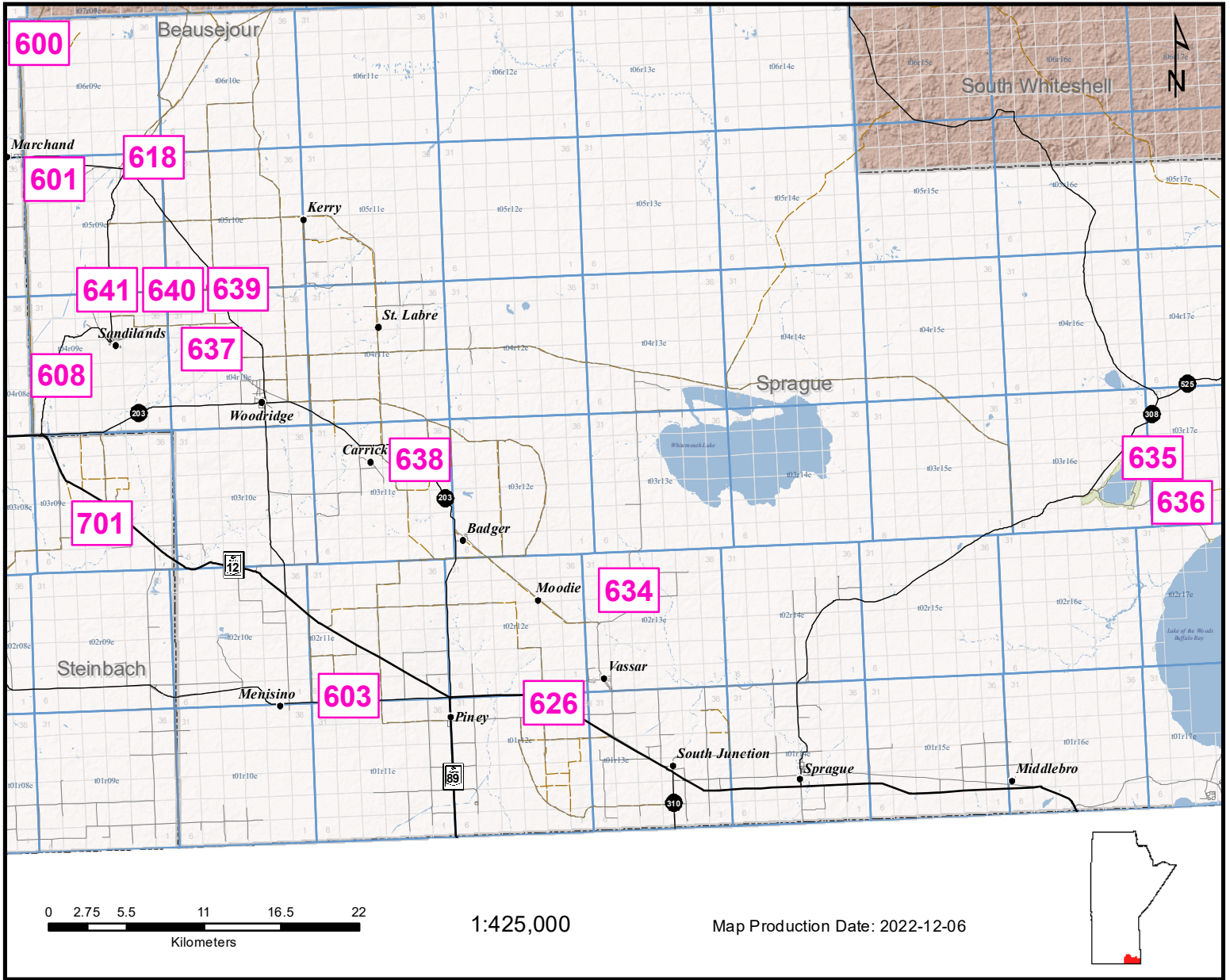
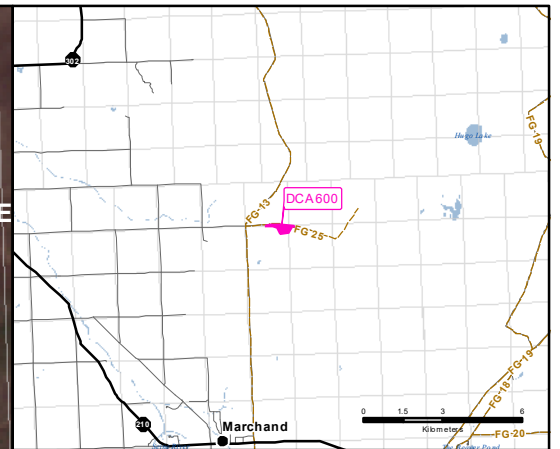


- SPRAGUE & STEINBACH - Designated Cutting Areas



DISTRICT	DCA ID	PRODUCT (FW = Fuelwood, PR = Post & Rail, XMAS = Christmas Trees/Boughs)	SEASON	ACCESS CONDITION	SUGGESTION	SEC-TWP-RGE
Sprague	600	Poplar, Black Spruce, Jack Pine, White Birch (FW)	All Season	Good	Truck	30-06-09E
	601	Tamarack (FW)	Winter	Fair	Snowmobile/Machine	31-05-9E
	603	Tamarack, Black Spruce (FW, PR)	Winter	Poor	Machine	5-02-11E
	608	Tamarack, Black Spruce (FW, PR)	Winter	Fair	Truck/Snowmobile	17-04-09E
	618	Poplar, Jack Pine (FW)	All Season	Good	Truck	35-05-09E
	626	Jack Pine (FW)	Summer	Fair	Truck	35-01-12E
	634	Black Spruce, Tamarack, Cedar (FW)	Winter	Fair	Truck	29-02-13E
	635	Poplar, Black Spruce, Jack Pine, White Birch (FW)	Summer/Winter	Poor	Truck	19-03-17E
	636	Poplar, Black Spruce, Jack Pine, White Birch (FW)	All Season	Fair	Truck	5-03-17E
	637	Jack Pine, Scots Pine, Red Pine (FW)	All Season	Fair	Truck	20-04-10E
	638	Jack Pine (FW)	All Season	Good	Truck	26-03-11E
	639	Jack Pine (FW)	All Season	Good	Truck/Snowmobile	4-05-10E
	640	Jack Pine (FW)	All Season	Good	Truck/Snowmobile	5-05-10E
	641	Jack Pine (FW)	All Season	Good	Truck	3-05-09E
Steinbach	701	Black Spruce, Tamarack, Cedar (FW)	All Season	Fair	Truck/Snowmobile	16-03-09E



DESIGNATED CUTTING AREA 600

Sprague

- FMU 24 -

Sec 30 - Twp 6 - Rge 9 E

 Cutting Area

Location:

From Marchand, travel east on Hwy 210 for 2 km to Fireguard 13. Travel north on Fireguard 13 for 8.2 km to Fireguard 25. Travel east on Fireguard 25 for 700 m.

General Instructions:

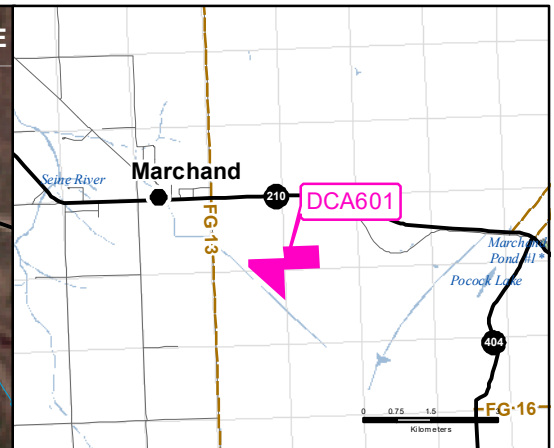
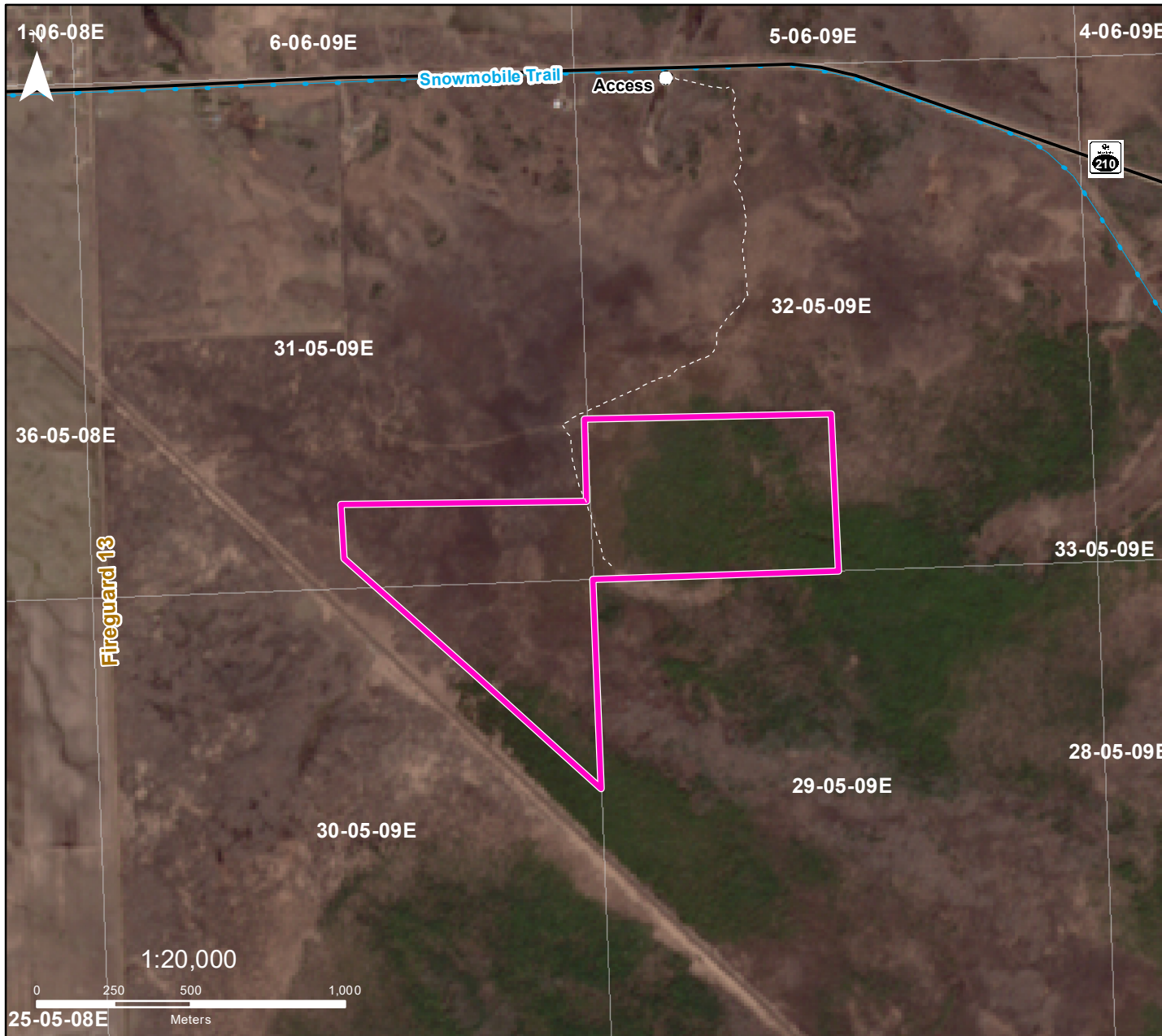
Any species (excluding Elm), green or dry, can be removed from the harvest areas. White Birch has a maximum harvest limit of 5m3

INFO:

NAD1983 UTM ZONE 14N

Forestry Branch
Agriculture and Resource Development

Dominant Species	Product	Species Condition	Season	Access Condition	Suggestion
Trembling Aspen 75%	Fuel Wood	Green/Dead Standing	All	Good	Truck
Black Spruce 15%	Fuel Wood	Green/Dead Standing	All	Good	Truck
Jack Pine 9%	Fuel Wood	Green/Dead Standing	All	Good	Truck
White Birch 1%	Fuel Wood	Green/Dead Standing	All	Good	Truck



DESIGNATED CUTTING AREA 601

Sprague

- FMU 24 -

Sec 31 - Twp 5 - Rge 9 E

 Cutting Area

Location:

From Marchand, travel east on Hwy 210 for 2.8 km to trail. Travel south on trail for 800 m. Trail entrance is next to Sandilands Provincial Forest sign.

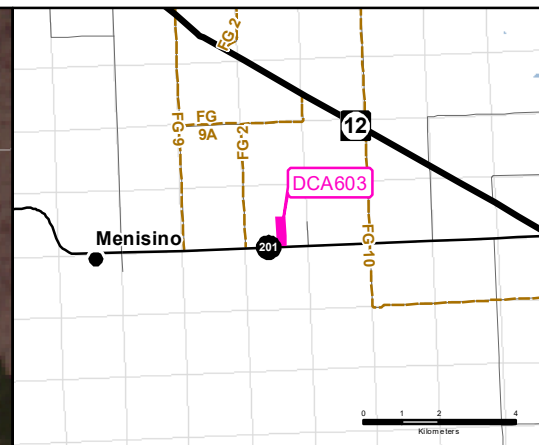
General Instructions:

Any species (excluding Elm), green or dry, can be removed from the harvest areas. White Birch has a maximum harvest limit of 5m³

INFO:

Dominant Species	Product	Species Condition	Season	Access Condition	Suggestion
Tamarack 100%	Fuel Wood	Green/Dead Standing	Winter	Fair	Snowmobile/Machine

NAD1983 UTM ZONE 14N
Forestry Branch
Agriculture and Resource Development



DESIGNATED CUTTING AREA 603

Sprague

- FMU 24 -

Sec 5 - Twp 2 - Rge 11E

 Cutting Area

Location:

From Piney, travel north on Hwy 89 for 1.2 km to Hwy 201. Travel west on Hwy 201 for 7.2 km.

General Instructions:

Any species (excluding Elm), green or dry, can be removed from the harvest areas. White Birch has a maximum harvest limit of 5m³

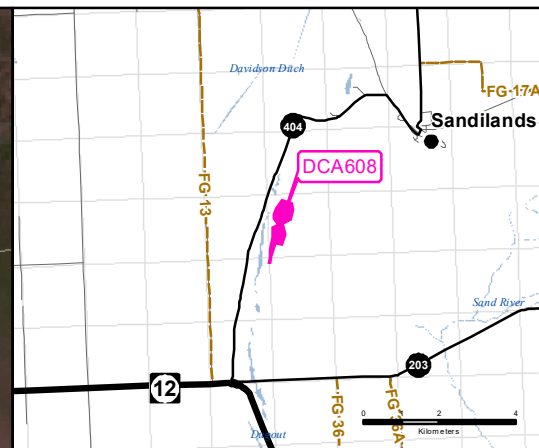
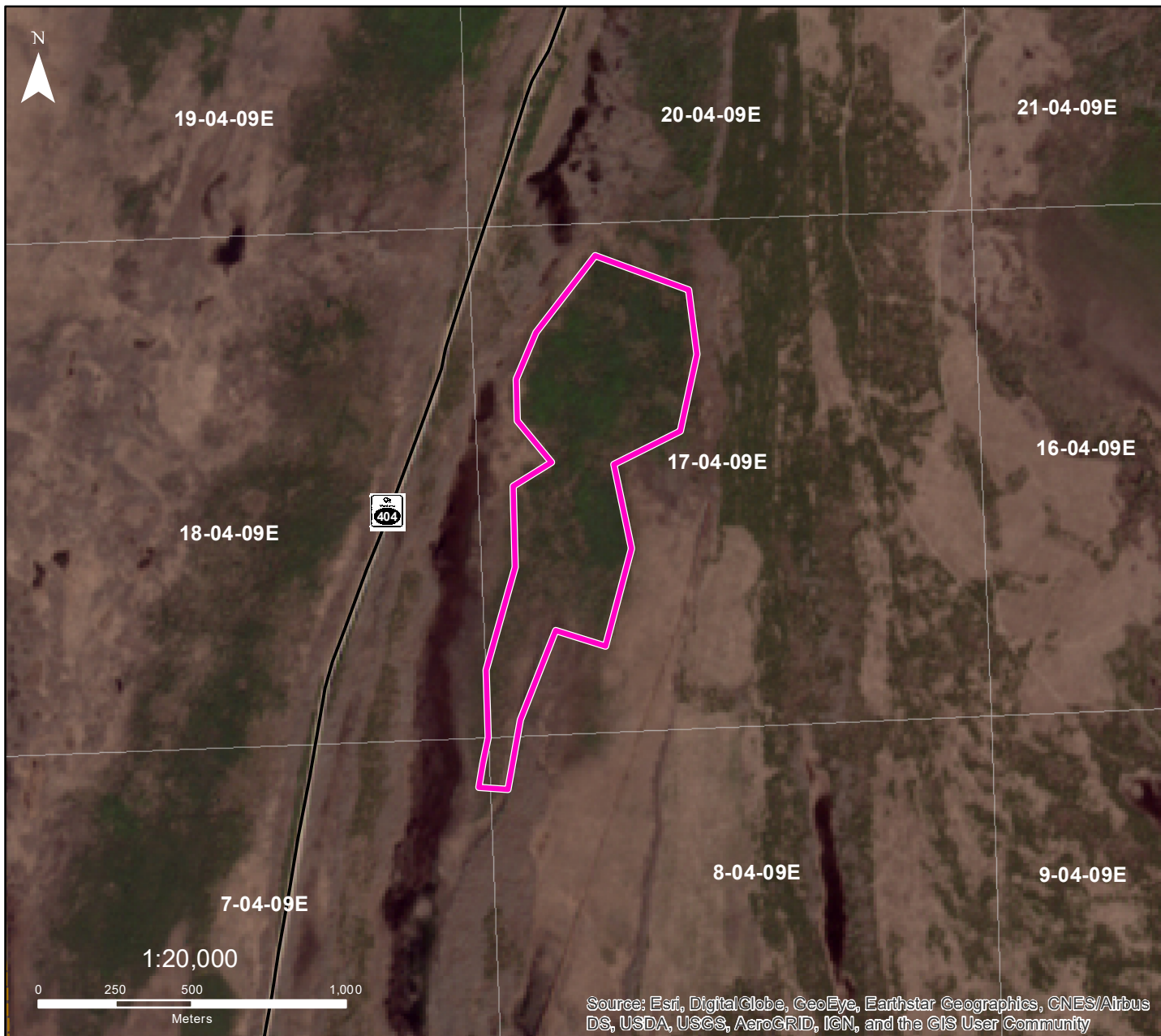
INFO: PROTECTED Wildlife Management Area south of highway. NO TRESPASSING

NAD1983 UTM ZONE 14N

Forestry Branch
Agriculture and Resource Development

Source: Esri, DigitalGlobe, GeoEye, Earthstar Geographics, CNES/Airbus DS, USDA, USGS, AeroGRID, IGN, and the GIS User Community

Dominant Species	Product	Species Condition	Season	Access Condition	Suggestion
Tamarack/Larch 90%	Fuel Wood, Post & Rail	Green	Winter	Poor	Machine
Black Spruce 10%	Fuel Wood, Post & Rail	Green	Winter	Poor	Machine



DESIGNATED CUTTING AREA 608

Sprague

- FMU 24 -

Sec 17 - Twp 4 - Rge 9 E

 Cutting Area

Location:

From Sandilands, travel west on Hwy 404 for 6.3 km to trail.

General Instructions:

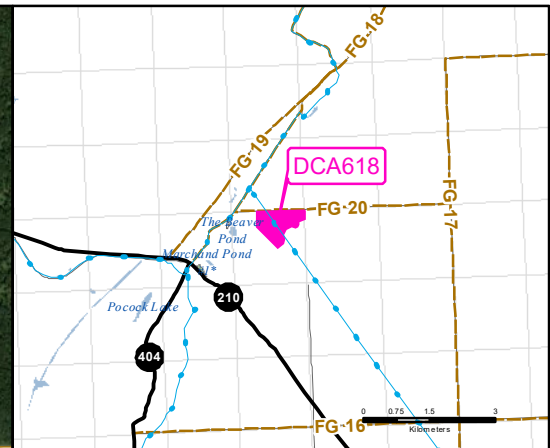
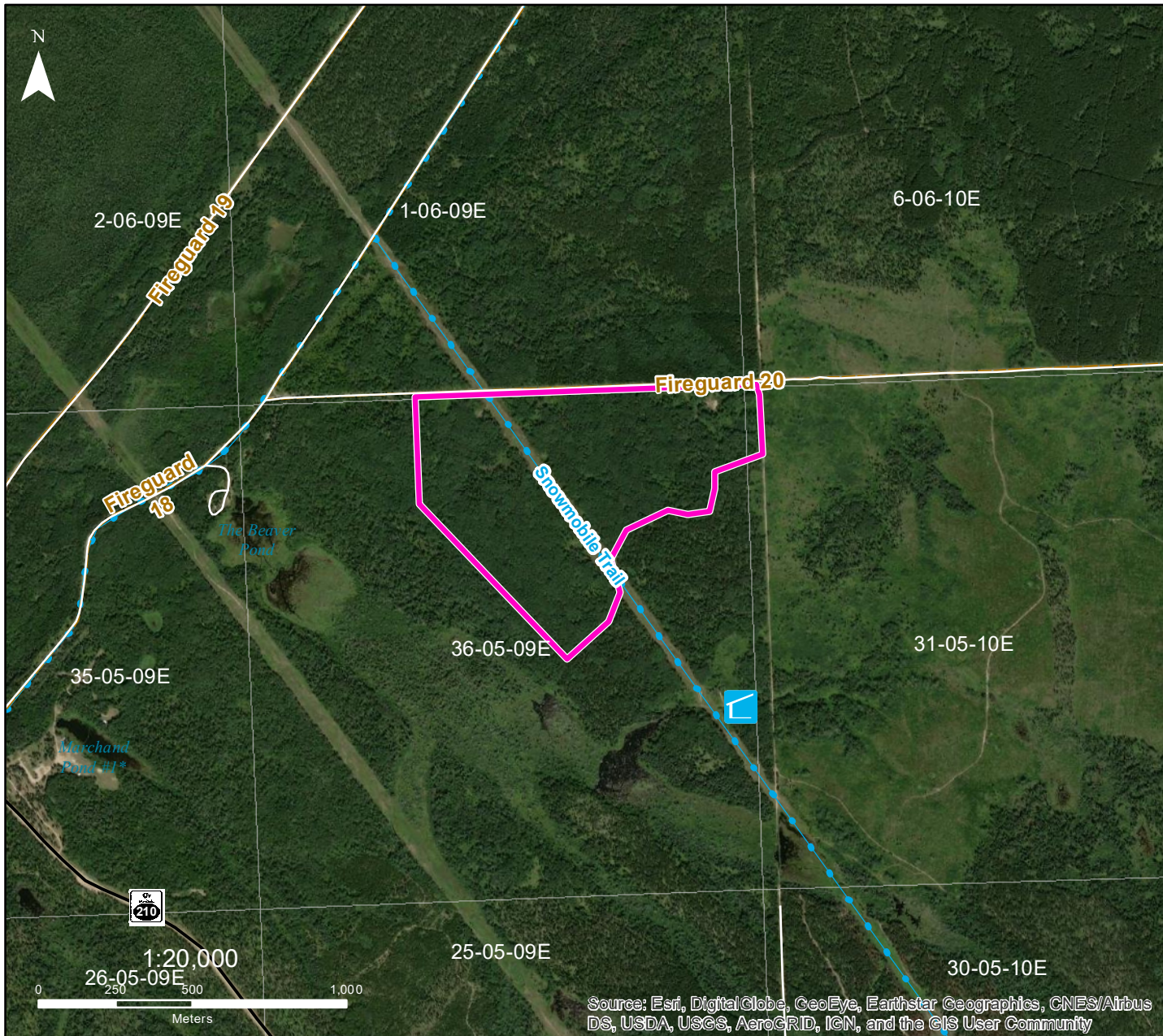
Any species (excluding Elm), green or dry, can be removed from the harvest areas. White Birch has a maximum harvest limit of 5m³

INFO: ACCESS NOT MAINTAINED

NAD1983 UTM ZONE 14N

Forestry Branch
Agriculture and Resource Development

Dominant Species	Product	Species Condition	Season	Access Condition	Suggestion
Tamarack 40%	Fuel Wood, Post & Rail	Green	Winter	Fair	Truck/Snowmobile
Black Spruce 60%	Fuel Wood, Post & Rail	Green/Dead Standing	Winter	Fair	Truck/Snowmobile



DESIGNATED CUTTING AREA 618

Sprague

- FMU 24 -

Sec 35 - Twp 5 - Rge 9 E

 Cutting Area

Location:

From jct of Hwy 210 & Hwy 404, travel east on Hwy 210 for 400 m to Fireguard 18. Travel north on Fireguard 18 for 1.6 km to Fireguard 20. Travel east on Fireguard 20 for 500 m.

General Instructions:

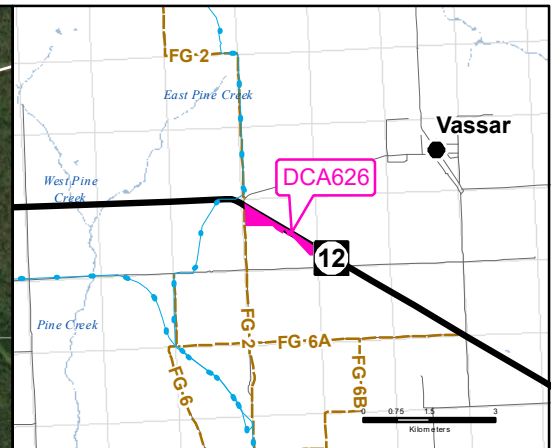
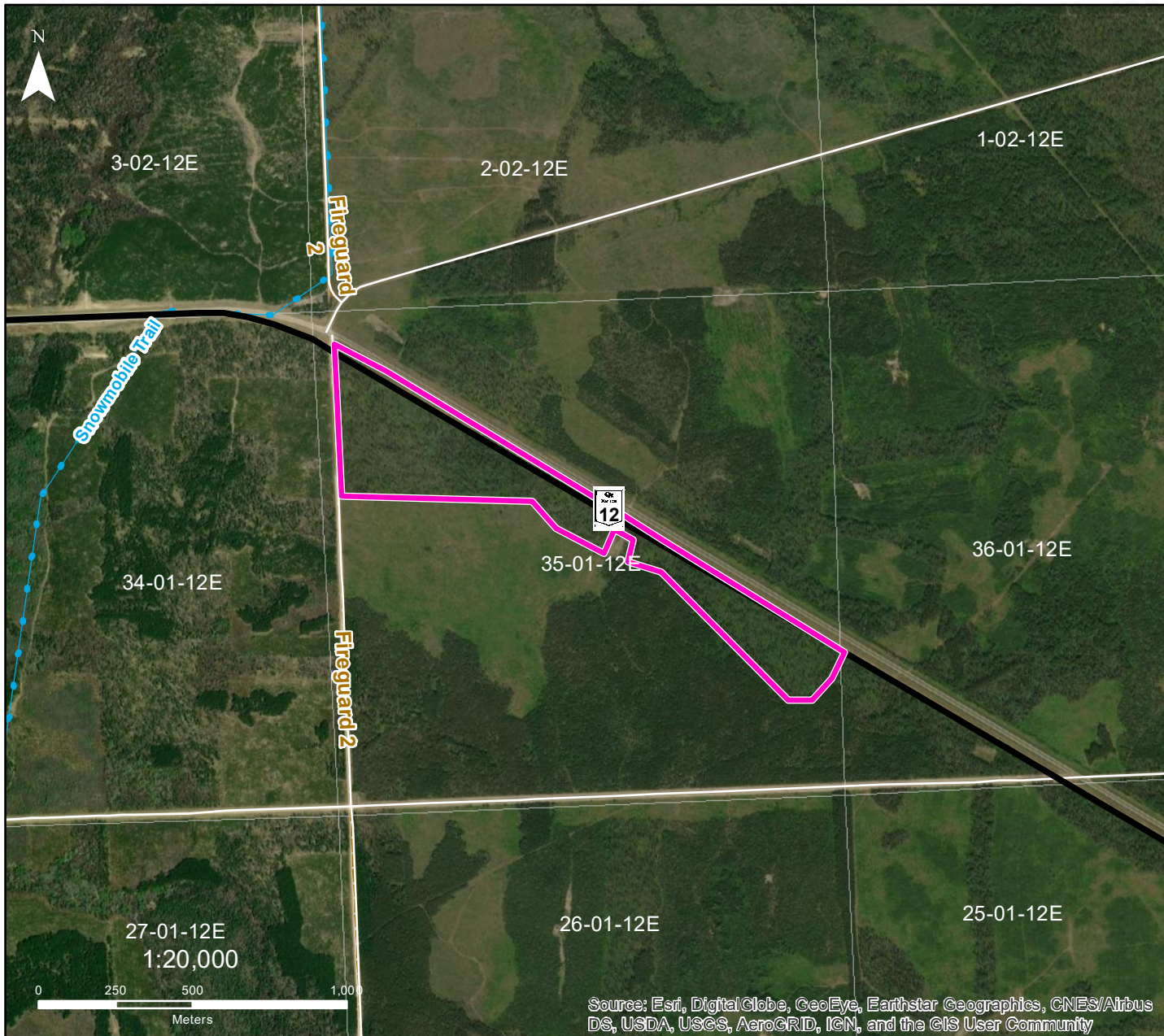
Any species (excluding Elm), green or dry, can be removed from the harvest areas. White Birch has a maximum harvest limit of 5m3

INFO: POPLAR ONLY! Do not leave debris on road/trail.

NAD1983 UTM ZONE 14N

Forestry Branch
Agriculture and Resource Development

Dominant Species	Product	Species Condition	Season	Access Condition	Suggestion
Trembling Aspen 90%	Fuel Wood	Green	All	Good	Truck
Jack Pine 10%	Fuel Wood	Green	All	Good	Truck



DESIGNATED CUTTING AREA 626

Sprague

- FMU 24 -

Sec 35 - Twp 1 - Rge 12E

Cutting Area

Location:

From Vassar travel 4.5km west down Vassar W Rd to PTH 12. DCA is located on east side of FireGuard 2, on south side of PTH 12

General Instructions:

Any species (excluding Elm), green or dry, can be removed from the harvest areas. White Birch has a maximum harvest limit of 5m³

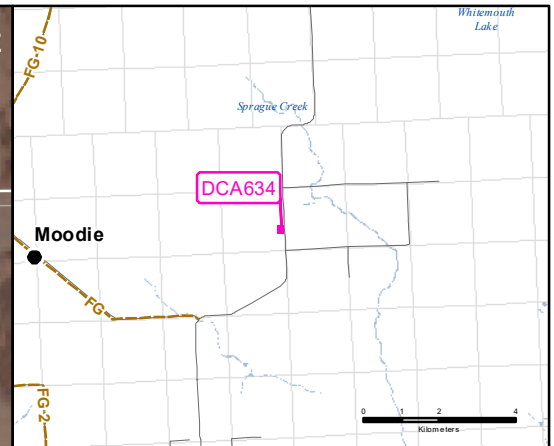
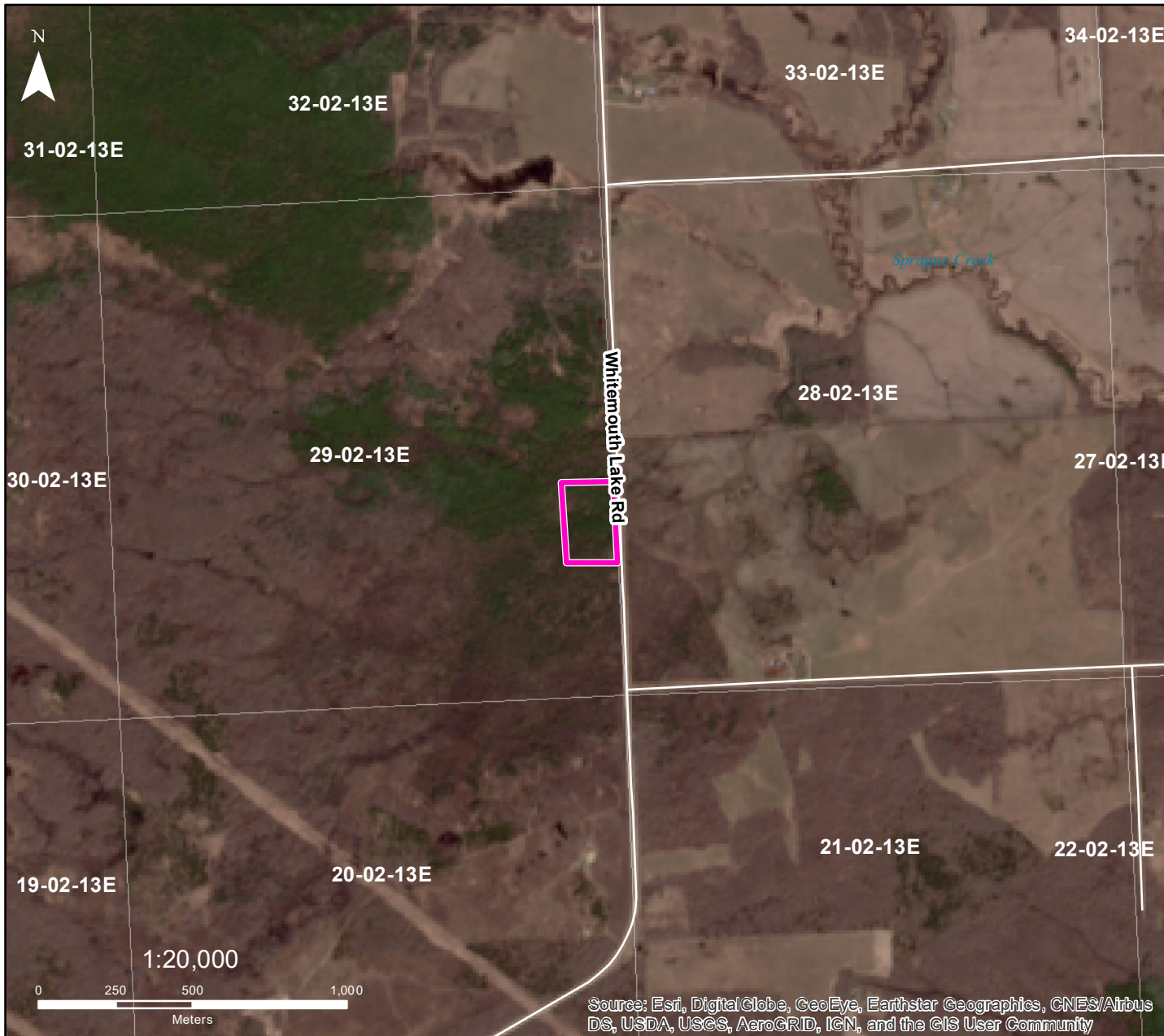
INFO:

NAD1983 UTM ZONE 14N

Forestry Branch
Agriculture and Resource Development

Source: Esri, DigitalGlobe, GeoEye, Earthstar Geographics, CNES/Airbus DS, USDA, USGS, AeroGRID, IGN, and the GIS User Community

Dominant Species	Product	Species Condition	Season	Access Condition	Suggestion
Jack Pine 95%	Fuel Wood	Green/Dead Standing	All	Good	
Trembling Aspen 3%	Fuel Wood	Green	All	Good	
White Birch 2%	Fuel Wood	Green/Dead Standing	All	Good	



DESIGNATED CUTTING AREA 634

Sprague

- FMU 24 -

Sec 29 - Twp 2 - Rge 13E

 Cutting Area

Location:

From Vassar, head north on Main Street (turns into Whitemouth Lake Road) for 9 km

General Instructions:

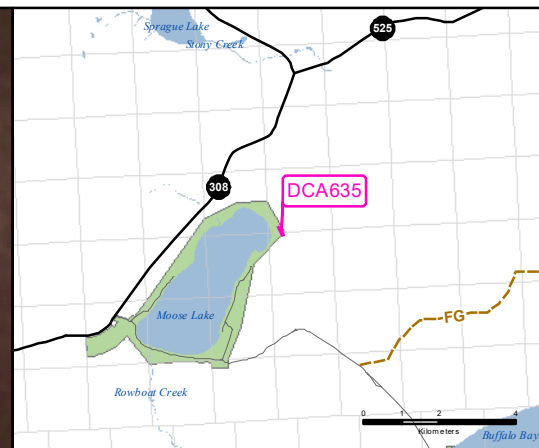
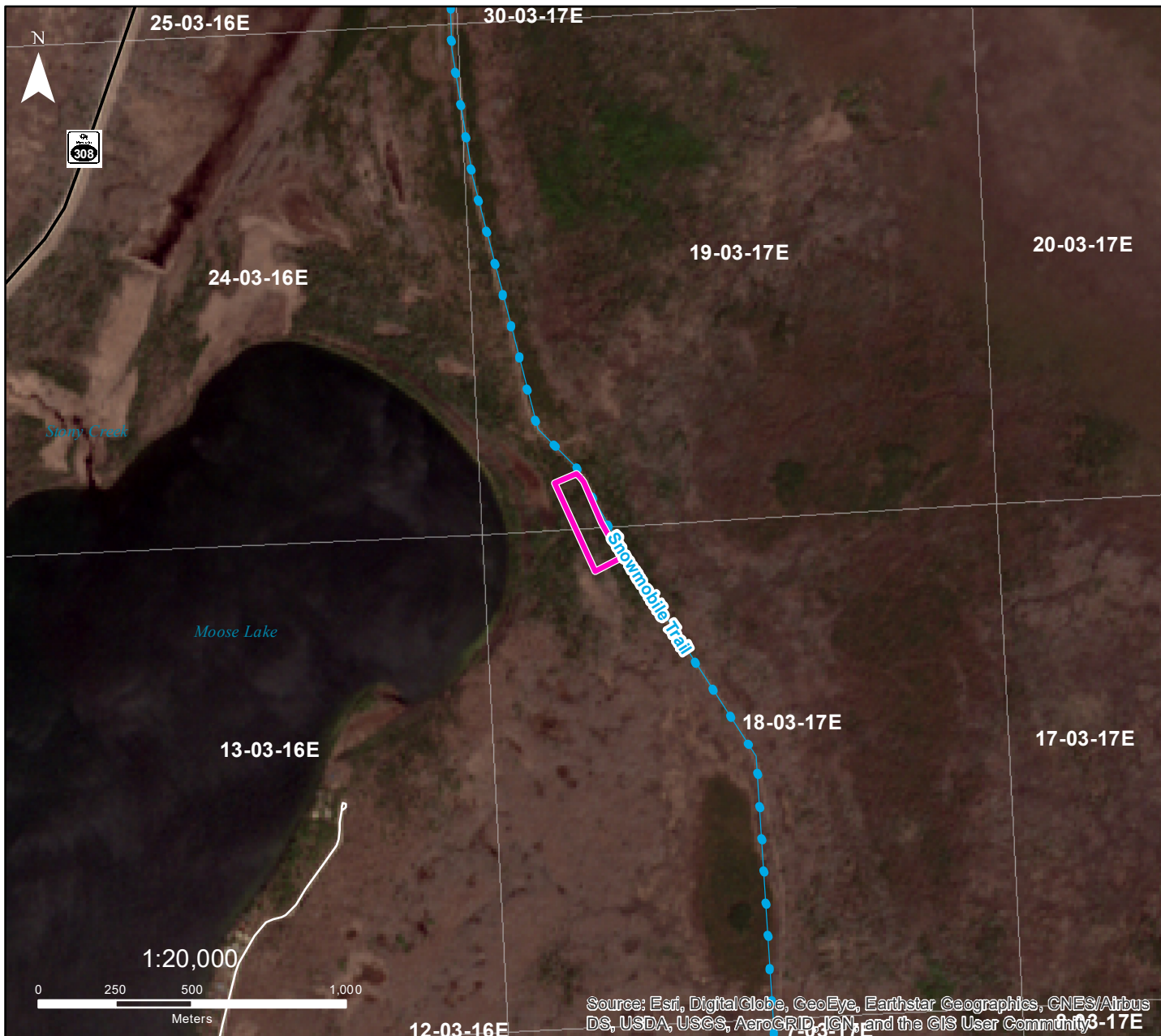
Any species (excluding Elm), green or dry, can be removed from the harvest areas. White Birch has a maximum harvest limit of 5m³

INFO: Condition is a mixture of dry standing and green

NAD1983 UTM ZONE 14N

Forestry Branch
Agriculture and Resource Development

Dominant Species	Product	Species Condition	Season	Access Condition	Suggestion
Black Spruce 40%	Fuel Wood	Green/Dead Standing	Winter	Fair	Truck
Tamarack 40%	Fuel Wood	Green	Winter	Fair	Truck
Eastern Cedar 20%	Fuel Wood	Green	Winter	Fair	Truck



DESIGNATED CUTTING AREA 635

Sprague

- FMU 24 -

Sec 19 - Twp 3 - Rge 17E

 Cutting Area

Location:

Located in the Moose Lake Provincial Park along the Scenic Drive. Approx. 2.5km north of Birch Point Rd. Park permit may be required. ACCESS FAIR UNTIL SNOW.

General Instructions:

Any species (excluding Elm), green or dry, can be removed from the harvest areas. White Birch has a maximum harvest limit of 5m³

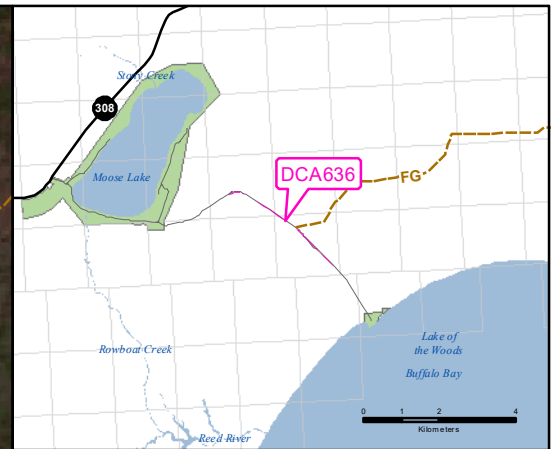
INFO: Max 2 cords of birch. Max 10 cords total. All debris to be cleared off road. No felling onto road. No cutting beyond 10m from ROW.

NAD1983 UTM ZONE 14N

Forestry Branch
Agriculture and Resource Development

Source: Esri, DigitalGlobe, GeoEye, Earthstar Geographics, CNES/Airbus DS, USDA, USGS, AeroGRID, IGN, and the GIS User Community

Dominant Species	Product	Species Condition	Season	Access Condition	Suggestion
Trembling Aspen 50%	Fuel Wood	Green	Summer/Winter	Fair/Poor	Truck
Black Spruce 30%	Fuel Wood	Green	Summer/Winter	Fair/Poor	Truck
Jack Pine 10%	Fuel Wood	Green	Summer/Winter	Fair/Poor	Truck
White Birch 10%	Fuel Wood	Green	Summer/Winter	Fair/Poor	Truck



DESIGNATED CUTTING AREA 636

Sprague

- FMU 24 -

Sec 5 - Twp 3 - Rge 17E

Cutting Area

Location:

Cutting Area begins at the Junction of the Scenic Drive and Birch Point Road. The area is situated on the south side of the Birch Point Road for approx. 3.5km. Park permit may be required.

General Instructions:

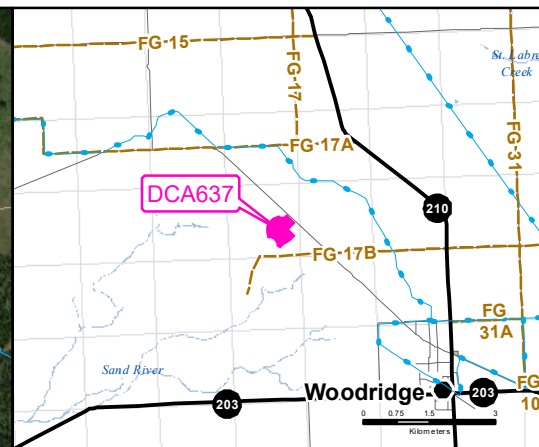
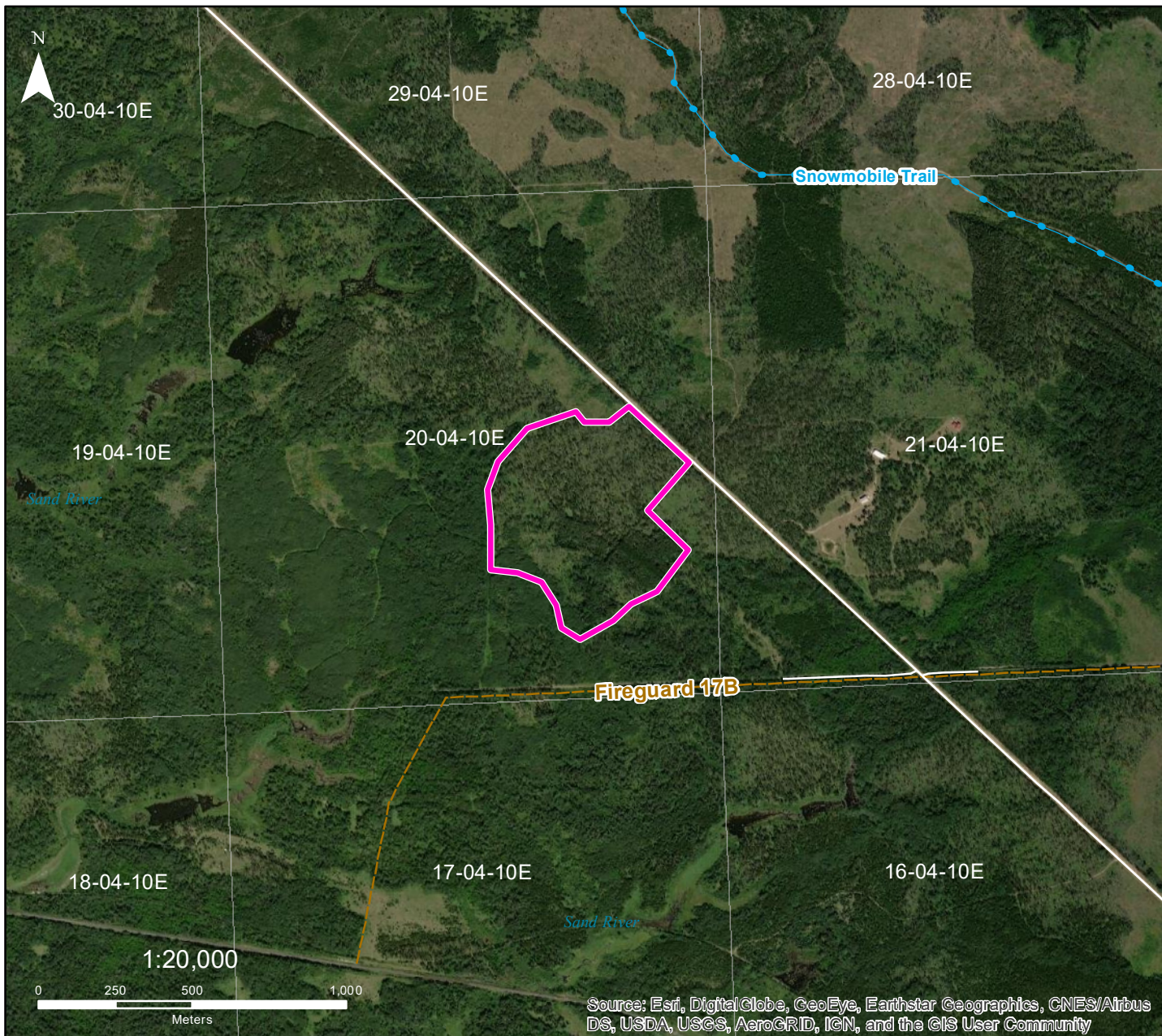
Any species (excluding Elm), green or dry, can be removed from the harvest areas. White Birch has a maximum harvest limit of 5m³

INFO: Max 2 cords of birch. Max 10 cords total. All debris to be cleared off road. No felling onto roadway. No harvesting beyond 5m of gravel

NAD1983 UTM ZONE 14N

Forestry Branch
Agriculture and Resource Development

Dominant Species	Product	Species Condition	Season	Access Condition	Suggestion
Trembling Aspen 50%	Fuel Wood	Green	All	Fair	Truck
Black Spruce 30%	Fuel Wood	Green	All	Fair	Truck
Jack Pine 10%	Fuel Wood	Green	All	Fair	Truck
White Birch 10%	Fuel Wood	Green	All	Fair	Truck



DESIGNATED CUTTING AREA 637

Sprague

- FMU 24 -

Sec 20 - Twp 4 - Rge 10E

 Cutting Area

Location:

From Woodridge (PR210) travel west on the Sandilands Main Market Road approx. 4.5km. Area is located on the south side of road. Access NOT maintained. DO NOT use plantation to access cutting area.

General Instructions:

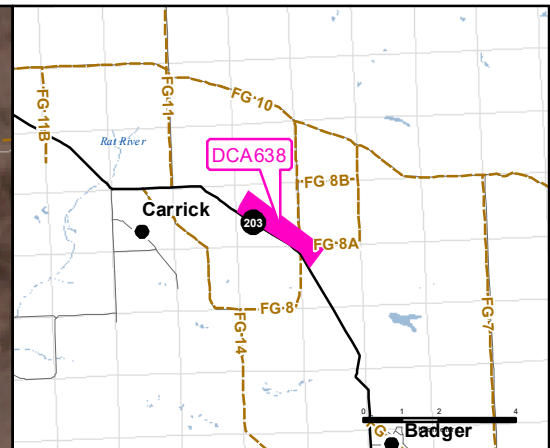
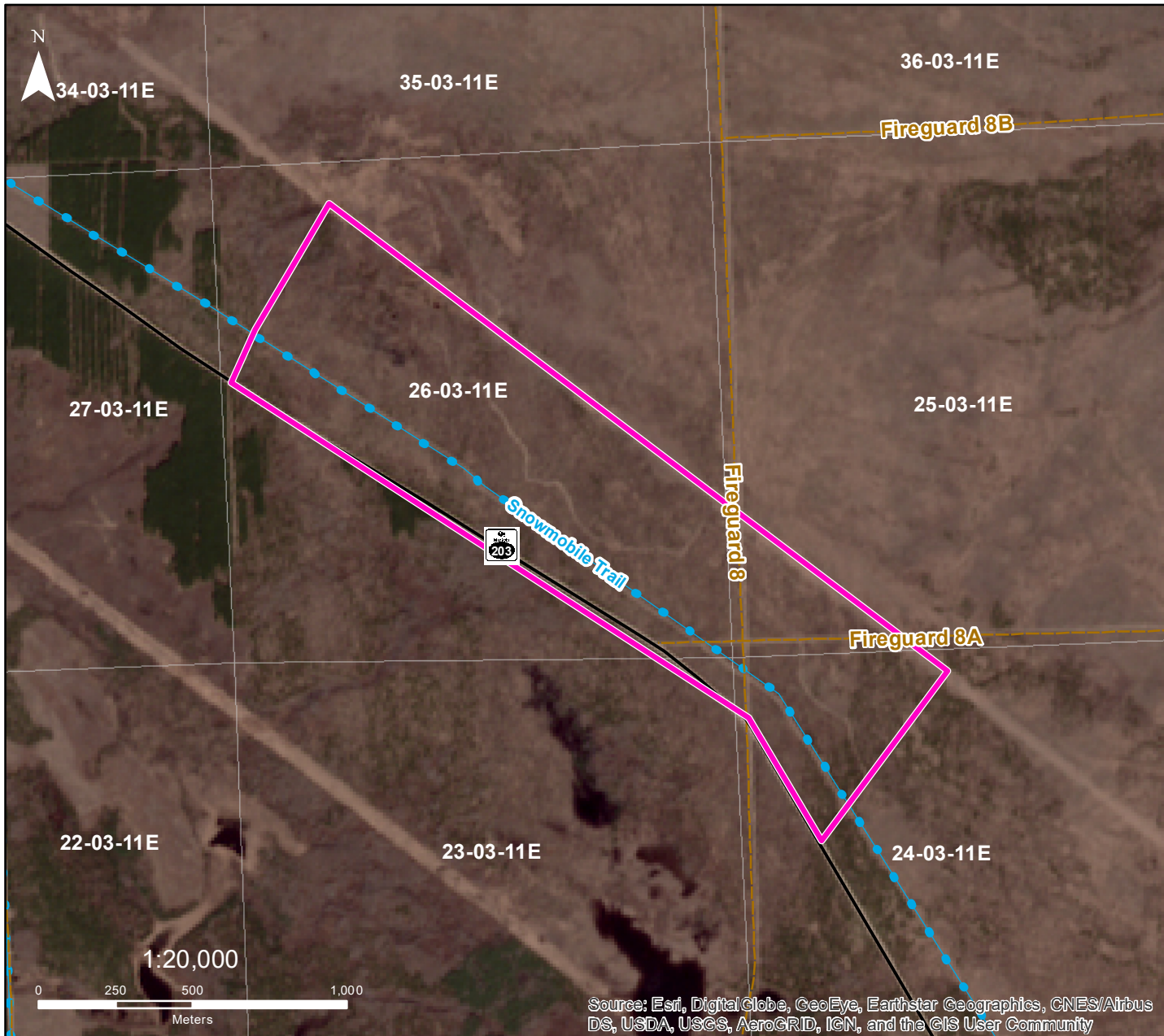
Any species (excluding Elm), green or dry, can be removed from the harvest areas. White Birch has a maximum harvest limit of 5m³

INFO: Max 10 Cords total. No felling onto road, and clear all debris. PRIVATE LAND adjacent to area DO NOT ACCESS THROUGH PLANTATION.

NAD1983 UTM ZONE 14N

Forestry Branch
Agriculture and Resource Development

Dominant Species	Product	Species Condition	Season	Access Condition	Suggestion
Jack Pine 80%	Fuel Wood	Green/Dead Standing	All	Fair	Truck
Scots Pine 10%	Fuel Wood	Dead Standing	All	Fair	Truck
Red Pine 10%	Fuel Wood	Dead Standing	All	Fair	Truck



DESIGNATED CUTTING AREA 638

Sprague

- FMU 24 -

Sec 26 - Twp 3 - Rge 11E

 Cutting Area

Location:

From Woodridge, travel east on Hwy 203 for approx. 12km. Cutting Area on North Side of Highway. Area between Hydro ROW and Hwy.

General Instructions:

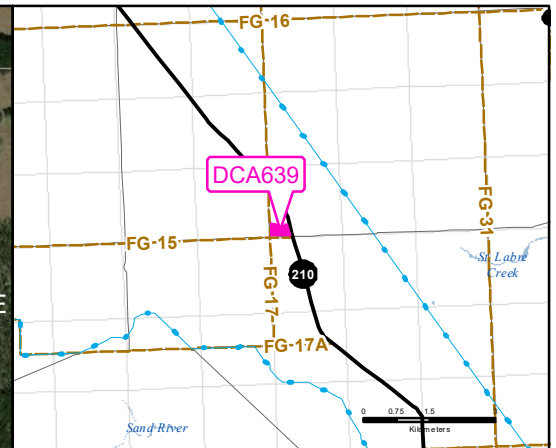
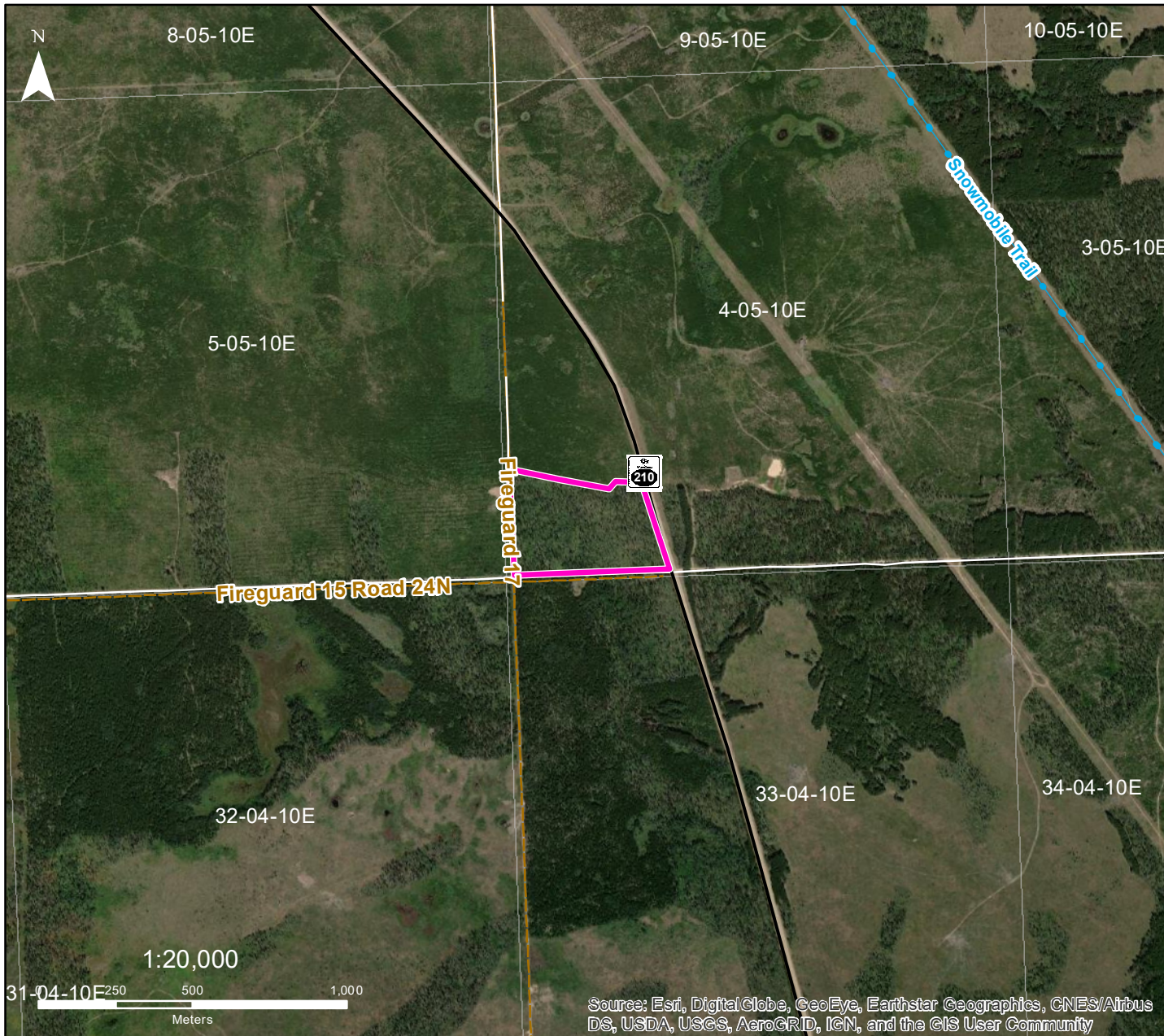
Any species (excluding Elm), green or dry, can be removed from the harvest areas. White Birch has a maximum harvest limit of 5m³

INFO: Fire Killed. No debris on Snowmobile trail or Right of Way

NAD1983 UTM ZONE 14N

Forestry Branch
Agriculture and Resource Development

Dominant Species	Product	Species Condition	Season	Access Condition	Suggestion
Jack Pine 100%	Fuel Wood	Dead Standing	All	Good	Truck



DESIGNATED CUTTING AREA 639

Sprague

- FMU 24 -

Sec 4 - Twp 5 - Rge 10E

 Cutting Area

Location:

From Woodridge, travel north on Hwy 210 for 9km. Access from Fireguard 15.

General Instructions:

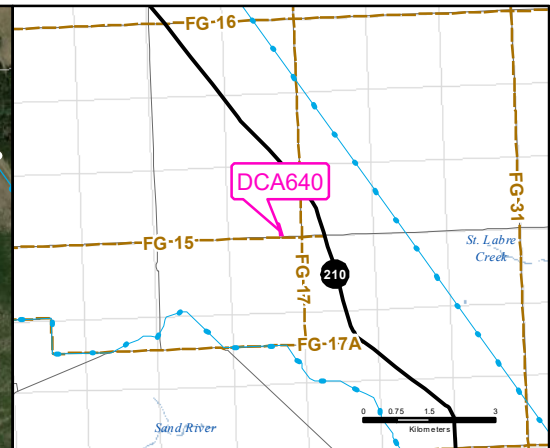
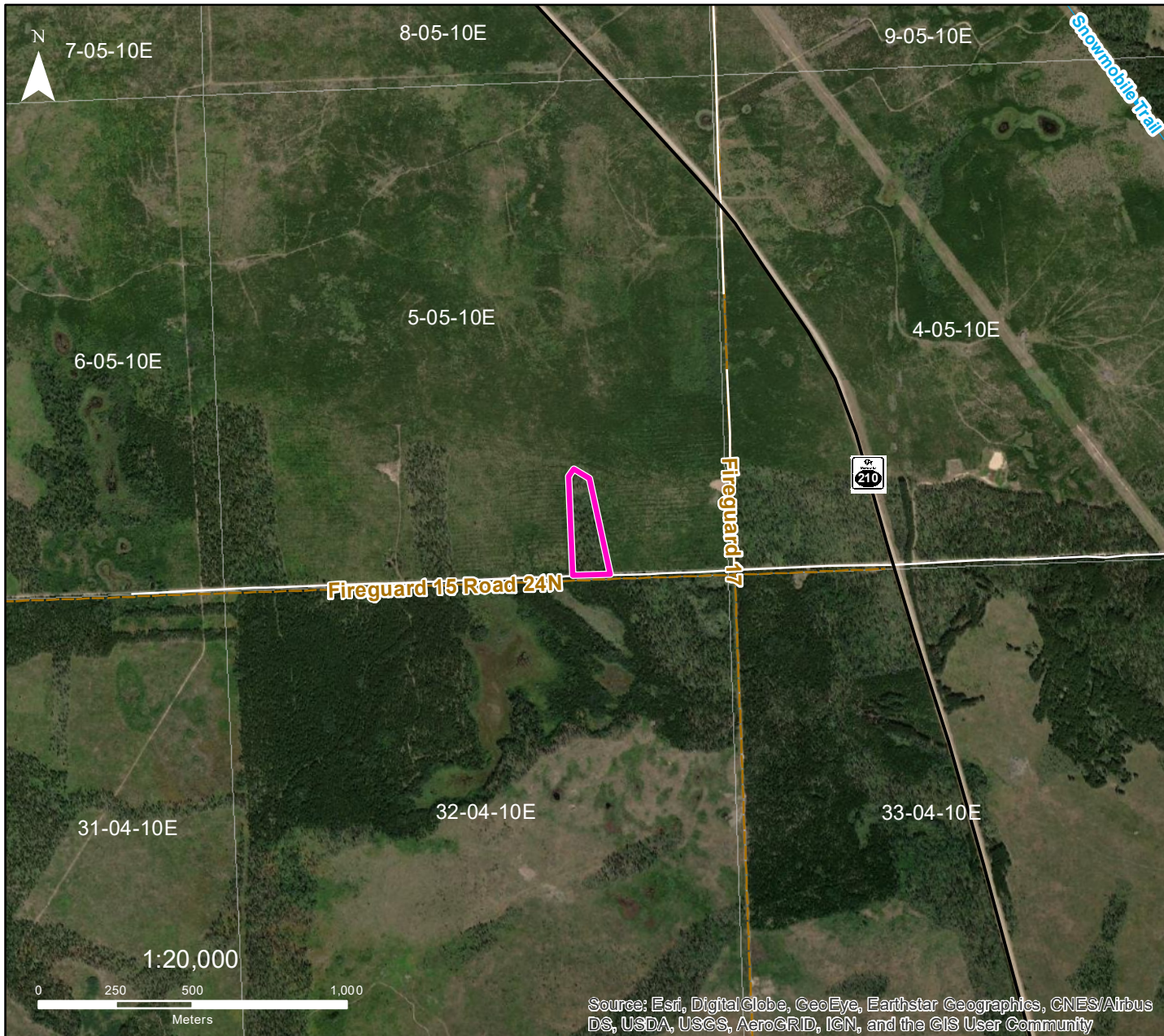
Any species (excluding Elm), green or dry, can be removed from the harvest areas. White Birch has a maximum harvest limit of 5m³

INFO: Harvesting area is on north side of Fireguard 15 only

NAD1983 UTM ZONE 14N

Forestry Branch
Agriculture and Resource Development

Dominant Species	Product	Species Condition	Season	Access Condition	Suggestion
Jack Pine 100%	Fuel Wood	Green/Dead/FireKilled	All	Good	Truck/Snowmobile



DESIGNATED CUTTING AREA 640

Sprague

- FMU 24 -

Sec 5 - Twp 5 - Rge 10E

 Cutting Area

Location:

From Woodridge, travel north on Hwy 210 for 9km to Fireguard 15. Travel west on Fireguard 15 for 1km.

General Instructions:

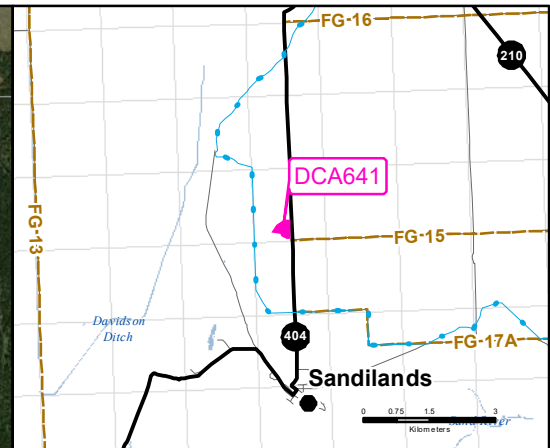
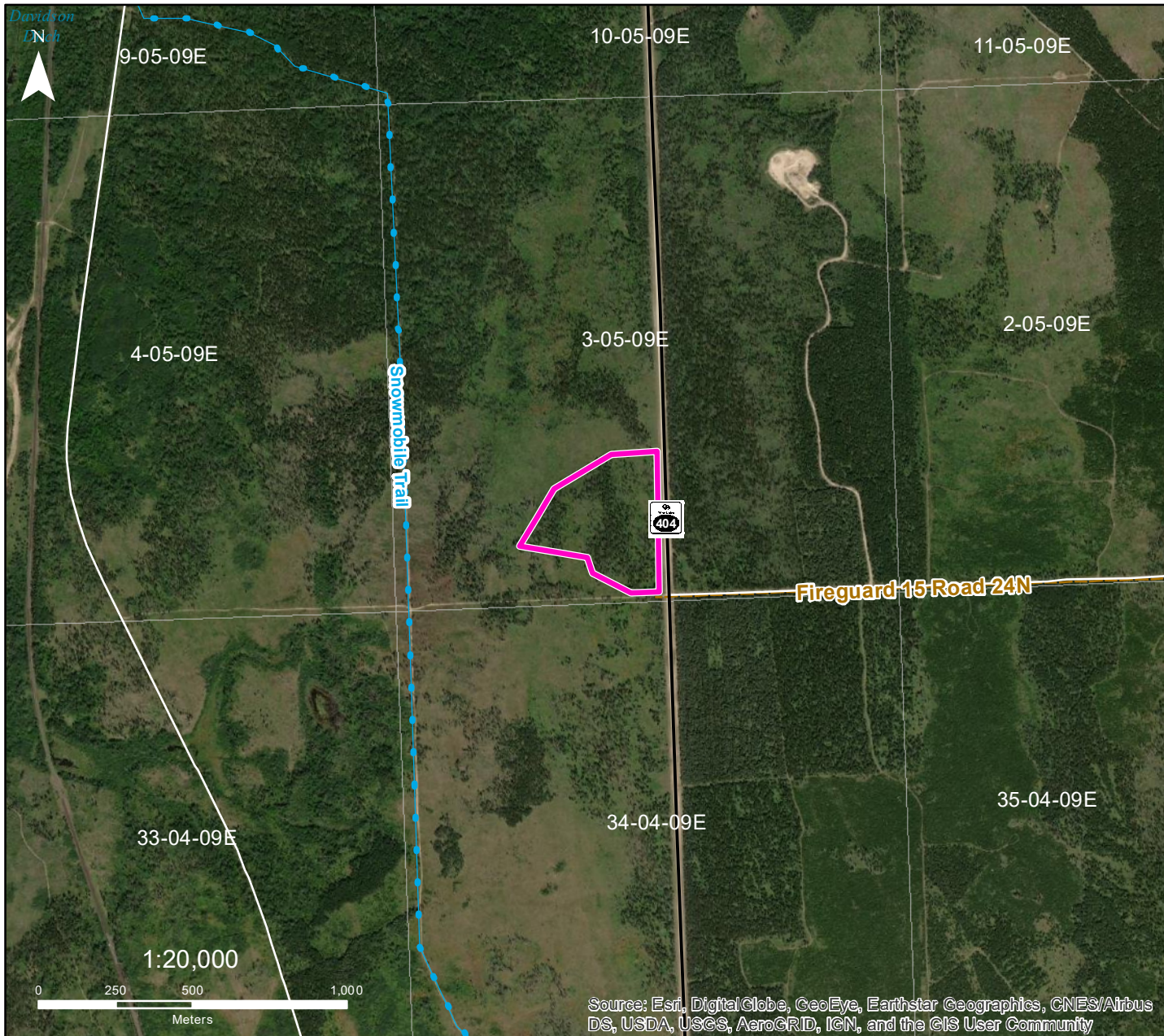
Any species (excluding Elm), green or dry, can be removed from the harvest areas. White Birch has a maximum harvest limit of 5m³

INFO:

NAD1983 UTM ZONE 14N

Forestry Branch
Agriculture and Resource Development

Dominant Species	Product	Species Condition	Season	Access Condition	Suggestion
Jack Pine 100%	Fuel Wood	Green/Dead/FireKilled	All	Good	Truck/Snowmobile



DESIGNATED CUTTING AREA 641

Sprague

- FMU 24 -

Sec 3 - Twp 5 - Rge 9 E

 Cutting Area

Location:

From Sandilands, travel 1.7km north on PTH 404. DCA is on west side of highway.

General Instructions:

Any species (excluding Elm), green or dry, can be removed from the harvest areas. White Birch has a maximum harvest limit of 5m3

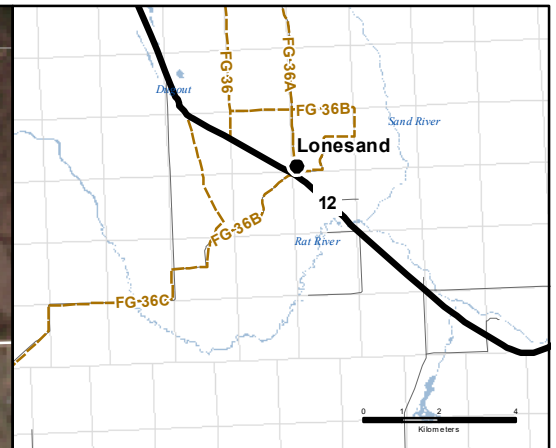
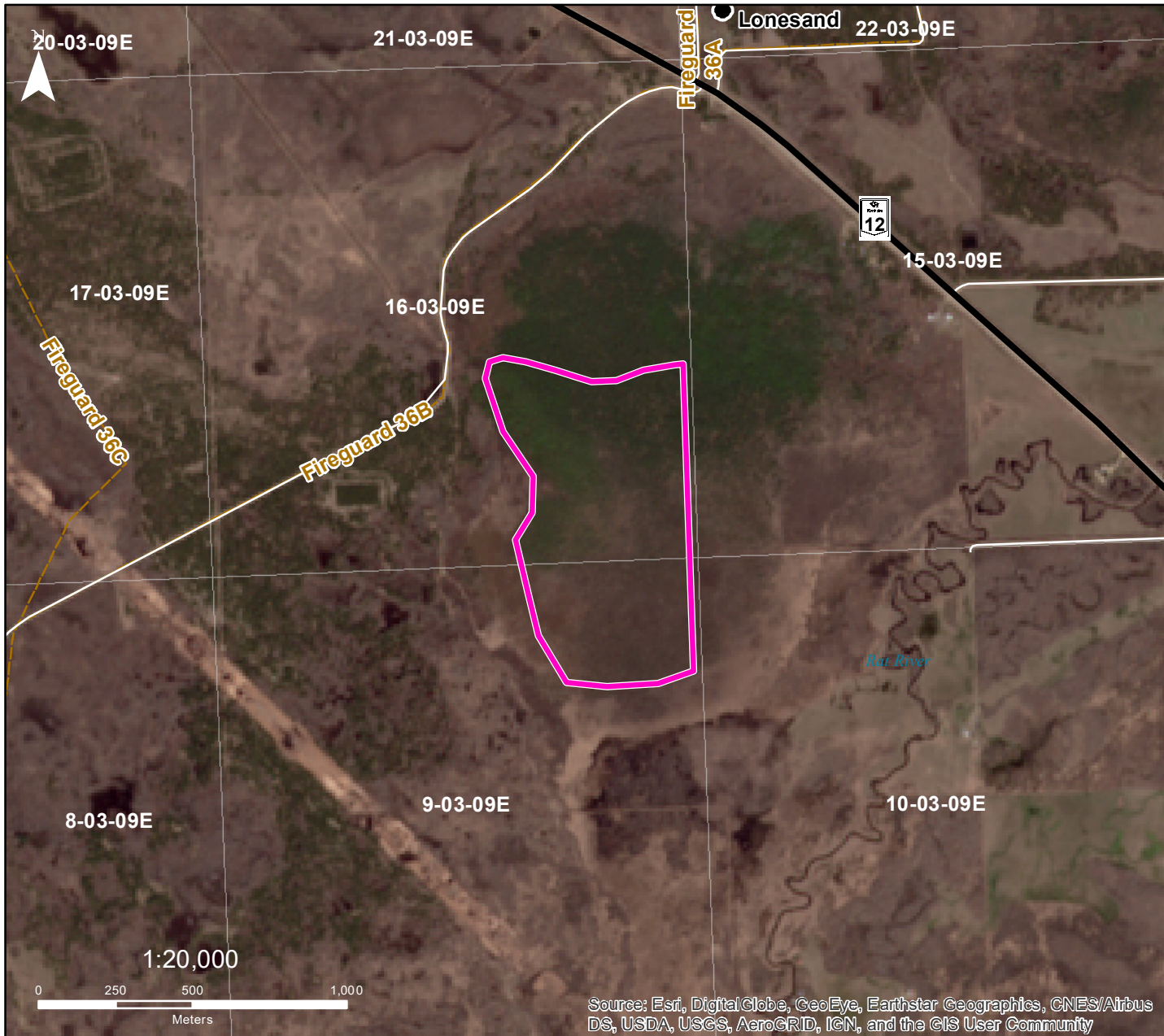
INFO:

NAD1983 UTM ZONE 14N

Forestry Branch
Agriculture and Resource Development

Source: Esri, DigitalGlobe, GeoEye, Earthstar Geographics, CNES/Airbus DS, USDA, USGS, AeroGRID, IGN, and the GIS User Community

Dominant Species	Product	Species Condition	Season	Access Condition	Suggestion
Jack Pine 100%	Fuel Wood	Green / Dead Standing	All	Good	Truck



DESIGNATED CUTTING AREA 701

Steinbach

- FMU 24 -

Sec 16 - Twp 3 - Rge 9 E

 Cutting Area

Location:

From jct of Hwy 12 & Hwy 404, travel south on Hwy 12 for 7 km to Fireguard 36A. Travel south on Fireguard 36A for 1.4 km to trail. Travel south on trail for 1.4 km.

General Instructions:

Any species (excluding Elm), green or dry, can be removed from the harvest areas. White Birch has a maximum harvest limit of 5m3

INFO: Winter Access not maintained.

Dominant Species	Product	Species Condition	Season	Access Condition	Suggestion
Black Spruce 40%	Fuel Wood	Green	All	Fair	Truck/Snowmobile
Tamarack 40%	Fuel Wood	Green/Dead Standing	All	Fair	Truck/Snowmobile
Eastern Cedar 20%	Fuel Wood	Green	All	Fair	Truck/Snowmobile

NAD1983 UTM ZONE 14N
Forestry Branch
Agriculture and Resource Development