

Children's disABILITY Services



Family
Supports
for Children
with
Disabilities



THE PROGRAM

What is Children's disABILITY Services?

This program, provided through Manitoba Families, supports families who are raising a child (or children) with developmental or physical disabilities, to meet the additional needs they may have.

How Does Children's disABILITY Services Help Families?

Children's disABILITY Services offers a variety of resources and supports to parents to assist them to care for their children at home in their own communities, where children grow and thrive.

Does my child qualify?

Children under the age of 18, who live in Manitoba with their birth, adoptive or extended families, are eligible. Eligible children must also have a medical diagnosis confirming one or more of the following conditions:

- intellectual disability
- developmental delay
- autism spectrum disorder
- lifelong physical disability
- high probability of developmental delay due to a pre-existing condition

*For the purposes of this brochure, the word "parent" is used to represent a birth, adoptive or extended family member who takes care of a child under the age of 18 in their home.



How do I apply?

Some families are referred to Children's disABILITY Services by medical professionals, schools, and child care facilities. You may also apply for the program by visiting www.gov.mb.ca/fs/cds or contacting the Children's disABILITY Services office in your community. (See list on back page.)

Please note: Written confirmation of the child's diagnosis must be included with all applications.



What happens next?

If your child qualifies for the program, a Children's disABILITY Services worker will connect with your family to look at your specific situation, and talk to you about your needs, goals and care concerns. The worker will provide you with information about supports that may be available through Children's disABILITY Services and other agencies, such as child care facilities, schools and volunteer organizations.

The worker can also help you arrange for the services you need and, as long as your child remains eligible for Children's disABILITY Services, a worker may remain involved until your child is 18, or you no longer need these services.

THE SERVICES

Children's disABILITY Services offers a range of services and supports. Many can be provided at home, in a child care centre, at school or at another site chosen by the therapist or a Children's disABILITY Services worker.

*Please note: The amount of service a family receives depends on eligibility, assessed need and the program resources available.

Respite

Respite is a break from the very unique demands of caring for a child with disabilities. It is available to parents who need a short-term break, and can be provided in or outside the child's home. For children who have lifelong, complex medical needs, respite can be provided by a registered nurse through the local regional health authority.

Therapy

Children who need therapy services will be referred to their regional central intake for the **Children's Therapy Initiative (CTI)**. Families can also self refer. Therapies that may be available include occupational therapy, physiotherapy, speech and language therapy and audiology. For more information please visit www.sscy.ca/childrens-therapy-initiative



Child Development Services for Preschool Children

Child Development staff work with parents to identify their child's strengths and goals. Staff teach parents and caregivers ways to help the child develop and learn new skills.

Autism Services

Autism Outreach: This service teaches parents and caregivers autism intervention methods that are personalized and flexible. Autism specialists work closely with Child Development staff to deliver the service.

Applied Behaviour Analysis (ABA): Programming based on the principles of ABA is available for children diagnosed with autism spectrum disorder. Programs are personalized and use behavioural strategies to teach skills across a number of areas.

Behavioural Services

Behavioural specialists may assess a child's challenging behaviours, and together with the family, develop a plan that addresses the child's needs.

Summer Skills Programming

Children's disABILITY Services can help school-age children maintain their skills during the summer months. This is done by providing supports children need to access programs and activities that promote what they have learned during the school year.



After-School Care for Adolescents

After-school care may be available for adolescents who can no longer access child care, but still need to be looked after and supervised outside school hours, while their parents are at work, attend school or training.



Supplies, Equipment and Home/Vehicle Modifications

Children's disABILITY Services may provide funding for certain supplies, equipment and home or van modifications at a basic level. These supports are provided through the Disability and Health Supports Unit (DHSU). For more information on what is available, visit www.manitoba.ca/fs/dhsu



Transportation

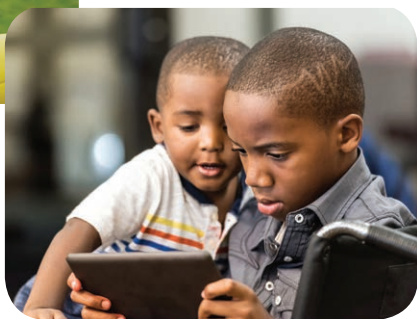
Families may receive financial support to cover the costs of transportation to and from their child's medical appointments and other specialized services. This support is mainly provided to families in rural and northern Manitoba.

What are the limits to these services?

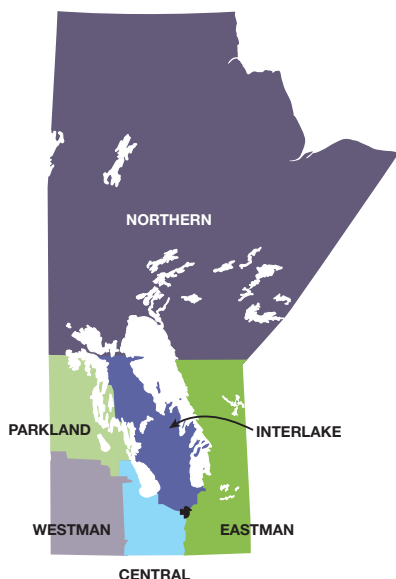
Children's disABILITY Services recognizes that each family's circumstances are different, and assesses the needs of each family individually. The amount of service a family receives depends on eligibility, assessed need and the program resources available.

Who can I contact for more information?

To speak with someone about Children's disABILITY Services, please contact the program office in your community.



CHILDREN'S DISABILITY SERVICES OFFICE LOCATIONS



EASTMAN REGION

Regional Office

Box 50, 20-1st Street South
Beausejour, MB R0E 0C0
Phone: 204-268-6028
Fax : 204-268-6222
Toll-Free: 1-866-576-8546

Area Office

242-323 Main Street
Steinbach, MB R5G 1Z2
Phone: 204-346-6390
Fax: 204-326-9948
Toll-Free: 1-866-682-9782

INTERLAKE REGION

Regional Office

101-446 Main Street
Selkirk, MB R1A 1V7
Phone: 204-785-5106
Fax: 204-785-5321
Toll-Free: 1-866-475-2015

CENTRAL REGION

Regional Office

290 North Railway Street
Morden, MB R6M 1S7
Phone: 204-822-2861
Fax: 204-822-2879
Toll-Free: 1-888-310-0568

Area Office

25 Tupper Street North
Portage la Prairie, MB R1N 3K1
Phone: 204-239-3092
Fax: 204-239-3198
Toll-Free: 1-866-513-2185

NORTHERN REGION

Regional Office

Provincial Building
Box 2550 3rd Street and
Ross Avenue
The Pas, MB R9A 1M4
Phone: 204-627-8311
Fax: 204-627-5792
Toll-Free: 1-866-443-2292

Area Office

Box 5, 59 Elizabeth Drive
Thompson, MB R8N 1X4
Phone: 204-677-6570
Fax: 204-677-6517
Toll-Free: 1-866-677-6713

Area Office

102-143 Main Street
Flin Flon, MB R8A 1K2
Phone: 204-687-1700
Fax: 204-687-1708
Toll-Free: 1-866-443-2291

PARKLAND REGION**Regional Office**

309-27, 2nd Avenue SW
Dauphin, MB R7N 3E5
Phone: 204-622-2035
Fax: 204-638-3278
Toll-Free: 1-866-355-3494

Area Office

PO Box 997
1431 First St. North
Swan River, MB R0L 1Z0
Phone: 204-734-3491
Fax: 204-734-5615
Toll-Free: 1-866-269-6498

WESTMAN REGION

229-340, 9th Street
Brandon, MB R7A 6C2
Phone: 204-726-6336
Fax: 204-720-7711
Toll-Free: 1-866-726-6438

WINNIPEG REGION

2-111 Rorie Street
Winnipeg, MB R3B 3N1
Phone: 204-948-4001
Fax: 204-948-4511

SSCY Centre
1155 Notre Dame Avenue
Winnipeg, MB R3E 3G1
Phone: 204-945-0290 or
204-945-0327
Fax: 204-948-4788

**DISABILITY AND
HEALTH SUPPORTS
UNIT (DHSU)**

100-114 Garry Street
Winnipeg, MB R3C 4V4
Phone: 204-945-4393
Toll-Free: 1-877-587-6224
Fax: 204-945-1436
Email:
disandhealthsupports@gov.mb.ca
Website:
www.manitoba.ca/fs/dhsu

**FAMILY SUPPORT
SERVICES**

SSCY Centre
1155 Notre Dame Avenue
Winnipeg, MB R3E 3G1
Phone: 204-945-0327 or
204-945-8311
Fax: 204-948-4788

Children's disABILITY Services

believes that parents
and family members
are the most important
people in a child's life,
and that parents know
best the needs of their
family and their child.

For more information, please contact

Children's disABILITY Services

Phone: 204-945-5898

[cgs@gov.mb.ca](mailto:cds@gov.mb.ca)

gov.mb.ca/fs/cds

Available in alternate formats upon request.