

Influenza Surveillance Report 2019–2020

Week 49 (Dec. 1–7, 2019)

Data extracted Dec.13, 2019 at 11:00 am

Next report date: Dec. 20, 2019

Provincial Update: Influenza activity in Manitoba is overall increasing. Influenza A detections in Week 49 increased from the previous weeks. Influenza B detections slightly decreased from the previous week; however, influenza B continued to be the most detected virus in all laboratory detections in respiratory viruses from Week 48. While influenza A cases in Week 49 concentrated in Winnipeg, influenza B cases continued to be reported in Northern communities as well as in communities from other areas. A small number of respiratory outbreaks including laboratory-confirmed influenza outbreaks continued to be reported. Activity level in some syndromic indicators increased from the previous weeks and was within expected levels at this time of a year.

National Update: The flu season started in week 47 at the national level, and activity continued to increase in Week 48 as expected for this time of year. Approximately 40% of influenza A detections were A(H1N1) in week 48. Although the majority of laboratory detections have been influenza A to date this season, the proportion of influenza B detections (30%) is higher than average at this time of year.

International Update: As of Week 48, seasonal influenza activity in the United States has been elevated for four weeks and continued to increase. Overall, influenza B/Victoria viruses are the most common followed by influenza A(H1N1)pdm09 and influenza A(H3N2). However, the predominant virus varies by region and age group.



Laboratory	This Week
Laboratory-confirmed influenza cases:	
<ul style="list-style-type: none"> Influenza A: 15 Influenza B: 24 	
From Sept.	
<ul style="list-style-type: none"> Influenza A: 55 Influenza B: 95 	

Severity	This Week
Severe outcomes associated with influenza:	
<ul style="list-style-type: none"> Hospitalizations: <5 ICU* admissions: <5 Deaths: <5 	
From Sept.	
<ul style="list-style-type: none"> Hospitalizations: 14 ICU* admissions: <5 Deaths: <5 	

Outbreaks	This Week
Laboratory-confirmed influenza outbreaks:	
<ul style="list-style-type: none"> Influenza A: <5 Influenza B: 0 Influenza A & B: <5 	
From Sept.	
<ul style="list-style-type: none"> Influenza A: <5 Influenza B: <5 Influenza A & B: <5 	

Vaccine	As of Dec.13
<ul style="list-style-type: none"> Percentage of Manitoba residents immunized with the seasonal influenza vaccine: 19.9% 	

Calls	This Week
Calls to Influenza Service at Health Links–Info Santé: 24	

Physician Visits	This Week
Visits to sentinel physicians due to ILI: 0.6 %	

Antiviral	This Week
Units of antiviral dispensed from pharmacies: 38	

ER Visits	This Week
Respiratory visits to Emergency Department (ED): 162/day	

Note. * ICU admissions were also included in hospitalizations. Numbers are subject to change. Missed events in the current report due to a delay of submission to MHSAL will be included in later reports when data become available.

Influenza Surveillance Report 2019–2020

Figure 1. Weekly Cases of Laboratory-Confirmed Influenza, Manitoba

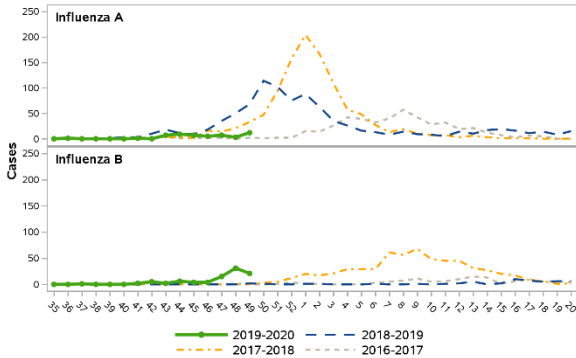


Figure 2. Average Daily Respiratory Visits to Emergency Department and % of Total Visits, Winnipeg Regional Health Authority, Manitoba

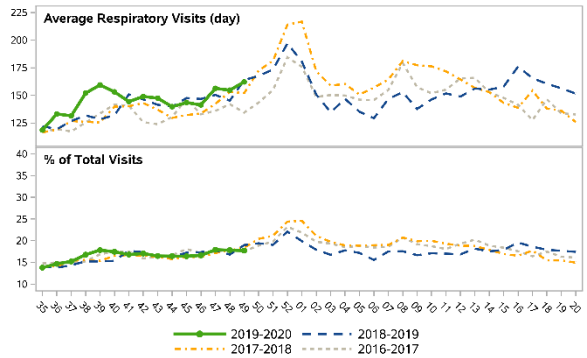


Figure 3. Weekly Influenza and ILI Outbreaks, Manitoba

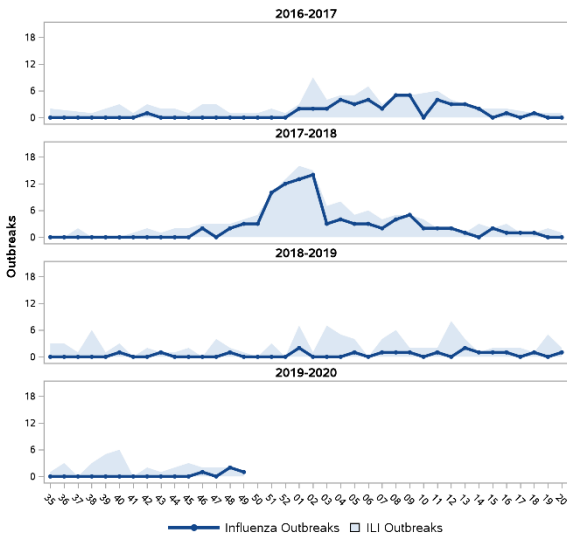


Table 1. Antiviral Resistance of Isolates by Influenza Type and Subtype since September 1, 2019

		Oseltamivir		Zanamivir	
		R*	S**	R*	S**
Canada	A(H3N2)	0	63	0	63
	A(H1N1)	0	28	0	28
	B	0	32	0	32
Manitoba	A(H3N2)	0	2	0	2
	A(H1N1)	0	3	0	3
	B	0	7	0	7

* Resistant **Sensitive

Table 2. Influenza Strain Characterization reported by National Microbiology Laboratory since September 1, 2019

Strain	Number of viruses	
	Canada	Manitoba
A/Kansas/14/2017-like	18	1
A/Brisbane/02/2018-like	35	3
B/Colorado/06/2017-like	33	7

As per the World Health Organization (WHO), all seasonal quadrivalent influenza vaccines for 2019–2020 in the northern hemisphere contain those strains.