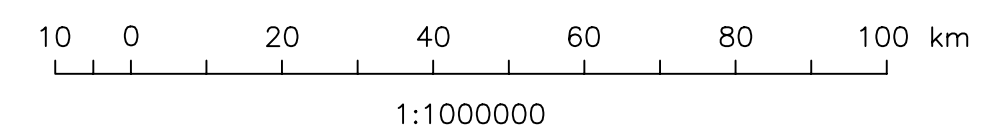


STRATIGRAPHIC MAP SERIES DEP - 1  
**STRUCTURE CONTOUR & ISOPACH MAP**  
**DEVONIAN - ELK POINT GROUP**  
 (PRAIRIE EVAPORITE + WINNIPEGOSIS, but excluding ASHERN)

- STRUCTURE CONTOUR (250' Contour Interval)
- - - ISOPACH CONTOUR (50' Contour Interval)
- ±250  
10 ELEVATION ABOVE (BELOW) SEA LEVEL DATUM  
THICKNESS OF ELK POINT
- ▨ PRESENT EXTENT OF SALT (HALITE) IN PRAIRIE EVAPORITE
- ▩ AREA OF KNOWN POTASH OCCURENCE IN PRAIRIE EVAPORITE
- ⌋⌋ LIMIT OF ANHYDRITE (i.e. limit of Prairie Evaporite)
- ▤ ELK POINT GROUP (outcrop area)
- ▥ ELK POINT GROUP (subcrop area - unconformably overlain by Jurassic Amaranth Formation)
- ⊙ WINNIPEGOSIS REEF OCCURENCES - defined, subsurface, outcrop

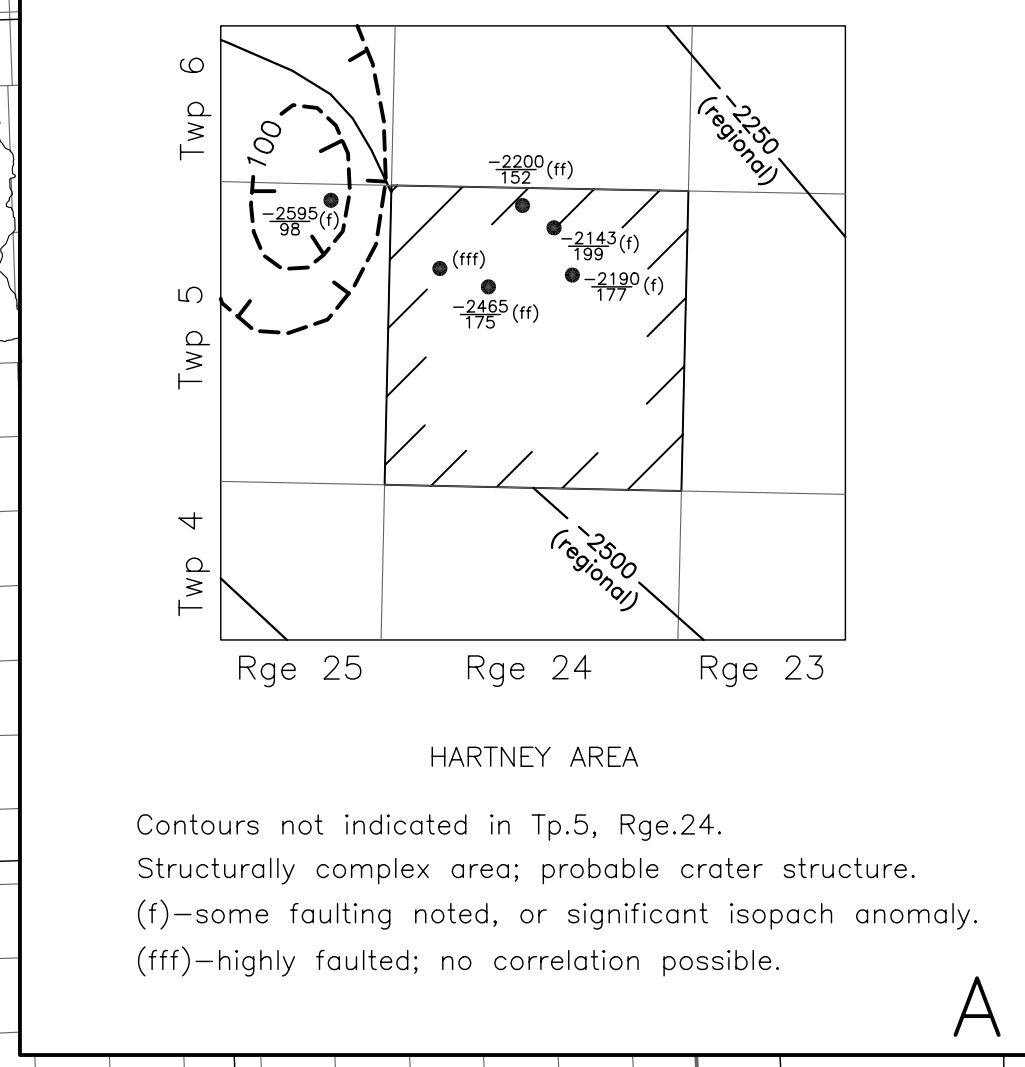
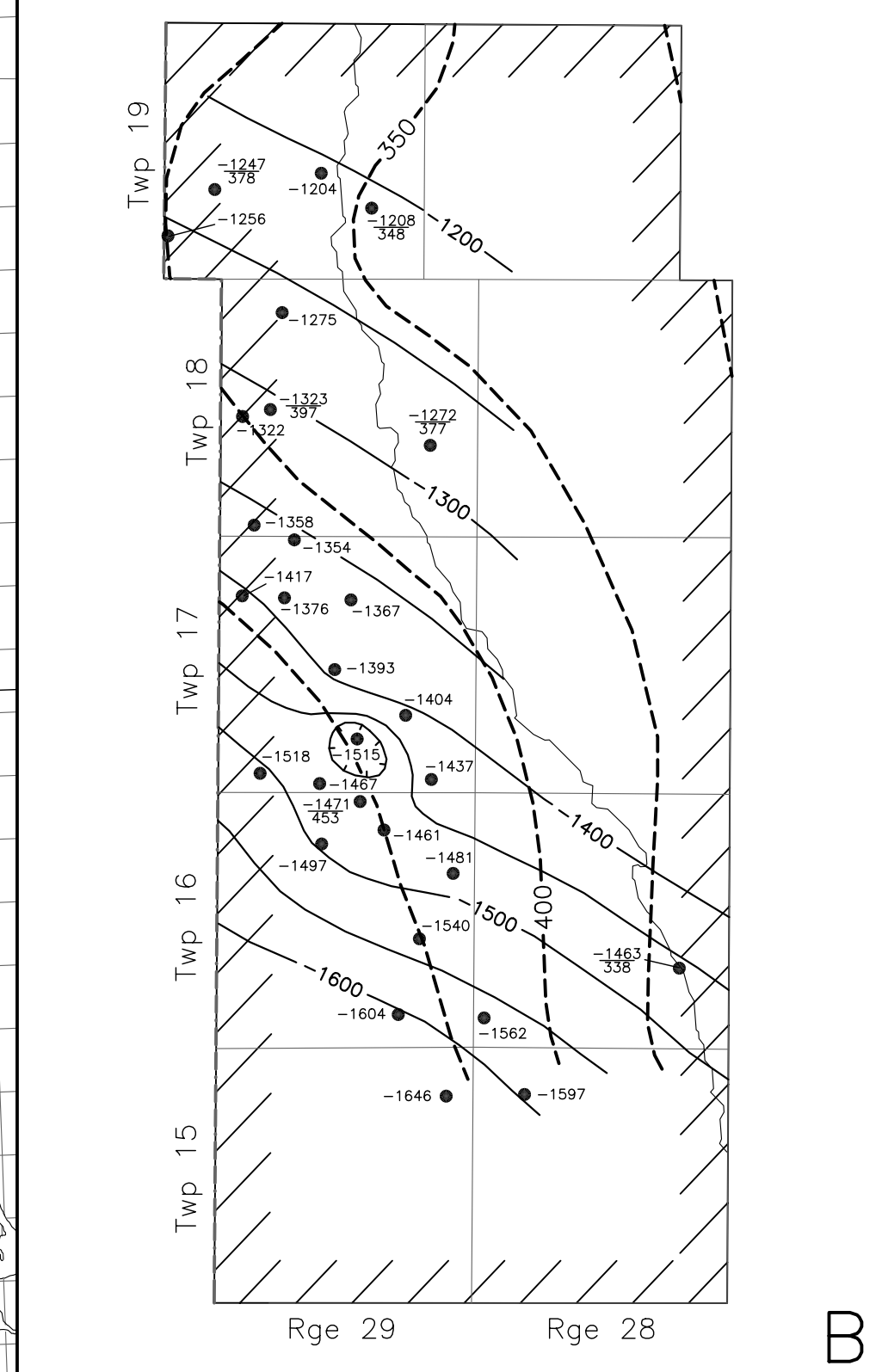
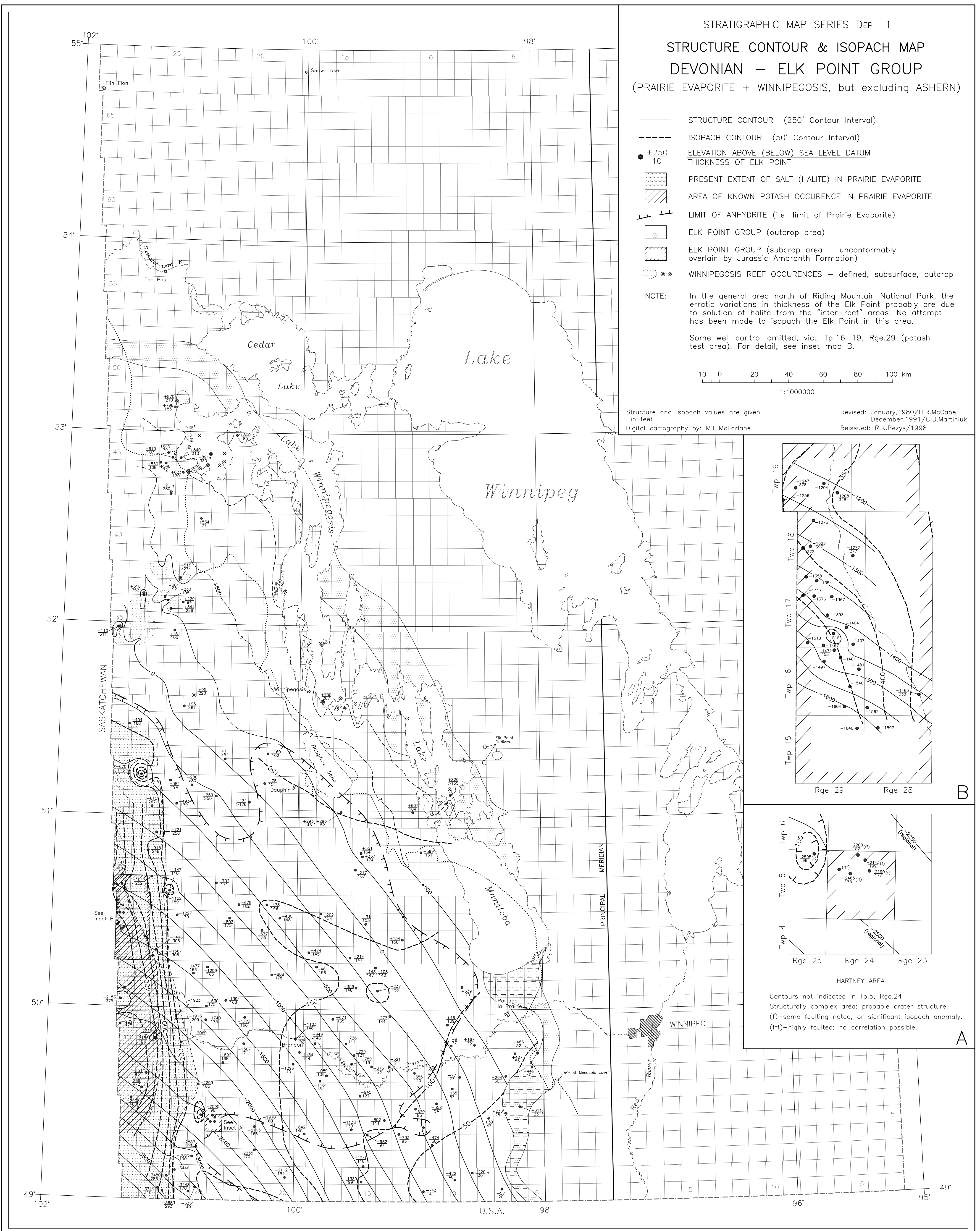
NOTE: In the general area north of Riding Mountain National Park, the erratic variations in thickness of the Elk Point probably are due to solution of halite from the "inter-reef" areas. No attempt has been made to isopach the Elk Point in this area.

Some well control omitted, vic., Tp.16-19, Rge.29 (potash test area). For detail, see inset map B.



Structure and Isopach values are given in feet  
 Digital cartography by: M.E.McFarlane

Revised: January, 1980/H.R.McCabe  
 December, 1991/C.D.Martiniuk  
 Reissued: R.K.Bezys/1998



HARTNEY AREA  
 Contours not indicated in Tp.5, Rge.24.  
 Structurally complex area; probable crater structure.  
 (f)—some faulting noted, or significant isopach anomaly.  
 (fff)—highly faulted; no correlation possible.