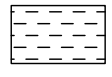

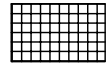
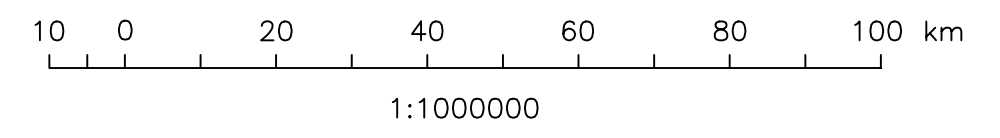


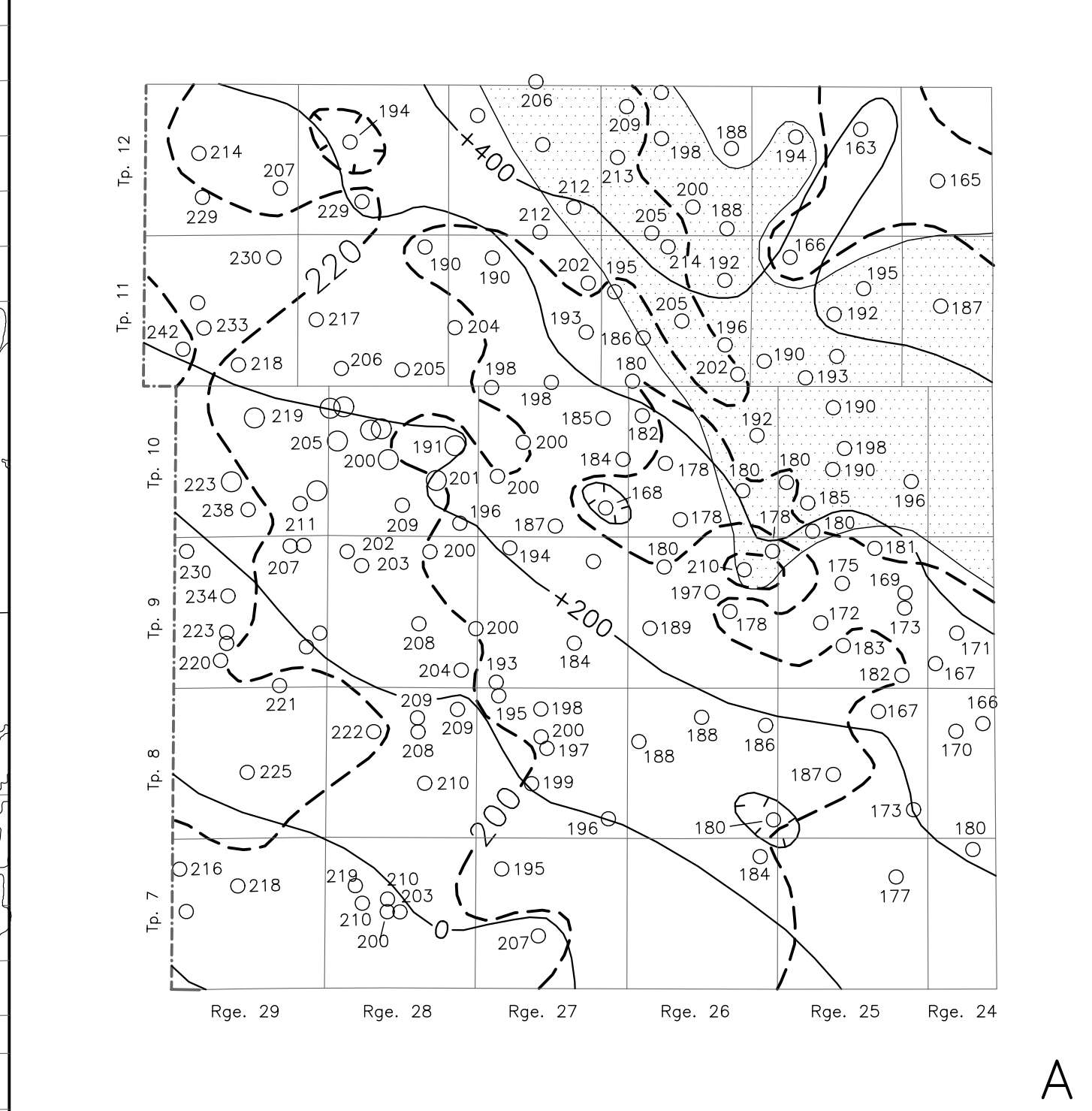
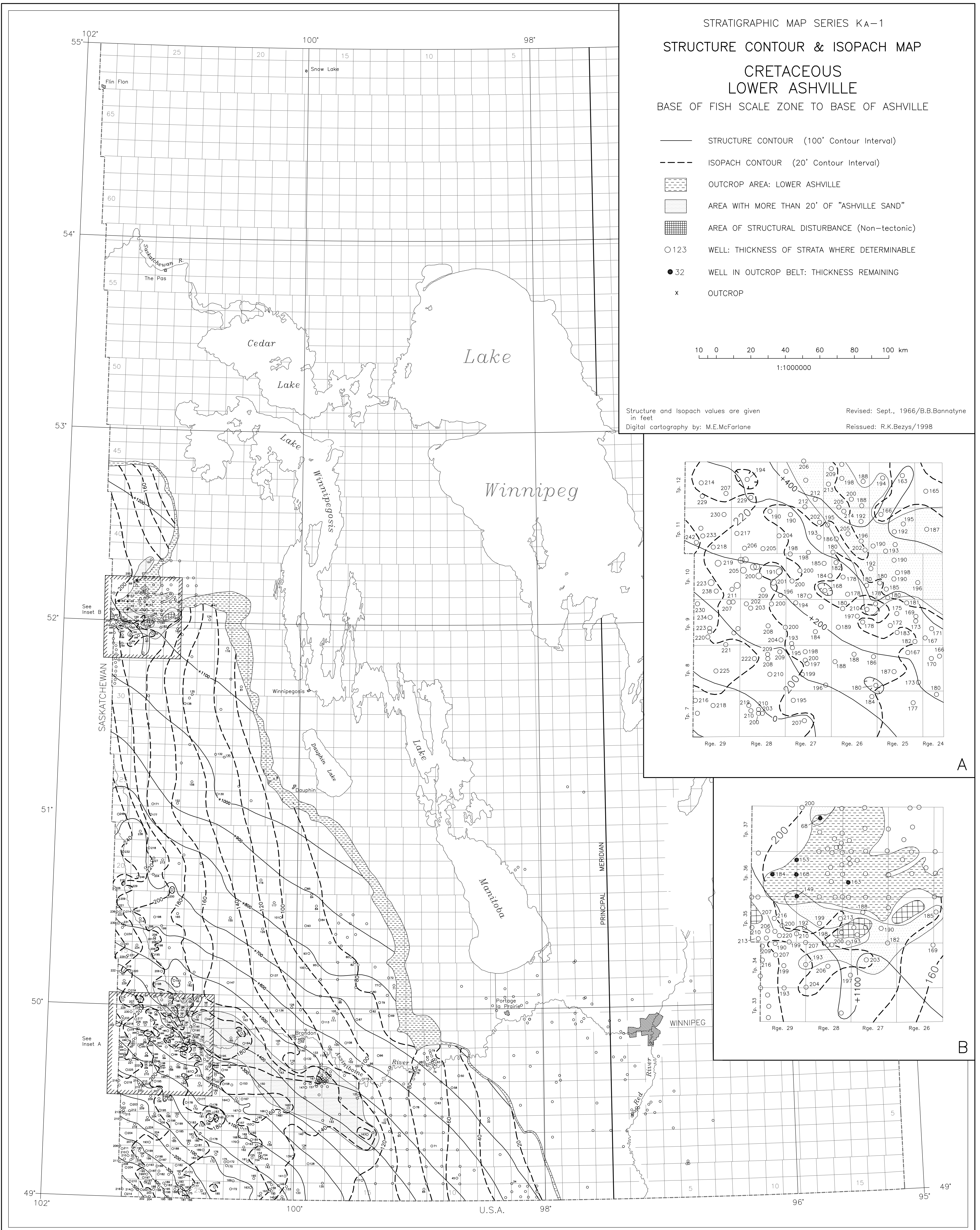
STRATIGRAPHIC MAP SERIES KA-1
STRUCTURE CONTOUR & ISOPACH MAP
CRETACEOUS
LOWER ASHVILLE
 BASE OF FISH SCALE ZONE TO BASE OF ASHVILLE

- STRUCTURE CONTOUR (100' Contour Interval)
- - - ISOPACH CONTOUR (20' Contour Interval)
-  OUTCROP AREA: LOWER ASHVILLE
-  AREA WITH MORE THAN 20' OF "ASHVILLE SAND"
-  AREA OF STRUCTURAL DISTURBANCE (Non-tectonic)
- 123 WELL: THICKNESS OF STRATA WHERE DETERMINABLE
- 32 WELL IN OUTCROP BELT: THICKNESS REMAINING
- x OUTCROP

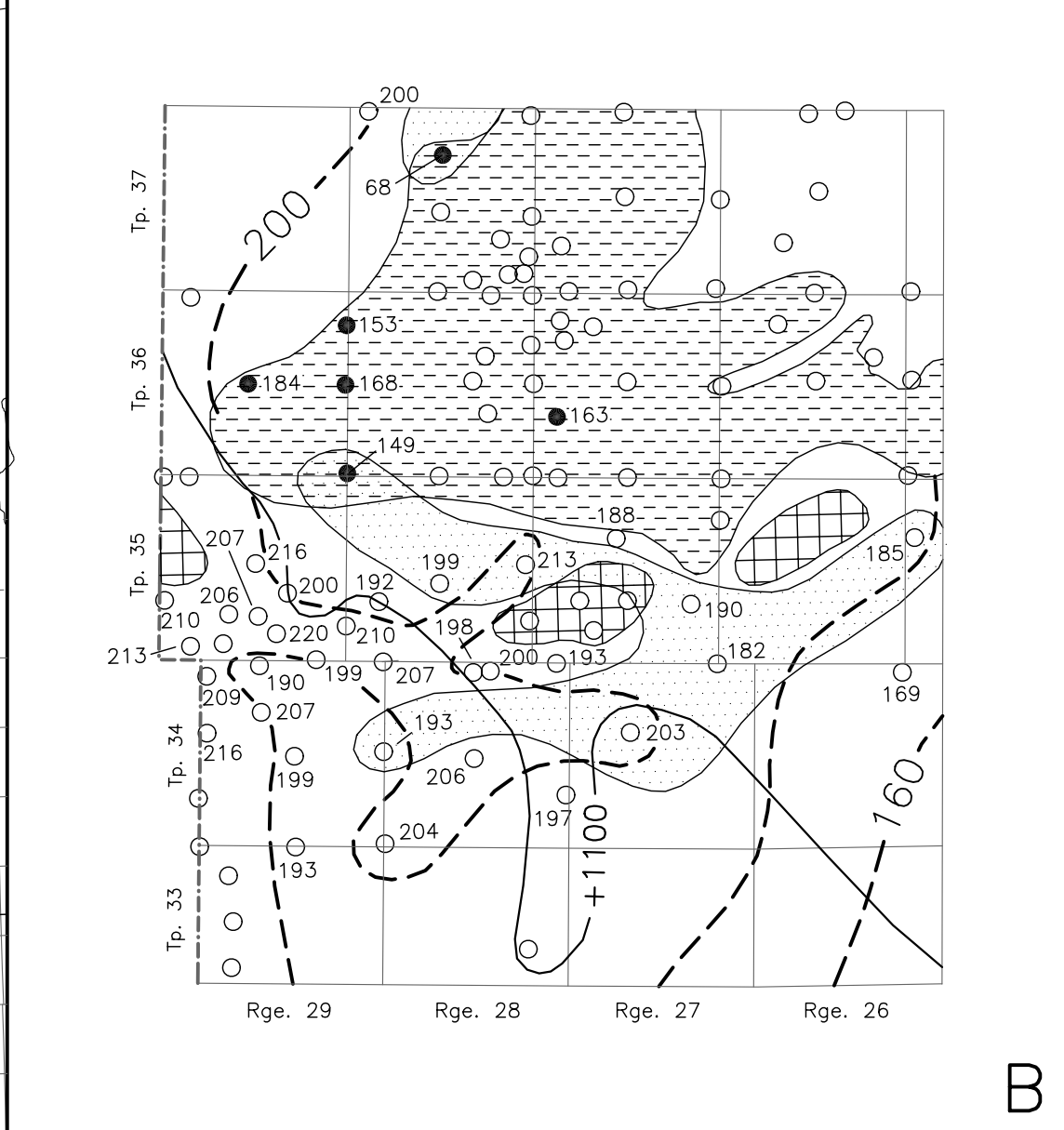


Structure and Isopach values are given in feet
Digital cartography by: M.E.McFarlane

Revised: Sept., 1966/B.B.Bannatyne
Reissued: R.K.Bezys/1998



A



B