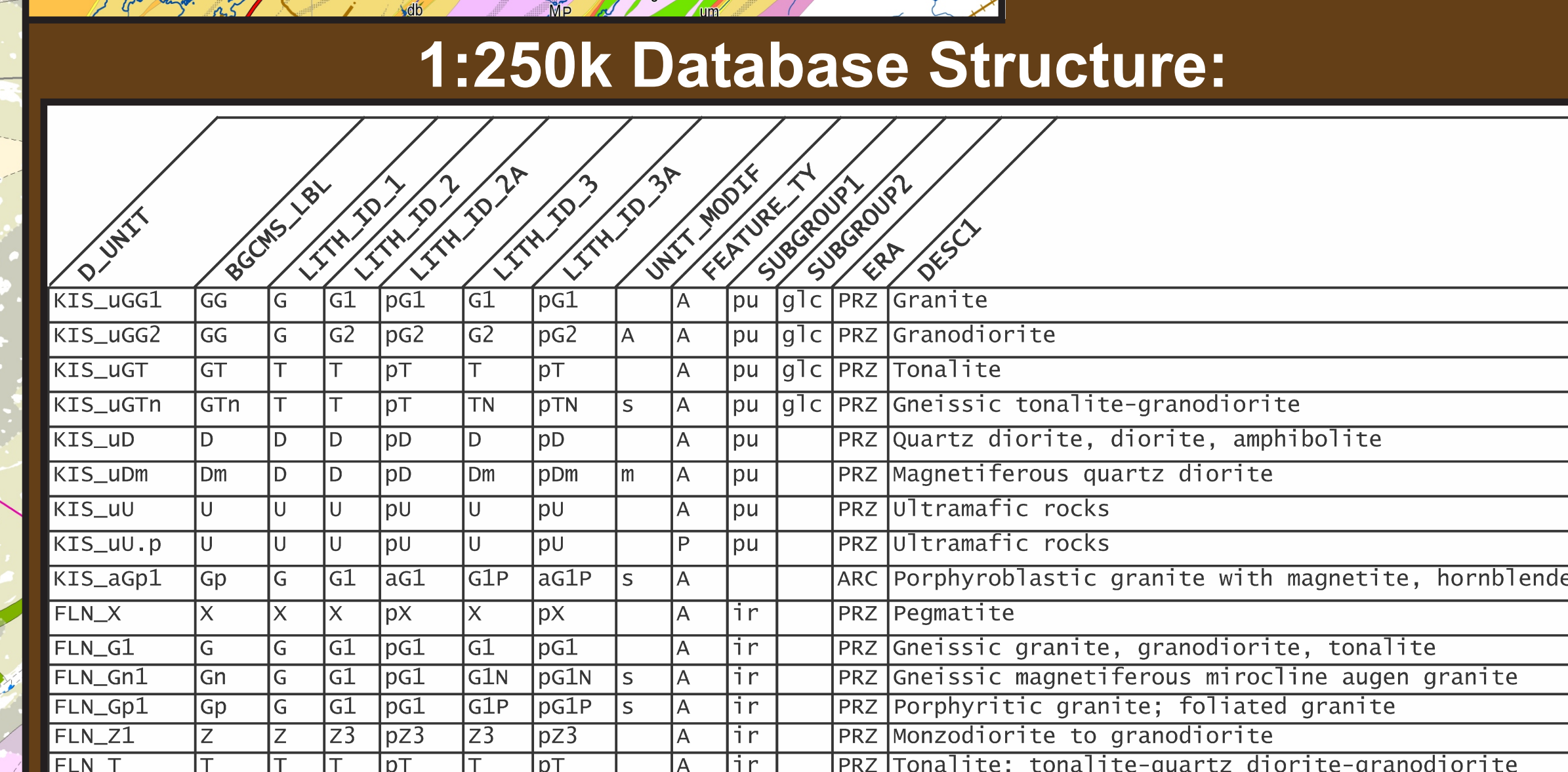
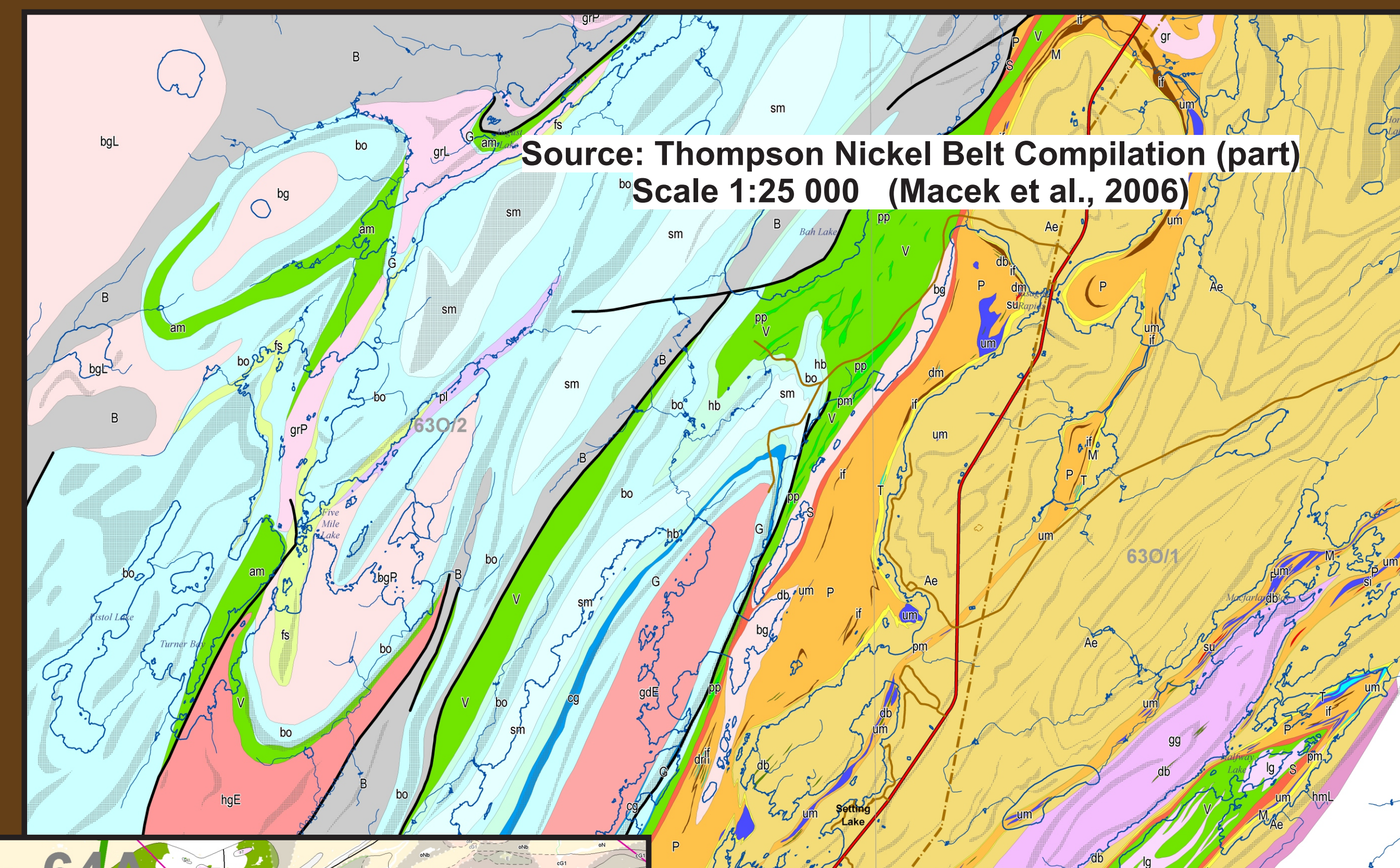


L.E. Chackowsky, Manitoba Geological Survey



ERA: Geological era

Produce a seamless 1:250 000 digital compilation of the Precambrian geology of Manitoba.
Create a flexible database schema that can be applied to a variety of digital products.

Digitize Bedrock Geology Compilation Map Series. Begun in 1980, this series of hand-drafted maps was the Survey's first systematic geological compilation at 1:250,000 scale. An Excel-style legend was devised in order to capture rock-type information portrayed on the BGCMS maps as letter codes whose rock descriptions also depend on type face, colour and pattern of underlying area, geological domain and NTS sheet. NTS boundary discrepancies needed to be resolved (edge-tying).

- Incorporate other major compilation series into 250K project:
- NATMAP Shield Margin
- Thompson Nickel Belt
- Sub-Phanerozoic Precambrian Interpretation

Create an editing strategy to be used by MGS geological staff to update the compilation. A set of GIS applications generates map sheets displaying a chosen area (usually a 250K NTS sheet) with a custom legend, domain boundaries, and highlighted problem areas such as adjacent polygons with identical rock descriptions.

Base maps for field mapping, land use planning, First Nations consultation
Geological Highway map (in progress)
Base layer on GIS Map gallery (near future)
1:1M Geology of Manitoba (near future)

Macek, J.J., Zwanig, H.V., Pacey, M. 2006: Thompson Nickel Belt geological compilation map, Manitoba (parts of NTS 63G, J, O, P and 64A and B), Manitoba Science, Technology, Energy and Mines, Manitoba Geological Survey, Open File Report 2006-33, 1 CD-ROM

Manitoba Energy and Mines 1989: Nelson House, NTS 63-O, Manitoba Energy and Mines, Geological Services, Bedrock Geology Compilation Map Series, Preliminary Edition, Map 63O, 1 map. scale 1:250 000.

Manitoba Mineral Resources 2013: Bedrock geology, Manitoba; in Map Gallery - Geoscientific Maps, Manitoba Mineral Resources, URL <<http://web33.gov.mb.ca/mapgallery/mgg-gmm.html>> [January 31, 2013].

McGregor, C.R. 2013: Digital compilation of sub-Phanerozoic Precambrian geology in Manitoba, Manitoba Innovation, Energy and Mines, Manitoba Geological Survey, Open File 2012-2, 1 DVD-ROM

Viljoen, D., Chackowsky, L.E., Lenton, P.G., Vanderkam, R., Broome, H.J., Slimmon, W.L., NATMAP Shield Margin Project Working Group, Canada 2000: Selected data from the NATMAP Shield Margin Project database, Geological Survey of Canada; Open file 3884; Manitoba Industry, Trade and Mines, Geological Survey; Open file report 98-1; Saskatchewan Geological Survey; Open file report 2000-3, 1 CD-ROM.

