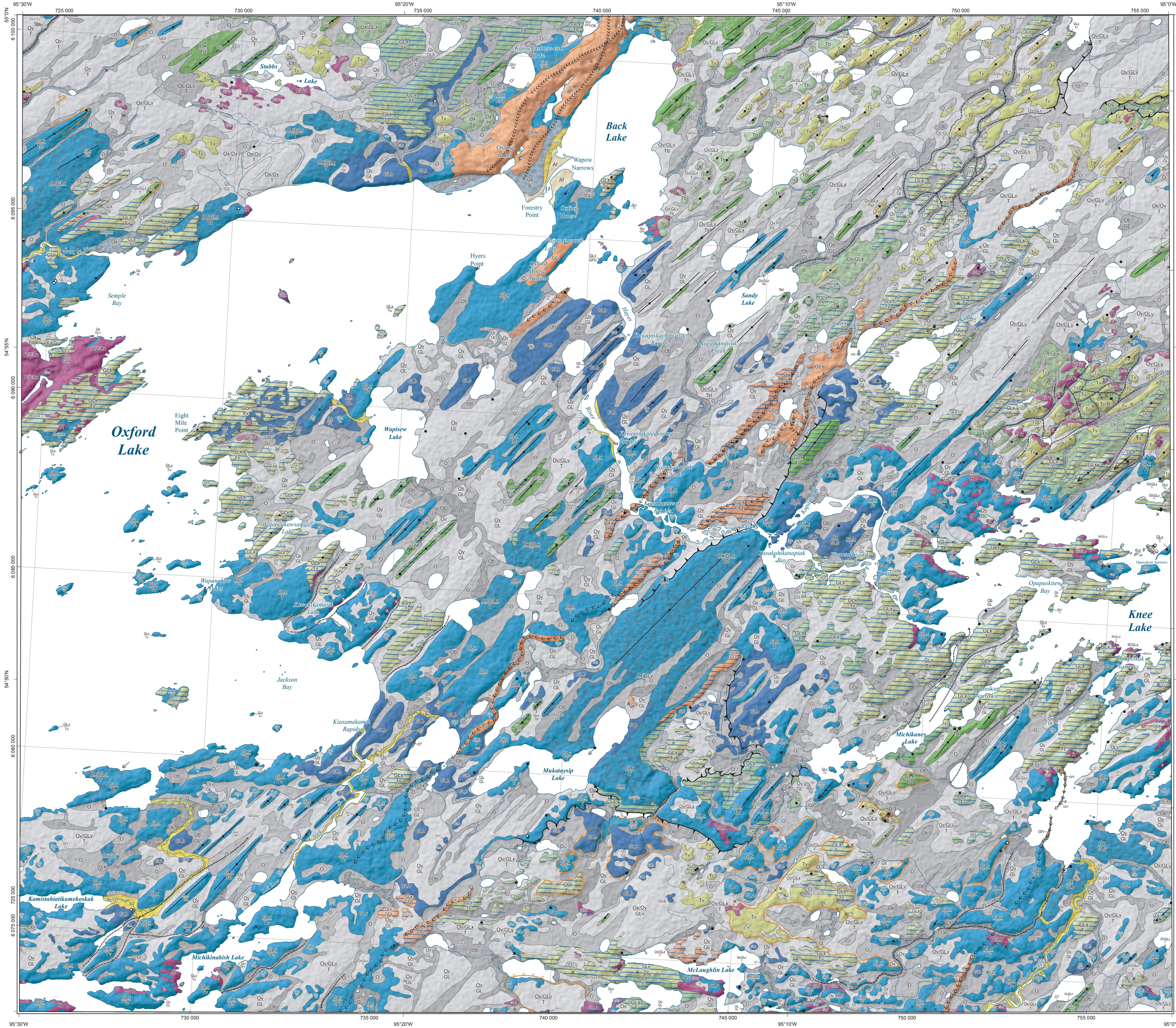




Surficial geology of the Oxford House map area, Manitoba (NTS 53L14)

Geoscientific Map MAP2013-8



QUATERNARY

SURFICIAL DEPOSITS

HOLOCENE

NONGLACIAL ENVIRONMENTS

ORGANIC DEPOSITS: peat and muck; formed by the accumulation of plant material in various stages of decomposition; generally occurs as flat, wet terrain (swamps and bogs) over poorly drained substrates; fibric fens are present mainly along water channels though also occur throughout very poorly drained areas; permafrost is commonly present underlying within organics >30 cm thick; peat mantles most geological features

Organic thin veneer: very thin accumulations of peat, 15–30 cm thick; unless otherwise noted, bedrock is assumed to be the underlying material

Organic veneer: thin accumulations of peat, >30–100 cm thick

Organic blanket: thicker accumulations of peat that locally obscure underlying units, 1–3 m thick; some polygons include hummocky mounds and plateaus underlain by discontinuous permafrost

Organic wetland – bog: thick accumulations of peat that mask the underlying topography; >3 m thick; some polygons include hummocky mounds and plateaus underlain by discontinuous permafrost; O' includes thermokarst terrain related to melting ground ice

Organic wetland – fen: thick accumulations of fibric, often floating, vegetation that mask the underlying topography; >3 m thick

ALLUVIAL DEPOSITS: sorted sand, silt and clay with minor gravel and organic detritus; commonly stratified; deposited along and/or within all modern rivers and streams

Floodplain deposits: sorted sand, silt, clay, minor gravel and organic detritus >1 m thick; forming active floodplains close to river and stream level

Alluvial fan deposits: sorted sand, silt, clay, minor gravel and organic detritus; forming active fan where small streams enter larger lakes

LACUSTRINE DEPOSITS: massive to stratified sand, and minor gravel, deposited along the modern lakeshore, 0.2 to >1 m thick

LATE WISCONSINAN

PROGLACIAL AND GLACIAL ENVIRONMENTS

GLACIOLACUSTRINE DEPOSITS: noncalcareous, massive, very well sorted, moderately dense, 'milk-chocolate' brown clay, and rarer sand (sGL), offshore deposits deposited in glacial Lake Agassiz; these deposits are of variable thickness (0.1–3 m), and drape both till deposits and bedrock; around some of the larger lakes, the glaciolacustrine sediments have been removed from the shoreline by Holocene wave-washing, and thickness increases inland; at a few sites, glaciolacustrine clay was observed underlying a veneer of till; the sediment thickness, as mapped according to the detailed field site data, serves as a guide but the user should note that the occurrence of glaciolacustrine sediments is highly variable and unpredictable

Glaciolacustrine thin veneer: 15–30 cm thick, thin, discontinuous cover, underlying topography is discernible; where thin glaciolacustrine veneers underlie till, the materials are often permafrost-mixed near the contact zone (up to 1 m of mixing); unless otherwise noted, bedrock is assumed to be the underlying material

Glaciolacustrine veneer: >0.31 m thick, moderately well to imperfectly drained, underlying topography is discernible; unless otherwise noted, bedrock is assumed to be the underlying material; where glaciolacustrine veneers overlie till, the two materials are often permafrost-mixed near the contact zone (up to 1 m of mixing)

Glaciolacustrine blanket: >1 to 3 m thick, moderately well to poorly drained, continuous cover forming flat to undulating topography that locally obscures underlying geomorphology

GLACIOFLUVIAL DEPOSITS: light grey, moderately to poorly sorted, silt, sand, gravel and diamicton deposited behind or at the ice margin by flowing glacial meltwater

Glaciolacustrine blanket: >2 m thick, continuous sand and gravel cover forming flat to undulating topography that locally obscures underlying units and associated geomorphic patterns

Ice-contact glaciolacustrine sediments: undifferentiated deposits; poorly sorted sand and gravel with minor diamictons; deposited by glacial meltwater in direct contact with the glacier; 1 to >10 m thick; forming gently undulating to hummocky topography related to melting of underlying ice; features include kettles, kames and ridges; typically overlain by a veneer or blanket of glaciolacustrine sediments

Eskers and esker systems: stratified sand and gravel with minor diamicton, deposited by meltwater flow within tunnels beneath or within the glacier; present as 1–8 m high segments; the esker ridges are below lacustrine limit and in most places are overlain by a veneer or blanket of glaciolacustrine sediments; smaller esker segments are interpreted as beaded eskers, deposited into glacial Lake Agassiz

GLACIAL DEPOSITS: unsorted to poorly sorted diamictons (till) deposited in subglacial environments; the predominant widespread till is beige, sparsely fossiliferous, has a silty-sand matrix, and is calcareous (till matrix 24–53 wt. % total carbonate, 10.6–22.5 ppm CaO, and 11–17% Ca; with 30–70 ct. % calcareous pebbles); there is a wide range in the composition of the calcareous till, with significant variable proportions of eastern- and/or northeastern-sourced (calcareous, locally sourced (greenstone belt), regional (granitoid) and northern-sourced (Dabwani supergroup) clast concentrations; as such, the regional calcareous till is a hybrid till that contains a mix of inherited and overprinted detritus; weakly calcareous (till matrix <30 wt. % total carbonate, <10 ppm CaO, and <10% Ca; with <35 ct. % calcareous pebbles) and noncalcareous (till matrix <5 wt. % total carbonate, <5.4 ppm CaO, and <4% Ca; with <7 ct. % calcareous pebbles) tills were encountered at 3.3 and 2.9% of field sites, respectively (see Trommelen, 2014); the occurrence of weakly calcareous till is noted as T and noncalcareous till as Tnd; these units have not been coloured separately

Streamlined till: >2 m thick, subglacial till moulded beneath the glacier into linear ridges and/or furrows parallel to ice flow; drumlins, drumlinoid ridges, flutings; ridges are typically 0.1–3 km long and 1–10 m high

Hummocky till: supraglacial meltout (ablation) tills deposited by melting of stagnant ice; loose, texturally variable sandy to gravelly matrix, some sorting; angular to subangular clasts; locally includes poorly sorted sand and gravel; gently undulating to hummocky topography

Till veneer: >0.15–1 m thick, discontinuous till cover; underlying topography is discernible; unless otherwise noted, bedrock is assumed to be the underlying material

Till blanket: >1 m thick, continuous till cover forming flat to undulating topography that locally obscures underlying units and associated geomorphological patterns; occasional thinner patches of till may occur

PRE-QUATERNARY

BEDROCK

R **Precambrian rocks:** metasedimentary, metavolcanic rocks and associated intrusive rocks; may be overlain by a thin, discontinuous veneer of till and/or glaciolacustrine clay in upland areas

NOTE: In areas where the surficial cover forms a complex pattern, the area is coloured according to the dominant unit and labelled in descending order of dominance (e.g., RTV). Where underlying stratigraphic units are known, areas are coloured according to the overlying unit and labelled in the following manner:

O
Tb
For example, O₂GLV means thin organic veneer and less dominant
Tst glaciolacustrine veneer, all overlying streamlined till

Symbols

- Triline (wave-cut bench)
- Streamlined bedrock
- Crag-and-tail landform
- Drumlinoid ridge or fluting
- Iceberg scour
- Meltwater channel
- Meltwater channel corridor
- Minor moraine, undifferentiated
- Esker, direction known
- Esker, direction unknown
- Esker, washed, direction known
- Esker, washed, direction unknown

DESCRIPTIVE NOTES

Surficial geology of the Knee Lake area (NTS 53L14, 15, 53M1, 2)

Introduction

This map, one of four surficial geology map sheets (NTS 53L14, 15, 53M1, 2), is complemented by a field-based ice-flow indicator data repository (Trommelen, 2012a), and geological papers that focus on till composition (Trommelen, 2014; Trommelen and Ross 2014). This work builds on previous 1:250 000 scale mapping (Klassen and Nettville, 1978; Clarke, 1988) and till geochemistry data collected at 1 km spacing during Manitoba Geological Survey's Operation Superior project undertaken from 1999 to 2001 in the same area (Fedikow et al., 2001, 2002, 2009).

Methods

The surficial geology of the Knee Lake area was interpreted from 1:60 000 scale black and white airphotos, obtained from Natural Resources Canada. Aspects of the regional surficial geology were also gleaned from Shuttle Radar Topography Mission imagery (30 and 90 m resolution, United States Geological Survey, 2002) and SPOT orthomaps (Geobase®, 2005–2010). Field studies were conducted by helicopter and jet boat in August 2012. Helicopter landing sites were generally limited to open fens, and acid shutdown sites were rare. This project includes data from 198 field sites visited in 2012, and archival data from 695 Operation Superior field sites.

Bedrock geology

The underlying bedrock consists predominantly of the Oxford Lake–Knee Lake greenstone belt (Barry, 1959; Gilbert, 1985; Syme et al., 1988). These rocks are surrounded by intrusive granitoid rocks of several ages, which have not been subject to significant geological study.

Ice-flow history

Erosional ice-flow indicators, the orientations and relative ages of which were documented at 27 sites in the study area (Trommelen, 2012a), include micro-scale nondirectional indicators (chatiments and grooves) and directional indicators (chatiments, crescentic gouges and stoss-lee relationships). The Knee Lake area contains evidence of at least five different ice-flow phases (Figure 1). The old, rare, ice-flow phases trending to the southeast (between 150 and 160° azimuth, phase I), and the more widespread old phase trending to the west (between 255 and 280°, phase II) are likely correlative to the pre-Lilinoian Sundance and Lilinoian Amerly glaciations (Nielsen et al., 1986; Dredge and McLaren, 2011). Late Wisconsinan ice-flow phases include a rare but widespread southward-trending ice-flow phase (between 180 and 194°, and toward 200°, phase III), followed by a major southwest-trending phase (between 230 and 248°, phase IV). There is also a young, locally widespread, south-southwest-trending phase (between 212 and 220°, phase V). At one site, a rare young westward-trending ice-flow phase (phase VI) may correlate to the young westward-trending drumlinoid ridges situated between the town of Gillingham and city of Thompson, approximately 130 km northwest of the study area.

Till composition

The composition of the surface till was studied in detail (Figure 2) and the reader is referred to Trommelen (2014) and Trommelen and Ross (2014) for more information. Generally, the widespread regional till is beige, calcareous and sparsely fossiliferous. This heterogeneous till sheet was likely formed during ice-flow phases I and/or IV and V, when the large component of allochthonous calcareous detritus was transported at least 125 km (west or southwest) from the Paleozoic carbonate platform in Hudson Bay. Patchy, weakly calcareous, grey or beige till was encountered at 3.3% of field sites. Patchy, noncalcareous, brown, red or grey or beige till was encountered at 2.9% of field sites. These heterogeneous weakly calcareous to noncalcareous till samples were likely deposited during southerly ice-flow phase III, and protected from overprinting during the later southwesterly and/or westerly ice-flow phases. All three till types occur within streamlined landforms, as well as in till blankets or veneers over bedrock. This diverse geomorphology indicates that the processes of southwesterly drumlinization within the deglaciated Hayes lobe (300 by >400 km) was by subglacial modification/canibalization of pre-existing inherited sediment. As such, in the Knee Lake area, the formation of these widespread streamlined landforms may have occurred between or after ice-flow phases IV and V, but is not directly related to sediment transport.

Drift exploration

There is mineralization potential within the Knee Lake area. Gold potential occurs throughout, especially at the historic Johnson Knee Lake Gold mine and Johnson Knee Lake mine gold-silver occurrences (Southard, 1977). Massive sulphide-type mineralization was investigated near upper Knee Lake and at Cinder Lake (Gale et al., 1980). Rare earth-element-bearing minerals have been observed in the fine-grained silica-undersaturated syenite, the metamorphosed pegmatite and within calcite veining at Cinder Lake (Kressall et al., 2010). Unfortunately, there are no obvious glacial dispersal patterns from any of the field sites with elevated till matrix concentrations of multiple metals. In large part, this is because the widespread regional calcareous till is partially masking the local bedrock signature. The detailed data clearly shows that elevated metal concentrations within till matrix, presumably derived from the underlying greenstone belt, are predominantly detectable within the noncalcareous or weakly calcareous tills (<10 ppm CaO, inductively coupled plasma–emission spectrometry [ICP–ES], <10 wt. % Ca, instrumental neutron activation analysis [INAA], or <30 wt. % total CO₂ [Chittick or calcium–magnesium method]). Thus for most greenstone-belt derived elements, low concentrations within the till matrix should not be taken as indicative of a lack of local mineralization. Even a small difference in carbonate content (7 versus 10 wt. % Ca) may lead to drastically different element concentrations. As such, detailed attention must be paid to Ca wt. %, total CO₂ wt. % and/or CaO ppm concentrations during drift exploration analyses. The till within the Knee Lake area contains a mixture of inherited and overprinted subglacial detritus, and thus the transport directions of older ice-flow phases should not be ignored.

References

- Barry, G.S., 1959. Geology of the Oxford House - Knee Lake area, Oxford Lake and Gods Lake mining divisions, NTS 14 and 53L15, Manitoba Department of Mines and Natural Resources, v. 58, no. 3, 39 p.
- Clarke, M.D., 1988. Surficial geology, Oxford House, Manitoba, Geological Survey of Canada, Map 10734, scale 1:250 000.
- Dredge, L.A. and McLaren, I., 2011. Glacial stratigraphy of northern and central Manitoba; Geological Survey of Canada, Bulletin 680, 27 p.
- Dredge, L.A., Morgan, A.V. and Nielsen, E., 1990. Sangamon and pre-Sangamon interglaciations in the Hudson Bay Lowlands of Manitoba, Geographie physique et Quaternaire, v. 44, no. 3, p. 319–336.
- Fedikow, M.A.F., Nielsen, E., Conley, G.G. and Lenton, P.G., 2001. Operation Superior: kimberlite indicator mineral survey results (2000) for the northern half of the Knee Lake greenstone belt, northern Superior Province, Manitoba (NTS 53M1, 2, 3, 7 and 53L15), Manitoba Industry, Trade and Mines, Manitoba Geological Survey, Open File OF2001-5, 57 p.
- Fedikow, M.A.F., Nielsen, E., Conley, G.G. and Lenton, P.G., 2002. Operation Superior: multimedia geochemical survey results from the northern half of the Knee Lake greenstone belt, northern Superior Province, Manitoba (NTS 53M1, 2, 3, 7 and 53L15), Manitoba Industry, Trade and Mines, Manitoba Geological Survey, Open File OF2001-1, 2 v. plus CD-ROM.
- Fedikow, M.A.F., Nielsen, E., Conley, G.G. and Lenton, P.G., 2009. Operation Superior: multimedia geochemical survey results northeast of the Knee Lake greenstone belt, northern Superior Province, Manitoba (NTS 53M1, 53M2), Manitoba Science, Technology, Energy and Mines, Manitoba Geological Survey, Data Repository Item DR12009001, Microsof® Excel® file.
- Gale, G.H., Baldwin, D.A. and Koo, J., 1980. A geological evaluation of Precambrian massive sulphide deposit potential in Manitoba, Manitoba Department of Energy and Mines, Mineral Resources Division, Economic Geology Report ER79-1, 167 p.
- Geobase®, 2005–2010. Geobase orthomaps 2005–2010. Manitoba datasets <http://www.geobase.ca/geobase/en/index.do?product=Home> (January–June, 2012).
- Gilbert, H.P., 1985. Geology of the Knee Lake–Gods Lake area, Manitoba Energy and Mines, Geological Services/Mines Branch, Geological Report 83-18, 79 p.
- Klassen, R.W. and Nettville, J.A., 1978. Surficial geology, Knee Lake, Manitoba; Geological Survey of Canada, Preliminary Map 11-1978, scale 1:250 000.
- Kressall, R.D., Chakraborty, S., and Lenton, P.G., 2010. Petrological and geochemical investigation of the Cinder Lake alkaline intrusive complex, Knee Lake area, east-central Manitoba (part of NTS 53L15); in Report of Activities 2010, Manitoba Innovation, Energy and Mines, Manitoba Geological Survey, p. 146–158.
- Nielsen, E., Morgan, A.V., Morgan, A., Mott, R.J., Rutter, N.W. and Causse, C., 1986. Stratigraphy, paleogeology and glacial history of the Gillingham area, Manitoba; Canadian Journal of Earth Sciences, v. 23, p. 1541–1561.
- Southard, G.G., 1977. Exploration history compilation and review, including exploration data from cancelled assessment files, for the Gods, Knee and Oxford lakes areas, Manitoba, Manitoba Department of Mines, Resources and Environmental Management, Mineral Resources Division, Open File Report 77/5, 93 p.
- Syme, E.C., Conley, M.T., Lin, S., Shukla, T. and Jiang, D., 1998. Geological investigations in the Knee Lake area, northern Superior Province (parts of NTS 53L15 and 53M2); in Report of Activities 1998, Manitoba Energy and Mines, Geological Services, p. 88–95.
- Trommelen, M.S., 2012a. Field-based ice-flow indicator data, Oxford House–Knee Lake area, northern Manitoba (NTS 53L14, 15, 53M1, 2), Manitoba Innovation, Energy and Mines, Data Repository Item DR12012004, Microsof® Excel® file.
- Trommelen, M.S., 2012b. Quaternary geology of the Knee Lake area, northeastern Manitoba (NTS 53L14, 15, 53M1, 2), in Report of Activities 2012, Manitoba Innovation, Energy and Mines, Manitoba Geological Survey, p. 178–188.
- Trommelen, M.S., 2014. Glacial history and till composition, Knee Lake area, northeastern Manitoba (NTS 53L14, 15, 53M1, 2), Manitoba Mineral Resources, Manitoba Geological Survey, Geoscientific Paper GP2013-3, 30 p. plus 13 appendices.
- Trommelen, M.S. and Ross, M., 2014. Distribution and type of sticky spots at the centre of a deglaciated streamlined lobe in northeastern Manitoba, Canada; Boreas, v. 43, p. 557–576.
- United States Geological Survey, 2002. Shuttle Radar Topography Mission, digital topographic data, United States Geological Survey, URL <http://dds.cr.usgs.gov/srtm/>, 90 m cell, zipped hgt format (December 2011–June 2012).

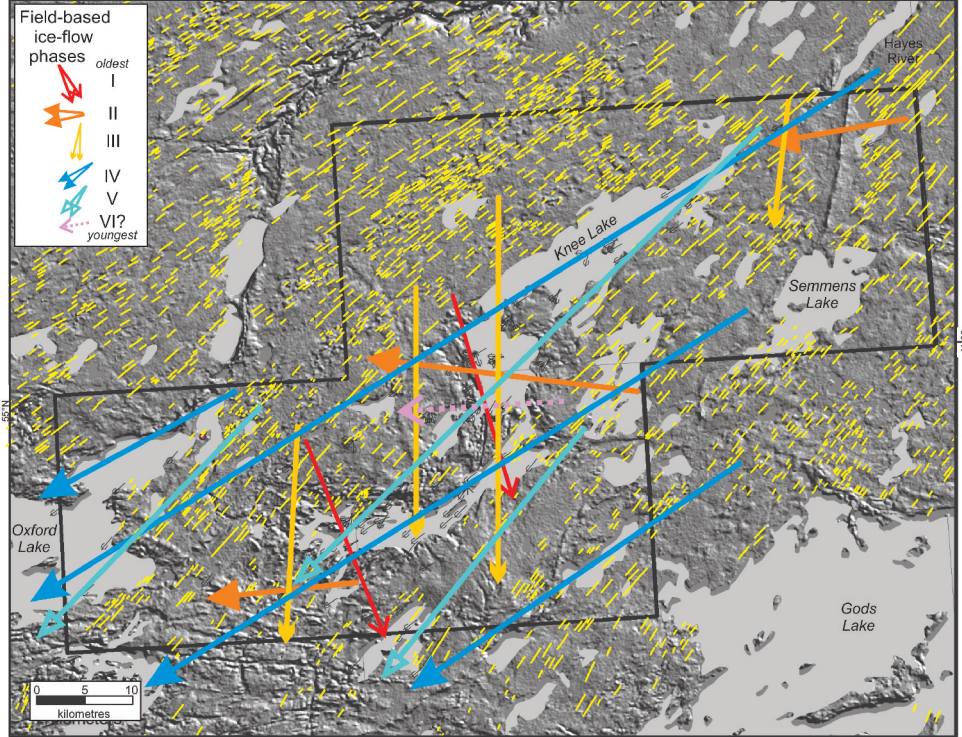


Figure 1. Generalized ice-flow history for the Knee Lake project area, interpreted from field-based micro-scale ice-flow indicators and shown in comparison to streamlined landform orientation (yellow lines).

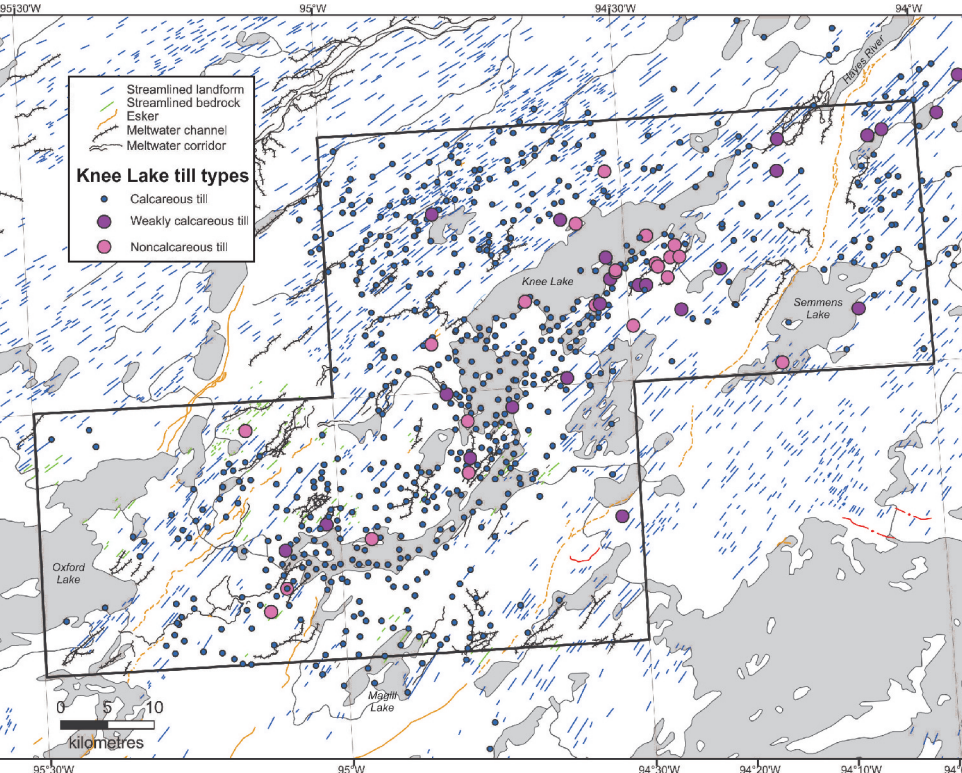
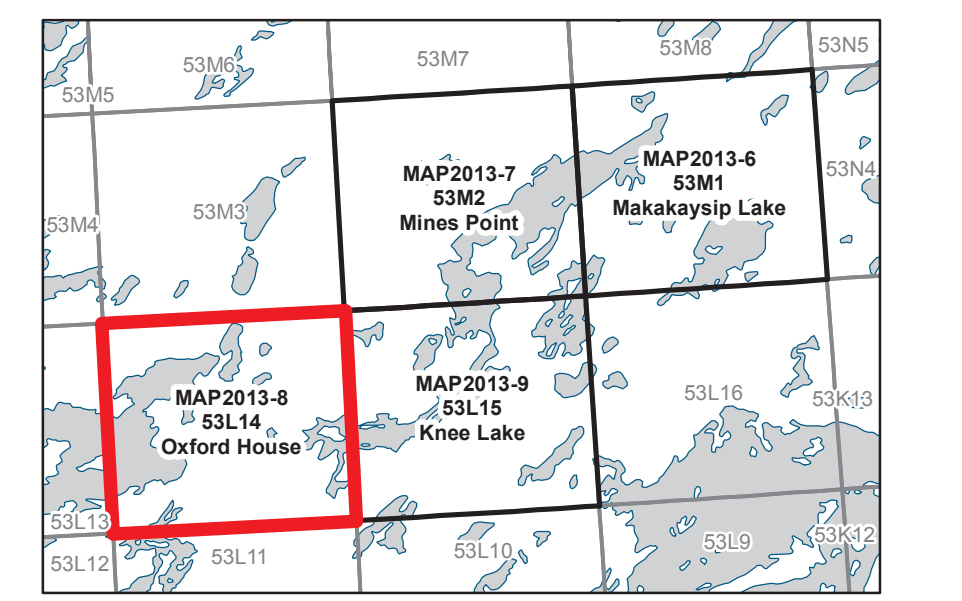
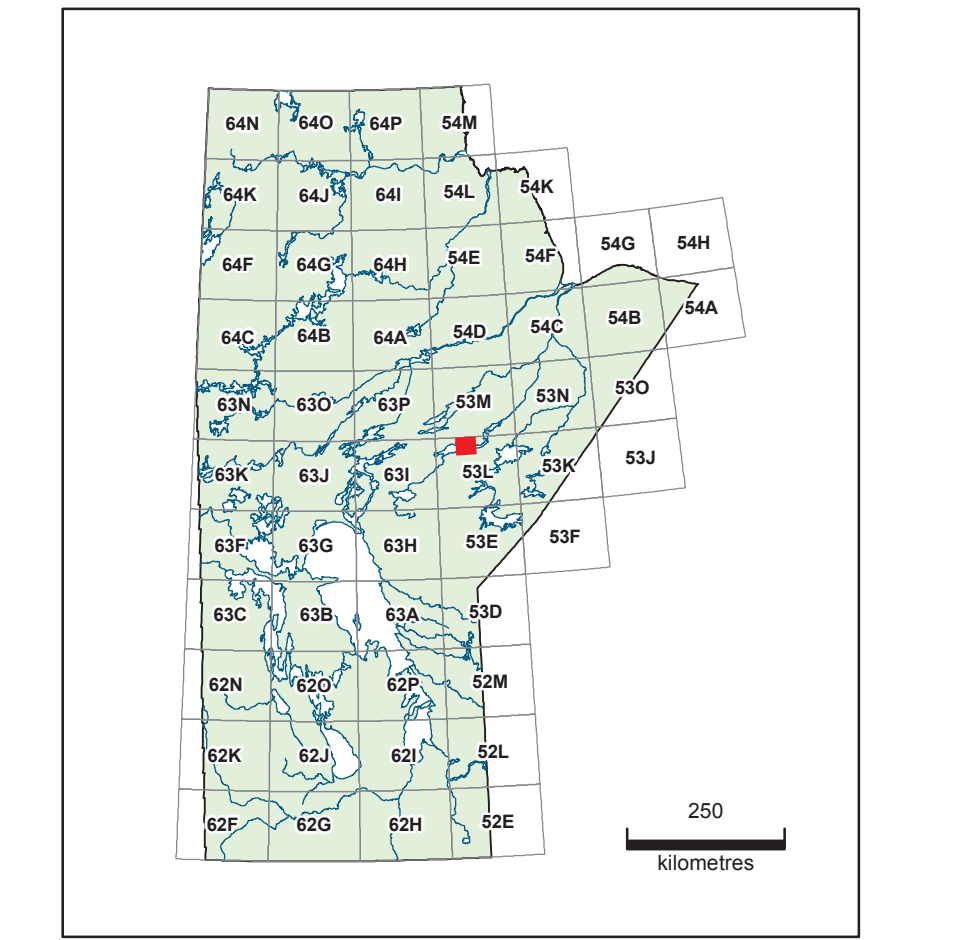


Figure 2. Simplified till composition at sampled sites within the project area. It should be noted that within these three classes the till is not homogenous. There is considerable variation in the lithologic composition between sites with no spatial correlation.

National Topographic System and index to adjoining maps



Location map



Geology by M.S. Trommelen (2012)
Aerophoto interpretation onto 1:50 000 scale airphotos by M.S. Trommelen. Cartography by B.K. Lenton and P.G. Lenton (2012–2013).

Recommended reference:
Trommelen, M.S., 2014. Surficial geology of the Oxford House map area, Manitoba (NTS 53L14); Manitoba Mineral Resources, Manitoba Geological Survey, Geoscientific Map MAP2013-8, scale 1:50 000.

Published by:
Manitoba Mineral Resources
Manitoba Geological Survey 2014

This publication includes digital versions of the point, line and polygon datasets portrayed on the map.

Copies of this map can be obtained from:
Manitoba Mineral Resources
Manitoba Geological Survey, Publication Sales
360–1395 Ellice Avenue
Winnipeg MB R3G 3P2
Canada

Phone: (204) 945-4154
Toll-free: 1-800-223-5215
E-mail: minesinfo@gov.mb.ca
Available for free download at www.manitoba.ca/minerals

