

LEGEND

- PALÆOZOIC**
- ORDOVICIAN**
- 10 Dolomite, dolomitic limestone
- 9 Mainly grey to pink gneissoid biotite granite, granodiorite and allied rocks; 9a, massive pink biotite and biotite-hornblende granite, granodiorite, and allied rocks, in part coarsely porphyritic; 9b, contact breccia of gabbro and diorite (7b) in granite (9a), containing less than 50 per cent 7b.
- ARCHÆAN OR PROTEROZOIC**
- 7a, 7b 7a, coarse-grained anorthositic gabbro, gabbro, and pyroxenite, some quartz gabbro and quartz diorite; 7b, fine-to medium-grained gabbro and diorite; minor quartz gabbro and quartz diorite; minor granite (9)
- 6 Quartz-porphyrty, in part chloritized; may be older than 4; relation to quartz-eye granite (5) uncertain
- 5 "Quartz-eye" granite and related porphyry; may be older than 4
- 4 Interbedded argillite and greywacke with minor slate, arkose, quartzite, breccia, and pebble beds; 4a, conglomerate, pebble beds; minor quartzite and greywacke
- ARCHÆAN**
- AMISK GROUP**
- 3 Basic volcanic breccia, agglomerate, and tuff; minor flows
- 1 Massive and pillowed andesite, dacite, and basalt; minor pyroclastic members; hornblende-dioritic schists; undifferentiated basic intrusions
- 2 Hornblende-feldspar gneiss and medium-grained amphibolites containing diorite derived from 1; in part probably intrusive
- A B A, rocks of granitic texture derived from volcanic rocks (1, 2, 3) and minor sediments (4) by action of granites (5, 9); in part garnetiferous; B, granitized and epidotized coarse amphibolites containing magnetite; derived by action of granite (9) on volcanic rocks (1)

MINERAL OCCURRENCES

Gold Au
Pyrrhotite and pyrite Py
Marcasite (copper reported) Mar (Cu)
Magnetite Mag

Areas of low or no rock outcrops
Bedding (horizontal, inclined, vertical, overturned)
Bedding (direction of dip known, upper side of bed unknown)
Schistosity or gneissosity (inclined, vertical, dip unknown)
Foliation or lineation
Direction and amount of plunge
Fault or shear zone
Anticlinal axis
Glacial striae
Prospect trench

Portage or winter road
Building
Survey monument
Township boundary (surveyed)
Township boundary (unsurveyed)
Stream (position approximate)
Marsh
Reef or small island
Height in feet above mean sea level

SYMBOLS

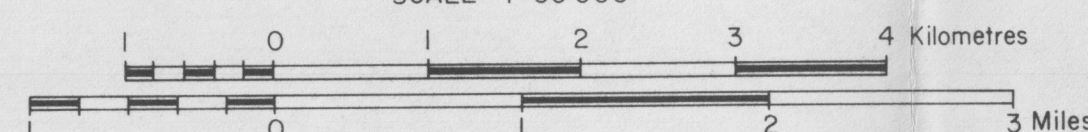
- ELECTRO-MAGNETIC ANOMALY**
- Strong Medium Weak
- Single Zone
- MAGNETIC ANOMALY**
- M M
- SELF-POTENTIAL ANOMALY**
- SP
- RESISTIVITY ANOMALY**
- R
- GEOPHYSICAL GRID BOUNDARY**
- 90349



Geological base map derived from Geol. Surv. Can. Map 906 A by M.S. Stanton.
Source data for this review obtained from Open File Assessment Reports.

MAP 78/2-1A
COMPILATION OF THE GROUND GEOLOGICAL SURVEYS
FROM THE OPEN ASSESSMENT FILES
IN THE
TRAMPING LAKE AREA
MANITOBA
63K / 9

SCALE 1:50 000



MINERAL EVALUATION AND ADMINISTRATION BRANCH
MINERAL RESOURCES DIVISION, WINNIPEG

To Accompany Open File Report 78/2

