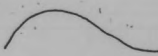

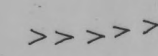
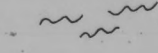

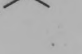
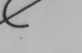
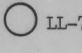


**QUATERNARY GEOLOGY OF THE  
COCKERAM LAKE AREA**

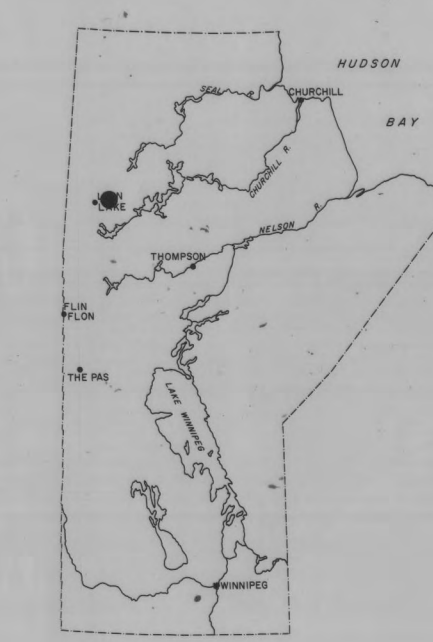
**Legend**

- QUATERNARY
- 4 ORGANIC DEPOSITS: Mainly peat, usually overlain by permafrost, small areas of sump and fen
  - 3 STRATIFIED DRIFT:
    - 3a. PROGLACIAL SEDIMENTS: Clay and silt
    - 3b. OUTWASH: Silt and fine sand
    - 3c. ICE-DOMANT FEATURES: Sand and gravel
  - 2 GLACIAL TILL: Includes some areas of bedrock outcrop
    - 2a. ABRADED TILL
    - 2b. BASAL TILL
- PRECAMBRIAN
- 1 BEDROCK (undifferentiated): Includes some areas of thin veneer of unconsolidated sediments

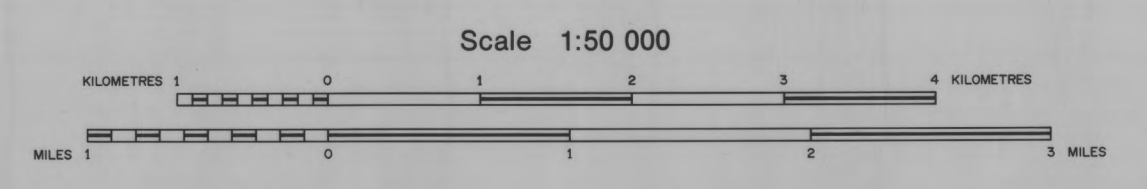
**Symbols**

-  GEOLOGICAL BOUNDARY (APPROXIMATE)
-  DRUMMLINGIAL RIDGE, FLUTED TILL
-  ESKER RIDGE
-  MORAINES RIDGE
-  BEDROCK OUTCROP
-  PALSA
-  GLACIAL STRIATION (NUMBERS INDICATE ANTIMETAL DIRECTION OF ICE FLOW)
-  SITE OF DRILL HOLE BY A.C. MONTGOMERY PORTABLE POND AGE (DEPTH IN FEET)

Geology by Neil D. O'Donnell, 1976



This map is a provisional summary of work carried out during the summer field season and is printed directly from the geologist's manuscript. It is not to be regarded as a final interpretation of the geology of the area.



Reference:

