

CALSTAN WEST BUTLER 1-31-9-29

1-31-9-29 WPM

K.B. 1784'

DOME COX H.B. EBOR 7-26-9-29

7-26-9-29 WPM

K.B. 1696'

CALSTAN DALY 1-30-9-28

1-30-9-28 WPM

K.B. 1691'

CALSTAN EAST CROMER PROV. 13-14-9-28

13-14-9-28 WPM

K.B. 1631'

CAN. DEV. MITCHELL EAST DALY 10-32-9-27

10-32-9-27 WPM

K.B. 1595'

IMPERIAL COMPTON 5-3-10-27

5-3-10-27 WPM

K.B. 1568'

BAY CANADIAN SUPERIOR HORN 4-12

4-12-10-27 WPM

K.B. 1523'

CALSTAN VIRDEN 2-26-10-26

2-26-10-26 WPM

K.B. 1451'

CALSTAN. ROUTLEDGE PROV. 13-29-9-25

13-29-9-25 WPM

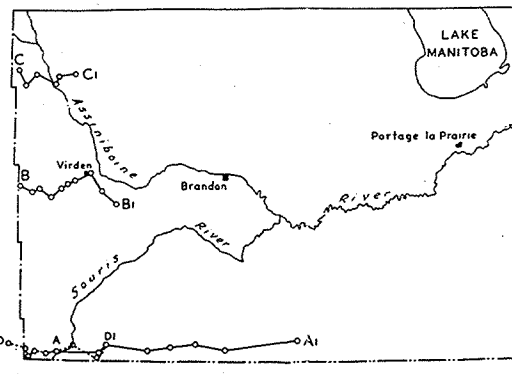
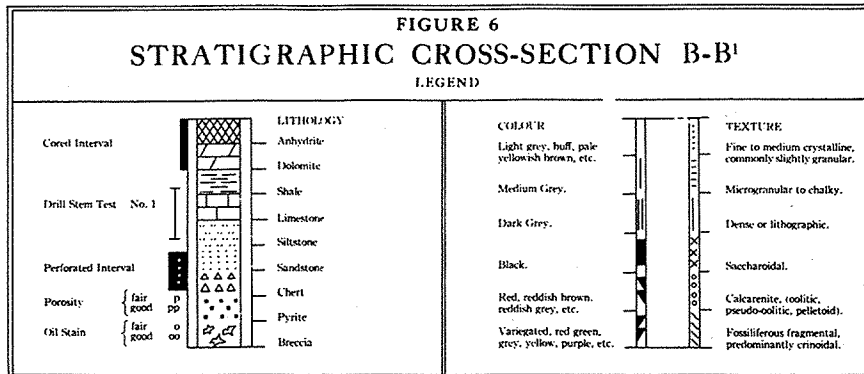
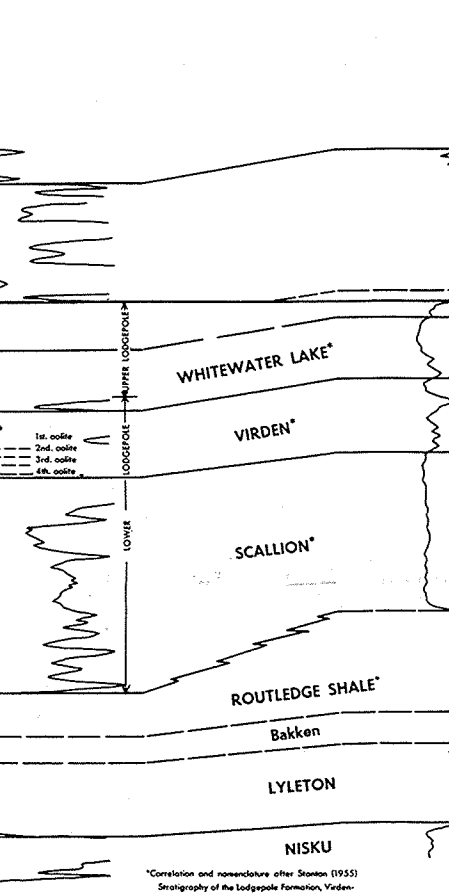
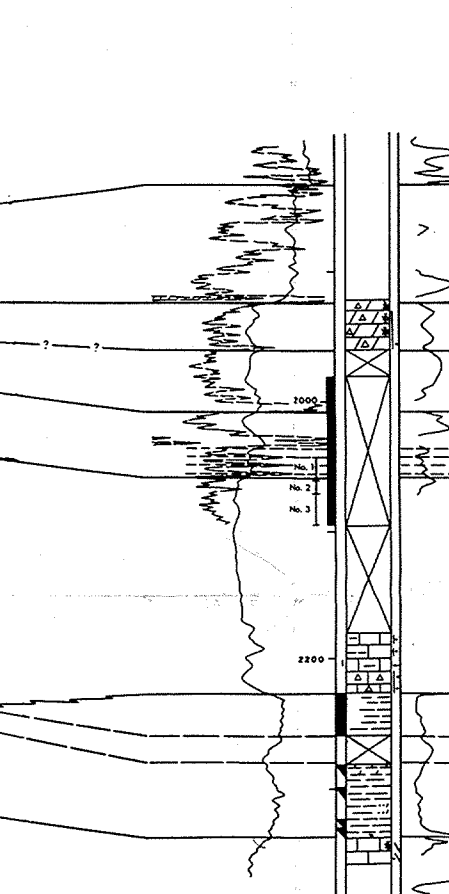
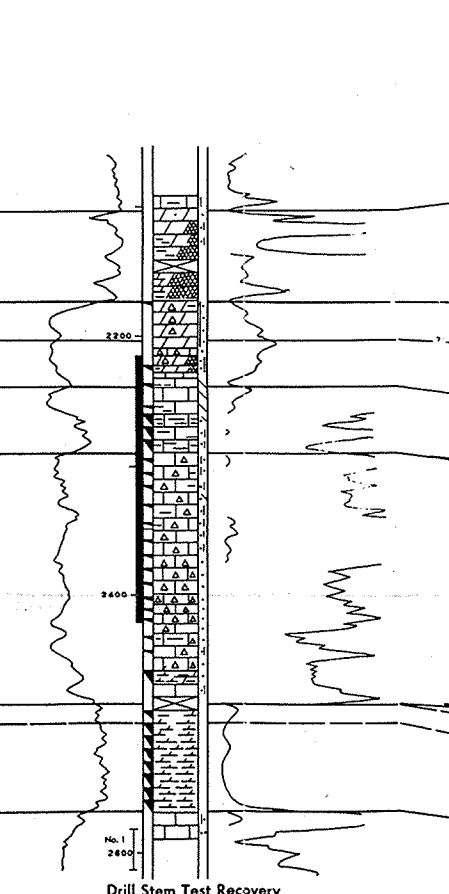
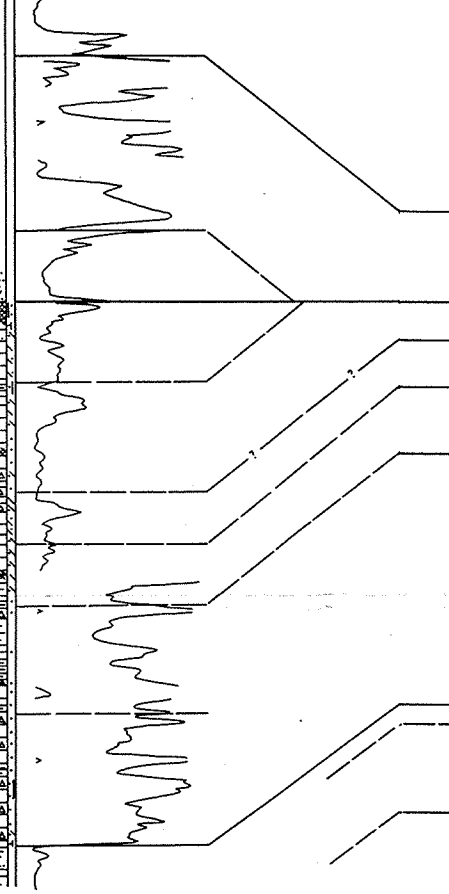
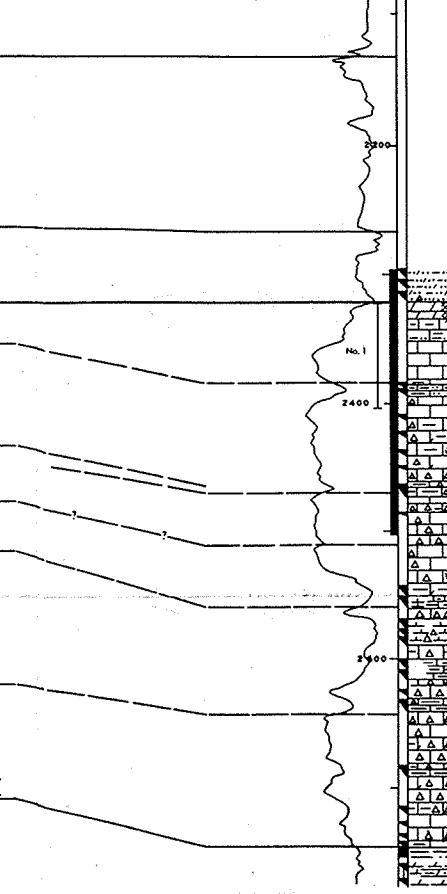
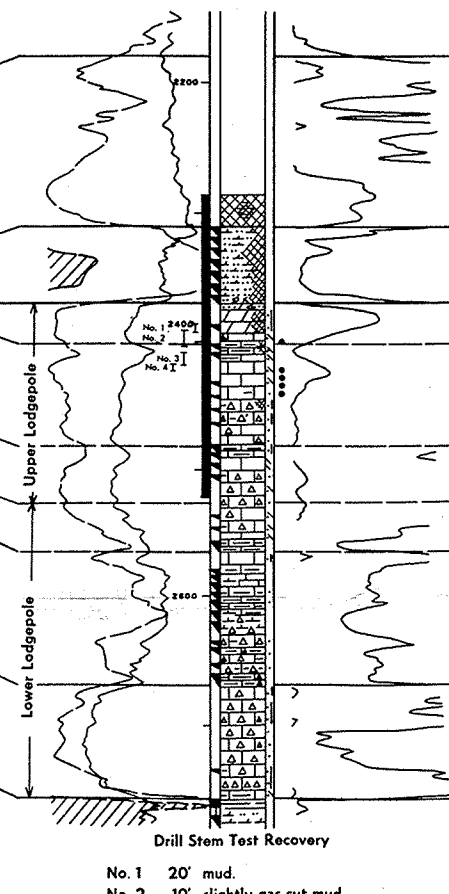
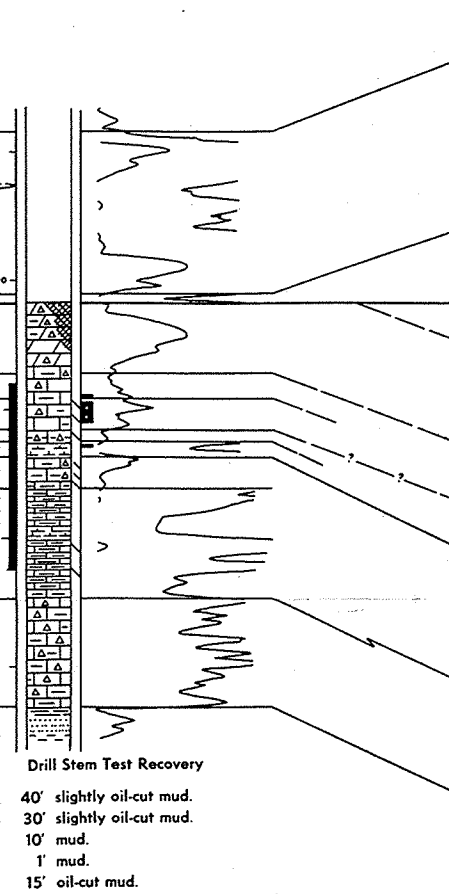
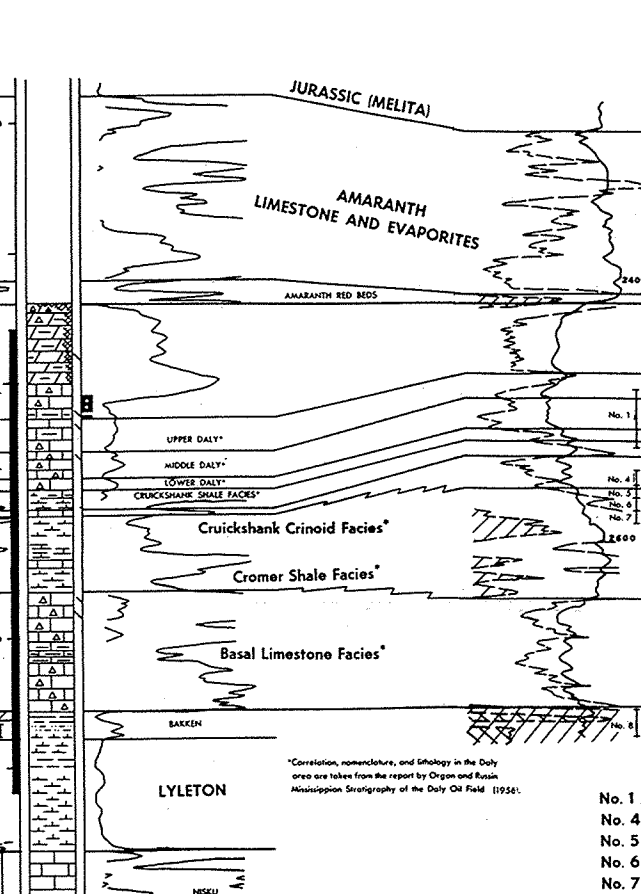
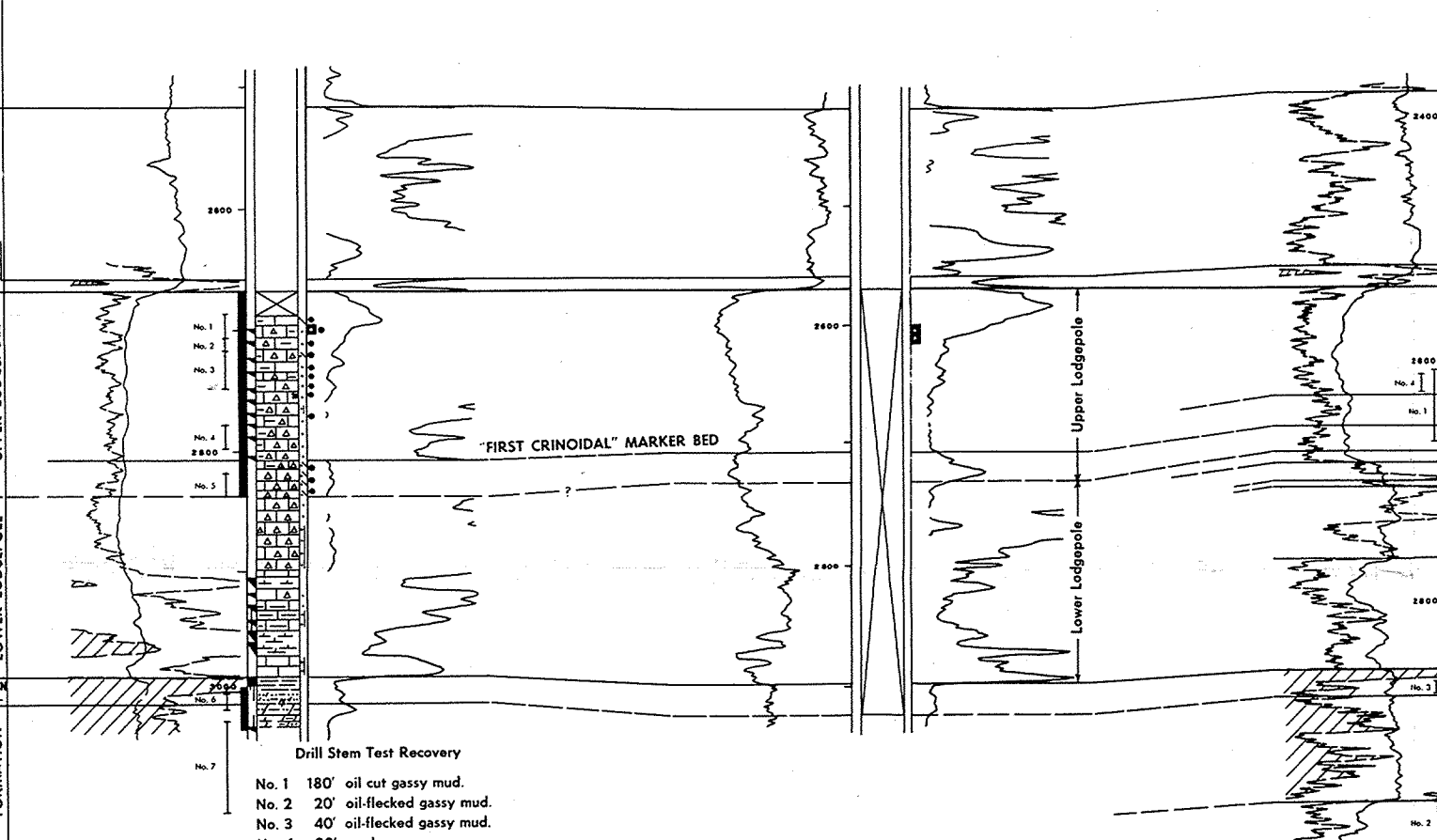
K.B. 1431'

McCARTY & COLEMAN OAK LAKE 13-6

13-6-9-24 WPM

K.B. 1431'

JURASSIC
AMARANTH LIMESTONE AND EVAPORITES
MISSISSIPPIAN
LODGEPOLE FORMATION
UPPER LODGEPOLE
LOWER LODGEPOLE
DEVONIAN
LYLETON FORMATION
Bakken



Manitoba
Department of Mines and Natural Resources
MINES BRANCH