



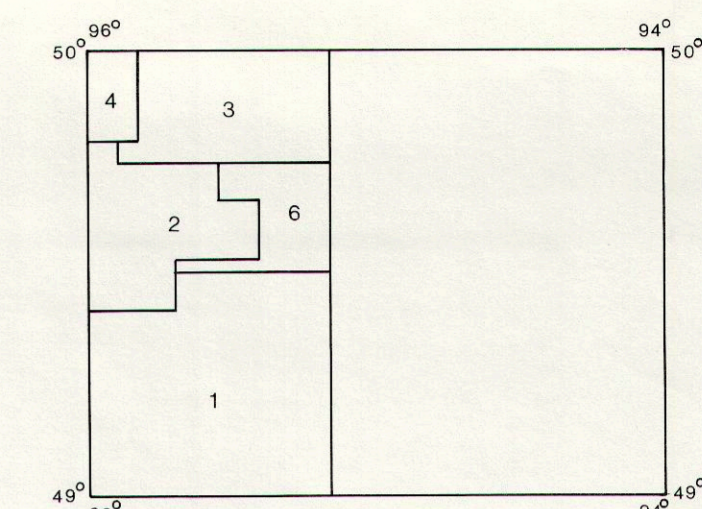


**LEGEND**

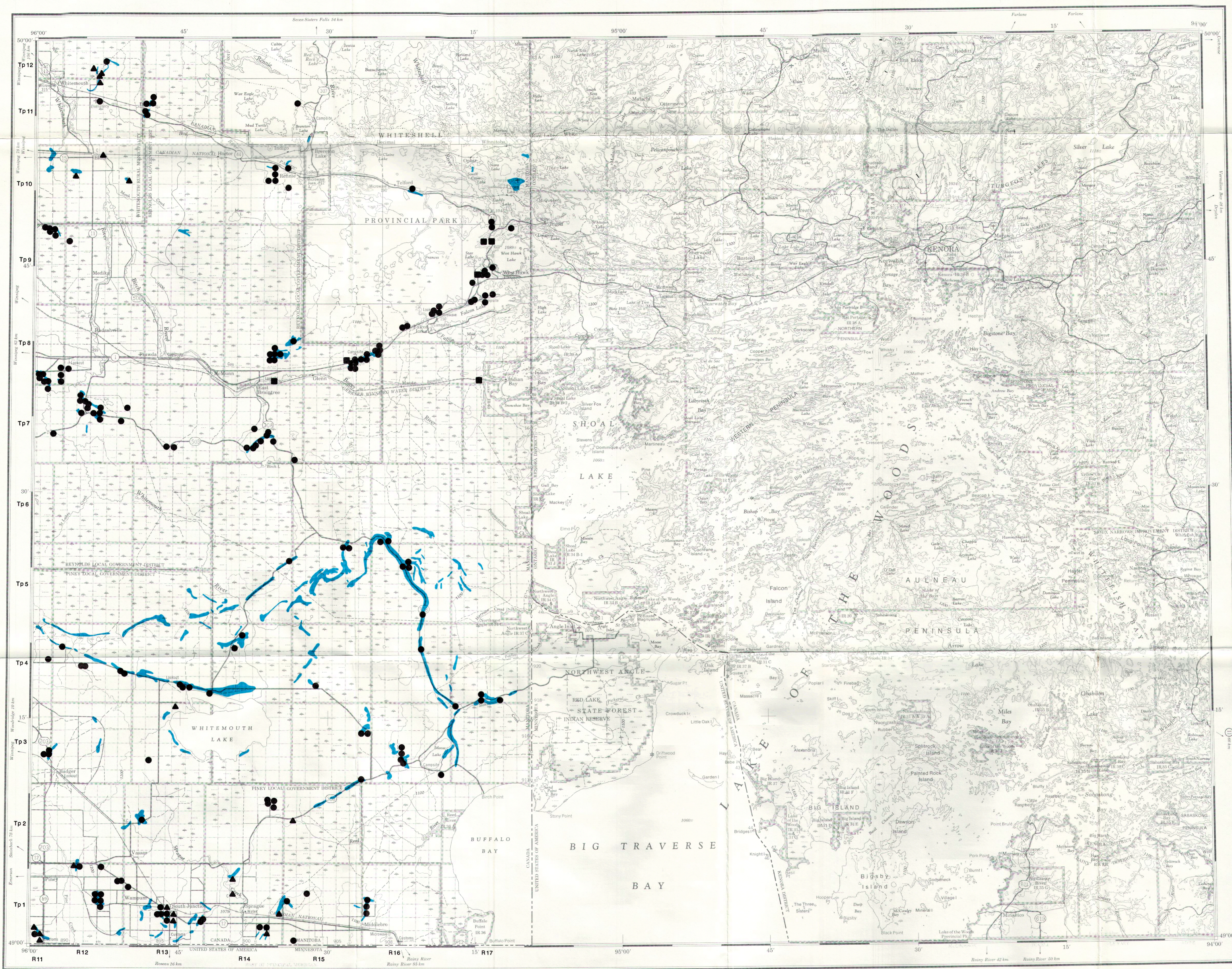
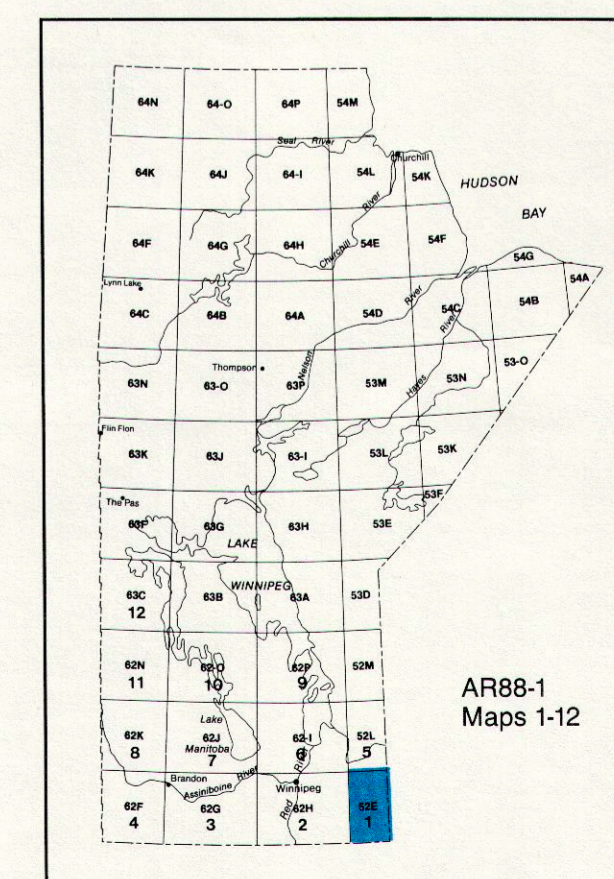
-  AGGREGATE DEPOSIT
-  GRAVEL PIT — PRIVATE SAND AND GRAVEL
-  GRAVEL PIT — CROWN SAND AND GRAVEL
-  BEDROCK QUARRY — CROWN/PRIVATE



**SOURCES OF INFORMATION**

- 1 Large, P. 1978. Quaternary Geology and Sand and Gravel Resources of the Southeastern Corner of Manitoba, Manitoba Energy and Mines, Preliminary Maps 1978 PSE-1, 1978 PSE-2, 1978 PSE-3 and 1978 PSE-4, 1:50000.
- 2 Matile, G. In Progress. Surficial Geology and Aggregate Resource Inventory of the Local Government District of Reynolds, Manitoba Energy and Mines, Aggregate Report, 1:50000.
- 3 Nielsen, E., 1975. Quaternary Geology of a Part of South-eastern Manitoba, South Sheet, Manitoba Energy and Mines, Geological Report GR80-6, 1:100000.
- 4 Young, R. V. 1985. Surficial Geology and Aggregate Resource Inventory of the Rural Municipality of Whitemouth, Manitoba Energy and Mines, Aggregate Report AR84-1, 1:50000.
- 5 Manitoba Mineral Resources Division, 1980. Mineral Map of Manitoba, Map 80-1, 1:1000000.
- 6 Manitoba Department of Highways and Transportation, Aggregate Resource Inventory, Block Files 10-12, 22-24 and 34-36.
- 7 Manitoba Energy and Mines, Mining Recording Office, Quarry Mineral Disposition Files, Typs 1-12 and Rges 11-17E.

**AGGREGATE RESOURCES  
COMPILATION MAP SERIES  
MAP AR88-1-1  
KENORA  
NTS 52E**



This map is a compilation of all known aggregate deposits, gravel pits and bedrock quarries in the area. The deposits include sand, sand and gravel and gravel. No distinction has been made based on the quality of the deposits. Where the aggregate deposit is small or a local feature, only the pit symbol has been shown. Where several pits are located within a small area, a single symbol has been used.

The information is based on aggregate reports, preliminary maps, surficial geology reports, Manitoba Department of Highways and Transportation aggregate resource inventories and Manitoba Energy and Mines quarry mineral disposition files. Mineral ownership data was compiled from the above data sources and Crown Lands Branch. No distinction has been made based on the mineral ownership of the bedrock quarries. This map is not to be regarded as final interpretation of the geology and mineral ownership of the area. References are included for users wishing to verify critical information.

Reasonable effort has been made to ensure the accuracy of the information presented on this map. However, Manitoba Energy and Mines and UMA Engineering Ltd. assume no liability for any errors that may occur. Additional information concerning the aggregate deposits, gravel pits or bedrock quarries may be obtained from: Manitoba Energy and Mines, Aggregate Resource Section, 555-330 Graham Avenue, Winnipeg, Manitoba, Canada, R3C 4E3.

Compilation and Cartography by: UMA Engineering Limited.

Suggested reference to this publication:

Manitoba Energy and Mines, 1988; Aggregate Resources Compilation Map Series, Map AR88-1-1, Kenora, NTS 52E, 1:250000.

A contribution by Manitoba Energy and Mines, Mines Branch, to programming under the Canada-Manitoba Mineral Development Agreement (MDA), a subsidiary agreement of the Economic and Regional Development Agreement (ERDA).

Base map produced by the Surveys and Mapping Branch, 1977, Department of Energy, Mines and Resources.

