

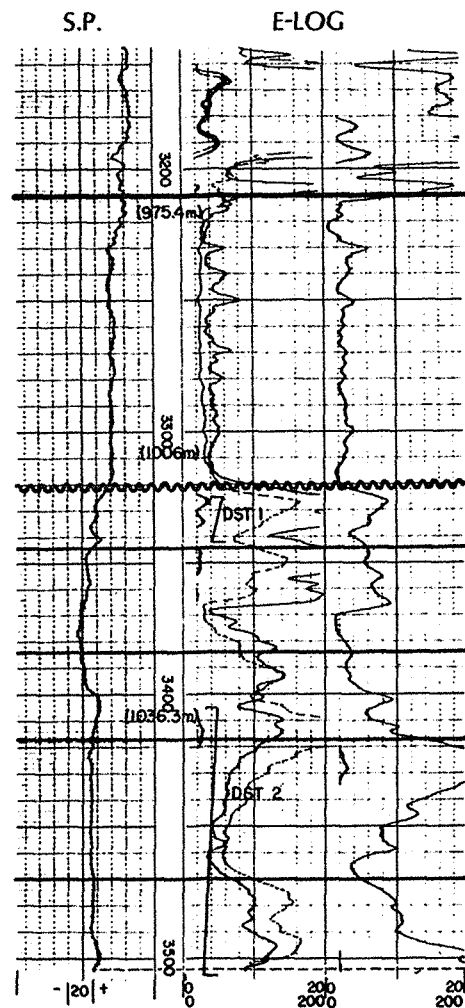
B

NORTHERN DEVELOPMENT

NELLIE LAKE

3-17-1-21 W.P.M.

KB: 2238' (682.1m.)



DST 1 : 1013.5 - 1018m. rec. 6m. salty water -
cut drilling mud.

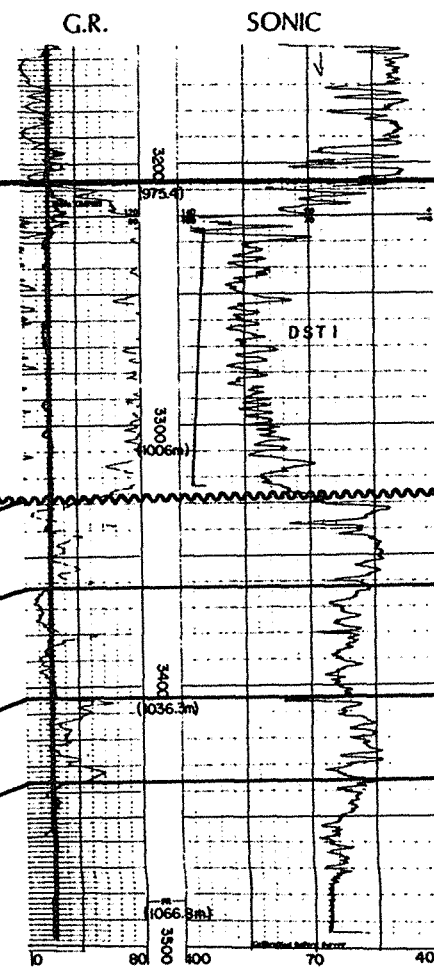
DST 2 : 1037.8 - 1068.3m. 470.9m. muddy salt water.

GEOG CHAGOS

LULU LAKE PROV.

6-23-1-21 W.P.M.

KB: 2296' (699.8m.)

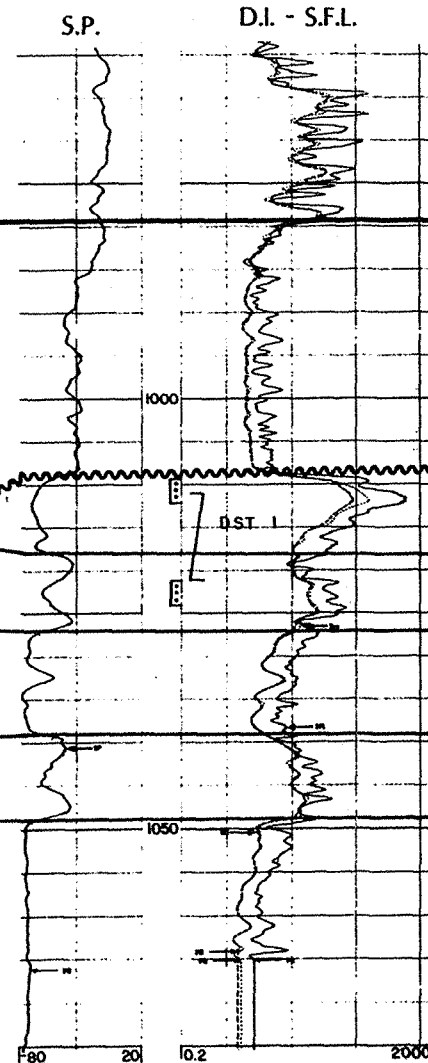


DST 1 : 986 - 1012.9m. rec. 36.6m. mud.

ANDEX LULU LAKE PROV.

8-23-1-21 W.P.M.

KB: 703.6m.



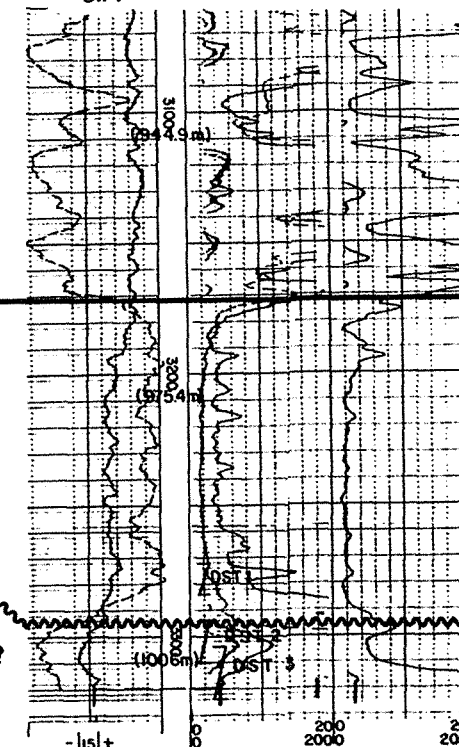
DST 1 : 1011 - 1021m. rec. 39m. gas-cut;
mud-cut oil, 94m. gas-cut frothy oil.

ROYALITE TRIAD LULU LAKE#2

6-24-1-21 W.P.M.

KB: 2288' (697.4m.)

S.P. E-LOG



SCH. T.D. 3820
DALS. T.D. 3824

DST 1 : 997.3 - 1010m. rec. 1.8m. mud.

DST 2 : 1004 - 1008.5m. rec. 19.8m. mud & salt water.

DST 3 : 1010.1 - 1013.2m. rec. 25.9m. salt water.

HORIZONTAL SCALE
0 1Km. 2Km.
(0.62miles) (1.2miles)

DATUM

(JURASSIC LOWER AMARANTH
"RED BEDS" FORMATION)

FIGURE : 14

LULU LAKE STUDY AREA

STRATIGRAPHIC CROSS-SECTION B - B'

Date: June, 1986

Perforated Interval