

DALY UNIT NO. 7
WATERFLOOD EOR PROJECT
ANNUAL REPORT FOR 2014

May 25, 2015

Tundra Oil and Gas Partnership

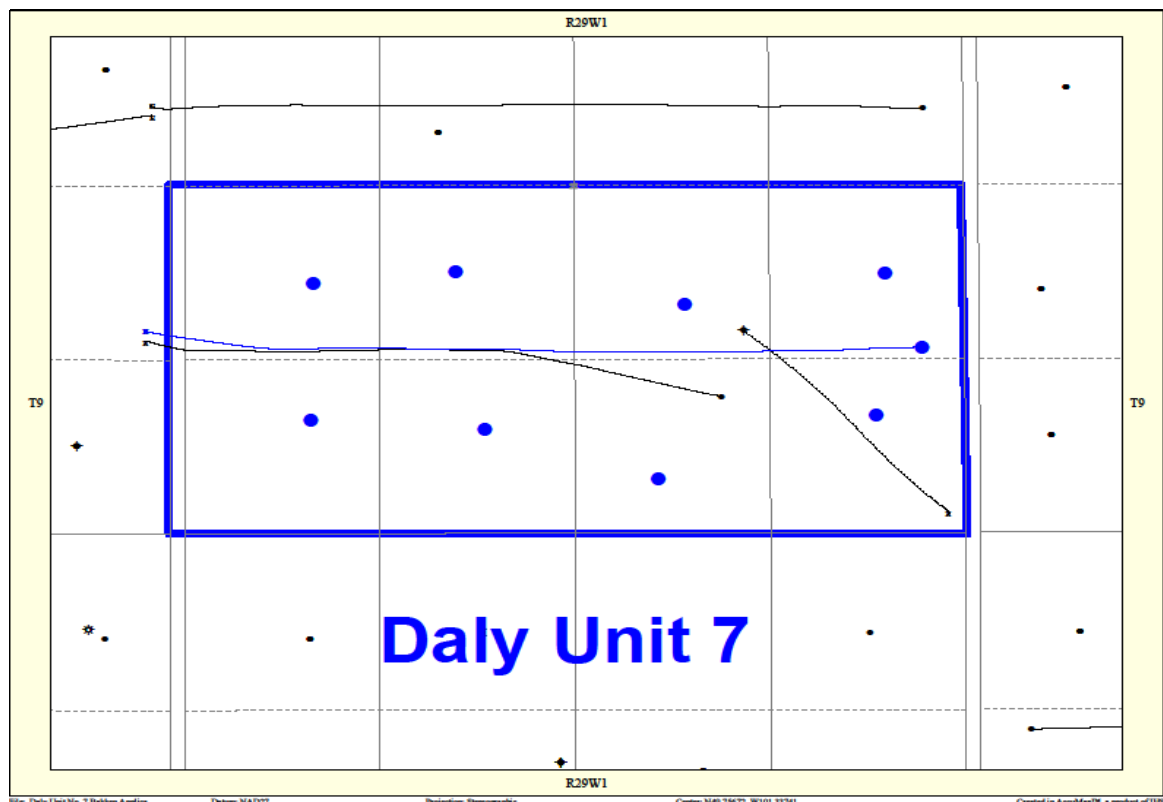
Table of Contents

INTRODUCTION.....	3
DISCUSSION.....	3
Production History	3
Waterflood History.....	5
Waterflood EOR Operating Strategy and Performance	6
Water Source and Quality	6
Injection Wellhead Pressures	6
Reservoir Pressure	6
Well Servicing	6
Waterflood Performance Discussion	6
List of Appendices.....	7
Appendix A: Well List and Well Status	
Appendix B: Daly Unit No. 7 Injection Pattern Summary	
Appendix C: Daly Unit No. 7 Reservoir Pressure Summary	
Appendix D: Injector Pattern Production/Injection Rates, Cumulative and VRR	
Plot and Table	

INTRODUCTION

Daly Unit No. 7 Enhanced Oil Recovery (EOR) Waterflood Project was approved effective January 1st, 2014 with Tundra Oil and Gas as Operator. The EOR project area, outlined in blue in Figure 1, contains 8 vertical and 1 horizontal producing well in 8 LSDs in Township 9, Range 29W1. Well list and well status is available in Appendix A.

Figure 1: Daly Unit No. 7 Area Outline



In accordance with Section 73 of the Manitoba Drilling and Production Regulation, Tundra submits the following 2014 Annual Progress Report for Daly Unit No. 7.

DISCUSSION

Production History

For the wells included in Daly Unit No. 7, production started in July 2001 with the 00/02-22-009-29W1/00 well. Oil production peaked at 16.5 m³/d in September of 2003. In 2014, the average production for the unit was 4.92 m³/d of oil and 20.93 m³/d of water, and the average WOR was 4.64 m³/m³. There is currently no water injection in Daly Unit No. 7. The rates and WOR are presented in Figure 2.

Figure 2: Daly Unit No. 7 Production/Injection Rates and WOR vs. Time

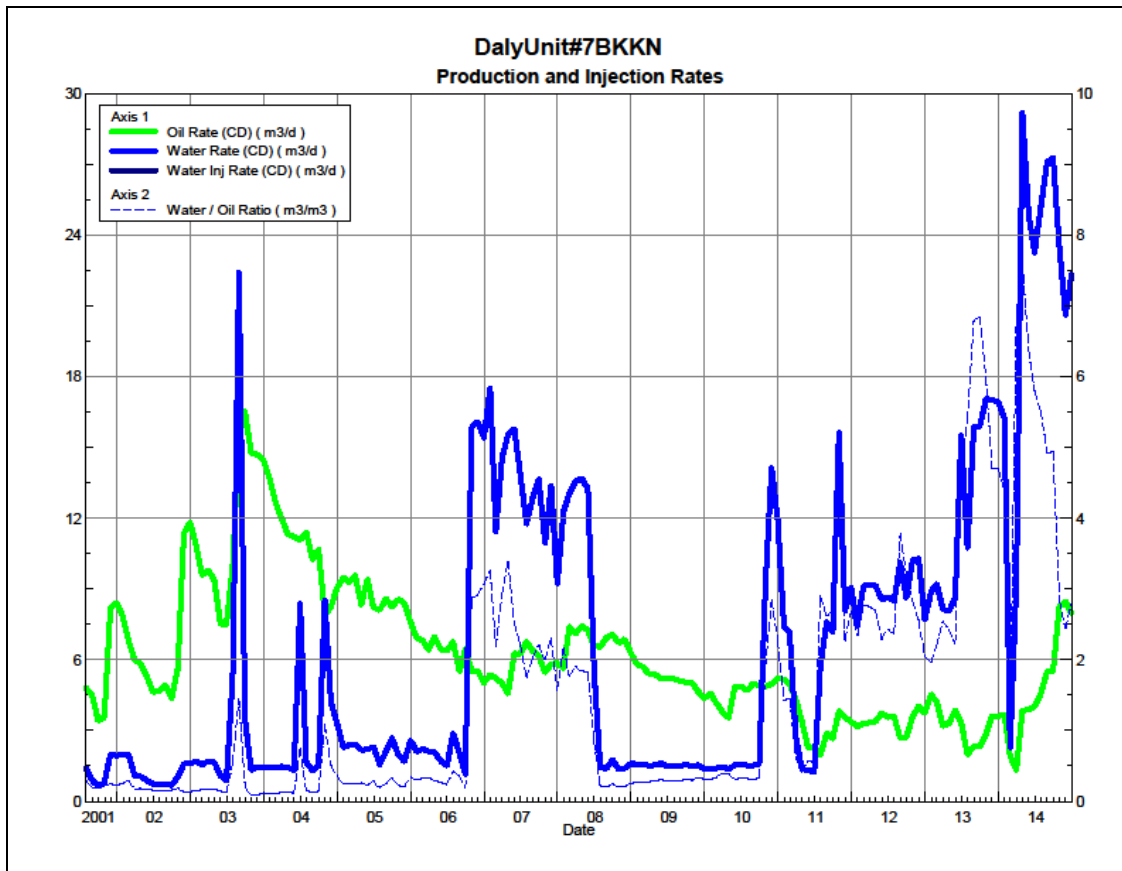
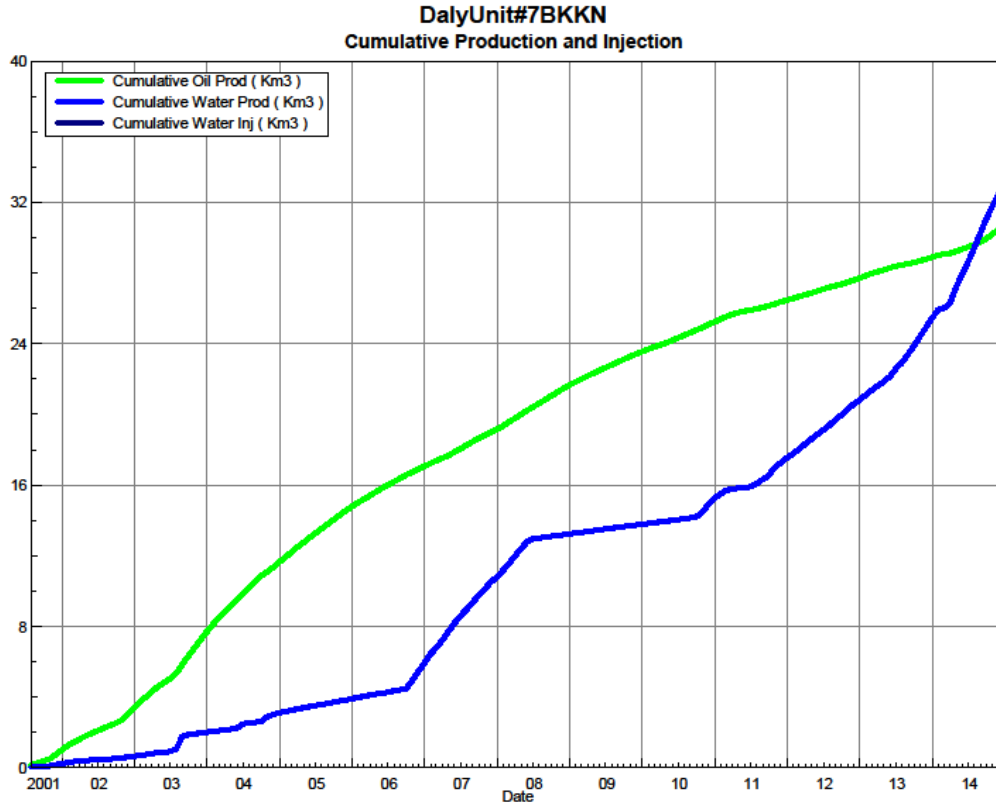


Figure 3 shows the cumulative production for Daly Unit No. 7 to the end of December 2014 as 30.7 e³m³ of oil and 33.1 e³m³ of water, representing a 5.9% recovery factor of the OOIP.

Figure 3: Daly Unit No. 7 Cumulative Oil, Water and Water Injected vs. Time



Waterflood History

Daly Unit No. 7 is still in the development phase at the end of 2014. In February 2014, the single proposed horizontal injector (02/08-22-009-29W1) for the unit was drilled between the existing vertical producing wells, completing an effective 40 acre line drive waterflood pattern. In April 2014, the proposed injector was put on production. In order to maximize recovery from this Unit, Tundra expects to produce the future injector for a short period of time to clean-up the reservoir near the wellbore. All horizontal wells are fracture stimulated to improve the injection rates.

Production performance by injector pattern are summarized in Appendix B.

Any future revisions to the waterflood development or surveillance plan would be based on new production or performance response data, technical studies, or observed reservoir behavior and reserves recovery interpretations.

Waterflood EOR Operating Strategy and Performance

Water Source and Quality

The injection water for Daly Unit No. 7 will be sourced from the 16-32-007-29W1 well (Lodgepole formation). The water is treated at the 03-04-007-29W1 battery where it is filtered to 0.5 microns and has scale inhibitor added. The injection water is then distributed to the injectors through the dedicated infrastructure system.

Injection Wellhead Pressures

No wellhead injection pressure is available for Daly Unit No. 7.

Reservoir Pressure

Where practical, Tundra is committed to collecting pressure data from newly drilled injection wells. For Daly Unit No. 7, pressure data is currently available for the 02/08-22 location. A summary table is presented in Appendix C. Pressures are corrected to a common datum of -450 m SS for comparison with other units in the area.

Well Servicing

Table 1 lists the maintenance that was required in Daly Unit No. 7 in 2014.

Table 1: Service and Maintenance in Daly Unit No. 7

00/02-22-009-29W1/0	Pump Change	7/16/2014
---------------------	-------------	-----------

Waterflood Performance Discussion

At the end of 2014, there is currently no water injection in Daly Unit No. 7. The waterflood area had 1 injection well drilled in 2014 that is currently on production. Water injection is anticipated to begin in Q2 2015, after the expected conversion of the 02/08-22 producer to an injector.

A summary table of the injector pattern(s) is presented in Appendix B. Plots of the production are presented in Appendix D for each of the injection pattern(s).

List of Appendices

Appendix A: Well List and Well Status

Appendix B: Daly Unit No. 7 Injection Pattern Summary

Appendix C: Daly Unit No. 7 Reservoir Pressure Summary

Appendix D: Injector Pattern Production/Injection Rates, Cumulative and VRR
Plot and Table

Appendix A

UWI	Well Status
100/01-22-009-29W1/02	Capable of OIL Prod
100/02-22-009-29W1/00	Capable of OIL Prod
100/03-22-009-29W1/02	Capable of OIL Prod
100/04-22-009-29W1/02	Capable of OIL Prod
100/05-22-009-29W1/00	Capable of OIL Prod
100/06-22-009-29W1/02	Capable of OIL Prod
100/08-22-009-29W1/02	Capable of OIL Prod
102/07-22-009-29W1/02	Capable of OIL Prod
102/08-22-009-29W1/00	Capable of OIL Prod

Appendix B

Daily Unit No. 7 Pattern Summary as of December 2014

Pattern Name	Injector Location (009-29W1)	Status	Supported Wells (009-29W1)	No. of Supported Wells	Allocation Factor	Pattern Prod Start Month	Inj Start Month	Oil Rate (m³/d)	Water Rate (m³/d)	WOR (m³/m³)	Water Injection (m³/d)	Cum Oil (E³m³)	Cum Water (E³m³)	Cum Inj Water (E³m³)	Monthly VRR	Cum VRR
02/08-22-09-29 Injector	02/08-21	Capable of Oil Production	01-22, 02-22, 03-22, 04-22, 05-22, 06-22, 02/07-22, 08-22	8	1	Jul 2001	-	7.96	22.34	2.81		30.7	33.1	0.0	0.0	0.00

APPENDIX C

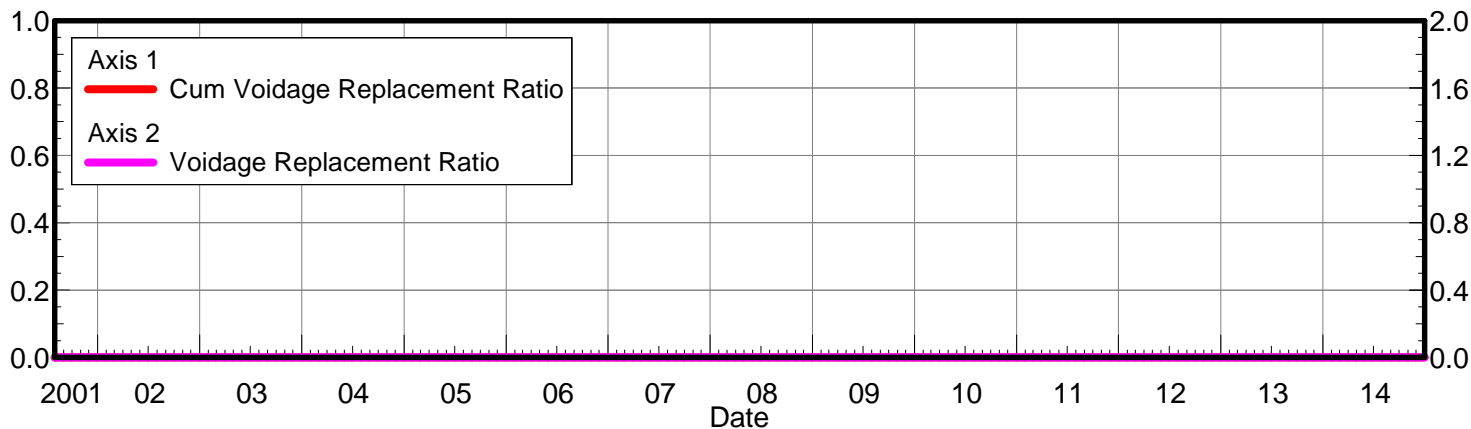
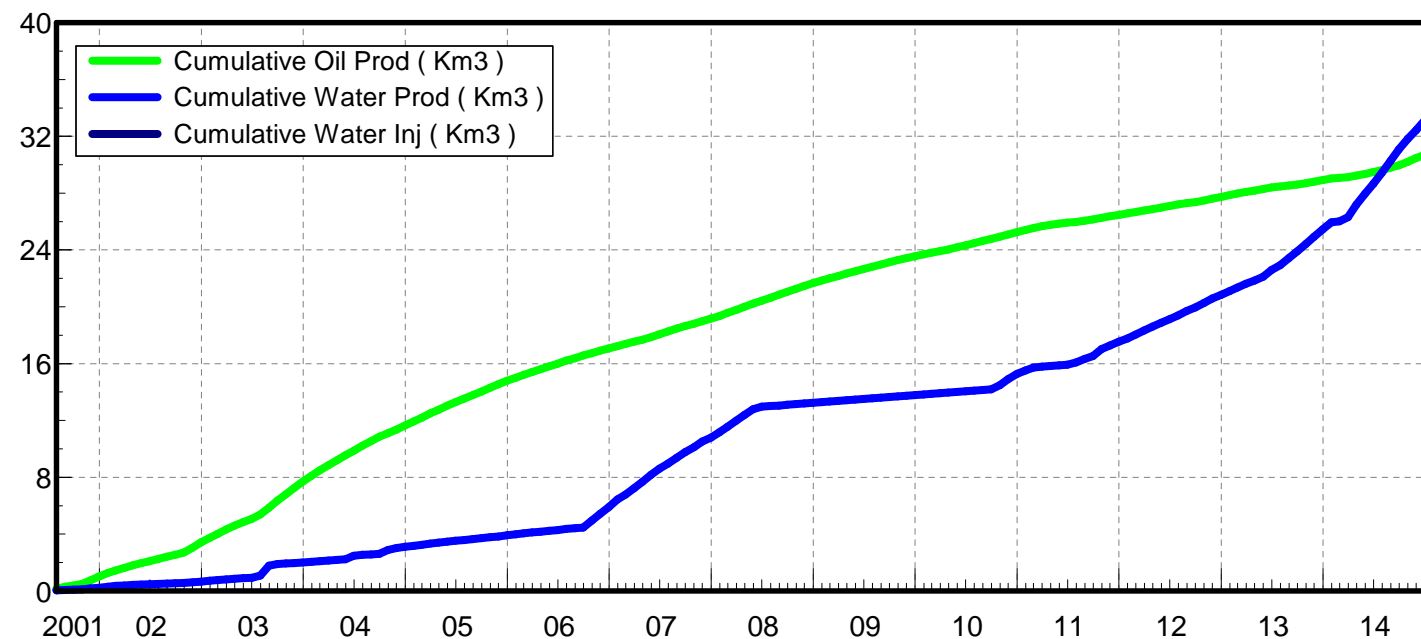
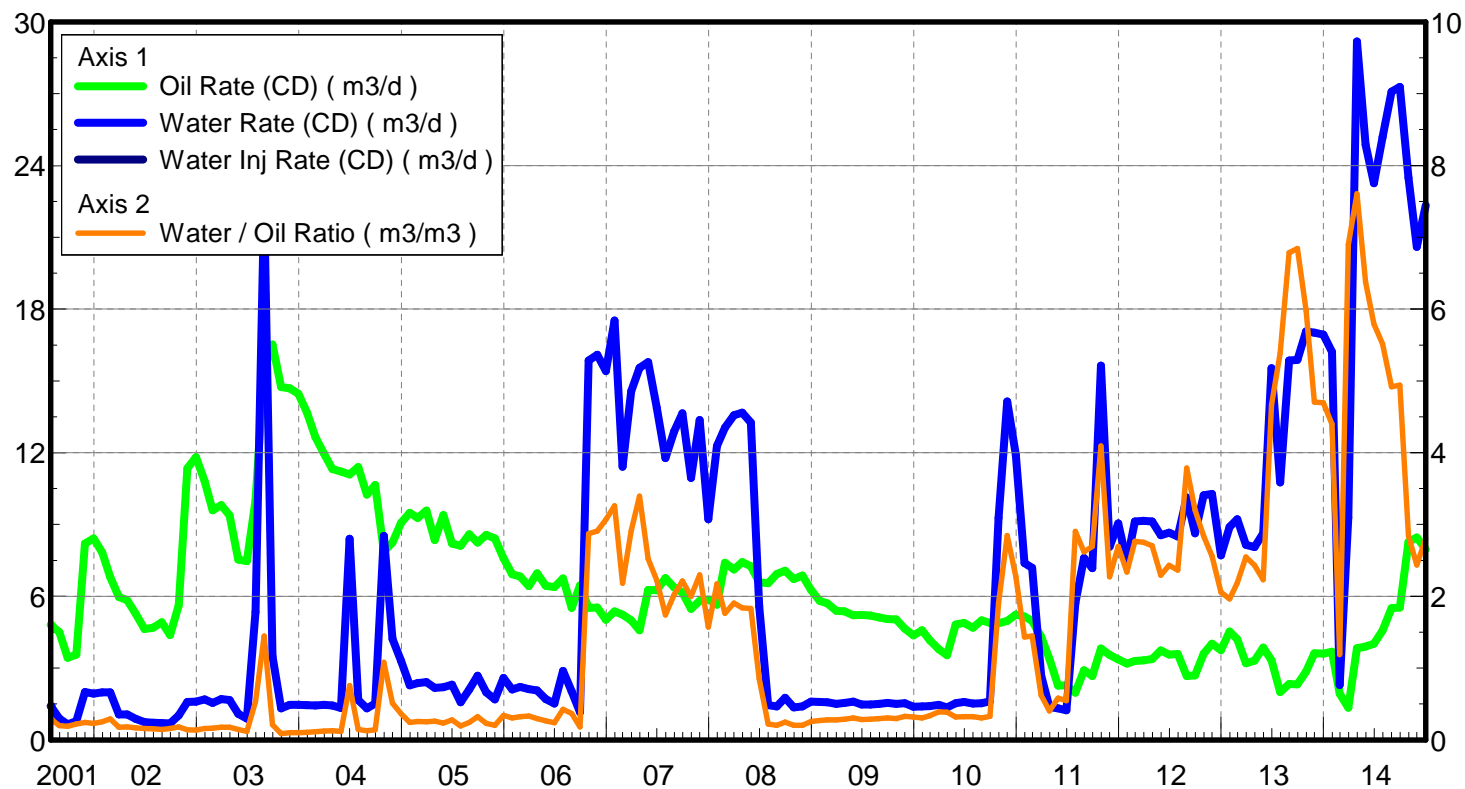
Daly Unit No. 7 - Pressure Summary

Location	Test Date	Final Pressure (kPaa)	MPP (mTVD)	KB	Datum Depth	Gradient	Pressure @ -450 masl
102/08-22-009-29W1/00	Feb 18th - March 11th, 2014	3286.6	919.7	540.0	-450	8.25	3866

Appendix D

Rates and VRR Plots

Oil Formation Vol Factor : 1.00150 m³/m³ Pattern: 02/08-22-009-29Inj Set: DalyUnit#7BKKN Oil Rate (CD) : 7.96 m³/d
 Water Formation Vol Factor : 1.00150 m³/m³ May 22, 2015 Water Rate (CD) : 22.34 m³/d
 Water / Oil Ratio : 2.81 m³/m³ Operator: Tundra_O&G_Prtshp Water Inj Rate (CD) : * m³/d



Date	Oil Rate (CD) m3/d	Water Rate (CD) m3/d	Water Oil Ratio m3/m3	Water Inj Rate (CD) m3/d	Cum Oil Prod Km3	Cum Water Prod Km3	Cum Water Inj Km3	Voidage Replacement Ratio	Cum Voidage Replacemt Ratio
7/31/2001	4.81	1.41	0.29		0.15	0.04	0.00	0.000	0.000
8/31/2001	4.50	0.89	0.20		0.29	0.07	0.00	0.000	0.000
9/30/2001	3.43	0.65	0.19		0.39	0.09	0.00	0.000	0.000
10/31/2001	3.56	0.78	0.22		0.50	0.12	0.00	0.000	0.000
11/30/2001	8.21	2.00	0.24		0.75	0.18	0.00	0.000	0.000
12/31/2001	8.42	1.94	0.23		1.01	0.24	0.00	0.000	0.000
1/31/2002	7.83	1.99	0.25		1.25	0.30	0.00	0.000	0.000
2/28/2002	6.80	1.98	0.29		1.44	0.35	0.00	0.000	0.000
3/31/2002	5.97	1.06	0.18		1.63	0.39	0.00	0.000	0.000
4/30/2002	5.84	1.06	0.18		1.80	0.42	0.00	0.000	0.000
5/31/2002	5.26	0.88	0.17		1.97	0.44	0.00	0.000	0.000
6/30/2002	4.63	0.74	0.16		2.10	0.47	0.00	0.000	0.000
7/31/2002	4.69	0.71	0.15		2.25	0.49	0.00	0.000	0.000
8/31/2002	4.91	0.71	0.14		2.40	0.51	0.00	0.000	0.000
9/30/2002	4.38	0.69	0.16		2.53	0.53	0.00	0.000	0.000
10/31/2002	5.62	1.03	0.18		2.71	0.56	0.00	0.000	0.000
11/30/2002	11.35	1.58	0.14		3.05	0.61	0.00	0.000	0.000
12/31/2002	11.81	1.60	0.14		3.41	0.66	0.00	0.000	0.000
1/31/2003	10.81	1.70	0.16		3.75	0.71	0.00	0.000	0.000
2/28/2003	9.59	1.55	0.16		4.02	0.76	0.00	0.000	0.000
3/31/2003	9.80	1.71	0.17		4.32	0.81	0.00	0.000	0.000
4/30/2003	9.39	1.67	0.18		4.60	0.86	0.00	0.000	0.000
5/31/2003	7.53	1.09	0.14		4.84	0.89	0.00	0.000	0.000
6/30/2003	7.47	0.90	0.12		5.06	0.92	0.00	0.000	0.000
7/31/2003	10.01	5.34	0.53		5.37	1.09	0.00	0.000	0.000
8/31/2003	15.49	22.43	1.45		5.85	1.78	0.00	0.000	0.000
9/30/2003	16.52	3.49	0.21		6.35	1.89	0.00	0.000	0.000
10/31/2003	14.75	1.32	0.09		6.80	1.93	0.00	0.000	0.000
11/30/2003	14.69	1.46	0.10		7.25	1.97	0.00	0.000	0.000
12/31/2003	14.46	1.46	0.10		7.69	2.02	0.00	0.000	0.000
1/31/2004	13.68	1.46	0.11		8.12	2.06	0.00	0.000	0.000
2/29/2004	12.66	1.44	0.11		8.49	2.10	0.00	0.000	0.000
3/31/2004	11.96	1.47	0.12		8.86	2.15	0.00	0.000	0.000
4/30/2004	11.32	1.44	0.13		9.20	2.19	0.00	0.000	0.000
5/31/2004	11.22	1.33	0.12		9.54	2.23	0.00	0.000	0.000
6/30/2004	11.09	8.40	0.76		9.88	2.48	0.00	0.000	0.000
7/31/2004	11.40	1.67	0.15		10.23	2.54	0.00	0.000	0.000
8/31/2004	10.25	1.31	0.13		10.55	2.58	0.00	0.000	0.000
9/30/2004	10.66	1.52	0.14		10.87	2.62	0.00	0.000	0.000
10/31/2004	7.87	8.52	1.08		11.11	2.89	0.00	0.000	0.000
11/30/2004	8.24	4.22	0.51		11.36	3.01	0.00	0.000	0.000
12/31/2004	9.07	3.30	0.36		11.64	3.12	0.00	0.000	0.000
1/31/2005	9.49	2.29	0.24		11.93	3.19	0.00	0.000	0.000
2/28/2005	9.28	2.38	0.26		12.19	3.25	0.00	0.000	0.000
3/31/2005	9.59	2.41	0.25		12.49	3.33	0.00	0.000	0.000
4/30/2005	8.35	2.18	0.26		12.74	3.39	0.00	0.000	0.000
5/31/2005	9.40	2.21	0.23		13.03	3.46	0.00	0.000	0.000
6/30/2005	8.21	2.30	0.28		13.28	3.53	0.00	0.000	0.000

Date	Oil Rate (CD) m3/d	Water Rate (CD) m3/d	Water Oil Ratio m3/m3	Water Inj Rate (CD) m3/d	Cum Oil Prod Km3	Cum Water Prod Km3	Cum Water Inj Km3	Voidage Replacement Ratio	Cum Voidage Replacemt Ratio
7/31/2005	8.11	1.57	0.19		13.53	3.58	0.00	0.000	0.000
8/31/2005	8.60	2.11	0.25		13.80	3.64	0.00	0.000	0.000
9/30/2005	8.24	2.68	0.32		14.04	3.72	0.00	0.000	0.000
10/31/2005	8.56	1.98	0.23		14.31	3.79	0.00	0.000	0.000
11/30/2005	8.42	1.69	0.20		14.56	3.84	0.00	0.000	0.000
12/31/2005	7.59	2.59	0.34		14.80	3.92	0.00	0.000	0.000
1/31/2006	6.92	2.11	0.31		15.01	3.98	0.00	0.000	0.000
2/28/2006	6.83	2.21	0.32		15.20	4.04	0.00	0.000	0.000
3/31/2006	6.42	2.13	0.33		15.40	4.11	0.00	0.000	0.000
4/30/2006	6.97	2.06	0.30		15.61	4.17	0.00	0.000	0.000
5/31/2006	6.44	1.70	0.26		15.81	4.23	0.00	0.000	0.000
6/30/2006	6.39	1.52	0.24		16.00	4.27	0.00	0.000	0.000
7/31/2006	6.75	2.89	0.43		16.21	4.36	0.00	0.000	0.000
8/31/2006	5.52	2.03	0.37		16.38	4.42	0.00	0.000	0.000
9/30/2006	6.45	1.16	0.18		16.58	4.46	0.00	0.000	0.000
10/31/2006	5.52	15.85	2.87		16.75	4.95	0.00	0.000	0.000
11/30/2006	5.53	16.09	2.91		16.91	5.43	0.00	0.000	0.000
12/31/2006	5.02	15.41	3.07		17.07	5.91	0.00	0.000	0.000
1/31/2007	5.37	17.52	3.26		17.23	6.45	0.00	0.000	0.000
2/28/2007	5.23	11.42	2.18		17.38	6.77	0.00	0.000	0.000
3/31/2007	5.00	14.57	2.91		17.54	7.22	0.00	0.000	0.000
4/30/2007	4.58	15.55	3.39		17.67	7.69	0.00	0.000	0.000
5/31/2007	6.26	15.78	2.52		17.87	8.18	0.00	0.000	0.000
6/30/2007	6.25	13.88	2.22		18.06	8.60	0.00	0.000	0.000
7/31/2007	6.76	11.77	1.74		18.26	8.96	0.00	0.000	0.000
8/31/2007	6.37	12.88	2.02		18.46	9.36	0.00	0.000	0.000
9/30/2007	6.16	13.64	2.21		18.65	9.77	0.00	0.000	0.000
10/31/2007	5.48	10.94	2.00		18.82	10.11	0.00	0.000	0.000
11/30/2007	5.81	13.36	2.30		18.99	10.51	0.00	0.000	0.000
12/31/2007	5.86	9.22	1.57		19.17	10.80	0.00	0.000	0.000
1/31/2008	5.65	12.28	2.17		19.35	11.18	0.00	0.000	0.000
2/29/2008	7.40	13.05	1.76		19.56	11.55	0.00	0.000	0.000
3/31/2008	7.12	13.56	1.90		19.78	11.98	0.00	0.000	0.000
4/30/2008	7.43	13.68	1.84		20.01	12.39	0.00	0.000	0.000
5/31/2008	7.25	13.26	1.83		20.23	12.80	0.00	0.000	0.000
6/30/2008	6.58	5.58	0.85		20.43	12.96	0.00	0.000	0.000
7/31/2008	6.55	1.45	0.22		20.63	13.01	0.00	0.000	0.000
8/31/2008	6.93	1.39	0.20		20.85	13.05	0.00	0.000	0.000
9/30/2008	7.07	1.76	0.25		21.06	13.10	0.00	0.000	0.000
10/31/2008	6.72	1.36	0.20		21.27	13.15	0.00	0.000	0.000
11/30/2008	6.87	1.40	0.20		21.47	13.19	0.00	0.000	0.000
12/31/2008	6.26	1.60	0.26		21.67	13.24	0.00	0.000	0.000
1/31/2009	5.81	1.58	0.27		21.85	13.29	0.00	0.000	0.000
2/28/2009	5.70	1.58	0.28		22.01	13.33	0.00	0.000	0.000
3/31/2009	5.39	1.51	0.28		22.17	13.38	0.00	0.000	0.000
4/30/2009	5.37	1.54	0.29		22.34	13.42	0.00	0.000	0.000
5/31/2009	5.21	1.60	0.31		22.50	13.47	0.00	0.000	0.000
6/30/2009	5.22	1.48	0.28		22.65	13.52	0.00	0.000	0.000

Date	Oil Rate (CD) m3/d	Water Rate (CD) m3/d	Water Oil Ratio m3/m3	Water Inj Rate (CD) m3/d	Cum Oil Prod Km3	Cum Water Prod Km3	Cum Water Inj Km3	Voidage Replacement Ratio	Cum Voidage Replacemt Ratio
7/31/2009	5.19	1.48	0.29		22.81	13.56	0.00	0.000	0.000
8/31/2009	5.11	1.51	0.29		22.97	13.61	0.00	0.000	0.000
9/30/2009	5.05	1.55	0.31		23.12	13.66	0.00	0.000	0.000
10/31/2009	5.04	1.50	0.30		23.28	13.70	0.00	0.000	0.000
11/30/2009	4.65	1.53	0.33		23.42	13.75	0.00	0.000	0.000
12/31/2009	4.37	1.39	0.32		23.56	13.79	0.00	0.000	0.000
1/31/2010	4.58	1.40	0.31		23.70	13.84	0.00	0.000	0.000
2/28/2010	4.16	1.41	0.34		23.81	13.88	0.00	0.000	0.000
3/31/2010	3.79	1.47	0.39		23.93	13.92	0.00	0.000	0.000
4/30/2010	3.54	1.36	0.38		24.04	13.96	0.00	0.000	0.000
5/31/2010	4.83	1.54	0.32		24.19	14.01	0.00	0.000	0.000
6/30/2010	4.89	1.58	0.32		24.33	14.06	0.00	0.000	0.000
7/31/2010	4.69	1.52	0.32		24.48	14.10	0.00	0.000	0.000
8/31/2010	5.00	1.53	0.31		24.63	14.15	0.00	0.000	0.000
9/30/2010	4.89	1.61	0.33		24.78	14.20	0.00	0.000	0.000
10/31/2010	4.87	9.28	1.90		24.93	14.49	0.00	0.000	0.000
11/30/2010	4.97	14.14	2.84		25.08	14.91	0.00	0.000	0.000
12/31/2010	5.23	11.91	2.28		25.24	15.28	0.00	0.000	0.000
1/31/2011	5.15	7.38	1.43		25.40	15.51	0.00	0.000	0.000
2/28/2011	4.97	7.19	1.45		25.54	15.71	0.00	0.000	0.000
3/31/2011	4.31	2.69	0.62		25.68	15.79	0.00	0.000	0.000
4/30/2011	3.39	1.37	0.40		25.78	15.84	0.00	0.000	0.000
5/31/2011	2.26	1.31	0.58		25.85	15.88	0.00	0.000	0.000
6/30/2011	2.28	1.24	0.55		25.92	15.91	0.00	0.000	0.000
7/31/2011	1.97	5.71	2.90		25.98	16.09	0.00	0.000	0.000
8/31/2011	2.90	7.61	2.62		26.07	16.33	0.00	0.000	0.000
9/30/2011	2.66	7.18	2.69		26.15	16.54	0.00	0.000	0.000
10/31/2011	3.82	15.63	4.09		26.27	17.03	0.00	0.000	0.000
11/30/2011	3.55	8.07	2.27		26.37	17.27	0.00	0.000	0.000
12/31/2011	3.36	9.05	2.70		26.48	17.55	0.00	0.000	0.000
1/31/2012	3.18	7.45	2.34		26.57	17.78	0.00	0.000	0.000
2/29/2012	3.30	9.13	2.77		26.67	18.05	0.00	0.000	0.000
3/31/2012	3.33	9.16	2.75		26.77	18.33	0.00	0.000	0.000
4/30/2012	3.38	9.13	2.70		26.88	18.60	0.00	0.000	0.000
5/31/2012	3.73	8.56	2.29		26.99	18.87	0.00	0.000	0.000
6/30/2012	3.56	8.65	2.43		27.10	19.13	0.00	0.000	0.000
7/31/2012	3.59	8.50	2.37		27.21	19.39	0.00	0.000	0.000
8/31/2012	2.67	10.13	3.79		27.29	19.71	0.00	0.000	0.000
9/30/2012	2.70	8.64	3.20		27.37	19.96	0.00	0.000	0.000
10/31/2012	3.60	10.22	2.84		27.48	20.28	0.00	0.000	0.000
11/30/2012	4.01	10.28	2.56		27.61	20.59	0.00	0.000	0.000
12/31/2012	3.75	7.71	2.06		27.72	20.83	0.00	0.000	0.000
1/31/2013	4.53	8.89	1.96		27.86	21.10	0.00	0.000	0.000
2/28/2013	4.21	9.21	2.19		27.98	21.36	0.00	0.000	0.000
3/31/2013	3.20	8.15	2.55		28.08	21.61	0.00	0.000	0.000
4/30/2013	3.31	8.06	2.43		28.18	21.86	0.00	0.000	0.000
5/31/2013	3.86	8.63	2.23		28.30	22.12	0.00	0.000	0.000
6/30/2013	3.33	15.53	4.66		28.40	22.59	0.00	0.000	0.000

Date	Oil Rate (CD) m3/d	Water Rate (CD) m3/d	Water Oil Ratio m3/m3	Water Inj Rate (CD) m3/d	Cum Oil Prod Km3	Cum Water Prod Km3	Cum Water Inj Km3	Voidage Replacement Ratio	Cum Voidage Replacemt Ratio
7/31/2013	2.00	10.75	5.38		28.46	22.92	0.00	0.000	0.000
8/31/2013	2.34	15.85	6.79		28.53	23.41	0.00	0.000	0.000
9/30/2013	2.32	15.88	6.84		28.60	23.89	0.00	0.000	0.000
10/31/2013	2.85	17.07	5.99		28.69	24.42	0.00	0.000	0.000
11/30/2013	3.62	17.01	4.70		28.80	24.93	0.00	0.000	0.000
12/31/2013	3.61	16.94	4.70		28.91	25.46	0.00	0.000	0.000
1/31/2014	3.69	16.22	4.40		29.02	25.96	0.00	0.000	0.000
2/28/2014	1.93	2.29	1.19		29.08	26.02	0.00	0.000	0.000
3/31/2014	1.35	9.30	6.90		29.12	26.31	0.00	0.000	0.000
4/30/2014	3.84	29.19	7.61		29.24	27.19	0.00	0.000	0.000
5/31/2014	3.90	24.87	6.38		29.36	27.96	0.00	0.000	0.000
6/30/2014	4.02	23.26	5.79		29.48	28.66	0.00	0.000	0.000
7/31/2014	4.57	25.19	5.51		29.62	29.44	0.00	0.000	0.000
8/31/2014	5.51	27.09	4.92		29.79	30.28	0.00	0.000	0.000
9/30/2014	5.52	27.28	4.94		29.96	31.09	0.00	0.000	0.000
10/31/2014	8.26	23.49	2.84		30.21	31.82	0.00	0.000	0.000
11/30/2014	8.45	20.60	2.44		30.47	32.44	0.00	0.000	0.000
12/31/2014	7.96	22.34	2.81		30.71	33.13	0.00	0.000	0.000



TUNDRA OIL & GAS PARTNERSHIP

DALY UNIT No. 7 HZNTL 8A-22-9-29
102/08-22-009-29W1/0
LICENSE #: 9749
BAKKEN FORMATION

RESERVOIR PRESSURE SURVEY DATA
FEBRUARY 18th - MARCH 11th, 2014

Prepared by: **DOLLCO Well Data Services**
e-mail: dollco@shaw.ca

PO Box 326
417A Mississippian Drive
Estevan, SK
S4A 2A4

Cell: (306) 421 - 7330
Fax: (306) 634 - 7976
Res: (306) 634 - 8761

E-mail: qualityw@sasktel.net

Pressure Survey Report

Company Information

Company Name	TUNDRA OIL & GAS PARTNERSHIP
Contact	CRAIG LANE
e-mail	craig.lane@tundraoilandgas.com
Phone	(204) 748-4409
Site Contact	SCOTT MURRAY
Site Phone	(306) 482-7216

Well Information

Well Name	DALY UNIT No. 7 HZNTL 8A-22-9-29
Unique Well ID	102/08-22-009-29W1/00
Surface Location	8A-21 / 8A-22-9-29W1
Well License Number	9749
Well Type	Horizontal
Well Fluid Type	01 Oil
Field	DALY

KB Elevation (SL)	539.96 m
CF Elevation (SL)	535.55 m
GL Elevation (SL)	536.22 m
Distance from KB to CF (Log)	4.41 m
KB-GL Offset	3.74 m

Tubing ID	mm
Tubing OD	mm
Tubing Depth(Log KB)	m
Tubing Depth(TVD KB)	m
Casing ID	mm
Casing OD	177.8 mm
Casing Depth(Log KB)	1038.52000 m
Casing Depth(TVD KB)	921.33000 m
PBTD(Log KB)	m
PBTD(TVD KB)	m



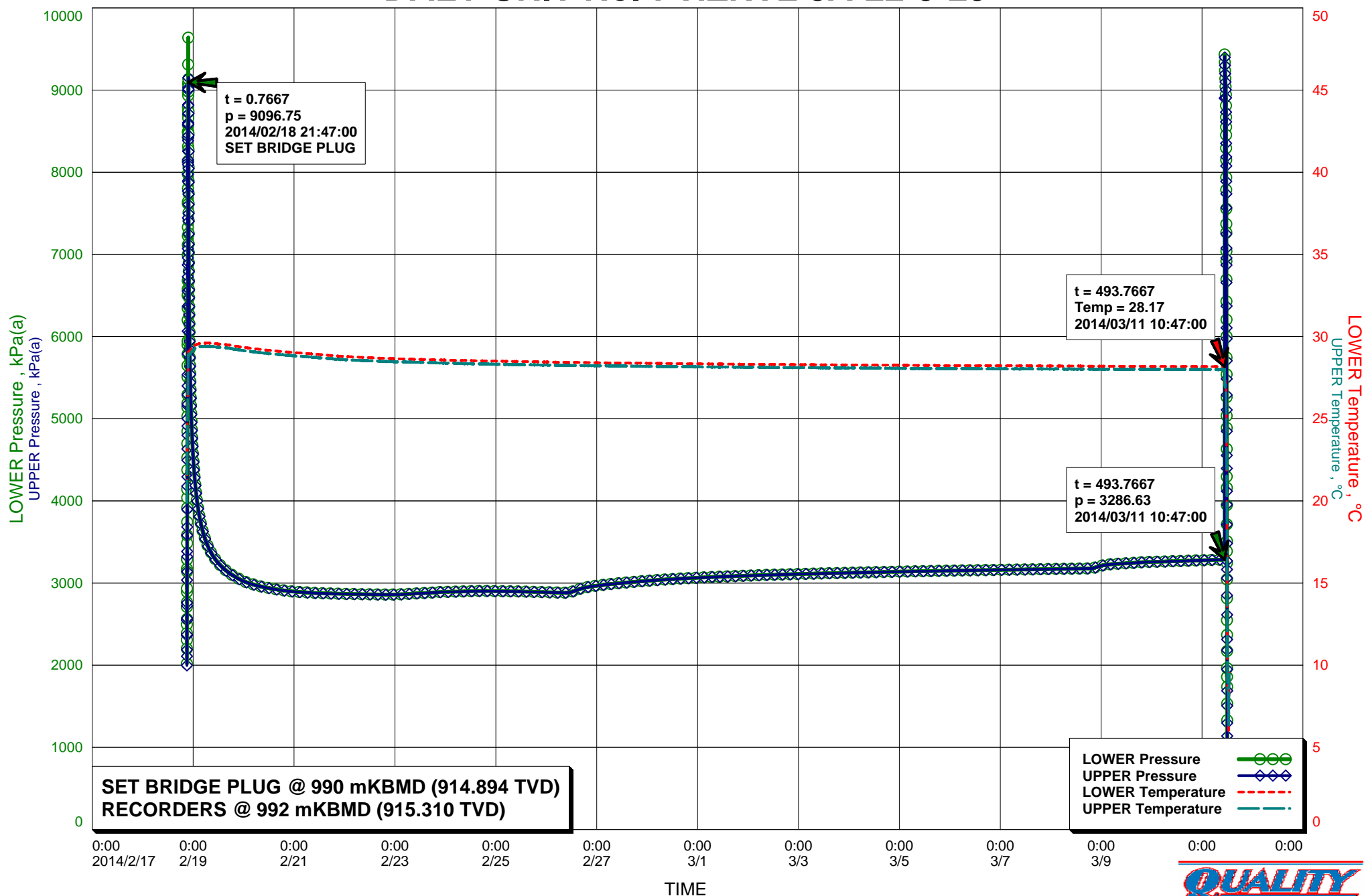
Pressure Survey Report

Test Information

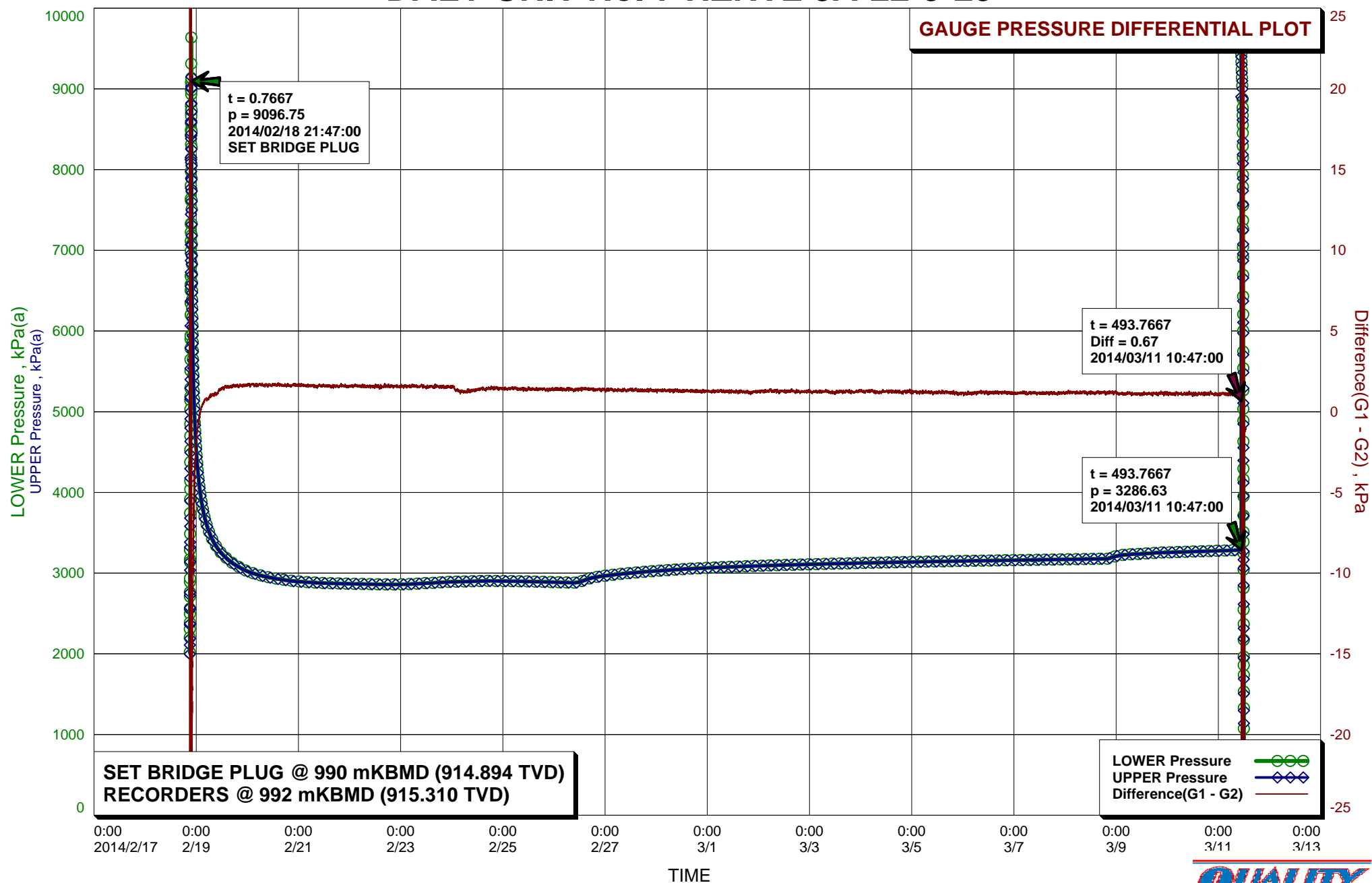
Well Name	DALY UNIT No. 7 HZNTL 8A-22-9-29
Unique Well ID	102/08-22-009-29W1/00
Surface Location	8A-21 / 8A-22-9-29W1
Well License Number	9749
Well Fluid Type	01 Oil
Test Purpose	Initial Test
Test Type	RESERVOIR PRESSURE SURVEY
Formation	BAKKEN
Well Type	Horizontal
Test/Prod. Interval Top KB (Log)	1038.52 m
Test/Prod. Interval Base KB (Log)	2448.00 m
MPP(Log KB)	1743.26 m
Test/Prod Interval Top KB (TVD)	921.33 m
Test/Prod. Interval Base m KB (TVD)	918.06 m
MPP(TVD KB)	919.69 m
Date/Time Gauge on Bottom	2014/02/18 21:43:30
Date/Time Gauge Off Bottom	2014/03/11 11:23:30
Time/Date Well Shut-In	2014/02/18 21:47:00
Tubing Pressure Initial	kPa(a)
Casing Pressure Initial	kPa(a)
Tubing Pressure: Final	kPa(a)
Casing Pressure: Final	kPa(a)
Last Measured Pressure at Run Depth	3286.63 kPa(a)
Reservoir Temperature	28.17 °C
Service Company	Quality Wireline Services Ltd.
Representative	IVORY HERMAN
Prepared By	DOLLCO Well Data Services
Qualified By	RICK DOLL
Report Date	2014/03/26



DALY UNIT No. 7 HZNTL 8A-22-9-29



DALY UNIT No. 7 HZNTL 8A-22-9-29



Recorder Information

Company Name	TUNDRA OIL & GAS PARTNERSHIP
Unique Well ID	102/08-22-009-29W1/00
Well Name	DALY UNIT No. 7 HZNTL 8A-22-9-29
Formation	BAKKEN
Start Test Date	2014/02/18
Final Test Date	2014/03/11

Gauge 1

Gauge Name	LOWER	Gauge Type	ELECTRONIC
Gauge Serial Number	VPQ	Gauge Manufacturer	REAL TIME MEASUREMENTS
Run Depth (Log KB)	992.00 m	Gauge Model	KC3 STRAIN
Date of Last Calibration	2013/11/12	Maximum Recorder Range	20680.00 kPa
Gauge Start Date	2014/02/18	Gauge Start Time	21:01:00
Gauge Stop Date	2014/03/11	Gauge Stop Time	13:00:00
Date Gauge On Bottom	2014/02/18	Time Gauge On Bottom	21:43:30
Date Gauge Off Bottom	2014/03/11	Time Gauge Off Bottom	11:23:30

Gauge 2

Gauge Name	UPPER	Gauge Type	ELECTRONIC
Gauge Serial Number	VPR	Gauge Manufacturer	REAL TIME MEASUREMENTS
Run Depth (Log KB)	992.00 m	Gauge Model	KC3 STRAIN
Date of Last Calibration	2013/11/12	Maximum Recorder Range	20680.00 kPa
Gauge Start Date	2014/02/18	Gauge Start Time	21:01:00
Gauge Stop Date	2014/03/11	Gauge Stop Time	13:00:00
Date Gauge On Bottom	2014/02/18	Time Gauge On Bottom	21:43:30
Date Gauge Off Bottom	2014/03/11	Time Gauge Off Bottom	11:23:30

RESERVOIR PRESSURE SURVEY

	LOWER Date yyyy/mm/dd	LOWER Clk Time hh:mm:ss	LOWER Time hr	LOWER Pres. kPa(a)	LOWER Temp. °C	UPPER Time hr	UPPER Pres. kPa(a)	UPPER Temp. °C	Diff. G1 - G2 kPa
1	2014/02/18	21:01:00	0.0000	2018.21	20.25	0.0000	2108.26	19.90	-90.05
2	2014/02/18	21:01:00	0.0000	RIH, ACTIVATE RECORDERS S/N: VPQ(L) & VPR(U)					
3	2014/02/18	21:01:30	0.0084	2307.06	20.30	0.0084	1997.49	19.93	309.57
4	2014/02/18	21:43:30	0.7084	9133.75	29.00	0.7084	9142.19	28.76	-8.44
5	2014/02/18	21:43:30	0.7084	RECORDERS ON BOTTOM @ 992 mKBMD (915.31 TVD)					
6	2014/02/18	21:44:00	0.7167	9145.03	29.01	0.7167	9090.99	28.79	54.04
7	2014/02/18	21:47:00	0.7667	9096.75	29.07	0.7667	9119.96	28.86	-23.22
8	2014/02/18	21:47:00	0.7667	SET BRIDGE PLUG @ 990 mKBMD (914.894 TVD)					
9	2014/02/18	21:47:30	0.7750	8981.01	29.07	0.7750	9098.63	28.85	-117.61
10	2014/02/18	23:01:30	2.0084	5104.69	29.23	2.0084	5109.73	29.03	-5.03
11	2014/02/19	01:01:30	4.0084	4190.63	29.48	4.0084	4191.26	29.28	-0.62
12	2014/02/19	03:01:30	6.0084	3805.26	29.57	6.0084	3804.78	29.37	0.48
13	2014/02/19	05:01:30	8.0084	3590.05	29.60	8.0167	3588.64	29.40	0.67
14	2014/02/19	07:01:30	10.0084	3447.89	29.60	10.0167	3446.43	29.40	0.98
15	2014/02/19	09:01:30	12.0084	3348.82	29.59	12.0167	3347.38	29.39	1.11
16	2014/02/19	11:01:30	14.0084	3272.75	29.56	14.0167	3271.12	29.37	1.33
17	2014/02/19	13:01:30	16.0084	3214.40	29.54	16.0167	3212.83	29.34	1.34
18	2014/02/19	15:01:30	18.0084	3165.86	29.52	18.0167	3164.15	29.33	1.52
19	2014/02/19	17:01:30	20.0084	3125.48	29.49	20.0167	3123.79	29.29	1.56
20	2014/02/19	19:01:30	22.0084	3091.80	29.45	22.0167	3090.03	29.26	1.67
21	2014/02/19	21:01:30	24.0084	3061.69	29.40	24.0167	3059.97	29.20	1.59
22	2014/02/19	23:01:30	26.0084	3034.89	29.36	26.0167	3033.18	29.16	1.61
23	2014/02/20	01:01:30	28.0084	3012.45	29.33	28.0167	3010.70	29.13	1.66
24	2014/02/20	03:01:30	30.0084	2995.42	29.29	30.0167	2993.71	29.09	1.65
25	2014/02/20	05:01:30	32.0084	2979.48	29.26	32.0167	2977.79	29.06	1.62
26	2014/02/20	07:01:30	34.0084	2966.26	29.23	34.0167	2964.57	29.03	1.63
27	2014/02/20	09:01:30	36.0084	2954.20	29.21	36.0167	2952.50	29.01	1.67
28	2014/02/20	11:01:30	38.0084	2943.64	29.18	38.0167	2941.99	28.98	1.61
29	2014/02/20	13:01:30	40.0084	2933.81	29.15	40.0167	2932.12	28.95	1.65
30	2014/02/20	15:01:30	42.0084	2925.04	29.12	42.0167	2923.38	28.93	1.62
31	2014/02/20	17:01:30	44.0084	2916.74	29.10	44.0167	2915.12	28.90	1.59
32	2014/02/20	19:01:30	46.0084	2910.27	29.08	46.0167	2908.56	28.88	1.69
33	2014/02/20	21:01:30	48.0084	2903.64	29.06	48.0167	2902.01	28.86	1.61
34	2014/02/20	23:01:30	50.0084	2897.82	29.04	50.0167	2896.18	28.84	1.64
35	2014/02/21	01:01:30	52.0084	2893.98	29.02	52.0167	2892.34	28.82	1.60
36	2014/02/21	03:01:30	54.0084	2889.57	29.00	54.0167	2887.97	28.80	1.58
37	2014/02/21	05:01:30	56.0084	2887.17	28.98	56.0167	2885.57	28.78	1.59
38	2014/02/21	07:01:30	58.0084	2883.41	28.96	58.0167	2881.75	28.77	1.65
39	2014/02/21	09:01:30	60.0084	2880.19	28.94	60.0167	2878.59	28.75	1.60
40	2014/02/21	11:01:30	62.0084	2877.92	28.92	62.0167	2876.32	28.72	1.61

LOWER Serial Number: VPQ Start Date: 2014/02/18 21:01:00 Run Depth: 992.00

UPPER Serial Number: VPR Start Date: 2014/02/18 21:01:00 Run Depth: 992.00

Print Filter: Print every 2 hour

RESERVOIR PRESSURE SURVEY

	LOWER Date yyyy/mm/dd	LOWER Clk Time hh:mm:ss	LOWER Time hr	LOWER Pres. kPa(a)	LOWER Temp. °C	UPPER Time hr	UPPER Pres. kPa(a)	UPPER Temp. °C	Diff. G1 - G2 kPa
41	2014/02/21	13:02:00	64.0167	2875.95	28.90	64.0250	2874.31	28.70	1.62
42	2014/02/21	15:02:00	66.0167	2874.48	28.88	66.0250	2872.85	28.68	1.61
43	2014/02/21	17:02:00	68.0167	2872.86	28.85	68.0250	2871.20	28.66	1.66
44	2014/02/21	19:02:00	70.0167	2871.28	28.83	70.0250	2869.74	28.64	1.54
45	2014/02/21	21:02:00	72.0167	2870.18	28.81	72.0250	2868.56	28.62	1.62
46	2014/02/21	23:02:00	74.0167	2868.65	28.80	74.0250	2867.08	28.61	1.58
47	2014/02/22	01:02:00	76.0167	2867.32	28.78	76.0250	2865.71	28.59	1.61
48	2014/02/22	03:02:00	78.0167	2866.33	28.77	78.0250	2864.69	28.58	1.65
49	2014/02/22	05:02:00	80.0167	2865.67	28.76	80.0250	2864.08	28.57	1.58
50	2014/02/22	07:02:00	82.0167	2864.76	28.74	82.0250	2863.16	28.55	1.61
51	2014/02/22	09:02:00	84.0167	2863.63	28.73	84.0250	2862.07	28.56	1.56
52	2014/02/22	11:02:00	86.0167	2862.78	28.72	86.0250	2861.24	28.53	1.54
53	2014/02/22	13:02:00	88.0167	2861.90	28.71	88.0250	2860.32	28.52	1.59
54	2014/02/22	15:02:00	90.0167	2860.82	28.70	90.0250	2859.21	28.51	1.62
55	2014/02/22	17:02:00	92.0167	2860.13	28.69	92.0250	2858.62	28.49	1.51
56	2014/02/22	19:02:00	94.0167	2859.38	28.68	94.0250	2857.85	28.48	1.54
57	2014/02/22	21:02:00	96.0167	2859.45	28.67	96.0250	2857.87	28.48	1.59
58	2014/02/22	23:02:00	98.0167	2860.06	28.66	98.0250	2858.52	28.47	1.53
59	2014/02/23	01:02:00	100.0167	2861.24	28.64	100.0250	2859.65	28.46	1.59
60	2014/02/23	03:02:00	102.0167	2863.00	28.64	102.0250	2861.44	28.46	1.57
61	2014/02/23	05:02:00	104.0167	2865.13	28.63	104.0250	2863.51	28.45	1.63
62	2014/02/23	07:02:00	106.0167	2868.23	28.62	106.0250	2866.67	28.45	1.58
63	2014/02/23	09:02:00	108.0167	2871.48	28.62	108.0250	2869.94	28.44	1.56
64	2014/02/23	11:02:00	110.0167	2874.81	28.61	110.0250	2873.27	28.43	1.56
65	2014/02/23	13:02:00	112.0167	2876.68	28.61	112.0250	2875.16	28.43	1.54
66	2014/02/23	15:02:00	114.0167	2879.16	28.60	114.0250	2877.66	28.42	1.51
67	2014/02/23	17:02:00	116.0167	2882.76	28.60	116.0250	2881.17	28.41	1.62
68	2014/02/23	19:02:00	118.0167	2886.16	28.59	118.0250	2884.59	28.41	1.56
69	2014/02/23	21:02:00	120.0167	2888.98	28.58	120.0250	2887.49	28.40	1.49
70	2014/02/23	23:02:00	122.0167	2891.48	28.57	122.0250	2889.99	28.39	1.51
71	2014/02/24	01:02:00	124.0167	2893.07	28.57	124.0250	2891.55	28.38	1.53
72	2014/02/24	03:02:00	126.0167	2894.03	28.55	126.0250	2892.74	28.38	1.28
73	2014/02/24	05:02:00	128.0167	2894.80	28.55	128.0250	2893.55	28.37	1.25
74	2014/02/24	07:02:00	130.0167	2896.28	28.54	130.0250	2895.08	28.36	1.21
75	2014/02/24	09:02:00	132.0167	2897.99	28.55	132.0250	2896.70	28.35	1.29
76	2014/02/24	11:02:00	134.0167	2900.07	28.54	134.0250	2898.73	28.35	1.33
77	2014/02/24	13:02:00	136.0167	2901.51	28.53	136.0250	2900.19	28.34	1.32
78	2014/02/24	15:02:00	138.0167	2902.56	28.53	138.0250	2901.12	28.34	1.43
79	2014/02/24	17:02:00	140.0167	2903.54	28.53	140.0250	2902.10	28.33	1.45
80	2014/02/24	19:02:00	142.0167	2903.69	28.52	142.0250	2902.24	28.33	1.45

LOWER Serial Number: VPQ Start Date: 2014/02/18 21:01:00 Run Depth: 992.00

UPPER Serial Number: VPR Start Date: 2014/02/18 21:01:00 Run Depth: 992.00

Print Filter: Print every 2 hour

RESERVOIR PRESSURE SURVEY

	LOWER Date yyyy/mm/dd	LOWER Clk Time hh:mm:ss	LOWER Time hr	LOWER Pres. kPa(a)	LOWER Temp. °C	UPPER Time hr	UPPER Pres. kPa(a)	UPPER Temp. °C	Diff. G1 - G2 kPa
81	2014/02/24	21:02:00	144.0167	2902.74	28.52	144.0250	2901.25	28.33	1.50
82	2014/02/24	23:02:00	146.0167	2901.77	28.51	146.0250	2900.31	28.32	1.48
83	2014/02/25	01:02:00	148.0167	2901.16	28.51	148.0250	2899.69	28.32	1.48
84	2014/02/25	03:02:00	150.0167	2900.58	28.50	150.0250	2899.16	28.31	1.41
85	2014/02/25	05:02:00	152.0167	2899.96	28.49	152.0250	2898.49	28.31	1.47
86	2014/02/25	07:02:00	154.0167	2899.41	28.49	154.0250	2897.99	28.30	1.42
87	2014/02/25	09:02:00	156.0167	2898.30	28.49	156.0250	2896.90	28.30	1.40
88	2014/02/25	11:02:00	158.0167	2897.31	28.48	158.0250	2896.01	28.29	1.30
89	2014/02/25	13:02:00	160.0167	2895.73	28.47	160.0250	2894.39	28.29	1.34
90	2014/02/25	15:02:00	162.0167	2894.49	28.47	162.0250	2893.10	28.28	1.37
91	2014/02/25	17:02:00	164.0167	2893.03	28.47	164.0250	2891.56	28.28	1.45
92	2014/02/25	19:02:00	166.0167	2891.47	28.46	166.0250	2890.03	28.28	1.43
93	2014/02/25	21:02:00	168.0167	2890.27	28.46	168.0250	2888.97	28.27	1.30
94	2014/02/25	23:02:00	170.0167	2888.68	28.45	170.0250	2887.34	28.27	1.33
95	2014/02/26	01:02:00	172.0167	2887.51	28.45	172.0250	2886.13	28.27	1.38
96	2014/02/26	03:02:00	174.0167	2885.91	28.45	174.0250	2884.56	28.26	1.33
97	2014/02/26	05:02:00	176.0167	2884.35	28.44	176.0250	2882.98	28.25	1.36
98	2014/02/26	07:02:00	178.0167	2882.88	28.44	178.0250	2881.51	28.25	1.37
99	2014/02/26	09:02:00	180.0167	2881.65	28.43	180.0250	2880.31	28.25	1.33
100	2014/02/26	11:02:00	182.0167	2885.80	28.42	182.0250	2884.39	28.24	1.45
101	2014/02/26	13:02:00	184.0167	2900.30	28.42	184.0250	2899.08	28.24	1.29
102	2014/02/26	15:02:00	186.0167	2919.21	28.42	186.0250	2917.89	28.24	1.40
103	2014/02/26	17:02:00	188.0167	2936.42	28.42	188.0250	2935.11	28.24	1.38
104	2014/02/26	19:02:00	190.0167	2947.65	28.42	190.0250	2946.29	28.23	1.39
105	2014/02/26	21:02:00	192.0167	2956.47	28.41	192.0250	2955.12	28.23	1.40
106	2014/02/26	23:02:00	194.0167	2964.15	28.41	194.0250	2962.75	28.22	1.43
107	2014/02/27	01:02:00	196.0167	2970.90	28.41	196.0250	2969.64	28.22	1.31
108	2014/02/27	03:02:00	198.0167	2977.38	28.41	198.0250	2976.00	28.22	1.41
109	2014/02/27	05:02:00	200.0167	2983.55	28.40	200.0250	2982.24	28.21	1.34
110	2014/02/27	07:02:00	202.0167	2988.61	28.39	202.0250	2987.26	28.21	1.38
111	2014/02/27	09:02:00	204.0167	2993.78	28.39	204.0250	2992.39	28.21	1.43
112	2014/02/27	11:02:00	206.0167	2998.91	28.39	206.0250	2997.63	28.21	1.28
113	2014/02/27	13:02:00	208.0167	3003.52	28.39	208.0250	3002.23	28.21	1.32
114	2014/02/27	15:02:00	210.0167	3008.26	28.39	210.0250	3007.00	28.21	1.29
115	2014/02/27	17:02:00	212.0167	3012.79	28.38	212.0250	3011.50	28.20	1.32
116	2014/02/27	19:02:00	214.0167	3017.02	28.38	214.0250	3015.70	28.20	1.32
117	2014/02/27	21:02:00	216.0167	3021.00	28.38	216.0250	3019.71	28.19	1.30
118	2014/02/27	23:02:00	218.0167	3024.81	28.38	218.0250	3023.57	28.19	1.25
119	2014/02/28	01:02:00	220.0167	3028.81	28.37	220.0250	3027.52	28.19	1.33
120	2014/02/28	03:02:00	222.0167	3032.72	28.37	222.0250	3031.37	28.19	1.35

LOWER Serial Number: VPQ Start Date: 2014/02/18 21:01:00 Run Depth: 992.00

UPPER Serial Number: VPR Start Date: 2014/02/18 21:01:00 Run Depth: 992.00

Print Filter: Print every 2 hour

RESERVOIR PRESSURE SURVEY

	LOWER Date yyyy/mm/dd	LOWER Clk Time hh:mm:ss	LOWER Time hr	LOWER Pres. kPa(a)	LOWER Temp. °C	UPPER Time hr	UPPER Pres. kPa(a)	UPPER Temp. °C	Diff. G1 - G2 kPa
121	2014/02/28	05:02:00	224.0167	3036.55	28.37	224.0250	3035.26	28.18	1.31
122	2014/02/28	07:02:00	226.0167	3040.15	28.37	226.0250	3038.90	28.18	1.27
123	2014/02/28	09:02:00	228.0167	3043.54	28.36	228.0250	3042.20	28.18	1.35
124	2014/02/28	11:02:00	230.0167	3046.82	28.36	230.0250	3045.52	28.17	1.32
125	2014/02/28	13:02:00	232.0167	3049.84	28.36	232.0250	3048.58	28.17	1.28
126	2014/02/28	15:02:00	234.0167	3052.83	28.35	234.0250	3051.54	28.17	1.30
127	2014/02/28	17:02:00	236.0167	3055.70	28.35	236.0250	3054.44	28.17	1.27
128	2014/02/28	19:02:00	238.0167	3058.47	28.35	238.0250	3057.25	28.17	1.23
129	2014/02/28	21:02:00	240.0167	3061.02	28.35	240.0250	3059.76	28.16	1.27
130	2014/02/28	23:02:00	242.0167	3063.59	28.34	242.0250	3062.28	28.16	1.31
131	2014/03/01	01:02:00	244.0167	3066.04	28.34	244.0250	3064.79	28.16	1.27
132	2014/03/01	03:02:00	246.0167	3068.54	28.34	246.0250	3067.28	28.16	1.26
133	2014/03/01	05:02:00	248.0167	3070.92	28.34	248.0250	3069.65	28.15	1.29
134	2014/03/01	07:02:00	250.0167	3073.29	28.33	250.0250	3071.98	28.15	1.31
135	2014/03/01	09:02:00	252.0167	3075.36	28.33	252.0250	3074.11	28.15	1.25
136	2014/03/01	11:02:00	254.0167	3077.49	28.33	254.0250	3076.32	28.15	1.20
137	2014/03/01	13:02:30	256.0250	3079.39	28.33	256.0334	3078.25	28.15	1.16
138	2014/03/01	15:02:30	258.0250	3081.50	28.33	258.0334	3080.22	28.15	1.29
139	2014/03/01	17:02:30	260.0250	3083.63	28.32	260.0334	3082.38	28.14	1.25
140	2014/03/01	19:02:30	262.0250	3085.55	28.32	262.0334	3084.33	28.14	1.23
141	2014/03/01	21:02:30	264.0250	3087.44	28.31	264.0334	3086.30	28.14	1.15
142	2014/03/01	23:02:30	266.0250	3089.21	28.31	266.0334	3088.02	28.14	1.19
143	2014/03/02	01:02:30	268.0250	3091.06	28.32	268.0334	3089.80	28.13	1.27
144	2014/03/02	03:02:30	270.0250	3093.03	28.31	270.0334	3091.75	28.13	1.28
145	2014/03/02	05:02:30	272.0250	3094.90	28.31	272.0334	3093.63	28.13	1.29
146	2014/03/02	07:02:30	274.0250	3096.83	28.31	274.0334	3095.52	28.13	1.32
147	2014/03/02	09:02:30	276.0250	3098.52	28.31	276.0334	3097.29	28.13	1.24
148	2014/03/02	11:02:30	278.0250	3099.97	28.30	278.0334	3098.73	28.12	1.24
149	2014/03/02	13:02:30	280.0250	3101.38	28.30	280.0334	3100.09	28.12	1.28
150	2014/03/02	15:02:30	282.0250	3102.87	28.31	282.0334	3101.62	28.12	1.26
151	2014/03/02	17:02:30	284.0250	3104.34	28.30	284.0334	3103.12	28.12	1.23
152	2014/03/02	19:02:30	286.0250	3105.89	28.30	286.0334	3104.67	28.12	1.24
153	2014/03/02	21:02:30	288.0250	3107.23	28.30	288.0334	3105.98	28.12	1.25
154	2014/03/02	23:02:30	290.0250	3108.62	28.29	290.0334	3107.34	28.11	1.28
155	2014/03/03	01:02:30	292.0250	3109.86	28.29	292.0334	3108.67	28.11	1.18
156	2014/03/03	03:02:30	294.0250	3111.32	28.29	294.0334	3110.02	28.11	1.30
157	2014/03/03	05:02:30	296.0250	3112.83	28.29	296.0334	3111.54	28.11	1.31
158	2014/03/03	07:02:30	298.0250	3114.25	28.28	298.0334	3112.99	28.11	1.25
159	2014/03/03	09:02:30	300.0250	3115.67	28.28	300.0334	3114.39	28.10	1.29
160	2014/03/03	11:02:30	302.0250	3116.93	28.28	302.0334	3115.71	28.10	1.24

LOWER Serial Number: VPQ Start Date: 2014/02/18 21:01:00 Run Depth: 992.00

UPPER Serial Number: VPR Start Date: 2014/02/18 21:01:00 Run Depth: 992.00

Print Filter: Print every 2 hour

RESERVOIR PRESSURE SURVEY

	LOWER Date yyyy/mm/dd	LOWER Clk Time hh:mm:ss	LOWER Time hr	LOWER Pres. kPa(a)	LOWER Temp. °C	UPPER Time hr	UPPER Pres. kPa(a)	UPPER Temp. °C	Diff. G1 - G2 kPa
161	2014/03/03	13:02:30	304.0250	3118.04	28.28	304.0334	3116.86	28.09	1.18
162	2014/03/03	15:02:30	306.0250	3119.26	28.28	306.0334	3118.03	28.09	1.23
163	2014/03/03	17:02:30	308.0250	3120.45	28.27	308.0334	3119.25	28.09	1.21
164	2014/03/03	19:02:30	310.0250	3121.76	28.28	310.0334	3120.51	28.10	1.22
165	2014/03/03	21:02:30	312.0250	3123.14	28.28	312.0334	3121.95	28.09	1.19
166	2014/03/03	23:02:30	314.0250	3124.52	28.28	314.0334	3123.22	28.09	1.31
167	2014/03/04	01:02:30	316.0250	3125.60	28.27	316.0334	3124.37	28.09	1.24
168	2014/03/04	03:02:30	318.0250	3126.79	28.27	318.0334	3125.50	28.09	1.30
169	2014/03/04	05:02:30	320.0250	3128.03	28.27	320.0334	3126.78	28.09	1.27
170	2014/03/04	07:02:30	322.0250	3129.30	28.27	322.0334	3128.04	28.08	1.25
171	2014/03/04	09:02:30	324.0250	3130.35	28.26	324.0334	3129.11	28.09	1.26
172	2014/03/04	11:02:30	326.0250	3131.32	28.27	326.0334	3130.06	28.07	1.26
173	2014/03/04	13:02:30	328.0250	3132.30	28.26	328.0334	3131.15	28.08	1.17
174	2014/03/04	15:02:30	330.0250	3133.51	28.26	330.0334	3132.23	28.07	1.28
175	2014/03/04	17:02:30	332.0250	3134.70	28.26	332.0334	3133.47	28.07	1.22
176	2014/03/04	19:02:30	334.0250	3135.87	28.26	334.0334	3134.68	28.07	1.19
177	2014/03/04	21:02:30	336.0250	3137.08	28.26	336.0334	3135.79	28.06	1.29
178	2014/03/04	23:02:30	338.0250	3138.18	28.26	338.0334	3136.83	28.06	1.36
179	2014/03/05	01:02:30	340.0250	3139.18	28.26	340.0334	3137.92	28.06	1.26
180	2014/03/05	03:02:30	342.0250	3140.26	28.25	342.0334	3139.05	28.06	1.21
181	2014/03/05	05:02:30	344.0250	3141.50	28.25	344.0334	3140.22	28.06	1.28
182	2014/03/05	07:02:30	346.0250	3142.46	28.25	346.0334	3141.25	28.06	1.22
183	2014/03/05	09:02:30	348.0250	3143.49	28.24	348.0334	3142.31	28.06	1.18
184	2014/03/05	11:02:30	350.0250	3144.41	28.25	350.0334	3143.18	28.06	1.24
185	2014/03/05	13:02:30	352.0250	3145.21	28.25	352.0334	3143.98	28.05	1.23
186	2014/03/05	15:02:30	354.0250	3146.11	28.24	354.0334	3144.90	28.06	1.23
187	2014/03/05	17:02:30	356.0250	3147.09	28.24	356.0334	3145.87	28.05	1.20
188	2014/03/05	19:02:30	358.0250	3148.06	28.24	358.0334	3146.86	28.05	1.20
189	2014/03/05	21:02:30	360.0250	3148.95	28.23	360.0334	3147.81	28.05	1.14
190	2014/03/05	23:02:30	362.0250	3149.93	28.23	362.0334	3148.78	28.05	1.16
191	2014/03/06	01:02:30	364.0250	3150.79	28.22	364.0334	3149.71	28.05	1.08
192	2014/03/06	03:02:30	366.0250	3151.61	28.23	366.0334	3150.43	28.04	1.17
193	2014/03/06	05:02:30	368.0250	3152.46	28.23	368.0334	3151.34	28.05	1.12
194	2014/03/06	07:02:30	370.0250	3153.29	28.23	370.0334	3152.10	28.05	1.20
195	2014/03/06	09:02:30	372.0250	3154.08	28.23	372.0334	3152.88	28.05	1.20
196	2014/03/06	11:02:30	374.0250	3154.91	28.23	374.0334	3153.71	28.04	1.21
197	2014/03/06	13:02:30	376.0250	3155.68	28.23	376.0334	3154.50	28.04	1.18
198	2014/03/06	15:02:30	378.0250	3156.49	28.23	378.0334	3155.36	28.04	1.16
199	2014/03/06	17:02:30	380.0250	3157.39	28.23	380.0334	3156.18	28.04	1.22
200	2014/03/06	19:02:30	382.0250	3158.27	28.23	382.0334	3157.04	28.03	1.24

LOWER Serial Number: VPQ Start Date: 2014/02/18 21:01:00 Run Depth: 992.00

UPPER Serial Number: VPR Start Date: 2014/02/18 21:01:00 Run Depth: 992.00

Print Filter: Print every 2 hour

RESERVOIR PRESSURE SURVEY

	LOWER Date yyyy/mm/dd	LOWER Clk Time hh:mm:ss	LOWER Time hr	LOWER Pres. kPa(a)	LOWER Temp. °C	UPPER Time hr	UPPER Pres. kPa(a)	UPPER Temp. °C	Diff. G1 - G2 kPa
201	2014/03/06	21:02:30	384.0250	3159.10	28.23	384.0334	3158.00	28.04	1.10
202	2014/03/06	23:02:30	386.0250	3160.03	28.23	386.0334	3158.86	28.04	1.18
203	2014/03/07	01:02:30	388.0250	3160.92	28.22	388.0334	3159.80	28.04	1.12
204	2014/03/07	03:02:30	390.0250	3161.80	28.22	390.0334	3160.63	28.04	1.18
205	2014/03/07	05:02:30	392.0250	3162.56	28.23	392.0334	3161.41	28.04	1.16
206	2014/03/07	07:02:30	394.0250	3163.23	28.22	394.0334	3162.08	28.04	1.16
207	2014/03/07	09:02:30	396.0250	3163.97	28.22	396.0334	3162.84	28.03	1.15
208	2014/03/07	11:02:30	398.0250	3164.81	28.22	398.0334	3163.67	28.04	1.14
209	2014/03/07	13:02:30	400.0250	3165.66	28.22	400.0334	3164.56	28.03	1.12
210	2014/03/07	15:02:30	402.0250	3166.57	28.22	402.0334	3165.47	28.04	1.09
211	2014/03/07	17:02:30	404.0250	3167.44	28.22	404.0334	3166.31	28.04	1.14
212	2014/03/07	19:02:30	406.0250	3168.27	28.22	406.0334	3167.11	28.03	1.17
213	2014/03/07	21:02:30	408.0250	3169.06	28.21	408.0334	3167.89	28.03	1.17
214	2014/03/07	23:02:30	410.0250	3169.87	28.21	410.0334	3168.69	28.03	1.19
215	2014/03/08	01:02:30	412.0250	3170.60	28.21	412.0334	3169.42	28.03	1.17
216	2014/03/08	03:02:30	414.0250	3171.38	28.21	414.0334	3170.20	28.02	1.18
217	2014/03/08	05:02:30	416.0250	3172.21	28.21	416.0334	3171.12	28.02	1.10
218	2014/03/08	07:02:30	418.0250	3173.21	28.21	418.0334	3171.92	28.02	1.28
219	2014/03/08	09:02:30	420.0250	3174.12	28.21	420.0334	3173.00	28.03	1.14
220	2014/03/08	11:02:30	422.0250	3175.06	28.21	422.0334	3173.89	28.02	1.17
221	2014/03/08	13:02:30	424.0250	3175.85	28.20	424.0334	3174.67	28.02	1.19
222	2014/03/08	15:02:30	426.0250	3176.68	28.20	426.0334	3175.51	28.02	1.17
223	2014/03/08	17:02:30	428.0250	3176.92	28.20	428.0334	3175.73	28.01	1.19
224	2014/03/08	19:02:30	430.0250	3176.35	28.20	430.0334	3175.26	28.01	1.07
225	2014/03/08	21:02:30	432.0250	3187.74	28.20	432.0334	3186.63	28.01	1.16
226	2014/03/08	23:02:30	434.0250	3203.64	28.20	434.0334	3202.49	28.01	1.21
227	2014/03/09	01:02:30	436.0250	3215.43	28.20	436.0334	3214.37	28.02	1.10
228	2014/03/09	03:02:30	438.0250	3224.37	28.19	438.0334	3223.32	28.01	1.07
229	2014/03/09	05:02:30	440.0250	3229.37	28.20	440.0334	3228.26	28.01	1.12
230	2014/03/09	07:02:30	442.0250	3233.26	28.19	442.0334	3232.20	28.01	1.09
231	2014/03/09	09:02:30	444.0250	3236.42	28.19	444.0334	3235.38	28.01	1.05
232	2014/03/09	11:02:30	446.0250	3238.45	28.19	446.0334	3237.43	28.01	1.03
233	2014/03/09	13:02:30	448.0250	3241.54	28.19	448.0334	3240.35	28.01	1.22
234	2014/03/09	15:02:30	450.0250	3244.77	28.19	450.0334	3243.66	28.00	1.12
235	2014/03/09	17:02:30	452.0250	3247.99	28.19	452.0334	3246.96	28.01	1.04
236	2014/03/09	19:02:30	454.0250	3252.08	28.19	454.0334	3251.01	28.01	1.06
237	2014/03/09	21:02:30	456.0250	3255.10	28.19	456.0334	3253.89	28.00	1.23
238	2014/03/09	23:02:30	458.0250	3256.15	28.19	458.0334	3254.98	28.01	1.17
239	2014/03/10	01:02:30	460.0250	3257.28	28.19	460.0334	3256.18	28.01	1.11
240	2014/03/10	03:02:30	462.0250	3258.95	28.19	462.0334	3257.85	28.00	1.11

LOWER Serial Number: VPQ Start Date: 2014/02/18 21:01:00 Run Depth: 992.00

UPPER Serial Number: VPR Start Date: 2014/02/18 21:01:00 Run Depth: 992.00

Print Filter: Print every 2 hour

RESERVOIR PRESSURE SURVEY

	LOWER Date yyyy/mm/dd	LOWER Clk Time hh:mm:ss	LOWER Time hr	LOWER Pres. kPa(a)	LOWER Temp. °C	UPPER Time hr	UPPER Pres. kPa(a)	UPPER Temp. °C	Diff. G1 - G2 kPa
241	2014/03/10	05:02:30	464.0250	3260.68	28.18	464.0334	3259.69	28.00	1.00
242	2014/03/10	07:02:30	466.0250	3262.50	28.18	466.0334	3261.47	28.00	1.02
243	2014/03/10	09:02:30	468.0250	3264.25	28.18	468.0334	3263.19	28.00	1.06
244	2014/03/10	11:02:30	470.0250	3265.96	28.18	470.0334	3264.87	28.00	1.11
245	2014/03/10	13:02:30	472.0250	3267.70	28.18	472.0334	3266.58	28.00	1.14
246	2014/03/10	15:02:30	474.0250	3269.34	28.18	474.0334	3268.20	27.99	1.15
247	2014/03/10	17:02:30	476.0250	3270.91	28.18	476.0334	3269.76	27.99	1.15
248	2014/03/10	19:02:30	478.0250	3272.53	28.18	478.0334	3271.46	28.00	1.08
249	2014/03/10	21:02:30	480.0250	3274.24	28.18	480.0334	3273.18	28.00	1.06
250	2014/03/10	23:02:30	482.0250	3276.04	28.18	482.0334	3274.94	28.00	1.11
251	2014/03/11	01:02:30	484.0250	3277.70	28.18	484.0334	3276.68	27.99	1.02
252	2014/03/11	03:02:30	486.0250	3279.52	28.18	486.0334	3278.38	28.00	1.14
253	2014/03/11	05:02:30	488.0250	3281.32	28.18	488.0334	3280.30	27.99	1.01
254	2014/03/11	07:02:30	490.0250	3283.19	28.18	490.0334	3282.11	27.99	1.08
255	2014/03/11	09:02:30	492.0250	3284.81	28.18	492.0334	3283.72	27.99	1.10
256	2014/03/11	10:47:00	493.7667	3286.63	28.17	493.7667	3285.97	27.99	0.67
257	2014/03/11	10:47:00	493.7667	FINAL PRESSURE, UNSETTING BRIDGE PLUG					
258	2014/03/11	10:47:30	493.7750	9433.01	28.30	493.7750	8901.62	28.17	531.39
259	2014/03/11	10:47:30	493.7750	BRIDGE PLUG IS UNSET					
260	2014/03/11	10:48:00	493.7834	9431.95	28.14	493.7834	9397.17	28.02	34.78
261	2014/03/11	11:02:30	494.0250	9189.08	27.15	494.0334	9185.23	26.90	-3.20
262	2014/03/11	11:23:30	494.3750	8960.29	26.70	494.3750	8965.81	26.50	-5.52
263	2014/03/11	11:23:30	494.3750	PULL OUT OF HOLE					
264	2014/03/11	11:24:00	494.3834	8945.39	26.69	494.3834	8958.70	26.49	-13.31
265	2014/03/11	12:07:00	495.1000	106.80	8.67	495.1000	107.76	8.74	-0.96
266	2014/03/11	12:07:00	495.1000	TOOLS AT SURFACE					
267	2014/03/11	12:07:30	495.1084	106.68	8.61	495.1084	107.72	8.71	-1.04
268	2014/03/11	13:00:00	495.9834	105.85	9.52	495.9834	106.93	9.46	-1.09

LOWER Serial Number: VPQ Start Date: 2014/02/18 21:01:00 Run Depth: 992.00

UPPER Serial Number: VPR Start Date: 2014/02/18 21:01:00 Run Depth: 992.00

Print Filter: Print every 2 hour



DATE: February 18 th - March 17 th , 2014	COMPANY: Tundra Oil & Gas Partnership
WELLNAME: Daly	ADDRESS: Virden, MB
LOCATION: 8-21-8-22-9-29 W1	UWI: 102.08-22-009-29W1.00
FIELD: Daly	FORMATION: Bakken
CO HQ REP: Craig Lane	PHONE: 1204 748 4409
FIELD REP: Scott Murray	PHONE: 1306 482 7216
REPORTS TO (NAME & EMAIL ADDRESS): Eric Bjornsson - eric.bjornsson@tundraoilandgas.com Tyler Routledge - tyler.routledge@tundraoilandgas.com Tim Howell - tim.howell@tundraoilandgas.com Craig Lane - craig.lane@tundraoilandgas.com Bill Jenkins - bill.jenkins@tundraoilandgas.com Adam Berke - adam.berke@tundraoilandgas.com Shawn Blaschuk - shawn.blaschuk@tundraoilandgas.com	

STATUS: Oil Well		TEST TYPE: Bridge Plug
ESTIMATED H2S CONTENT: <10 ppm		ESTIMATED CO2 CONTENT: <10 ppm
PRODUCING THROUGH: Tubing		SHUT IN TIME/DATE: See Discription
KOP: 745 mKB	TVD: 922.10 mKB	LICENCE #: 9749
PBTD: N/A	TD: 2448 mKB	WELL TYPE: Horizontal
CASING SIZE: N/A	CSG WEIGHT: N/A	CSG DEPTH: N/A
TUBING SIZE: 177.8 mm	TBG WEIGHT: 34.22 / 29.76 kg/m	TBG DEPTH: 1038.52 mKB
Elevations KB: 539.96 mKB	GRD: 536.22 mKB	CF: 4.41 mKB

PRODUCING INTERVAL

TYPE: Open Hole	SIZE: N/A	INTERVAL: 1038.52 - 2448 mKB
-----------------	-----------	------------------------------

RECORDER INFORMATION

TOP S/N: VPR	FILE NAME: 8-21-8-22-9-29 W1	RANGE: 20,680 kPa
BOTTOM S/N: VPQ	FILE NAME: 8-21-8-22-9-29 W1	RANGE: 20,680 kPa
TOP BATTERY S/N: N/A	BOTTOM BATTERY S/N: N/A	
CONNECT TIME: February 18 th , 2014 21:00:30	DISCONNECT TIME: March 17 th , 2014 13:15:00	

SURFACE TEMP: 7 C	LEASE CONDITION: Muddy
WIRELINE OPERATOR: Ivory Herman	PHONE: 1306 371 5613
WIRELINE ASSISTANT: N/A	
DIRECTIONS: N/A	

DWG WELL HEAD PRESSURES:

TUBING (before survey): N/A	CASING (before survey): N/A
TUBING (after survey): N/A	CASING (after survey): N/A

FLUID LEVEL: N/A	RUN DEPTH: N/A
TIME ON BOTTOM: N/A	TIME OFF BOTTOM: N/A

GRADIENT STOPS

DEPTH mKB:	N/A	FROM:	N/A	UNTIL:	N/A
------------	-----	-------	-----	--------	-----

COMMENTS: Tools were ran in the well by a drilling rig to collect the BHP + BHT below a bridge plug. Tools were then pulled by a service rig.

DESCRIPTION OF WORK DONE:

Tools were ran in the well by a drilling rig to collect the BHP + BHT below a

bridge plug. Tools were then pulled by a service rig.

February 18th, 2014

21:00:30 - RIH

21:43:30 - On bottom

21:47:00 - Bridge plug set

March 11th, 2014

10:47:00 - FINAL STABLE BHP + BHT

10:47:30 - Bridge plug un-set

11:23:30 - POOH

11:29:30 - Surface

March 17th, 2014

13:15:00 - Download data