

## Daly Field

### Daly Field Boundary

Source: Manitoba Petroleum Branch Designated Fields and Pools – 2009

**Figure 1**

R30

R29W1

Figure No. 2

T10

T10

West Butler Unit 1

Daly Unit 5

Proposed  
Daly Unit 6

Ebor Unit 2

R30

R29W1

Figure No. 3

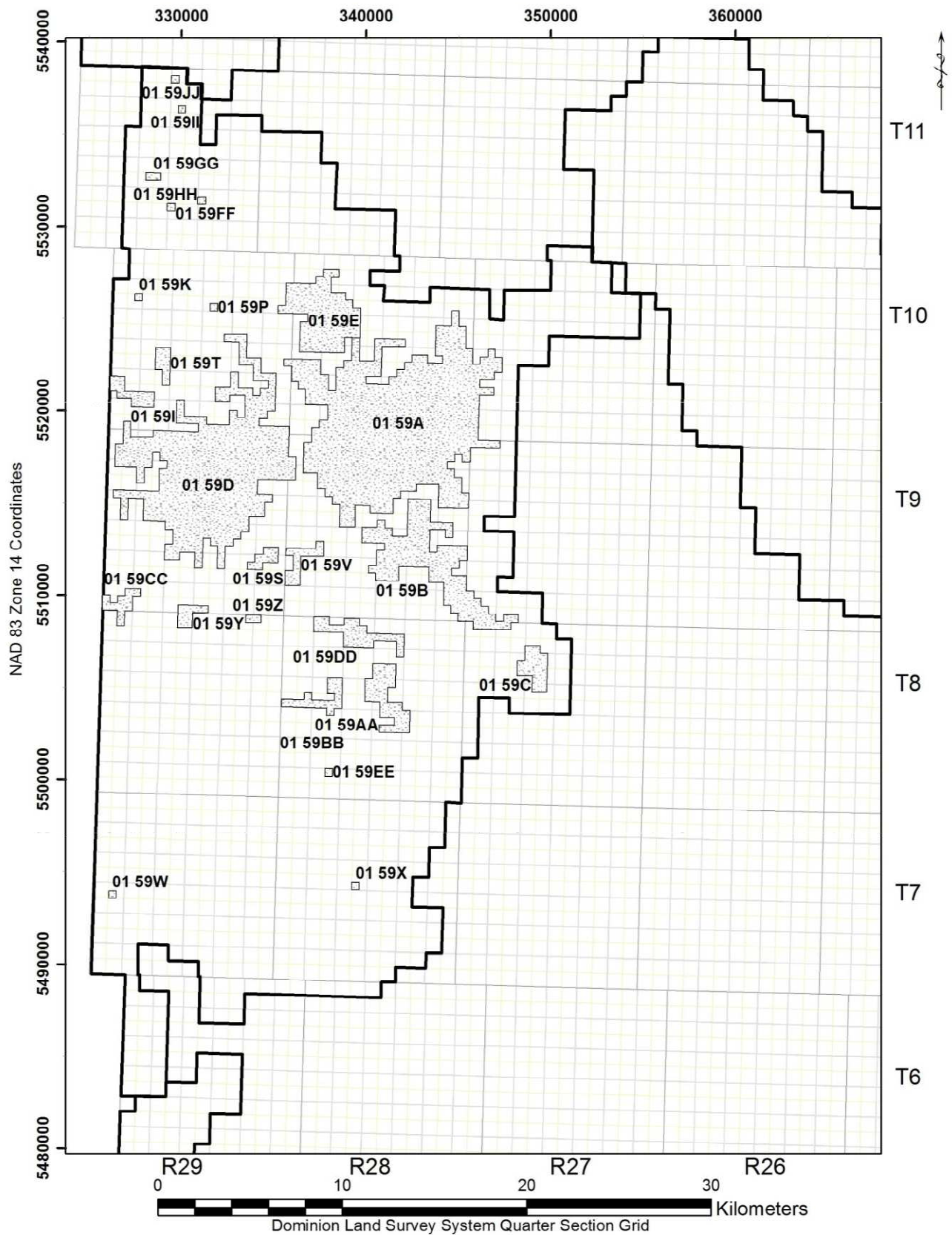
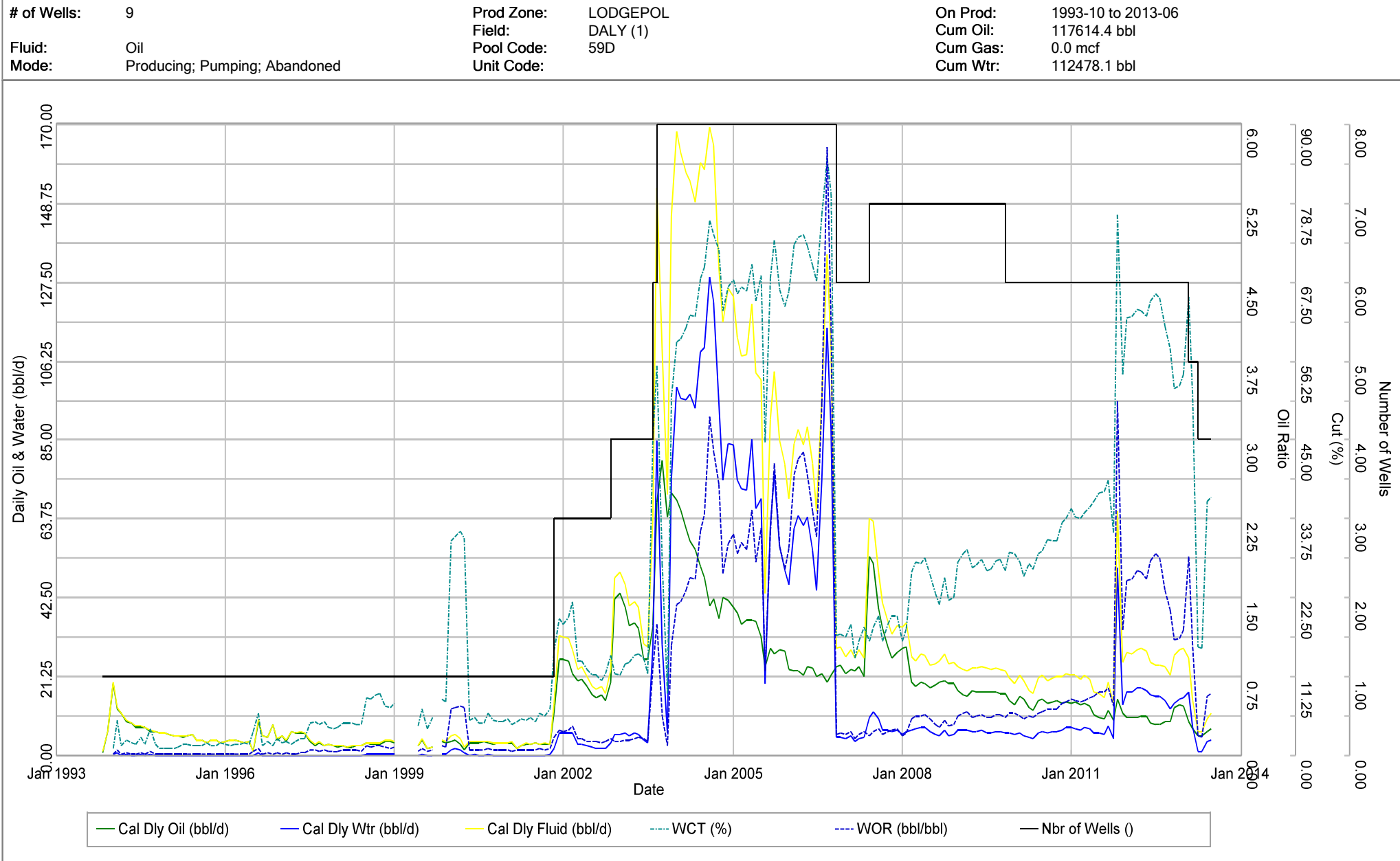


FIGURE 14 - DALY SINCLAIR LODGEPOLE POOLS (01 59A - 01 59II)

## Production Graph



R30

R29W1

Figure No. 5

T10

T10

West Butler Unit 1

Daly Unit 5

Daly Unit 6  
Proposed  
Injector

Ebor Unit 2

R30

R29W1

## Production Graph

# of Wells: 16

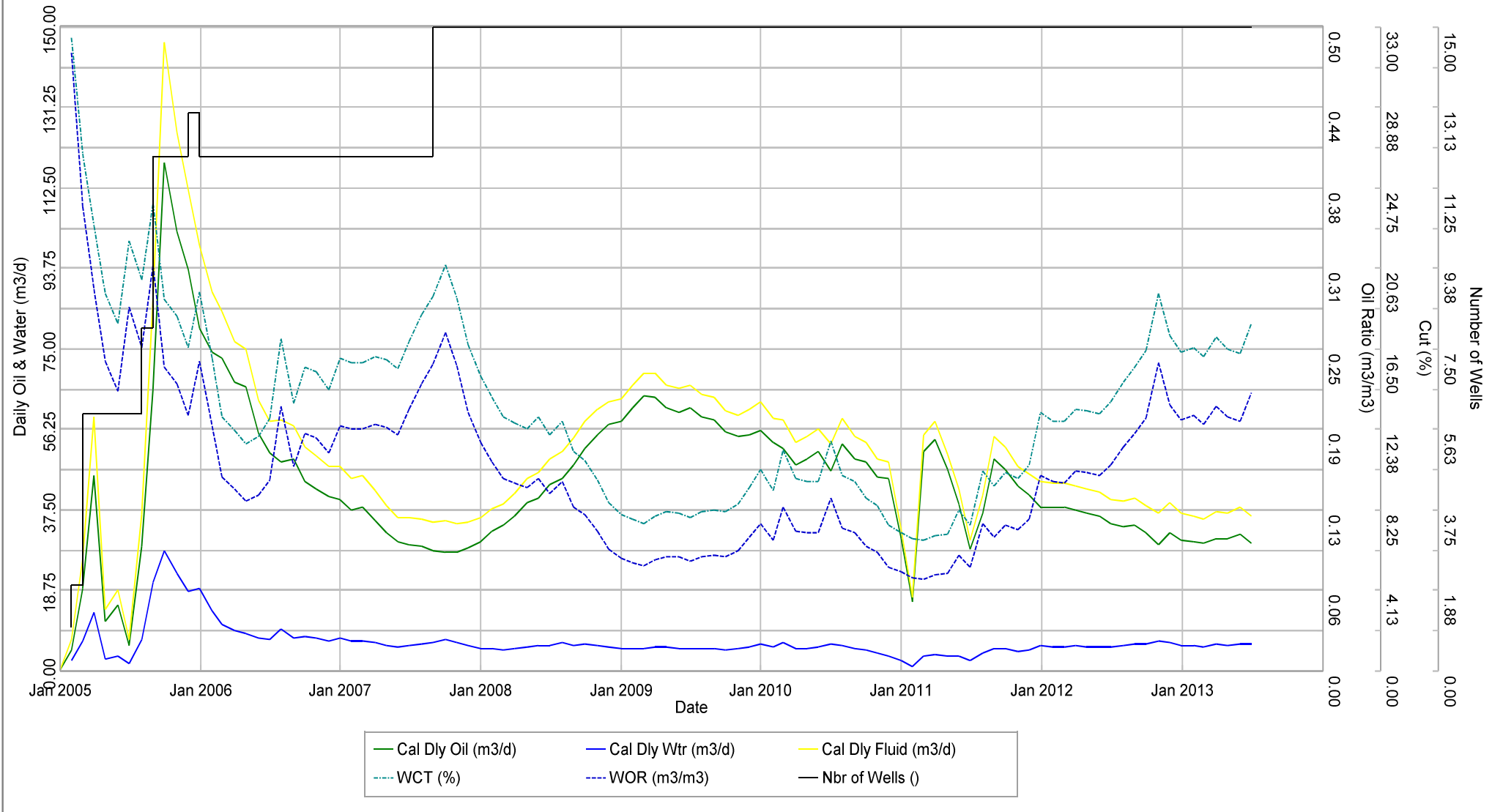
Fluid: Oil; Water Injection  
Mode: Producing; InjectionProd Zone: BAKKEN; TORQUAY  
Field: DALY (1)  
Pool Code: 62B  
Unit Code: 162B01On Prod: 2004-12 to 2013-06  
Cum Oil: 137818.4 m3  
Cum Gas: 0.0 E3m3  
Cum Wtr: 20744.6 m3

Figure No. 7a

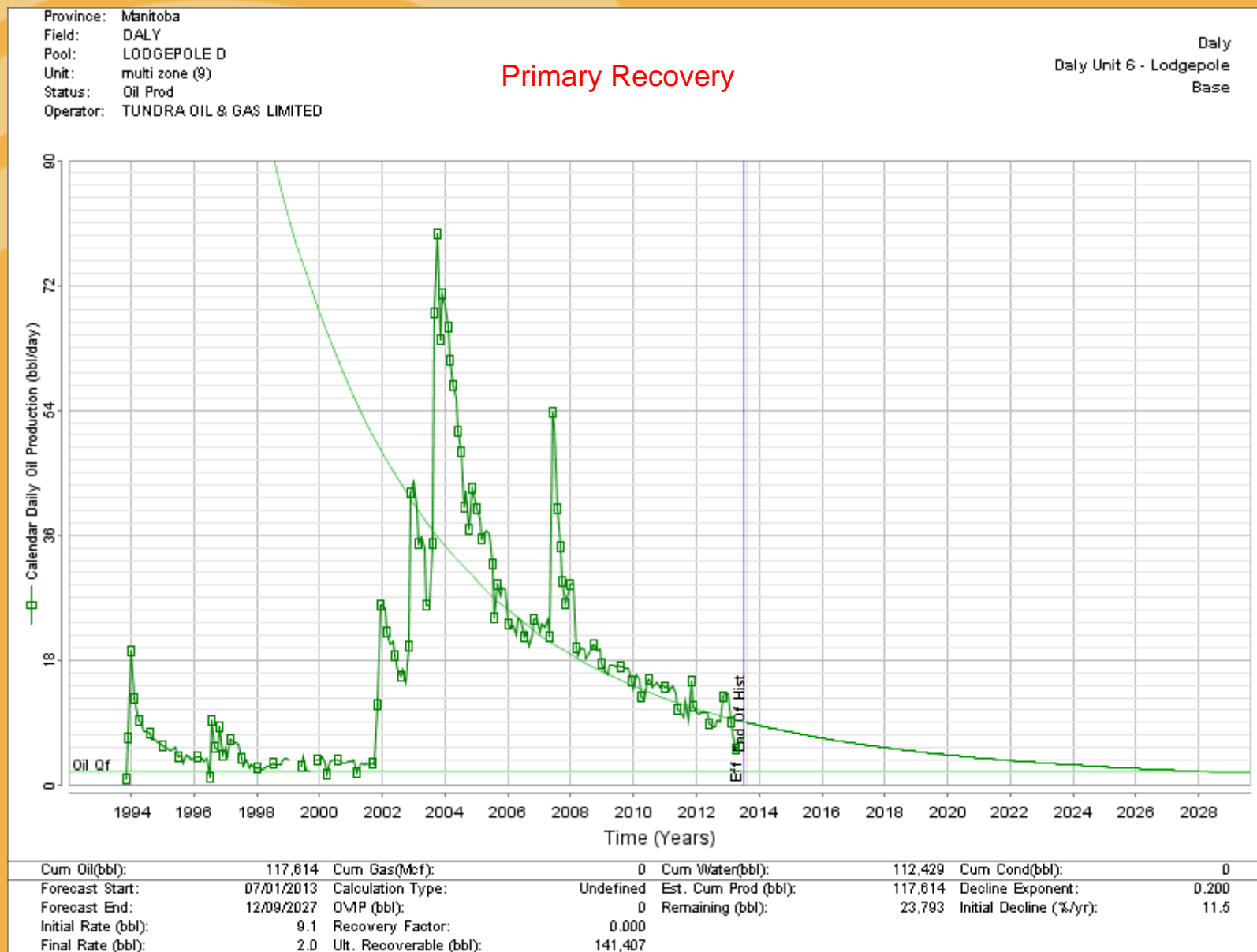




Figure No. 7b

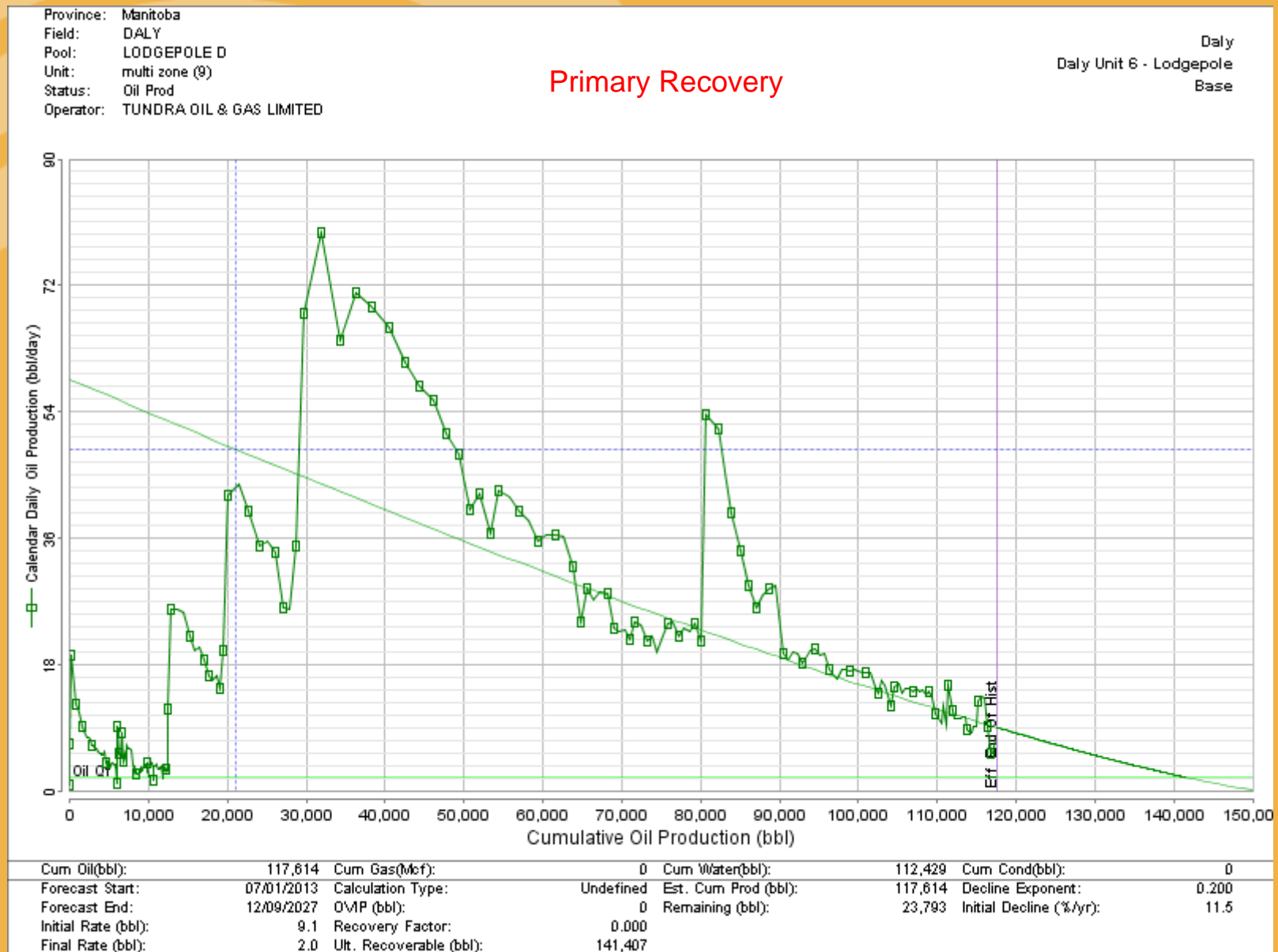




Figure No. 8a

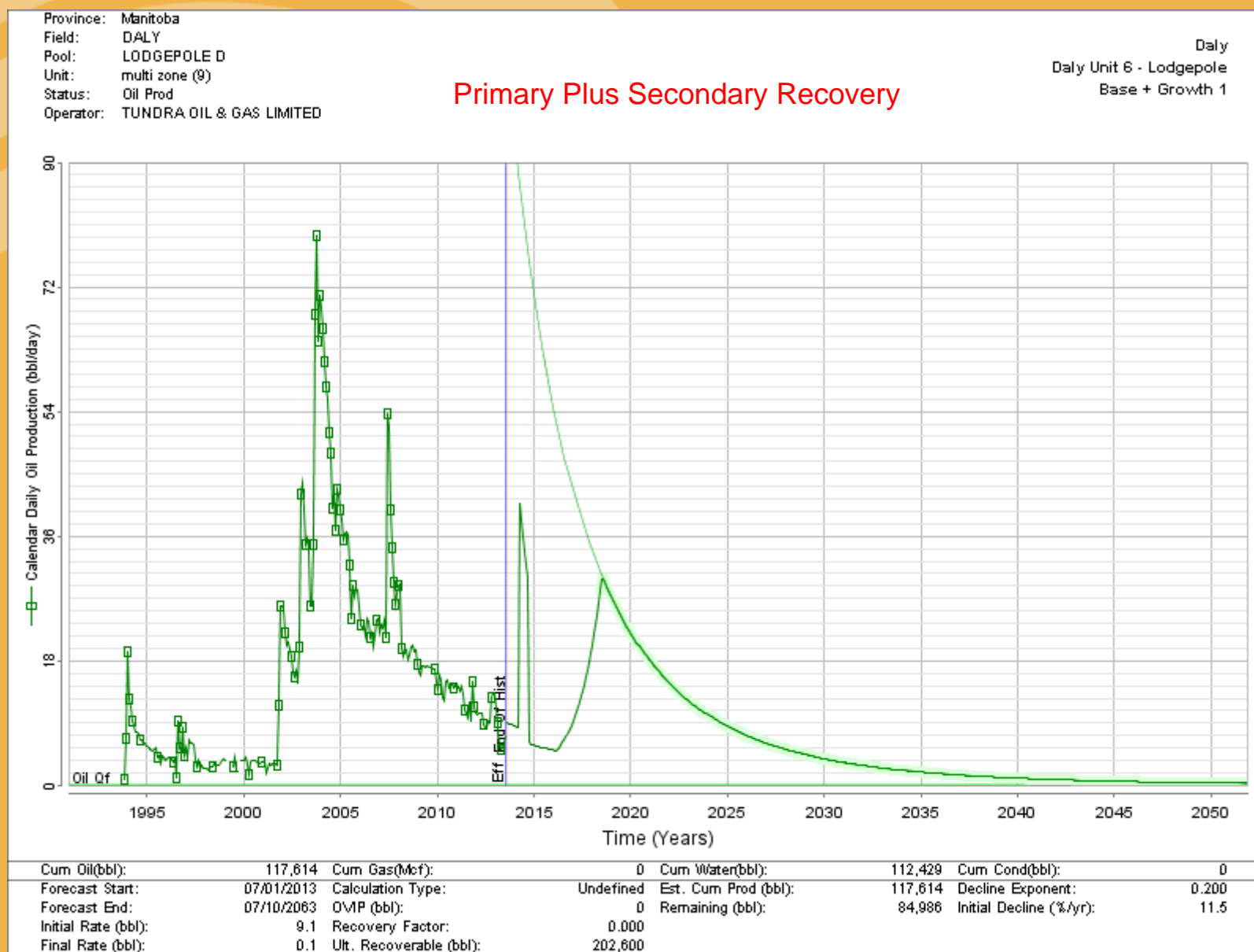


Figure No. 8b

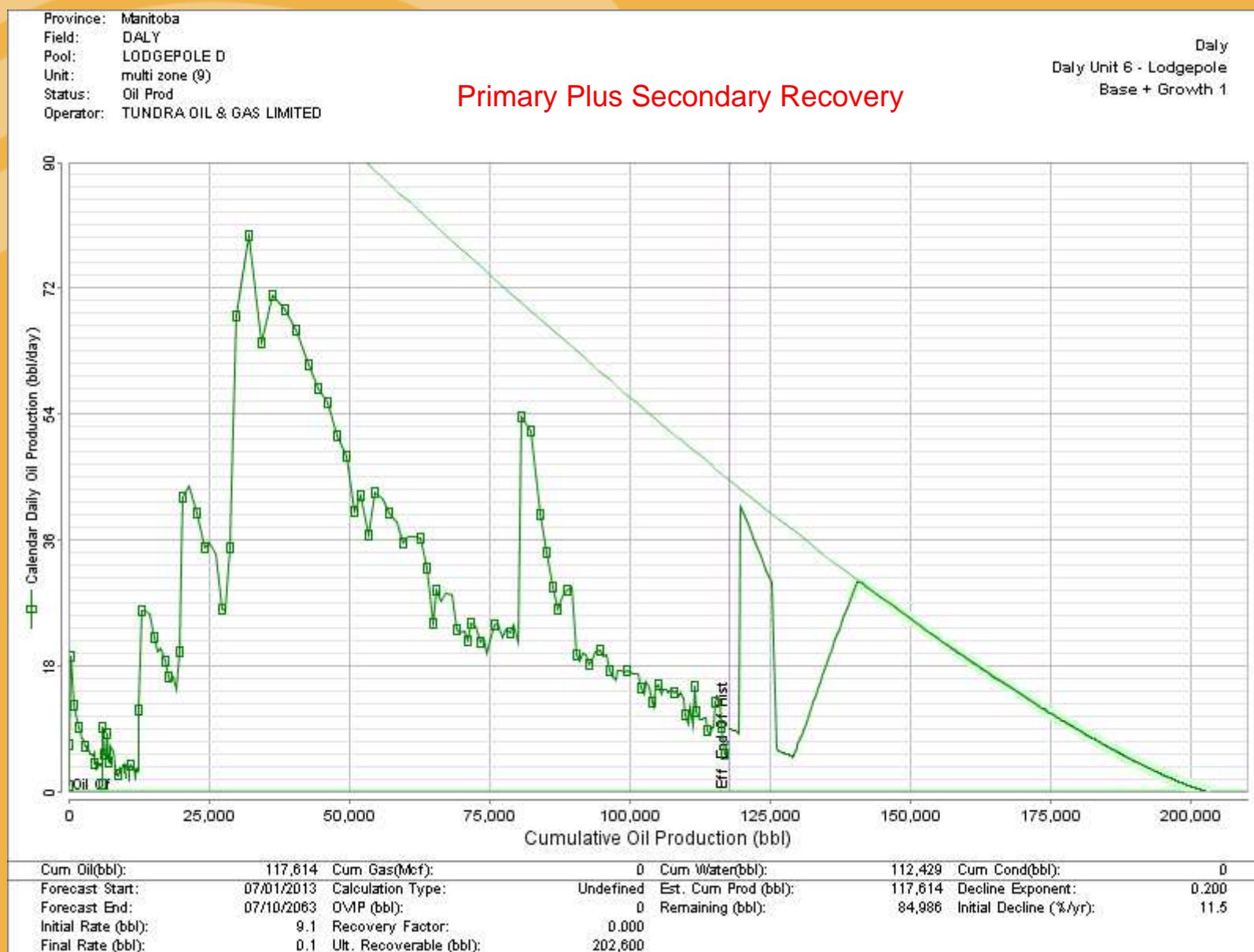
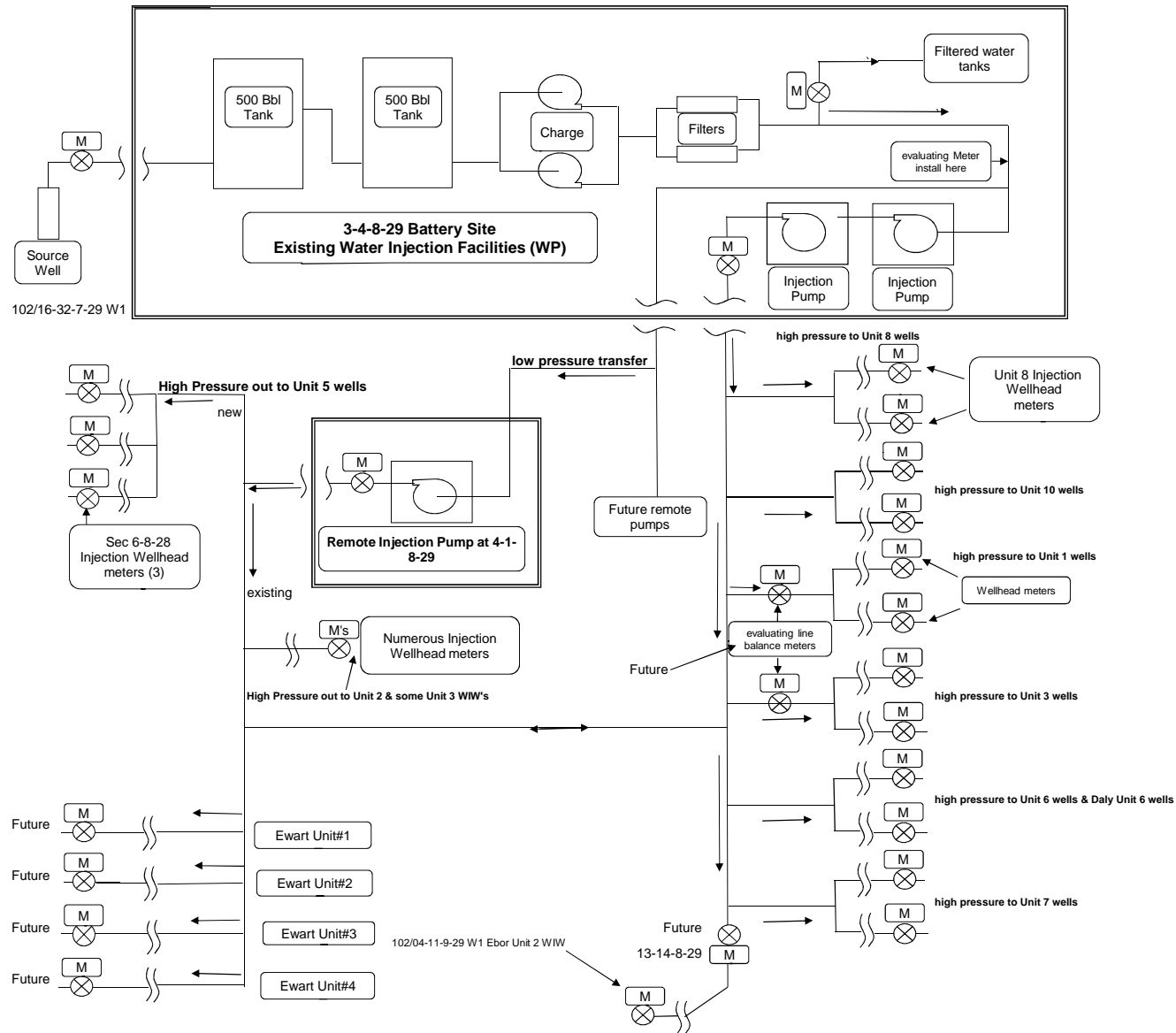


Figure No. 9

## Sinclair Water Injection System



[illegible]