

Daly Unit #3
2014 Annual EOR Report

Executive Summary

In 2014 oil production in the Daly Unit #3 was 57 m³/d (356 bbl/d) totaling 20.6 e³m³ (129.8 mmbbl). In December the unit oil rate was up to 80 m³/d (500 bbl/d). Annual production was up 10.4% from 2013 to 2014. By the end of 2014 cumulative oil production from the Daly Unit #3 was 2 139 e³m³ (13.4 mmbbl).

In December 2014 there were 53 producing oil wells and 22 water injectors active in the unit. In 2014, three horizontals were drilled in the Middle Daly formation and one vertical Crinoidal well was drilled.

Corex Resources has had operatorship of Daly Unit #3 since December 19, 2012.

Discussion

By 1957 the bulk of the development drilling was complete and since then little development has occurred. Water injection began 2 years after the initial production and provided pressure support immediately. Peak production occurred in 1955 at 213 m³/d (1,340 bbl/d). In 1984 producing wells began to be converted to injection wells. As a result of increased water injection, production went from ~75 m³/d in 1984 to ~95 m³/d in 1992. This is very a very poor increase in production with secondary recovery, the waterflood response was muted compared to all of the other units and did not appear to be successful.

Horizontal drilling has been done previously within the unit. In 1996 two wells were drilled and in 1997 three wells were drilled. These unstimulated horizontal wells produce at modest rates, but are high oil cut and have added valuable incremental recoverable reserves to the unit. The low decline production profile of these wells contrasts significantly to horizontal wells produced under primary recovery indicating effective pressure maintenance. Their impact is shown below at a cumulative oil recovery of 1 700 e³m³ (10.7 MMbbl). In 2014, three horizontals in the Middle Daly and a vertical Crinoidal well were drilled in the unit. The wells, especially the horizontals, were successful and greatly improved unit production.

The significant operations in 2014 are as follows:

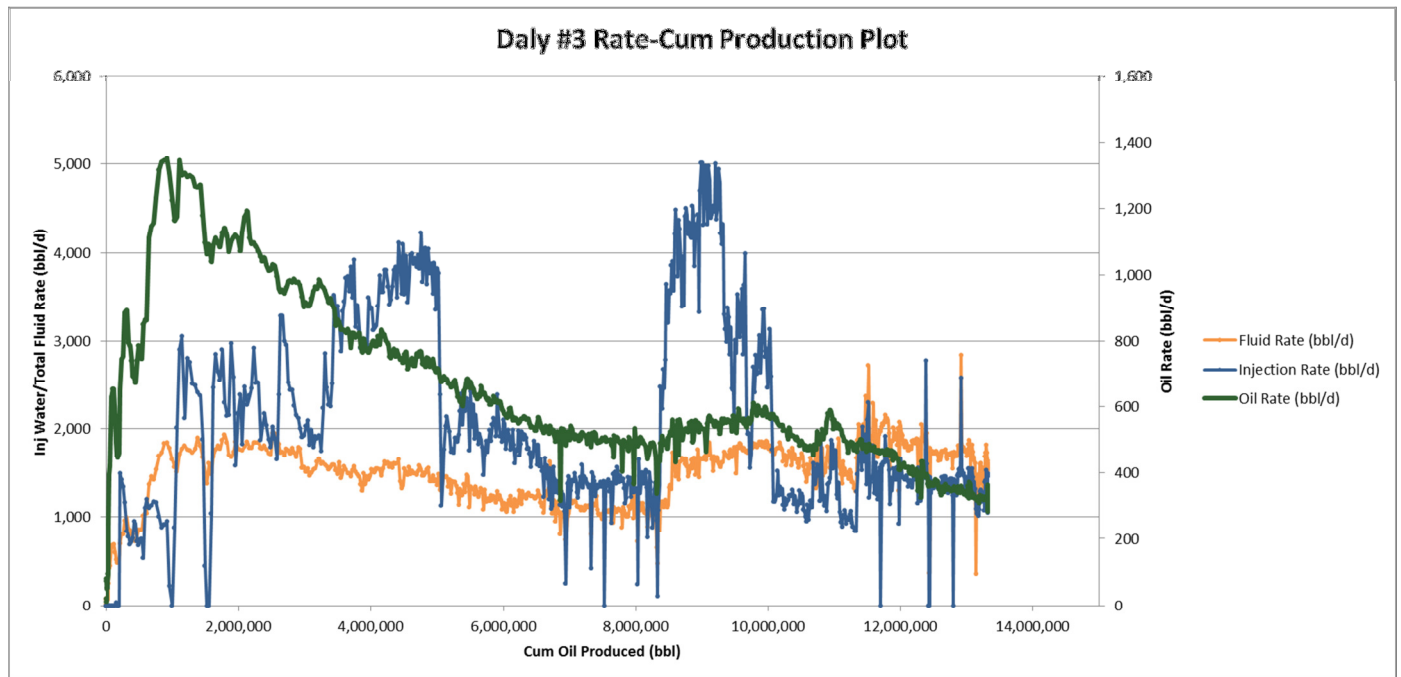
- March 2014, drill 103/15-01-010-28W1/00 disposal well for the unit in the Birdbear, improving the water handling capacity of the unit.
- September 2014, recompleting 100/07-11-010-28W1/00 in the Flossie Lake by fracing. The recompletion was successful with an incremental ~22 bbl/d of oil.
- September 2014, recompleting 100/16-12-010-28W1/00 by fracing into the Middle Daly. The recompletion was successful with an incremental ~12 bbl/d of oil.
- November 2014, drill and frac 102/08-11-010-28W1/00 horizontal in the Middle Daly formation. When attempting to run casing the casing became stuck in hole. No progress was made running in hole. As such the well is partially cased and partially open hole. Consequently, fracs were completed in both the cased and open hole sections of the well.
- November 2014, drill 102/12-11-010-28W1/00 Crinoid vertical well.
- December 2014, drill and frac 103/05-02-010-28W1/00 and 102/10-01-010-28W1/00 (this well was not on production prior to the end of the year) horizontal wells in the Middle Daly formation.

- December 2014, recomplete 100/15-02-010-28W1/00 by fracing in the Flossie and Middle Daly. Recomplete 100/05-02-010-28W1/00 (did not contribute to the year's production) in the Flossie formation. Recomplete 100/11-11-010-28W1/00 in the Flossie formation. It is too early to determine if these were successful, however, given the success of the other recompletes we are hopeful.

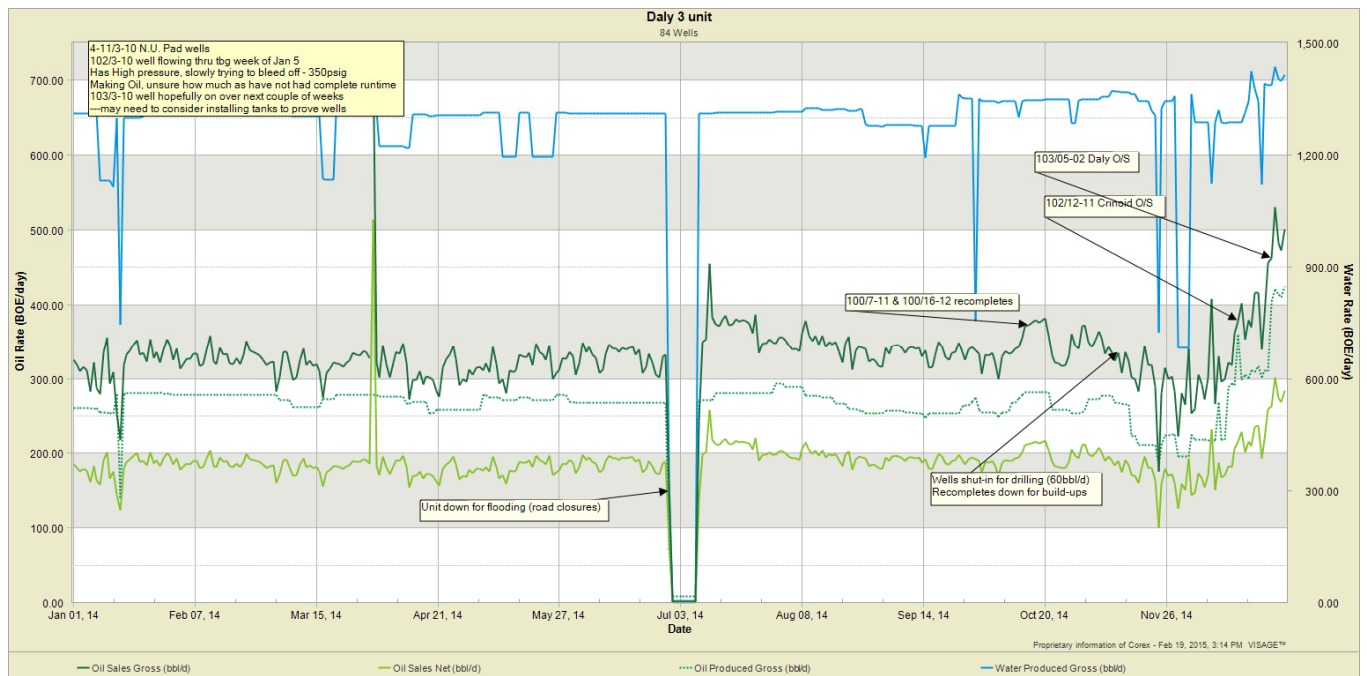
Historically, the waterflood has not been particularly successful, as the high oil cuts throughout the unit can attest. The water may have provided pressure support, but it appears as if there was very little effective sweep in the reservoir and there, in general, has not been break through. This is apportioned to out of zone injection. With the currently high oil cuts it is easier to drill in the unit, but effective secondary recovery will need to be implemented. Furthermore, Chevron while drilling lost a well when they encountered 15 MPa in the Amaranth formation, clearly due to out of zone injection. In some of the wells the casing did not reach past the Amaranth and so injection water was placed in the zone and pressured it up. Therefore, Corex implements extra precautions when drilling in the unit, ensuring the safe drilling of wells. The unit has plenty of potential and improving the waterflood would be beneficial; however, the old verticals should not be considered for injection conversion. The unit is currently set up fully with 5-spot patterns. The water injection rate was 212 m³/d (1 330 bbl/d) in 2014 and the WOR was 3.8 m³/m³. The injected water is not filtered or treated. The water injection rate in the unit is quite low, some clean outs of injectors may be attempted to improve the injectivity in desired areas.

Detailed production, injection, voidage tables and plots for the total unit and each injection pattern are at the end of this report.

Daly #3 – Rate vs Cum Oil Production



Daly #3 – Rate vs Time



2014 Reservoir Pressure Surveys

Unit	UWI	License	Test Type	Date of Pressure	Duration of SI (days)	Datum BHP (kPaa)
Daly #3	100/02-11-010-28W1/00	77	Surface Recorder	12/13/2014	2	12,391
Daly #3	102/04-11-010-28W1/00	4611	Communication Test	12/14/2014	12	770
Daly #3	100/07-11-010-28W1/00	844	BH BU Above BP	11/15/2014	23	7,113
Daly #3	100/08-11-010-28W1/00	193	Surface Recorder	12/13/2014	2	12,637
Daly #3	100/02-12-010-28W1/00	36	FO & Injection	3/15/2014	24	12,542
Daly #3	100/16-12-010-28W1/00	1060	BH BU Below BP	10/27/2014	27	6,137

Prior pressure surveys have shown that the water injection has increased the average reservoir pressure well above the original pool pressure. All recent pressures (2010 and 2011) taken *with bottom hole gauges* have ranged from a low of 9 889 kPaa to 12 464 kPaa, with the majority of those pressures being between 10 500 and 11 000 kPaa. From the limited 2014 data the average reservoir pressure is 9 700 kPaa. The initial reservoir pressure is estimated at 6 585 kPaa and the bubble point pressure as 1 515 kPaa.

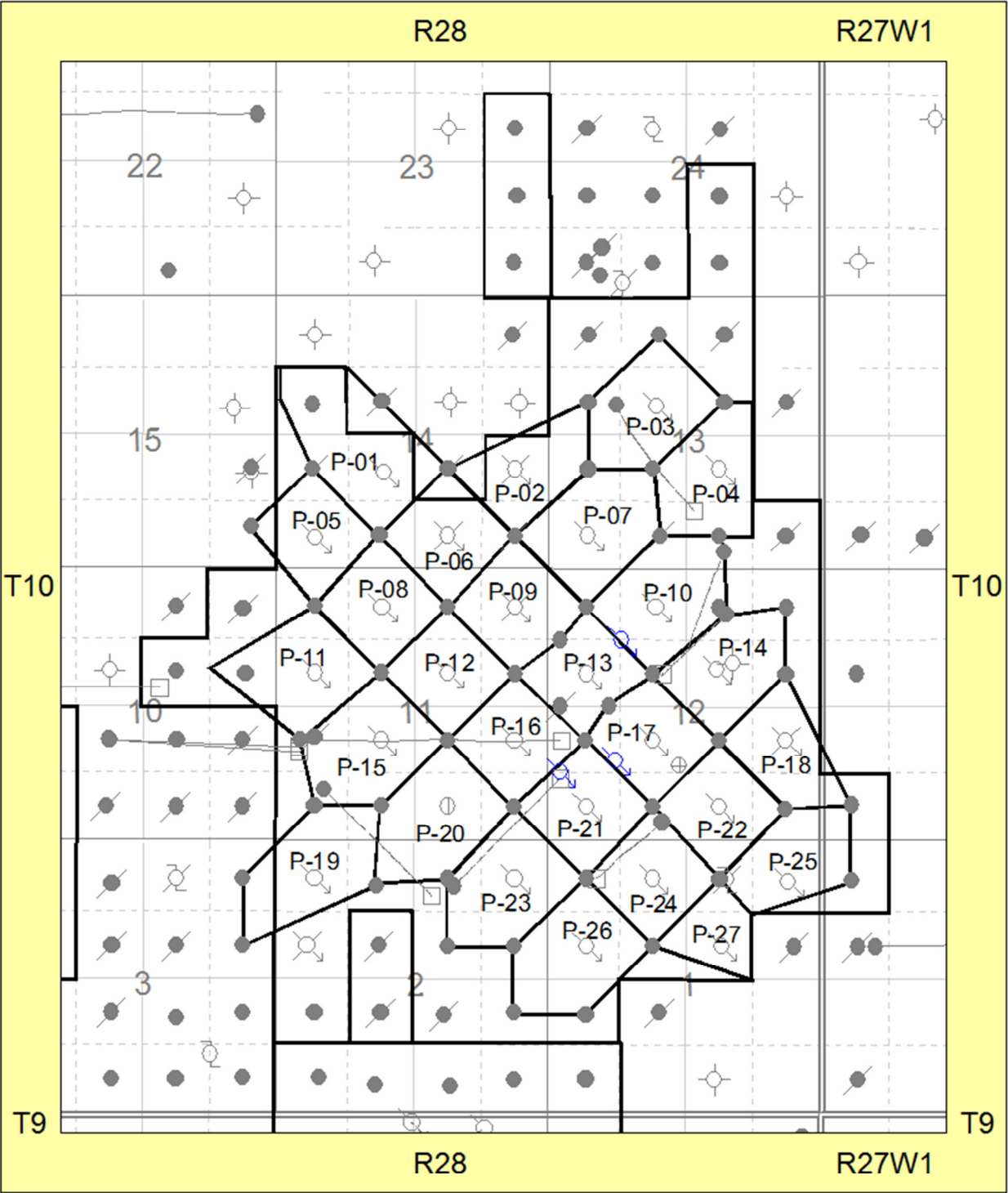
There are some wells in the unit with noticeably low pressures. Oddly, historical data shows many producers surrounded by injectors have had low pressures in the 1,000 kPa range, further indicating poor sweep efficiency and out of zone injection. Conversely, wells far away from injection have been seen to have high pressures that cannot be easily rationalized. The huge range in pressures in adjacent wells and the high oil cuts indicate that there is poor communication between many of the injectors and the producers and that the waterflood cannot be taken to be successful. Considering this, the unit has plenty of opportunity if a successful waterflood is implemented as seen in the other units.

The VRR in 2014 was started at 0.81 and fell to 0.34 at year end; mainly due to drilling in the unit and injectors being shut in. The cumulative VRR at year end was 1.30. An oil formation volume factor of $1.06 \text{ rm}^3/\text{sm}^3$ and a water formation volume factor of $1.04 \text{ rm}^3/\text{sm}^3$ were used in the VRR calculations.

2014 Well Servicing

UWI	Licence	Unit	Operation	Date	Objective
100/02-11-010-28W1/00	000077	DU#3	Equipment Pressure Integrity Test	06-NOV-14	
100/02-12-010-28W1/00	000036	DU#3	Equipment Pressure Integrity Test	25-MAY-14	
100/02-12-010-28W1/00	000036	DU#3	Pressure Build-up/Survey	21-FEB-14	
100/04-12-010-28W1/00	000223	DU#3	Equipment Pressure Integrity Test	24-MAY-14	
100/04-13-010-28W1/00	000576	DU#3	Equipment Pressure Integrity Test	25-MAY-14	
100/05-02-010-28W1/00	000535	DU#3	Recompletion	13-DEC-14	
100/06-12-010-28W1/00	000263	DU#3	Equipment Pressure Integrity Test	25-MAY-14	
100/07-11-010-28W1/00	000844	DU#3	Recompletion	24-NOV-14	
100/08-11-010-28W1/00	000193	DU#3	Equipment Pressure Integrity Test	24-MAY-14	
100/10-11-010-28W1/00	000930	DU#3	Equipment Pressure Integrity Test	24-MAY-14	
100/10-12-010-28W1/00	000167	DU#3	Equipment Pressure Integrity Test	25-MAY-14	
100/11-11-010-28W1/00	000876	DU#3	Recompletion		
100/11-13-010-28W1/00	000650	DU#3	Equipment Pressure Integrity Test	25-MAY-14	
100/12-01-010-28W1/00	000323	DU#3	Equipment Pressure Integrity Test	24-MAY-14	
100/12-11-010-28W1/00	000941	DU#3	Equipment Pressure Integrity Test	24-MAY-14	
100/12-12-010-28W1/00	000214	DU#3	Equipment Pressure Integrity Test	24-MAY-14	
100/13-02-010-28W1/00	000216	DU#3	Equipment Pressure Integrity Test	24-MAY-14	
100/13-12-010-28W1/00	000815	DU#3	Pump Repair	16-JAN-14	
100/13-12-010-28W1/00	000815	DU#3	Acid Treatment	17-MAR-14	
100/15-02-010-28W1/00	000168	DU#3	Recompletion		
100/16-02-010-28W1/00	000230	DU#3	Equipment Pressure Integrity Test	24-MAY-14	
100/16-12-010-28W1/00	001060	DU#3	Recompletion	24-NOV-14	
102/04-11-010-28W1/00	004611	DU#3	Pump Repair		
102/05-02-010-28W1/00	10137	DU#3	Construction		
102/08-11-010-28W1/00	10172	DU#3	Equip Only		
102/08-11-010-28W1/00	10172	DU#3	Initial Completion	21-DEC-14	DALY COMPLETION
102/08-11-010-28W1/00	10172	DU#3	Construction		
102/08-11-010-28W1/00	10172	DU#3	Drilling - original	23-NOV-14	
102/10-01-010-28W1/00	10173	DU#3	Construction		
102/10-01-010-28W1/00	10173	DU#3	Drilling - original	22-DEC-14	
102/12-11-010-28W1/00	10174	DU#3	Construction		
102/12-11-010-28W1/00	10174	DU#3	Drilling - original	02-DEC-14	
102/12-11-010-28W1/00	10174	DU#3	Equip Only		
102/12-11-010-28W1/00	10174	DU#3	Initial Completion		
103/05-02-010-28W1/00	10196	DU#3	Equip & Tie-In		
103/05-02-010-28W1/00	10196	DU#3	Initial Completion	19-DEC-14	DALY COMPLETION
103/05-02-010-28W1/00	10196	DU#3	Construction		
103/05-02-010-28W1/00	10196	DU#3	Drilling - original	08-DEC-14	
1A0/05-12-010-28W1/00	004289	DU#3	Cathodic		
1B0/13-12-010-28W1/00	004293	DU#3	Pump Repair	29-OCT-14	

Waterflood Pattern Map

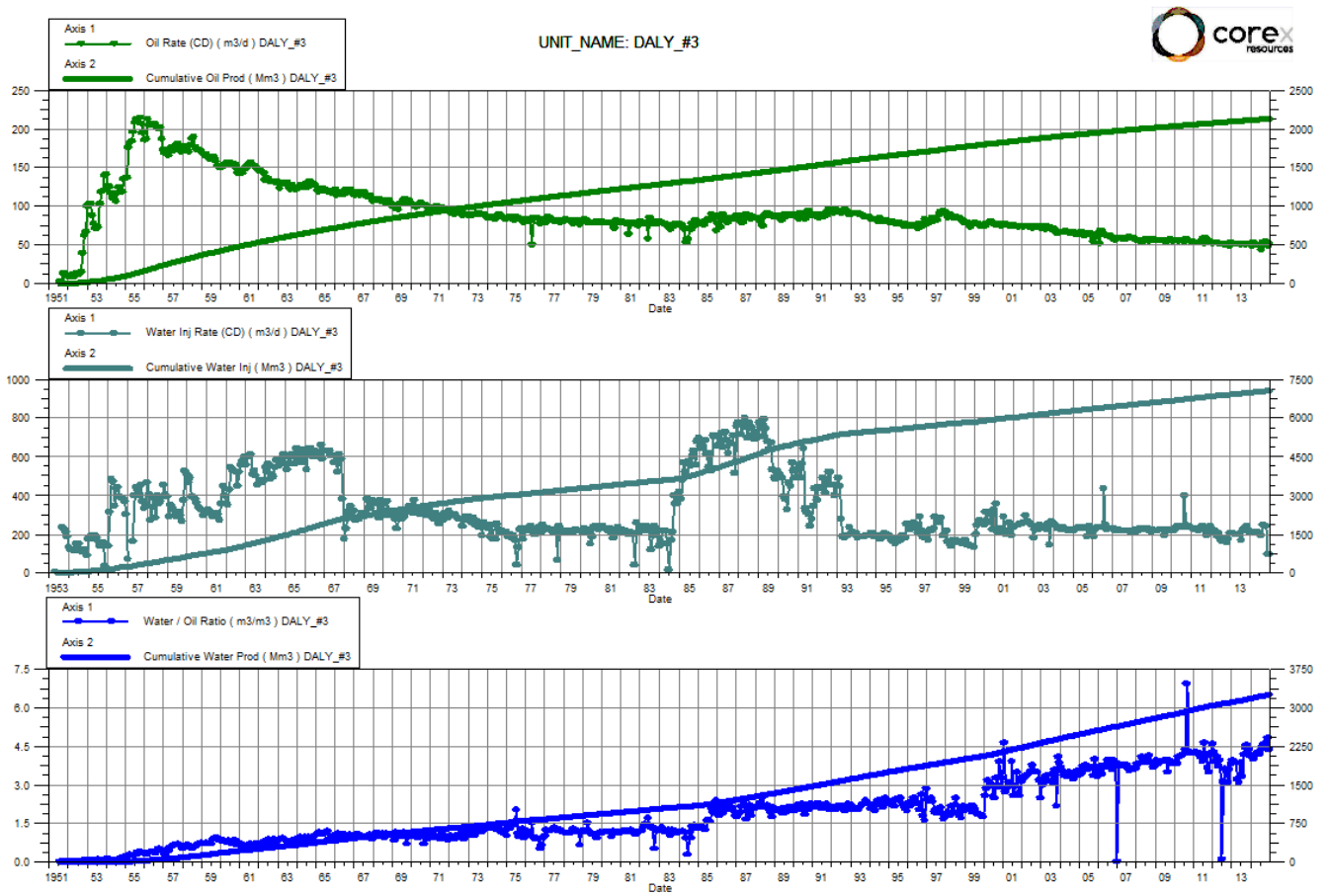


Waterflood Pattern Table

Pattern	Well
P-01	100/06-14-010-28W1/00
P-02	100/08-14-010-28W1/00
P-03	100/11-13-010-28W1/00
P-04	100/07-13-010-28W1/00
P-05	100/04-14-010-28W1/00
P-06	100/02-14-010-28W1/00
P-07	100/04-13-010-28W1/00
P-08	100/14-11-010-28W1/00
P-09	100/16-11-010-28W1/00
P-10	100/14-12-010-28W1/00
P-10	1B0/14-12-010-28W1/00
P-11	100/12-11-010-28W1/00
P-12	100/10-11-010-28W1/00
P-13	100/12-12-010-28W1/00
P-14	100/10-12-010-28W1/00
P-15	100/06-11-010-28W1/00
P-16	100/08-11-010-28W1/00
P-17	100/06-12-010-28W1/00
P-17	1A0/05-12-010-28W1/00
P-18	100/08-12-010-28W1/00
P-19	100/13-02-010-28W1/00
P-20	100/02-11-010-28W1/00
P-21	100/04-12-010-28W1/00
P-21	1B0/05-12-010-28W1/00
P-22	100/02-12-010-28W1/00
P-23	100/16-02-010-28W1/00
P-24	100/14-01-010-28W1/00
P-25	100/16-01-010-28W1/00
P-26	100/12-01-010-28W1/00

Total for Daly Unit #3

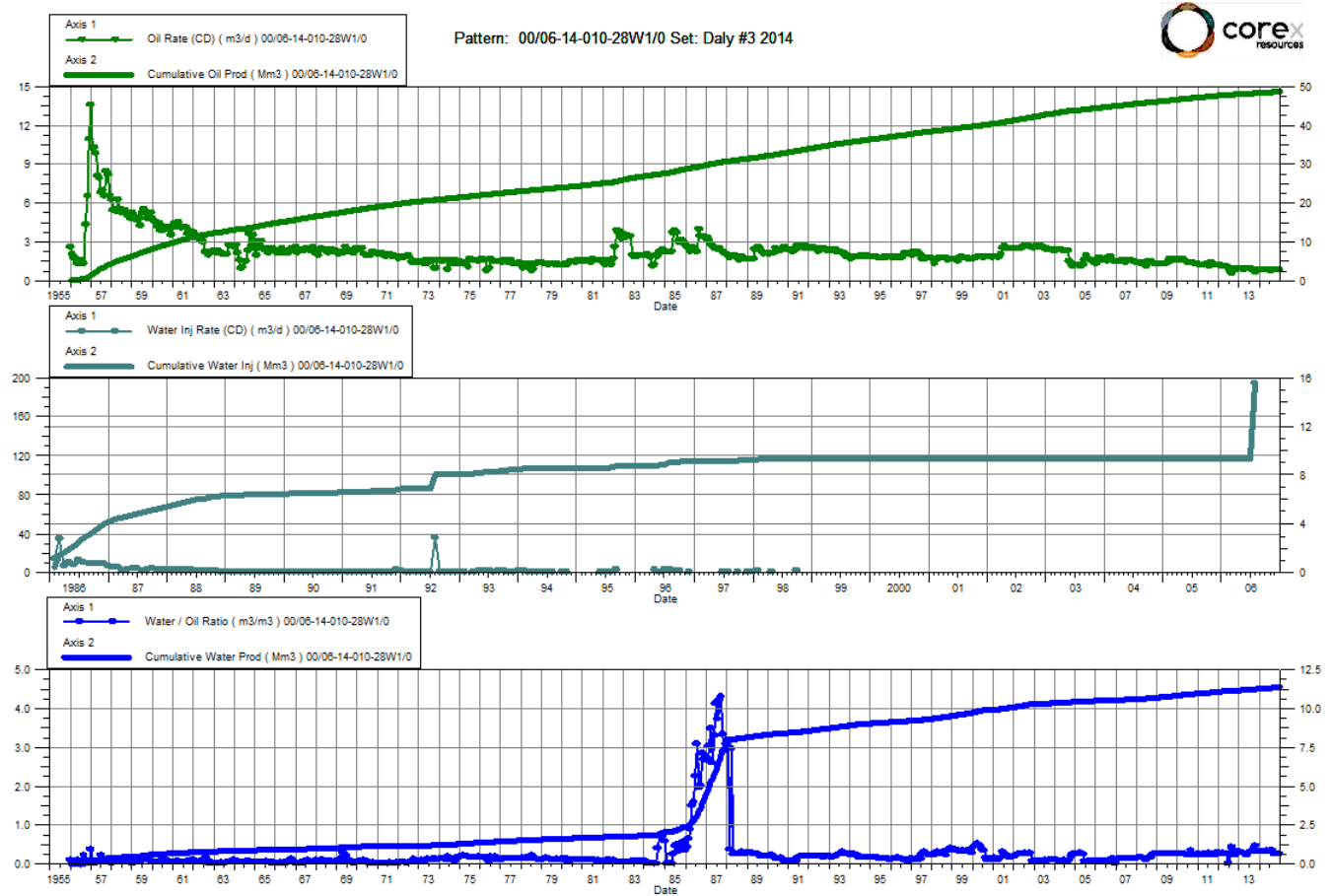
Date	Oil Rate (CD) m3/d	Cum Oil Prod Mm3	Water Rate (CD) m3/d	Cum Water Prod Mm3	Water Inj Rate (CD) m3/d	Cum Water Inj Mm3	Water Oil Ratio m3/m3	Voidage Replacement Ratio	Cum Voidage Replacemnt Ratio	Water Inj Pressure kPa
1/31/2014	48.94	2117.72	200.79	3188.12	202.00	6995.72	4.10	0.81	1.31	6,905
2/28/2014	52.77	2119.20	209.47	3193.99	210.75	7001.62	3.97	0.80	1.31	6,905
3/31/2014	49.98	2120.75	209.08	3200.47	210.84	7008.15	4.18	0.81	1.31	6,905
4/30/2014	49.26	2122.23	208.75	3206.73	210.13	7014.46	4.24	0.81	1.31	6,905
5/31/2014	50.22	2123.79	210.48	3213.26	210.94	7020.99	4.19	0.81	1.31	6,905
6/30/2014	49.04	2125.26	205.17	3219.41	205.30	7027.15	4.18	0.81	1.31	6,927
7/31/2014	44.23	2126.63	192.54	3225.38	190.44	7033.06	4.35	0.80	1.30	6,927
8/31/2014	53.64	2128.29	240.83	3232.85	243.61	7040.61	4.49	0.82	1.30	6,927
9/30/2014	52.32	2129.86	239.26	3240.02	239.40	7047.79	4.57	0.82	1.30	6,891
10/31/2014	53.85	2131.53	242.17	3247.53	243.16	7055.33	4.50	0.82	1.30	5,835
11/30/2014	48.78	2132.99	233.82	3254.55	94.70	7058.17	4.79	0.33	1.30	5,454
12/31/2014	52.01	2134.61	226.05	3261.55	93.76	7061.08	4.35	0.34	1.30	5,249



Daly Unit No. 3

Pattern P-01 - 00/06-14-010-28W1/00

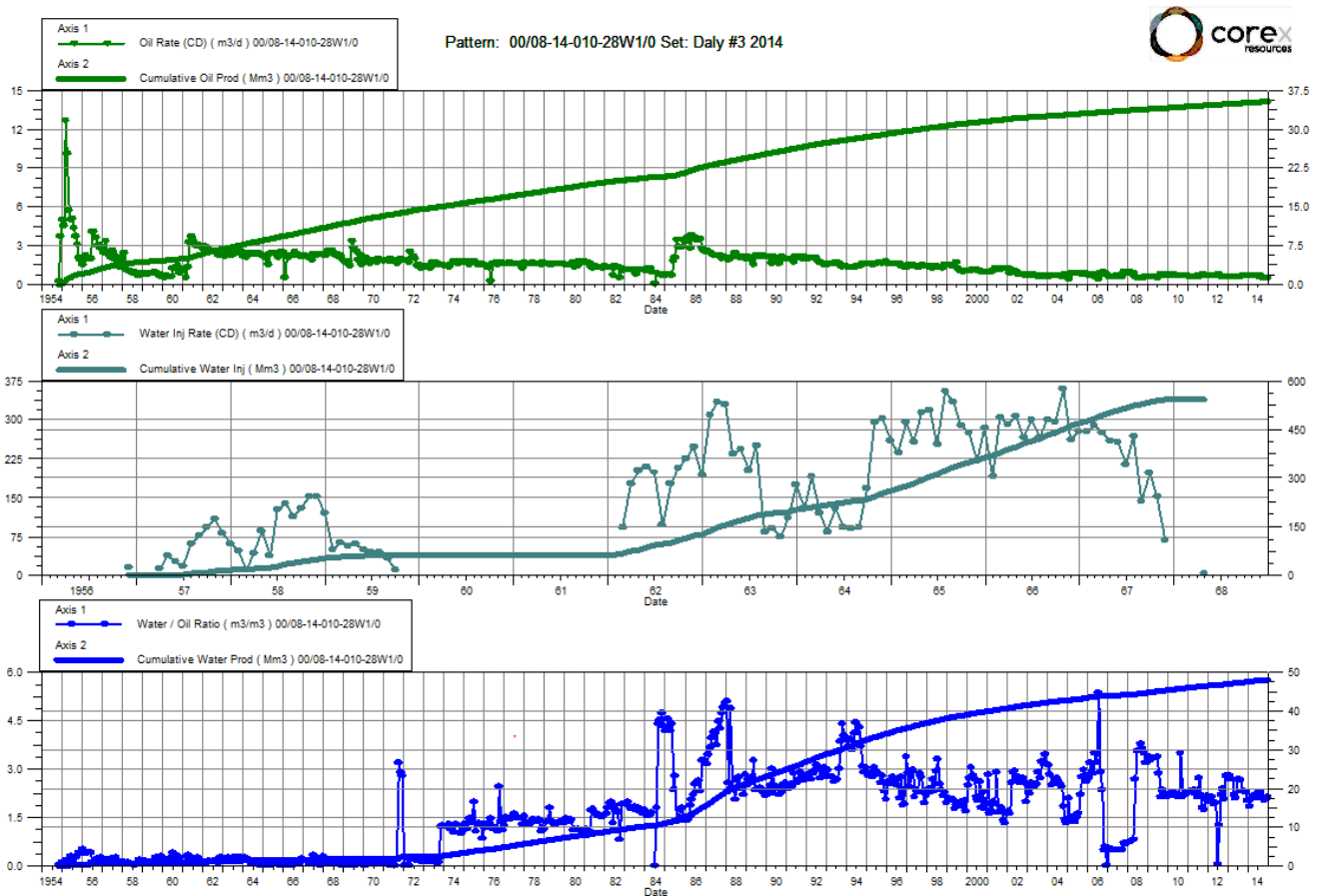
Date	Oil Rate (CD) m3/d	Cum Oil Prod Mm3	Water Rate (CD) m3/d	Cum Water Prod Mm3	Water Inj Rate (CD) m3/d	Cum Water Inj Mm3	Water Oil Ratio m3/m3	Voidage Replacement Ratio	Cum Voidage Replacemt Ratio	Water Inj Pressure kPa
1/31/2014	0.87	48.41	0.28	11.28		15.37	0.32		0.25	--
2/28/2014	0.91	48.44	0.28	11.29		15.37	0.31		0.25	--
3/31/2014	0.88	48.46	0.29	11.30		15.37	0.32		0.25	--
4/30/2014	0.89	48.49	0.29	11.31		15.37	0.32		0.25	--
5/31/2014	0.88	48.52	0.29	11.32		15.37	0.33		0.25	--
6/30/2014	0.88	48.54	0.27	11.33		15.37	0.31		0.25	--
7/31/2014	0.76	48.57	0.26	11.34		15.37	0.34		0.25	--
8/31/2014	0.93	48.60	0.30	11.34		15.37	0.33		0.25	--
9/30/2014	0.88	48.62	0.22	11.35		15.37	0.25		0.25	--
10/31/2014	0.88	48.65	0.21	11.36		15.37	0.24		0.25	--
11/30/2014	0.89	48.68	0.21	11.36		15.37	0.24		0.25	--
12/31/2014	0.86	48.70	0.21	11.37		15.37	0.25		0.25	--



Daly Unit No. 3

Pattern P-02 - 00/08-14-010-28W1/00

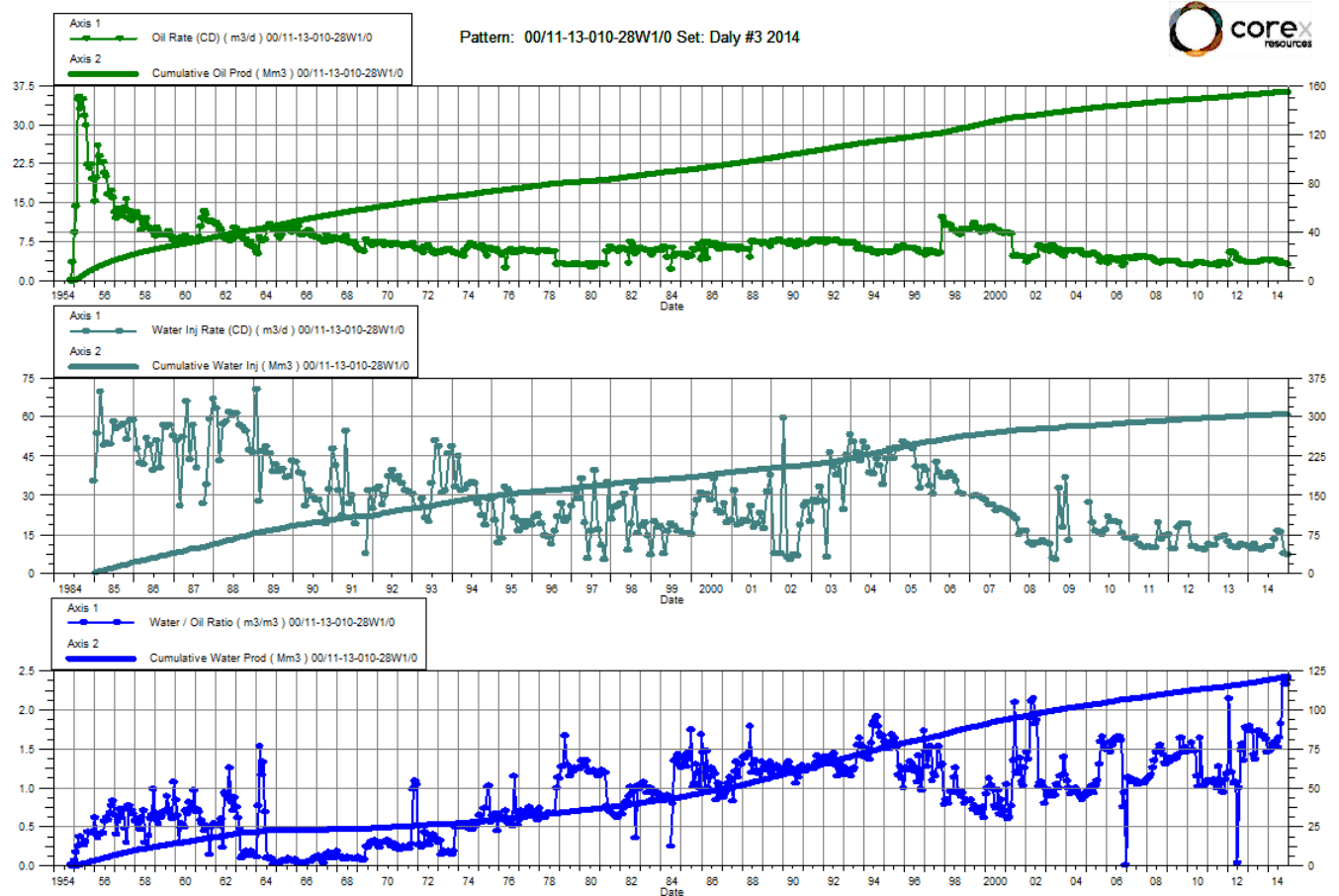
Date	Oil Rate (CD) m3/d	Cum Oil Prod Mm3	Water Rate (CD) m3/d	Cum Water Prod Mm3	Water Inj Rate (CD) m3/d	Cum Water Inj Mm3	Water Oil Ratio m3/m3	Voidage Replacement Ratio	Cum Voidage Replacemt Ratio	Water Inj Pressure kPa
1/31/2014	0.71	35.17	1.28	47.63		542.96	1.82		6.51	--
2/28/2014	0.73	35.19	1.52	47.67		542.96	2.06		6.50	--
3/31/2014	0.72	35.21	1.55	47.72		542.96	2.16		6.49	--
4/30/2014	0.72	35.23	1.55	47.77		542.96	2.16		6.49	--
5/31/2014	0.72	35.25	1.58	47.82		542.96	2.20		6.48	--
6/30/2014	0.71	35.28	1.49	47.86		542.96	2.10		6.48	--
7/31/2014	0.61	35.29	1.40	47.90		542.96	2.28		6.47	--
8/31/2014	0.72	35.32	1.63	47.95		542.96	2.26		6.47	--
9/30/2014	0.51	35.33	1.08	47.99		542.96	2.11		6.46	--
10/31/2014	0.51	35.35	1.04	48.02		542.96	2.03		6.46	--
11/30/2014	0.52	35.36	1.05	48.05		542.96	2.04		6.46	--
12/31/2014	0.50	35.38	1.06	48.08		542.96	2.11		6.45	--



Daly Unit No. 3

Pattern P-03 - 00/11-13-010-28W1/00

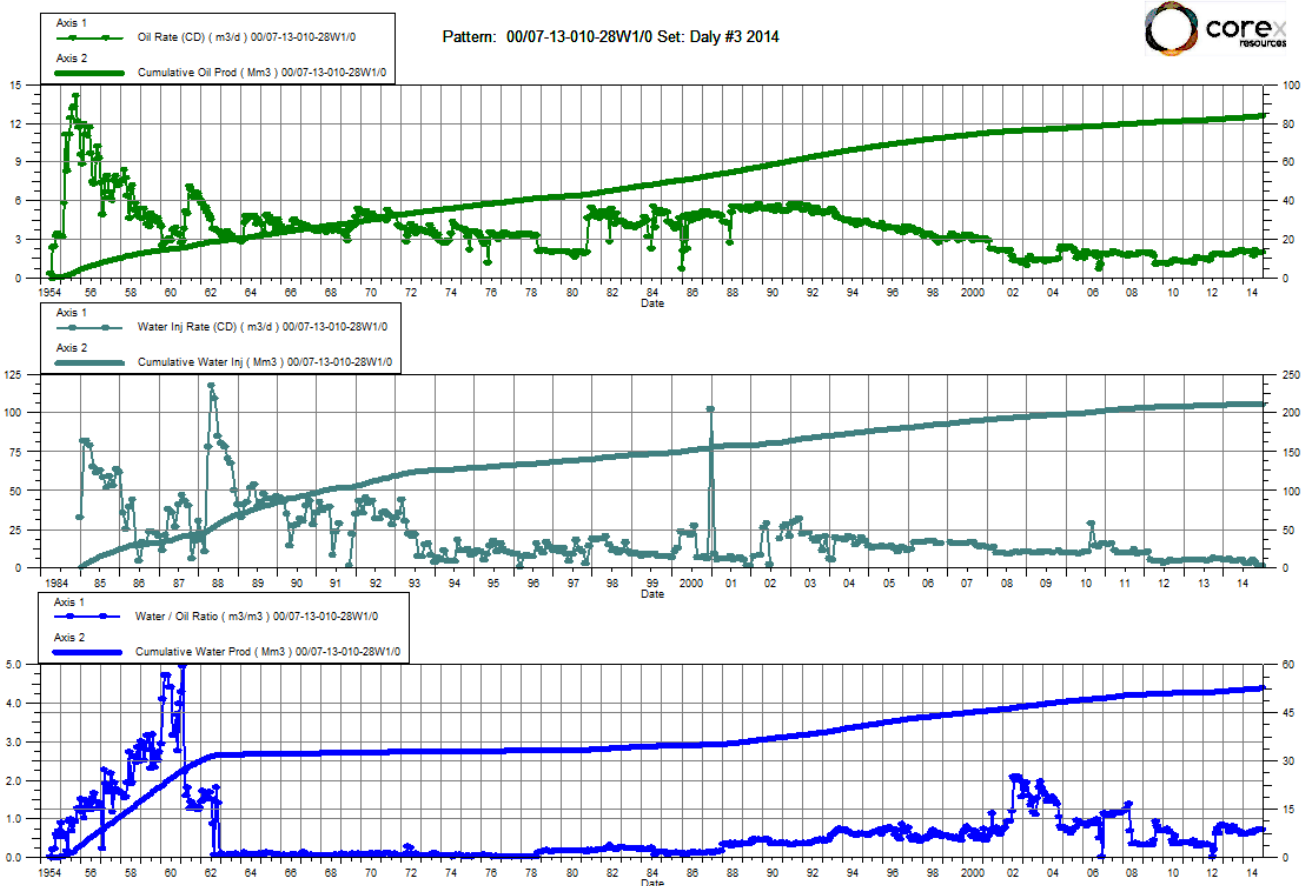
Date	Oil Rate (CD) m3/d	Cum Oil Prod Mm3	Water Rate (CD) m3/d	Cum Water Prod Mm3	Water Inj Rate (CD) m3/d	Cum Water Inj Mm3	Water Oil Ratio m3/m3	Voidage Replacement Ratio	Cum Voidage Replacemt Ratio	Water Inj Pressure kPa
1/31/2014	3.88	154.26	5.71	119.50	9.19	302.68	1.47	0.95	1.09	6,600
2/28/2014	4.06	154.37	6.02	119.67	10.95	302.98	1.48	1.08	1.09	6,600
3/31/2014	3.95	154.49	6.14	119.86	9.33	303.27	1.55	0.92	1.09	6,600
4/30/2014	3.97	154.61	6.16	120.04	8.93	303.54	1.55	0.88	1.09	6,600
5/31/2014	3.96	154.74	6.28	120.24	9.77	303.84	1.59	0.95	1.09	6,600
6/30/2014	3.91	154.85	5.91	120.41	10.07	304.14	1.51	1.02	1.09	6,600
7/31/2014	3.37	154.96	5.54	120.59	10.47	304.47	1.64	1.17	1.09	6,600
8/31/2014	3.93	155.08	7.12	120.81	13.05	304.87	1.81	1.17	1.09	6,600
9/30/2014	3.28	155.18	7.85	121.04	16.11	305.36	2.40	1.44	1.09	6,590
10/31/2014	3.26	155.28	7.57	121.28	15.97	305.85	2.32	1.47	1.09	6,290
11/30/2014	3.29	155.38	7.63	121.51	7.54	306.08	2.32	0.69	1.09	6,013
12/31/2014	3.19	155.48	7.67	121.74	7.16	306.30	2.40	0.66	1.09	6,400



Daly Unit No. 3

Pattern P-04 - 00/07-13-010-28W1/00

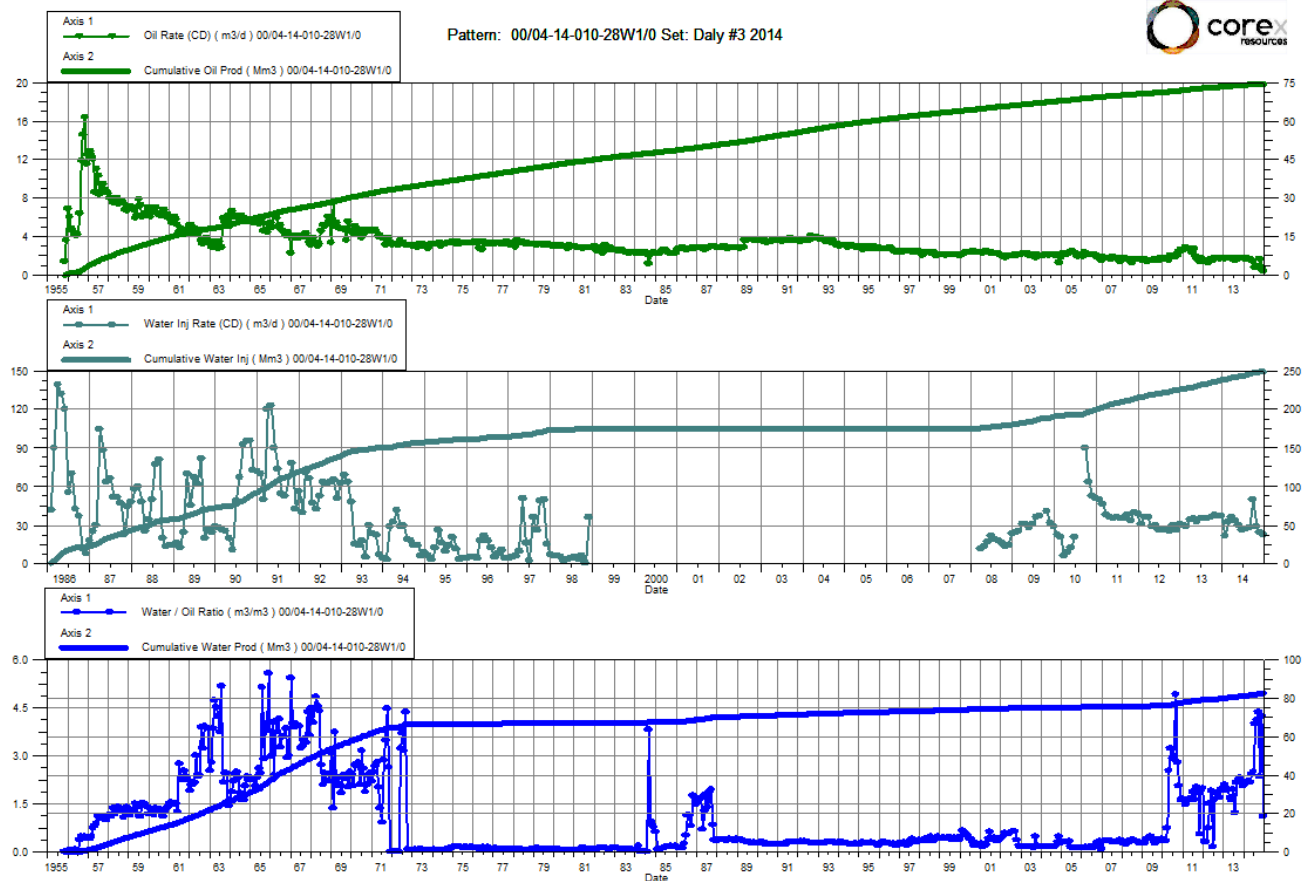
Date	Oil Rate (CD) m3/d	Cum Oil Prod Mm3	Water Rate (CD) m3/d	Cum Water Prod Mm3	Water Inj Rate (CD) m3/d	Cum Water Inj Mm3	Water Oil Ratio m3/m3	Voidage Replacement Ratio	Cum Voidage Replacemt Ratio	Water Inj Pressure kPa
1/31/2014	2.02	83.21	1.24	52.23	5.09	210.57	0.62	1.54	1.54	7,300
2/28/2014	2.12	83.27	1.27	52.26	5.35	210.72	0.60	1.56	1.54	7,300
3/31/2014	2.05	83.33	1.29	52.30	4.35	210.85	0.63	1.29	1.54	7,300
4/30/2014	2.07	83.40	1.29	52.34	4.23	210.98	0.63	1.24	1.54	7,300
5/31/2014	2.06	83.46	1.32	52.38	4.95	211.13	0.64	1.45	1.54	7,300
6/30/2014	2.03	83.52	1.24	52.42	5.20	211.29	0.61	1.57	1.54	7,300
7/31/2014	1.76	83.57	1.16	52.46	2.54	211.37	0.66	0.86	1.54	7,300
8/31/2014	2.18	83.64	1.46	52.50	2.64	211.45	0.67	0.72	1.54	7,300
9/30/2014	2.03	83.70	1.45	52.55	4.86	211.59	0.71	1.38	1.54	7,257
10/31/2014	2.02	83.77	1.39	52.59	3.21	211.69	0.69	0.93	1.53	5,977
11/30/2014	2.03	83.83	1.41	52.63	1.39	211.73	0.69	0.40	1.53	5,300
12/31/2014	1.98	83.89	1.41	52.68	1.32	211.78	0.72	0.39	1.53	5,300



Daly Unit No. 3

Pattern P-05 - 00/04-14-010-28W1/00

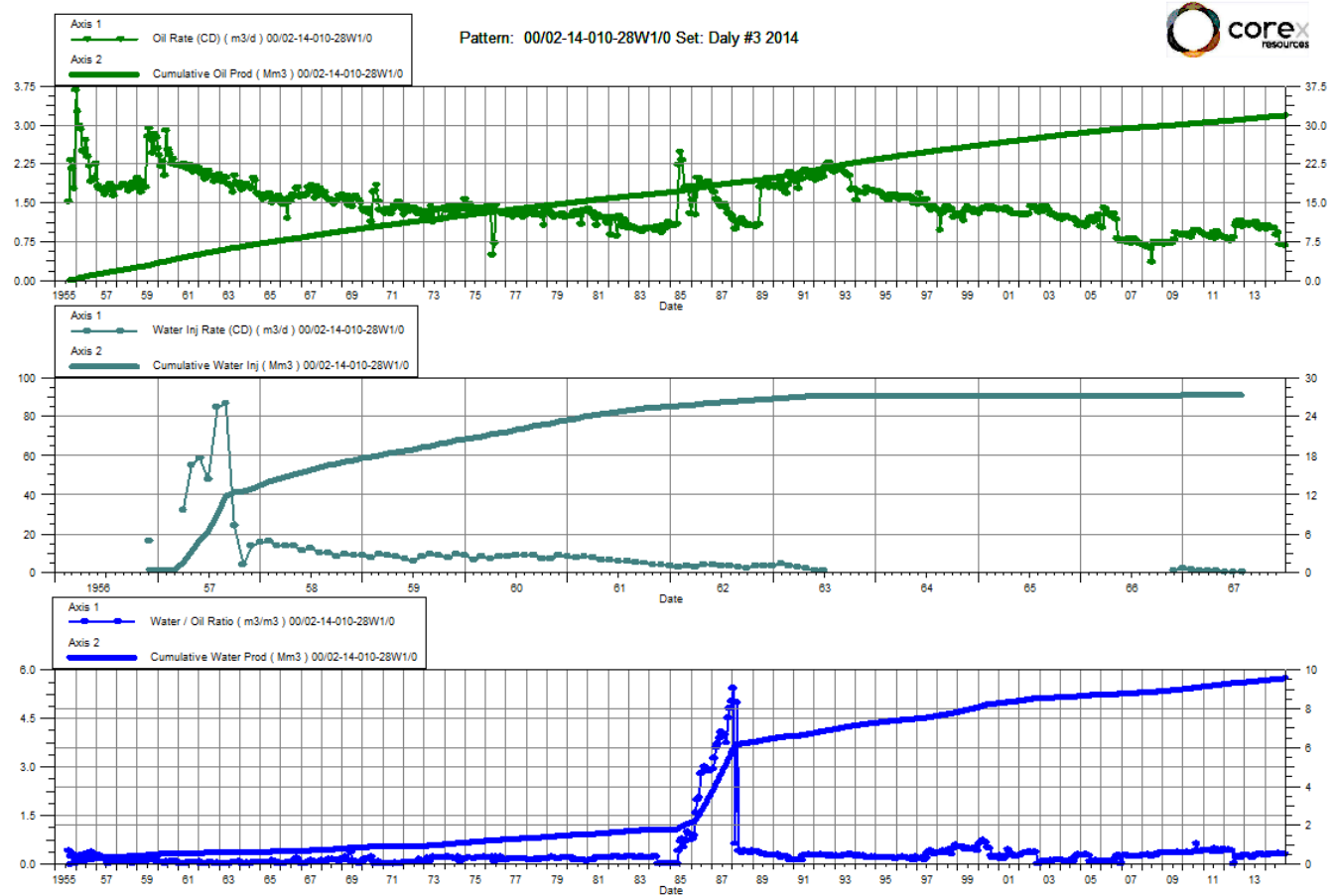
Date	Oil Rate (CD) m3/d	Cum Oil Prod Mm3	Water Rate (CD) m3/d	Cum Water Prod Mm3	Water Inj Rate (CD) m3/d	Cum Water Inj Mm3	Water Oil Ratio m3/m3	Voidage Replacement Ratio	Cum Voidage Replacemt Ratio	Water Inj Pressure kPa
1/31/2014	1.69	74.19	3.54	81.31	21.17	239.23	2.09	4.02	1.52	6,800
2/28/2014	1.80	74.24	3.87	81.42	32.54	240.14	2.15	5.70	1.53	6,800
3/31/2014	1.66	74.29	3.65	81.54	36.37	241.27	2.20	6.82	1.53	6,800
4/30/2014	1.69	74.34	3.67	81.65	33.09	242.26	2.17	6.14	1.54	6,800
5/31/2014	1.53	74.39	3.69	81.76	30.03	243.19	2.41	5.72	1.54	6,800
6/30/2014	1.37	74.43	3.43	81.86	26.12	243.98	2.50	5.41	1.55	6,800
7/31/2014	0.77	74.46	3.09	81.96	27.20	244.82	4.01	7.01	1.55	6,800
8/31/2014	0.93	74.49	3.83	82.08	27.56	245.68	4.12	5.76	1.56	6,800
9/30/2014	0.87	74.51	3.81	82.19	50.18	247.18	4.36	10.67	1.56	6,773
10/31/2014	1.64	74.56	3.87	82.31	28.49	248.06	2.35	5.14	1.57	5,989
11/30/2014	0.88	74.59	3.71	82.42	23.85	248.78	4.23	5.18	1.57	5,575
12/31/2014	0.51	74.61	0.55	82.44	22.65	249.48	1.09	21.21	1.57	3,400



Daly Unit No. 3

Pattern P-06 - 00/02-14-010-28W1/00

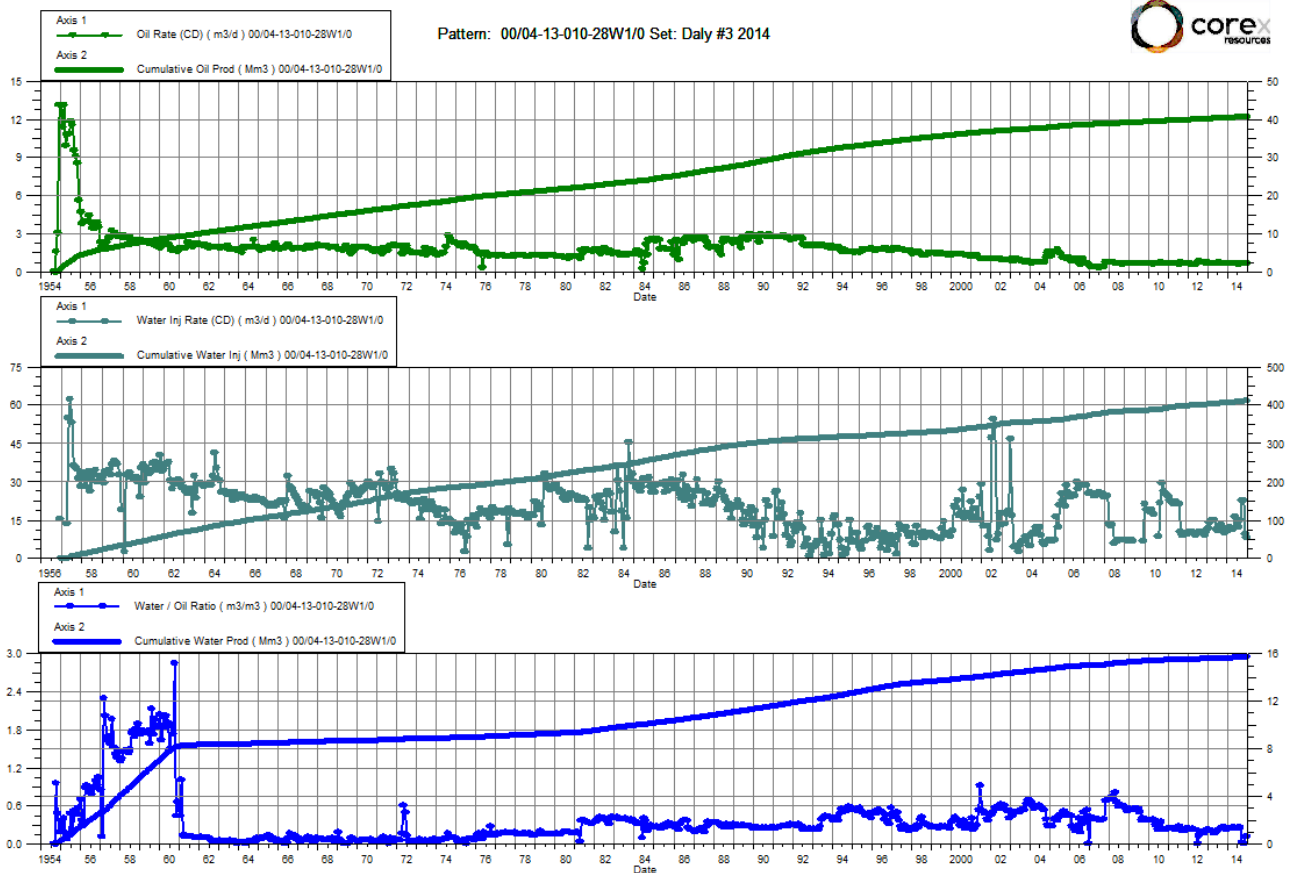
Date	Oil Rate (CD) m3/d	Cum Oil Prod Mm3	Water Rate (CD) m3/d	Cum Water Prod Mm3	Water Inj Rate (CD) m3/d	Cum Water Inj Mm3	Water Oil Ratio m3/m3	Voidage Replacement Ratio	Cum Voidage Replacemt Ratio	Water Inj Pressure kPa
1/31/2014	1.01	31.59	0.28	9.48		27.41	0.28		0.66	--
2/28/2014	1.06	31.62	0.29	9.49		27.41	0.27		0.66	--
3/31/2014	1.03	31.65	0.29	9.50		27.41	0.29		0.66	--
4/30/2014	1.03	31.68	0.30	9.51		27.41	0.29		0.66	--
5/31/2014	1.03	31.72	0.30	9.51		27.41	0.29		0.66	--
6/30/2014	1.02	31.75	0.28	9.52		27.41	0.28		0.65	--
7/31/2014	0.88	31.77	0.26	9.53		27.41	0.30		0.65	--
8/31/2014	0.93	31.80	0.30	9.54		27.41	0.32		0.65	--
9/30/2014	0.70	31.82	0.22	9.55		27.41	0.31		0.65	--
10/31/2014	0.70	31.85	0.21	9.55		27.41	0.30		0.65	--
11/30/2014	0.71	31.87	0.22	9.56		27.41	0.30		0.65	--
12/31/2014	0.69	31.89	0.22	9.57		27.41	0.31		0.65	--



Daly Unit No. 3

Pattern P-07 - 00/04-13-010-28W1/00

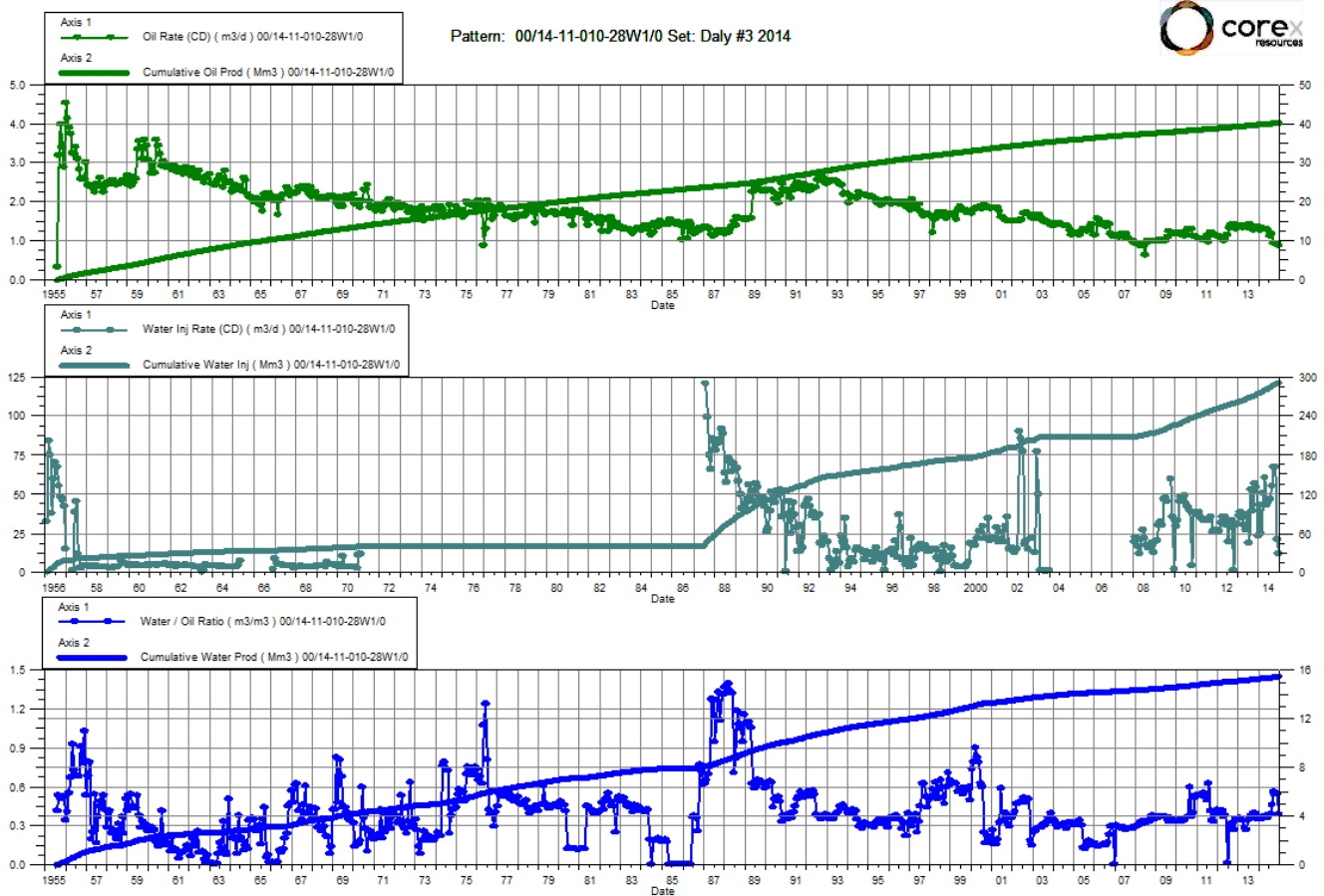
Date	Oil Rate (CD) m3/d	Cum Oil Prod Mm3	Water Rate (CD) m3/d	Cum Water Prod Mm3	Water Inj Rate (CD) m3/d	Cum Water Inj Mm3	Water Oil Ratio m3/m3	Voidage Replacement Ratio	Cum Voidage Replacemt Ratio	Water Inj Pressure kPa
1/31/2014	0.69	40.58	0.17	15.67	10.90	407.66	0.25	12.55	7.15	7,300
2/28/2014	0.72	40.60	0.17	15.68	12.09	408.00	0.24	13.29	7.15	7,300
3/31/2014	0.70	40.62	0.18	15.68	11.71	408.36	0.25	13.21	7.15	7,300
4/30/2014	0.71	40.64	0.18	15.69	11.31	408.70	0.25	12.61	7.16	7,300
5/31/2014	0.71	40.66	0.18	15.69	16.21	409.20	0.26	17.96	7.16	7,300
6/30/2014	0.70	40.68	0.17	15.70	14.32	409.63	0.25	16.29	7.17	7,300
7/31/2014	0.60	40.70	0.16	15.70	12.04	410.00	0.26	15.58	7.17	7,300
8/31/2014	0.73	40.72	0.18	15.71	14.95	410.47	0.25	16.10	7.17	7,300
9/30/2014	0.71	40.75	0.01	15.71	22.74	411.15	0.01	31.01	7.18	7,247
10/31/2014	0.71	40.77	0.01	15.71	22.44	411.84	0.01	30.79	7.19	5,708
11/30/2014	0.71	40.79	0.08	15.71	9.43	412.13	0.12	11.65	7.19	5,892
12/31/2014	0.69	40.81	0.08	15.71	7.92	412.37	0.12	10.02	7.20	4,200



Daly Unit No. 3

Pattern P-08 - 00/14-11-010-28W1/00

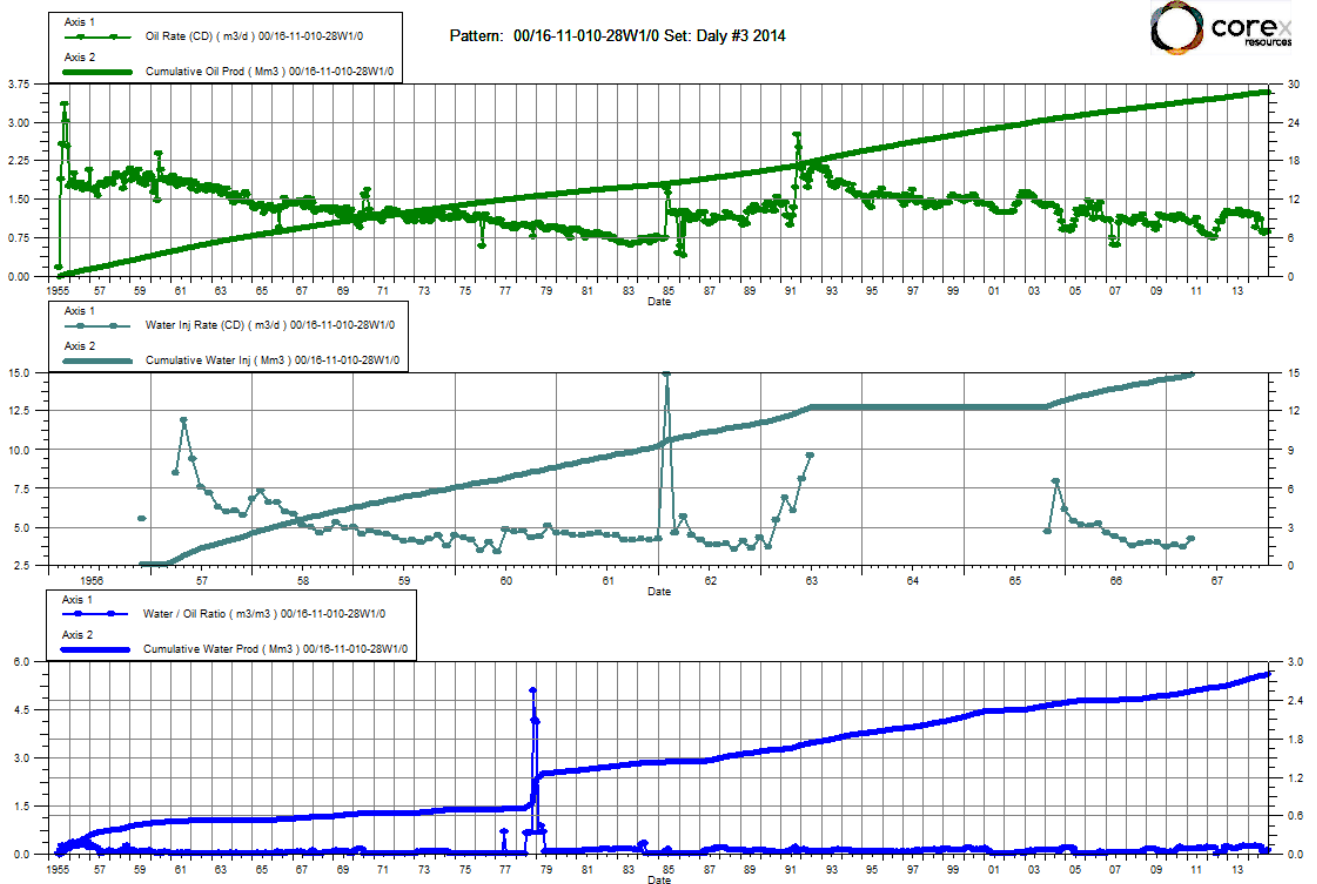
Date	Oil Rate (CD) m3/d	Cum Oil Prod Mm3	Water Rate (CD) m3/d	Cum Water Prod Mm3	Water Inj Rate (CD) m3/d	Cum Water Inj Mm3	Water Oil Ratio m3/m3	Voidage Replacement Ratio	Cum Voidage Replacemt Ratio	Water Inj Pressure kPa
1/31/2014	1.28	39.80	0.46	15.28	43.33	276.08	0.36	24.53	4.94	4,400
2/28/2014	1.34	39.84	0.47	15.30	24.43	276.76	0.35	13.31	4.95	4,400
3/31/2014	1.30	39.88	0.48	15.31	50.71	278.34	0.37	28.13	4.97	4,400
4/30/2014	1.31	39.92	0.48	15.33	60.46	280.15	0.37	33.32	5.00	4,400
5/31/2014	1.30	39.96	0.49	15.34	42.81	281.48	0.38	23.52	5.02	4,400
6/30/2014	1.29	39.99	0.46	15.36	44.20	282.80	0.36	24.90	5.04	4,400
7/31/2014	1.11	40.03	0.43	15.37	46.77	284.25	0.39	29.89	5.06	4,400
8/31/2014	1.19	40.07	0.55	15.39	55.38	285.97	0.46	31.35	5.09	4,400
9/30/2014	0.94	40.09	0.53	15.40	67.66	288.00	0.56	45.59	5.12	4,400
10/31/2014	0.93	40.12	0.50	15.42	67.83	290.10	0.54	46.55	5.15	4,406
11/30/2014	0.94	40.15	0.51	15.43	21.08	290.73	0.54	14.33	5.16	4,600
12/31/2014	0.87	40.18	0.34	15.44	11.99	291.11	0.39	9.73	5.16	4,600



Daly Unit No. 3

Pattern P-09 - 00/16-11-010-28W1/00

Date	Oil Rate (CD) m3/d	Cum Oil Prod Mm3	Water Rate (CD) m3/d	Cum Water Prod Mm3	Water Inj Rate (CD) m3/d	Cum Water Inj Mm3	Water Oil Ratio m3/m3	Voidage Replacement Ratio	Cum Voidage Replacemt Ratio	Water Inj Pressure kPa
1/31/2014	1.19	28.43	0.26	2.73		14.84	0.22		0.47	--
2/28/2014	1.23	28.46	0.26	2.74		14.84	0.21		0.47	--
3/31/2014	1.20	28.50	0.27	2.75		14.84	0.23		0.47	--
4/30/2014	1.21	28.53	0.27	2.76		14.84	0.22		0.47	--
5/31/2014	0.96	28.56	0.26	2.77		14.84	0.27		0.47	--
6/30/2014	1.21	28.60	0.26	2.77		14.84	0.22		0.47	--
7/31/2014	1.12	28.63	0.25	2.78		14.84	0.22		0.46	--
8/31/2014	1.11	28.67	0.23	2.79		14.84	0.21		0.46	--
9/30/2014	0.89	28.70	0.09	2.79		14.84	0.10		0.46	--
10/31/2014	0.83	28.72	0.08	2.79		14.84	0.09		0.46	--
11/30/2014	0.89	28.75	0.08	2.80		14.84	0.09		0.46	--
12/31/2014	0.87	28.78	0.08	2.80		14.84	0.10		0.46	--

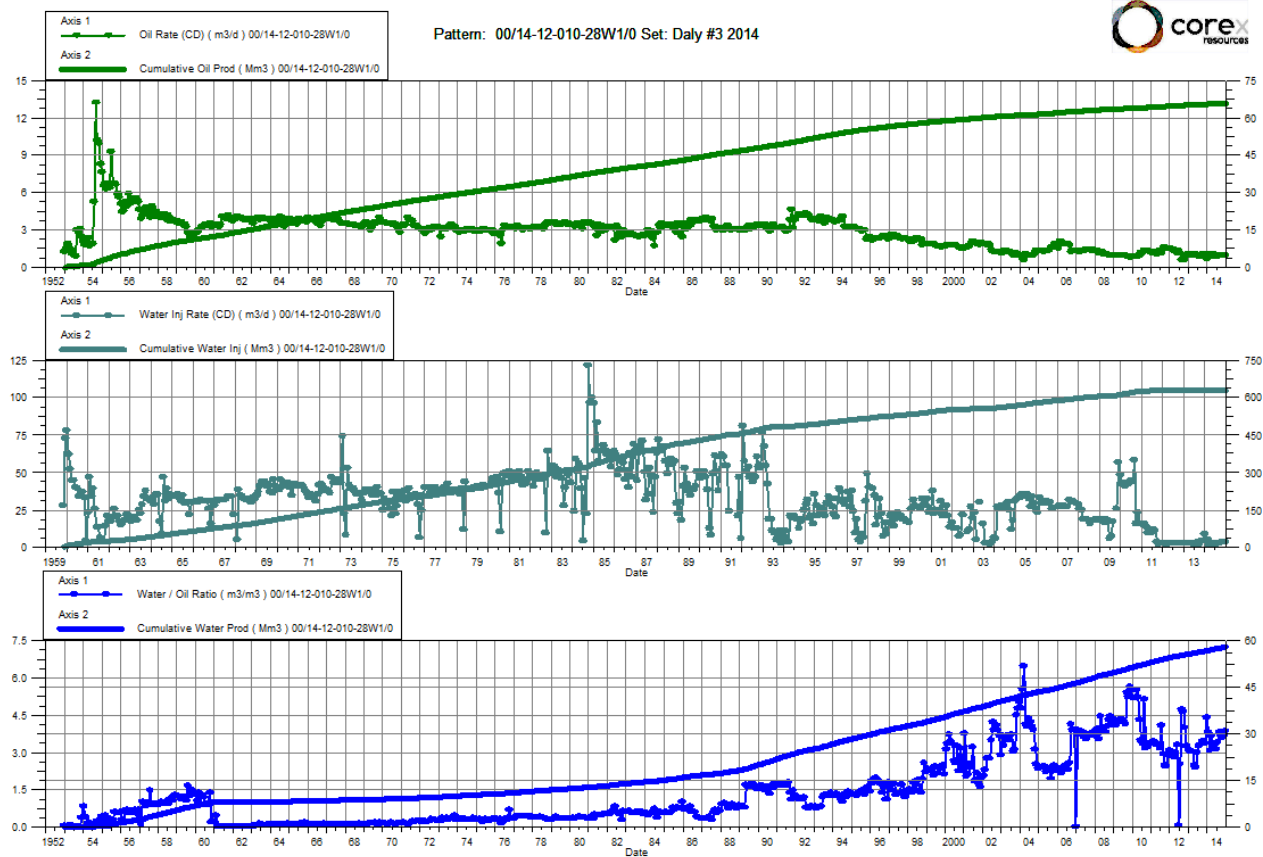


Daly Unit No. 3

Pattern P-10 – 00/14-12-010-28W1/00

P-10 – B0/14-12-010-28W1/00

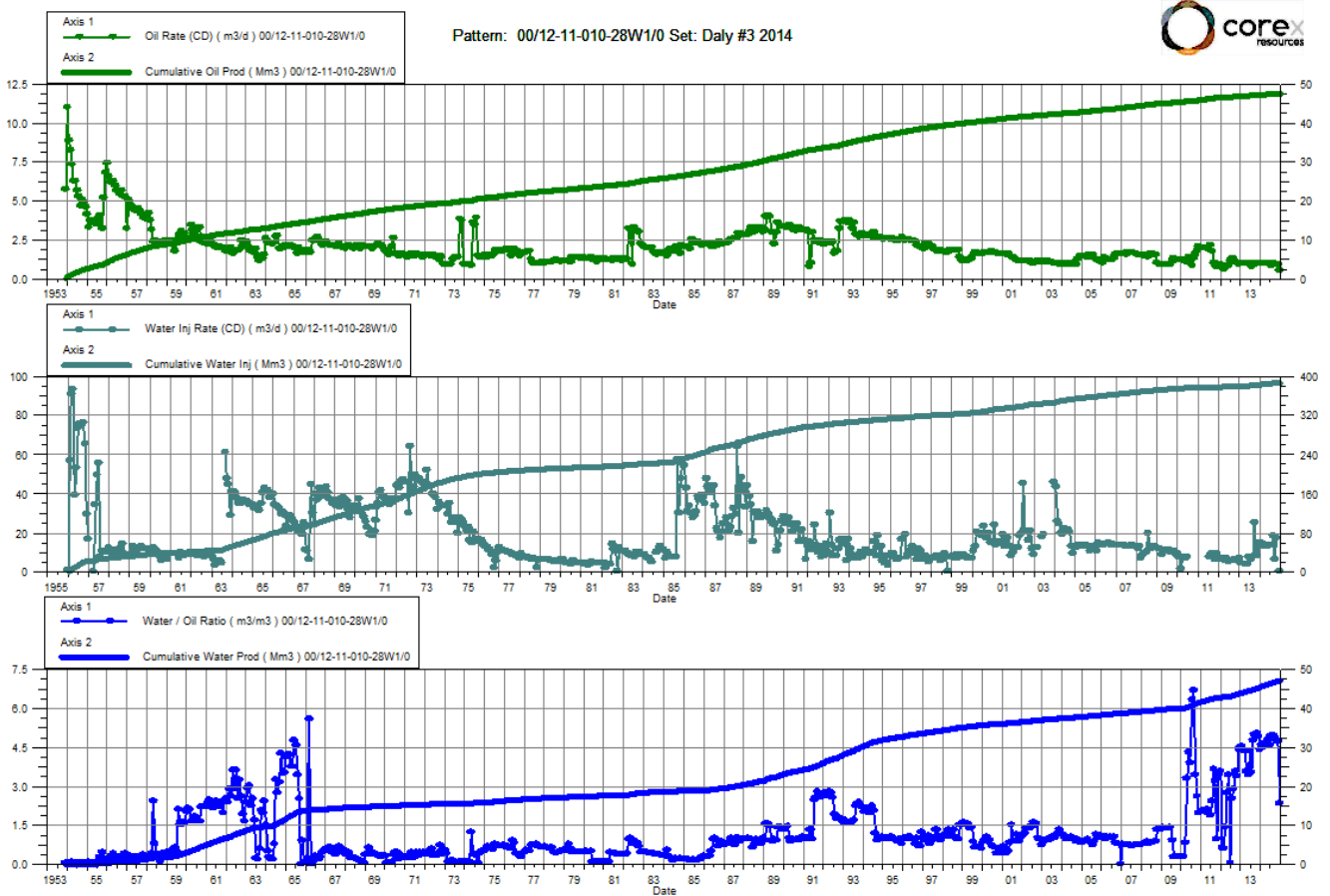
Date	Oil Rate (CD) m3/d	Cum Oil Prod Mm3	Water Rate (CD) m3/d	Cum Water Prod Mm3	Water Inj Rate (CD) m3/d	Cum Water Inj Mm3	Water Oil Ratio m3/m3	Voidage Replacement Ratio	Cum Voidage Replacemt Ratio	Water Inj Pressure kPa	Water Inj Pressure kPa
1/31/2014	0.83	65.57	3.16	56.89	3.97	630.45	3.82	0.99	5.10	7,000	7,300
2/28/2014	1.06	65.60	3.25	56.98	4.96	630.59	3.08	1.15	5.09	7,000	7,300
3/31/2014	0.90	65.63	3.29	57.08	0.80	630.61	3.66	0.19	5.09	7,000	7,300
4/30/2014	1.04	65.66	3.33	57.18	2.13	630.68	3.21	0.49	5.08	7,000	7,300
5/31/2014	1.03	65.69	3.39	57.29	2.23	630.75	3.28	0.50	5.08	7,000	7,300
6/30/2014	1.02	65.72	3.19	57.38	2.38	630.82	3.14	0.56	5.07	7,000	7,300
7/31/2014	0.88	65.75	2.99	57.48	1.93	630.88	3.39	0.50	5.07	7,000	7,300
8/31/2014	0.97	65.78	3.69	57.59	2.64	630.96	3.81	0.56	5.06	7,000	7,300
9/30/2014	0.99	65.81	3.65	57.70	2.43	631.03	3.69	0.52	5.06	6,963	7,257
10/31/2014	0.98	65.84	3.51	57.81	3.62	631.14	3.57	0.80	5.05	5,895	6,000
11/30/2014	0.99	65.87	3.64	57.92	3.72	631.25	3.67	0.80	5.05	5,735	6,010
12/31/2014	0.96	65.90	3.71	58.03	3.62	631.37	3.84	0.77	5.04	5,000	6,000



Daly Unit No. 3

Pattern P-11 - 00/12-11-010-28W1/00

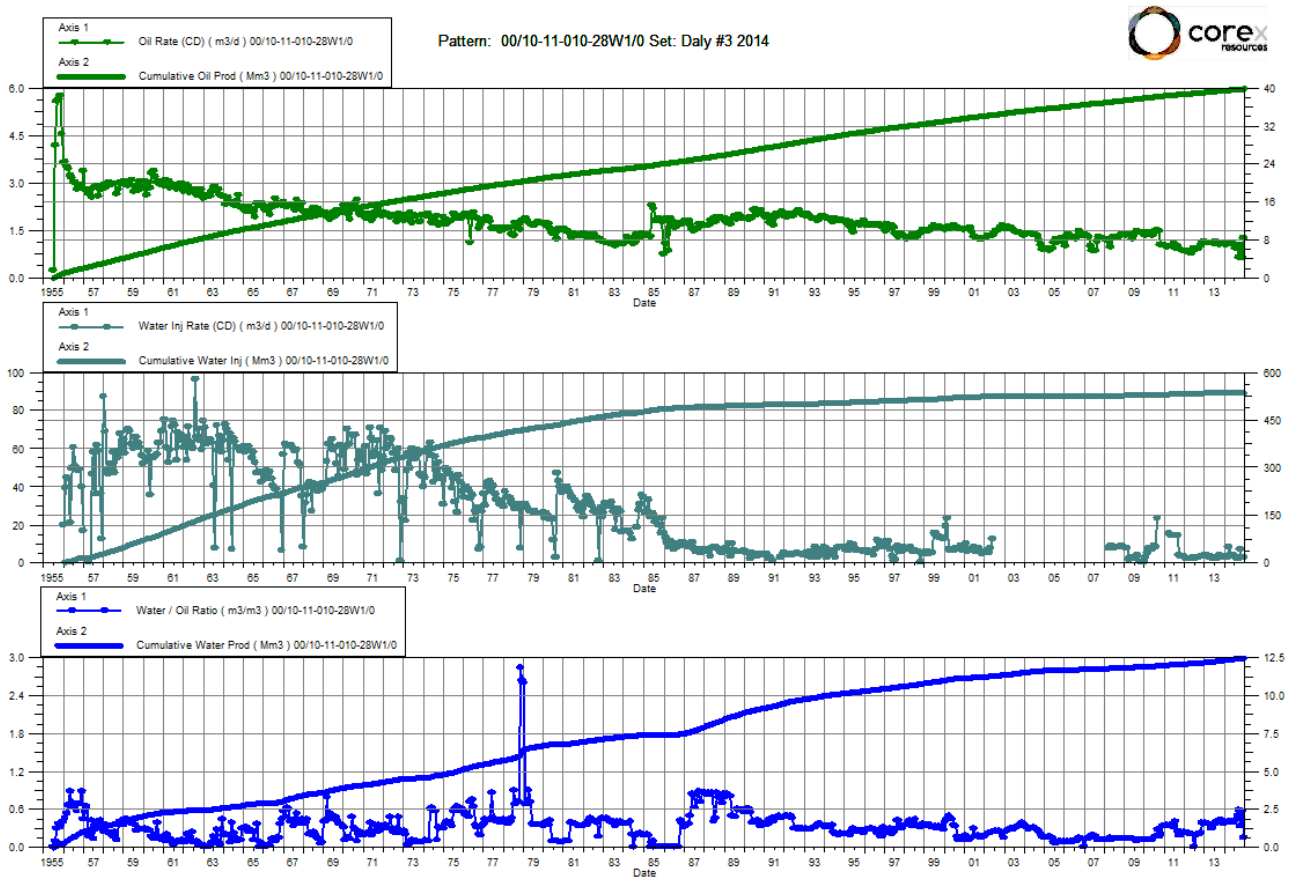
Date	Oil Rate (CD) m3/d	Cum Oil Prod Mm3	Water Rate (CD) m3/d	Cum Water Prod Mm3	Water Inj Rate (CD) m3/d	Cum Water Inj Mm3	Water Oil Ratio m3/m3	Voidage Replacement Ratio	Cum Voidage Replacemt Ratio	Water Inj Pressure kPa
1/31/2014	1.01	47.31	4.65	45.61	14.97	383.37	4.59	2.64	4.09	6,800
2/28/2014	1.06	47.34	4.73	45.74	14.29	383.77	4.48	2.46	4.08	6,800
3/31/2014	1.03	47.37	4.82	45.89	12.83	384.16	4.69	2.19	4.08	6,800
4/30/2014	1.03	47.40	4.84	46.04	12.99	384.55	4.70	2.21	4.08	6,800
5/31/2014	1.03	47.43	4.93	46.19	12.88	384.95	4.79	2.16	4.07	6,800
6/30/2014	1.01	47.46	4.64	46.33	13.53	385.36	4.59	2.38	4.07	6,800
7/31/2014	0.88	47.49	4.35	46.46	13.97	385.79	4.96	2.67	4.07	6,800
8/31/2014	1.02	47.52	5.01	46.62	18.72	386.37	4.93	3.10	4.07	6,800
9/30/2014	0.99	47.55	4.81	46.76	6.23	386.56	4.87	1.07	4.06	6,780
10/31/2014	0.98	47.58	4.63	46.91	17.30	387.10	4.72	3.07	4.06	6,182
11/30/2014	0.99	47.61	4.68	47.05		387.10	4.74		4.05	5,640
12/31/2014	0.57	47.63	1.35	47.09	0.01	387.10	2.35	0.01	4.05	5,640



Daly Unit No. 3

Pattern P-12 - 00/10-11-010-28W1/00

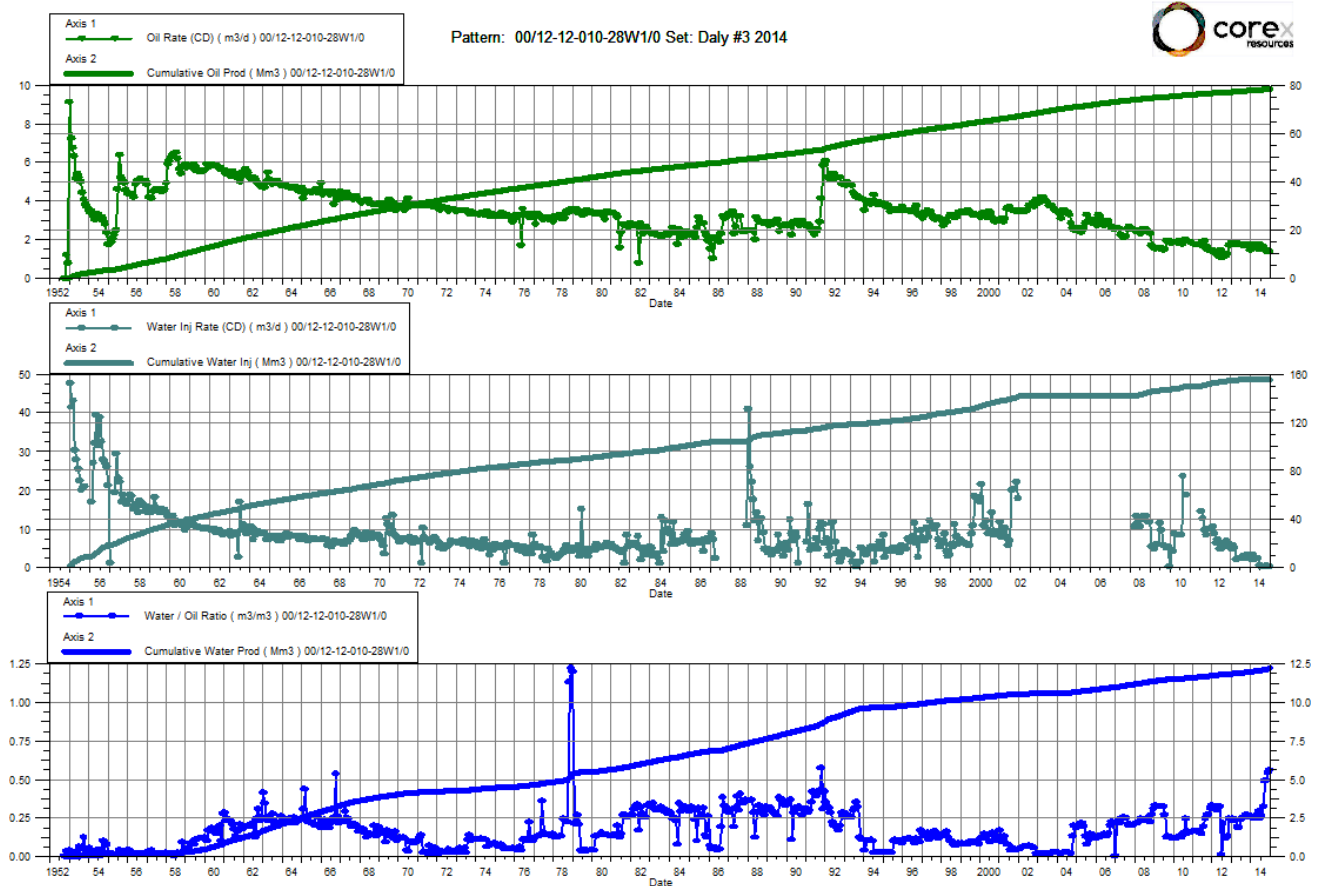
Date	Oil Rate (CD) m3/d	Cum Oil Prod Mm3	Water Rate (CD) m3/d	Cum Water Prod Mm3	Water Inj Rate (CD) m3/d	Cum Water Inj Mm3	Water Oil Ratio m3/m3	Voidage Replacement Ratio	Cum Voidage Replacemt Ratio	Water Inj Pressure kPa
1/31/2014	1.07	39.54	0.42	12.33	3.32	535.64	0.39	2.21	10.18	7,000
2/28/2014	1.12	39.57	0.42	12.35	2.76	535.72	0.38	1.77	10.17	7,000
3/31/2014	1.08	39.60	0.43	12.36	7.90	535.97	0.40	5.15	10.17	7,000
4/30/2014	1.09	39.64	0.43	12.37	3.83	536.08	0.40	2.48	10.16	7,000
5/31/2014	1.09	39.67	0.44	12.39	3.18	536.18	0.40	2.06	10.15	7,000
6/30/2014	1.07	39.70	0.41	12.40	3.64	536.29	0.39	2.42	10.15	7,000
7/31/2014	0.93	39.73	0.39	12.41	2.95	536.38	0.42	2.21	10.14	7,000
8/31/2014	0.96	39.76	0.47	12.42	2.06	536.44	0.49	1.43	10.13	7,000
9/30/2014	0.65	39.78	0.38	12.44	2.27	536.51	0.58	2.19	10.13	6,960
10/31/2014	1.06	39.81	0.35	12.45	7.03	536.73	0.33	4.92	10.12	5,800
11/30/2014	0.63	39.83	0.36	12.46		536.73	0.56		10.12	5,800
12/31/2014	1.26	39.87	0.18	12.46	2.61	536.81	0.15	1.78	10.11	5,800



Daly Unit No. 3

Pattern P-13 - 00/12-12-010-28W1/00

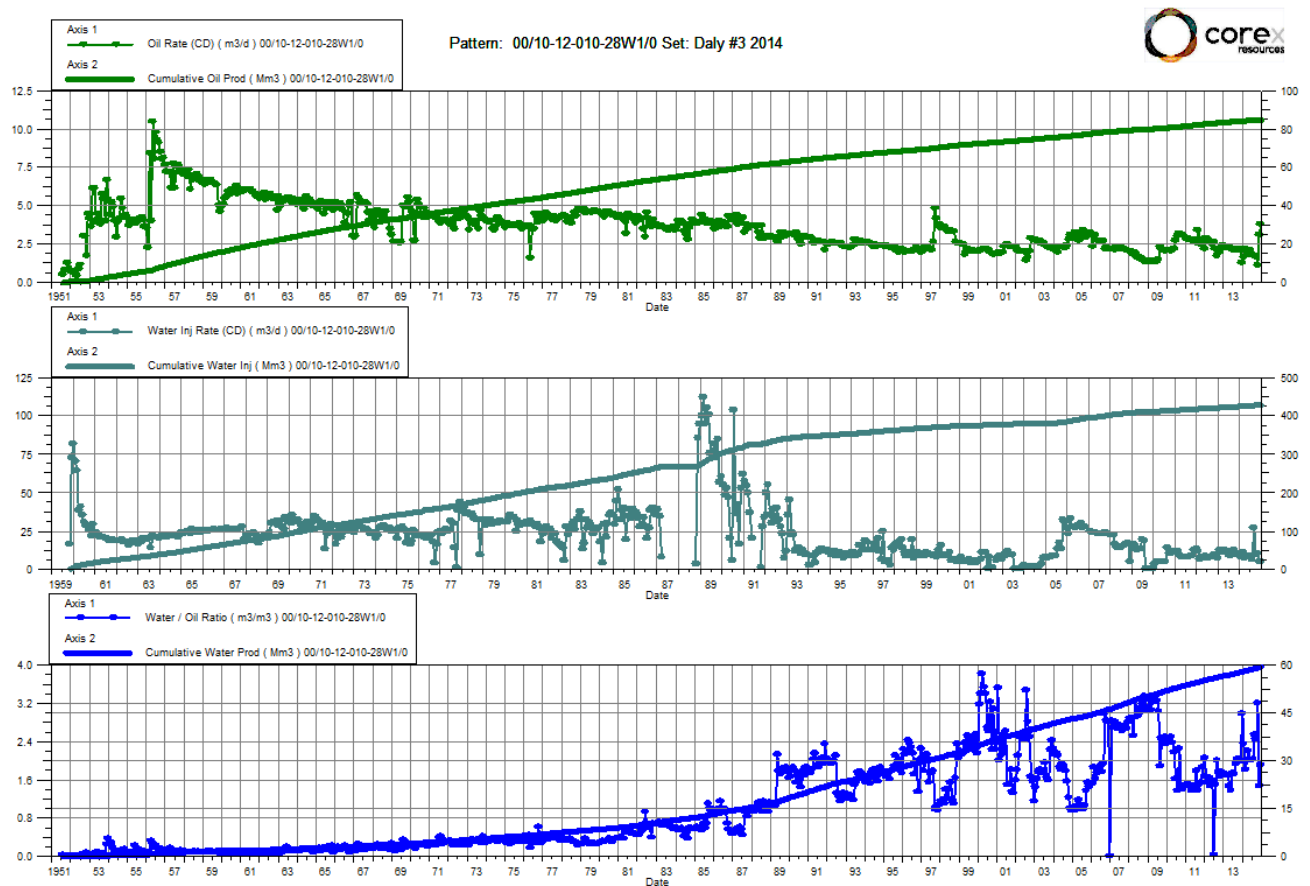
Date	Oil Rate (CD) m3/d	Cum Oil Prod Mm3	Water Rate (CD) m3/d	Cum Water Prod Mm3	Water Inj Rate (CD) m3/d	Cum Water Inj Mm3	Water Oil Ratio m3/m3	Voidage Replacement Ratio	Cum Voidage Replacemt Ratio	Water Inj Pressure kPa
1/31/2014	1.52	77.94	0.39	12.01	1.90	155.86	0.26	0.98	1.70	7,000
2/28/2014	1.77	77.99	0.43	12.03	3.23	155.95	0.24	1.44	1.70	7,000
3/31/2014	1.59	78.04	0.42	12.04	2.10	156.01	0.26	1.03	1.70	7,000
4/30/2014	1.73	78.09	0.44	12.05	2.15	156.08	0.26	0.97	1.70	7,000
5/31/2014	1.48	78.14	0.44	12.07	2.13	156.14	0.29	1.09	1.70	7,000
6/30/2014	1.73	78.19	0.43	12.08	0.36	156.15	0.25	0.17	1.70	7,000
7/31/2014	1.57	78.24	0.40	12.09	0.15	156.16	0.26	0.08	1.70	7,000
8/31/2014	1.63	78.29	0.53	12.11	0.07	156.16	0.32	0.03	1.70	7,000
9/30/2014	1.43	78.33	0.70	12.13	0.14	156.16	0.49	0.06	1.70	6,963
10/31/2014	1.38	78.37	0.68	12.15	0.32	156.17	0.49	0.15	1.70	5,900
11/30/2014	1.44	78.42	0.78	12.17		156.17	0.54		1.70	5,900
12/31/2014	1.40	78.46	0.79	12.20	0.14	156.18	0.56	0.06	1.70	5,900



Daly Unit No. 3

Pattern P-14 - 00/10-12-010-28W1/00

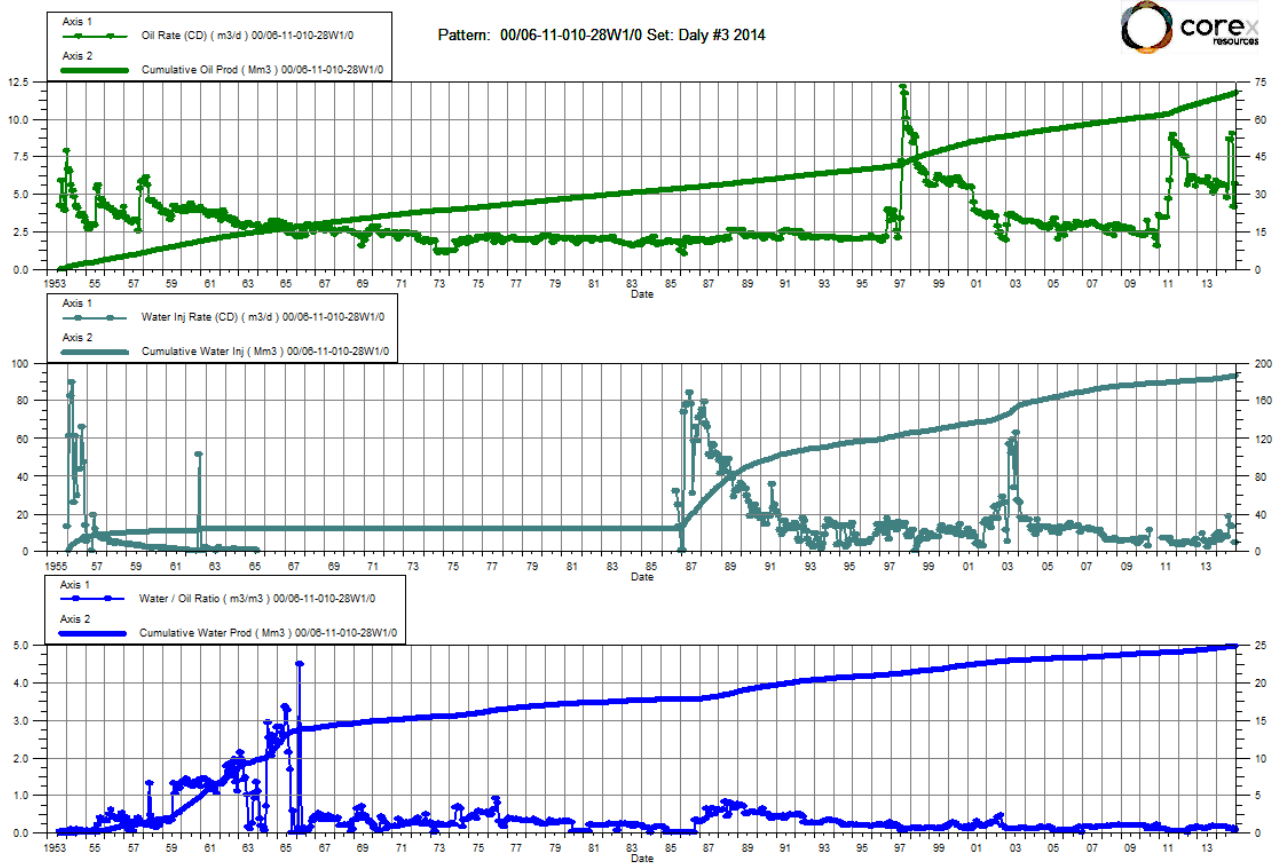
Date	Oil Rate (CD) m3/d	Cum Oil Prod Mm3	Water Rate (CD) m3/d	Cum Water Prod Mm3	Water Inj Rate (CD) m3/d	Cum Water Inj Mm3	Water Oil Ratio m3/m3	Voidage Replacement Ratio	Cum Voidage Replacemt Ratio	Water Inj Pressure kPa
1/31/2014	1.64	84.27	3.85	58.05	7.98	424.77	2.34	1.44	2.95	6,900
2/28/2014	2.21	84.33	4.00	58.17	11.24	425.08	1.81	1.80	2.95	6,900
3/31/2014	2.03	84.39	4.06	58.29	7.04	425.30	2.00	1.15	2.95	6,900
4/30/2014	1.84	84.45	4.04	58.41	8.04	425.54	2.19	1.36	2.95	6,900
5/31/2014	2.08	84.51	4.15	58.54	8.39	425.80	2.00	1.34	2.94	6,900
6/30/2014	1.91	84.57	3.84	58.66	8.41	426.05	2.01	1.45	2.94	6,900
7/31/2014	1.81	84.62	3.67	58.77	6.71	426.26	2.02	1.22	2.94	6,900
8/31/2014	1.75	84.68	4.48	58.91	27.25	427.11	2.55	4.35	2.94	6,900
9/30/2014	1.63	84.73	3.98	59.03	9.63	427.39	2.45	1.71	2.94	6,863
10/31/2014	1.14	84.76	3.63	59.14	10.24	427.71	3.19	2.14	2.94	5,800
11/30/2014	3.09	84.86	4.55	59.28	4.75	427.85	1.47	0.62	2.94	5,798
12/31/2014	3.81	84.97	7.25	59.50	4.51	427.99	1.90	0.41	2.93	5,600



Daly Unit No. 3

Pattern P-15 - 00/06-11-010-28W1/00

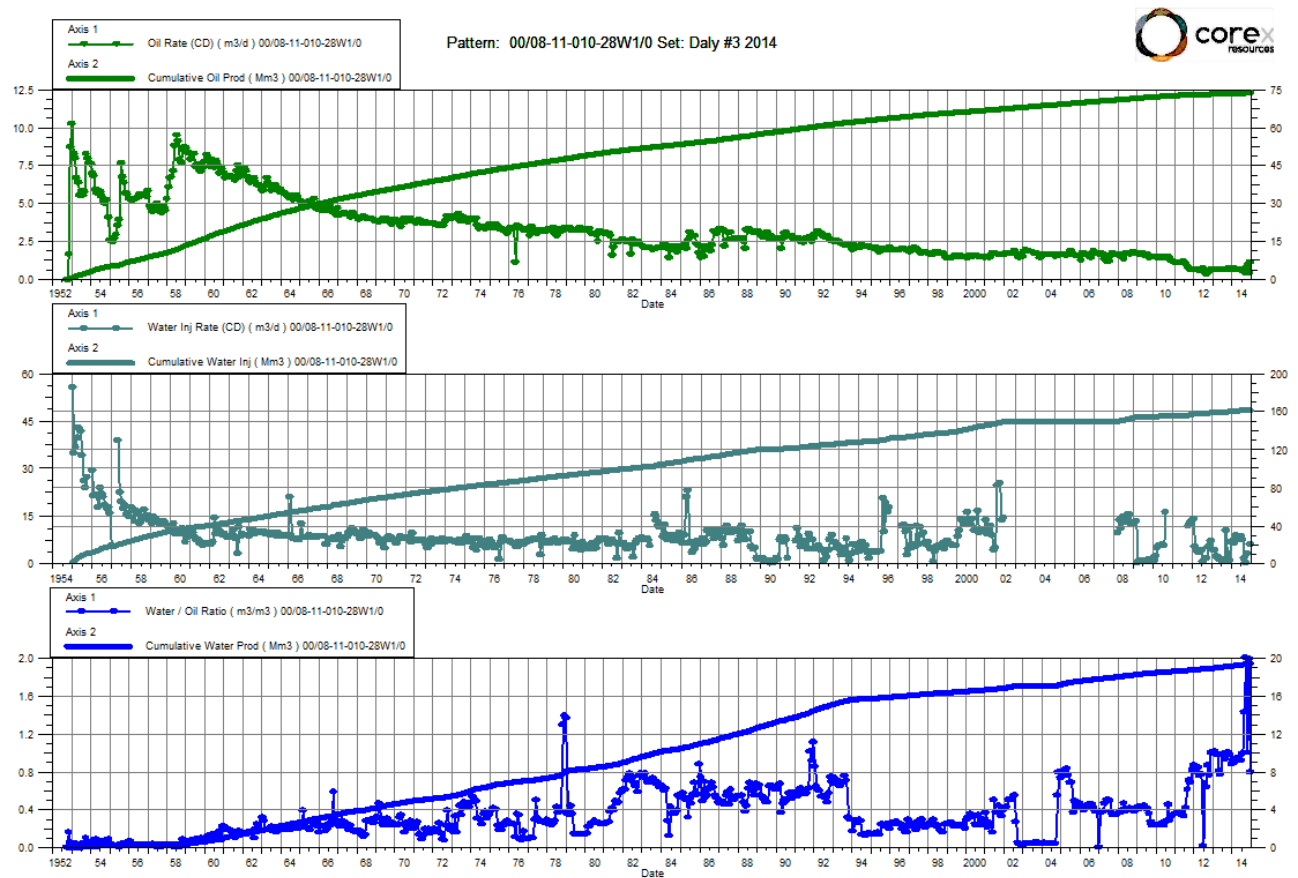
Date	Oil Rate (CD) m3/d	Cum Oil Prod Mm3	Water Rate (CD) m3/d	Cum Water Prod Mm3	Water Inj Rate (CD) m3/d	Cum Water Inj Mm3	Water Oil Ratio m3/m3	Voidage Replacement Ratio	Cum Voidage Replacemt Ratio	Water Inj Pressure kPa
1/31/2014	5.55	68.57	0.83	24.69	6.83	183.79	0.15	1.05	1.94	6,400
2/28/2014	5.80	68.73	0.85	24.71	9.82	184.06	0.15	1.45	1.94	6,400
3/31/2014	5.63	68.90	0.86	24.74	5.92	184.24	0.15	0.90	1.94	6,400
4/30/2014	5.67	69.07	0.86	24.76	7.21	184.46	0.15	1.08	1.94	6,400
5/31/2014	5.66	69.25	0.88	24.79	7.44	184.69	0.16	1.12	1.94	6,400
6/30/2014	5.59	69.42	0.83	24.82	7.97	184.93	0.15	1.22	1.94	6,400
7/31/2014	4.82	69.57	0.78	24.84	7.42	185.16	0.16	1.30	1.93	6,400
8/31/2014	8.68	69.84	0.91	24.87	18.46	185.73	0.11	1.89	1.93	6,400
9/30/2014	8.69	70.10	0.92	24.90	13.92	186.15	0.11	1.42	1.93	6,377
10/31/2014	9.06	70.38	0.89	24.92	12.92	186.55	0.10	1.28	1.93	5,697
11/30/2014	4.15	70.50	0.58	24.94		186.55	0.14		1.93	5,600
12/31/2014	5.66	70.68	0.36	24.95	4.61	186.69	0.06	0.75	1.93	5,600



Daly Unit No. 3

Pattern P-16 - 00/08-11-010-28W1/00

Date	Oil Rate (CD) m3/d	Cum Oil Prod Mm3	Water Rate (CD) m3/d	Cum Water Prod Mm3	Water Inj Rate (CD) m3/d	Cum Water Inj Mm3	Water Oil Ratio m3/m3	Voidage Replacement Ratio	Cum Voidage Replacemt Ratio	Water Inj Pressure kPa
1/31/2014	0.68	73.66	0.62	19.23	7.22	160.32	0.92	5.51	1.70	7,300
2/28/2014	0.71	73.68	0.63	19.25	6.31	160.49	0.89	4.66	1.70	7,300
3/31/2014	0.69	73.70	0.65	19.27	8.82	160.77	0.94	6.55	1.70	7,300
4/30/2014	0.69	73.72	0.65	19.28	7.43	160.99	0.94	5.50	1.71	7,300
5/31/2014	0.69	73.74	0.66	19.30	8.01	161.24	0.96	5.87	1.71	7,300
6/30/2014	0.68	73.76	0.62	19.32	8.41	161.49	0.91	6.39	1.71	7,300
7/31/2014	0.59	73.78	0.58	19.34	7.56	161.72	0.99	6.39	1.71	7,300
8/31/2014	0.58	73.80	0.83	19.37	1.76	161.78	1.43	1.24	1.71	7,300
9/30/2014	0.46	73.81	0.91	19.39	0.02	161.78	2.00	0.01	1.71	7,257
10/31/2014	0.87	73.84	0.87	19.42	2.95	161.87	1.00	1.69	1.71	6,000
11/30/2014	0.44	73.85	0.88	19.45		161.87	1.99		1.71	6,000
12/31/2014	1.11	73.89	0.88	19.48	6.02	162.06	0.79	2.99	1.71	6,000

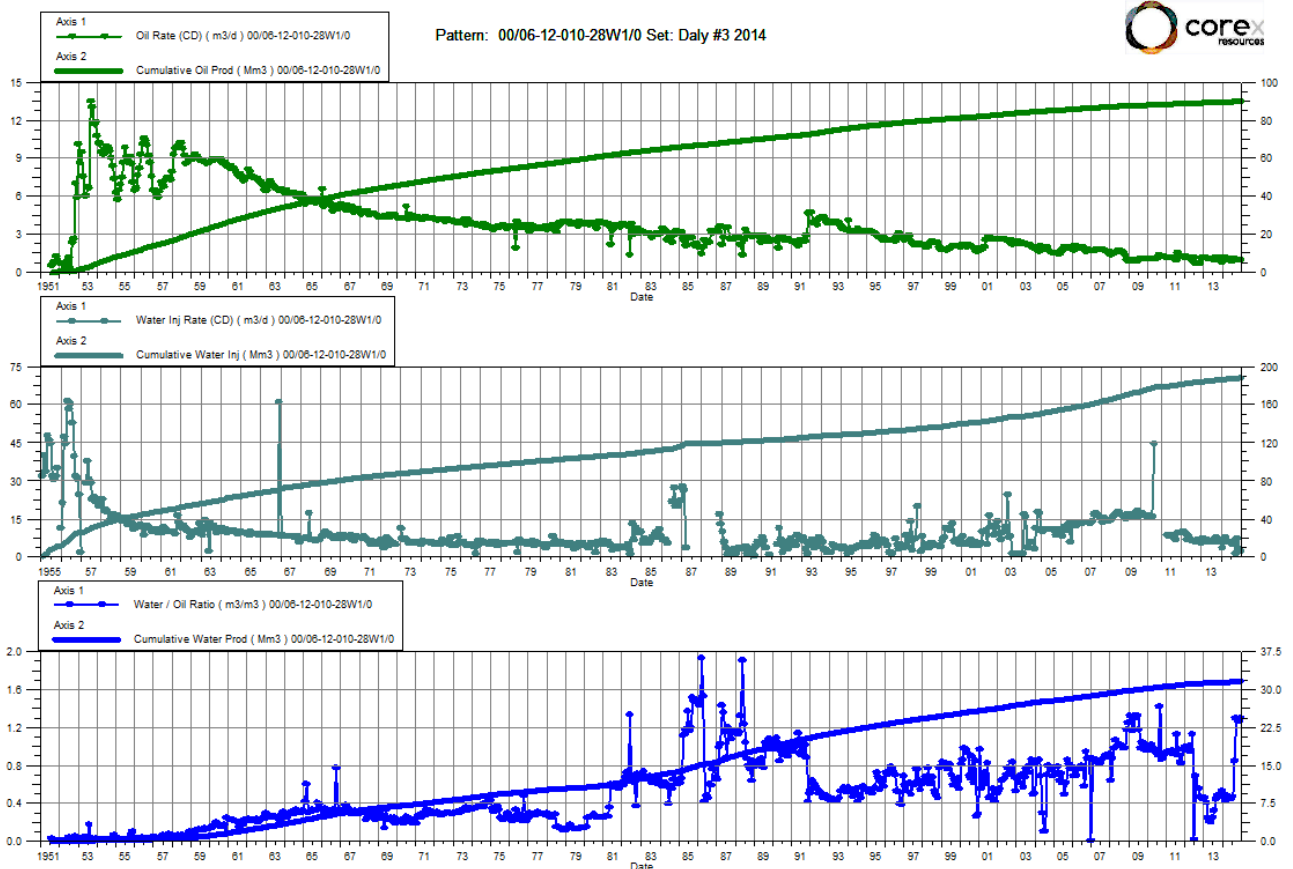


Daly Unit No. 3

Pattern P-17 – 00/06-12-010-28W1/00

P-17 – A0/05-12-010-28W1/00

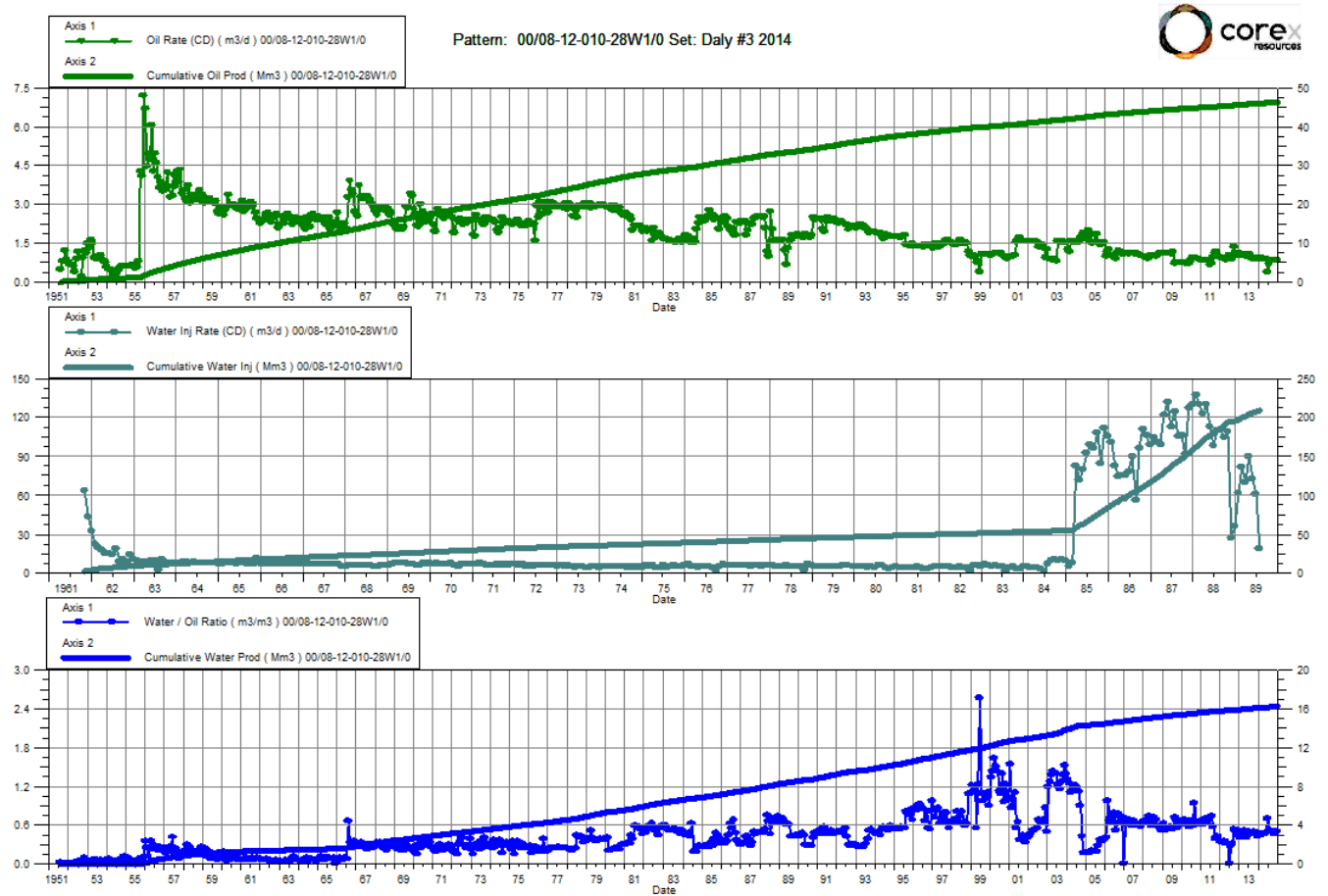
Date	Oil Rate (CD) m3/d	Cum Oil Prod Mm3	Water Rate (CD) m3/d	Cum Water Prod Mm3	Water Inj Rate (CD) m3/d	Cum Water Inj Mm3	Water Oil Ratio m3/m3	Voidage Replacement Ratio	Cum Voidage Replacemt Ratio	Water Inj Pressure kPa	Water Inj Pressure kPa
1/31/2014	0.93	89.69	0.45	31.43	3.22	186.36	0.49	2.30	1.52	6,700	7,200
2/28/2014	1.16	89.73	0.49	31.45	6.59	186.54	0.42	3.95	1.52	6,700	7,200
3/31/2014	1.00	89.76	0.48	31.46	7.49	186.78	0.48	4.99	1.52	6,700	7,200
4/30/2014	1.12	89.79	0.50	31.48	5.71	186.95	0.44	3.49	1.52	6,700	7,200
5/31/2014	1.11	89.82	0.50	31.49	5.66	187.12	0.45	3.45	1.52	6,700	7,200
6/30/2014	0.89	89.85	0.39	31.50	5.76	187.30	0.43	4.43	1.52	6,700	7,200
7/31/2014	0.92	89.88	0.43	31.52	4.56	187.44	0.47	3.32	1.52	6,700	7,200
8/31/2014	1.09	89.91	0.91	31.54	5.96	187.62	0.84	2.95	1.52	6,700	7,200
9/30/2014	1.00	89.94	1.30	31.58	0.90	187.65	1.30	0.39	1.52	6,673	7,157
10/31/2014	0.99	89.97	1.25	31.62	7.10	187.87	1.27	3.15	1.52	5,893	5,903
11/30/2014	1.01	90.00	1.27	31.66	2.97	187.96	1.26	1.30	1.52	5,687	5,993
12/31/2014	0.98	90.03	1.27	31.70	1.93	188.02	1.30	0.85	1.52	5,687	5,800



Daly Unit No. 3

Pattern P-18 - 00/08-12-010-28W1/00

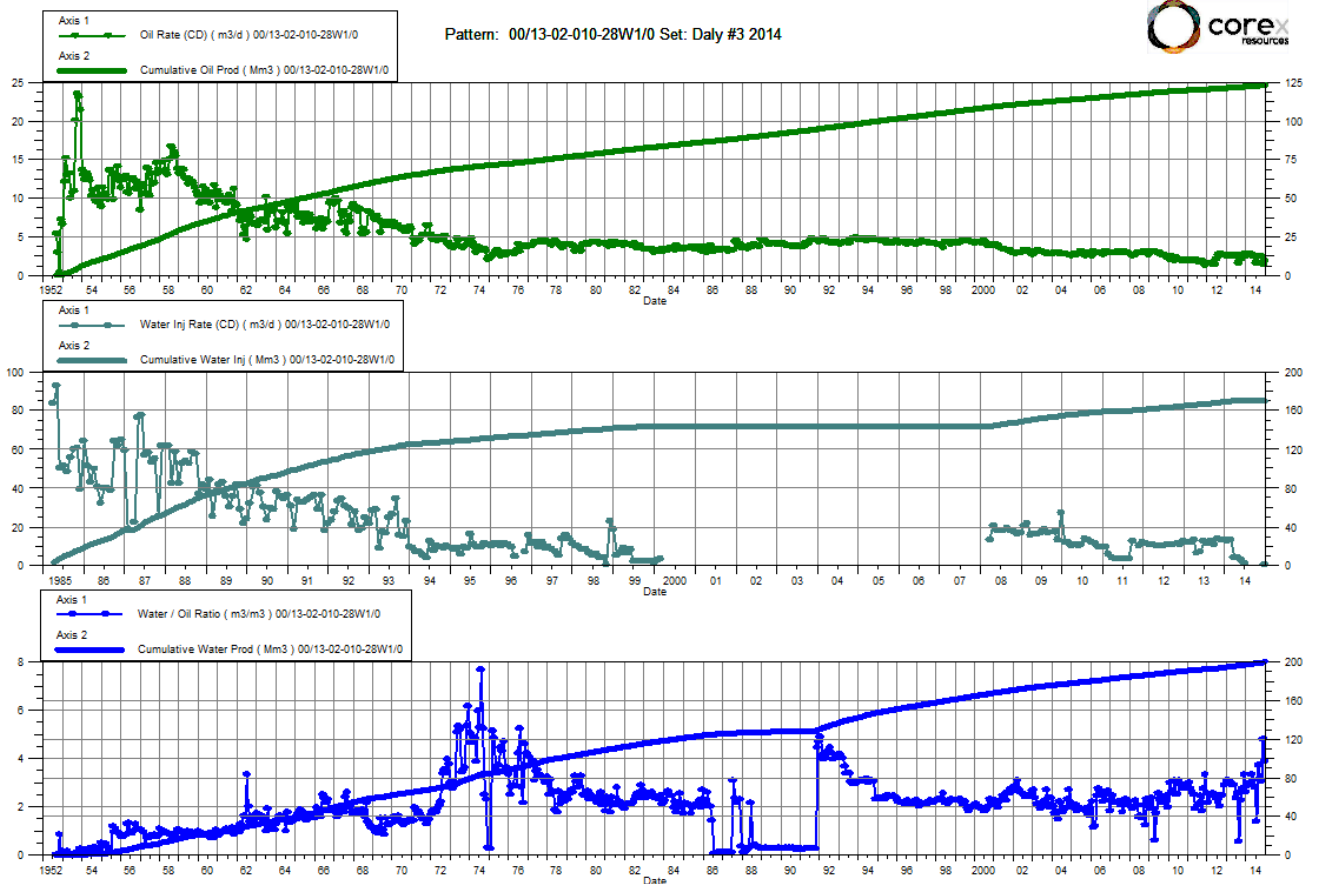
Date	Oil Rate (CD) m3/d	Cum Oil Prod Mm3	Water Rate (CD) m3/d	Cum Water Prod Mm3	Water Inj Rate (CD) m3/d	Cum Water Inj Mm3	Water Oil Ratio m3/m3	Voidage Replacement Ratio	Cum Voidage Replacemt Ratio	Water Inj Pressure kPa
1/31/2014	0.90	46.05	0.41	16.11		209.39	0.46		3.32	--
2/28/2014	0.94	46.08	0.42	16.12		209.39	0.45		3.32	--
3/31/2014	0.91	46.11	0.43	16.13		209.39	0.47		3.32	--
4/30/2014	0.90	46.13	0.42	16.15		209.39	0.46		3.32	--
5/31/2014	0.88	46.16	0.42	16.16		209.39	0.48		3.31	--
6/30/2014	0.38	46.17	0.27	16.17		209.39	0.70		3.31	--
7/31/2014	0.70	46.19	0.36	16.18		209.39	0.52		3.31	--
8/31/2014	0.85	46.22	0.44	16.19		209.39	0.51		3.31	--
9/30/2014	0.88	46.25	0.43	16.21		209.39	0.49		3.31	--
10/31/2014	0.84	46.27	0.39	16.22		209.39	0.46		3.30	--
11/30/2014	0.87	46.30	0.41	16.23		209.39	0.47		3.30	--
12/31/2014	0.85	46.32	0.42	16.24		209.39	0.49		3.30	--



Daly Unit No. 3

Pattern P-19 - 00/13-02-010-28W1/00

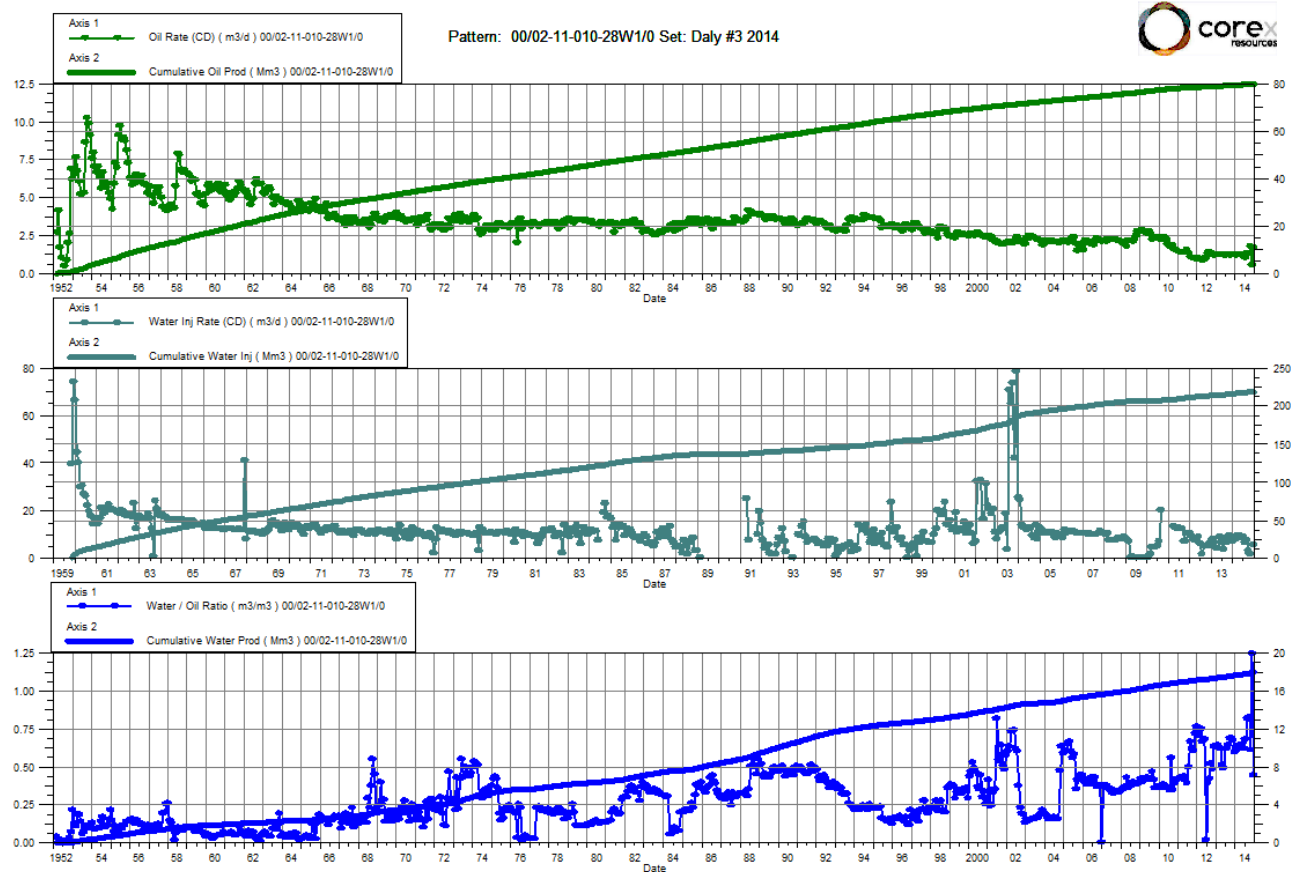
Date	Oil Rate (CD) m3/d	Cum Oil Prod Mm3	Water Rate (CD) m3/d	Cum Water Prod Mm3	Water Inj Rate (CD) m3/d	Cum Water Inj Mm3	Water Oil Ratio m3/m3	Voidage Replacement Ratio	Cum Voidage Replacemt Ratio	Water Inj Pressure kPa
1/31/2014	2.57	122.45	7.27	197.35	12.41	169.29	2.83	1.25	0.53	6,700
2/28/2014	2.65	122.52	7.75	197.57	13.15	169.66	2.92	1.26	0.53	6,700
3/31/2014	2.79	122.61	8.36	197.82	4.07	169.79	3.00	0.36	0.53	6,700
4/30/2014	2.61	122.68	8.67	198.09	4.16	169.91	3.33	0.37	0.53	6,700
5/31/2014	2.64	122.77	8.18	198.34	2.89	170.00	3.10	0.27	0.53	6,700
6/30/2014	2.45	122.84	6.81	198.54	1.10	170.03	2.78	0.12	0.53	6,700
7/31/2014	1.67	122.89	2.30	198.61		170.03	1.37		0.53	6,700
8/31/2014	2.52	122.97	9.33	198.90		170.03	3.70		0.52	6,700
9/30/2014	2.55	123.05	8.01	199.14		170.03	3.15		0.52	6,700
10/31/2014	2.55	123.12	7.70	199.38		170.03	3.02		0.52	6,554
11/30/2014	1.47	123.17	7.03	199.59		170.03	4.78		0.52	2,180
12/31/2014	2.01	123.23	7.72	199.83	0.11	170.04	3.84	0.01	0.52	2,180



Daly Unit No. 3

Pattern P-20 - 00/02-11-010-28W1/00

Date	Oil Rate (CD) m3/d	Cum Oil Prod Mm3	Water Rate (CD) m3/d	Cum Water Prod Mm3	Water Inj Rate (CD) m3/d	Cum Water Inj Mm3	Water Oil Ratio m3/m3	Voidage Replacement Ratio	Cum Voidage Replacemt Ratio	Water Inj Pressure kPa
1/31/2014	1.23	79.56	0.77	17.68	7.42	216.48	0.63	3.67	2.19	7,400
2/28/2014	1.29	79.60	0.78	17.70	7.80	216.69	0.61	3.73	2.19	7,400
3/31/2014	1.25	79.64	0.80	17.73	9.62	216.99	0.64	4.65	2.19	7,400
4/30/2014	1.26	79.67	0.80	17.75	9.60	217.28	0.64	4.61	2.20	7,400
5/31/2014	1.25	79.71	0.82	17.78	8.52	217.55	0.65	4.08	2.20	7,400
6/30/2014	1.24	79.75	0.77	17.80	8.88	217.81	0.62	4.37	2.20	7,400
7/31/2014	1.07	79.78	0.72	17.82	6.67	218.02	0.68	3.68	2.20	7,400
8/31/2014	1.31	79.82	1.07	17.85	7.56	218.25	0.81	3.14	2.20	7,400
9/30/2014	1.38	79.87	1.14	17.89	3.24	218.35	0.83	1.27	2.20	7,323
10/31/2014	1.79	79.92	1.09	17.92	1.72	218.40	0.61	0.59	2.20	5,094
11/30/2014	0.62	79.94	0.77	17.95		218.40	1.24		2.20	4,911
12/31/2014	1.71	79.99	0.76	17.97	5.61	218.58	0.44	2.24	2.20	4,911

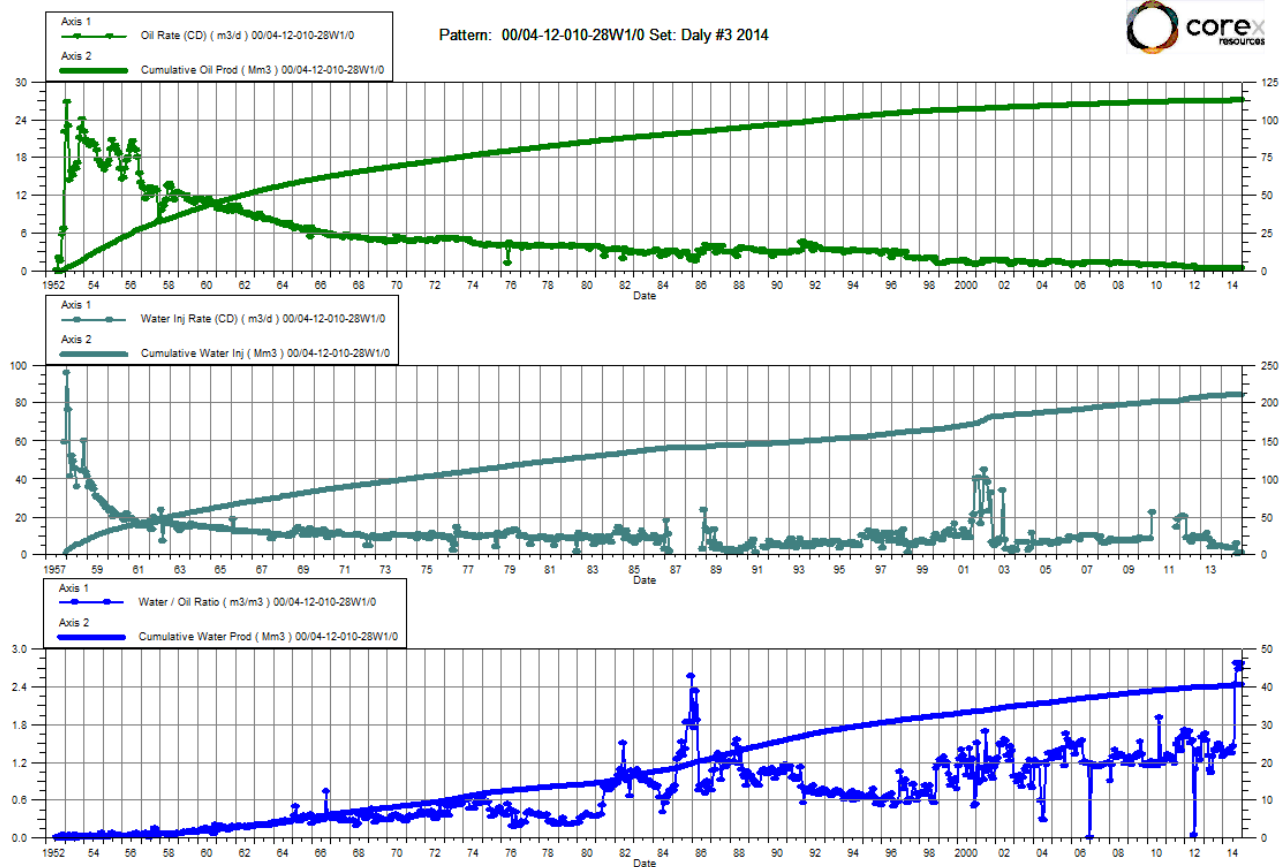


Daly Unit No. 3

Pattern P-21 - 00/04-12-010-28W1/00

P-21 – B0/05-12-010-28W1/00

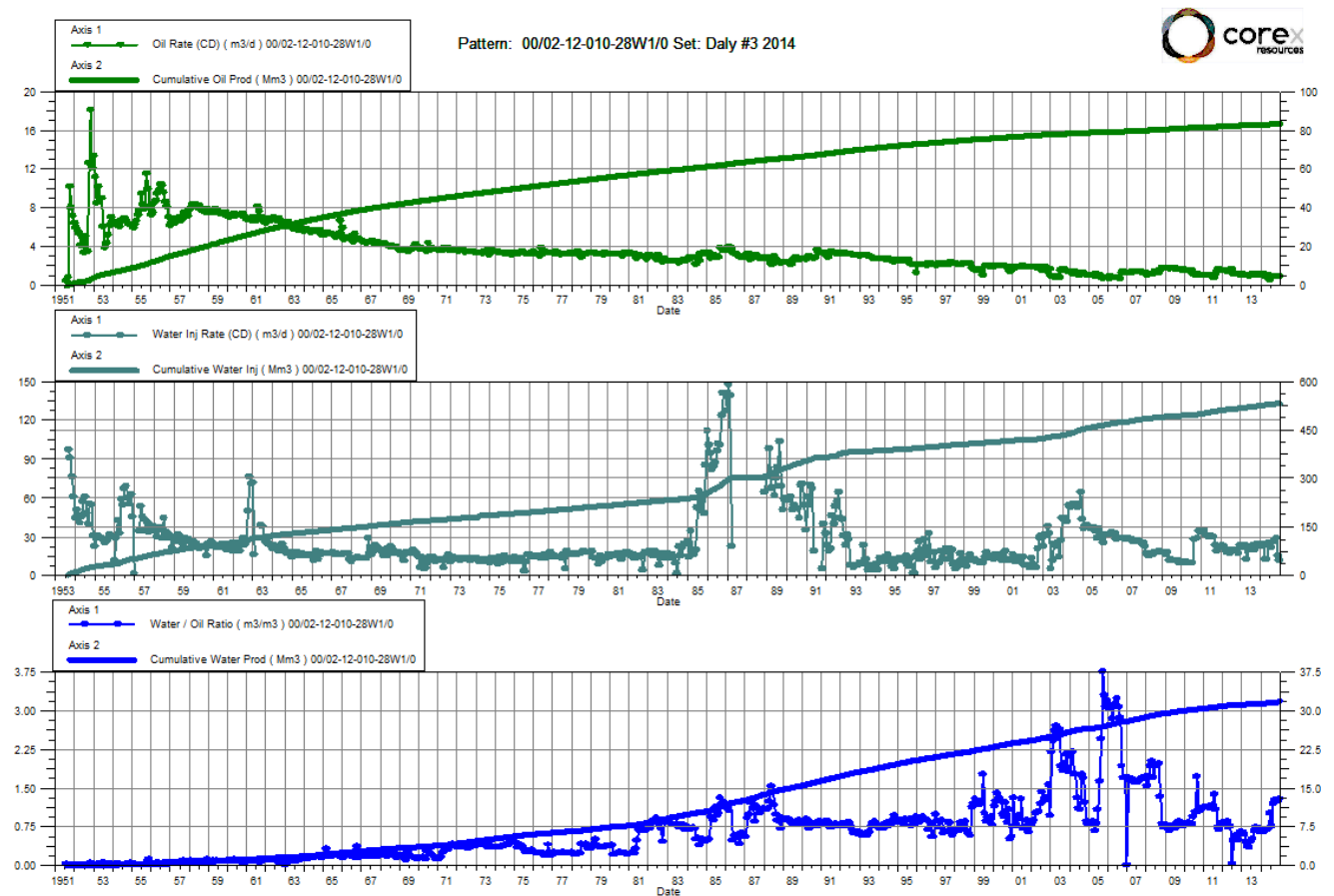
Date	Oil Rate (CD) m3/d	Cum Oil Prod Mm3	Water Rate (CD) m3/d	Cum Water Prod Mm3	Water Inj Rate (CD) m3/d	Cum Water Inj Mm3	Water Oil Ratio m3/m3	Voidage Replacement Ratio	Cum Voidage Replacemt Ratio	Water Inj Pressure kPa	Water Inj Pressure kPa
1/31/2014	0.52	113.03	0.71	40.26	3.87	210.30	1.36	3.11	1.35	7,000	7,000
2/28/2014	0.55	113.04	0.72	40.28	3.83	210.41	1.31	2.98	1.35	7,000	7,000
3/31/2014	0.53	113.06	0.74	40.30	3.89	210.53	1.38	3.03	1.35	7,000	7,000
4/30/2014	0.54	113.08	0.74	40.33	3.26	210.63	1.38	2.53	1.35	7,000	7,000
5/31/2014	0.54	113.09	0.75	40.35	3.51	210.74	1.40	2.69	1.35	7,000	7,016
6/30/2014	0.53	113.11	0.71	40.37	3.32	210.84	1.35	2.65	1.36	7,000	7,500
7/31/2014	0.46	113.12	0.67	40.39	3.14	210.93	1.46	2.77	1.36	7,000	7,500
8/31/2014	0.52	113.14	1.27	40.43	3.57	211.04	2.44	1.99	1.36	7,000	7,500
9/30/2014	0.58	113.16	1.61	40.48	5.49	211.21	2.76	2.50	1.36	6,963	7,443
10/31/2014	0.58	113.17	1.55	40.53	0.47	211.22	2.68	0.22	1.36	5,900	5,803
11/30/2014	0.58	113.19	1.56	40.57		211.22	2.68		1.36	5,900	5,900
12/31/2014	0.57	113.21	1.57	40.62	0.60	211.24	2.77	0.28	1.35	5,900	5,900



Daly Unit No. 3

Pattern P-22 - 00/02-12-010-28W1/00

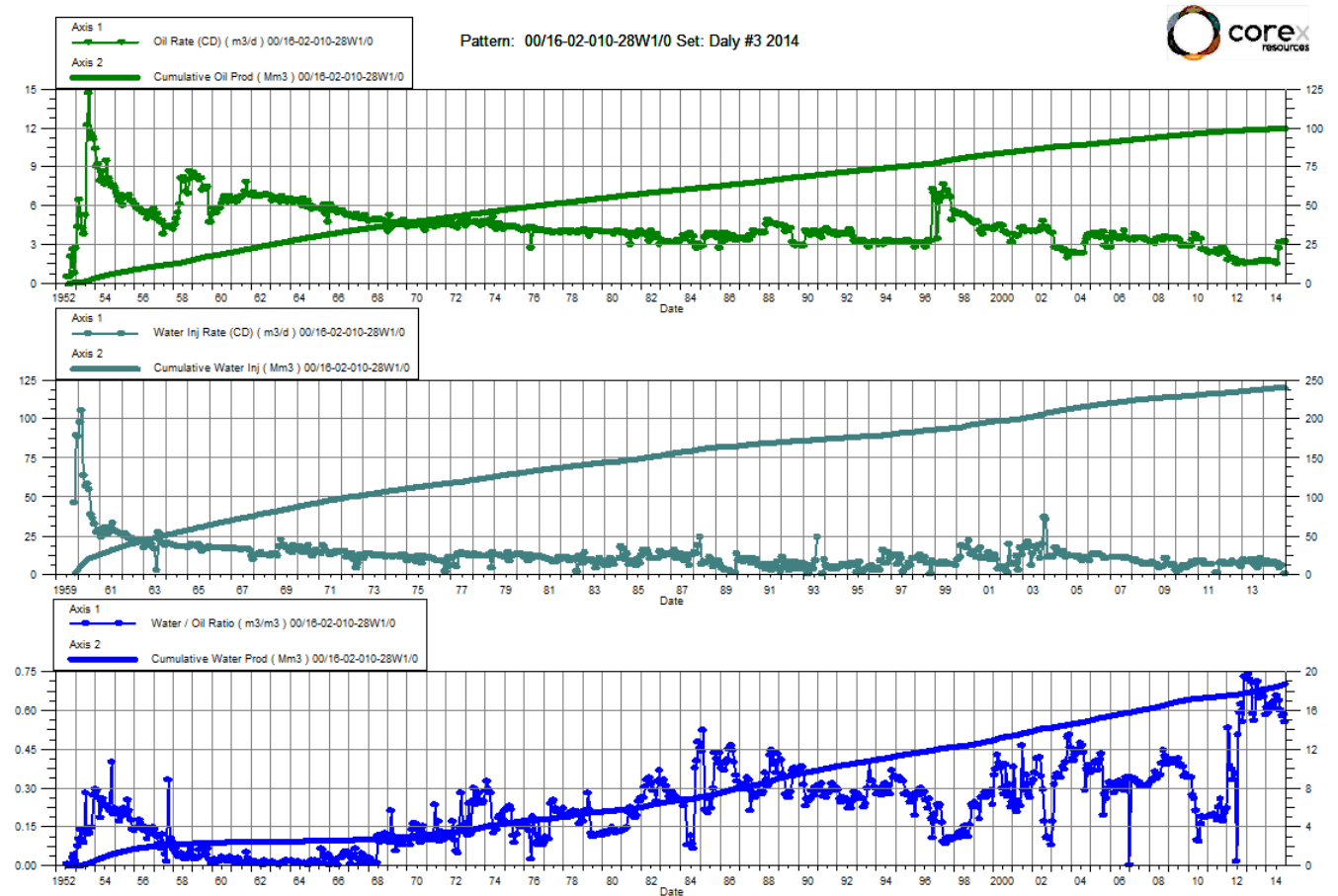
Date	Oil Rate (CD) m3/d	Cum Oil Prod Mm3	Water Rate (CD) m3/d	Cum Water Prod Mm3	Water Inj Rate (CD) m3/d	Cum Water Inj Mm3	Water Oil Ratio m3/m3	Voidage Replacement Ratio	Cum Voidage Replacemt Ratio	Water Inj Pressure kPa
1/31/2014	1.09	83.02	0.73	31.46	22.39	526.15	0.67	12.13	4.53	7,400
2/28/2014	1.14	83.05	0.74	31.48	24.14	526.83	0.65	12.66	4.54	7,400
3/31/2014	0.90	83.08	0.60	31.50	12.07	527.20	0.66	7.95	4.54	7,400
4/30/2014	1.10	83.11	0.75	31.52	11.92	527.56	0.68	6.35	4.54	7,400
5/31/2014	1.08	83.14	0.77	31.55	24.79	528.33	0.71	13.28	4.54	7,400
6/30/2014	0.58	83.16	0.59	31.57	23.42	529.03	1.02	19.89	4.55	7,400
7/31/2014	0.86	83.19	0.66	31.59	21.09	529.68	0.77	13.79	4.55	7,400
8/31/2014	0.89	83.22	1.05	31.62	26.20	530.49	1.19	13.37	4.56	7,400
9/30/2014	0.91	83.24	1.15	31.65	27.36	531.32	1.27	13.19	4.56	7,350
10/31/2014	0.89	83.27	1.10	31.69	29.03	532.22	1.24	14.43	4.57	5,890
11/30/2014	0.91	83.30	1.12	31.72	14.60	532.65	1.23	7.13	4.57	5,597
12/31/2014	0.88	83.32	1.12	31.76	11.15	533.00	1.27	5.51	4.57	5,500



Daly Unit No. 3

Pattern P-23 - 00/16-02-010-28W1/00

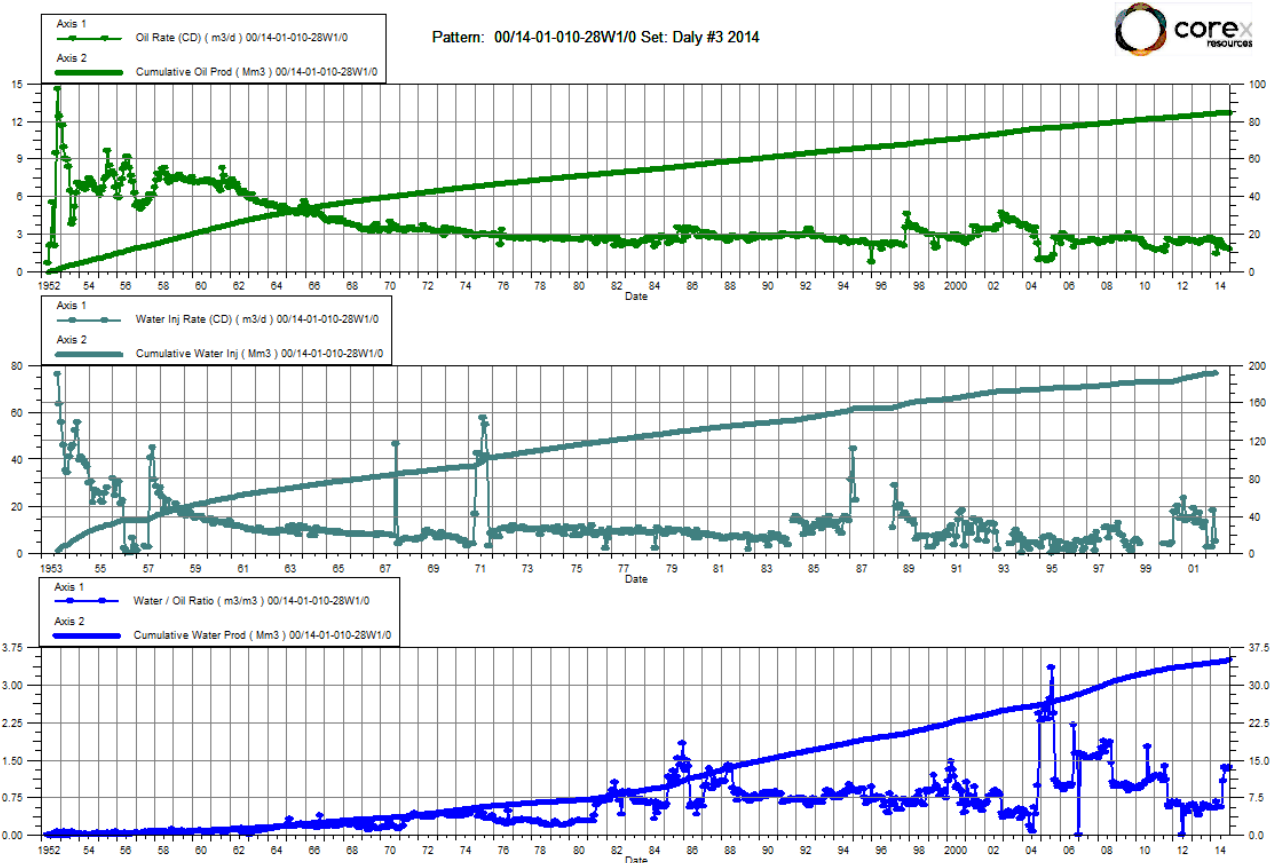
Date	Oil Rate (CD) m3/d	Cum Oil Prod Mm3	Water Rate (CD) m3/d	Cum Water Prod Mm3	Water Inj Rate (CD) m3/d	Cum Water Inj Mm3	Water Oil Ratio m3/m3	Voidage Replacement Ratio	Cum Voidage Replacemt Ratio	Water Inj Pressure kPa
1/31/2014	1.71	99.33	1.04	18.25	6.73	238.60	0.61	2.42	2.00	7,300
2/28/2014	1.79	99.38	1.06	18.28	8.54	238.83	0.59	2.96	2.00	7,300
3/31/2014	1.74	99.43	1.08	18.31	6.32	239.03	0.62	2.22	2.00	7,300
4/30/2014	1.75	99.48	1.08	18.35	6.50	239.23	0.62	2.27	2.00	7,300
5/31/2014	1.74	99.54	1.10	18.38	7.81	239.47	0.63	2.72	2.00	7,300
6/30/2014	1.73	99.59	1.05	18.41	8.01	239.71	0.60	2.85	2.00	7,300
7/31/2014	1.56	99.64	1.02	18.44	6.26	239.90	0.65	2.39	2.00	7,300
8/31/2014	2.70	99.72	1.71	18.50	7.12	240.12	0.63	1.60	2.00	7,300
9/30/2014	3.22	99.82	1.93	18.55	4.21	240.25	0.60	0.81	2.00	7,250
10/31/2014	3.20	99.92	1.85	18.61	5.38	240.42	0.58	1.05	2.00	5,800
11/30/2014	3.22	100.01	1.88	18.67		240.42	0.58		1.99	5,800
12/31/2014	3.23	100.11	1.79	18.72	0.32	240.43	0.55	0.06	1.99	5,800



Daly Unit No. 3

Pattern P-24 - 00/14-01-010-28W1/00

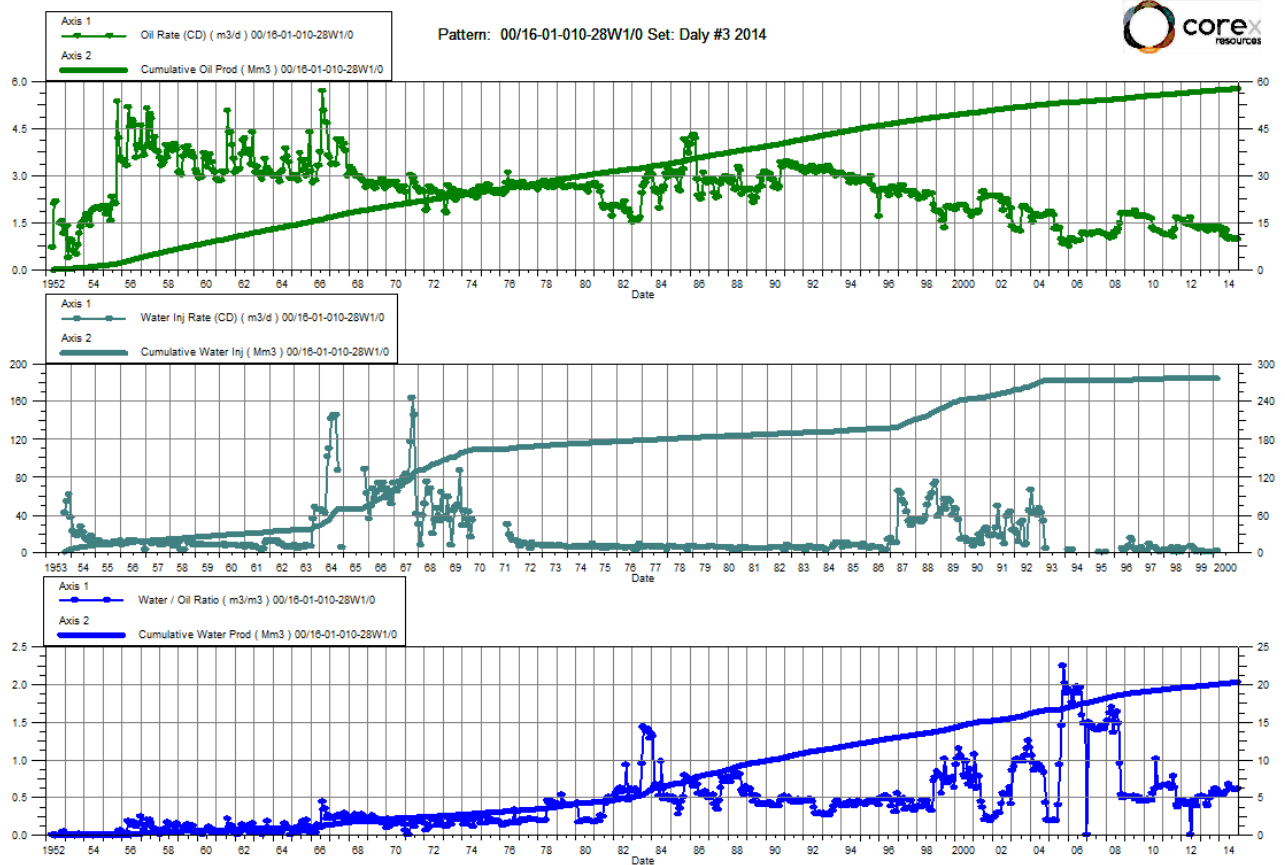
Date	Oil Rate (CD) m3/d	Cum Oil Prod Mm3	Water Rate (CD) m3/d	Cum Water Prod Mm3	Water Inj Rate (CD) m3/d	Cum Water Inj Mm3	Water Oil Ratio m3/m3	Voidage Replacement Ratio	Cum Voidage Replacemt Ratio	Water Inj Pressure kPa
1/31/2014	2.52	84.20	1.38	34.48		192.02	0.55		1.60	--
2/28/2014	2.63	84.27	1.40	34.52		192.02	0.53		1.60	--
3/31/2014	2.35	84.35	1.27	34.56		192.02	0.54		1.59	--
4/30/2014	1.40	84.39	0.95	34.59		192.02	0.68		1.59	--
5/31/2014	2.39	84.46	1.39	34.63		192.02	0.58		1.59	--
6/30/2014	2.53	84.54	1.38	34.67		192.02	0.54		1.59	--
7/31/2014	2.35	84.61	1.30	34.71		192.02	0.55		1.59	--
8/31/2014	2.09	84.68	2.27	34.78		192.02	1.09		1.59	--
9/30/2014	1.90	84.73	2.57	34.86		192.02	1.36		1.58	--
10/31/2014	1.88	84.79	2.48	34.94		192.02	1.32		1.58	--
11/30/2014	1.90	84.85	2.50	35.01		192.02	1.32		1.58	--
12/31/2014	1.85	84.90	2.51	35.09		192.02	1.36		1.58	--



Daly Unit No. 3

Pattern P-25 - 00/16-01-010-28W1/00

Date	Oil Rate (CD) m3/d	Cum Oil Prod Mm3	Water Rate (CD) m3/d	Cum Water Prod Mm3	Water Inj Rate (CD) m3/d	Cum Water Inj Mm3	Water Oil Ratio m3/m3	Voidage Replacement Ratio	Cum Voidage Replacemt Ratio	Water Inj Pressure kPa
1/31/2014	1.28	57.35	0.72	20.10		277.99	0.56		3.54	--
2/28/2014	1.34	57.39	0.73	20.12		277.99	0.54		3.54	--
3/31/2014	1.10	57.43	0.58	20.14		277.99	0.53		3.53	--
4/30/2014	1.31	57.47	0.74	20.16		277.99	0.57		3.53	--
5/31/2014	1.29	57.51	0.75	20.19		277.99	0.59		3.53	--
6/30/2014	0.99	57.54	0.67	20.21		277.99	0.68		3.53	--
7/31/2014	1.06	57.57	0.66	20.23		277.99	0.62		3.52	--
8/31/2014	1.03	57.60	0.63	20.25		277.99	0.61		3.52	--
9/30/2014	1.00	57.63	0.61	20.26		277.99	0.62		3.52	--
10/31/2014	0.99	57.66	0.59	20.28		277.99	0.60		3.52	--
11/30/2014	1.00	57.69	0.60	20.30		277.99	0.60		3.51	--
12/31/2014	0.97	57.72	0.60	20.32		277.99	0.62		3.51	--



Daly Unit No. 3

Pattern P-26 - 00/12-01-010-28W1/00

Date	Oil Rate (CD) m3/d	Cum Oil Prod Mm3	Water Rate (CD) m3/d	Cum Water Prod Mm3	Water Inj Rate (CD) m3/d	Cum Water Inj Mm3	Water Oil Ratio m3/m3	Voidage Replacement Ratio	Cum Voidage Replacemt Ratio	Water Inj Pressure kPa
1/31/2014	1.35	92.05	0.39	12.85	10.11	171.83	0.29	5.71	1.61	7,100
2/28/2014	1.41	92.09	0.40	12.86	8.72	172.08	0.29	4.73	1.61	7,100
3/31/2014	1.37	92.13	0.41	12.87	9.52	172.37	0.30	5.27	1.61	7,100
4/30/2014	1.38	92.17	0.41	12.88	7.19	172.59	0.30	3.96	1.62	7,100
5/31/2014	1.37	92.22	0.42	12.90	9.73	172.89	0.31	5.34	1.62	7,100
6/30/2014	1.37	92.26	0.40	12.91	10.21	173.20	0.29	5.69	1.62	7,100
7/31/2014	1.41	92.30	0.43	12.92	9.02	173.48	0.30	4.83	1.62	7,100
8/31/2014	1.37	92.34	0.38	12.93	8.66	173.74	0.28	4.87	1.62	7,100
9/30/2014	1.31	92.38	0.35	12.94	2.02	173.81	0.26	1.20	1.62	7,060
10/31/2014	1.30	92.42	0.33	12.95	7.15	174.03	0.26	4.30	1.62	5,897
11/30/2014	1.31	92.46	0.34	12.96	5.38	174.19	0.26	3.20	1.63	5,800
12/31/2014	1.28	92.50	0.34	12.97	1.48	174.23	0.27	0.90	1.62	5,800

