

Daly Unit #3
2018 Annual EOR Report

Executive Summary

In 2018, oil production in the Daly Unit #3 was 210.2 m³/d (1,322 bbl/d) totaling 76.8 e³m³ (483.1 mmbbl). Annual production increased by 110.5% from 2017 to 2018 and was held relatively flat for the year. This is an exceptional increase in production, through the help of drilling horizontal multistage fractured wells within the unit. By the end of 2018 cumulative oil production from the Daly Unit #3 was 2,321 e³m³ (14.6 mmbbl).

In December 2018 there were 60 producing oil wells (including crossover wells with the bottom hole location in Daly #3), and 5 wells drilled but not producing, and no water injection wells were active in the unit.

Discussion

By 1957 the bulk of the development drilling was complete and since then little development occurred prior to Corex operatorship. Water injection began 2 years after the initial production and provided pressure support immediately. Peak production occurred in 1955 at 213 m³/d (1,340 bbl/d). In 1984 more producing wells began to be converted to injection wells. As a result of increased water injection, production went from ~75 m³/d in 1984 to ~95 m³/d in 1992. This is a very poor increase in production with secondary recovery, the waterflood response was muted compared to all the other units and did not appear to be very successful.

Horizontal drilling has been done previously within the unit. In 1996 two wells were drilled and in 1997 three wells were drilled. These unstimulated horizontal wells produce at modest rates, but have high oil cut and added valuable incremental recoverable reserves to the unit. The low decline production profile of these wells contrasts significantly to horizontal wells produced under primary recovery indicating effective pressure maintenance. Their impact is shown below at a cumulative oil recovery of 1,700 e³m³ (10.7 MMbbl). In 2014, three horizontals in the Middle Daly and a vertical Crinoidal well were drilled in the unit. In 2015, an additional two Middle Daly wells were drilled as well as a Crinoid vertical well. In 2016, two re-entry legs were drilled off of an existing Daly horizontal well. In 2017, six Daly horizontals, one Crinoidal, and one Crinoidal re-entry were drilled within the unit. In 2018, 17 wells were drilled within the unit, although not all of them were on production at the end of 2018. The wells, especially the horizontals, were successful and greatly improved unit production.

The significant operations in 2018 are as follows:

- January 2018, drilled the 102/09-02-010-28W1/00 horizontal well in the Daly formation.
- January 2018, drilled the 103/09-02-010-28W1/00 horizontal well in the Daly formation.
- January 2018, drilled the 102/07-13-010-28W1/00 horizontal well in the Daly formation.
- January 2018, drilled the 102/06-13-010-28W1/00 horizontal well in the Daly formation.
- January 2018, drilled the 102/02-12-010-28W1/00 horizontal well in the Daly formation.

- January 2018, drilled the 102/04-13-010-28W1/00 horizontal well in the Daly formation.
- July 2018, drilled the 102/07-12-010-28W1/00 horizontal well in the Daly formation.
- July 2018, drilled the 103/07-12-010-28W1/00 horizontal well in the Daly formation.
- July 2018, drilled the 103/12-13-010-28W1/00 horizontal well in the Daly formation.
- August 2018, drilled the 102/11-13-010-28W1/00 horizontal well in the Daly formation.
- August 2018, drilled the 102/13-13-010-28W1/00 horizontal well in the Daly formation.
- August 2018, drilled the 103/13-13-010-28W1/00 horizontal well in the Daly formation.
- October 2018, drilled the 102/05-12-010-28W1/00 horizontal well in the Daly formation.
- October 2018, drilled the 103/12-10-010-28W1/00 crossover well in the Daly formation.
- October 2018, suspend the 100/12-01-010-28W1/00 vertical well.
- October 2018, drill the 104/12-10-010-28W1/00 crossover horizontal well in the Daly.
- October 2018, drill the 104/06-10-010-28W1/00 crossover horizontal well in the Daly.
- November 2018, drill the 103/04-13-010-28W1/00 crossover horizontal well in the Daly.

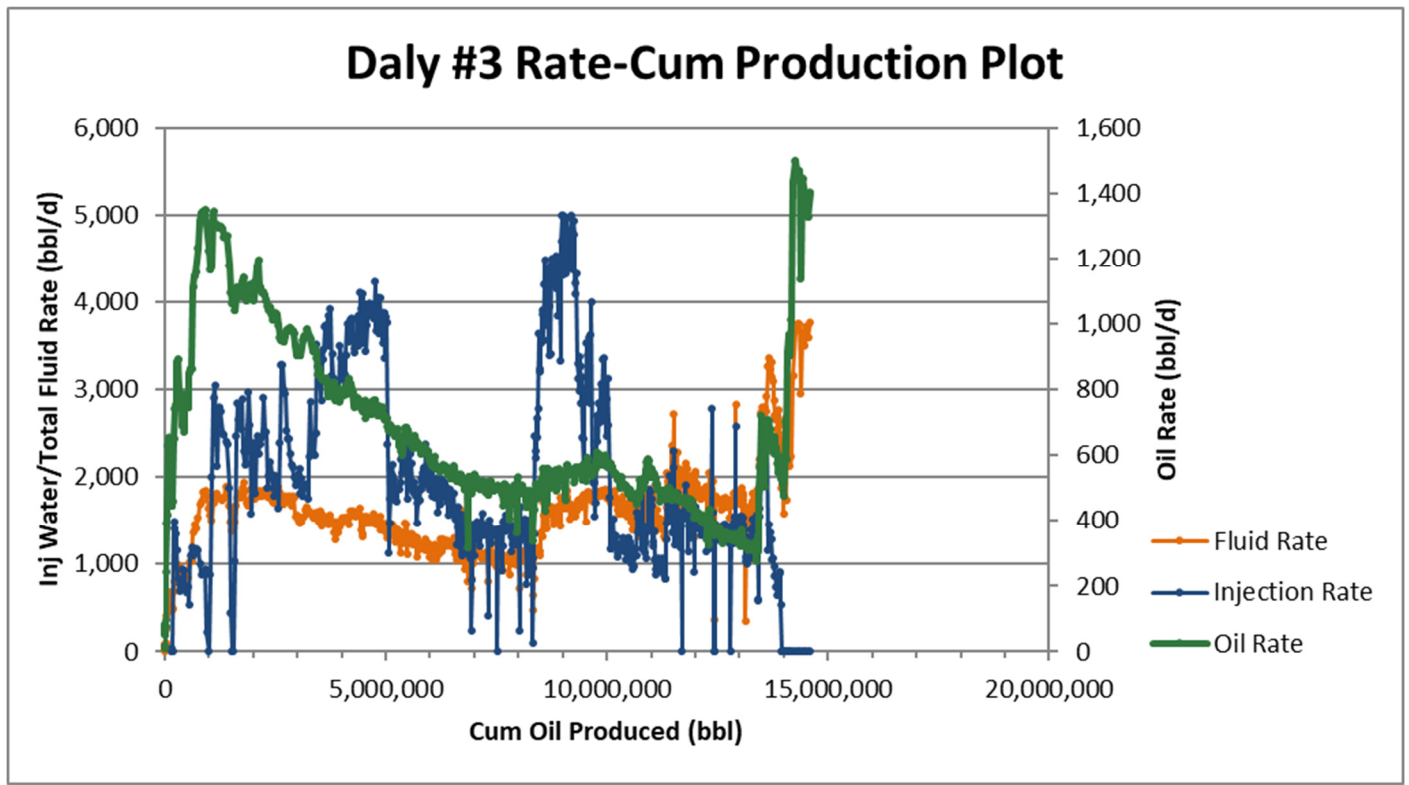
Historically, the waterflood has not been particularly effective, as the high oil cuts throughout the unit can attest. The water may have provided pressure support, but it appears as if there was very little effective sweep in the reservoir and water, in general, has not broken through. This is apportioned to out of zone injection. With the currently high oil cuts it is easier to drill in the unit, but effective secondary recovery will need to be implemented. Furthermore, Chevron while drilling lost a well when they encountered 15 MPa in the Amaranth formation, clearly due to out of zone injection. In some of the wells the casing did not reach past the Amaranth and so injection water was placed in

the zone and pressured it up. Therefore, Corex implements extra precautions when drilling in the unit, ensuring the safe drilling of wells. The unit has plenty of potential and improving the waterflood would be beneficial; however, the old verticals should not be considered for injection conversion. The unit is currently set up fully with 5-spot patterns. As of April 2017, there was no injection in the unit, all water going to the disposal well. There was no water injection whatsoever in 2018 and the producing WOR decreased to 1.7 m³/m³. The injected water is not filtered or treated, but with the completion of a battery upgrade it will be.

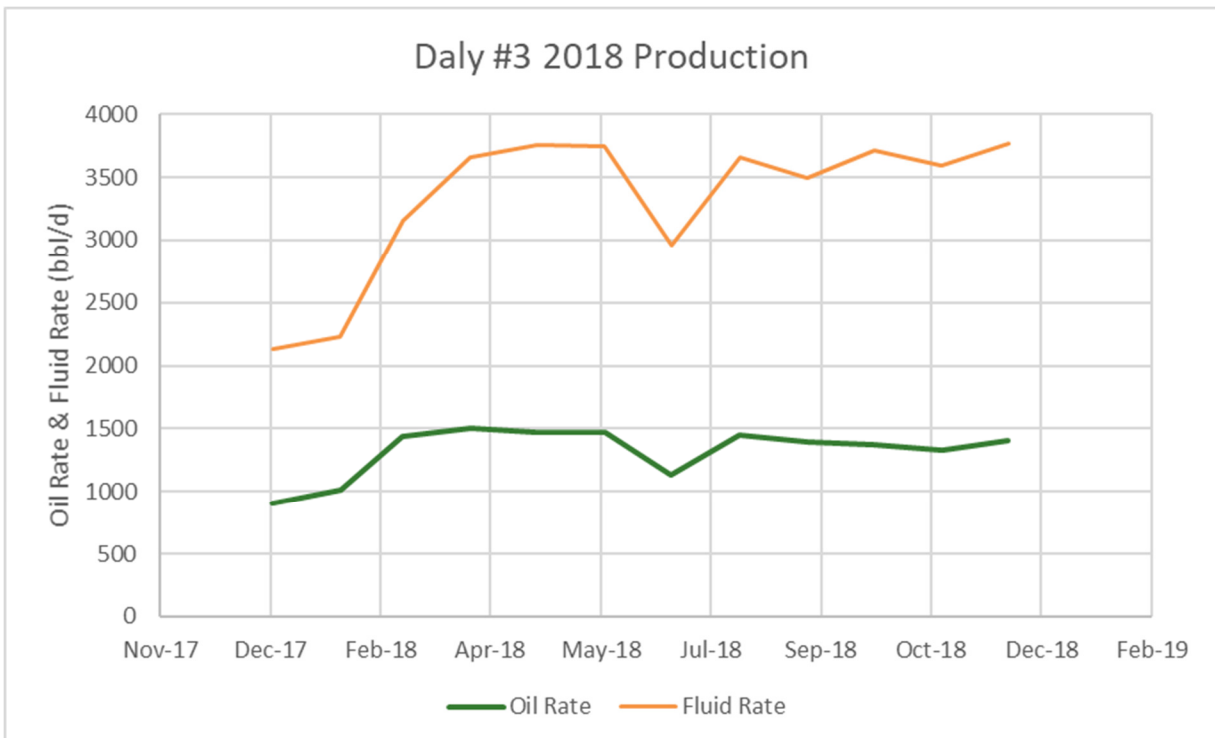
It is important to note that publicly available production data does not include contribution from the newly drilled wells. Volumes quoted, and unit graphs presented are based on public production data augmented with proprietary data, and consequently should accurately reflect all wells. The pattern data within the tables below is based solely on publicly available production data and therefore missing some production volumes. These tables will be updated in subsequent progress reports.

Detailed production, injection, voidage tables and plots for the total unit and each injection pattern are at the end of this report.

Daly #3 – Rate vs Cum Oil Production



Daly #3 – Rate vs Time



2018 Reservoir Pressure Surveys

Unit	UWI	License	Test Type	Date of Pressure	Duration of SI (days)	Datum BHP (kPaa)
Daly #3	100/13-06-010-27W1/00	1144	FL Shot	2018-07-26	6	2,335
Daly #3	100/04-07-010-27W1/00	2138	FL Shot	2018-07-26	6	1,445
Daly #3	102/05-01-010-28W1/00	10624	AWS BU	2018-07-28	8	1,427
Daly #3	100/05-01-010-28W1/00	454	FL Shot	2018-07-26	6	1,522
Daly #3	102/10-01-010-28W1/00	10173	AWS BU	2018-07-26	6	961
Daly #3	103/10-01-010-28W1/00	10422	AWS BU	2018-07-26	6	962
Daly #3	100/11-01-010-28W1/00	1801	FL Shot	2018-07-26	506	4,752
Daly #3	100/13-01-010-28W1/00	191	FL Shot	2018-07-26	6	720
Daly #3	100/15-01-010-28W1/00	153	FL Shot	2018-07-26	6	579
Daly #3	100/08-02-010-28W1/00	316	FL Shot	2018-07-26	6	1,469
Daly #3	100/09-02-010-28W1/00	270	FL Shot	2018-07-26	6	950
Daly #3	100/15-02-010-28W1/00	168	FL Shot	2018-07-26	6	882
Daly #3	100/09-10-010-28W1/00	324	FL Shot	2018-07-26	6	1,056
Daly #3	100/10-10-010-28W1/00	325	FL Shot	2018-07-26	6	974
Daly #3	100/01-11-010-28W1/00	304	FL Shot	2018-07-26	6	1,384
Daly #3	100/09-11-010-28W1/00	837	FL Shot	2018-07-26	6	1,334
Daly #3	100/11-11-010-28W1/00	876	FL Shot	2018-07-26	476	4,187
Daly #3	100/01-12-010-28W1/00	916	FL Shot	2018-07-26	416	4,171
Daly #3	102/03-12-010-28W1/00	4733	AWS BU	2018-07-29	9	4,105
Daly #3	100/03-12-010-28W1/00	183	FL Shot	2018-07-26	6	1,984
Daly #3	100/07-12-010-28W1/00	18	FL Shot	2018-07-22	2	701
Daly #3	100/09-12-010-28W1/00	1043	FL Shot	2018-07-26	866	8,207
Daly #3	1A0/12-12-010-28W1/00	4291	FL Shot	2018-07-26	6	2,677
Daly #3	100/13-12-010-28W1/00	815	FL Shot	2018-07-26	6	1,985
Daly #3	100/02-13-010-28W1/00	462	FL Shot	2018-07-26	146	5,186
Daly #3	102/04-13-010-28W1/00	10831	AWS BU	2018-07-29	9	5,307
Daly #3	102/07-13-010-28W1/00	10869	AWS BU	2018-07-28	8	1,950
Daly #3	100/10-13-010-28W1/00	727	FL Shot	2018-07-26	56	4,337
Daly #3	100/14-13-010-28W1/00	692	FL Shot	2018-07-26	56	4,087

In 2018, twenty-nine pressures were taken in Daly Unit No. 3, giving an average reservoir pressure of 2,470 kPa. However, there is concern over the quality of the data taken. As can be seen many of the wells had pressures taken over only a short shut-in period. If you take the pressures only from the wells that were shut in for longer than ten days the average pressure would be 4,990 kPa. Whereas the average pressure for the wells that were shut in for ten days or less would give a pressure of 1,669 kPa. This

indicates that the permeability of the formation is too low to build properly unless there is a significant shut-in duration. Therefore, the average pressure within the unit is likely closer to 4,500 kPa. In general, the pressures vary widely in the unit, although many of the producing wells have low pressures. From the limited 2015 data the average reservoir pressure was 4,700 kPaa, significantly lower than the average pressure calculated in 2018, again, there is concern over the quality of the data and therefore it is difficult to determine how much the pressure has dropped. As all injection within the unit in the vertical wells has stopped there is concern that the overall pressure is significantly dropping. There are plans to begin converting some of the horizontal wells to injection, which will help to provide pressure support within the unit. The initial reservoir pressure is estimated at 6,585 kPaa and the bubble point pressure as 1,515 kPaa.

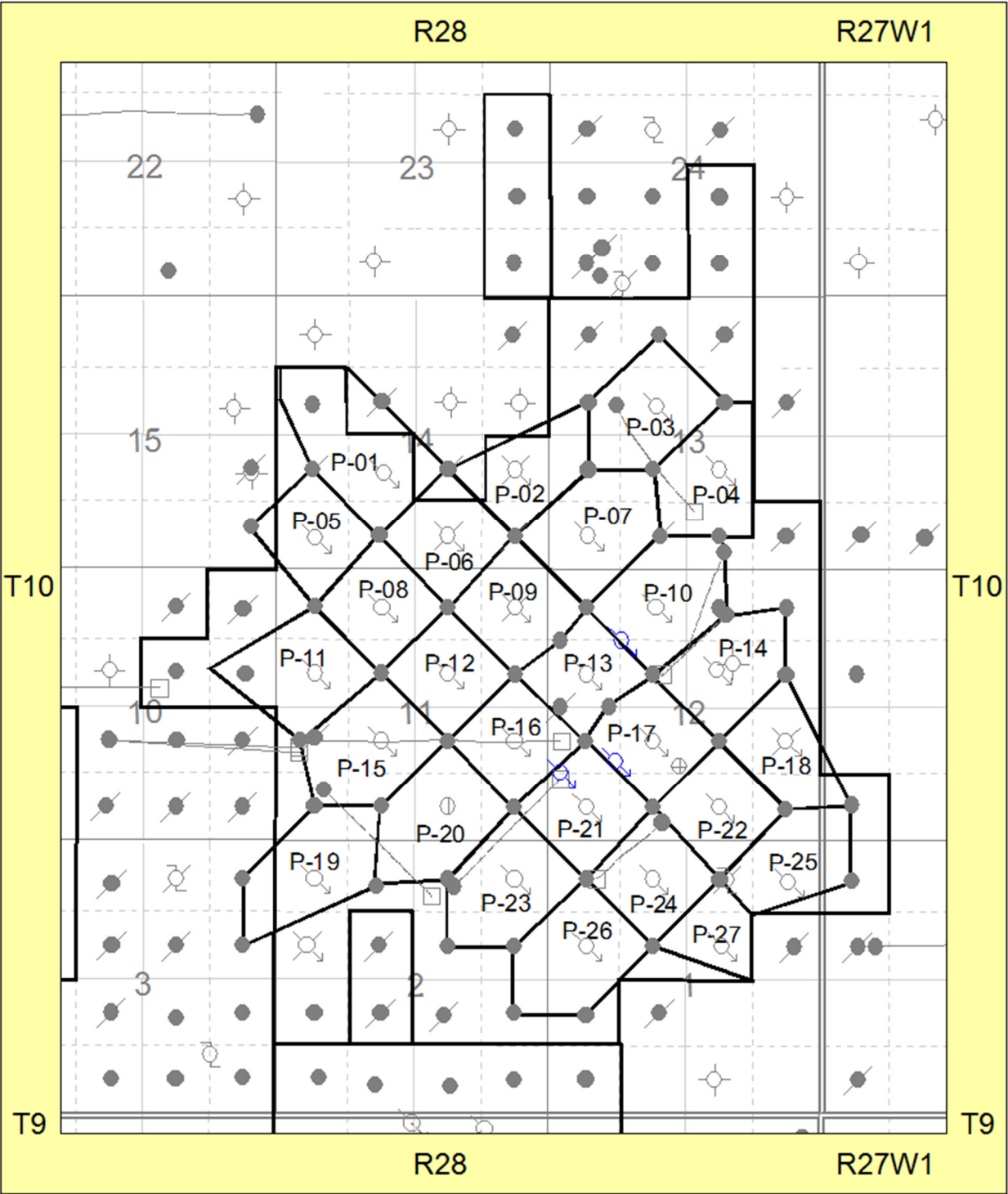
There are some wells in the unit with noticeably low pressures. Oddly, historical data shows many producers surrounded by injectors have had low pressures in the 1,000 kPa range, further indicating poor sweep efficiency and out of zone injection. This observation is supported by the data collected in 2015, where some very low pressures were seen in the producing wells. For a unit that has been under water flood for 58 years, clearly the water is not in zone to provide pressure support. The large periods where, historically, they over injected likely contributed to the out of zone injection. Despite many producers near to injectors with low pressures there are also wells far away from injection that have been seen to have high pressures that cannot be easily rationalized. The huge range in pressures in wells close to injectors and producers with high oil cuts indicate that there is poor communication between many of the injectors and the producers and that the waterflood cannot be taken to be successful. Considering this, the unit has plenty of opportunity if a successful waterflood is implemented, as seen in the other units.

There was no Instantaneous Voidage Replacement Ratio (VRR) in 2018 as there was no longer any injection. The cumulative VRR at year end was 1.18, continuing to drop. It is encouraging that the over injection is being reduced. However, in the long-term, waterflood support will be needed to maintain the pressure. It is also important to note that any out of zone injection is not considered for these calculations. An oil formation volume factor of $1.06 \text{ rm}^3/\text{sm}^3$ and a water formation volume factor of $1.04 \text{ rm}^3/\text{sm}^3$ were used in the VRR calculations.

2018 Well Servicing

UWI	Unit	Licence	Operation	Date	Objective
HEADER REPLACEMENT	DU#3	F18DAL003	Header Repair	2018-01-04	
102/09-02-010-28W1/00	DU#3	10860	Initial Completion	2018-01-29	MIDDLE DALY COMPLETION
103/09-02-010-28W1/00	DU#3	10861	Initial Completion	2018-01-29	MIDDLE DALY COMPLETION
100/02-13-010-28W1/00	DU#3	000462	Wellhead Repair	2018-01-30	
100/05-13-010-28W1/00	DU#3	000602	Wellhead Repair	2018-01-31	
100/10-13-010-28W1/00	DU#3	000727	Wellhead Repair	2018-01-31	
100/07-12-010-28W1/00	DU#3	000018	Wellhead Repair	2018-02-02	
102/06-13-010-28W1/00	DU#3	10868	Initial Completion	2018-02-02	DALY COMPLETION
100/04-07-010-27W1/00	DU#3	002138	Wellhead Repair	2018-02-02	
102/07-13-010-28W1/00	DU#3	10869	Initial Completion	2018-02-02	DALY COMPLETION
102/04-13-010-28W1/00	DU#3	10831	Initial Completion	2018-02-03	MIDDLE DALY COMPLETION
102/01-12-010-28W1/00	DU#3	10866	Initial Completion	2018-02-05	DALY COMPLETION
102/02-12-010-28W1/00	DU#3	10867	Initial Completion	2018-02-05	DALY COMPLETION
102/14-01-010-28W1/00	DU#3	10774	Install Separator	2018-02-12	
103/05-02-010-28W1/00	DU#3	10196	Pump Repair	2018-02-21	
102/03-12-010-28W1/00	DU#3	004733	Pump Repair	2018-05-23	
103/12-11-010-28W1/00	DU#3	10269	Pump Repair	2018-06-07	
102/15-12-010-28W1/00	DU#3	4735	Pump Repair	2018-06-13	
100/15-11-010-28W1/00	DU#3	000890	Pump Repair	2018-06-13	
INJECTION LINE INSTALLATION	DU#3	WF18DAL003	Injection Pipeline	2018-06-27	
INJECTION HEADER INSTALL	DU#3	WF18DAL004	Water Injection Header	2018-07-03	
TURNAROUND	DU#3	T18DAL005	Turnaround	2018-07-05	
102/07-12-010-28W1/00	DU#3	10950	Initial Completion	2018-07-21	DALY COMPLETION
103/07-12-010-28W1/00	DU#3	10951	Initial Completion	2018-07-21	DALY COMPLETION
100/07-24-010-28W1/00	DU#3	001104	Single Well Battery Conversion	2018-07-26	
100/02-24-010-28W1/00	DU#3	000847	Wellhead Repair	2018-08-03	
103/12-13-010-28W1/00	DU#3	11000	Initial Completion	2018-08-10	DALY COMPLETION
102/11-13-010-28W1/00	DU#3	10999	Initial Completion	2018-08-13	DALY COMPLETION
100/12-13-010-28W1/00	DU#3	000622	Rod Repair	2018-08-14	
102/13-13-010-28W1/00	DU#3	10971	Initial Completion	2018-08-17	DALY COMPLETION
103/13-13-010-28W1/00	DU#3	10972	Initial Completion	2018-08-17	DALY COMPLETION
100/13-12-010-28W1/00	DU#3	000815	Deepening	2018-09-04	
100/11-11-010-28W1/00	DU#3	000876	Deepening	2018-09-10	
SUSPEND FLOWLINES	DU#3	RM18DAL005	Major Surface R&M	2018-09-12	Suspend Pipeline
103/05-01-010-28W1/00	DU#3	10692	Install Compressor	2018-09-18	
100/12-01-010-28W1/00	DU#3	000323	Suspension	2018-10-04	
102/05-12-010-28W1/00	DU#3	10989	Initial Completion	2018-10-10	DALY COMPLETION
100/05-12-010-28W1/00	DU#3	000189	Wellhead Repair	2018-10-14	
100/16-01-010-28W1/00	DU#3	000279	Suspension	2018-10-15	
PIPELINE REPLACEMENT	DU#3	P17DAL002	Pipelines	2018-11-16	
105/15-01-010-28W1/00	DU#3	10717	Install Compressor	2018-12-06	
103/04-13-010-28W1/00	DU#3	11120	Initial Completion	2018-12-07	DALY COMPLETION
100/09-12-010-28W1/00	DU#3	001043	Pump Repair	2018-12-09	
HEADER REPLACEMENT	DU#3	FF18DAL007	Header Repair	2018-12-10	
104/10-12-010-28W1/00	DU#3	11138	Equip & Tie-In	2018-12-12	
103/15-12-010-28W1/00	DU#3	11139	Equip & Tie-In	2018-12-12	
103/10-12-010-28W1/00	DU#3	11137	Equip & Tie-In	2018-12-12	
104/15-12-010-28W1/00	DU#3	11140	Equip & Tie-In	2018-12-12	
103/15-01-010-28W1/00	DU#3	9842	Acid Treatment	2018-12-18	
103/10-01-010-28W1/00	DU#3	10422	Injection Conversion	2018-12-20	

Waterflood Pattern Map

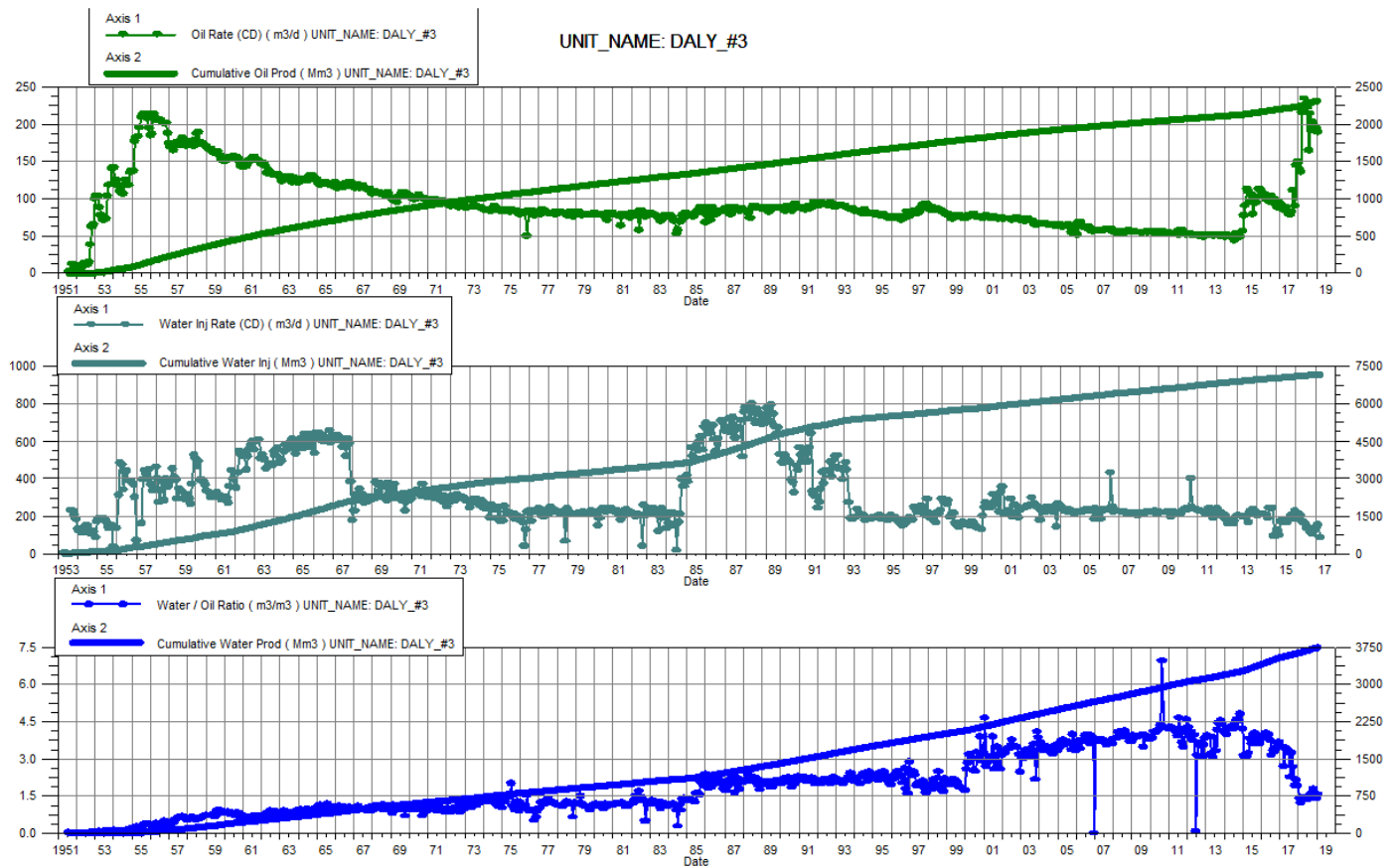


Waterflood Pattern Table

Pattern	Well
P-01	100/06-14-010-28W1/00
P-02	100/08-14-010-28W1/00
P-03	100/11-13-010-28W1/00
P-04	100/07-13-010-28W1/00
P-05	100/04-14-010-28W1/00
P-06	100/02-14-010-28W1/00
P-07	100/04-13-010-28W1/00
P-08	100/14-11-010-28W1/00
P-09	100/16-11-010-28W1/00
P-10	100/14-12-010-28W1/00
P-10	1B0/14-12-010-28W1/00
P-11	100/12-11-010-28W1/00
P-12	100/10-11-010-28W1/00
P-13	100/12-12-010-28W1/00
P-14	100/10-12-010-28W1/00
P-15	100/06-11-010-28W1/00
P-16	100/08-11-010-28W1/00
P-17	100/06-12-010-28W1/00
P-17	1A0/05-12-010-28W1/00
P-18	100/08-12-010-28W1/00
P-19	100/13-02-010-28W1/00
P-20	100/02-11-010-28W1/00
P-21	100/04-12-010-28W1/00
P-21	1B0/05-12-010-28W1/00
P-22	100/02-12-010-28W1/00
P-23	100/16-02-010-28W1/00
P-24	100/14-01-010-28W1/00
P-25	100/16-01-010-28W1/00
P-26	100/12-01-010-28W1/00

Total for Daly Unit #3

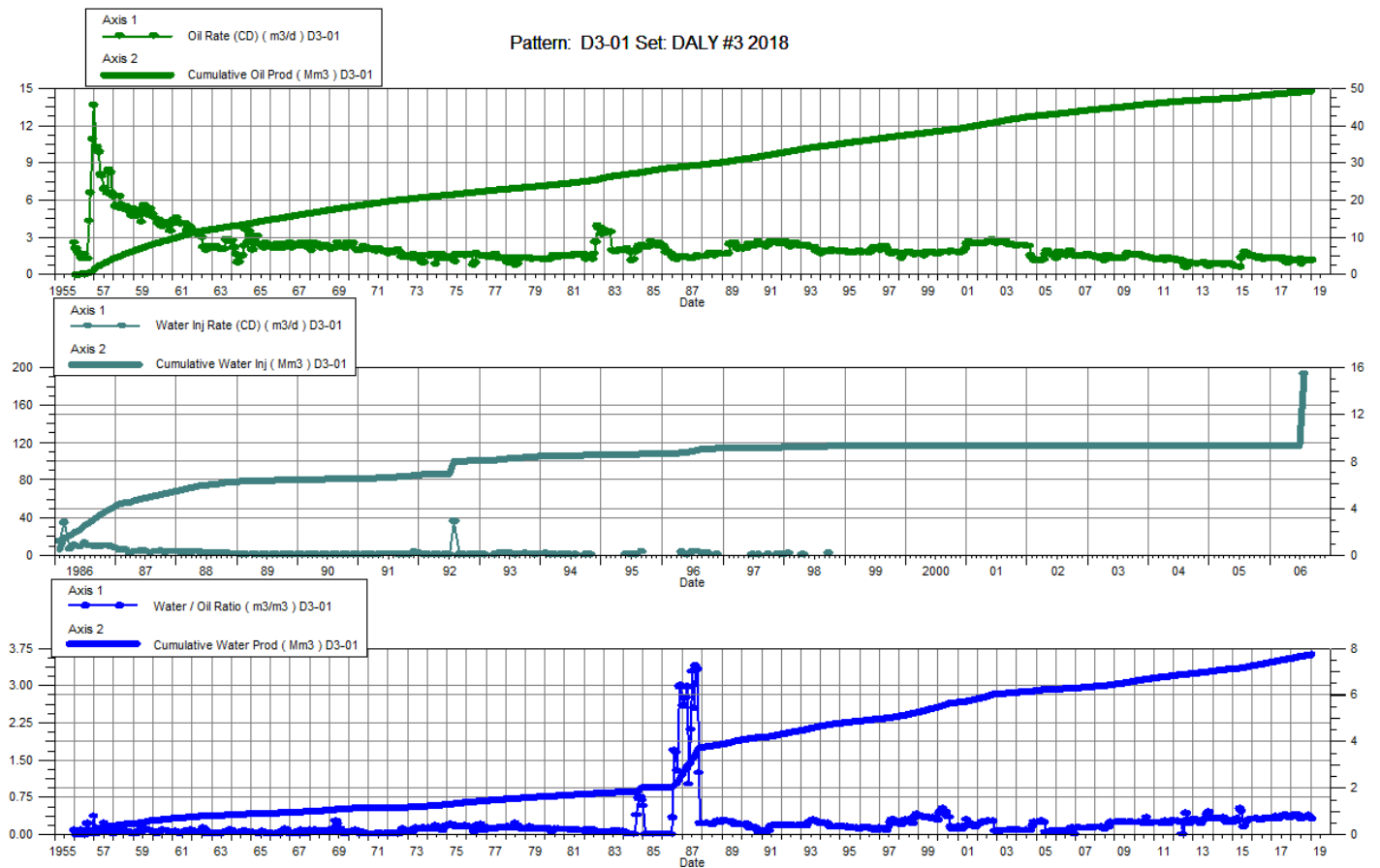
Date	Oil Rate (CD) m3/d	Cum Oil Prod Mm3	Water Rate (CD) m3/d	Cum Water Prod Mm3	Water Inj Rate (CD) m3/d	Cum Water Inj Mm3	Water Oil Ratio m3/m3	Voidage Replacement Ratio	Cum Voidage Replacemt Ratio	Water Inj Pressure kPa
1-31-2018	139.64	2247.22	196.78	3627.60		7192.35	1.41		1.22	1,217.69
2-28-2018	136.14	2251.03	167.09	3632.28		7192.35	1.23		1.21	1,217.69
3-31-2018	215.08	2257.70	307.37	3641.81		7192.35	1.43		1.21	1,217.69
4-30-2018	234.63	2264.73	337.06	3651.92		7192.35	1.44		1.21	1,217.69
5-31-2018	224.04	2271.68	313.88	3661.65		7192.35	1.40		1.20	1,217.69
6-30-2018	222.07	2278.34	302.75	3670.74		7192.35	1.36		1.20	709.36
7-31-2018	164.56	2283.44	232.04	3677.93		7192.35	1.41		1.20	455.19
8-31-2018	214.23	2290.08	307.10	3687.45		7192.35	1.43		1.19	455.19
9-30-2018	204.05	2296.21	324.69	3697.19		7192.35	1.59		1.19	381.65
10-31-2018	199.78	2302.40	357.13	3708.26		7192.35	1.79		1.19	341.14
11-30-2018	190.26	2308.11	310.34	3717.57		7192.35	1.63		1.19	218.78
12-31-2018	194.78	2314.14	272.49	3726.02		7192.35	1.40		1.18	212.32



Daly Unit No. 3

Pattern P-01 - 00/06-14-010-28W1/00

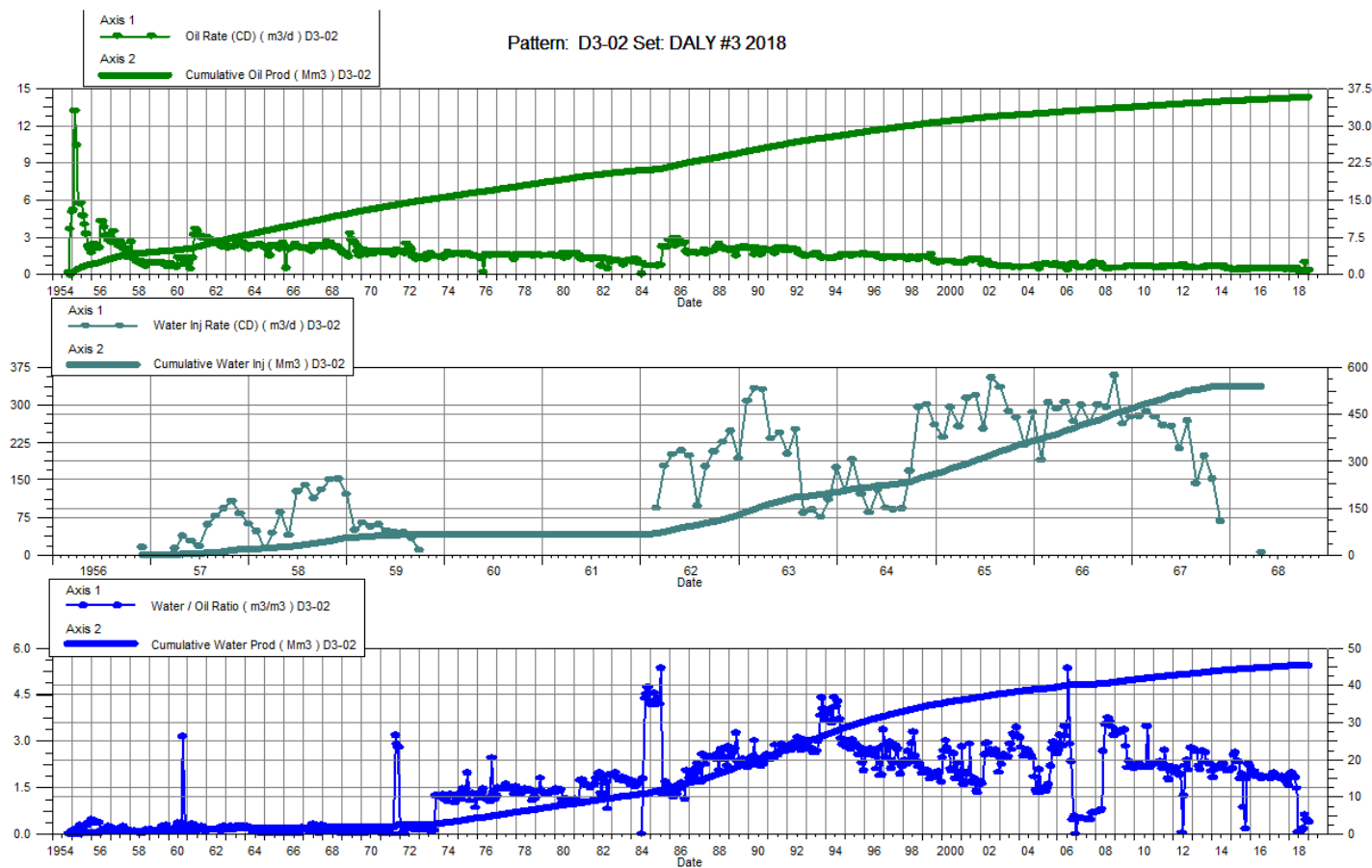
Date	Oil Rate (CD) m3/d	Cum Oil Prod Mm3	Water Rate (CD) m3/d	Cum Water Prod Mm3	Water Inj Rate (CD) m3/d	Cum Water Inj Mm3	Water Oil Ratio m3/m3	Voidage Replacement Ratio	Cum Voidage Replacemt Ratio	Water Inj Pressure kPa
1-31-2018	1.20	48.98	0.47	7.56		15.37	0.39		0.27	--
2-28-2018	1.18	49.01	0.42	7.57		15.37	0.36		0.27	--
3-31-2018	1.20	49.05	0.48	7.59		15.37	0.40		0.27	--
4-30-2018	1.21	49.09	0.46	7.60		15.37	0.38		0.27	--
5-31-2018	1.24	49.13	0.49	7.62		15.37	0.39		0.27	--
6-30-2018	1.28	49.16	0.40	7.63		15.37	0.31		0.27	--
7-31-2018	0.92	49.19	0.28	7.64		15.37	0.31		0.27	--
8-31-2018	1.10	49.23	0.37	7.65		15.37	0.33		0.27	--
9-30-2018	1.19	49.26	0.42	7.66		15.37	0.35		0.27	--
10-31-2018	1.19	49.30	0.45	7.68		15.37	0.38		0.27	--
11-30-2018	1.12	49.33	0.43	7.69		15.37	0.39		0.27	--
12-31-2018	1.15	49.37	0.40	7.70		15.37	0.35		0.27	--



Daly Unit No. 3

Pattern P-02 - 00/08-14-010-28W1/00

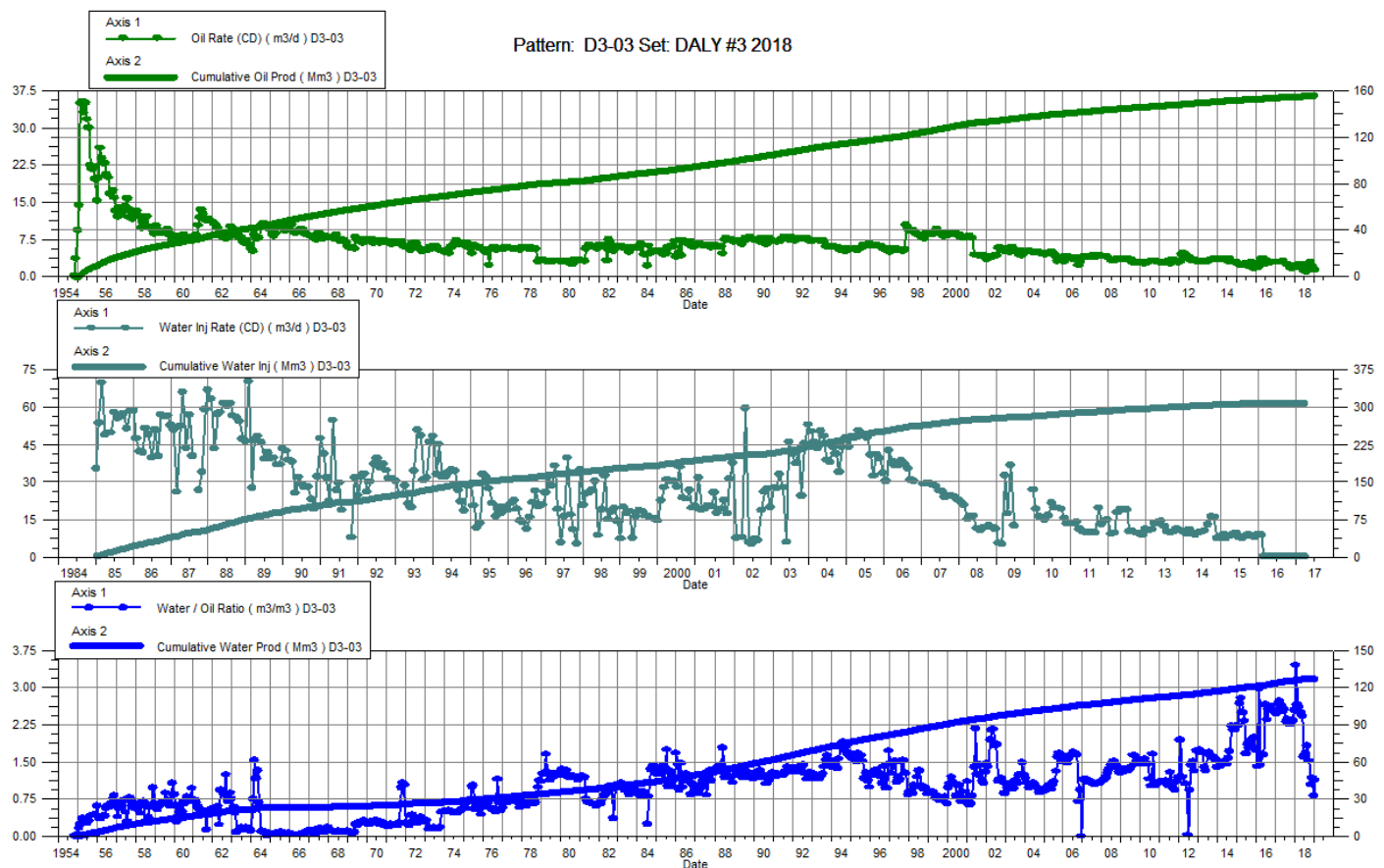
Date	Oil Rate (CD) m3/d	Cum Oil Prod Mm3	Water Rate (CD) m3/d	Cum Water Prod Mm3	Water Inj Rate (CD) m3/d	Cum Water Inj Mm3	Water Oil Ratio m3/m3	Voidage Replacement Ratio	Cum Voidage Replacemt Ratio	Water Inj Pressure kPa
1-31-2018	0.56	35.73	1.04	45.19		542.96	1.87		6.65	--
2-28-2018	0.47	35.74	0.93	45.22		542.96	1.98		6.65	--
3-31-2018	0.56	35.76	1.06	45.25		542.96	1.89		6.65	--
4-30-2018	0.56	35.78	1.02	45.28		542.96	1.82		6.64	--
5-31-2018	0.52	35.79	0.77	45.30		542.96	1.48		6.64	--
6-30-2018	0.38	35.80	0.03	45.30		542.96	0.07		6.64	--
7-31-2018	0.28	35.81	0.02	45.30		542.96	0.07		6.64	--
8-31-2018	0.36	35.82	0.03	45.30		542.96	0.08		6.64	--
9-30-2018	0.41	35.84	0.07	45.31		542.96	0.17		6.64	--
10-31-2018	1.04	35.87	0.66	45.33		542.96	0.63		6.63	--
11-30-2018	0.37	35.88	0.17	45.33		542.96	0.46		6.63	--
12-31-2018	0.38	35.89	0.15	45.34		542.96	0.41		6.63	--



Daly Unit No. 3

Pattern P-03 - 00/11-13-010-28W1/00

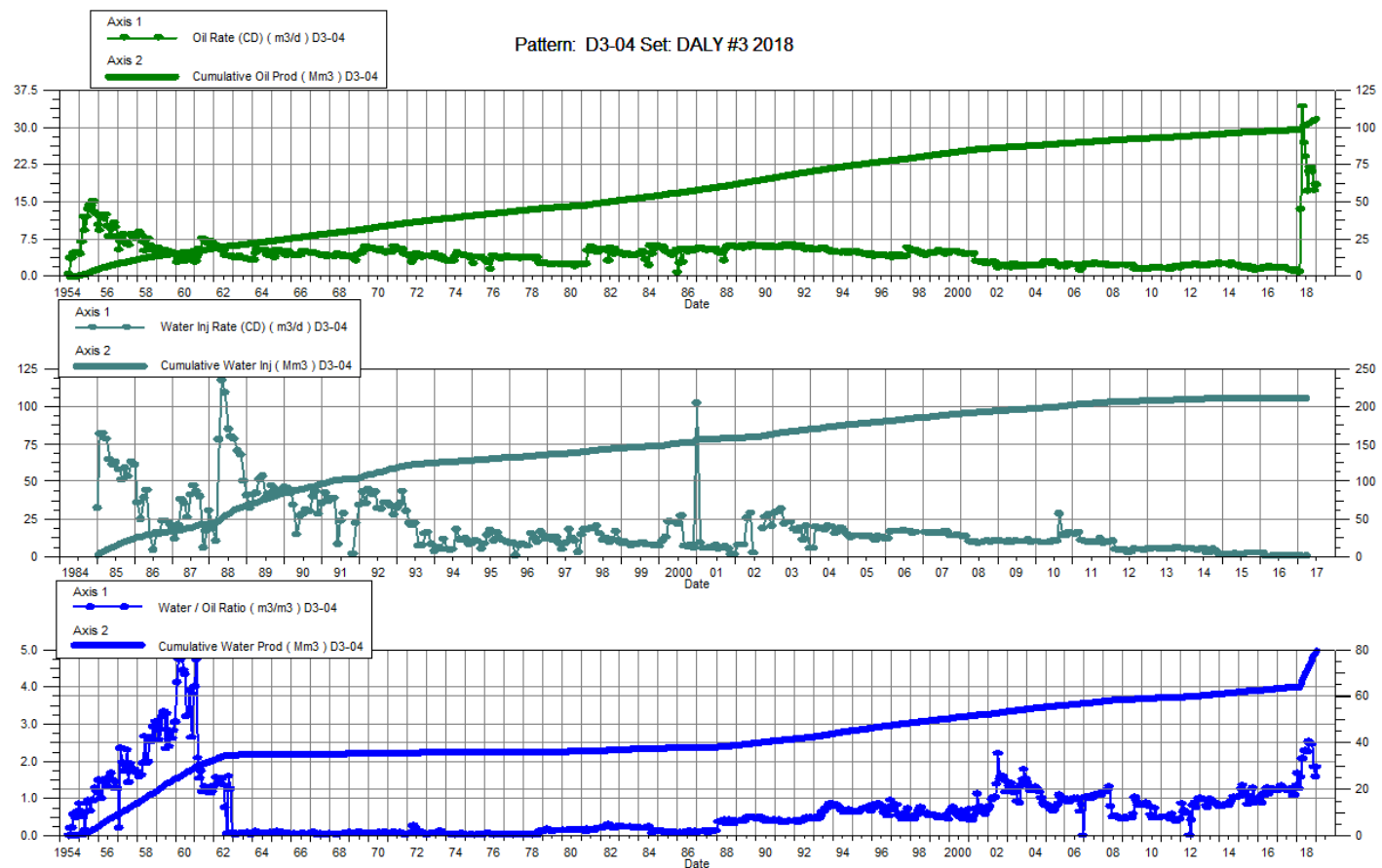
Date	Oil Rate (CD) m3/d	Cum Oil Prod Mm3	Water Rate (CD) m3/d	Cum Water Prod Mm3	Water Inj Rate (CD) m3/d	Cum Water Inj Mm3	Water Oil Ratio m3/m3	Voidage Replacement Ratio	Cum Voidage Replacemt Ratio	Water Inj Pressure kPa
1-31-2018	1.88	155.11	6.47	125.68		309.69	3.44		1.09	-
2-28-2018	1.88	155.16	4.98	125.82		309.69	2.65		1.09	-
3-31-2018	2.53	155.24	6.55	126.02		309.69	2.59		1.09	-
4-30-2018	2.58	155.31	6.42	126.22		309.69	2.49		1.09	-
5-31-2018	1.91	155.37	4.61	126.36		309.69	2.42		1.09	-
6-30-2018	1.33	155.41	2.12	126.42		309.69	1.60		1.09	-
7-31-2018	0.98	155.44	1.63	126.47		309.69	1.66		1.09	-
8-31-2018	1.34	155.48	2.45	126.55		309.69	1.83		1.09	-
9-30-2018	2.18	155.55	3.31	126.65		309.69	1.52		1.09	-
10-31-2018	2.98	155.64	3.10	126.75		309.69	1.04		1.09	-
11-30-2018	2.11	155.71	2.48	126.82		309.69	1.17		1.09	-
12-31-2018	1.52	155.75	1.25	126.86		309.69	0.82		1.08	-



Daly Unit No. 3

Pattern P-04 - 00/07-13-010-28W1/00

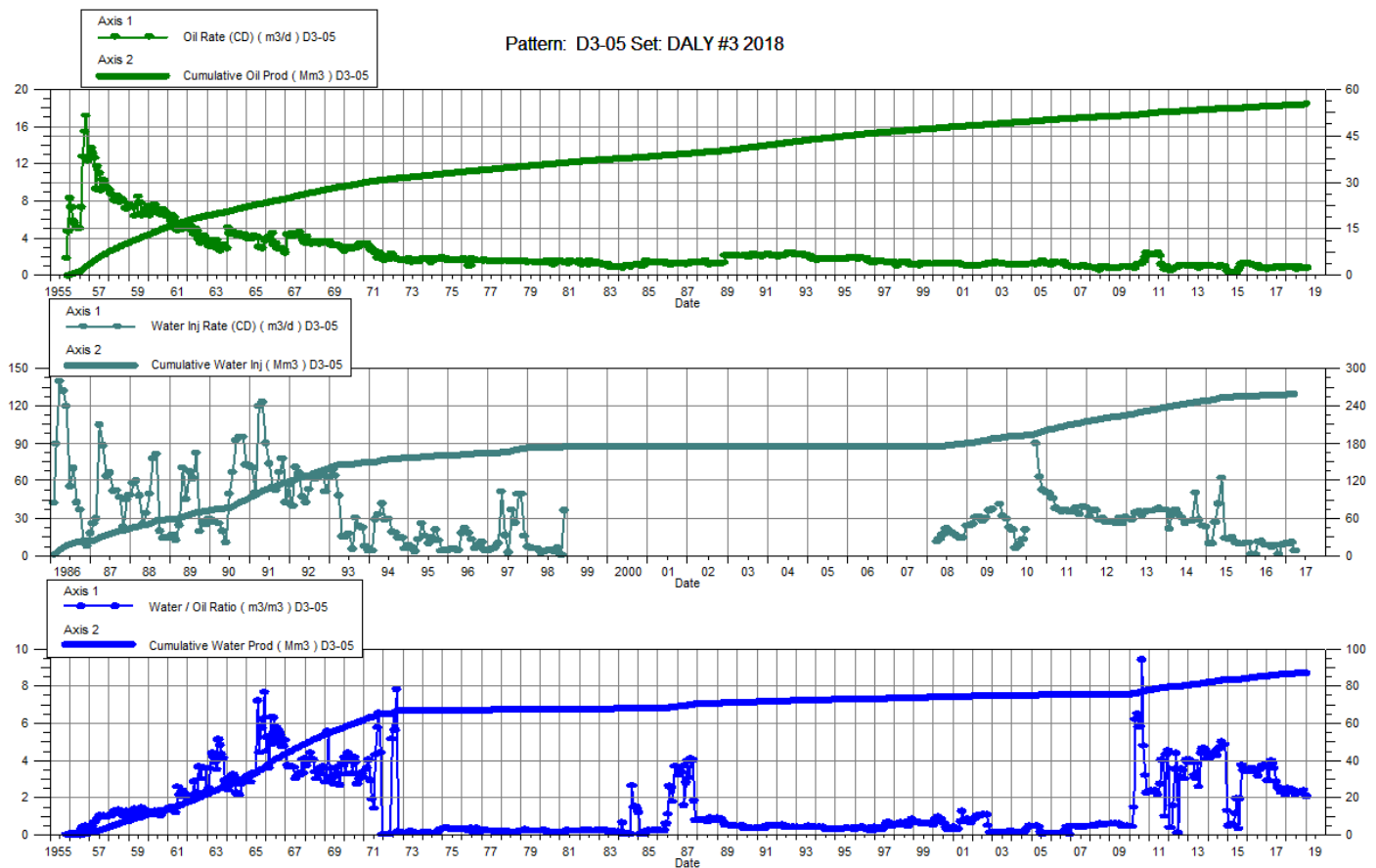
Date	Oil Rate (CD) m3/d	Cum Oil Prod Mm3	Water Rate (CD) m3/d	Cum Water Prod Mm3	Water Inj Rate (CD) m3/d	Cum Water Inj Mm3	Water Oil Ratio m3/m3	Voidage Replacement Ratio	Cum Voidage Replacemt Ratio	Water Inj Pressure kPa
1-31-2018	1.14	98.68	1.89	63.79		212.52	1.67		1.29	-
2-28-2018	0.92	98.70	1.15	63.83		212.52	1.26		1.29	-
3-31-2018	13.51	99.12	21.05	64.48		212.52	1.56		1.28	-
4-30-2018	34.23	100.15	71.08	66.61		212.52	2.08		1.26	-
5-31-2018	26.95	100.99	61.16	68.51		212.52	2.27		1.24	-
6-30-2018	24.13	101.71	55.21	70.16		212.52	2.29		1.22	-
7-31-2018	17.21	102.24	38.64	71.36		212.52	2.24		1.21	-
8-31-2018	21.21	102.90	53.45	73.02		212.52	2.52		1.20	-
9-30-2018	21.94	103.56	53.98	74.64		212.52	2.46		1.18	-
10-31-2018	21.12	104.21	51.79	76.24		212.52	2.45		1.17	-
11-30-2018	17.29	104.73	31.88	77.20		212.52	1.84		1.16	-
12-31-2018	18.49	105.31	29.32	78.11		212.52	1.59		1.15	-



Daly Unit No. 3

Pattern P-05 - 00/04-14-010-28W1/00

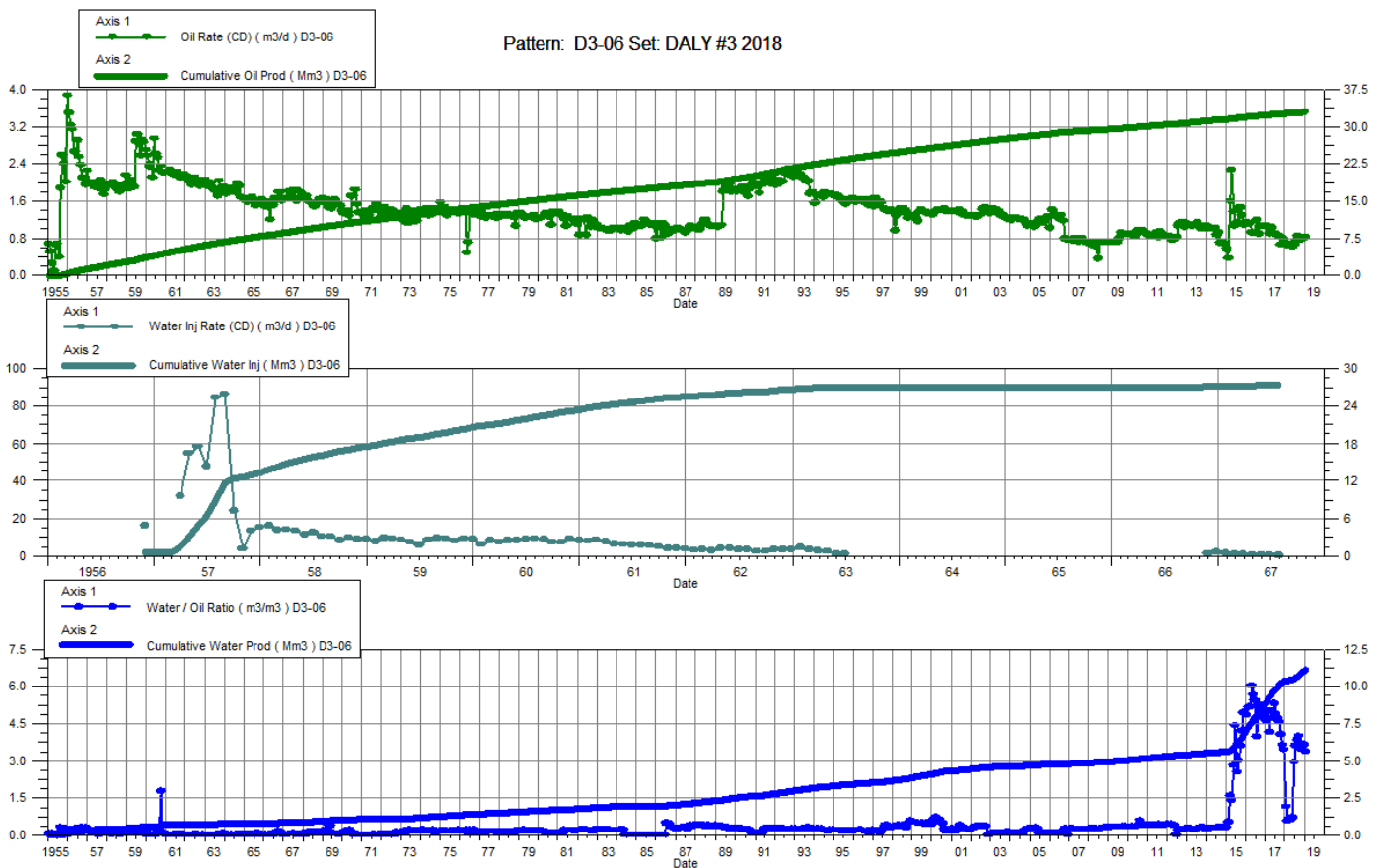
Date	Oil Rate (CD) m3/d	Cum Oil Prod Mm3	Water Rate (CD) m3/d	Cum Water Prod Mm3	Water Inj Rate (CD) m3/d	Cum Water Inj Mm3	Water Oil Ratio m3/m3	Voidage Replacement Ratio	Cum Voidage Replacemt Ratio	Water Inj Pressure kPa
1-31-2018	0.94	55.05	2.35	86.33		259.69	2.51		1.82	-
2-28-2018	0.92	55.08	2.11	86.39		259.69	2.29		1.82	-
3-31-2018	0.90	55.10	2.19	86.45		259.69	2.45		1.82	-
4-30-2018	0.94	55.13	2.28	86.52		259.69	2.43		1.82	-
5-31-2018	0.92	55.16	2.19	86.59		259.69	2.39		1.82	-
6-30-2018	0.96	55.19	2.07	86.65		259.69	2.15		1.82	-
7-31-2018	0.71	55.21	1.59	86.70		259.69	2.24		1.82	-
8-31-2018	0.95	55.24	2.09	86.77		259.69	2.21		1.82	-
9-30-2018	0.88	55.27	1.99	86.83		259.69	2.26		1.81	-
10-31-2018	0.88	55.29	2.03	86.89		259.69	2.32		1.81	-
11-30-2018	0.82	55.32	1.96	86.95		259.69	2.38		1.81	-
12-31-2018	0.84	55.34	1.80	87.00		259.69	2.14		1.81	-



Daly Unit No. 3

Pattern P-06 - 00/02-14-010-28W1/00

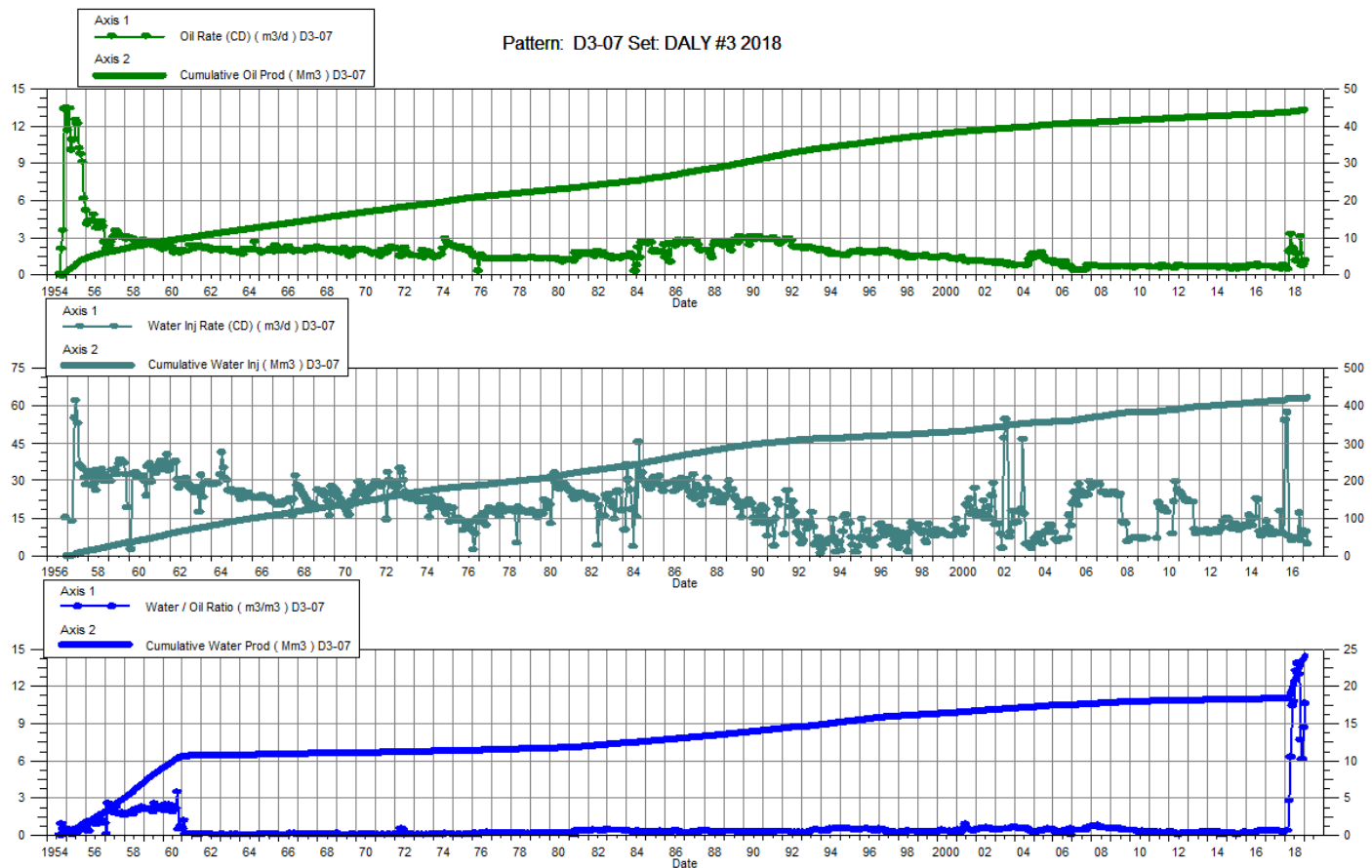
Date	Oil Rate (CD) m3/d	Cum Oil Prod Mm3	Water Rate (CD) m3/d	Cum Water Prod Mm3	Water Inj Rate (CD) m3/d	Cum Water Inj Mm3	Water Oil Ratio m3/m3	Voidage Replacement Ratio	Cum Voidage Replacemt Ratio	Water Inj Pressure kPa
1-31-2018	0.68	32.75	0.79	10.35		27.41	1.16		0.63	--
2-28-2018	0.66	32.77	0.39	10.36		27.41	0.59		0.63	--
3-31-2018	0.67	32.79	0.44	10.38		27.41	0.66		0.63	--
4-30-2018	0.68	32.81	0.43	10.39		27.41	0.63		0.63	--
5-31-2018	0.63	32.83	0.44	10.40		27.41	0.71		0.63	--
6-30-2018	0.71	32.85	2.08	10.47		27.41	2.94		0.62	--
7-31-2018	0.68	32.88	2.45	10.54		27.41	3.61		0.62	--
8-31-2018	0.87	32.90	3.33	10.65		27.41	3.83		0.62	--
9-30-2018	0.82	32.93	3.28	10.74		27.41	4.00		0.62	--
10-31-2018	0.83	32.95	2.88	10.83		27.41	3.46		0.62	--
11-30-2018	0.78	32.98	2.74	10.92		27.41	3.49		0.62	--
12-31-2018	0.84	33.00	3.07	11.01		27.41	3.66		0.61	--



Daly Unit No. 3

Pattern P-07 - 00/04-13-010-28W1/00

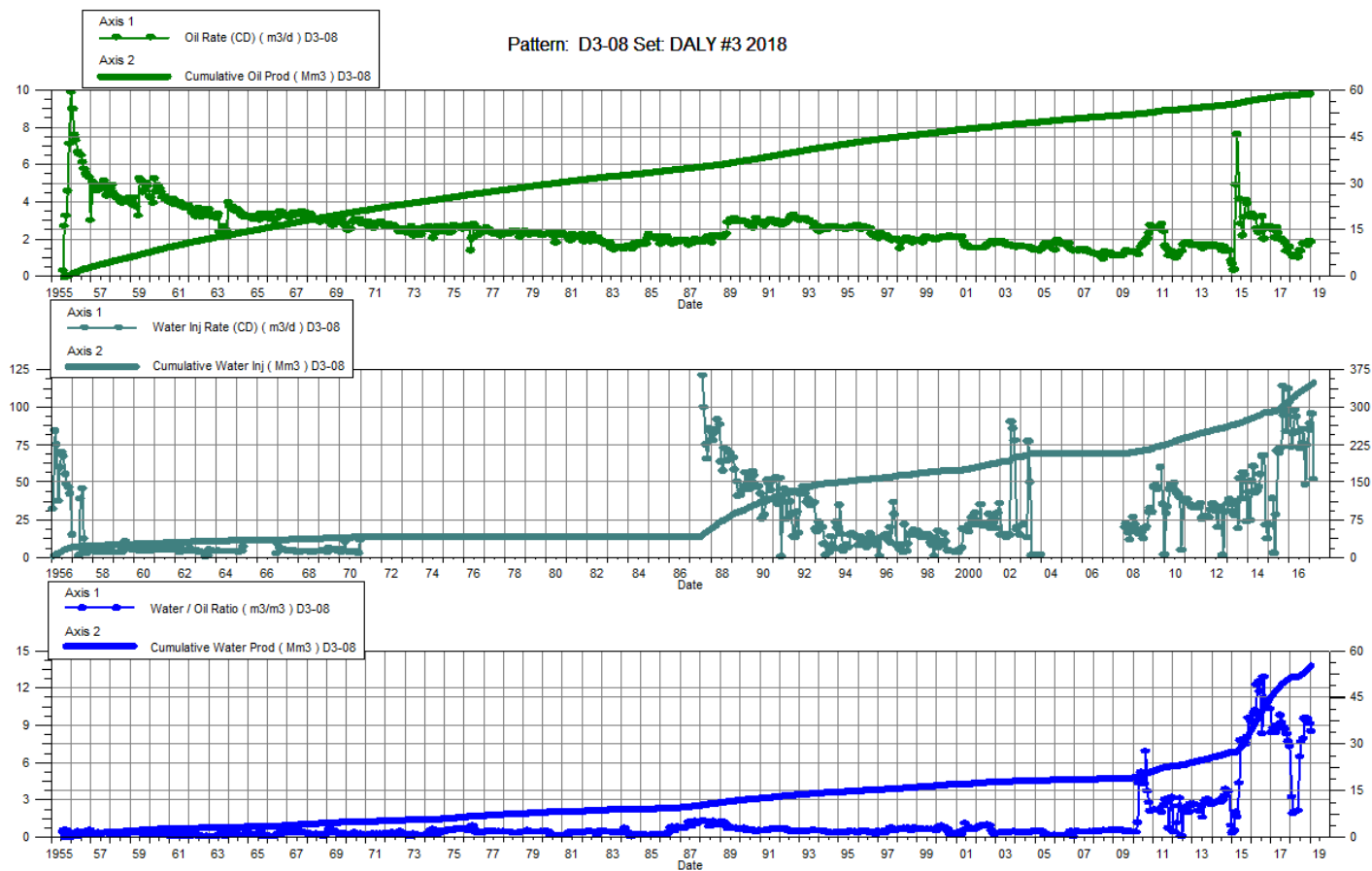
Date	Oil Rate (CD) m3/d	Cum Oil Prod Mm3	Water Rate (CD) m3/d	Cum Water Prod Mm3	Water Inj Rate (CD) m3/d	Cum Water Inj Mm3	Water Oil Ratio m3/m3	Voidage Replacement Ratio	Cum Voidage Replacemt Ratio	Water Inj Pressure kPa
1-31-2018	0.59	43.79	0.21	18.40		422.79	0.36		6.71	1,200.00
2-28-2018	0.50	43.80	0.19	18.40		422.79	0.37		6.71	1,200.00
3-31-2018	1.90	43.86	5.27	18.57		422.79	2.78		6.68	1,200.00
4-30-2018	3.32	43.96	20.97	19.20		422.79	6.31		6.61	1,200.00
5-31-2018	2.25	44.03	23.48	19.92		422.79	10.44		6.52	1,200.00
6-30-2018	2.11	44.10	22.64	20.60		422.79	10.74		6.45	533.33
7-31-2018	1.19	44.13	15.78	21.09		422.79	13.22		6.40	200.00
8-31-2018	1.70	44.19	23.51	21.82		422.79	13.82		6.32	200.00
9-30-2018	1.76	44.24	22.77	22.50		422.79	12.93		6.26	133.33
10-31-2018	3.10	44.33	23.76	23.24		422.79	7.65		6.18	-
11-30-2018	0.78	44.36	4.78	23.38		422.79	6.14		6.16	-
12-31-2018	0.97	44.39	8.39	23.64		422.79	8.68		6.14	-



Daly Unit No. 3

Pattern P-08 - 00/14-11-010-28W1/00

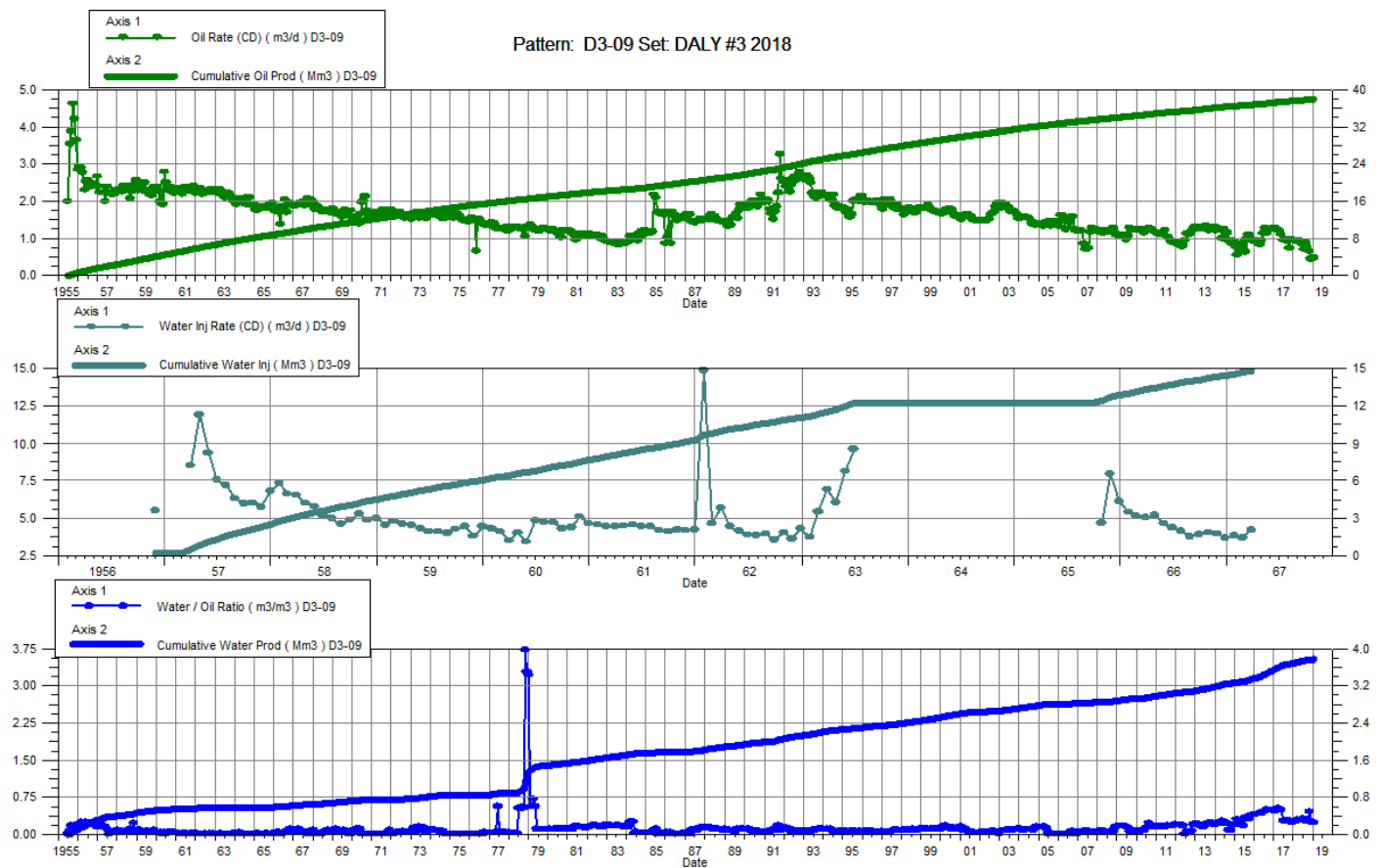
Date	Oil Rate (CD) m3/d	Cum Oil Prod Mm3	Water Rate (CD) m3/d	Cum Water Prod Mm3	Water Inj Rate (CD) m3/d	Cum Water Inj Mm3	Water Oil Ratio m3/m3	Voidage Replacement Ratio	Cum Voidage Replacemt Ratio	Water Inj Pressure kPa
1-31-2018	1.17	58.45	3.77	51.24		349.69	3.21		3.16	-
2-28-2018	1.10	58.48	2.11	51.30		349.69	1.92		3.15	-
3-31-2018	1.08	58.52	2.20	51.37		349.69	2.04		3.15	-
4-30-2018	1.12	58.55	2.28	51.43		349.69	2.04		3.15	-
5-31-2018	1.04	58.58	2.19	51.50		349.69	2.11		3.14	-
6-30-2018	1.39	58.62	8.96	51.77		349.69	6.45		3.14	-
7-31-2018	1.36	58.67	10.39	52.09		349.69	7.64		3.13	-
8-31-2018	1.78	58.72	14.05	52.53		349.69	7.89		3.11	-
9-30-2018	1.76	58.77	16.70	53.03		349.69	9.50		3.10	-
10-31-2018	1.80	58.83	16.70	53.55		349.69	9.26		3.08	-
11-30-2018	1.70	58.88	16.10	54.03		349.69	9.50		3.07	-
12-31-2018	1.87	58.94	17.00	54.56		349.69	9.08		3.05	-



Daly Unit No. 3

Pattern P-09 - 00/16-11-010-28W1/00

Date	Oil Rate (CD) m3/d	Cum Oil Prod Mm3	Water Rate (CD) m3/d	Cum Water Prod Mm3	Water Inj Rate (CD) m3/d	Cum Water Inj Mm3	Water Oil Ratio m3/m3	Voidage Replacement Ratio	Cum Voidage Replacemt Ratio	Water Inj Pressure kPa
1-31-2018	0.94	37.70	0.26	3.68		14.84	0.28		0.35	--
2-28-2018	0.93	37.73	0.24	3.69		14.84	0.26		0.35	--
3-31-2018	0.94	37.76	0.27	3.70		14.84	0.29		0.35	--
4-30-2018	0.95	37.79	0.26	3.70		14.84	0.27		0.35	--
5-31-2018	0.91	37.82	0.27	3.71		14.84	0.30		0.35	--
6-30-2018	0.84	37.84	0.26	3.72		14.84	0.31		0.35	--
7-31-2018	0.71	37.86	0.20	3.73		14.84	0.29		0.35	--
8-31-2018	0.89	37.89	0.27	3.74		14.84	0.30		0.35	--
9-30-2018	0.75	37.91	0.19	3.74		14.84	0.26		0.35	--
10-31-2018	0.65	37.93	0.30	3.75		14.84	0.47		0.35	--
11-30-2018	0.45	37.95	0.12	3.75		14.84	0.27		0.35	--
12-31-2018	0.47	37.96	0.11	3.76		14.84	0.24		0.35	--

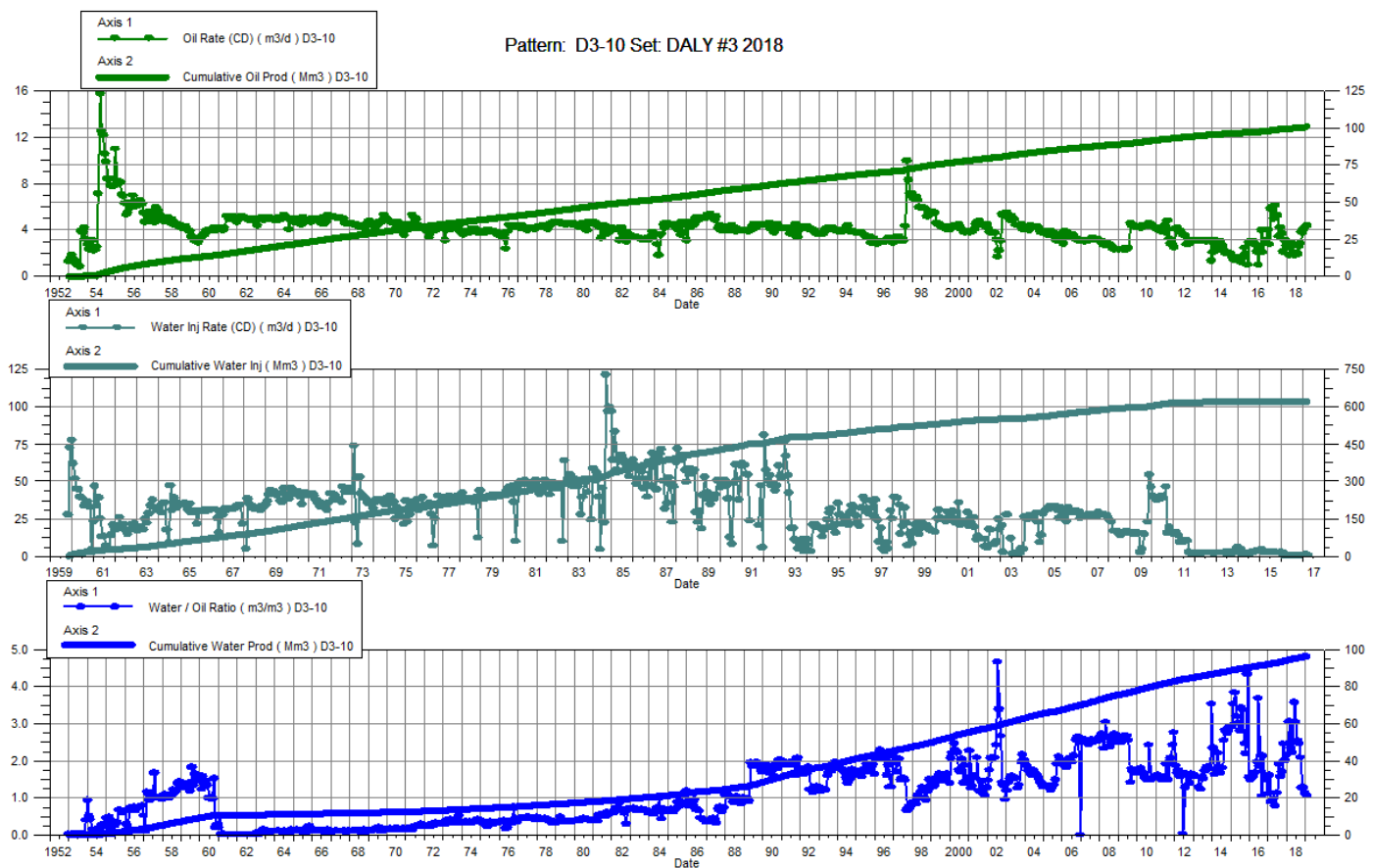


Daly Unit No. 3

Pattern P-10 – 00/14-12-010-28W1/00

P-10 – B0/14-12-010-28W1/00

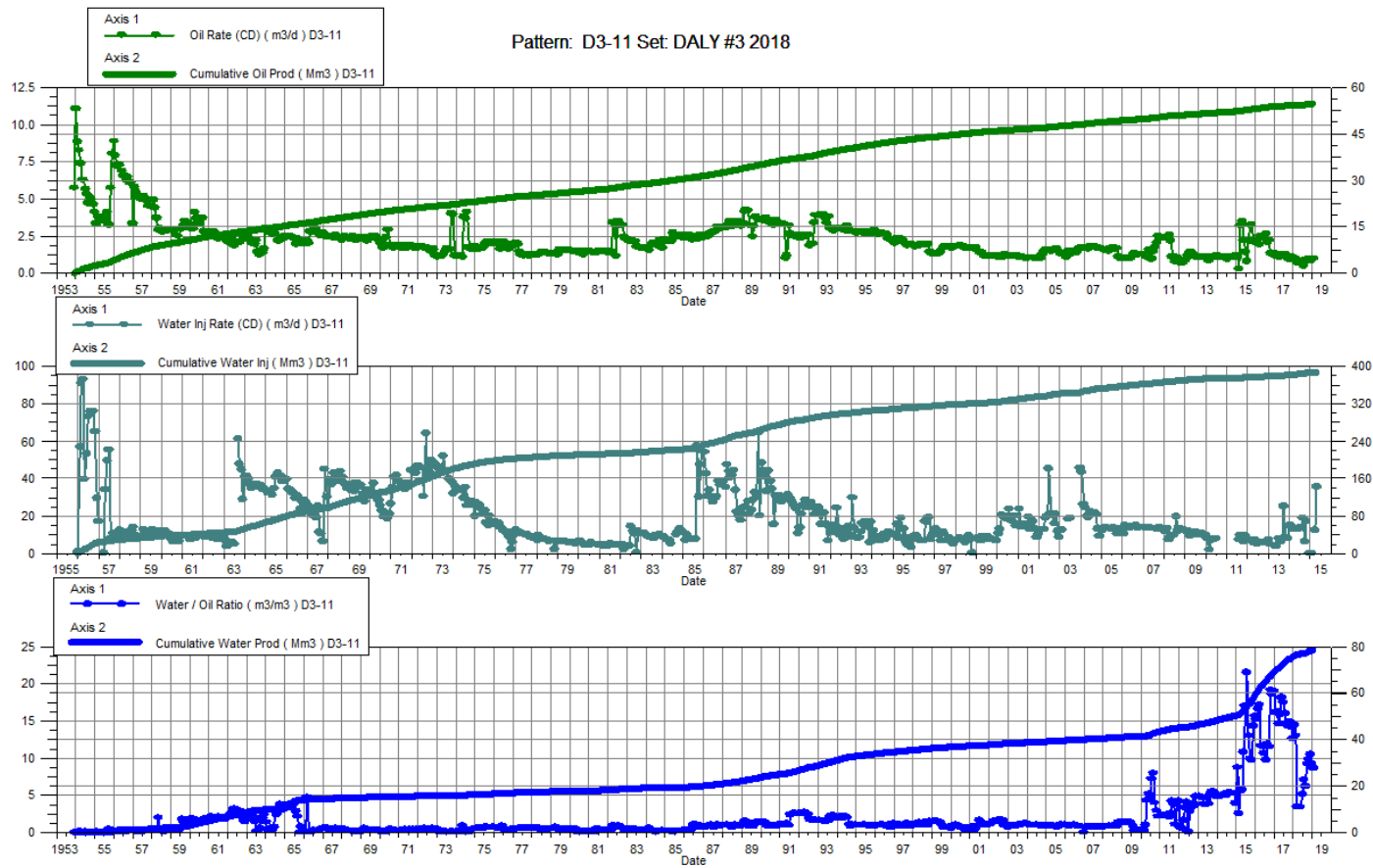
Date	Oil Rate (CD) m3/d	Cum Oil Prod Mm3	Water Rate (CD) m3/d	Cum Water Prod Mm3	Water Inj Rate (CD) m3/d	Cum Water Inj Mm3	Water Oil Ratio m3/m3	Voidage Replacement Ratio	Cum Voidage Replacemt Ratio	Water Inj Pressure kPa	Water Inj Pressure kPa
1-31-2018	2.68	99.79	6.58	94.03		623.82	2.46		3.19	2,200.00	2,000.00
2-28-2018	1.86	99.84	5.67	94.19		623.82	3.05		3.18	2,200.00	2,000.00
3-31-2018	2.67	99.92	6.28	94.38		623.82	2.35		3.18	2,200.00	2,000.00
4-30-2018	2.82	100.01	6.27	94.57		623.82	2.23		3.18	2,200.00	2,000.00
5-31-2018	1.80	100.06	6.42	94.77		623.82	3.56		3.17	2,200.00	2,000.00
6-30-2018	2.08	100.13	6.30	94.96		623.82	3.03		3.17	1,433.33	700.00
7-31-2018	1.92	100.18	4.88	95.11		623.82	2.54		3.16	1,050.00	50.00
8-31-2018	2.61	100.27	6.42	95.31		623.82	2.46		3.16	1,050.00	50.00
9-30-2018	2.85	100.35	5.93	95.49		623.82	2.08		3.15	929.82	33.33
10-31-2018	3.79	100.47	4.85	95.64		623.82	1.28		3.15	685.03	-
11-30-2018	4.09	100.59	5.19	95.79		623.82	1.27		3.15	448.16	-
12-31-2018	4.20	100.72	4.78	95.94		623.82	1.14		3.14	387.00	-



Daly Unit No. 3

Pattern P-11 - 00/12-11-010-28W1/00

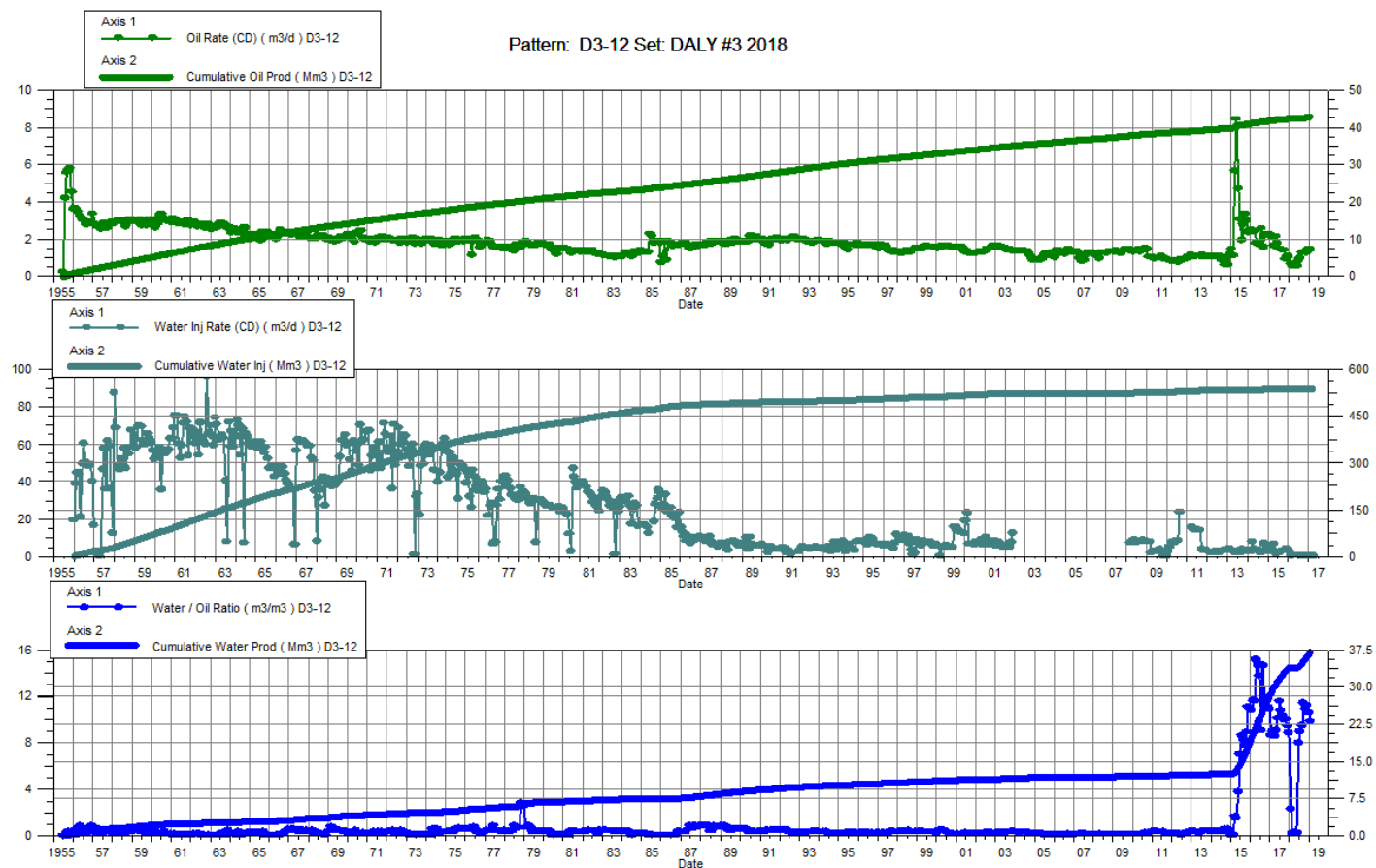
Date	Oil Rate (CD) m3/d	Cum Oil Prod Mm3	Water Rate (CD) m3/d	Cum Water Prod Mm3	Water Inj Rate (CD) m3/d	Cum Water Inj Mm3	Water Oil Ratio m3/m3	Voidage Replacement Ratio	Cum Voidage Replacemt Ratio	Water Inj Pressure kPa
1-31-2018	1.02	54.43	14.76	76.03		388.55	14.50		2.96	-
2-28-2018	0.99	54.46	12.88	76.39		388.55	13.05		2.95	-
3-31-2018	0.75	54.48	2.62	76.47		388.55	3.48		2.94	-
4-30-2018	0.80	54.50	2.70	76.55		388.55	3.39		2.94	-
5-31-2018	0.77	54.53	2.63	76.63		388.55	3.40		2.94	-
6-30-2018	0.81	54.55	4.18	76.76		388.55	5.16		2.94	-
7-31-2018	0.54	54.57	3.83	76.88		388.55	7.05		2.93	-
8-31-2018	0.90	54.60	5.59	77.05		388.55	6.23		2.93	-
9-30-2018	0.91	54.62	8.42	77.30		388.55	9.21		2.92	-
10-31-2018	0.99	54.66	9.72	77.60		388.55	9.78		2.92	-
11-30-2018	0.89	54.68	9.33	77.88		388.55	10.54		2.91	-
12-31-2018	1.00	54.71	9.29	78.17		388.55	9.30		2.90	-



Daly Unit No. 3

Pattern P-12 - 00/10-11-010-28W1/00

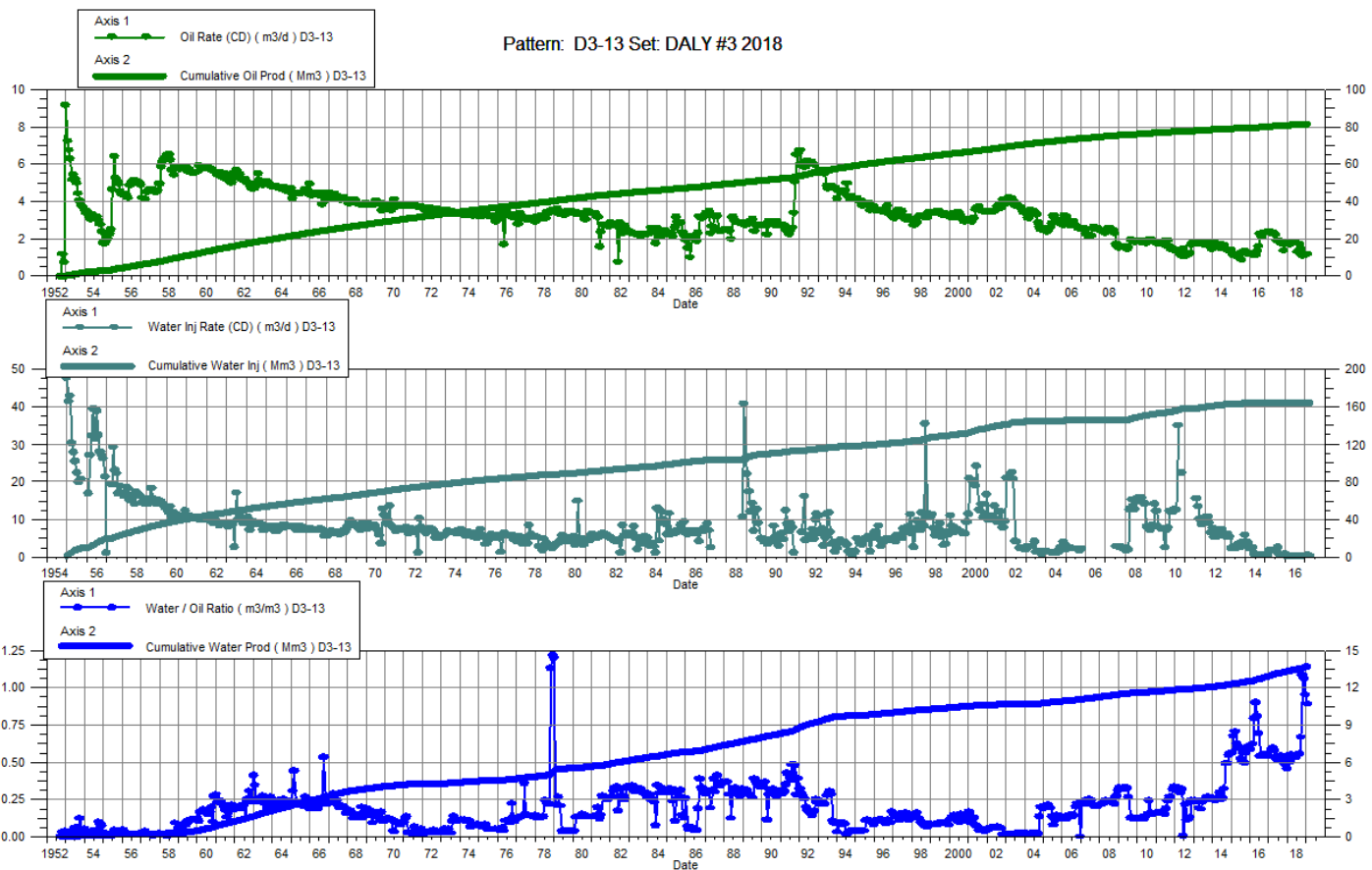
Date	Oil Rate (CD) m3/d	Cum Oil Prod Mm3	Water Rate (CD) m3/d	Cum Water Prod Mm3	Water Inj Rate (CD) m3/d	Cum Water Inj Mm3	Water Oil Ratio m3/m3	Voidage Replacement Ratio	Cum Voidage Replacemt Ratio	Water Inj Pressure kPa
1-31-2018	0.69	42.49	1.58	33.76		538.13	2.30		6.98	-
2-28-2018	0.62	42.51	0.14	33.77		538.13	0.23		6.98	-
3-31-2018	0.63	42.53	0.16	33.77		538.13	0.25		6.98	-
4-30-2018	0.64	42.55	0.15	33.77		538.13	0.24		6.98	-
5-31-2018	0.59	42.57	0.16	33.78		538.13	0.27		6.97	-
6-30-2018	0.88	42.59	7.04	33.99		538.13	7.98		6.95	-
7-31-2018	1.00	42.62	8.93	34.27		538.13	8.97		6.93	-
8-31-2018	1.28	42.66	12.11	34.64		538.13	9.48		6.89	-
9-30-2018	1.31	42.70	14.90	35.09		538.13	11.40		6.85	-
10-31-2018	1.36	42.75	14.88	35.55		538.13	10.93		6.80	-
11-30-2018	1.28	42.78	14.35	35.98		538.13	11.20		6.76	-
12-31-2018	1.45	42.83	15.39	36.46		538.13	10.62		6.72	-



Daly Unit No. 3

Pattern P-13 - 00/12-12-010-28W1/00

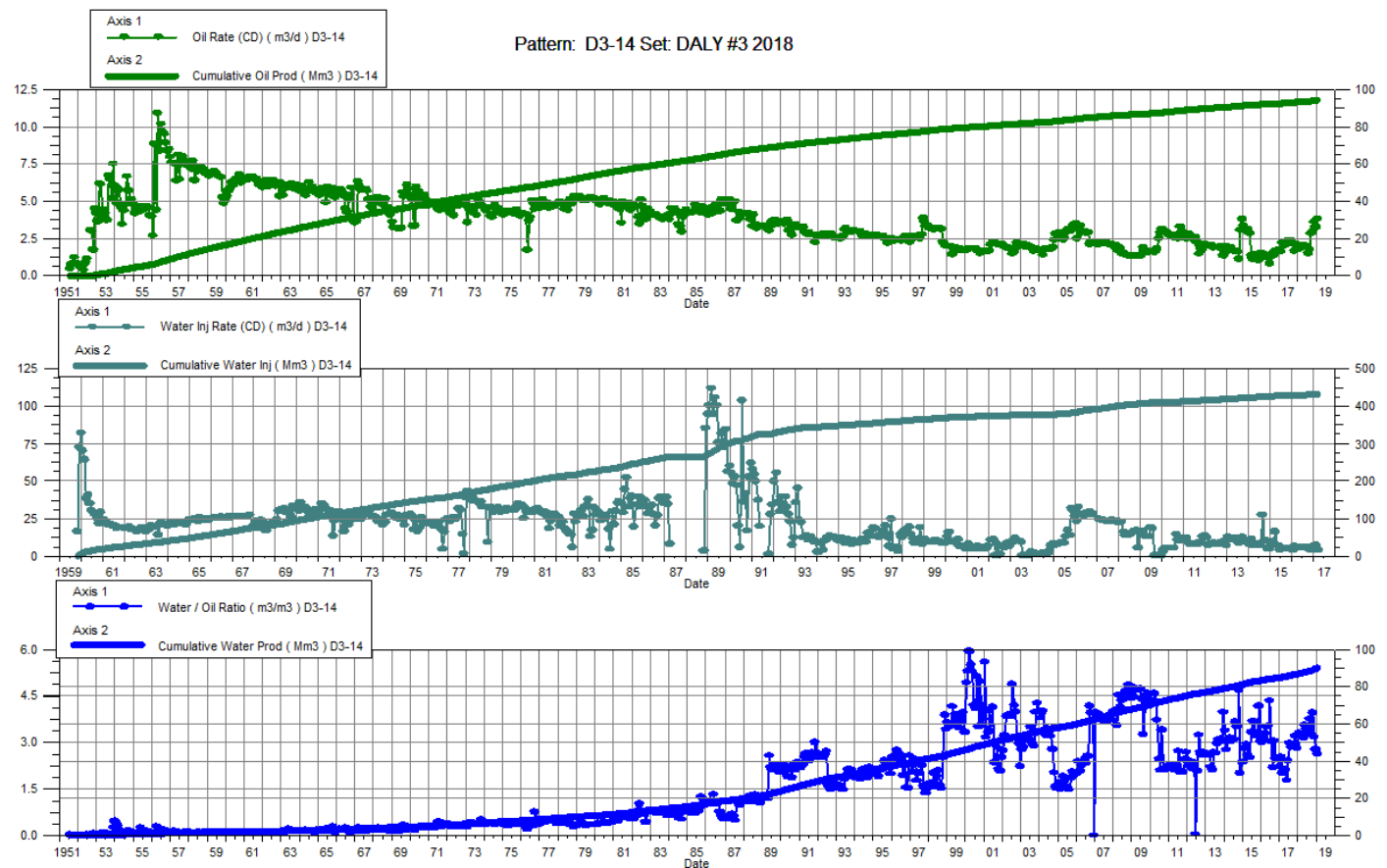
Date	Oil Rate (CD) m3/d	Cum Oil Prod Mm3	Water Rate (CD) m3/d	Cum Water Prod Mm3	Water Inj Rate (CD) m3/d	Cum Water Inj Mm3	Water Oil Ratio m3/m3	Voidage Replacement Ratio	Cum Voidage Replacemt Ratio	Water Inj Pressure kPa
1-31-2018	1.76	81.17	0.95	13.31		165.40	0.54		1.72	3,800.00
2-28-2018	1.72	81.22	0.86	13.33		165.40	0.50		1.72	3,800.00
3-31-2018	1.76	81.28	0.97	13.36		165.40	0.55		1.72	3,800.00
4-30-2018	1.78	81.33	0.94	13.39		165.40	0.53		1.72	3,800.00
5-31-2018	1.82	81.39	0.98	13.42		165.40	0.54		1.72	3,800.00
6-30-2018	1.79	81.44	0.96	13.45		165.40	0.53		1.72	2,263.33
7-31-2018	1.30	81.48	0.72	13.47		165.40	0.55		1.71	1,495.00
8-31-2018	1.73	81.53	0.96	13.50		165.40	0.56		1.71	1,495.00
9-30-2018	1.45	81.58	0.97	13.53		165.40	0.67		1.71	1,801.05
10-31-2018	1.10	81.61	1.19	13.57		165.40	1.08		1.71	2,370.90
11-30-2018	1.12	81.65	1.18	13.60		165.40	1.06		1.71	1,068.69
12-31-2018	1.15	81.68	1.09	13.63		165.40	0.95		1.71	1,034.21



Daly Unit No. 3

Pattern P-14 - 00/10-12-010-28W1/00

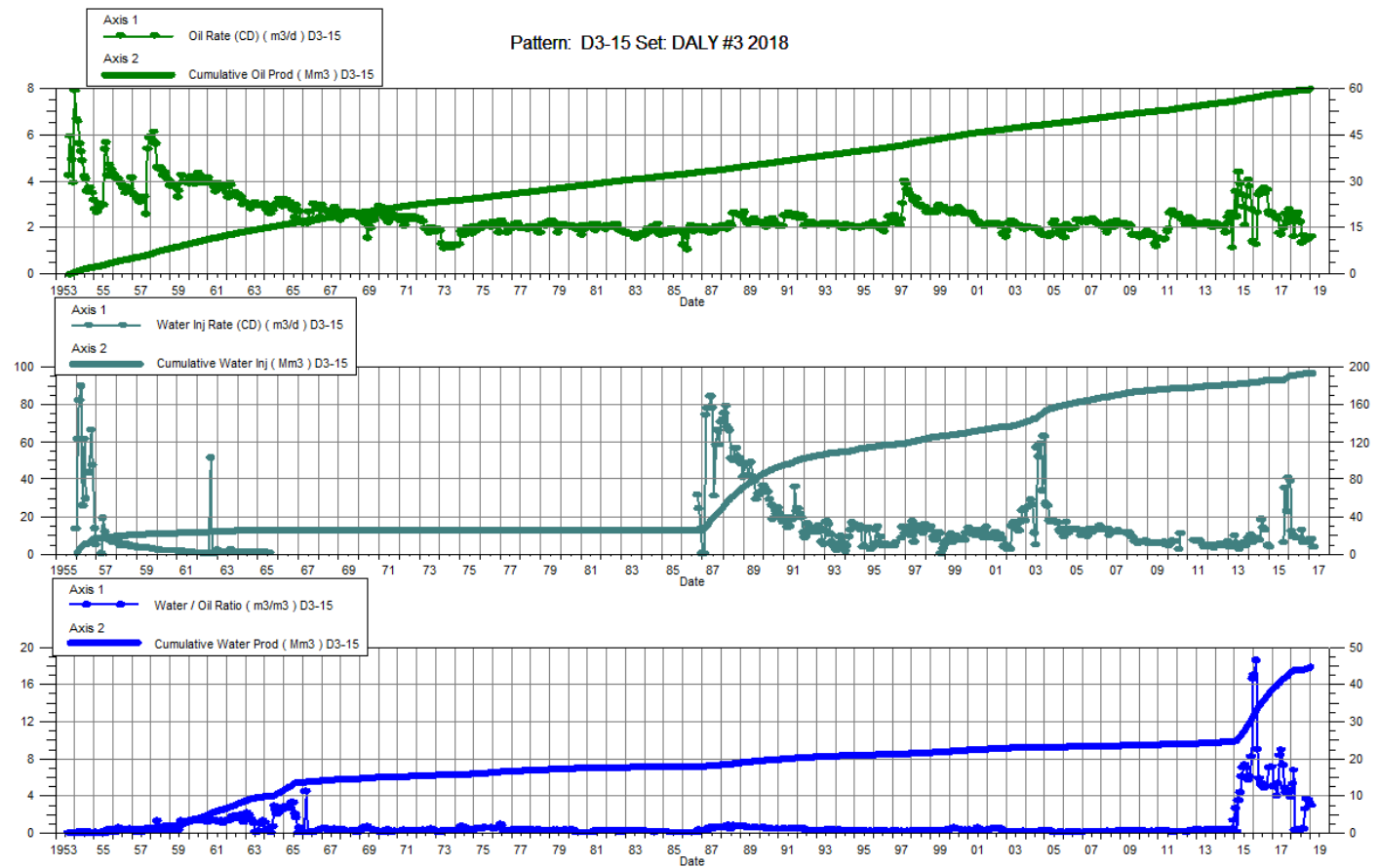
Date	Oil Rate (CD) m3/d	Cum Oil Prod Mm3	Water Rate (CD) m3/d	Cum Water Prod Mm3	Water Inj Rate (CD) m3/d	Cum Water Inj Mm3	Water Oil Ratio m3/m3	Voidage Replacement Ratio	Cum Voidage Replacemt Ratio	Water Inj Pressure kPa
1-31-2018	2.03	93.57	6.72	86.75		432.92	3.31		2.38	2,700.00
2-28-2018	1.84	93.62	6.02	86.92		432.92	3.28		2.37	2,700.00
3-31-2018	2.06	93.68	6.63	87.12		432.92	3.22		2.37	2,700.00
4-30-2018	2.10	93.74	6.60	87.32		432.92	3.14		2.37	2,700.00
5-31-2018	1.94	93.80	6.89	87.54		432.92	3.55		2.36	2,700.00
6-30-2018	1.97	93.86	6.72	87.74		432.92	3.41		2.36	2,366.67
7-31-2018	1.51	93.91	5.15	87.90		432.92	3.41		2.36	2,200.00
8-31-2018	1.78	93.97	6.65	88.10		432.92	3.74		2.35	2,200.00
9-30-2018	2.87	94.05	9.33	88.38		432.92	3.25		2.35	2,156.14
10-31-2018	3.00	94.14	11.83	88.75		432.92	3.94		2.34	2,046.18
11-30-2018	3.61	94.25	11.37	89.09		432.92	3.15		2.34	1,310.00
12-31-2018	3.28	94.35	9.13	89.37		432.92	2.79		2.33	1,536.86



Daly Unit No. 3

Pattern P-15 - 00/06-11-010-28W1/00

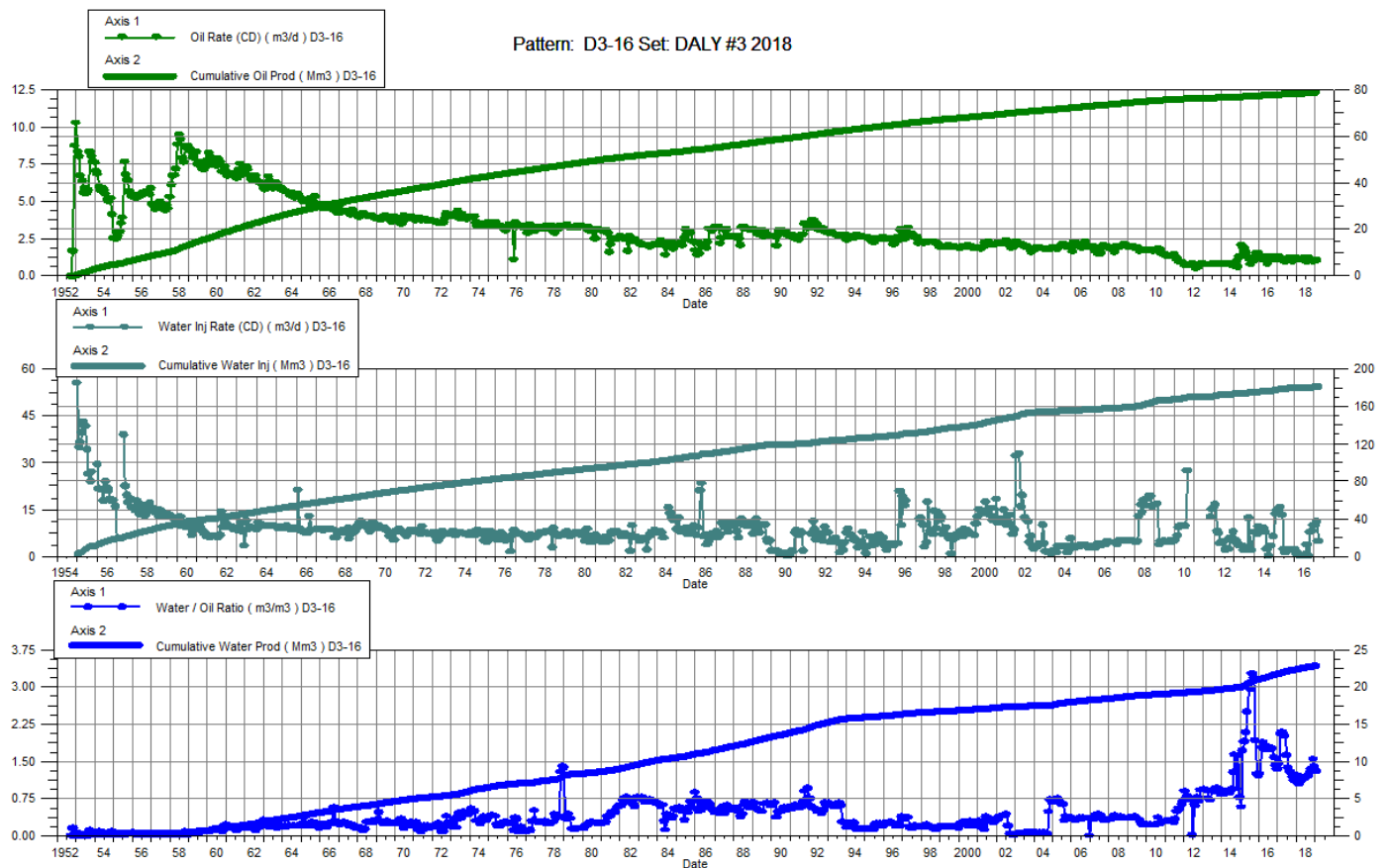
Date	Oil Rate (CD) m3/d	Cum Oil Prod Mm3	Water Rate (CD) m3/d	Cum Water Prod Mm3	Water Inj Rate (CD) m3/d	Cum Water Inj Mm3	Water Oil Ratio m3/m3	Voidage Replacement Ratio	Cum Voidage Replacemt Ratio	Water Inj Pressure kPa
1-31-2018	2.34	59.11	12.43	43.45		194.67	5.31		1.88	-
2-28-2018	1.63	59.15	11.01	43.75		194.67	6.77		1.87	-
3-31-2018	2.45	59.23	0.83	43.78		194.67	0.34		1.87	-
4-30-2018	2.58	59.31	0.79	43.80		194.67	0.30		1.87	-
5-31-2018	2.64	59.39	0.82	43.83		194.67	0.31		1.87	-
6-30-2018	2.25	59.45	0.78	43.85		194.67	0.35		1.86	-
7-31-2018	1.36	59.50	0.60	43.87		194.67	0.44		1.86	-
8-31-2018	1.68	59.55	0.76	43.89		194.67	0.45		1.86	-
9-30-2018	1.46	59.59	3.76	44.01		194.67	2.58		1.86	-
10-31-2018	1.48	59.64	5.48	44.18		194.67	3.70		1.86	-
11-30-2018	1.52	59.68	5.43	44.34		194.67	3.58		1.85	-
12-31-2018	1.57	59.73	5.00	44.50		194.67	3.19		1.85	-



Daly Unit No. 3

Pattern P-16 - 00/08-11-010-28W1/00

Date	Oil Rate (CD) m3/d	Cum Oil Prod Mm3	Water Rate (CD) m3/d	Cum Water Prod Mm3	Water Inj Rate (CD) m3/d	Cum Water Inj Mm3	Water Oil Ratio m3/m3	Voidage Replacement Ratio	Cum Voidage Replacemt Ratio	Water Inj Pressure kPa
1-31-2018	1.18	78.50	1.44	22.35		182.06	1.22		1.78	1,310.00
2-28-2018	1.09	78.53	1.14	22.38		182.06	1.04		1.78	1,310.00
3-31-2018	1.17	78.57	1.35	22.42		182.06	1.16		1.78	1,310.00
4-30-2018	1.17	78.60	1.30	22.46		182.06	1.10		1.78	1,310.00
5-31-2018	1.25	78.64	1.44	22.51		182.06	1.16		1.77	1,310.00
6-30-2018	1.25	78.68	1.45	22.55		182.06	1.16		1.77	436.67
7-31-2018	0.93	78.71	1.12	22.58		182.06	1.20		1.77	-
8-31-2018	1.21	78.75	1.46	22.63		182.06	1.21		1.77	-
9-30-2018	1.14	78.78	1.45	22.67		182.06	1.27		1.77	-
10-31-2018	1.04	78.81	1.40	22.72		182.06	1.35		1.77	-
11-30-2018	0.99	78.84	1.53	22.76		182.06	1.54		1.77	-
12-31-2018	1.01	78.87	1.40	22.81		182.06	1.39		1.76	-

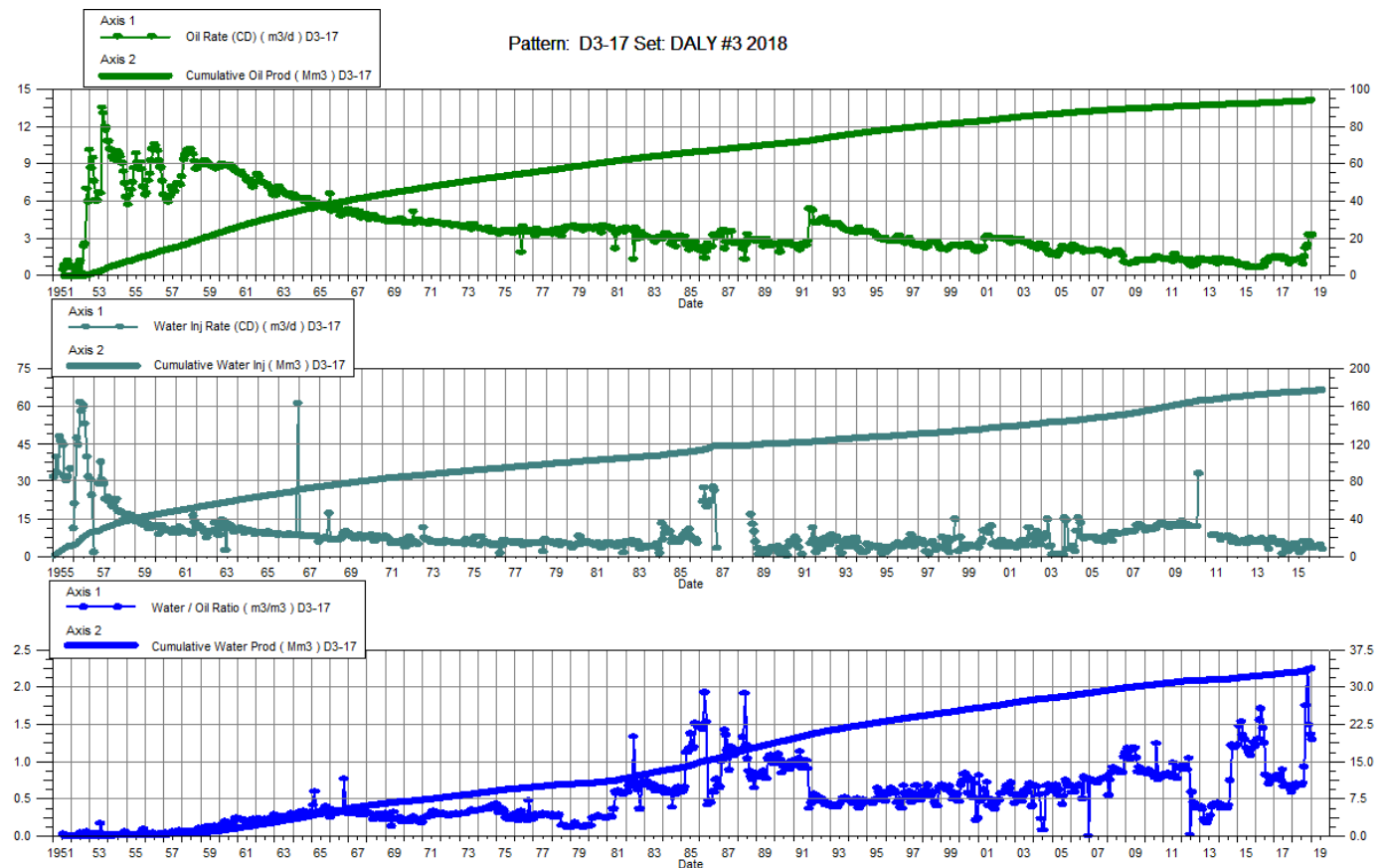


Daly Unit No. 3

Pattern P-17 – 00/06-12-010-28W1/00

P-17 – A0/05-12-010-28W1/00

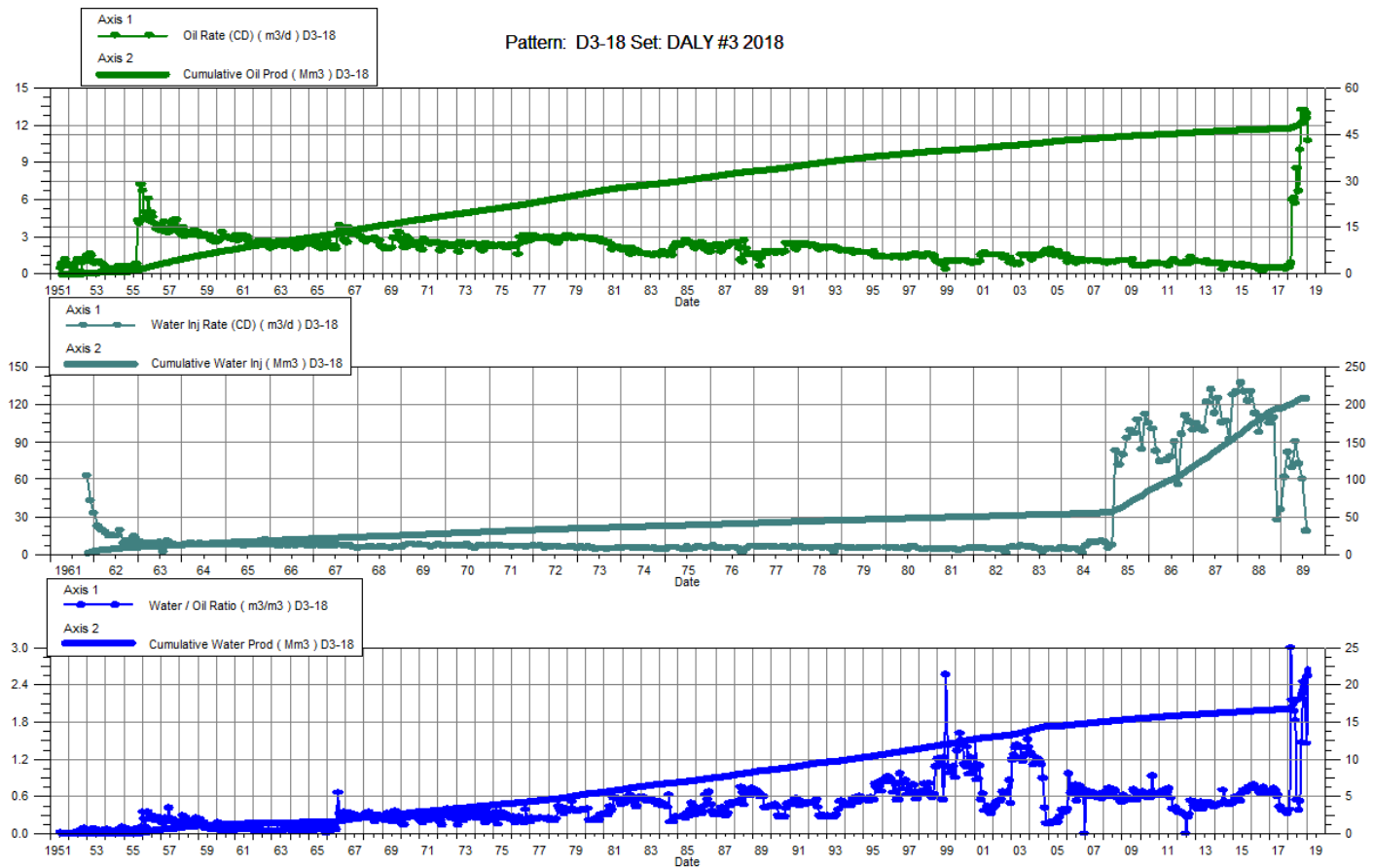
Date	Oil Rate (CD) m3/d	Cum Oil Prod Mm3	Water Rate (CD) m3/d	Cum Water Prod Mm3	Water Inj Rate (CD) m3/d	Cum Water Inj Mm3	Water Oil Ratio m3/m3	Voidage Replacement Ratio	Cum Voidage Replacemt Ratio	Water Inj Pressure kPa	Water Inj Pressure kPa
1-31-2018	1.31	93.70	0.90	32.87		178.00	0.69		1.39	2,600.00	2,500.00
2-28-2018	1.25	93.73	0.80	32.89		178.00	0.64		1.39	2,600.00	2,500.00
3-31-2018	1.31	93.77	0.92	32.92		178.00	0.70		1.39	2,600.00	2,500.00
4-30-2018	1.32	93.81	0.89	32.95		178.00	0.67		1.39	2,600.00	2,500.00
5-31-2018	1.35	93.85	0.93	32.97		178.00	0.69		1.38	2,600.00	2,500.00
6-30-2018	1.33	93.89	0.91	33.00		178.00	0.68		1.38	1,860.00	1,733.33
7-31-2018	0.96	93.92	0.68	33.02		178.00	0.71		1.38	1,490.00	1,350.00
8-31-2018	1.55	93.97	1.44	33.07		178.00	0.93		1.38	1,490.00	1,350.00
9-30-2018	2.25	94.04	3.92	33.19		178.00	1.75		1.38	1,338.07	1,244.74
10-31-2018	2.48	94.12	5.54	33.36		178.00	2.23		1.38	1,027.54	1,023.09
11-30-2018	3.31	94.22	4.92	33.50		178.00	1.49		1.37	827.37	620.53
12-31-2018	3.26	94.32	4.45	33.64		178.00	1.37		1.37	742.85	509.32



Daly Unit No. 3

Pattern P-18 - 00/08-12-010-28W1/00

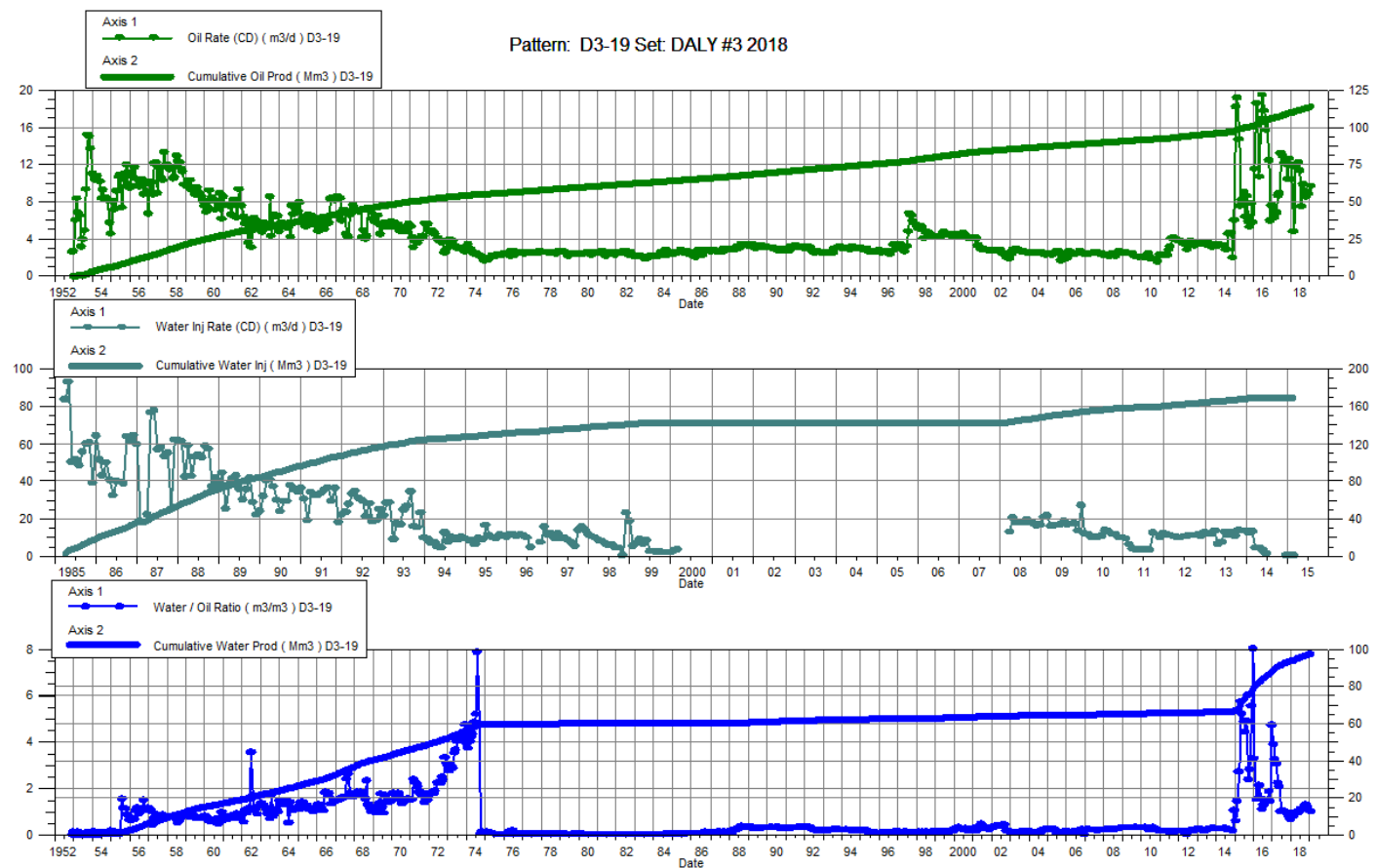
Date	Oil Rate (CD) m3/d	Cum Oil Prod Mm3	Water Rate (CD) m3/d	Cum Water Prod Mm3	Water Inj Rate (CD) m3/d	Cum Water Inj Mm3	Water Oil Ratio m3/m3	Voidage Replacement Ratio	Cum Voidage Replacemt Ratio	Water Inj Pressure kPa
1-31-2018	0.60	47.14	0.23	16.68		209.39	0.39		3.24	--
2-28-2018	0.90	47.16	2.68	16.75		209.39	2.99		3.23	--
3-31-2018	5.98	47.35	12.85	17.15		209.39	2.15		3.20	--
4-30-2018	6.14	47.53	12.11	17.52		209.39	1.97		3.17	--
5-31-2018	5.73	47.71	10.44	17.84		209.39	1.82		3.15	--
6-30-2018	8.51	47.97	4.64	17.98		209.39	0.55		3.13	--
7-31-2018	6.69	48.17	2.56	18.06		209.39	0.38		3.12	--
8-31-2018	10.04	48.48	5.26	18.22		209.39	0.52		3.10	--
9-30-2018	13.25	48.88	19.46	18.81		209.39	1.47		3.05	--
10-31-2018	12.16	49.26	29.76	19.73		209.39	2.45		2.99	--
11-30-2018	13.26	49.66	29.92	20.63		209.39	2.26		2.94	--
12-31-2018	12.95	50.06	18.81	21.21		209.39	1.45		2.90	--



Daly Unit No. 3

Pattern P-19 - 00/13-02-010-28W1/00

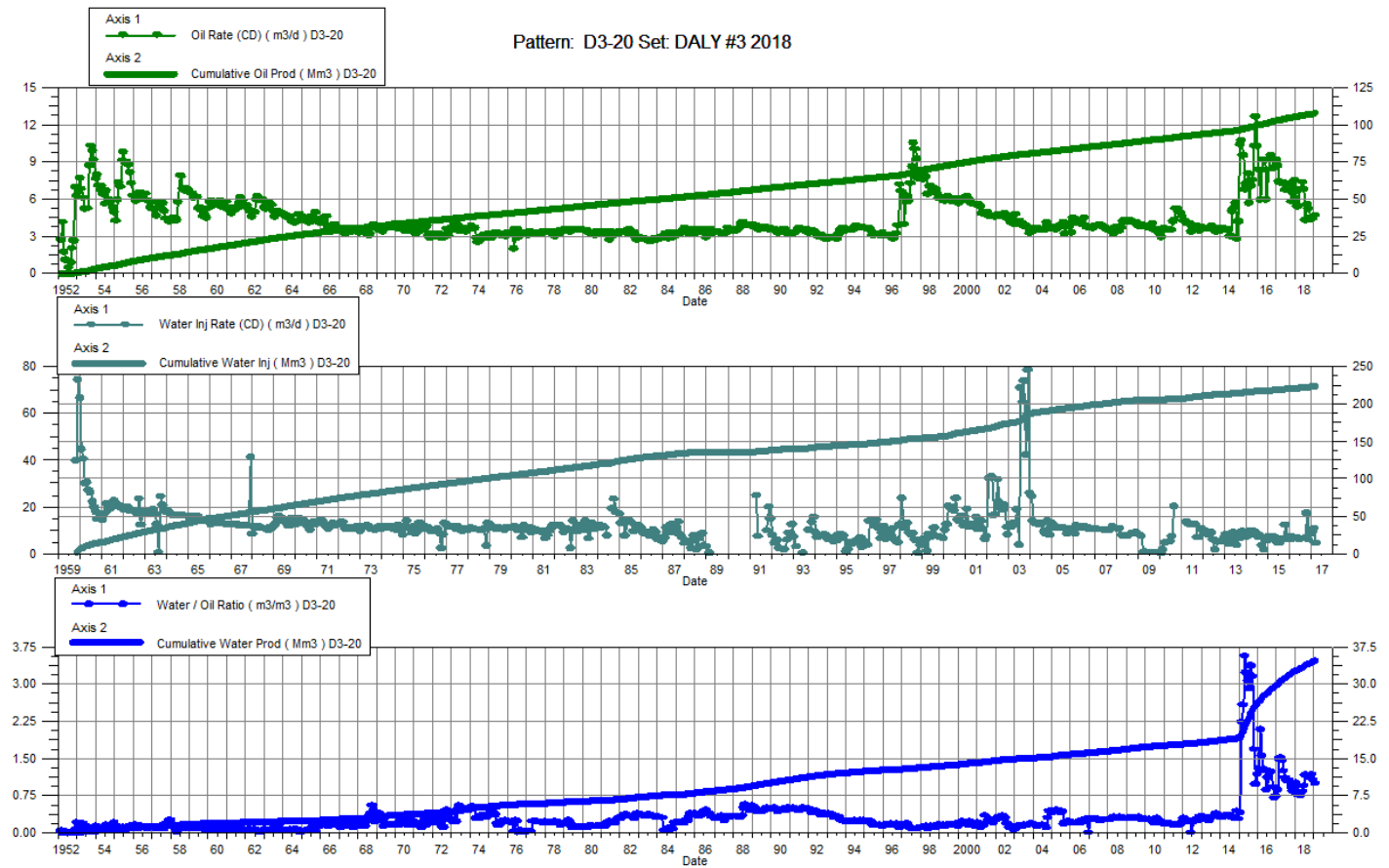
Date	Oil Rate (CD) m3/d	Cum Oil Prod Mm3	Water Rate (CD) m3/d	Cum Water Prod Mm3	Water Inj Rate (CD) m3/d	Cum Water Inj Mm3	Water Oil Ratio m3/m3	Voidage Replacement Ratio	Cum Voidage Replacemt Ratio	Water Inj Pressure kPa
1-31-2018	10.47	110.41	9.21	93.77		170.05	0.88		0.82	-
2-28-2018	4.81	110.55	3.87	93.88		170.05	0.81		0.82	-
3-31-2018	11.78	110.91	11.73	94.24		170.05	1.00		0.82	-
4-30-2018	12.02	111.27	11.36	94.58		170.05	0.95		0.82	-
5-31-2018	12.28	111.65	11.85	94.95		170.05	0.97		0.82	-
6-30-2018	11.33	111.99	11.42	95.29		170.05	1.01		0.81	-
7-31-2018	7.50	112.23	8.50	95.56		170.05	1.13		0.81	-
8-31-2018	9.89	112.53	11.35	95.91		170.05	1.15		0.81	-
9-30-2018	9.20	112.81	11.13	96.24		170.05	1.21		0.81	-
10-31-2018	8.53	113.07	11.18	96.59		170.05	1.31		0.80	-
11-30-2018	9.05	113.34	10.98	96.92		170.05	1.21		0.80	-
12-31-2018	8.83	113.62	9.47	97.21		170.05	1.07		0.80	-



Daly Unit No. 3

Pattern P-20 - 00/02-11-010-28W1/00

Date	Oil Rate (CD) m3/d	Cum Oil Prod Mm3	Water Rate (CD) m3/d	Cum Water Prod Mm3	Water Inj Rate (CD) m3/d	Cum Water Inj Mm3	Water Oil Ratio m3/m3	Voidage Replacement Ratio	Cum Voidage Replacemt Ratio	Water Inj Pressure kPa
1-31-2018	6.08	105.67	6.10	32.69		224.39	1.00		1.60	2,300.00
2-28-2018	5.40	105.82	4.15	32.81		224.39	0.77		1.60	2,300.00
3-31-2018	6.77	106.03	5.45	32.98		224.39	0.81		1.59	2,300.00
4-30-2018	6.83	106.23	5.13	33.13		224.39	0.75		1.59	2,300.00
5-31-2018	7.38	106.46	6.14	33.32		224.39	0.83		1.58	2,300.00
6-30-2018	6.78	106.67	6.37	33.51		224.39	0.94		1.58	1,433.33
7-31-2018	4.31	106.80	5.01	33.67		224.39	1.16		1.57	1,000.00
8-31-2018	5.57	106.97	6.39	33.86		224.39	1.15		1.57	1,000.00
9-30-2018	5.23	107.13	5.93	34.04		224.39	1.13		1.57	906.84
10-31-2018	4.52	107.27	5.03	34.20		224.39	1.11		1.56	689.47
11-30-2018	4.41	107.40	5.18	34.35		224.39	1.17		1.56	586.05
12-31-2018	4.47	107.54	4.72	34.50		224.39	1.06		1.56	398.12

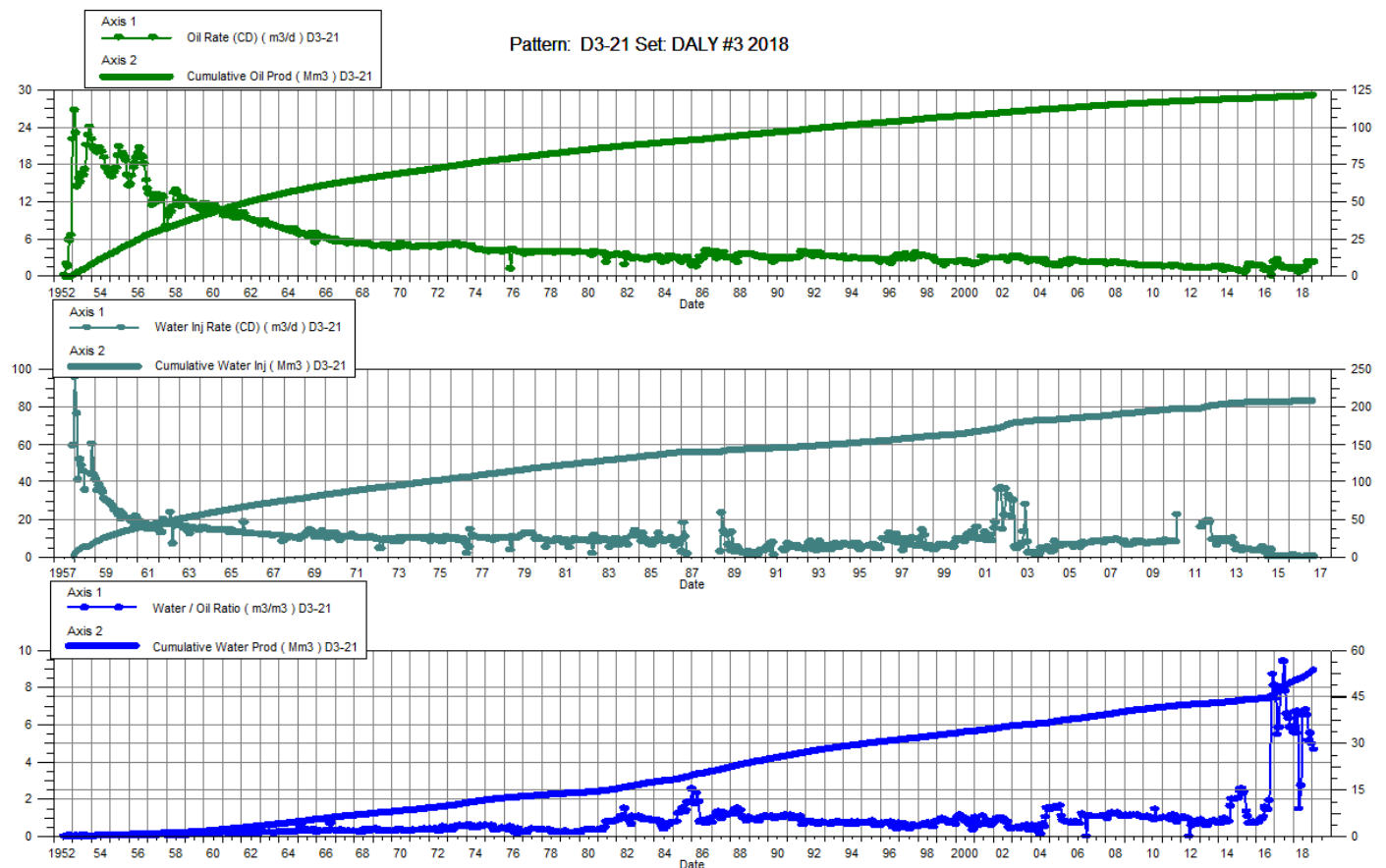


Daly Unit No. 3

Pattern P-21 - 00/04-12-010-28W1/00

P-21 – B0/05-12-010-28W1/00

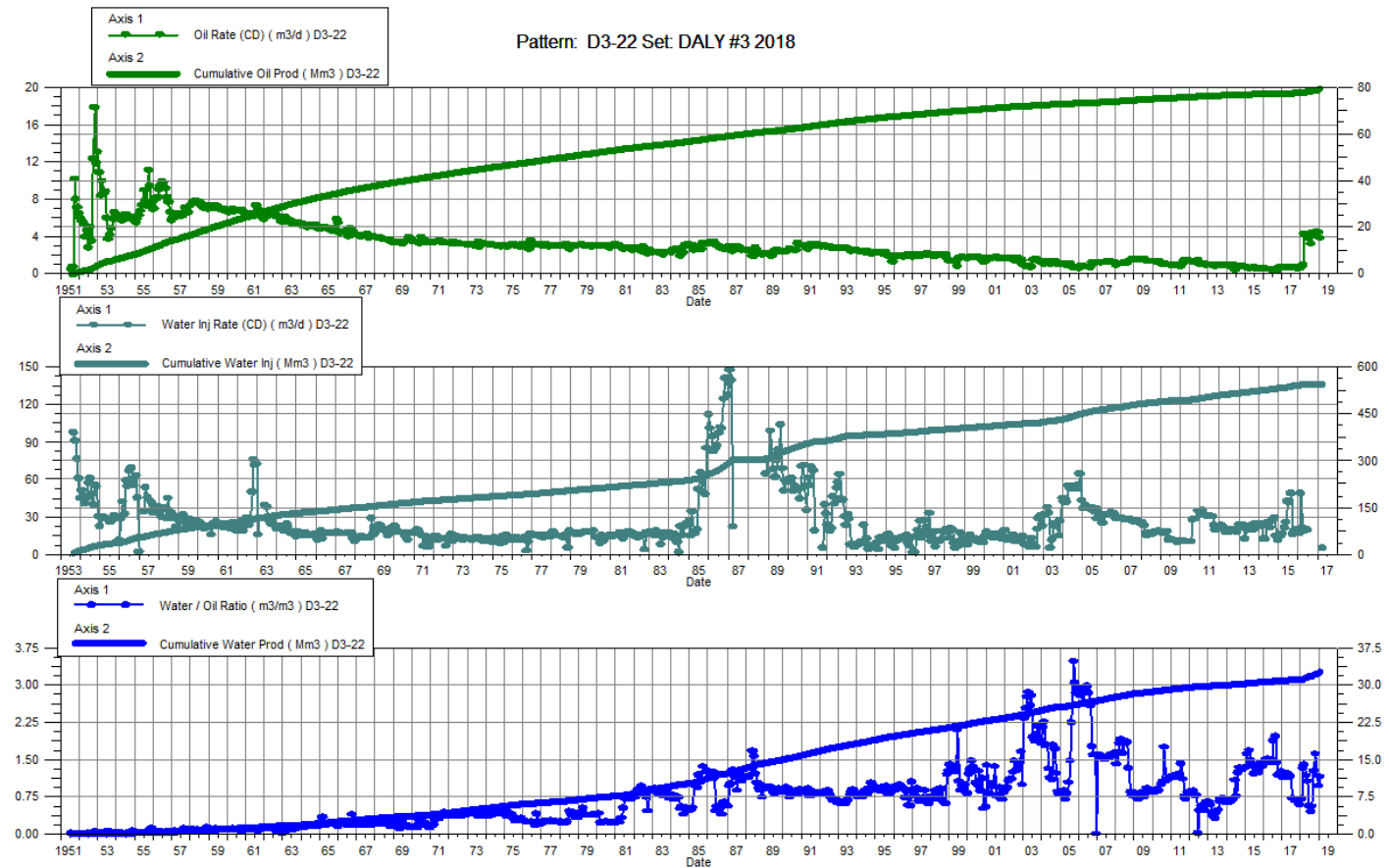
Date	Oil Rate (CD) m3/d	Cum Oil Prod Mm3	Water Rate (CD) m3/d	Cum Water Prod Mm3	Water Inj Rate (CD) m3/d	Cum Water Inj Mm3	Water Oil Ratio m3/m3	Voidage Replacement Ratio	Cum Voidage Replacemt Ratio	Water Inj Pressure kPa	Water Inj Pressure kPa
1-31-2018	1.54	121.17	10.27	50.25		208.34	6.67		1.20	3,600.00	1,400.00
2-28-2018	1.28	121.20	7.11	50.45		208.34	5.55		1.20	3,600.00	1,400.00
3-31-2018	1.53	121.25	10.26	50.77		208.34	6.70		1.20	3,600.00	1,400.00
4-30-2018	0.73	121.27	1.08	50.80		208.34	1.48		1.20	3,600.00	1,400.00
5-31-2018	0.86	121.30	2.35	50.88		208.34	2.73		1.19	3,600.00	1,400.00
6-30-2018	1.55	121.35	10.05	51.18		208.34	6.49		1.19	1,200.00	466.67
7-31-2018	1.07	121.38	7.01	51.39		208.34	6.53		1.19	-	-
8-31-2018	1.51	121.43	10.28	51.71		208.34	6.80		1.19	-	-
9-30-2018	1.62	121.48	10.56	52.03		208.34	6.53		1.19	-	-
10-31-2018	2.46	121.55	12.67	52.42		208.34	5.14		1.18	-	-
11-30-2018	2.19	121.62	12.13	52.79		208.34	5.53		1.18	-	-
12-31-2018	2.24	121.69	11.16	53.13		208.34	4.97		1.18	-	-



Daly Unit No. 3

Pattern P-22 - 00/02-12-010-28W1/00

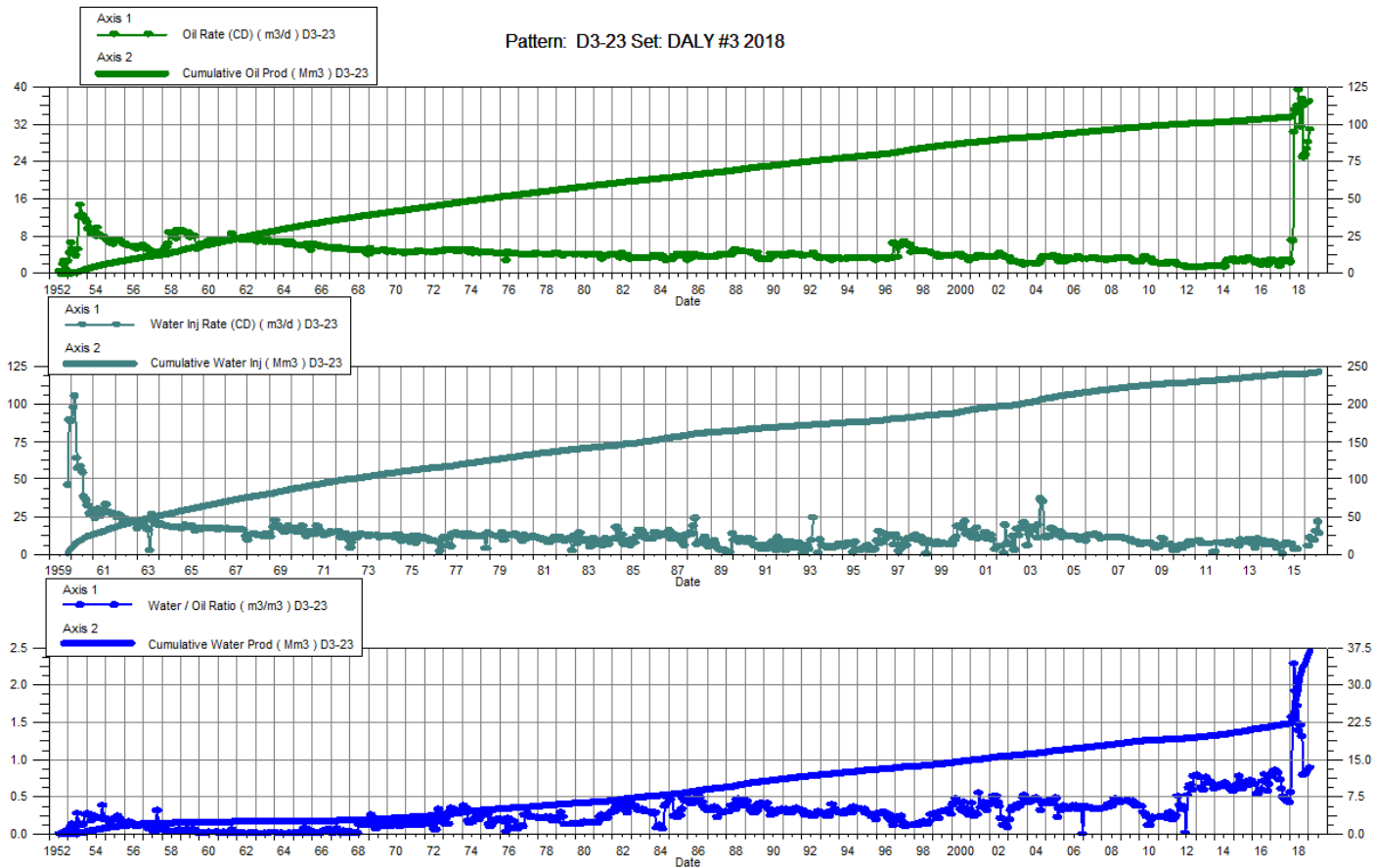
Date	Oil Rate (CD) m3/d	Cum Oil Prod Mm3	Water Rate (CD) m3/d	Cum Water Prod Mm3	Water Inj Rate (CD) m3/d	Cum Water Inj Mm3	Water Oil Ratio m3/m3	Voidage Replacement Ratio	Cum Voidage Replacemt Ratio	Water Inj Pressure kPa
1-31-2018	0.73	77.80	0.51	31.02		546.54	0.70		4.95	450.00
2-28-2018	0.96	77.83	1.28	31.05		546.54	1.32		4.95	450.00
3-31-2018	4.30	77.96	5.95	31.24		546.54	1.39		4.94	450.00
4-30-2018	4.34	78.09	5.08	31.39		546.54	1.17		4.92	450.00
5-31-2018	3.87	78.21	4.11	31.52		546.54	1.06		4.91	450.00
6-30-2018	4.23	78.34	2.41	31.59		546.54	0.57		4.90	150.00
7-31-2018	3.23	78.44	1.46	31.64		546.54	0.45		4.90	-
8-31-2018	4.42	78.58	2.48	31.71		546.54	0.56		4.89	-
9-30-2018	4.33	78.71	5.48	31.88		546.54	1.27		4.88	-
10-31-2018	4.18	78.84	6.74	32.09		546.54	1.61		4.86	-
11-30-2018	4.53	78.97	5.31	32.25		546.54	1.17		4.85	-
12-31-2018	4.44	79.11	4.29	32.38		546.54	0.97		4.84	-



Daly Unit No. 3

Pattern P-23 - 00/16-02-010-28W1/00

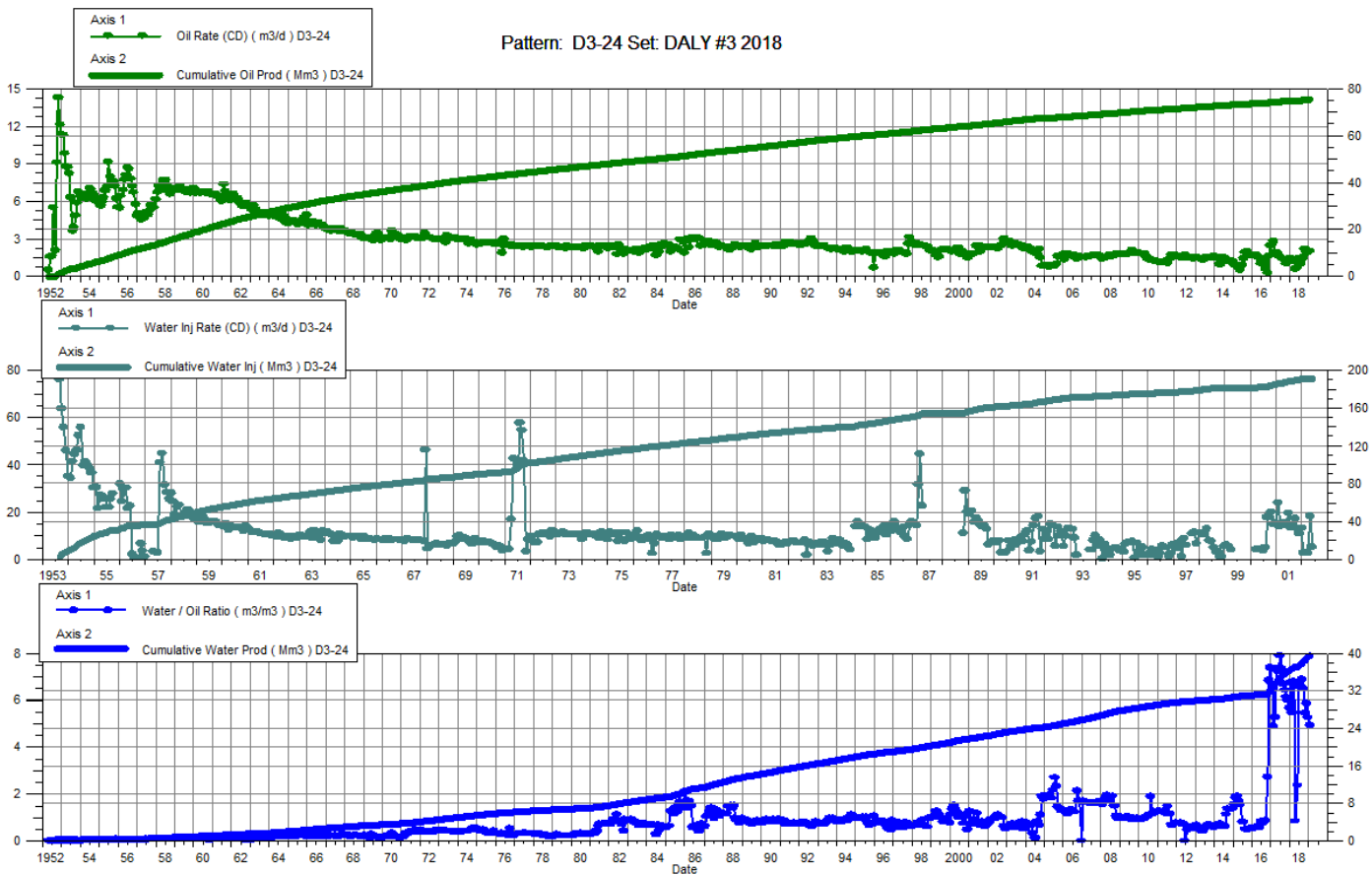
Date	Oil Rate (CD) m3/d	Cum Oil Prod Mm3	Water Rate (CD) m3/d	Cum Water Prod Mm3	Water Inj Rate (CD) m3/d	Cum Water Inj Mm3	Water Oil Ratio m3/m3	Voidage Replacement Ratio	Cum Voidage Replacemt Ratio	Water Inj Pressure kPa
1-31-2018	2.46	105.27	1.37	22.22		244.38	0.56		1.89	2,600.00
2-28-2018	7.04	105.47	11.06	22.53		244.38	1.57		1.88	2,600.00
3-31-2018	30.26	106.41	68.89	24.66		244.38	2.28		1.84	2,600.00
4-30-2018	35.02	107.46	66.95	26.67		244.38	1.91		1.79	2,600.00
5-31-2018	35.89	108.57	61.60	28.58		244.38	1.72		1.76	2,600.00
6-30-2018	39.33	109.75	54.67	30.22		244.38	1.39		1.72	866.67
7-31-2018	31.46	110.72	46.11	31.65		244.38	1.47		1.69	-
8-31-2018	37.42	111.88	49.10	33.17		244.38	1.31		1.66	-
9-30-2018	24.91	112.63	19.66	33.76		244.38	0.79		1.65	-
10-31-2018	25.42	113.42	20.54	34.40		244.38	0.81		1.63	-
11-30-2018	26.70	114.22	22.40	35.07		244.38	0.84		1.61	-
12-31-2018	28.23	115.10	24.19	35.82		244.38	0.86		1.60	-



Daly Unit No. 3

Pattern P-24 - 00/14-01-010-28W1/00

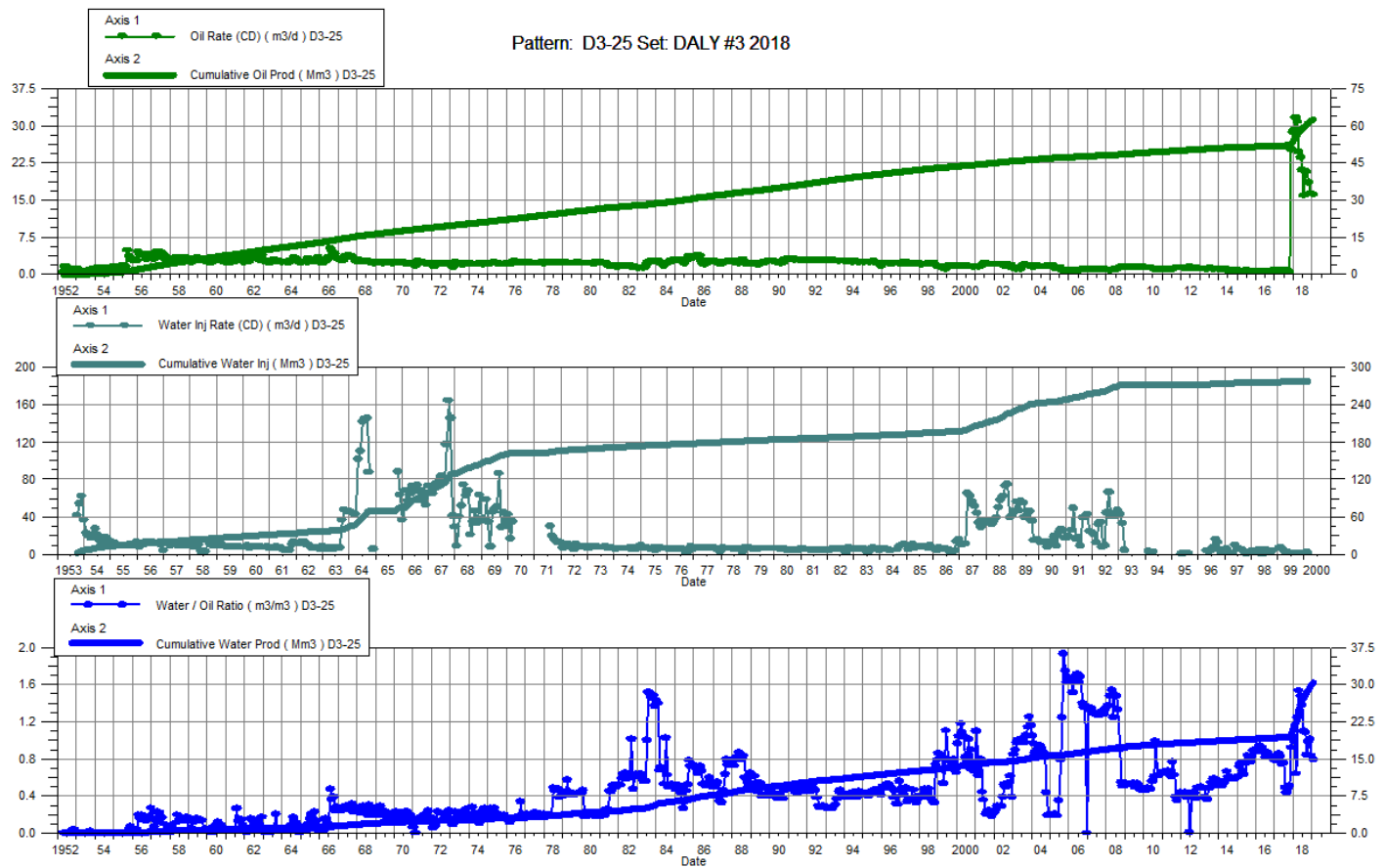
Date	Oil Rate (CD) m3/d	Cum Oil Prod Mm3	Water Rate (CD) m3/d	Cum Water Prod Mm3	Water Inj Rate (CD) m3/d	Cum Water Inj Mm3	Water Oil Ratio m3/m3	Voidage Replacement Ratio	Cum Voidage Replacemt Ratio	Water Inj Pressure kPa
1-31-2018	1.44	74.98	9.71	36.45		192.02	6.73		1.70	-
2-28-2018	1.21	75.01	6.62	36.64		192.02	5.46		1.70	-
3-31-2018	1.43	75.06	9.69	36.94		192.02	6.77		1.69	-
4-30-2018	0.63	75.07	0.53	36.96		192.02	0.85		1.69	-
5-31-2018	0.76	75.10	1.77	37.01		192.02	2.35		1.69	-
6-30-2018	1.45	75.14	9.49	37.30		192.02	6.56		1.69	-
7-31-2018	1.00	75.17	6.60	37.50		192.02	6.58		1.68	-
8-31-2018	1.41	75.22	9.72	37.80		192.02	6.87		1.68	-
9-30-2018	1.54	75.26	9.98	38.10		192.02	6.48		1.67	115
10-31-2018	2.17	75.33	11.82	38.47		192.02	5.44		1.67	343
11-30-2018	1.91	75.39	11.16	38.80		192.02	5.85		1.66	276
12-31-2018	1.96	75.45	10.27	39.12		192.02	5.25		1.66	276



Daly Unit No. 3

Pattern P-25 - 00/16-01-010-28W1/00

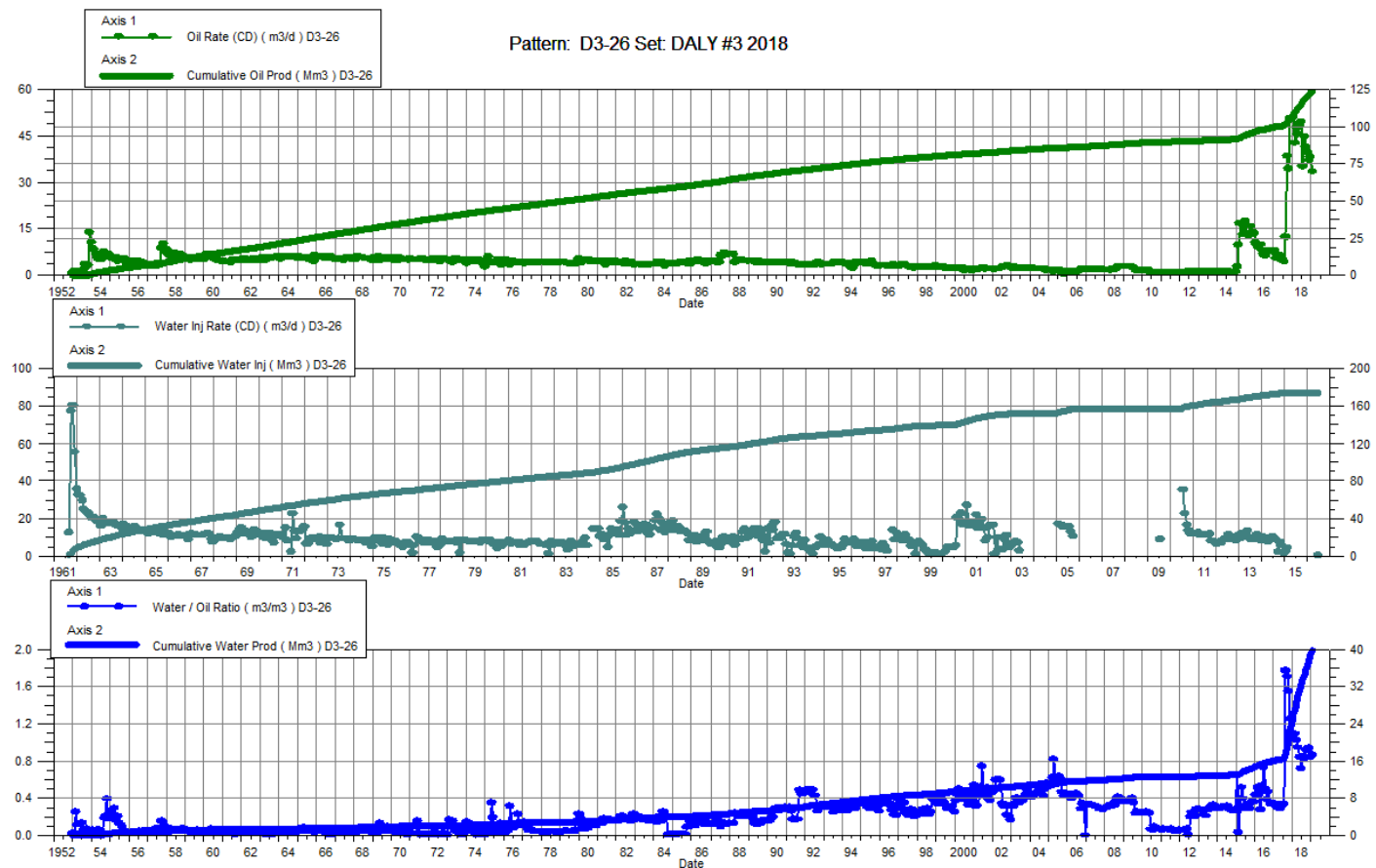
Date	Oil Rate (CD) m3/d	Cum Oil Prod Mm3	Water Rate (CD) m3/d	Cum Water Prod Mm3	Water Inj Rate (CD) m3/d	Cum Water Inj Mm3	Water Oil Ratio m3/m3	Voidage Replacement Ratio	Cum Voidage Replacemt Ratio	Water Inj Pressure kPa
1-31-2018	29.08	54.81	28.46	21.81		277.99	0.98		3.58	3,000.00
2-28-2018	31.56	55.69	20.12	22.38		277.99	0.64		3.51	3,000.00
3-31-2018	30.80	56.65	38.33	23.57		277.99	1.24		3.42	3,000.00
4-30-2018	24.71	57.39	37.77	24.70		277.99	1.53		3.34	3,000.00
5-31-2018	23.61	58.12	34.71	25.78		277.99	1.47		3.27	3,000.00
6-30-2018	21.11	58.75	28.93	26.64		277.99	1.37		3.21	3,000.00
7-31-2018	15.94	59.25	17.44	27.18		277.99	1.09		3.17	3,000.00
8-31-2018	20.85	59.90	22.53	27.88		277.99	1.08		3.13	3,000.00
9-30-2018	20.70	60.52	17.38	28.40		277.99	0.84		3.09	1,099.30
10-31-2018	18.57	61.09	18.19	28.97		277.99	0.98		3.05	133.45
11-30-2018	16.39	61.58	16.61	29.47		277.99	1.01		3.01	-
12-31-2018	16.33	62.09	13.57	29.89		277.99	0.83		2.98	-



Daly Unit No. 3

Pattern P-26 - 00/12-01-010-28W1/00

Date	Oil Rate (CD) m3/d	Cum Oil Prod Mm3	Water Rate (CD) m3/d	Cum Water Prod Mm3	Water Inj Rate (CD) m3/d	Cum Water Inj Mm3	Water Oil Ratio m3/m3	Voidage Replacement Ratio	Cum Voidage Replacemt Ratio	Water Inj Pressure kPa
1-31-2018	50.95	108.19	53.86	25.90		174.42	1.06		1.28	--
2-28-2018	42.75	109.39	46.56	27.20		174.42	1.09		1.26	--
3-31-2018	47.73	110.87	48.77	28.71		174.42	1.02		1.23	--
4-30-2018	45.43	112.23	42.86	30.00		174.42	0.94		1.21	--
5-31-2018	48.50	113.74	40.65	31.26		174.42	0.84		1.19	--
6-30-2018	49.55	115.22	35.43	32.32		174.42	0.71		1.17	--
7-31-2018	35.10	116.31	29.40	33.23		174.42	0.84		1.15	--
8-31-2018	44.70	117.70	37.12	34.38		174.42	0.83		1.13	--
9-30-2018	41.34	118.94	38.03	35.53		174.42	0.92		1.11	--
10-31-2018	39.57	120.16	36.13	36.65		174.42	0.91		1.10	--
11-30-2018	37.19	121.28	34.91	37.69		174.42	0.94		1.08	--
12-31-2018	38.19	122.46	32.15	38.69		174.42	0.84		1.07	--



Daly Unit No. 3

Pattern P-27 - 00/10-01-010-28W1/00

Date	Oil Rate (CD) m3/d	Cum Oil Prod Mm3	Water Rate (CD) m3/d	Cum Water Prod Mm3	Water Inj Rate (CD) m3/d	Cum Water Inj Mm3	Water Oil Ratio m3/m3	Voidage Replacement Ratio	Cum Voidage Replacemt Ratio	Water Inj Pressure kPa
1-31-2018	2.49	29.46	1.45	8.19		70.71	0.58		1.85	-
2-28-2018	2.25	29.52	0.98	8.22		70.71	0.44		1.85	-
3-31-2018	2.77	29.61	1.14	8.26		70.71	0.41		1.84	-
4-30-2018	2.92	29.70	1.14	8.29		70.71	0.39		1.83	-
5-31-2018	2.87	29.79	1.12	8.33		70.71	0.39		1.83	-
6-30-2018	2.56	29.86	1.13	8.36		70.71	0.44		1.82	-
7-31-2018	1.88	29.92	0.90	8.39		70.71	0.48		1.82	-
8-31-2018	2.46	30.00	1.18	8.42		70.71	0.48		1.81	-
9-30-2018	2.34	30.07	1.14	8.46		70.71	0.49		1.81	165
10-31-2018	2.05	30.13	0.95	8.49		70.71	0.46		1.80	552
11-30-2018	1.99	30.19	0.94	8.52		70.71	0.47		1.80	552
12-31-2018	2.04	30.25	0.87	8.54		70.71	0.42		1.80	636

