

Daly Unit #3
2019 Annual EOR Report

Executive Summary

In 2019, oil production in Daly Unit #3 was 238.9 m³/d (1,503 bbl/d) totaling 87.1 e³m³ (548.3 mbbbl). Annual production increased by 13.7% from 2018 to 2019 using the average production for the year. Comparing December 2018 to December 2019 the production increased by 16.8%. This increase in production is entirely through the drilling horizontal multistage fractured wells within the unit. By the end of 2019 cumulative oil production from the Daly Unit #3 was 2,408 e³m³ (15.1 mmbbl).

In December 2019 there were 64 producing oil wells (including crossover wells with the bottom hole location in Daly #3), and only one water injection well was active in the unit.

Discussion

By 1957 the bulk of the development drilling was complete and since then little development occurred prior to Corex operatorship. Water injection began 2 years after the initial production and provided pressure support immediately. Peak production occurred in 1955 at 213 m³/d (1,340 bbl/d). In 1984 more producing wells began to be converted to injection wells. As a result of increased water injection, production went from ~75 m³/d in 1984 to ~95 m³/d in 1992. This is a very poor increase in production with secondary recovery, the waterflood response was muted compared to all the other units and did not appear to be very successful.

Prior to Corex operatorship horizontal wells were previously drilled within the unit. In 1996 two wells were drilled and in 1997 three wells were drilled. These unstimulated horizontal wells produce at modest rates, but have high oil cut and added valuable incremental recoverable reserves to the unit. The low decline production profile of these wells contrasts significantly to horizontal wells produced under primary recovery indicating effective pressure maintenance. Their impact is shown below at a cumulative oil recovery of 1,700 e³m³ (10.7 MMbbl). In 2014, three horizontals in the Middle Daly and a vertical Crinoidal well were drilled in the unit. In 2015, an additional two Middle Daly wells were drilled as well as a Crinoid vertical well. In 2016, two re-entry legs were drilled off of an existing Daly horizontal well. In 2017, six Daly horizontals, one Crinoidal, and one Crinoidal re-entry were drilled within the unit. In 2018, 17 wells were drilled within the unit. In 2019, eight wells were drilled within the unit. The wells, especially the horizontals, were successful and greatly improved unit production.

The significant operations in 2019 are as follows:

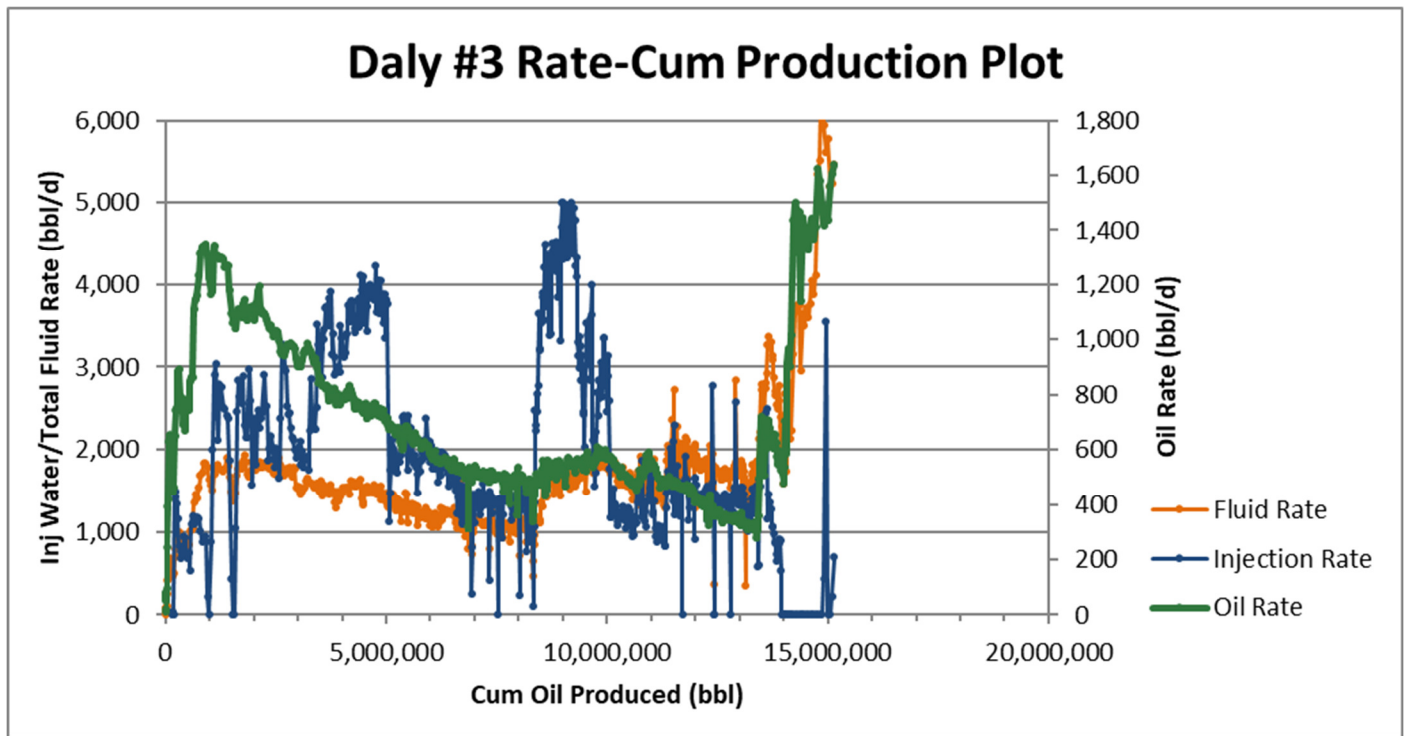
- January 2019, drilled the 103/10-12-010-28W1/00 horizontal well in the Daly.
- January 2019, drilled the 104/10-12-010-28W1/00 horizontal well in the Daly.
- February 2019, drilled the 103/15-12-010-28W1/00 horizontal well in the Daly.
- February 2019, drilled the 104/15-12-010-28W1/00 horizontal well in the Daly.
- February 2019, convert the 103/10-01-010-28W1/00 horizontal well to injection.
- March 2019, abandon the 100/16-01-010-28W1/00 vertical well.
- August 2019, drilled the 103/13-12-010-28W1/00 horizontal well in the Daly.
- August 2019, drilled the 102/13-12-010-28W1/00 horizontal well in the Daly.
- August 2019, drilled the 104/05-11-010-28W1/00 horizontal well in the Daly.
- August 2019, drilled the 103/05-11-010-28W1/00 horizontal well in the Daly.

- October 2019, recomplete the 102/05-02-010-28W1/00 vertical well in the Daly.
- October 2019, recomplete the 102/12-11-010-28W1/00 vertical well in the Daly.
- October 2019, acidize the 103/15-01-010-28W1/00 disposal well.
- December 2019, deepen the 100/11-11-010-28W1/00 vertical injection well.

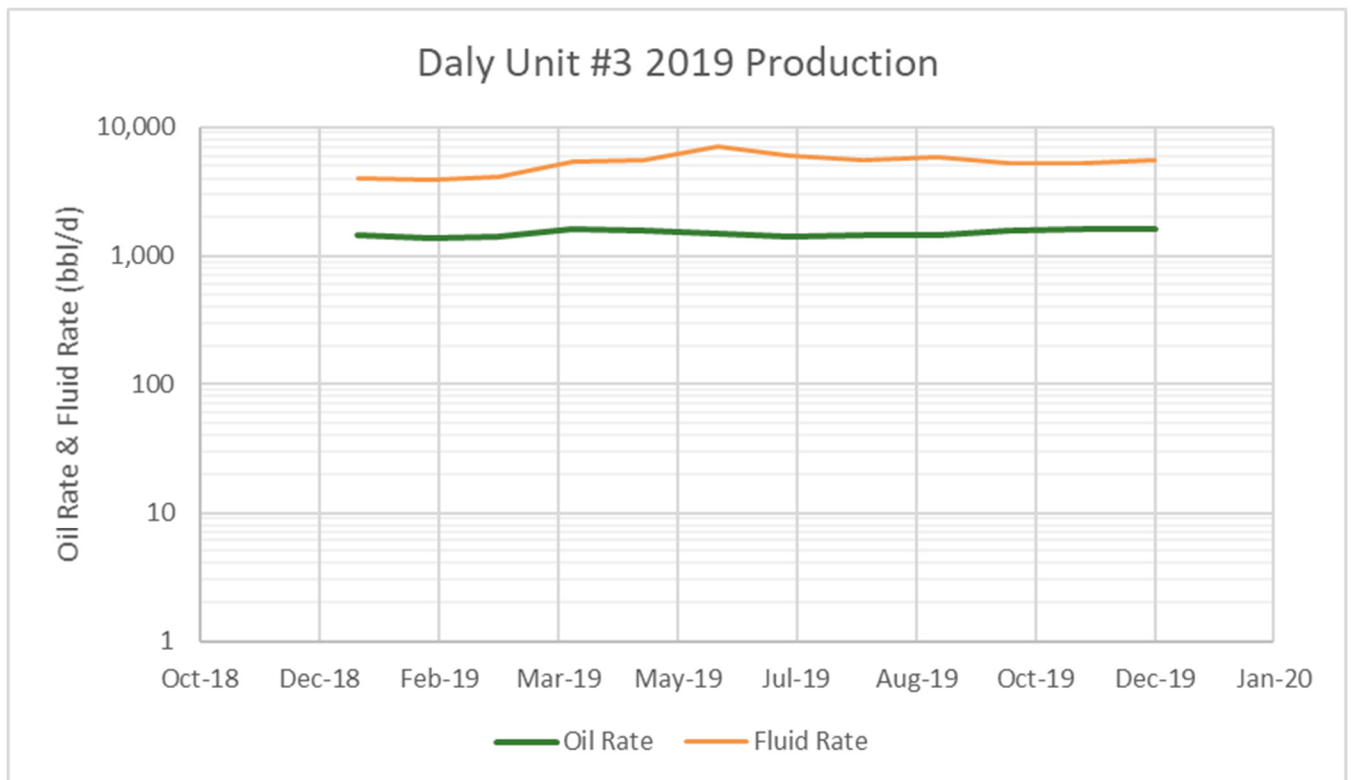
Historically, the waterflood has not been particularly effective, as the high oil cuts throughout the unit can attest. The water may have provided pressure support, but it appears as if there was very little effective sweep in the reservoir and water, in general, has not broken through. This is apportioned to out of zone injection. With the currently high oil cuts it is easier to drill in the unit, but effective secondary recovery will need to be implemented. Furthermore, Chevron while drilling lost a well when they encountered 15 MPa in the Amaranth formation, clearly due to out of zone injection. In some of the wells the casing did not reach past the Amaranth and so injection water was placed in the zone and pressured it up. Therefore, Corex implements extra precautions when drilling in the unit, ensuring the safe drilling of wells. The unit has plenty of potential and improving the waterflood would be beneficial; however, the old verticals should not be considered for injection conversion. The unit is currently set up fully with 5-spot patterns. Currently, only one horizontal well is injecting at 111 m³/d (700 bbl/d) There was no water injection whatsoever in 2019 and the producing WOR decreased to 1.7 m³/m³. The injected water is now filtered and treated.

Detailed production, injection, voidage tables and plots for the total unit and each injection pattern are at the end of this report.

Daly #3 – Rate vs Cum Oil Production



Daly #3 – Rate vs Time



2019 Reservoir Pressure Surveys

Unit	UWI	License	Test Type	Date of Pressure	Duration of SI (days)	Datum BHP (kPaa)
Daly #3	100/10-01-010-28W1/00	169	FL Shot	2019-12-19	140	5,589
Daly #3	100/11-01-010-28W1/00	1801	FL Shot	2019-12-19	1008	1,600
Daly #3	102/05-02-010-28W1/00	10137	BH BU	2019-10-18	0	2,822
Daly #3	100/11-11-010-28W1/00	876	Pump & BH BU	2019-11-29	76	2,863
Daly #3	102/12-11-010-28W1/00	10174	BH BU	2019-10-21	0	2,628
Daly #3	1A0/05-12-010-28W1/00	4289	FL Shot	2019-11-07	1206	6,956
Daly #3	1B0/05-12-010-28W1/00	4290	FL Shot	2019-11-07	966	5,101
Daly #3	100/06-12-010-28W1/00	263	FL Shot	2019-11-07	1162	6,582
Daly #3	100/10-12-010-28W1/00	167	FL Shot	2019-11-07	950	6,905
Daly #3	100/12-12-010-28W1/00	214	FL Shot	2019-11-07	950	6,854
Daly #3	100/13-12-010-28W1/00	815	BH BU	2019-03-11	176	3,899
Daly #3	100/14-12-010-28W1/00	482	FL Shot	2019-11-07	950	6,528
Daly #3	1B0/14-12-010-28W1/00	4294	FL Shot	2019-05-21	780	7,331
Daly #3	100/04-13-010-28W1/00	576	FL Shot	2019-11-07	936	5,127
Daly #3	100/07-13-010-28W1/00	706	FL Shot	2019-11-07	950	1,708
Daly #3	100/04-14-010-28W1/00	1189	FL Shot	2019-11-07	950	4,942

In 2019, sixteen pressures were recorded giving an average of ~4,900 kPa, consistent with the survey in 2018 taking the pressures on the wells with longer shut in times. Historically, we have seen that pressures on wells that have not been shut-in for a long duration are quite low. This indicates that the permeability of the formation is too low to build properly unless there is a significant shut-in duration. Therefore, the average pressure within the unit is likely closer to 4,500 kPa to 5,000 kPa. As all injection within the unit in the vertical wells has stopped there is concern that the overall pressure is significantly dropping. There are plans to begin converting some of the horizontal wells to injection, which will help to provide pressure support within the unit. The initial reservoir pressure is estimated at 6,585 kPaa and the bubble point pressure as 1,515 kPaa.

There are some wells in the unit with noticeably low pressures. Oddly, historical data shows many producers surrounded by injectors have had low pressures in the 1,000 kPa range, further indicating poor sweep efficiency and out of zone injection. This observation is supported by the data collected in 2015, where some very low pressures were seen in the producing wells. For a unit that has been under water flood for 58 years, clearly the water is not in zone to provide pressure support. The large periods where, historically, they over injected likely contributed to the out of zone injection.

Despite many producers near to injectors with low pressures there are also wells far away from injection that have been seen to have high pressures that cannot be easily rationalized. The huge range in pressures in wells close to injectors and producers with high oil cuts indicate that there is poor communication between many of the injectors and the producers and that the waterflood cannot be taken to be successful. Considering this, the unit has plenty of opportunity if a successful waterflood is implemented, as seen in the other units.

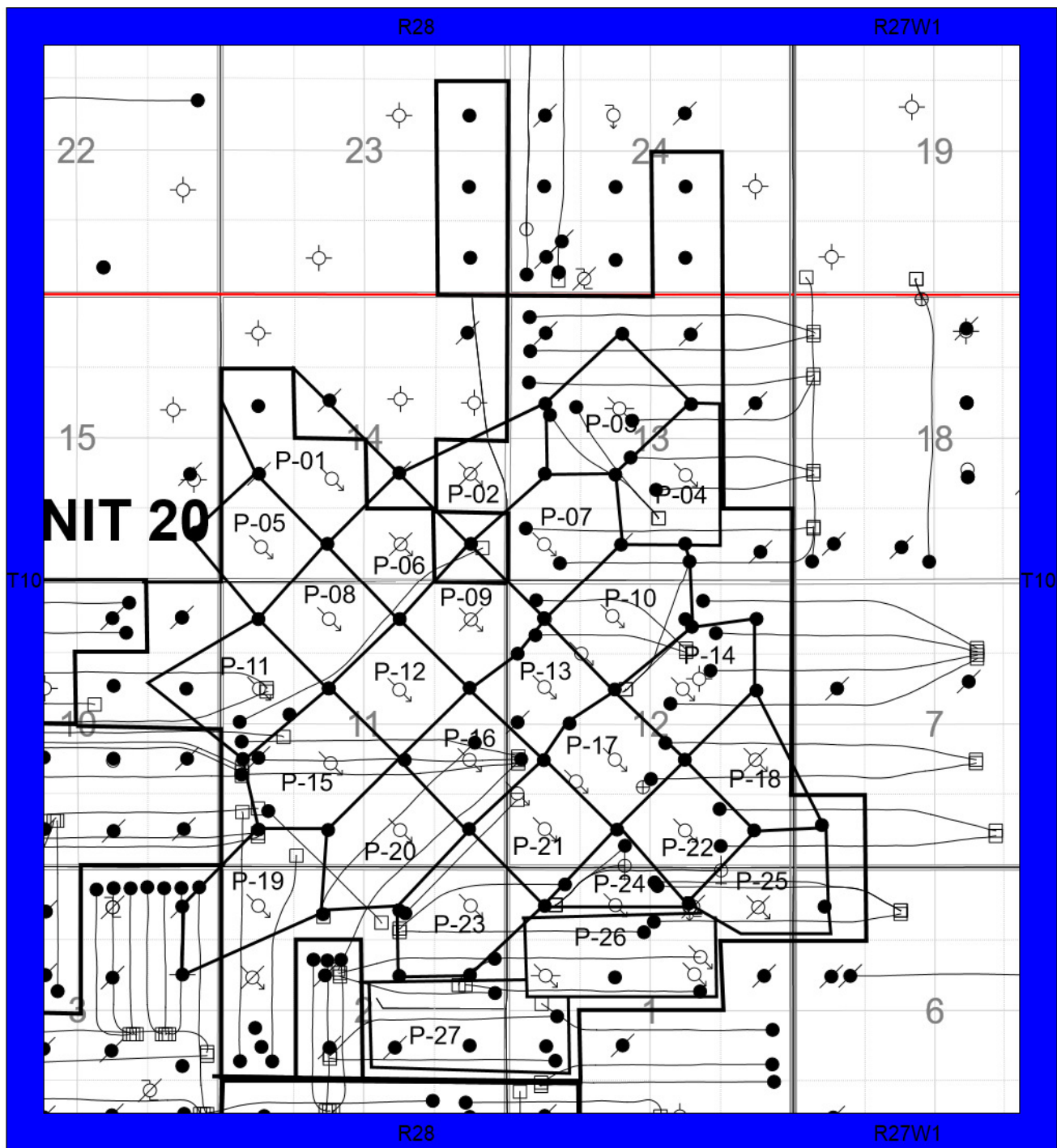
The Instantaneous Voidage Replacement Ratio (VRR) in 2019 was around 0.15. However, only one horizontal well was injecting, so characterizing this for the unit is a misrepresentation. The cumulative VRR at year end was 1.11, continuing to drop. It is encouraging that the over injection is being reduced. However, in the long-term, waterflood support will be needed to maintain the pressure. It is also important to note that any out of zone injection is not considered for these calculations. An oil formation volume factor of $1.06 \text{ rm}^3/\text{sm}^3$ and a water formation volume factor of $1.04 \text{ rm}^3/\text{sm}^3$ were used in the VRR calculations.

2019 Well Servicing

UWI	Unit	Licence	Start Date	Operation	Objective
INSTALL IJACK EGAS COMPRESSOR	DU3 / DNU	FF18DAL025	2019-04-05	Facilities	Install Compressor
102/05-02-010-28W1/00	DU#3	10137	2019-10-16	Completion/Workover	Recompletion
100/15-12-010-28W1/00	DU#3	000291	2019-02-08	Completion/Workover	Wellhead Repair
SUPPLEMENTAL PHASE 2 ENVIRONMENTAL SITE ASSESSMENT	DU#3	R19DAL003	2019-08-01	Facilities	Remediation
103/12-13-010-28W1/00	DU#3	11000	2019-05-14	Completion/Workover	Pump Repair
103/10-12-010-28W1/00	DU#3	11137	2019-01-17	Drilling	Drilling - original
103/10-12-010-28W1/00	DU#3	11137	2019-02-05	Completion/Workover	Initial Completion
103/07-12-010-28W1/00	DU#3	10951	2019-08-30	Facilities	Install Compressor
103/15-12-010-28W1/00	DU#3	11139	2019-01-31	Drilling	Drilling - original
103/15-12-010-28W1/00	DU#3	11139	2019-02-05	Completion/Workover	Initial Completion
REPAIR OIL TANK / REPLACE STACK / INSTALL ARRESTOR	DU#3	RM19DAL005	2019-06-25	Facilities	Major Surface R&M
INSTALL WATCHDOG	DU#3	FF19DAL008	2019-07-17	Facilities	Watchdog Install
104/05-11-010-28W1/00	DU3 / DNU	11261	2019-04-12	Construction	Construction
104/05-11-010-28W1/00	DU3 / DNU	11261	2019-05-23	Facilities	Equip & Tie-In
104/05-11-010-28W1/00	DU3 / DNU	11261	2019-08-16	Drilling	Drilling - original
104/05-11-010-28W1/00	DU3 / DNU	11261	2019-09-07	Completion/Workover	Initial Completion
104/05-11-010-28W1/00	DU3 / DNU	11261	2019-12-13	Facilities	Install Compressor
102/05-01-010-28W1/00	DU#3	10624	2019-01-07	Completion/Workover	Pump Repair
103/13-12-010-28W1/00	DU#3	11230	2019-03-22	Construction	Construction
103/13-12-010-28W1/00	DU#3	11230	2019-05-16	Facilities	Equip & Tie-In
103/13-12-010-28W1/00	DU#3	11230	2019-08-09	Drilling	Drilling - original
103/13-12-010-28W1/00	DU#3	11230	2019-08-20	Completion/Workover	Initial Completion
103/13-12-010-28W1/00	DU#3	11230	2019-12-13	Facilities	Install Compressor
104/15-12-010-28W1/00	DU#3	11140	2019-01-23	Drilling	Drilling - original
104/15-12-010-28W1/00	DU#3	11140	2019-02-05	Completion/Workover	Initial Completion
104/15-12-010-28W1/00	DU#3	11140	2019-08-30	Facilities	Install Compressor
102/15-12-010-28W1/00	DU#3	4735	2019-09-17	Completion/Workover	Wellhead Repair
102/12-11-010-28W1/00	DU#3	10174	2019-10-19	Completion/Workover	Recompletion
100/02-13-010-28W1/00	DU#3	000462	2019-05-13	Completion/Workover	Pump Repair
100/02-24-010-28W1/00	DU#3	000847	2019-01-21	Completion/Workover	Pump Repair

UWI	Unit	Licence	Start Date	Operation	Objective
103/05-11-010-28W1/00	DU3 / DNU	11260	2019-04-12	Construction	Construction
103/05-11-010-28W1/00	DU3 / DNU	11260	2019-05-23	Facilities	Equip & Tie-In
103/05-11-010-28W1/00	DU3 / DNU	11260	2019-08-21	Drilling	Drilling - original
103/05-11-010-28W1/00	DU3 / DNU	11260	2019-09-07	Completion/Workover	Initial Completion
103/15-01-010-28W1/00	DU#3	9842	2019-01-18	Completion/Workover	Acid Treatment
103/15-01-010-28W1/00	DU#3	9842	2019-10-26	Completion/Workover	Acid Treatment
102/13-12-010-28W1/00	DU#3	11229	2019-03-18	Completion/Workover	Initial Completion
102/13-12-010-28W1/00	DU#3	11229	2019-03-22	Construction	Construction
102/13-12-010-28W1/00	DU#3	11229	2019-06-03	Facilities	Equip & Tie-In
102/13-12-010-28W1/00	DU#3	11229	2019-08-12	Drilling	Drilling - original
TURNAROUND	DU#3	T18DAL006	2019-07-23	Facilities	Turnaround
100/16-01-010-28W1/00	DU#3	000279	2019-03-07	Abandon	Abandon Well
100/16-01-010-28W1/00	DU#3	000279	2019-10-01	Facilities	Reclamation
102/05-12-010-28W1/00	DU#3	10989	2019-08-30	Facilities	Install Compressor
102/05-12-010-28W1/00	DU#3	10989	2019-09-13	Facilities	Install Methanol Injection
CATHODIC	DU#3	RM18DAL007	2019-04-30	Facilities	Cathodic
104/10-12-010-28W1/00	DU#3	11138	2019-01-09	Drilling	Drilling - original
104/10-12-010-28W1/00	DU#3	11138	2019-02-05	Completion/Workover	Initial Completion
103/05-02-010-28W1/00	DU#3	10196	2019-04-08	Facilities	Cathodic
102/01-12-010-28W1/00	DU#3	10866	2019-05-28	Facilities	Install Compressor
TEST SEPARATOR / HEADER INSTALL	DU#3	P19DAL001	2019-01-31	Facilities	Header / Separator Install
IN LINE INSPECTION	DU#3	RM19DAL007	2019-07-31	Facilities	In Line Inspection
102/15-02-010-28W1/00	DU#3	004613	2019-09-17	Completion/Workover	Wellhead Repair
102/15-02-010-28W1/00	DU#3	004613	2019-12-13	Completion/Workover	Clean-out
100/10-13-010-28W1/00	DU#3	000727	2019-01-09	Completion/Workover	Pump Repair
100/10-13-010-28W1/00	DU#3	000727	2019-03-17	Completion/Workover	Pump Repair
CATHODIC	DU#3	RM19DAL008	2019-10-01	Facilities	Cathodic
TURNAROUND	DU#3	T19DAL006	2019-08-12	Facilities	Turnaround

Waterflood Pattern Map

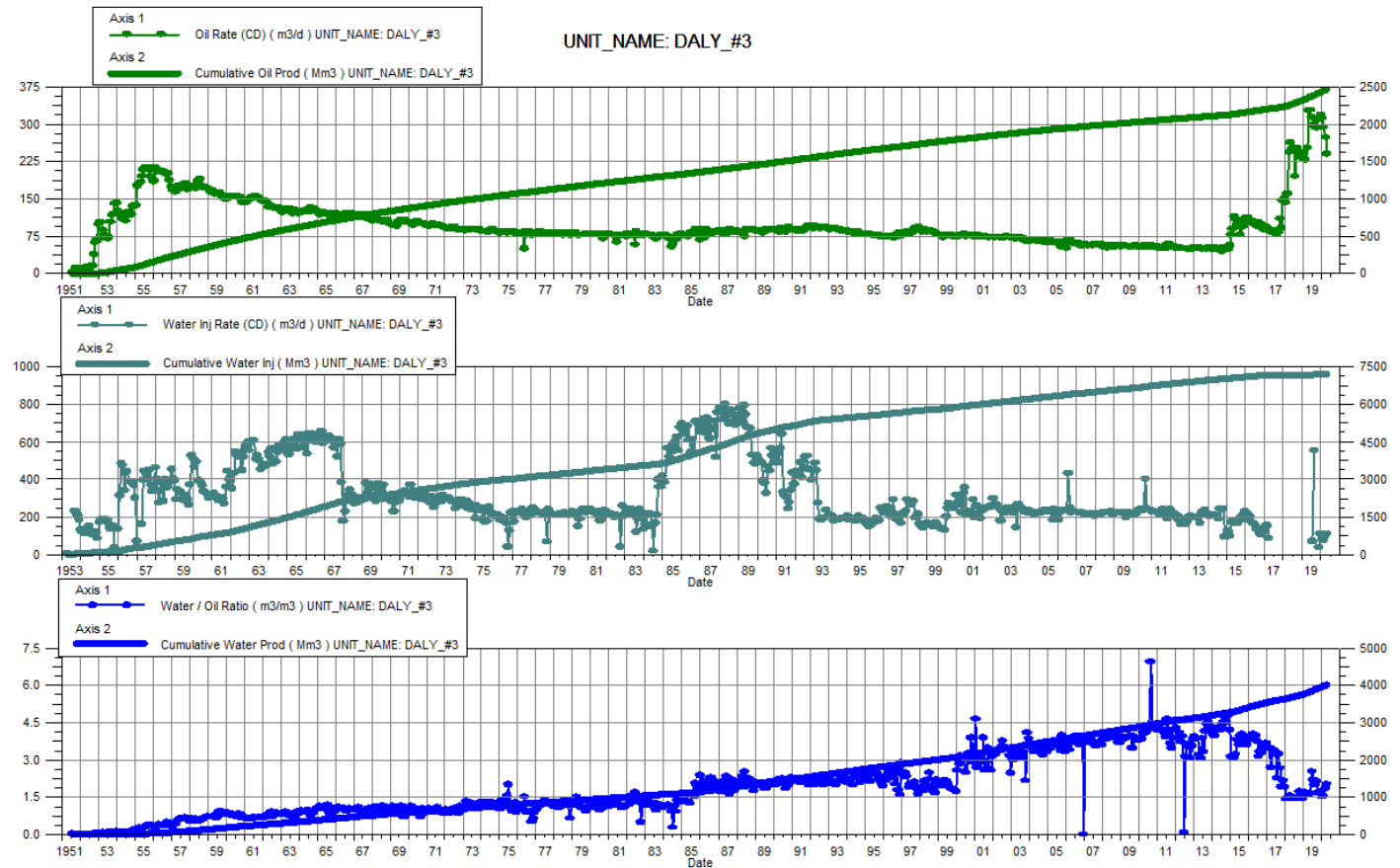


Waterflood Pattern Table

Pattern	Injection Well
P-01	100/06-14-010-28W1/00
P-02	100/08-14-010-28W1/00
P-03	100/11-13-010-28W1/00
P-04	100/07-13-010-28W1/00
P-05	100/04-14-010-28W1/00
P-06	100/02-14-010-28W1/00
P-07	100/04-13-010-28W1/00
P-08	100/14-11-010-28W1/00
P-09	100/16-11-010-28W1/00
P-10	100/14-12-010-28W1/00, 1B0/14-12-010-28W1/00
P-11	100/12-11-010-28W1/00
P-12	100/10-11-010-28W1/00
P-13	100/12-12-010-28W1/00
P-14	100/10-12-010-28W1/00
P-15	100/06-11-010-28W1/00
P-16	100/08-11-010-28W1/00
P-17	100/06-12-010-28W1/00, 1A0/05-12-010-28W1/00
P-18	100/08-12-010-28W1/00
P-19	100/13-02-010-28W1/00
P-20	100/02-11-010-28W1/00
P-21	100/04-12-010-28W1/00, 1B0/05-12-010-28W1/00
P-22	100/02-12-010-28W1/00
P-23	100/16-02-010-28W1/00
P-24	100/14-01-010-28W1/00
P-25	100/16-01-010-28W1/00
P-26	103/10-01-010-28W1/00, 100/10-01-010-28W1/00, 100/12-01-010-28W1/00
P-27	N/A

Total for Daly Unit #3

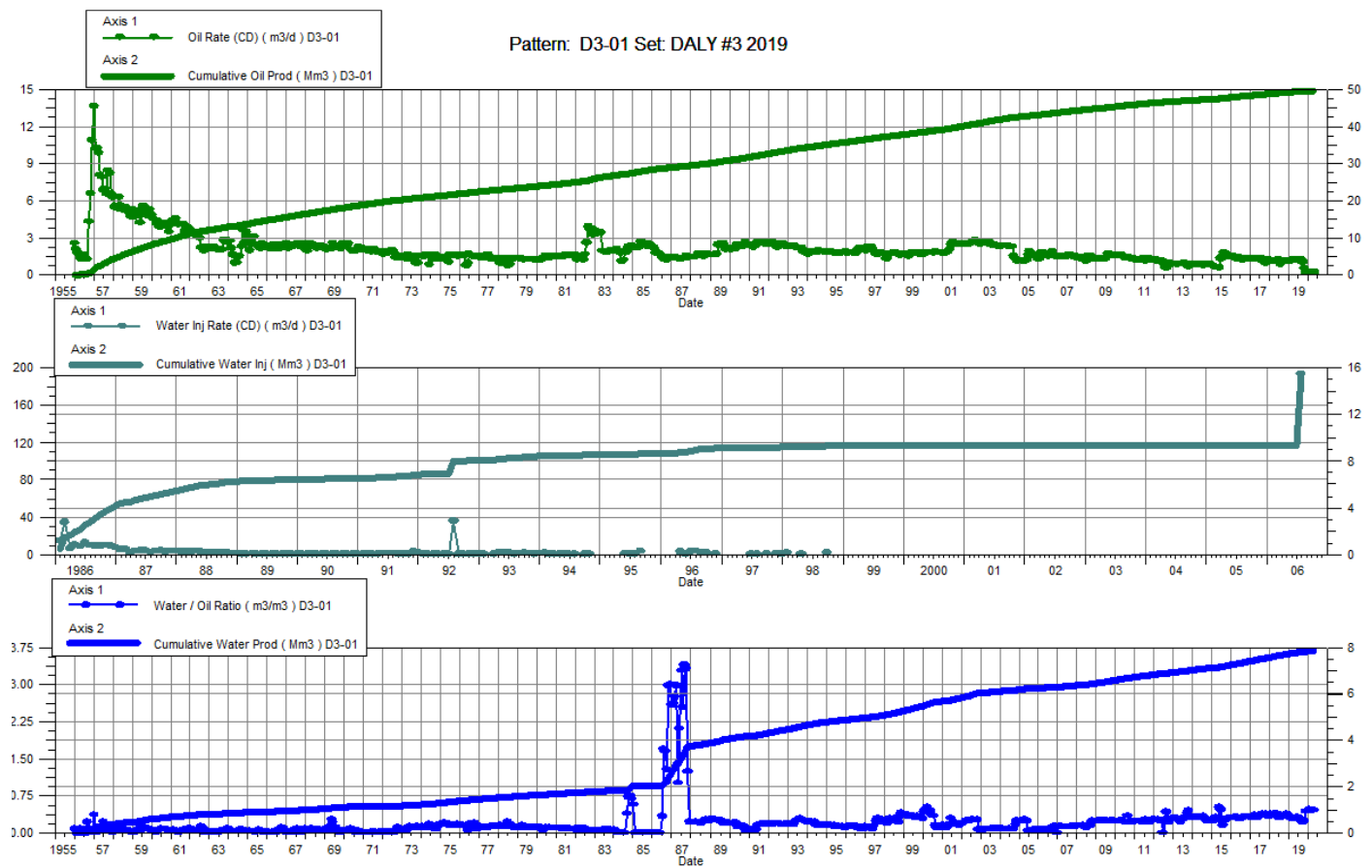
Date	Oil Rate (CD) m3/d	Cum Oil Prod Mm3	Water Rate (CD) m3/d	Cum Water Prod Mm3	Water Inj Rate (CD) m3/d	Cum Water Inj Mm3	Water Oil Ratio m3/m3	Voidage Replacement Ratio	Cum Voidage Replacement Ratio	Water Inj Pressure kPa
1-31-2019	242.44	2333.46	401.17	3760.79		7192.35	1.65		1.17	1,731.24
2-28-2019	228.81	2339.87	388.41	3771.67		7192.35	1.70		1.17	1,720.27
3-31-2019	253.54	2347.73	401.06	3784.10		7192.35	1.58		1.16	1,696.09
4-30-2019	327.29	2357.55	521.88	3799.76		7192.35	1.59		1.16	1,627.89
5-31-2019	329.19	2367.75	548.42	3816.76		7192.35	1.67		1.15	1,600.77
6-30-2019	313.68	2377.16	794.63	3840.59		7192.35	2.53		1.15	1,623.43
7-31-2019	297.38	2386.38	648.32	3860.69	68.39	7194.47	2.18	0.07	1.14	1,750.69
8-31-2019	295.89	2395.55	595.39	3879.15	554.27	7211.65	2.01	0.62	1.14	1,775.81
9-30-2019	292.07	2404.31	625.82	3897.92		7211.65	2.14		1.14	1,789.26
10-31-2019	308.14	2413.87	519.46	3914.03		7211.65	1.69		1.13	1,801.38
11-30-2019	312.29	2423.24	520.51	3929.64	36.45	7212.74	1.67	0.04	1.13	1,800.75
12-31-2019	319.62	2433.14	549.51	3946.68	108.47	7216.11	1.72	0.12	1.12	1,800.74



Daly Unit No. 3

Pattern P-01 - 00/06-14-010-28W1/00

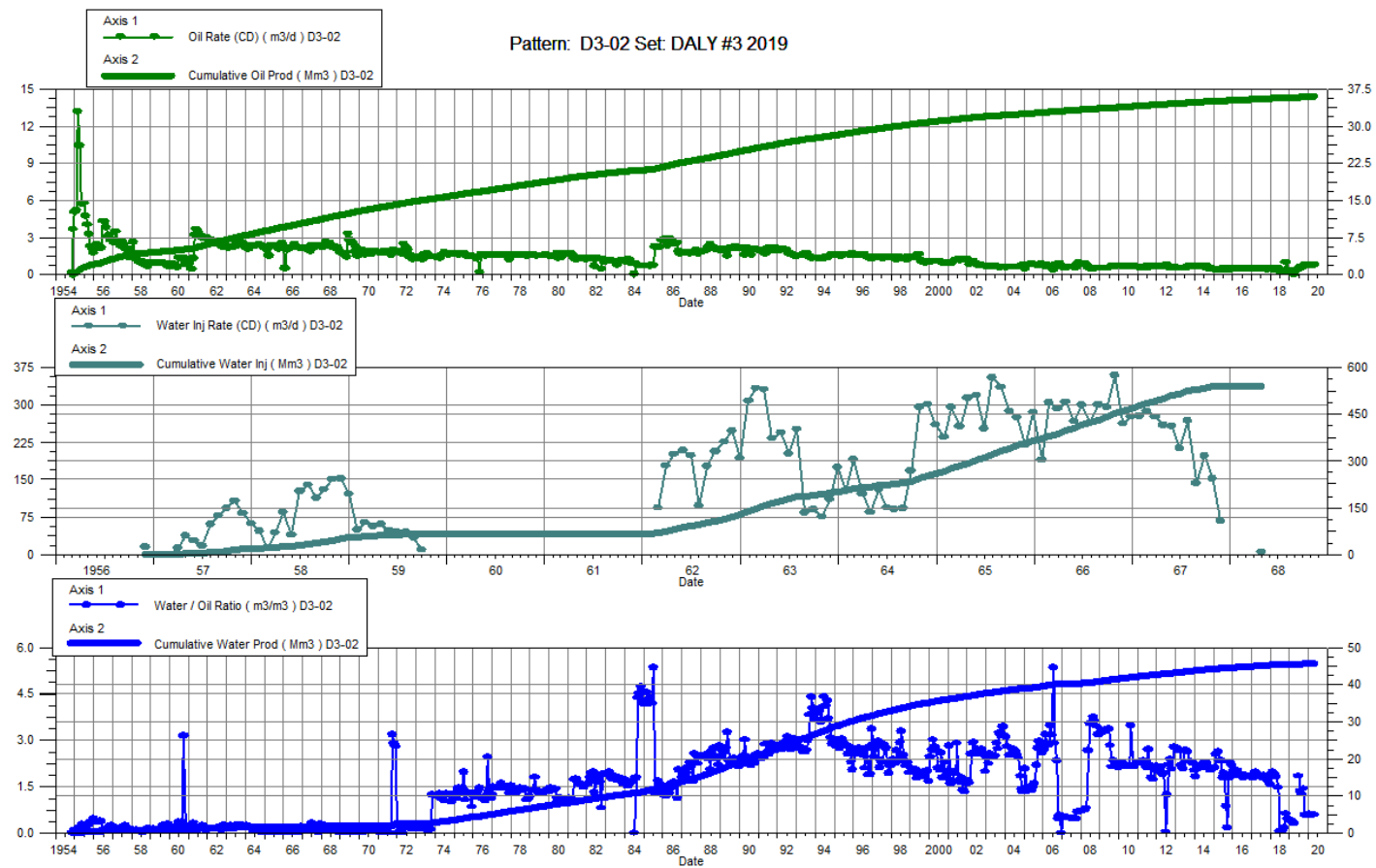
Date	Oil Rate (CD) m3/d	Cum Oil Prod Mm3	Water Rate (CD) m3/d	Cum Water Prod Mm3	Water Inj Rate (CD) m3/d	Cum Water Inj Mm3	Water Oil Ratio m3/m3	Voidage Replacement Ratio	Cum Voidage Replacement Ratio	Water Inj Pressure kPa
1-31-2019	1.16	49.40	0.37	7.71		15.37	0.32		0.27	--
2-28-2019	1.21	49.44	0.39	7.72		15.37	0.33		0.26	--
3-31-2019	1.28	49.48	0.36	7.74		15.37	0.28		0.26	--
4-30-2019	1.29	49.52	0.36	7.75		15.37	0.28		0.26	--
5-31-2019	1.24	49.55	0.38	7.76		15.37	0.31		0.26	--
6-30-2019	1.29	49.59	0.42	7.77		15.37	0.32		0.26	--
7-31-2019	1.31	49.63	0.37	7.78		15.37	0.29		0.26	--
8-31-2019	1.26	49.67	0.35	7.79		15.37	0.27		0.26	--
9-30-2019	1.07	49.70	0.24	7.80		15.37	0.23		0.26	--
10-31-2019	0.60	49.72	0.15	7.80		15.37	0.24		0.26	--
11-30-2019	0.26	49.73	0.11	7.81		15.37	0.44		0.26	--
12-31-2019	0.27	49.74	0.12	7.81		15.37	0.45		0.26	--



Daly Unit No. 3

Pattern P-02 - 00/08-14-010-28W1/00

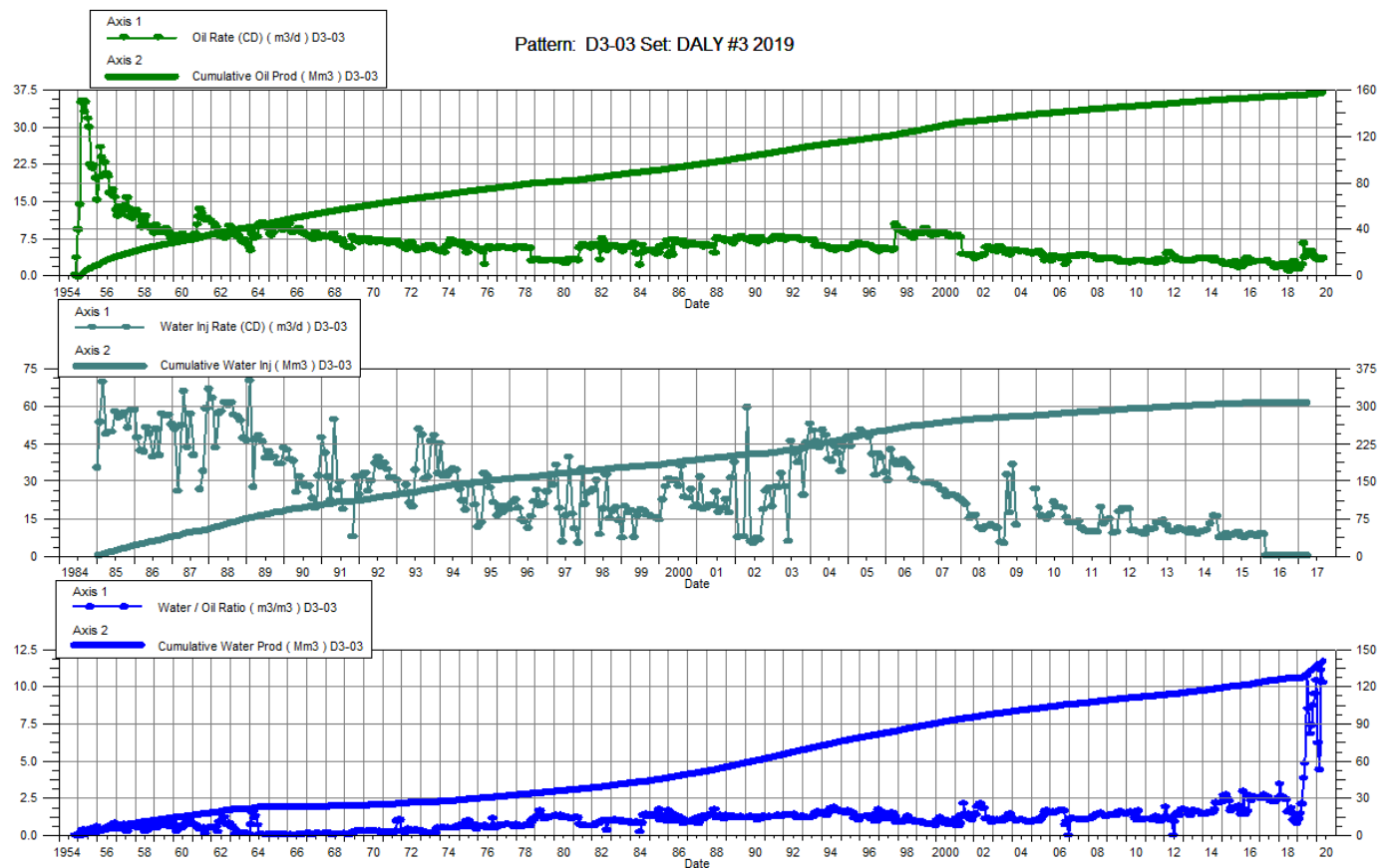
Date	Oil Rate (CD) m3/d	Cum Oil Prod Mm3	Water Rate (CD) m3/d	Cum Water Prod Mm3	Water Inj Rate (CD) m3/d	Cum Water Inj Mm3	Water Oil Ratio m3/m3	Voidage Replacement Ratio	Cum Voidage Replacement Ratio	Water Inj Pressure kPa
1-31-2019	0.39	35.90	0.15	45.34		542.96	0.38		6.63	--
2-28-2019	0.39	35.91	0.15	45.35		542.96	0.39		6.63	--
3-31-2019	0.07	35.92	0.02	45.35		542.96	0.32		6.63	--
4-30-2019		35.92		45.35		542.96			6.63	--
5-31-2019		35.92		45.35		542.96			6.63	--
6-30-2019	0.46	35.93	0.85	45.37		542.96	1.84		6.62	--
7-31-2019	0.62	35.95	0.85	45.40		542.96	1.36		6.62	--
8-31-2019	0.60	35.97	0.75	45.42		542.96	1.25		6.62	--
9-30-2019	0.68	35.99	0.98	45.45		542.96	1.44		6.61	--
10-31-2019	0.80	36.01	0.48	45.47		542.96	0.60		6.61	--
11-30-2019	0.82	36.04	0.47	45.48		542.96	0.57		6.60	--
12-31-2019	0.86	36.06	0.50	45.50		542.96	0.58		6.60	--



Daly Unit No. 3

Pattern P-03 - 00/11-13-010-28W1/00

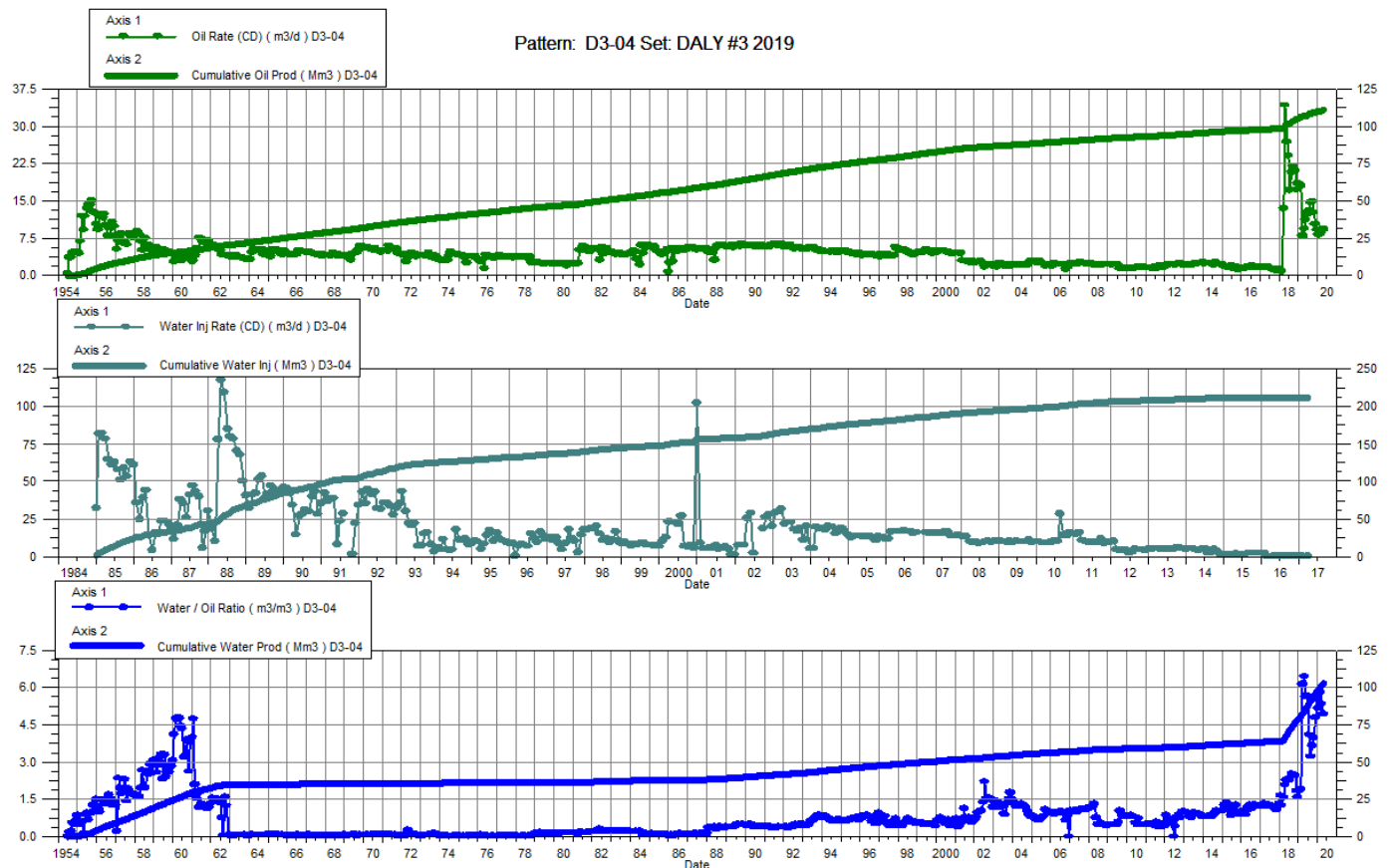
Date	Oil Rate (CD) m3/d	Cum Oil Prod Mm3	Water Rate (CD) m3/d	Cum Water Prod Mm3	Water Inj Rate (CD) m3/d	Cum Water Inj Mm3	Water Oil Ratio m3/m3	Voidage Replacement Ratio	Cum Voidage Replacement Ratio	Water Inj Pressure kPa
1-31-2019	1.50	155.80	1.68	126.91		309.69	1.12		1.08	1,700.00
2-28-2019	1.88	155.85	2.76	126.99		309.69	1.47		1.08	1,700.00
3-31-2019	2.41	155.93	5.05	127.14		309.69	2.10		1.08	1,700.00
4-30-2019	6.58	156.12	25.21	127.90		309.69	3.83		1.08	1,700.00
5-31-2019	3.73	156.24	18.00	128.46		309.69	4.82		1.08	1,700.00
6-30-2019	4.21	156.37	45.19	129.81		309.69	10.74		1.07	1,700.00
7-31-2019	4.77	156.51	40.64	131.07		309.69	8.51		1.07	1,700.00
8-31-2019	5.07	156.67	34.55	132.14		309.69	6.82		1.06	1,700.00
9-30-2019	5.17	156.83	38.24	133.29		309.69	7.40		1.06	1,700.00
10-31-2019	4.48	156.96	39.07	134.50		309.69	8.73		1.05	1,700.00
11-30-2019	3.93	157.08	37.24	135.62		309.69	9.47		1.05	1,700.00
12-31-2019	3.76	157.20	39.24	136.84		309.69	10.42		1.04	1,700.00



Daly Unit No. 3

Pattern P-04 - 00/07-13-010-28W1/00

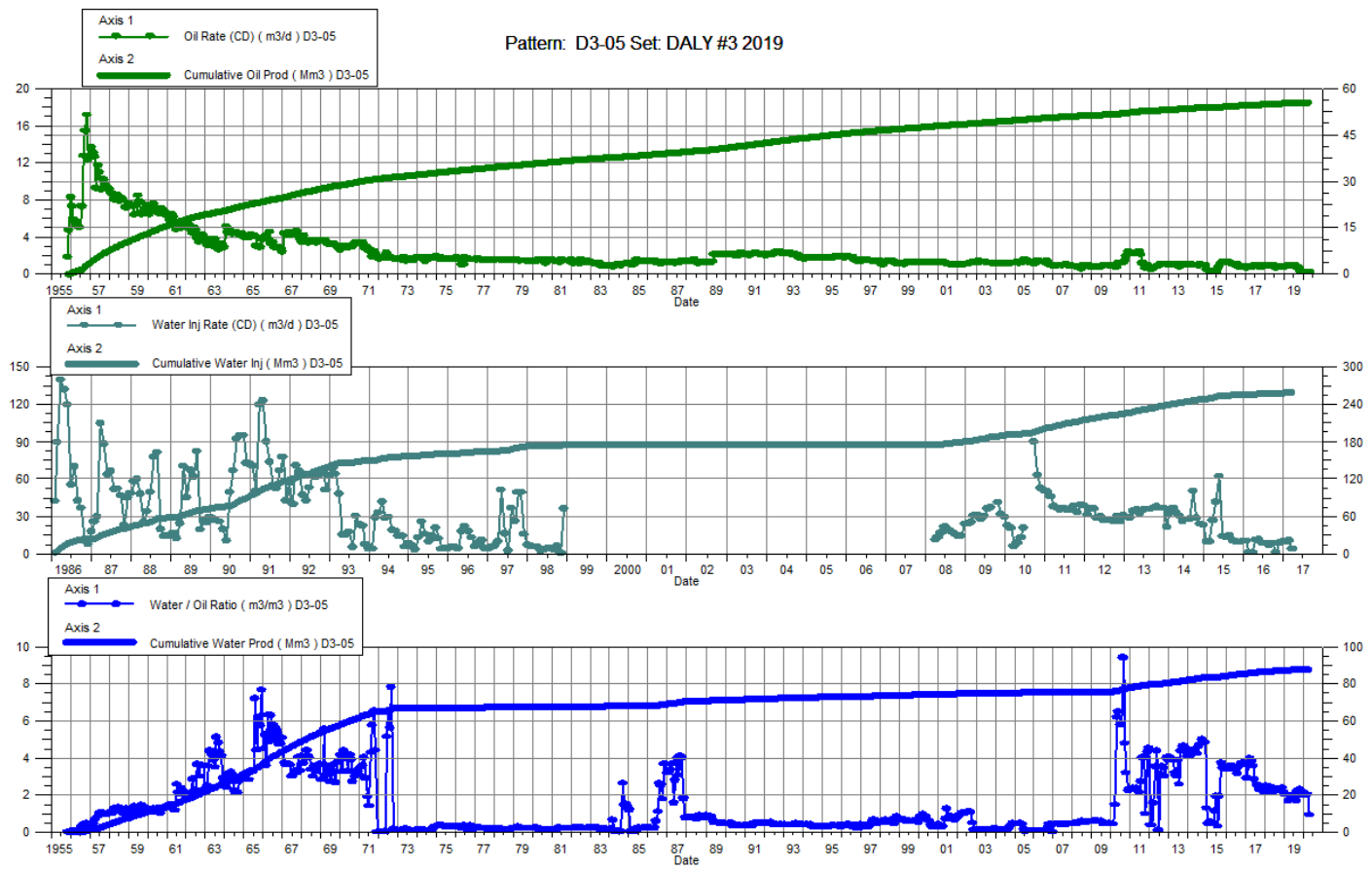
Date	Oil Rate (CD) m3/d	Cum Oil Prod Mm3	Water Rate (CD) m3/d	Cum Water Prod Mm3	Water Inj Rate (CD) m3/d	Cum Water Inj Mm3	Water Oil Ratio m3/m3	Voidage Replacement Ratio	Cum Voidage Replacement Ratio	Water Inj Pressure kPa
1-31-2019	18.45	105.86	33.90	79.13		212.52	1.84		1.14	6,400.00
2-28-2019	18.08	106.37	34.36	80.09		212.52	1.90		1.13	6,400.00
3-31-2019	7.97	106.62	48.76	81.60		212.52	6.12		1.12	6,400.00
4-30-2019	9.48	106.90	60.90	83.43		212.52	6.42		1.11	6,400.00
5-31-2019	11.21	107.25	62.94	85.38		212.52	5.61		1.09	6,400.00
6-30-2019	12.40	107.62	70.02	87.48		212.52	5.65		1.08	6,400.00
7-31-2019	13.16	108.03	53.77	89.15		212.52	4.09		1.07	6,400.00
8-31-2019	14.75	108.49	47.59	90.62		212.52	3.23		1.06	6,400.00
9-30-2019	14.88	108.93	54.27	92.25		212.52	3.65		1.05	6,400.00
10-31-2019	12.71	109.33	50.61	93.82		212.52	3.98		1.04	6,400.00
11-30-2019	10.39	109.64	49.65	95.31		212.52	4.78		1.03	6,400.00
12-31-2019	9.27	109.93	51.13	96.90		212.52	5.51		1.02	6,400.00



Daly Unit No. 3

Pattern P-05 - 00/04-14-010-28W1/00

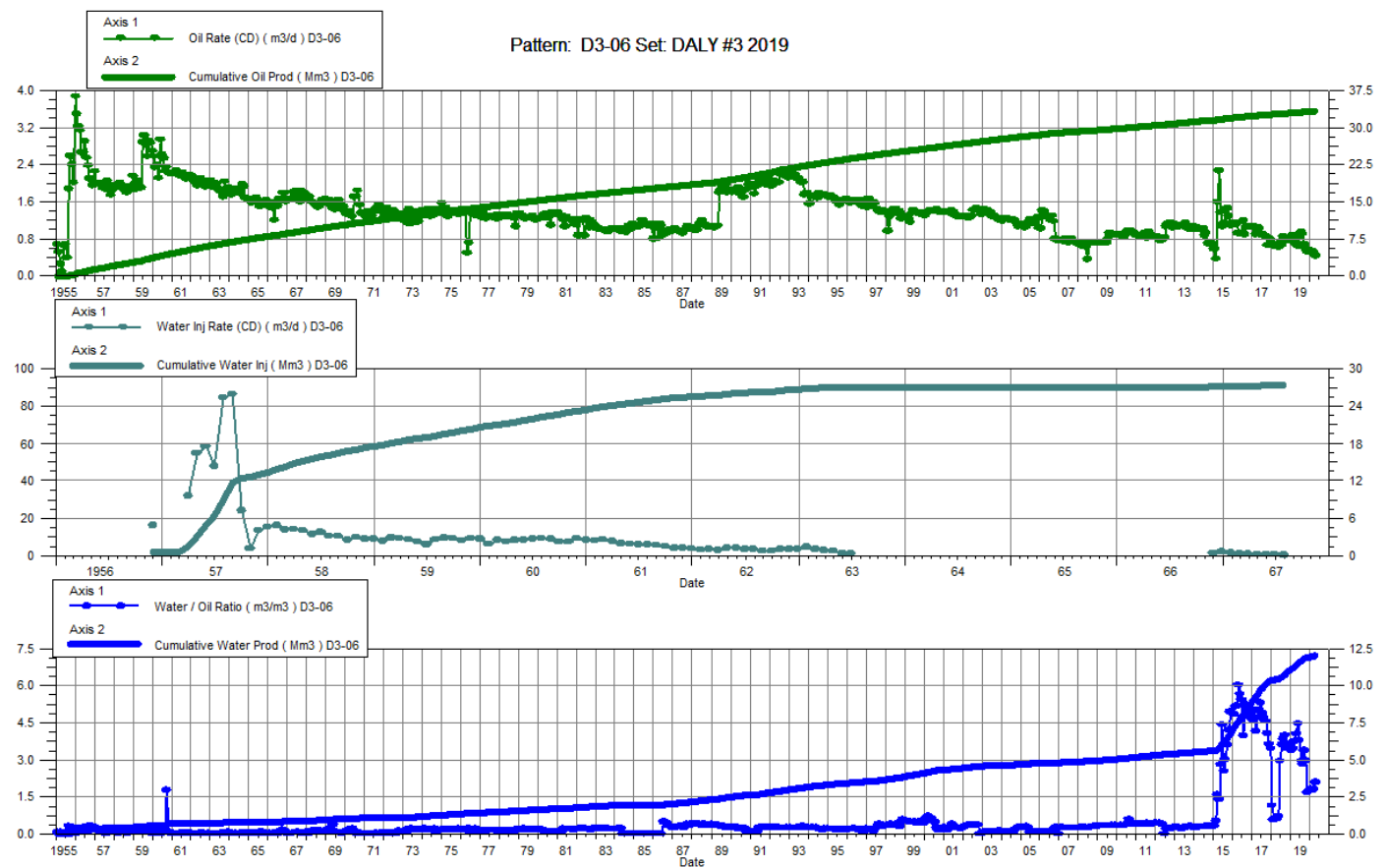
Date	Oil Rate (CD) m3/d	Cum Oil Prod Mm3	Water Rate (CD) m3/d	Cum Water Prod Mm3	Water Inj Rate (CD) m3/d	Cum Water Inj Mm3	Water Oil Ratio m3/m3	Voidage Replacement Ratio	Cum Voidage Replacement Ratio	Water Inj Pressure kPa
1-31-2019	0.84	55.37	1.70	87.06		259.69	2.03		1.81	200.00
2-28-2019	0.89	55.39	1.79	87.11		259.69	2.02		1.81	200.00
3-31-2019	0.95	55.42	1.57	87.15		259.69	1.66		1.81	200.00
4-30-2019	0.95	55.45	1.66	87.20		259.69	1.75		1.81	200.00
5-31-2019	0.91	55.48	1.73	87.26		259.69	1.90		1.81	200.00
6-30-2019	0.95	55.51	1.90	87.32		259.69	2.00		1.81	200.00
7-31-2019	0.96	55.54	1.69	87.37		259.69	1.76		1.80	200.00
8-31-2019	0.93	55.57	1.56	87.42		259.69	1.69		1.80	200.00
9-30-2019	0.74	55.59	1.66	87.47		259.69	2.25		1.80	200.00
10-31-2019	0.57	55.61	1.32	87.51		259.69	2.31		1.80	200.00
11-30-2019	0.30	55.62	0.60	87.52		259.69	1.97		1.80	200.00
12-31-2019	0.32	55.63	0.64	87.54		259.69	2.00		1.80	200.00



Daly Unit No. 3

Pattern P-06 - 00/02-14-010-28W1/00

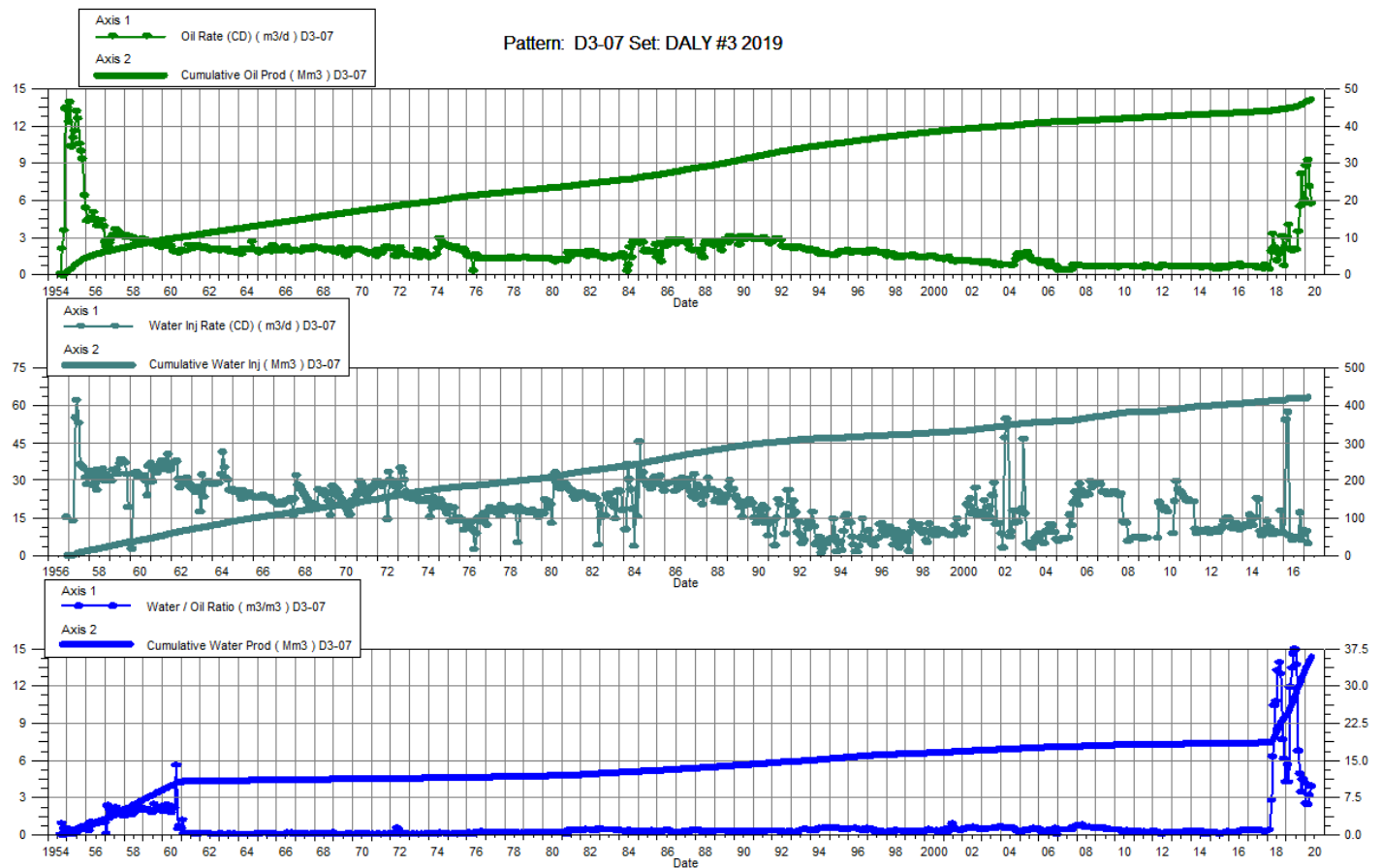
Date	Oil Rate (CD) m3/d	Cum Oil Prod Mm3	Water Rate (CD) m3/d	Cum Water Prod Mm3	Water Inj Rate (CD) m3/d	Cum Water Inj Mm3	Water Oil Ratio m3/m3	Voidage Replacement Ratio	Cum Voidage Replacement Ratio	Water Inj Pressure kPa
1-31-2019	0.83	33.03	2.79	11.10		27.41	3.38		0.61	--
2-28-2019	0.88	33.05	3.04	11.18		27.41	3.45		0.61	--
3-31-2019	0.75	33.07	2.80	11.27		27.41	3.75		0.61	--
4-30-2019	0.68	33.10	2.74	11.35		27.41	4.03		0.61	--
5-31-2019	0.66	33.12	2.91	11.44		27.41	4.45		0.61	--
6-30-2019	0.85	33.14	3.21	11.54		27.41	3.79		0.61	--
7-31-2019	0.95	33.17	2.79	11.62		27.41	2.94		0.60	--
8-31-2019	0.92	33.20	2.60	11.70		27.41	2.84		0.60	--
9-30-2019	0.69	33.22	2.33	11.77		27.41	3.37		0.60	--
10-31-2019	0.58	33.24	1.73	11.83		27.41	2.97		0.60	--
11-30-2019	0.53	33.25	0.90	11.85		27.41	1.69		0.60	--
12-31-2019	0.56	33.27	0.99	11.88		27.41	1.76		0.60	--



Daly Unit No. 3

Pattern P-07 - 00/04-13-010-28W1/00

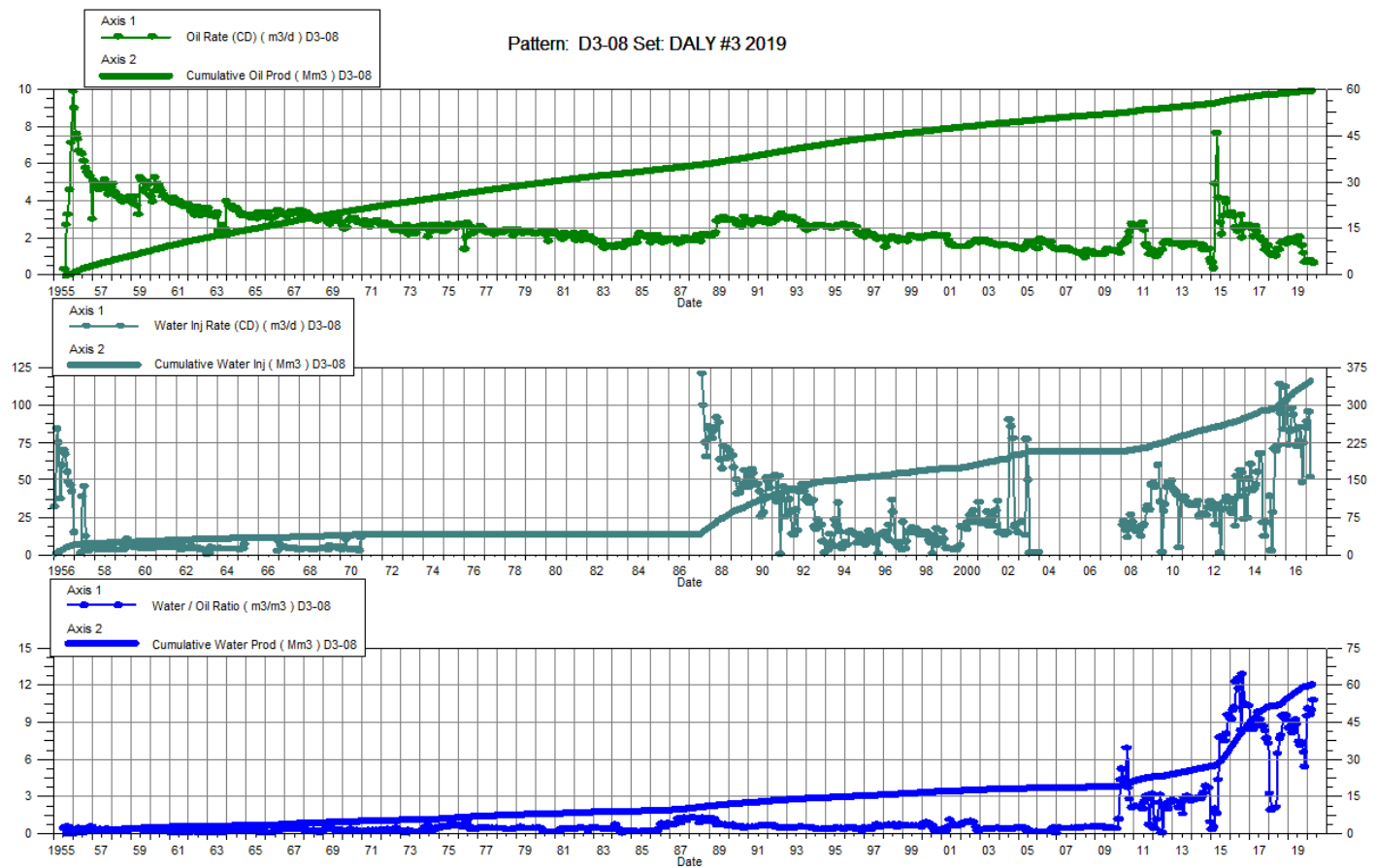
Date	Oil Rate (CD) m3/d	Cum Oil Prod Mm3	Water Rate (CD) m3/d	Cum Water Prod Mm3	Water Inj Rate (CD) m3/d	Cum Water Inj Mm3	Water Oil Ratio m3/m3	Voidage Replacement Ratio	Cum Voidage Replacement Ratio	Water Inj Pressure kPa
1-31-2019	3.05	44.88	17.13	24.32		422.79	5.61		6.04	200.00
2-28-2019	4.09	44.99	17.30	24.81		422.79	4.23		5.98	200.00
3-31-2019	2.12	45.06	25.13	25.59		422.79	11.87		5.91	200.00
4-30-2019	1.95	45.12	26.18	26.37		422.79	13.40		5.84	200.00
5-31-2019	1.94	45.18	28.29	27.25		422.79	14.56		5.77	200.00
6-30-2019	2.14	45.24	31.81	28.20		422.79	14.90		5.69	200.00
7-31-2019	2.07	45.30	28.32	29.08		422.79	13.70		5.62	200.00
8-31-2019	3.52	45.41	23.76	29.82		422.79	6.76		5.56	200.00
9-30-2019	5.54	45.58	27.39	30.64		422.79	4.95		5.48	200.00
10-31-2019	8.16	45.83	28.11	31.51		422.79	3.45		5.41	200.00
11-30-2019	5.71	46.00	25.45	32.27		422.79	4.46		5.34	200.00
12-31-2019	6.02	46.19	25.08	33.05		422.79	4.16		5.28	200.00



Daly Unit No. 3

Pattern P-08 - 00/14-11-010-28W1/00

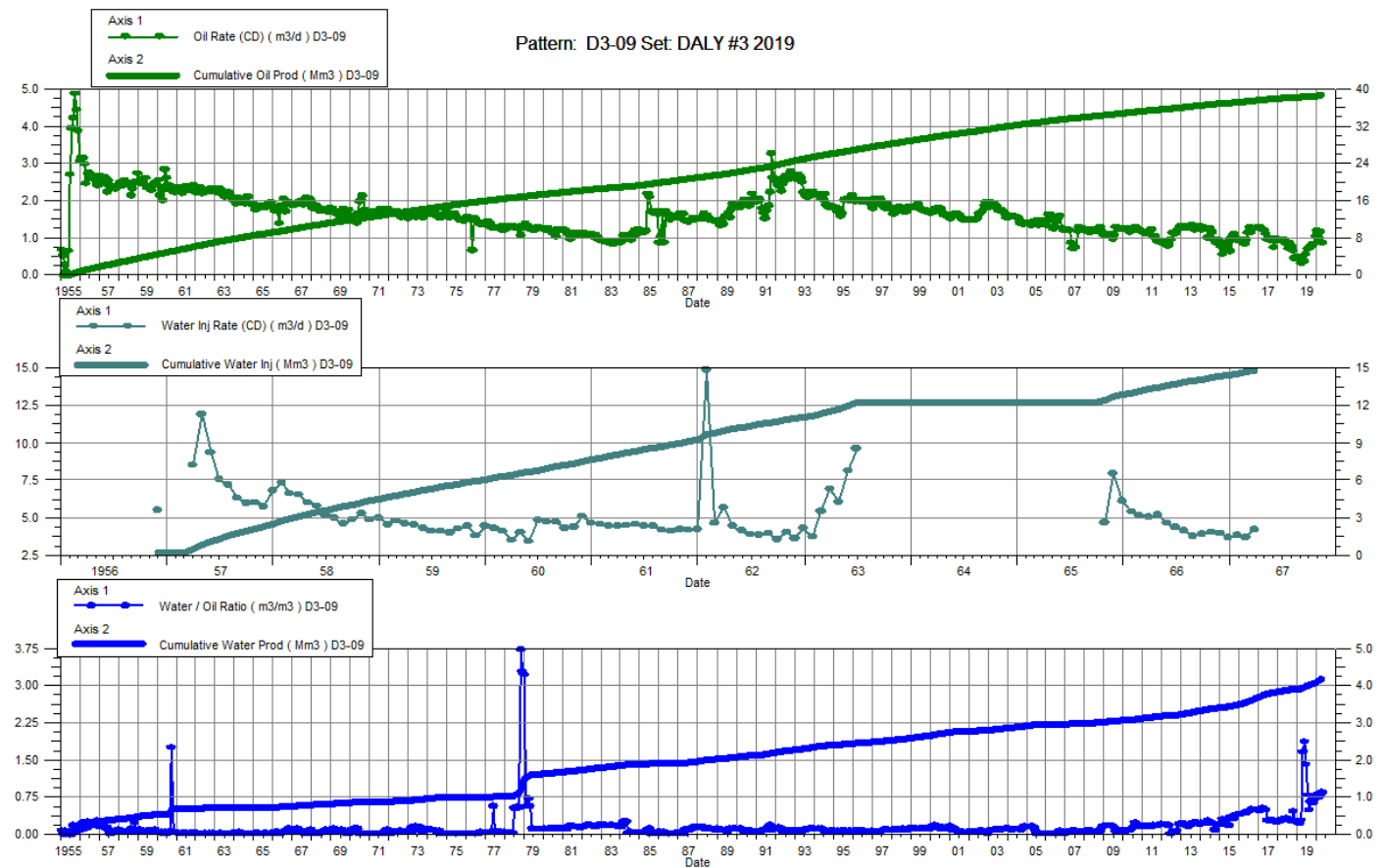
Date	Oil Rate (CD) m3/d	Cum Oil Prod Mm3	Water Rate (CD) m3/d	Cum Water Prod Mm3	Water Inj Rate (CD) m3/d	Cum Water Inj Mm3	Water Oil Ratio m3/m3	Voidage Replacement Ratio	Cum Voidage Replacement Ratio	Water Inj Pressure kPa
1-31-2019	1.86	59.00	15.81	55.04		349.69	8.50		3.04	250.00
2-28-2019	1.97	59.05	16.85	55.51		349.69	8.57		3.02	250.00
3-31-2019	1.92	59.11	15.56	55.99		349.69	8.11		3.01	250.00
4-30-2019	1.83	59.17	15.37	56.45		349.69	8.40		3.00	250.00
5-31-2019	1.77	59.22	16.28	56.96		349.69	9.19		2.98	250.00
6-30-2019	2.01	59.28	17.87	57.50		349.69	8.88		2.97	250.00
7-31-2019	2.11	59.35	15.58	57.98		349.69	7.39		2.95	250.00
8-31-2019	2.04	59.41	14.50	58.43		349.69	7.10		2.94	250.00
9-30-2019	1.59	59.46	11.69	58.78		349.69	7.37		2.93	250.00
10-31-2019	1.19	59.49	7.75	59.02		349.69	6.51		2.92	250.00
11-30-2019	0.69	59.51	3.70	59.13		349.69	5.40		2.92	250.00
12-31-2019	0.81	59.54	7.66	59.37		349.69	9.45		2.91	250.00



Daly Unit No. 3

Pattern P-09 - 00/16-11-010-28W1/00

Date	Oil Rate (CD) m3/d	Cum Oil Prod Mm3	Water Rate (CD) m3/d	Cum Water Prod Mm3	Water Inj Rate (CD) m3/d	Cum Water Inj Mm3	Water Oil Ratio m3/m3	Voidage Replacement Ratio	Cum Voidage Replacement Ratio	Water Inj Pressure kPa
1-31-2019	0.48	38.33	0.11	3.90		14.84	0.23		0.35	--
2-28-2019	0.49	38.35	0.11	3.90		14.84	0.23		0.35	--
3-31-2019	0.32	38.36	0.09	3.91		14.84	0.28		0.35	--
4-30-2019	0.38	38.37	0.63	3.92		14.84	1.66		0.35	--
5-31-2019	0.37	38.38	0.70	3.95		14.84	1.86		0.35	--
6-30-2019	0.56	38.40	0.78	3.97		14.84	1.40		0.34	--
7-31-2019	0.70	38.42	0.55	3.99		14.84	0.78		0.34	--
8-31-2019	0.72	38.44	0.35	4.00		14.84	0.49		0.34	--
9-30-2019	0.77	38.46	0.50	4.01		14.84	0.65		0.34	--
10-31-2019	0.82	38.49	0.54	4.03		14.84	0.66		0.34	--
11-30-2019	0.84	38.51	0.53	4.05		14.84	0.63		0.34	--
12-31-2019	1.05	38.55	0.75	4.07		14.84	0.72		0.34	--

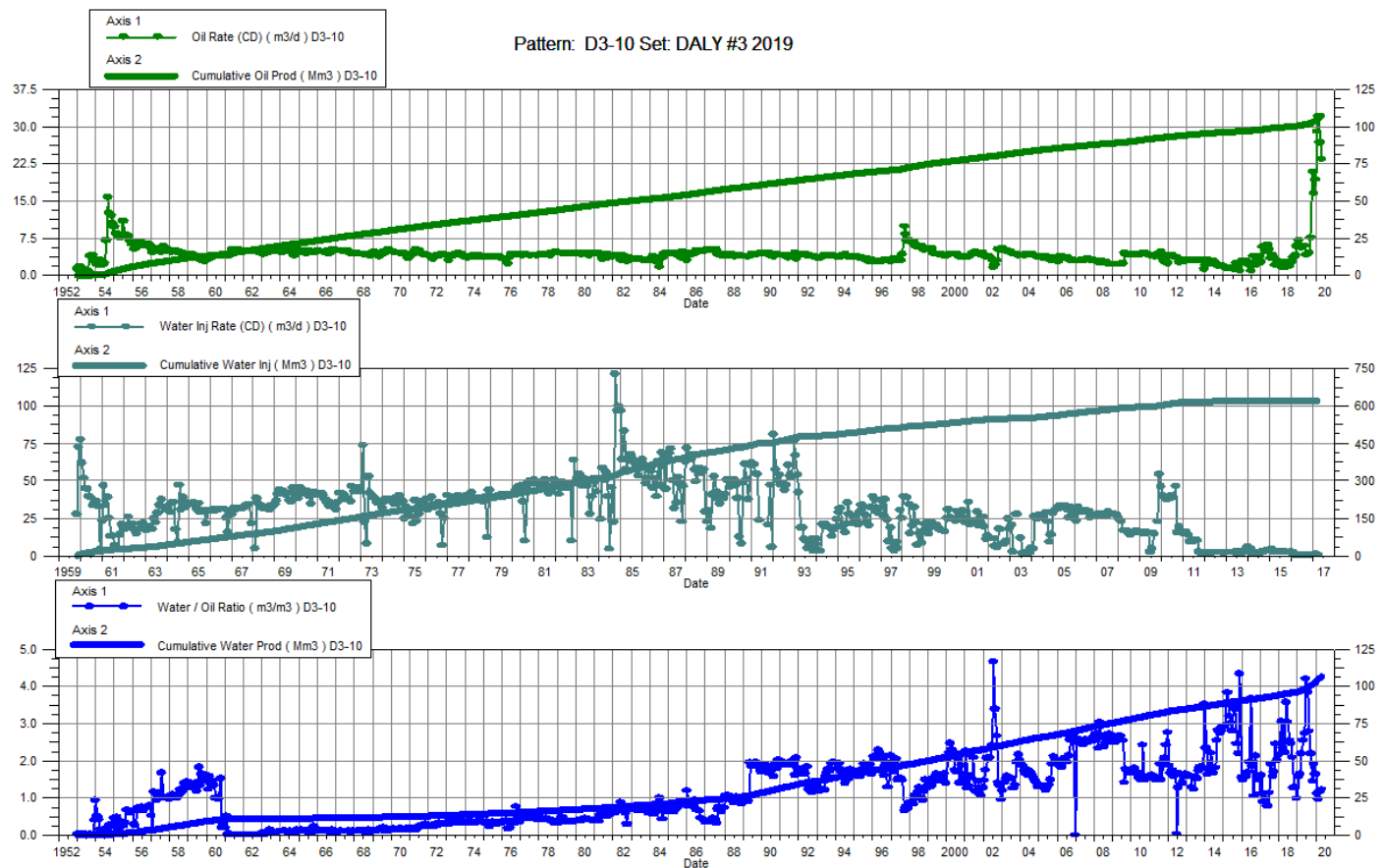


Daly Unit No. 3

Pattern P-10 – 00/14-12-010-28W1/00

P-10 – B0/14-12-010-28W1/00

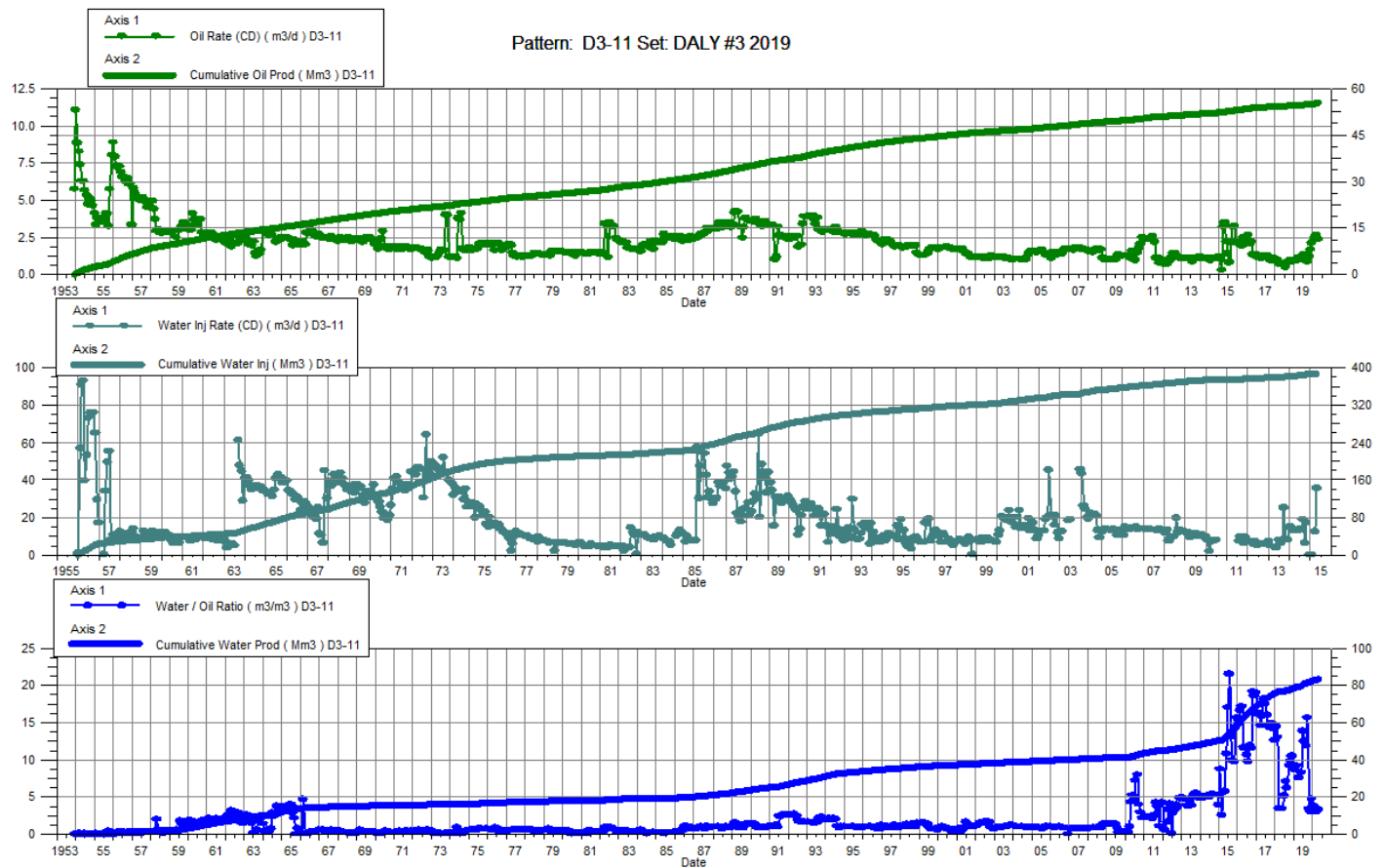
Date	Oil Rate (CD) m3/d	Cum Oil Prod Mm3	Water Rate (CD) m3/d	Cum Water Prod Mm3	Water Inj Rate (CD) m3/d	Cum Water Inj Mm3	Water Oil Ratio m3/m3	Voidage Replacement Ratio	Cum Voidage Replacement Ratio	Water Inj Pressure kPa	Water Inj Pressure kPa
1-31-2019	7.13	101.00	11.13	96.32		623.82	1.56		3.13	507.10	50.00
2-28-2019	5.99	101.16	9.87	96.59		623.82	1.65		3.12	507.26	50.00
3-31-2019	5.54	101.34	12.16	96.97		623.82	2.19		3.12	344.74	50.00
4-30-2019	6.04	101.52	15.32	97.43		623.82	2.54		3.11	289.58	50.00
5-31-2019	6.08	101.70	16.59	97.94		623.82	2.73		3.09	275.79	50.00
6-30-2019	4.18	101.83	17.55	98.47		623.82	4.20		3.08	275.79	41.00
7-31-2019	4.37	101.97	16.71	98.99		623.82	3.83		3.07	275.79	41.00
8-31-2019	4.72	102.11	13.15	99.40		623.82	2.79		3.07	275.79	41.00
9-30-2019	7.65	102.34	16.80	99.90		623.82	2.20		3.06	275.79	41.00
10-31-2019	20.94	102.99	30.11	100.83		623.82	1.44		3.03	275.79	41.00
11-30-2019	16.61	103.49	31.67	101.78		623.82	1.91		3.01	275.79	41.00
12-31-2019	19.36	104.09	31.63	102.76		623.82	1.63		2.99	275.79	41.00



Daly Unit No. 3

Pattern P-11 - 00/12-11-010-28W1/00

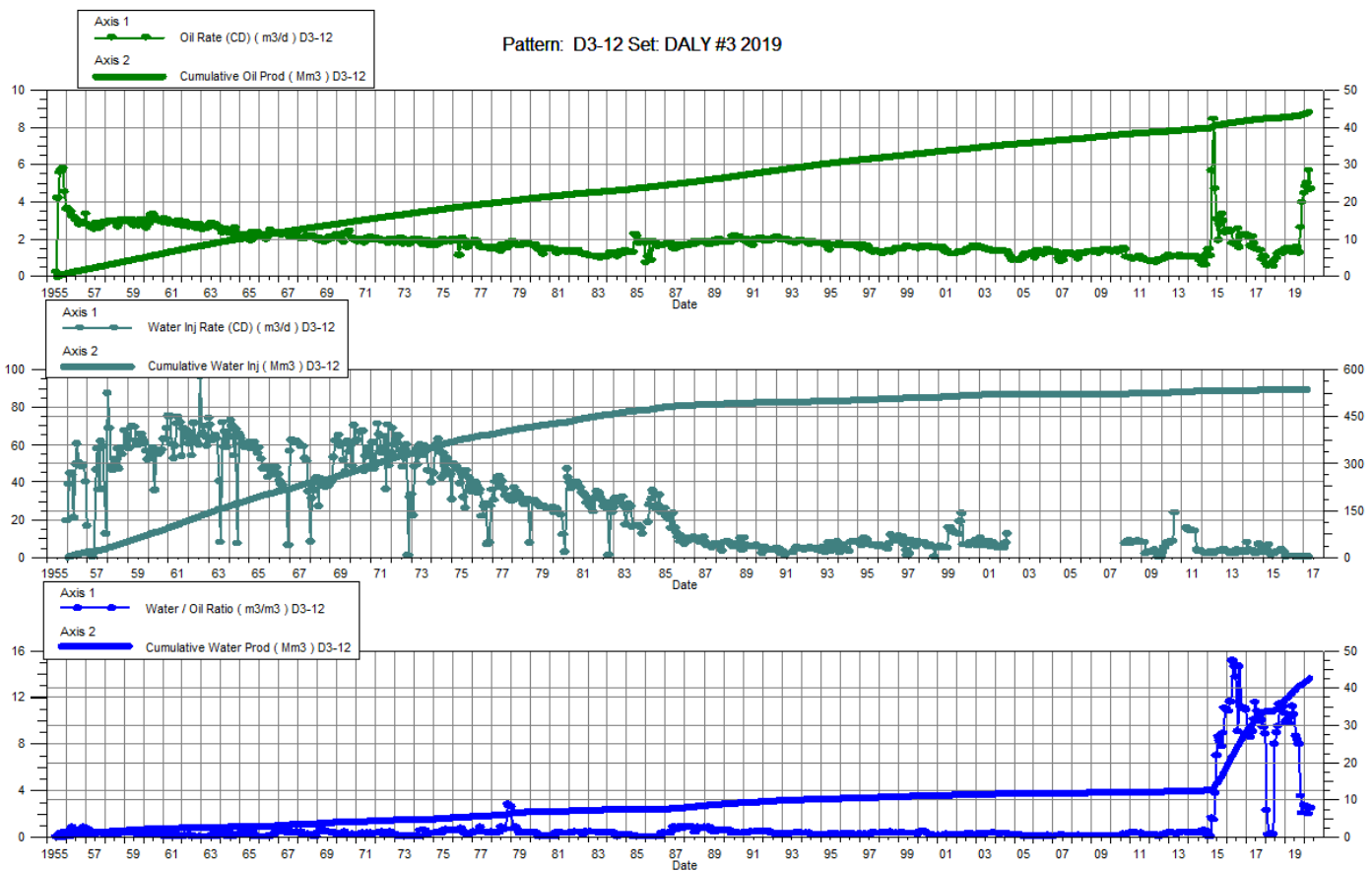
Date	Oil Rate (CD) m3/d	Cum Oil Prod Mm3	Water Rate (CD) m3/d	Cum Water Prod Mm3	Water Inj Rate (CD) m3/d	Cum Water Inj Mm3	Water Oil Ratio m3/m3	Voidage Replacement Ratio	Cum Voidage Replacement Ratio	Water Inj Pressure kPa
1-31-2019	1.02	54.74	8.84	78.44		388.55	8.66		2.89	2,500.00
2-28-2019	0.98	54.77	9.04	78.70		388.55	9.21		2.89	2,500.00
3-31-2019	1.13	54.81	8.47	78.96		388.55	7.50		2.88	2,500.00
4-30-2019	1.12	54.84	8.48	79.21		388.55	7.58		2.88	2,500.00
5-31-2019	1.08	54.87	8.91	79.49		388.55	8.27		2.87	2,500.00
6-30-2019	1.34	54.91	18.63	80.05		388.55	13.87		2.86	110.00
7-31-2019	1.35	54.96	16.95	80.57		388.55	12.52		2.85	110.00
8-31-2019	1.29	55.00	15.28	81.05		388.55	11.80		2.83	110.00
9-30-2019	0.90	55.02	14.08	81.47		388.55	15.59		2.83	110.00
10-31-2019	1.22	55.06	4.15	81.60		388.55	3.40		2.82	110.00
11-30-2019	1.72	55.11	5.22	81.76		388.55	3.03		2.82	110.00
12-31-2019	2.14	55.18	10.26	82.07		388.55	4.79		2.81	110.00



Daly Unit No. 3

Pattern P-12 - 00/10-11-010-28W1/00

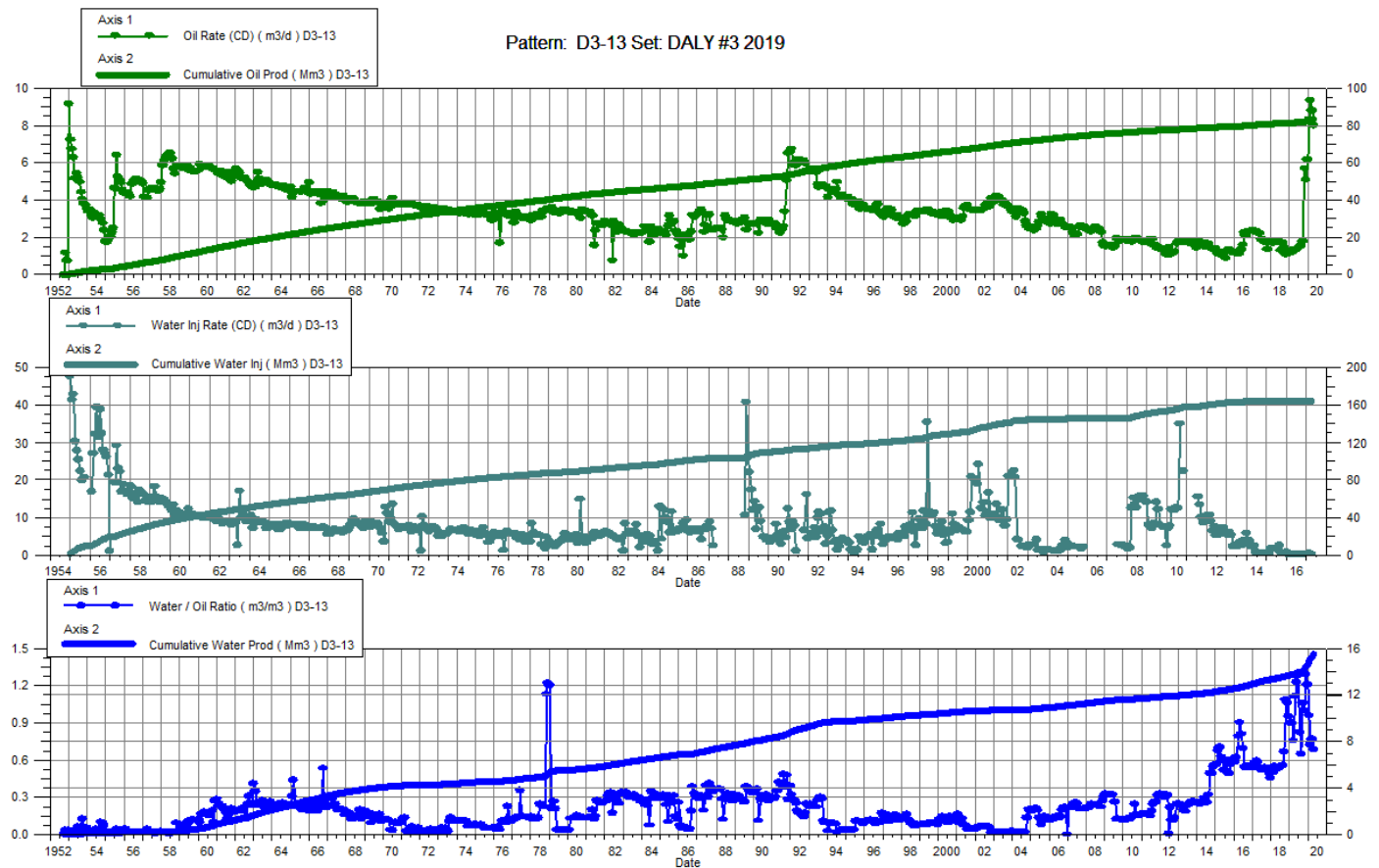
Date	Oil Rate (CD) m3/d	Cum Oil Prod Mm3	Water Rate (CD) m3/d	Cum Water Prod Mm3	Water Inj Rate (CD) m3/d	Cum Water Inj Mm3	Water Oil Ratio m3/m3	Voidage Replacement Ratio	Cum Voidage Replacement Ratio	Water Inj Pressure kPa
1-31-2019	1.46	42.87	14.29	36.89		538.13	9.82		6.68	6,000.00
2-28-2019	1.52	42.92	15.24	37.32		538.13	10.03		6.64	6,000.00
3-31-2019	1.46	42.96	14.15	37.76		538.13	9.73		6.60	6,000.00
4-30-2019	1.35	43.00	13.89	38.18		538.13	10.27		6.56	6,000.00
5-31-2019	1.31	43.04	14.73	38.63		538.13	11.21		6.52	6,000.00
6-30-2019	1.53	43.09	16.17	39.12		538.13	10.54		6.48	6,000.00
7-31-2019	1.62	43.14	14.07	39.55		538.13	8.67		6.44	6,000.00
8-31-2019	1.57	43.19	13.10	39.96		538.13	8.32		6.41	6,000.00
9-30-2019	1.29	43.23	10.28	40.27		538.13	8.00		6.38	6,000.00
10-31-2019	2.64	43.31	9.34	40.56		538.13	3.53		6.35	6,000.00
11-30-2019	4.01	43.43	8.39	40.81		538.13	2.09		6.33	6,000.00
12-31-2019	4.48	43.57	12.39	41.19		538.13	2.76		6.29	6,000.00



Daly Unit No. 3

Pattern P-13 - 00/12-12-010-28W1/00

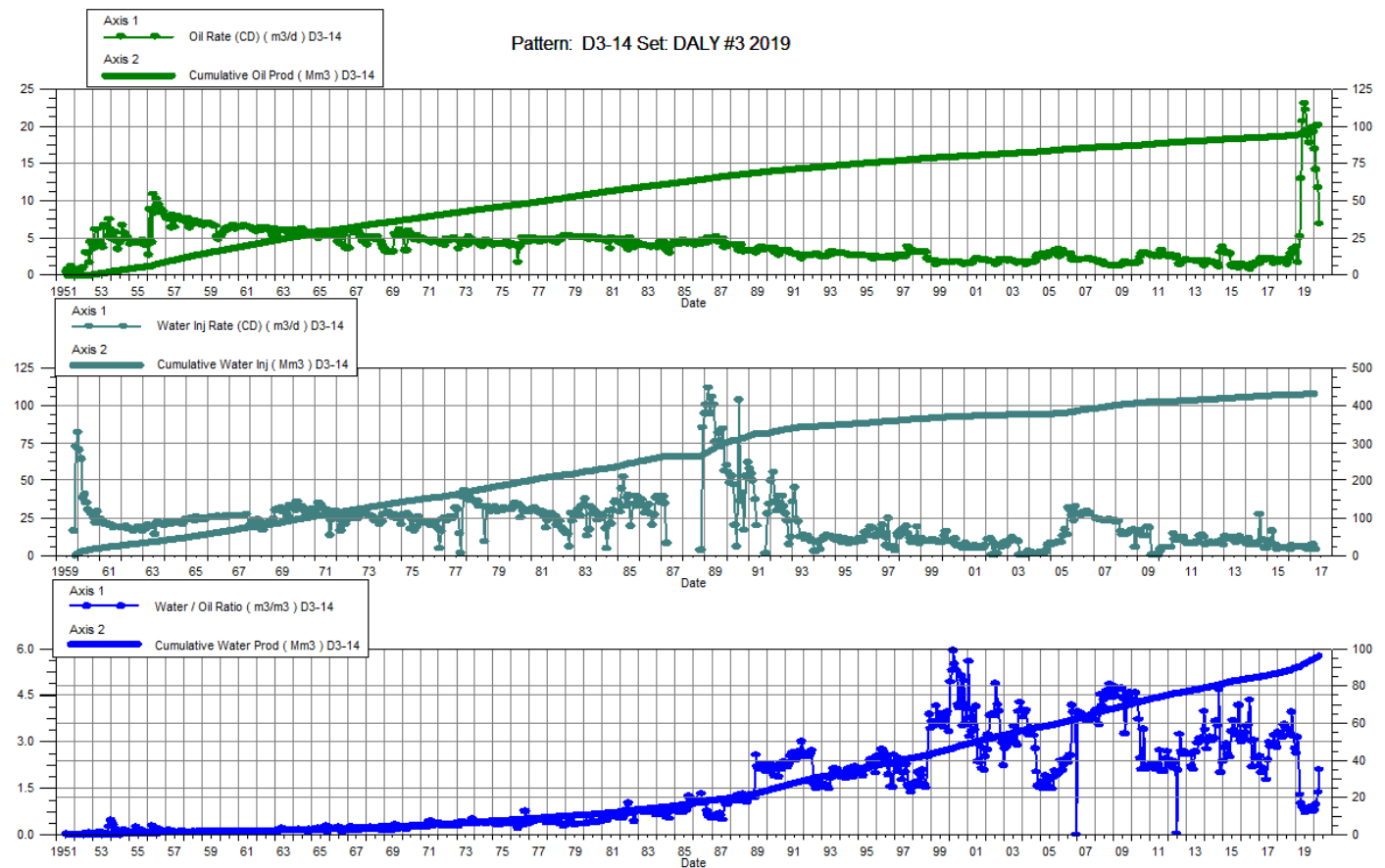
Date	Oil Rate (CD) m3/d	Cum Oil Prod Mm3	Water Rate (CD) m3/d	Cum Water Prod Mm3	Water Inj Rate (CD) m3/d	Cum Water Inj Mm3	Water Oil Ratio m3/m3	Voidage Replacement Ratio	Cum Voidage Replacement Ratio	Water Inj Pressure kPa
1-31-2019	1.19	81.72	1.06	13.67		165.40	0.89		1.71	894.09
2-28-2019	1.20	81.75	1.07	13.70		165.40	0.90		1.71	797.82
3-31-2019	1.33	81.79	1.01	13.73		165.40	0.75		1.70	689.47
4-30-2019	1.34	81.83	1.49	13.77		165.40	1.11		1.70	634.32
5-31-2019	1.35	81.87	1.66	13.82		165.40	1.22		1.70	620.53
6-30-2019	1.42	81.92	1.81	13.88		165.40	1.28		1.70	620.53
7-31-2019	1.54	81.96	1.27	13.92		165.40	0.82		1.70	620.53
8-31-2019	1.54	82.01	1.00	13.95		165.40	0.65		1.70	620.53
9-30-2019	1.78	82.07	1.89	14.01		165.40	1.06		1.69	620.53
10-31-2019	5.70	82.24	5.69	14.18		165.40	1.00		1.69	620.53
11-30-2019	5.10	82.40	6.57	14.38		165.40	1.29		1.68	620.53
12-31-2019	6.18	82.59	7.45	14.61		165.40	1.21		1.67	620.53



Daly Unit No. 3

Pattern P-14 - 00/10-12-010-28W1/00

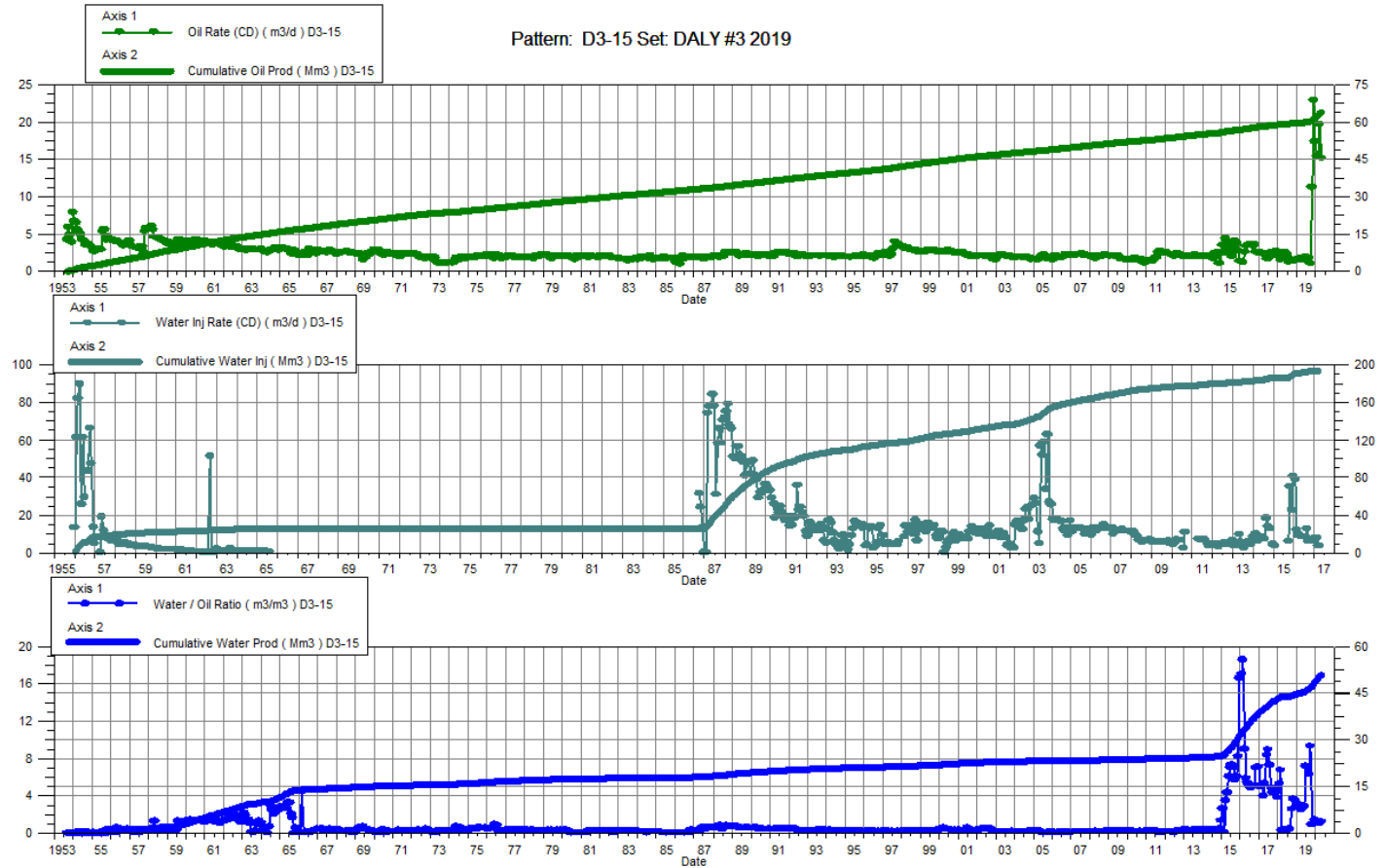
Date	Oil Rate (CD) m3/d	Cum Oil Prod Mm3	Water Rate (CD) m3/d	Cum Water Prod Mm3	Water Inj Rate (CD) m3/d	Cum Water Inj Mm3	Water Oil Ratio m3/m3	Voidage Replacement Ratio	Cum Voidage Replacement Ratio	Water Inj Pressure kPa
1-31-2019	3.82	94.49	10.03	89.70		432.92	2.62		2.33	1,723.69
2-28-2019	1.73	94.54	5.44	89.86		432.92	3.15		2.33	1,723.69
3-31-2019	5.16	94.70	6.64	90.06		432.92	1.29		2.32	1,723.69
4-30-2019	13.00	95.09	13.13	90.46		432.92	1.01		2.31	1,447.90
5-31-2019	20.69	95.73	18.20	91.02		432.92	0.88		2.30	1,378.95
6-30-2019	23.08	96.42	18.66	91.58		432.92	0.81		2.28	1,378.95
7-31-2019	22.24	97.11	15.73	92.07		432.92	0.71		2.27	1,378.95
8-31-2019	18.78	97.69	14.13	92.50		432.92	0.75		2.25	1,378.95
9-30-2019	17.78	98.23	15.37	92.97		432.92	0.86		2.24	1,378.95
10-31-2019	17.81	98.78	13.57	93.39		432.92	0.76		2.23	1,378.95
11-30-2019	19.11	99.35	14.28	93.81		432.92	0.75		2.22	1,378.95
12-31-2019	19.22	99.95	14.21	94.26		432.92	0.74		2.21	1,378.95



Daly Unit No. 3

Pattern P-15 - 00/06-11-010-28W1/00

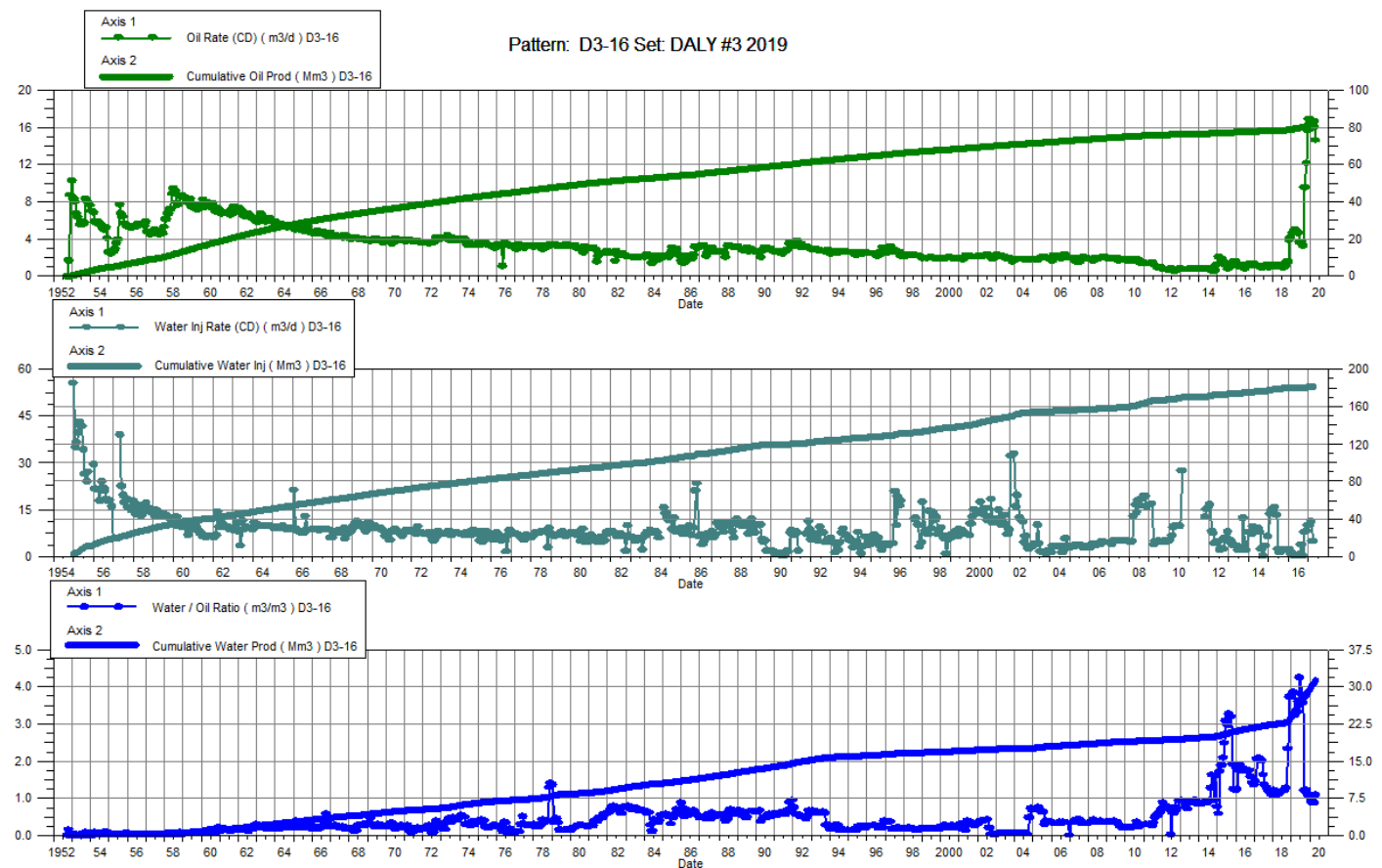
Date	Oil Rate (CD) m3/d	Cum Oil Prod Mm3	Water Rate (CD) m3/d	Cum Water Prod Mm3	Water Inj Rate (CD) m3/d	Cum Water Inj Mm3	Water Oil Ratio m3/m3	Voidage Replacement Ratio	Cum Voidage Replacement Ratio	Water Inj Pressure kPa
1-31-2019	1.63	59.78	4.86	44.65		194.67	2.99		1.84	1,300.00
2-28-2019	1.64	59.83	4.95	44.78		194.67	3.01		1.84	1,300.00
3-31-2019	1.80	59.88	4.61	44.93		194.67	2.56		1.84	1,300.00
4-30-2019	1.75	59.94	4.60	45.06		194.67	2.63		1.83	1,300.00
5-31-2019	1.67	59.99	4.80	45.21		194.67	2.88		1.83	1,300.00
6-30-2019	1.97	60.05	14.12	45.64		194.67	7.17		1.82	1,300.00
7-31-2019	1.83	60.10	13.00	46.04		194.67	7.12		1.81	1,300.00
8-31-2019	1.85	60.16	11.63	46.40		194.67	6.28		1.81	1,300.00
9-30-2019	1.15	60.20	10.75	46.72		194.67	9.33		1.80	1,300.00
10-31-2019	11.30	60.55	10.80	47.06		194.67	0.96		1.79	1,300.00
11-30-2019	22.90	61.23	24.72	47.80		194.67	1.08		1.77	1,300.00
12-31-2019	17.42	61.77	25.23	48.58		194.67	1.45		1.75	1,300.00



Daly Unit No. 3

Pattern P-16 - 00/08-11-010-28W1/00

Date	Oil Rate (CD) m3/d	Cum Oil Prod Mm3	Water Rate (CD) m3/d	Cum Water Prod Mm3	Water Inj Rate (CD) m3/d	Cum Water Inj Mm3	Water Oil Ratio m3/m3	Voidage Replacement Ratio	Cum Voidage Replacement Ratio	Water Inj Pressure kPa
1-31-2019	4.65	79.22	17.71	24.25		182.06	3.81		1.73	1,310.00
2-28-2019	4.67	79.35	17.94	24.75		182.06	3.84		1.72	1,310.00
3-31-2019	5.06	79.51	16.32	25.25		182.06	3.23		1.71	1,310.00
4-30-2019	4.84	79.65	16.02	25.74		182.06	3.31		1.70	1,310.00
5-31-2019	4.65	79.80	16.73	26.25		182.06	3.60		1.69	1,310.00
6-30-2019	3.67	79.91	15.52	26.72		182.06	4.23		1.68	1,310.00
7-31-2019	3.65	80.02	13.80	27.15		182.06	3.79		1.68	1,310.00
8-31-2019	3.28	80.12	11.72	27.51		182.06	3.57		1.67	1,310.00
9-30-2019	9.55	80.41	11.51	27.86		182.06	1.21		1.66	1,310.00
10-31-2019	12.18	80.78	14.98	28.32		182.06	1.23		1.65	1,310.00
11-30-2019	15.61	81.25	17.54	28.85		182.06	1.12		1.63	1,310.00
12-31-2019	16.83	81.77	17.79	29.40		182.06	1.06		1.62	1,310.00

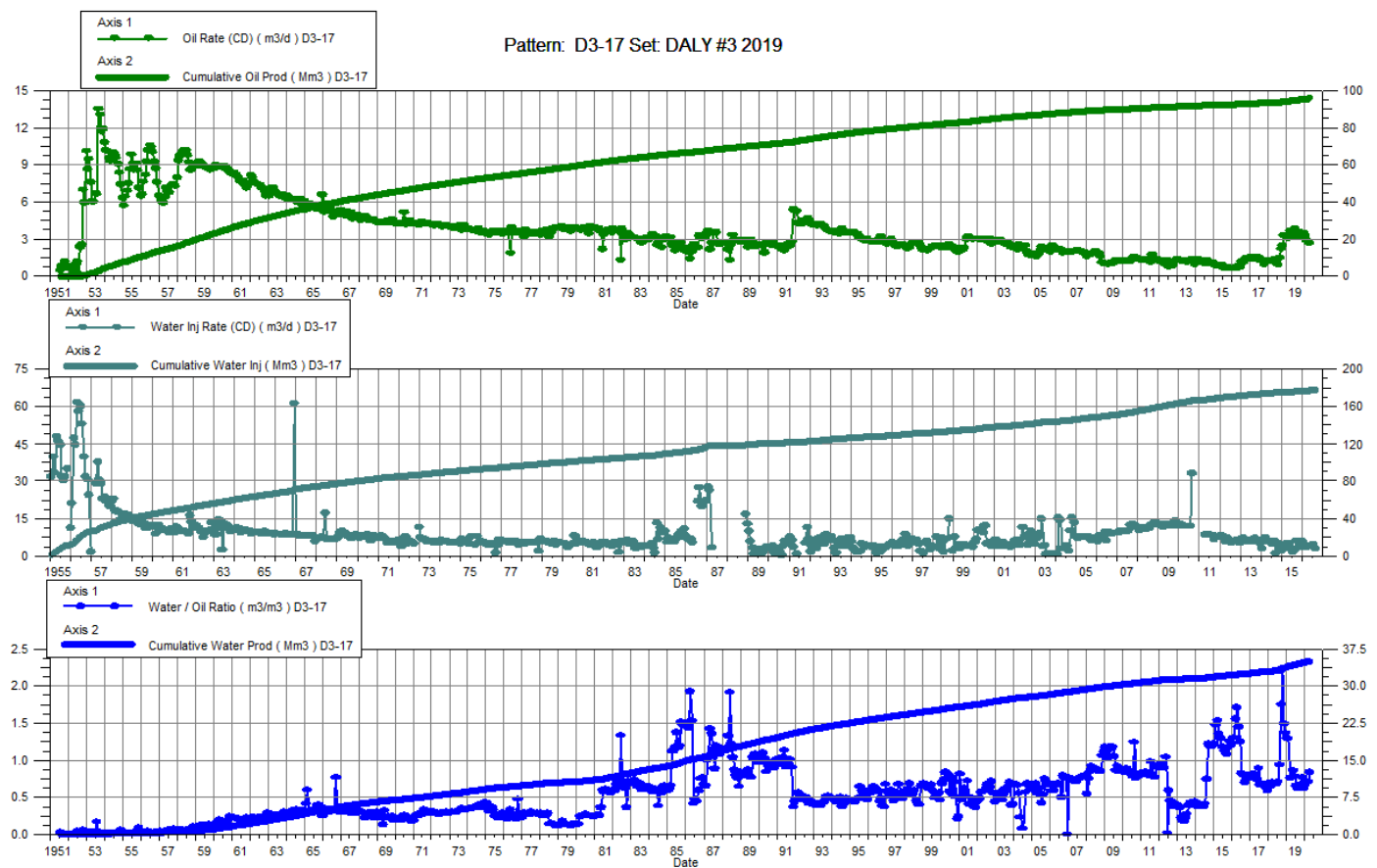


Daly Unit No. 3

Pattern P-17 – 00/06-12-010-28W1/00

P-17 – A0/05-12-010-28W1/00

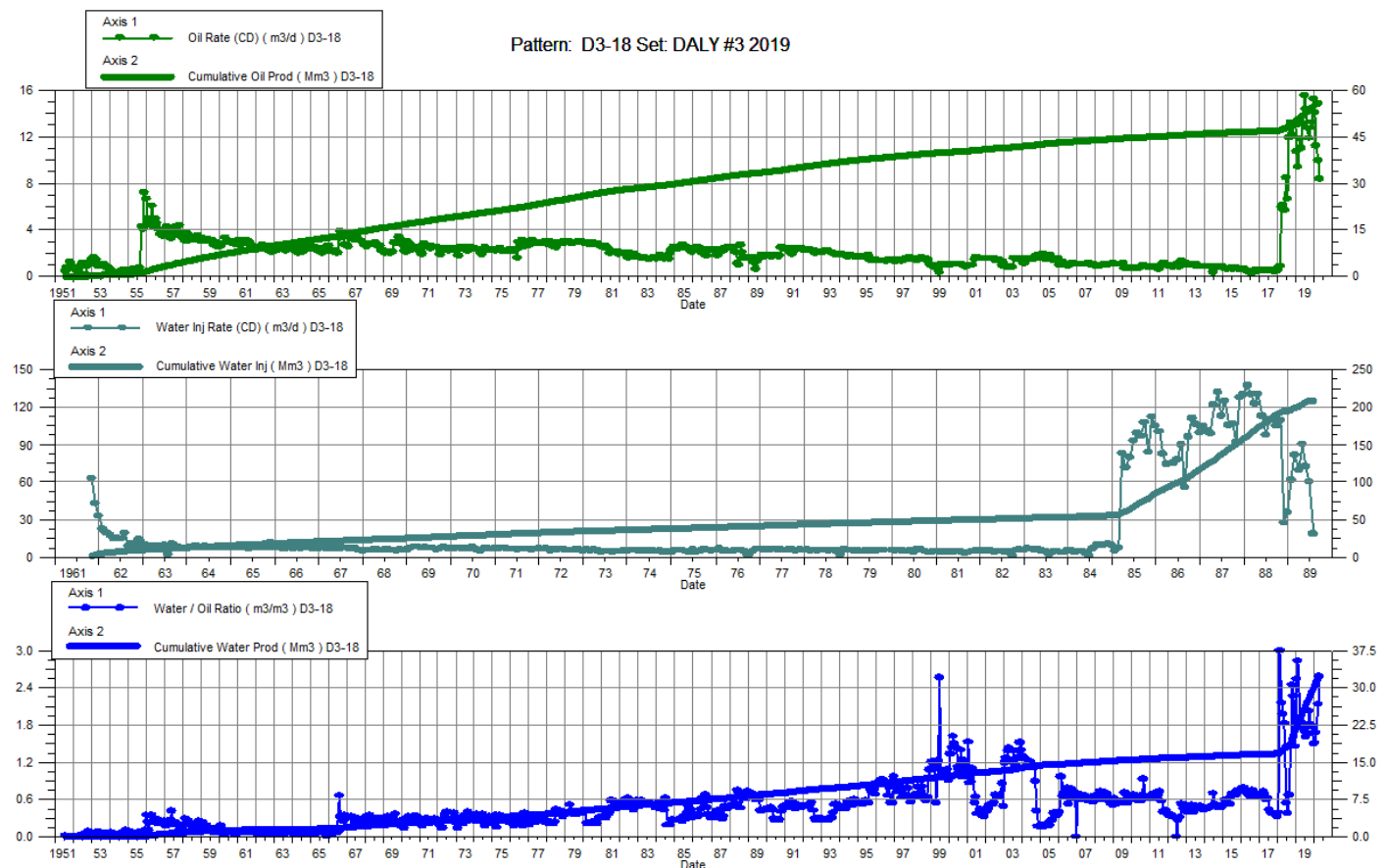
Date	Oil Rate (CD) m3/d	Cum Oil Prod Mm3	Water Rate (CD) m3/d	Cum Water Prod Mm3	Water Inj Rate (CD) m3/d	Cum Water Inj Mm3	Water Oil Ratio m3/m3	Voidage Replacement Ratio	Cum Voidage Replacement Ratio	Water Inj Pressure kPa	Water Inj Pressure kPa
1-31-2019	3.28	94.42	4.24	33.77		178.00	1.29		1.37	389.22	572.71
2-28-2019	3.09	94.50	3.98	33.88		178.00	1.29		1.37	300.41	450.62
3-31-2019	3.69	94.62	2.80	33.97		178.00	0.76		1.37	137.89	206.84
4-30-2019	3.35	94.72	2.56	34.05		178.00	0.77		1.36	137.89	206.84
5-31-2019	3.22	94.82	2.77	34.13		178.00	0.86		1.36	137.89	206.84
6-30-2019	3.85	94.93	3.01	34.22		178.00	0.78		1.36	137.89	206.84
7-31-2019	3.60	95.05	2.35	34.30		178.00	0.65		1.36	137.89	206.84
8-31-2019	3.46	95.15	2.14	34.36		178.00	0.62		1.36	137.89	206.84
9-30-2019	3.61	95.26	2.33	34.43		178.00	0.64		1.35	137.89	206.84
10-31-2019	3.38	95.37	2.26	34.50		178.00	0.67		1.35	137.89	206.84
11-30-2019	3.14	95.46	2.41	34.58		178.00	0.77		1.35	137.89	206.84
12-31-2019	3.49	95.57	2.18	34.64		178.00	0.62		1.35	137.89	206.84



Daly Unit No. 3

Pattern P-18 - 00/08-12-010-28W1/00

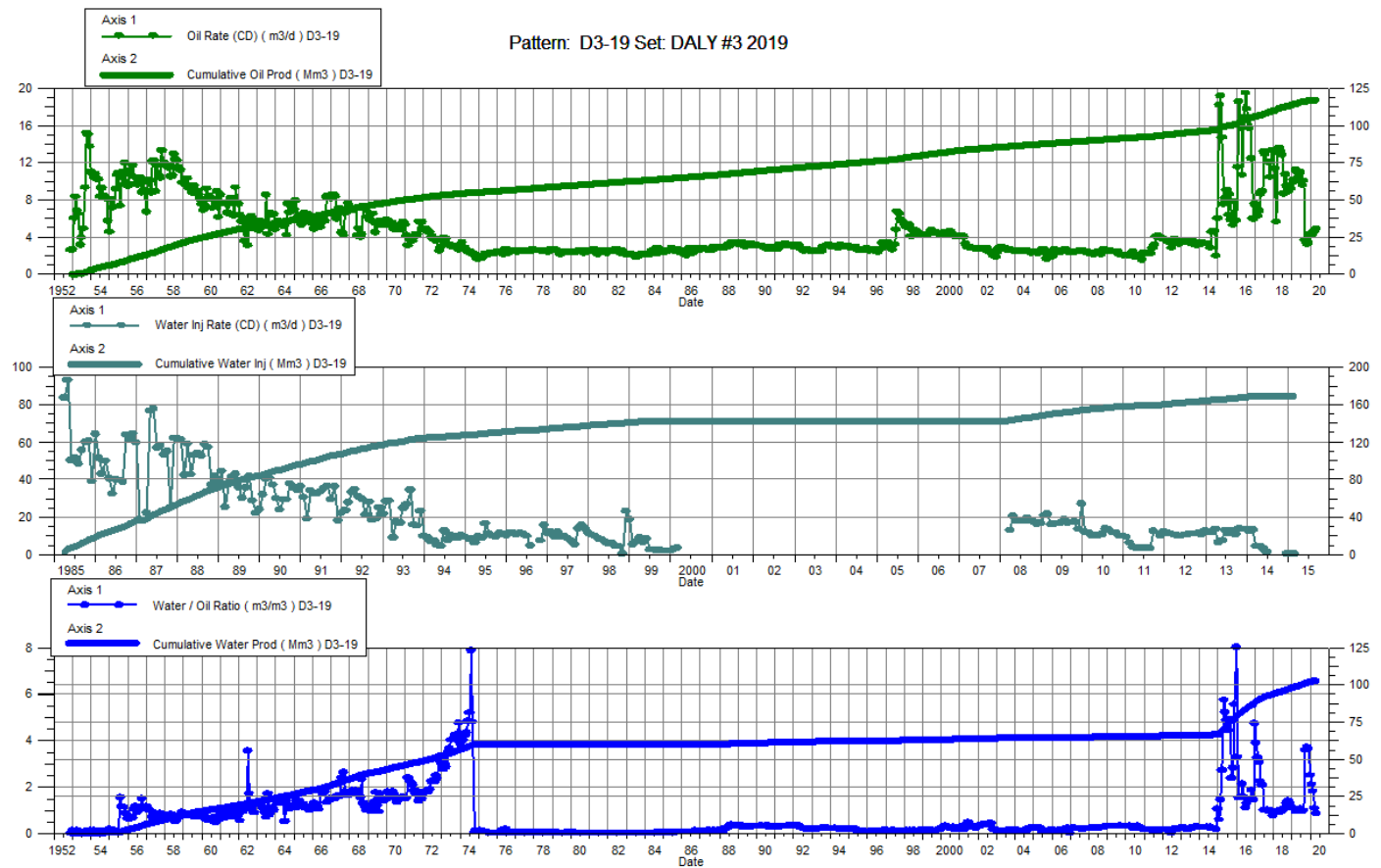
Date	Oil Rate (CD) m3/d	Cum Oil Prod Mm3	Water Rate (CD) m3/d	Cum Water Prod Mm3	Water Inj Rate (CD) m3/d	Cum Water Inj Mm3	Water Oil Ratio m3/m3	Voidage Replacement Ratio	Cum Voidage Replacement Ratio	Water Inj Pressure kPa
1-31-2019	10.76	50.45	27.29	22.14		209.39	2.54		2.85	--
2-28-2019	9.45	50.71	26.71	22.89		209.39	2.83		2.81	--
3-31-2019	11.81	51.08	22.46	23.58		209.39	1.90		2.77	--
4-30-2019	11.02	51.41	20.37	24.19		209.39	1.85		2.73	--
5-31-2019	13.07	51.82	23.03	24.91		209.39	1.76		2.69	--
6-30-2019	15.56	52.28	26.31	25.70		209.39	1.69		2.65	--
7-31-2019	14.34	52.73	22.98	26.41		209.39	1.60		2.61	--
8-31-2019	12.76	53.12	21.25	27.07		209.39	1.67		2.58	--
9-30-2019	11.89	53.48	23.98	27.79		209.39	2.02		2.54	--
10-31-2019	12.75	53.88	23.06	28.50		209.39	1.81		2.51	--
11-30-2019	13.23	54.27	23.50	29.21		209.39	1.78		2.48	--
12-31-2019	15.22	54.74	22.62	29.91		209.39	1.49		2.44	--



Daly Unit No. 3

Pattern P-19 - 00/13-02-010-28W1/00

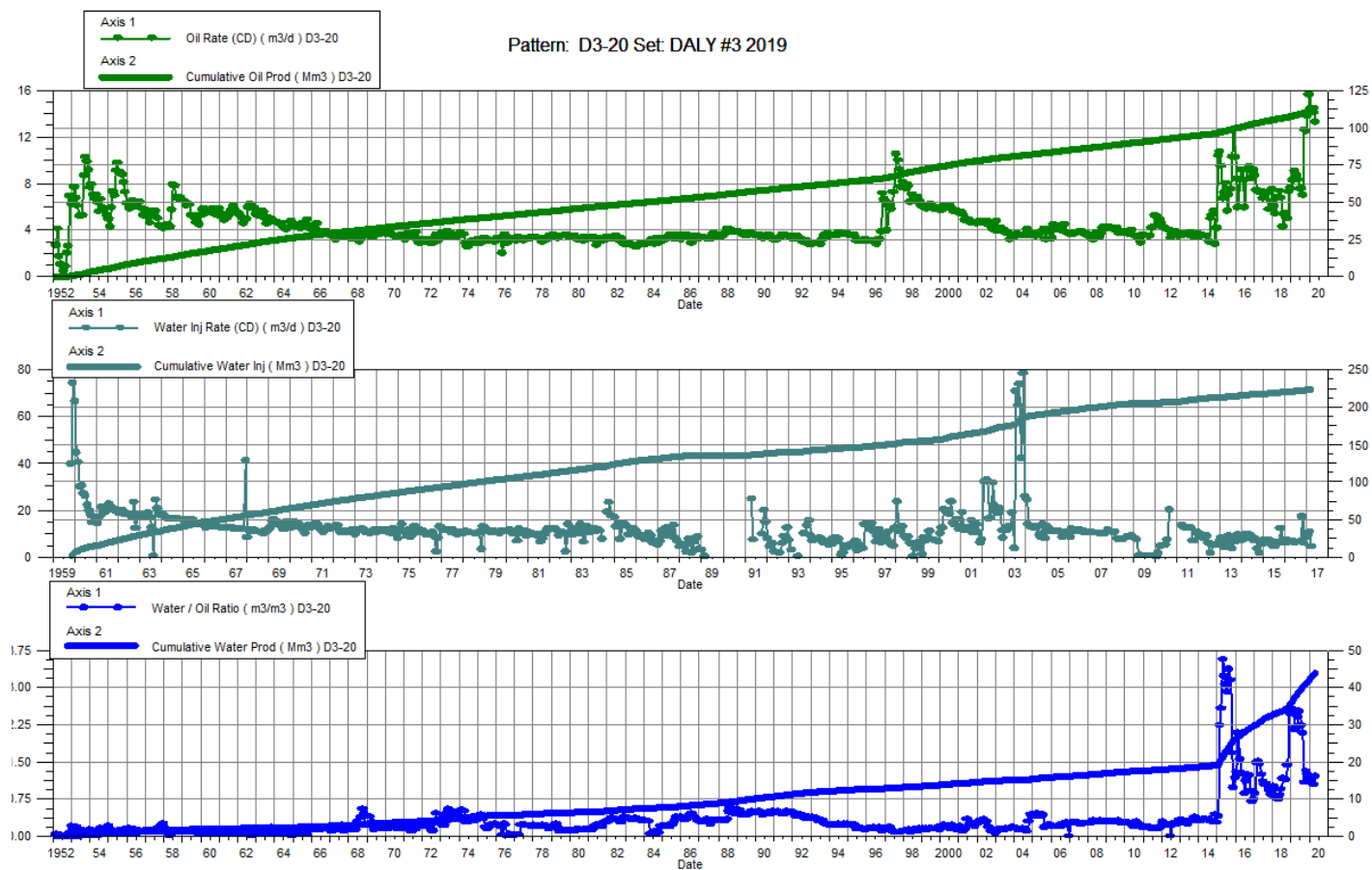
Date	Oil Rate (CD) m3/d	Cum Oil Prod Mm3	Water Rate (CD) m3/d	Cum Water Prod Mm3	Water Inj Rate (CD) m3/d	Cum Water Inj Mm3	Water Oil Ratio m3/m3	Voidage Replacement Ratio	Cum Voidage Replacement Ratio	Water Inj Pressure kPa
1-31-2019	10.13	114.32	11.02	98.10		170.05	1.09		0.79	2,180.00
2-28-2019	9.99	114.60	10.95	98.40		170.05	1.10		0.79	2,180.00
3-31-2019	11.31	114.95	10.49	98.73		170.05	0.93		0.79	2,180.00
4-30-2019	10.97	115.28	10.45	99.04		170.05	0.95		0.79	2,180.00
5-31-2019	10.51	115.61	10.92	99.38		170.05	1.04		0.78	2,180.00
6-30-2019	10.99	115.94	11.97	99.74		170.05	1.09		0.78	2,180.00
7-31-2019	9.60	116.23	9.28	100.03		170.05	0.97		0.78	2,180.00
8-31-2019	10.08	116.55	10.01	100.34		170.05	0.99		0.78	2,180.00
9-30-2019	3.65	116.66	13.06	100.73		170.05	3.58		0.77	2,180.00
10-31-2019	3.26	116.76	12.17	101.11		170.05	3.73		0.77	2,180.00
11-30-2019	3.40	116.86	12.40	101.48		170.05	3.65		0.77	2,180.00
12-31-2019	4.26	116.99	10.65	101.81		170.05	2.50		0.77	2,180.00



Daly Unit No. 3

Pattern P-20 - 00/02-11-010-28W1/00

Date	Oil Rate (CD) m3/d	Cum Oil Prod Mm3	Water Rate (CD) m3/d	Cum Water Prod Mm3	Water Inj Rate (CD) m3/d	Cum Water Inj Mm3	Water Oil Ratio m3/m3	Voidage Replacement Ratio	Cum Voidage Replacement Ratio	Water Inj Pressure kPa
1-31-2019	8.30	107.99	20.99	36.04		224.39	2.53		1.54	344.74
2-28-2019	8.36	108.23	21.28	36.63		224.39	2.54		1.53	344.74
3-31-2019	9.10	108.51	19.44	37.24		224.39	2.14		1.52	344.74
4-30-2019	8.74	108.77	19.14	37.81		224.39	2.19		1.51	344.74
5-31-2019	8.37	109.03	19.96	38.43		224.39	2.38		1.50	344.74
6-30-2019	7.59	109.26	19.07	39.00		224.39	2.51		1.49	344.74
7-31-2019	7.61	109.50	16.95	39.53		224.39	2.23		1.49	344.74
8-31-2019	7.01	109.71	14.56	39.98		224.39	2.08		1.48	344.74
9-30-2019	12.65	110.09	13.74	40.39		224.39	1.09		1.47	344.74
10-31-2019	12.50	110.48	16.42	40.90		224.39	1.31		1.46	344.74
11-30-2019	13.77	110.89	17.30	41.42		224.39	1.26		1.45	344.74
12-31-2019	15.63	111.38	18.28	41.99		224.39	1.17		1.44	344.74

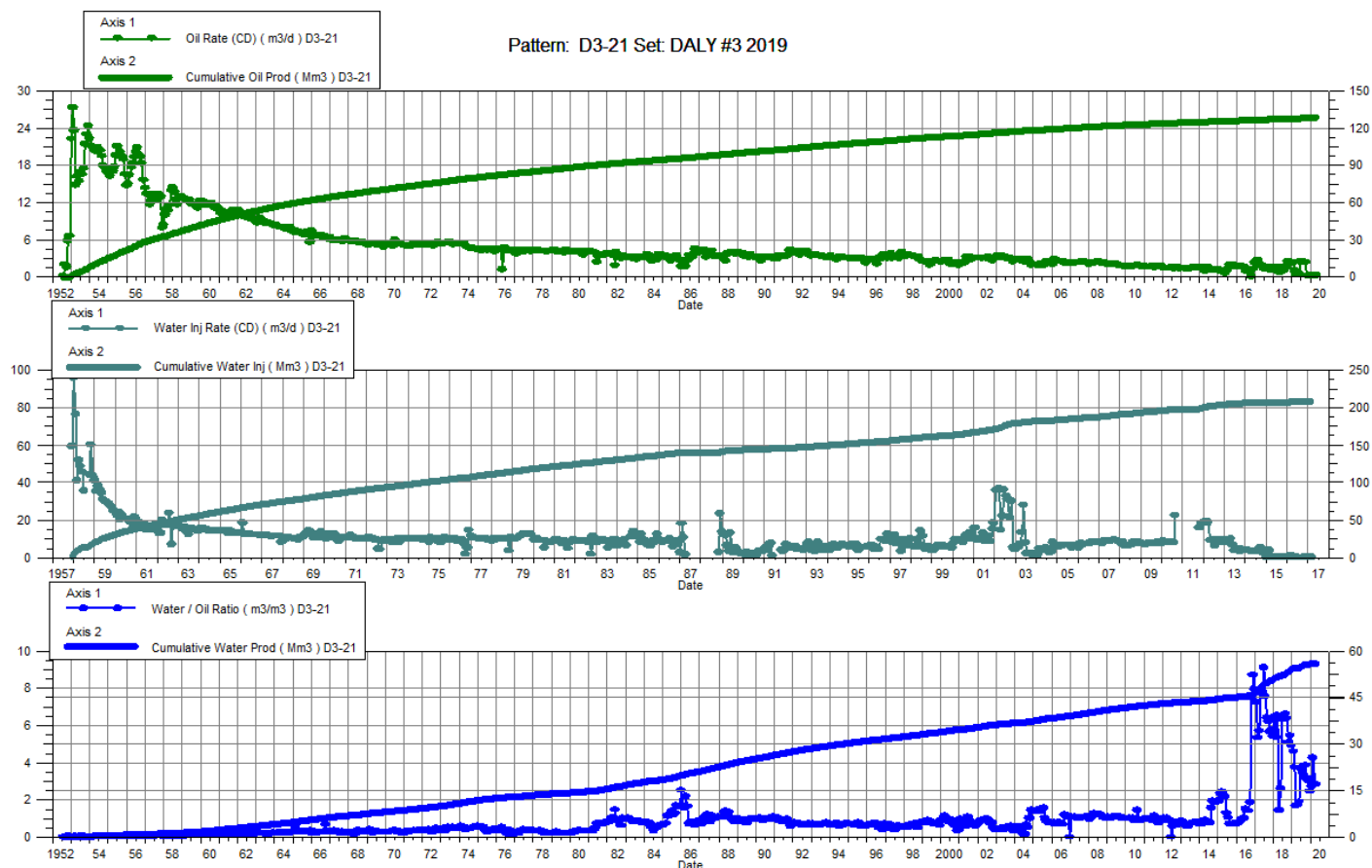


Daly Unit No. 3

Pattern P-21 - 00/04-12-010-28W1/00

P-21 – B0/05-12-010-28W1/00

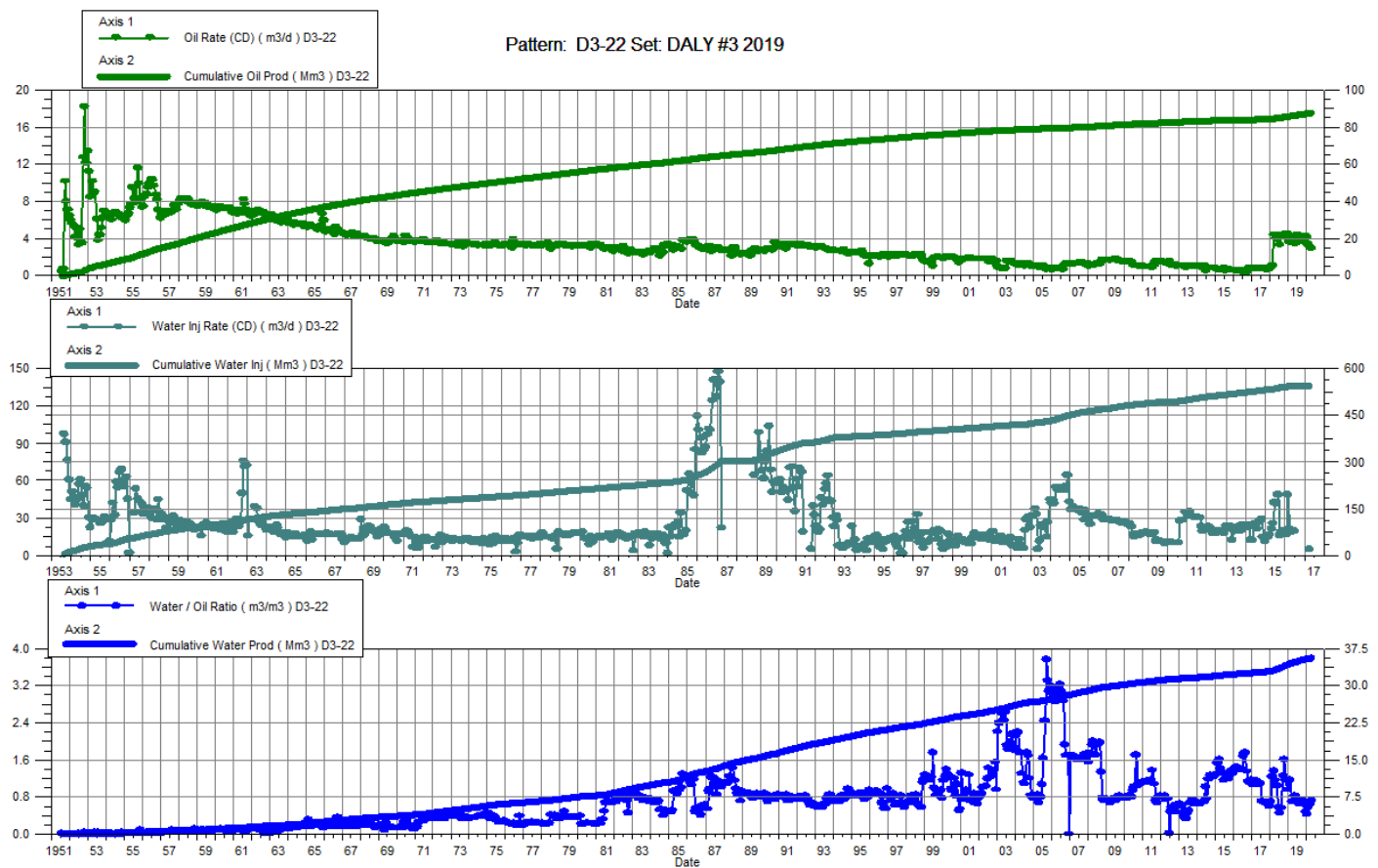
Date	Oil Rate (CD) m3/d	Cum Oil Prod Mm3	Water Rate (CD) m3/d	Cum Water Prod Mm3	Water Inj Rate (CD) m3/d	Cum Water Inj Mm3	Water Oil Ratio m3/m3	Voidage Replacement Ratio	Cum Voidage Replacement Ratio	Water Inj Pressure kPa	Water Inj Pressure kPa
1-31-2019	2.38	128.11	10.92	54.30		208.34	4.58		1.13	3,600.00	1,400.00
2-28-2019	1.07	128.14	4.01	54.41		208.34	3.73		1.13	3,600.00	1,400.00
3-31-2019	0.55	128.16	0.94	54.44		208.34	1.70		1.13	3,600.00	1,400.00
4-30-2019	0.51	128.18	0.88	54.46		208.34	1.73		1.13	3,600.00	1,400.00
5-31-2019	0.51	128.19	0.97	54.49		208.34	1.90		1.13	3,600.00	1,400.00
6-30-2019	2.52	128.27	9.36	54.77		208.34	3.72		1.12	3,600.00	1,400.00
7-31-2019	2.55	128.35	8.76	55.05		208.34	3.44		1.12	3,600.00	1,400.00
8-31-2019	2.43	128.42	7.73	55.29		208.34	3.18		1.12	3,600.00	1,400.00
9-30-2019	2.42	128.49	9.35	55.57		208.34	3.86		1.12	3,600.00	1,400.00
10-31-2019	0.28	128.50	0.88	55.59		208.34	3.19		1.12	3,600.00	1,400.00
11-30-2019	0.28	128.51	0.86	55.62		208.34	3.04		1.12	3,600.00	1,400.00
12-31-2019	0.39	128.52	0.97	55.65		208.34	2.47		1.12	3,600.00	1,400.00



Daly Unit No. 3

Pattern P-22 - 00/02-12-010-28W1/00

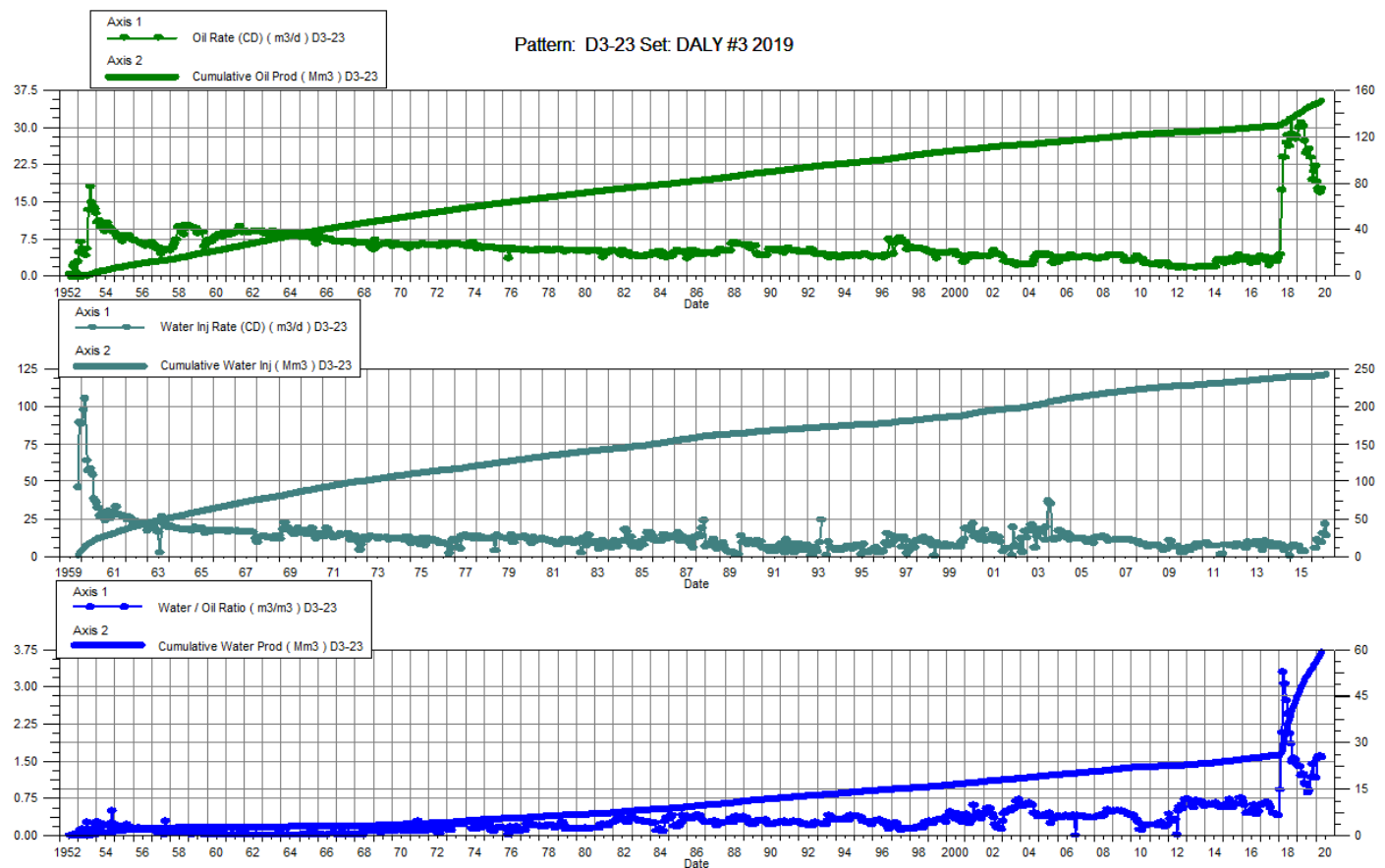
Date	Oil Rate (CD) m3/d	Cum Oil Prod Mm3	Water Rate (CD) m3/d	Cum Water Prod Mm3	Water Inj Rate (CD) m3/d	Cum Water Inj Mm3	Water Oil Ratio m3/m3	Voidage Replacement Ratio	Cum Voidage Replacement Ratio	Water Inj Pressure kPa
1-31-2019	3.90	85.98	4.48	34.29		546.54	1.15		4.48	450.00
2-28-2019	3.59	86.08	4.17	34.41		546.54	1.16		4.47	450.00
3-31-2019	4.01	86.21	2.79	34.50		546.54	0.70		4.47	450.00
4-30-2019	3.71	86.32	2.59	34.57		546.54	0.70		4.46	450.00
5-31-2019	3.44	86.43	2.82	34.66		546.54	0.82		4.45	450.00
6-30-2019	4.42	86.56	3.43	34.76		546.54	0.78		4.44	450.00
7-31-2019	4.40	86.69	2.96	34.86		546.54	0.67		4.44	450.00
8-31-2019	4.17	86.82	2.66	34.94		546.54	0.64		4.43	450.00
9-30-2019	4.01	86.94	2.84	35.02		546.54	0.71		4.42	450.00
10-31-2019	3.72	87.06	2.59	35.10		546.54	0.70		4.41	450.00
11-30-2019	3.65	87.17	2.60	35.18		546.54	0.71		4.41	450.00
12-31-2019	4.32	87.30	2.05	35.25		546.54	0.48		4.40	413.23



Daly Unit No. 3

Pattern P-23 - 00/16-02-010-28W1/00

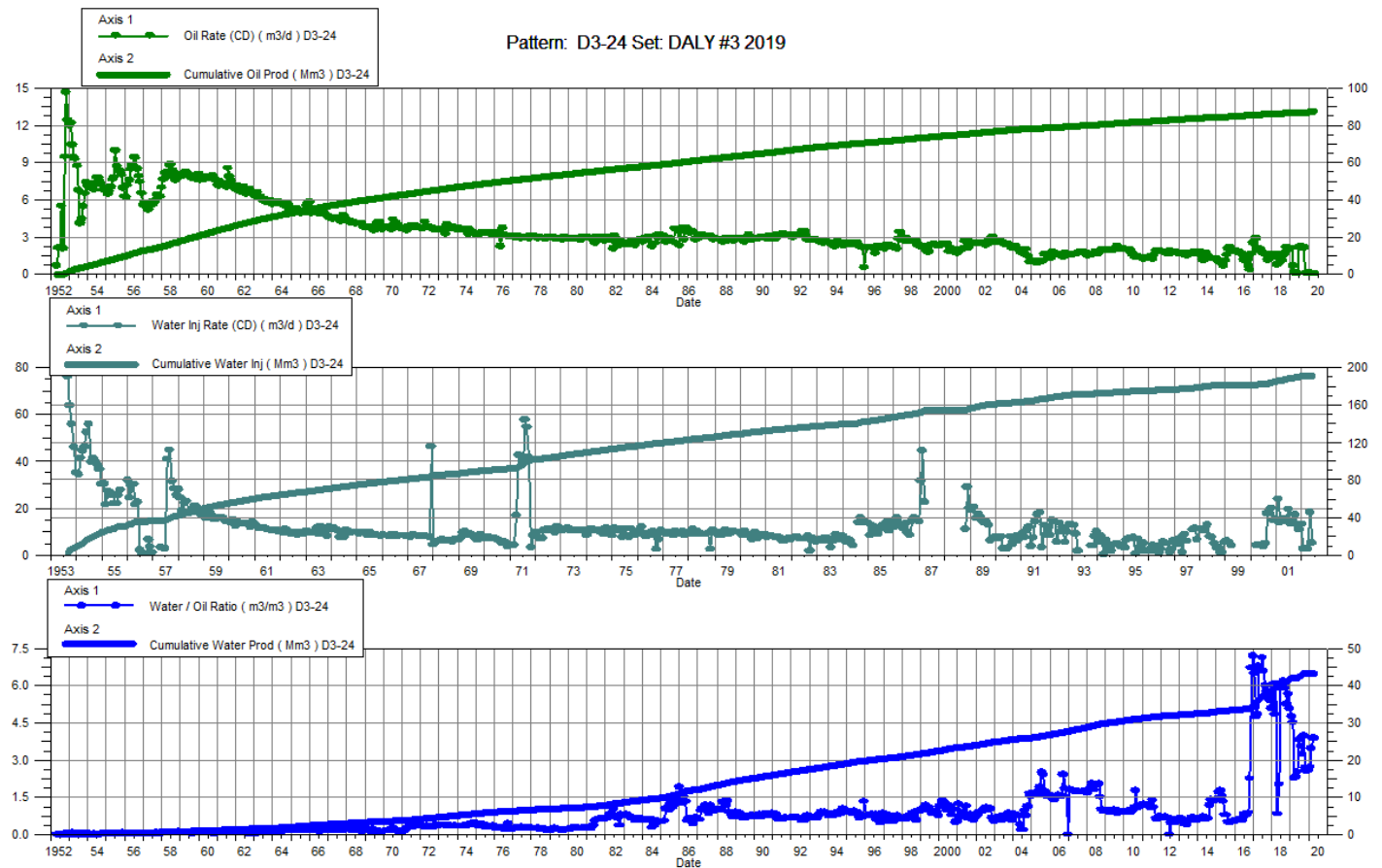
Date	Oil Rate (CD) m3/d	Cum Oil Prod Mm3	Water Rate (CD) m3/d	Cum Water Prod Mm3	Water Inj Rate (CD) m3/d	Cum Water Inj Mm3	Water Oil Ratio m3/m3	Voidage Replacement Ratio	Cum Voidage Replacement Ratio	Water Inj Pressure kPa
1-31-2019	29.91	139.88	41.34	45.93		244.38	1.38		1.30	2,600.00
2-28-2019	30.09	140.73	41.88	47.10		244.38	1.39		1.28	2,600.00
3-31-2019	31.03	141.69	37.57	48.27		244.38	1.21		1.27	2,600.00
4-30-2019	30.18	142.59	37.56	49.39		244.38	1.24		1.26	1,021.32
5-31-2019	27.25	143.44	28.95	50.29		244.38	1.06		1.24	344.74
6-30-2019	24.83	144.18	25.54	51.06		244.38	1.03		1.23	344.74
7-31-2019	25.47	144.97	21.73	51.73		244.38	0.85		1.23	344.74
8-31-2019	25.81	145.77	23.48	52.46		244.38	0.91		1.22	344.74
9-30-2019	23.94	146.49	28.10	53.30		244.38	1.17		1.21	344.74
10-31-2019	19.41	147.09	27.84	54.16		244.38	1.43		1.20	344.74
11-30-2019	21.14	147.73	25.00	54.91		244.38	1.18		1.19	1,011.23
12-31-2019	22.27	148.42	25.85	55.72		244.38	1.16		1.18	1,034.21



Daly Unit No. 3

Pattern P-24 - 00/14-01-010-28W1/00

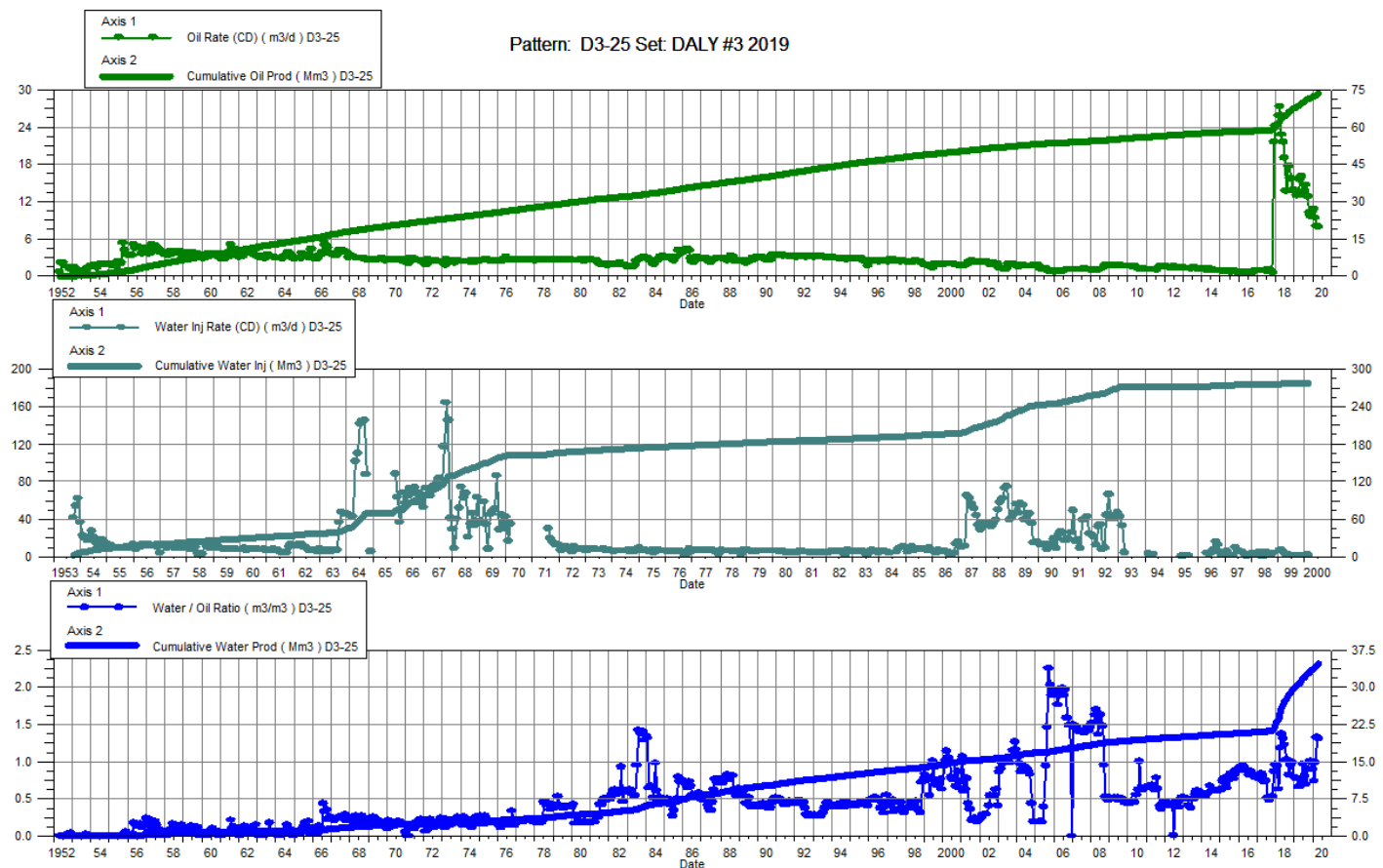
Date	Oil Rate (CD) m3/d	Cum Oil Prod Mm3	Water Rate (CD) m3/d	Cum Water Prod Mm3	Water Inj Rate (CD) m3/d	Cum Water Inj Mm3	Water Oil Ratio m3/m3	Voidage Replacement Ratio	Cum Voidage Replacement Ratio	Water Inj Pressure kPa
1-31-2019	2.14	87.02	10.17	41.96		192.02	4.75		1.47	276
2-28-2019	0.72	87.04	3.24	42.05		192.02	4.49		1.47	291
3-31-2019	0.16	87.05	0.35	42.06		192.02	2.26		1.47	345
4-30-2019	0.14	87.05	0.33	42.07		192.02	2.33		1.47	345
5-31-2019	0.15	87.06	0.37	42.08		192.02	2.54		1.47	345
6-30-2019	2.26	87.13	8.61	42.34		192.02	3.82		1.46	345
7-31-2019	2.29	87.20	8.09	42.59		192.02	3.54		1.46	345
8-31-2019	2.21	87.27	7.12	42.81		192.02	3.22		1.46	345
9-30-2019	2.18	87.33	8.64	43.07		192.02	3.97		1.45	345
10-31-2019	0.14	87.34	0.38	43.09		192.02	2.68		1.45	345
11-30-2019	0.15	87.34	0.37	43.10		192.02	2.55		1.45	411
12-31-2019	0.15	87.34	0.40	43.11		192.02	2.58		1.45	414



Daly Unit No. 3

Pattern P-25 - 00/16-01-010-28W1/00

Date	Oil Rate (CD) m3/d	Cum Oil Prod Mm3	Water Rate (CD) m3/d	Cum Water Prod Mm3	Water Inj Rate (CD) m3/d	Cum Water Inj Mm3	Water Oil Ratio m3/m3	Voidage Replacement Ratio	Cum Voidage Replacement Ratio	Water Inj Pressure kPa
1-31-2019	13.81	67.88	10.59	30.01		277.99	0.77		2.80	137.89
2-28-2019	13.01	68.25	10.07	30.29		277.99	0.77		2.78	137.89
3-31-2019	13.11	68.65	8.64	30.56		277.99	0.66		2.77	137.89
4-30-2019	15.57	69.12	10.38	30.87		277.99	0.67		2.74	137.89
5-31-2019	16.09	69.62	11.84	31.23		277.99	0.74		2.72	137.89
6-30-2019	13.12	70.01	12.66	31.61		277.99	0.96		2.70	137.89
7-31-2019	13.70	70.44	11.08	31.96		277.99	0.81		2.68	137.89
8-31-2019	14.74	70.89	10.20	32.27		277.99	0.69		2.66	137.89
9-30-2019	12.84	71.28	11.58	32.62		277.99	0.90		2.64	137.89
10-31-2019	10.23	71.60	10.16	32.94		277.99	0.99		2.63	137.89
11-30-2019	9.70	71.89	9.75	33.23		277.99	1.00		2.61	137.89
12-31-2019	10.52	72.21	9.46	33.52		277.99	0.90		2.60	137.89



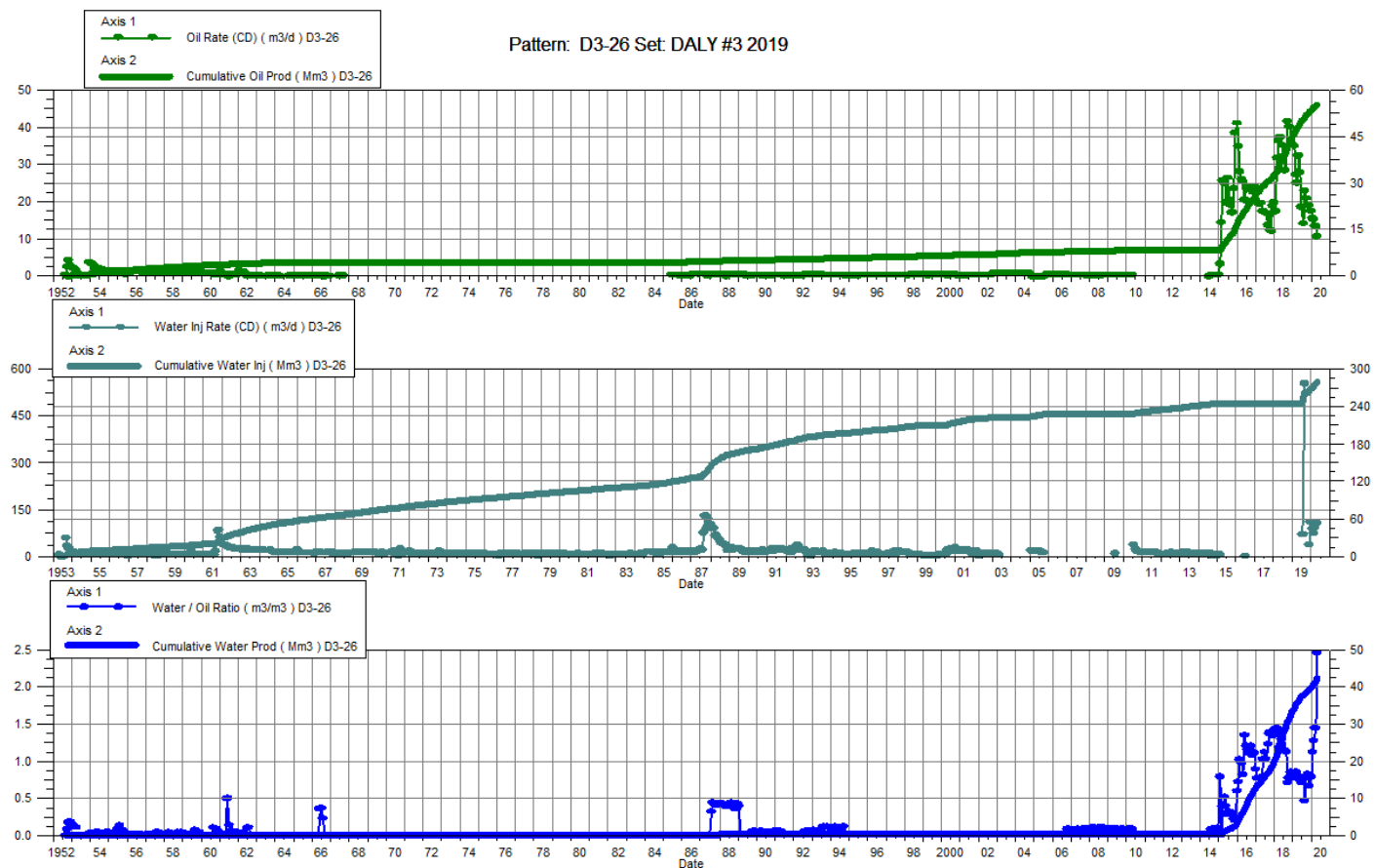
Daly Unit No. 3

Pattern P-26 - 03/10-01-010-28W1/00

P-26 - 00/10-01-010-28W1/00

P-26 - 00/12-01-010-28W1/00

Date	Oil Rate (CD) m3/d	Cum Oil Prod Mm3	Water Rate (CD) m3/d	Cum Water Prod Mm3	Water Inj Rate (CD) m3/d	Cum Water Inj Mm3	Water Oil Ratio m3/m3	Voidage Replacement Ratio	Cum Voidage Replacement Ratio	Water Inj Pressure kPa	Water Inj Pressure kPa	Water Inj Pressure kPa
1-31-2019	35.00	46.09	26.77	34.11		245.13	0.76		3.02	-	689	5,800
2-28-2019	27.28	46.85	23.13	34.76		245.13	0.85		2.97	-	675	5,800
3-31-2019	25.02	47.63	21.25	35.42		245.13	0.85		2.92	-	621	5,800
4-30-2019	32.42	48.60	25.85	36.19		245.13	0.80		2.86	-	676	5,800
5-31-2019	27.82	49.46	20.81	36.84		245.13	0.75		2.81	-	689	5,800
6-30-2019	18.57	50.02	13.10	37.23		245.13	0.71		2.78	3,033	689	5,800
7-31-2019	14.24	50.46	11.16	37.58	68.39	247.25	0.78	2.66	2.78	6,597	689	5,800
8-31-2019	22.93	51.17	10.76	37.91	554.27	264.43	0.47	16.24	2.94	7,300	689	5,800
9-30-2019	20.95	51.80	16.19	38.40		264.43	0.77		2.90	7,300	689	5,800
10-31-2019	19.01	52.39	15.69	38.88		264.43	0.83		2.87	7,300	689	5,800
11-30-2019	19.01	52.96	12.71	39.26	36.45	265.52	0.67	1.14	2.85	6,535	623	5,800
12-31-2019	17.55	53.50	13.84	39.69	108.47	268.88	0.79	3.42	2.85	6,936	621	5,800



Daly Unit No. 3

Pattern P-27 -

Date	Oil Rate (CD) m3/d	Cum Oil Prod Mm3	Water Rate (CD) m3/d	Cum Water Prod Mm3	Water Inj Rate (CD) m3/d	Cum Water Inj Mm3	Water Oil Ratio m3/m3	Voidage Replacement Ratio	Cum Voidage Replacement Ratio	Water Inj Pressure kPa
1-31-2019	47.74	85.36	42.04	39.92		0.00	0.88		0.00	-
2-28-2019	49.50	86.74	44.92	41.18		0.00	0.91		0.00	-
3-31-2019	49.50	88.28	41.56	42.46		0.00	0.84		0.00	-
4-30-2019	47.06	89.69	41.02	43.69		0.00	0.87		0.00	-
5-31-2019	44.06	91.05	41.80	44.99		0.00	0.95		0.00	-
6-30-2019	39.56	92.24	42.96	46.28		0.00	1.09		0.00	-
7-31-2019	34.53	93.31	37.93	47.45		0.00	1.10		0.00	-
8-31-2019	36.83	94.45	35.02	48.54		0.00	0.95		0.00	-
9-30-2019	29.51	95.34	30.63	49.46		0.00	1.04		0.00	-
10-31-2019	26.67	96.16	27.97	50.33		0.00	1.05		0.00	-
11-30-2019	27.53	96.99	24.40	51.06		0.00	0.89		0.00	-
12-31-2019	29.67	97.91	25.54	51.85		0.00	0.86		0.00	-

