

**East Manson Unit No. 2
Waterflood EOR Project**

2017 Annual Report

**February 27, 2018
Crescent Point Energy Corporation**

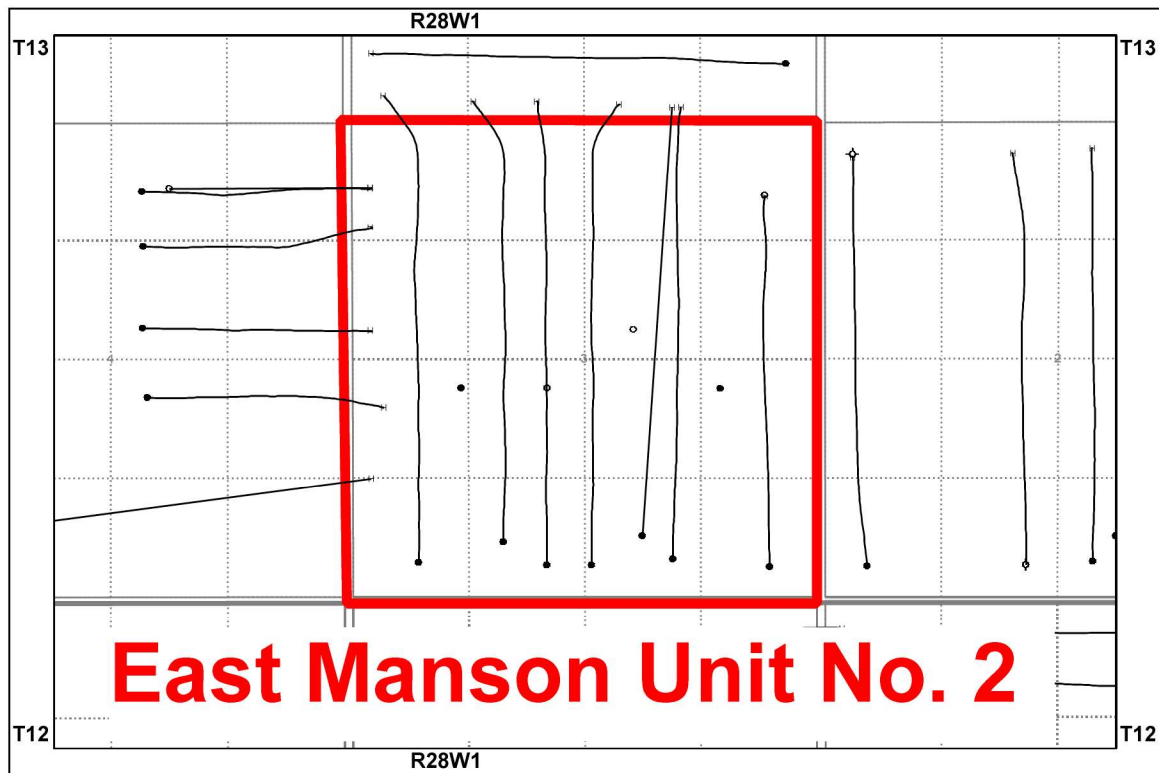
Table of Contents

<u>Section</u>	<u>Page</u>
Introduction	2
Production History	2
Waterflood History	4
Waterflood Operating Strategy	4
Water Source and Quality	4
Injection Wellhead Pressures	5
Reservoir Pressure	5
Well Servicing	5
Voidage Replacement	5
Waterflood Performance	5
List of Appendices	6
Appendix A: Well Name and Status	
Appendix B: Average Monthly Injection Pressures	
Appendix C: Injector Pattern Production/Injection Rates, Cumulative VRRs, Plots and Tables	

Introduction

East Manson Unit No. 2 (EM2) was approved on October 9, 2015. EM2 includes 7 horizontal producing wells, 1 producing vertical well and 1 shut-in vertical well located in 03-013-28W1 shown in the figure below.

Figure 1: East Manson Unit No. 2 Area Outline



Crescent Point Energy (CPG), in accordance with Section 73 of the Manitoba Drilling and Production Regulation, hereby submits the 2017 Annual Progress Report for EM2.

Production History

The first well that was drilled was 00/01-03-013-28W1/0 and was placed on production in January 2012. Development continued until February 2014, when the last 3 horizontals were placed on production. Production peaked in March 2014 at 72.7 m³/d (457.0 bbl/d) or 9.1 m³/d (57.1 bbl/d) per well with a 54% watercut. Production in December 2017 was 44.5 m³/d (280.1 bbl/d) with a 31.3% watercut. Injector conversions and facility work started in December 2015 and water injection commenced in January 2016. The oil production rate, injection rate, and WOR during each month for the whole project are presented in Appendix C. The rate and WOR are plotted in Figure 2. The drop in the total fluid level at the end of 2017 is due to a workover that was done on the high water producer, 00/01-03-013-28W1/0.

Figure 2: East Manson Unit No. 2 Production

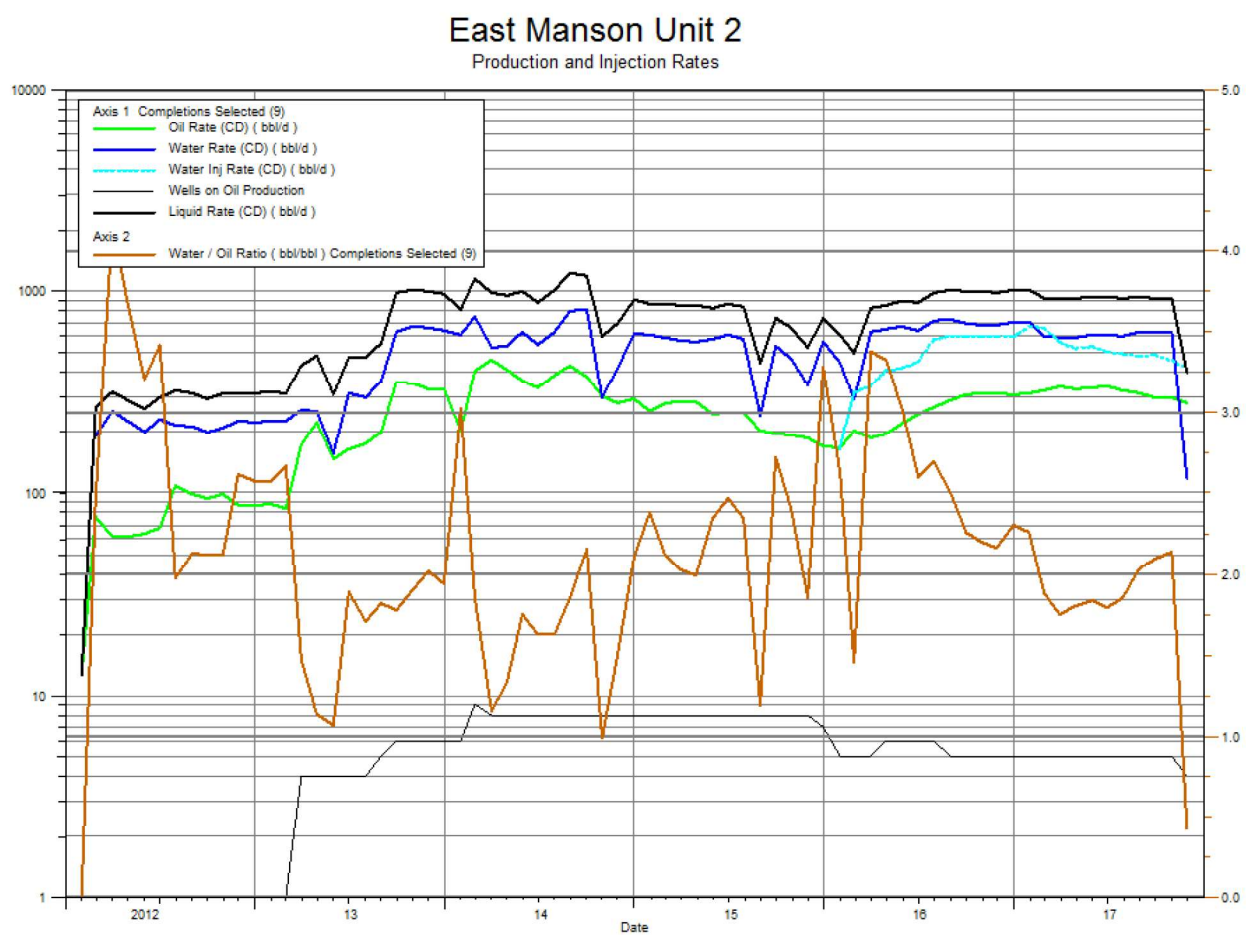
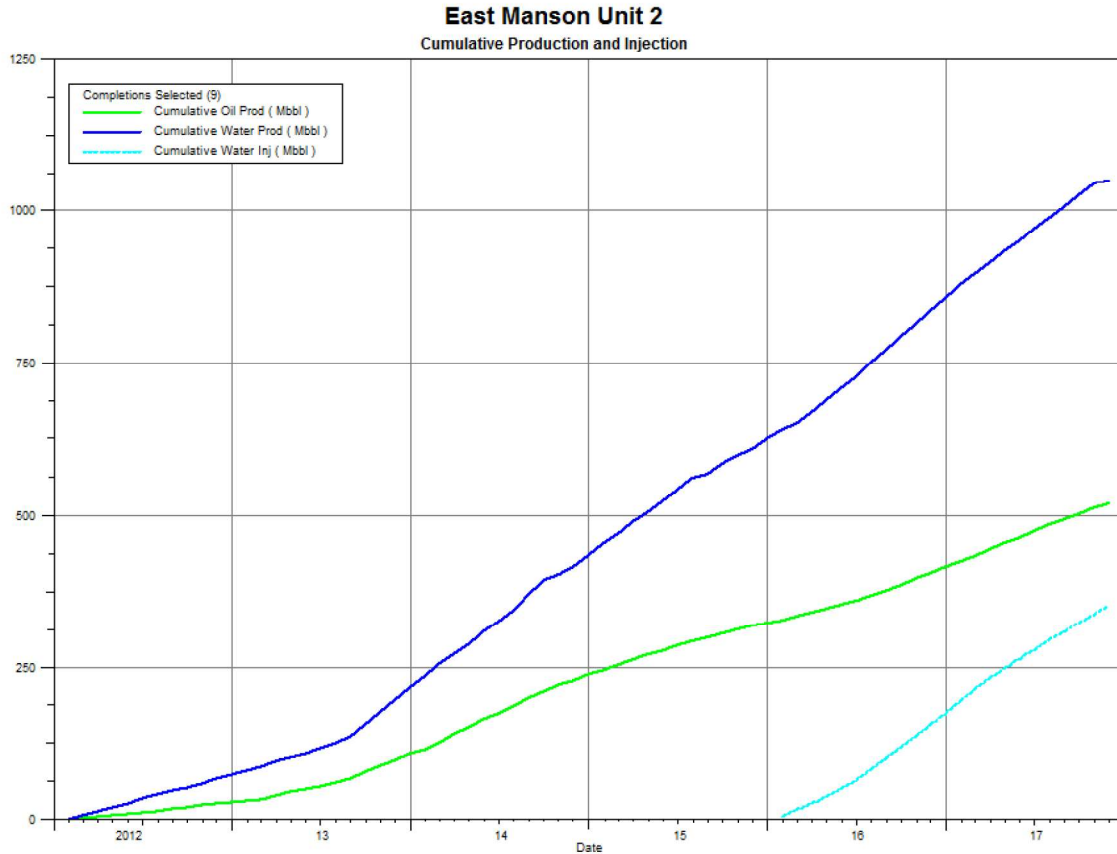


Figure 3 shows the cumulative production for EM2 to the end of November 2017 is 82.8 e³m³ (520.9 mbbl) of oil and 167.0 e³m³ (1050.6 mbbl) of water, which represents a cumulative recovery factor to date of 8.9%. The cumulative volume of oil, water produced, and fluid injected for the whole project are presented in Appendix C.

Figure 3: East Manson Unit No. 2 Cumulative Production and Water Injected



Waterflood History

As of December 2016, the Unit has 3 active horizontal injection wells at 00/02-03-013-28W1/0, 03/02-03-013-28W1/0 and 00/03-03-013-28W1/0. Water injection started in January 2016. A summary of each injector is presented in Appendix C.

Waterflood Operating Strategy

Water Source and Quality

The injection water for EM2 will be produced water from the 16-4-13-28W1 battery, where it is treated with scale inhibitor, filtered to 5.0 micron and distributed to the injection system.

Injection Wellhead Pressures

The maximum allowable wellhead injection pressure in EM2 is 5700 kPa. The monthly wellhead injection pressures for each injection well are summarized in Appendix B, showing pressures since January 2017.

Reservoir Pressure

Table 1: East Manson Unit 2 Reservoir Pressures

UWI	Date	Pressure (kPa)
00/04-03-013-28W1/0	8/15/2013	4,628
02/03-03-013-28W1/0	1/17/2014	2,849
02/02-03-013-28W1/0	2/10/2014	3,389

Well Servicing

Table 2: East Manson Unit 2 2017 Well Servicing

UWI	Date	Well Service
100/02-03-013-28W1/00	11/19/2017	Acid Job
100/01-03-013-28W1/00	11/20/2017	Cleanout

Voidage Replacement

Cumulative voidage for East Manson Unit 2 was 0.225 in November 2017 and continues to climb steadily with a monthly voidage of about 1.05. Calculations, plots and tables of the Voidage Replacement Ratio on a monthly and cumulative basis for each the whole project area is presented in Appendix C.

Waterflood Performance

The original oil-in-place (OOIP) of $931.4 \text{ e}^3\text{m}^3$ with cumulative oil recovered to date of $82.8 \text{ e}^3\text{m}^3$ results in a recovery factor of 8.9%. At this time, the ultimate recovery factor has not yet been determined due to the continual increase in production.

The 103/02-03-013-28W1/0 and 100/03-03-013-28W1/0 horizontal wells were both converted to injectors in December 2015. Injection rates are currently at approximately 25m^3 and 35m^3 respectively. As a result, the offsetting horizontal wells at 102/03-03-013-28W1/0 and 100/04-03-013-28W1/0, and the vertical well at 00/05-03-013-28W1/0, have all shown positive oil responses since the start on injection. The 102/02-03-013-28W1/0 horizontal well was converted in January 2016 and is currently injecting 0m^3 of water. As a result, production in the 102/02-03-013-28W1/0 has come down.

Please contact Lauren [REDACTED] at 403-513-1202, by email at ltse@cpsenergy.com or at Suite 2000, 585-8th Ave SW, Calgary, Alberta, T2P 1G1 for any other questions or clarification.

Crescent Point Energy Corporation

Lauren [REDACTED]
Senior Reservoir Engineering Technologist

List of Appendices

Appendix A: Well Name and Status

Appendix B: Average Monthly Injection Pressures

Appendix C: Injector Pattern Production/Injection Rates, Cumulative VRRs,
Plots and Tables

Appendix A

UWI	Surface Location	Well Status
00/01-03-013-28W1/0	00/16-03-013-28W1/0	Producing
00/02-03-013-28W1/0	00/02-10-013-28W1/0	Injection
02/02-03-013-28W1/0	02/02-10-013-28W1/0	Producing
03/02-03-013-28W1/0	03/02-10-013-28W1/0	Injection
00/03-03-013-28W1/0	00/03-10-013-28W1/0	Injection
02/03-03-013-28W1/0	02/03-10-013-28W1/0	Producing
00/04-03-013-28W1/0	00/04-10-013-28W1/0	Producing
00/05-03-013-28W1/0	00/05-03-013-28W1/0	Producing
00/08-03-013-28W1/0	00/08-03-013-28W1/0	Producing

Appendix B

Average Monthly Injection Pressures

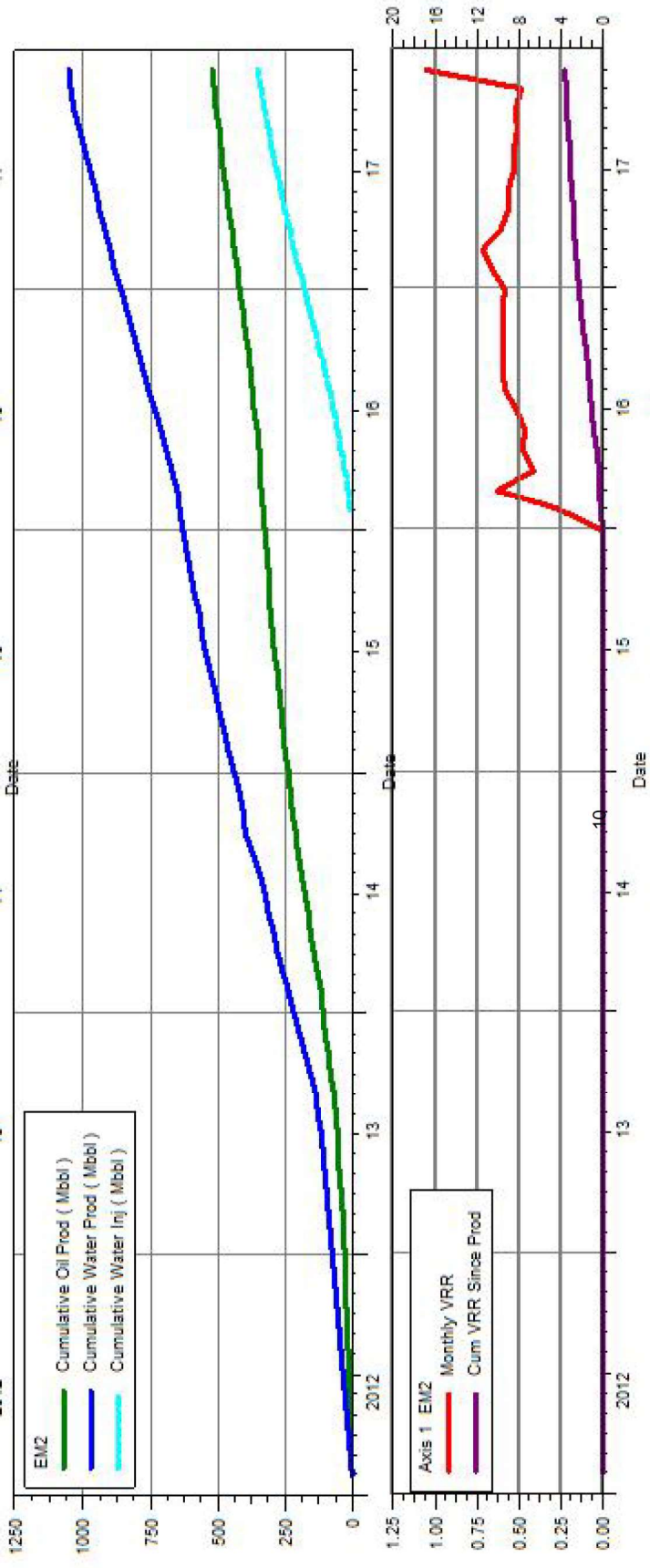
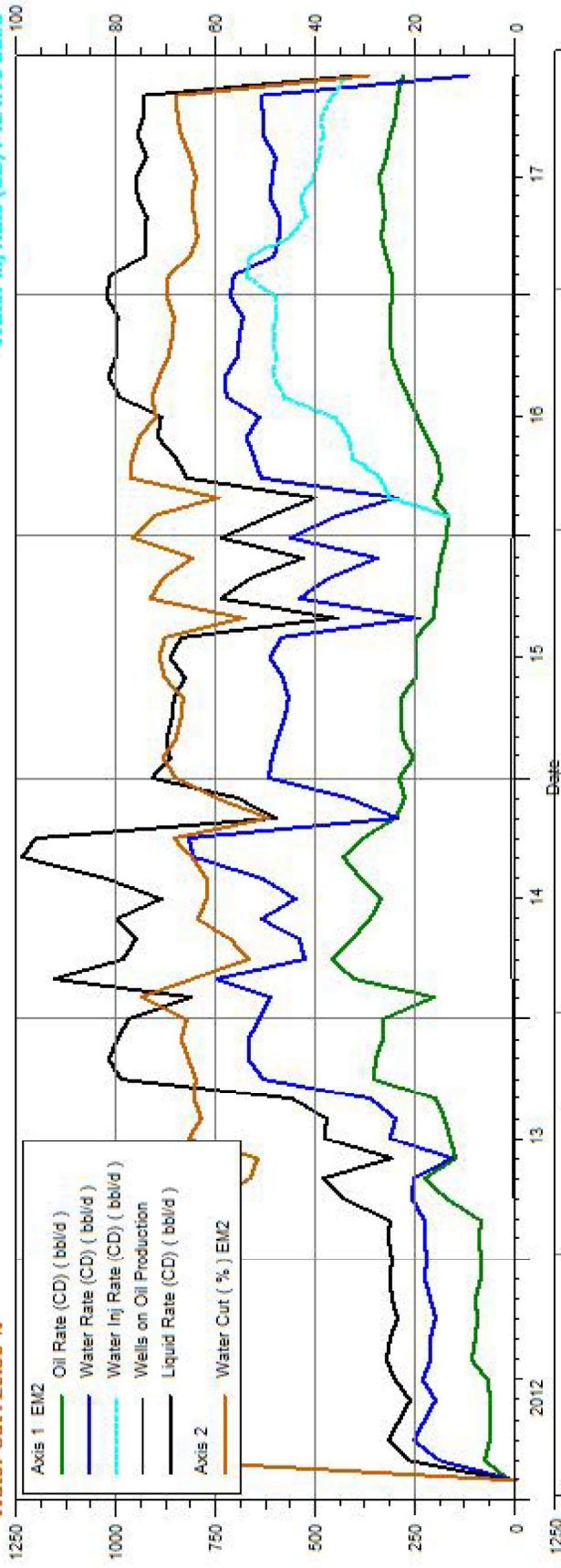
Month	Injection Pressure		
	00/02-03-013-28W1/0	03/02-03-013-28W1/0	00/03-03-013-28W1/0
Jan-17	4,468.24	3,396.83	1,815.10
Feb-17	4,640.41	3,795.07	2,957.60
Mar-17	4,573.66	3,771.87	3,470.95
Apr-17	4,417.69	3,840.14	3,351.54
May-17	4,392.09	3,994.51	3,521.44
Jun-17	4,559.96	4,047.68	3,637.44
Jul-17	4,397.92	4,186.89	3,791.67
Aug-17	4,641.72	4,212.02	3,851.94
Sep-17	4,588.22	4,397.93	4,389.20
Oct-17	4,390.40	4,324.79	4,285.20
Nov-17	4,369.20	4,296.35	4,263.71
Dec-17	4,405.08	4,338.80	4,307.66

Appendix C
Rates and WRR
Plots and Tables

East Manson Unit 2

Water Cut : 29.59 %

Oil Rate (CD) : 280.90 bbl/d
Water Rate (CD) : 118.04 bbl/d
Water Inj Rate (CD) : 424.18 bbl/d



Date	Oil Rate (CD)	Water Rate (CD)	Water Inj Rate (CD)	Cum Oil Prod	Cum Water Prod	Cum Water Inj	Water Cut	Monthly VRR	Cum VRR Since Prod
	bbl/d	bbl/d	bbl/d	Mbbl	Mbbl	Mbbl	%		
1/31/2012	12.72	0		0.39	0	0	0	0	0
2/29/2012	77.3	190.56		2.64	5.53	0	71.14	0	0
3/31/2012	61.32	255.35		4.54	13.44	0	80.64	0	0
4/30/2012	61.87	227.44		6.39	20.27	0	78.61	0	0
5/31/2012	62.94	201.64		8.34	26.52	0	76.21	0	0
6/30/2012	67.47	230.73		10.37	33.44	0	77.37	0	0
7/31/2012	109.08	215.58		13.75	40.12	0	66.4	0	0
8/31/2012	99.91	213.33		16.85	46.73	0	68.1	0	0
9/30/2012	94.45	200.75		19.68	52.76	0	68	0	0
10/31/2012	99.52	211.46		22.77	59.31	0	68	0	0
11/30/2012	87.09	227.88		25.38	66.15	0	72.35	0	0
12/31/2012	87.08	223.92		28.08	73.09	0	72	0	0
1/31/2013	88.95	228.73		30.84	80.18	0	72	0	0
2/28/2013	85	227.04		33.22	86.54	0	72.76	0	0
3/31/2013	174.29	256.97		38.62	94.5	0	59.59	0	0
4/30/2013	225.76	255.68		45.39	102.17	0	53.11	0	0
5/31/2013	148.62	158.62		50	107.09	0	51.63	0	0
6/30/2013	164.94	311.68		54.95	116.44	0	65.39	0	0
7/31/2013	174.88	298.91		60.37	125.71	0	63.09	0	0
8/31/2013	199	361.58		66.54	136.92	0	64.5	0	0
9/30/2013	356.15	631.29		77.22	155.86	0	63.93	0	0
10/31/2013	351.58	669.22		88.12	176.6	0	65.56	0	0
11/30/2013	330.49	666.61		98.03	196.6	0	66.86	0	0
12/31/2013	329.71	639.04		108.26	216.41	0	65.97	0	0
1/31/2014	202.9	613.22		114.55	235.42	0	75.14	0	0
2/28/2014	404.73	749.68		125.88	256.41	0	64.94	0	0
3/31/2014	457.03	526.4		140.05	272.73	0	53.53	0	0
4/30/2014	407.77	543.19		152.28	289.02	0	57.12	0	0
5/31/2014	363.45	636.24		163.55	308.75	0	63.64	0	0
6/30/2014	336.44	549.31		173.64	325.23	0	62.02	0	0
7/31/2014	388.51	632.98		185.68	344.85	0	61.97	0	0
8/31/2014	434.06	803.96		199.14	369.77	0	64.94	0	0
9/30/2014	380.72	820.71		210.56	394.39	0	68.31	0	0
10/31/2014	301.83	297.12		219.92	403.6	0	49.61	0	0
11/30/2014	279.2	417.64		228.29	416.13	0	59.93	0	0
12/31/2014	292.42	618.75		237.36	435.31	0	67.91	0	0
1/31/2015	255.37	609.5		245.27	454.21	0	70.47	0	0
2/28/2015	280.28	594.12		253.12	470.84	0	67.95	0	0
3/31/2015	284.5	576.73		261.94	488.72	0	66.97	0	0
4/30/2015	285.91	569.37		270.52	505.8	0	66.57	0	0
5/31/2015	247.8	581.64		278.2	523.84	0	70.12	0	0
6/30/2015	248.8	614.74		285.66	542.28	0	71.19	0	0
7/31/2015	249.87	587.43		293.41	560.49	0	70.16	0	0
8/31/2015	204.24	242.56		299.74	568.01	0	54.29	0	0
9/30/2015	198.55	539.52		305.7	584.19	0	73.1	0	0
10/31/2015	195.04	469.26		311.74	598.74	0	70.64	0	0
11/30/2015	186.85	345.98		317.35	609.12	0	64.93	0	0
12/31/2015	171.79	564.56		322.68	626.62	0	76.67	0	0
1/31/2016	168.99	443.82	165.83	327.91	640.38	5.14	72.42	0.269	0.005

2/29/2016	203.07	295.71	315.81	333.8	648.96	14.3	59.29	0.627	0.014
3/31/2016	188.09	635.33	339.39	339.63	668.65	24.82	77.16	0.41	0.024
4/30/2016	196.98	655.86	408.92	345.54	688.33	37.09	76.9	0.477	0.036
5/31/2016	221.6	672.62	416.63	352.41	709.18	50	75.22	0.463	0.047
6/30/2016	247.11	641.96	450.48	359.83	728.44	63.52	72.21	0.503	0.058
7/31/2016	268.15	722.39	579.68	368.14	750.83	81.49	72.93	0.581	0.072
8/31/2016	290.16	727.65	603.96	377.13	773.39	100.21	71.49	0.589	0.086
9/30/2016	307.32	695.04	601.75	386.35	794.24	118.26	69.34	0.596	0.099
10/31/2016	312.77	689.22	604.39	396.05	815.6	137	68.79	0.598	0.112
11/30/2016	314.91	681.1	601.41	405.5	836.04	155.04	68.38	0.599	0.124
12/31/2016	309.48	712.7	601.71	415.09	858.13	173.69	69.72	0.584	0.135
1/31/2017	310.92	702.79	674.23	424.73	879.92	194.6	69.33	0.66	0.148
2/28/2017	322.73	606.88	665.17	433.77	896.91	213.22	65.28	0.709	0.159
3/31/2017	337.38	590.82	564.62	444.22	915.23	230.72	63.65	0.603	0.168
4/30/2017	328.79	592.98	524.8	454.09	933.02	246.47	64.33	0.564	0.176
5/31/2017	332.87	612.3	536.11	464.41	952	263.09	64.78	0.562	0.184
6/30/2017	340.19	608.85	505.74	474.61	970.26	278.26	64.15	0.528	0.191
7/31/2017	323.54	599.76	493.16	484.64	988.86	293.55	64.96	0.529	0.198
8/31/2017	311.26	633.55	481.33	494.29	1008.5	308.47	67.06	0.505	0.204
9/30/2017	300.15	630.49	487.61	503.3	1027.41	323.1	67.75	0.52	0.209
10/31/2017	296.35	634.64	457.05	512.48	1047.08	337.27	68.17	0.487	0.214
11/30/2017	280.9	118.04	424.18	520.91	1050.62	349.99	29.59	1.044	0.221