

TORC OIL & GAS LTD.

EAST MANSON UNIT #3

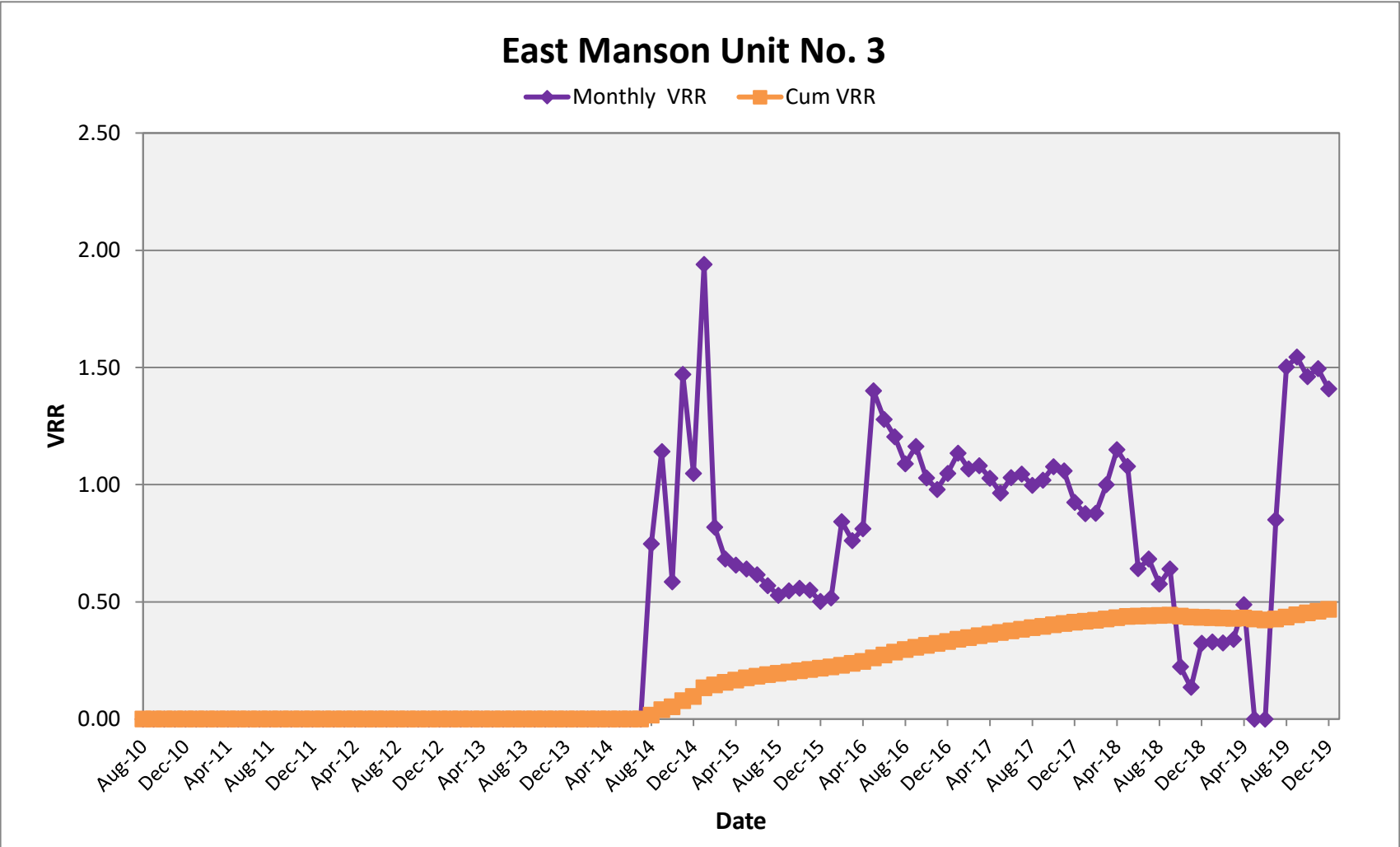
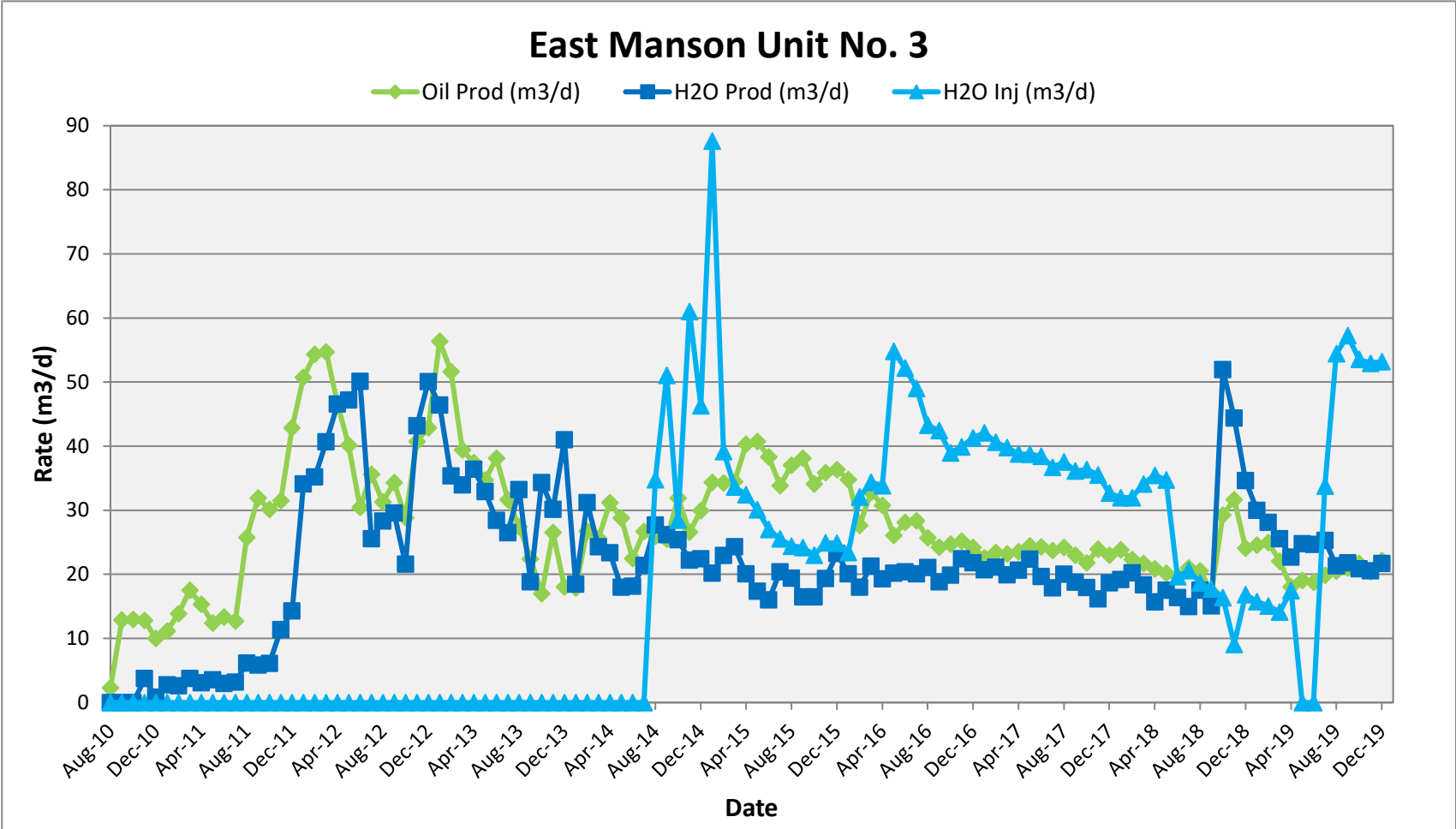
ENHANCED OIL RECOVERY (EOR) ANNUAL REPORT

Discussion

The existing waterflood within East Manson Unit #3 had another good year of performance. Entering its fifth year since inception, the waterflood has been successful in arresting decline and providing sufficient pressure maintenance to the reservoir.

In 2019, TORC executed 2 injection conversions within EMU3. These conversions were completed in August 2019 and the results to date have been favorable. Production in the unit has grown by approximately 4 % as a result of the conversions.

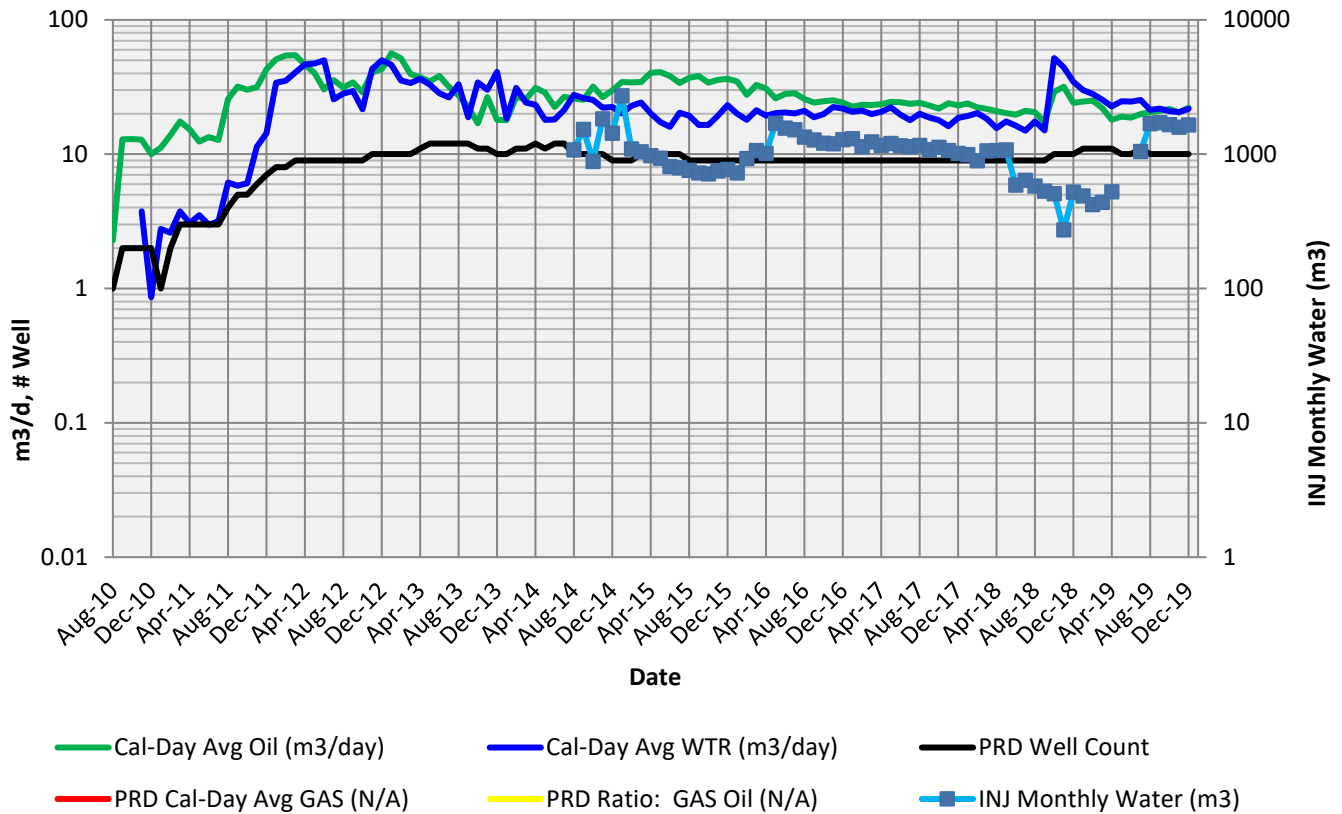
	Date	Oil Prod (m3/d)	Gas Prod (e3m3/d)	H2O Prod (m3/d)	H2O Inj (m3/d)	Monthly VRR	Cum VRR	Cum PRD Oil (m3)	Cum PRD Gas (e3m3)	Cum PRD Water (m3)	Cum INJ Water (m3)
EMU No. 3	Dec-2019	22	-	22	53	1.41	0.468	94,250	-	75,646	67,396



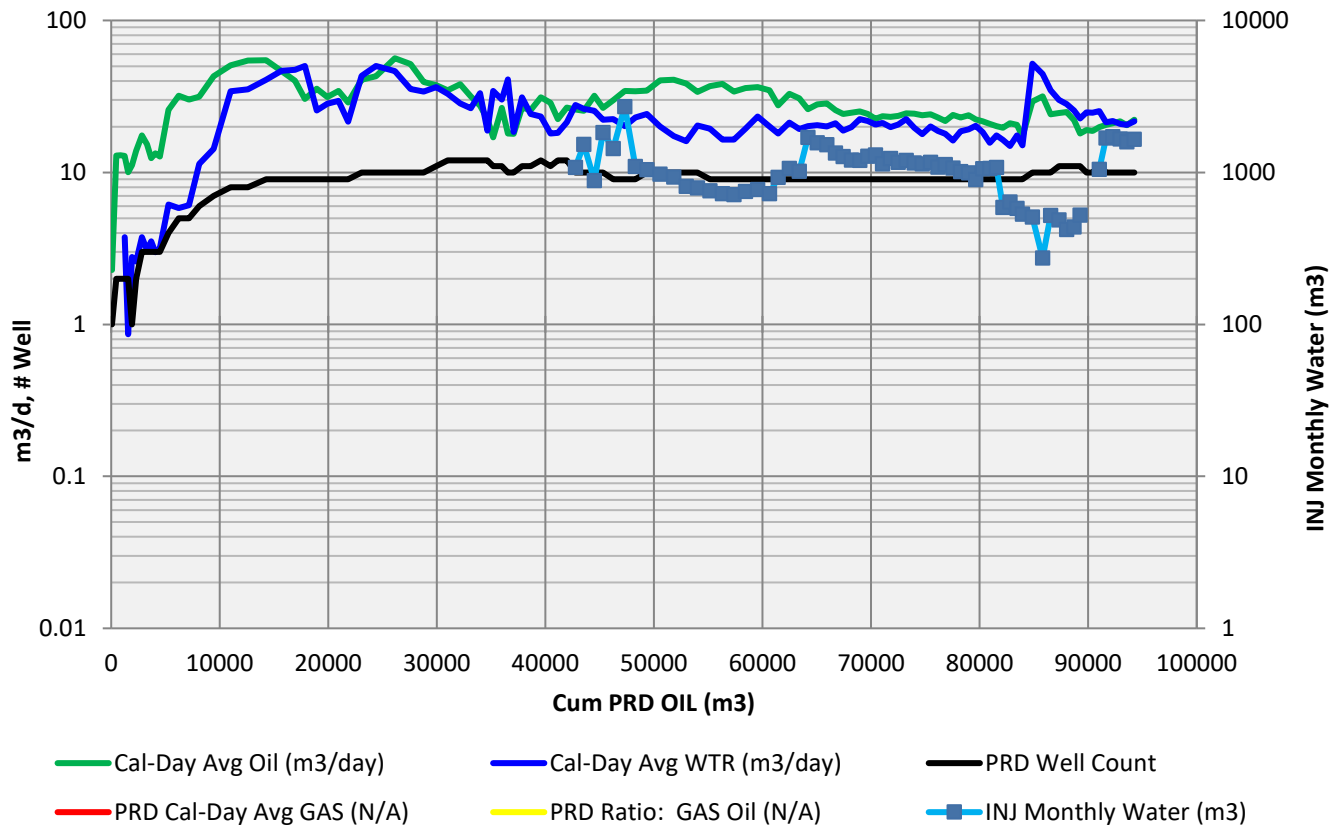
East Manson Unit No. 3 (Section 20 and 21) - VRR Table																										
Month	Days	Monthly Oil Prod (bbl)	Monthly Oil Prod (m3)	Monthly Gas Prod (E3m3)	Monthly H2O Prod (bbl)	Monthly H2O Prod (m3)	Monthly H2O Inj (bbl)	Monthly H2O Inj (m3)	Oil Prod (m3/d)	Gas Prod (E3m3/d)	H2O Prod (m3/d)	H2O Inj (m3/d)	Cum Oil (bbl)	Cum Oil (m3)	Cum Gas (E3m3)	Cum H2O (m3)	Cum H2O Inj (m3)	Prod Well Count	GOR (m3/m3)	H2OCut %	Voidage (rm3/d)	Monthly VRR	Cum GOR (m3/m3)	H2OCut %	Cum Void (rm3)	Cum VRR
Aug-10	31	445	70.7	0	0	0.0	0	0	2	0	0	0	445	71	0	0	0	1	0	0.0%	2	0.00	0.0	0.0%	51.6	0.000
Sep-10	30	1,563	386.8	0	0	0.0	0	0	13	0	0	0	2,878	458	0	0	0	2	0	0.0%	9	0.00	0.0	0.0%	334.0	0.000
Oct-10	31	1,449	402.3	0	0	0.0	0	0	13	0	0	0	5,408	860	0	0	0	2	0	0.0%	9	0.00	0.0	0.0%	627.6	0.000
Nov-10	30	1,486	384.4	0	0	112.4	0	0	13	0	4	0	7,826	1244	0	112	0	2	0	22.6%	13	0.00	0.0	8.3%	1021.2	0.000
Dec-10	31	1,075	310.8	0	0	26.7	0	0	10	0	1	0	9,781	1555	0	139	0	2	0	7.9%	8	0.00	0.0	8.2%	1274.9	0.000
Jan-11	31	1,257	346.5	0	0	86.1	0	0	11	0	3	0	11,960	1902	0	225	0	1	0	19.9%	11	0.00	0.0	10.6%	1614.4	0.000
Feb-11	28	1,732	388.4	0	0	72.7	0	0	14	0	3	0	14,403	2290	0	298	0	2	0	15.8%	13	0.00	0.0	11.5%	1971.0	0.000
Mar-11	31	2,559	543.8	0	173	116.3	0	0	18	0	4	0	17,824	2834	0	414	0	3	0	17.6%	17	0.00	0.0	12.8%	2484.8	0.000
Apr-11	30	2,091	459.6	0	43	92.2	0	0	15	0	3	0	20,715	3293	0	506	0	3	0	16.7%	14	0.00	0.0	13.3%	2913.0	0.000
May-11	31	1,664	385.2	0	187	109.2	0	0	12	0	4	0	23,138	3679	0	616	0	3	0	22.1%	13	0.00	0.0	14.3%	3303.9	0.000
Jun-11	30	1,739	401.3	0	124	89.5	0	0	13	0	3	0	25,662	4080	0	705	0	3	0	18.2%	13	0.00	0.0	14.7%	3686.8	0.000
Jul-11	31	1,734	394.6	0	160	98.4	0	0	13	0	3	0	28,144	4474	0	804	0	3	0	20.0%	12	0.00	0.0	15.2%	4073.8	0.000
Aug-11	31	4,362	798.4	0	697	190.9	0	0	26	0	6	0	33,166	5273	0	994	0	4	0	19.3%	25	0.00	0.0	15.9%	4848.5	0.000
Sep-11	30	5,433	957.2	0	681	175.1	0	0	32	0	6	0	39,187	6230	0	1170	0	5	0	15.5%	29	0.00	0.0	15.8%	5723.2	0.000
Oct-11	31	5,345	933.8	0	761	188.9	0	0	30	0	6	0	45,060	7164	0	1358	0	5	0	16.8%	28	0.00	0.0	15.9%	6594.7	0.000
Nov-11	30	5,541	945.8	0	1,750	341.5	0	0	32	0	11	0	51,009	8110	0	1700	0	6	0	26.5%	34	0.00	0.0	17.3%	7628.3	0.000
Dec-11	31	8,142	1,328.8	0	2,458	443.7	0	0	43	0	14	0	59,368	9438	0	2144	0	7	0	25.0%	46	0.00	0.0	18.5%	9044.3	0.000
Jan-12	31	9,565	1,572.5	0	6,427	1,057.6	0	0	51	0	34	0	69,259	11011	0	3201	0	8	0	40.2%	71	0.00	0.0	22.5%	11255.2	0.000
Feb-12	29	9,758	1,576.5	0	6,157	1,020.3	0	0	54	0	35	0	79,175	12587	0	4222	0	8	0	39.3%	75	0.00	0.0	25.1%	13431.5	0.000
Mar-12	31	10,458	1,696.2	0	7,585	1,261.1	0	0	55	0	41	0	89,844	14284	0	5483	0	9	0	42.6%	81	0.00	0.0	27.7%	15937.2	0.000
Apr-12	30	8,456	1,395.0	0	8,606	1,396.6	0	0	47	0	47	0	98,618	15679	0	6879	0	9	0	50.0%	81	0.00	0.0	30.5%	18359.2	0.000
May-12	31	7,648	1,244.8	0	9,132	1,463.7	0	0	40	0	47	0	106,448	16923	0	8343	0	9	0	54.0%	77	0.00	0.0	33.0%	20739.0	0.000
Jun-12	30	5,613	913.2	0	8,546	1,503.3	0	0	30	0	50	0	112,192	17837	0	9846	0	9	0	62.2%	73	0.00	0.0	35.6%	22916.6	0.000
Jul-12	31	6,821	1,104.5	0	4,902	792.7	0	0	36	0	26	0	119,140	18941	0	10639	0	9	0	41.8%	52	0.00	0.0	36.0%	24519.6	0.000
Aug-12	31	5,964	970.4	0	5,404	878.0	0	0	31	0	28	0	125,243	19912	0	11517	0	9	0	47.5%	51	0.00	0.0	36.6%	26110.4	0.000
Sep-12	30	6,097	1,029.1	0	5,462	887.3	0	0	34	0	30	0	131,716	20941	0	12404	0	9	0	46.3%	55	0.00	0.0	37.2%	27753.5	0.000
Oct-12	31	5,213	893.4	0	4,122	668.7	0	0	29	0	22	0	137,336	21834	0	13073	0	9	0	42.8%	43	0.00	0.0	37.5%	29077.8	0.000
Nov-12	30	7,410	1,221.7	0	8,072	1,294.8	0	0	41	0	43	0	145,020	23056	0	14368	0	10	0	51.5%	73	0.00	0.0	38.4%	31271.0	0.000
Dec-12	31	7,976	1,328.3	0	9,736	1,552.0	0	0	43	0	50	0	153,375	24384	0	15920	0	10	0	53.9%	82	0.00	0.0	39.5%	33800.5	0.000
Jan-13	31	10,429	1,747.8	0	9,021	1,439.7	0	0	56	0	46	0	164,369	26132	0	17359	0	10	0	45.2%	88	0.00	0.0	39.9%	36523.4	0.000
Feb-13	28	8,665	1,445.8	0	6,205	990.0	0	0	52	0	35	0	173,463	27578	0	18349	0	10	0	40.6%	73	0.00	0.0	40.0%	38573.8	0.000
Mar-13	31	7,259	1,221.8	0	6,587	1,052.5	0	0	39	0	34	0	181,148	28799	0	19402	0	10	0	46.3%	63	0.00	0.0	40.3%	40523.6	0.000
Apr-13	30	6,664	1,123.4	0	6,845	1,092.5	0	0	37	0	36	0	188,214	29923	0	20494	0	11	0	49.3%	64	0.00	0.0	40.6%	42441.7	0.000
May-13	31	6,380	1,076.8	0	6,392	1,020.2	0	0	35	0	33	0	194,987	31000	0	21515	0	12	0	48.7%	58	0.00	0.0	41.0%	44253.1	0.000
Jun-13	30	6,954	1,144.1	0	5,238	853.4	0	0	38	0	28	0	202,184	32144	0	22368	0	12	0	42.7%	56	0.00	0.0	41.0%	45946.0	0.000
Jul-13	31	5,934	981.5	0	5,088	821.3	0	0	32	0	26	0	208,358	33125	0	23189	0	12	0	45.6%	50	0.00	0.0	41.2%	47488.0	0.000
Aug-13	31	4,983	850.3	0	6,375	1,029.2	0	0	27	0	33	0	213,706	33976	0	24219	0	12	0	54.8%	53	0.00	0.0	41.6%	49143.1	0.000
Sep-13	30	3,927	673.2	0	3,491	564.4	0	0	22	0	19	0	217,940	34649	0	24783	0	12	0	45.6%	35	0.00	0.0	41.7%	50201.8	0.000
Oct-13	31	3,051	526.7	0	6,607	1,063.2	0	0	17	0	34	0	221,253	35175	0	25846	0	11	0	66.9%	47	0.00	0.0	42.4%	51654.9	0.000
Nov-13	30	4,819	796.6	0	5,629	904.9	0	0	27	0	30	0	226,264	35972	0	26751	0	11	0	53.2%	50	0.00	0.0	42.6%	53145.9	0.000
Dec-13	31	3,284	560.2	0	7,911	1,271.3	0	0	18	0	41	0	229,788	36532	0	28022	0	10	0	69.4%	54	0.00	0.0	43.4%	54832.7	0.000
Jan-14	31	3,308	555.4	0	3,544	572.4	0	0	18	0	18	0	233,281	37088	0	28595	0	10	0	50.8%	32	0.00	0.0	43.5%	55813.4	0.000
Feb-14	28	4,423	749.0	0	5,438	873.6	0	0	27	0	31	0	237,992	37837	0	29468	0	11	0	53.8%	51	0.00	0.0	43.8%	57238.2	0.000
Mar-14	31	4,849	794.5	0	4,612	753.1	0	0	26	0	24	0	242,990	38631	0	30221	0	11	0	48.7%	43	0.00	0.0	43.9%	58575.1	0.000
Apr-14	30	5,739	935.5	0	4,292	700.5	0	0	31	0	23	0	248,874	39567	0	30922	0	12	0	42.8%	46	0.00	0.0	43.9%	59962.1	0.000
May-14	31	5,613	892.0	0	3,514	558.4	0	0	29	0	18	0	254,485	40459	0	31480	0	11	0	38.5%	39	0.00	0.0	43.8%	61174.4	0.000
Jun-14	30	4,026	674.3	0	3,427	545.0	0	0	22	0	18	0	258,726	41133	0	32025	0	12	0	44.7%	35	0.00	0.0	43.8%	62214.4	0.000
Jul-14	31	5,027	828.0	0	3,917	662.4	107	0	27	0	21	0	263,934	41961	0	32688	0	12	0	44.4%	41	0.00	0.0	43.8%	63484.6	0.000
Aug-14	31	4,998	804.8	0	5,283	858.8	3,167	1,079	26	0	28	35	268,996	42766	0	33547	1079	10	0	51.6%	47	0.75	0.0	44.0%	64935.3	0.017
Sep-14	30	4,722	764.8	0	4,837	786.1	5,570	1,532	25	0	26	51	273,807	43531	0	34333	2611	10	0	50.7%	45	1.14	0.0	44.1%	66283.7	0.040
Oct-14	31	5,913	989.6	0	4,673	786.8	7,135	883	32	0	25	28	280,031	44520	0	35119	3494	10	0	44.3%	49	0.59	0.0	44.1%	67796.9	0.052
Nov-14	30	4,883	797.3	0	3,958	665.8	11,081	1,830	27	0	22	61	285,046	45317	0	35785	5324	10	0	45.5%	42	1.47	0.0	44.1%	69048.1	0.077
Dec-14	31	5,575	927.3	0	4,138	695.9	9,113	1,435	30	0	22	46	290,879	46245	0	36481	6759	9	0	42.9%	44	1.05	0.0	44.1%	70424.4	0.096
Jan-15	31	6,404	1,066.2	0	3,732	625.3	17,080																			

East Manson Unit No. 3 (Section 20 and 21) - VRR Table																										
Month	Days	Monthly Oil Prod (bbl)	Monthly Oil Prod (m3)	Monthly Gas Prod (E3m3)	Monthly H2O Prod (bbl)	Monthly H2O Prod (m3)	Monthly H2O Inj (bbl)	Monthly H2O Inj (m3)	Oil Prod (m3/d)	Gas Prod (E3m3/d)	H2O Prod (m3/d)	H2O Inj (m3/d)	Cum Oil (bbl)	Cum Oil (m3)	Cum Gas (E3m3)	Cum H2O (m3)	Cum H2O Inj (m3)	Prod Well Count	GOR (m3/m3)	H2OCut %	Voidage (rm3/d)	Monthly VRR	Cum GOR (m3/m3)	H2OCut %	Cum Void (rm3)	Cum VRR
Apr-16	30	5,811	923.9	0	3,644	579.3	6,385	1015.1638	31	0	19	34	398,669	63381	0	46045	22576	9	0	38.5%	42	0.81	0.0	42.1%	92546.1	0.245
May-16	31	5,084	808.3	0	3,940	626.4	10,687	1699.0747	26	0	20	55	403,753	64190	0	46671	24275	9	0	43.7%	39	1.40	0.0	42.1%	93765.6	0.260
Jun-16	30	5,302	842.9	0	3,851	612.3	9,846	1565.4134	28	0	20	52	409,055	65033	0	47283	25840	9	0	42.1%	41	1.28	0.0	42.1%	94996.3	0.273
Jul-16	31	5,535	879.9	0	3,918	622.9	9,559	1519.6932	28	0	20	49	414,590	65913	0	47906	27360	9	0	41.4%	41	1.20	0.0	42.1%	96264.7	0.286
Aug-16	31	5,010	796.6	0	4,108	653.1	8,437	1341.4118	26	0	21	43	419,600	66709	0	48559	28701	9	0	45.1%	40	1.09	0.0	42.1%	97502.6	0.296
Sep-16	30	4,580	728.1	0	3,556	565.4	8,006	1272.8808	24	0	19	42	424,180	67437	0	49125	29974	9	0	43.7%	37	1.16	0.0	42.1%	98602.3	0.306
Oct-16	31	4,821	766.4	0	3,878	616.5	7,592	1207.0509	25	0	20	39	429,001	68204	0	49741	31181	9	0	44.6%	38	1.03	0.0	42.2%	99781.5	0.314
Nov-16	30	4,752	755.4	0	4,234	673.1	7,529	1197.0461	25	0	22	40	433,753	68959	0	50414	32378	9	0	47.1%	41	0.98	0.0	42.2%	101009.5	0.322
Dec-16	31	4,723	750.9	0	4,253	676.2	8,054	1280.3847	24	0	22	41	438,476	69710	0	51090	33659	9	0	47.4%	40	1.05	0.0	42.3%	102237.3	0.331
Jan-17	31	4,405	700.3	0	4,034	641.4	8,205	1304.4944	23	0	21	42	442,881	70410	0	51732	34963	9	0	47.8%	37	1.13	0.0	42.4%	103393.2	0.340
Feb-17	28	4,120	655.0	0	3,718	591.1	7,158	1137.9189	23	0	21	41	447,001	71065	0	52323	36101	9	0	47.4%	38	1.07	0.0	42.4%	104465.4	0.347
Mar-17	31	4,530	720.1	0	3,883	617.3	7,757	1233.2623	23	0	20	40	451,531	71785	0	52940	37334	9	0	46.2%	37	1.08	0.0	42.4%	105611.5	0.355
Apr-17	30	4,440	705.8	0	3,897	619.5	7,317	1163.3307	24	0	21	39	455,970	72491	0	53560	38498	9	0	46.7%	38	1.03	0.0	42.5%	106749.3	0.362
May-17	31	4,773	758.8	0	4,365	694.0	7,556	1201.248	24	0	22	39	460,744	73250	0	54254	39699	9	0	47.8%	40	0.96	0.0	42.6%	108000.8	0.369
Jun-17	30	4,590	729.7	0	3,706	589.2	7,253	1153.0254	24	0	20	38	465,334	73980	0	54843	40852	9	0	44.7%	37	1.03	0.0	42.6%	109125.7	0.376
Jul-17	31	4,625	735.3	0	3,490	554.9	7,157	1137.8188	24	0	18	37	469,959	74715	0	55398	41990	9	0	43.0%	35	1.04	0.0	42.6%	110220.1	0.383
Aug-17	31	4,714	749.4	0	3,910	621.7	7,317	1163.3307	24	0	20	38	474,673	75465	0	56019	43153	9	0	45.3%	38	1.00	0.0	42.6%	111392.1	0.389
Sep-17	30	4,343	690.5	0	3,542	563.2	6,824	1084.8951	23	0	19	36	479,016	76155	0	56583	44238	9	0	44.9%	36	1.02	0.0	42.6%	112462.2	0.395
Oct-17	31	4,250	675.6	0	3,496	555.9	7,088	1126.814	22	0	18	36	483,266	76831	0	57138	45365	9	0	45.1%	34	1.08	0.0	42.7%	113514.0	0.402
Nov-17	30	4,515	717.8	0	3,053	485.4	6,704	1065.7854	24	0	16	36	487,781	77549	0	57624	46431	9	0	40.3%	34	1.06	0.0	42.6%	114525.9	0.407
Dec-17	31	4,489	713.7	0	3,639	578.5	6,380	1014.3625	23	0	19	33	492,270	78262	0	58202	47445	9	0	44.8%	36	0.92	0.0	42.7%	115628.3	0.412
Jan-18	31	4,644	738.2	0	3,746	595.5	6,237	991.65183	24	0	19	32	496,914	79001	0	58798	48437	9	0	44.6%	37	0.88	0.0	42.7%	116765.7	0.417
Feb-18	28	3,930	624.8	0	3,564	566.6	5,634	895.70906	22	0	20	32	500,844	79625	0	59364	49332	9	0	47.6%	37	0.88	0.0	42.7%	117791.2	0.421
Mar-18	31	4,231	672.7	0	3,579	569.1	6,655	1057.9825	22	0	18	34	505,075	80298	0	59933	50390	9	0	45.8%	34	1.00	0.0	42.7%	118854.3	0.426
Apr-18	30	3,941	626.5	0	2,958	470.2	6,693	1064.0859	21	0	16	35	509,015	80925	0	60404	51455	9	0	42.9%	31	1.15	0.0	42.7%	119784.2	0.432
May-18	31	3,938	626.1	0	3,418	543.3	6,770	1076.2909	20	0	18	35	512,954	81551	0	60947	52531	9	0	46.5%	32	1.08	0.0	42.8%	120787.3	0.437
Jun-18	30	3,708	589.6	0	3,090	491.2	3,710	589.76948	20	0	16	20	516,662	82140	0	61438	53121	9	0	45.5%	31	0.64	0.0	42.8%	121711.4	0.439
Jul-18	31	4,097	651.3	0	2,915	463.4	4,021	639.29094	21	0	15	21	520,759	82792	0	61902	53760	9	0	41.6%	30	0.68	0.0	42.8%	122652.6	0.441
Aug-18	31	4,010	637.6	0	3,421	543.8	3,645	579.46423	21	0	18	19	524,769	83429	0	62445	54339	9	0	46.0%	33	0.58	0.0	42.8%	123664.7	0.442
Sep-18	30	3,262	518.6	0	2,845	452.3	3,342	531.24165	17	0	15	18	528,031	83948	0	62898	54871	9	0	46.6%	28	0.64	0.0	42.8%	124497.9	0.443
Oct-18	31	5,704	906.9	0	10,125	1,609.6	3,194	507.83148	29	0	52	16	533,736	84855	0	64507	55378	10	0	64.0%	74	0.22	0.0	43.2%	126777.7	0.439
Nov-18	30	5,971	949.2	0	8,378	1,331.9	1,717	272.92369	32	0	44	9	539,706	85804	0	65839	55651	10	0	58.4%	68	0.14	0.0	43.4%	128809.4	0.434
Dec-18	31	4,702	747.5	0	6,755	1,074.0	3,285	522.23847	24	0	35	17	544,408	86551	0	66913	56174	10	0	59.0%	52	0.32	0.0	43.6%	130434.5	0.433
Jan-19	31	4,794	762.1	0	5,849	929.8	3,070	488.02226	25	0	30	16	549,202	87314	0	67843	56662	11	0	55.0%	48	0.33	0.0	43.7%	131925.4	0.432
Feb-19	28	4,402	699.9	0	4,956	787.9	2,651	421.39269	25	0	28	15	553,605	88013	0	68631	57083	11	0	53.0%	47	0.33	0.0	43.8%	133228.2	0.431
Mar-19	31	4,305	684.4	0	4,979	791.6	2,758	438.40064	22	0	26	14	557,910	88698	0	69422	57521	11	0	53.6%	42	0.34	0.0	43.9%	134523.4	0.430
Apr-19	30	3,404	541.2	0	4,279	680.2	3,297	524.13831	18	0	23	17	561,314	89239	0	70103	58046	11	0	55.7%	36	0.49	0.0	44.0%	135602.2	0.430
May-19	31	3,714	590.5	0	4,831	768.1	0	0	19	0	25	0	565,028	89830	0	70871	58046	10	0	56.5%	39	0.00	0.0	44.1%	136805.2	0.426
Jun-19	30	3,539	562.7	0	4,656	740.2	0	0	19	0	25	0	568,567	90392	0	71611	58046	10	0	56.8%	38	0.00	0.0	44.2%	137959.9	0.423
Jul-19	31	3,875	616.1	0	4,930	783.9	6,591	1047.8776	20	0	25	34	572,443	91008	0	72395	59093	11	0	56.0%	40	0.85	0.0	44.3%	139197.5	0.427
Aug-19	31	4,002	636.2	0	4,156	660.8	10,612	1687.1701	21	0	21	54	576,444	91645	0	73056	60781	10	0	50.9%	36	1.50	0.0	44.4%	140326.1	0.435
Sep-19	30	3,969	631.0	0	4,117	654.5	10,807	1718.1828	21	0	22	57	580,413	92276	0	73710	62499	10	0	50.9%	37	1.54	0.0	44.4%	141444.5	0.444
Oct-19	31	4,234	673.2	0	4,071	647.2	10,441	1659.9571	22	0	21	54	584,648	92949	0	74357	64159	10	0	49.0%	37	1.46	0.0	44.4%	142586.4	0.452
Nov-19	30	3,863	614.1	0	3,877	616.4	9,989	1588.124	20	0	21	53	588,510	93563	0	74974	65747	10	0	50.1%	36	1.49	0.0	44.5%	143654.2	0.460
Dec-19	31	4,323	687.2	0	4,228	672.2	10,376	1649.6518	22	0	22	53	592,833	94250	0	75646	67396	10	0	49.4%	38	1.41	0.0	44.5%	144831.5	0.468

East Manson Unit No. 3 - Rate Time



East Manson Unit No. 3 - Rate Cum

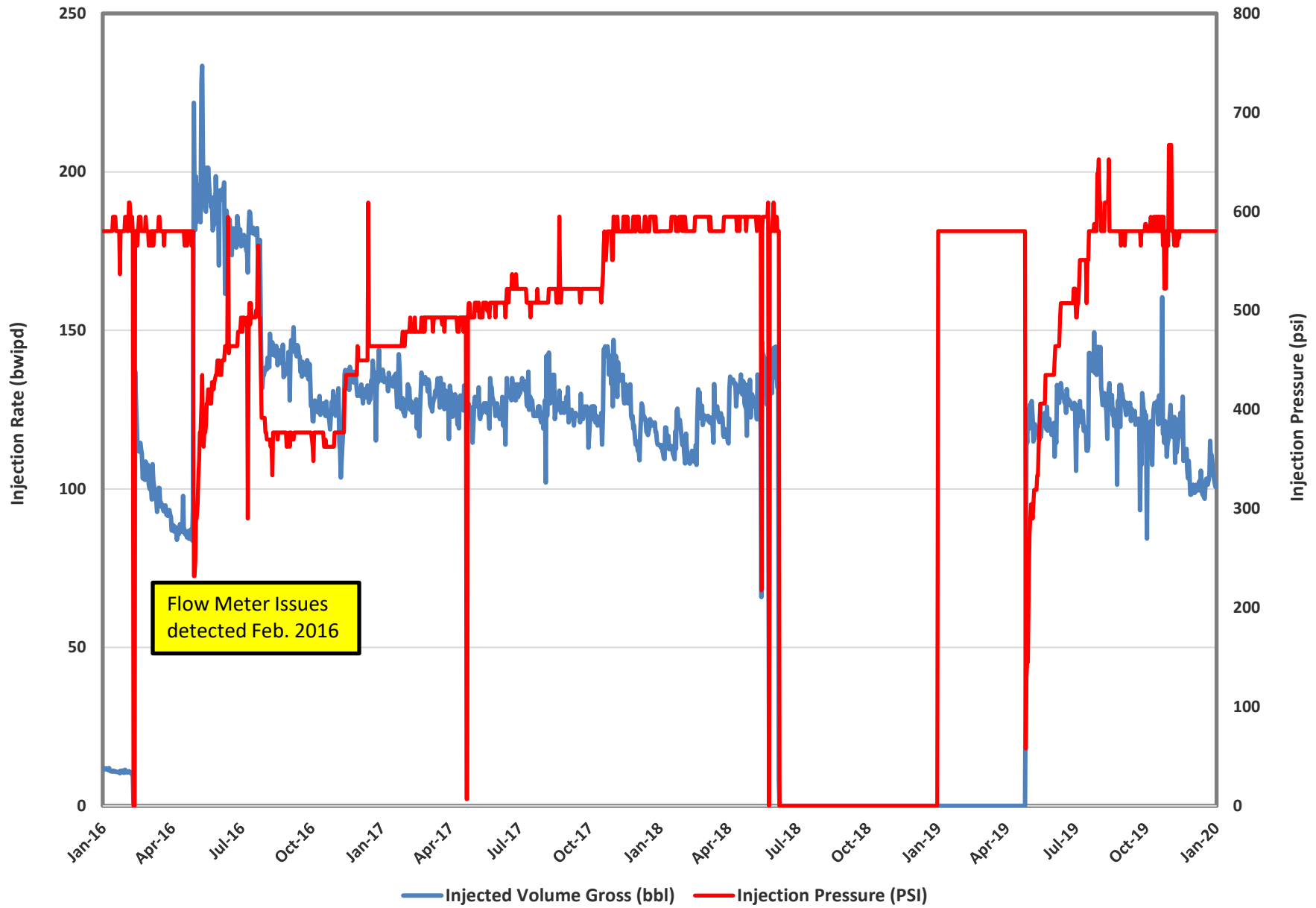


East Manson Unit No. 3 - Injection Parameters

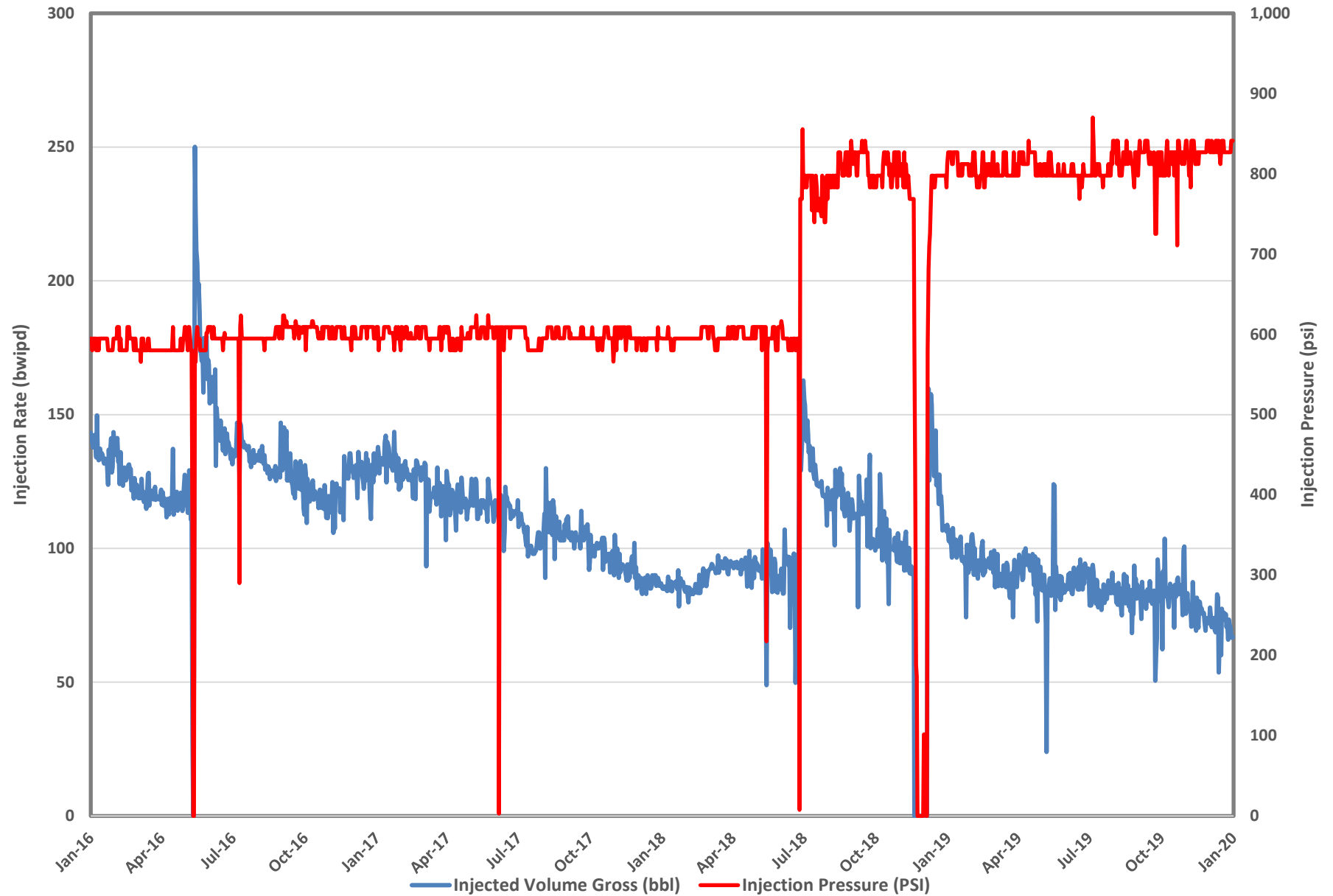
Month	Oil Rate (m3/d)	Gas Rate (e3m3/d)	Water Rate (m3/d)	Water Inj Rate (m3/d)	Cum Oil (m3)	Cum Gas (e3m3)	Cum Water (m3)	Cum Inj Water (m3)	GOR (m3/m3)	WOR (m3/m3)
Jan-19	24.6	0.0	30.0	15.7	87,314	0.0	67,843	56,662	0	1.22
Feb-19	25.0	0.0	28.1	15.0	88,013	0.0	68,631	57,083	0	1.13
Mar-19	22.1	0.0	25.5	14.1	88,698	0.0	69,422	57,521	0	1.16
Apr-19	18.0	0.0	22.7	17.5	89,239	0.0	70,103	58,046	0	1.26
May-19	19.0	0.0	24.8	0.0	89,830	0.0	70,871	58,046	0	1.30
Jun-19	18.8	0.0	24.7	0.0	90,392	0.0	71,611	58,046	0	1.32
Jul-19	19.9	0.0	25.3	33.8	91,008	0.0	72,395	59,093	0	1.27
Aug-19	20.5	0.0	21.3	54.4	91,645	0.0	73,056	60,781	0	1.04
Sep-19	21.0	0.0	21.8	57.3	92,276	0.0	73,710	62,499	0	1.04
Oct-19	21.7	0.0	20.9	53.5	92,949	0.0	74,357	64,159	0	0.96
Nov-19	20.5	0.0	20.5	52.9	93,563	0.0	74,974	65,747	0	1.00
Dec-19	22.2	0.0	21.7	53.2	94,250	0.0	75,646	67,396	0	0.98

Month	00/15-20 Water Inj Press (psi)	00/08-21 Water Inj Press (psi)	00/04-20 Water Inj Press (psi)	00/16-21 Water Inj Press (psi)
Jan-19	580	814	0	0
Feb-19	580	803	0	0
Mar-19	580	803	0	0
Apr-19	507	817	0	0
May-19	376	803	0	0
Jun-19	493	798	0	0
Jul-19	562	807	0	0
Aug-19	589	819	0	8
Sep-19	579	817	0	119
Oct-19	581	816	0	293
Nov-19	587	826	0	439
Dec-19	580	831	65	556

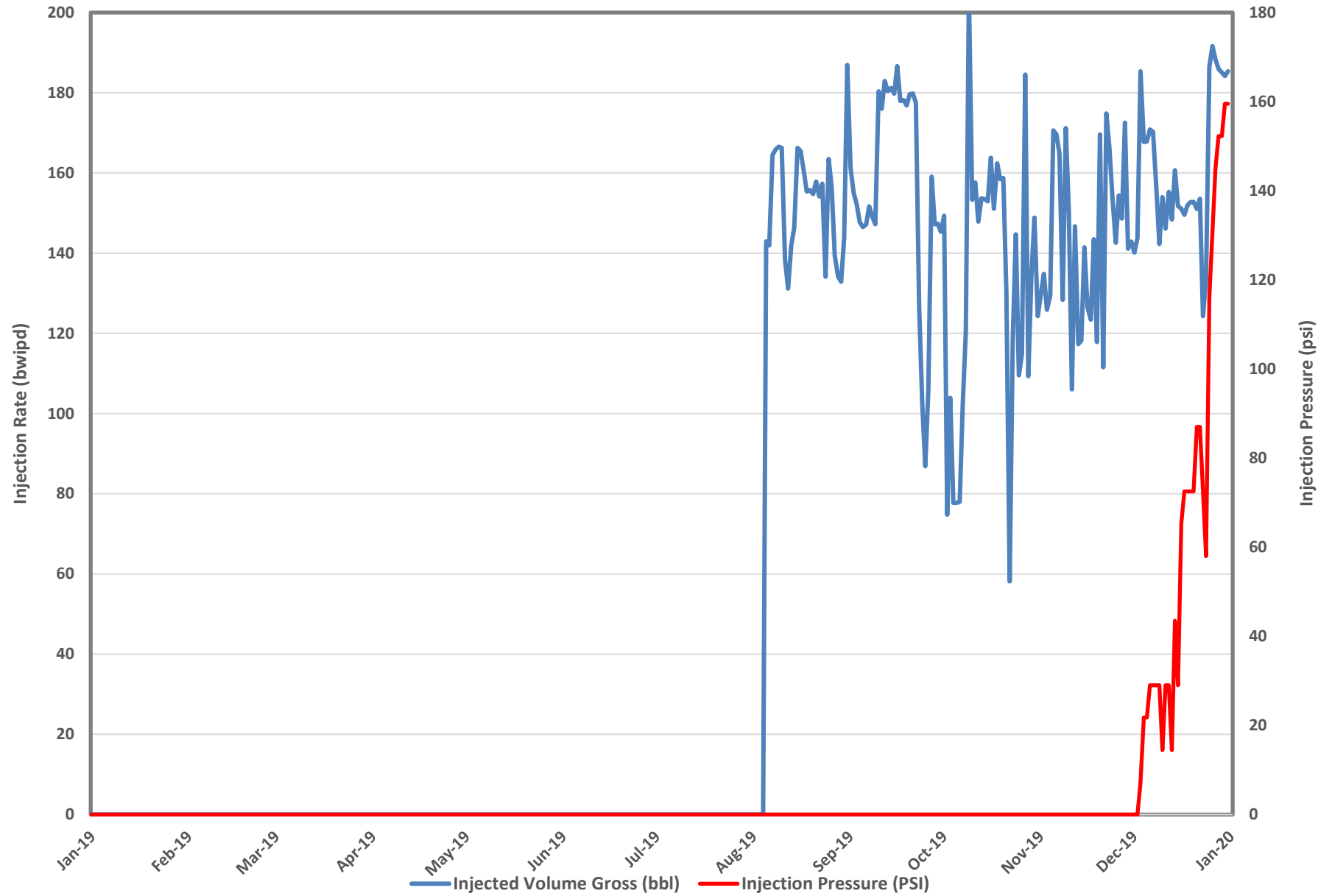
00/15-20-013-28W1 Rate vs Pressure



00/08-21-013-28W1 Injection Rate vs Pressure



00/04-20-013-28W1 Injection Rate vs Pressure



00/16-21-013-28W1 Injection Rate vs Pressure

