

# TORC OIL & GAS LTD.

EAST MANSON UNIT #5

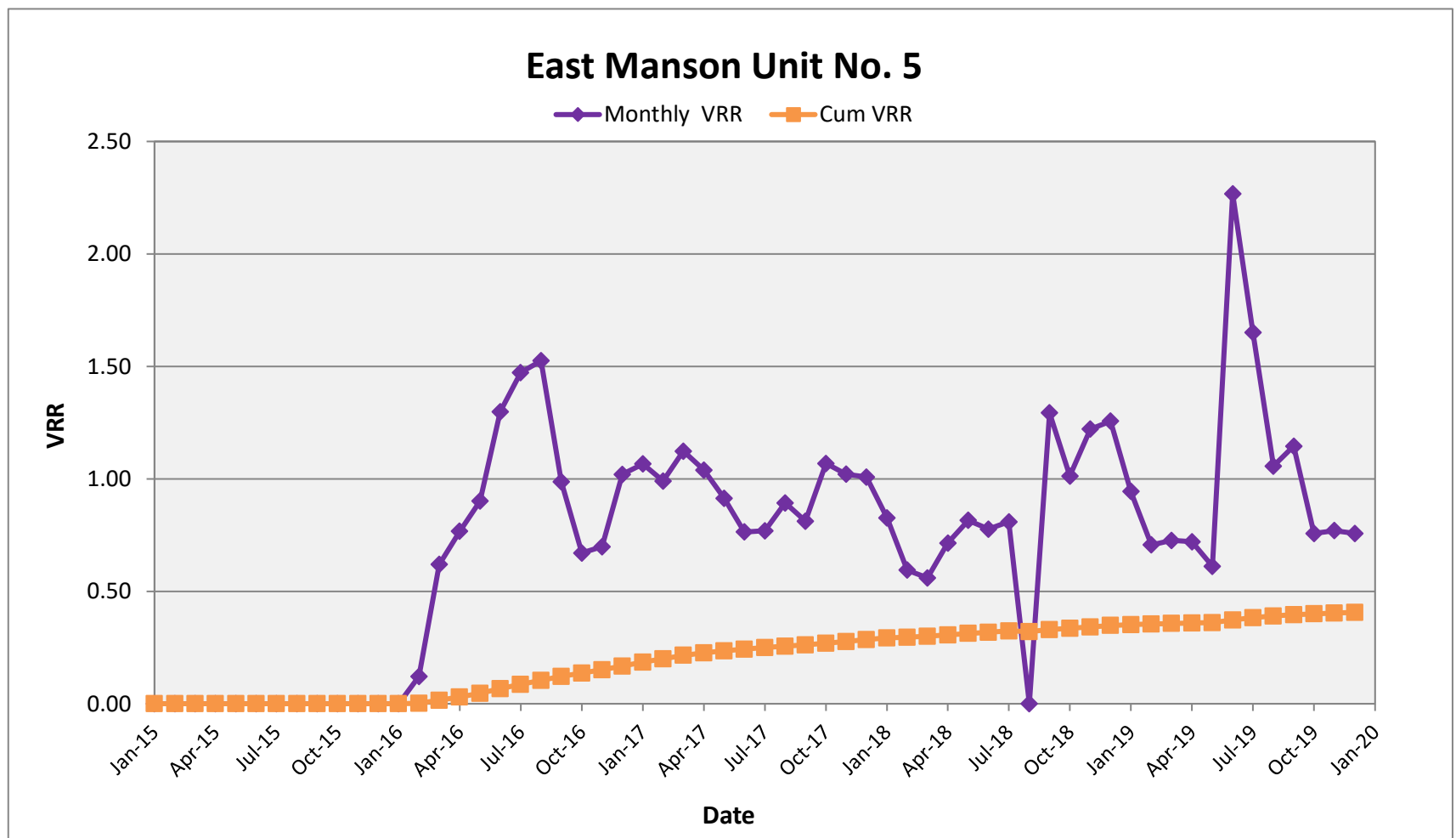
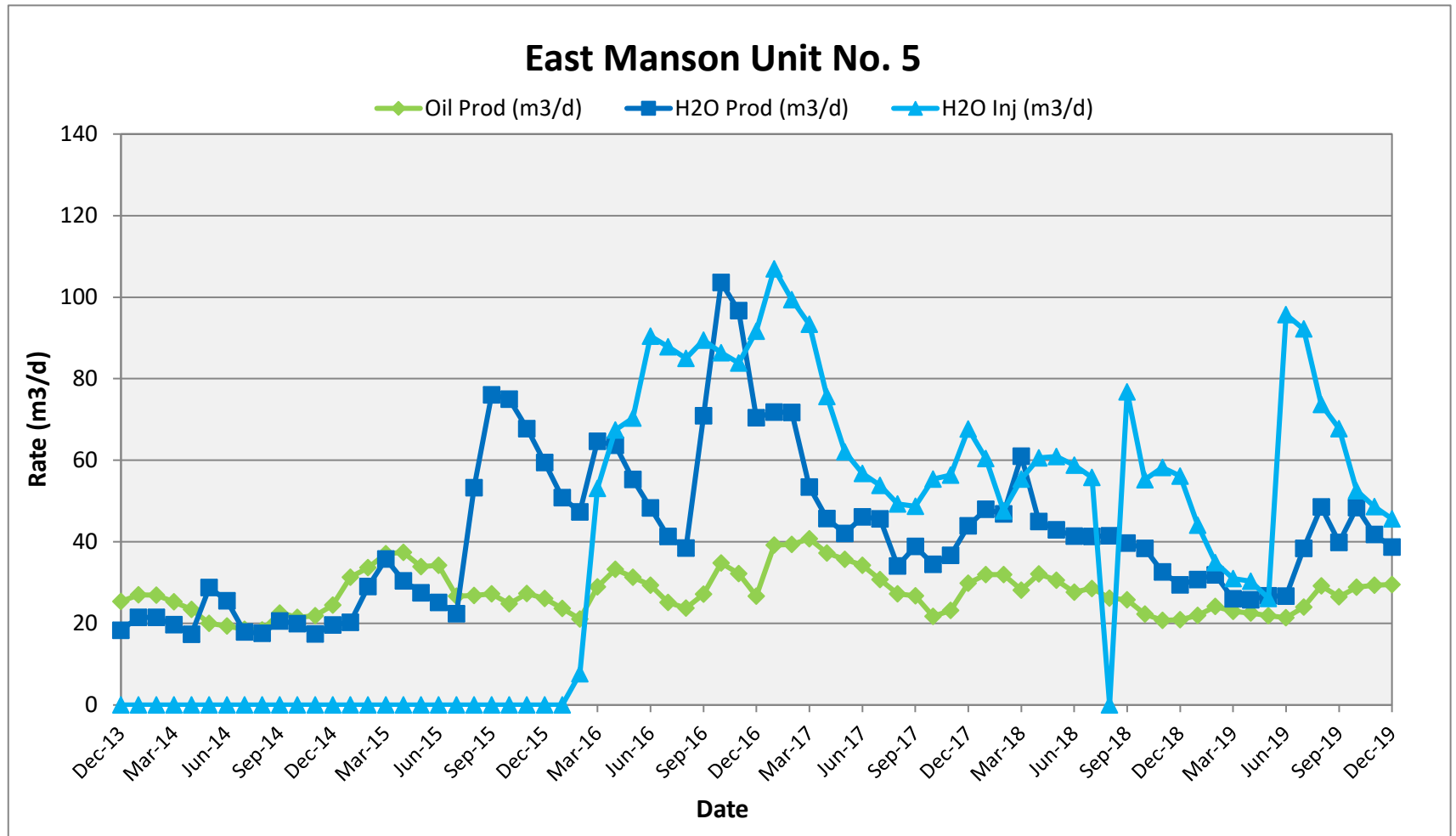
ENHANCED OIL RECOVERY (EOR) ANNUAL REPORT

## **Discussion**

East Manson Unit #5 delivered another year of steady flood performance throughout 2019. In its 3<sup>rd</sup> year of operations since inception, this flood has continued to show that injection conformance has been effective in arresting production decline and providing sufficient pressure maintenance to the reservoir.

In 2019, TORC executed an extensive waterflood optimization program in EMU5. A total of 5 injectors were worked over to cleanout the lateral and stimulate with acid. Injection rates increased substantially and offsetting oil production was favorable. Since the cleanouts, injection rates have declined but production remains steady.

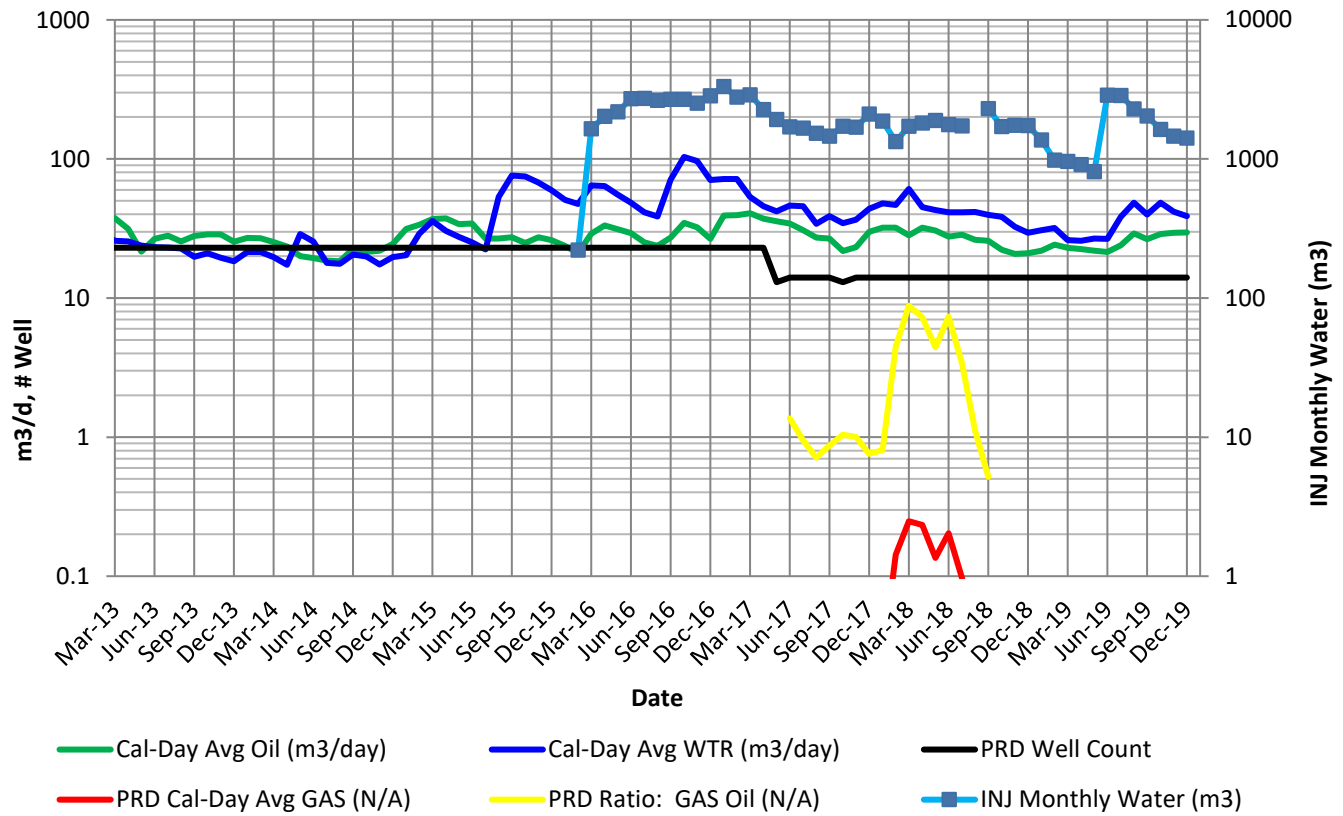
	Date	Oil Prod (m3/d)	Gas Prod (e3m3/d)	H2O Prod (m3/d)	H2O Inj (m3/d)	Monthly VRR	Cum VRR	Cum PRD Oil (m3)	Cum PRD Gas (e3m3)	Cum PRD Water (m3)	Cum INJ Water (m3)
EMU No.5	Dec-2019	30	-	39	46	0.76	0.406	110,023	40	136,751	89,125



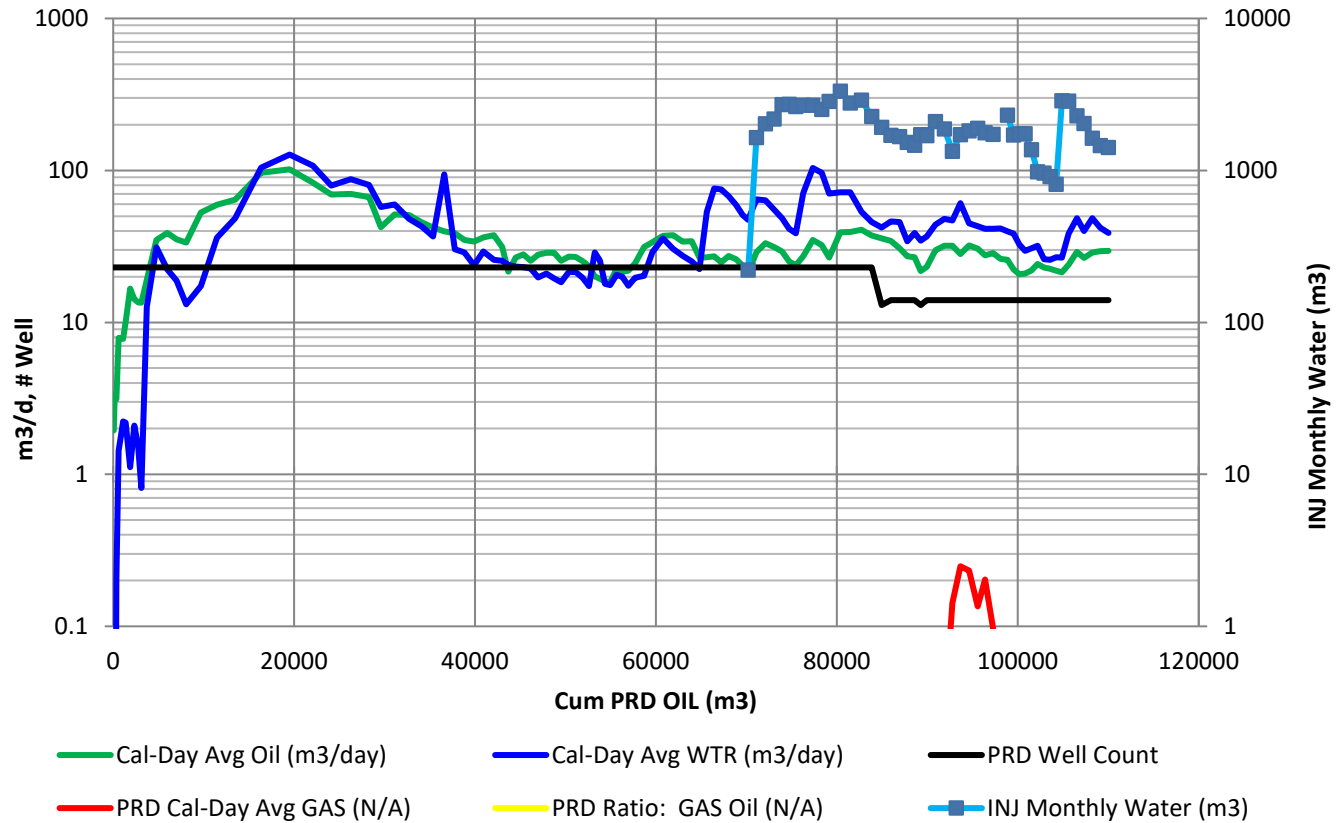
East Manson Unit No. 5 (Section 7, 15, 16, 17) - VRR Table																										
Month	Days	Monthly Oil Prod	Monthly Oil Prod	Monthly Gas Prod	Monthly H2O Prod	Monthly H2O Prod	Monthly H2O Inj	Monthly H2O Inj	Oil Prod	Gas Prod	H2O Prod	H2O Inj	Cum Oil	Cum Oil	Cum Gas	Cum H2O	Cum H2O Inj	Prod Well Count	GOR	H2OCut	Voidage	Monthly VRR	Cum GOR	H2OCut	Cum Void	Cum VRR
		(bbl)	(m3)	(E3m3)	(bbl)	(m3)	(bbl)	(m3)	(m3/d)	(E3m3/d)	(m3/d)	(m3/d)	(bbl)	(m3)	(E3m3)	(m3)	(m3)		(m3/m3)	%	(rm3/d)		(m3/m3)	%	(rm3)	
Mar-10	31	379	60.3	0	7	1.1	0	0	2	0	0	0	379	60	0	1	0	23	0	1.8%	1	0.00	0.0	1.8%	45.1	0.000
Apr-10	30	636	101.0	0	1	0.2	0	0	3	0	0	0	1,015	161	0	1	0	23	0	0.2%	2	0.00	0.0	0.8%	119.1	0.000
May-10	31	624	99.1	0	1	0.2	0	0	3	0	0	0	1,639	261	0	2	0	23	0	0.2%	2	0.00	0.0	0.6%	191.7	0.000
Jun-10	30	590	93.8	0	39	6.2	0	0	3	0	0	0	2,229	354	0	8	0	23	0	6.2%	2	0.00	0.0	2.1%	266.4	0.000
Jul-10	31	1,542	245.1	0	279	44.4	0	0	8	0	1	0	3,771	599	0	52	0	23	0	15.3%	7	0.00	0.0	8.0%	490.0	0.000
Aug-10	31	1,534	243.8	0	347	55.1	0	0	8	0	2	0	5,304	843	0	107	0	23	0	18.4%	8	0.00	0.0	11.3%	723.4	0.000
Sep-10	30	1,468	233.4	0	421	66.9	0	0	8	0	2	0	6,772	1077	0	174	0	23	0	22.3%	8	0.00	0.0	13.9%	961.0	0.000
Oct-10	31	1,963	312.1	0	427	67.8	0	0	10	0	2	0	8,736	1389	0	242	0	23	0	17.9%	10	0.00	0.0	14.8%	1257.1	0.000
Nov-10	30	3,145	500.0	0	211	33.5	0	0	17	0	1	0	11,881	1889	0	276	0	23	0	6.3%	13	0.00	0.0	12.7%	1655.7	0.000
Dec-10	31	2,765	439.6	0	408	64.8	0	0	14	0	2	0	14,646	2328	0	340	0	23	0	12.9%	12	0.00	0.0	12.8%	2041.8	0.000
Jan-11	31	2,644	420.3	0	300	47.6	0	0	14	0	2	0	17,290	2749	0	388	0	23	0	10.2%	11	0.00	0.0	12.4%	2396.5	0.000
Feb-11	28	2,375	377.6	0	143	22.8	0	0	13	0	1	0	19,665	3126	0	411	0	23	0	5.7%	11	0.00	0.0	11.6%	2695.0	0.000
Mar-11	31	3,712	590.1	0	2,462	391.4	0	0	19	0	13	0	23,376	3716	0	802	0	23	0	39.9%	27	0.00	0.0	17.8%	3519.1	0.000
Apr-11	30	6,579	1,045.9	0	5,889	936.2	0	0	35	0	31	0	29,955	4762	0	1738	0	23	0	47.2%	57	0.00	0.0	26.7%	5223.6	0.000
May-11	31	7,548	1,199.9	0	4,344	690.6	0	0	39	0	22	0	37,502	5962	0	2429	0	23	0	36.5%	51	0.00	0.0	28.9%	6793.6	0.000
Jun-11	30	6,626	1,053.5	0	3,545	563.7	0	0	35	0	19	0	44,129	7016	0	2993	0	23	0	34.9%	45	0.00	0.0	29.9%	8129.2	0.000
Jul-11	31	6,523	1,037.0	0	2,559	406.8	0	0	33	0	13	0	50,651	8053	0	3399	0	23	0	28.2%	38	0.00	0.0	29.7%	9295.0	0.000
Aug-11	31	10,288	1,635.6	0	3,381	537.5	0	0	53	0	17	0	60,940	9688	0	3937	0	23	0	24.7%	56	0.00	0.0	28.9%	11029.3	0.000
Sep-11	30	11,235	1,786.2	0	6,805	1,081.9	0	0	60	0	36	0	72,175	11475	0	5019	0	23	0	37.7%	80	0.00	0.0	30.4%	13420.6	0.000
Oct-11	31	12,539	1,993.4	0	9,441	1,500.9	0	0	64	0	48	0	84,713	13468	0	6520	0	23	0	43.0%	96	0.00	0.0	32.6%	16384.2	0.000
Nov-11	30	18,208	2,894.7	0	19,716	3,134.5	0	0	96	0	104	0	102,921	16363	0	9654	0	23	0	52.0%	175	0.00	0.0	37.1%	21647.8	0.000
Dec-11	31	19,831	3,152.7	0	24,788	3,940.9	0	0	102	0	127	0	122,752	19515	0	13595	0	23	0	55.6%	202	0.00	0.0	41.1%	27910.2	0.000
Jan-12	31	16,180	2,572.4	0	20,884	3,320.2	0	0	83	0	107	0	138,932	22088	0	16915	0	23	0	56.3%	168	0.00	0.0	43.4%	33125.1	0.000
Feb-12	29	12,659	2,012.5	0	14,506	2,306.3	0	0	69	0	80	0	151,591	24100	0	19222	0	23	0	53.4%	131	0.00	0.0	44.4%	36912.2	0.000
Mar-12	31	13,671	2,173.4	0	17,107	2,719.7	0	0	70	0	88	0	165,261	26274	0	21941	0	23	0	55.6%	139	0.00	0.0	45.5%	41232.3	0.000
Apr-12	30	12,575	1,999.2	0	15,112	2,402.6	0	0	67	0	80	0	177,837	28273	0	24344	0	23	0	54.6%	129	0.00	0.0	46.3%	45106.5	0.000
May-12	31	8,231	1,308.6	0	11,200	1,780.6	0	0	42	0	57	0	186,068	29581	0	26125	0	23	0	57.6%	89	0.00	0.0	46.9%	47851.5	0.000
Jun-12	30	9,710	1,543.7	0	11,247	1,788.1	0	0	51	0	60	0	195,777	31125	0	27913	0	23	0	53.7%	97	0.00	0.0	47.3%	50775.6	0.000
Jul-12	31	9,899	1,573.7	0	9,374	1,490.3	0	0	51	0	48	0	205,676	32699	0	29403	0	23	0	48.6%	85	0.00	0.0	47.3%	53422.2	0.000
Aug-12	31	8,885	1,412.5	0	8,327	1,323.8	0	0	46	0	43	0	214,561	34111	0	30727	0	23	0	48.4%	76	0.00	0.0	47.4%	55783.9	0.000
Sep-12	30	7,928	1,260.5	0	6,920	1,100.2	0	0	42	0	37	0	222,489	35372	0	31827	0	23	0	46.6%	68	0.00	0.0	47.4%	57809.8	0.000
Oct-12	31	7,748	1,231.9	0	18,319	2,912.3	0	0	40	0	94	0	230,238	36604	0	34739	0	23	0	70.3%	123	0.00	0.0	48.7%	61636.2	0.000
Nov-12	30	7,292	1,159.2	0	5,715	908.5	0	0	39	0	30	0	237,529	37763	0	35648	0	23	0	43.9%	59	0.00	0.0	48.6%	63395.6	0.000
Dec-12	31	6,786	1,078.8	0	5,628	894.8	0	0	35	0	29	0	244,315	38842	0	36543	0	23	0	45.3%	54	0.00	0.0	48.5%	65082.4	0.000
Jan-13	31	6,645	1,056.5	0	4,644	738.2	0	0	34	0	24	0	250,960	39898	0	37281	0	23	0	41.1%	49	0.00	0.0	48.3%	66595.6	0.000
Feb-13	28	6,378	1,014.0	0	5,158	820.0	0	0	36	0	29	0	257,338	40912	0	38101	0	23	0	44.7%	56	0.00	0.0	48.2%	68159.9	0.000
Mar-13	31	7,324	1,164.4	0	5,032	800.1	0	0	38	0	26	0	264,662	42077	0	38901	0	23	0	40.7%	53	0.00	0.0	48.0%	69814.1	0.000
Apr-13	30	5,910	939.6	0	4,806	764.1	0	0	31	0	25	0	270,573	43016	0	39665	0	23	0	44.9%	48	0.00	0.0	48.0%	71268.0	0.000
May-13	31	4,210	669.3	0	4,649	739.1	0	0	22	0	24	0	274,783	43686	0	40404	0	23	0	52.5%	40	0.00	0.0	48.0%	72499.5	0.000
Jun-13	30	5,034	800.4	0	4,391	698.0	0	0	27	0	23	0	279,817	44486	0	41102	0	23	0	46.6%	43	0.00	0.0	48.0%	73785.3	0.000
Jul-13	31	5,472	870.0	0	4,509	716.8	0	0	28	0	23	0	285,289	45356	0	41819	0	23	0	45.2%	44	0.00	0.0	48.0%	75140.9	0.000
Aug-13	31	4,967	789.7	0	4,419	702.6	0	0	25	0	23	0	290,256	46146	0	42522	0	23	0	47.1%	41	0.00	0.0	48.0%	76423.5	0.000
Sep-13	30	5,263	836.7	0	3,727	592.5	0	0	28	0	20	0	295,519	46982	0	43114	0	23	0	41.5%	40	0.00	0.0	47.9%	77629.8	0.000
Oct-13	31	5,595	889.5	0	4,089	650.1	0	0	29	0	21	0	301,114	47872	0	43764	0	23	0	42.2%	42	0.00	0.0	47.8%	78932.5	0.000
Nov-13	30	5,406	859.5	0	3,671	583.6	0	0	29	0	19	0	306,520	48731	0	44348	0	23	0	40.4%	40	0.00	0.0	47.6%	80146.4	0.000
Dec-13	31	4,954	787.7	0	3,578	568.9	0	0	25	0	18	0	311,474	49519	0	44917	0	23	0	41.9%	37	0.00	0.0	47.6%	81293.2	0.000
Jan-14	31	5,270	837.8	0	4,185	665.3	0	0	27	0	21	0	316,744	50357	0	45582	0	23	0	44.3%	41	0.00	0.0	47.5%	82573.4	0.000
Feb-14	28	4,747	754.7	0	3,780	600.9	0	0	27	0	21	0	321,491	51112	0	46183	0	23	0	44.3%	41	0.00	0.0	47.5%	83728.3	0.000
Mar-14	31	4,927	783.4	0	3,839	610.3	0	0	25	0	20	0	326,419	51895	0	46793	0	23	0	43.8%	38	0.00	0.0	47.4%	84913.5	0.000
Apr-14	30	4,425	703.4	0	3,272	520.1	0	0	23	0	17	0	330,843	52598	0	47313	0	23	0	42.5%	35	0.00	0.0	47.4%	85949.8	0.000
May-14	31	3,908	621.3	0	5,618	893.1	0	0	20	0	29	0	334,751	53220	0	48206	0	23	0	59.0%	44	0.00	0.0	47.5%	87301.0	0.000
Jun-14	30	3,657	581.5	0	4,818	765.9	0	0	19	0	26	0	338,409	53801	0	48972	0	23	0	56.8%	40	0.00	0.0	47.7%	88495.3	0.000
Jul-14	31	3,615	574.7	0	3,498	556.2	0	0	19																	

East Manson Unit No. 5 (Section 7, 15, 16, 17) - VRR Table																										
		Monthly	Monthly	Monthly	Monthly	Monthly	Monthly	Monthly	Oil Prod	Gas Prod	H2O Prod	H2O Inj	Cum Oil	Cum Oil	Cum Gas	Cum H2O	Cum H2O Inj	Prod	GOR	H2OCut	Voidage	Monthly	Cum GOR	H2OCut	Cum Void	Cum VRR
Month	Days	Oil Prod	Oil Prod	Gas Prod	H2O Prod	H2O Prod	H2O Inj	H2O Inj	(m3/d)	(E3m3/d)	(m3/d)	(m3/d)	(bbl)	(m3)	(E3m3)	(m3)	(m3)	Well	(m3/m3)	%	(rm3/d)	VRR	(m3/m3)	%	(rm3)	
		(bbl)	(m3)	(E3m3)	(bbl)	(m3)	(bbl)	(m3)										Count								
Nov-15	30	5,166	821.3	0	12,782	2,032.1	0	0	27	0	68	0	427,983	68042	0	66500	0	23	0	71.2%	88	0.00	0.0	49.4%	116507.2	0.000
Dec-15	31	5,091	809.4	0	11,590	1,842.6	0	0	26	0	59	0	433,074	68851	0	68342	0	23	0	69.5%	79	0.00	0.0	49.8%	118950.1	0.000
Jan-16	31	4,618	734.1	0	9,909	1,575.4	0	0	24	0	51	0	437,692	69585	0	69918	0	23	0	68.2%	68	0.00	0.0	50.1%	121069.4	0.000
Feb-16	29	3,851	612.3	0	8,641	1,373.7	1,392	221	21	0	47	8	441,543	70198	0	71291	221	23	0	69.2%	63	0.12	0.0	50.4%	122897.1	0.002
Mar-16	31	5,648	897.9	0	12,605	2,003.9	10,351	1,646	29	0	65	53	447,191	71096	0	73295	1867	23	0	69.1%	86	0.62	0.0	50.8%	125566.7	0.015
Apr-16	30	6,277	997.9	0	12,024	1,911.6	12,718	2,022	33	0	64	67	453,467	72093	0	75207	3889	23	0	65.7%	88	0.77	0.0	51.1%	128216.4	0.030
May-16	31	6,103	970.3	0	10,792	1,715.7	13,720	2,181	31	0	55	70	459,571	73064	0	76922	6070	23	0	63.9%	78	0.90	0.0	51.3%	130649.2	0.047
Jun-16	30	5,536	880.1	0	9,123	1,450.5	17,073	2,714	29	0	48	90	465,107	73944	0	78373	8784	23	0	62.2%	70	1.30	0.0	51.5%	132749.5	0.067
Jul-16	31	4,907	780.1	0	8,062	1,281.8	17,125	2,723	25	0	41	88	470,013	74724	0	79655	11507	23	0	62.2%	60	1.47	0.0	51.6%	134607.2	0.086
Aug-16	31	4,632	736.3	0	7,506	1,193.3	16,575	2,635	24	0	38	85	474,645	75460	0	80848	14142	23	0	61.8%	56	1.52	0.0	51.7%	136344.2	0.104
Sep-16	30	5,124	814.7	0	13,381	2,127.3	16,888	2,685	27	0	71	89	479,769	76275	0	82975	16827	23	0	72.3%	91	0.99	0.0	52.1%	139077.0	0.122
Oct-16	31	6,784	1,078.5	0	20,203	3,212.0	16,839	2,677	35	0	104	86	486,553	77353	0	86187	19504	23	0	74.9%	130	0.67	0.0	52.7%	143092.6	0.137
Nov-16	30	6,082	966.9	0	18,241	2,900.0	15,827	2,516	32	0	97	84	492,635	78320	0	89087	22020	23	0	75.0%	121	0.70	0.0	53.2%	146713.2	0.151
Dec-16	31	5,203	827.2	0	13,738	2,184.1	17,869	2,841	27	0	70	92	497,838	79147	0	91271	24861	23	0	72.5%	90	1.02	0.0	53.6%	149512.3	0.167
Jan-17	31	7,646	1,215.7	0	14,007	2,226.8	20,858	3,316	39	0	72	107	505,484	80363	0	93498	28177	23	0	64.7%	101	1.07	0.0	53.8%	152637.8	0.186
Feb-17	28	6,930	1,101.7	0	12,630	2,008.0	17,499	2,782	39	0	72	99	512,414	81465	0	95506	30959	23	0	64.6%	101	0.99	0.0	54.0%	155460.3	0.200
Mar-17	31	7,954	1,264.5	0	10,420	1,656.7	18,198	2,893	41	0	53	93	520,367	82729	0	97163	33853	23	0	56.7%	83	1.12	0.0	54.0%	158048.4	0.215
Apr-17	30	7,032	1,117.9	0	8,633	1,372.4	14,274	2,269	37	0	46	76	527,399	83847	0	98535	36122	23	0	55.1%	73	1.04	0.0	54.0%	160243.9	0.227
May-17	31	6,959	1,106.3	0	8,196	1,303.1	12,104	1,924	36	0	42	62	534,358	84954	0	99838	38046	13	0	54.1%	68	0.91	0.0	54.0%	162361.2	0.236
Jun-17	30	6,468	1,028.4	1.4	8,706	1,384.1	10,713	1,703	34	0	46	57	540,826	85982	1	101223	39749	14	1	57.4%	75	0.76	0.0	54.1%	164602.2	0.243
Jul-17	31	5,994	952.9	0.9	8,897	1,414.4	10,500	1,669	31	0	46	54	546,820	86935	2	102637	41419	14	1	59.7%	70	0.77	0.0	54.1%	166783.2	0.250
Aug-17	31	5,311	844.3	0.6	6,650	1,057.3	9,616	1,529	27	0	34	49	552,131	87779	3	103694	42947	14	1	55.6%	56	0.89	0.0	54.2%	168504.7	0.256
Sep-17	30	5,057	804.0	0.7	7,333	1,165.8	9,193	1,462	27	0	39	49	557,188	88583	4	104860	44409	14	1	59.2%	60	0.81	0.0	54.2%	170312.9	0.262
Oct-17	31	4,241	674.3	0.7	6,722	1,068.7	10,803	1,717	22	0	34	55	561,429	89257	4	105929	46126	13	1	61.3%	52	1.07	0.0	54.3%	171928.8	0.270
Nov-17	30	4,381	696.5	0.7	6,925	1,100.9	10,631	1,690	23	0	37	56	565,810	89954	5	107030	47817	14	1	61.2%	55	1.02	0.1	54.3%	173593.3	0.277
Dec-17	31	5,824	925.9	0.7	8,560	1,360.8	13,202	2,099	30	0	44	68	571,634	90880	6	108391	49916	14	1	59.5%	68	1.01	0.1	54.4%	175686.6	0.286
Jan-18	31	6,242	992.4	0.8	9,358	1,487.7	11,781	1,873	32	0	48	60	577,876	91872	7	109878	51789	14	1	60.0%	73	0.83	0.1	54.5%	177962.9	0.292
Feb-18	28	5,635	895.8	4	8,246	1,310.9	8,388	1,334	32	0	47	48	583,511	92768	11	111189	53122	14	4	59.4%	81	0.59	0.1	54.5%	180217.6	0.296
Mar-18	31	5,497	874.0	7.7	11,891	1,890.5	10,801	1,717	28	0	61	55	589,008	93642	18	113080	54839	14	9	68.4%	99	0.56	0.2	54.7%	183300.9	0.301
Apr-18	30	6,058	963.1	7	8,483	1,348.6	11,430	1,817	32	0	45	61	595,066	94605	25	114428	56656	14	7	58.3%	85	0.72	0.3	54.7%	185855.2	0.306
May-18	31	5,962	947.8	4.2	8,381	1,332.5	11,886	1,890	31	0	43	61	601,028	95553	29	115761	58546	14	4	58.4%	75	0.82	0.3	54.8%	188183.7	0.313
Jun-18	30	5,214	828.9	6.1	7,808	1,241.4	11,101	1,765	28	0	41	59	606,242	96382	36	117002	60311	14	7	60.0%	76	0.78	0.4	54.8%	190468.4	0.318
Jul-18	31	5,576	886.5	3	8,066	1,282.3	10,884	1,730	29	0	41	56	611,818	97268	39	118284	62041	14	3	59.1%	69	0.81	0.4	54.9%	192616.8	0.324
Aug-18	31	5,113	812.9	0.9	8,091	1,286.4	0	0	26	0	41	0	616,931	98081	39	119571	62041	14	1	61.3%	63	0.00	0.4	54.9%	194566.9	0.320
Sep-18	30	4,864	773.4	0.4	7,491	1,190.9	14,490	2,304	26	0	40	77	621,795	98855	40	120762	64345	14	1	60.6%	60	1.29	0.4	55.0%	196356.7	0.329
Oct-18	31	4,342	690.3	0	7,483	1,189.6	10,774	1,713	22	0	38	55	626,137	99545	40	121951	66058	14	0	63.3%	55	1.01	0.4	55.1%	198056.3	0.335
Nov-18	30	3,913	622.1	0	6,157	978.8	10,989	1,747	21	0	33	58	630,050	100167	40	122930	67805	14	0	61.1%	48	1.22	0.4	55.1%	199494.3	0.342
Dec-18	31	4,083	649.1	0	5,750	914.1	10,951	1,741	21	0	29	56	634,133	100816	40	123844	69546	14	0	58.5%	45	1.26	0.4	55.1%	200886.9	0.348
Jan-19	31	4,280	680.5	0	6,005	954.6	8,604	1,368	22	0	31	44	638,414	101497	40	124799	70914	14	0	58.4%	47	0.94	0.4	55.1%	202343.1	0.352
Feb-19	28	4,262	677.6	0	5,615	892.7	6,154	978	24	0	32	35	642,676	102174	40	125692	71892	14	0	56.8%	50	0.71	0.4	55.2%	203735.0	0.355
Mar-19	31	4,481	712.3	0	5,074	806.7	6,051	962	23	0	26	31	647,156	102887	40	126498	72854	14	0	53.1%	43	0.73	0.4	55.1%	205065.8	0.357
Apr-19	30	4,248	675.4	0	4,874	775.0	5,732	911	23	0	26	30	651,405	103562	40	127273	73765	14	0	53.4%	42	0.72	0.4	55.1%	206337.7	0.359
May-19	31	4,273	679.3	0	5,224	830.6	5,087	809	22	0	27	26	655,677	104241	40	128104	74574	14	0	55.0%	43	0.61	0.4	55.1%	207668.4	0.361
Jun-19	30	4,039	642.1	0	5,036	800.6	18,069	2,873	21	0	27	96	659,716	104883	40	128904	77447	14	0	55.5%	42	2.27	0.4	55.1%	208941.8	0.373
Jul-19	31	4,679	743.9	0	7,488	1,190.4	17,977	2,858	24	0	38	92	664,396	105627	40	130095	80305	14	0	61.5%	56	1.65	0.4	55.2%	210681.3	0.383
Aug-19	31	5,689	904.4	0	9,463	1,504.5	14,372	2,285	29	0	49	74	670,084	106532	40	131599	82590	14	0	62.5%	70	1.06	0.4	55.3%	212853.7	0.390
Sep-19	30	5,012	796.9	0	7,524	1,196.1	12,786	2,033	27	0	40	68	675,097	107329	40	132795	84623	14	0	60.0%	59	1.15	0.4	55.3%	214637.6	0.396
Oct-19	31	5,638	896.3	0	9,431	1,499.4	10,242	1,628	29	0	48	53	680,734	108225	40	134295	86251	14	0	62.6						

### East Manson Unit No. 5 - Rate Time



### East Manson Unit No. 5 - Rate Cum



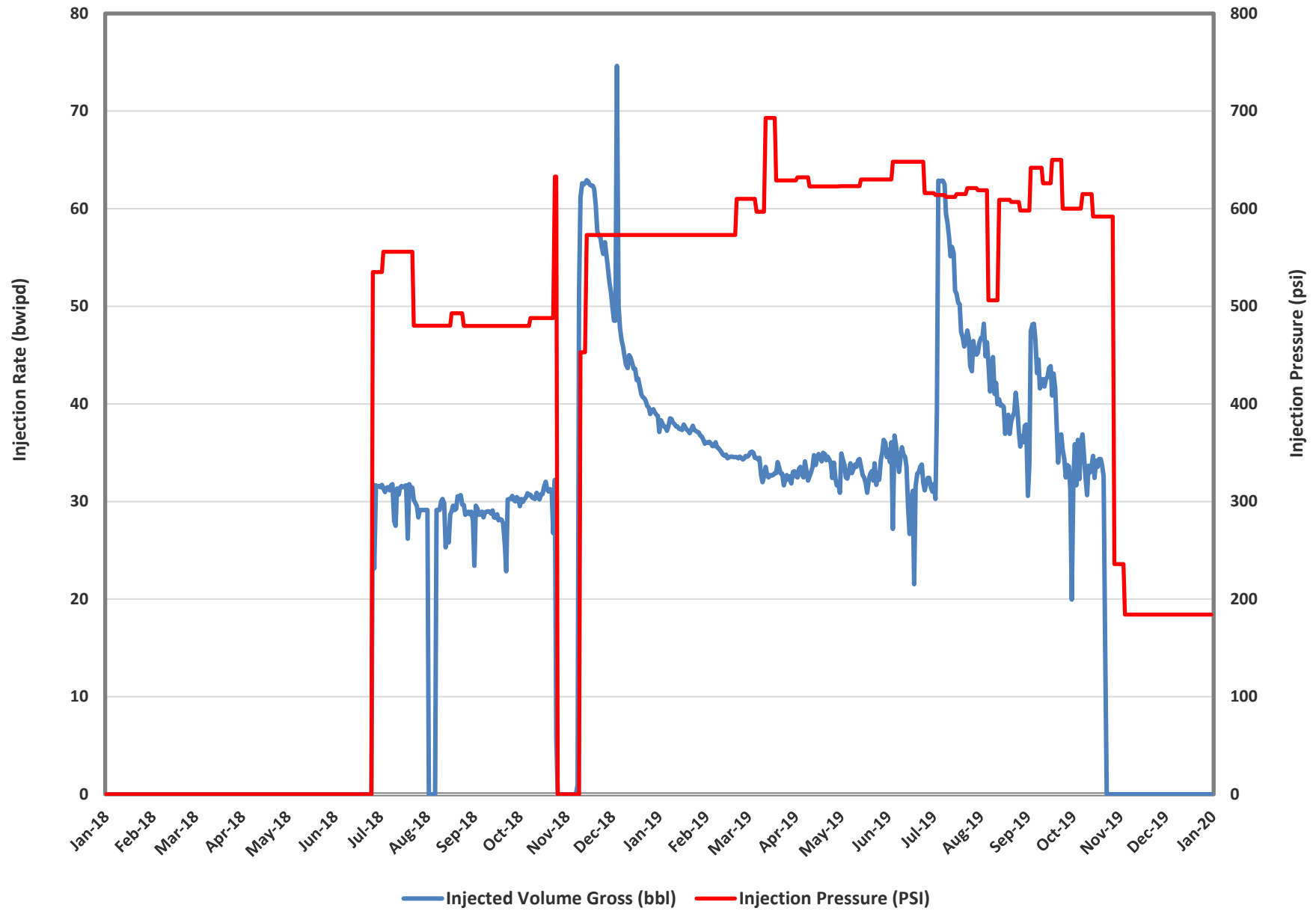


# East Manson Unit No. 5 - Injection Parameters

Month	Oil Rate (m3/d)	Gas Rate (e3m3/d)	Water Rate (m3/d)	Water Inj Rate (m3/d)	Cum Oil (m3)	Cum Gas (e3m3)	Cum Water (m3)	Cum Inj Water (m3)	GOR (m3/m3)	WOR (m3/m3)
Jan-19	22.0	0.0	30.8	44.1	101,497	39.8	124,799	70913.8	0	1.40
Feb-19	24.2	0.0	31.9	34.9	102,174	39.8	125,692	71892.3	0	1.32
Mar-19	23.0	0.0	26.0	31.0	102,887	39.8	126,498	72854.2	0	1.13
Apr-19	22.5	0.0	25.8	30.4	103,562	39.8	127,273	73765.4	0	1.15
May-19	21.9	0.0	26.8	26.1	104,241	39.8	128,104	74574.2	0	1.22
Jun-19	21.4	0.0	26.7	95.8	104,883	39.8	128,904	77446.9	0	1.25
Jul-19	24.0	0.0	38.4	92.2	105,627	39.8	130,095	80305.0	0	1.60
Aug-19	29.2	0.0	48.5	73.7	106,532	39.8	131,599	82590.0	0	1.66
Sep-19	26.6	0.0	39.9	67.8	107,329	39.8	132,795	84622.8	0	1.50
Oct-19	28.9	0.0	48.4	52.5	108,225	39.8	134,295	86251.1	0	1.67
Nov-19	29.4	0.0	41.8	48.6	109,106	39.8	135,550	87710.1	0	1.42
Dec-19	29.6	0.0	38.7	45.6	110,023	39.8	136,751	89124.6	0	1.31

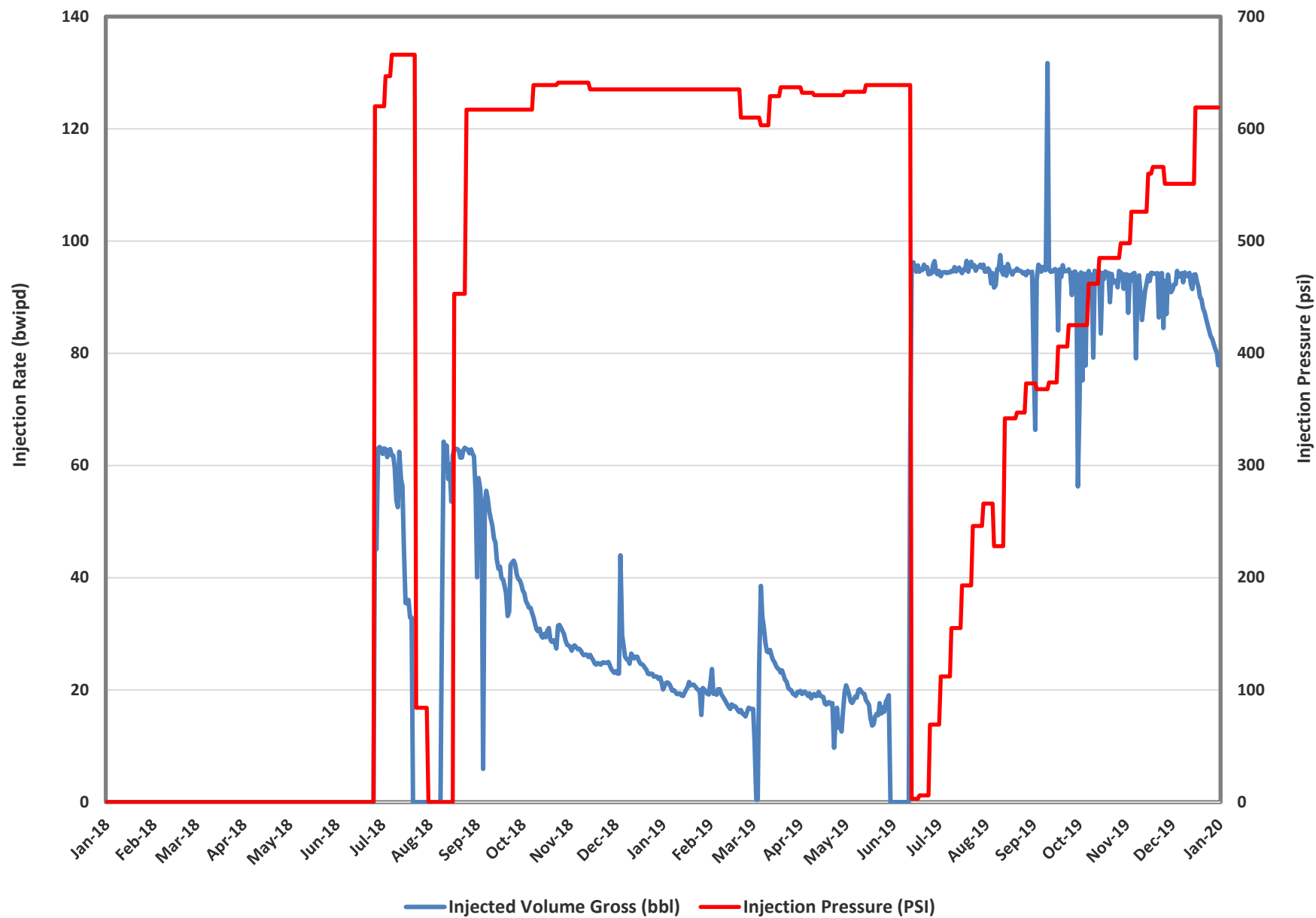
Month	00/10-07 Water Inj Press (psi)	02/03-15 Water Inj Press (psi)	00/05-16 Water Inj Press (psi)	00/11-16 Water Inj Press (psi)	00/14-16 Water Inj Press (psi)	00/04-17 Water Inj Press (psi)	00/06-17 Water Inj Press (psi)	00/11-17 Water Inj Press (psi)
Jan-19	573	635	638	459	637	529	629	639
Feb-19	584	628	625	698	641	560	633	651
Mar-19	634	624	526	1046	669	633	635	701
Apr-19	626	631	634	624	632	626	628	645
May-19	627	636	640	638	418	631	633	642
Jun-19	640	271	634	640	200	385	634	576
Jul-19	616	179	627	420	604	345	619	525
Aug-19	585	310	532	586	588	503	580	590
Sep-19	628	392	639	637	639	617	631	639
Oct-19	553	470	609	609	610	599	602	610
Nov-19	195	541	611	608	612	600	604	612
Dec-19		586	626	626	633	620	620	628

00/10-07-013-28W1 Rate vs Pressure

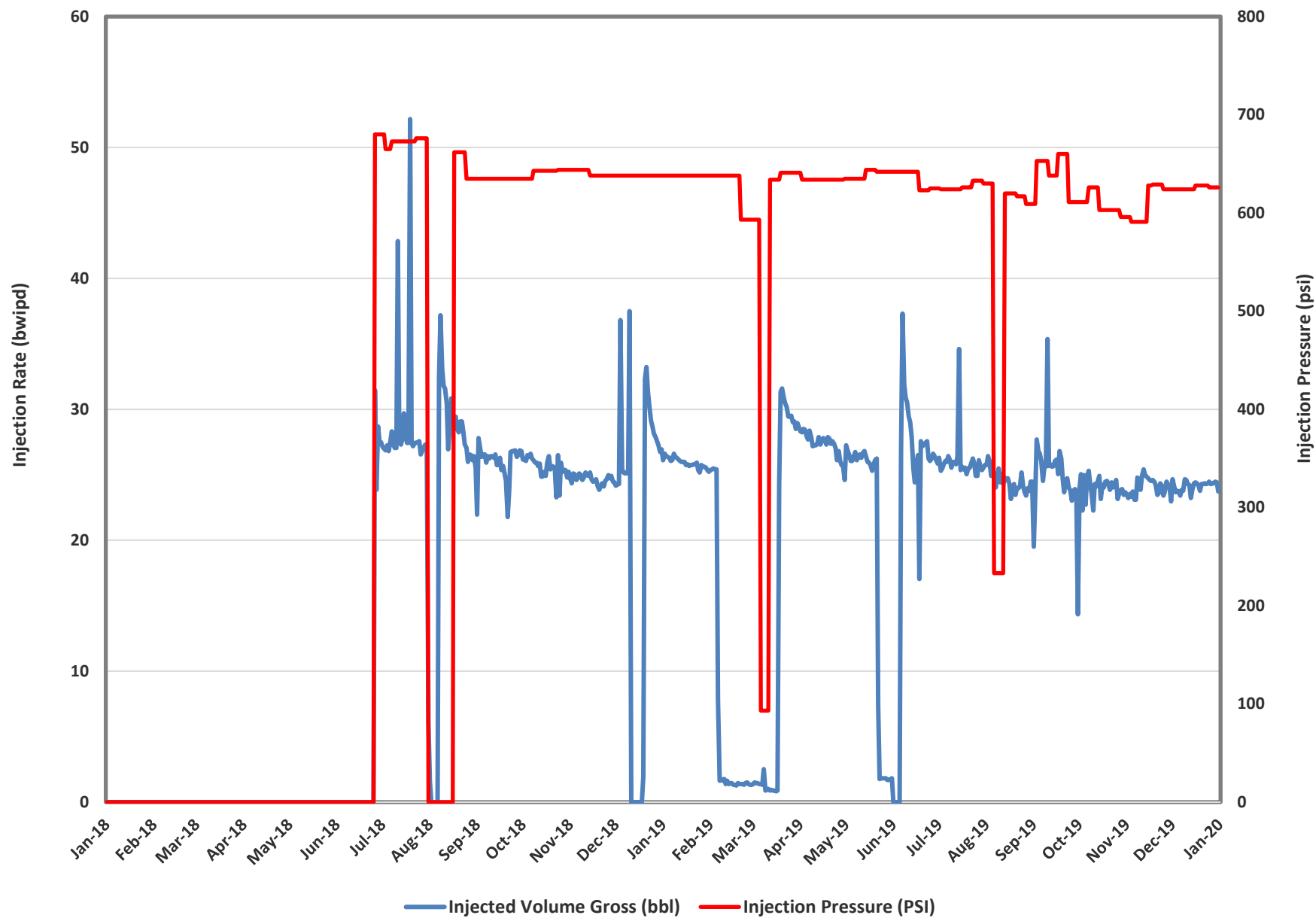




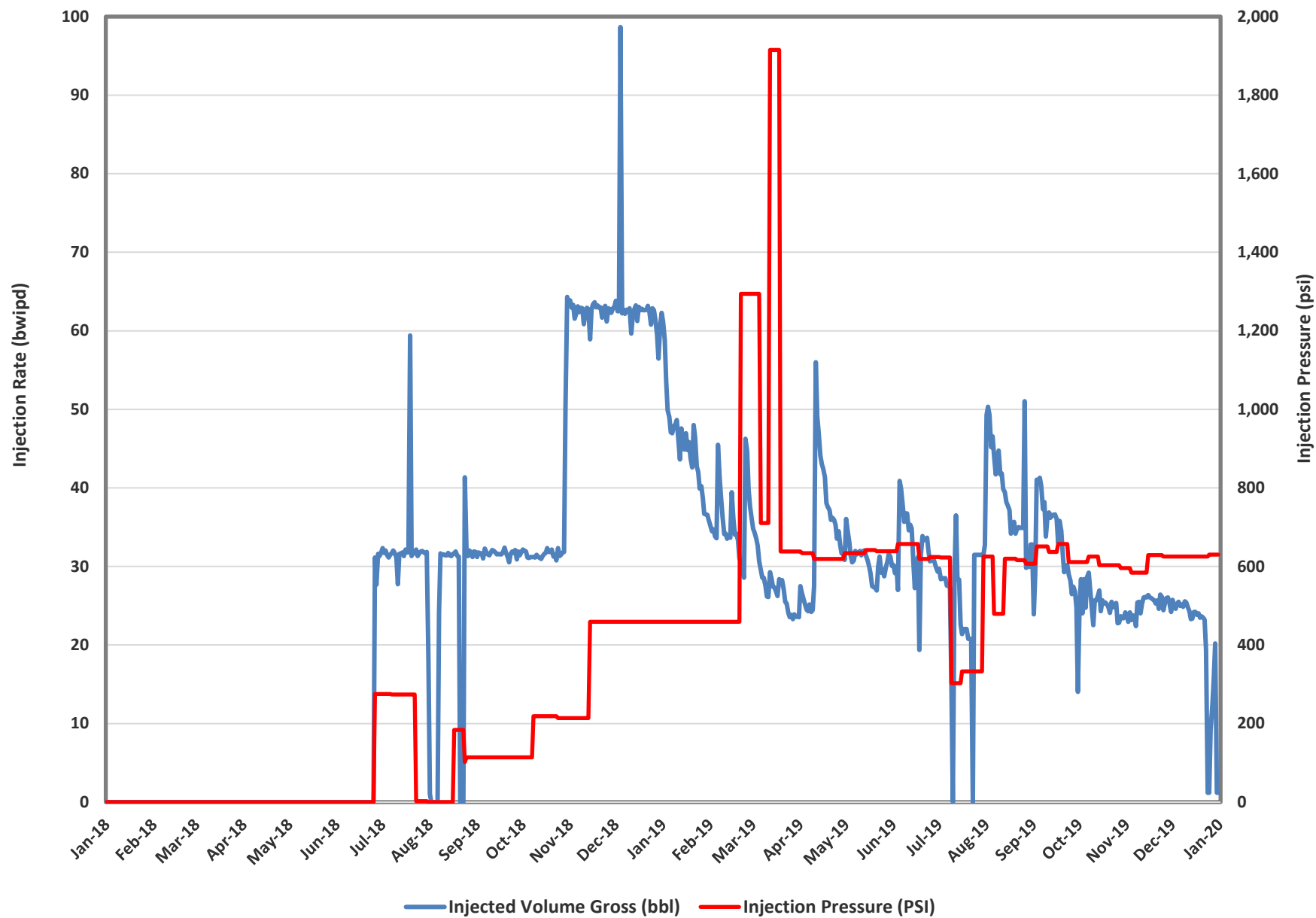
02/03-15-013-28W1 Rate vs Pressure



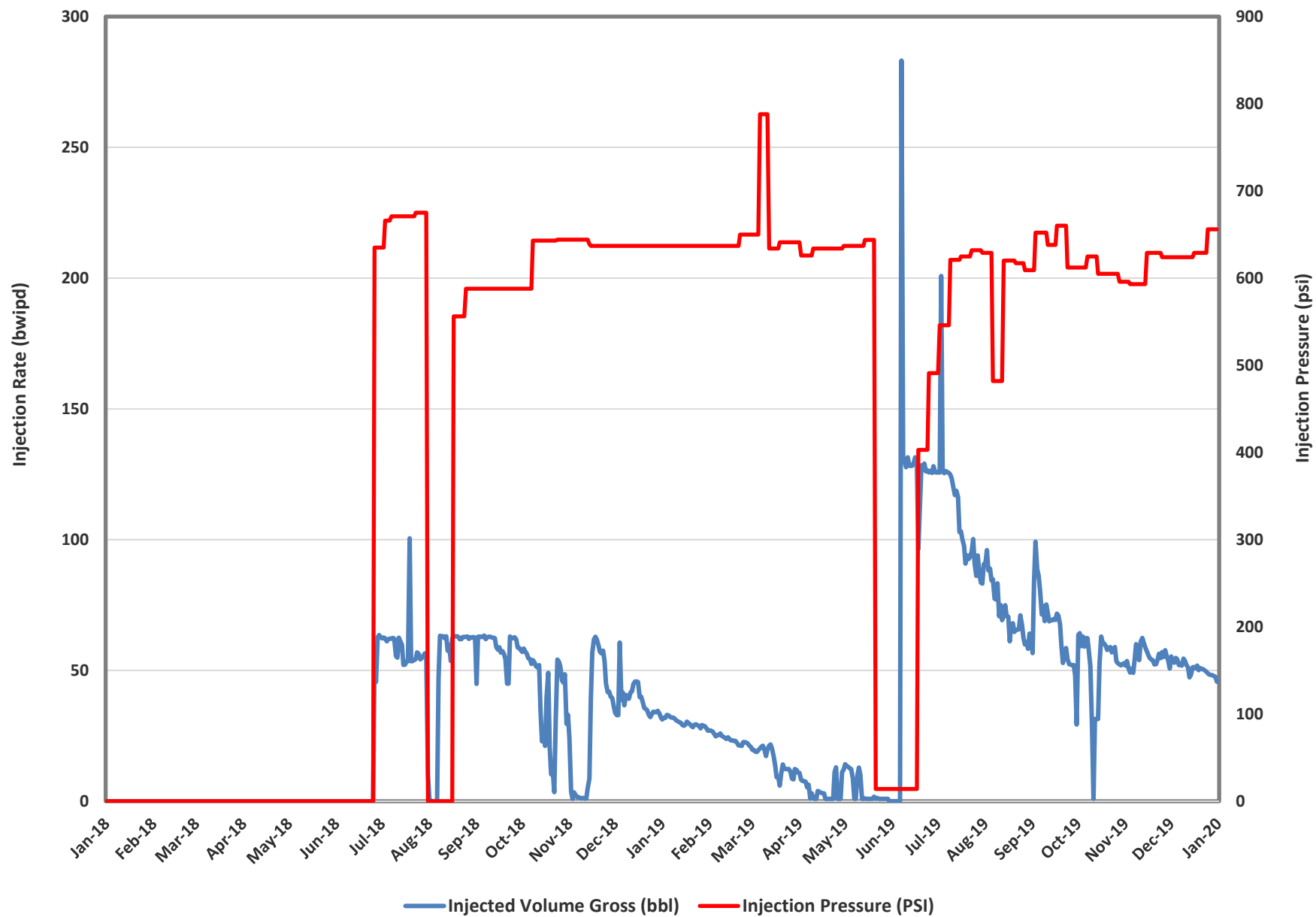
00/05-16-013-28W1 Rate vs Pressure



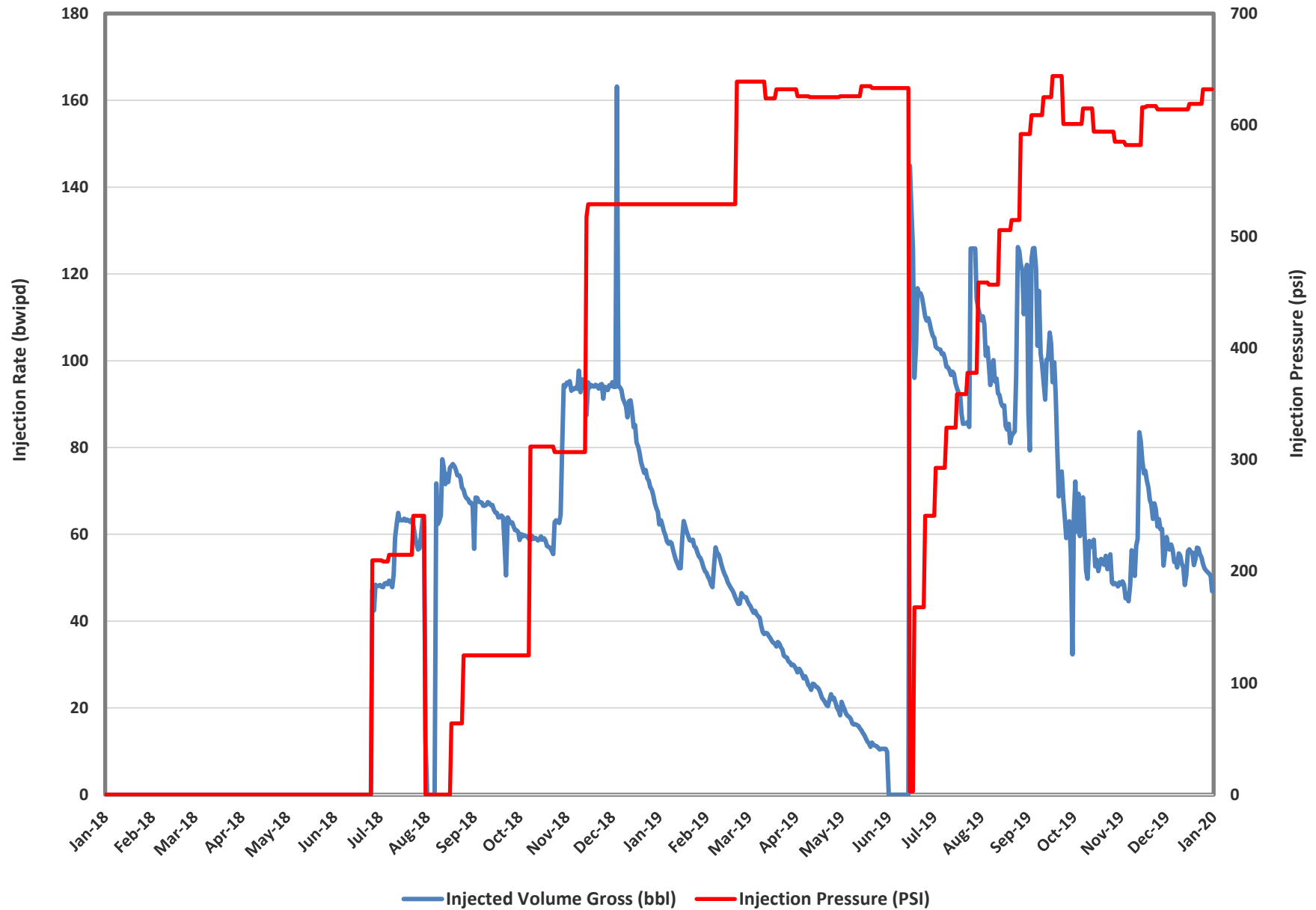
00/11-16-013-28W1 Rate vs Pressure



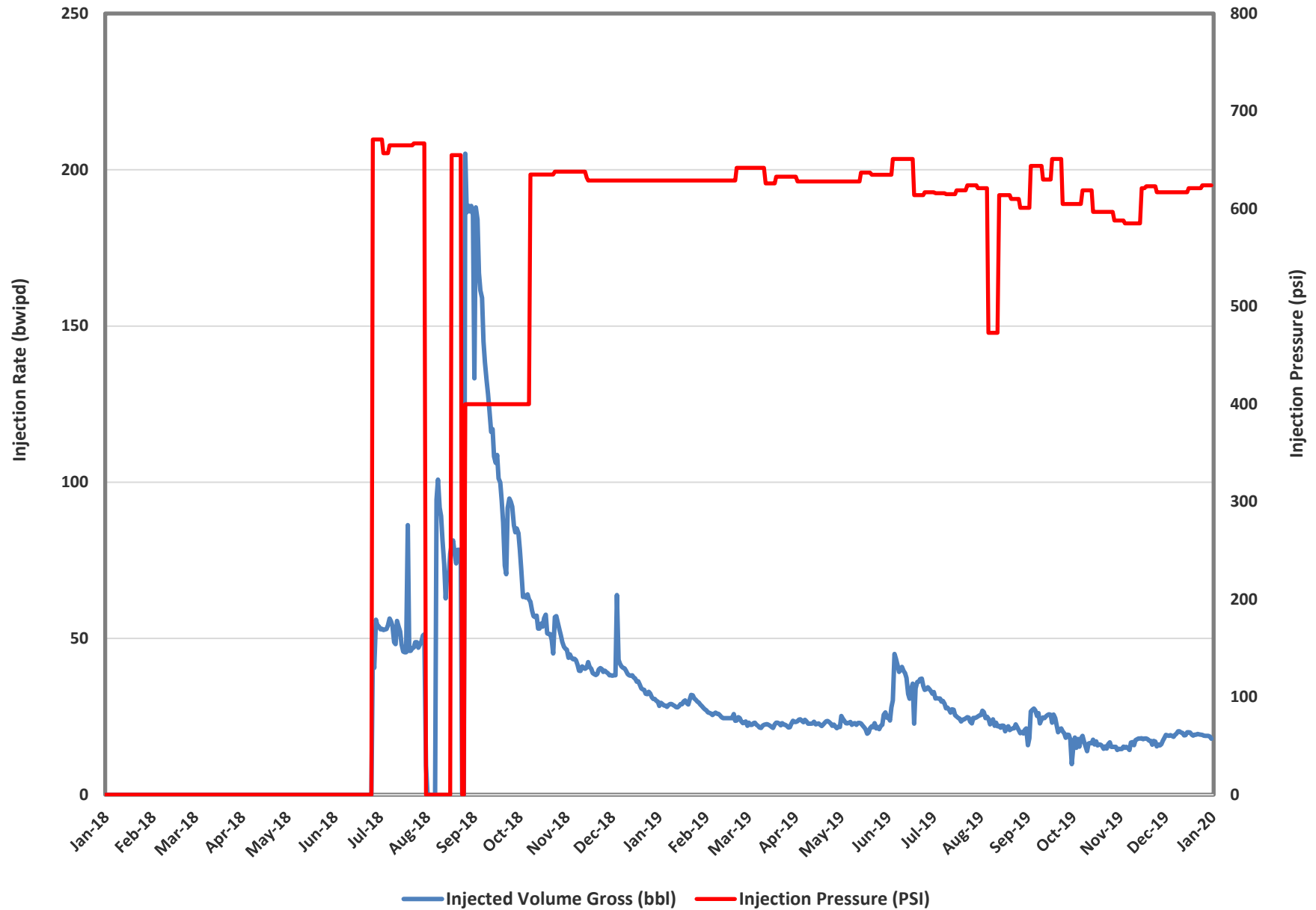
00/14-16-013-28W1 Rate vs Pressure



00/04-17-013-28W1 Rate vs Pressure



00/06-17-013-28W1 Rate vs Pressure



00/11-17-013-28W1 Rate vs Pressure

