

EWART UNIT NO. 3
WATERFLOOD EOR PROJECT

ANNUAL REPORT FOR 2013

March 21, 2014

Tundra Oil and Gas Partnership

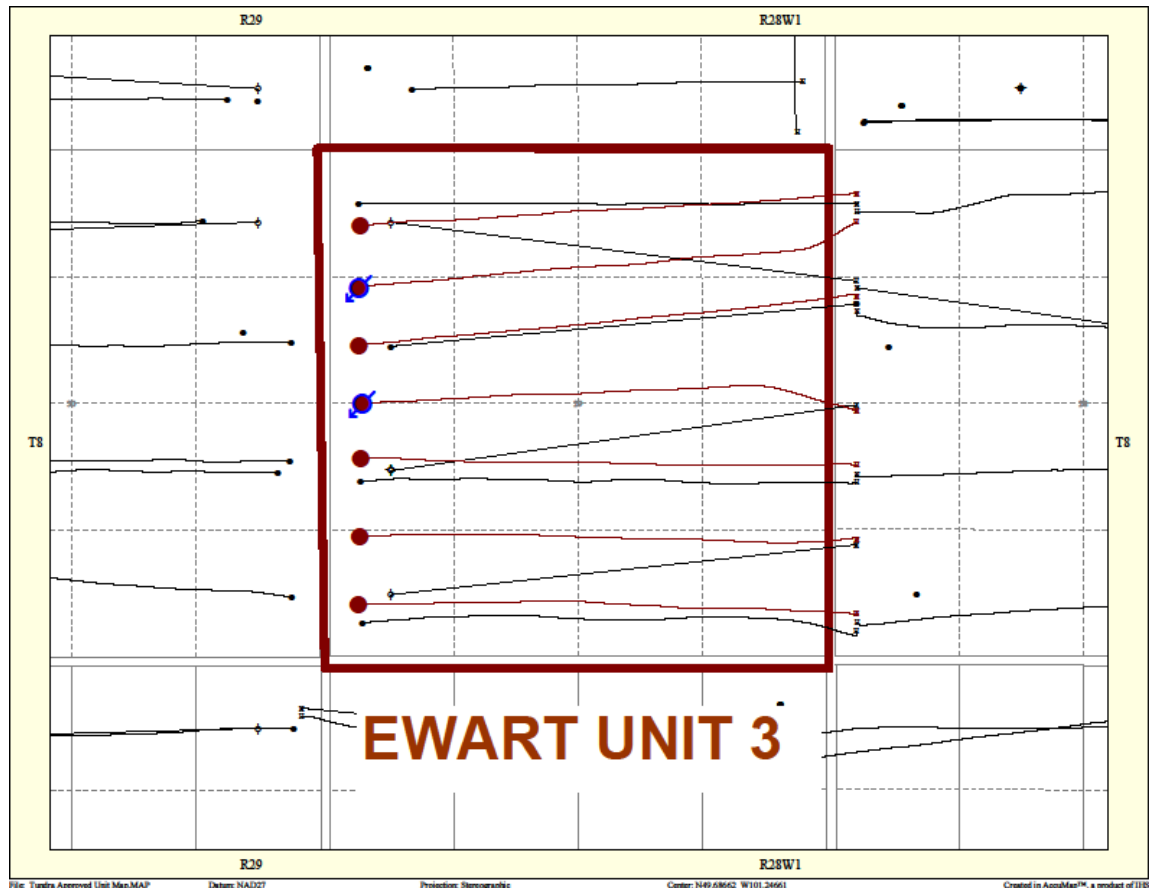
Table of Contents

Introduction	3.
Discussion	3.
Production History	3.
Waterflood Development Plan	5.
Waterflood EOR Operating Strategy and Performance	6.
Water Source and Quality	6.
Injection Wellhead Pressures	6.
Reservoir Pressure	6.
Well Servicing	6.
Waterflood Performance Discussion	6.
List of Appendices	7.
Appendix A: Ewart Unit No. 3 Well Name and Status Table	
Appendix B: Ewart Unit No. 3 Injection Pattern Summary	
Appendix C: Ewart Unit No. 3 Reservoir Pressure Summary	
Appendix D: Injector Pattern Production/Injection Rates, Cumulative and VRR Plots and Tables for the following injectors:	
102/04-29-008-28W1	
102/12-29-008-28W1	
103/12-29-008-28W1	

INTRODUCTION

Ewart Unit No. 3 was approved on August 1, 2013 with Tundra Oil and Gas (Tundra) as Operator. The Unit area contains 5 producing wells in 16 LSDs in Township 8 Range 28 W1 as shown in the figure below.

Figure 1: Ewart Unit No. 3 Area Outline



In accordance with Section 73 of the Manitoba Drilling and Production Regulation, Tundra hereby submits the following 2013 Annual Progress Report for Ewart Unit No. 3.

DISCUSSION

Production History

For the wells included in Ewart Unit No. 3, production started in December 2008 with the 00/04-29-008-28W1 well. Average oil production peaked at 9.2 m³/d per well in March

2012. This production was coming from 6 wells and totaled 55.3 m³/d for the whole Unit. In December 2013, the Unit was producing 9.77 m³/d of oil and 21.52 m³/d of water. The rates and WOR are presented in Figure 2.

Figure 2: Ewart Unit No. 3 Production/Injection Rates and WOR vs Time

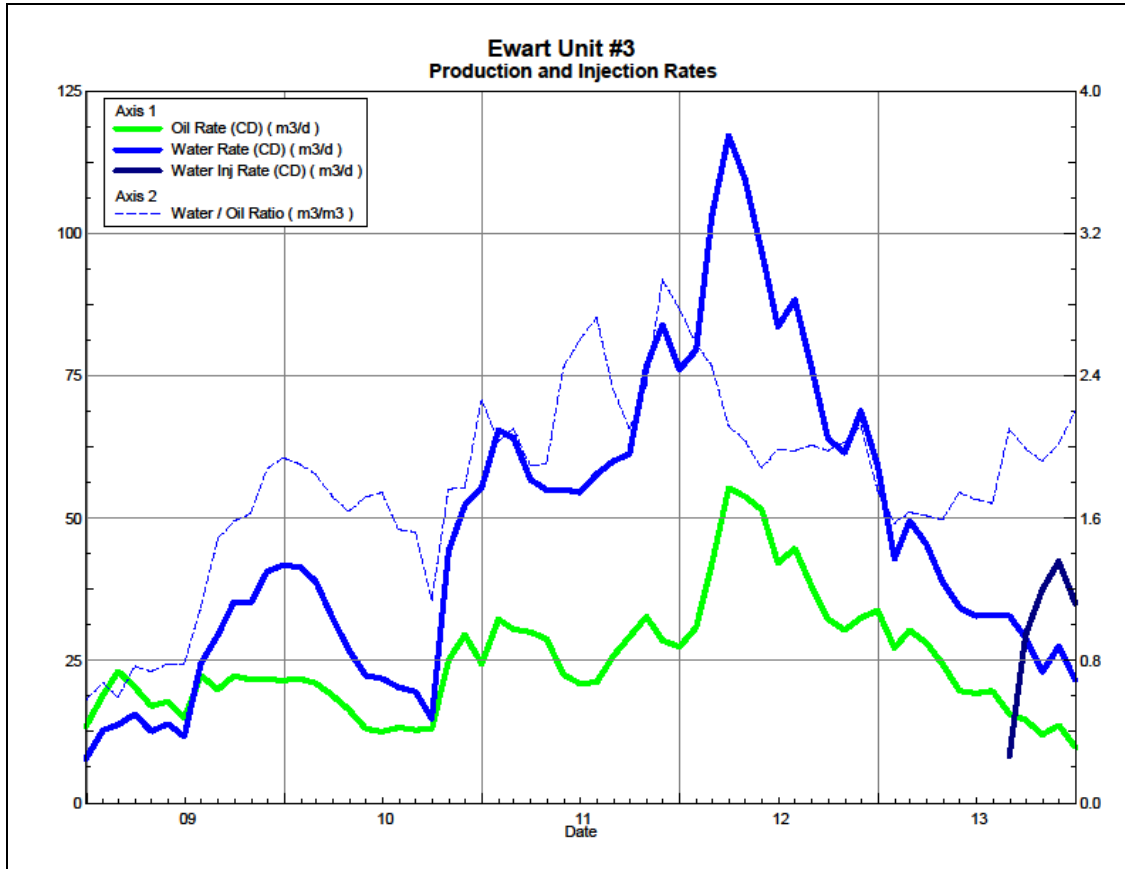
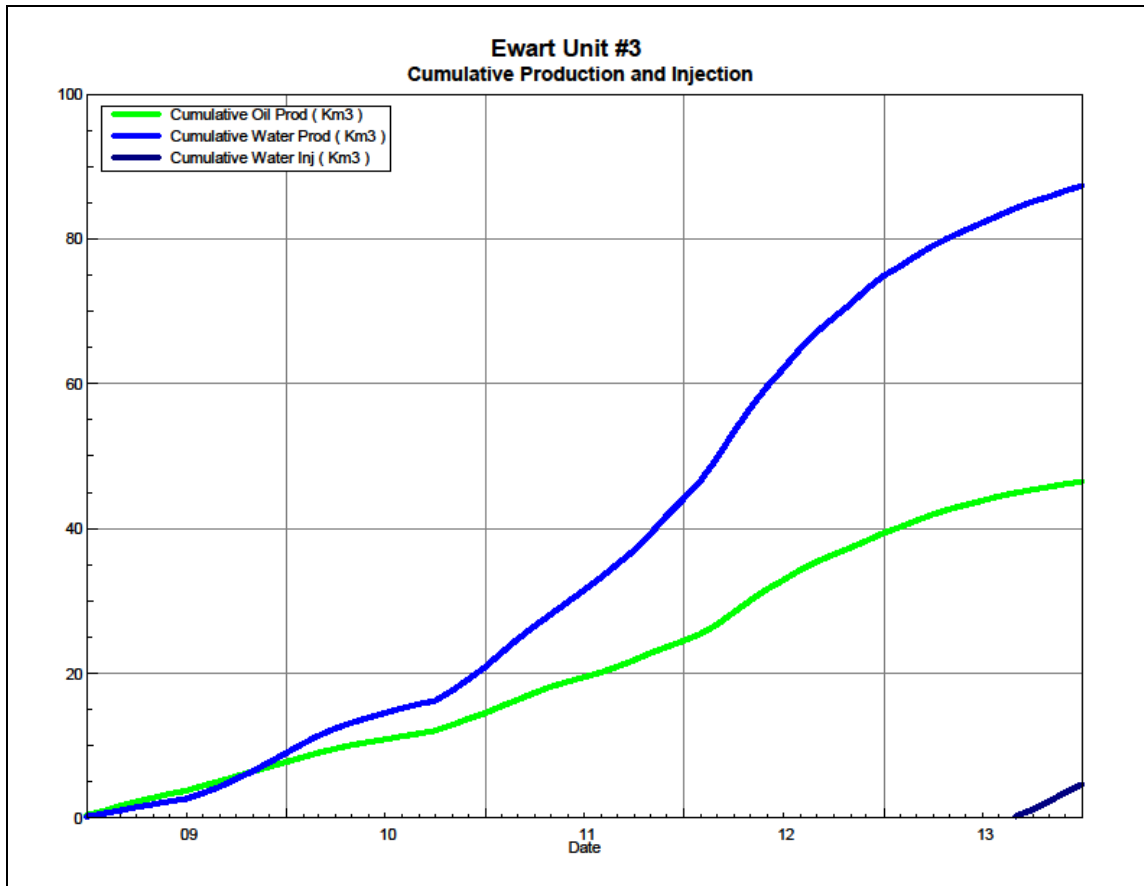


Figure 3 shows the cumulative production for Ewart Unit No. 3 to the end of December 2013 as 46.46 E³m³ of oil, and 87.34 E³m³ of water, representing a 7.7% recovery factor of the OOIP. The cumulative water injected is 4.66 E³m³. The cumulative volume of oil, and water produced and fluid injected for each injection pattern and for the whole project for each injection well is presented in Appendix D.

Figure 3: Ewart Unit No. 3 Cumulative Oil, Water and Water Injected vs Time



Waterflood Development Plan

Ewart Unit No. 3 Waterflood (WF) Development Plan

Ewart Unit No. 3 is still in the development phase at the end of 2013. The three (3) proposed horizontal injection wells were drilled in 2011 between the existing horizontal producing wells, completing an effective 20 acre line drive waterflood pattern. All horizontal wells are fracture stimulated to improve the injection rates. In 2012, the proposed injectors were put on production and in 2013, the 02/12-29 and 03/12-29 wells were converted to injectors. Tundra is planning to convert the 02/04-29 producer to an injector in Q4 2014.

Production performance by injector pattern are summarized in Appendix B.

Any future revisions to the waterflood development or surveillance plan would be based on new production or performance response data, technical studies, or observed reservoir behavior and reserves recovery interpretations.

Waterflood EOR Operating Strategy and Performance

Water Source and Quality

The injection water for Ewart Unit No. 3 will be sourced from the 16-32-007-29W1 well (Lodgepole formation). The water is treated at the 03-04-008-29W1 battery where it is filtered to 0.5 microns and has scale inhibitor added. The injection water is then distributed to the injectors through the dedicated infrastructure system.

Injection Wellhead Pressures

Injection started in this Unit in August 2013. Since injection in this Unit is still in the early stages, the injectors are still building up to a target injection pressure of 6300 kPaa.

Reservoir Pressure

Where practical, Tundra is committed to collecting pressure data from newly drilled injection wells. For Ewart Unit No. 3, pressure data is currently available for the 02/12-29 and 03/12-29-008-28W1 locations. A summary table is presented in Appendix C. Pressures are corrected to a common datum of -450 m SS for comparison with other units in the area.

Well Servicing

Table 1 lists the maintenance that was required in Ewart Unit No. 3 in 2013.

Table 1: Service and Maintenance in Ewart Unit No. 3

02/12-29-008-28W1/0	WIW Conversion	7/29/2013
03/12-29-008-28W1/0	WIW Conversion	8/11/2013

Waterflood Performance Discussion

At the end of 2013, Ewart Unit No. 3 waterflood area had 2 injection patterns in place. Water injection started in November 2013. Tundra is planning to produce the 02/04-29 producer until the latter part of 2014 and then convert it to an injector.

A summary table of the injector pattern(s) is presented in Appendix B. Plots and tables of the production and injection data along with the VRR information are presented in Appendix D for each of the injector pattern(s).

List of Appendices

Appendix A: Ewart Unit No. 3 Well Name and Status Table

Appendix B: Ewart Unit No. 3 Injection Pattern Summary

Appendix C: Ewart Unit No. 3 Reservoir Pressure Summary

Appendix D: Injector Pattern Production/Injection Rates, Cumulative and VRR Plots and
Tables for the following injectors:

102/04-29-008-28W1

102/12-29-008-28W1

103/12-29-008-28W1

Appendix A

UWI	Surface Location	Well Status
00/04-29-008-28W1/0	04-28-008-28W1	Capable of OIL Prod
02/04-29-008-28W1/0	03/04-28-008-28W1	Capable of OIL Prod
02/05-29-008-28W1/0	02/05-28-008-28W1	Capable of OIL Prod
00/12-29-008-28W1/0	12-28-008-28W1	Capable of OIL Prod
02/12-29-008-28W1/0	02/13-28-008-28W1	WTR Injection
03/12-29-008-28W1/0	03/05-28-008-28W1	WTR Injection
00/13-29-008-28W1/0	13-28-008-28W1	Capable of OIL Prod

Appendix B

Ewart Unit No. 3 Injection Pattern Summary as of December 2013

Pattern Name	Injector BH Location (008-28W1)	Injector Surf. Location (008-28W1)	Status	No. of Supported Wells	Supported Wells (008-28W1)	Allocation Factor	Pattern Prod Start Month	Inj Start Month	Oil Rate (m³/d)	Water Rate (m³/d)	WOR (m³/m³)	Water Injection (m³/d)	Cum Oil (E³m³)	Cum Water (E³m³)	Cum Inj Water (E³m³)	Monthly VRR	Cum VRR
02/04-29-008-28W1 Injector	02/04-29	03/04-28	Capable of Oil Production	2	04-29, 02/05-29	0.5	Dec 2008	-	5.3	9.8	1.86	-	19.9	23.5	-	-	-
02/12-29-008-28W1 Injector	02/12-29	02/13-28	Water Injection	2	12-29, 13-29	0.5	Jul 2009	Aug 2013	1.3	2.6	1.93	21.0	10.1	25.2	2.7	5.2	0.08
03/12-29-008-28W1 Injector	03/12-29	03/05-28	Water Injection	2	02/05-29, 12-29	0.5	Sep 2010	Sep 2013	2.1	7.7	3.75	14.0	10.4	25.7	1.9	1.4	0.05

APPENDIX C

Ewart Unit No. 3 - Pressure Summary

Location	Test Date	Final Pressure (kPaa)	MPP (mTVD)	KB	Datum Depth	Gradient	Pressure @ -450 masl
102/12-29-008-28W1/00	Dec 17, 2011 - Oct 9, 2012	2681.6	889.7	501.1	-450	8.25	3189
103/12-29-008-28W1/00	Dec 9, 2011 - Jan 13, 2012	6119.2	890.7	499.3	-450	8.25	6603

Appendix D
Rates and VRR
Plots and Tables

Oil Formation Vol Factor : 1.07100 m3/m3

Water Formation Vol Factor : 1.00150 m3/m3

Water / Oil Ratio : 1.86 m3/m3

Pattern: 02/04-29-008-28Inj Set: EwartUnit#3

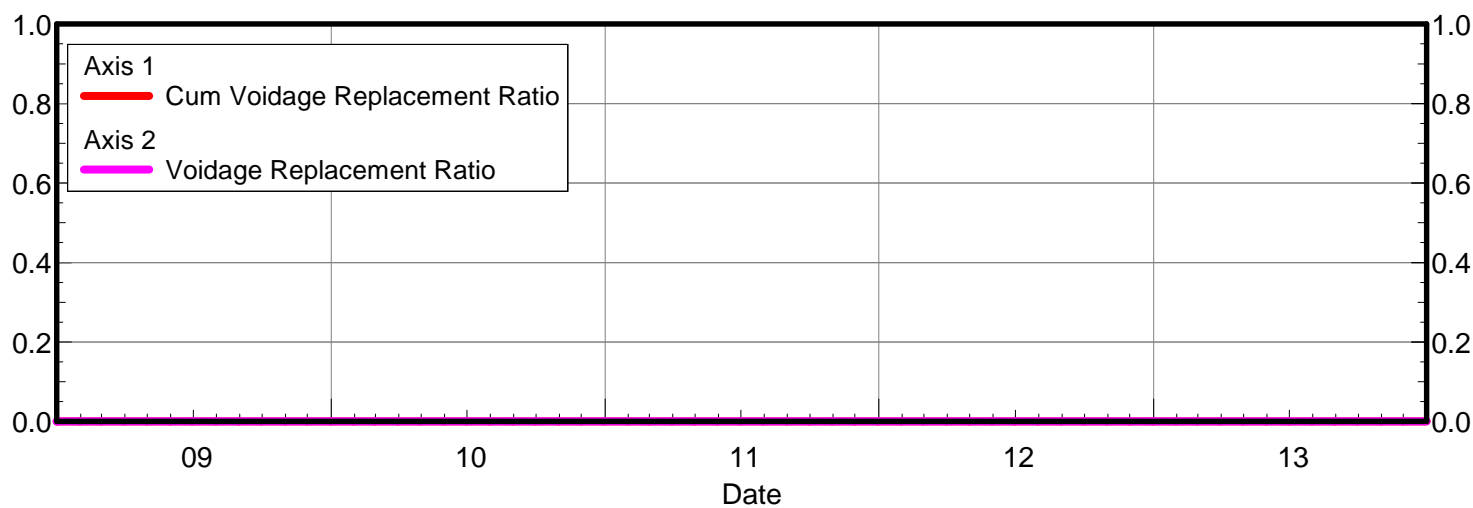
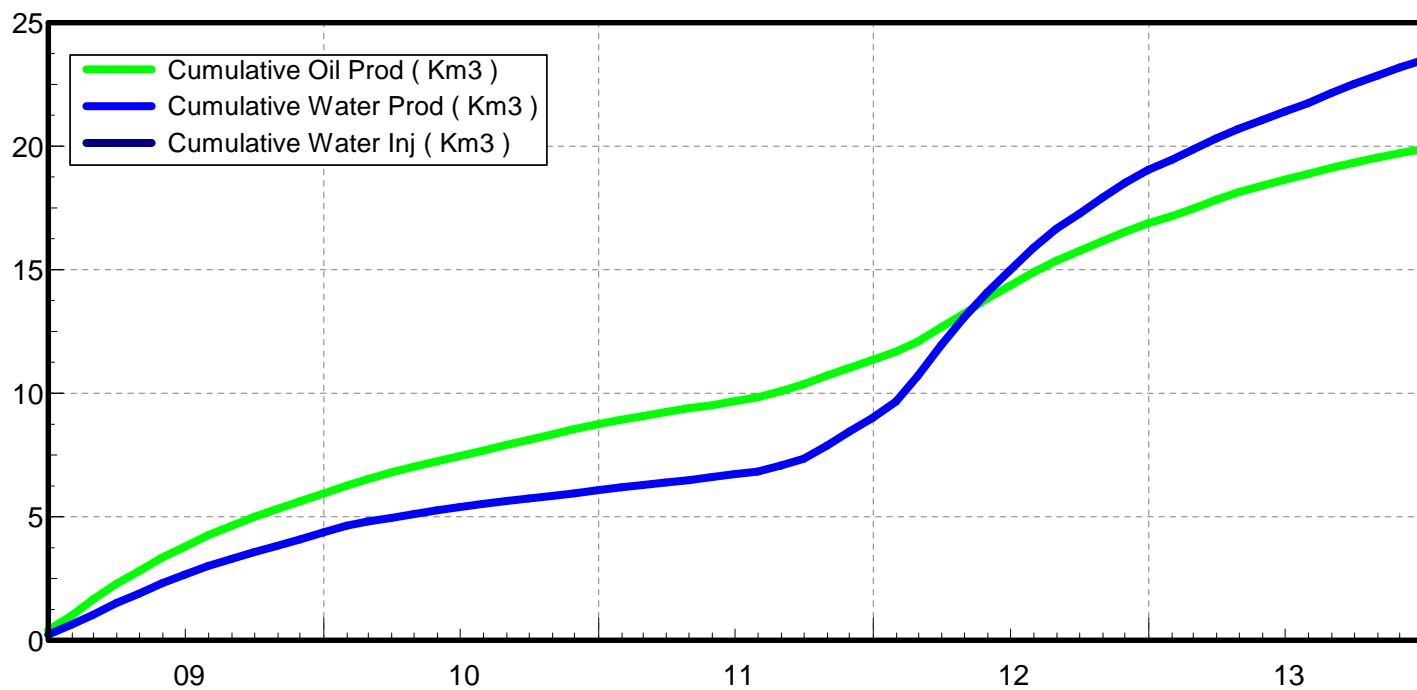
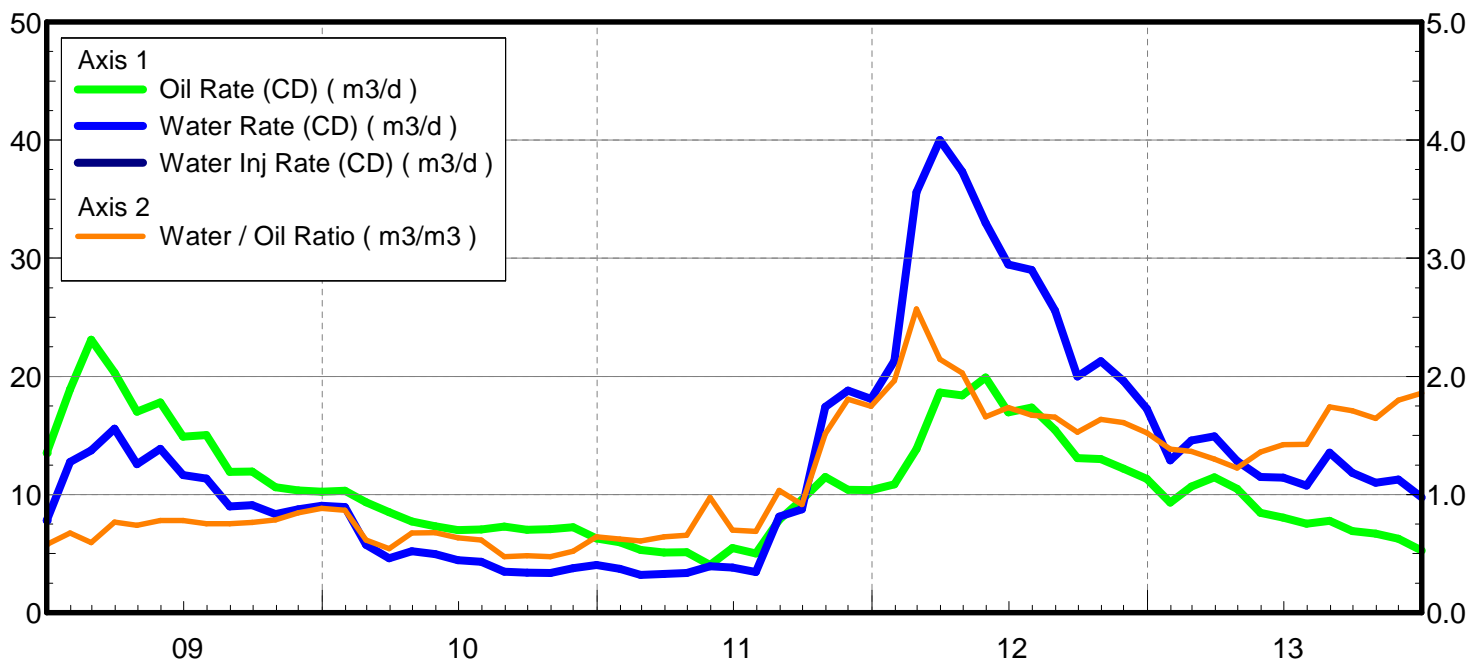
March 23, 2014

Operator: Tundra_O&G_Prtshp

Oil Rate (CD) : 5.25 m3/d

Water Rate (CD) : 9.75 m3/d

Water Inj Rate (CD) : * m3/d



Date	Oil Rate (CD) m3/d	Water Rate (CD) m3/d	Water Oil Ratio m3/m3	Water Inj Rate (CD) m3/d	Cum Oil Prod Km3	Cum Water Prod Km3	Cum Water Inj Km3	Voidage Replacement Ratio	Cum Voidage Replacemt Ratio
12/31/2008	13.51	7.79	0.58		0.42	0.24	0.00	0.000	0.000
1/31/2009	18.90	12.76	0.68		1.00	0.64	0.00	0.000	0.000
2/28/2009	23.10	13.74	0.59		1.65	1.02	0.00	0.000	0.000
3/31/2009	20.30	15.58	0.77		2.28	1.50	0.00	0.000	0.000
4/30/2009	17.00	12.56	0.74		2.79	1.88	0.00	0.000	0.000
5/31/2009	17.79	13.88	0.78		3.34	2.31	0.00	0.000	0.000
6/30/2009	14.91	11.64	0.78		3.79	2.66	0.00	0.000	0.000
7/31/2009	15.03	11.34	0.75		4.26	3.01	0.00	0.000	0.000
8/31/2009	11.93	9.00	0.75		4.63	3.29	0.00	0.000	0.000
9/30/2009	11.94	9.11	0.76		4.98	3.56	0.00	0.000	0.000
10/31/2009	10.61	8.34	0.79		5.31	3.82	0.00	0.000	0.000
11/30/2009	10.36	8.76	0.85		5.62	4.09	0.00	0.000	0.000
12/31/2009	10.24	9.05	0.88		5.94	4.37	0.00	0.000	0.000
1/31/2010	10.32	8.95	0.87		6.26	4.64	0.00	0.000	0.000
2/28/2010	9.34	5.75	0.62		6.52	4.80	0.00	0.000	0.000
3/31/2010	8.49	4.61	0.54		6.79	4.95	0.00	0.000	0.000
4/30/2010	7.72	5.21	0.68		7.02	5.10	0.00	0.000	0.000
5/31/2010	7.32	4.96	0.68		7.24	5.26	0.00	0.000	0.000
6/30/2010	6.98	4.44	0.64		7.45	5.39	0.00	0.000	0.000
7/31/2010	7.03	4.32	0.61		7.67	5.53	0.00	0.000	0.000
8/31/2010	7.30	3.46	0.47		7.90	5.63	0.00	0.000	0.000
9/30/2010	7.01	3.38	0.48		8.11	5.73	0.00	0.000	0.000
10/31/2010	7.08	3.35	0.47		8.33	5.84	0.00	0.000	0.000
11/30/2010	7.25	3.76	0.52		8.54	5.95	0.00	0.000	0.000
12/31/2010	6.29	4.05	0.64		8.74	6.08	0.00	0.000	0.000
1/31/2011	5.96	3.71	0.62		8.92	6.19	0.00	0.000	0.000
2/28/2011	5.30	3.21	0.61		9.07	6.28	0.00	0.000	0.000
3/31/2011	5.09	3.28	0.64		9.23	6.38	0.00	0.000	0.000
4/30/2011	5.13	3.36	0.65		9.38	6.48	0.00	0.000	0.000
5/31/2011	4.04	3.94	0.98		9.51	6.61	0.00	0.000	0.000
6/30/2011	5.47	3.82	0.70		9.67	6.72	0.00	0.000	0.000
7/31/2011	5.01	3.45	0.69		9.83	6.83	0.00	0.000	0.000
8/31/2011	7.86	8.12	1.03		10.07	7.08	0.00	0.000	0.000
9/30/2011	9.57	8.76	0.92		10.36	7.34	0.00	0.000	0.000
10/31/2011	11.49	17.41	1.51		10.72	7.88	0.00	0.000	0.000
11/30/2011	10.40	18.79	1.81		11.03	8.44	0.00	0.000	0.000
12/31/2011	10.36	18.09	1.75		11.35	9.01	0.00	0.000	0.000
1/31/2012	10.86	21.31	1.96		11.69	9.67	0.00	0.000	0.000
2/29/2012	13.84	35.58	2.57		12.09	10.70	0.00	0.000	0.000
3/31/2012	18.64	40.02	2.15		12.67	11.94	0.00	0.000	0.000
4/30/2012	18.40	37.32	2.03		13.22	13.06	0.00	0.000	0.000
5/31/2012	19.90	32.98	1.66		13.83	14.08	0.00	0.000	0.000
6/30/2012	16.97	29.47	1.74		14.34	14.96	0.00	0.000	0.000
7/31/2012	17.37	29.02	1.67		14.88	15.86	0.00	0.000	0.000
8/31/2012	15.46	25.56	1.65		15.36	16.66	0.00	0.000	0.000
9/30/2012	13.08	19.98	1.53		15.75	17.26	0.00	0.000	0.000
10/31/2012	13.01	21.30	1.64		16.16	17.92	0.00	0.000	0.000
11/30/2012	12.18	19.61	1.61		16.52	18.50	0.00	0.000	0.000

Date	Oil Rate (CD) m3/d	Water Rate (CD) m3/d	Water Oil Ratio m3/m3	Water Inj Rate (CD) m3/d	Cum Oil Prod Km3	Cum Water Prod Km3	Cum Water Inj Km3	Voidage Replacement Ratio	Cum Voidage Replacemt Ratio
12/31/2012	11.33	17.26	1.52		16.87	19.04	0.00	0.000	0.000
1/31/2013	9.32	12.90	1.38		17.16	19.44	0.00	0.000	0.000
2/28/2013	10.68	14.58	1.36		17.46	19.85	0.00	0.000	0.000
3/31/2013	11.47	14.92	1.30		17.82	20.31	0.00	0.000	0.000
4/30/2013	10.48	12.83	1.22		18.13	20.70	0.00	0.000	0.000
5/31/2013	8.46	11.49	1.36		18.39	21.05	0.00	0.000	0.000
6/30/2013	8.04	11.44	1.42		18.64	21.39	0.00	0.000	0.000
7/31/2013	7.54	10.75	1.43		18.87	21.73	0.00	0.000	0.000
8/31/2013	7.77	13.54	1.74		19.11	22.15	0.00	0.000	0.000
9/30/2013	6.92	11.82	1.71		19.32	22.50	0.00	0.000	0.000
10/31/2013	6.69	11.00	1.64		19.52	22.84	0.00	0.000	0.000
11/30/2013	6.26	11.26	1.80		19.71	23.18	0.00	0.000	0.000
12/31/2013	5.25	9.75	1.86		19.87	23.48	0.00	0.000	0.000

Oil Formation Vol Factor : 1.07100 m3/m3

Water Formation Vol Factor : 1.00150 m3/m3

Water / Oil Ratio : 1.93 m3/m3

Pattern: 02/12-29-008-28Inj Set: EwartUnit#3

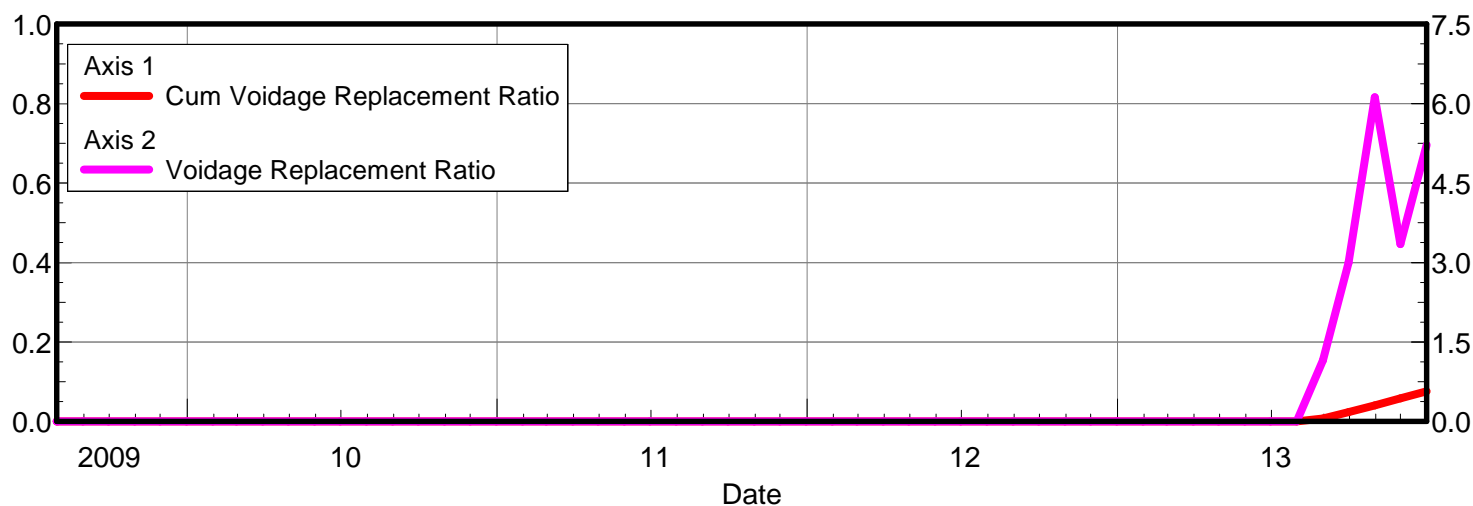
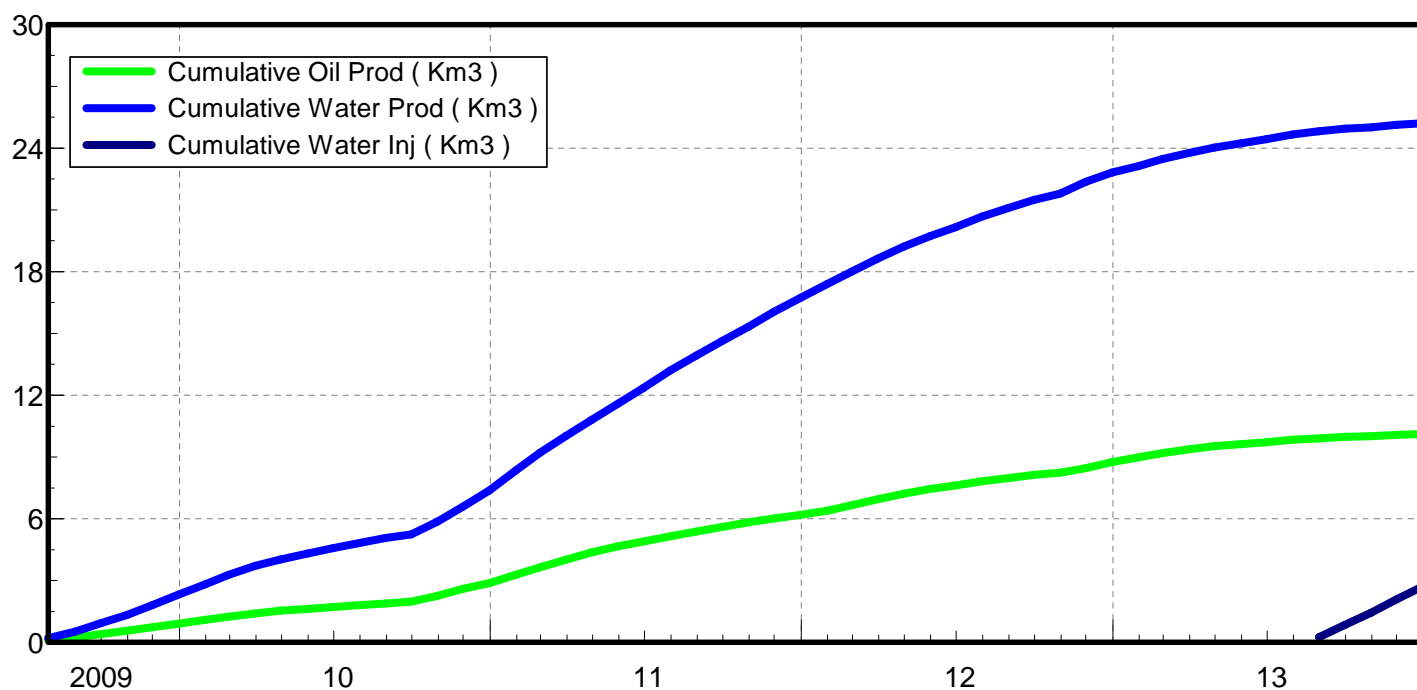
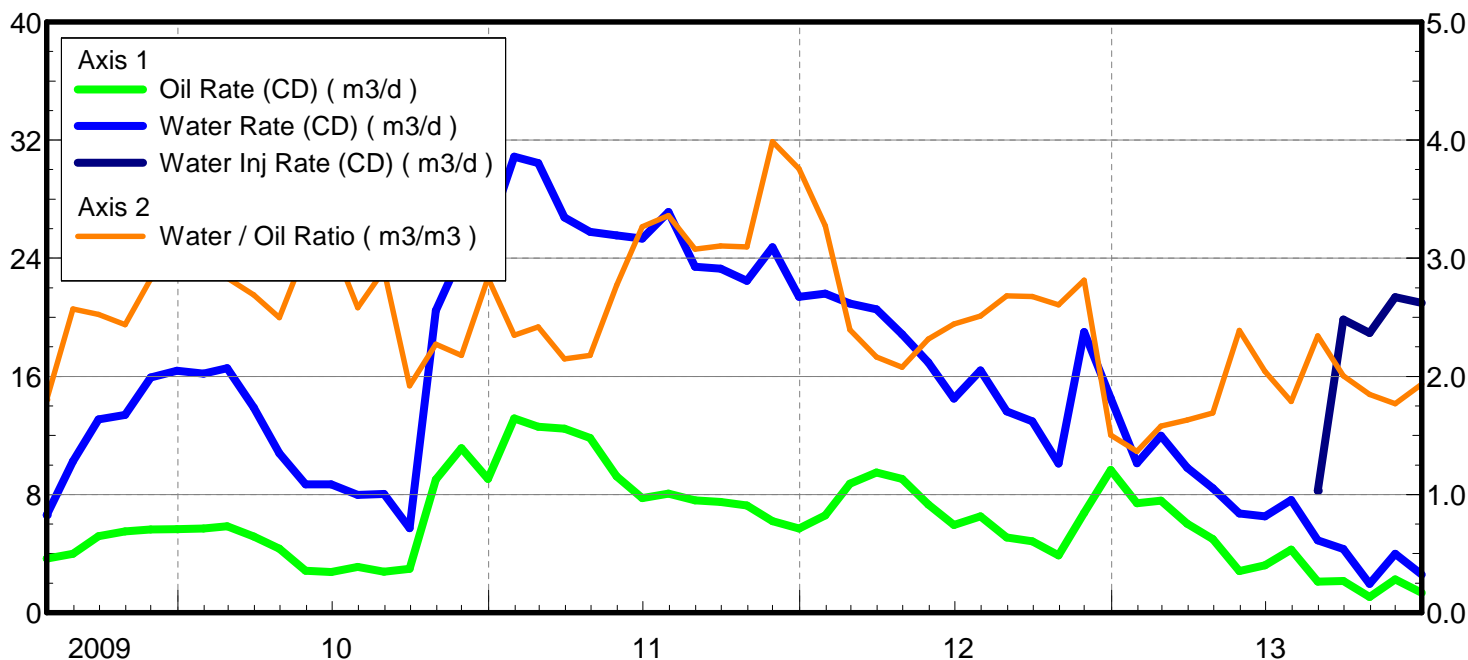
March 23, 2014

Operator: Tundra_O&G_Prtshp

Oil Rate (CD) : 1.34 m3/d

Water Rate (CD) : 2.59 m3/d

Water Inj Rate (CD) : 20.97 m3/d



Date	Oil Rate (CD) m3/d	Water Rate (CD) m3/d	Water Oil Ratio m3/m3	Water Inj Rate (CD) m3/d	Cum Oil Prod Km3	Cum Water Prod Km3	Cum Water Inj Km3	Voidage Replacement Ratio	Cum Voidage Replacemt Ratio
7/31/2009	3.66	6.61	1.80		0.11	0.20	0.00	0.000	0.000
8/31/2009	3.99	10.25	2.57		0.24	0.52	0.00	0.000	0.000
9/30/2009	5.19	13.10	2.52		0.39	0.92	0.00	0.000	0.000
10/31/2009	5.50	13.40	2.44		0.56	1.33	0.00	0.000	0.000
11/30/2009	5.64	15.94	2.82		0.73	1.81	0.00	0.000	0.000
12/31/2009	5.66	16.37	2.89		0.91	2.32	0.00	0.000	0.000
1/31/2010	5.71	16.19	2.84		1.08	2.82	0.00	0.000	0.000
2/28/2010	5.84	16.56	2.83		1.25	3.28	0.00	0.000	0.000
3/31/2010	5.16	13.89	2.69		1.41	3.71	0.00	0.000	0.000
4/30/2010	4.33	10.80	2.50		1.54	4.04	0.00	0.000	0.000
5/31/2010	2.85	8.70	3.06		1.63	4.31	0.00	0.000	0.000
6/30/2010	2.76	8.69	3.14		1.71	4.57	0.00	0.000	0.000
7/31/2010	3.09	7.98	2.58		1.81	4.81	0.00	0.000	0.000
8/31/2010	2.77	8.05	2.90		1.89	5.06	0.00	0.000	0.000
9/30/2010	2.97	5.71	1.92		1.98	5.23	0.00	0.000	0.000
10/31/2010	9.00	20.45	2.27		2.26	5.87	0.00	0.000	0.000
11/30/2010	11.15	24.26	2.18		2.59	6.60	0.00	0.000	0.000
12/31/2010	9.06	25.66	2.83		2.87	7.39	0.00	0.000	0.000
1/31/2011	13.15	30.89	2.35		3.28	8.35	0.00	0.000	0.000
2/28/2011	12.59	30.44	2.42		3.63	9.20	0.00	0.000	0.000
3/31/2011	12.45	26.75	2.15		4.02	10.03	0.00	0.000	0.000
4/30/2011	11.83	25.78	2.18		4.38	10.80	0.00	0.000	0.000
5/31/2011	9.23	25.55	2.77		4.66	11.60	0.00	0.000	0.000
6/30/2011	7.76	25.34	3.27		4.89	12.36	0.00	0.000	0.000
7/31/2011	8.07	27.12	3.36		5.14	13.20	0.00	0.000	0.000
8/31/2011	7.61	23.42	3.08		5.38	13.92	0.00	0.000	0.000
9/30/2011	7.50	23.30	3.10		5.61	14.62	0.00	0.000	0.000
10/31/2011	7.25	22.46	3.10		5.83	15.32	0.00	0.000	0.000
11/30/2011	6.21	24.75	3.99		6.02	16.06	0.00	0.000	0.000
12/31/2011	5.69	21.39	3.76		6.19	16.72	0.00	0.000	0.000
1/31/2012	6.60	21.59	3.27		6.40	17.39	0.00	0.000	0.000
2/29/2012	8.74	20.92	2.39		6.65	18.00	0.00	0.000	0.000
3/31/2012	9.49	20.54	2.16		6.95	18.64	0.00	0.000	0.000
4/30/2012	9.07	18.84	2.08		7.22	19.20	0.00	0.000	0.000
5/31/2012	7.32	16.95	2.32		7.44	19.73	0.00	0.000	0.000
6/30/2012	5.93	14.49	2.44		7.62	20.16	0.00	0.000	0.000
7/31/2012	6.53	16.40	2.51		7.82	20.67	0.00	0.000	0.000
8/31/2012	5.08	13.63	2.68		7.98	21.09	0.00	0.000	0.000
9/30/2012	4.84	12.95	2.68		8.13	21.48	0.00	0.000	0.000
10/31/2012	3.88	10.10	2.60		8.25	21.80	0.00	0.000	0.000
11/30/2012	6.75	19.00	2.81		8.45	22.37	0.00	0.000	0.000
12/31/2012	9.66	14.52	1.50		8.75	22.82	0.00	0.000	0.000
1/31/2013	7.41	10.11	1.36		8.98	23.13	0.00	0.000	0.000
2/28/2013	7.59	11.99	1.58		9.19	23.47	0.00	0.000	0.000
3/31/2013	6.02	9.82	1.63		9.38	23.77	0.00	0.000	0.000
4/30/2013	4.99	8.42	1.69		9.53	24.02	0.00	0.000	0.000
5/31/2013	2.82	6.73	2.39		9.62	24.23	0.00	0.000	0.000
6/30/2013	3.20	6.53	2.04		9.71	24.43	0.00	0.000	0.000

Date	Oil Rate (CD) m3/d	Water Rate (CD) m3/d	Water Oil Ratio m3/m3	Water Inj Rate (CD) m3/d	Cum Oil Prod Km3	Cum Water Prod Km3	Cum Water Inj Km3	Voidage Replacement Ratio	Cum Voidage Replacemt Ratio
7/31/2013	4.27	7.63	1.79		9.84	24.66	0.00	0.000	0.000
8/31/2013	2.09	4.90	2.34	8.25	9.91	24.82	0.26	1.155	0.007
9/30/2013	2.15	4.32	2.00	19.85	9.97	24.94	0.85	2.998	0.024
10/31/2013	1.06	1.96	1.85	18.94	10.01	25.01	1.44	6.119	0.040
11/30/2013	2.25	3.98	1.77	21.37	10.07	25.12	2.08	3.347	0.058
12/31/2013	1.34	2.59	1.93	20.97	10.11	25.21	2.73	5.222	0.076

Oil Formation Vol Factor : 1.07100 m3/m3

Water Formation Vol Factor : 1.00150 m3/m3

Water / Oil Ratio : 3.75 m3/m3

Pattern: 03/12-29-008-28Inj Set: EwartUnit#3

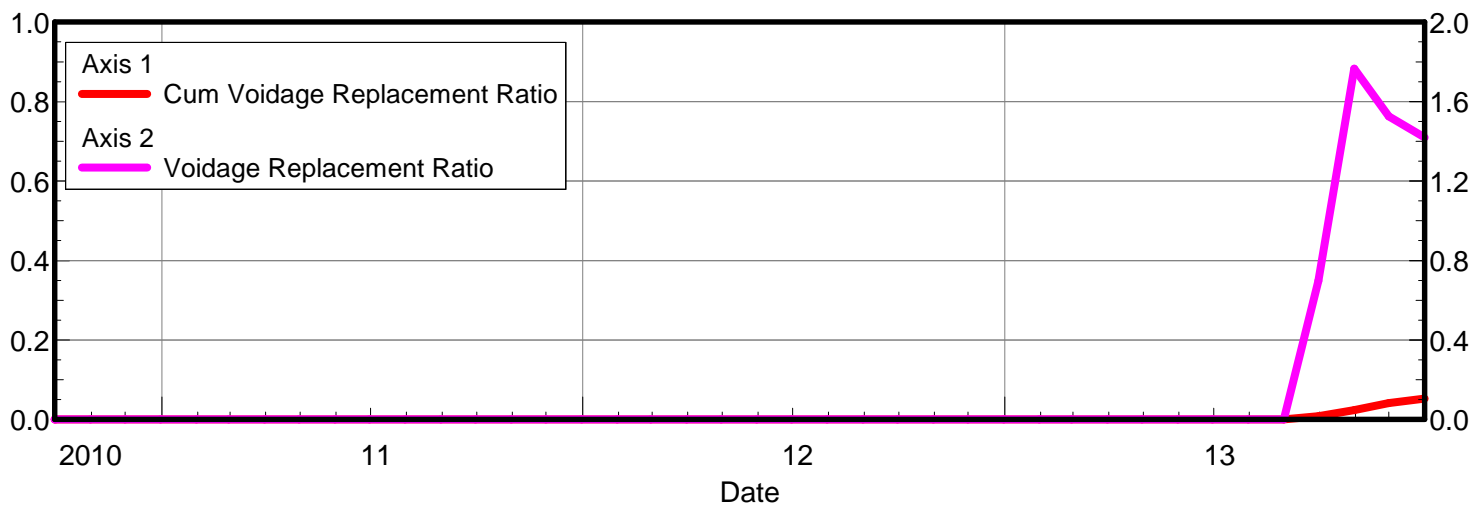
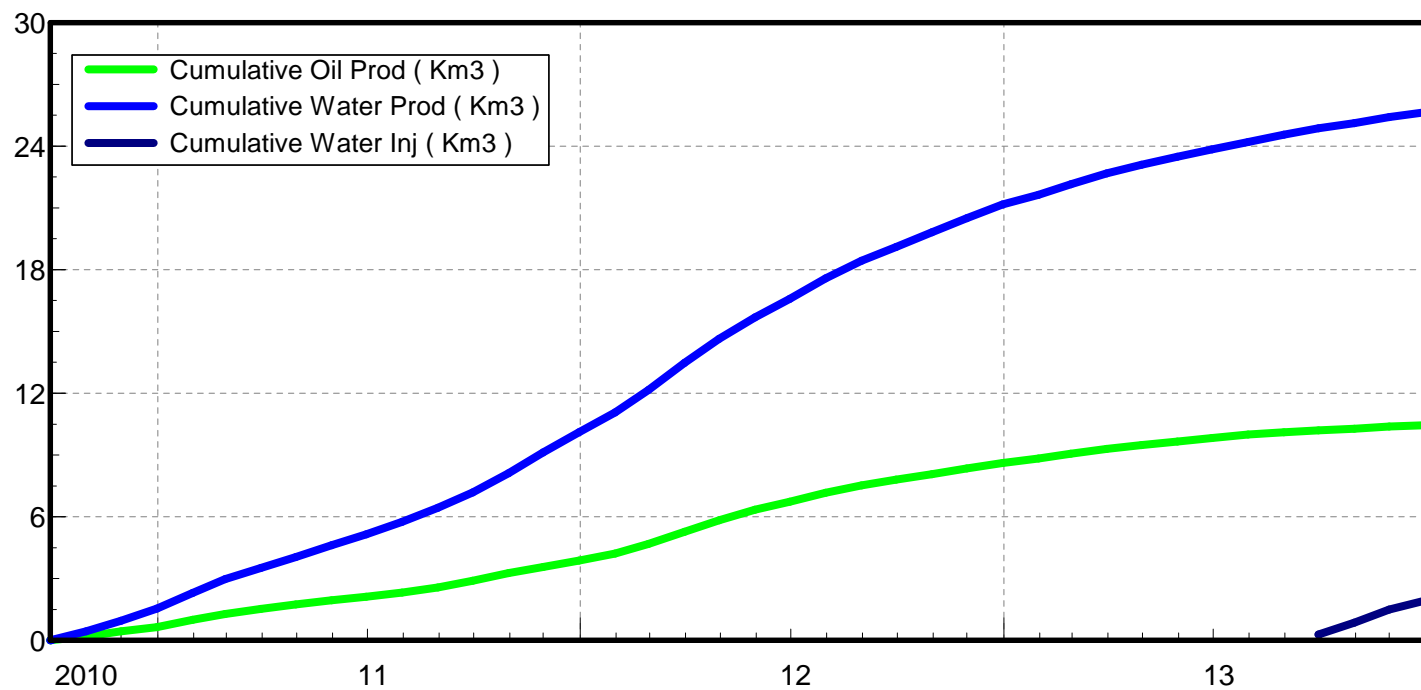
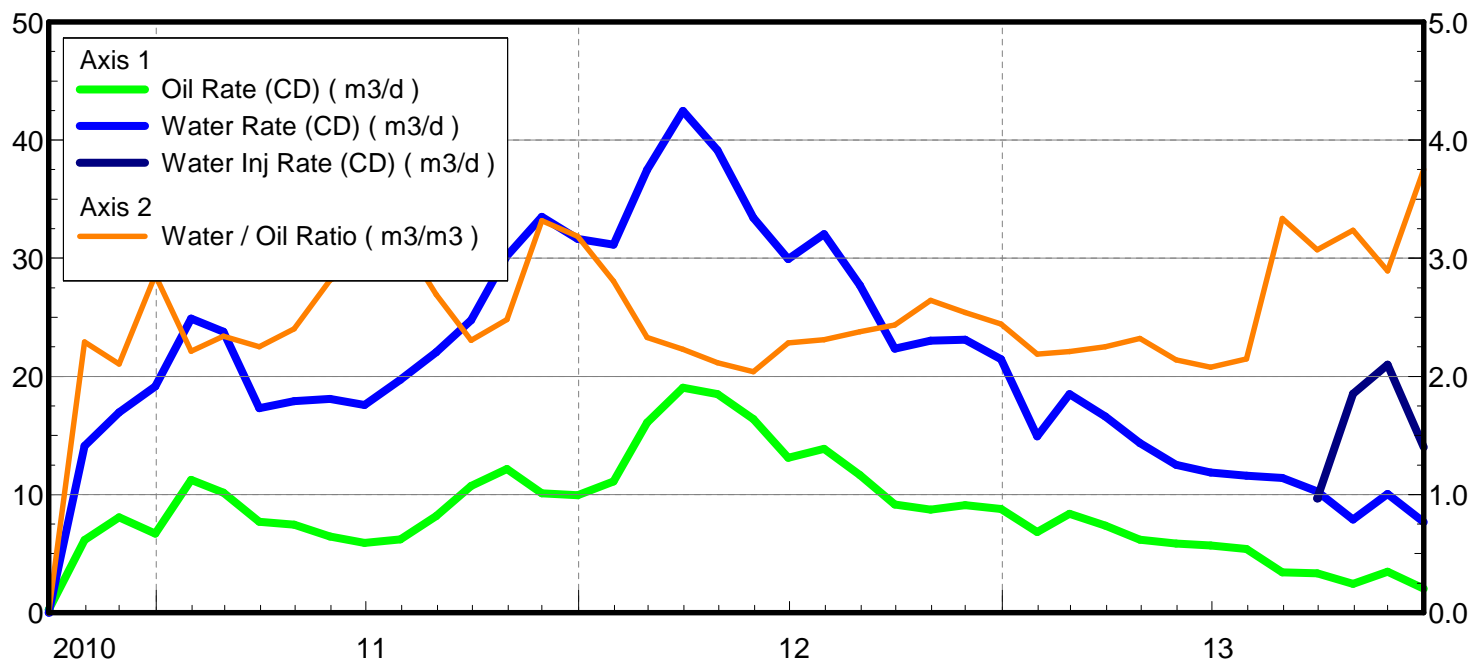
March 23, 2014

Operator: Tundra_O&G_Prtshp

Oil Rate (CD) : 2.05 m3/d

Water Rate (CD) : 7.68 m3/d

Water Inj Rate (CD) : 14.00 m3/d



Date	Oil Rate (CD) m3/d	Water Rate (CD) m3/d	Water Oil Ratio m3/m3	Water Inj Rate (CD) m3/d	Cum Oil Prod Km3	Cum Water Prod Km3	Cum Water Inj Km3	Voidage Replacement Ratio	Cum Voidage Replacemt Ratio
9/30/2010	0.25	0.00	0.00		0.01	0.00	0.00	0.000	0.000
10/31/2010	6.16	14.11	2.29		0.20	0.44	0.00	0.000	0.000
11/30/2010	8.06	16.96	2.10		0.44	0.95	0.00	0.000	0.000
12/31/2010	6.70	19.14	2.86		0.65	1.54	0.00	0.000	0.000
1/31/2011	11.25	24.89	2.21		1.00	2.31	0.00	0.000	0.000
2/28/2011	10.16	23.79	2.34		1.28	2.98	0.00	0.000	0.000
3/31/2011	7.70	17.32	2.25		1.52	3.51	0.00	0.000	0.000
4/30/2011	7.46	17.92	2.40		1.74	4.05	0.00	0.000	0.000
5/31/2011	6.44	18.10	2.81		1.94	4.61	0.00	0.000	0.000
6/30/2011	5.92	17.58	2.97		2.12	5.14	0.00	0.000	0.000
7/31/2011	6.21	19.72	3.18		2.31	5.75	0.00	0.000	0.000
8/31/2011	8.19	22.05	2.69		2.57	6.44	0.00	0.000	0.000
9/30/2011	10.74	24.77	2.31		2.89	7.18	0.00	0.000	0.000
10/31/2011	12.17	30.20	2.48		3.27	8.11	0.00	0.000	0.000
11/30/2011	10.09	33.50	3.32		3.57	9.12	0.00	0.000	0.000
12/31/2011	9.93	31.64	3.19		3.88	10.10	0.00	0.000	0.000
1/31/2012	11.10	31.14	2.81		4.22	11.07	0.00	0.000	0.000
2/29/2012	16.09	37.49	2.33		4.69	12.15	0.00	0.000	0.000
3/31/2012	19.05	42.46	2.23		5.28	13.47	0.00	0.000	0.000
4/30/2012	18.49	39.13	2.12		5.83	14.64	0.00	0.000	0.000
5/31/2012	16.38	33.41	2.04		6.34	15.68	0.00	0.000	0.000
6/30/2012	13.12	29.94	2.28		6.73	16.58	0.00	0.000	0.000
7/31/2012	13.87	32.05	2.31		7.16	17.57	0.00	0.000	0.000
8/31/2012	11.64	27.70	2.38		7.53	18.43	0.00	0.000	0.000
9/30/2012	9.17	22.33	2.44		7.80	19.10	0.00	0.000	0.000
10/31/2012	8.71	23.03	2.64		8.07	19.81	0.00	0.000	0.000
11/30/2012	9.10	23.11	2.54		8.34	20.51	0.00	0.000	0.000
12/31/2012	8.78	21.46	2.44		8.62	21.17	0.00	0.000	0.000
1/31/2013	6.82	14.92	2.19		8.83	21.63	0.00	0.000	0.000
2/28/2013	8.38	18.51	2.21		9.06	22.15	0.00	0.000	0.000
3/31/2013	7.37	16.60	2.25		9.29	22.67	0.00	0.000	0.000
4/30/2013	6.18	14.36	2.32		9.48	23.10	0.00	0.000	0.000
5/31/2013	5.85	12.52	2.14		9.66	23.49	0.00	0.000	0.000
6/30/2013	5.70	11.85	2.08		9.83	23.84	0.00	0.000	0.000
7/31/2013	5.40	11.60	2.15		10.00	24.20	0.00	0.000	0.000
8/31/2013	3.42	11.41	3.34		10.10	24.55	0.00	0.000	0.000
9/30/2013	3.35	10.28	3.07	9.67	10.20	24.86	0.29	0.698	0.008
10/31/2013	2.43	7.88	3.24	18.52	10.28	25.11	0.86	1.766	0.024
11/30/2013	3.48	10.05	2.89	21.00	10.38	25.41	1.49	1.525	0.041
12/31/2013	2.05	7.68	3.75	14.00	10.44	25.65	1.93	1.419	0.052



TUNDRA OIL & GAS PARTNERSHIP

TUNDRA DALY SINCLAIR PROV HZNTL A12-29-8-28

102/12-29-008-28W1/0

LICENSE #: 8401

BAKKEN FORMATION

Open Hole: 1025 – 2442 mKBMD
(885.45 – 893.86 TVD)

RESERVOIR PRESSURE SURVEY DATA
DECEMBER 17th, 2011 – OCTOBER 9th, 2012

Prepared by: **DOLLCO Well Data Services**
e-mail: dollco@shaw.ca

PO Box 326
417A Mississippian Drive
Esteron, SK
S4A 2A4

Cell: (306) 421 - 7330
Fax: (306) 634 - 7976
Res: (306) 634 - 8761

E-mail: qualityw@sasktel.net

Pressure Survey Report

Company Information

Company Name
Contact
e-mail
Phone
Site Contact
Site Phone

TUNDRA OIL & GAS PARTNERSHIP
CRAIG LANE
craig.lane@tundraoilandgas.com
1-204-748-4409
BRENT DALZIEZ
1-204-522-0864

Well Information

Well Name TUNDRA DALY SINCLAIR PROV HZNTL A12-29-8-28
Unique Well ID 102/12-29-008-28W1/00
Surface Location 13C-28 / A12-29-8-28W1
Well License Number 8401
Well Type Horizontal
Well Fluid Type 01 Oil
Field SINCLAIR

KB Elevation (SL) 501.13 m
CF Elevation (SL) 496.63 m
GL Elevation (SL) 496.63 m
Distance from KB to CF (Log) 4.50 m
KB-GL Offset 4.50 m

Tubing ID mm
Tubing OD mm
Tubing Depth(Log KB) m
Tubing Depth(TVD KB) m
Casing ID mm
Casing OD 177.8 mm
Casing Depth(Log KB) 1025.00 m
Casing Depth(TVD KB) 885.45 m
PBTD(Log KB) m
PBTD(TVD KB) m



Pressure Survey Report

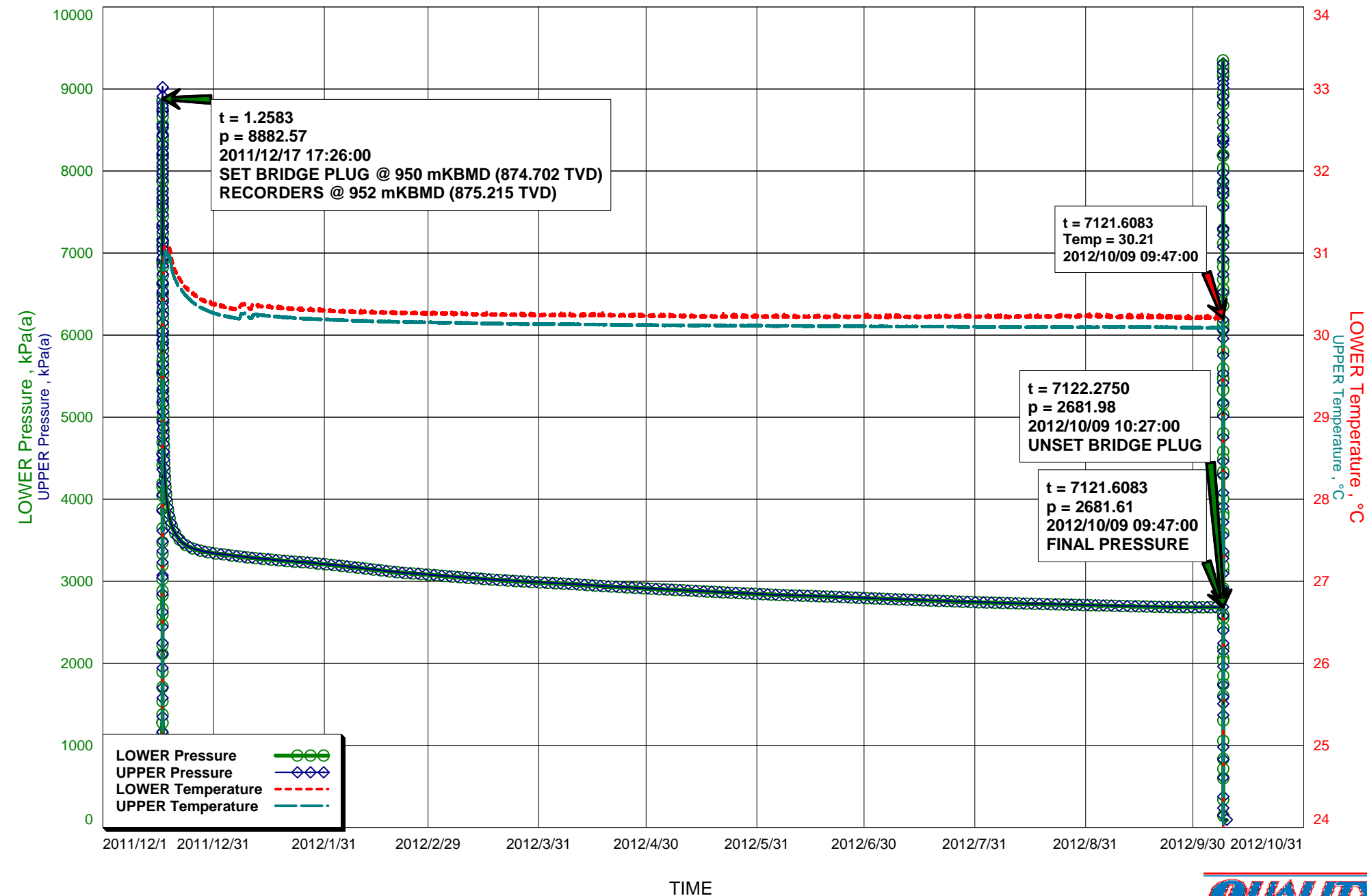
Test Information

Well Name	TUNDRA DALY SINCLAIR PROV HZNTL A12-29-8-28
Unique Well ID	102/12-29-008-28W1/00
Surface Location	13C-28 / A12-29-8-28W1
Well License Number	8401
Well Fluid Type	01 Oil
Test Purpose	Initial Test
Test Type	RESERVOIR PRESSURE SURVEY
Formation	BAKKEN
Pool	
Well Type Indicator	Horizontal
Test/Prod. Interval Top KB (Log)	1025.00 m
Test/Prod. Interval Base KB (Log)	2442.00 m
MPP(Log KB)	1733.50 m
Test/Prod Interval Top KB (TVD)	885.45 m
Test/Prod. Interval Base m KB (TVD)	893.86 m
MPP(TVD KB)	889.66 m
Date/Time Gauge on Bottom	2011/12/17 17:11:30
Date/Time Gauge Off Bottom	2012/10/09 10:27:00
Time/Date Well Shut-In	2011/12/17 17:26:00
Tubing Pressure Initial	kPa(a)
Casing Pressure Initial	kPa(a)
Tubing Pressure: Final	kPa(a)
Casing Pressure: Final	kPa(a)
Last Measured Pressure at Run Depth	2681.61 kPa(a)
Reservoir Temperature	30.21 °C
Service Company	Quality Wireline Services Ltd.
Representative	IVORY HERMAN
Prepared By	DOLLCO Well Data Services
Qualified By	RICK DOLL
Report Date	2012/10/17

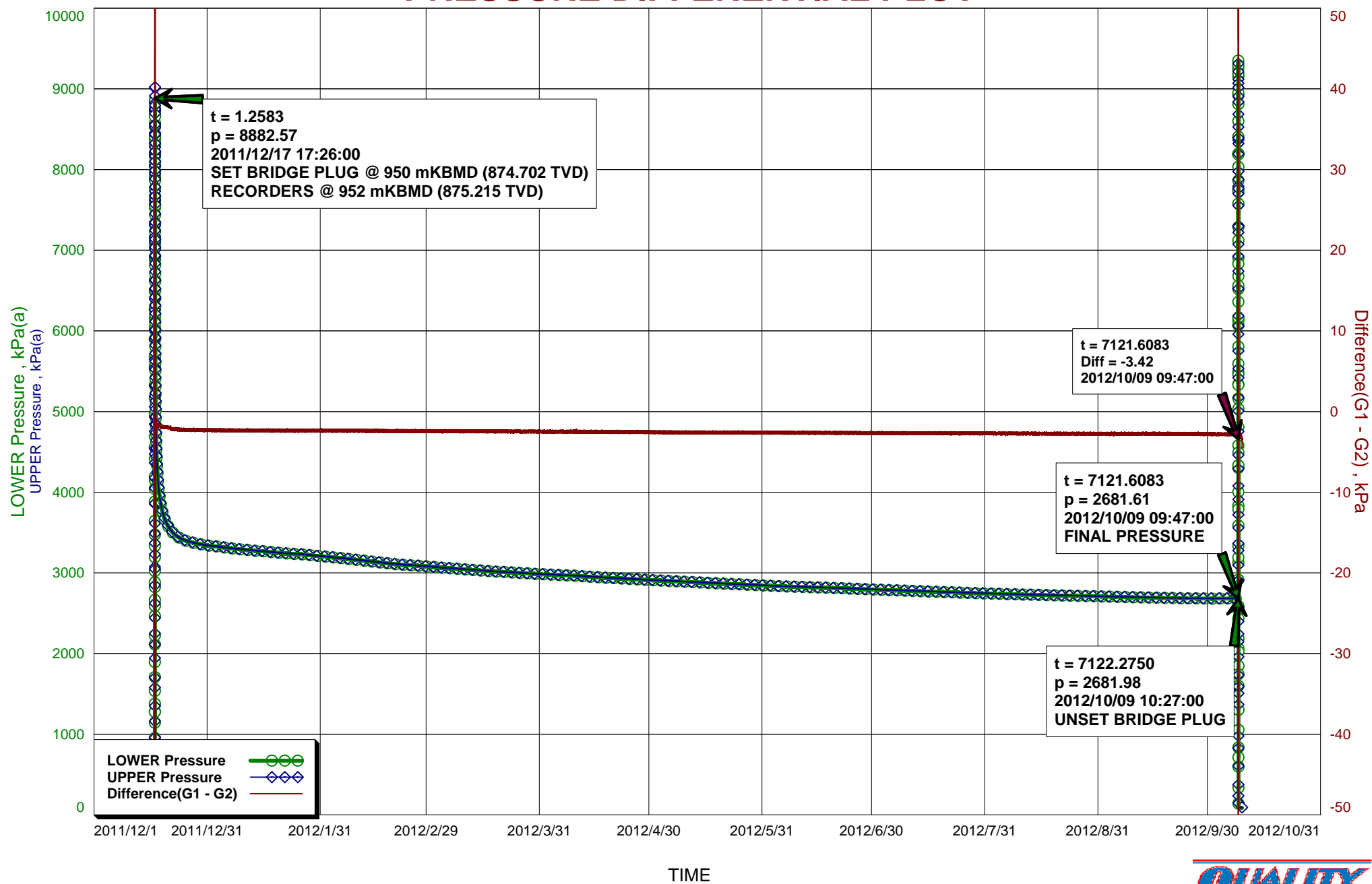
RECORDERS RUN BELOW A BRIDGE PLUG BY A DRILLING RIG & PULLED BY SERVICE RIG
TIME CHANGE FROM MST TO DST NOT INCORPORATED INTO TEST DATA



RESERVOIR PRESSURE SURVEY



PRESSURE DIFFERENTIAL PLOT



Recorder Information

Company Name	TUNDRA OIL & GAS PARTNERSHIP
Unique Well ID	102/12-29-008-28W1/00
Well Name	TUNDRA DALY SINCLAIR PROV HZNTL A12-29-8-28
Formation	BAKKEN
Start Test Date	2011/12/17
Final Test Date	2012/10/09

Gauge 1

Gauge Name	LOWER	Gauge Type	ELECTRONIC
Gauge Serial Number	40461	Gauge Manufacturer	TREAL TIME MEASUREMENTS
Run Depth (Log KB)	952.00 m	Gauge Model	KC2 STRAIN
Date of Last Calibration	2011/12/03	Maximum Recorder Range	10340.00 kPa
Gauge Start Date	2011/12/17	Gauge Start Time	16:10:30
Gauge Stop Date	2012/10/10	Gauge Stop Time	11:29:00
Date Gauge On Bottom	2011/12/17	Time Gauge On Bottom	17:11:30
Date Gauge Off Bottom	2012/10/09	Time Gauge Off Bottom	10:27:00

Gauge 2

Gauge Name	UPPER	Gauge Type	ELECTRONIC
Gauge Serial Number	40458	Gauge Manufacturer	REAL TIME MEASUREMENTS
Run Depth (Log KB)	951.70 m	Gauge Model	KC2 STRAIN
Date of Last Calibration	2011/12/03	Maximum Recorder Range	10340.00 kPa
Gauge Start Date	2011/12/17	Gauge Start Time	16:10:30
Gauge Stop Date	2012/10/10	Gauge Stop Time	11:29:00
Date Gauge On Bottom	2011/12/17	Time Gauge On Bottom	17:11:30
Date Gauge Off Bottom	2012/10/09	Time Gauge Off Bottom	10:19:30

TUNDRA OIL & GAS PARTNERSHIP
102/12-29-008-28W1/00
Start Test Date: 2011/12/17
Final Test Date: 2012/10/09

TUNDRA DALY SINCLAIR PROV HZNTL A12-29-8-28
Formation: BAKKEN

RESERVOIR PRESSURE SURVEY

	LOWER Date yyyy/mm/dd	LOWER Clk Time hh:mm:ss	LOWER Time hr	LOWER Pres. kPa(a)	LOWER Temp. °C	UPPER Time hr	UPPER Pres. kPa(a)	UPPER Temp. °C
1	2011/12/17	16:10:30	0.0000	619.38	17.59	0.0000	574.83	17.29
2	2011/12/17	16:10:30	0.0000	RIH, ACTIVATE RECORDERS S/N: 40461(L) & 40458(U)				
3	2011/12/17	16:11:00	0.0083	572.38	17.97	0.0083	574.50	17.68
4	2011/12/17	17:11:30	1.0167	8762.43	29.29	1.0167	8760.27	29.21
5	2011/12/17	17:11:30	1.0167	RECORDERS ON BOTTOM @ 952 mKB (875.215 TVD)				
6	2011/12/17	17:12:00	1.0250	8751.72	29.30	1.0250	8753.61	29.21
7	2011/12/17	17:26:00	1.2583	8882.57	29.45	1.2583	8860.89	29.36
8	2011/12/17	17:26:00	1.2583	SET BRIDGE PLUG @ 950 mKB (874.702 TVD)				
9	2011/12/17	17:26:30	1.2667	8817.65	29.45	1.2667	8830.02	29.33
10	2011/12/18	16:10:30	24.0000	4062.71	31.12	24.0000	4064.36	31.02
11	2011/12/19	16:10:30	48.0000	3772.03	31.06	48.0000	3773.90	30.95
12	2011/12/20	16:10:30	72.0000	3633.01	30.86	72.0000	3634.96	30.74
13	2011/12/21	16:10:30	96.0000	3551.72	30.75	96.0000	3553.67	30.64
14	2011/12/22	16:10:30	120.0000	3494.79	30.68	120.0000	3496.96	30.57
15	2011/12/23	16:10:30	144.0000	3456.08	30.60	144.0000	3458.34	30.51
16	2011/12/24	16:10:30	168.0000	3427.65	30.55	168.0000	3429.86	30.46
17	2011/12/25	16:10:30	192.0000	3407.43	30.52	192.0000	3409.66	30.42
18	2011/12/26	16:10:30	216.0000	3391.74	30.48	216.0000	3394.04	30.38
19	2011/12/27	16:10:30	240.0000	3378.98	30.45	240.0000	3381.22	30.35
20	2011/12/28	16:10:30	264.0000	3367.33	30.43	264.0000	3369.54	30.33
21	2011/12/29	16:10:30	288.0000	3358.05	30.41	288.0000	3360.30	30.31
22	2011/12/30	16:10:30	312.0000	3350.22	30.39	312.0000	3352.45	30.29
23	2011/12/31	16:10:30	336.0000	3342.37	30.38	336.0000	3344.62	30.27
24	2012/01/01	16:10:30	360.0000	3336.13	30.36	360.0000	3338.45	30.26
25	2012/01/02	16:10:30	384.0000	3330.56	30.35	384.0000	3332.79	30.25
26	2012/01/03	16:10:30	408.0000	3326.95	30.35	408.0000	3329.19	30.24
27	2012/01/04	16:10:30	432.0000	3320.93	30.33	432.0000	3323.23	30.23
28	2012/01/05	16:10:30	456.0000	3314.81	30.32	456.0000	3317.08	30.22
29	2012/01/06	16:10:30	480.0000	3309.63	30.32	480.0000	3311.95	30.21
30	2012/01/07	16:10:30	504.0000	3304.01	30.31	504.0000	3306.49	30.20
31	2012/01/08	16:10:30	528.0000	3298.76	30.37	528.0000	3301.09	30.26
32	2012/01/09	16:10:30	552.0000	3293.46	30.37	552.0000	3295.87	30.26
33	2012/01/10	16:10:30	576.0000	3289.02	30.37	576.0000	3291.30	30.23
34	2012/01/11	16:10:30	600.0000	3284.98	30.34	600.0000	3287.23	30.21
35	2012/01/12	16:10:30	624.0000	3280.53	30.36	624.0000	3282.91	30.25
36	2012/01/13	16:10:30	648.0000	3276.16	30.36	648.0000	3278.35	30.25
37	2012/01/14	16:10:30	672.0000	3271.64	30.35	672.0000	3274.02	30.24
38	2012/01/15	16:10:30	696.0000	3267.66	30.35	696.0000	3270.06	30.24
39	2012/01/16	16:10:30	720.0000	3264.16	30.34	720.0000	3266.56	30.23
40	2012/01/17	16:10:30	744.0000	3259.87	30.34	744.0000	3262.25	30.23

LOWER Serial Number: 40461 Start Date: 2011/12/17 16:10:30 Run Depth: 952.00
UPPER Serial Number: 40458 Start Date: 2011/12/17 16:10:30 Run Depth: 951.70
Print Filter: Print every 24 hour

TUNDRA OIL & GAS PARTNERSHIP
102/12-29-008-28W1/00
Start Test Date: 2011/12/17
Final Test Date: 2012/10/09

TUNDRA DALY SINCLAIR PROV HZNTL A12-29-8-28
Formation: BAKKEN

RESERVOIR PRESSURE SURVEY

	LOWER Date yyyy/mm/dd	LOWER Clk Time hh:mm:ss	LOWER Time hr	LOWER Pres. kPa(a)	LOWER Temp. °C	UPPER Time hr	UPPER Pres. kPa(a)	UPPER Temp. °C
41	2012/01/18	16:10:30	768.0000	3255.70	30.33	768.0000	3258.02	30.23
42	2012/01/19	16:10:30	792.0000	3251.72	30.33	792.0000	3254.11	30.22
43	2012/01/20	16:10:30	816.0000	3248.33	30.33	816.0000	3250.66	30.22
44	2012/01/21	16:10:30	840.0000	3244.07	30.33	840.0000	3246.45	30.22
45	2012/01/22	16:10:30	864.0000	3240.95	30.32	864.0000	3243.35	30.21
46	2012/01/23	16:10:30	888.0000	3237.89	30.32	888.0000	3240.18	30.21
47	2012/01/24	16:10:30	912.0000	3234.22	30.32	912.0000	3236.65	30.21
48	2012/01/25	16:10:30	936.0000	3232.05	30.31	936.0000	3234.32	30.20
49	2012/01/26	16:10:30	960.0000	3230.62	30.31	960.0000	3233.02	30.20
50	2012/01/27	16:10:30	984.0000	3225.89	30.30	984.0000	3228.18	30.20
51	2012/01/28	16:10:30	1008.0000	3222.43	30.31	1008.0000	3224.78	30.20
52	2012/01/29	16:10:30	1032.0000	3216.48	30.30	1032.0000	3218.84	30.20
53	2012/01/30	16:10:30	1056.0000	3211.75	30.30	1056.0000	3214.13	30.19
54	2012/01/31	16:10:30	1080.0000	3207.64	30.30	1080.0000	3209.98	30.19
55	2012/02/01	16:10:30	1104.0000	3204.11	30.30	1104.0000	3206.49	30.19
56	2012/02/02	16:10:30	1128.0000	3199.89	30.29	1128.0000	3202.20	30.18
57	2012/02/03	16:10:30	1152.0000	3195.44	30.29	1152.0000	3197.77	30.19
58	2012/02/04	16:10:30	1176.0000	3190.84	30.29	1176.0000	3193.27	30.19
59	2012/02/05	16:10:30	1200.0000	3186.41	30.29	1200.0000	3188.84	30.19
60	2012/02/06	16:10:30	1224.0000	3182.40	30.29	1224.0000	3184.77	30.18
61	2012/02/07	16:10:30	1248.0000	3177.77	30.29	1248.0000	3180.08	30.18
62	2012/02/08	16:10:30	1272.0000	3172.46	30.29	1272.0000	3174.83	30.18
63	2012/02/09	16:10:30	1296.0000	3167.00	30.28	1296.0000	3169.44	30.18
64	2012/02/10	16:10:30	1320.0000	3162.58	30.28	1320.0000	3165.01	30.17
65	2012/02/11	16:10:30	1344.0000	3157.45	30.28	1344.0000	3159.83	30.18
66	2012/02/12	16:10:30	1368.0000	3152.09	30.28	1368.0000	3154.50	30.17
67	2012/02/13	16:10:30	1392.0000	3146.63	30.28	1392.0000	3149.05	30.17
68	2012/02/14	16:10:30	1416.0000	3141.75	30.28	1416.0000	3144.18	30.17
69	2012/02/15	16:10:30	1440.0000	3136.75	30.28	1440.0000	3139.27	30.17
70	2012/02/16	16:10:30	1464.0000	3131.45	30.27	1464.0000	3133.79	30.16
71	2012/02/17	16:10:30	1488.0000	3126.99	30.27	1488.0000	3129.42	30.17
72	2012/02/18	16:10:30	1512.0000	3121.58	30.27	1512.0000	3123.89	30.17
73	2012/02/19	16:10:30	1536.0000	3116.69	30.27	1536.0000	3119.11	30.16
74	2012/02/20	16:10:30	1560.0000	3111.75	30.27	1560.0000	3114.22	30.16
75	2012/02/21	16:10:30	1584.0000	3107.18	30.28	1584.0000	3109.63	30.16
76	2012/02/22	16:10:30	1608.0000	3102.64	30.27	1608.0000	3105.16	30.16
77	2012/02/23	16:10:30	1632.0000	3098.92	30.26	1632.0000	3101.38	30.16
78	2012/02/24	16:10:30	1656.0000	3097.13	30.27	1656.0000	3099.45	30.16
79	2012/02/25	16:10:30	1680.0000	3093.17	30.27	1680.0000	3095.51	30.16
80	2012/02/26	16:10:30	1704.0000	3091.79	30.26	1704.0000	3094.24	30.16

LOWER Serial Number: 40461 Start Date: 2011/12/17 16:10:30 Run Depth: 952.00
UPPER Serial Number: 40458 Start Date: 2011/12/17 16:10:30 Run Depth: 951.70
Print Filter: Print every 24 hour

TUNDRA OIL & GAS PARTNERSHIP
102/12-29-008-28W1/00
Start Test Date: 2011/12/17
Final Test Date: 2012/10/09

TUNDRA DALY SINCLAIR PROV HZNTL A12-29-8-28
Formation: BAKKEN

RESERVOIR PRESSURE SURVEY

	LOWER Date yyyy/mm/dd	LOWER Clk Time hh:mm:ss	LOWER Time hr	LOWER Pres. kPa(a)	LOWER Temp. °C	UPPER Time hr	UPPER Pres. kPa(a)	UPPER Temp. °C
81	2012/02/27	16:10:30	1728.0000	3088.25	30.27	1728.0000	3090.69	30.16
82	2012/02/28	16:10:30	1752.0000	3084.61	30.26	1752.0000	3087.04	30.16
83	2012/02/29	16:10:30	1776.0000	3080.87	30.27	1776.0000	3083.37	30.16
84	2012/03/01	16:10:30	1800.0000	3077.13	30.26	1800.0000	3079.67	30.16
85	2012/03/02	16:10:30	1824.0000	3073.62	30.26	1824.0000	3075.97	30.15
86	2012/03/03	16:10:30	1848.0000	3070.03	30.25	1848.0000	3072.54	30.16
87	2012/03/04	16:10:30	1872.0000	3066.37	30.26	1872.0000	3068.73	30.15
88	2012/03/05	16:10:30	1896.0000	3062.43	30.26	1896.0000	3064.82	30.15
89	2012/03/06	16:10:30	1920.0000	3059.07	30.27	1920.0000	3061.53	30.15
90	2012/03/07	16:10:30	1944.0000	3056.14	30.27	1944.0000	3058.53	30.15
91	2012/03/08	16:10:30	1968.0000	3052.59	30.26	1968.0000	3055.08	30.15
92	2012/03/09	16:10:30	1992.0000	3048.93	30.26	1992.0000	3051.27	30.15
93	2012/03/10	16:10:30	2016.0000	3045.36	30.25	2016.0000	3047.81	30.15
94	2012/03/11	16:10:30	2040.0000	3042.12	30.25	2040.0000	3044.62	30.15
95	2012/03/12	16:10:30	2064.0000	3038.93	30.26	2064.0000	3041.34	30.15
96	2012/03/13	16:10:30	2088.0000	3036.31	30.25	2088.0000	3038.78	30.14
97	2012/03/14	16:10:30	2112.0000	3033.60	30.25	2112.0000	3036.12	30.15
98	2012/03/15	16:10:30	2136.0000	3030.27	30.25	2136.0000	3032.71	30.14
99	2012/03/16	16:10:30	2160.0000	3025.41	30.25	2160.0000	3027.90	30.15
100	2012/03/17	16:10:30	2184.0000	3022.74	30.25	2184.0000	3025.12	30.14
101	2012/03/18	16:10:30	2208.0000	3019.37	30.25	2208.0000	3021.78	30.14
102	2012/03/19	16:10:30	2232.0000	3016.32	30.26	2232.0000	3018.79	30.14
103	2012/03/20	16:10:30	2256.0000	3014.04	30.25	2256.0000	3016.54	30.14
104	2012/03/21	16:10:30	2280.0000	3011.37	30.25	2280.0000	3013.85	30.14
105	2012/03/22	16:10:30	2304.0000	3009.52	30.25	2304.0000	3011.86	30.14
106	2012/03/23	16:10:30	2328.0000	3006.73	30.25	2328.0000	3009.19	30.13
107	2012/03/24	16:10:30	2352.0000	3003.69	30.25	2352.0000	3006.16	30.14
108	2012/03/25	16:10:30	2376.0000	3001.27	30.24	2376.0000	3003.67	30.14
109	2012/03/26	16:10:30	2400.0000	2997.88	30.26	2400.0000	3000.35	30.14
110	2012/03/27	16:10:30	2424.0000	2995.42	30.25	2424.0000	2997.91	30.14
111	2012/03/28	16:10:30	2448.0000	2993.15	30.24	2448.0000	2995.63	30.13
112	2012/03/29	16:10:30	2472.0000	2990.39	30.25	2472.0000	2992.89	30.14
113	2012/03/30	16:10:30	2496.0000	2987.75	30.24	2496.0000	2990.18	30.13
114	2012/03/31	16:10:30	2520.0000	2985.38	30.24	2520.0000	2987.91	30.13
115	2012/04/01	16:10:30	2544.0000	2983.18	30.24	2544.0000	2985.65	30.13
116	2012/04/02	16:10:30	2568.0000	2981.70	30.25	2568.0000	2984.18	30.14
117	2012/04/03	16:10:30	2592.0000	2979.17	30.24	2592.0000	2981.62	30.13
118	2012/04/04	16:10:30	2616.0000	2976.26	30.24	2616.0000	2978.71	30.13
119	2012/04/05	16:10:30	2640.0000	2973.93	30.25	2640.0000	2976.37	30.13
120	2012/04/06	16:10:30	2664.0000	2971.65	30.24	2664.0000	2974.22	30.13

LOWER Serial Number: 40461 Start Date: 2011/12/17 16:10:30 Run Depth: 952.00
UPPER Serial Number: 40458 Start Date: 2011/12/17 16:10:30 Run Depth: 951.70
Print Filter: Print every 24 hour

TUNDRA OIL & GAS PARTNERSHIP
102/12-29-008-28W1/00
Start Test Date: 2011/12/17
Final Test Date: 2012/10/09

TUNDRA DALY SINCLAIR PROV HZNTL A12-29-8-28
Formation: BAKKEN

RESERVOIR PRESSURE SURVEY

	LOWER Date yyyy/mm/dd	LOWER Clk Time hh:mm:ss	LOWER Time hr	LOWER Pres. kPa(a)	LOWER Temp. °C	UPPER Time hr	UPPER Pres. kPa(a)	UPPER Temp. °C
121	2012/04/07	16:10:30	2688.0000	2969.73	30.25	2688.0000	2972.29	30.13
122	2012/04/08	16:10:30	2712.0000	2967.82	30.24	2712.0000	2970.34	30.13
123	2012/04/09	16:10:30	2736.0000	2965.80	30.24	2736.0000	2968.30	30.13
124	2012/04/10	16:10:30	2760.0000	2963.99	30.24	2760.0000	2966.49	30.13
125	2012/04/11	16:10:30	2784.0000	2961.06	30.24	2784.0000	2963.52	30.13
126	2012/04/12	16:10:30	2808.0000	2957.78	30.24	2808.0000	2960.34	30.13
127	2012/04/13	16:10:30	2832.0000	2954.62	30.24	2832.0000	2957.19	30.13
128	2012/04/14	16:10:30	2856.0000	2951.66	30.24	2856.0000	2954.12	30.13
129	2012/04/15	16:10:30	2880.0000	2948.84	30.24	2880.0000	2951.38	30.13
130	2012/04/16	16:10:30	2904.0000	2946.11	30.24	2904.0000	2948.64	30.13
131	2012/04/17	16:10:30	2928.0000	2943.30	30.24	2928.0000	2945.80	30.13
132	2012/04/18	16:10:30	2952.0000	2940.62	30.25	2952.0000	2943.12	30.13
133	2012/04/19	16:10:30	2976.0000	2938.18	30.24	2976.0000	2940.68	30.13
134	2012/04/20	16:10:30	3000.0000	2935.68	30.24	3000.0000	2938.24	30.12
135	2012/04/21	16:10:30	3024.0000	2933.55	30.24	3024.0000	2936.06	30.12
136	2012/04/22	16:10:30	3048.0000	2931.40	30.24	3048.0000	2933.86	30.13
137	2012/04/23	16:10:30	3072.0000	2928.53	30.24	3072.0000	2931.11	30.13
138	2012/04/24	16:10:30	3096.0000	2926.06	30.24	3096.0000	2928.52	30.12
139	2012/04/25	16:10:30	3120.0000	2924.22	30.23	3120.0000	2926.76	30.13
140	2012/04/26	16:10:30	3144.0000	2921.88	30.24	3144.0000	2924.42	30.12
141	2012/04/27	16:10:30	3168.0000	2919.50	30.24	3168.0000	2922.02	30.12
142	2012/04/28	16:10:30	3192.0000	2916.96	30.23	3192.0000	2919.52	30.12
143	2012/04/29	16:10:30	3216.0000	2914.33	30.24	3216.0000	2916.76	30.12
144	2012/04/30	16:10:30	3240.0000	2911.71	30.24	3240.0000	2914.19	30.12
145	2012/05/01	16:10:30	3264.0000	2909.32	30.24	3264.0000	2911.87	30.12
146	2012/05/02	16:10:30	3288.0000	2907.25	30.23	3288.0000	2909.80	30.13
147	2012/05/03	16:10:30	3312.0000	2905.44	30.23	3312.0000	2907.88	30.13
148	2012/05/04	16:10:30	3336.0000	2902.93	30.23	3336.0000	2905.50	30.12
149	2012/05/05	16:10:30	3360.0000	2900.65	30.23	3360.0000	2903.16	30.12
150	2012/05/06	16:10:30	3384.0000	2898.22	30.23	3384.0000	2900.77	30.12
151	2012/05/07	16:10:30	3408.0000	2896.26	30.23	3408.0000	2898.82	30.12
152	2012/05/08	16:10:30	3432.0000	2894.20	30.24	3432.0000	2896.86	30.12
153	2012/05/09	16:10:30	3456.0000	2891.69	30.23	3456.0000	2894.27	30.12
154	2012/05/10	16:10:30	3480.0000	2889.59	30.23	3480.0000	2892.12	30.12
155	2012/05/11	16:10:30	3504.0000	2887.79	30.23	3504.0000	2890.40	30.12
156	2012/05/12	16:10:30	3528.0000	2885.70	30.23	3528.0000	2888.28	30.12
157	2012/05/13	16:10:30	3552.0000	2883.44	30.23	3552.0000	2885.95	30.12
158	2012/05/14	16:10:30	3576.0000	2881.10	30.23	3576.0000	2883.79	30.12
159	2012/05/15	16:10:30	3600.0000	2879.23	30.23	3600.0000	2881.74	30.12
160	2012/05/16	16:10:30	3624.0000	2876.48	30.22	3624.0000	2879.05	30.12

LOWER Serial Number: 40461 Start Date: 2011/12/17 16:10:30 Run Depth: 952.00
UPPER Serial Number: 40458 Start Date: 2011/12/17 16:10:30 Run Depth: 951.70
Print Filter: Print every 24 hour

TUNDRA OIL & GAS PARTNERSHIP
102/12-29-008-28W1/00
Start Test Date: 2011/12/17
Final Test Date: 2012/10/09

TUNDRA DALY SINCLAIR PROV HZNTL A12-29-8-28
Formation: BAKKEN

RESERVOIR PRESSURE SURVEY

	LOWER Date yyyy/mm/dd	LOWER Clk Time hh:mm:ss	LOWER Time hr	LOWER Pres. kPa(a)	LOWER Temp. °C	UPPER Time hr	UPPER Pres. kPa(a)	UPPER Temp. °C
161	2012/05/17	16:10:30	3648.0000	2874.04	30.23	3648.0000	2876.59	30.12
162	2012/05/18	16:10:30	3672.0000	2871.96	30.22	3672.0000	2874.53	30.12
163	2012/05/19	16:10:30	3696.0000	2870.01	30.23	3696.0000	2872.53	30.12
164	2012/05/20	16:10:30	3720.0000	2868.02	30.22	3720.0000	2870.63	30.11
165	2012/05/21	16:10:30	3744.0000	2865.68	30.23	3744.0000	2868.27	30.12
166	2012/05/22	16:10:30	3768.0000	2863.19	30.22	3768.0000	2865.75	30.11
167	2012/05/23	16:10:30	3792.0000	2860.84	30.22	3792.0000	2863.51	30.11
168	2012/05/24	16:10:30	3816.0000	2858.98	30.23	3816.0000	2861.58	30.12
169	2012/05/25	16:10:30	3840.0000	2857.38	30.23	3840.0000	2859.87	30.11
170	2012/05/26	16:10:30	3864.0000	2855.30	30.23	3864.0000	2857.91	30.12
171	2012/05/27	16:10:30	3888.0000	2852.90	30.22	3888.0000	2855.56	30.11
172	2012/05/28	16:10:30	3912.0000	2850.78	30.23	3912.0000	2853.46	30.11
173	2012/05/29	16:10:30	3936.0000	2849.25	30.22	3936.0000	2851.77	30.11
174	2012/05/30	16:10:30	3960.0000	2847.06	30.22	3960.0000	2849.68	30.12
175	2012/05/31	16:10:30	3984.0000	2845.00	30.23	3984.0000	2847.69	30.11
176	2012/06/01	16:10:30	4008.0000	2842.76	30.23	4008.0000	2845.26	30.12
177	2012/06/02	16:10:30	4032.0000	2840.51	30.23	4032.0000	2843.15	30.11
178	2012/06/03	16:10:30	4056.0000	2838.48	30.22	4056.0000	2841.18	30.11
179	2012/06/04	16:10:30	4080.0000	2836.65	30.23	4080.0000	2839.21	30.11
180	2012/06/05	16:10:30	4104.0000	2834.52	30.23	4104.0000	2837.01	30.11
181	2012/06/06	16:10:30	4128.0000	2832.49	30.23	4128.0000	2835.04	30.11
182	2012/06/07	16:10:30	4152.0000	2830.95	30.23	4152.0000	2833.59	30.11
183	2012/06/08	16:10:30	4176.0000	2829.40	30.23	4176.0000	2831.94	30.11
184	2012/06/09	16:10:30	4200.0000	2827.50	30.23	4200.0000	2830.13	30.11
185	2012/06/10	16:10:30	4224.0000	2826.20	30.22	4224.0000	2828.88	30.11
186	2012/06/11	16:10:30	4248.0000	2825.48	30.22	4248.0000	2828.03	30.11
187	2012/06/12	16:10:30	4272.0000	2823.95	30.22	4272.0000	2826.65	30.11
188	2012/06/13	16:10:30	4296.0000	2822.48	30.22	4296.0000	2825.22	30.11
189	2012/06/14	16:10:30	4320.0000	2821.27	30.22	4320.0000	2823.83	30.11
190	2012/06/15	16:10:30	4344.0000	2819.82	30.22	4344.0000	2822.49	30.11
191	2012/06/16	16:10:30	4368.0000	2818.22	30.22	4368.0000	2820.81	30.11
192	2012/06/17	16:10:30	4392.0000	2816.25	30.23	4392.0000	2818.94	30.11
193	2012/06/18	16:10:30	4416.0000	2815.01	30.22	4416.0000	2817.55	30.11
194	2012/06/19	16:10:30	4440.0000	2813.45	30.23	4440.0000	2816.21	30.11
195	2012/06/20	16:10:30	4464.0000	2812.03	30.22	4464.0000	2814.70	30.11
196	2012/06/21	16:10:30	4488.0000	2810.62	30.22	4488.0000	2813.25	30.11
197	2012/06/22	16:10:30	4512.0000	2808.79	30.22	4512.0000	2811.50	30.11
198	2012/06/23	16:10:30	4536.0000	2807.15	30.23	4536.0000	2809.74	30.11
199	2012/06/24	16:10:30	4560.0000	2805.09	30.22	4560.0000	2807.84	30.11
200	2012/06/25	16:10:30	4584.0000	2803.12	30.22	4584.0000	2805.77	30.10

LOWER Serial Number: 40461 Start Date: 2011/12/17 16:10:30 Run Depth: 952.00
UPPER Serial Number: 40458 Start Date: 2011/12/17 16:10:30 Run Depth: 951.70
Print Filter: Print every 24 hour

TUNDRA OIL & GAS PARTNERSHIP
102/12-29-008-28W1/00
Start Test Date: 2011/12/17
Final Test Date: 2012/10/09

TUNDRA DALY SINCLAIR PROV HZNTL A12-29-8-28
Formation: BAKKEN

RESERVOIR PRESSURE SURVEY

	LOWER Date yyyy/mm/dd	LOWER Clk Time hh:mm:ss	LOWER Time hr	LOWER Pres. kPa(a)	LOWER Temp. °C	UPPER Time hr	UPPER Pres. kPa(a)	UPPER Temp. °C
201	2012/06/26	16:10:30	4608.0000	2801.36	30.22	4608.0000	2804.05	30.11
202	2012/06/27	16:10:30	4632.0000	2799.97	30.23	4632.0000	2802.67	30.11
203	2012/06/28	16:10:30	4656.0000	2798.24	30.22	4656.0000	2800.84	30.11
204	2012/06/29	16:10:30	4680.0000	2796.34	30.22	4680.0000	2798.99	30.11
205	2012/06/30	16:10:30	4704.0000	2794.60	30.22	4704.0000	2797.19	30.11
206	2012/07/01	16:10:30	4728.0000	2792.82	30.22	4728.0000	2795.62	30.11
207	2012/07/02	16:10:30	4752.0000	2791.14	30.22	4752.0000	2793.84	30.11
208	2012/07/03	16:10:30	4776.0000	2789.15	30.22	4776.0000	2791.76	30.10
209	2012/07/04	16:10:30	4800.0000	2787.49	30.23	4800.0000	2790.16	30.11
210	2012/07/05	16:10:30	4824.0000	2785.94	30.23	4824.0000	2788.51	30.11
211	2012/07/06	16:10:30	4848.0000	2784.21	30.22	4848.0000	2786.90	30.11
212	2012/07/07	16:10:30	4872.0000	2782.49	30.22	4872.0000	2785.20	30.11
213	2012/07/08	16:10:30	4896.0000	2780.96	30.22	4896.0000	2783.64	30.11
214	2012/07/09	16:10:30	4920.0000	2779.29	30.21	4920.0000	2781.98	30.11
215	2012/07/10	16:10:30	4944.0000	2777.58	30.22	4944.0000	2780.37	30.10
216	2012/07/11	16:10:30	4968.0000	2775.99	30.22	4968.0000	2778.62	30.10
217	2012/07/12	16:10:30	4992.0000	2774.44	30.22	4992.0000	2777.13	30.10
218	2012/07/13	16:10:30	5016.0000	2772.97	30.22	5016.0000	2775.64	30.10
219	2012/07/14	16:10:30	5040.0000	2771.47	30.22	5040.0000	2774.17	30.10
220	2012/07/15	16:10:30	5064.0000	2769.68	30.22	5064.0000	2772.41	30.11
221	2012/07/16	16:10:30	5088.0000	2768.24	30.23	5088.0000	2770.95	30.10
222	2012/07/17	16:10:30	5112.0000	2766.82	30.22	5112.0000	2769.47	30.11
223	2012/07/18	16:10:30	5136.0000	2764.98	30.22	5136.0000	2767.75	30.11
224	2012/07/19	16:10:30	5160.0000	2762.85	30.22	5160.0000	2765.58	30.10
225	2012/07/20	16:10:30	5184.0000	2761.34	30.23	5184.0000	2764.11	30.10
226	2012/07/21	16:10:30	5208.0000	2760.02	30.23	5208.0000	2762.69	30.10
227	2012/07/22	16:10:30	5232.0000	2758.66	30.22	5232.0000	2761.45	30.10
228	2012/07/23	16:10:30	5256.0000	2757.23	30.23	5256.0000	2759.93	30.10
229	2012/07/24	16:10:30	5280.0000	2755.47	30.23	5280.0000	2758.12	30.10
230	2012/07/25	16:10:30	5304.0000	2753.41	30.22	5304.0000	2756.19	30.10
231	2012/07/26	16:10:30	5328.0000	2752.26	30.23	5328.0000	2754.96	30.10
232	2012/07/27	16:10:30	5352.0000	2750.87	30.23	5352.0000	2753.63	30.10
233	2012/07/28	16:10:30	5376.0000	2749.41	30.24	5376.0000	2752.15	30.10
234	2012/07/29	16:10:30	5400.0000	2747.83	30.22	5400.0000	2750.54	30.10
235	2012/07/30	16:10:30	5424.0000	2746.49	30.23	5424.0000	2749.10	30.10
236	2012/07/31	16:10:30	5448.0000	2744.86	30.23	5448.0000	2747.61	30.10
237	2012/08/01	16:10:30	5472.0000	2743.40	30.23	5472.0000	2746.07	30.10
238	2012/08/02	16:10:30	5496.0000	2741.91	30.22	5496.0000	2744.62	30.10
239	2012/08/03	16:10:30	5520.0000	2740.47	30.23	5520.0000	2743.16	30.10
240	2012/08/04	16:10:30	5544.0000	2739.53	30.22	5544.0000	2742.21	30.10

LOWER Serial Number: 40461 Start Date: 2011/12/17 16:10:30 Run Depth: 952.00
UPPER Serial Number: 40458 Start Date: 2011/12/17 16:10:30 Run Depth: 951.70
Print Filter: Print every 24 hour

TUNDRA OIL & GAS PARTNERSHIP
102/12-29-008-28W1/00
Start Test Date: 2011/12/17
Final Test Date: 2012/10/09

TUNDRA DALY SINCLAIR PROV HZNTL A12-29-8-28
Formation: BAKKEN

RESERVOIR PRESSURE SURVEY

	LOWER Date yyyy/mm/dd	LOWER Clk Time hh:mm:ss	LOWER Time hr	LOWER Pres. kPa(a)	LOWER Temp. °C	UPPER Time hr	UPPER Pres. kPa(a)	UPPER Temp. °C
241	2012/08/05	16:10:30	5568.0000	2738.00	30.22	5568.0000	2740.73	30.10
242	2012/08/06	16:10:30	5592.0000	2736.69	30.22	5592.0000	2739.42	30.10
243	2012/08/07	16:10:30	5616.0000	2735.38	30.22	5616.0000	2738.07	30.10
244	2012/08/08	16:10:30	5640.0000	2734.31	30.23	5640.0000	2736.99	30.10
245	2012/08/09	16:10:30	5664.0000	2733.24	30.22	5664.0000	2736.00	30.10
246	2012/08/10	16:10:30	5688.0000	2731.75	30.22	5688.0000	2734.48	30.10
247	2012/08/11	16:10:30	5712.0000	2730.43	30.23	5712.0000	2733.22	30.10
248	2012/08/12	16:10:30	5736.0000	2729.35	30.22	5736.0000	2732.19	30.10
249	2012/08/13	16:10:30	5760.0000	2728.21	30.23	5760.0000	2730.95	30.10
250	2012/08/14	16:10:30	5784.0000	2726.69	30.23	5784.0000	2729.45	30.10
251	2012/08/15	16:10:30	5808.0000	2725.86	30.23	5808.0000	2728.59	30.10
252	2012/08/16	16:10:30	5832.0000	2724.92	30.22	5832.0000	2727.66	30.10
253	2012/08/17	16:10:30	5856.0000	2723.75	30.22	5856.0000	2726.43	30.10
254	2012/08/18	16:10:30	5880.0000	2722.82	30.23	5880.0000	2725.60	30.10
255	2012/08/19	16:10:30	5904.0000	2721.65	30.22	5904.0000	2724.35	30.10
256	2012/08/20	16:10:30	5928.0000	2720.33	30.22	5928.0000	2723.11	30.10
257	2012/08/21	16:10:30	5952.0000	2719.29	30.23	5952.0000	2722.09	30.10
258	2012/08/22	16:10:30	5976.0000	2718.29	30.23	5976.0000	2721.10	30.10
259	2012/08/23	16:10:30	6000.0000	2717.30	30.23	6000.0000	2720.07	30.10
260	2012/08/24	16:10:30	6024.0000	2716.23	30.23	6024.0000	2718.97	30.10
261	2012/08/25	16:10:30	6048.0000	2715.35	30.23	6048.0000	2718.06	30.10
262	2012/08/26	16:10:30	6072.0000	2714.44	30.22	6072.0000	2717.20	30.10
263	2012/08/27	16:10:30	6096.0000	2713.43	30.23	6096.0000	2716.24	30.10
264	2012/08/28	16:10:30	6120.0000	2712.22	30.22	6120.0000	2715.02	30.10
265	2012/08/29	16:10:30	6144.0000	2710.79	30.23	6144.0000	2713.57	30.10
266	2012/08/30	16:10:30	6168.0000	2709.78	30.24	6168.0000	2712.65	30.10
267	2012/08/31	16:10:30	6192.0000	2708.76	30.23	6192.0000	2711.54	30.10
268	2012/09/01	16:10:30	6216.0000	2707.18	30.23	6216.0000	2710.02	30.10
269	2012/09/02	16:10:30	6240.0000	2705.99	30.23	6240.0000	2708.84	30.10
270	2012/09/03	16:10:30	6264.0000	2705.05	30.23	6264.0000	2707.85	30.10
271	2012/09/04	16:10:30	6288.0000	2704.06	30.23	6288.0000	2706.85	30.10
272	2012/09/05	16:10:30	6312.0000	2702.90	30.23	6312.0000	2705.62	30.10
273	2012/09/06	16:10:30	6336.0000	2702.01	30.23	6336.0000	2704.80	30.11
274	2012/09/07	16:10:30	6360.0000	2701.07	30.23	6360.0000	2703.88	30.10
275	2012/09/08	16:10:30	6384.0000	2699.97	30.22	6384.0000	2702.71	30.10
276	2012/09/09	16:10:30	6408.0000	2698.45	30.22	6408.0000	2701.25	30.10
277	2012/09/10	16:10:30	6432.0000	2697.12	30.22	6432.0000	2699.90	30.10
278	2012/09/11	16:10:30	6456.0000	2696.45	30.22	6456.0000	2699.27	30.10
279	2012/09/12	16:10:30	6480.0000	2695.64	30.23	6480.0000	2698.48	30.10
280	2012/09/13	16:10:30	6504.0000	2694.80	30.21	6504.0000	2697.56	30.10

LOWER Serial Number: 40461 Start Date: 2011/12/17 16:10:30 Run Depth: 952.00
UPPER Serial Number: 40458 Start Date: 2011/12/17 16:10:30 Run Depth: 951.70
Print Filter: Print every 24 hour

TUNDRA OIL & GAS PARTNERSHIP
102/12-29-008-28W1/00
Start Test Date: 2011/12/17
Final Test Date: 2012/10/09

TUNDRA DALY SINCLAIR PROV HZNTL A12-29-8-28
Formation: BAKKEN

RESERVOIR PRESSURE SURVEY

	LOWER Date yyyy/mm/dd	LOWER Clk Time hh:mm:ss	LOWER Time hr	LOWER Pres. kPa(a)	LOWER Temp. °C	UPPER Time hr	UPPER Pres. kPa(a)	UPPER Temp. °C
281	2012/09/14	16:10:30	6528.0000	2693.63	30.24	6528.0000	2696.35	30.10
282	2012/09/15	16:10:30	6552.0000	2692.68	30.22	6552.0000	2695.38	30.10
283	2012/09/16	16:10:30	6576.0000	2691.70	30.22	6576.0000	2694.50	30.10
284	2012/09/17	16:10:30	6600.0000	2690.67	30.22	6600.0000	2693.44	30.10
285	2012/09/18	16:10:30	6624.0000	2689.17	30.21	6624.0000	2691.97	30.10
286	2012/09/19	16:10:30	6648.0000	2688.49	30.21	6648.0000	2691.26	30.10
287	2012/09/20	16:10:30	6672.0000	2687.58	30.22	6672.0000	2690.31	30.10
288	2012/09/21	16:10:30	6696.0000	2686.81	30.22	6696.0000	2689.57	30.10
289	2012/09/22	16:10:30	6720.0000	2686.20	30.21	6720.0000	2688.92	30.10
290	2012/09/23	16:10:30	6744.0000	2685.22	30.21	6744.0000	2687.97	30.10
291	2012/09/24	16:10:30	6768.0000	2684.33	30.21	6768.0000	2687.12	30.09
292	2012/09/25	16:10:30	6792.0000	2683.89	30.21	6792.0000	2686.67	30.09
293	2012/09/26	16:10:30	6816.0000	2683.42	30.21	6816.0000	2686.19	30.10
294	2012/09/27	16:10:30	6840.0000	2682.94	30.21	6840.0000	2685.76	30.09
295	2012/09/28	16:10:30	6864.0000	2682.63	30.21	6864.0000	2685.40	30.09
296	2012/09/29	16:10:30	6888.0000	2682.10	30.21	6888.0000	2684.85	30.09
297	2012/09/30	16:10:30	6912.0000	2682.10	30.21	6912.0000	2684.89	30.09
298	2012/10/01	16:10:30	6936.0000	2681.85	30.20	6936.0000	2684.65	30.09
299	2012/10/02	16:10:30	6960.0000	2681.45	30.21	6960.0000	2684.20	30.09
300	2012/10/03	16:10:30	6984.0000	2681.93	30.20	6984.0000	2684.75	30.09
301	2012/10/04	16:10:30	7008.0000	2681.95	30.21	7008.0000	2684.80	30.09
302	2012/10/05	16:10:30	7032.0000	2682.05	30.21	7032.0000	2684.85	30.09
303	2012/10/06	16:10:30	7056.0000	2681.88	30.21	7056.0000	2684.76	30.10
304	2012/10/07	16:10:30	7080.0000	2681.34	30.20	7080.0000	2684.26	30.09
305	2012/10/08	16:10:30	7104.0000	2681.18	30.21	7104.0000	2684.07	30.08
306	2012/10/09	09:47:00	7121.6083	2681.61	30.21	7121.6083	2685.03	30.09
307	2012/10/09	09:47:00	7121.6083	FINAL PRESSURE, PREPARE TO UNSET BRIDGE PLUG				
308	2012/10/09	09:47:30	7121.6167	2681.73	30.21	7121.6167	2684.98	30.09
309	2012/10/09	10:27:00	7122.2750	2681.98	30.21	7122.2750	9247.12	28.45
310	2012/10/09	10:27:00	7122.2750	BRIDGE PLUG UNSET				
311	2012/10/09	10:27:30	7122.2833	9349.25	30.28	7122.2833	9242.28	28.37
312	2012/10/09	10:57:30	7122.7833	9139.77	28.26	7122.7833	7976.88	25.97
313	2012/10/09	10:57:30	7122.7833	PULL OUT OF HOLE				
314	2012/10/09	10:58:00	7122.7917	8920.82	28.29	7122.7917	7304.61	25.89
315	2012/10/09	13:15:30	7125.0833	88.54	5.25	7125.0833	92.05	5.57
316	2012/10/09	13:15:30	7125.0833	RECORDERS AT SURFACE				
317	2012/10/09	13:16:00	7125.0917	88.54	5.25	7125.0917	92.10	5.57
318	2012/10/09	16:10:30	7128.0000	88.54	3.96	7128.0000	91.90	3.96
319	2012/10/10	11:29:00	7147.3083	88.49	4.27	7147.3083	93.02	5.37

LOWER Serial Number: 40461 Start Date: 2011/12/17 16:10:30 Run Depth: 952.00
UPPER Serial Number: 40458 Start Date: 2011/12/17 16:10:30 Run Depth: 951.70
Print Filter: Print every 24 hour



DATE: December 17 th , 2011 - October 10 th , 2012	COMPANY: Tundra Oil & Gas Partnership
WELLNAME: Sinclair	ADDRESS: Virden, MB
LOCATION: (13C-28) A12-29-828 W1	UWI: 102.12-29-008-28W1.00
FIELD: Sinclair	FORMATION: Bakken
CO HQ REP: Craig Lane	PHONE: 1204 748 5894
FIELD REP: Brent Dalziez	PHONE: 1204 522 0864
REPORTS TO (NAME & EMAIL ADDRESS): Eric Bjornsson - eric.bjornsson@tundraoilandgas.com Tyler Routledge - tyler.routledge@tundraoilandgas.com Tim Howell - tim.howell@tundraoilandgas.com Craig Lane - craig.lane@tundraoilandgas.com Bill Jenkins - bill.jenkins@tundraoilandgas.com Adam Berke - adam.berke@tundraoilandgas.com	

STATUS: Oil well		TEST TYPE: Bridge Plug	
ESTIMATED H2S CONTENT: <10 ppm		ESTIMATED CO2 CONTENT: <10 ppm	
PRODUCING THROUGH: Tubing		SHUT IN TIME/DATE: See Description	
KOP: 897.76 mKB	TVD: 961.98 mKB		LICENCE #: 8401
PBTD: N/A	TD: mKB		WELL TYPE: Horizontal
CASING SIZE: 177.8 mm	CSG WEIGHT: 34.23 / 29.76 kg/m		CSG DEPTH: 1025 mKB
TUBING SIZE: N/A	TBG WEIGHT: N/A		TBG DEPTH: N/A
Elevations KB: 501.13 m	GRD: 496.63 m		CF: 4.50 m

PRODUCING INTERVAL

TYPE: Open Hole	SIZE: N/A	INTERVAL: 1025 - 2442 mKB
-----------------	-----------	---------------------------

RECORDER INFORMATION

TOP S/N: 40458	FILE NAME: (13C-28) A12-29-8-28 W1	RANGE: 0 - 10,340 kpa
BOTTOM S/N: 40461	FILE NAME: (13C-28) A12-29-8-28 W1	RANGE: 0 - 10,340 kpa
TOP BATTERY S/N: N/A	BOTTOM BATTERY S/N: N/A	
CONNECT TIME: December 17 th , 2012 16:10:30	DISCONNECT TIME: October 10 th , 2012 13:40:00	

SURFACE TEMP: 5	LEASE CONDITION: Good
WIRELINE OPERATOR: Ivory Herman	PHONE: 1306 371 5613
WIRELINE ASSISTANT: N/A	
DIRECTIONS: N/A	

DWG WELL HEAD PRESSURES:

TUBING (before survey): N/A	CASING (before survey): N/A
TUBING (after survey): N/A	CASING (after survey): N/A

FLUID LEVEL: N/A	RUN DEPTH: See Description
TIME ON BOTTOM: See Description	TIME OFF BOTTOM: See Description

GRADIENT STOPS

DEPTH mKB:	N/A	FROM:	N/A	UNTIL:	N/A
------------	-----	-------	-----	--------	-----

COMMENTS: Tools were ran in the well by a drilling rig to collect the BHP + BHT below a bridge plug. Tools were than pulled by a service rig.

DESCRIPTION OF WORK DONE:

Tools were ran in the well by a drilling rig to collect the BHP + BHT below a bridge plug. Tools were than pulled by a service rig.

December 17th, 2011

16:10:30 - Run in hole

17:11:30 - On bottom

17:25:30 - Bridge plug set @950 mKB

October 9th, 2012

11:27:00 - FINAL STABLE BHP + BHT

11:27:30 - Bridge plug un-set

11:57:30 - POOH

14:15:30 - Surface

October 10th, 2012

13:40:00 - Download data



TUNDRA OIL & GAS PARTNERSHIP

SINCLAIR DOWNSPACING (5-28) HZ 12-29-8-28

103/12-29-008-28W1/00

LICENSE #: 8402

BAKKEN FORMATION

Open Hole: 1008.76 – 2419.00 mKBMD
(886.27 – 895.10 TVD)

RESERVOIR PRESSURE SURVEY DATA
DECEMBER 9th, 2011 - JANUARY 13th, 2012

Prepared by: **DOLLCO Well Data Services**
e-mail: dollco@shaw.ca

PO Box 326
417A Mississippian Drive
Estevan, SK
S4A 2A4

Cell: (306) 421 - 7330
Fax: (306) 634 - 7976
Res: (306) 634 - 8761

E-mail: qualityw@sasktel.net

Pressure Survey Report

Company Information

Company Name	TUNDRA OIL & GAS PARTNERSHIP
Contact	CRAIG LANE
e-mail	Craig.Lane@tundraoilandgas.com
Phone	1-204-748-5894
Site Contact	SCOTT MURRAY
Site Phone	1-306-482-7216

Well Information

Well Name	SINCLAIR DOWNSPACING (5-28) HZ 12-29-8-28
Unique Well ID	103/12-29-008-28W1/00
Surface Location	5-28 / 12-29-8-28W1
Well License Number	8402
Well Type	Horizontal
Well Fluid Type	01 Oil
Field	SINCLAIR DOWNSPACING

KB Elevation (SL)	499.33 m
CF Elevation (SL)	494.92 m
GL Elevation (SL)	494.83 m
Distance from KB to CF (Log)	4.41 m
KB-GL Offset	4.50 m

Tubing ID	mm
Tubing OD	mm
Tubing Depth(Log KB)	m
Tubing Depth(TVD KB)	m
Casing ID	mm
Casing OD	177.8 mm
Casing Depth(Log KB)	1008.76 m
Casing Depth(TVD KB)	886.27 m
PBTD(Log KB)	m
PBTD(TVD KB)	m

Pressure Survey Report

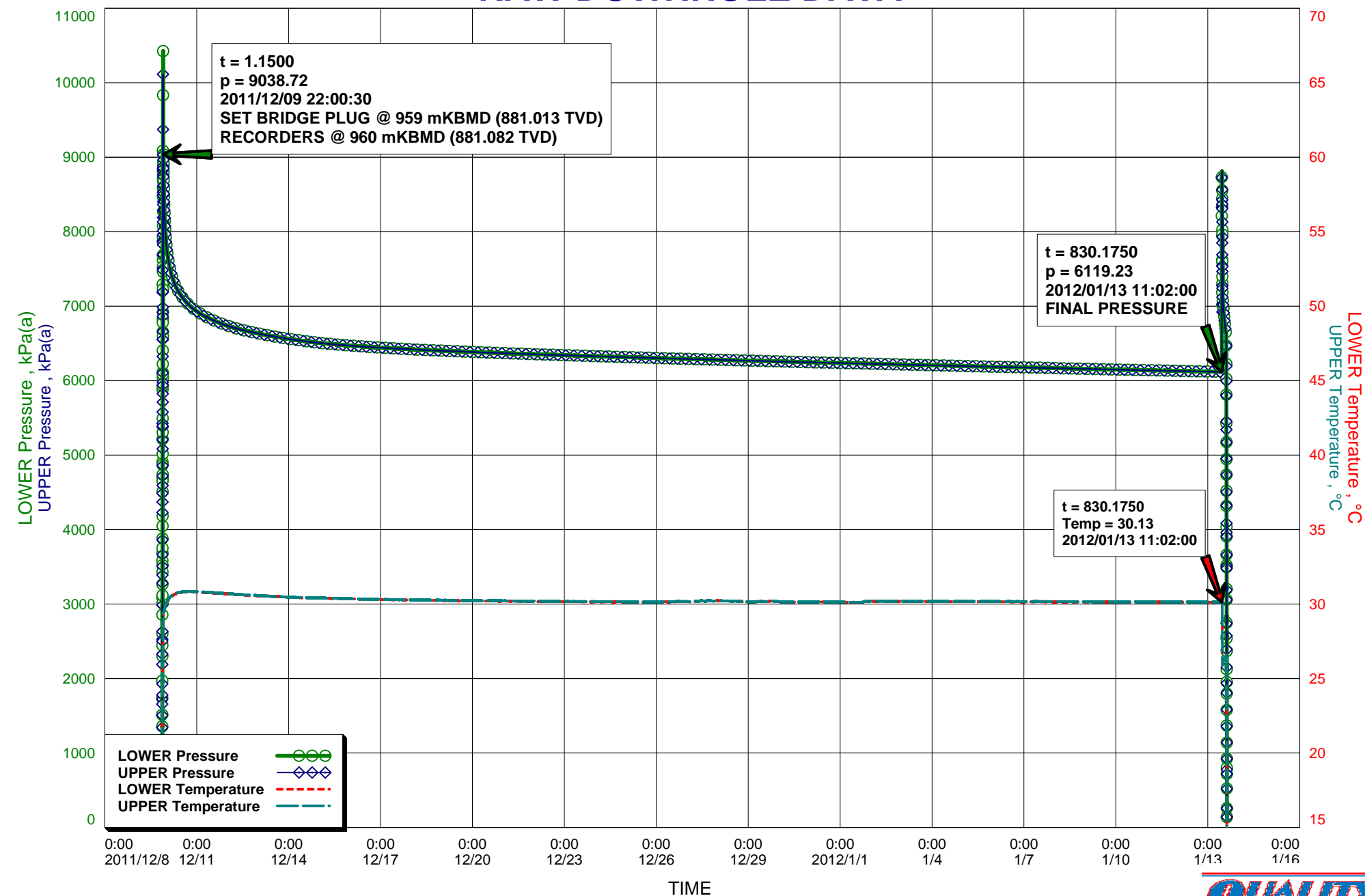
Test Information

Well Name	SINCLAIR DOWNSPACING (5-28) HZ 12-29-8-28
Unique Well ID	103/12-29-008-28W1/00
Surface Location	5-28 / 12-29-8-28W1
Well License Number	8402
Well Fluid Type	01 Oil
Test Purpose	Initial Test
Test Type	RESERVOIR PRESSURE SURVEY
Formation	BAKKEN
Pool	OH: 1008.76 - 2419.00 mKBMD
Well Type Indicator	Horizontal
Test/Prod. Interval Top KB (Log)	1008.76 m
Test/Prod. Interval Base KB (Log)	2419.00 m
Test/Prod Interval Top KB (TVD)	886.27 m
Test/Prod. Interval Base m KB (TVD)	895.10 m
MPP(Log KB)	1713.88 m
MPP(TVD KB)	890.69 m
Date/Time Gauge on Bottom	2011/12/09 21:45:00
Date/Time Gauge Off Bottom	2012/01/13 11:02:00
Time/Date Well Shut-In	2011/12/09 22:00:30
Tubing Pressure Initial	93.01 kPa(a)
Casing Pressure Initial	93.01 kPa(a)
Tubing Pressure: Final	93.01 kPa(a)
Casing Pressure: Final	93.01 kPa(a)
Last Measured Pressure at Run Depth	6119.23 kPa(a)
Reservoir Temperature	30.13 °C
Service Company	Quality Wireline Services Ltd.
Representative	BART ROYAN
Prepared By	DOLLCO Well Data Services
Qualified By	RICK DOLL
Report Date	2012/01/19

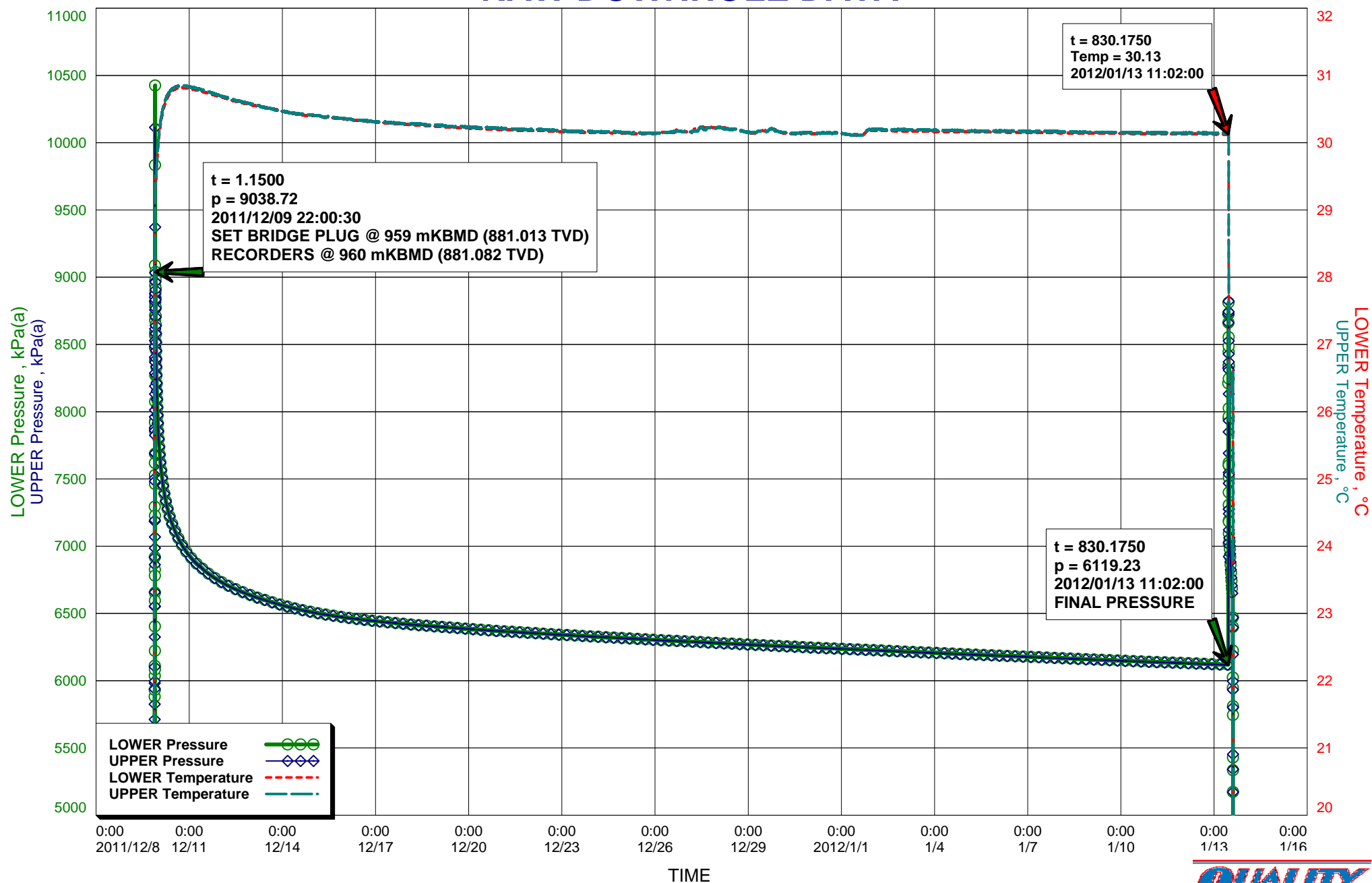
TOOLS WERE RUN IN THE WELL BELOW A BRIDGE PLUG
OPEN HOLE INTERVAL: 1008.76 - 2419.00 mKBMD (886.27 - 895.10 TVD)



RAW DOWNHOLE DATA



RAW DOWNHOLE DATA



Recorder Information

Company Name	TUNDRA OIL & GAS PARTNERSHIP
Unique Well ID	103/12-29-008-28W1/00
Well Name	SINCLAIR DOWNSPACING (5-28) HZ 12-29-8-28
Formation	BAKKEN
Start Test Date	2011/12/09
Final Test Date	2012/01/13

Gauge 1

Gauge Name	LOWER	Gauge Type	ELECTRONIC
Gauge Serial Number	40506	Gauge Manufacturer	REAL TIME MEASUREMENTS
Run Depth (Log KB)	960.00 m	Gauge Model	KC2 STRAIN
Date of Last Calibration	2010/02/17	Maximum Recorder Range	20680.00 kPa
Gauge Start Date	2011/12/09	Gauge Start Time	20:51:30
Gauge Stop Date	2012/01/13	Gauge Stop Time	15:16:00
Date Gauge On Bottom	2011/12/09	Time Gauge On Bottom	21:45:00
Date Gauge Off Bottom	2012/01/13	Time Gauge Off Bottom	11:02:00

Gauge 2

Gauge Name	UPPER	Gauge Type	ELECTRONIC
Gauge Serial Number	40433	Gauge Manufacturer	REAL TIME MEASUREMENTS
Run Depth (Log KB)	959.70 m	Gauge Model	KC2 STRAIN
Date of Last Calibration	2011/09/14	Maximum Recorder Range	20680.00 kPa
Gauge Start Date	2011/12/09	Gauge Start Time	20:51:30
Gauge Stop Date	2012/01/13	Gauge Stop Time	15:16:00
Date Gauge On Bottom	2011/12/09	Time Gauge On Bottom	21:45:00
Date Gauge Off Bottom	2012/01/13	Time Gauge Off Bottom	11:02:00

TUNDRA OIL & GAS PARTNERSHIP

103/12-29-008-28W1/00

Start Test Date: 2011/12/09

Final Test Date: 2012/01/13

SINCLAIR DOWNSPACING (5-28) HZ 12-29-8-28

Formation: BAKKEN

RESERVOIR PRESSURE SURVEY

Pool: OH: 1008.76 - 2419.00 mKBMD

	LOWER Date yyyy/mm/dd	LOWER Clk Time hh:mm:ss	LOWER Time hr	LOWER Pres. kPa(a)	LOWER Temp. °C	UPPER Time hr	UPPER Pres. kPa(a)	UPPER Temp. °C
1	2011/12/09	20:55:30	0.0667	483.32	14.24	0.0667	975.12	20.22
2	2011/12/09	20:55:30	0.0667	TRIGGER ACTIVATE RECORDERS S/N: 40506(L) & 40433(U)				
3	2011/12/09	20:56:00	0.0750	399.98	15.90	0.0750	973.57	20.50
4	2011/12/09	21:45:00	0.8917	8782.98	29.29	0.8917	8776.73	29.33
5	2011/12/09	21:45:00	0.8917	TOOLS ON BOTTOM @ 960 mKBMD (881.082 TVD)				
6	2011/12/09	21:45:30	0.9000	8793.01	29.30	0.9000	8775.62	29.34
7	2011/12/09	22:00:30	1.1500	9038.72	29.40	1.1500	8851.79	29.44
8	2011/12/09	22:00:30	1.1500	SET BRIDGE PLUG @ 959 mKBMD (881.013 TVD)				
9	2011/12/09	22:01:00	1.1583	8980.06	29.40	1.1583	8850.53	29.44
10	2011/12/09	23:55:30	3.0667	7895.43	29.92	3.0667	7874.16	29.98
11	2011/12/10	02:55:30	6.0667	7517.56	30.40	6.0667	7511.64	30.44
12	2011/12/10	05:55:30	9.0667	7336.04	30.62	9.0667	7332.25	30.65
13	2011/12/10	08:55:30	12.0667	7220.20	30.73	12.0667	7217.28	30.76
14	2011/12/10	11:55:30	15.0667	7140.29	30.79	15.0667	7137.52	30.81
15	2011/12/10	14:55:30	18.0667	7072.49	30.81	18.0750	7070.12	30.84
16	2011/12/10	17:55:30	21.0667	7017.78	30.82	21.0750	7015.51	30.84
17	2011/12/10	20:55:30	24.0667	6971.81	30.81	24.0750	6969.76	30.84
18	2011/12/10	23:55:30	27.0667	6932.54	30.80	27.0750	6930.59	30.83
19	2011/12/11	02:55:30	30.0667	6898.87	30.80	30.0750	6896.72	30.83
20	2011/12/11	05:55:30	33.0667	6868.89	30.78	33.0750	6867.07	30.81
21	2011/12/11	08:55:30	36.0667	6846.83	30.77	36.0750	6844.86	30.80
22	2011/12/11	11:55:30	39.0667	6819.01	30.75	39.0750	6817.37	30.77
23	2011/12/11	14:55:30	42.0667	6796.77	30.73	42.0750	6794.95	30.75
24	2011/12/11	17:55:30	45.0667	6775.89	30.72	45.0750	6774.42	30.73
25	2011/12/11	20:55:30	48.0667	6756.86	30.70	48.0750	6755.13	30.72
26	2011/12/11	23:55:30	51.0667	6739.02	30.68	51.0750	6737.81	30.70
27	2011/12/12	02:55:30	54.0667	6722.84	30.67	54.0750	6721.35	30.68
28	2011/12/12	05:55:30	57.0667	6707.78	30.65	57.0750	6706.04	30.66
29	2011/12/12	08:55:30	60.0667	6693.57	30.63	60.0750	6692.05	30.65
30	2011/12/12	11:55:30	63.0667	6680.27	30.62	63.0750	6678.73	30.63
31	2011/12/12	14:55:30	66.0667	6668.09	30.61	66.0750	6666.36	30.62
32	2011/12/12	17:55:30	69.0667	6656.33	30.59	69.0750	6654.90	30.60
33	2011/12/12	20:55:30	72.0667	6645.02	30.57	72.0750	6643.60	30.59
34	2011/12/12	23:55:30	75.0667	6634.43	30.56	75.0750	6632.95	30.58
35	2011/12/13	02:55:30	78.0667	6623.83	30.55	78.0750	6622.49	30.56
36	2011/12/13	05:55:30	81.0667	6614.31	30.54	81.0750	6612.58	30.55
37	2011/12/13	08:55:30	84.0667	6605.05	30.54	84.0750	6603.25	30.53
38	2011/12/13	11:55:30	87.0667	6595.52	30.52	87.0750	6594.24	30.51
39	2011/12/13	14:55:30	90.0667	6586.76	30.51	90.0750	6585.21	30.51
40	2011/12/13	17:55:30	93.0667	6578.53	30.50	93.0750	6576.92	30.49

LOWER Serial Number: 40506 Start Date: 2011/12/09 20:51:30 Run Depth: 960.00

UPPER Serial Number: 40433 Start Date: 2011/12/09 20:51:30 Run Depth: 959.70

Print Filter: Print every 3 hour

TUNDRA OIL & GAS PARTNERSHIP

103/12-29-008-28W1/00

Start Test Date: 2011/12/09

Final Test Date: 2012/01/13

SINCLAIR DOWNSPACING (5-28) HZ 12-29-8-28

Formation: BAKKEN

RESERVOIR PRESSURE SURVEY

Pool: OH: 1008.76 - 2419.00 mKBMD

	LOWER Date yyyy/mm/dd	LOWER Clk Time hh:mm:ss	LOWER Time hr	LOWER Pres. kPa(a)	LOWER Temp. °C	UPPER Time hr	UPPER Pres. kPa(a)	UPPER Temp. °C
41	2011/12/13	20:55:30	96.0667	6570.02	30.49	96.0750	6568.40	30.48
42	2011/12/13	23:55:30	99.0667	6561.76	30.47	99.0750	6560.24	30.47
43	2011/12/14	02:55:30	102.0667	6553.85	30.45	102.0750	6552.33	30.46
44	2011/12/14	05:55:30	105.0667	6546.43	30.44	105.0750	6545.07	30.44
45	2011/12/14	08:55:30	108.0667	6539.61	30.43	108.0750	6537.95	30.44
46	2011/12/14	11:55:30	111.0667	6532.64	30.42	111.0750	6531.06	30.43
47	2011/12/14	14:55:30	114.0667	6525.98	30.41	114.0750	6524.52	30.42
48	2011/12/14	17:55:30	117.0667	6520.00	30.40	117.0750	6518.49	30.41
49	2011/12/14	20:55:30	120.0667	6514.05	30.40	120.0750	6512.43	30.41
50	2011/12/14	23:55:30	123.0667	6508.08	30.40	123.0750	6506.74	30.41
51	2011/12/15	02:55:30	126.0667	6502.94	30.40	126.0750	6501.28	30.40
52	2011/12/15	05:55:30	129.0667	6497.77	30.38	129.0833	6496.34	30.39
53	2011/12/15	08:55:30	132.0667	6493.17	30.38	132.0833	6491.56	30.37
54	2011/12/15	11:55:30	135.0667	6488.45	30.38	135.0833	6487.09	30.39
55	2011/12/15	14:55:30	138.0667	6484.03	30.37	138.0833	6482.37	30.38
56	2011/12/15	17:55:30	141.0667	6479.67	30.36	141.0833	6477.96	30.37
57	2011/12/15	20:55:30	144.0667	6475.58	30.36	144.0833	6474.09	30.37
58	2011/12/15	23:55:30	147.0667	6471.38	30.35	147.0833	6469.92	30.36
59	2011/12/16	02:55:30	150.0667	6467.43	30.34	150.0833	6465.95	30.35
60	2011/12/16	05:55:30	153.0667	6464.07	30.34	153.0833	6462.44	30.34
61	2011/12/16	08:55:30	156.0667	6460.31	30.33	156.0833	6458.90	30.34
62	2011/12/16	11:55:30	159.0667	6456.92	30.33	159.0833	6455.64	30.34
63	2011/12/16	14:55:30	162.0667	6453.28	30.32	162.0833	6452.10	30.33
64	2011/12/16	17:55:30	165.0667	6450.14	30.32	165.0833	6448.73	30.33
65	2011/12/16	20:55:30	168.0667	6446.58	30.31	168.0833	6445.39	30.32
66	2011/12/16	23:55:30	171.0667	6443.72	30.30	171.0833	6442.20	30.31
67	2011/12/17	02:55:30	174.0667	6440.55	30.30	174.0833	6439.38	30.31
68	2011/12/17	05:55:30	177.0667	6437.63	30.30	177.0833	6436.43	30.30
69	2011/12/17	08:55:30	180.0667	6434.99	30.29	180.0833	6433.71	30.29
70	2011/12/17	11:55:30	183.0667	6432.07	30.29	183.0833	6430.84	30.30
71	2011/12/17	14:55:30	186.0667	6429.16	30.28	186.0833	6428.21	30.30
72	2011/12/17	17:55:30	189.0667	6426.56	30.28	189.0833	6425.33	30.29
73	2011/12/17	20:55:30	192.0667	6423.59	30.28	192.0833	6422.43	30.28
74	2011/12/17	23:55:30	195.0667	6421.01	30.27	195.0833	6419.88	30.28
75	2011/12/18	02:55:30	198.0667	6418.39	30.27	198.0833	6417.23	30.28
76	2011/12/18	05:55:30	201.0667	6415.88	30.27	201.0833	6414.96	30.27
77	2011/12/18	08:55:30	204.0667	6413.64	30.26	204.0833	6412.50	30.28
78	2011/12/18	11:55:30	207.0667	6411.33	30.26	207.0833	6410.16	30.28
79	2011/12/18	14:55:30	210.0667	6409.45	30.26	210.0833	6408.08	30.26
80	2011/12/18	17:55:30	213.0667	6406.71	30.25	213.0833	6405.64	30.26

LOWER Serial Number: 40506 Start Date: 2011/12/09 20:51:30 Run Depth: 960.00

UPPER Serial Number: 40433 Start Date: 2011/12/09 20:51:30 Run Depth: 959.70

Print Filter: Print every 3 hour

TUNDRA OIL & GAS PARTNERSHIP

103/12-29-008-28W1/00

Start Test Date: 2011/12/09

Final Test Date: 2012/01/13

SINCLAIR DOWNSPACING (5-28) HZ 12-29-8-28

Formation: BAKKEN

RESERVOIR PRESSURE SURVEY

Pool: OH: 1008.76 - 2419.00 mKBMD

	LOWER Date yyyy/mm/dd	LOWER Clk Time hh:mm:ss	LOWER Time hr	LOWER Pres. kPa(a)	LOWER Temp. °C	UPPER Time hr	UPPER Pres. kPa(a)	UPPER Temp. °C
81	2011/12/18	20:55:30	216.0667	6404.57	30.25	216.0833	6403.49	30.26
82	2011/12/18	23:55:30	219.0667	6402.52	30.24	219.0833	6401.61	30.25
83	2011/12/19	02:55:30	222.0667	6400.52	30.24	222.0833	6399.48	30.26
84	2011/12/19	05:55:30	225.0667	6398.62	30.24	225.0833	6397.37	30.25
85	2011/12/19	08:55:30	228.0667	6396.30	30.23	228.0833	6395.30	30.24
86	2011/12/19	11:55:30	231.0667	6394.39	30.23	231.0833	6393.04	30.23
87	2011/12/19	14:55:30	234.0667	6392.04	30.23	234.0833	6391.12	30.24
88	2011/12/19	17:55:30	237.0667	6389.66	30.22	237.0833	6388.73	30.24
89	2011/12/19	20:55:30	240.0667	6387.45	30.22	240.0833	6386.42	30.24
90	2011/12/19	23:55:30	243.0667	6385.52	30.22	243.0833	6384.49	30.23
91	2011/12/20	02:55:30	246.0667	6383.31	30.21	246.0833	6382.27	30.23
92	2011/12/20	05:55:30	249.0667	6381.38	30.21	249.0833	6380.34	30.23
93	2011/12/20	08:55:30	252.0667	6379.03	30.20	252.0833	6378.20	30.22
94	2011/12/20	11:55:30	255.0667	6377.39	30.21	255.0833	6376.25	30.23
95	2011/12/20	14:55:30	258.0667	6375.20	30.20	258.0917	6374.22	30.22
96	2011/12/20	17:55:30	261.0667	6373.13	30.20	261.0917	6372.20	30.22
97	2011/12/20	20:55:30	264.0667	6371.23	30.20	264.0917	6370.07	30.22
98	2011/12/20	23:55:30	267.0667	6369.46	30.20	267.0917	6368.27	30.21
99	2011/12/21	02:55:30	270.0667	6367.70	30.19	270.0917	6366.72	30.20
100	2011/12/21	05:55:30	273.0667	6366.16	30.19	273.0917	6364.92	30.21
101	2011/12/21	08:55:30	276.0667	6364.26	30.19	276.0917	6363.10	30.20
102	2011/12/21	11:55:30	279.0667	6362.46	30.19	279.0917	6361.66	30.20
103	2011/12/21	14:55:30	282.0667	6360.94	30.19	282.0917	6359.72	30.20
104	2011/12/21	17:55:30	285.0667	6359.23	30.18	285.0917	6358.01	30.20
105	2011/12/21	20:55:30	288.0667	6357.23	30.18	288.0917	6356.11	30.20
106	2011/12/21	23:55:30	291.0667	6355.44	30.18	291.0917	6354.32	30.20
107	2011/12/22	02:55:30	294.0667	6353.79	30.18	294.0917	6352.63	30.19
108	2011/12/22	05:55:30	297.0667	6352.24	30.18	297.0917	6351.02	30.20
109	2011/12/22	08:55:30	300.0667	6350.64	30.18	300.0917	6349.52	30.19
110	2011/12/22	11:55:30	303.0667	6348.88	30.18	303.0917	6347.87	30.19
111	2011/12/22	14:55:30	306.0667	6347.16	30.17	306.0917	6346.10	30.19
112	2011/12/22	17:55:30	309.0667	6345.43	30.17	309.0917	6344.27	30.19
113	2011/12/22	20:55:30	312.0667	6343.41	30.17	312.0917	6342.29	30.18
114	2011/12/22	23:55:30	315.0667	6341.54	30.16	315.0917	6340.42	30.18
115	2011/12/23	02:55:30	318.0667	6339.99	30.16	318.0917	6338.89	30.18
116	2011/12/23	05:55:30	321.0667	6338.57	30.16	321.0917	6337.40	30.16
117	2011/12/23	08:55:30	324.0667	6336.91	30.16	324.0917	6336.04	30.16
118	2011/12/23	11:55:30	327.0667	6335.38	30.16	327.0917	6334.11	30.17
119	2011/12/23	14:55:30	330.0667	6333.82	30.16	330.0917	6332.39	30.17
120	2011/12/23	17:55:30	333.0667	6331.89	30.15	333.0917	6330.92	30.17

LOWER Serial Number: 40506 Start Date: 2011/12/09 20:51:30 Run Depth: 960.00

UPPER Serial Number: 40433 Start Date: 2011/12/09 20:51:30 Run Depth: 959.70

Print Filter: Print every 3 hour

TUNDRA OIL & GAS PARTNERSHIP

103/12-29-008-28W1/00

Start Test Date: 2011/12/09

Final Test Date: 2012/01/13

SINCLAIR DOWNSPACING (5-28) HZ 12-29-8-28

Formation: BAKKEN

RESERVOIR PRESSURE SURVEY

Pool: OH: 1008.76 - 2419.00 mKBMD

	LOWER Date yyyy/mm/dd	LOWER Clk Time hh:mm:ss	LOWER Time hr	LOWER Pres. kPa(a)	LOWER Temp. °C	UPPER Time hr	UPPER Pres. kPa(a)	UPPER Temp. °C
121	2011/12/23	20:55:30	336.0667	6330.42	30.15	336.0917	6329.19	30.17
122	2011/12/23	23:55:30	339.0667	6328.50	30.15	339.0917	6327.42	30.17
123	2011/12/24	02:55:30	342.0667	6327.11	30.15	342.0917	6326.06	30.16
124	2011/12/24	05:55:30	345.0667	6325.72	30.15	345.0917	6324.59	30.16
125	2011/12/24	08:55:30	348.0667	6324.12	30.15	348.0917	6323.09	30.16
126	2011/12/24	11:55:30	351.0667	6322.49	30.15	351.0917	6321.52	30.17
127	2011/12/24	14:55:30	354.0667	6320.81	30.15	354.0917	6319.86	30.16
128	2011/12/24	17:55:30	357.0667	6319.60	30.15	357.0917	6318.33	30.16
129	2011/12/24	20:55:30	360.0667	6318.13	30.15	360.0917	6316.67	30.16
130	2011/12/24	23:55:30	363.0667	6316.55	30.14	363.0917	6315.13	30.15
131	2011/12/25	02:55:30	366.0667	6315.10	30.14	366.0917	6313.75	30.15
132	2011/12/25	05:55:30	369.0667	6313.56	30.14	369.0917	6312.35	30.14
133	2011/12/25	08:55:30	372.0667	6312.15	30.13	372.0917	6310.83	30.15
134	2011/12/25	11:55:30	375.0667	6310.49	30.13	375.0917	6309.36	30.14
135	2011/12/25	14:55:30	378.0667	6308.93	30.14	378.0917	6307.74	30.14
136	2011/12/25	17:55:30	381.0667	6307.52	30.14	381.0917	6306.01	30.14
137	2011/12/25	20:55:30	384.0667	6305.75	30.14	384.0917	6304.37	30.14
138	2011/12/25	23:55:30	387.0667	6304.07	30.14	387.0917	6302.75	30.14
139	2011/12/26	02:55:30	390.0667	6301.97	30.15	390.0917	6300.87	30.14
140	2011/12/26	05:55:30	393.0667	6300.85	30.16	393.0917	6299.49	30.15
141	2011/12/26	08:55:30	396.0667	6299.10	30.15	396.0917	6298.05	30.15
142	2011/12/26	11:55:30	399.0667	6298.14	30.15	399.0917	6296.64	30.16
143	2011/12/26	14:55:30	402.0667	6296.62	30.15	402.0917	6295.21	30.17
144	2011/12/26	17:55:30	405.0667	6295.60	30.19	405.0917	6294.08	30.17
145	2011/12/26	20:55:30	408.0667	6293.89	30.16	408.0917	6292.84	30.17
146	2011/12/26	23:55:30	411.0667	6292.51	30.16	411.0917	6291.18	30.17
147	2011/12/27	02:55:30	414.0667	6291.11	30.15	414.0917	6289.81	30.16
148	2011/12/27	05:55:30	417.0667	6289.97	30.19	417.0917	6288.54	30.17
149	2011/12/27	08:55:30	420.0667	6288.36	30.18	420.0917	6287.15	30.17
150	2011/12/27	11:55:30	423.0667	6286.93	30.23	423.0917	6285.61	30.23
151	2011/12/27	14:55:30	426.0667	6285.02	30.22	426.0917	6283.87	30.19
152	2011/12/27	17:55:30	429.0667	6283.69	30.23	429.0917	6282.48	30.22
153	2011/12/27	20:55:30	432.0667	6282.18	30.22	432.0917	6281.10	30.20
154	2011/12/27	23:55:30	435.0667	6280.63	30.22	435.0917	6279.28	30.22
155	2011/12/28	02:55:30	438.0667	6279.43	30.22	438.0917	6277.71	30.23
156	2011/12/28	05:55:30	441.0667	6277.87	30.22	441.0917	6276.62	30.20
157	2011/12/28	08:55:30	444.0667	6276.62	30.21	444.0917	6275.15	30.20
158	2011/12/28	11:55:30	447.0667	6275.08	30.20	447.0917	6273.55	30.19
159	2011/12/28	14:55:30	450.0667	6273.46	30.20	450.0917	6272.16	30.19
160	2011/12/28	17:55:30	453.0667	6272.13	30.19	453.0917	6270.74	30.18

LOWER Serial Number: 40506 Start Date: 2011/12/09 20:51:30 Run Depth: 960.00

UPPER Serial Number: 40433 Start Date: 2011/12/09 20:51:30 Run Depth: 959.70

Print Filter: Print every 3 hour

TUNDRA OIL & GAS PARTNERSHIP

103/12-29-008-28W1/00

Start Test Date: 2011/12/09

Final Test Date: 2012/01/13

SINCLAIR DOWNSPACING (5-28) HZ 12-29-8-28

Formation: BAKKEN

RESERVOIR PRESSURE SURVEY

Pool: OH: 1008.76 - 2419.00 mKBMD

	LOWER Date yyyy/mm/dd	LOWER Clk Time hh:mm:ss	LOWER Time hr	LOWER Pres. kPa(a)	LOWER Temp. °C	UPPER Time hr	UPPER Pres. kPa(a)	UPPER Temp. °C
161	2011/12/28	20:55:30	456.0667	6270.64	30.16	456.0917	6269.34	30.16
162	2011/12/28	23:55:30	459.0667	6269.23	30.15	459.0917	6268.01	30.16
163	2011/12/29	02:55:30	462.0667	6268.07	30.14	462.0917	6266.47	30.15
164	2011/12/29	05:55:30	465.0667	6266.53	30.15	465.0917	6265.23	30.15
165	2011/12/29	08:55:30	468.0667	6265.30	30.17	468.0917	6263.74	30.17
166	2011/12/29	11:55:30	471.0667	6263.84	30.18	471.0917	6262.26	30.17
167	2011/12/29	14:55:30	474.0667	6262.25	30.19	474.0917	6260.74	30.17
168	2011/12/29	17:55:30	477.0667	6261.05	30.21	477.0917	6259.52	30.21
169	2011/12/29	20:55:30	480.0667	6259.70	30.19	480.0917	6258.18	30.17
170	2011/12/29	23:55:30	483.0667	6257.98	30.16	483.0917	6257.00	30.16
171	2011/12/30	02:55:30	486.0667	6256.98	30.14	486.0917	6255.58	30.16
172	2011/12/30	05:55:30	489.0667	6255.85	30.14	489.0917	6254.33	30.15
173	2011/12/30	08:55:30	492.0667	6254.59	30.13	492.0917	6253.19	30.15
174	2011/12/30	11:55:30	495.0667	6252.98	30.13	495.0917	6251.56	30.13
175	2011/12/30	14:55:30	498.0667	6251.80	30.12	498.0917	6250.14	30.15
176	2011/12/30	17:55:30	501.0667	6250.22	30.15	501.0917	6248.87	30.14
177	2011/12/30	20:55:30	504.0667	6248.46	30.14	504.0917	6247.29	30.15
178	2011/12/30	23:55:30	507.0667	6247.37	30.14	507.0917	6245.91	30.14
179	2011/12/31	02:55:30	510.0667	6245.95	30.13	510.0917	6244.45	30.14
180	2011/12/31	05:55:30	513.0667	6244.60	30.13	513.0917	6243.16	30.14
181	2011/12/31	08:55:30	516.0667	6243.71	30.14	516.0917	6242.06	30.15
182	2011/12/31	11:55:30	519.0667	6242.22	30.14	519.0917	6240.95	30.14
183	2011/12/31	14:55:30	522.0667	6241.23	30.14	522.0917	6239.83	30.15
184	2011/12/31	17:55:30	525.0667	6240.04	30.15	525.0917	6238.43	30.14
185	2011/12/31	20:55:30	528.0667	6238.85	30.14	528.0917	6237.36	30.15
186	2011/12/31	23:55:30	531.0667	6237.38	30.13	531.0917	6235.94	30.14
187	2012/01/01	02:55:30	534.0667	6236.37	30.13	534.0917	6234.65	30.13
188	2012/01/01	05:55:30	537.0667	6235.15	30.12	537.0917	6233.69	30.12
189	2012/01/01	08:55:30	540.0667	6233.89	30.11	540.0917	6232.75	30.11
190	2012/01/01	11:55:30	543.0667	6232.79	30.11	543.0917	6231.31	30.12
191	2012/01/01	14:55:30	546.0667	6231.45	30.11	546.0917	6230.05	30.12
192	2012/01/01	17:55:30	549.0667	6230.48	30.14	549.0917	6228.85	30.14
193	2012/01/01	20:55:30	552.0667	6228.84	30.18	552.0917	6227.59	30.19
194	2012/01/01	23:55:30	555.0667	6227.70	30.18	555.0917	6226.40	30.20
195	2012/01/02	02:55:30	558.0667	6226.81	30.18	558.0917	6225.30	30.20
196	2012/01/02	05:55:30	561.0667	6225.39	30.18	561.0917	6224.04	30.20
197	2012/01/02	08:55:30	564.0667	6224.23	30.18	564.0917	6222.63	30.20
198	2012/01/02	11:55:30	567.0667	6223.15	30.18	567.0917	6221.30	30.19
199	2012/01/02	14:55:30	570.0667	6221.54	30.18	570.0917	6219.95	30.19
200	2012/01/02	17:55:30	573.0667	6220.27	30.18	573.0917	6218.48	30.19

LOWER Serial Number: 40506 Start Date: 2011/12/09 20:51:30 Run Depth: 960.00

UPPER Serial Number: 40433 Start Date: 2011/12/09 20:51:30 Run Depth: 959.70

Print Filter: Print every 3 hour

TUNDRA OIL & GAS PARTNERSHIP

103/12-29-008-28W1/00

Start Test Date: 2011/12/09

Final Test Date: 2012/01/13

SINCLAIR DOWNSPACING (5-28) HZ 12-29-8-28

Formation: BAKKEN

RESERVOIR PRESSURE SURVEY

Pool: OH: 1008.76 - 2419.00 mKBMD

	LOWER Date yyyy/mm/dd	LOWER Clk Time hh:mm:ss	LOWER Time hr	LOWER Pres. kPa(a)	LOWER Temp. °C	UPPER Time hr	UPPER Pres. kPa(a)	UPPER Temp. °C
201	2012/01/02	20:55:30	576.0667	6218.52	30.17	576.0917	6216.93	30.19
202	2012/01/02	23:55:30	579.0667	6217.21	30.17	579.0917	6215.57	30.20
203	2012/01/03	02:55:30	582.0667	6215.80	30.17	582.0917	6214.14	30.19
204	2012/01/03	05:55:30	585.0667	6214.75	30.17	585.0917	6213.03	30.19
205	2012/01/03	08:55:30	588.0667	6213.22	30.17	588.0917	6211.67	30.19
206	2012/01/03	11:55:30	591.0667	6212.14	30.17	591.0917	6210.58	30.19
207	2012/01/03	14:55:30	594.0667	6211.32	30.17	594.0917	6209.39	30.19
208	2012/01/03	17:55:30	597.0667	6209.93	30.17	597.0917	6208.28	30.19
209	2012/01/03	20:55:30	600.0667	6208.80	30.17	600.0917	6206.95	30.18
210	2012/01/03	23:55:30	603.0667	6207.33	30.16	603.0917	6205.76	30.19
211	2012/01/04	02:55:30	606.0667	6206.26	30.16	606.0917	6204.51	30.18
212	2012/01/04	05:55:30	609.0667	6204.92	30.17	609.0917	6203.19	30.18
213	2012/01/04	08:55:30	612.0667	6203.86	30.17	612.0917	6201.93	30.18
214	2012/01/04	11:55:30	615.0667	6202.35	30.16	615.0917	6200.78	30.18
215	2012/01/04	14:55:30	618.0667	6201.31	30.16	618.0917	6199.58	30.18
216	2012/01/04	17:55:30	621.0667	6199.88	30.16	621.0917	6198.23	30.18
217	2012/01/04	20:55:30	624.0667	6198.60	30.16	624.0917	6196.75	30.18
218	2012/01/04	23:55:30	627.0667	6197.06	30.16	627.0917	6195.49	30.17
219	2012/01/05	02:55:30	630.0667	6195.93	30.16	630.0917	6194.18	30.17
220	2012/01/05	05:55:30	633.0667	6194.76	30.16	633.0917	6193.26	30.18
221	2012/01/05	08:55:30	636.0667	6193.50	30.16	636.0917	6191.91	30.18
222	2012/01/05	11:55:30	639.0667	6192.21	30.16	639.0917	6190.69	30.18
223	2012/01/05	14:55:30	642.0667	6191.13	30.16	642.0917	6189.34	30.18
224	2012/01/05	17:55:30	645.0667	6189.76	30.16	645.0917	6188.23	30.17
225	2012/01/05	20:55:30	648.0667	6188.36	30.16	648.0917	6186.92	30.17
226	2012/01/05	23:55:30	651.0667	6187.41	30.16	651.0917	6185.84	30.17
227	2012/01/06	02:55:30	654.0667	6186.19	30.16	654.0917	6184.80	30.18
228	2012/01/06	05:55:30	657.0667	6185.50	30.16	657.0917	6183.76	30.18
229	2012/01/06	08:55:30	660.0667	6184.25	30.16	660.0917	6182.45	30.17
230	2012/01/06	11:55:30	663.0667	6182.89	30.16	663.0917	6181.43	30.18
231	2012/01/06	14:55:30	666.0667	6182.32	30.16	666.0917	6180.43	30.17
232	2012/01/06	17:55:30	669.0667	6180.73	30.15	669.0917	6179.27	30.17
233	2012/01/06	20:55:30	672.0667	6179.61	30.15	672.0917	6177.66	30.17
234	2012/01/06	23:55:30	675.0667	6178.28	30.15	675.0917	6176.70	30.17
235	2012/01/07	02:55:30	678.0667	6177.27	30.15	678.0917	6175.50	30.16
236	2012/01/07	05:55:30	681.0667	6176.11	30.15	681.0917	6174.79	30.17
237	2012/01/07	08:55:30	684.0667	6175.14	30.15	684.0917	6173.34	30.17
238	2012/01/07	11:55:30	687.0667	6173.73	30.15	687.0917	6172.06	30.17
239	2012/01/07	14:55:30	690.0667	6172.06	30.15	690.0917	6170.65	30.18
240	2012/01/07	17:55:30	693.0667	6171.05	30.15	693.0917	6169.56	30.17

LOWER Serial Number: 40506 Start Date: 2011/12/09 20:51:30 Run Depth: 960.00

UPPER Serial Number: 40433 Start Date: 2011/12/09 20:51:30 Run Depth: 959.70

Print Filter: Print every 3 hour

TUNDRA OIL & GAS PARTNERSHIP

103/12-29-008-28W1/00

Start Test Date: 2011/12/09

Final Test Date: 2012/01/13

SINCLAIR DOWNSPACING (5-28) HZ 12-29-8-28

Formation: BAKKEN

RESERVOIR PRESSURE SURVEY

Pool: OH: 1008.76 - 2419.00 mKBMD

	LOWER Date yyyy/mm/dd	LOWER Clk Time hh:mm:ss	LOWER Time hr	LOWER Pres. kPa(a)	LOWER Temp. °C	UPPER Time hr	UPPER Pres. kPa(a)	UPPER Temp. °C
241	2012/01/07	20:55:30	696.0667	6169.88	30.15	696.0917	6168.32	30.17
242	2012/01/07	23:55:30	699.0667	6168.74	30.15	699.0917	6166.85	30.17
243	2012/01/08	02:55:30	702.0667	6167.37	30.14	702.0917	6165.88	30.16
244	2012/01/08	05:55:30	705.0667	6166.26	30.15	705.0917	6164.65	30.15
245	2012/01/08	08:55:30	708.0667	6165.36	30.15	708.0917	6163.51	30.16
246	2012/01/08	11:55:30	711.0667	6163.55	30.14	711.0917	6162.17	30.16
247	2012/01/08	14:55:30	714.0667	6162.83	30.15	714.0917	6160.98	30.15
248	2012/01/08	17:55:30	717.0667	6161.31	30.14	717.0917	6159.68	30.15
249	2012/01/08	20:55:30	720.0667	6159.93	30.14	720.0917	6158.29	30.16
250	2012/01/08	23:55:30	723.0667	6158.79	30.14	723.0917	6157.15	30.16
251	2012/01/09	02:55:30	726.0667	6157.82	30.14	726.0917	6156.08	30.16
252	2012/01/09	05:55:30	729.0667	6156.73	30.14	729.0917	6154.99	30.16
253	2012/01/09	08:55:30	732.0667	6155.63	30.14	732.0917	6153.91	30.16
254	2012/01/09	11:55:30	735.0667	6154.43	30.14	735.0917	6152.73	30.15
255	2012/01/09	14:55:30	738.0667	6153.39	30.14	738.0917	6151.67	30.15
256	2012/01/09	17:55:30	741.0667	6152.23	30.14	741.0917	6150.44	30.16
257	2012/01/09	20:55:30	744.0667	6150.95	30.14	744.0917	6148.96	30.15
258	2012/01/09	23:55:30	747.0667	6149.46	30.14	747.0917	6147.75	30.15
259	2012/01/10	02:55:30	750.0667	6148.12	30.14	750.0917	6146.52	30.15
260	2012/01/10	05:55:30	753.0667	6147.41	30.14	753.0917	6145.48	30.15
261	2012/01/10	08:55:30	756.0667	6145.92	30.14	756.0917	6144.45	30.14
262	2012/01/10	11:55:30	759.0667	6144.68	30.14	759.0917	6143.13	30.15
263	2012/01/10	14:55:30	762.0667	6143.67	30.13	762.0917	6142.15	30.15
264	2012/01/10	17:55:30	765.0667	6142.74	30.14	765.0917	6141.03	30.15
265	2012/01/10	20:55:30	768.0667	6141.50	30.13	768.0917	6139.96	30.15
266	2012/01/10	23:55:30	771.0667	6140.47	30.14	771.0917	6138.72	30.14
267	2012/01/11	02:55:30	774.0667	6139.69	30.13	774.0917	6137.77	30.15
268	2012/01/11	05:55:30	777.0667	6138.59	30.13	777.0917	6136.65	30.14
269	2012/01/11	08:55:30	780.0667	6137.53	30.13	780.0917	6135.91	30.15
270	2012/01/11	11:55:30	783.0667	6136.46	30.13	783.0917	6134.71	30.15
271	2012/01/11	14:55:30	786.0667	6135.32	30.13	786.0917	6133.46	30.14
272	2012/01/11	17:55:30	789.0667	6134.39	30.13	789.0917	6132.58	30.15
273	2012/01/11	20:55:30	792.0667	6133.05	30.13	792.0917	6131.55	30.14
274	2012/01/11	23:55:30	795.0667	6131.96	30.13	795.0917	6130.31	30.14
275	2012/01/12	02:55:30	798.0667	6130.76	30.13	798.0917	6129.06	30.14
276	2012/01/12	05:55:30	801.0667	6129.56	30.13	801.0917	6128.07	30.15
277	2012/01/12	08:55:30	804.0667	6128.59	30.13	804.0917	6127.09	30.15
278	2012/01/12	11:55:30	807.0667	6127.61	30.13	807.0917	6125.79	30.14
279	2012/01/12	14:55:30	810.0667	6126.35	30.13	810.0917	6124.53	30.15
280	2012/01/12	17:55:30	813.0667	6124.99	30.13	813.0917	6123.56	30.15

LOWER Serial Number: 40506 Start Date: 2011/12/09 20:51:30 Run Depth: 960.00

UPPER Serial Number: 40433 Start Date: 2011/12/09 20:51:30 Run Depth: 959.70

Print Filter: Print every 3 hour

TUNDRA OIL & GAS PARTNERSHIP

103/12-29-008-28W1/00

Start Test Date: 2011/12/09

Final Test Date: 2012/01/13

SINCLAIR DOWNSPACING (5-28) HZ 12-29-8-28

Formation: BAKKEN

Pool: OH: 1008.76 - 2419.00 mKBMD

RESERVOIR PRESSURE SURVEY

	LOWER Date yyyy/mm/dd	LOWER Clk Time hh:mm:ss	LOWER Time hr	LOWER Pres. kPa(a)	LOWER Temp. °C	UPPER Time hr	UPPER Pres. kPa(a)	UPPER Temp. °C
281	2012/01/12	20:55:30	816.0667	6124.16	30.13	816.0917	6122.30	30.14
282	2012/01/12	23:55:30	819.0667	6122.66	30.13	819.0917	6121.17	30.14
283	2012/01/13	02:55:30	822.0667	6121.64	30.13	822.0917	6119.87	30.14
284	2012/01/13	05:55:30	825.0667	6120.43	30.13	825.0917	6118.97	30.14
285	2012/01/13	08:55:30	828.0667	6119.70	30.13	828.0917	6117.80	30.15
286	2012/01/13	11:02:00	830.1750	6119.23	30.13	830.1750	6117.41	30.14
287	2012/01/13	11:02:00	830.1750	FINAL PRESSURE, UNSET BRIDGE PLUG.				
288	2012/01/13	11:02:30	830.1833	8211.30	30.17	830.1833	8324.04	30.18
289	2012/01/13	11:07:00	830.2583	8711.25	30.16	830.2583	8714.60	30.16
290	2012/01/13	11:07:00	830.2583	BRIDGE PLUG UNSET				
291	2012/01/13	11:07:30	830.2667	8724.40	30.16	830.2667	8720.91	30.14
292	2012/01/13	11:20:00	830.4750	8685.46	30.03	830.4750	8689.23	30.03
293	2012/01/13	11:20:00	830.4750	RECORDERS OFF BOTTOM.				
294	2012/01/13	11:20:30	830.4833	8445.13	29.97	830.4833	8428.57	29.97
295	2012/01/13	11:55:30	831.0667	7049.84	26.16	831.0917	7042.44	26.16
296	2012/01/13	14:55:30	834.0667	1368.25	13.46	834.0917	778.31	12.45
297	2012/01/13	15:14:00	834.3750	102.61	8.28	834.3750	106.65	8.63
298	2012/01/13	15:14:00	834.3750	RECORDERS AT SURFACE				
299	2012/01/13	15:14:30	834.3833	117.99	7.90	834.3833	106.33	8.32
300	2012/01/13	15:16:00	834.4083	111.98	7.19	834.4083	112.29	7.41

LOWER Serial Number: 40506 Start Date: 2011/12/09 20:51:30 Run Depth: 960.00

UPPER Serial Number: 40433 Start Date: 2011/12/09 20:51:30 Run Depth: 959.70

Print Filter: Print every 3 hour



DATE: Dec 9, 2011 - Jan 13, 2012	COMPANY: Tundra Oil & Gas Partnership
WELLNAME: Sinclair Downspacing (5-28) Hz 12-29-8-28WPM	ADDRESS: Virden, MB
LOCATION: 5-28/12-29-8-28WPM	UWI: 103.12-29-008-28W1.00
FIELD: Sinclair Downspacing	FORMATION: Bakken
CO HQ REP: Craig Lane	PHONE: (204)748-4409
FIELD REP: Scott Murray	PHONE: (306)482-7216
REPORTS TO (NAME & EMAIL ADDRESS): Eric Bjornsson - eric.bjornsson@tundraoilandgas.com Tyler Routledge - tyler.routledge@tundraoilandgas.com Tim Howell - tim.howell@tundraoilandgas.com Craig Lane - craig.lane@tundraoilandgas.com Bill Jenkins - bill.jenkins@tundraoilandgas.com Adam Berke - adam.berke@tundraoilandgas.com Shawn Blaschuk - shawn.blaschuk@tundraoilandgas.com Josh Porter - josh.porter@tundraoilandgas.com	

STATUS: oil well		TEST TYPE: build up
ESTIMATED H2S CONTENT: <10 ppm		ESTIMATED CO2 CONTENT: 0%
PRODUCING THROUGH: tubing		SHUT IN TIME/DATE: 22:01 Dec 9, 2011
KOP: 697 mKB	TVD: see survey	LICENCE #: 8402
PBTD: n/a	TD: 2419 mKB	WELL TYPE: horizontal
CASING SIZE: 177.8 mm	CSG WEIGHT: 34.23 / 29.76 kg/m	CSG DEPTH: 1008.76 mKB
TUBING SIZE: none	TBG WEIGHT: n/a	TBG DEPTH: n/a
Elevations KB: 499.33 m	GRD: 494.83 m	CF: 494.92 m

PRODUCING INTERVAL

TYPE: open hole	SIZE: 159 mm	INTERVAL: 1008.76 - 2419 mKB
-----------------	--------------	------------------------------

RECORDER INFORMATION

TOP S/N: 40433	FILE NAME: 5-28-12-29-8-28w1	RANGE: 20,680 kPa
BOTTOM S/N: 40506	FILE NAME: 5-28-12-29-8-28w1	RANGE: 20,680 kPa
TOP BATTERY S/N: n/a	BOTTOM BATTERY S/N: n/a	
CONNECT TIME: 20:55 Dec 9, 2011	DISCONNECT TIME: 15:23 Jan 13, 2012	

SURFACE TEMP: -4 C	LEASE CONDITION: good
WIRELINE OPERATOR: Bart Royan	PHONE: (306)421-9700
WIRELINE ASSISTANT: n/a	
DIRECTIONS: 11.4km south of HWY #2 on HWY #256, east into location	

DWG WELL HEAD PRESSURES:

TUBING (before survey): 0 kPa	CASING (before survey): 0 kPa
TUBING (after survey): 0 kPa	CASING (after survey): 0 kPa

FLUID LEVEL: n/a	RUN DEPTH: 960 mKB
TIME ON BOTTOM: 21:45 Dec 9, 2011	TIME OFF BOTTOM: 11:24 Jan 13, 2012

GRADIENT STOPS

DEPTH mKB:	none	FROM:	n/a	UNTIL:	n/a
------------	------	-------	-----	--------	-----

COMMENTS: bridge plug set at 959 mKB (CE).
--

DESCRIPTION OF WORK DONE: December 9, 2011

20:55 Pressure trigger activated while recorders were being ran into the well
below a bridge plug on pipe by the drilling rig.
21:45 Tools on bottom.
22:01 Bridge plug set, well shut in for build up.

January 13, 2012

11:07 Bridge plug unset.

11:24 Bridge plug c/w recorders are pulled from the well with tubing by the
service rig.

15:14 Recorders are at surface.

15:23 Download data from the recorders and do preliminary report.