

EWART UNIT NO. 4
WATERFLOOD EOR PROJECT
ANNUAL REPORT FOR 2013

March 21, 2014

Tundra Oil and Gas Partnership

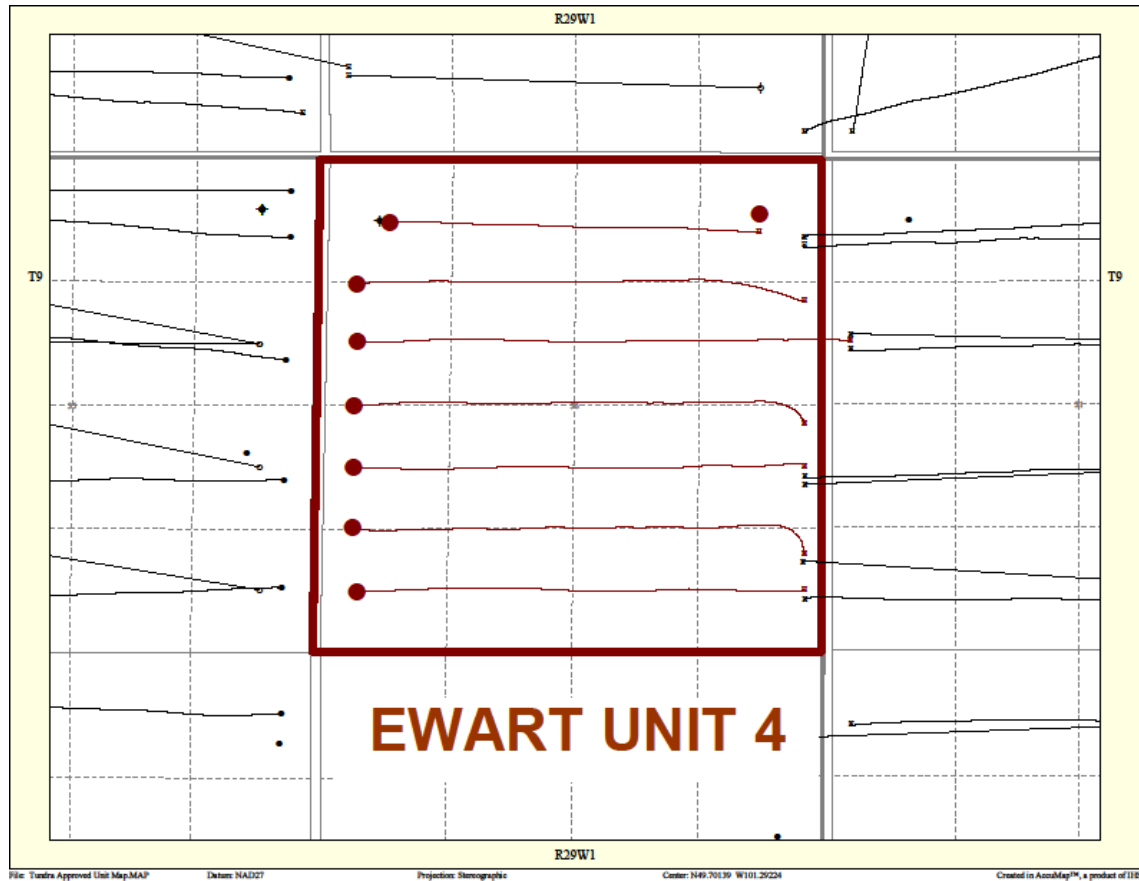
Table of Contents

Introduction	3.
Discussion	3.
Production History	3.
Waterflood Development Plan	5.
Waterflood EOR Operating Strategy and Performance	6.
Water Source and Quality	6.
Injection Wellhead Pressures	6.
Reservoir Pressure	6.
Well Servicing	6.
Waterflood Performance Discussion	6.
List of Appendices	7.
Appendix A: Ewart Unit No. 4 Well Name and Status Table	
Appendix B: Ewart Unit No. 4 Injection Pattern Summary	
Appendix C: Ewart Unit No. 4 Reservoir Pressure Summary	
Appendix D: Injector Pattern Production/Injection Rates, Cumulative and VRR Plots and Tables for the following injectors:	
102/05-36-008-29W1	
102/12-36-008-29W1	
103/12-36-008-29W1	

INTRODUCTION

Ewart Unit No. 4 was approved on August 1, 2013 with Tundra Oil and Gas (Tundra) as Operator. The Unit area contains 1 vertical and 7 horizontal producing wells in 16 LSDs in Township 8 Range 29 W1 as shown in the figure below.

Figure 1: Ewart Unit No. 4 Area Outline



In accordance with Section 73 of the Manitoba Drilling and Production Regulation, Tundra hereby submits the following 2013 Annual Progress Report for Ewart Unit No. 4.

DISCUSSION

Production History

For the wells included in Ewart Unit No. 4, production started in October 2006 with the 00/16-36-008-29W1 well. Average oil production peaked at 3.08 m³/d per well in January of 2012. This production was coming from 3 wells and totaled 24.64 m³/d for the whole

Unit. In December 2013, the Unit was producing 7.41 m³/d of oil and 16.79 m³/d of water. There is currently no water injection in Ewart Unit No. 4. The rates and WOR are presented in Figure 2.

Figure 2: Ewart Unit No. 4 Production/Injection Rates and WOR vs Time

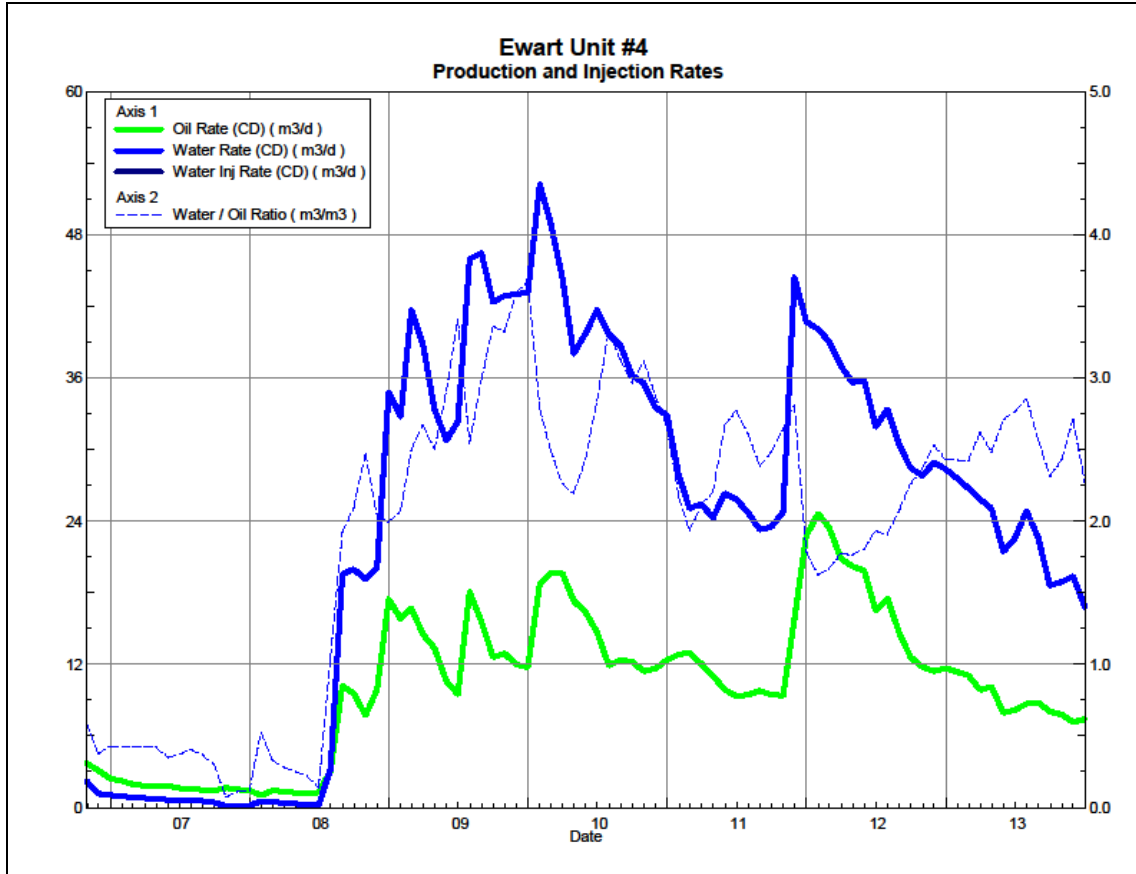
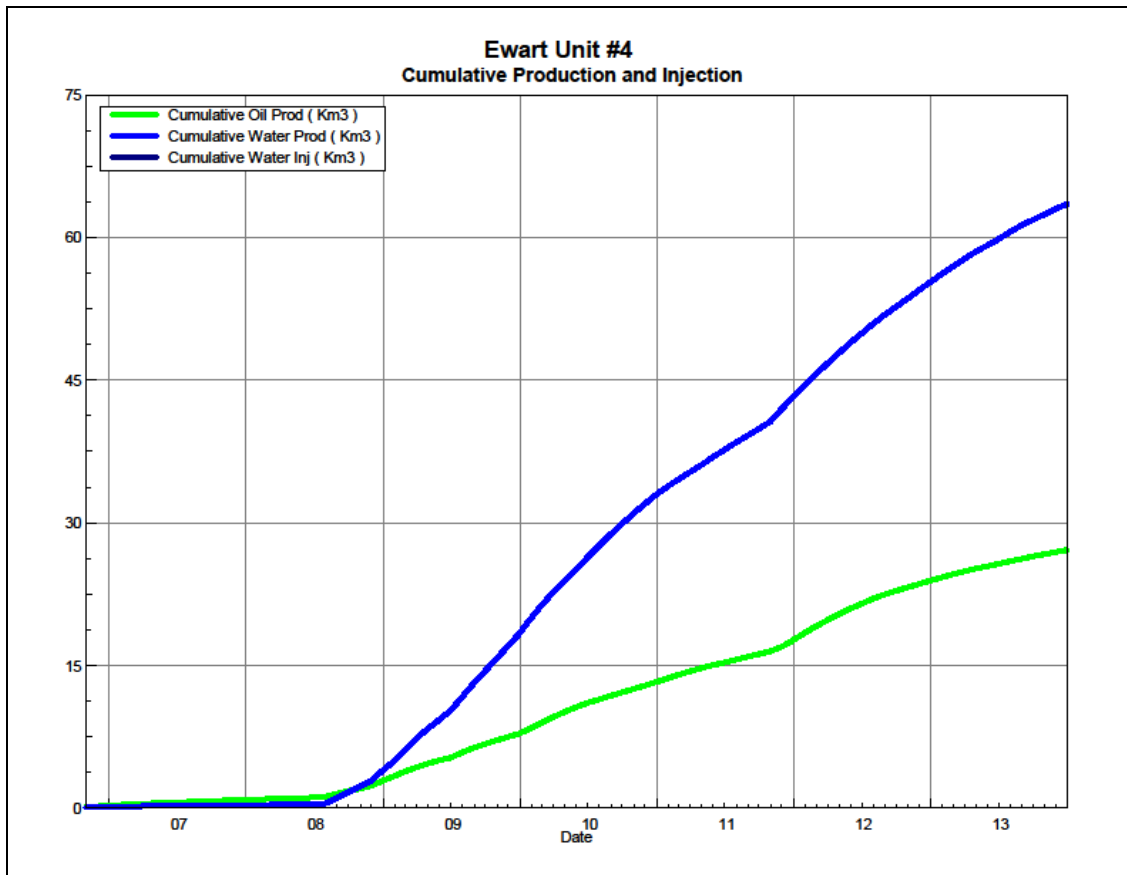


Figure 3 shows the cumulative production for Ewart Unit No. 4 to the end of December 2013 as 27.2 E³m³ of oil, and 63.5 E³m³ of water, representing a 5.1% recovery factor of the OOIP. The cumulative volume of oil, and water produced and fluid injected for each injection pattern and for the whole project for each injection well is presented in Appendix D.

Figure 3: Ewart Unit No. 4 Cumulative Oil, Water and Water Injected vs Time



Waterflood Development Plan

Ewart Unit No. 4 Waterflood (WF) Development Plan

Ewart Unit No. 4 is still in the development phase at the end of 2013. The three (3) proposed horizontal injection wells were drilled in 2011 between the existing horizontal producing wells, completing an effective 20 acre line drive waterflood pattern. In November 2011, the proposed injectors were put on production.

In order to maximize recovery from this Unit, Tundra has chosen to produce the future injectors for a short period of time to clean-up the reservoir near the wellbores. All horizontal wells are fracture stimulated to improve the injection rates.

Production performance by injector pattern are summarized in Appendix B.

Any future revisions to the waterflood development or surveillance plan would be based on new production or performance response data, technical studies, or observed reservoir behavior and reserves recovery interpretations.

Waterflood EOR Operating Strategy and Performance

Water Source and Quality

The injection water for Ewart Unit No. 4 will be sourced from the 16-32-007-29W1 well (Lodgepole formation). The water is treated at the 03-04-008-29W1 battery where it is filtered to 0.5 microns and has scale inhibitor added. The injection water is then distributed to the injectors through the dedicated infrastructure system.

Injection Wellhead Pressures

There is currently no injection in Ewart Unit No. 4.

Reservoir Pressure

Where practical, Tundra is committed to collecting pressure data from newly drilled injection wells. For Ewart Unit No. 4, pressure data is currently available for the 02/05-36, 02/12-36 and 03/12-36-008-29W1 locations. A summary table is presented in Appendix C. Pressures are corrected to a common datum of -450 m SS for comparison with other units in the area.

Well Servicing

No maintenance was required on the 8 wells in Ewart Unit No. 4 in 2013.

Waterflood Performance Discussion

At the end of 2013, there is currently no water injection in Ewart Unit No. 4. The waterflood area had 3 injection wells drilled in 2011 that are currently on production. Tundra expects to produce the future injection wells until the latter part of 2014 instead of putting them on injection right away. Therefore, there is no waterflood analysis that can be done at this time.

A summary table of the injector pattern(s) is presented in Appendix B. Plots and tables of the production are presented in Appendix D for each of the injection pattern(s).

List of Appendices

Appendix A: Ewart Unit No. 4 Well Name and Status Table

Appendix B: Ewart Unit No. 4 Injection Pattern Summary

Appendix C: Ewart Unit No. 4 Reservoir Pressure Summary

Appendix D: Injector Pattern Production/Injection Rates, Cumulative and VRR Plots and
Tables for the following injectors:

102/05-36-008-29W1

102/12-36-008-29W1

103/12-36-008-29W1

Appendix A

UWI	Surface Location	Well Status
00/04-36-008-29W1/0	01-36-008-29W1	Capable of OIL Prod
00/05-36-008-29W1/0	08-36-008-29W1	Capable of OIL Prod
02/05-36-008-29W1/0	02/01-36-008-29W1	Capable of OIL Prod
00/12-36-008-29W1/0	12-31-008-28W1	Capable of OIL Prod
02/12-36-008-29W1/0	02/08-36-008-29W1	Capable of OIL Prod
03/12-36-008-29W1/0	03/09-36-008-29W1	Capable of OIL Prod
02/13-36-008-29W1/0	16-36-008-29W1	Capable of OIL Prod
00/16-36-008-29W1/0	16-36-008-29W1	Capable of OIL Prod

Appendix B

Ewart Unit No. 4 Injection Pattern Summary as of December 2013

Pattern Name	Injector BH Location (008-29W1)	Injector Surf. Location (008-29W1)	Status	No. of Supported Wells	Supported Wells (008-29W1)	Allocation Factor	Pattern Prod Start Month	Inj Start Month	Oil Rate (m³/d)	Water Rate (m³/d)	WOR (m³/m³)	Water Injection (m³/d)	Cum Oil (E³m³)	Cum Water (E³m³)	Cum Inj Water (E³m³)	Monthly VRR	Cum VRR
02/05-36-008-29W1 Injector	02/05-36	02/01-36	Capable of Oil Production	2	04-36, 05-36	0.5	Nov 2008	-	2.2	5.3	2.44	-	6.5	18.7	-	-	-
02/12-36-008-29W1 Injector	02/12-36	02/08-36	Capable of Oil Production	2	05-36, 12-36	0.5	Jun 2009	-	1.7	4.0	2.36	-	6.4	14.7	-	-	-
03/12-36-008-29W1 Injector	03/12-36	03/09-36	Capable of Oil Production	3	12-36, 02/13-36, 16-36	0.5	Oct 2006	-	2.5	4.2	1.65	-	8.5	13.8	-	-	-

APPENDIX C

Ewart Unit No. 4 - Pressure Summary

Location	Test Date	Final Pressure (kPaa)	MPP (mTVD)	KB	Datum Depth	Gradient	Pressure @ -450 masl
102/05-36-008-29W1/00	Oct 5 - 25, 2011	6854.4	911.7	517.5	-450	8.25	7314
102/12-36-008-29W1/00	Sep 17 - 26, 2011	7060.8	911.7	517.0	-450	8.25	7517
103/12-36-008-29W1/00	Sep 26 - Oct 7, 2011	5986.4	910.9	515.6	-450	8.25	6437

Appendix D
Rates and VRR
Plots and Tables

Oil Formation Vol Factor : 1.07100 m3/m3 Pattern: 02/05-36-008-29Inj Set: EwartUnit#4

Water Formation Vol Factor : 1.00150 m3/m3

March 24, 2014

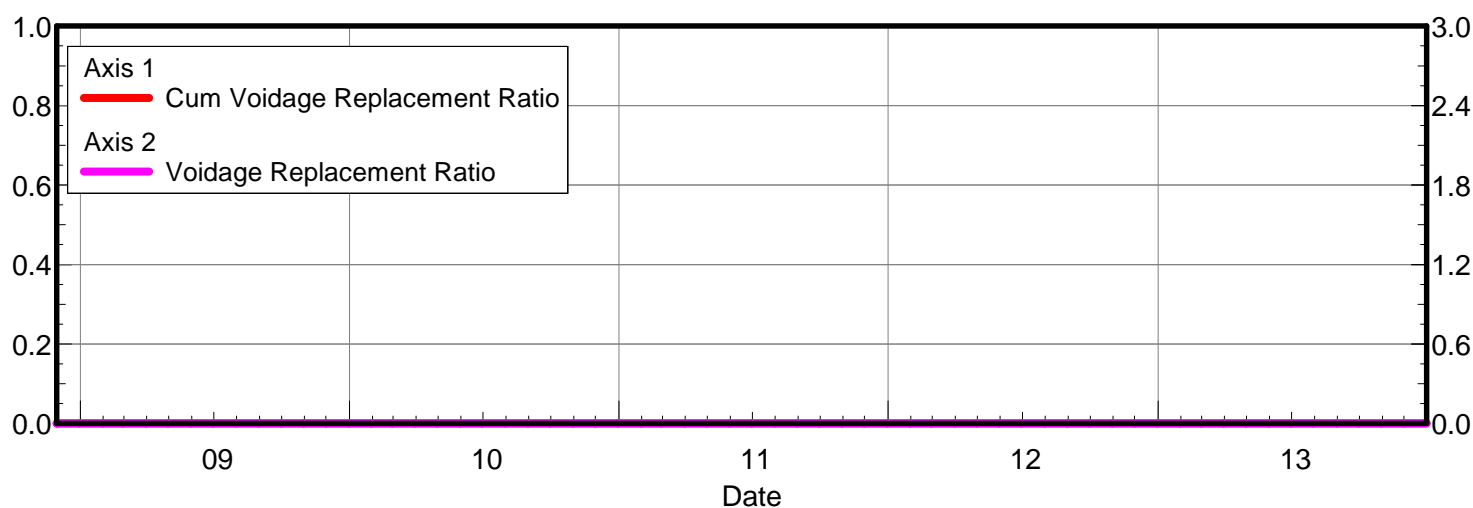
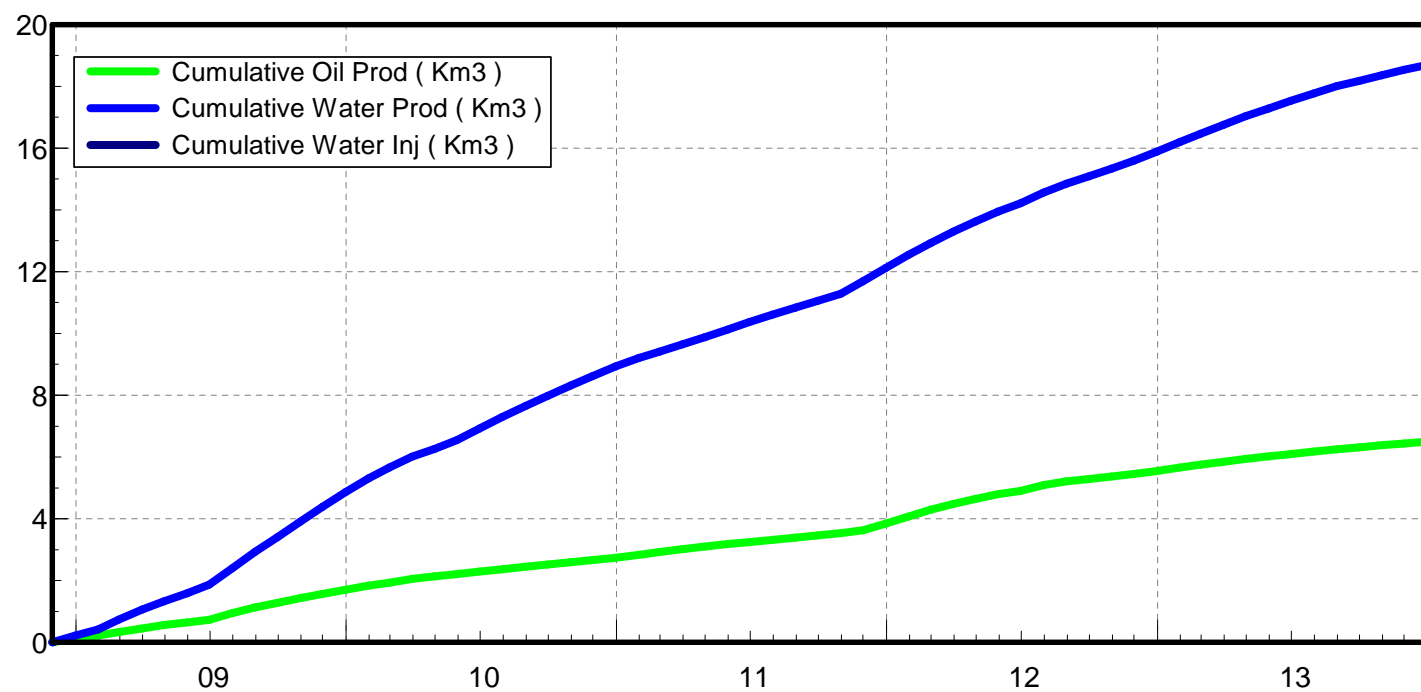
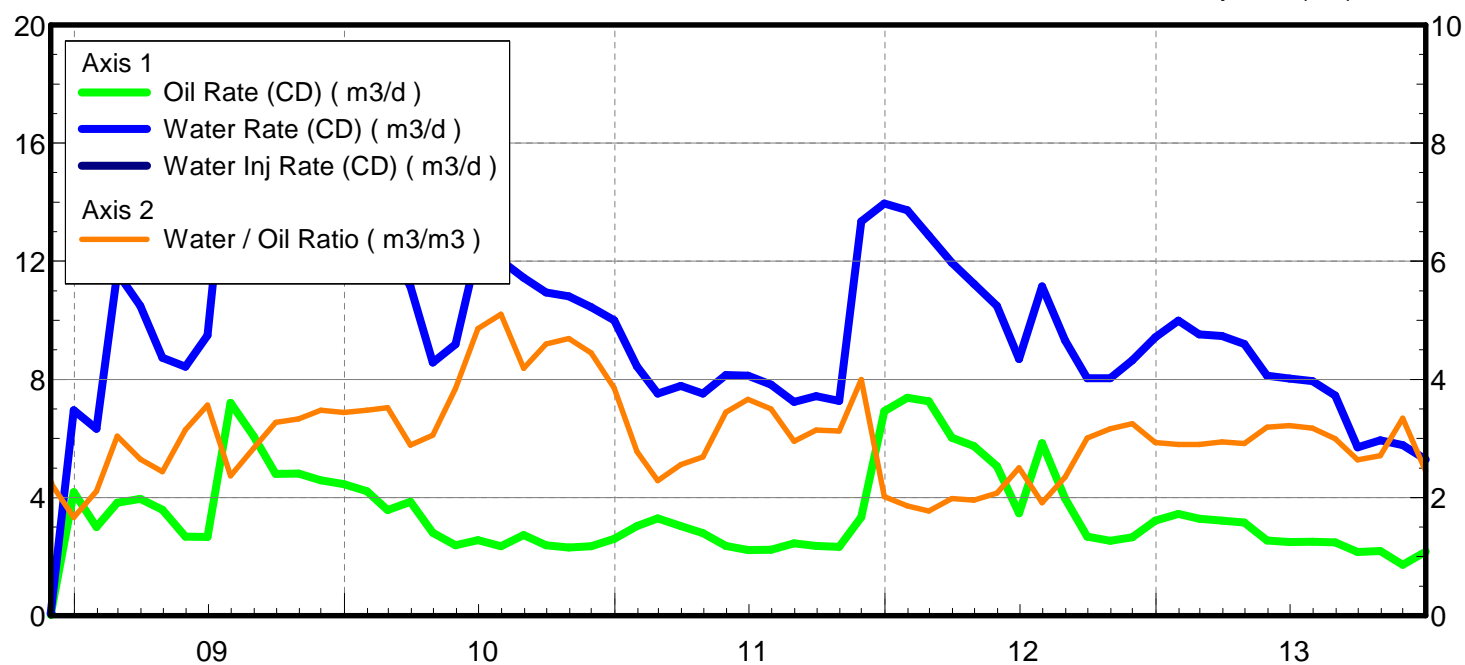
Oil Rate (CD) : 2.16 m3/d

Water Rate (CD) : 5.29 m3/d

Water / Oil Ratio : 2.44 m3/m3

Operator: Tundra_O&G_Prtshp

Water Inj Rate (CD) : * m3/d



Date	Oil Rate (CD) m3/d	Water Rate (CD) m3/d	Water Oil Ratio m3/m3	Water Inj Rate (CD) m3/d	Cum Oil Prod Km3	Cum Water Prod Km3	Cum Water Inj Km3	Voidage Replacement Ratio	Cum Voidage Replacemt Ratio
11/30/2008	0.03	0.07	2.25		0.00	0.00	0.00	0.000	0.000
12/31/2008	4.18	6.96	1.66		0.13	0.22	0.00	0.000	0.000
1/31/2009	3.00	6.32	2.11		0.22	0.41	0.00	0.000	0.000
2/28/2009	3.82	11.62	3.04		0.33	0.74	0.00	0.000	0.000
3/31/2009	3.96	10.49	2.65		0.45	1.06	0.00	0.000	0.000
4/30/2009	3.58	8.74	2.44		0.56	1.33	0.00	0.000	0.000
5/31/2009	2.68	8.43	3.15		0.64	1.59	0.00	0.000	0.000
6/30/2009	2.66	9.49	3.57		0.72	1.87	0.00	0.000	0.000
7/31/2009	7.20	17.04	2.37		0.95	2.40	0.00	0.000	0.000
8/31/2009	6.07	17.22	2.83		1.14	2.93	0.00	0.000	0.000
9/30/2009	4.79	15.70	3.27		1.28	3.41	0.00	0.000	0.000
10/31/2009	4.82	16.05	3.33		1.43	3.90	0.00	0.000	0.000
11/30/2009	4.59	15.95	3.48		1.57	4.38	0.00	0.000	0.000
12/31/2009	4.45	15.30	3.44		1.70	4.86	0.00	0.000	0.000
1/31/2010	4.21	14.64	3.48		1.83	5.31	0.00	0.000	0.000
2/28/2010	3.57	12.57	3.52		1.93	5.66	0.00	0.000	0.000
3/31/2010	3.86	11.15	2.89		2.05	6.01	0.00	0.000	0.000
4/30/2010	2.81	8.57	3.05		2.14	6.26	0.00	0.000	0.000
5/31/2010	2.39	9.19	3.85		2.21	6.55	0.00	0.000	0.000
6/30/2010	2.56	12.43	4.86		2.29	6.92	0.00	0.000	0.000
7/31/2010	2.36	12.03	5.11		2.36	7.30	0.00	0.000	0.000
8/31/2010	2.73	11.44	4.19		2.45	7.65	0.00	0.000	0.000
9/30/2010	2.38	10.94	4.60		2.52	7.98	0.00	0.000	0.000
10/31/2010	2.30	10.81	4.69		2.59	8.31	0.00	0.000	0.000
11/30/2010	2.35	10.44	4.45		2.66	8.63	0.00	0.000	0.000
12/31/2010	2.60	10.00	3.85		2.74	8.94	0.00	0.000	0.000
1/31/2011	3.03	8.44	2.78		2.83	9.20	0.00	0.000	0.000
2/28/2011	3.29	7.52	2.28		2.93	9.41	0.00	0.000	0.000
3/31/2011	3.04	7.77	2.56		3.02	9.65	0.00	0.000	0.000
4/30/2011	2.80	7.51	2.69		3.11	9.88	0.00	0.000	0.000
5/31/2011	2.36	8.14	3.44		3.18	10.13	0.00	0.000	0.000
6/30/2011	2.22	8.12	3.66		3.25	10.37	0.00	0.000	0.000
7/31/2011	2.23	7.82	3.50		3.31	10.61	0.00	0.000	0.000
8/31/2011	2.45	7.23	2.95		3.39	10.84	0.00	0.000	0.000
9/30/2011	2.37	7.43	3.14		3.46	11.06	0.00	0.000	0.000
10/31/2011	2.33	7.27	3.12		3.53	11.29	0.00	0.000	0.000
11/30/2011	3.34	13.35	4.00		3.63	11.69	0.00	0.000	0.000
12/31/2011	6.92	13.95	2.02		3.85	12.12	0.00	0.000	0.000
1/31/2012	7.38	13.73	1.86		4.08	12.54	0.00	0.000	0.000
2/29/2012	7.26	12.87	1.77		4.29	12.92	0.00	0.000	0.000
3/31/2012	6.03	11.95	1.98		4.47	13.29	0.00	0.000	0.000
4/30/2012	5.74	11.23	1.96		4.65	13.63	0.00	0.000	0.000
5/31/2012	5.05	10.48	2.07		4.80	13.95	0.00	0.000	0.000
6/30/2012	3.47	8.69	2.50		4.91	14.21	0.00	0.000	0.000
7/31/2012	5.84	11.15	1.91		5.09	14.56	0.00	0.000	0.000
8/31/2012	3.97	9.31	2.35		5.21	14.85	0.00	0.000	0.000
9/30/2012	2.67	8.04	3.01		5.29	15.09	0.00	0.000	0.000
10/31/2012	2.54	8.03	3.16		5.37	15.34	0.00	0.000	0.000

Date	Oil Rate (CD) m3/d	Water Rate (CD) m3/d	Water Oil Ratio m3/m3	Water Inj Rate (CD) m3/d	Cum Oil Prod Km3	Cum Water Prod Km3	Cum Water Inj Km3	Voidage Replacement Ratio	Cum Voidage Replacemt Ratio
11/30/2012	2.66	8.64	3.25		5.45	15.59	0.00	0.000	0.000
12/31/2012	3.22	9.43	2.93		5.55	15.89	0.00	0.000	0.000
1/31/2013	3.45	9.99	2.90		5.66	16.20	0.00	0.000	0.000
2/28/2013	3.29	9.52	2.90		5.75	16.46	0.00	0.000	0.000
3/31/2013	3.21	9.46	2.94		5.85	16.76	0.00	0.000	0.000
4/30/2013	3.16	9.20	2.91		5.94	17.03	0.00	0.000	0.000
5/31/2013	2.55	8.13	3.19		6.02	17.28	0.00	0.000	0.000
6/30/2013	2.50	8.03	3.22		6.10	17.53	0.00	0.000	0.000
7/31/2013	2.50	7.94	3.18		6.17	17.77	0.00	0.000	0.000
8/31/2013	2.49	7.45	3.00		6.25	18.00	0.00	0.000	0.000
9/30/2013	2.16	5.70	2.64		6.32	18.17	0.00	0.000	0.000
10/31/2013	2.19	5.93	2.71		6.38	18.36	0.00	0.000	0.000
11/30/2013	1.73	5.78	3.34		6.44	18.53	0.00	0.000	0.000
12/31/2013	2.16	5.29	2.44		6.50	18.69	0.00	0.000	0.000

Oil Formation Vol Factor : 1.07100 m3/m3 Pattern: 02/12-36-008-29Inj Set: EwartUnit#4

Water Formation Vol Factor : 1.00150 m3/m3

March 24, 2014

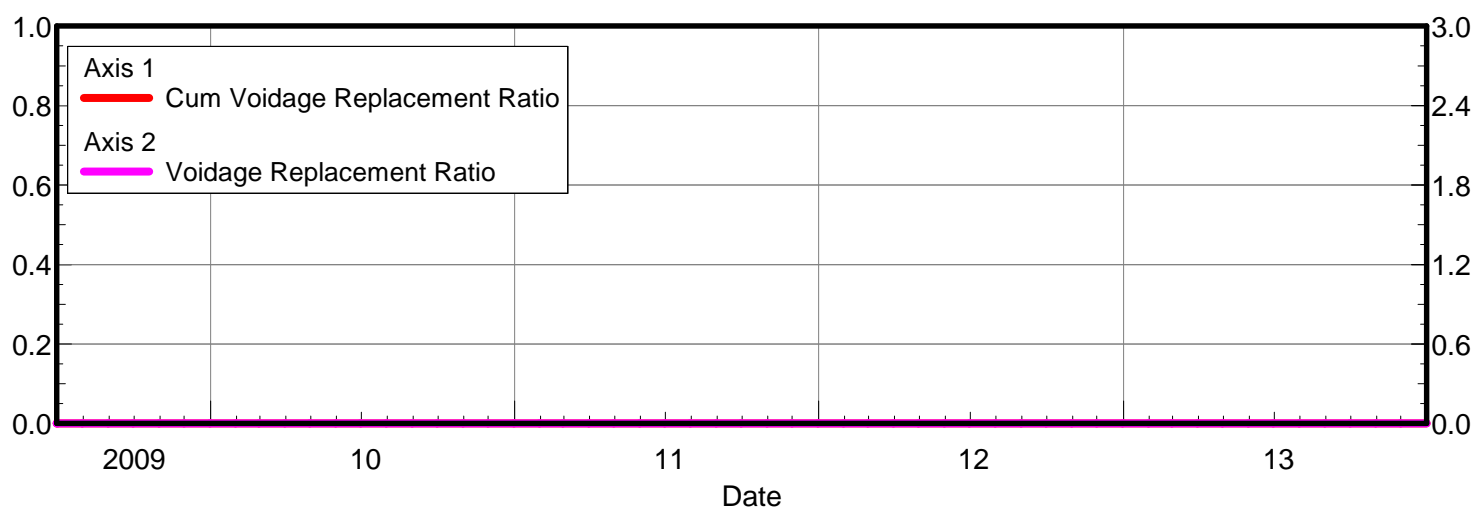
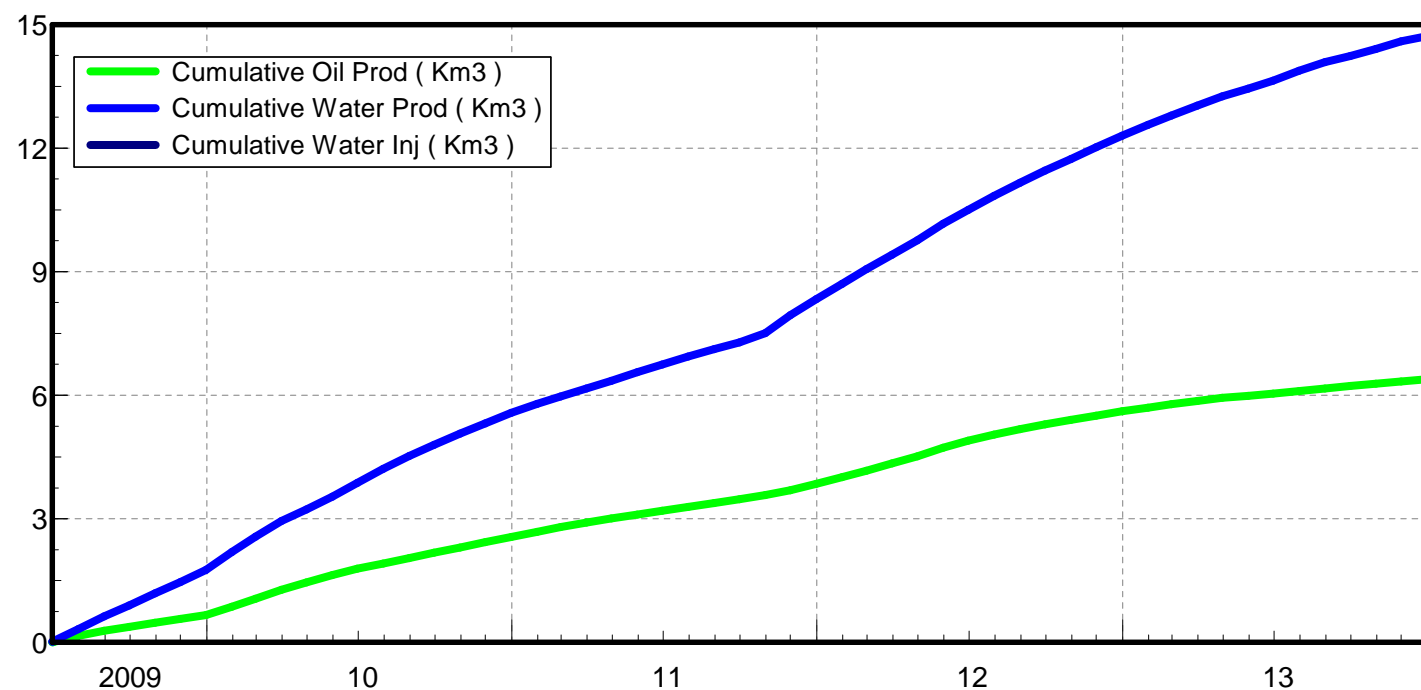
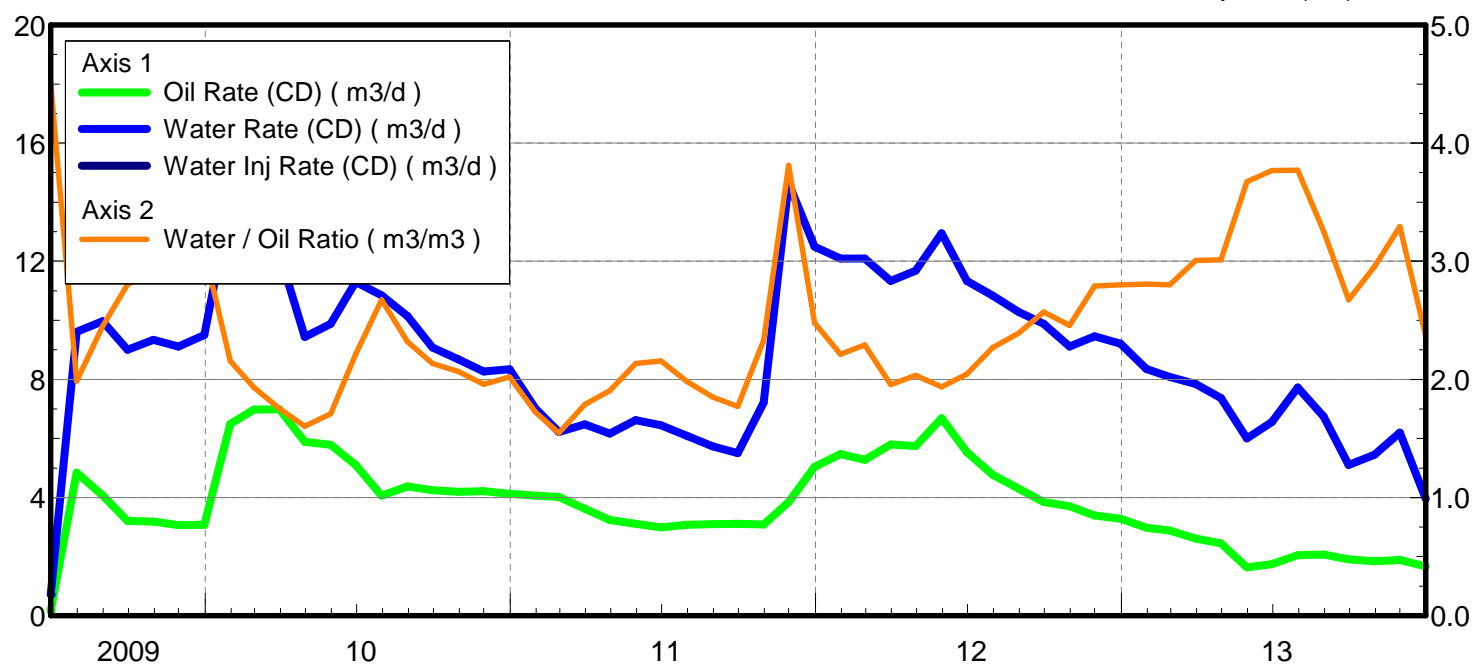
Oil Rate (CD) : 1.67 m3/d

Water Rate (CD) : 3.95 m3/d

Water / Oil Ratio : 2.36 m3/m3

Operator: Tundra_O&G_Prtshp

Water Inj Rate (CD) : * m3/d



Date	Oil Rate (CD) m3/d	Water Rate (CD) m3/d	Water Oil Ratio m3/m3	Water Inj Rate (CD) m3/d	Cum Oil Prod Km3	Cum Water Prod Km3	Cum Water Inj Km3	Voidage Replacement Ratio	Cum Voidage Replacemt Ratio
6/30/2009	0.16	0.72	4.50		0.00	0.02	0.00	0.000	0.000
7/31/2009	4.84	9.61	1.99		0.15	0.32	0.00	0.000	0.000
8/31/2009	4.07	9.96	2.45		0.28	0.63	0.00	0.000	0.000
9/30/2009	3.21	9.00	2.80		0.38	0.90	0.00	0.000	0.000
10/31/2009	3.19	9.34	2.93		0.48	1.19	0.00	0.000	0.000
11/30/2009	3.06	9.11	2.97		0.57	1.46	0.00	0.000	0.000
12/31/2009	3.08	9.50	3.09		0.66	1.76	0.00	0.000	0.000
1/31/2010	6.49	14.00	2.16		0.86	2.19	0.00	0.000	0.000
2/28/2010	6.97	13.47	1.93		1.06	2.57	0.00	0.000	0.000
3/31/2010	6.99	12.25	1.75		1.28	2.95	0.00	0.000	0.000
4/30/2010	5.88	9.43	1.60		1.45	3.23	0.00	0.000	0.000
5/31/2010	5.78	9.88	1.71		1.63	3.54	0.00	0.000	0.000
6/30/2010	5.11	11.30	2.21		1.79	3.88	0.00	0.000	0.000
7/31/2010	4.06	10.85	2.67		1.91	4.21	0.00	0.000	0.000
8/31/2010	4.38	10.14	2.32		2.05	4.53	0.00	0.000	0.000
9/30/2010	4.25	9.08	2.14		2.17	4.80	0.00	0.000	0.000
10/31/2010	4.20	8.67	2.07		2.30	5.07	0.00	0.000	0.000
11/30/2010	4.22	8.27	1.96		2.43	5.32	0.00	0.000	0.000
12/31/2010	4.13	8.34	2.02		2.56	5.57	0.00	0.000	0.000
1/31/2011	4.07	7.01	1.72		2.69	5.79	0.00	0.000	0.000
2/28/2011	4.02	6.22	1.55		2.80	5.97	0.00	0.000	0.000
3/31/2011	3.62	6.48	1.79		2.91	6.17	0.00	0.000	0.000
4/30/2011	3.24	6.17	1.90		3.01	6.35	0.00	0.000	0.000
5/31/2011	3.10	6.62	2.13		3.10	6.56	0.00	0.000	0.000
6/30/2011	2.99	6.45	2.16		3.19	6.75	0.00	0.000	0.000
7/31/2011	3.07	6.09	1.98		3.29	6.94	0.00	0.000	0.000
8/31/2011	3.10	5.74	1.85		3.38	7.12	0.00	0.000	0.000
9/30/2011	3.11	5.51	1.77		3.48	7.28	0.00	0.000	0.000
10/31/2011	3.09	7.21	2.33		3.57	7.51	0.00	0.000	0.000
11/30/2011	3.84	14.64	3.81		3.69	7.94	0.00	0.000	0.000
12/31/2011	5.04	12.49	2.48		3.85	8.33	0.00	0.000	0.000
1/31/2012	5.47	12.10	2.21		4.01	8.71	0.00	0.000	0.000
2/29/2012	5.28	12.09	2.29		4.17	9.06	0.00	0.000	0.000
3/31/2012	5.80	11.34	1.95		4.35	9.41	0.00	0.000	0.000
4/30/2012	5.74	11.68	2.04		4.52	9.76	0.00	0.000	0.000
5/31/2012	6.69	12.95	1.94		4.73	10.16	0.00	0.000	0.000
6/30/2012	5.54	11.33	2.05		4.89	10.50	0.00	0.000	0.000
7/31/2012	4.77	10.84	2.27		5.04	10.84	0.00	0.000	0.000
8/31/2012	4.30	10.29	2.39		5.17	11.16	0.00	0.000	0.000
9/30/2012	3.84	9.88	2.57		5.29	11.45	0.00	0.000	0.000
10/31/2012	3.71	9.11	2.46		5.40	11.73	0.00	0.000	0.000
11/30/2012	3.39	9.46	2.79		5.51	12.02	0.00	0.000	0.000
12/31/2012	3.29	9.21	2.80		5.61	12.30	0.00	0.000	0.000
1/31/2013	2.98	8.36	2.81		5.70	12.56	0.00	0.000	0.000
2/28/2013	2.89	8.08	2.80		5.78	12.79	0.00	0.000	0.000
3/31/2013	2.61	7.85	3.01		5.86	13.03	0.00	0.000	0.000
4/30/2013	2.44	7.37	3.01		5.94	13.25	0.00	0.000	0.000
5/31/2013	1.63	6.00	3.67		5.99	13.44	0.00	0.000	0.000

Date	Oil Rate (CD) m3/d	Water Rate (CD) m3/d	Water Oil Ratio m3/m3	Water Inj Rate (CD) m3/d	Cum Oil Prod Km3	Cum Water Prod Km3	Cum Water Inj Km3	Voidage Replacement Ratio	Cum Voidage Replacemt Ratio
6/30/2013	1.74	6.56	3.77		6.04	13.64	0.00	0.000	0.000
7/31/2013	2.05	7.73	3.77		6.10	13.88	0.00	0.000	0.000
8/31/2013	2.07	6.74	3.25		6.17	14.08	0.00	0.000	0.000
9/30/2013	1.91	5.10	2.67		6.22	14.24	0.00	0.000	0.000
10/31/2013	1.84	5.45	2.96		6.28	14.41	0.00	0.000	0.000
11/30/2013	1.88	6.20	3.29		6.34	14.59	0.00	0.000	0.000
12/31/2013	1.67	3.95	2.36		6.39	14.71	0.00	0.000	0.000

Oil Formation Vol Factor : 1.07100 m3/m3 Pattern: 03/12-36-008-29Inj Set: EwartUnit#4

Water Formation Vol Factor : 1.00150 m3/m3

March 24, 2014

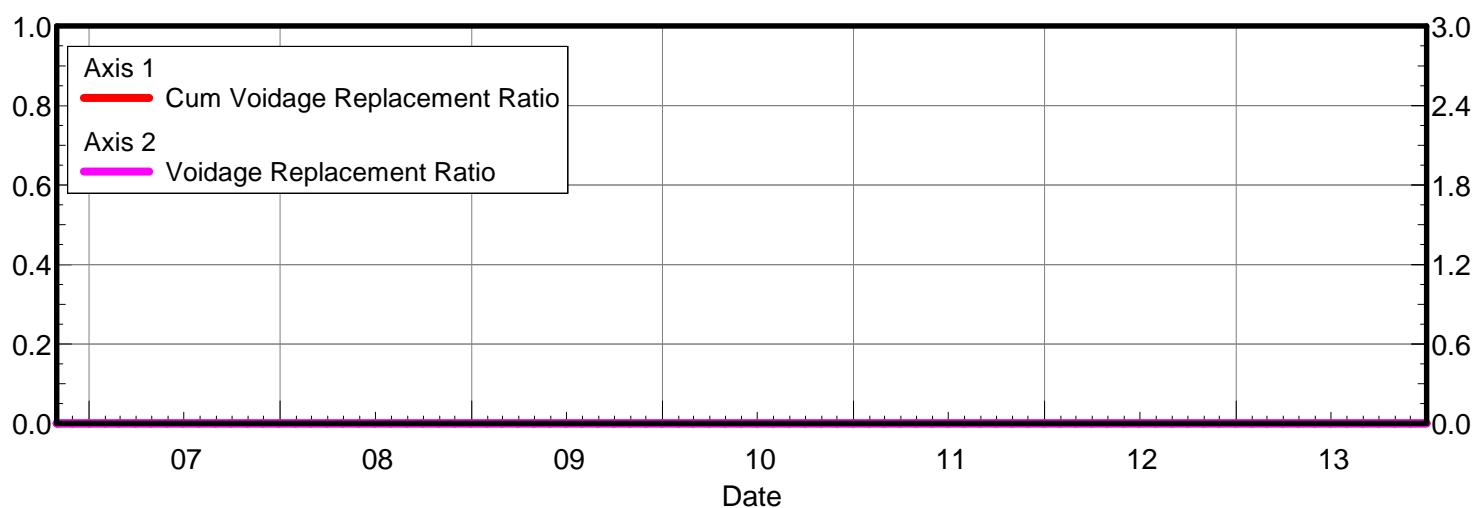
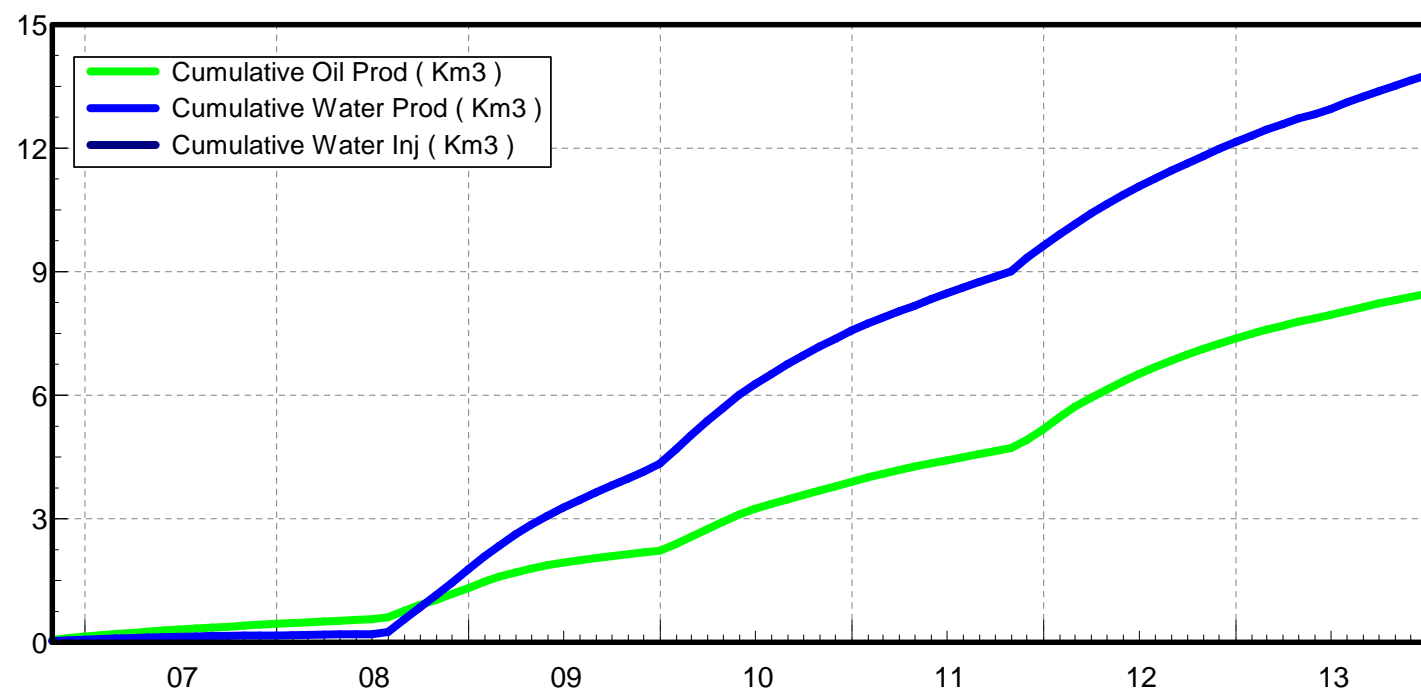
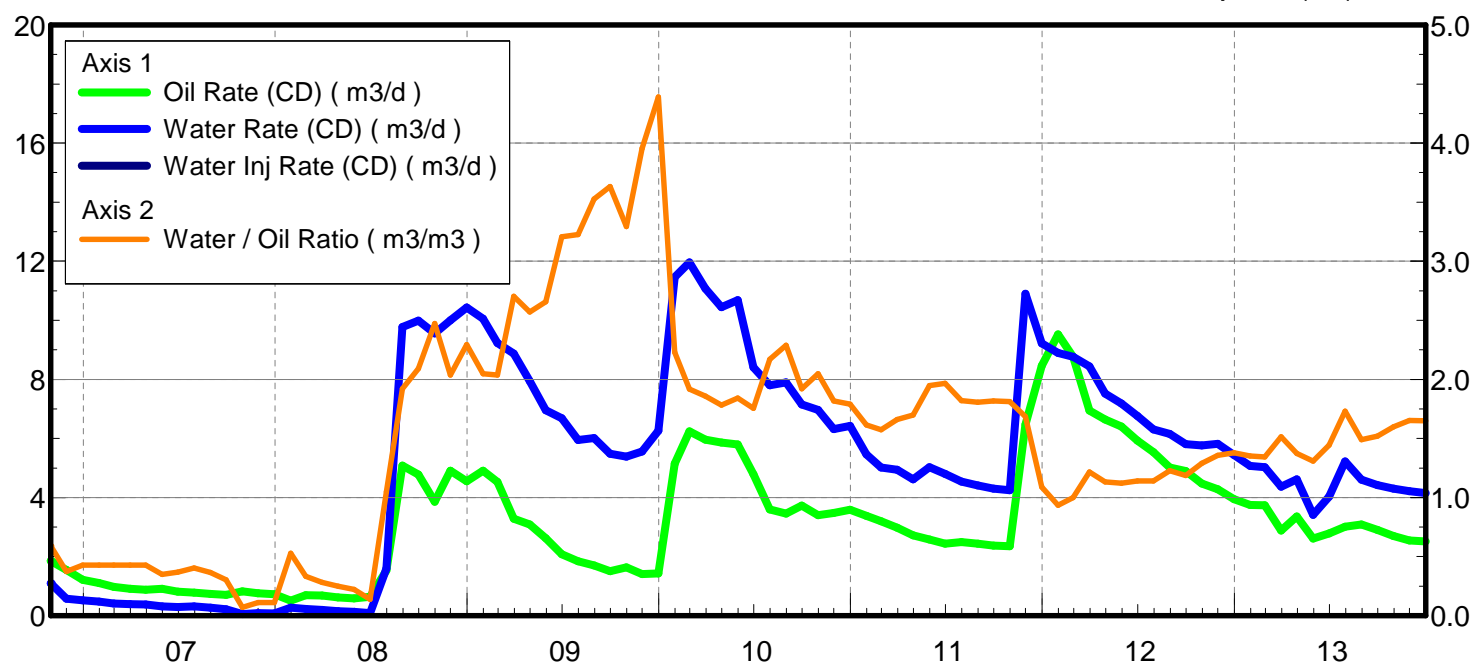
Oil Rate (CD) : 2.52 m3/d

Water Rate (CD) : 4.15 m3/d

Water / Oil Ratio : 1.65 m3/m3

Operator: Tundra_O&G_Prtshp

Water Inj Rate (CD) : * m3/d



Date	Oil Rate (CD) m3/d	Water Rate (CD) m3/d	Water Oil Ratio m3/m3	Water Inj Rate (CD) m3/d	Cum Oil Prod Km3	Cum Water Prod Km3	Cum Water Inj Km3	Voidage Replacement Ratio	Cum Voidage Replacemt Ratio
10/31/2006	1.85	1.09	0.59		0.06	0.03	0.00	0.000	0.000
11/30/2006	1.55	0.58	0.37		0.10	0.05	0.00	0.000	0.000
12/31/2006	1.21	0.52	0.43		0.14	0.07	0.00	0.000	0.000
1/31/2007	1.11	0.47	0.43		0.18	0.08	0.00	0.000	0.000
2/28/2007	0.97	0.42	0.43		0.20	0.09	0.00	0.000	0.000
3/31/2007	0.91	0.39	0.43		0.23	0.11	0.00	0.000	0.000
4/30/2007	0.88	0.38	0.43		0.26	0.12	0.00	0.000	0.000
5/31/2007	0.91	0.32	0.35		0.29	0.13	0.00	0.000	0.000
6/30/2007	0.81	0.30	0.37		0.31	0.14	0.00	0.000	0.000
7/31/2007	0.79	0.32	0.40		0.33	0.15	0.00	0.000	0.000
8/31/2007	0.74	0.27	0.37		0.36	0.15	0.00	0.000	0.000
9/30/2007	0.71	0.22	0.30		0.38	0.16	0.00	0.000	0.000
10/31/2007	0.82	0.06	0.07		0.40	0.16	0.00	0.000	0.000
11/30/2007	0.76	0.09	0.11		0.43	0.17	0.00	0.000	0.000
12/31/2007	0.73	0.08	0.11		0.45	0.17	0.00	0.000	0.000
1/31/2008	0.51	0.27	0.53		0.47	0.18	0.00	0.000	0.000
2/29/2008	0.70	0.23	0.33		0.49	0.18	0.00	0.000	0.000
3/31/2008	0.68	0.19	0.28		0.51	0.19	0.00	0.000	0.000
4/30/2008	0.61	0.15	0.25		0.53	0.19	0.00	0.000	0.000
5/31/2008	0.58	0.13	0.22		0.54	0.20	0.00	0.000	0.000
6/30/2008	0.64	0.09	0.14		0.56	0.20	0.00	0.000	0.000
7/31/2008	1.53	1.60	1.05		0.61	0.25	0.00	0.000	0.000
8/31/2008	5.09	9.77	1.92		0.77	0.55	0.00	0.000	0.000
9/30/2008	4.78	9.99	2.09		0.91	0.85	0.00	0.000	0.000
10/31/2008	3.86	9.55	2.47		1.03	1.15	0.00	0.000	0.000
11/30/2008	4.91	10.00	2.04		1.18	1.45	0.00	0.000	0.000
12/31/2008	4.55	10.44	2.30		1.32	1.77	0.00	0.000	0.000
1/31/2009	4.91	10.05	2.05		1.47	2.08	0.00	0.000	0.000
2/28/2009	4.53	9.23	2.04		1.60	2.34	0.00	0.000	0.000
3/31/2009	3.28	8.87	2.70		1.70	2.62	0.00	0.000	0.000
4/30/2009	3.09	7.94	2.57		1.79	2.85	0.00	0.000	0.000
5/31/2009	2.62	6.96	2.66		1.87	3.07	0.00	0.000	0.000
6/30/2009	2.08	6.68	3.21		1.94	3.27	0.00	0.000	0.000
7/31/2009	1.84	5.95	3.23		1.99	3.46	0.00	0.000	0.000
8/31/2009	1.70	6.01	3.53		2.05	3.64	0.00	0.000	0.000
9/30/2009	1.51	5.49	3.63		2.09	3.81	0.00	0.000	0.000
10/31/2009	1.63	5.38	3.29		2.14	3.97	0.00	0.000	0.000
11/30/2009	1.41	5.55	3.95		2.18	4.14	0.00	0.000	0.000
12/31/2009	1.43	6.27	4.39		2.23	4.33	0.00	0.000	0.000
1/31/2010	5.14	11.46	2.23		2.39	4.69	0.00	0.000	0.000
2/28/2010	6.24	11.96	1.92		2.56	5.02	0.00	0.000	0.000
3/31/2010	5.96	11.07	1.86		2.75	5.37	0.00	0.000	0.000
4/30/2010	5.86	10.44	1.78		2.92	5.68	0.00	0.000	0.000
5/31/2010	5.80	10.68	1.84		3.10	6.01	0.00	0.000	0.000
6/30/2010	4.79	8.41	1.76		3.25	6.26	0.00	0.000	0.000
7/31/2010	3.60	7.80	2.17		3.36	6.51	0.00	0.000	0.000
8/31/2010	3.45	7.90	2.29		3.46	6.75	0.00	0.000	0.000
9/30/2010	3.73	7.16	1.92		3.58	6.97	0.00	0.000	0.000

Date	Oil Rate (CD) m3/d	Water Rate (CD) m3/d	Water Oil Ratio m3/m3	Water Inj Rate (CD) m3/d	Cum Oil Prod Km3	Cum Water Prod Km3	Cum Water Inj Km3	Voidage Replacement Ratio	Cum Voidage Replacemt Ratio
10/31/2010	3.40	6.96	2.05		3.68	7.18	0.00	0.000	0.000
11/30/2010	3.47	6.32	1.82		3.79	7.37	0.00	0.000	0.000
12/31/2010	3.59	6.42	1.79		3.90	7.57	0.00	0.000	0.000
1/31/2011	3.38	5.46	1.61		4.00	7.74	0.00	0.000	0.000
2/28/2011	3.19	5.02	1.57		4.09	7.88	0.00	0.000	0.000
3/31/2011	2.98	4.94	1.66		4.18	8.03	0.00	0.000	0.000
4/30/2011	2.72	4.62	1.70		4.27	8.17	0.00	0.000	0.000
5/31/2011	2.58	5.02	1.95		4.35	8.33	0.00	0.000	0.000
6/30/2011	2.44	4.80	1.97		4.42	8.47	0.00	0.000	0.000
7/31/2011	2.49	4.54	1.82		4.50	8.61	0.00	0.000	0.000
8/31/2011	2.44	4.41	1.81		4.57	8.75	0.00	0.000	0.000
9/30/2011	2.37	4.30	1.82		4.64	8.88	0.00	0.000	0.000
10/31/2011	2.35	4.25	1.81		4.72	9.01	0.00	0.000	0.000
11/30/2011	6.47	10.90	1.68		4.91	9.34	0.00	0.000	0.000
12/31/2011	8.46	9.22	1.09		5.17	9.62	0.00	0.000	0.000
1/31/2012	9.52	8.89	0.93		5.47	9.90	0.00	0.000	0.000
2/29/2012	8.76	8.77	1.00		5.72	10.15	0.00	0.000	0.000
3/31/2012	6.95	8.45	1.22		5.94	10.41	0.00	0.000	0.000
4/30/2012	6.64	7.52	1.13		6.14	10.64	0.00	0.000	0.000
5/31/2012	6.41	7.18	1.12		6.33	10.86	0.00	0.000	0.000
6/30/2012	5.93	6.76	1.14		6.51	11.06	0.00	0.000	0.000
7/31/2012	5.53	6.31	1.14		6.68	11.26	0.00	0.000	0.000
8/31/2012	5.01	6.16	1.23		6.84	11.45	0.00	0.000	0.000
9/30/2012	4.89	5.80	1.19		6.99	11.63	0.00	0.000	0.000
10/31/2012	4.47	5.76	1.29		7.12	11.80	0.00	0.000	0.000
11/30/2012	4.28	5.82	1.36		7.25	11.98	0.00	0.000	0.000
12/31/2012	3.95	5.44	1.38		7.38	12.15	0.00	0.000	0.000
1/31/2013	3.75	5.07	1.35		7.49	12.30	0.00	0.000	0.000
2/28/2013	3.74	5.02	1.34		7.60	12.45	0.00	0.000	0.000
3/31/2013	2.89	4.37	1.51		7.69	12.58	0.00	0.000	0.000
4/30/2013	3.36	4.61	1.37		7.79	12.72	0.00	0.000	0.000
5/31/2013	2.61	3.41	1.31		7.87	12.82	0.00	0.000	0.000
6/30/2013	2.79	4.03	1.44		7.95	12.95	0.00	0.000	0.000
7/31/2013	3.02	5.22	1.73		8.04	13.11	0.00	0.000	0.000
8/31/2013	3.09	4.61	1.49		8.14	13.25	0.00	0.000	0.000
9/30/2013	2.91	4.42	1.52		8.23	13.38	0.00	0.000	0.000
10/31/2013	2.69	4.31	1.60		8.31	13.52	0.00	0.000	0.000
11/30/2013	2.55	4.21	1.65		8.39	13.64	0.00	0.000	0.000
12/31/2013	2.52	4.15	1.65		8.47	13.77	0.00	0.000	0.000



TUNDRA OIL & GAS PARTNERSHIP

SINCLAIR DOWNSPACING (1-36) HZ 5-36-8-29

102/05-36-008-29W1/00

LICENSE #: 8182

BAKKEN FORMATION

Open Hole: 1051.5 – 2320.0 mKBMD
(907.34 – 916.15 TVD)

RESERVOIR PRESSURE SURVEY
OCTOBER 5th – 25th, 2011

Prepared by: **DOLLCO Well Data Services**
e-mail: dollco@shaw.ca

PO Box 326
417A Mississippian Drive
Estevan, SK
S4A 2A4

Cell: (306) 421 - 7330
Fax: (306) 634 - 7976
Res: (306) 634 - 8761

E-mail: qualityw@sasktel.net

Pressure Survey Report

Company Information

Company Name	TUNDRA OIL & GAS PARTNERSHIP
Contact	CRAIG LANE
e-mail	Craig.Lane@tundraoilandgas.com
Phone	1-204-748-5894
Site Contact	SCOTT MURRAY
Site Phone	1-306-482-7216

Well Information

Well Name	SINCLAIR DOWNSPACING (1-36) HZ 5-36-8-29
Unique Well ID	102/05-36-008-29W1/00
Surface Location	1-36/5-36-8-29W1
Well License Number	8182
Well Type	Horizontal
Well Fluid Type	01 Oil
Field	SINCLAIR DOWNSPACING
KB Elevation (SL)	517.48 m
CF Elevation (SL)	513.48 m
GL Elevation (SL)	513.23 m
Distance from KB to CF (Log)	4.00 m
KB-GL Offset	4.25 m
Tubing ID	mm
Tubing OD	mm
Tubing Depth(Log KB)	m
Tubing Depth(TVD KB)	m
Casing ID	159.0 mm
Casing OD	177.8 mm
Casing Depth(Log KB)	1051.50 m
Casing Depth(TVD KB)	907.34 m
PBTD(Log KB)	m
PBTD(TVD KB)	m



Pressure Survey Report

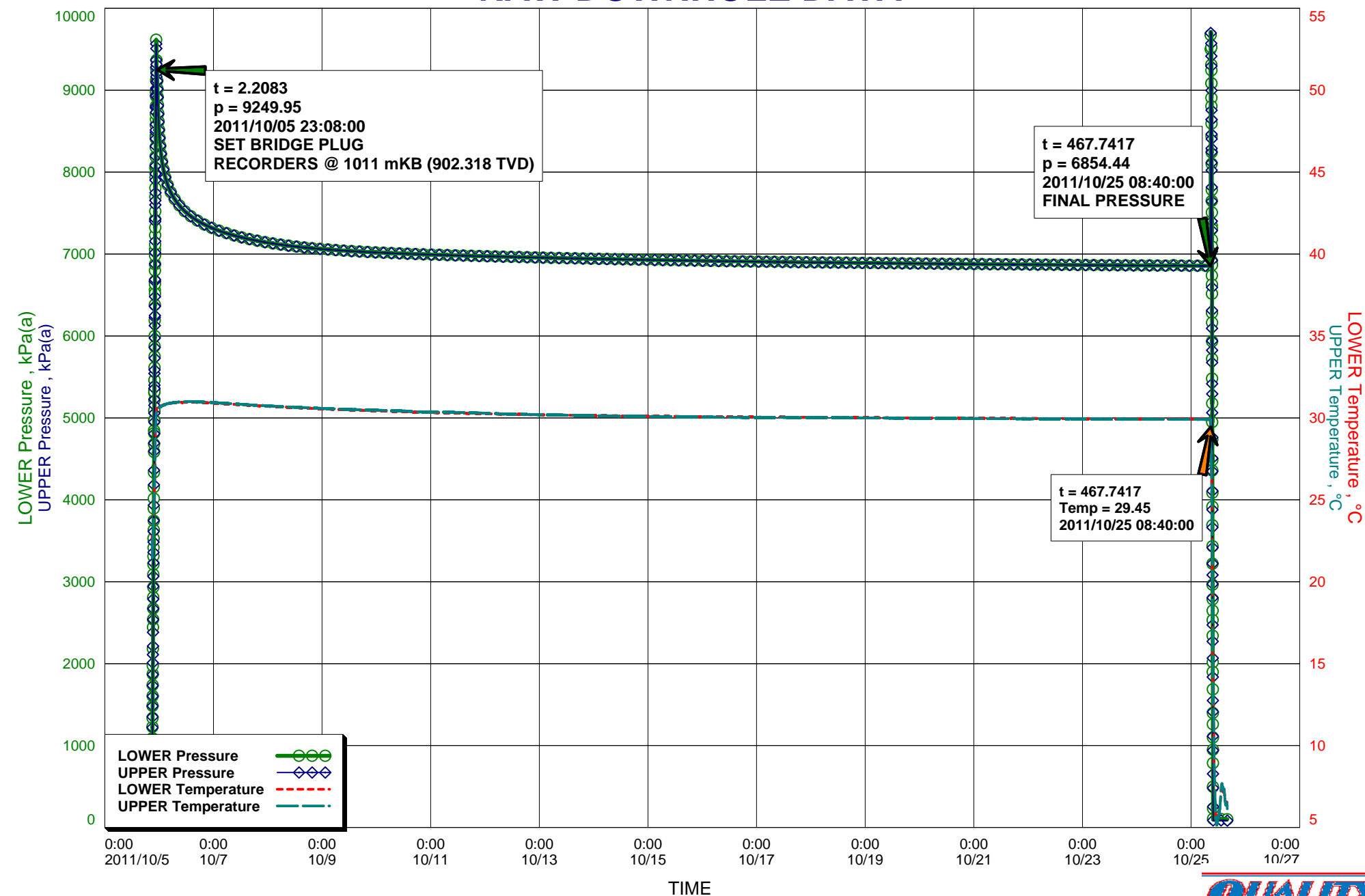
Test Information

Well Name	SINCLAIR DOWNSPACING (1-36) HZ 5-36-8-29
Unique Well ID	102/05-36-008-29W1/00
Surface Location	1-36/5-36-8-29W1
Well License Number	8182
Well Fluid Type	01 Oil
Test Purpose	Initial Test
Test Type	RESERVOIR PRESSURE SURVEY
Formation	BAKKEN
Pool	Open Hole: 1051.5 - 2320.0 mKBMD
Well Type Indicator	Horizontal
Test/Prod. Interval Top KB (Log)	1051.50 m
Test/Prod. Interval Base KB (Log)	2320.00 m
Test/Prod Interval Top KB (TVD)	907.34 m
Test/Prod. Interval Base m KB (TVD)	916.15 m
MPP(Log KB)	1685.75 m
MPP(TVD KB)	911.74 m
Date/Time Gauge on Bottom	2011/10/05 22:51:00
Date/Time Gauge Off Bottom	2011/10/25 08:55:00
Time/Date Well Shut-In	2011/10/05 23:08:00
Tubing Pressure Initial	93.01 kPa(a)
Casing Pressure Initial	93.01 kPa(a)
Tubing Pressure: Final	93.01 kPa(a)
Casing Pressure: Final	93.01 kPa(a)
Last Measured Pressure at Run Depth	6854.44 kPa(a)
Reservoir Temperature	29.45 °C
Service Company	Quality Wireline Services Ltd.
Representative	MIKE MUIR
Prepared By	DOLLCO Well Data Services
Qualified By	RICK DOLL
Report Date	2011/10/27

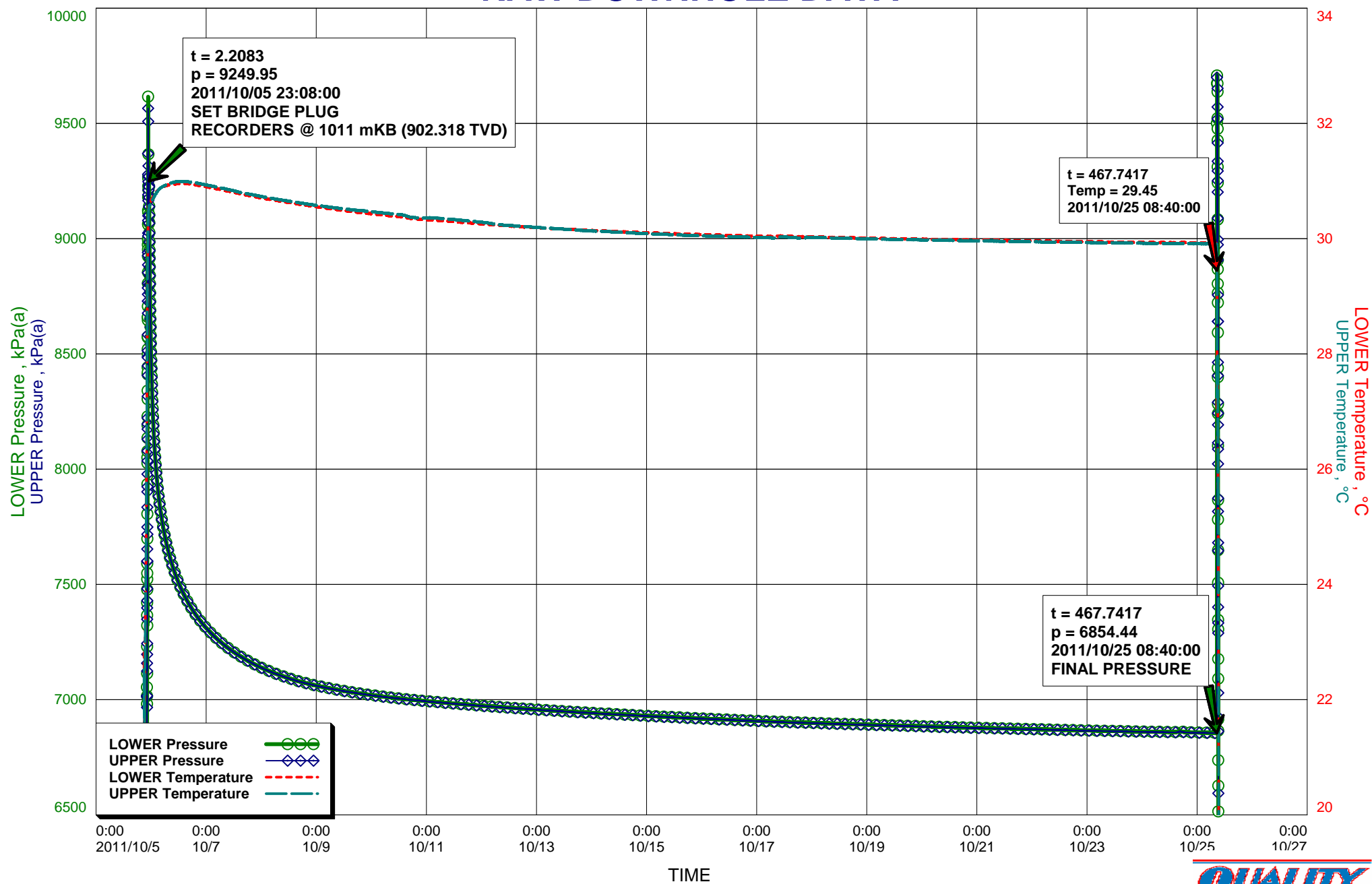
THESE RECORDERS WERE RUN & PULLED BELOW A BRIDGE PLUG WITH PIPE
OPEN HOLE: 1051.5 - 2320.0 mKBMD (907.34 - 916.15 TVD)



RAW DOWNHOLE DATA



RAW DOWNHOLE DATA



Recorder Information

Company Name	TUNDRA OIL & GAS PARTNERSHIP
Unique Well ID	102/05-36-008-29W1/00
Well Name	SINCLAIR DOWNSPACING (1-36) HZ 5-36-8-29
Formation	BAKKEN
Start Test Date	2011/10/05
Final Test Date	2011/10/25

Gauge 1

Gauge Name	LOWER	Gauge Type	ELECTRONIC
Gauge Serial Number	40448	Gauge Manufacturer	REAL TIME MEASUREMENTS
Run Depth (Log KB)	1011.00 m	Gauge Model	KC2 STRAIN
Date of Last Calibration	2010/05/11	Maximum Recorder Range	20680.00 kPa
Gauge Start Date	2011/10/05	Gauge Start Time	20:55:30
Gauge Stop Date	2011/10/25	Gauge Stop Time	16:00:00
Date Gauge On Bottom	2011/10/05	Time Gauge On Bottom	22:51:00
Date Gauge Off Bottom	2011/10/25	Time Gauge Off Bottom	08:55:00

Gauge 2

Gauge Name	UPPER	Gauge Type	ELECTRONIC
Gauge Serial Number	40434	Gauge Manufacturer	REAL TIME MEASUREMENTS
Run Depth (Log KB)	1010.70 m	Gauge Model	KC2 STRAIN
Date of Last Calibration	2010/02/17	Maximum Recorder Range	20680.00 kPa
Gauge Start Date	2011/10/05	Gauge Start Time	20:55:30
Gauge Stop Date	2011/10/25	Gauge Stop Time	16:00:00
Date Gauge On Bottom	2011/10/05	Time Gauge On Bottom	22:51:00
Date Gauge Off Bottom	2011/10/25	Time Gauge Off Bottom	08:55:00

TUNDRA OIL & GAS PARTNERSHIP

102/05-36-008-29W1/00

Start Test Date: 2011/10/05

Final Test Date: 2011/10/25

SINCLAIR DOWNSPACING (1-36) HZ 5-36-8-29

Formation: BAKKEN

RESERVOIR PRESSURE SURVEY Pool: Open Hole: 1051.5 - 2320.0 mKBMD

	LOWER Date yyyy/mm/dd	LOWER Clk Time hh:mm:ss	LOWER Time hr	LOWER Pres. kPa(a)	LOWER Temp. °C	UPPER Time hr	UPPER Pres. kPa(a)	UPPER Temp. °C
1	2011/10/05	20:55:30	0.0000	460.21	22.82	0.0000	461.43	22.53
2	2011/10/05	20:55:30	0.0000	ACTIVATE RECORDERS S/N: 40448(L) & 40434(U)				
3	2011/10/05	20:56:00	0.0083	528.38	22.62	0.0083	518.43	22.30
4	2011/10/05	22:51:00	1.9250	9211.78	30.49	1.9250	9223.40	30.46
5	2011/10/05	22:51:00	1.9250	ON BOTTOM, RECORDERS @ 1011.0 mKB (902.318 TVD)				
6	2011/10/05	22:51:30	1.9333	9243.03	30.50	1.9333	9269.08	30.46
7	2011/10/05	23:08:00	2.2083	9249.95	30.60	2.2083	9239.64	30.57
8	2011/10/05	23:08:00	2.2083	SET BRIDGE PLUG @ 1010 mKB (CE), WELL SHUT-IN				
9	2011/10/05	23:08:30	2.2167	9226.08	30.60	2.2167	9224.75	30.57
10	2011/10/05	23:55:30	3.0000	8532.56	30.65	3.0000	8532.33	30.61
11	2011/10/06	02:55:30	6.0000	7916.03	30.83	6.0000	7915.78	30.83
12	2011/10/06	05:55:30	9.0000	7713.35	30.91	9.0000	7713.05	30.92
13	2011/10/06	08:55:30	12.0000	7593.41	30.94	12.0000	7593.08	30.97
14	2011/10/06	11:55:30	15.0000	7508.48	30.95	15.0000	7508.49	31.00
15	2011/10/06	14:55:30	18.0000	7443.75	30.95	18.0000	7443.75	30.99
16	2011/10/06	17:55:30	21.0000	7391.88	30.94	21.0000	7391.40	30.98
17	2011/10/06	20:55:30	24.0000	7348.58	30.92	24.0000	7348.18	30.96
18	2011/10/06	23:55:30	27.0000	7312.20	30.90	27.0000	7311.59	30.93
19	2011/10/07	02:55:30	30.0000	7280.72	30.88	30.0000	7280.22	30.91
20	2011/10/07	05:55:30	33.0000	7253.40	30.86	33.0000	7252.66	30.89
21	2011/10/07	08:55:30	36.0000	7229.20	30.83	36.0000	7228.56	30.86
22	2011/10/07	11:55:30	39.0000	7207.56	30.81	39.0000	7207.18	30.84
23	2011/10/07	14:55:30	42.0000	7188.07	30.78	42.0000	7187.54	30.81
24	2011/10/07	17:55:30	45.0000	7170.56	30.75	45.0000	7169.81	30.78
25	2011/10/07	20:55:30	48.0000	7154.13	30.73	48.0000	7153.58	30.75
26	2011/10/07	23:55:30	51.0000	7139.59	30.71	51.0000	7138.78	30.73
27	2011/10/08	02:55:30	54.0000	7126.55	30.69	54.0000	7125.46	30.71
28	2011/10/08	05:55:30	57.0000	7114.53	30.66	57.0000	7113.72	30.69
29	2011/10/08	08:55:30	60.0000	7103.54	30.65	60.0000	7102.74	30.67
30	2011/10/08	11:55:30	63.0000	7093.27	30.63	63.0000	7092.48	30.65
31	2011/10/08	14:55:30	66.0000	7084.00	30.61	66.0000	7083.42	30.64
32	2011/10/08	17:55:30	69.0000	7075.86	30.59	69.0000	7074.86	30.62
33	2011/10/08	20:55:30	72.0000	7068.26	30.58	72.0000	7067.43	30.60
34	2011/10/08	23:55:30	75.0000	7061.12	30.55	75.0000	7060.43	30.58
35	2011/10/09	02:55:30	78.0000	7054.89	30.54	78.0000	7054.20	30.56
36	2011/10/09	05:55:30	81.0000	7049.20	30.52	81.0000	7048.25	30.55
37	2011/10/09	08:55:30	84.0000	7043.64	30.51	84.0000	7042.75	30.54
38	2011/10/09	11:55:30	87.0000	7038.05	30.49	87.0000	7037.33	30.52
39	2011/10/09	14:55:30	90.0000	7033.10	30.48	90.0000	7032.16	30.50
40	2011/10/09	17:55:30	93.0000	7028.79	30.46	93.0000	7027.89	30.49

LOWER Serial Number: 40448 Start Date: 2011/10/05 20:55:30 Run Depth: 1011.00

UPPER Serial Number: 40434 Start Date: 2011/10/05 20:55:30 Run Depth: 1010.70

Print Filter: Print every 3 hour

TUNDRA OIL & GAS PARTNERSHIP

102/05-36-008-29W1/00

Start Test Date: 2011/10/05

Final Test Date: 2011/10/25

SINCLAIR DOWNSPACING (1-36) HZ 5-36-8-29

Formation: BAKKEN

RESERVOIR PRESSURE SURVEY Pool: Open Hole: 1051.5 - 2320.0 mKBMD

	LOWER Date yyyy/mm/dd	LOWER Clk Time hh:mm:ss	LOWER Time hr	LOWER Pres. kPa(a)	LOWER Temp. °C	UPPER Time hr	UPPER Pres. kPa(a)	UPPER Temp. °C
41	2011/10/09	20:55:30	96.0000	7024.17	30.45	96.0000	7023.16	30.48
42	2011/10/09	23:55:30	99.0000	7020.04	30.44	99.0000	7018.95	30.47
43	2011/10/10	02:55:30	102.0000	7015.91	30.42	102.0000	7015.18	30.46
44	2011/10/10	05:55:30	105.0000	7012.64	30.41	105.0000	7011.53	30.44
45	2011/10/10	08:55:30	108.0000	7008.83	30.40	108.0000	7008.08	30.43
46	2011/10/10	11:55:30	111.0000	7005.42	30.38	111.0000	7004.67	30.42
47	2011/10/10	14:55:30	114.0000	7002.59	30.37	114.0000	7001.62	30.40
48	2011/10/10	17:55:30	117.0000	6999.62	30.35	117.0000	6998.50	30.37
49	2011/10/10	20:55:30	120.0000	6996.72	30.34	120.0000	6995.89	30.36
50	2011/10/10	23:55:30	123.0000	6993.78	30.33	123.0000	6993.05	30.36
51	2011/10/11	02:55:30	126.0000	6991.22	30.32	126.0000	6990.16	30.36
52	2011/10/11	05:55:30	129.0000	6988.61	30.32	129.0000	6987.50	30.35
53	2011/10/11	08:55:30	132.0000	6985.96	30.30	132.0000	6985.02	30.34
54	2011/10/11	11:55:30	135.0000	6983.41	30.30	135.0000	6982.46	30.33
55	2011/10/11	14:55:30	138.0000	6981.15	30.29	138.0000	6980.10	30.32
56	2011/10/11	17:55:30	141.0000	6978.77	30.28	141.0000	6977.89	30.31
57	2011/10/11	20:55:30	144.0000	6976.46	30.27	144.0000	6975.41	30.30
58	2011/10/11	23:55:30	147.0000	6973.70	30.26	147.0000	6972.96	30.29
59	2011/10/12	02:55:30	150.0000	6971.66	30.25	150.0000	6970.76	30.27
60	2011/10/12	05:55:30	153.0000	6969.84	30.24	153.0000	6968.66	30.25
61	2011/10/12	08:55:30	156.0000	6967.54	30.23	156.0000	6966.63	30.24
62	2011/10/12	11:55:30	159.0000	6965.60	30.22	159.0000	6964.52	30.23
63	2011/10/12	14:55:30	162.0000	6963.24	30.21	162.0000	6962.49	30.22
64	2011/10/12	17:55:30	165.0000	6961.60	30.21	165.0000	6960.66	30.22
65	2011/10/12	20:55:30	168.0000	6959.76	30.20	168.0000	6958.53	30.20
66	2011/10/12	23:55:30	171.0000	6957.23	30.19	171.0000	6956.62	30.20
67	2011/10/13	02:55:30	174.0000	6955.55	30.19	174.0000	6954.50	30.19
68	2011/10/13	05:55:30	177.0000	6953.67	30.18	177.0000	6952.51	30.18
69	2011/10/13	08:55:30	180.0000	6951.70	30.17	180.0000	6950.90	30.17
70	2011/10/13	11:55:30	183.0000	6949.80	30.17	183.0000	6948.84	30.17
71	2011/10/13	14:55:30	186.0000	6947.88	30.16	186.0000	6947.28	30.16
72	2011/10/13	17:55:30	189.0000	6946.41	30.15	189.0000	6945.46	30.15
73	2011/10/13	20:55:30	192.0000	6944.50	30.15	192.0000	6943.48	30.14
74	2011/10/13	23:55:30	195.0000	6942.71	30.15	195.0000	6941.71	30.13
75	2011/10/14	02:55:30	198.0000	6941.31	30.14	198.0000	6939.99	30.13
76	2011/10/14	05:55:30	201.0000	6939.22	30.13	201.0000	6938.41	30.12
77	2011/10/14	08:55:30	204.0000	6937.97	30.13	204.0000	6936.94	30.12
78	2011/10/14	11:55:30	207.0000	6936.53	30.13	207.0000	6935.17	30.11
79	2011/10/14	14:55:30	210.0000	6934.91	30.12	210.0000	6933.62	30.10
80	2011/10/14	17:55:30	213.0000	6933.14	30.11	213.0000	6932.01	30.10

LOWER Serial Number: 40448 Start Date: 2011/10/05 20:55:30 Run Depth: 1011.00

UPPER Serial Number: 40434 Start Date: 2011/10/05 20:55:30 Run Depth: 1010.70

Print Filter: Print every 3 hour

TUNDRA OIL & GAS PARTNERSHIP

102/05-36-008-29W1/00

Start Test Date: 2011/10/05

Final Test Date: 2011/10/25

SINCLAIR DOWNSPACING (1-36) HZ 5-36-8-29

Formation: BAKKEN

RESERVOIR PRESSURE SURVEY Pool: Open Hole: 1051.5 - 2320.0 mKBMD

	LOWER Date yyyy/mm/dd	LOWER Clk Time hh:mm:ss	LOWER Time hr	LOWER Pres. kPa(a)	LOWER Temp. °C	UPPER Time hr	UPPER Pres. kPa(a)	UPPER Temp. °C
81	2011/10/14	20:55:30	216.0000	6931.59	30.11	216.0000	6930.51	30.09
82	2011/10/14	23:55:30	219.0000	6930.11	30.10	219.0000	6929.28	30.09
83	2011/10/15	02:55:30	222.0000	6928.29	30.10	222.0000	6927.49	30.08
84	2011/10/15	05:55:30	225.0000	6926.85	30.09	225.0000	6925.89	30.08
85	2011/10/15	08:55:30	228.0000	6925.35	30.09	228.0000	6924.68	30.08
86	2011/10/15	11:55:30	231.0000	6924.06	30.09	231.0000	6923.31	30.07
87	2011/10/15	14:55:30	234.0000	6922.71	30.08	234.0000	6921.66	30.07
88	2011/10/15	17:55:30	237.0000	6921.25	30.08	237.0000	6920.29	30.06
89	2011/10/15	20:55:30	240.0000	6919.80	30.07	240.0000	6918.87	30.05
90	2011/10/15	23:55:30	243.0000	6918.44	30.07	243.0000	6917.17	30.05
91	2011/10/16	02:55:30	246.0000	6916.88	30.06	246.0000	6915.95	30.05
92	2011/10/16	05:55:30	249.0000	6915.77	30.07	249.0000	6914.80	30.04
93	2011/10/16	08:55:30	252.0000	6914.33	30.06	252.0000	6913.59	30.04
94	2011/10/16	11:55:30	255.0000	6912.95	30.05	255.0000	6912.12	30.04
95	2011/10/16	14:55:30	258.0000	6911.84	30.05	258.0000	6911.08	30.04
96	2011/10/16	17:55:30	261.0000	6910.44	30.05	261.0000	6909.54	30.02
97	2011/10/16	20:55:30	264.0000	6909.24	30.04	264.0000	6908.42	30.03
98	2011/10/16	23:55:30	267.0000	6907.94	30.04	267.0000	6907.21	30.02
99	2011/10/17	02:55:30	270.0000	6906.88	30.04	270.0000	6905.87	30.02
100	2011/10/17	05:55:30	273.0000	6905.65	30.04	273.0000	6904.72	30.02
101	2011/10/17	08:55:30	276.0000	6904.56	30.05	276.0000	6903.67	30.03
102	2011/10/17	11:55:30	279.0000	6903.34	30.04	279.0000	6902.80	30.03
103	2011/10/17	14:55:30	282.0000	6902.25	30.04	282.0000	6901.39	30.02
104	2011/10/17	17:55:30	285.0000	6901.17	30.04	285.0000	6900.08	30.01
105	2011/10/17	20:55:30	288.0000	6900.25	30.03	288.0000	6899.26	30.01
106	2011/10/17	23:55:30	291.0000	6899.57	30.04	291.0000	6898.28	30.02
107	2011/10/18	02:55:30	294.0000	6898.44	30.03	294.0000	6897.22	30.02
108	2011/10/18	05:55:30	297.0000	6897.62	30.03	297.0000	6895.87	30.01
109	2011/10/18	08:55:30	300.0000	6896.57	30.02	300.0000	6895.28	30.01
110	2011/10/18	11:55:30	303.0000	6895.54	30.02	303.0000	6894.45	30.01
111	2011/10/18	14:55:30	306.0000	6894.83	30.02	306.0000	6893.10	30.00
112	2011/10/18	17:55:30	309.0000	6893.67	30.01	309.0000	6892.44	30.00
113	2011/10/18	20:55:30	312.0000	6892.96	30.01	312.0000	6891.83	30.00
114	2011/10/18	23:55:30	315.0000	6892.01	30.01	315.0000	6890.81	30.00
115	2011/10/19	02:55:30	318.0000	6891.10	30.01	318.0000	6889.82	30.00
116	2011/10/19	05:55:30	321.0000	6890.01	30.01	321.0000	6888.80	29.99
117	2011/10/19	08:55:30	324.0000	6889.10	30.01	324.0000	6888.02	29.99
118	2011/10/19	11:55:30	327.0000	6888.54	30.01	327.0000	6887.41	29.99
119	2011/10/19	14:55:30	330.0000	6887.33	30.00	330.0000	6886.24	29.99
120	2011/10/19	17:55:30	333.0000	6886.67	30.00	333.0000	6885.38	29.98

LOWER Serial Number: 40448 Start Date: 2011/10/05 20:55:30 Run Depth: 1011.00

UPPER Serial Number: 40434 Start Date: 2011/10/05 20:55:30 Run Depth: 1010.70

Print Filter: Print every 3 hour

TUNDRA OIL & GAS PARTNERSHIP

102/05-36-008-29W1/00

Start Test Date: 2011/10/05

Final Test Date: 2011/10/25

SINCLAIR DOWNSPACING (1-36) HZ 5-36-8-29

Formation: BAKKEN

RESERVOIR PRESSURE SURVEY Pool: Open Hole: 1051.5 - 2320.0 mKBMD

	LOWER Date yyyy/mm/dd	LOWER Clk Time hh:mm:ss	LOWER Time hr	LOWER Pres. kPa(a)	LOWER Temp. °C	UPPER Time hr	UPPER Pres. kPa(a)	UPPER Temp. °C
121	2011/10/19	20:55:30	336.0000	6885.68	29.99	336.0000	6884.57	29.99
122	2011/10/19	23:55:30	339.0000	6884.75	29.99	339.0000	6883.63	29.98
123	2011/10/20	02:55:30	342.0000	6883.62	29.99	342.0000	6882.56	29.98
124	2011/10/20	05:55:30	345.0000	6882.81	29.98	345.0000	6881.77	29.98
125	2011/10/20	08:55:30	348.0000	6882.26	29.99	348.0000	6880.95	29.98
126	2011/10/20	11:55:30	351.0000	6881.27	29.99	351.0000	6880.22	29.97
127	2011/10/20	14:55:30	354.0000	6880.30	29.98	354.0000	6879.27	29.97
128	2011/10/20	17:55:30	357.0000	6879.68	29.98	357.0000	6878.17	29.96
129	2011/10/20	20:55:30	360.0000	6878.62	29.98	360.0000	6877.47	29.96
130	2011/10/20	23:55:30	363.0000	6878.14	29.98	363.0000	6876.58	29.96
131	2011/10/21	02:55:30	366.0000	6877.34	29.98	366.0000	6876.01	29.96
132	2011/10/21	05:55:30	369.0000	6876.65	29.97	369.0000	6875.04	29.96
133	2011/10/21	08:55:30	372.0000	6875.87	29.97	372.0000	6874.46	29.96
134	2011/10/21	11:55:30	375.0000	6875.18	29.97	375.0000	6873.88	29.95
135	2011/10/21	14:55:30	378.0000	6874.51	29.97	378.0000	6873.37	29.95
136	2011/10/21	17:55:30	381.0000	6873.63	29.96	381.0000	6872.53	29.95
137	2011/10/21	20:55:30	384.0000	6872.97	29.96	384.0000	6871.74	29.95
138	2011/10/21	23:55:30	387.0000	6872.38	29.96	387.0000	6870.93	29.95
139	2011/10/22	02:55:30	390.0000	6871.80	29.96	390.0000	6870.43	29.94
140	2011/10/22	05:55:30	393.0000	6870.84	29.95	393.0000	6869.46	29.94
141	2011/10/22	08:55:30	396.0000	6870.08	29.96	396.0000	6868.63	29.94
142	2011/10/22	11:55:30	399.0000	6869.26	29.95	399.0000	6868.16	29.94
143	2011/10/22	14:55:30	402.0000	6868.74	29.96	402.0000	6867.46	29.94
144	2011/10/22	17:55:30	405.0000	6867.92	29.95	405.0000	6866.73	29.94
145	2011/10/22	20:55:30	408.0000	6867.39	29.95	408.0000	6865.87	29.93
146	2011/10/22	23:55:30	411.0000	6866.75	29.95	411.0000	6865.28	29.93
147	2011/10/23	02:55:30	414.0000	6865.96	29.95	414.0000	6864.76	29.93
148	2011/10/23	05:55:30	417.0000	6865.23	29.95	417.0000	6864.01	29.93
149	2011/10/23	08:55:30	420.0000	6864.52	29.94	420.0000	6863.49	29.93
150	2011/10/23	11:55:30	423.0000	6863.84	29.94	423.0000	6862.90	29.93
151	2011/10/23	14:55:30	426.0000	6863.46	29.94	426.0000	6862.48	29.93
152	2011/10/23	17:55:30	429.0000	6862.79	29.94	429.0000	6861.86	29.93
153	2011/10/23	20:55:30	432.0000	6862.28	29.94	432.0000	6860.99	29.93
154	2011/10/23	23:55:30	435.0000	6861.54	29.94	435.0000	6860.30	29.92
155	2011/10/24	02:55:30	438.0000	6861.14	29.93	438.0000	6859.91	29.92
156	2011/10/24	05:55:30	441.0000	6860.75	29.94	441.0000	6859.30	29.92
157	2011/10/24	08:55:30	444.0000	6860.23	29.94	444.0000	6859.07	29.92
158	2011/10/24	11:55:30	447.0000	6859.49	29.93	447.0000	6858.31	29.92
159	2011/10/24	14:55:30	450.0000	6859.09	29.93	450.0000	6858.08	29.92
160	2011/10/24	17:55:30	453.0000	6860.40	29.93	453.0000	6858.76	29.91

LOWER Serial Number: 40448 Start Date: 2011/10/05 20:55:30 Run Depth: 1011.00

UPPER Serial Number: 40434 Start Date: 2011/10/05 20:55:30 Run Depth: 1010.70

Print Filter: Print every 3 hour

	LOWER Date yyyy/mm/dd	LOWER Clk Time hh:mm:ss	LOWER Time hr	LOWER Pres. kPa(a)	LOWER Temp. °C	UPPER Time hr	UPPER Pres. kPa(a)	UPPER Temp. °C
161	2011/10/24	20:55:30	456.0000	6858.49	29.93	456.0000	6857.23	29.92
162	2011/10/24	23:55:30	459.0000	6857.61	29.93	459.0000	6856.36	29.91
163	2011/10/25	02:55:30	462.0000	6856.93	29.93	462.0000	6855.82	29.91
164	2011/10/25	05:55:30	465.0000	6856.42	29.92	465.0000	6855.45	29.91
165	2011/10/25	08:40:00	467.7417	6854.44	29.45	467.7417	6854.58	29.83
166	2011/10/25	08:40:00	467.7417	FINAL PRESSURE, BEGIN TO UNSET BRIDGE PLUG.				
167	2011/10/25	08:40:30	467.7500	9501.04	29.44	467.7500	9699.10	29.77
168	2011/10/25	08:47:00	467.8583	9710.42	27.27	467.8583	9687.87	27.40
169	2011/10/25	08:47:00	467.8583	BRIDGE PLUG IS UNSET.				
170	2011/10/25	08:47:30	467.8667	9711.93	27.33	467.8667	9708.71	27.44
171	2011/10/25	08:55:00	467.9917	9648.45	27.88	467.9917	9651.87	27.97
172	2011/10/25	08:55:00	467.9917	BRIDGE PLUG AND RECORDERS PULLED FROM WELL				
173	2011/10/25	08:55:30	468.0000	9637.25	27.87	468.0000	9626.95	27.97
174	2011/10/25	09:57:00	469.0250	99.27	11.82	469.0250	84.10	11.83
175	2011/10/25	09:57:00	469.0250	RECORDERS AT SURFACE.				
176	2011/10/25	09:57:30	469.0333	99.10	11.70	469.0333	84.24	11.74
177	2011/10/25	11:55:30	471.0000	100.35	5.64	471.0000	84.42	5.53
178	2011/10/25	14:55:30	474.0000	100.75	6.84	474.0000	84.83	6.78
179	2011/10/25	16:00:00	475.0750	100.15	6.25	475.0750	84.29	6.14

LOWER Serial Number: 40448 Start Date: 2011/10/05 20:55:30 Run Depth: 1011.00

UPPER Serial Number: 40434 Start Date: 2011/10/05 20:55:30 Run Depth: 1010.70

Print Filter: Print every 3 hour



DATE: October 5 - 25, 2011	COMPANY: Tundra Oil & Gas Partnership
WELLNAME: Sinclair Downspacing (1-36) Hz 5-36-8-29 WPM	ADDRESS: Virden, MB
LOCATION: 1-36/5-36-8-29WPM	UWI: 102.05-36-008-29W1.00
FIELD: Sinclair Downspacing	FORMATION: Bakken
CO HQ REP: Craig Lane	PHONE: (204)748-5894
FIELD REP: Scott Murray	PHONE: (306)482-7216
REPORTS TO (NAME & EMAIL ADDRESS): Eric Bjornsson - eric.bjornsson@tundraoilandgas.com Tyler Routledge - tyler.routledge@tundraoilandgas.com Tim Howell - tim.howell@tundraoilandgas.com Craig Lane - craig.lane@tundraoilandgas.com Bill Jenkins - bill.jenkins@tundraoilandgas.com Adam Berke - adam.berke@tundraoilandgas.com Shawn Blaschuk - shawn.blaschuk@tundraoilandgas.com Josh Porter - josh.porter@tundraoilandgas.com	

STATUS: injection well		TEST TYPE: frac isolation
ESTIMATED H2S CONTENT: 0%		ESTIMATED CO2 CONTENT: n/a
PRODUCING THROUGH: tubing		SHUT IN TIME/DATE: 23:08 Oct 5, 2011
KOP: 662 mKB	TVD: see survey	LICENCE #: 8182
PBTD: n/a	TD: 2320 mKB	WELL TYPE: horizontal
CASING SIZE: 177.8 mm	CSG WEIGHT: 34.23 & 29.76 kg/m	CSG DEPTH: 1051.5 mKB
TUBING SIZE: none	TBG WEIGHT: n/a	TBG DEPTH: n/a
Elevations KB: 517.48 m	GRD: 513.23 m	CF: 513.48 m

PRODUCING INTERVAL

TYPE: open hole	SIZE: 159 mm	INTERVAL: 1051.5 - 2320 mKB
-----------------	--------------	-----------------------------

RECORDER INFORMATION

TOP S/N: 40434	FILE NAME: 1-36-5-36-8-29w1	RANGE: 20,680 kPa
BOTTOM S/N: 40448	FILE NAME: 1-36-5-36-8-29w1	RANGE: 20,680 kPa
TOP BATTERY S/N: n/a	BOTTOM BATTERY S/N: n/a	
CONNECT TIME: 20:55 Oct 5, 2011	DISCONNECT TIME: 12:32 Oct 26, 2011	

SURFACE TEMP: 4 C	LEASE CONDITION: good
WIRELINE OPERATOR: Bart Royan	PHONE: (306)421-9700
WIRELINE ASSISTANT: n/a	
DIRECTIONS: From junction of hwy #256 & RR 48 south of Cromer: 3.2km west om #48, 1.4km south on 168, west into well.	

DWG WELL HEAD PRESSURES:

TUBING (before survey): 0 kPa	CASING (before survey): 0 kPa
TUBING (after survey): 0 kPa	CASING (after survey): 0 kPa

FLUID LEVEL: n/a	RUN DEPTH: 1011 mKB
TIME ON BOTTOM: 22:51 Oct 5, 2011	TIME OFF BOTTOM: 08:55 Oct 25, 2011

GRADIENT STOPS

DEPTH mKB:	none	FROM:	n/a	UNTIL:	n/a
------------	------	-------	-----	--------	-----

COMMENTS: bridge plug set at 1010 mKB (CE)
--

DESCRIPTION OF WORK DONE:

October 5, 2011

20:55 Pressure trigger activated while being run into the well below a bridge plug on drill pipe by the drilling rig.

22:51 Tools on bottom.

23:08 Bridge plug set, well shut in for build up.

October 25, 2011

08:47 Bridge plug is unset.

08:55 Bridge plug c/w recorders are pulled from the well with tubing by the service rig.

09:57 Recorders at surface.

October 26, 2011

12:32 Download data from recorders and do preliminary report.



TUNDRA OIL & GAS PARTNERSHIP

TUNDRA DALY SINCLAIR (8-36) HZNTL 12-36-8-29

102/12-36-008-29W1/00

LICENSE #: 8183

BAKKEN FORMATION

Open Hole: 1037.78 – 2305.50 mKBMD
(905.989 – 917.400 TVD)

RESERVOIR PRESSURE SURVEY
SEPTEMBER 17th – 26th, 2011

Prepared by: **DOLLCO Well Data Services**
e-mail: dollco@shaw.ca

PO Box 326
417A Mississippian Drive
Estevan, SK
S4A 2A4

Cell: (306) 421 - 7330
Fax: (306) 634 - 7976
Res: (306) 634 - 8761

E-mail: qualityw@sasktel.net

Pressure Survey Report

Company Information

Company Name	TUNDRA OIL & GAS PARTNERSHIP
Contact	JOSH PORTER
e-mail	Josh.Porter@tundraoilandgas.com
Phone	1-204-748-4427
Site Contact	SCOTT MURRAY
Site Phone	1-306-482-7216

Well Information

Well Name	TUNDRA DALY SINCLAIR (8-36) HZNTL 12-36-8-29
Unique Well ID	102/12-36-008-29W1/00
Surface Location	8-36/12-36-8-29W1
Well License Number	8183
Well Type	Horizontal
Well Fluid Type	01 Oil
Field	DALY SINCLAIR

KB Elevation (SL)	517.02 m
CF Elevation (SL)	512.82 m
GL Elevation (SL)	512.76 m
Distance from KB to CF (Log)	4.20 m
KB-GL Offset	4.26 m

Tubing ID	mm
Tubing OD	114.3 mm
Tubing Depth(Log KB)	m
Tubing Depth(TVD KB)	m
Casing ID	mm
Casing OD	177.8 mm
Casing Depth(Log KB)	1037.78 m
Casing Depth(TVD KB)	905.99 m
PBTD(Log KB)	m
PBTD(TVD KB)	m



Pressure Survey Report

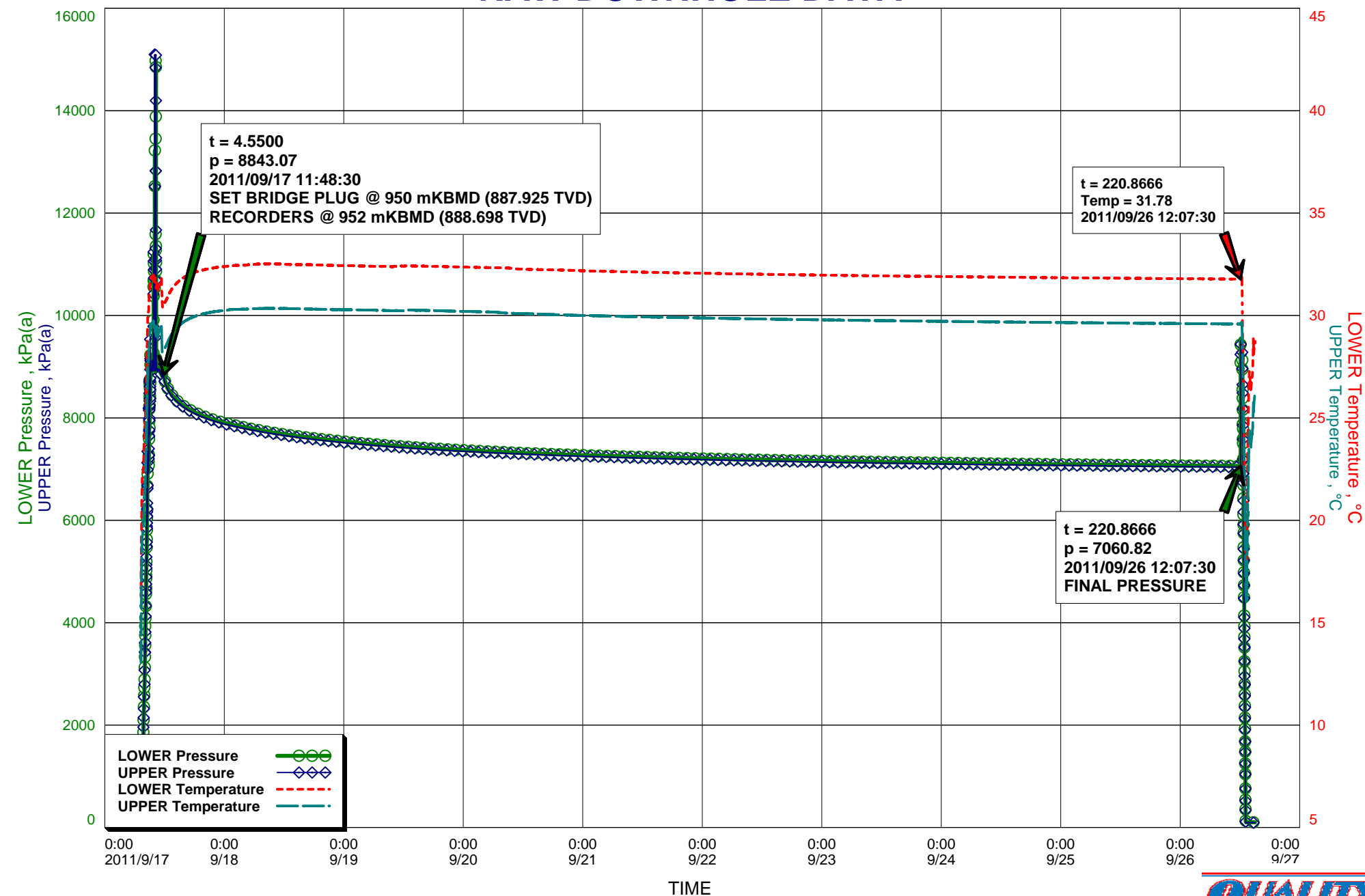
Test Information

Well Name	TUNDRA DALY SINCLAIR (8-36) HZNTL 12-36-8-29
Unique Well ID	102/12-36-008-29W1/00
Surface Location	8-36/12-36-8-29W1
Well License Number	8183
Well Fluid Type	01 Oil
Test Purpose	Initial Test
Test Type	RESERVOIR PRESSURE SURVEY
Formation	BAKKEN
Pool	O.H.: 1037.78 - 2305.50 mKBMD
Well Type Indicator	Horizontal
Test/Prod. Interval Top KB (Log)	1037.78 m
Test/Prod. Interval Base KB (Log)	2305.50 m
Test/Prod Interval Top KB (TVD)	905.99 m
Test/Prod. Interval Base m KB (TVD)	917.40 m
MPP(Log KB)	1671.64 m
MPP(TVD KB)	911.69 m
Date/Time Gauge on Bottom	2011/09/17 09:13:00
Date/Time Gauge Off Bottom	2011/09/26 12:29:00
Time/Date Well Shut-In	2011/09/17 11:48:30
Tubing Pressure Initial	93.01 kPa(a)
Casing Pressure Initial	93.01 kPa(a)
Tubing Pressure: Final	93.01 kPa(a)
Casing Pressure: Final	93.01 kPa(a)
Last Measured Pressure at Run Depth	7060.82 kPa(a)
Reservoir Temperature	31.78 °C
Service Company	Quality Wireline Services Ltd.
Representative	MIKE MUIR
Prepared By	DOLLCO Well Data Services
Qualified By	RICK DOLL
Report Date	2011/10/11

THESE RECORDERS WERE RUN IN A BOMBWELL, BELOW A BRIDGE PLUG
OPEN HOLE: 1037.78 - 2305.50 mKBMD (915.989 - 917.400 TVD)



RAW DOWNHOLE DATA



Recorder Information

Company Name	TUNDRA OIL & GAS PARTNERSHIP
Unique Well ID	102/12-36-008-29W1/00
Well Name	TUNDRA DALY SINCLAIR (8-36) HZNTL 12-36-8-29
Formation	BAKKEN
Start Test Date	2011/09/17
Final Test Date	2011/09/26

Gauge 1

Gauge Name	LOWER	Gauge Type	ELECTRONIC
Gauge Serial Number	40428	Gauge Manufacturer	REAL TIME MEASUREMENTS
Run Depth (Log KB)	952.00 m	Gauge Model	KC2 STRAIN
Date of Last Calibration	2010/12/16	Maximum Recorder Range	20680.00 kPa
Gauge Start Date	2011/09/17	Gauge Start Time	07:15:30
Gauge Stop Date	2011/09/26	Gauge Stop Time	15:03:00
Date Gauge On Bottom	2011/09/17	Time Gauge On Bottom	09:13:00
Date Gauge Off Bottom	2011/09/26	Time Gauge Off Bottom	12:29:00

Gauge 2

Gauge Name	UPPER	Gauge Type	ELECTRONIC
Gauge Serial Number	40420	Gauge Manufacturer	REAL TIME MEASUREMENTS
Run Depth (Log KB)	951.70 m	Gauge Model	KC2 STRAIN
Date of Last Calibration	2008/11/04	Maximum Recorder Range	20680.00 kPa
Gauge Start Date	2011/09/17	Gauge Start Time	07:15:30
Gauge Stop Date	2011/09/26	Gauge Stop Time	15:03:00
Date Gauge On Bottom	2011/09/17	Time Gauge On Bottom	09:13:00
Date Gauge Off Bottom	2011/09/26	Time Gauge Off Bottom	12:29:00

TUNDRA OIL & GAS PARTNERSHIP
102/12-36-008-29W1/00
Start Test Date: 2011/09/17
Final Test Date: 2011/09/26

TUNDRA DALY SINCLAIR (8-36) HZNTL 12-36-8-29
Formation: BAKKEN
Pool: O.H.: 1037.78 - 2305.50 mKBMD

RESERVOIR PRESSURE SURVEY

	LOWER Date yyyy/mm/dd	LOWER Clk Time hh:mm:ss	LOWER Time hr	LOWER Pres. kPa(a)	LOWER Temp. °C	UPPER Time hr	UPPER Pres. kPa(a)	UPPER Temp. °C
1	2011/09/17	07:15:30	0.0000	238.12	15.82	0.0000	224.29	12.83
2	2011/09/17	07:15:30	0.0000	ACTIVATE RECORDERS S/N: 40428(L) & 40420(U)				
3	2011/09/17	07:16:00	0.0083	237.77	16.25	0.0083	232.78	13.06
4	2011/09/17	09:13:00	1.9583	8932.24	31.75	1.9583	8918.14	29.57
5	2011/09/17	09:13:00	1.9583	RECORDERS AT 952 mKB (888.698 TVD)				
6	2011/09/17	09:13:30	1.9666	8938.03	31.75	1.9666	8918.10	29.57
7	2011/09/17	09:16:00	2.0083	8965.45	31.77	2.0083	8909.90	29.59
8	2011/09/17	11:16:00	4.0083	8872.41	31.61	4.0083	8845.88	29.42
9	2011/09/17	11:48:30	4.5500	8843.07	30.52	4.5500	8806.22	28.29
10	2011/09/17	11:48:30	4.5500	BRIDGE PLUG SET @ 950 mKB (887.925 TVD)				
11	2011/09/17	11:49:00	4.5583	8831.99	30.53	4.5583	8800.97	28.29
12	2011/09/17	13:16:00	6.0083	8476.65	31.21	6.0083	8453.18	29.02
13	2011/09/17	15:16:00	8.0083	8272.36	31.75	8.0083	8250.63	29.58
14	2011/09/17	17:16:00	10.0083	8146.11	32.03	10.0083	8124.62	29.88
15	2011/09/17	19:16:00	12.0083	8053.73	32.19	12.0083	8032.67	30.05
16	2011/09/17	21:16:00	14.0083	7981.25	32.30	14.0083	7960.25	30.16
17	2011/09/17	23:16:00	16.0083	7921.53	32.37	16.0166	7900.34	30.23
18	2011/09/18	01:16:00	18.0083	7872.70	32.43	18.0166	7851.95	30.29
19	2011/09/18	03:16:00	20.0083	7829.59	32.45	20.0166	7808.84	30.31
20	2011/09/18	05:16:00	22.0083	7790.57	32.49	22.0166	7769.87	30.33
21	2011/09/18	07:16:00	24.0083	7753.70	32.52	24.0166	7732.73	30.34
22	2011/09/18	09:16:00	26.0083	7719.87	32.53	26.0166	7699.17	30.35
23	2011/09/18	11:16:00	28.0083	7688.65	32.52	28.0166	7668.10	30.34
24	2011/09/18	13:16:00	30.0083	7659.99	32.49	30.0166	7639.51	30.34
25	2011/09/18	15:16:00	32.0083	7633.76	32.48	32.0166	7613.29	30.33
26	2011/09/18	17:16:00	34.0083	7609.14	32.47	34.0166	7588.91	30.31
27	2011/09/18	19:16:00	36.0083	7586.65	32.46	36.0166	7566.16	30.30
28	2011/09/18	21:16:00	38.0083	7565.31	32.45	38.0166	7545.13	30.29
29	2011/09/18	23:16:00	40.0083	7545.56	32.44	40.0166	7524.98	30.29
30	2011/09/19	01:16:00	42.0083	7526.12	32.43	42.0166	7505.76	30.28
31	2011/09/19	03:16:00	44.0083	7508.07	32.42	44.0166	7487.78	30.27
32	2011/09/19	05:16:00	46.0083	7490.72	32.40	46.0166	7470.46	30.26
33	2011/09/19	07:16:00	48.0083	7474.43	32.39	48.0166	7454.32	30.25
34	2011/09/19	09:16:00	50.0083	7459.21	32.39	50.0166	7439.05	30.24
35	2011/09/19	11:16:00	52.0083	7444.94	32.41	52.0166	7424.82	30.24
36	2011/09/19	13:16:00	54.0083	7431.22	32.43	54.0166	7411.14	30.27
37	2011/09/19	15:16:00	56.0083	7418.07	32.41	56.0166	7398.29	30.25
38	2011/09/19	17:16:00	58.0083	7405.65	32.40	58.0166	7385.91	30.25
39	2011/09/19	19:16:00	60.0083	7394.26	32.39	60.0166	7374.04	30.23
40	2011/09/19	21:16:00	62.0083	7382.93	32.38	62.0166	7362.92	30.22

LOWER Serial Number: 40428 Start Date: 2011/09/17 07:15:30 Run Depth: 952.00
UPPER Serial Number: 40420 Start Date: 2011/09/17 07:15:30 Run Depth: 951.70
Print Filter: Print every 2 hour

TUNDRA OIL & GAS PARTNERSHIP
102/12-36-008-29W1/00
Start Test Date: 2011/09/17
Final Test Date: 2011/09/26

TUNDRA DALY SINCLAIR (8-36) HZNTL 12-36-8-29
Formation: BAKKEN
Pool: O.H.: 1037.78 - 2305.50 mKBMD

RESERVOIR PRESSURE SURVEY

	LOWER Date yyyy/mm/dd	LOWER Clk Time hh:mm:ss	LOWER Time hr	LOWER Pres. kPa(a)	LOWER Temp. °C	UPPER Time hr	UPPER Pres. kPa(a)	UPPER Temp. °C
41	2011/09/19	23:16:30	64.0166	7372.36	32.37	64.0166	7352.35	30.21
42	2011/09/20	01:16:30	66.0166	7362.08	32.36	66.0166	7342.09	30.19
43	2011/09/20	03:16:30	68.0166	7352.24	32.35	68.0166	7332.04	30.19
44	2011/09/20	05:16:30	70.0166	7342.74	32.34	70.0166	7322.76	30.17
45	2011/09/20	07:16:30	72.0166	7333.77	32.33	72.0166	7313.79	30.15
46	2011/09/20	09:16:30	74.0166	7325.07	32.32	74.0166	7305.06	30.11
47	2011/09/20	11:16:30	76.0166	7317.08	32.27	76.0166	7297.07	30.10
48	2011/09/20	13:16:30	78.0166	7309.06	32.25	78.0166	7289.21	30.08
49	2011/09/20	15:16:30	80.0166	7301.41	32.24	80.0166	7281.35	30.07
50	2011/09/20	17:16:30	82.0166	7294.21	32.23	82.0166	7274.46	30.05
51	2011/09/20	19:16:30	84.0166	7287.26	32.22	84.0166	7267.15	30.03
52	2011/09/20	21:16:30	86.0166	7280.20	32.21	86.0166	7260.31	30.02
53	2011/09/20	23:16:30	88.0166	7273.79	32.19	88.0166	7253.69	30.01
54	2011/09/21	01:16:30	90.0166	7266.92	32.17	90.0166	7247.05	29.99
55	2011/09/21	03:16:30	92.0166	7260.81	32.16	92.0166	7240.71	29.98
56	2011/09/21	05:16:30	94.0166	7254.74	32.15	94.0166	7234.84	29.97
57	2011/09/21	07:16:30	96.0166	7248.84	32.14	96.0166	7228.98	29.96
58	2011/09/21	09:16:30	98.0166	7243.34	32.13	98.0166	7223.23	29.95
59	2011/09/21	11:16:30	100.0166	7237.75	32.12	100.0166	7217.53	29.93
60	2011/09/21	13:16:30	102.0166	7232.44	32.11	102.0166	7212.36	29.93
61	2011/09/21	15:16:30	104.0166	7227.21	32.10	104.0166	7206.92	29.92
62	2011/09/21	17:16:30	106.0166	7221.94	32.09	106.0166	7202.03	29.91
63	2011/09/21	19:16:30	108.0166	7217.24	32.08	108.0166	7196.91	29.90
64	2011/09/21	21:16:30	110.0166	7212.17	32.07	110.0166	7192.25	29.89
65	2011/09/21	23:16:30	112.0166	7207.63	32.06	112.0166	7187.68	29.88
66	2011/09/22	01:16:30	114.0166	7202.88	32.06	114.0166	7182.83	29.87
67	2011/09/22	03:16:30	116.0166	7198.71	32.05	116.0166	7178.38	29.86
68	2011/09/22	05:16:30	118.0166	7194.17	32.04	118.0166	7173.97	29.85
69	2011/09/22	07:16:30	120.0166	7189.73	32.03	120.0166	7169.71	29.85
70	2011/09/22	09:16:30	122.0166	7185.47	32.02	122.0166	7165.67	29.84
71	2011/09/22	11:16:30	124.0166	7181.37	32.02	124.0166	7161.51	29.84
72	2011/09/22	13:16:30	126.0166	7177.53	32.01	126.0166	7157.63	29.82
73	2011/09/22	15:16:30	128.0166	7173.64	32.00	128.0166	7153.69	29.82
74	2011/09/22	17:16:30	130.0166	7169.88	31.99	130.0166	7149.90	29.81
75	2011/09/22	19:16:30	132.0166	7166.04	31.99	132.0166	7146.13	29.80
76	2011/09/22	21:16:30	134.0166	7162.45	31.98	134.0166	7142.66	29.80
77	2011/09/22	23:16:30	136.0166	7159.06	31.97	136.0166	7138.84	29.79
78	2011/09/23	01:16:30	138.0166	7155.59	31.97	138.0166	7135.67	29.78
79	2011/09/23	03:16:30	140.0166	7152.20	31.96	140.0166	7132.04	29.77
80	2011/09/23	05:16:30	142.0166	7148.85	31.96	142.0166	7128.74	29.77

LOWER Serial Number: 40428 Start Date: 2011/09/17 07:15:30 Run Depth: 952.00
UPPER Serial Number: 40420 Start Date: 2011/09/17 07:15:30 Run Depth: 951.70
Print Filter: Print every 2 hour

TUNDRA OIL & GAS PARTNERSHIP
102/12-36-008-29W1/00
Start Test Date: 2011/09/17
Final Test Date: 2011/09/26

TUNDRA DALY SINCLAIR (8-36) HZNTL 12-36-8-29
Formation: BAKKEN
Pool: O.H.: 1037.78 - 2305.50 mKBMD

RESERVOIR PRESSURE SURVEY

	LOWER Date yyyy/mm/dd	LOWER Clk Time hh:mm:ss	LOWER Time hr	LOWER Pres. kPa(a)	LOWER Temp. °C	UPPER Time hr	UPPER Pres. kPa(a)	UPPER Temp. °C
81	2011/09/23	07:16:30	144.0166	7145.62	31.95	144.0166	7125.73	29.76
82	2011/09/23	09:16:30	146.0166	7142.30	31.94	146.0166	7122.42	29.76
83	2011/09/23	11:16:30	148.0166	7139.23	31.94	148.0166	7119.21	29.75
84	2011/09/23	13:16:30	150.0166	7136.23	31.93	150.0166	7116.30	29.74
85	2011/09/23	15:16:30	152.0166	7133.37	31.93	152.0166	7113.36	29.74
86	2011/09/23	17:16:30	154.0166	7130.66	31.92	154.0166	7110.56	29.74
87	2011/09/23	19:16:30	156.0166	7127.74	31.92	156.0166	7107.89	29.73
88	2011/09/23	21:16:30	158.0166	7125.01	31.91	158.0166	7104.90	29.72
89	2011/09/23	23:16:30	160.0166	7122.21	31.90	160.0166	7102.45	29.72
90	2011/09/24	01:16:30	162.0166	7119.42	31.90	162.0166	7099.77	29.71
91	2011/09/24	03:16:30	164.0166	7116.93	31.89	164.0166	7097.05	29.71
92	2011/09/24	05:16:30	166.0166	7114.34	31.89	166.0166	7094.51	29.70
93	2011/09/24	07:16:30	168.0166	7111.75	31.88	168.0166	7091.96	29.70
94	2011/09/24	09:16:30	170.0166	7109.21	31.88	170.0166	7089.18	29.69
95	2011/09/24	11:16:30	172.0166	7106.81	31.87	172.0166	7086.66	29.68
96	2011/09/24	13:16:30	174.0166	7104.30	31.87	174.0166	7084.56	29.68
97	2011/09/24	15:16:30	176.0166	7102.11	31.86	176.0166	7081.95	29.67
98	2011/09/24	17:16:30	178.0166	7099.83	31.86	178.0166	7079.70	29.67
99	2011/09/24	19:16:30	180.0166	7097.51	31.86	180.0166	7077.51	29.66
100	2011/09/24	21:16:30	182.0166	7095.11	31.85	182.0166	7075.28	29.66
101	2011/09/24	23:16:30	184.0166	7093.20	31.85	184.0166	7073.17	29.66
102	2011/09/25	01:16:30	186.0166	7090.99	31.84	186.0166	7071.02	29.65
103	2011/09/25	03:16:30	188.0166	7088.84	31.84	188.0166	7069.12	29.65
104	2011/09/25	05:16:30	190.0166	7086.97	31.84	190.0166	7066.82	29.64
105	2011/09/25	07:16:30	192.0166	7084.84	31.83	192.0166	7064.92	29.64
106	2011/09/25	09:16:30	194.0166	7082.81	31.83	194.0166	7062.79	29.64
107	2011/09/25	11:16:30	196.0166	7080.78	31.82	196.0166	7060.54	29.63
108	2011/09/25	13:16:30	198.0166	7078.83	31.82	198.0166	7058.81	29.63
109	2011/09/25	15:16:30	200.0166	7076.93	31.81	200.0166	7057.00	29.62
110	2011/09/25	17:16:30	202.0166	7075.27	31.81	202.0166	7055.12	29.62
111	2011/09/25	19:16:30	204.0166	7073.40	31.81	204.0166	7053.56	29.62
112	2011/09/25	21:16:30	206.0166	7071.31	31.80	206.0166	7051.55	29.61
113	2011/09/25	23:16:30	208.0166	7069.58	31.80	208.0166	7049.72	29.61
114	2011/09/26	01:16:30	210.0166	7067.77	31.79	210.0166	7047.91	29.60
115	2011/09/26	03:16:30	212.0166	7066.17	31.79	212.0166	7046.21	29.60
116	2011/09/26	05:16:30	214.0166	7064.64	31.79	214.0166	7044.70	29.60
117	2011/09/26	07:16:30	216.0166	7063.20	31.78	216.0166	7043.12	29.59
118	2011/09/26	09:16:30	218.0166	7061.37	31.78	218.0166	7041.56	29.59
119	2011/09/26	11:16:30	220.0166	7059.81	31.78	220.0166	7039.81	29.59
120	2011/09/26	12:07:30	220.8666	7060.82	31.78	220.8666	7040.56	29.58

LOWER Serial Number: 40428 Start Date: 2011/09/17 07:15:30 Run Depth: 952.00
UPPER Serial Number: 40420 Start Date: 2011/09/17 07:15:30 Run Depth: 951.70
Print Filter: Print every 2 hour

TUNDRA OIL & GAS PARTNERSHIP
 102/12-36-008-29W1/00
 Start Test Date: 2011/09/17
 Final Test Date: 2011/09/26

TUNDRA DALY SINCLAIR (8-36) HZNTL 12-36-8-29
 Formation: BAKKEN
 Pool: O.H.: 1037.78 - 2305.50 mKBMD

RESERVOIR PRESSURE SURVEY

	LOWER Date yyyy/mm/dd	LOWER Clk Time hh:mm:ss	LOWER Time hr	LOWER Pres. kPa(a)	LOWER Temp. °C	UPPER Time hr	UPPER Pres. kPa(a)	UPPER Temp. °C
121	2011/09/26	12:07:30	220.8666	FINAL PRESSURE, PREPARE TO UNSET BRIDGE PLUG				
122	2011/09/26	12:08:00	220.8750	7065.46	31.78	220.8750	7041.25	29.58
123	2011/09/26	12:15:00	220.9916	9506.06	31.83	220.9916	9479.79	29.64
124	2011/09/26	12:15:00	220.9916	BRIDGE PLUG UNSET				
125	2011/09/26	12:15:30	221.0000	9505.63	31.83	221.0000	9480.01	29.65
126	2011/09/26	12:29:00	221.2250	9130.18	30.52	221.2250	9239.98	28.67
127	2011/09/26	12:29:00	221.2250	TOOLS PULLED FROM WELL WITH TUBING				
128	2011/09/26	12:29:30	221.2333	9173.41	30.20	221.2333	9156.43	28.51
129	2011/09/26	13:16:30	222.0166	101.37	18.14	222.0166	90.24	16.16
130	2011/09/26	13:19:00	222.0583	101.12	18.09	222.0583	89.89	16.06
131	2011/09/26	13:19:00	222.0583	TOOLS AT SURFACE				
132	2011/09/26	13:19:30	222.0666	101.33	18.07	222.0666	90.07	16.04
133	2011/09/26	15:03:00	223.7916	99.70	28.74	223.7916	94.07	26.21

LOWER Serial Number: 40428 Start Date: 2011/09/17 07:15:30 Run Depth: 952.00
 UPPER Serial Number: 40420 Start Date: 2011/09/17 07:15:30 Run Depth: 951.70
 Print Filter: Print every 2 hour



DATE: September 17 - 26, 2011	COMPANY: Tundra Oil & Gas Partnership
WELLNAME: Tundra Daly Sinclair (8-36) Hzntl 12-36-8-29 WPM	ADDRESS: Virden, MB
LOCATION: (8-36) 12-36-8-29 W1	UWI: 102.12-36-008-29W1.00
FIELD: Daly Sinclair	FORMATION: Bakken
CO HQ REP: Josh Porter	PHONE: 204-748-4427
FIELD REP: Scott Murray	PHONE: 306-482-7216
REPORTS TO (NAME & EMAIL ADDRESS): Eric Bjornsson - eric.bjornsson@tundraoilandgas.com Tyler Routledge - tyler.routledge@tundraoilandgas.com Tim Howell - tim.howell@tundraoilandgas.com Craig Lane - craig.lane@tundraoilandgas.com Bill Jenkins - bill.jenkins@tundraoilandgas.com Adam Berke - adam.berke@tundraoilandgas.com Josh Porter - josh.porter@tundraoilandgas.com	

STATUS: oil well (completion)		TEST TYPE: build up
ESTIMATED H2S CONTENT: 0%		ESTIMATED CO2 CONTENT: 0%
PRODUCING THROUGH: tubing		SHUT IN TIME/DATE: 11:45 Sep 17/11
KOP: 674.4 mKB	TVD: ds included	LICENCE #: 8183
PBTD: n/a	TD: 2305.5 mKB	WELL TYPE: horizontal
CASING SIZE: 177.8 mm	CSG WEIGHT: 34.23 & 29.76	CSG DEPTH: 1037.78 mKB
TUBING SIZE: none	TBG WEIGHT: none	TBG DEPTH: none
Elevations KB: 517.02 m	GRD: 512.76 m	CF: 512.82 m

PRODUCING INTERVAL

TYPE: open hole	SIZE: n/a	INTERVAL: 1037.78 - 2305.5 mKB
-----------------	-----------	--------------------------------

RECORDER INFORMATION

TOP S/N: 40420	FILE NAME: 8-36-12-36-8-29W1	RANGE: 20,680 kpa
BOTTOM S/N: 40428	FILE NAME: 8-36-12-36-8-29W1	RANGE: 20,680 kpa
TOP BATTERY S/N: n/a	BOTTOM BATTERY S/N: n/a	
CONNECT TIME: 07:15 Sep 17/11	DISCONNECT TIME: 15:09 Sep 26/11	

SURFACE TEMP: 23 C	LEASE CONDITION: good
WIRELINE OPERATOR: Mike Muir	PHONE: 306-421-7330
WIRELINE ASSISTANT: n/a	
DIRECTIONS: From the junction of #2 and #256 north: 14.6 km north on #256, 3.2 km west on #48, 0.8 km south on #168, west into General rig.	

DWG WELL HEAD PRESSURES:

TUBING (before survey): 0 kpa	CASING (before survey): 0 kpa
TUBING (after survey): 0 kpa	CASING (after survey): 0 kpa

FLUID LEVEL: n/a	RUN DEPTH: 952 mKB
TIME ON BOTTOM: 09:13 Sep 17/11	TIME OFF BOTTOM: 12:29 Sep 26/11

GRADIENT STOPS

DEPTH mKB:	n/a	FROM:	n/a	UNTIL:	n/a
------------	-----	-------	-----	--------	-----

COMMENTS: These recorders were run and pulled by pipe below a bridge plug.
--

DESCRIPTION OF WORK DONE: September 14, 2011 Install 21 mPa KC-2 recorders in a bombwell, deliver to Weatherford Completions
--

to be run with their bridge plug.

September 17, 2011

07:15 - the recorders were set to logging mode by a pressure trigger while being run into the well by a drilling rig.

09:13 - the recorders were at 952 mKB.

11:45 - the bridge plug was set at 950 mKB (recorders at 952 mKB), the plug was released and the drill pipe was pulled and laid down.

September 26, 2011

12:08 - a service rig ran tubing into the well, latched onto, and prepared to unset, the bridge plug.

12:15 - the bridge plug was unset.

12:29 - the tools were pulled from the well with the tubing.

13:19 - the recorders were at surface.

15:09 - the recorders were downloaded.



TUNDRA OIL & GAS PARTNERSHIP

TUNDRA DOWNSPACING (-36) 13-36-8-29

103/13-36-008-29W1/00

LICENSE #: 8184

BAKKEN FORMATION

Open Hole: 1010.95 - 2302.00 mKBMD

(905.656 – 916.161 TVD)

RESERVOIR PRESSURE SURVEY DATA
SEPTEMBER 26th - OCTOBER 7th, 2011

Prepared by: **DOLLCO Well Data Services**
e-mail: dollco@shaw.ca

PO Box 326
417A Mississippian Drive
Estevan, SK
S4A 2A4

Cell: (306) 421 - 7330
Fax: (306) 634 - 7976
Res: (306) 634 - 8761

E-mail: qualityw@sasktel.net

Pressure Survey Report

Company Information

Company Name	TUNDRA OIL & GAS PARTNERSHIP
Contact	JOSH PORTER
e-mail	Josh.Porter@tundraoilandgas.com
Phone	1-204-851-2504
Site Contact	SCOTT MURRAY
Site Phone	1-306-452-7216

Well Information

Well Name	TUNDRA DOWNSPACING (9-36) 13-36-8-29
Unique Well ID	103/13-36-008-29W1/00
Surface Location	9-36 / 13-36-8-29W1
Well License Number	8184
Well Type	Horizontal
Well Fluid Type	01 Oil
Field	DOWNSPACING

KB Elevation (SL)	515.55 m
CF Elevation (SL)	511.35 m
GL Elevation (SL)	511.35 m
Distance from KB to CF (Log)	4.20 m
KB-GL Offset	4.20 m

Tubing ID	mm
Tubing OD	mm
Tubing Depth(Log KB)	m
Tubing Depth(TVD KB)	m
Casing ID	mm
Casing OD	177.8 mm
Casing Depth(Log KB)	1010.95 m
Casing Depth(TVD KB)	905.66 m
PBTD(Log KB)	m
PBTD(TVD KB)	m



Pressure Survey Report

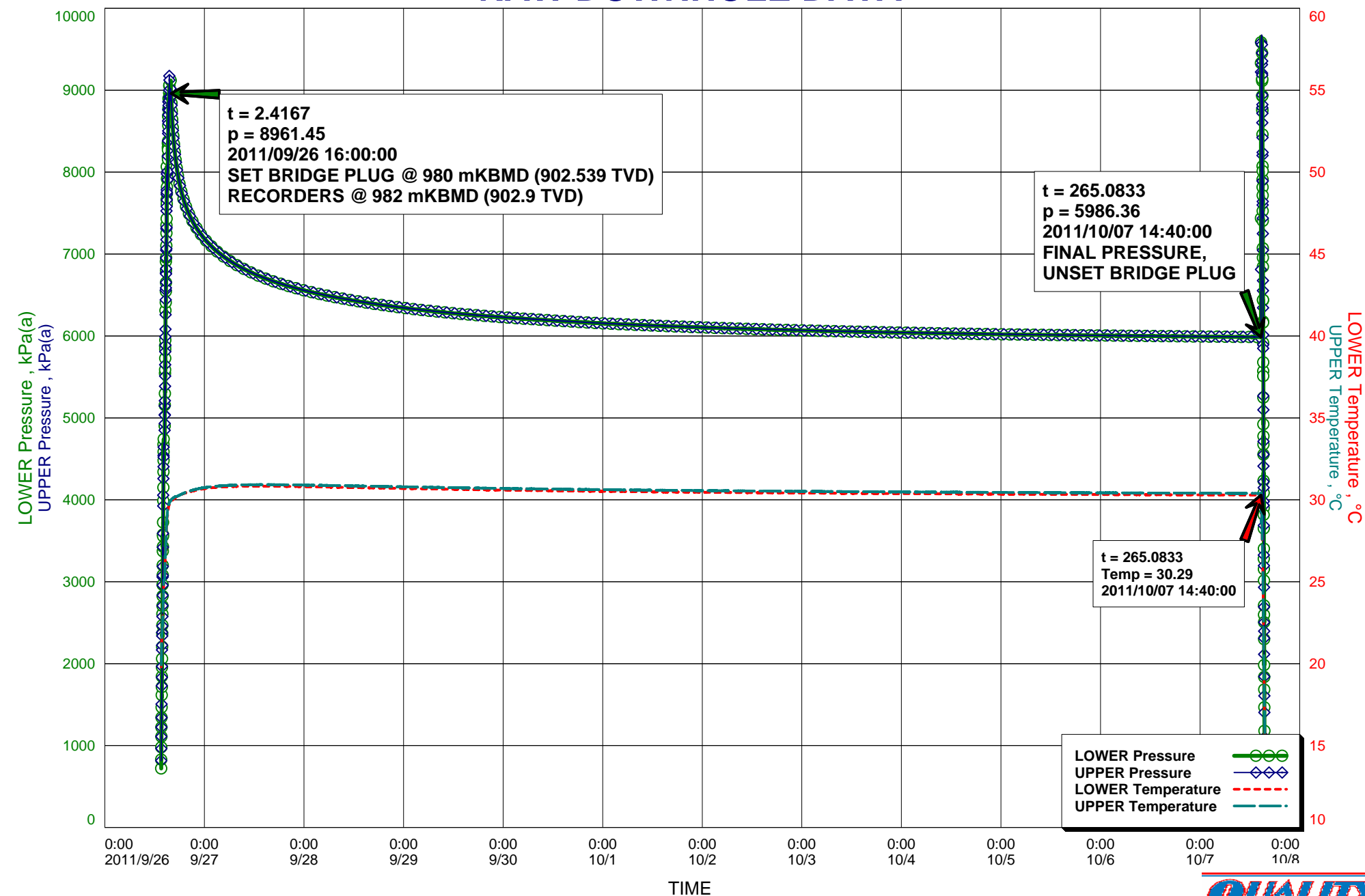
Test Information

Well Name	TUNDRA DOWNSPACING (9-36) 13-36-8-29
Unique Well ID	103/13-36-008-29W1/00
Surface Location	9-36 / 13-36-8-29W1
Well License Number	8184
Well Fluid Type	01 Oil
Test Purpose	Initial Test
Test Type	RESERVOIR PRESSURE SURVEY
Formation	BAKKEN
Pool	O.H.: 1010.95 - 2302.00 mKBMD
Well Type Indicator	Horizontal
Test/Prod. Interval Top KB (Log)	1010.95 m
Test/Prod. Interval Base KB (Log)	2302.00 m
Test/Prod Interval Top KB (TVD)	905.66 m
Test/Prod. Interval Base m KB (TVD)	916.16 m
MPP(Log KB)	1656.47 m
MPP(TVD KB)	910.91 m
Date/Time Gauge on Bottom	2011/09/26 15:57:00
Date/Time Gauge Off Bottom	2011/10/07 14:40:00
Time/Date Well Shut-In	2011/09/26 16:00:00
Tubing Pressure Initial	93.01 kPa(a)
Casing Pressure Initial	93.01 kPa(a)
Tubing Pressure: Final	93.01 kPa(a)
Casing Pressure: Final	93.01 kPa(a)
Last Measured Pressure at Run Depth	5986.36 kPa(a)
Reservoir Temperature	30.29 °C
Service Company	Quality Wireline Services Ltd.
Representative	MIKE MUIR
Prepared By	DOLLCO Well Data Services
Qualified By	RICK DOLL
Report Date	2011/11/30

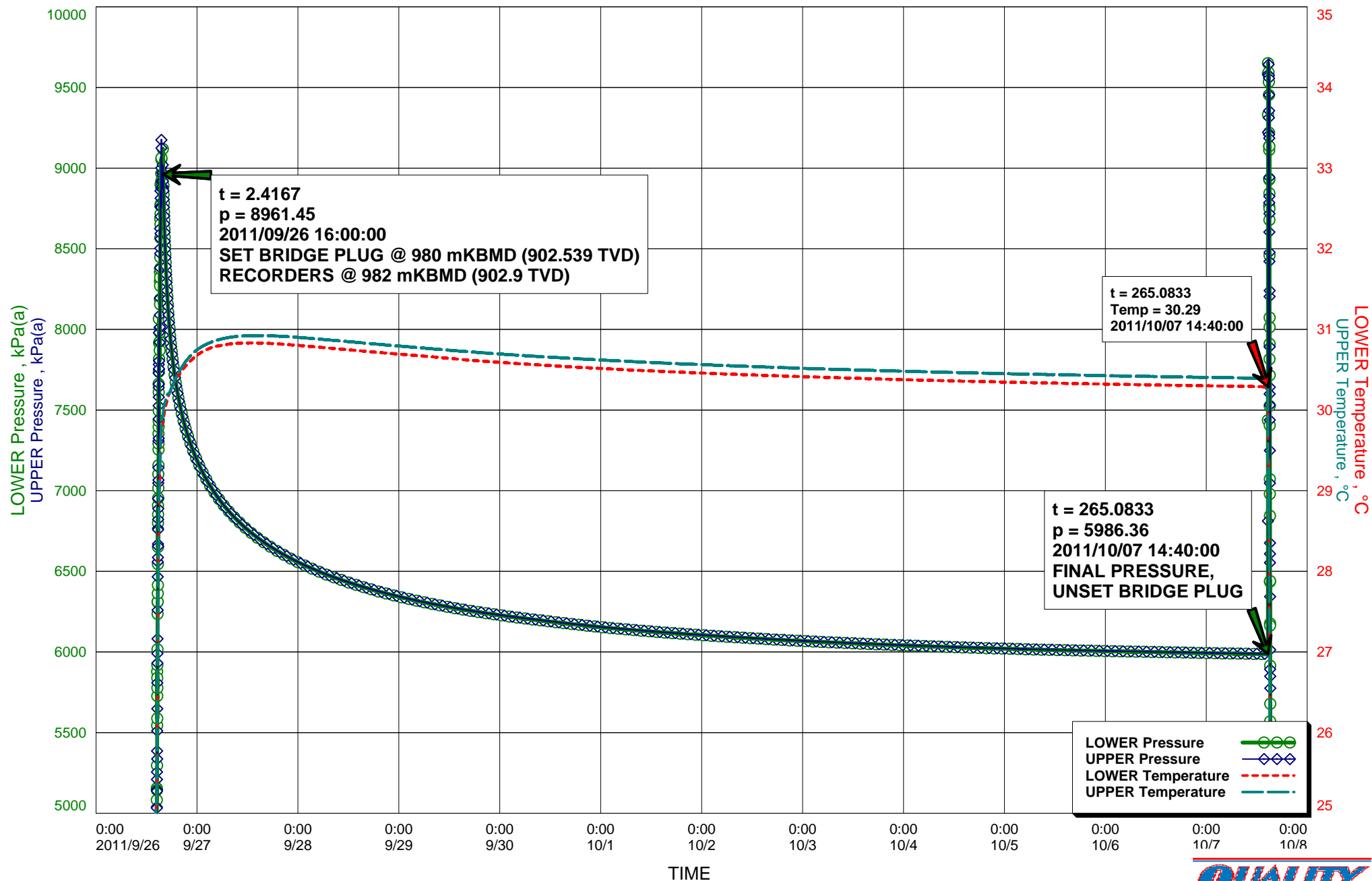
OPEN HOLE: 1010.95 - 2302.00 mKBMD (905.656 - 916.161 TVD)
RECORDERS WERE RUN IN THE WELL BELOW A BRIDGE PLUG



RAW DOWNHOLE DATA



RAW DOWNHOLE DATA



Recorder Information

Company Name	TUNDRA OIL & GAS PARTNERSHIP
Unique Well ID	103/13-36-008-29W1/00
Well Name	TUNDRA DOWNSPACING (9-36) 13-36-8-29
Formation	BAKKEN
Start Test Date	2011/09/26
Final Test Date	2011/10/07

Gauge 1

Gauge Name	LOWER	Gauge Type	ELECTRONIC
Gauge Serial Number	40442	Gauge Manufacturer	REAL TIME MEASUREMENTS
Run Depth (Log KB)	982.00 m	Gauge Model	KC2 STRAIN
Date of Last Calibration	2010/04/08	Maximum Recorder Range	20680.00 kPa
Gauge Start Date	2011/09/26	Gauge Start Time	13:35:00
Gauge Stop Date	2011/10/07	Gauge Stop Time	22:00:00
Date Gauge On Bottom	2011/09/26	Time Gauge On Bottom	15:57:00
Date Gauge Off Bottom	2011/10/07	Time Gauge Off Bottom	14:40:00

Gauge 2

Gauge Name	UPPER	Gauge Type	ELECTRONIC
Gauge Serial Number	40432	Gauge Manufacturer	REAL TIME MEASUREMENTS
Run Depth (Log KB)	981.70 m	Gauge Model	KC2 STRAIN
Date of Last Calibration	2010/06/22	Maximum Recorder Range	20680.00 kPa
Gauge Start Date	2011/09/26	Gauge Start Time	13:35:00
Gauge Stop Date	2011/10/07	Gauge Stop Time	22:00:00
Date Gauge On Bottom	2011/09/26	Time Gauge On Bottom	15:57:00
Date Gauge Off Bottom	2011/10/07	Time Gauge Off Bottom	14:40:00

TUNDRA OIL & GAS PARTNERSHIP

103/13-36-008-29W1/00

Start Test Date: 2011/09/26

Final Test Date: 2011/10/07

TUNDRA DOWNSPACING (9-36) 13-36-8-29

Formation: BAKKEN

RESERVOIR PRESSURE SURVEY

Pool: O.H.: 1010.95 - 2302.00 mKBMD

	LOWER Date yyyy/mm/dd	LOWER Clk Time hh:mm:ss	LOWER Time hr	LOWER Pres. kPa(a)	LOWER Temp. °C	UPPER Time hr	UPPER Pres. kPa(a)	UPPER Temp. °C
1	2011/09/26	13:35:30	0.0083	720.49	19.81	0.0083	816.02	19.92
2	2011/09/26	13:35:30	0.0083	ACTIVATE RECORDERS S/N: 40442(L) & 40432(U).				
3	2011/09/26	13:36:00	0.0167	828.42	19.90	0.0167	852.65	19.99
4	2011/09/26	15:35:30	2.0083	8909.22	29.75	2.0083	8909.85	29.83
5	2011/09/26	15:57:00	2.3667	8967.92	29.86	2.3667	8958.92	29.96
6	2011/09/26	15:57:00	2.3667	RECORDERS AT 982.0 mKBMD (902.90 TVD)				
7	2011/09/26	15:57:30	2.3750	8963.15	29.86	2.3750	8952.91	29.97
8	2011/09/26	16:00:00	2.4167	8961.45	29.88	2.4167	8944.66	29.99
9	2011/09/26	16:00:00	2.4167	SET BRIDGE PLUG @ 980.0 mKBMD (902.539 TVD)				
10	2011/09/26	16:00:30	2.4250	8940.77	29.89	2.4250	8930.14	30.00
11	2011/09/26	17:35:30	4.0083	7970.43	30.23	4.0083	7970.88	30.23
12	2011/09/26	19:35:30	6.0083	7575.33	30.43	6.0083	7576.52	30.46
13	2011/09/26	21:35:30	8.0083	7360.21	30.56	8.0083	7361.65	30.62
14	2011/09/26	23:35:30	10.0083	7213.45	30.66	10.0083	7214.53	30.73
15	2011/09/27	01:35:30	12.0083	7100.23	30.73	12.0083	7101.39	30.80
16	2011/09/27	03:35:30	14.0083	7010.11	30.78	14.0083	7011.31	30.84
17	2011/09/27	05:35:30	16.0083	6935.29	30.80	16.0083	6936.45	30.88
18	2011/09/27	07:35:30	18.0083	6871.04	30.82	18.0083	6872.47	30.90
19	2011/09/27	09:35:30	20.0083	6816.00	30.83	20.0083	6817.45	30.91
20	2011/09/27	11:35:30	22.0083	6767.26	30.83	22.0083	6768.62	30.92
21	2011/09/27	13:35:30	24.0083	6723.99	30.83	24.0083	6725.52	30.92
22	2011/09/27	15:35:30	26.0083	6685.11	30.83	26.0083	6686.70	30.92
23	2011/09/27	17:35:30	28.0083	6650.18	30.83	28.0083	6651.80	30.92
24	2011/09/27	19:35:30	30.0083	6618.30	30.82	30.0083	6619.76	30.92
25	2011/09/27	21:35:30	32.0083	6589.08	30.81	32.0083	6590.58	30.91
26	2011/09/27	23:35:30	34.0083	6561.59	30.80	34.0083	6563.19	30.90
27	2011/09/28	01:35:30	36.0083	6536.83	30.80	36.0083	6538.39	30.89
28	2011/09/28	03:35:30	38.0083	6513.71	30.79	38.0083	6515.03	30.89
29	2011/09/28	05:35:30	40.0083	6492.18	30.78	40.0083	6493.64	30.88
30	2011/09/28	07:35:30	42.0083	6471.81	30.77	42.0083	6473.36	30.87
31	2011/09/28	09:35:30	44.0083	6452.81	30.76	44.0083	6454.50	30.86
32	2011/09/28	11:35:30	46.0083	6434.75	30.75	46.0083	6436.58	30.85
33	2011/09/28	13:35:30	48.0083	6417.83	30.74	48.0083	6419.61	30.84
34	2011/09/28	15:35:30	50.0083	6401.99	30.73	50.0083	6403.59	30.83
35	2011/09/28	17:35:30	52.0083	6386.56	30.72	52.0083	6388.32	30.82
36	2011/09/28	19:35:30	54.0083	6372.02	30.71	54.0083	6373.43	30.81
37	2011/09/28	21:35:30	56.0083	6358.33	30.70	56.0083	6360.01	30.80
38	2011/09/28	23:35:30	58.0083	6345.24	30.69	58.0083	6347.07	30.80
39	2011/09/29	01:35:30	60.0083	6332.87	30.69	60.0083	6334.44	30.79
40	2011/09/29	03:35:30	62.0083	6320.97	30.68	62.0083	6322.60	30.78

LOWER Serial Number: 40442 Start Date: 2011/09/26 13:35:00 Run Depth: 982.00

UPPER Serial Number: 40432 Start Date: 2011/09/26 13:35:00 Run Depth: 981.70

Print Filter: Print every 2 hour

TUNDRA OIL & GAS PARTNERSHIP

103/13-36-008-29W1/00

Start Test Date: 2011/09/26

Final Test Date: 2011/10/07

TUNDRA DOWNSPACING (9-36) 13-36-8-29

Formation: BAKKEN

RESERVOIR PRESSURE SURVEY

Pool: O.H.: 1010.95 - 2302.00 mKBMD

	LOWER Date yyyy/mm/dd	LOWER Clk Time hh:mm:ss	LOWER Time hr	LOWER Pres. kPa(a)	LOWER Temp. °C	UPPER Time hr	UPPER Pres. kPa(a)	UPPER Temp. °C
41	2011/09/29	05:35:30	64.0083	6309.91	30.67	64.0167	6311.39	30.77
42	2011/09/29	07:35:30	66.0083	6299.45	30.66	66.0167	6300.72	30.76
43	2011/09/29	09:35:30	68.0083	6289.35	30.65	68.0167	6290.61	30.75
44	2011/09/29	11:35:30	70.0083	6279.33	30.64	70.0167	6280.94	30.74
45	2011/09/29	13:35:30	72.0083	6270.17	30.63	72.0167	6271.63	30.74
46	2011/09/29	15:35:30	74.0083	6261.24	30.62	74.0167	6262.77	30.73
47	2011/09/29	17:35:30	76.0083	6252.75	30.62	76.0167	6254.04	30.72
48	2011/09/29	19:35:30	78.0083	6244.49	30.61	78.0167	6245.86	30.71
49	2011/09/29	21:35:30	80.0083	6236.86	30.60	80.0167	6238.40	30.71
50	2011/09/29	23:35:30	82.0083	6229.34	30.59	82.0167	6231.12	30.70
51	2011/09/30	01:35:30	84.0083	6221.88	30.59	84.0167	6223.77	30.69
52	2011/09/30	03:35:30	86.0083	6215.15	30.58	86.0167	6216.76	30.68
53	2011/09/30	05:35:30	88.0083	6208.43	30.57	88.0167	6210.34	30.68
54	2011/09/30	07:35:30	90.0083	6202.15	30.56	90.0167	6203.93	30.67
55	2011/09/30	09:35:30	92.0083	6195.93	30.56	92.0167	6197.44	30.66
56	2011/09/30	11:35:30	94.0083	6189.47	30.55	94.0167	6191.00	30.66
57	2011/09/30	13:35:30	96.0083	6183.51	30.55	96.0167	6185.09	30.65
58	2011/09/30	15:35:30	98.0083	6177.60	30.54	98.0167	6178.90	30.64
59	2011/09/30	17:35:30	100.0083	6171.65	30.53	100.0167	6173.29	30.64
60	2011/09/30	19:35:30	102.0083	6165.95	30.53	102.0167	6167.70	30.63
61	2011/09/30	21:35:30	104.0083	6160.31	30.52	104.0167	6161.99	30.63
62	2011/09/30	23:35:30	106.0083	6155.01	30.52	106.0167	6156.40	30.62
63	2011/10/01	01:35:30	108.0083	6149.74	30.51	108.0167	6151.46	30.62
64	2011/10/01	03:35:30	110.0083	6145.03	30.51	110.0167	6146.79	30.61
65	2011/10/01	05:35:30	112.0083	6140.66	30.50	112.0167	6142.15	30.61
66	2011/10/01	07:35:30	114.0083	6136.10	30.50	114.0167	6137.62	30.60
67	2011/10/01	09:35:30	116.0083	6131.83	30.49	116.0167	6133.23	30.59
68	2011/10/01	11:35:30	118.0083	6127.36	30.49	118.0167	6129.05	30.59
69	2011/10/01	13:35:30	120.0083	6123.26	30.48	120.0167	6124.86	30.59
70	2011/10/01	15:35:30	122.0083	6119.40	30.48	122.0167	6121.05	30.58
71	2011/10/01	17:35:30	124.0083	6115.67	30.47	124.0167	6117.37	30.58
72	2011/10/01	19:35:30	126.0083	6112.02	30.47	126.0167	6113.53	30.57
73	2011/10/01	21:35:30	128.0083	6108.19	30.46	128.0167	6109.83	30.57
74	2011/10/01	23:35:30	130.0083	6105.14	30.46	130.0167	6106.71	30.57
75	2011/10/02	01:35:30	132.0083	6101.17	30.46	132.0167	6102.97	30.56
76	2011/10/02	03:35:30	134.0083	6097.96	30.45	134.0167	6099.56	30.56
77	2011/10/02	05:35:30	136.0083	6094.72	30.45	136.0167	6096.16	30.55
78	2011/10/02	07:35:30	138.0083	6091.52	30.44	138.0167	6093.25	30.55
79	2011/10/02	09:35:30	140.0083	6088.49	30.44	140.0167	6090.06	30.55
80	2011/10/02	11:35:30	142.0083	6085.29	30.44	142.0167	6086.73	30.54

LOWER Serial Number: 40442 Start Date: 2011/09/26 13:35:00 Run Depth: 982.00

UPPER Serial Number: 40432 Start Date: 2011/09/26 13:35:00 Run Depth: 981.70

Print Filter: Print every 2 hour

TUNDRA OIL & GAS PARTNERSHIP

103/13-36-008-29W1/00

Start Test Date: 2011/09/26

Final Test Date: 2011/10/07

TUNDRA DOWNSPACING (9-36) 13-36-8-29

Formation: BAKKEN

RESERVOIR PRESSURE SURVEY

Pool: O.H.: 1010.95 - 2302.00 mKBMD

	LOWER Date yyyy/mm/dd	LOWER Clk Time hh:mm:ss	LOWER Time hr	LOWER Pres. kPa(a)	LOWER Temp. °C	UPPER Time hr	UPPER Pres. kPa(a)	UPPER Temp. °C
81	2011/10/02	13:35:30	144.0083	6082.40	30.43	144.0167	6083.96	30.54
82	2011/10/02	15:35:30	146.0083	6079.11	30.43	146.0167	6080.60	30.53
83	2011/10/02	17:35:30	148.0083	6076.06	30.42	148.0167	6077.76	30.53
84	2011/10/02	19:35:30	150.0083	6073.38	30.42	150.0167	6074.93	30.52
85	2011/10/02	21:35:30	152.0083	6070.69	30.42	152.0167	6072.35	30.52
86	2011/10/02	23:35:30	154.0083	6068.03	30.42	154.0167	6069.85	30.52
87	2011/10/03	01:35:30	156.0083	6065.54	30.41	156.0167	6067.14	30.51
88	2011/10/03	03:35:30	158.0083	6062.89	30.41	158.0167	6064.67	30.51
89	2011/10/03	05:35:30	160.0083	6060.52	30.40	160.0167	6062.34	30.51
90	2011/10/03	07:35:30	162.0083	6058.12	30.40	162.0167	6059.72	30.51
91	2011/10/03	09:35:30	164.0083	6055.85	30.40	164.0167	6057.30	30.50
92	2011/10/03	11:35:30	166.0083	6053.47	30.40	166.0167	6055.19	30.50
93	2011/10/03	13:35:30	168.0083	6051.44	30.39	168.0167	6053.05	30.49
94	2011/10/03	15:35:30	170.0083	6049.33	30.39	170.0167	6050.74	30.49
95	2011/10/03	17:35:30	172.0083	6047.25	30.39	172.0167	6048.65	30.49
96	2011/10/03	19:35:30	174.0083	6045.03	30.38	174.0167	6046.74	30.49
97	2011/10/03	21:35:30	176.0083	6042.92	30.38	176.0167	6044.57	30.49
98	2011/10/03	23:35:30	178.0083	6041.14	30.38	178.0167	6042.72	30.48
99	2011/10/04	01:35:30	180.0083	6039.30	30.38	180.0167	6041.03	30.48
100	2011/10/04	03:35:30	182.0083	6037.47	30.37	182.0167	6038.67	30.48
101	2011/10/04	05:35:30	184.0083	6035.71	30.37	184.0167	6037.09	30.47
102	2011/10/04	07:35:30	186.0083	6033.72	30.37	186.0167	6034.97	30.47
103	2011/10/04	09:35:30	188.0083	6031.72	30.36	188.0167	6033.25	30.47
104	2011/10/04	11:35:30	190.0083	6029.87	30.36	190.0167	6031.55	30.47
105	2011/10/04	13:35:30	192.0083	6028.11	30.36	192.0167	6029.73	30.46
106	2011/10/04	15:35:30	194.0083	6026.57	30.36	194.0167	6028.13	30.46
107	2011/10/04	17:35:30	196.0083	6025.21	30.35	196.0167	6026.54	30.46
108	2011/10/04	19:35:30	198.0083	6023.47	30.35	198.0167	6024.95	30.46
109	2011/10/04	21:35:30	200.0083	6021.91	30.35	200.0167	6023.59	30.46
110	2011/10/04	23:35:30	202.0083	6020.38	30.35	202.0167	6022.09	30.45
111	2011/10/05	01:35:30	204.0083	6018.90	30.35	204.0167	6020.79	30.45
112	2011/10/05	03:35:30	206.0083	6017.72	30.34	206.0167	6019.21	30.45
113	2011/10/05	05:35:30	208.0083	6016.11	30.34	208.0167	6017.76	30.44
114	2011/10/05	07:35:30	210.0083	6014.67	30.34	210.0167	6016.34	30.44
115	2011/10/05	09:35:30	212.0083	6013.49	30.34	212.0167	6014.92	30.44
116	2011/10/05	11:35:30	214.0083	6012.45	30.33	214.0167	6013.88	30.44
117	2011/10/05	13:35:30	216.0083	6011.24	30.33	216.0167	6012.58	30.44
118	2011/10/05	15:35:30	218.0083	6010.07	30.33	218.0167	6011.41	30.44
119	2011/10/05	17:35:30	220.0083	6008.71	30.33	220.0167	6010.28	30.43
120	2011/10/05	19:35:30	222.0083	6007.58	30.33	222.0167	6009.09	30.43

LOWER Serial Number: 40442 Start Date: 2011/09/26 13:35:00 Run Depth: 982.00

UPPER Serial Number: 40432 Start Date: 2011/09/26 13:35:00 Run Depth: 981.70

Print Filter: Print every 2 hour

TUNDRA OIL & GAS PARTNERSHIP

103/13-36-008-29W1/00

Start Test Date: 2011/09/26

Final Test Date: 2011/10/07

TUNDRA DOWNSPACING (9-36) 13-36-8-29

Formation: BAKKEN

RESERVOIR PRESSURE SURVEY

Pool: O.H.: 1010.95 - 2302.00 mKBMD

	LOWER Date yyyy/mm/dd	LOWER Clk Time hh:mm:ss	LOWER Time hr	LOWER Pres. kPa(a)	LOWER Temp. °C	UPPER Time hr	UPPER Pres. kPa(a)	UPPER Temp. °C
121	2011/10/05	21:35:30	224.0083	6006.51	30.32	224.0167	6007.89	30.43
122	2011/10/05	23:35:30	226.0083	6005.34	30.32	226.0167	6006.99	30.43
123	2011/10/06	01:35:30	228.0083	6004.47	30.32	228.0167	6005.93	30.42
124	2011/10/06	03:35:30	230.0083	6003.32	30.32	230.0167	6004.90	30.42
125	2011/10/06	05:35:30	232.0083	6002.40	30.32	232.0167	6003.85	30.42
126	2011/10/06	07:35:30	234.0083	6001.46	30.31	234.0167	6002.88	30.42
127	2011/10/06	09:35:30	236.0083	6000.43	30.31	236.0167	6001.88	30.42
128	2011/10/06	11:35:30	238.0083	5999.48	30.31	238.0167	6000.93	30.42
129	2011/10/06	13:35:30	240.0083	5998.59	30.31	240.0167	5999.70	30.41
130	2011/10/06	15:35:30	242.0083	5997.31	30.31	242.0167	5998.83	30.41
131	2011/10/06	17:35:30	244.0083	5996.36	30.31	244.0167	5997.75	30.41
132	2011/10/06	19:35:30	246.0083	5995.39	30.30	246.0167	5996.86	30.41
133	2011/10/06	21:35:30	248.0083	5994.05	30.30	248.0167	5995.72	30.41
134	2011/10/06	23:35:30	250.0083	5993.24	30.30	250.0167	5994.66	30.41
135	2011/10/07	01:35:30	252.0083	5992.12	30.30	252.0167	5993.87	30.40
136	2011/10/07	03:35:30	254.0083	5991.55	30.30	254.0167	5992.90	30.40
137	2011/10/07	05:35:30	256.0083	5990.45	30.29	256.0250	5991.87	30.40
138	2011/10/07	07:35:30	258.0083	5989.54	30.29	258.0250	5990.75	30.40
139	2011/10/07	09:35:30	260.0083	5988.43	30.30	260.0250	5990.17	30.40
140	2011/10/07	11:35:30	262.0083	5987.69	30.29	262.0250	5989.14	30.39
141	2011/10/07	13:35:30	264.0083	5986.54	30.29	264.0250	5988.32	30.40
142	2011/10/07	14:40:00	265.0833	5986.36	30.29	265.0833	5988.76	30.40
143	2011/10/07	14:40:00	265.0833	FINAL PRESSURE, UNSETTING BRIDGE PLUG				
144	2011/10/07	14:40:30	265.0917	7435.87	30.32	265.0917	6811.97	30.40
145	2011/10/07	14:42:00	265.1167	9650.77	29.02	265.1167	9601.83	29.18
146	2011/10/07	14:42:00	265.1167	BRIDGE PLUG UNSET				
147	2011/10/07	14:42:30	265.1250	9620.09	28.74	265.1250	9625.96	28.94
148	2011/10/07	14:52:00	265.2833	9624.43	29.27	265.2833	9630.88	29.14
149	2011/10/07	14:52:00	265.2833	PULL TOOLS FROM WELL WITH THE TUBING.				
150	2011/10/07	14:52:30	265.2917	9614.55	29.33	265.2917	9644.43	29.20
151	2011/10/07	15:35:30	266.0083	103.36	15.80	266.0250	97.93	15.61
152	2011/10/07	15:44:00	266.1500	95.82	15.54	266.1500	97.91	15.55
153	2011/10/07	15:44:00	266.1500	RECORDERS AT SURFACE.				
154	2011/10/07	15:44:30	266.1583	95.77	15.46	266.1583	97.67	15.51
155	2011/10/07	17:35:30	268.0083	99.69	15.22	268.0250	100.98	15.26
156	2011/10/07	19:35:30	270.0083	94.43	11.58	270.0250	96.90	11.75
157	2011/10/07	21:35:30	272.0083	95.22	8.68	272.0250	97.09	8.67
158	2011/10/07	22:00:00	272.4167	97.56	8.82	272.4167	98.51	8.74

LOWER Serial Number: 40442 Start Date: 2011/09/26 13:35:00 Run Depth: 982.00

UPPER Serial Number: 40432 Start Date: 2011/09/26 13:35:00 Run Depth: 981.70

Print Filter: Print every 2 hour



DATE: September 26 - October 7, 2011	COMPANY: Tundra Oil and Gas Partnership
WELLNAME: Tundra Downspacing (9-36) 13-36-8-29 WPM	ADDRESS: Virden, MB
LOCATION: (9-36) 13-36-8-29 W1	UWI: 103.13-36-008-29W1.00
FIELD: Downspacing	FORMATION: Bakken
CO HQ REP: Josh Porter	PHONE: 204-851-2504
FIELD REP: Scott Murray	PHONE: 306-452-7216
REPORTS TO (NAME & EMAIL ADDRESS): Eric Bjornsson - eric.bjornsson@tundraoilandgas.com Tyler Routledge - tyler.routledge@tundraoilandgas.com Tim Howell - tim.howell@tundraoilandgas.com Craig Lane - craig.lane@tundraoilandgas.com Bill Jenkins - bill.jenkins@tundraoilandgas.com Adam Berke - adam.berke@tundraoilandgas.com Josh Porter - josh.porter@tundraoilandgas.com	

STATUS: oil well (completion)		TEST TYPE: build up
ESTIMATED H2S CONTENT: 0%		ESTIMATED CO2 CONTENT: 0%
PRODUCING THROUGH: tubing		SHUT IN TIME/DATE: 16:00 Sep 26/11
KOP: 726.49 mKB	TVD: ds included	LICENCE #: 8184
PBTD: n/a	TD: 2302 mKB	WELL TYPE: horizontal
CASING SIZE: 177.8 mm	CSG WEIGHT: 34.23 & 29.76	CSG DEPTH: 1010.95 mKB
TUBING SIZE: none	TBG WEIGHT: none	TBG DEPTH: none
Elevations KB: 515.55 m	GRD: 511.35 m	CF: 511.35 m

PRODUCING INTERVAL

TYPE: open hole	SIZE: 159 mm	INTERVAL: 1010.95 - 2302 mKB
-----------------	--------------	------------------------------

RECORDER INFORMATION

TOP S/N: 40432	FILE NAME: 9-36-13-36-8-29W1	RANGE: 20,680 kpa
BOTTOM S/N: 40442	FILE NAME: 9-36-13-36-8-29W1	RANGE: 20,680 kpa
TOP BATTERY S/N: n/a	BOTTOM BATTERY S/N: n/a	
CONNECT TIME: 13:35 mSep 26/11	DISCONNECT TIME: 19:07 Oct 11/11	

SURFACE TEMP: 14 C	LEASE CONDITION: good
WIRELINE OPERATOR: Mike Muir	PHONE: 306-421-7330
WIRELINE ASSISTANT: n/a	
DIRECTIONS: 14 km north of #2 on 168, west into well.	

DWG WELL HEAD PRESSURES:

TUBING (before survey): 0 kpa	CASING (before survey): 0 kpa
TUBING (after survey): 0 kpa	CASING (after survey): 0 kpa

FLUID LEVEL: n/a	RUN DEPTH: 982 mKB
TIME ON BOTTOM: 15:57 Sep 26/11	TIME OFF BOTTOM: 14:52 Oct 7/11

GRADIENT STOPS

DEPTH mKB:	n/a	FROM:	n/a	UNTIL:	n/a
------------	-----	-------	-----	--------	-----

COMMENTS: These recorders were run and pulled below a bridge plug with pipe.

DESCRIPTION OF WORK DONE:

September 26, 2011
 13:35 - the 21 mPa KC-2 recorders were set to logging mode by a pressure trigger while being run into the well by a drilling rig.

15:57 - recorders were at 982 mKB.
16:00 - the bridge plug was set at 980 mKB (recorders at 982 mKB), the plug was released and the drill pipe was pulled and laid down.
October 7, 2011
14:39 - a service rig latched onto, and prepared to unset, the bridge plug.
14:42 - the bridge plug was unset.
14:52 - the tools were pulled from the well with the tubing.
15:44 - the recorders were at surface.
October 11, 2011
19:07 - the recorders were downloaded.