

EWART UNIT NO. 7

WATERFLOOD EOR PROJECT

ANNUAL REPORT FOR 2017

May 4, 2018

Tundra Oil and Gas Partnership

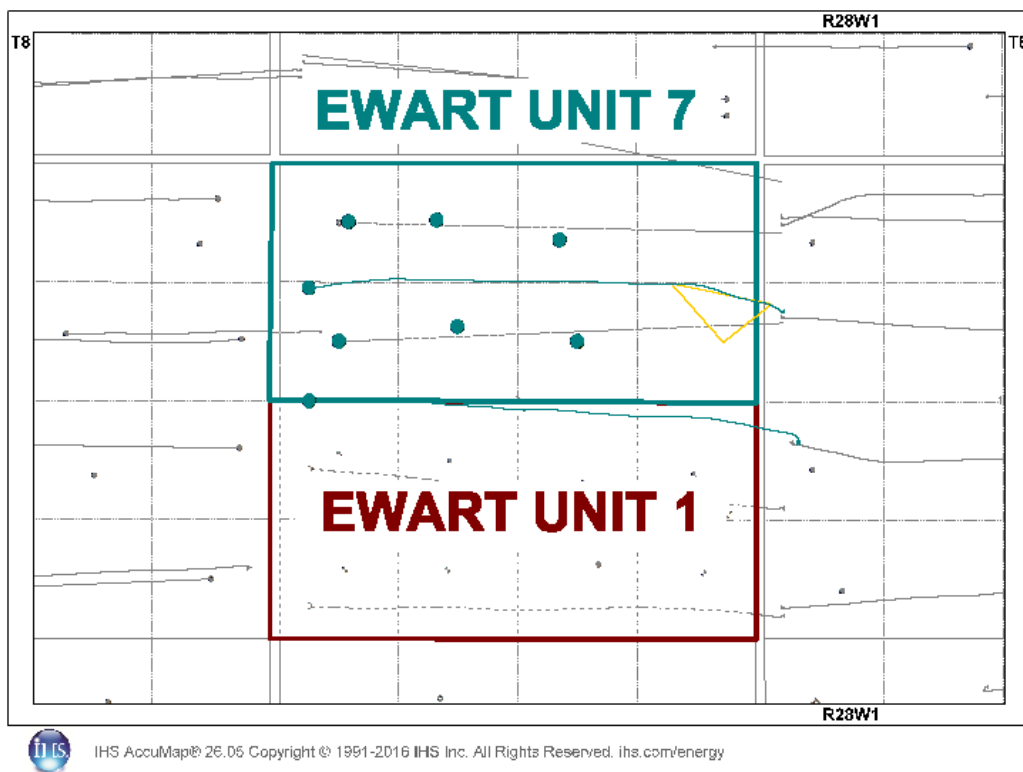
Table of Contents

Introduction	3.
Discussion	3.
Production History	3.
Waterflood Development Plan	5.
Waterflood EOR Operating Strategy and Performance	6.
Water Source and Quality	6.
Injection Wellhead Pressures	6.
Reservoir Pressure	6.
Well Servicing	6.
Waterflood Performance Discussion	6.
List of Appendices	7.
Appendix A: Well Name and Well Status	
Appendix B: Injection Pattern Summary	
Appendix C: Injector Pattern Production/Injection Rates, Cumulative and VRR Plots	

INTRODUCTION

Ewart Unit No. 7 Enhanced Oil Recovery (EOR) Waterflood Project was approved on May 1, 2015 with Tundra Oil and Gas (Tundra) as Operator. The EOR Unit area, outlined in green, contains 6 producing vertical wells and 2 producing horizontal wells in 8 LSDs in Township 8 Range 28 W1 as shown in the figure below. Well list and well status is available in Appendix A.

Figure 1: Ewart Unit No. 7 Area Outline



In accordance with Section 73 of the Manitoba Drilling and Production Regulation, Tundra hereby submits the following 2017 Annual Progress Report for Ewart Unit No. 7.

DISCUSSION

Production History

For the wells included in Ewart Unit No. 7, production started in November 2005 with the 00/12-09-008-28W1 well. Average oil production peaked at 4.91 m³/d per well in

September 2006. This production was coming from 4 wells and totaled 19.65 m³/d for the Unit. In December 2017, the Unit was producing 5.08 m³/d of oil and 4.59 m³/d of water. The water oil ratio (WOR) averaged 0.79 m³/m³ over 2017. There is currently no water injection in Ewart Unit No. 7. The rates and WOR are presented in Figure 2.

Figure 2: Ewart Unit No. 7 Production/Injection Rates and WOR vs Time

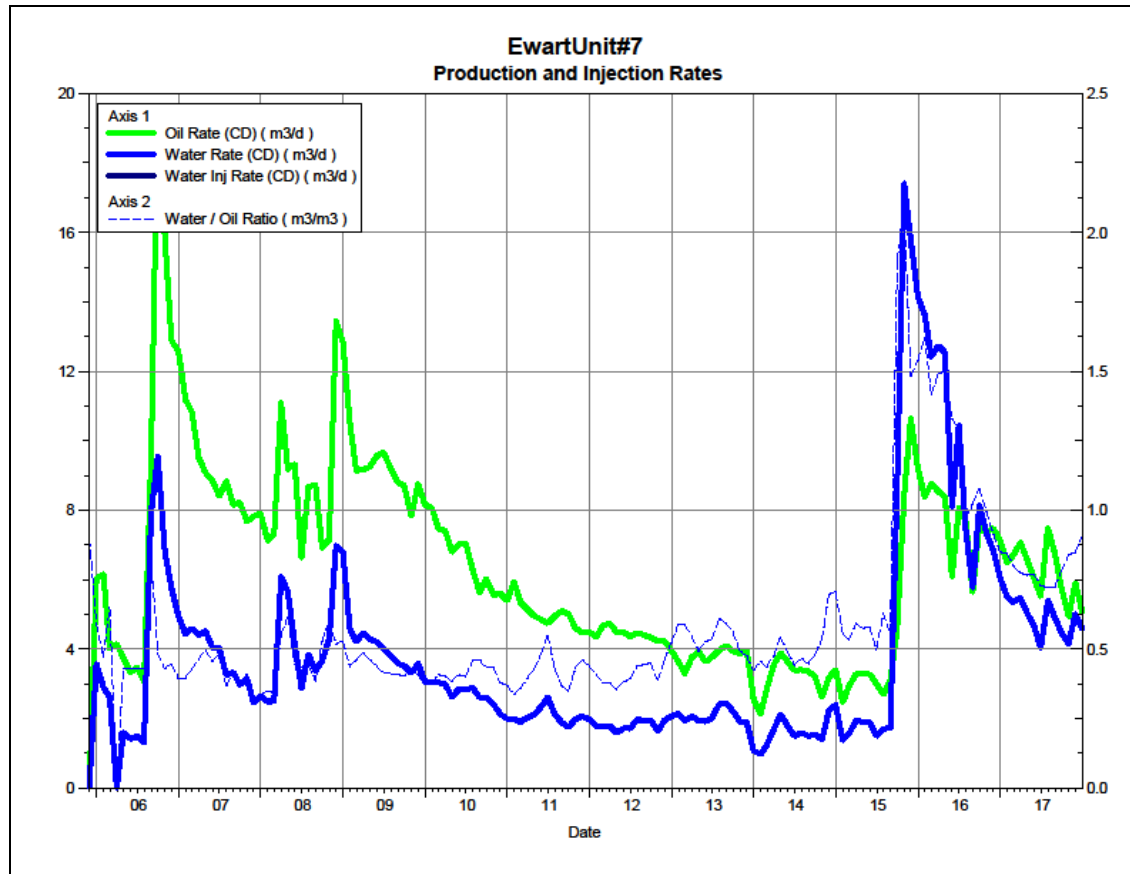
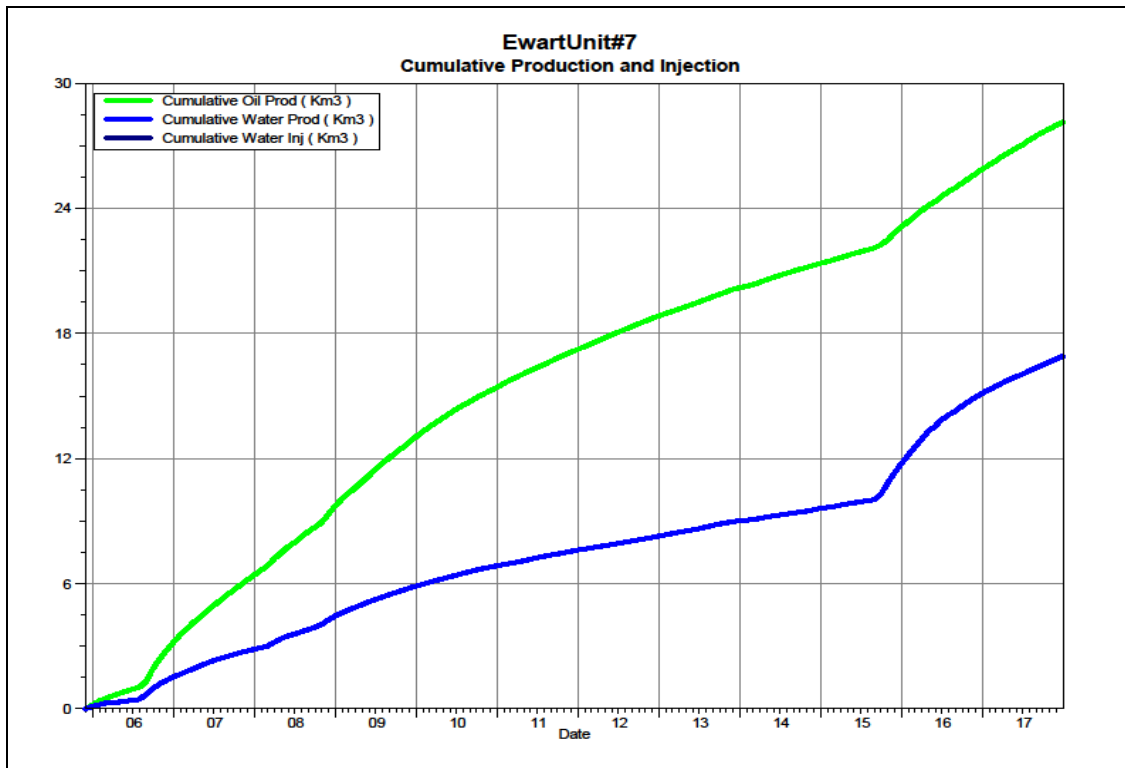


Figure 3 shows the cumulative production for Ewart Unit No. 7 to the end of December 2017 as 28.14 e³m³ of oil, and 16.92 e³m³ of water, representing a 9.9% recovery factor of the OOIP (285.4 e³m³).

Figure 3: Ewart Unit No. 7 Cumulative Oil, Water and Water Injected vs Time



Waterflood Development Plan

Ewart Unit No. 7 Waterflood (WF) Development Plan

Ewart Unit No. 7 is still in the development phase at the end of 2017. There are 2 undrilled LSDs (9 and 16) within the proposed unit boundary for which 2 vertical wells are planned. The two (2) future horizontal injectors, including one (1) inter-unit well, were drilled in 2015 between the existing vertical producing wells, completing waterflood patterns with effective 20 acre spacing. In order to maximize recovery from this unit, Tundra expects to produce the future injectors for a short period of time to clean-up the reservoir near the wellbore. All horizontal wells are fracture stimulated to improve the injection rates.

Production performance by injector pattern is summarized in Appendix B.

Any future revisions to the waterflood development or surveillance plan would be based on new production or performance response data, technical studies, or observed reservoir behavior and reserves recovery interpretations.

Waterflood EOR Operating Strategy and Performance

Water Source and Quality

The injection water for Ewart Unit No. 7 will be sourced from the 02/14-30-007-28W1 well (Mannville formation). The water is treated at the 04-01-008-29W1 filtration plant where it is filtered to 0.1 microns and has scale inhibitor and biocide added. The injection water is then distributed to the injectors through the dedicated infrastructure system.

Injection Wellhead Pressures

There is currently no injection in Ewart Unit No. 7.

Reservoir Pressure

Where practical, Tundra is committed to collecting pressure data from newly drilled openhole injection wells. For Ewart Unit No. 7, no reservoir pressure measurements were taken in 2017.

Well Servicing

Table 1 lists the maintenance that was required in Ewart Unit No. 7 in 2017.

Table 1: Service and Maintenance in Ewart Unit No. 7

100.11-09-008-28W1.00	Broken Polish Rod / Pump Change	2/28/2017
103.12-09-008-28W1.00	Broken Rod / Pump Change	6/16/2017

Waterflood Performance Discussion

At the end of 2017, there is currently no water injection in Ewart Unit No. 7, therefore, there is no waterflood analysis that can be done at this time. The waterflood area had 2 proposed horizontal injection wells drilled in 2015, completing waterflood patterns with effective 20 acre spacing. Water injection is anticipated to begin in 2018, after the expected conversion of the 03/12-09-008-28W1 producer to an injection well.

Plots of the production and injection data along with the VRR information is presented in Appendix C for each of the injection patterns.

List of Appendices

Appendix A: Well Name and Well Status

Appendix B: Injection Pattern Summary

Appendix C: Injector Pattern Production/Injection Rates, Cumulative and VRR Plots for the following injectors:

03/05-09-008-28W1 (Inter-unit Injector)

03/12-09-008-28W1

APPENDIX A

<i>UWI</i>	<i>Surface Hole Location</i>	<i>License Number</i>	<i>Type</i>	<i>Status</i>
103/05-09-008-28W1/0	104/05-10-008-28W1/0	010357	Horizontal	Capable of OIL Prod
100/10-09-008-28W1/0		006559	Vertical	Capable of OIL Prod
100/11-09-008-28W1/0		005984	Vertical	Capable of OIL Prod
100/12-09-008-28W1/0		005678	Vertical	Capable of OIL Prod
103/12-09-008-28W1/0	103/12-10-008-28W1/0	010356	Horizontal	Capable of OIL Prod
100/13-09-008-28W1/0		005985	Vertical	Capable of OIL Prod
100/14-09-008-28W1/0		005986	Vertical	Capable of OIL Prod
100/15-09-008-28W1/0		006560	Vertical	Capable of OIL Prod

Appendix B

Ewart Unit No. 7 Injection Pattern Summary as of December 2017

Pattern Name	Injector BH Location (008-28W1)	Injector Surf. Location (008-28W1)	Status	No. of Supported Wells	Supported Wells (008-28W1)	Allocation Factor	Pattern Prod Start Month	Inj Start Month	Oil Rate (m ³ /d)	Water Rate (m ³ /d)	WOR (m ³ /m ³)	Water Injection (m ³ /d)	Cum Oil (E ³ m ³)	Cum Water (E ³ m ³)	Cum Inj Water (E ³ m ³)	Monthly VRR	Cum VRR
03/05-09-008-28Inj (Inter-Unit Injector)	03/05-09	04/05-10	Capable of Oil Prod	7	05-09, 06-09, 07-09, 08-09 10-09, 11-09, 12-09	0.5	Nov 2005	-	3.6	4.8	1.32	-	15.8	14.9	0.0	0.000	0.000
03/12-09-008-28Inj	03/12-09	03/12-10	Capable of Oil Prod	6	10-09, 11-09, 12-09, 13-09, 14-09, 15-09	0.5	Nov 2005	-	3.2	2.6	0.83	-	14.5	9.3	0.0	0.000	0.000

Appendix C

Rates and VRR Plots

Pattern: 03/05-09-008-28Inj Set: EwartUnit#7

Oil Formation Vol Factor : 1.07100 m3/m3

Water Formation Vol Factor : 1.00150 m3/m3

Water / Oil Ratio : 1.22 m3/m3

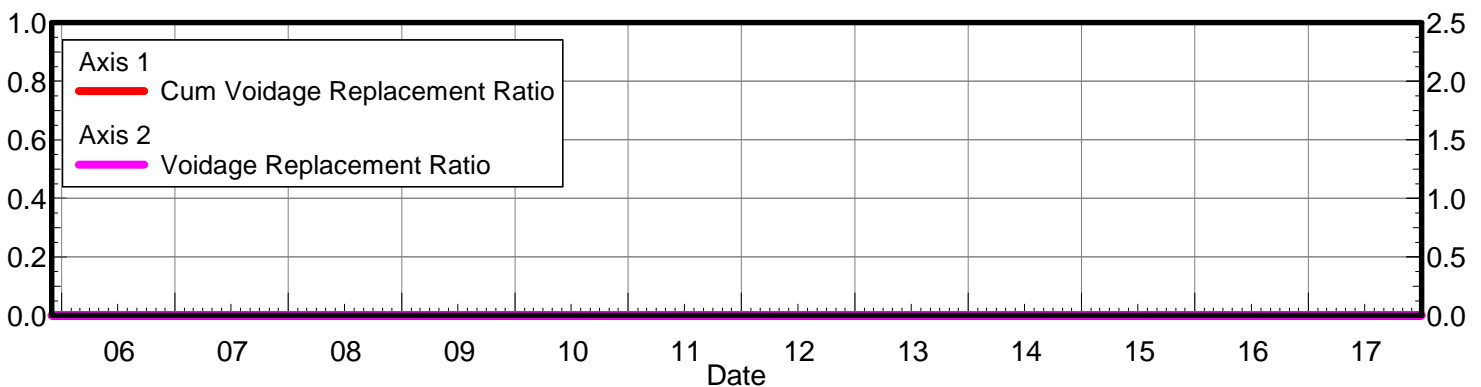
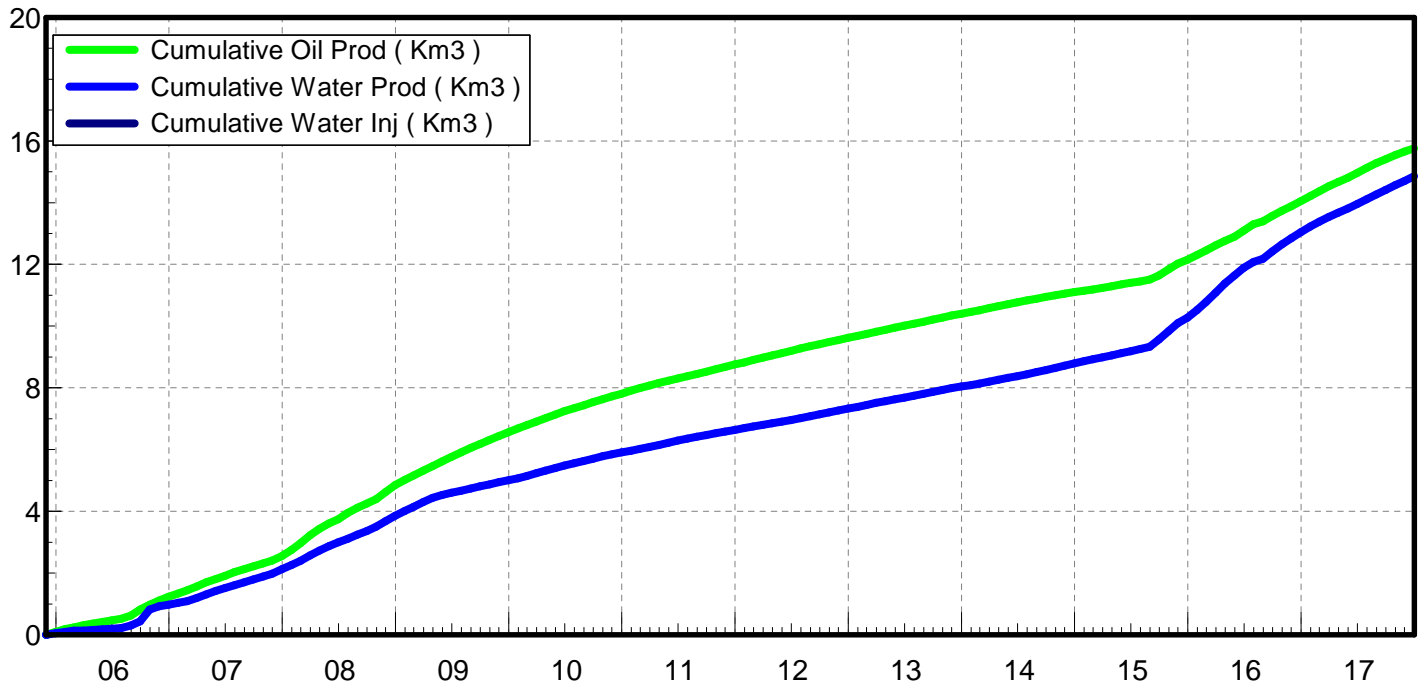
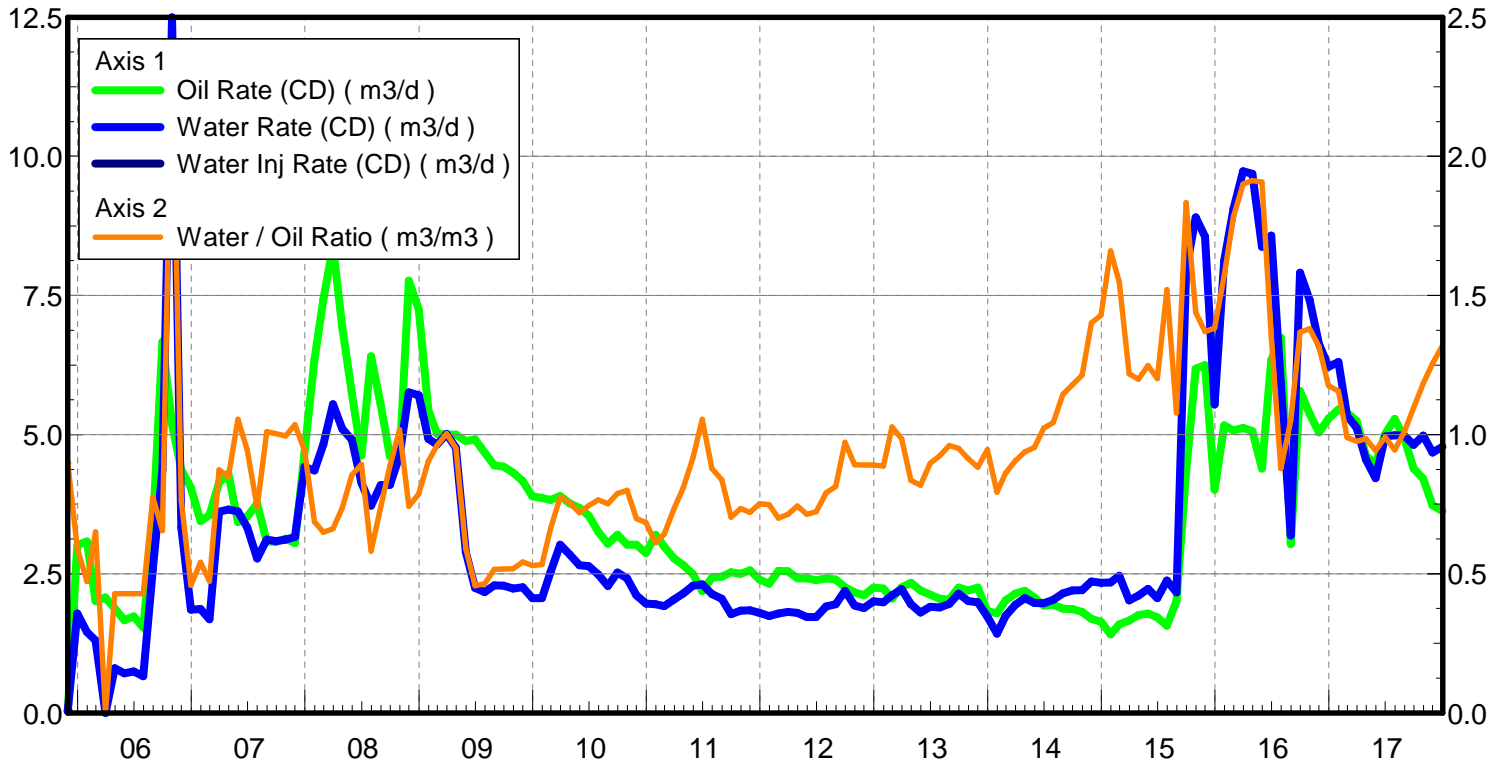
March 06, 2018

Operator: TUNDRA_OIL_AND_GAS_PARTNER

Oil Rate (CD) : 3.62 m3/d

Water Rate (CD) : 4.78 m3/d

Water Inj Rate (CD) : * m3/d



Date	Oil Rate (CD) m3/d	Water Rate (CD) m3/d	Water Oil Ratio m3/m3	Water Inj Rate (CD) m3/d	Cum Oil Prod Km3	Cum Water Prod Km3	Cum Water Inj Km3	VRR	Cum VRR
11/30/2005	0.03	0.03	0.90		0.00	0.00	0.00	0.000	0.000
12/31/2005	3.02	1.79	0.59		0.09	0.06	0.00	0.000	0.000
1/31/2006	3.08	1.45	0.47		0.19	0.10	0.00	0.000	0.000
2/28/2006	2.01	1.31	0.65		0.25	0.14	0.00	0.000	0.000
3/31/2006	2.08	0.00	0.00		0.31	0.14	0.00	0.000	0.000
4/30/2006	1.88	0.80	0.43		0.37	0.16	0.00	0.000	0.000
5/31/2006	1.66	0.71	0.43		0.42	0.18	0.00	0.000	0.000
6/30/2006	1.74	0.75	0.43		0.47	0.21	0.00	0.000	0.000
7/31/2006	1.54	0.66	0.43		0.52	0.23	0.00	0.000	0.000
8/31/2006	3.33	2.58	0.78		0.62	0.31	0.00	0.000	0.000
9/30/2006	6.67	4.37	0.66		0.82	0.44	0.00	0.000	0.000
10/31/2006	5.19	12.50	2.41		0.98	0.83	0.00	0.000	0.000
11/30/2006	4.37	3.33	0.76		1.11	0.93	0.00	0.000	0.000
12/31/2006	4.05	1.86	0.46		1.24	0.98	0.00	0.000	0.000
1/31/2007	3.45	1.87	0.54		1.35	1.04	0.00	0.000	0.000
2/28/2007	3.55	1.68	0.47		1.45	1.09	0.00	0.000	0.000
3/31/2007	4.14	3.61	0.87		1.57	1.20	0.00	0.000	0.000
4/30/2007	4.30	3.65	0.85		1.70	1.31	0.00	0.000	0.000
5/31/2007	3.43	3.62	1.06		1.81	1.42	0.00	0.000	0.000
6/30/2007	3.53	3.33	0.94		1.91	1.52	0.00	0.000	0.000
7/31/2007	3.76	2.78	0.74		2.03	1.61	0.00	0.000	0.000
8/31/2007	3.08	3.11	1.01		2.13	1.70	0.00	0.000	0.000
9/30/2007	3.08	3.09	1.00		2.22	1.80	0.00	0.000	0.000
10/31/2007	3.13	3.11	0.99		2.32	1.89	0.00	0.000	0.000
11/30/2007	3.05	3.16	1.04		2.41	1.99	0.00	0.000	0.000
12/31/2007	4.68	4.42	0.94		2.55	2.13	0.00	0.000	0.000
1/31/2008	6.35	4.36	0.69		2.75	2.26	0.00	0.000	0.000
2/29/2008	7.43	4.83	0.65		2.96	2.40	0.00	0.000	0.000
3/31/2008	8.39	5.55	0.66		3.22	2.57	0.00	0.000	0.000
4/30/2008	6.93	5.10	0.74		3.43	2.73	0.00	0.000	0.000
5/31/2008	5.74	4.91	0.85		3.61	2.88	0.00	0.000	0.000
6/30/2008	4.63	4.13	0.89		3.75	3.00	0.00	0.000	0.000
7/31/2008	6.41	3.72	0.58		3.95	3.12	0.00	0.000	0.000
8/31/2008	5.54	4.09	0.74		4.12	3.24	0.00	0.000	0.000
9/30/2008	4.61	4.09	0.89		4.26	3.37	0.00	0.000	0.000
10/31/2008	4.54	4.62	1.02		4.40	3.51	0.00	0.000	0.000
11/30/2008	7.76	5.76	0.74		4.63	3.68	0.00	0.000	0.000
12/31/2008	7.25	5.70	0.79		4.86	3.86	0.00	0.000	0.000
1/31/2009	5.44	4.92	0.90		5.02	4.01	0.00	0.000	0.000
2/28/2009	5.02	4.82	0.96		5.17	4.15	0.00	0.000	0.000
3/31/2009	5.00	5.01	1.00		5.32	4.30	0.00	0.000	0.000
4/30/2009	5.00	4.76	0.95		5.47	4.45	0.00	0.000	0.000
5/31/2009	4.89	2.89	0.59		5.62	4.53	0.00	0.000	0.000
6/30/2009	4.91	2.25	0.46		5.77	4.60	0.00	0.000	0.000
7/31/2009	4.68	2.17	0.46		5.91	4.67	0.00	0.000	0.000

Date	Oil Rate (CD) m3/d	Water Rate (CD) m3/d	Water Oil Ratio m3/m3	Water Inj Rate (CD) m3/d	Cum Oil Prod Km3	Cum Water Prod Km3	Cum Water Inj Km3	VRR	Cum VRR
8/31/2009	4.45	2.29	0.52		6.05	4.74	0.00	0.000	0.000
9/30/2009	4.42	2.29	0.52		6.18	4.81	0.00	0.000	0.000
10/31/2009	4.32	2.24	0.52		6.32	4.88	0.00	0.000	0.000
11/30/2009	4.16	2.26	0.54		6.44	4.95	0.00	0.000	0.000
12/31/2009	3.89	2.06	0.53		6.56	5.01	0.00	0.000	0.000
1/31/2010	3.86	2.06	0.53		6.68	5.07	0.00	0.000	0.000
2/28/2010	3.83	2.53	0.66		6.79	5.14	0.00	0.000	0.000
3/31/2010	3.90	3.02	0.78		6.91	5.24	0.00	0.000	0.000
4/30/2010	3.76	2.84	0.76		7.02	5.32	0.00	0.000	0.000
5/31/2010	3.69	2.65	0.72		7.14	5.41	0.00	0.000	0.000
6/30/2010	3.54	2.64	0.74		7.25	5.48	0.00	0.000	0.000
7/31/2010	3.25	2.49	0.76		7.35	5.56	0.00	0.000	0.000
8/31/2010	3.04	2.28	0.75		7.44	5.63	0.00	0.000	0.000
9/30/2010	3.20	2.52	0.79		7.54	5.71	0.00	0.000	0.000
10/31/2010	3.02	2.42	0.80		7.63	5.78	0.00	0.000	0.000
11/30/2010	3.02	2.11	0.70		7.72	5.85	0.00	0.000	0.000
12/31/2010	2.87	1.96	0.68		7.81	5.91	0.00	0.000	0.000
1/31/2011	3.20	1.95	0.61		7.91	5.97	0.00	0.000	0.000
2/28/2011	2.99	1.92	0.64		7.99	6.02	0.00	0.000	0.000
3/31/2011	2.77	2.04	0.73		8.08	6.09	0.00	0.000	0.000
4/30/2011	2.65	2.15	0.81		8.16	6.15	0.00	0.000	0.000
5/31/2011	2.50	2.29	0.92		8.24	6.22	0.00	0.000	0.000
6/30/2011	2.19	2.31	1.06		8.30	6.29	0.00	0.000	0.000
7/31/2011	2.43	2.14	0.88		8.38	6.36	0.00	0.000	0.000
8/31/2011	2.45	2.05	0.84		8.45	6.42	0.00	0.000	0.000
9/30/2011	2.52	1.77	0.70		8.53	6.47	0.00	0.000	0.000
10/31/2011	2.50	1.84	0.73		8.61	6.53	0.00	0.000	0.000
11/30/2011	2.56	1.84	0.72		8.68	6.59	0.00	0.000	0.000
12/31/2011	2.40	1.80	0.75		8.76	6.64	0.00	0.000	0.000
1/31/2012	2.32	1.74	0.75		8.83	6.69	0.00	0.000	0.000
2/29/2012	2.55	1.78	0.70		8.90	6.75	0.00	0.000	0.000
3/31/2012	2.55	1.82	0.71		8.98	6.80	0.00	0.000	0.000
4/30/2012	2.42	1.80	0.74		9.05	6.86	0.00	0.000	0.000
5/31/2012	2.42	1.72	0.71		9.13	6.91	0.00	0.000	0.000
6/30/2012	2.38	1.72	0.72		9.20	6.96	0.00	0.000	0.000
7/31/2012	2.42	1.91	0.79		9.28	7.02	0.00	0.000	0.000
8/31/2012	2.40	1.95	0.81		9.35	7.08	0.00	0.000	0.000
9/30/2012	2.26	2.20	0.97		9.42	7.15	0.00	0.000	0.000
10/31/2012	2.17	1.93	0.89		9.48	7.21	0.00	0.000	0.000
11/30/2012	2.11	1.88	0.89		9.55	7.26	0.00	0.000	0.000
12/31/2012	2.25	2.01	0.89		9.62	7.33	0.00	0.000	0.000
1/31/2013	2.24	1.99	0.89		9.69	7.39	0.00	0.000	0.000
2/28/2013	2.06	2.11	1.03		9.74	7.45	0.00	0.000	0.000
3/31/2013	2.25	2.22	0.98		9.81	7.52	0.00	0.000	0.000
4/30/2013	2.34	1.95	0.84		9.88	7.57	0.00	0.000	0.000

Date	Oil Rate (CD) m3/d	Water Rate (CD) m3/d	Water Oil Ratio m3/m3	Water Inj Rate (CD) m3/d	Cum Oil Prod Km3	Cum Water Prod Km3	Cum Water Inj Km3	VRR	Cum VRR
5/31/2013	2.20	1.80	0.82		9.95	7.63	0.00	0.000	0.000
6/30/2013	2.13	1.91	0.90		10.02	7.69	0.00	0.000	0.000
7/31/2013	2.05	1.90	0.92		10.08	7.75	0.00	0.000	0.000
8/31/2013	2.04	1.96	0.96		10.14	7.81	0.00	0.000	0.000
9/30/2013	2.25	2.14	0.95		10.21	7.87	0.00	0.000	0.000
10/31/2013	2.20	2.01	0.91		10.28	7.93	0.00	0.000	0.000
11/30/2013	2.25	1.99	0.88		10.35	7.99	0.00	0.000	0.000
12/31/2013	1.83	1.73	0.95		10.40	8.05	0.00	0.000	0.000
1/31/2014	1.79	1.42	0.79		10.46	8.09	0.00	0.000	0.000
2/28/2014	2.02	1.74	0.86		10.52	8.14	0.00	0.000	0.000
3/31/2014	2.14	1.94	0.91		10.58	8.20	0.00	0.000	0.000
4/30/2014	2.20	2.06	0.94		10.65	8.26	0.00	0.000	0.000
5/31/2014	2.07	1.98	0.95		10.71	8.32	0.00	0.000	0.000
6/30/2014	1.93	1.97	1.02		10.77	8.38	0.00	0.000	0.000
7/31/2014	1.95	2.03	1.04		10.83	8.44	0.00	0.000	0.000
8/31/2014	1.87	2.15	1.14		10.89	8.51	0.00	0.000	0.000
9/30/2014	1.87	2.20	1.18		10.94	8.58	0.00	0.000	0.000
10/31/2014	1.81	2.20	1.21		11.00	8.65	0.00	0.000	0.000
11/30/2014	1.69	2.36	1.40		11.05	8.72	0.00	0.000	0.000
12/31/2014	1.64	2.34	1.43		11.10	8.79	0.00	0.000	0.000
1/31/2015	1.41	2.34	1.66		11.15	8.86	0.00	0.000	0.000
2/28/2015	1.59	2.47	1.55		11.19	8.93	0.00	0.000	0.000
3/31/2015	1.66	2.02	1.22		11.24	8.99	0.00	0.000	0.000
4/30/2015	1.76	2.11	1.20		11.29	9.06	0.00	0.000	0.000
5/31/2015	1.79	2.23	1.25		11.35	9.13	0.00	0.000	0.000
6/30/2015	1.72	2.06	1.20		11.40	9.19	0.00	0.000	0.000
7/31/2015	1.56	2.38	1.52		11.45	9.26	0.00	0.000	0.000
8/31/2015	2.01	2.17	1.08		11.51	9.33	0.00	0.000	0.000
9/30/2015	4.34	7.96	1.83		11.64	9.57	0.00	0.000	0.000
10/31/2015	6.19	8.90	1.44		11.83	9.84	0.00	0.000	0.000
11/30/2015	6.25	8.56	1.37		12.02	10.10	0.00	0.000	0.000
12/31/2015	4.01	5.54	1.38		12.15	10.27	0.00	0.000	0.000
1/31/2016	5.17	8.13	1.57		12.31	10.52	0.00	0.000	0.000
2/29/2016	5.08	9.05	1.78		12.45	10.79	0.00	0.000	0.000
3/31/2016	5.12	9.73	1.90		12.61	11.09	0.00	0.000	0.000
4/30/2016	5.07	9.69	1.91		12.76	11.38	0.00	0.000	0.000
5/31/2016	4.39	8.37	1.91		12.90	11.64	0.00	0.000	0.000
6/30/2016	6.34	8.57	1.35		13.09	11.90	0.00	0.000	0.000
7/31/2016	6.74	5.92	0.88		13.30	12.08	0.00	0.000	0.000
8/31/2016	3.03	3.19	1.05		13.39	12.18	0.00	0.000	0.000
9/30/2016	5.78	7.91	1.37		13.57	12.41	0.00	0.000	0.000
10/31/2016	5.37	7.42	1.38		13.73	12.64	0.00	0.000	0.000
11/30/2016	5.04	6.63	1.32		13.88	12.84	0.00	0.000	0.000
12/31/2016	5.29	6.22	1.18		14.05	13.04	0.00	0.000	0.000
1/31/2017	5.45	6.30	1.16		14.22	13.23	0.00	0.000	0.000

Date	Oil Rate (CD) m3/d	Water Rate (CD) m3/d	Water Oil Ratio m3/m3	Water Inj Rate (CD) m3/d	Cum Oil Prod Km3	Cum Water Prod Km3	Cum Water Inj Km3	VRR	Cum VRR
2/28/2017	5.39	5.34	0.99		14.37	13.38	0.00	0.000	0.000
3/31/2017	5.25	5.12	0.98		14.53	13.54	0.00	0.000	0.000
4/30/2017	4.62	4.55	0.99		14.67	13.68	0.00	0.000	0.000
5/31/2017	4.47	4.22	0.94		14.81	13.81	0.00	0.000	0.000
6/30/2017	5.01	4.96	0.99		14.96	13.96	0.00	0.000	0.000
7/31/2017	5.28	4.99	0.94		15.12	14.11	0.00	0.000	0.000
8/31/2017	4.93	4.98	1.01		15.28	14.27	0.00	0.000	0.000
9/30/2017	4.39	4.81	1.10		15.41	14.41	0.00	0.000	0.000
10/31/2017	4.21	4.98	1.18		15.54	14.56	0.00	0.000	0.000
11/30/2017	3.73	4.68	1.26		15.65	14.70	0.00	0.000	0.000
12/31/2017	3.62	4.78	1.32		15.76	14.85	0.00	0.000	0.000

Pattern: 03/12-09-008-28Inj Set: EwartUnit#7

Oil Formation Vol Factor : 1.07100 m3/m3

Water Formation Vol Factor : 1.00150 m3/m3

Water / Oil Ratio : 1.00 m3/m3

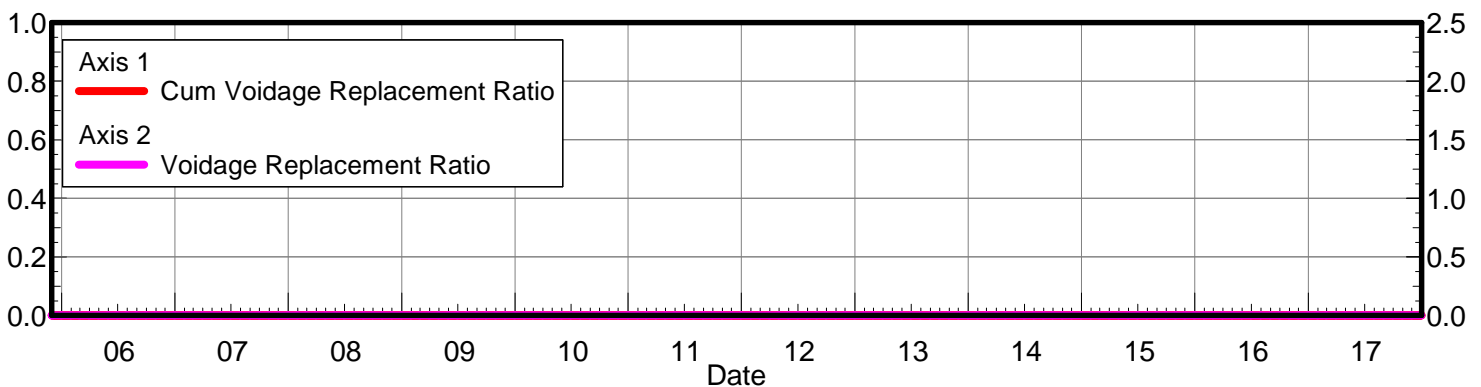
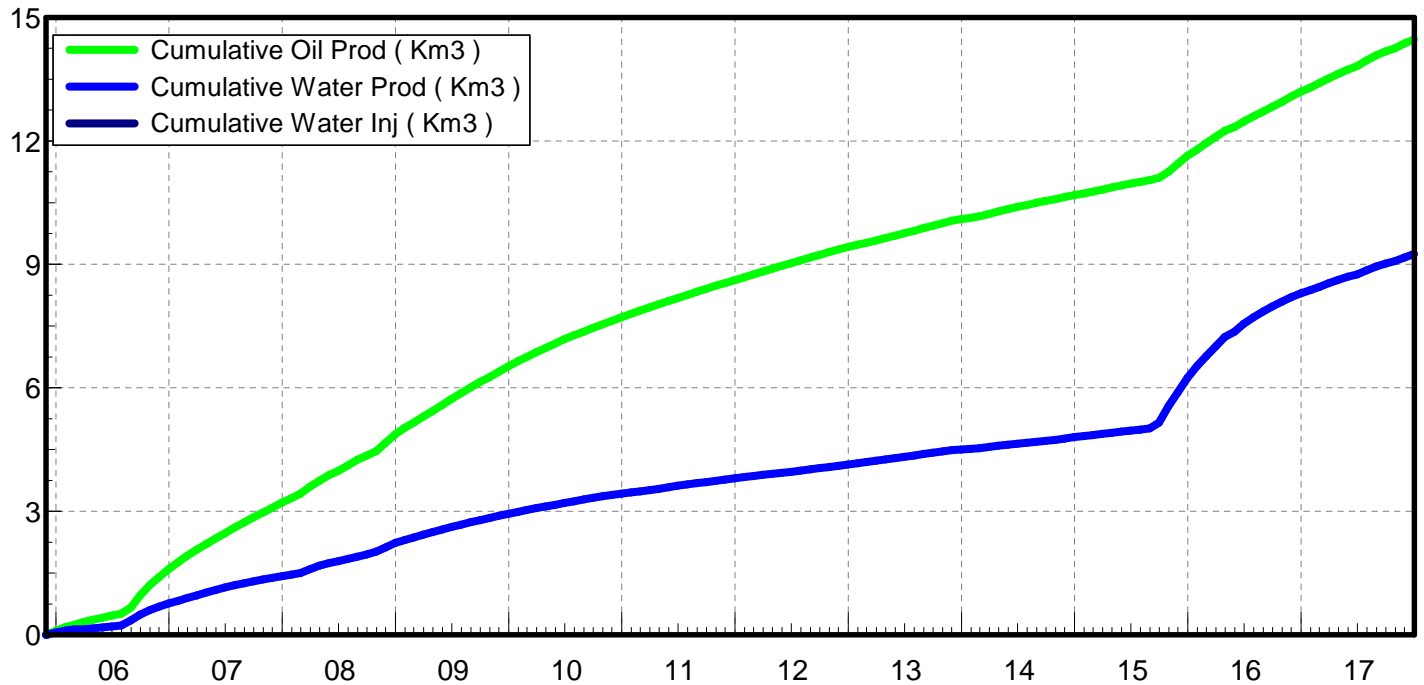
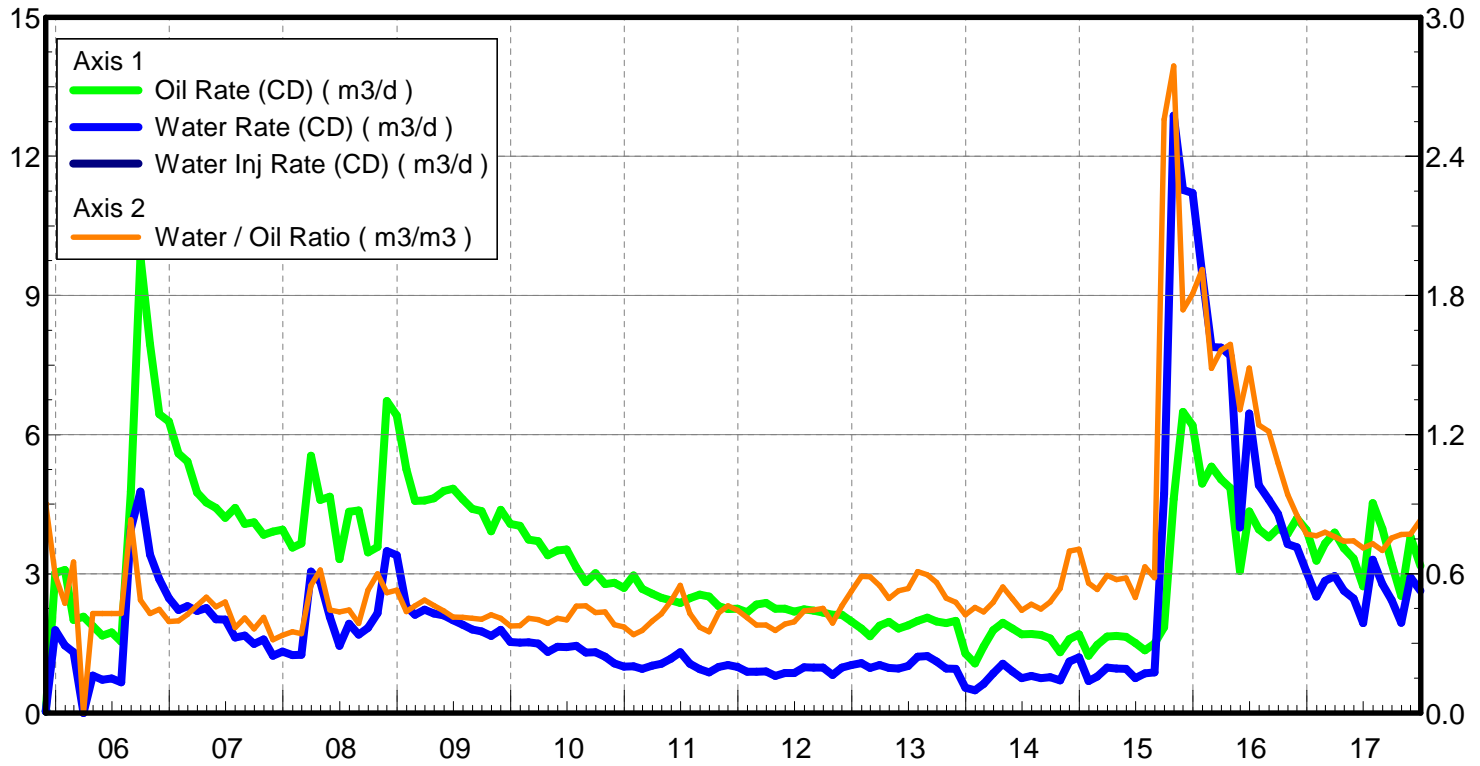
March 06, 2018

Operator: TUNDRA_OIL_AND_GAS_PARTNER

Oil Rate (CD) : 3.17 m3/d

Water Rate (CD) : 2.63 m3/d

Water Inj Rate (CD) : * m3/d



Date	Oil Rate (CD) m3/d	Water Rate (CD) m3/d	Water Oil Ratio m3/m3	Water Inj Rate (CD) m3/d	Cum Oil Prod Km3	Cum Water Prod Km3	Cum Water Inj Km3	VRR	Cum VRR
11/30/2005	0.03	0.03	0.90		0.00	0.00	0.00	0.000	0.000
12/31/2005	3.02	1.79	0.59		0.09	0.06	0.00	0.000	0.000
1/31/2006	3.08	1.45	0.47		0.19	0.10	0.00	0.000	0.000
2/28/2006	2.01	1.31	0.65		0.25	0.14	0.00	0.000	0.000
3/31/2006	2.08	0.00	0.00		0.31	0.14	0.00	0.000	0.000
4/30/2006	1.88	0.80	0.43		0.37	0.16	0.00	0.000	0.000
5/31/2006	1.66	0.71	0.43		0.42	0.18	0.00	0.000	0.000
6/30/2006	1.74	0.75	0.43		0.47	0.21	0.00	0.000	0.000
7/31/2006	1.54	0.66	0.43		0.52	0.23	0.00	0.000	0.000
8/31/2006	4.76	3.96	0.83		0.67	0.35	0.00	0.000	0.000
9/30/2006	9.83	4.78	0.49		0.96	0.49	0.00	0.000	0.000
10/31/2006	7.95	3.41	0.43		1.21	0.60	0.00	0.000	0.000
11/30/2006	6.44	2.88	0.45		1.40	0.69	0.00	0.000	0.000
12/31/2006	6.28	2.48	0.39		1.59	0.76	0.00	0.000	0.000
1/31/2007	5.59	2.22	0.40		1.77	0.83	0.00	0.000	0.000
2/28/2007	5.42	2.30	0.42		1.92	0.90	0.00	0.000	0.000
3/31/2007	4.75	2.20	0.46		2.07	0.96	0.00	0.000	0.000
4/30/2007	4.54	2.26	0.50		2.20	1.03	0.00	0.000	0.000
5/31/2007	4.42	2.02	0.46		2.34	1.09	0.00	0.000	0.000
6/30/2007	4.21	2.01	0.48		2.47	1.15	0.00	0.000	0.000
7/31/2007	4.42	1.63	0.37		2.60	1.20	0.00	0.000	0.000
8/31/2007	4.07	1.67	0.41		2.73	1.26	0.00	0.000	0.000
9/30/2007	4.11	1.49	0.36		2.85	1.30	0.00	0.000	0.000
10/31/2007	3.84	1.58	0.41		2.97	1.35	0.00	0.000	0.000
11/30/2007	3.91	1.23	0.32		3.09	1.39	0.00	0.000	0.000
12/31/2007	3.95	1.32	0.33		3.21	1.43	0.00	0.000	0.000
1/31/2008	3.56	1.25	0.35		3.32	1.47	0.00	0.000	0.000
2/29/2008	3.65	1.25	0.34		3.43	1.50	0.00	0.000	0.000
3/31/2008	5.55	3.05	0.55		3.60	1.60	0.00	0.000	0.000
4/30/2008	4.59	2.83	0.62		3.74	1.68	0.00	0.000	0.000
5/31/2008	4.66	2.07	0.44		3.88	1.75	0.00	0.000	0.000
6/30/2008	3.32	1.45	0.44		3.98	1.79	0.00	0.000	0.000
7/31/2008	4.34	1.92	0.44		4.12	1.85	0.00	0.000	0.000
8/31/2008	4.37	1.69	0.39		4.25	1.90	0.00	0.000	0.000
9/30/2008	3.46	1.83	0.53		4.36	1.96	0.00	0.000	0.000
10/31/2008	3.58	2.15	0.60		4.47	2.02	0.00	0.000	0.000
11/30/2008	6.72	3.49	0.52		4.67	2.13	0.00	0.000	0.000
12/31/2008	6.42	3.40	0.53		4.87	2.23	0.00	0.000	0.000
1/31/2009	5.26	2.30	0.44		5.03	2.30	0.00	0.000	0.000
2/28/2009	4.57	2.11	0.46		5.16	2.36	0.00	0.000	0.000
3/31/2009	4.58	2.23	0.49		5.30	2.43	0.00	0.000	0.000
4/30/2009	4.63	2.14	0.46		5.44	2.50	0.00	0.000	0.000
5/31/2009	4.79	2.10	0.44		5.59	2.56	0.00	0.000	0.000
6/30/2009	4.83	2.00	0.41		5.73	2.62	0.00	0.000	0.000
7/31/2009	4.61	1.90	0.41		5.88	2.68	0.00	0.000	0.000

Date	Oil Rate (CD) m3/d	Water Rate (CD) m3/d	Water Oil Ratio m3/m3	Water Inj Rate (CD) m3/d	Cum Oil Prod Km3	Cum Water Prod Km3	Cum Water Inj Km3	VRR	Cum VRR
8/31/2009	4.40	1.80	0.41		6.01	2.74	0.00	0.000	0.000
9/30/2009	4.35	1.76	0.40		6.14	2.79	0.00	0.000	0.000
10/31/2009	3.92	1.66	0.42		6.26	2.84	0.00	0.000	0.000
11/30/2009	4.38	1.79	0.41		6.39	2.89	0.00	0.000	0.000
12/31/2009	4.08	1.53	0.38		6.52	2.94	0.00	0.000	0.000
1/31/2010	4.03	1.52	0.38		6.65	2.99	0.00	0.000	0.000
2/28/2010	3.74	1.52	0.41		6.75	3.03	0.00	0.000	0.000
3/31/2010	3.70	1.49	0.40		6.87	3.08	0.00	0.000	0.000
4/30/2010	3.40	1.31	0.39		6.97	3.12	0.00	0.000	0.000
5/31/2010	3.50	1.43	0.41		7.08	3.16	0.00	0.000	0.000
6/30/2010	3.52	1.42	0.40		7.18	3.20	0.00	0.000	0.000
7/31/2010	3.14	1.44	0.46		7.28	3.25	0.00	0.000	0.000
8/31/2010	2.82	1.30	0.46		7.37	3.29	0.00	0.000	0.000
9/30/2010	3.01	1.30	0.43		7.46	3.33	0.00	0.000	0.000
10/31/2010	2.78	1.21	0.43		7.54	3.37	0.00	0.000	0.000
11/30/2010	2.81	1.07	0.38		7.63	3.40	0.00	0.000	0.000
12/31/2010	2.70	1.00	0.37		7.71	3.43	0.00	0.000	0.000
1/31/2011	2.97	1.00	0.34		7.80	3.46	0.00	0.000	0.000
2/28/2011	2.67	0.95	0.36		7.88	3.49	0.00	0.000	0.000
3/31/2011	2.57	1.02	0.40		7.96	3.52	0.00	0.000	0.000
4/30/2011	2.48	1.06	0.43		8.03	3.55	0.00	0.000	0.000
5/31/2011	2.43	1.17	0.48		8.11	3.59	0.00	0.000	0.000
6/30/2011	2.37	1.30	0.55		8.18	3.62	0.00	0.000	0.000
7/31/2011	2.48	1.06	0.43		8.25	3.66	0.00	0.000	0.000
8/31/2011	2.55	0.94	0.37		8.33	3.69	0.00	0.000	0.000
9/30/2011	2.51	0.88	0.35		8.41	3.71	0.00	0.000	0.000
10/31/2011	2.30	0.99	0.43		8.48	3.74	0.00	0.000	0.000
11/30/2011	2.24	1.03	0.46		8.55	3.77	0.00	0.000	0.000
12/31/2011	2.25	0.99	0.44		8.62	3.81	0.00	0.000	0.000
1/31/2012	2.17	0.89	0.41		8.68	3.83	0.00	0.000	0.000
2/29/2012	2.34	0.89	0.38		8.75	3.86	0.00	0.000	0.000
3/31/2012	2.37	0.90	0.38		8.83	3.89	0.00	0.000	0.000
4/30/2012	2.25	0.80	0.35		8.89	3.91	0.00	0.000	0.000
5/31/2012	2.25	0.86	0.38		8.96	3.94	0.00	0.000	0.000
6/30/2012	2.18	0.86	0.39		9.03	3.96	0.00	0.000	0.000
7/31/2012	2.24	0.98	0.44		9.10	3.99	0.00	0.000	0.000
8/31/2012	2.20	0.98	0.44		9.17	4.02	0.00	0.000	0.000
9/30/2012	2.17	0.97	0.45		9.23	4.05	0.00	0.000	0.000
10/31/2012	2.11	0.82	0.39		9.30	4.08	0.00	0.000	0.000
11/30/2012	2.12	0.98	0.46		9.36	4.11	0.00	0.000	0.000
12/31/2012	1.97	1.04	0.52		9.42	4.14	0.00	0.000	0.000
1/31/2013	1.82	1.07	0.59		9.48	4.17	0.00	0.000	0.000
2/28/2013	1.65	0.97	0.59		9.52	4.20	0.00	0.000	0.000
3/31/2013	1.88	1.03	0.55		9.58	4.23	0.00	0.000	0.000
4/30/2013	1.97	0.97	0.49		9.64	4.26	0.00	0.000	0.000

Date	Oil Rate (CD) m3/d	Water Rate (CD) m3/d	Water Oil Ratio m3/m3	Water Inj Rate (CD) m3/d	Cum Oil Prod Km3	Cum Water Prod Km3	Cum Water Inj Km3	VRR	Cum VRR
5/31/2013	1.82	0.96	0.53		9.70	4.29	0.00	0.000	0.000
6/30/2013	1.89	1.01	0.54		9.75	4.32	0.00	0.000	0.000
7/31/2013	1.99	1.21	0.61		9.82	4.36	0.00	0.000	0.000
8/31/2013	2.05	1.22	0.60		9.88	4.40	0.00	0.000	0.000
9/30/2013	1.97	1.11	0.56		9.94	4.43	0.00	0.000	0.000
10/31/2013	1.94	0.96	0.49		10.00	4.46	0.00	0.000	0.000
11/30/2013	1.99	0.95	0.48		10.06	4.49	0.00	0.000	0.000
12/31/2013	1.28	0.54	0.42		10.10	4.50	0.00	0.000	0.000
1/31/2014	1.07	0.49	0.46		10.13	4.52	0.00	0.000	0.000
2/28/2014	1.43	0.63	0.44		10.17	4.54	0.00	0.000	0.000
3/31/2014	1.78	0.85	0.48		10.23	4.56	0.00	0.000	0.000
4/30/2014	1.94	1.06	0.54		10.28	4.60	0.00	0.000	0.000
5/31/2014	1.82	0.90	0.49		10.34	4.62	0.00	0.000	0.000
6/30/2014	1.70	0.75	0.44		10.39	4.65	0.00	0.000	0.000
7/31/2014	1.70	0.80	0.47		10.44	4.67	0.00	0.000	0.000
8/31/2014	1.68	0.75	0.45		10.50	4.69	0.00	0.000	0.000
9/30/2014	1.60	0.77	0.48		10.54	4.72	0.00	0.000	0.000
10/31/2014	1.31	0.70	0.54		10.59	4.74	0.00	0.000	0.000
11/30/2014	1.59	1.11	0.70		10.63	4.77	0.00	0.000	0.000
12/31/2014	1.70	1.20	0.71		10.69	4.81	0.00	0.000	0.000
1/31/2015	1.23	0.69	0.56		10.72	4.83	0.00	0.000	0.000
2/28/2015	1.47	0.78	0.53		10.76	4.85	0.00	0.000	0.000
3/31/2015	1.65	0.97	0.59		10.82	4.88	0.00	0.000	0.000
4/30/2015	1.66	0.95	0.58		10.87	4.91	0.00	0.000	0.000
5/31/2015	1.64	0.95	0.58		10.92	4.94	0.00	0.000	0.000
6/30/2015	1.51	0.75	0.50		10.96	4.96	0.00	0.000	0.000
7/31/2015	1.35	0.85	0.63		11.00	4.99	0.00	0.000	0.000
8/31/2015	1.50	0.87	0.58		11.05	5.02	0.00	0.000	0.000
9/30/2015	1.85	4.72	2.56		11.11	5.16	0.00	0.000	0.000
10/31/2015	4.62	12.88	2.79		11.25	5.56	0.00	0.000	0.000
11/30/2015	6.49	11.28	1.74		11.44	5.90	0.00	0.000	0.000
12/31/2015	6.20	11.21	1.81		11.64	6.24	0.00	0.000	0.000
1/31/2016	4.95	9.46	1.91		11.79	6.54	0.00	0.000	0.000
2/29/2016	5.31	7.89	1.49		11.94	6.76	0.00	0.000	0.000
3/31/2016	5.03	7.88	1.56		12.10	7.01	0.00	0.000	0.000
4/30/2016	4.85	7.70	1.59		12.24	7.24	0.00	0.000	0.000
5/31/2016	3.06	4.00	1.31		12.34	7.36	0.00	0.000	0.000
6/30/2016	4.34	6.46	1.49		12.47	7.56	0.00	0.000	0.000
7/31/2016	3.96	4.91	1.24		12.59	7.71	0.00	0.000	0.000
8/31/2016	3.79	4.60	1.21		12.71	7.85	0.00	0.000	0.000
9/30/2016	3.98	4.29	1.08		12.83	7.98	0.00	0.000	0.000
10/31/2016	3.86	3.64	0.94		12.95	8.09	0.00	0.000	0.000
11/30/2016	4.19	3.57	0.85		13.07	8.20	0.00	0.000	0.000
12/31/2016	3.94	3.04	0.77		13.20	8.30	0.00	0.000	0.000
1/31/2017	3.28	2.51	0.76		13.30	8.37	0.00	0.000	0.000

Date	Oil Rate (CD) m3/d	Water Rate (CD) m3/d	Water Oil Ratio m3/m3	Water Inj Rate (CD) m3/d	Cum Oil Prod Km3	Cum Water Prod Km3	Cum Water Inj Km3	VRR	Cum VRR
2/28/2017	3.65	2.84	0.78		13.40	8.45	0.00	0.000	0.000
3/31/2017	3.89	2.95	0.76		13.52	8.54	0.00	0.000	0.000
4/30/2017	3.55	2.63	0.74		13.63	8.62	0.00	0.000	0.000
5/31/2017	3.33	2.47	0.74		13.73	8.70	0.00	0.000	0.000
6/30/2017	2.73	1.94	0.71		13.81	8.76	0.00	0.000	0.000
7/31/2017	4.53	3.30	0.73		13.95	8.86	0.00	0.000	0.000
8/31/2017	3.97	2.78	0.70		14.08	8.95	0.00	0.000	0.000
9/30/2017	3.23	2.43	0.75		14.17	9.02	0.00	0.000	0.000
10/31/2017	2.52	1.94	0.77		14.25	9.08	0.00	0.000	0.000
11/30/2017	3.80	2.92	0.77		14.36	9.17	0.00	0.000	0.000
12/31/2017	3.17	2.63	0.83		14.46	9.25	0.00	0.000	0.000